



# TOOLS THAT MEASURE UP!

## Electronic Calipers - Coolant Proof



**IP67**

- ▶ Resolution: 0.0005"/0.01mm
- ▶ Coolant proof, IP67 Ingress protection level
- ▶ Buttons: zero set/power on, inch/mm conversion
- ▶ Auto power off
- ▶ Battery CR2032, includes one spare battery
- ▶ DIN862, hardened stainless steel construction, with locking clamp and thumb wheel for outside, inside, depth and step measurements
- ▶ Supplied in fitted storage case

Range (Inch/mm)	Item #	Price
0-6/0-150	1118-150	<b>\$ 149.90</b>
0-8/0-200	1118-200	<b>219.90</b>
0-12/0-300	1118-300	<b>267.90</b>

## Electronic Calipers



**SPC**

- ▶ Resolution: 0.0005"/0.01mm
- ▶ Buttons: zero set, power on/off, inch/mm conversion
- ▶ Recessed zero button prevents it from being pressed by accident
- ▶ Battery SR44, includes one spare battery
- ▶ DIN862, hardened stainless steel construction, with locking clamp and thumb wheel, for outside, inside, depth and step measurements
- ▶ Data output via USB
- ▶ Supplied in fitted storage case

Range (Inch/mm)	Item #	Price
0-6/0-150	1112-150	<b>\$ 44.90</b>
0-8/0-200	1112-200	<b>65.30</b>
0-12/0-300	1112-300	<b>101.00</b>
<b>SPC Cable 7301-SPC1</b>		<b>\$ 175.50</b>

*SPC Software for PC included with cable*

## Fractional Reading Electronic Calipers - Coolant Proof



**IP54**  
**SPC**

- ▶ Resolution: 0.0005", 1/128" (fractional), 0.01mm
- ▶ Coolant proof, IP54 Ingress protection level
- ▶ Buttons: zero set, mm/inch/fraction conversion, ABS/INC, power on/off
- ▶ Auto power off
- ▶ Battery CR2032, includes one spare battery
- ▶ DIN862, hardened stainless steel construction, with locking clamp and thumb wheel, for outside, inside, depth and step measurements
- ▶ Data output via USB
- ▶ Supplied in fitted storage case

Range (Inch/mm)	Item #	Price
0-6/0-150	1102-150	<b>\$ 68.40</b>
0-8/0-200	1102-200	<b>93.90</b>
0-12/0-300	1102-300	<b>121.40</b>
<b>SPC Cable 7301-SPC4</b>		<b>\$ 95.70</b>

*SPC Software for PC included with cable*

## Electronic Calipers with Metal Case



- ▶ Resolution: 0.0005"/0.01mm
- ▶ Die cast zinc alloy casing
- ▶ Buttons: zero set, power on/off, inch/mm conversion
- ▶ Battery SR44, includes one spare battery
- ▶ DIN862, hardened stainless steel construction, with locking clamp and thumb wheel, for outside, inside, depth and step measurements
- ▶ Supplied in fitted storage case

Range (Inch/mm)	Item #	Price
0-6/0-150	1114-150	<b>\$ 64.30</b>
0-8/0-200	1114-200	<b>88.80</b>
0-12/0-300	1114-300	<b>126.50</b>

**DISTRIBUTED BY:**

## Electronic Calipers with Carbide Tipped Jaws



SPC

- ▶ Resolution: 0.0005"/0.01mm
- ▶ Wear resistant carbide tipped outside and inside jaws for inside and outside measurements
- ▶ Buttons: zero set, power on/off, inch/mm conversion
- ▶ Recessed zero button prevents it from being pressed by accident
- ▶ Battery SR44, includes one spare battery
- ▶ DIN862, hardened stainless steel construction
- ▶ Data output via USB
- ▶ Supplied in fitted storage case

Range (Inch/mm)	Item #	Price
0-6/0-150	1110-150	<b>\$ 158.10</b>
0-8/0-200	1110-200	<b>188.70</b>
0-12/0-300	1110-300	<b>260.10</b>
<b>SPC Cable</b>	<b>7301-SPC1</b>	<b>\$ 175.50</b>

*SPC Software for PC included with cable*

## Long Range Electronic Calipers (12 to 80 Inches)



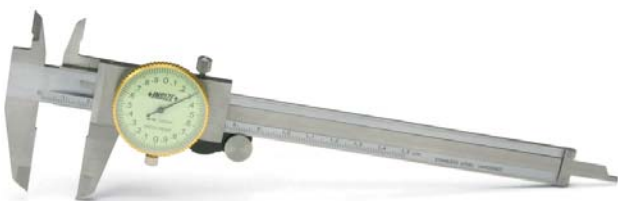
SPC

- ▶ Resolution: 0.0005"/0.01mm
- ▶ Round faces of lower jaws are ideal for accurate inside measurements
- ▶ Buttons: power on/off, inch/mm conversion, absolute and incremental measurements, data preset, set data
- ▶ Battery CR2032, includes one spare battery
- ▶ Data output via USB
- ▶ Hardened stainless steel construction, with locking screw and fine adjustment for outside and inside measurements
- ▶ Supplied in fitted storage case

Range (Inch/mm)	Lower Jaw Length (Inch/mm)	Internal Jaw Width (Inch/mm)	Item #	Price
0-12/0-300	2.95/75	0.500/12.7	1133-127	<b>\$ 268.90</b>
0-20/0-500	3.9/100	0.787/20	1136-501	<b>412.00</b>
0-24/0-600	3.9/100	0.500/12.7	1133-24	<b>509.40</b>
0-24/0-600	5.9/150	0.787/20	1136-602	<b>597.00</b>
0-40/0-1000	5.9/150	0.800/20.32	1133-40	<b>1,113.00</b>
0-40/0-1000	5.9/150	0.787/20	1136-1002	<b>1,113.10</b>
0-60/0-1500	5.9/150	0.787/20	1136-1502	<b>1,865.00</b>
0-80/0-2000	5.9/150	0.787/20	1136-2002	<b>2,744.20</b>
<b>SPC Cable</b>			<b>7301-SPC1</b>	<b>\$ 175.50</b>

*SPC Software for PC included with cable*

## Dial Calipers



- ▶ DIN862, hardened stainless steel construction, satin chrome clamp and thumb wheel
- ▶ Shock proof dial indicator, adjustable bezel with bezel locking clamp
- ▶ For outside, inside, depth and step measurements
- ▶ Supplied in fitted storage case

### INCH

Range (Inch)	Graduation (Inch)	Item #	Price
0-6	0.001	1311-6	<b>\$ 41.90</b>
0-8	0.001	1311-8	<b>56.10</b>
0-12	0.001	1311-12	<b>104.10</b>

### METRIC

Range (mm)	Graduation (mm)	Item #	Price
0-150	0.01	1311-150	<b>\$ 66.30</b>
0-200	0.01	1311-200	<b>89.80</b>
0-300	0.01	1311-300	<b>119.40</b>

## Long Range Dial Caliper



- ▶ Graduations: 0.001"
- ▶ Round faces of lower jaws are ideal for accurate inside measurements
- ▶ Upper graduations on beam scale is for direct reading of internal measurement
- ▶ Stainless steel construction
- ▶ Shock proof dial indicator, adjustable bezel with bezel locking clamp
- ▶ Supplied in fitted storage case

Range (Inch)	Jaw Length (Inch)	Internal Jaw Width (Inch)	Item #	Price
0-12	2.95	1/2	1385-12	<b>\$ 150.00</b>
0-18	3.54	1/2	1385-18	<b>292.50</b>
0-24	3.54	1/2	1385-24	<b>363.10</b>
0-40	5.91	1	1385-40	<i>PRICE UPON REQUEST</i>

## Vernier Calipers



- ▶ Thumb slide knob
- ▶ DIN862, monoblock, hardened stainless steel construction with satin chrome plated reading surface
- ▶ Supplied in fitted storage case

### INCH/METRIC

Range (Inch/mm)	Graduation (Inch/mm)	Item #	Price
0-6/0-150	0.001/0.05	1205-1502	<b>\$ 27.60</b>
0-8/0-200	0.001/0.05	1205-2002	<b>42.90</b>
0-12/0-300	0.001/0.05	1205-3002	<b>78.60</b>

### METRIC

Range (mm)	Graduation (mm)	Item #	Price
0-150	0.02	1205-1501	<b>\$ 26.60</b>
0-200	0.02	1205-2001	<b>41.90</b>
0-300	0.02	1205-3001	<b>78.60</b>

## Long Range Vernier Calipers



- ▶ Graduations: 0.001"/0.02mm
- ▶ Round faces of lower jaws are ideal for accurate inside measurements
- ▶ With locking screw and fine adjustment
- ▶ DIN862, monoblock, hardened stainless steel construction with satin chrome plated reading surface
- ▶ Supplied in fitted storage case

Range (Inch/mm)	Jaw Length (Inch/mm)	Internal Jaw Width (Inch/mm)	Item #	Price
0-12/0-300	3.5/90	0.787/20	1208-392	<b>\$ 157.00</b>
0-20/0-500	3.9/100	0.787/20	1208-512	<b>284.40</b>
0-24/0-600	3.9/100	0.787/20	1208-612	<b>313.50</b>
0-40/0-1000	5.9/150	0.787/20	1208-1022	<b>877.20</b>
0-60/0-1500	5.9/150	0.787/20	1208-1522	<b>1,407.60</b>
0-80/0-2000	5.9/150	0.787/20	1208-2022	<b>2,733.60</b>

## Vernier Calipers with Carbide Tipped Jaws - 0.001" Decimal Graduations



- ▶ Wear resistant carbide tipped outside and inside jaws for inside and outside measurements
- ▶ Graduations: 0.001"/0.02mm
- ▶ Thumb slide knob and locking screw
- ▶ DIN862, monoblock, hardened stainless steel construction with satin chrome plated reading surface
- ▶ Supplied in fitted storage case

Range (Inch/mm)	Graduation (Inch/mm)	Item #	Price
0-6/0-150	0.001/0.02	1238-1502	<b>\$ 115.30</b>
0-8/0-200	0.001/0.02	1238-2002	<b>146.90</b>
0-12/0-300	0.001/0.02	1238-3002	<b>219.30</b>

## Depth Base Attachment for Calipers

- ▶ Fits Insize calipers up to 8"/200mm
- ▶ Stainless steel
- ▶ Locking clamp



Base Length (Inch/mm)	Item #	Price
3/76	6140	<b>\$ 16.40</b>

## Electronic Depth Calipers



- ▶ Resolution: 0.0005"/0.01mm
- ▶ DIN862, hardened stainless steel construction
- ▶ Stainless steel, hardened beam and base
- ▶ Buttons: zero set, power on/off, inch/mm conversion
- ▶ Recessed zero button prevents it from being pressed by accident
- ▶ Battery SR44, includes one spare battery
- ▶ Data output via USB
- ▶ Supplied in fitted storage case

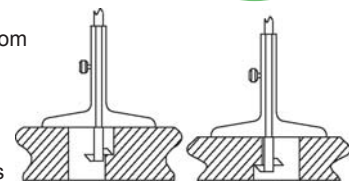
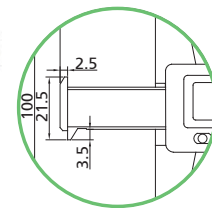
Range (Inch/mm)	Base Length (Inch/mm)	Item #	Price
0-6/0-150	4/100	1141-150	<b>\$ 67.40</b>
0-8/0-200	4/100	1141-200	<b>88.80</b>
0-12/0-300	6/150	1141-300	<b>189.80</b>
<b>SPC Cable</b>		<b>7301-SPC1</b>	<b>\$ 175.50</b>

SPC Software for PC included with cable

## Electronic Depth Calipers with Two Hooks



- ▶ Resolution: 0.0005"/0.01mm
- ▶ DIN862, hardened stainless steel construction
- ▶ Buttons: zero set, power on/off, inch/mm conversion
- ▶ Recessed zero button prevents it from being pressed by accident
- ▶ Battery SR44, includes one spare battery
- ▶ Data output via USB
- ▶ For step and groove measurements
- ▶ Supplied in fitted storage case



Range (Inch/mm)	Base Length (Inch/mm)	Item #	Price
0-6/0-150	4/100	1144-150	<b>\$ 85.70</b>
0-8/0-200	4/100	1144-200	<b>106.10</b>
0-12/0-300	6/150	1144-300	<b>212.20</b>
<b>SPC Cable</b>		<b>7301-SPC1</b>	<b>\$ 175.50</b>

SPC Software for PC included with cable

## Outside Micrometers



3203-25



3203-50

### INDIVIDUAL MICROMETERS

Range (Inch)	Inch Item #	Range (mm)	Metric Item #	Price
0-1	3203-1	0-25	3203-25	<b>\$ 27.60</b>
1-2	3203-2	25-50	3203-50	<b>30.60</b>
2-3	3203-3	50-75	3203-75	<b>34.20</b>
3-4	3203-4	75-100	3203-100	<b>38.80</b>
4-5	3203-5	100-125	3203-125	<b>48.00</b>
5-6	3203-6	125-150	3203-150	<b>54.10</b>
6-7	3203-7	150-175	3203-175	<b>61.20</b>
7-8	3203-8	175-200	3203-200	<b>69.40</b>
8-9	3203-9	200-225	3203-225	<b>73.50</b>
9-10	3203-10	225-250	3203-250	<b>80.60</b>
10-11	3203-11	250-275	3203-275	<b>89.80</b>
11-12	3203-12	275-300	3203-300	<b>96.40</b>

- ▶ Graduation: 0.0001"/0.01mm
- ▶ DIN863, painted frame, ratchet stop, spindle lock, carbide tips, adjusting wrench
- ▶ Micrometers over 1"/25mm are supplied with a setting standard
- ▶ Supplied in fitted storage case
- ▶ Sets include all features above *PLUS* applicable setting standards

### MICROMETER SETS

Range (Inch)	Inch Item #	Range (mm)	Metric Item #	Price
0-3 (3 pcs)	3203-33	0-75 (3 pcs)	3203-753	<b>\$ 84.90</b>
0-4 (4 pcs)	3203-44	0-100 (4 pcs)	3203-1004	<b>118.80</b>
0-6 (6 pcs)	3203-66	0-150 (6 pcs)	3203-1506	<b>209.10</b>
6-12 (6 pcs)	3203-126	150-300 (6 pcs)	3203-3006	<b>402.90</b>
0-12 (12 pcs)	3203-1212	0-300 (12 pcs)	3203-3012	<b>596.70</b>

## Electronic Outside Micrometers

- ▶ Resolution: 0.00005"/0.001mm
- ▶ Buttons: power on/off, inch/mm conversion, absolute and incremental measurement, data set
- ▶ Auto power off
- ▶ SR44 battery, includes one spare battery
- ▶ DIN863, painted and insulated frame, ratchet friction thimble, spindle lock, with battery cover wrench, carbide tips
- ▶ Spherical anvil included allows tube thickness measurements
- ▶ Micrometers over 0-1"/0-25mm are supplied with a setting standard
- ▶ Supplied in fitted storage case

Spherical Anvil included



Range (Inch/mm)	Item #	Price
0-1/0-25	3109-25E	\$ 81.60
1-2/25-50	3109-50E	96.70
2-3/50-75	3109-75E	115.80
3-4/75-100	3109-100E	127.80
4-5/100-125	3109-125E	160.60
5-6/125-150	3109-150E	179.80

## Electronic Outside Micrometers - Coolant Proof

- ▶ Resolution: 0.00005"/0.001mm
- ▶ Coolant proof, IP65 Ingress protection level
- ▶ Thimble graduation: 0.0001"
- ▶ Buttons: power on/off, inch/mm conversion, absolute and incremental measurement, data set
- ▶ Data output via RS232 (RS232 cable included, SPC connection cable optional)
- ▶ Auto power off
- ▶ SR44 battery, includes one spare battery
- ▶ DIN863, painted and insulated frame, ratchet stop, spindle lock, with battery cover wrench, carbide tips
- ▶ Spherical anvil included allows tube thickness measurements
- ▶ Micrometers over 0-1"/0-25mm are supplied with a setting standard
- ▶ Supplied in fitted storage case

Spherical Anvil included



Range (Inch/mm)	Item #	Price
0-1/0-25	3101-25E	\$ 200.50
1-2/25-50	3101-50E	216.10
2-3/50-75	3101-75E	231.90
<b>SPC Cable</b>	<b>7310-SPC2</b>	<b>\$ 70.50</b>

SPC Software for PC included with cable

## Blade Micrometers

- ▶ Graduation: 0.0001"
- ▶ Non-rotating spindle
- ▶ Ratchet stop
- ▶ Zero adjusting wrench
- ▶ Blade tips on anvil and spindle allow measurements of groove diameters of shafts and keyways
- ▶ Blade tip: 0.030" thick by 0.240" wide by 0.250" long
- ▶ Micrometers over 0-1" are supplied with a setting standard
- ▶ Supplied in fitted storage case



Range (Inch)	Item #	Price
0-1	3232-1	\$ 144.90
1-2	3232-2	157.10
2-3	3232-3	168.30
3-4	3232-4	185.70
4-5	3232-5	203.00
5-6	3232-6	220.40
6-7	3232-7	237.70

## Uni-Micrometers

- ▶ Graduation: 0.0001"
- ▶ For measuring tube thickness, shoulder edge distance, rivet head height, etc.
- ▶ With flat anvil and rod anvil
- ▶ Ratchet friction thimble, carbide spindle tip and zero adjusting wrench
- ▶ Supplied with a setting standard
- ▶ Supplied in fitted storage case



Range (Inch)	Item #	Price
0-1	3262-1	\$ 136.20
1-2	3262-2	158.60

## Screw Thread Micrometers

- ▶ Graduation: 0.001"
- ▶ Measures pitch diameter of screw threads
- ▶ Non-rotating spindle, ratchet stop
- ▶ Zero adjusting wrench
- ▶ Supplied with 60 degree setting standards.  
55 degree setting standards are sold separately (NOTE: 0-1" does not require a setting standard)
- ▶ Measuring tips are sold separately
- ▶ Supplied in fitted storage case



Range (Inch)	Item #	Price
0-1	3281-1	\$ 89.20
1-2	3281-2	98.50
2-3	3281-3	114.40
3-4	3281-4	124.40
4-5	3281-5	143.40
5-6	3281-6	161.30

## Measuring Tips for Screw Thread Micrometers

- ▶ Made of bearing steel



### 6-Piece Set

UNIFIED SCREW AND METRIC (for 60 degree threads)

Pitch (Threads per Inch/mm)	Item #	Price
64-48TPI/0.4-0.5mm	7381-T1S	\$ 98.00
44-28TPI/0.6-0.9mm		
24-14TPI/1-1.75mm		
13-9TPI/2-3mm		
8-5TPI/3.5-5mm		
4.5-3.5TPI/5.5-7mm		

### 10-Piece Set

WHITWORTH SCREW (for 55 degree threads)

Pitch (Threads per Inch)	Item #	Price
60-48TPI	7381-T2S	\$ 160.20
48-40TPI		
40-32TPI		
32-24TPI		
24-18TPI		
18-14TPI		
14-10TPI		
10-7TPI		
7-4.5TPI		
4.5-3.5TPI		

## 55° Whitworth Thread Micrometer Setting Standards



Description	Item #	Price
1" standard for 0-1" micrometers	3281-SPE1	\$ 78.60
2" standard for 1-2" micrometers	3281-SPE2	90.00
3" standard for 2-3" micrometers	3281-SPE3	102.60
4" standard for 3-4" micrometers	3281-SPE4	117.80
5" standard for 4-5" micrometers	3281-SPE5	135.30
6" standard for 5-6" micrometers	3281-SPE6	154.10

## Micrometer Stands



Description	Item #	Price
Compact stand with 1 locking handle	6300	\$ 29.60
Cast stand with 2 separate locking handles	6301	26.60

## Dial Indicators

- ▶ Meets DIN878 or ANSI B89.1.10 standard
- ▶ Metric Indicator: Stem diameter 8mm, Bezel diameter 60mm
- ▶ Inch Indicator: Stem diameter 3/8", Bezel diameter 2.36"
- ▶ Lug back
- ▶ Bezel locking clamp and tolerance index
- ▶ Aluminum body
- ▶ Continuous reading dial 0-100
- ▶ Contact point thread for inch indicator: #4-48UNF
- ▶ Contact point thread for metric indicator: M2.5 x 0.45
- ▶ Supplied in fitted storage case



## Precision Dial Indicator - Inch

- ▶ Meets ANSI B89.1.10 standard
- ▶ Bezel diameter: 2.36"
- ▶ Stem diameter: 3/8"
- ▶ Shock proof, jeweled
- ▶ Lug back
- ▶ Bezel locking clamp and tolerance index
- ▶ Aluminum body
- ▶ Contact point thread #4-48UNF
- ▶ Supplied in fitted storage case



Range (Inch)	Graduation (Inch)	Item #	Price
0-0.05	0.0001	2315-05	<b>\$ 94.90</b>

## Electronic Indicators

- ▶ Rotating display head
- ▶ Stem diameter: 3/8"
- ▶ Buttons: inch/mm, zero set, power on/off, mode – to find the difference between min. and max. readings, "+/-" – for measuring direction change from zero set
- ▶ Data output via USB
- ▶ Auto power off
- ▶ CR2032 battery, includes spare battery
- ▶ Lug back
- ▶ Contact point thread #4-48UNF
- ▶ Supplied in fitted storage case



### INCH

Range (Inch)	Graduation (Inch)	Item #	Price
0-0.5	0.001	2307-05	<b>\$ 27.60</b>
0-1	0.001	2307-1	<b>25.50</b>
0-2	0.001	2307-2	<b>56.10</b>

### METRIC

Range (mm)	Graduation (mm)	Item #	Price
0-15	0.1	2318-15	<b>\$ 60.20</b>
0-25	0.1	2318-25	<b>66.30</b>

## Electronic Indicator for Bore Gages

- ▶ Specifically designed for bore gages but can be used in other applications
- ▶ Rotating dial face, digital/analog display
- ▶ Stem diameter: 3/8"
- ▶ Absolute/relative measurement
- ▶ Data output via USB
- ▶ Auto power off
- ▶ CR2032 battery, includes spare battery
- ▶ Lug back
- ▶ Contact point thread #4-48UNF
- ▶ Supplied in fitted storage case



Range (Inch/mm)	Resolution (Inch/mm)	Item #	Price
0-0.5/0-10	0.00005/0.002	2106-102E	<b>\$ 166.90</b>
<b>SPC Cable</b>		7303-SPC2	<b>\$ 108.00</b>

*SPC Software for PC included with cable*

## Long Range Electronic Indicators

- ▶ Buttons: inch/mm, ABS, zero set
- ▶ Auto power off
- ▶ Lug back and flat back supplied
- ▶ CR2032 battery
- ▶ Stem diameter: 3/8"
- ▶ Data output via USB
- ▶ Contact point thread #4-48UNF
- ▶ Supplied in fitted storage case



Range (Inch/mm)	Resolution (Inch/mm)	Item #	Price
0-0.5/0-10	0.0005/0.005	2102-10E	<b>\$ 101.00</b>
0-1/0-25	0.0005/0.005	2102-25E	<b>117.30</b>
<b>SPC Cable</b>		7303-SPC3	<b>\$ 108.00</b>

*SPC Software for PC included with cable*

Range (Inch/mm)	Resolution (Inch/mm)	Item #	Price
0-2/0-50	0.0002/0.005	2107-50E	<b>\$ 326.60</b>
<b>SPC Cable</b>		7303-SPC2	<b>\$ 134.60</b>

*SPC Software for PC included with cable*

## Dial Test Indicators



- ▶ Meets DIN2270 or BS2795 standard
- ▶ Satin chrome finish, brass body, anti-magnetic
- ▶ Jeweled bearing, shock-proof
- ▶ Interchangeable carbide contact point, 0.0787"/2mm diameter ball, supplied with wrench
- ▶ Probe length: 0.530"/13.5mm
- ▶ Two holding stems: 5/32"/4mm and 3/8"/8mm
- ▶ Supplied in fitted storage case

### INCH

Range (Inch)	Graduation (Inch)	Bezel Diameter (Inch)	Item #	Price
0-0.03	0.0005	1.18	2380-35	<b>\$ 68.40</b>
0-0.008	0.0001	1.18	2380-301	<b>85.70</b>

### METRIC

Range (mm)	Graduation (mm)	Bezel Diameter (mm)	Item #	Price
0-0.8	0.01	30	2380-08	<b>\$ 60.20</b>

## Long Range Dial Test Indicators



- ▶ Steel contact point, 0.0787"/2mm diameter ball
- ▶ Probe length: 5/8"/16mm
- ▶ Holding stem: 5/32"/4mm
- ▶ Supplied in fitted storage case

### INCH

Range (Inch)	Graduation (Inch)	Bezel Diameter (Inch)	Item #	Price
±0.06	0.0005	1.51	2386-006	<b>\$ 129.60</b>

### METRIC

Range (mm)	Graduation (mm)	Bezel Diameter (mm)	Item #	Price
±1.6	0.01	38.4	2386-16	<b>\$ 129.60</b>

## SPC Data Connection Cables with Software

- ▶ Set includes cable and SPC software for PC



Description	Item #	Price
For use with Electronic Calipers and Electronic Depth Calipers in Insize series: 1106, 1110, 1112, 1117, 1120, 1121, 1122, 1123, 1131, 1132, 1133, 1136, 1141, 1142, 1144, 1145, 1161, 1162, 1163, 1182, 1183, 1184, 1185, 1186, 1187, 1189	7301-SPC1	<b>\$ 175.50</b>
For use with Electronic Calipers and Electronic Height Gages in Insize series: 1111, 1116, 1133, 1151, 1181	7301-SPC2	<b>134.60</b>
For use with Electronic Calipers in Insize series: 1101, 1102	7301-SPC4	<b>95.70</b>
For use with Electronic Indicators in Insize series: 2105, 2106, 2107	7303-SPC2	<b>134.60</b>
For use with Electronic Indicators in Insize series: 2102	7303-SPC3	<b>108.00</b>
For use with Electronic Micrometers and Electronic Micrometer Heads in Insize series: 3101, 6351	7310-SPC2	<b>70.50</b>

## Magnetic Stands

### Dual Stem Magnetic Stand

- ▶ Main stem: Ø0.470" x 6.930"
- ▶ Assistant stem: Ø3.940" x 6.300"
- ▶ Clamp hole: 3/8" diameter plus 8mm sleeve
- ▶ For dial indicators with lug back or flat back
- ▶ Base: 2.4" x 2" x 2.2" with on/off switch



Magnetic Force (lbf)	Item #	Price
132	6200-60	\$ 23.50

### Universal Magnetic Stand

- ▶ With fine adjustment
- ▶ Overall stem length: 13.4"
- ▶ Dovetail groove for test indicator
- ▶ Clamp hole: 3/8" diameter plus 8mm sleeve
- ▶ For dial indicators with lug back or flat back
- ▶ Base: 2.4" x 2" x 2.2" with on/off switch



Magnetic Force (lbf)	Item #	Price
176	6208-80	\$ 53.50

### Dual Stem Magnetic Stand

- ▶ With fine adjustment
- ▶ Main stem: Ø0.470" x 6.930"
- ▶ Assistant stem: Ø3.940" x 6.300"
- ▶ Clamp hole: 3/8" diameter plus 8mm sleeve
- ▶ For dial indicators with lug back or flat back
- ▶ Base: 2.4" x 2" x 2.2" with on/off switch



Magnetic Force (lbf)	Item #	Price
132	6201-60	\$ 21.50

### Universal Magnetic Stand with Heavy Duty Stem Assembly

- ▶ Heavy duty universal with fine adjustment
- ▶ Overall stem length: 13.4"
- ▶ Dovetail groove for dial test indicators
- ▶ Clamp hole: 3/8" diameter plus 8mm sleeve
- ▶ For dial indicators with lug back or flat back
- ▶ Base: 2.4" x 2" x 2.2" with on/off switch



Magnetic Force (lbf)	Item #	Price
176	6205-80	\$ 107.50

### Heavy Duty High Force Magnetic Stand

- ▶ Heavy duty with fine adjustment
- ▶ Main stem: Ø0.787" x 14.175"
- ▶ Assistant stem: Ø0.470" x 14.175"
- ▶ Clamp hole: 3/8" diameter plus 8mm sleeve
- ▶ For dial indicators with lug back or flat back
- ▶ Base: 2.9" x 2" x 2.2" with on/off switch



Magnetic Force (lbf)	Item #	Price
220.5	6202-100	\$ 56.10

### Flex Arm Magnetic Stand

- ▶ Flexible arm
- ▶ Overall arm length: 13"
- ▶ Single lever operation to lock arm in place
- ▶ For dial indicators with stem diameter 3/8" and 8mm
- ▶ Base: 2.4" x 2" x 2.2" with on/off switch



Magnetic Force (lbf)	Item #	Price
176	6207-80	\$ 44.90

## Depth Micrometers

- ▶ Graduation: 0.001"
- ▶ Flat measuring end on depth rod
- ▶ Ratchet stop
- ▶ Supplied with adjusting wrench
- ▶ Includes measuring rods
- ▶ Supplied with ratchet stop to secure measuring rods
- ▶ Supplied in fitted storage case



Range (Inch)	2.5 Inch Base		4 Inch Base	
	Item #	Price	Item #	Price
0-1	3241-B1	<b>\$ 66.90</b>	3241-1	<b>\$ 66.80</b>
0-4	3241-B4	<b>116.70</b>	3241-4	<b>109.40</b>
0-6	–	–	3241-6	<b>130.90</b>
0-8	–	–	3241-8	<b>162.00</b>
0-12	–	–	3241-12	<b>211.60</b>

## Dial Indicator Depth Gages

- ▶ Hardened stainless steel base
- ▶ Three rod lengths with spherical ends to allow measurements from: 0-0.4", 0.4-0.8", 0.8-1.2" or 0-10mm, 10-20mm, 20-30mm
- ▶ Supplied in fitted storage case



### INCH

Range (Inch)	Indicator Range (Inch)	Indicator Graduation (Inch)	Base (Inch)	Item #	Price
0-1.2	0-0.5	0.001	4 x 0.67	2341-E2	<b>\$ 62.60</b>

### METRIC

Range (mm)	Indicator Range (mm)	Indicator Graduation (mm)	Base (mm)	Item #	Price
0-30	0-10	0.01	101.5 x 17	2341-102	<b>\$ 72.60</b>

## Electronic Indicator Depth Gage

- ▶ Hardened stainless steel base
- ▶ Buttons: inch/mm conversion, power on/off, zero set
- ▶ Three rod lengths with spherical ends to allow measurements from: 0-0.4"/0-10mm, 0.4-0.8"/10-20mm, 0.8-1.2"/20-30mm
- ▶ Supplied in fitted storage case



Range (Inch/mm)	Indicator Range (Inch/mm)	Indicator Graduation (Inch/mm)	Base (Inch/mm)	Item #	Price
0-1.2/0-30	0-0.5/0-12.7	0.0005/0.005	4 x 0.67/101.5 x 17	2141-102	<b>\$ 100.00</b>

## Measuring Tool Sets

### 2-Piece Set

► **Set Includes:**

- 1) Electronic digital caliper (1112-150), range 0-6"/0-150mm, resolution 0.0005"/0.01mm, meets DIN862, made of hardened stainless steel, with SR44 battery, spare battery and data output via USB
  - 2) Electronic outside micrometer (without SPC), range 0-1"/0-25mm, resolution 0.00005"/0.001mm, SR44 battery, spare battery auto power off, meets DIN863, ratchet stop, anvil lock, carbide tips, with spare spherical anvil and spare battery
- Supplied in fitted storage case

Item #	Price
5002-2	\$ 121.40



### 3-Piece Set

► **Set Includes:**

- 1) Dial caliper (1311-6), range 0-6", graduation 0.001", meets DIN862, made of hardened stainless steel
  - 2) Outside micrometer (3202-1), range 0-1", graduation 0.0001", meets DIN 863, with ratchet stop, carbide tips and zero adjusting wrench
  - 3) Rule (7110-150), 0-6", graduations 1/32", 1/64", 1/16", made of flexible stainless steel
- Supplied in fitted storage case

Item #	Price
5003-1	\$ 80.80



### 7-Piece Set

► **Set Includes:**

- 1) Electronic digital caliper (1112-150), range 0-6"/0-150mm, resolution 0.0005"/0.01mm, meets DIN862, made of hardened stainless steel, with SR44 battery, spare battery and data output via USB
  - 2) Electronic outside micrometer (without SPC), range 0-1"/0-25mm, resolution 0.00005"/0.001mm, SR44 battery, spare battery, auto power off, meets DIN863, carbide tips, with spare spherical anvil and spare battery
  - 3) Electronic digital indicator, range 0-0.5"/0-10mm, resolution 0.0005"/0.01mm, auto power off, lug back, with SR44 battery, spare battery and data output via USB
  - 4) Magnetic stand, magnetic force 132 lbf, base 2.4" x 2" x 2.2" with on/off switch, with fine adjustment, main stem Ø0.470" x 6.930", assistant stem Ø3.940" x 6.3"
  - 5) Micrometer stand (6300)
  - 6) Caliper depth base attachment, length 3", provides a wide base for depth measurement with electronic digital caliper, made of stainless steel
  - 7) Zero setting bar, used as calibration tool for electronic digital caliper and depth base attachment, made of stainless steel
- Supplied in fitted storage case

Item #	Price
5007-2	\$ 282.60

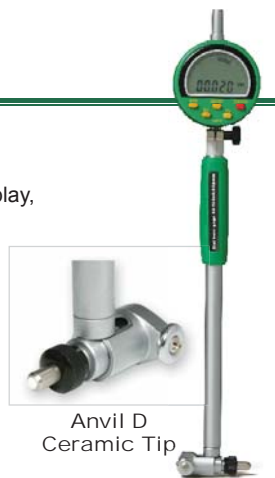


### Optional Data Connection Cables for Sets

Description	Item #	Price
For Electronic Caliper:	7301-SPC1	\$ 175.50
For Electronic Indicator:	7301-SPC4	95.70
<i>SPC Software for PC included with cable</i>		

## Electronic Bore Gage

- ▶ Indicator resolution: 0.0005" / 0.002mm
- ▶ Indicator range: 0-0.5"/0-10mm
- ▶ Indicator has rotary face, digital/analog display, auto power off
- ▶ Ceramic contact moving tip and anvils
- ▶ CR2032 battery, includes spare battery
- ▶ Supplied in fitted storage case



Anvil D  
Ceramic Tip

Range (Inch/mm)	Depth (Inch/mm)	Anvil Type	Item #	Price
2-6/50-100	6/150	D	2123-6	<b>\$ 278.60</b>

## Multi-Beam Electronic Height Gages



- ▶ Resolution: 0.001"/0.01mm
- ▶ Carbide-tipped scribe, stainless steel beam and base, with driving wheel for vertical movement
- ▶ Buttons: zero set, power on/off, inch/mm conversion, absolute and relative measurement, data preset, set data
- ▶ Data output via RS232 (RS232 cable included, SPC connection cable optional)
- ▶ Battery SR44, includes one spare battery
- ▶ Indicator holder is optional
- ▶ Supplied in fitted storage case



Range (Inch/mm)	Number of Beams	Item #	Price
0-12/0-300	2	1151-300	<b>\$ 530.40</b>
0-18/0-450	2	1151-450	<b>724.20</b>
0-24/0-600	2	1151-600	<b>942.50</b>
0-40/0-1000	3	1151-1000	<b>4,488.00</b>
<b>SPC Cable</b>		7301-SPC2	<b>\$ 175.50</b>

SPC Software for PC included with cable

## Block Levels

- ▶ Accuracy: 0.0002"/10"
- ▶ For checking horizontal surfaces and shafts
- ▶ Heat insulated grip
- ▶ Prism bottom
- ▶ Fine ground measuring surface
- ▶ Cross vial
- ▶ Supplied in fitted storage case



Size (Inch)	Item #	Price
6	4901-6	<b>\$ 131.10</b>
8	4901-8	<b>146.00</b>
12	4901-12	<b>196.00</b>

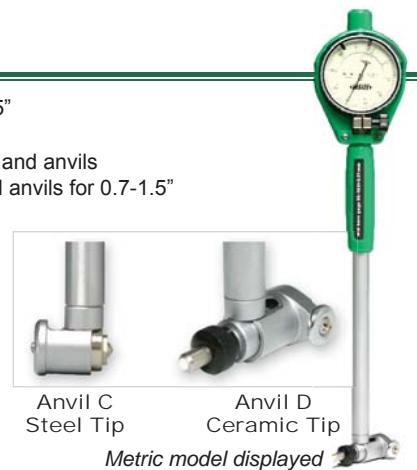
## Dial Bore Gages

- ▶ Indicator graduation: 0.0005"
- ▶ Indicator range: 0-0.25"
- ▶ Ceramic contact moving tip and anvils
- NOTE: Steel moving tip and anvils for 0.7-1.5"

- ▶ Supplied in fitted storage case

### OPTIONS:

- ▶ Measuring depths available up to 78.7"
- ▶ Dial resolution of 0.0001" and metric dials available



Anvil C  
Steel Tip

Anvil D  
Ceramic Tip

Metric model displayed

Range (Inch)	Depth (Inch)	Bezel Diameter (Inch)	Anvil Type	Item #	Price
0.7-1.5	6	2.28	C	2323-15	<b>\$ 145.50</b>
1.4-2.4	6	2.28	D	2323-24	<b>128.40</b>
2-4	6	2.28	D	2323-4	<b>132.50</b>
2-6	6	2.28	D	2323-6	<b>135.80</b>
6-10	16	2.28	D	2323-10	<b>157.60</b>
10-16	16	2.28	D	2323-16	<b>180.70</b>

## Indicator Holder

- ▶ Includes dovetail holder
- ▶ Supplied in storage pouch



Stem Section	Stem Length	Clamp Holes	Code	Price
0.25x0.5"	4"	5/32 and 3/8" diameter	6293-3	<b>\$ 16.60</b>
9x9mm	100mm	4 and 8mm diameter	6293-1	<b>16.60</b>

## Square Frame Levels

- ▶ Accuracy: 0.0002"/10"
- ▶ For checking horizontal and vertical surfaces and shafts
- ▶ Heat insulated handle
- ▶ Two prisms and two flat surfaces
- ▶ Fine ground measuring surfaces
- ▶ Cross vial
- ▶ Supplied in fitted storage case



Dimensions (Inch)	Item #	Price
4 x 4	4902-4	<b>\$ 137.70</b>
6 x 6	4902-6	<b>147.80</b>
8 x 8	4902-8	<b>161.30</b>
12 x 12	4902-12	<b>230.90</b>

## Electronic Protractor and Level

- ▶ 6" overall length
- ▶ Used as level and/or protractor
- ▶ Buttons: data hold, zero set, power on/off, absolute and relative measurement
- ▶ Four work surfaces
- ▶ Display rotates when level is upside down
- ▶ CR2032 battery
- ▶ Stainless steel frame
- ▶ Supplied in leather pouch



Range	Resolution	Item #	Price
0-360°	0.1°	2173-360	\$ 126.50

## Electronic Protractor



- ▶ Display in degrees and degrees/minutes/seconds
- ▶ Buttons: preset (preset any angle), mode (choose 0-90°, 0-180° or 0-360°), zero/on (zero set and power on), "+/-" – for measuring direction change from zero set
- ▶ Stainless steel with satin chrome plated scale
- ▶ With fine adjustment and small angle attachment
- ▶ Two blades: 6"/150mm and 12"/300mm
- ▶ Supplied with standard square for 90° set
- ▶ Supplied in fitted storage case

Range	Resolution	Item #	Price
0-360°	30"/0.005°	2172-360	\$ 465.20

## Protractor



- ▶ Graduations: 5'
- ▶ Parallax-free reading
- ▶ Stainless steel with satin chrome plated scale
- ▶ With fine adjustment and locking clamp
- ▶ Two blades: 6"/150mm and 12"/300mm
- ▶ With magnifier lens and small angle attachment
- ▶ Supplied in fitted storage case



Clamp for height gage  
sold separately

Range	Item #	Price
0-360°	2372-360	\$ 88.80

Item #	Price
2372-CLAMP	\$ 17.70

## Dial Protractor



- ▶ Dial graduation: 5'
- ▶ Stainless steel
- ▶ With locking clamp
- ▶ Two blades: 6"/150mm and 12"/300mm
- ▶ With small angle attachment
- ▶ Supplied in fitted storage case



Clamp for height gage  
sold separately

Range	Item #	Price
0-360°	2373-360	\$ 106.10

Item #	Price
2372-CLAMP	\$ 17.70

## Combination Square



- ▶ Blade graduation: 2278-180 1/32" and 0.5mm on one side, 1/64" and 1mm on reverse side  
2278-180E 1/8" and 1/16" on one side, 1/32" and 1/64" on reverse side
- ▶ Used as square, level, marking gage, scribe, center gage, protractor and 12" steel rule
- ▶ Square 90° and 45°, with level and scribe
- ▶ Protractor graduated 180° in both directions, with level
- ▶ Supplied in fitted storage case

Item #	Price
2278-180	\$ 112.70
2278-180E	112.70

## 90° Flat Edge Squares



- ▶ Meets DIN875 standard, grade 0
- ▶ Flat edge
- ▶ Hardened stainless steel
- ▶ Lapped measuring faces
- ▶ Supplied in fitted storage case

Dimensions (Inch/mm)	Item #	Price
2 x 1.5/50 x 40	4791-50	<b>\$ 29.80</b>
3 x 2/75 x 50	4791-75	<b>33.70</b>
4 x 2.75/100 x 70	4791-100	<b>39.30</b>
6 x 4/150 x 100	4791-150	<b>58.90</b>
8 x 5/200 x 130	4791-200	<b>76.20</b>
12 x 8/300 x 200	4791-300	<b>107.80</b>

## 90° Knife Edge Squares



- ▶ Meets DIN875 standard, grade 00
- ▶ Two knife edges on upright blade
- ▶ Hardened stainless steel
- ▶ Lapped measuring faces
- ▶ Supplied in fitted storage case

Dimensions (Inch/mm)	Item #	Price
2 x 1.5/50 x 40	4790-050	<b>\$ 35.10</b>
3 x 2/75 x 50	4790-075	<b>38.80</b>
4 x 2.75/100 x 70	4790-0100	<b>44.50</b>
6 x 4/150 x 100	4790-0150	<b>73.60</b>
8 x 5/200 x 130	4790-0200	<b>90.90</b>
12 x 8/300 x 200	4790-0300	<b>167.40</b>

## Radius Gage Sets



- ▶ Precision ground alloy steel
- ▶ Each piece has five concave or convex gaging surfaces
- ▶ Supplied in storage pouch

### INCH

Range (Inch)	Blade Size (Inch)	Blade Quantity	Handle	Item #	Price
1/64-1/2	1/64, 1/32, 3/64, 1/16, 5/64, 3/32, 7/64, 1/8, 9/64, 5/32, 11/64, 3/16, 7/32, 15/64, 1/4, 17/64, 9/32, 5/16, 11/32, 3/8, 13/32, 7/16, 15/32, 1/2	25	Included	4804-25E	<b>\$ 37.00</b>
9/16-1	9/16, 5/8, 11/16, 3/4, 13/16, 7/8, 15/16, 1	8	N/A	4804-8E	<b>55.30</b>

### METRIC

Range (mm)	Blade Size (mm)	Blade Quantity	Handle	Item #	Price
0.5-13	0.5, 1, 1.5, 2, 2.5, 3, 3.5, 4, 4.5, 5, 5.5, 6, 6.5, 7, 7.5, 8, 8.5, 9, 9.5, 10, 10.5, 11, 11.5, 12, 12.5, 13	26	Included	4804-26	<b>\$ 38.50</b>

## Acme Screw Pitch Gages



- ▶ Alloy steel
- ▶ Blades individually marked with pitch
- ▶ Supplied in storage pouch

Range (TPI)	Thread Type	Blade Pitch (TPI)	No. of Blades	Item #	Price
1-12	29°	1, 1-1/3, 1-1/2, 1-3/4, 2, 2-1/2, 3, 3-1/2, 4, 5, 6, 7, 8, 9, 10, 12	16	4824-16	<b>\$ 44.80</b>
Range (mm)	Thread Type	Blade Pitch (mm)	No. of Blades	Item #	Price
2-20	30°	2, 3, 4, 5, 6, 7, 8, 9, 10, 12, 16, 20	12	4824-12	<b>\$ 39.90</b>

## Inch Rectangular Gage Block Sets

- ▶ Alloy Steel
- ▶ Blocks individually serialized
- ▶ Manufacturing compliance certificate with deviation readings
- ▶ Meets ASME B89.1.9-2002 standard grade 0
- ▶ Supplied in fitted storage case



*Other inch and metric sets are available upon request*

### 36-Piece Set

Size (Inch)	Step (Inch)	Item #	Price
0.05		4102-36	<b>\$ 392.60</b>
0.1001-0.1009	0.0001		
0.101-0.109	0.001		
0.11-0.19	0.01		
0.1-0.5	0.1		
1			
2			
4			

### 81-Piece Set

Size (Inch)	Step (Inch)	Item #	Price
0.1001-0.1009	0.0001	4102-81	<b>\$ 647.70</b>
0.101-0.149	0.001		
0.05-0.95	0.05		
1-4	1		

## Unified 60° Screw Pitch Gages

- ▶ Alloy steel
- ▶ Blades individually marked with pitch



Range (TPI)	Blade Pitch (TPI)	No. of Blades	Item #	Price
4-42	4, 4-1/2, 5, 5-1/2, 6, 7, 8, 9, 10, 11, 11-1/2, 12, 13, 14, 15, 16, 18, 20, 22, 24, 26, 27, 28, 30, 32, 34, 36, 38, 40, 42	30	4820-230	<b>\$ 9.30</b>
4-62	4, 4-1/2, 5, 6, 7, 8, 9, 10, 11, 12, 13, 14, 15, 16, 18, 20, 22, 24, 32, 40, 48, 56, 62	23	4820-223	<b>7.60</b>

## Small Hole Gage Set

- ▶ For small holes, slots, grooves, etc.
- ▶ Satin chrome finish
- ▶ Supplied in storage pouch



4 Piece Set Includes:

- A: 0.125" to 0.200" (3mm to 5mm)
- B: 0.200" to 0.300" (5mm to 7.5mm)
- C: 0.300" to 0.400" (7.5mm to 10mm)
- D: 0.400" to 0.500" (10mm to 13mm)

Range (Inch/mm)	Item #	Price
0.125-0.500/3-13	4208-1	<b>\$ 21.50</b>

## Telescoping Gage Set

- ▶ Self centering feature for quick measurement of inside diameters of hole and widths of slots
- ▶ Both gaging ends are heat treated stainless steel and ground to a sphere
- ▶ Satin chrome finish
- ▶ Supplied in storage pouch



6 Piece Set Includes:

- A: 5/16" to 1/2" (8mm to 12.7mm)
- B: 1/2" to 3/4" (12.7mm to 19mm)
- C: 3/4" to 1-1/4" (19mm to 32mm)
- D: 1-1/4" to 2-1/8" (32mm to 54mm)
- E: 2-1/8" to 3-1/2" (54mm to 90mm)
- F: 3-1/2" to 6" (90mm to 150mm)

Range Inch (mm)	Item #	Price
5/16-6 (8-150)	4206-1	<b>\$ 30.30</b>

## Long Handle Telescoping Gages



- ▶ Self centering feature for quick measurement of inside diameters of holes and widths of slots
- ▶ Both gaging ends are heat treated stainless steel and ground to a sphere
- ▶ Satin chrome finish
- ▶ Supplied in storage pouch

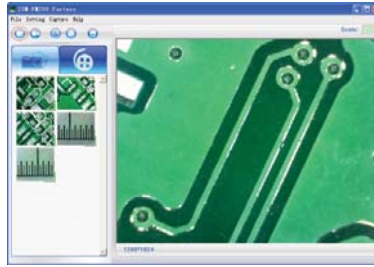
Handle Length (Inch/mm)	Range (Inch/mm)	Item #	Price
10/250	5/16 to 1/2 / 8 to 12.7	4209-1	<b>\$ 8.60</b>
10/250	1/2 to 3/4 / 12.7 to 19	4209-2	<b>8.60</b>
10/250	3/4 to 1-1/4 / 19 to 32	4209-3	<b>8.60</b>
12/300	1-1/4 to 2-1/8 / 32 to 54	4209-4	<b>10.00</b>
12/300	2-1/8 to 3-1/2 / 54 to 90	4209-5	<b>10.00</b>
12/300	3-1/2 to 6 / 90 to 150	4209-6	<b>10.00</b>
12/300	4-3/4 to 8 / 120 to 200	4209-7	<b>15.30</b>

# INSIZE TOOLS THAT MEASURE UP!

## Digital Microscope with Stand



- ▶ Records photos and video
- ▶ Supplied with geometric software for measurement
- ▶ Built in adjustable LED illuminator
- ▶ Two step adjustable focus with 10X to 200X magnification
- ▶ Image sensor: 1.3 mega pixels
- ▶ Resolution: 1280 x 1024
- ▶ Dimensions: Ø1.4173" x 5.0394" (without stand)
- ▶ Power Supply: 5V DV from USB port
- ▶ Includes stand, two calibration rules – graduations 0.1mm and 1mm, focus ring supports for 80X/150X and 60X/200X magnification, software CD (requires Windows XP SP2, Vista or Windows 7 operating system)



Screen capture of photo measurement

Item #	Price
ISM-PM200S	\$ 313.20

## Wireless Digital Microscope (Optional Stand)

- ▶ Records photos and video
- ▶ Supplied with geometric software for measurement
- ▶ Built in adjustable LED illuminator
- ▶ Two step adjustable focus with 10X to 200X magnification
- ▶ Transmission distance: max. 10m/32.8ft
- ▶ Image sensor: 0.35 mega pixels
- ▶ Resolution: 720 x 480
- ▶ Dimensions: Ø36 x 138mm
- ▶ Power Supply: built in rechargeable battery
- ▶ Includes two calibration rules – graduations 0.1mm and 1mm, focus ring supports for 80X/150X and 60X/200X magnification, software CD, and AC/DC adapter (requires Windows XP SP2, Vista or Windows 7 operating system)



Item #	Price
ISM-WM200	\$ 360.60



Item #	Price
ISM-PM200S-SP1	\$ 106.00

## Portable Hardness Tester

- ▶ Hardness: Leib, Rockwell B, Rockwell C, Vickers, Brinell, Shore
- ▶ Resolution: 1HL, 0.1HRB, 0.1HRC, 1HV, 1HB, 1HS, 1MPa
- ▶ Accuracy: ±6HL (HL=800)
- ▶ Workpiece specifications:
  - min. weight: 11lbs/5kg; min. thickness: 0.2"/5mm; min. thickness of layers: 0.03"/0.8mm;
  - min. radius of curved surface: 0.43"/11mm
- ▶ Working temperature: 32°F-122°F (0°C-50°C)
- ▶ Battery operated (rechargeable), with battery power indicator
- ▶ Large LCD display with back light includes: scale, hardness value, average value, test times, date, impact direction, material
- ▶ Output: wireless IR (infrared) and USB
- ▶ Low and high limit settings
- ▶ Dimensions: 5.9055" x 3.1496" x 0.9449"
- ▶ Supplied in fitted storage case



- ▶ **Includes:**
- 1) Main unit
  - 2) Printer
  - 3) Impact device "D"
  - 4) Cleaning brush for impact device
  - 5) Supporting ring for impact device

Item #	Price
ISH-PHA	\$ 1,803.20



Precision Measuring Instruments

www.insize-usa.com

Insized USA

Tel: 877-846-7403 Fax: 800-345-8656

sales@insize-usa.com

Prices subject to change without notice

apjan1411

