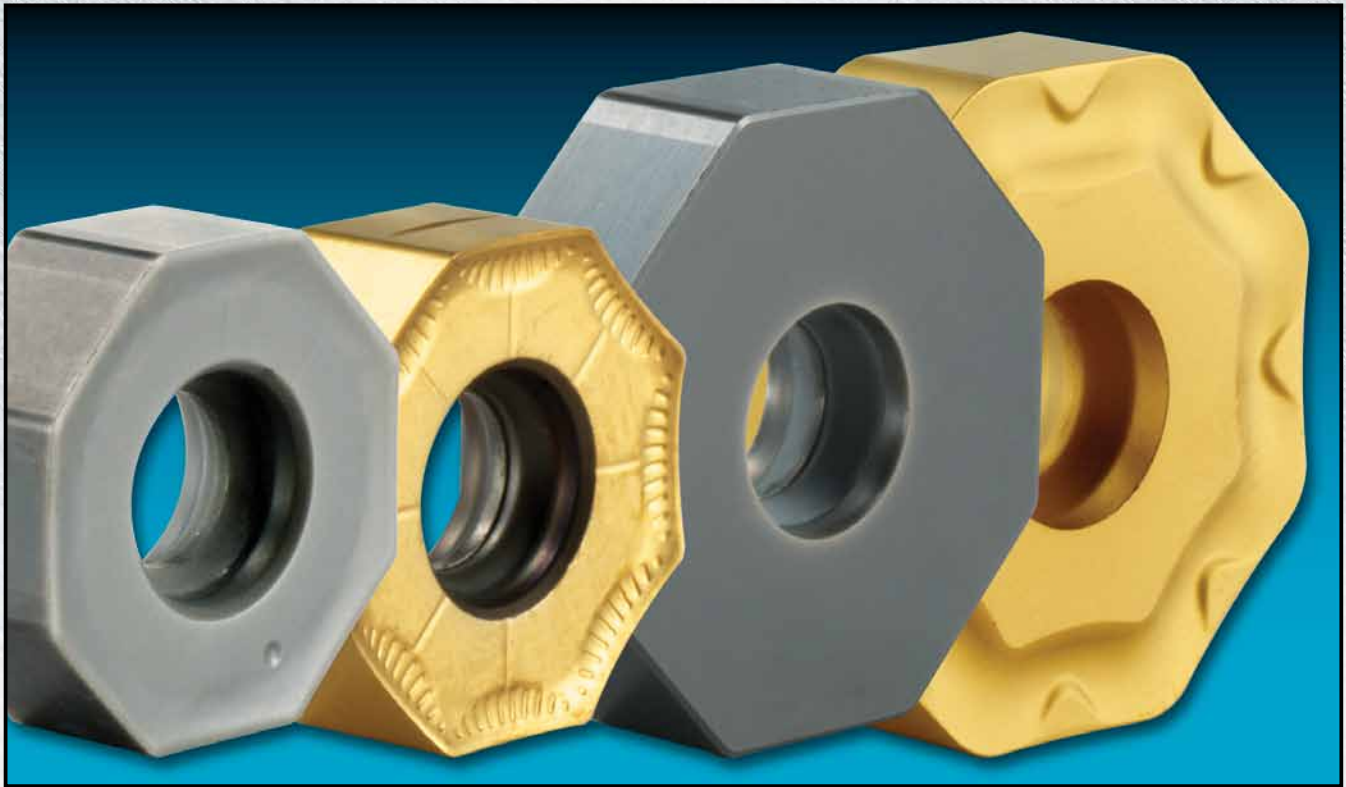


PRODUCT NEWS



OCTOPLUS™

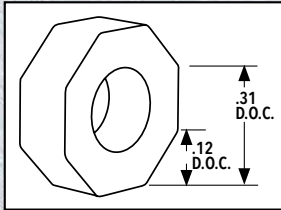
INSERT GEOMETRY EXPANSION

Ingersoll is pleased to announce an insert geometry expansion to the 05 and 09 OctoPlus lines. New to the line are SiNi, Anti-Notch & Flat Top geometries which target performance benefits in iron and steel castings. Also noteworthy are the various corner configurations as it is important to marry a wiper insert with a multipurpose insert that share the same corner. Further, large corner blends target roughing applications as they lend edge strength and eliminate the integrated wiper flats. Please use the following information as a guide for your next OctoPlus insert selection.



PRODUCT NEWS

05 **OCTOPLUS™** **NEW!**

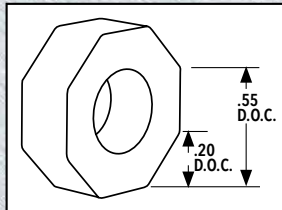


Cutter Series: ON5H/ON6H
Insert Series: ONCU05
1.50-6.00 Dia. Range
.12 DOC - 45 Degree Lead

	Part Number	Hone	Corner	Description
<p>16 x .031" Int. Wiper R.031</p>	ONCU0505ANTN-HR	J	R.031	MULTI-PURPOSE Universal insert geometry with landed edge. Integrated wiper flat for surface finishes between RA32-63. Whether it's steel, iron or titanium, this is an excellent first choice.
<p>Indent .094 Crowned Wiper R.031</p>	ONCU0505ANTN-W	J	R.031	MULTI-PURPOSE WIPER Wiper Insert with 8 indexes (4RH, 4LH) and longer wiper flats. When the advance per revolution does not exceed .094", place one wiper insert in one pocket to improve your surface finish by about 20 points. The indentation on the flank marks the edges that should contact the workpiece. To be married with ONCU0505ANTN-HR.
<p>16 x .031" Int. Wiper R.031</p>	ONCU0505ANEN	A	R.031	KEEN EDGE This keen, high positive chip former is beneficial when machining exotics or managing breakout on the workpiece. Integrated wiper flat produces good surface finishes.
<p>16 x .031" Int. Wiper R.031</p>	ONCU0505ANFN-P	S	R.031	NON-FERROUS Machining of aluminum and non-ferrous metals is the target for this up sharp and polished geometry. Integrated wiper flat produces good surface finishes.
<p>16 x .027" Int. Wiper R.031</p>	NEW! ONCU0505ANN	J	R.031	SiNi This 16 edged silicon nitride insert offers the best productivity when machining iron. Integrated wiper in place for good surface finishes.
<p>Reinforced Edge R.078 .056 .100</p>	NEW! ONCU050520TN	A	R.078	ANTI-NOTCH This unique design puts a keen edge at the corner to diffuse piece part breakout in iron AND adds a reinforced edge to resist notching between .059-.100 DOC. Large corner radius adds strength for roughing applications.

PRODUCT NEWS

09 OCTOPLUS™ **NEW!**



Cutter Series: OP6N RH
Insert Series: ONC_09
2.50-12.00 Dia. Range
.20 DOC
45 Degree Lead

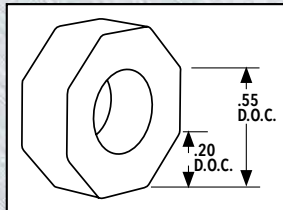


Cutter Series: OP1N RH&LH
Insert Series: ONC_09
3.00-12.00 Dia. Range
.20 DOC
45 Degree Lead

	Part Number	Hone	Corner	Description
	ONCU090612TN-HR	J	R.047	MULTI-PURPOSE Universal insert with landed edge for machining steels, iron and hi-temp alloys. Also equipped with an integrated wiper flat to produce surface finishes between RA32-63. First choice for most applications.
	ONCU090612TN-HR	E	R.047	
	ONCU090612TN-W	J	R.047	MULTI-PURPOSE WIPER Wiper Insert with 8 indexes (4RH, 4LH) and longer wiper flats. When the advance per revolution does not exceed .157", place one wiper insert in one pocket to improve your surface finish by about 20 points. The indentation on the flank marks the edges that should contact the workpiece. To be married with ONCU090612TN-HR.
	ONCU090612FN-P	S	R.047	NON-FERROUS Up sharp and polished insert that targets aluminum and non-ferrous materials. Integrated wiper in place for good surface finishes. Also shows good results in bi-metal with grade IN04S.
	NEW! ONCQ090612TN	A	R.047	FLAT TOP Flat Top geometry with landed edge for heavy duty roughing. Integrated wiper in place for good surface finishes. If other positive geometries notch at the DOC, put this strong edge to work.
	NEW! ONCQ0906ANN	J	R.047	SiNi This 16 edged silicon nitride insert offers the best productivity when machining iron. Integrated wiper in place for good surface finishes.

PRODUCT NEWS

09 **OCTOPLUS™** **NEW!**



Cutter Series: OP6N RH
Insert Series: ONC_09
2.50-12.00 Dia. Range
.20 DOC
45 Degree Lead



Cutter Series: OP1N RH&LH
Insert Series: ONC_09
3.00-12.00 Dia. Range
.20 DOC
45 Degree Lead

	Part Number	Hone	Corner	Description
	NEW! ONCU0906ANTN-HR	J	Faceted	FACETED MULTI-PURPOSE A faceted corner with positive geometry helps avoid breakout on an iron workpiece. The landed edge adds strength.
	NEW! ONCU0906ANTN-W	J	Faceted	FACETED WIPER Wiper Insert with 8 indexes (4RH, 4LH) and longer wiper flats. When the advance per revolution does not exceed .152", place one wiper insert in one pocket to improve your surface finish by about 20 points. The indentation on the flank marks the edges that should contact the workpiece. To be married with ONCU0906ANTN-HR.
	ONCU0906ANFN-WE	A	Faceted	KEEN EDGE This keen, high positive chip former in combination with a faceted corner offers benefits when challenged with workpiece breakout. It also performs well in exotics
	NEW! ONCU090630TN	A	R.120	ANTI-NOTCH This unique design puts a positive edge at the corner to diffuse piece part breakout in iron AND adds a reinforced edge to resist notching between .090-.157 DOC. Large corner radius adds strength for roughing applications.
	NEW! ONCU090638TN-HR	E	R.150	POSITIVE ROUGHER The large corner radius and landed edge make this insert well suited for roughing applications in steel and iron