



New Product Catalog

www.atagroup.co



Introduction	2
10 Good Reasons	3
DIE GRINDER	4
Turbine Pencil Grinder	5
Pencil Grinder	6
High Speed Die Grinder	7
Low Vibration Die Grinder	12
Extended Spindle Die Grinder	13
Extended Body Die Grinder	15
Horizontal Die Grinder	16
GRINDER	17
Medium angle Grinder	18
Large Angle Grinder	20
SANDER	21
Small Angle Sander	22
Medium Angle Sander	24
Low Speed Sander	26
Low Speed Polisher	28
BELT SANDER	31
Belt Sander	32
ACCESSORIES	34
MAINTENANCE	40
NOTES	41

WHY SELECT ata tools

With over 50 years experience, ATA is a global leader in the provision of high end industrial air tools. Our comprehensive portfolio offers a solution for every grinding and finishing application, optimizing processes in terms of economic efficiency, reliability and safety. Our customers come from a wide variety of industries, including automotive, aerospace, foundries, metal fabrication, oil & gas, marine, medical, railway and power & energy.

DEDICATED TO QUALITY ata tools

Quality and continuous improvement is a priority at ATA. We strive for exemplary quality in our products and services. In the procurement of goods and services, we look for partnerships with suppliers that apply the same principles of quality assurance. Our management system is based on ISO 9001.

INNOVATION FROM DAY ONE ata tools

Founded in 1963, ATA was a true pioneer in industrial air tools. Since then we have continued to convince our customers with products and solutions. Our industrial expertise and detailed application know-how leads, time and again to pioneering developments.



Wear Protective Goggles



Wear Protective Mask



Wear Ear Protection



Replacement Motor



Oil



Oil Free



Low Noise



Low Vibration

t: +1 330-928-7744
f: +1 330-849-2977

e: sales@atataools.com
w: www.atagroup.co

ATA Tools Inc., 238 Marc Drive
Cuyahoga Falls, Ohio 44223

R&D INVESTMENT

HIGH QUALITY COMPONENTS

OVER 50 YEARS EXPERIENCE

HIGHLY QUALIFIED DESIGN TEAM

ASSEMBLY PROCESS

ACCREDITATION ISO 9001 QUALITY

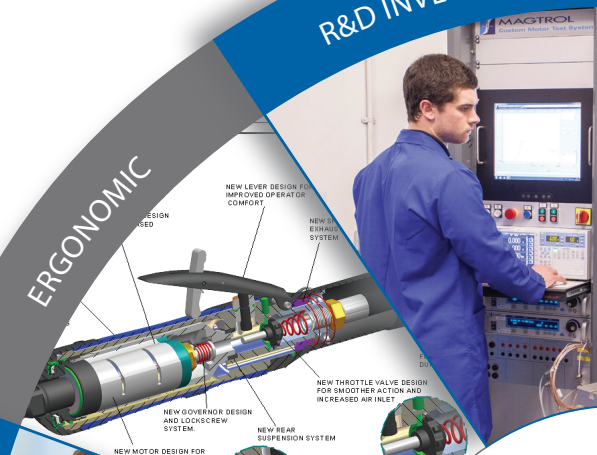
APPLICATION KNOW-HOW

ONE STOP SHOP FOR ALL GRINDING SOLUTIONS

CUSTOMER SERVICE

ERGONOMIC

ata tools

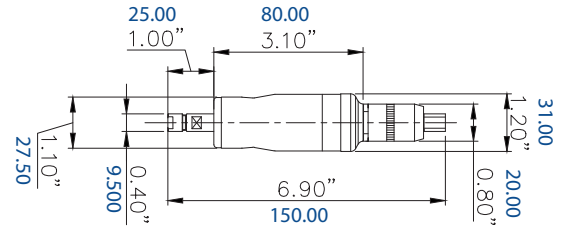


DIE GRINDER



DIE GRINDER

Turbine Pencil Grinder - ST100



Model	ST100-IMP
Speed (rpm)	100,000
Power (hp)	0.06
Power (Watt)	40
Weight (Kg)	0.24
Weight (lb)	0.53
Air consumption (m3/min)	0.17
Air consumption (cfm)	6.00
Noise level (db.(A))	62
Standard Collet Size Metric	3
Collet Options - Metric	2.34mm
Standard Collet Size - Imperial	1/8"
Collet Options - Imperial	3/32"
Exhaust type	Front
Lever type	Roll
Recommended Consumables	
Tungsten Carbide Burs	3mm - 1/8"
Abrasives	Mounted points

FEATURES & BENEFITS

- Oil free-No contamination
- High speed-Fine finish
- Small diameter facilitates precise control
- Minimal tools required for stripping
- Ergo sleeve fitted for operator comfort



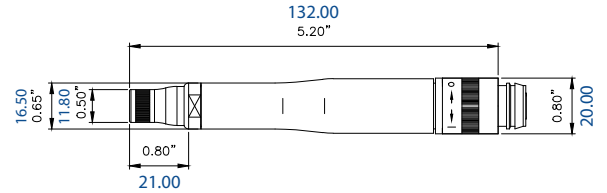
Accessories	Part Number
Spanner	25510100
Hose	17701020



Ordering Information

For more information and / or to place an order, please contact
ATA Customer Service at +330-928-7744 or by email sales@atatools.com

DIE GRINDER Pencil Grinder - SP Line



Model	SP75R-IMP	SP60R-IMP	SP45R-IMP
Speed (rpm)	75,000	60,000	45,000
Power (hp)	0.10	0.10	0.10
Power (Watt)	150	150	150
Weight (Kg)	0.15	0.15	0.15
Weight (lb)	0.33	0.33	0.33
Air consumption (m3/min)	0.20	0.20	0.20
Air consumption (cfm)	7.06	7.06	7.06
Noise level (db.(A))	69	67	60
Standard collet (mm)	3	3	3
Collet options (mm)	2.34mm	2.34mm	2.34mm
Standard collet (")	1/8"	1/8"	1/8"
Collet options (")	3/32"	3/32"	3/32"
Exhaust type	Rear	Rear	Rear
Lever type	Roll	Roll	Roll

FEATURES & BENEFITS

- Slim body design-for intricate work
- High speed-fine finish
- Small diameter facilitates precise control
- Removable collet guard
- Collet guard for improved control & spindle protection



Recommended Consumables	
Tungsten Carbide Burs	3mm - 1/8"
Abrasives	Mounted points



Accessories	Part Number
Spanner	25510100
Hose	17701020
Over hose	17710620
Hose Set	17701220

See the tool in action

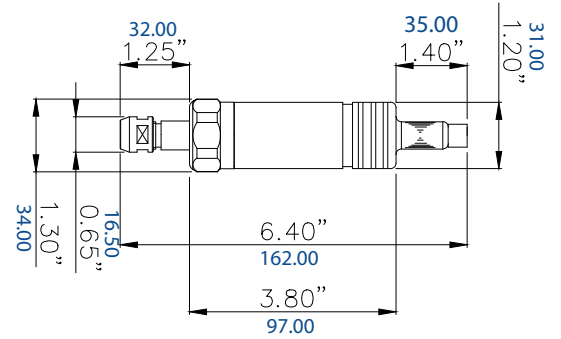
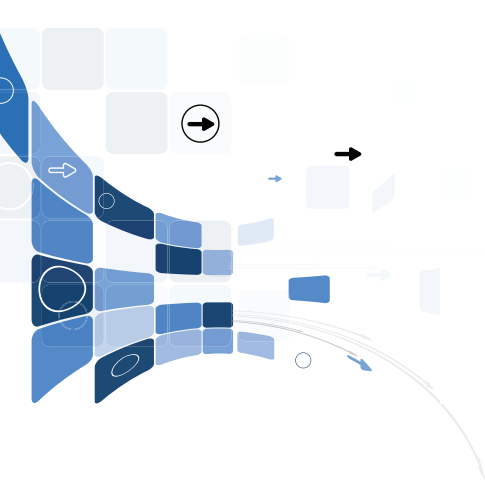


Ordering Information

For more information and / or to place an order, please contact
ATA Customer Service at +330-928-7744 or by email sales@atatools.com

DIE GRINDER

High Speed Grinder S50-IMP



Model	S50-IMP
Speed (rpm)	50,000
Power (hp)	0.25
Power (Watt)	190
Weight (Kg)	0.36
Weight (lb)	0.79
Air consumption (m3/min)	0.45
Air consumption (cfm)	15.89
Noise level (db(A))	70
Standard Collet Size Metric	6
Collet Options - Metric	3
Standard Collet Size - Imperial	1/4"
Collet Options - Imperial	1/8"
Exhaust type	Front
Lever type	Push pull
Recommended Consumables	
Tungsten Carbide Burs	3 to 8mm - 1/8" to 5/16"
Abrasives	Mounted points

FEATURES & BENEFITS

- Compact design for heavy deburring
- Push pull throttle for continuous running
- Powerful motor for grinding and polishing

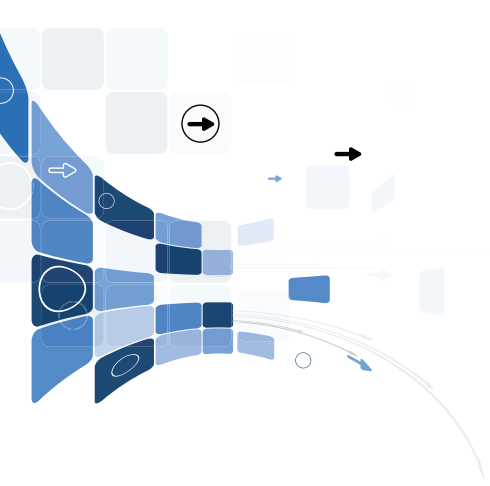


Accessories	Part Number
Spanner	25546200
Spanner	25561110
Hose	17731420
Over hose	17794520
Hose Set	17711020



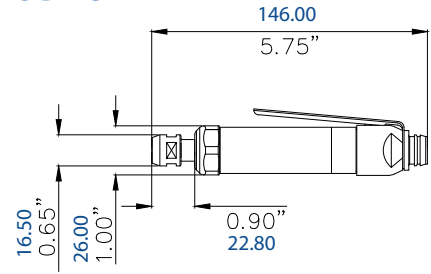
Ordering Information

For more information and / or to place an order, please contact ATA Customer Service at +330-928-7744 or by email sales@atatools.com



DIE GRINDER

High Speed Die Grinder - SD45LR



Model	SD45LR-IMP
Speed (rpm)	45,000
Power (hp)	0.20
Power (Watt)	150
Weight (Kg)	0.24
Weight (lb)	0.53
Air consumption (m3/min)	0.23
Air consumption (cfm)	8.12
Noise level (db.(A))	64
Standard Collet Size Metric	6
Collet Options - Metric	3
Standard Collet Size - Imperial	1/4"
Collet Options - Imperial	1/8"
Exhaust type	Rear
Lever type	Simple lever
Recommended Consumables	
Tungsten Carbide Burs	3 to 8mm - 1/8" to 5/16"
Abrasives	Mounted points

FEATURES & BENEFITS

- Powerful for digging out defects
- Simple lever operation best for where use is not continuous
- Ergo sleeve fitted for operator comfort



Accessories	Part Number
Spanner	25546200
Spanner	25561110
Hose	17701020
Over hose	17710620
Hose Set	17701220

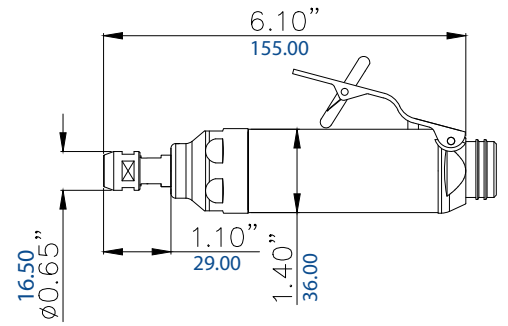
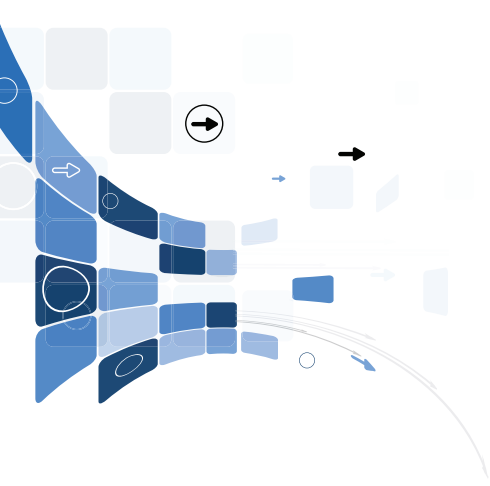


Ordering Information

For more information and / or to place an order, please contact ATA Customer Service at +330-928-7744 or by email sales@atatools.com

DIE GRINDER

High Speed Die Grinder - SD Line



Model	SD37L-IMP	SD30L-IMP	SD26L-IMP	SD37LR-IMP	SD30LR-IMP	SD26LR-IMP
Speed (rpm)	37,000	30,000	25,000	37,000	30,000	25,000
Power (hp)	0.40	0.40	0.40	0.40	0.40	0.40
Power (Watt)	300	300	300	300	300	300
Weight (Kg)	0.46	0.46	0.46	0.46	0.46	0.46
Weight (lb)	1.01	1.01	1.01	1.01	1.01	1.01
Air consumption (m3/min)	0.57	0.57	0.57	0.57	0.57	0.57
Air consumption (cfm)	20.13	20.13	20.13	20.13	20.13	20.13
Noise level (db.(A))	75	73	72	74	73	72
Standard collet (mm)	6	6	6	6	6	6
Collet options (mm)	3	3	3	3	3	3
Standard collet (")	1/4"	1/4"	1/4"	1/4"	1/4"	1/4"
Collet options (")	1/8"	1/8"	1/8"	1/8"	1/8"	1/8"
Exhaust type	Front	Front	Front	Rear	Rear	Rear
Lever type	Safety lever	Safety lever	Safety lever	Safety lever	Safety lever	Safety lever

Recommended Consumables	
Tungsten Carbide Burs	3mm to 12mm - 1/8" to 1/2"



Abrasives

Mounted points

Accessories	Part Number
Spanner	25546200
Spanner	25561110
Hose	17731420
Over hose	17794520
Hose Set	17711020

FEATURES & BENEFITS

- Excellent power/weight ratio
- Used for general de-burring, grinding & polishing
- Compact design suitable for light to medium de-burring applications
- Ergo sleeve fitted for operator comfort



Ordering Information

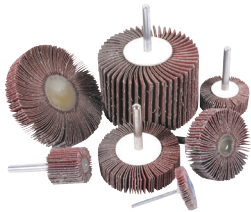
For more information and / or to place an order, please contact ATA Customer Service at +330-928-7744 or by email sales@atatools.com

DIE GRINDER High Speed Die Grinder - P25/2-IMP



Model	P25/2-IMP
Speed (rpm)	25,000
Power (hp)	0.50
Power (Watt)	375
Weight (Kg)	0.60
Weight (lb)	1.32
Air consumption (m3/min)	0.60
Air consumption (cfm)	21.19
Noise level (db.(A))	80
Standard Collet Size Metric	6
Collet Options - Metric	3, 8 & 10
Standard Collet Size - Imperial	1/4"
Collet Options - Imperial	1/8", 3/8"
Exhaust type	Front
Lever type	Safety lever

Recommended Consumables	
Tungsten Carbide Burs	10 & 12mm - 3/8" & 1/2"
Abrasives	Mounted points/Flap wheels/Bands



FEATURES & BENEFITS

- Excellent power/weight ratio
- One handed operation suitable for general de-burring
- Compact design suitable for light to medium de-burring applications



Accessories	Part Number
Spanner	25561210
Spanner	25561110
Hose	17731420
Over house	17794520
Hose Set	17711020

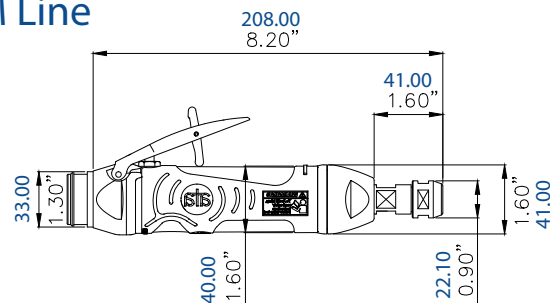


Ordering Information

For more information and / or to place an order, please contact ATA Customer Service at +330-928-7744 or by email sales@atatools.com

DIE GRINDER

High Power Die Grinder - SM Line



Model	SM25L-IMP	SM16L-IMP	SM10L-IMP	SM25LR-IMP	SM16LR-IMP	SM10LR-IMP
Speed (rpm)	25,000	16,000	10,000	25,000	16,000	10,000
Power (hp)	1.10	1.10	1.10	1.10	1.10	1.10
Power (Watt)	820	820	820	820	820	820
Weight (Kg)	0.75	0.75	0.75	0.73	0.73	0.73
Weight (lb)	1.65	1.65	1.65	1.61	1.61	1.61
Air consumption (m3/min)	0.62	0.62	0.62	0.62	0.62	0.62
Air consumption (cfm)	21.89	21.89	21.89	21.89	21.89	21.89
Noise level (db.(A))	74	77	78	74	75	77
Standard collet (mm)	6	6	6	6	6	6
Collet options (mm)	3,8,10	3,8,10	3,8,10	3,8,10	3,8,10	3,8,10
Standard collet (")	1/4"	1/4"	1/4"	1/4"	1/4"	1/4"
Collet options (")	1/8", 3/8"	1/8", 3/8"	1/8", 3/8"	1/8", 3/8"	1/8", 3/8"	1/8", 3/8"
Exhaust type	Front	Front	Front	Rear	Rear	Rear
Lever type	Safety lever	Safety lever	Safety lever	Safety lever	Safety lever	Safety lever

Recommended Consumables	
Tungsten Carbide Burs	12 & 15mm - 1/2" & 9/16"
Abrasives	Mounted points/ Flap wheels/ Bands



Accessories	Part Number
Spanner	25561210
Spanner	25500510
Hose	17712120
Over hose	17795020
Hose Set	17711020

FEATURES & BENEFITS

- Motor-more power less consumption
- Throttle valve for smoother start up action
- New moulded sleeve for improved ergonomics - operator comfort & insulation
- Ergonomically designed lever construction

See the tool in action

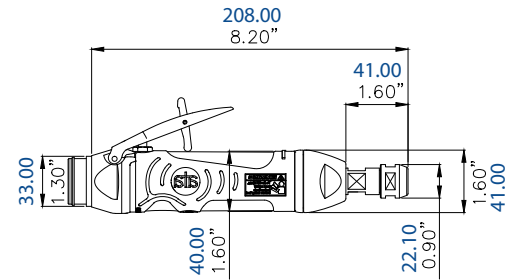
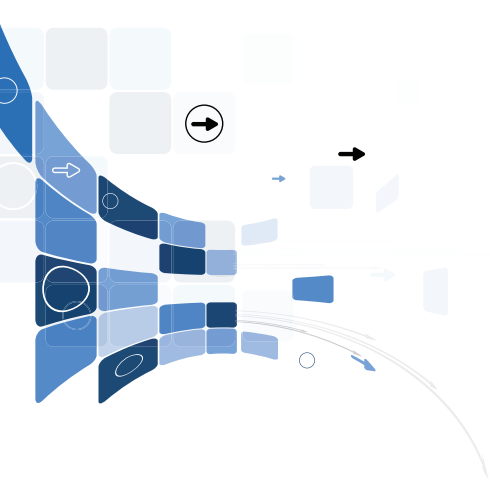


Ordering Information

For more information and / or to place an order, please contact
ATA Customer Service at +330-928-7744 or by email sales@atatools.com

DIE GRINDER

Low Vibration Die Grinder - SMD Line



Model	SMD25LR-IMP	SMD18LR-IMP
Speed (rpm)	25,000	18,000
Power (hp)	1.00	1.00
Power (Watt)	625	625
Weight (Kg)	0.80	0.80
Weight (lb)	1.76	1.76
Air consumption (m3/min)	0.62	0.62
Air consumption (cfm)	21.89	21.89
Noise level (db(A))	77	76
Standard collet (mm)	6	6
Collet options (mm)	3,8,10	3,8,10
Standard collet (")	1/4"	1/4"
Collet options (")	1/8", 3/8"	1/8", 3/8"
Exhaust type	Rear	Rear
Lever type	Safety lever	Safety lever

FEATURES & BENEFITS

- Unique anti-vibration dampening system
- Throttle valve for smoother start up action
- Moulded sleeve for improved ergonomics - operator comfort & insulation
- Ergonomically designed lever construction
- Governor design offering a range of speeds



Recommended Consumables	
Tungsten Carbide Burs	12 to 15mm / 1/2" to 9/16"



Accessories	Part Number
Spanner	25561210
Spanner	25500510
Hose	17712120
Over hose	17795020

See the tool in action

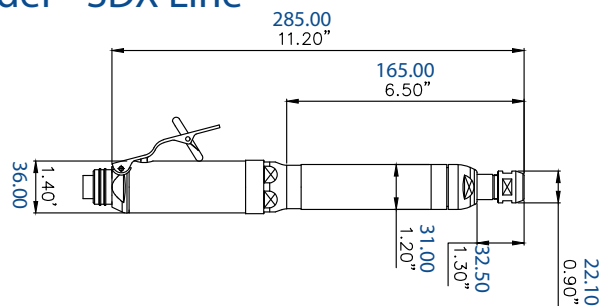
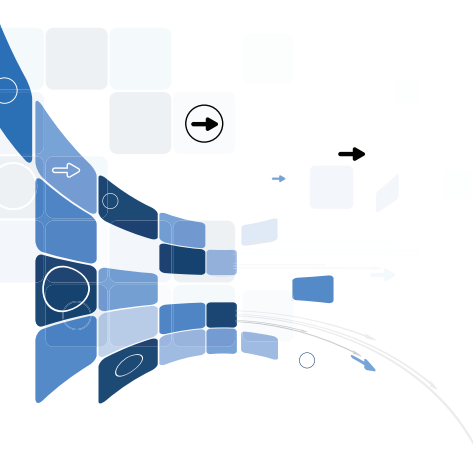


Ordering Information

For more information and / or to place an order, please contact ATA Customer Service at +330-928-7744 or by email sales@atatools.com

DIE GRINDER

Extended Spindle Die Grinder - SDX Line



Model	SDX37LR-IMP	SDX30LR-IMP	SDX26LR-IMP
Speed (rpm)	37,000	30,000	25,000
Power (hp)	0.40	0.40	0.40
Power (Watt)	300	300	300
Weight (Kg)	0.80	0.80	0.80
Weight (lb)	1.76	1.76	1.76
Air consumption (m3/min)	0.57	0.57	0.57
Air consumption (cfm)	20.13	20.13	20.13
Noise level (db.(A))	74	73	72
Standard collet (mm)	6	6	6
Collet options (mm)	3,8,10	3,8,10	3,8,10
Standard collet (")	1/4"	1/4"	1/4"
Collet options (")	1/8", 3/8"	1/8", 3/8"	1/8", 3/8"
Exhaust type	Rear	Rear	Rear
Lever type	Safety lever	Safety lever	Safety lever

FEATURES & BENEFITS

- Double handed for comfort/control & precision
- Excellent power/weight ratio
- Two handed grip gives good control over the process
- Suitable for a range of light grinding applications
- Ergo sleeves fitted for operator comfort



Recommended Consumables	
Tungsten Carbide Burs	3mm to 12mm - 1/8" to 1/2"
Abrasives	Mounted points/Flap wheels/Bands



Accessories	Part Number
Spanner	25561210
Spanner	25561110
Hose	17712120
Over hose	17794520
Hose Set	14411420

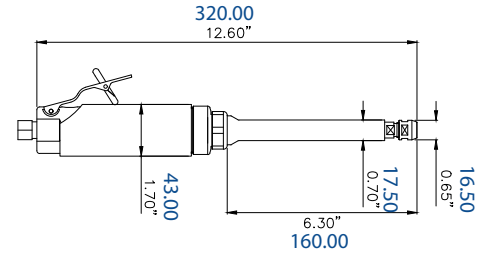
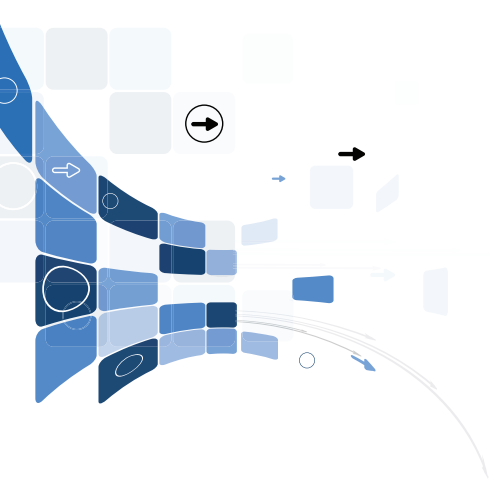


Ordering Information

For more information and / or to place an order, please contact ATA Customer Service at +330-928-7744 or by email sales@atatools.com

DIE GRINDER

Extended Spindle Die Grinder - SX Line



Model	SX22LR-IMP	SX16LR-IMP	SX10LR-IMP
Speed (rpm)	22,000	16,000	10,000
Power (hp)	0.85	0.85	0.85
Power (Watt)	630	630	630
Weight (Kg)	1.17	1.17	1.17
Weight (lb)	2.57	2.57	2.57
Air consumption (m3/min)	0.85	0.85	0.85
Air consumption (cfm)	30.01	30.01	30.01
Noise level (db.(A))	70	65	64
Standard collet (mm)	6	6	6
Collet options (mm)	3,8,10	3,8,10	3,8,10
Standard collet (")	1/4"	1/4"	1/4"
Collet options (")	1/8", 3/8"	1/8", 3/8"	1/8", 3/8"
Exhaust type	Rear	Rear	Rear
Lever type	Safety lever	Safety lever	Safety lever

FEATURES & BENEFITS

- Extended spindle for access in restricted areas
- Small diameter spindle for restricted access applications
- Spindle protected from work piece by spindle housing
- Ergo sleeve fitted for operator comfort

Recommended Consumables		
Tungsten Carbide Burs	15 to 20mm	9/16" to 13/16"
Abrasives	Mounted points	



Accessories	Part Number
Spanner	25561110
Spanner	25546210
Hose	17731420
Overhose	17794520
Hose Set	17711020

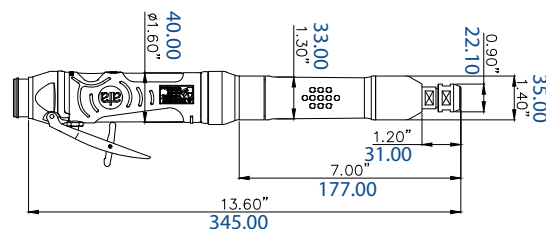
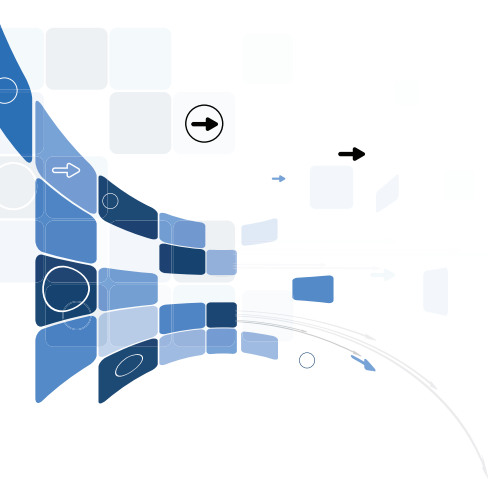


Ordering Information

For more information and / or to place an order, please contact ATA Customer Service at +330-928-7744 or by email sales@atatools.com

DIE GRINDER

Extended Body Die Grinder - SMX Line



Model	SMX25L-IMP	SMX16L-IMP	SMX10L-IMP	SMX25LR-IMP	SMX16LR-IMP	SMX10LR-IMP
Speed (rpm)	25,000	16,000	10,000	25,000	16,000	10,000
Power (hp)	1.10	1.10	1.10	1.10	1.10	1.10
Power (Watt)	820	820	820	820	820	820
Weight (Kg)	1.30	1.30	1.30	1.30	1.30	1.30
Weight (lb)	2.86	2.86	2.86	2.86	2.86	2.86
Air consumption (m3/min)	0.62	0.62	0.62	0.62	0.62	0.62
Air consumption (cfm)	21.89	21.89	21.89	21.89	21.89	21.89
Noise level (db.(A))	78	77	74	77	75	74
Standard collet (mm)	6	6	6	6	6	6
Collet options (mm)	3,8,10	3,8,10	3,8,10	3,8,10	3,8,10	3,8,10
Standard collet (")	1/4"	1/4"	1/4"	1/4"	1/4"	1/4"
Collet options (")	1/8", 3/8"	1/8", 3/8"	1/8", 3/8"	1/8", 3/8"	1/8", 3/8"	1/8", 3/8"
Exhaust type	Front	Front	Front	Rear	Rear	Rear
Lever type	Safety lever	Safety lever	Safety lever	Safety lever	Safety lever	Safety lever

Recommended Consumables	
Tungsten Carbide Burs	15, 20 & 25mm 9/16", 13/16" & 1"
Abrasives	Mounted points, flap wheels, bands



Accessories	Part Number
Spanner	25561210
Spanner	25561110
Hose	17712120

FEATURES & BENEFITS

- Spider coupling-Improved transmission strength
- Motor more power less consumption
- Throttle valve for smoother start up action
- Ergonomically designed lever construction
- Governor design offering a range of speeds

See the tool in action

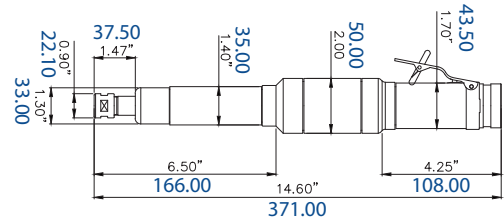
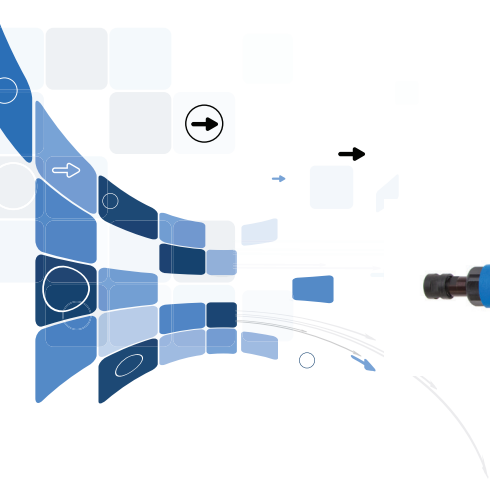


Ordering Information

For more information and / or to place an order, please contact
ATA Customer Service at +330-928-7744 or by email sales@atatools.com

DIE GRINDER

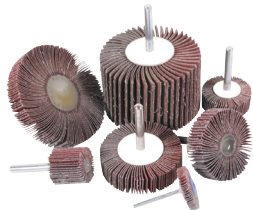
Horizontal Die Grinder - SHG18LR-IMP



Model	SHG18LR-IMP
Speed (rpm)	18,000
Power (hp)	1.50
Power (Watt)	1100
Weight (Kg)	2.50
Weight (lb)	5.50
Air consumption (m3/min)	1.13
Air consumption (cfm)	39.90
Noise level (db.(A))	70
Standard Collet Size Metric	6
Collet Options - Metric	3,8,10
Standard Collet Size - Imperial	1/4"
Collet Options - Imperial	1/8", 3/8"
Exhaust type	Rear
Lever type	Safety lever
Recommended Consumables	
Tungsten Carbide Burs	15 & 20mm - 9/16" & 13/16"
Abrasives	Flap wheel/Large abrasives wheels

FEATURES & BENEFITS

- High power/weight ratio compared with high cycle grinders
- Double handed operation for improved control
- Robust for heavy duty applications
- Suitable for use with 15mm tungsten carbide burs
- Ergo sleeve fitted for operator comfort



Accessories	Part Number
Spanner	25561210
Spanner	25561110
Hose	17700320
Over hose	17700520
Hose Set	17711020



Ordering Information

For more information and / or to place an order, please contact ATA Customer Service at +330-928-7744 or by email sales@atatools.com

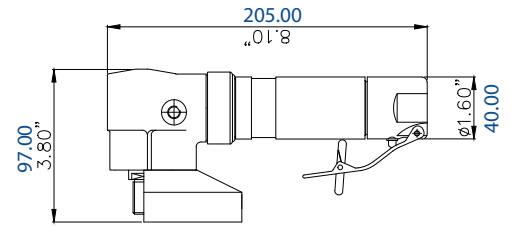
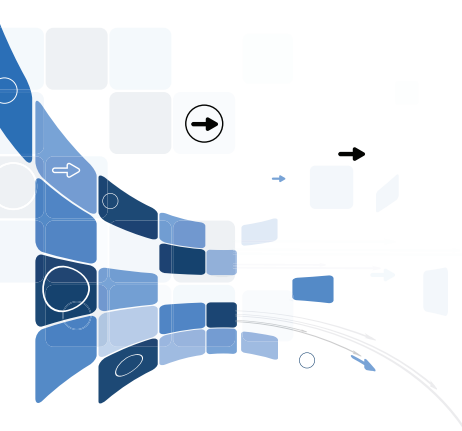


GRINDER



GRINDER

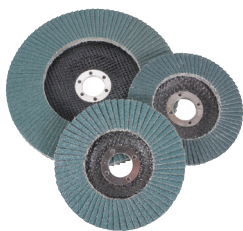
Medium Angle Grinder - RA13 Line



Model	RA13-100-IMP	RA13-115-IMP
Speed (rpm)	13,000	13,000
Power (hp)	1.10	1.10
Power (Watt)	820	820
Weight (Kg)	1.60	1.60
Weight (lb)	3.52	3.52
Air consumption (m3/min)	0.92	0.92
Air consumption (cfm)	32.49	32.49
Noise level (db.(A))	73	73
Exhaust type	Front	Front
Lever type	Safety lever	Safety lever
Recommended Consumables		
Abrasives	Grinding discs, Flap discs and Fiber discs	

FEATURES & BENEFITS

- One or two handed operation possible
- Suitable for medium sanding applications
- Available as a sander or grinder.
- Excellent power / weight ratio
- Ergo sleeve fitted for operator comfort



Accessories	Part Number
Pin Key (RA13-100-IMP)	25566210
Pin Key (RA13-115-IMP)	25541910
Spanner	25561110
Hose	17731420
Over hose	17794520
Hose Set	17711020



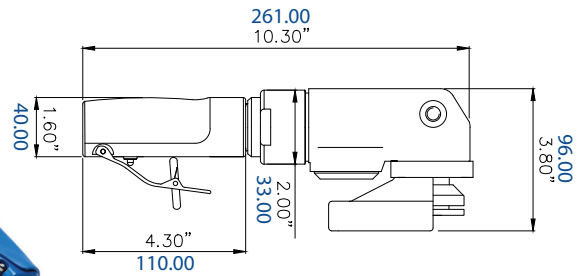
Ordering Information

For more information and / or to place an order, please contact
ATA Customer Service at +330-928-7744 or by email sales@atatools.com

GRINDER

Medium Angle

Grinder - RA14 Line



Model	RA14-100-DS1-IMP	RA14-115-DS1-IMP	RA14-125-DS1-IMP	RA14-100-PA4-IMP	RA14-115-PA4-IMP	RA14-125-PA4-IMP
Speed (rpm)	15,000	13,000	12,000	15,000	13,000	12,000
Power (hp)	1.50	1.50	1.50	1.50	1.50	1.50
Power (Watt)	1100	1100	1100	1100	1100	1100
Weight (Kg)	1.90	1.90	1.90	1.90	1.90	1.90
Weight (lb)	4.18	4.18	4.18	4.18	4.18	4.18
Air consumption (m3/min)	1.13	1.13	1.13	1.13	1.13	1.13
Air consumption (cfm)	39.90	39.90	39.90	39.90	39.90	39.90
Noise level (db.(A))	79	79	79	78	77	75
Exhaust type	Diffuser	Diffuser	Diffuser	Piston	Piston	Piston
Lever type	Safety lever	Safety lever	Safety lever	Safety lever	Safety lever	Safety lever

Recommended Consumables	
Abrasives	Grinding discs, Flap discs and Fiber disc



Accessories	Part Number
Pin Key	25566210
Spanner	25561210
Allen Key	10911800
Hose	17733820
Over hose	17700520

FEATURES & BENEFITS

- High speed - fine finish
- Small diameter facilitates precise control
- Minimal tools required for stripping
- Ergo sleeve fitted for operator comfort

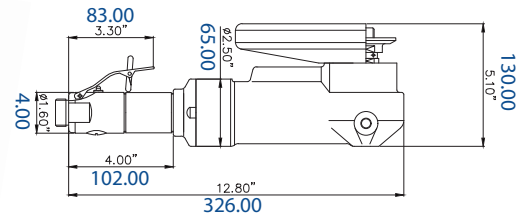
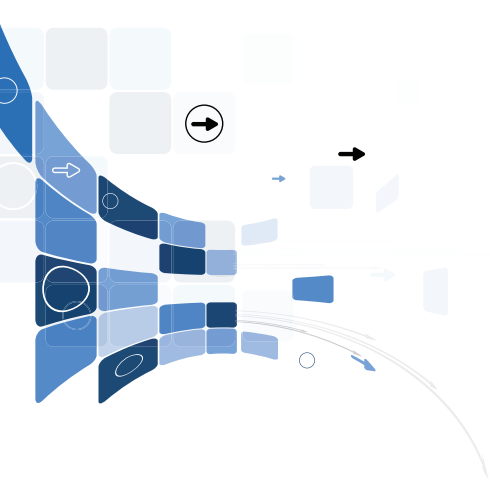


Ordering Information

For more information and / or to place an order, please contact ATA Customer Service at +330-928-7744 or by email sales@atatools.com

GRINDER

Large Angle Grinder - RAXAVH Line



Model	RA8AVH-IMP	RA6AVH-IMP
Speed (rpm)	8,500	6,500
Power (hp)	2.00	2.00
Power (Watt)	1500	1500
Weight (Kg)	3.50	3.50
Weight (lb)	7.70	7.70
Air consumption (m3/min)	1.90	1.90
Air consumption (cfm)	67.09	67.09
Noise level (db.(A))	79	79
Exhaust type	Front	Front
Lever type	Safety lever	Safety lever
Recommended Consumables		
Abrasives	Grinding discs and Flap discs	

FEATURES & BENEFITS

- Powerful motor for heavy grinding
- Powerful and fast to ensure fast stock removal
- Robust and reliable design for arduous applications
- Anti-vibration side handle
- Ergo sleeve fitted for operator comfort



Accessories	Part Number
Spanner	25561210
Pin Key	25541910
Allen Key	10911800
Hose	17731220



Ordering Information

For more information and / or to place an order, please contact ATA Customer Service at +330-928-7744 or by email sales@atatools.com

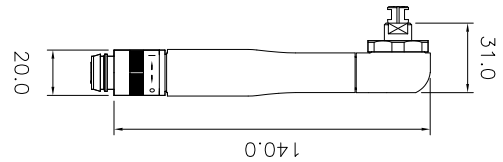
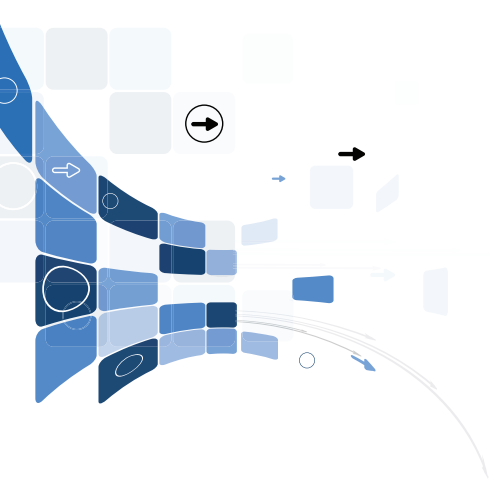


SANDERS



SANDER

Small Angle Sander - RP25R-IMP



Model	RP25R-IMP
Speed (rpm)	25,000
Power (hp)	0.15
Power (watt)	110
Weight (Kg)	0.23
Weight (lb)	0.51
Air Consumption (m3/min)	0.20
Air Consumption (cfm)	7.06
Noise level (db.(A))	68
Stand collet size (imperial)	1/8"
Collet options (imperial)	3/32"
Exhaust type	Rear
Lever type	Roll throttle

FEATURES & BENEFITS

- Slim Body Right Angle Sander designed for Precision work / Deburring and Sanding
- Suitable for Burs and QCD Abrasives
- Small angle head to facilitate access to restricted areas

Recommended Consumables	
Abrasives	QCD, Sanding discs, Flap discs
Tungsten Carbide Burs	1/8" to 1/4"



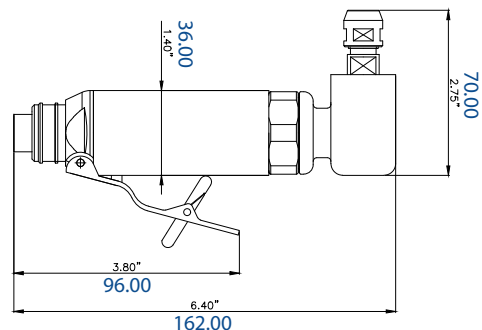
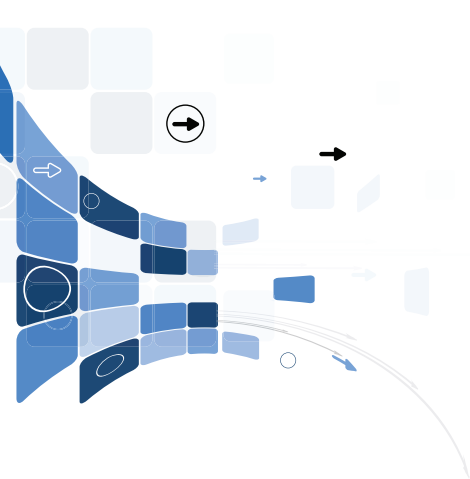
Accessories	Part Number
Spanner	25532210 / 25535210 / 25532110
Hose	17701020
Over hose	17710620
Hose set	17701220



Ordering Information

For more information and / or to place an order, please contact ATA Customer Service at +330-928-7744 or by email sales@atatools.com

SANDERS Small Angle Sander - RA20-10 Line



Model	RA20LR-IMP	RA10LR-IMP	RA20LRX -75-IMP	RA20LR -125-IMP	RA10LRX -75-IMP	RA10LRX -125-IMP
Speed (rpm)	20,000	12,000	20,000	20,000	12,000	12,000
Power (hp)	0.40	0.40	0.40	0.40	0.40	0.40
Power (Watt)	300	300	300	300	300	300
Weight (Kg)	0.52	0.52	0.65	0.70	0.65	0.70
Weight (lb)	1.14	1.14	1.43	1.54	1.14	1.14
Air consumption (m3/min)	0.57	0.57	0.57	0.57	0.57	0.57
Air consumption (cfm)	20.13	20.13	20.13	20.13	20.13	20.13
Noise level (db.(A))	74	71	74	74	71	71
Standard collet (mm)	6	6	6	6	6	6
Collet options (mm)	3	3	3	3	3	3
Standard collet (")	1/4"	1/4"	1/4"	1/4"	1/4"	1/4"
Collet options (")	1/8"	1/8"	1/8"	1/8"	1/8"	1/8"
Exhaust type	Rear	Rear	Rear	Rear	Rear	Rear
Lever type	Safety lever	Safety lever	Safety lever	Safety lever	Safety lever	Safety lever

FEATURES & BENEFITS FOR LR MODELS

- Ergonomic design for operator comfort
- Excellent power/weight ratio
- Collet & direct attachment facilitates use with burs & abrasive discs
- Suitable for use with 50mm sanding discs

FEATURES & BENEFITS FOR LRX-75 MODELS

- Ergonomic design for operator comfort
- Excellent power/weight ratio
- Needle roller bearing in spindle housing for improved spindle support
- 75mm extended spindle for sanding in difficult to access areas
- Removable thread cover when not using extended spindles

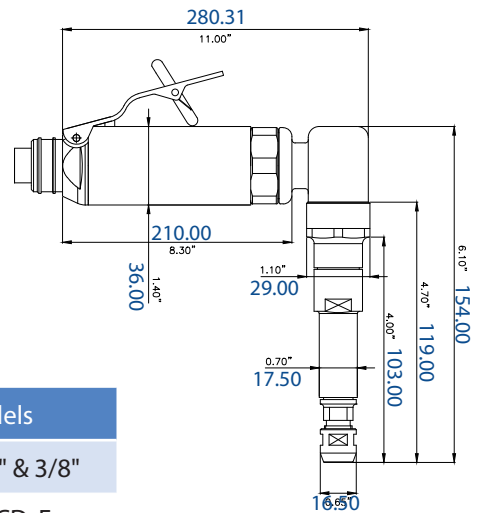
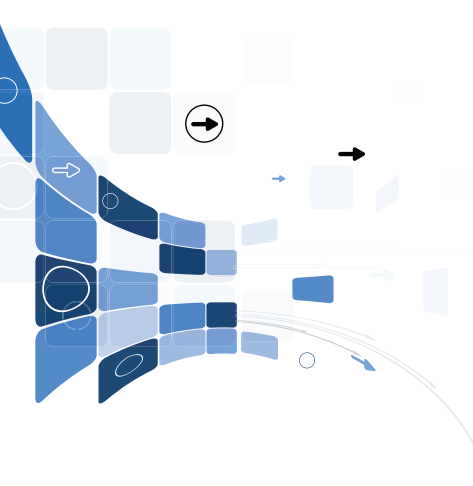


Ordering Information

For more information and / or to place an order, please contact ATA Customer Service at +330-928-7744 or by email sales@atatools.com

SANDERS

Small Angle Sander - RA20-10 Line Contd.



Recommended Consumables	RA20 Models	RA10 Models
Tungsten Carbide Burs	6 & 8mm - 1/4" & 5/16"	8 & 10mm - 5/16" & 3/8"
Abrasives	Sanding discs/QCD, Fan grinders, Mounted points	Sanding discs/QCD, Fan grinders, Mounted points

Accessories	Part Number
Spanner	25561110
Spanner	25546210
Hose	17712120
Over hose	17794520
Hose Set	17711420



FEATURES & BENEFITS FOR LRX-125 MODELS

- Ergonomically designed/compact
- Excellent power/weight Ratio
- Needle roller bearing in spindle housing for improved spindle support
- 125mm extended spindle for sanding in difficult to access areas
- Removable thread cover when not using extended spindles

See the tool in action

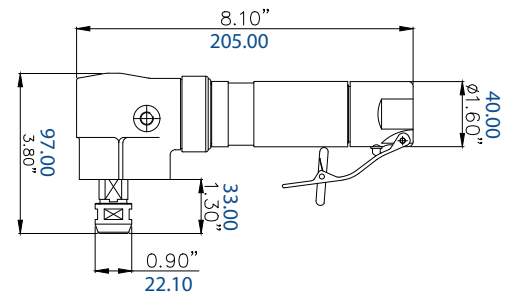


Ordering Information

For more information and / or to place an order, please contact ATA Customer Service at +330-928-7744 or by email sales@atatools.com

SANDER

Medium Angle Sander - RA13C-IMP



Model	RA13C-IMP
Speed (rpm)	13,000
Power (hp)	1.10
Power (Watt)	820
Weight (Kg)	1.50
Weight (lb)	3.30
Air consumption (m3/min)	0.92
Air consumption (cfm)	32.49
Noise level (db.(A))	72
Standard Collet Size Metric	6
Collet Options - Metric	3,8,10
Standard Collet Size - Imperial	1/4"
Collet Options - Imperial	1/8", 3/8"
Exhaust type	Front
Lever type	Safety lever

Recommended Consumables	
Tungsten Carbide Burs	12 & 15mm - 1/2" & 9/16"

Abrasives Fan grinders, Sanding discs, Mounted points



Accessories	Part Number
Spanner	25561210
Spanner	25561110
Hose	17731420
Over hose	17794520
Hose Set	17711020

FEATURES & BENEFITS

- One or two handed operation possible
- Suitable for sanding applications
- Collet design to allow use with burs or abrasives
- Range of collet options available
- Ergo sleeve fitted for operator comfort

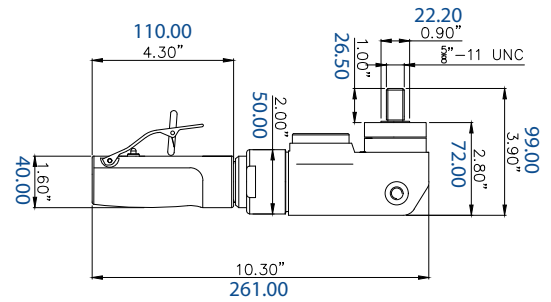


Ordering Information

For more information and / or to place an order, please contact ATA Customer Service at +330-928-7744 or by email sales@atatools.com

SANDER

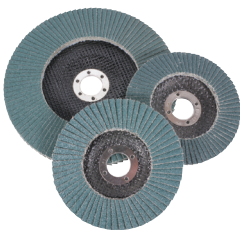
Medium Angle Sander - RA14S-125PA5-IMP



Model	RA14S-125PA5-IMP
Speed (rpm)	9,000
Power (hp)	1.50
Power (Watt)	1100
Weight (Kg)	1.90
Weight (lb)	4.19
Air consumption (m3/min)	1.13
Air consumption (cfm)	39.90
Noise level (db.(A))	75
Exhaust type	Piston
Lever type	Safety lever
Recommended Consumables	
Abrasives	Sanding discs

FEATURES & BENEFITS

- Modified gear set for increased torque during grinding
- Durable/robust design
- Auto-balancer & anti-vibration side handle to reduce vibration
- Piston type exhaust for reduced noise



Accessories	Part Number
Spanner	25541910
Hose	17733820
Overhose	17700520
Hose set	17700520

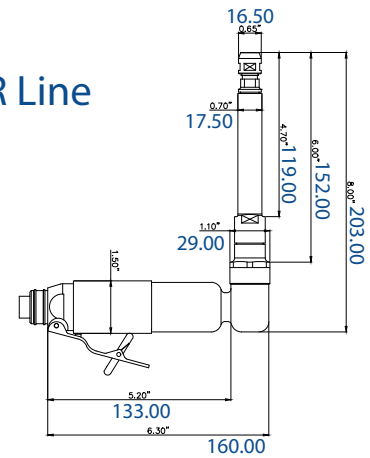
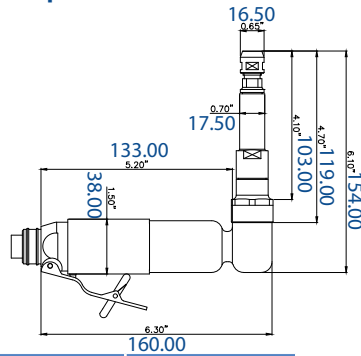


Ordering Information

For more information and / or to place an order, please contact ATA Customer Service at +330-928-7744 or by email sales@atatools.com

SANDER

Low Speed Sander - RAB4LR Line



Model	RAB4LR-IMP	RAB4LR-75-IMP	RAB4LR-125-IMP
Speed (rpm)	3500	3500	3500
Power (hp)	0.40	0.40	0.40
Power (Watt)	300	300	300
Weight (Kg)	0.69	0.70	0.71
Weight (lb)	1.52	1.52	1.52
Air consumption (m3/min)	0.57	0.57	0.57
Air consumption (cfm)	20.13	20.13	20.13
Noise level (db.(A))	67	67	67
Standard collet (mm)	6	6	6
Collet options (mm)	3	3	3
Standard collet (")	1/4"	1/4"	1/4"
Collet options (")	1/8"	1/8"	1/8"
Exhaust type	Rear	Rear	Rear
Lever type	Lever	Lever	Lever

FEATURES & BENEFITS FOR LR MODELS

- Low speed/high torque thanks to planetary gears, ideal for titanium applications
- Direct spindle attachment can be fitted for reduced vibration
- Collet options available
- Ergo sleeve fitted for operator comfort

FEATURES & BENEFITS FOR LRX-75 MODELS

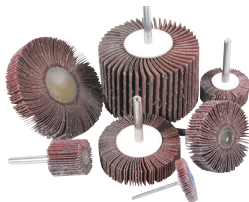
- Same as LR model
- 75mm extended spindle for sanding in difficult to access areas

FEATURES & BENEFITS FOR LRX-125 MODELS

- Same as LR model
- 125mm extended spindle for sanding in difficult to access areas

Recommended Consumables	
Carbide Burs	

Abrasives



Fan grinders, QCD and Mounted points

Accessories	Part Number
Spanner	25561110
Spanner	25546210
Hose	17712120
Over hose	17794520
Hose Set	17711420

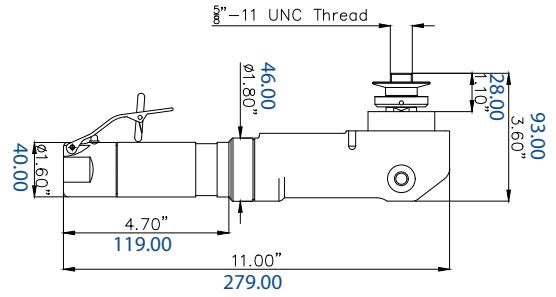
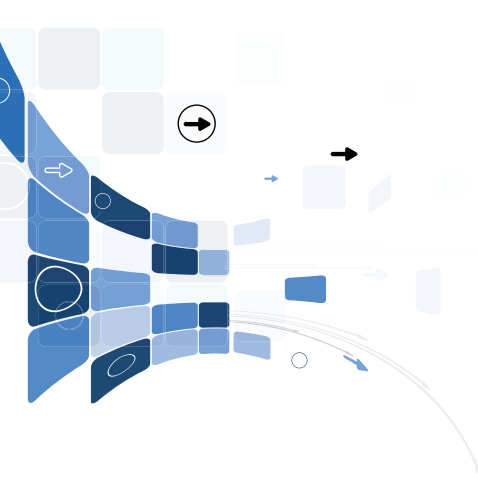


Ordering Information

For more information and / or to place an order, please contact ATA Customer Service at +330-928-7744 or by email sales@atatools.com

SANDER

Low Speed Sander - RA5/2 LINE



Model	RA5-IMP	RA2-IMP
Speed (rpm)	5500	2700
Power (hp)	1.10	1.10
Power (Watt)	820	820
Weight (Kg)	2.75	2.75
Weight (lb)	6.05	6.05
Air consumption (m3/min)	0.92	0.92
Air consumption (cfm)	32.49	32.49
Noise level (db.(A))	69	68
Exhaust type	Front	Front
Lever type	Safety lever	Safety lever

FEATURES & BENEFITS

- Low speed to suit many sanding applications
- Suitable for use with 7" fibre discs for light sanding
- Excellent power/weight ratio
- Ergo sleeve fitted for operator comfort

Recommended Consumables	
Abrasives	Sanding discs and surface conditioning discs



Accessories	Part Number
Pin Key	25541910
Spanner	25561210
Hose	17731420
Over hose	17794520
Hose Set	17711020

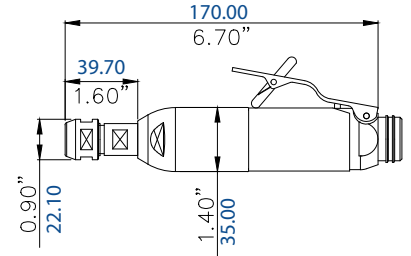
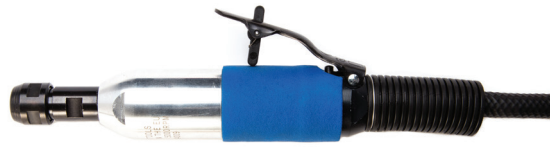


Ordering Information

For more information and / or to place an order, please contact ATA Customer Service at +330-928-7744 or by email sales@atatools.com

SANDER

Low Speed Polisher - SBxLR Line



Model	SB10LR-IMP	SB5LR-IMP
Speed (rpm)	9000	5000
Power (hp)	0.40	0.40
Power (Watt)	300	300
Weight (Kg)	0.60	0.60
Weight (lb)	1.32	1.32
Air consumption (m ³ /min)	0.57	0.57
Air consumption (cfm)	20.13	20.13
Noise level (db(A))	68	68
Standard collet (mm)	6	6
Collet options (mm)	3,8,10	3,8,10
Standard collet (")	1/4"	1/4"
Collet options (")	1/8", 3/8"	1/8", 3/8"
Exhaust type	Rear	Rear
Lever type	Safety lever	Safety lever

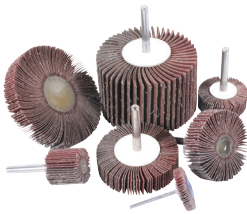
FEATURES & BENEFITS

- Low speed/high torque due to planetary gears, ideal for titanium applications
- Collet options to accommodate range of shank mounted consumables
- Excellent power/weight ratio
- Ergo sleeve fitted for operator comfort

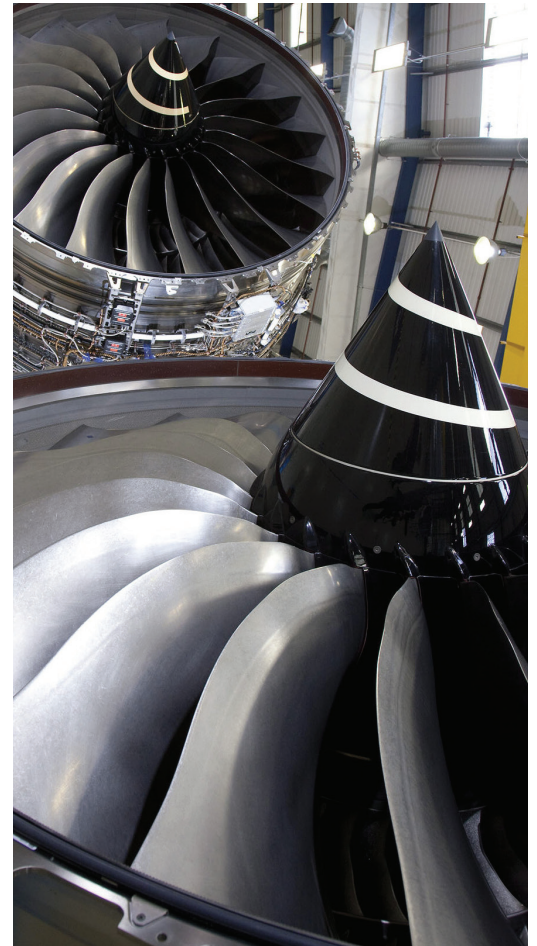
Recommended Consumables	
Carbide Burs	

Abrasives

Fan grinders, QCD, Mounted points, Surface conditioning and sanding discs



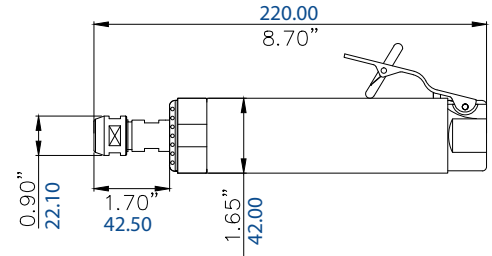
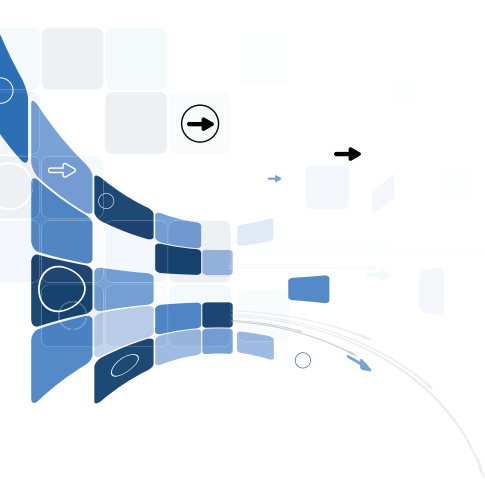
Accessories	Part Number
Spanner	25561110
Spanner	25561210
Hose	17712120
Over hose	17794520
Hose Set	17711420



Ordering Information

For more information and / or to place an order, please contact ATA Customer Service at +330-928-7744 or by email sales@atatools.com

SANDER Low Speed Polisher - S5L-IMP



Model	S5L-IMP
Speed (rpm)	5000
Power (hp)	0.85
Power (Watt)	630
Weight (Kg)	1.30
Weight (lb)	2.86
Air consumption (m3/min)	0.85
Air consumption (cfm)	30.01
Noise level (db.(A))	66
Standard Collet Size Metric	6
Collet Options - Metric	3,8,10
Standard Collet Size - Imperial	1/4"
Collet Options - Imperial	1/8", 3/8"
Exhaust type	Front
Lever type	Safety lever

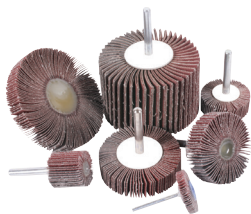
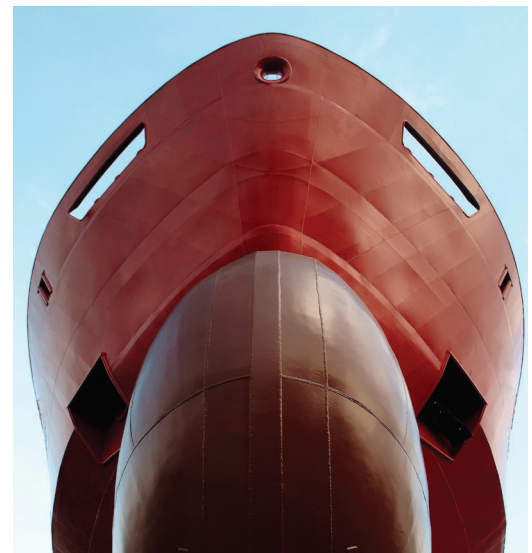
FEATURES & BENEFITS

- Low speed/high torque due to planetary gears
- Suitable for a wide range of sanding applications
- Collet options to accommodate range of shank mounted consumables
- Double handed operation for improved control
- Ergo sleeve fitted for operator comfort

Recommended Consumables	
Carbide Burs	12, 15 & 20mm - 9/16" & 13/16"

Abrasives

Fan grinders, QCD, Mounted points, Surface conditioning and sanding discs



Accessories	Part Number
Spanner	25561110
Spanner	25561210
Hose	17731420
Over hose	17794520
Hose Set	17711020

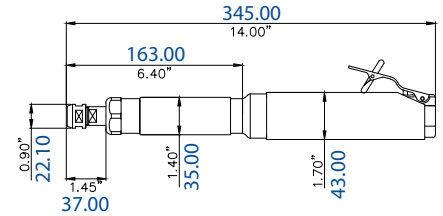
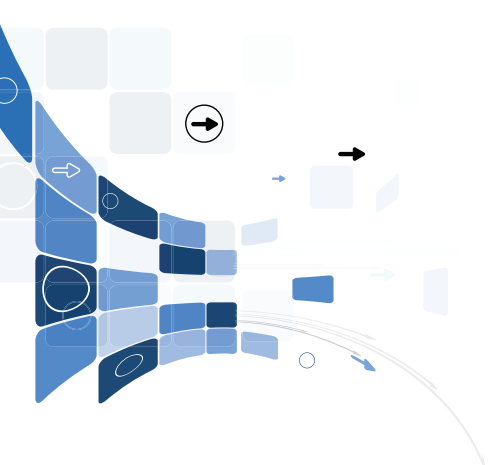


Ordering Information

For more information and / or to place an order, please contact ATA Customer Service at +330-928-7744 or by email sales@atatools.com

SANDER

Low Speed Polisher - STXxL



Model	STX5L-IMP	STX3L-IMP
Speed (rpm)	5000	3000
Power (hp)	0.85	0.85
Power (Watt)	630	630
Weight (Kg)	1.60	1.60
Weight (lb)	3.52	3.52
Air consumption (m3/min)	0.85	0.85
Air consumption (cfm)	30.01	30.01
Noise level (db.(A))	66	64
Standard collet (mm)	6	6
Collet options (mm)	3,8,10	3,8,10
Standard collet (")	1/4"	1/4"
Collet options (")	1/8", 3/8"	1/8", 3/8"
Exhaust type	Front	Front
Lever type	Safety lever	Safety lever

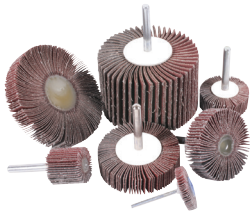
FEATURES & BENEFITS

- Low speed/high torque due to planetary gears
- Suitable for a wide range of sanding applications
- Collet options to accommodate range of shank mounted consumables
- Double handed operation for improved control
- Ergo sleeve fitted for operator comfort

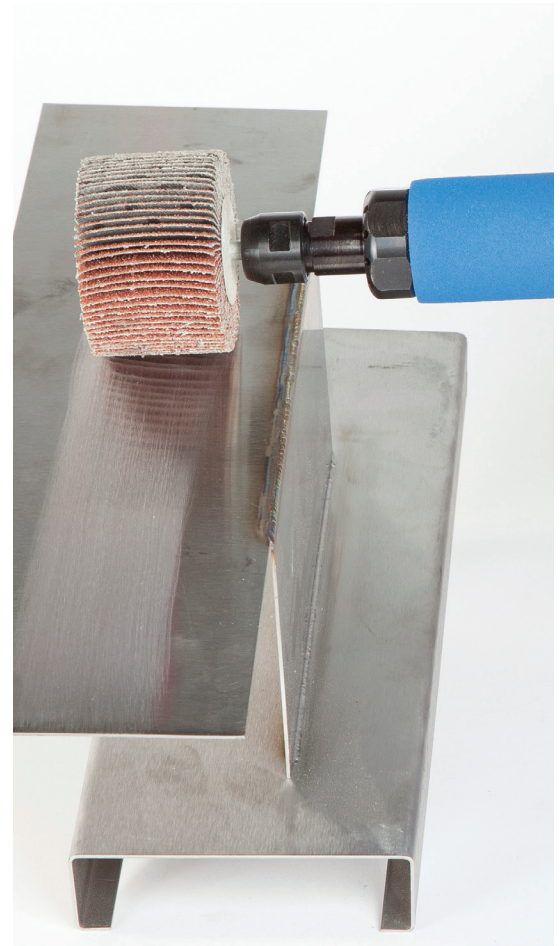
Recommended Consumables	
Carbide Burs	12,15 & 20mm - 9/16", 13/16" & 1"

Abrasives

Fan grinders, QCD, Mounted points, Surface conditioning and sanding discs



Accessories	Part Number
Spanner	25561110
Spanner	25561210
Hose	17731420
Over hose	17794520
Hose Set	17711020



Ordering Information

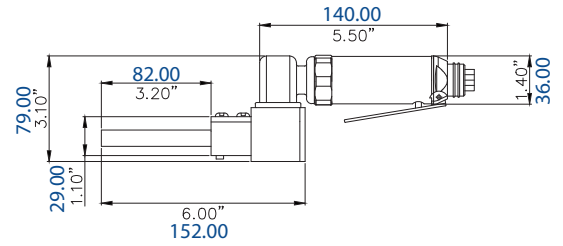
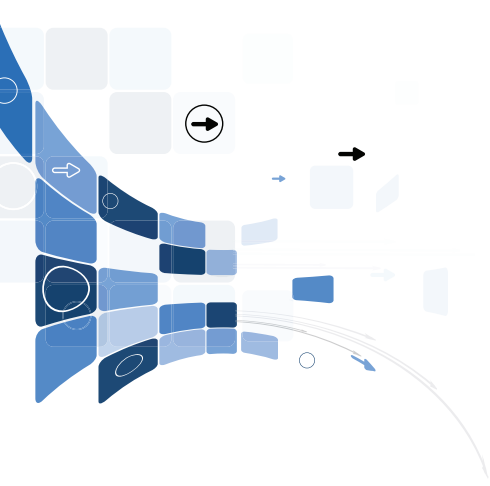
For more information and / or to place an order, please contact ATA Customer Service at +330-928-7744 or by email sales@atatools.com



BELT SANDERS



BELT SANDER RAL20L-IMP



Model	RAL20L-IMP
Speed (rpm)	20000
Power (hp)	0.40
Power (Watt)	300
Weight (Kg)	0.85
Weight (lb)	1.87
Air consumption (m3/min)	0.57
Air consumption (cfm)	20.13
Noise level (db.(A))	74
Exhaust type	Rear
Lever type	Safety lever

Recommended Consumables	
Abrasives	Abrasives and surface conditioning belts

FEATURES & BENEFITS

- Compact design for light sanding applications
- Multiple arms to suit a range of belts
- Belt can be easily replaced
- Ergo sleeve fitted for operator comfort



Accessories	Part Number
Allen Key	10900100
Allen Key	10903100
Hose	17731420
Over hose	17794520
Hose Set	17711020

See the tool in action



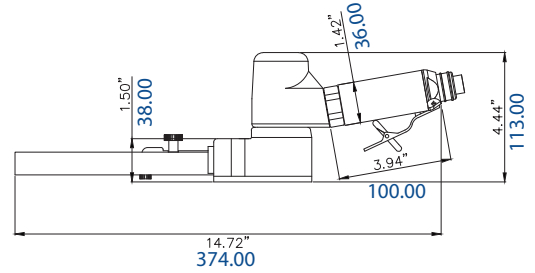
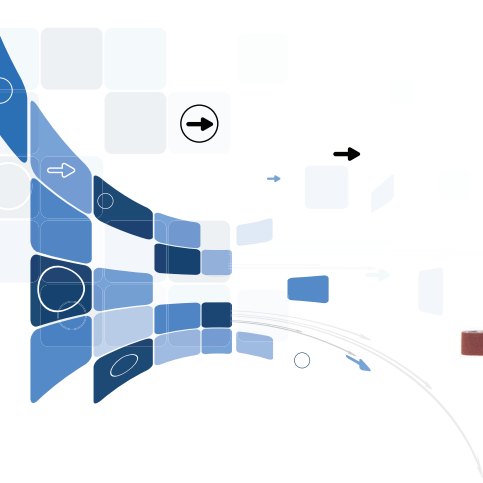
Please refer to accessories page 36 for contact wheels arms and platen



Ordering Information

For more information and / or to place an order, please contact ATA Customer Service at +330-928-7744 or by email sales@atatools.com

BELT SANDER BL16L-IMP



Model	BL16L-IMP
Speed (rpm)	16000
Power (hp)	0.50
Power (Watt)	370
Weight (Kg)	1.30
Weight (lb)	2.86
Air consumption (m3/min)	0.60
Air consumption (cfm)	21.19
Noise level (db.(A))	73
Exhaust type	Front
Lever type	Safety lever

Recommended Consumables	
Abrasives	Abrasives and surface conditioning belts

FEATURES & BENEFITS

- Compact design for light sanding applications
- Multiple arms to suit a range of belts
- Belt can be easily replaced
- Ergo sleeve fitted for operator comfort



See the tool in action



Accessories	Part Number
Allen key	10911800
Allen key	10903100
Hose	17731420
Over hose	17794520
Hose set	17711020



Please refer to accessories page 36 for contact wheels arms and platen



Ordering Information

For more information and / or to place an order, please contact ATA Customer Service at +330-928-7744 or by email sales@atatools.com



ACCESSORIES



ACCESSORIES RA14



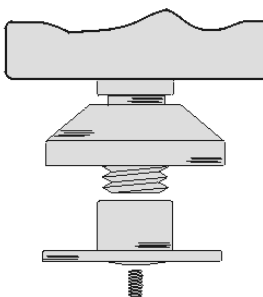
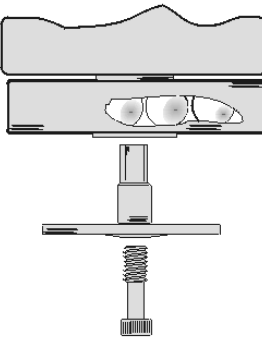
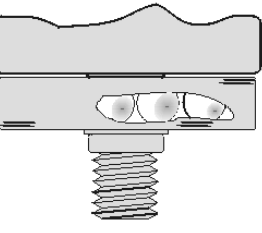
Type S Part No. 14079220



Type A Part No. 14075610

Type	Description	Part number	Picture
S	Solid handle rugged design	140-756-20	140-756-20
A	Rugged all rubber handle. Comfortable ergonomic design with rubber isolation buffer for reduced vibration.	140-792-10	140-792-10

Spindle options for disc grinders

 <p>TYPE 1-22 TYPE 1-16 Standard threaded flange with safety screw. TYPE 1-22 for wheels with 22mm (7/8") center hole. TYPE 1-16 for wheels with 16mm (5/8") center hole. Note: Type 1-22 can be converted to Type 3-5/8 by removing flanges and adding spacer part code 233-105-10</p>	 <p>TYPE 4 Dynamic autobalance system counteracts wheel imbalance. Low vibration levels increase wheel life and reduce operator fatigue. Quick fit locking flange for easy wheel change - use only common hex wrench. Available only for wheels with 22mm (7/8") center hole.</p>	 <p>TYPE 5 Dynamic autobalance system counteracts wheel imbalance. Low vibration levels increase wheel life and reduce operator fatigue. Threaded Spindle for threaded center hubbed wheels or other thread on consumables such as wire brushes. Available only with 5/8-11 thread.</p>
---	---	--

Exhaust options

- P - Piston type exhaust
- D - Diffuser type exhaust



ACCESSORIES Belt Sanders

Standard Contact Wheel Arm for RAL20L

Material	Diameter	Diameter	Belt dimensions	Belt dimensions	Part number
Rubber wheel	16mm	5/8"	305mm x 12mm	12" x 1/2"	515-133-20

Optional Contact Wheel Arms for RAL20L

Material	Diameter	Diameter	Belt dimensions	Belt dimensions	Part number
Rubber wheel	16mm	5/8"	457mm x 12mm	18"-19" x 1/2"	515-134-20
Steel wheel	8mm	5/16"	457mm x 12mm	18" x 1/2"	515-136-20
Steel wheel	8mm	5/16"	305mm x 12mm	12" x 1/2"	515-135-20
Steel wheel	8mm	5/16"	305mm x 6mm	12" x 1/4"	515-137-20
Steel wheel	8mm	5/16"	457mm x 6mm	18" x 1/4"	515-138-20
Rubber wheel	16mm	5/8"	330mm x 12mm	13" x 1/2"	515-100-20
Rubber wheel	8mm	5/16"	305mm x 12mm	12" x 1/2"	515-071-20

All arms are supplied with soft platen fitted

Standard Contact Wheel Arm for BL16L

Material	Diameter	Diameter	Belt dimensions	Belt dimensions	Part number
Rubber wheel*	25mm	1"	480mm x 20mm	18"-19" x 3/4"	516-015-20

Optional Contact Wheel Arms for BL16L

Material	Diameter	Diameter	Belt dimensions	Belt dimensions	Part number
Rubber wheel*	25mm	1"	480mm x 25mm	18"-19" x 1"	516-029-20
Rubber wheel*	25mm	1"	457mm x 20mm	18" x 3/4"	516-027-20
Rubber wheel*	14mm	9/16"	480mm x 20mm	18"-19" x 3/4"	516-028-20
Rubber wheel*	25mm	1"	480mm x 12mm	18"-19" x 1/2"	516-026-20
Rubber wheel**	16mm	5/8"	480mm x 12mm	18"-19" x 1/2"	516-024-20
Rubber wheel**	8mm	5/16"	610mm x 12mm	24" x 1/2"	516-025-20
Rubber wheel	8mm	5/16"	305mm x 12mm	12" x 1/2"	515-071-20

* Please order platen separately - part number : 516-022-20

** Arms supplied with platen fitted



Ordering Information

For more information and / or to place an order, please contact
ATA Customer Service at +330-928-7744 or by email sales@atatools.com

ACCESSORIES



Collets

	133-121-10	133-122-10	133-101-10	133-115-10
Type	CA	CB	CC	CD
Size	Part number	Part number	Part number	Part number
3/32"	N/A	N/A	133-103-10	133-113-10
1/8"	133-123-10	133-126-10	133-102-10	133-112-10
1/4"	133-107-10	133-116-10	N/A	N/A
3/8"	133-125-10	N/A	N/A	N/A
2.34mm	N/A	N/A	133-103-10	133-113-10
3.0mm	133-123-10	133-126-10	133-101-10	133-115-10
6.0mm	133-121-10	133-122-10	N/A	N/A
8.0mm	133-124-10	N/A	N/A	N/A
10.0mm	133-106-10	N/A	N/A	N/A

Special size collets are available upon request. Please contact your customer service representative.

Hoses

Tool Inlet Thread	Hose assemble thread details	Inlet hose	Inlet hose dimensions	Over hose	Over hose dimensions	Hose set	Hose clip	Tool example
M8 Female	M8 Male x 1/4" Male	177-010-20	2 metres x Ø6mm	177-106-20	1 metre x Ø16mm	177-012-20	277-102-10	SP75R-IMP
1/4" Female	1/4" Male x 1/4" male	177-314-20	3 metres x Ø8mm	177-945-20	1 metre x Ø22mm	177-114-20	277-104-10	SD37LR-IMP
1/2" Female	1/4" Male x 3/8" Male	177-338-20	3 metres x Ø12mm	177-005-20	1 metre x Ø50mm	N/A	166-110-00	RA14-125PA4-IMP SHG18LR-IMP
3/4" Female	3/4" Female x 3/4" Female	177-312-20	3 metres x Ø16mm	N/A	N/A	N/A	N/A	RA6AVH-IMP
1/4" Female	1/4" Male x 1/4" male	177-121-20	2 metres x Ø8mm	177-950-20	1 metre x Ø34mm	177-053-20	N/A	SMD25LR-CA-IMP

Part No. 17731420

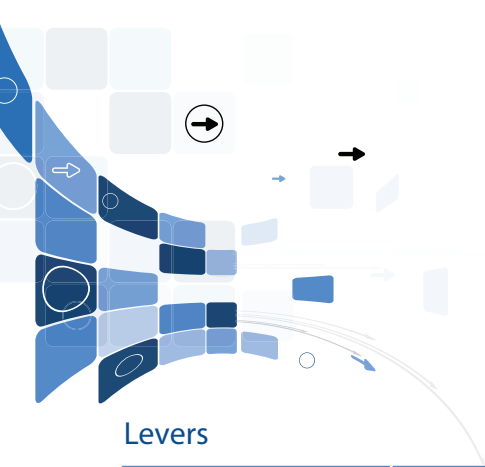


Part No. 17731220



Part No. 17701020





Part No. 140-650-20



Part No. 140-719-20



Part No. 140-651-20

Levers

Type	Associated tools	Part number
Toggle lever	Fits all models except models covered by part 140-651-20	140-650-20
Slide lever	Fits all models except RA14, RA10/20, RAB4LR, SB5LR and SD range	140-719-20
Toggle lever	Fits all SM, SMD and SMX models	140-651-20

Swivel Connector

ATA Swivel connectors are available for all tools with 1/4" inlet thread.

The swivel connector makes it easier to work in awkward areas and helps to reduce operator strain.

Connectors have a 25 degree bending angle and 360 degree swivel with no pressure loss.

They have a very smooth operation and are trouble free.

1/4 Female x 1/4 Male Swivel Connector. Part No: 166-860-00

Vitalizer Unit

The ATA vitalizer units remove moisture and harmful solids from the air stream and create an airborne 'micro fog' of oil which lubricates your ATA air motor, maintaining performance and ensuring long service life.

Part number	Type	Connection Thread	SCFM	CU.M/min
AFLRG-1/4	Automatic drain filter with micro fog lubricator and mounting bracket	1/4"	40	1.2
AFLRG-1/2	Automatic drain filter with regulator, gauge, micro fog lubricator and mounting bracket	1/2"	120	3.4



Lubrication Oil

Gear Lubrication	Part number: GEARLUBE
<p>All ATA right angle grinders and sanders are fitted with high quality gears. In order to maximise the service life of the gears it is necessary to ensure that they are properly lubricated. ATA tools utilize a unique wick system which releases the oil onto the gears when the tool is running and re-absorbs the oil when the tool is stopped. Where tools are in constant use the oil should be replenished daily through the oil screw fitted in the angle head of the tool. ATA recommends the use of ATA Gear lube or any high quality 68 cSt gear oil. Failure to lubricate gears will void all warranties.</p>	

Motor Lubrication	Part number: ATALUBE
<p>ATA recommends the use of ATALUBE air motor oil or other high quality 10cSt oil all vane type motors when using ATA Micro-Fog Lubricators. The oil drip rate can be set as shown in the table, remember that only 10% of the drip is actually delivered to the air supply, the remainder is returned to the main oil reservoir. Failure to properly lubricate a vane motor will void all warranties. Note: With Turbine motors such as model ST 100, lubrication oil should NOT be used.</p>	



Ordering Information

For more information and / or to place an order, please contact ATA Customer Service at +330-928-7744 or by email sales@atatools.com



REPLACEMENT MOTORS

ATA offers a replacement motor facility on various models shown below in the table and with the symbol by the tool throughout the catalogue.

- This allows downtime to be kept to a minimum.
- Replacement motors can be easily installed with proper training and equipment provide by ATA.
- After repair with a replacement motor, the customer has the equivalent of a new tool for a fraction of the cost.
- These motors come with the same guarantee as new tools. The original motor can again be repaired, (Using ATA replacement vanes bearings etc.) in the repair departments own time, or by ATA. The motor can then be ready for the next tool service.
- The use of replacement motors prevents the customer having to carry stock of extra tools to cover for tool breakdown.

Four steps to replace the motor

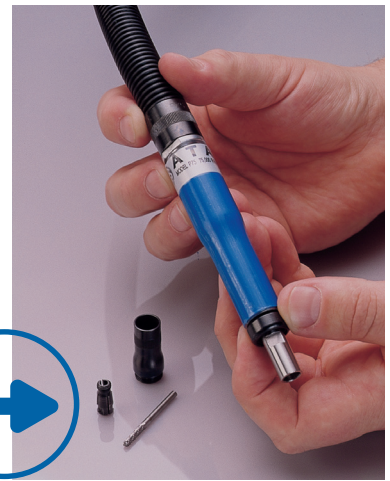
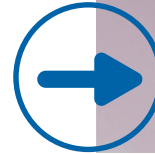
1 Loosen	micro step 1
2 Disassemble	micro step 2
3 Replace motor	micro step 3
4 Tighten	micro step 4

STRIPPING KITS

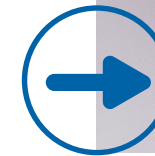
Regular maintenance is a critically important factor when assessing on going efficiency and safety in use. With this regard ATA have a policy of low cost spare parts to enable routine, preventative maintenance to be carried out.

In addition to our in-house repair facility, we offer explosion diagrams for spare parts, stripping instructions and stripping kits are available for all tools. All tools conform with EC machinery directive and its amendments and CE marking directive 2006/42/EC

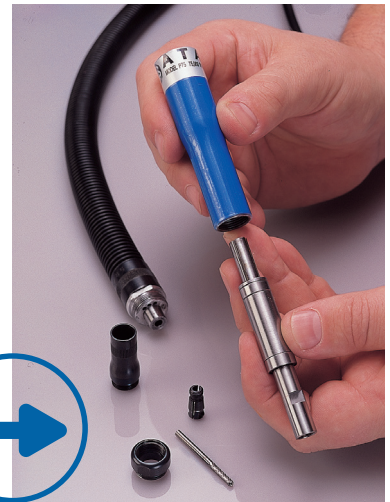
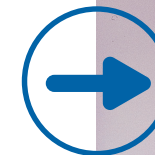
1



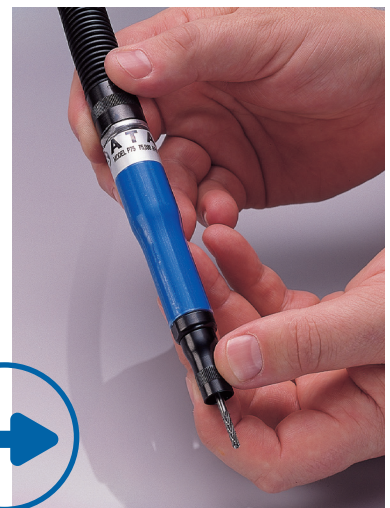
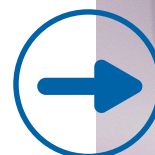
2



3



4





MAINTENANCE

Regular maintenance is a crucial factor when assessing ongoing efficiency and safety of tool use. ATA's policy of pricing quality spare parts economically enables routine preventative maintenance to be carried out cost-effectively. This contributes to reduced risk of vibration related injuries and can extend the life of both tool and consumable.

At ATA we offer to assist customers' vibration management systems. A tool survey is undertaken to start the program to assist customers' risk assessments. Vibration levels are sustained at benchmark levels throughout the tools life. Service, repair and quality checks are all part of the service offered. Tools register maintained for customers.

Stage One

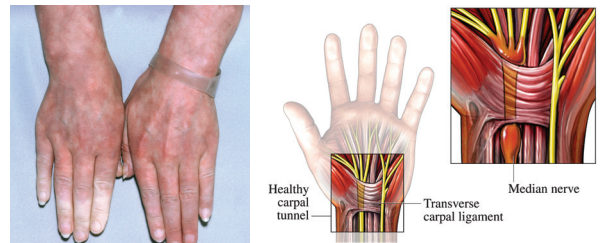
ATA personnel create a tool register where the tools are etched with an identifier. Initial tools for recall are agreed along with the frequency. A recall notice is issued to the appointed customer representative who arranges their prompt return.

Stage Two

The tools are booked into the workshop and a job card created. Tools are inspected and serviced, any remedial work is identified and communicated by written quote, the tools are bench tested for run-out, vibration levels and speed. Information is captured both on a delivery note and on the tool record card. Tools are then returned to the customer. Our service gives customers a guarantee that tools are being maintained to the highest standard, with original parts being used throughout.

This program provides the following benefits:

- Air tools inventory control
- Preventive and proactive maintenance
- Stable maintenance costs
- Efficiency gain thanks to correct pairing of air tool and consumable
- Delivery and collection service
- Technical support to allow continuous process optimization



Managing Vibration

Hand Arm Vibration Syndrome (HAVS) and work related upper limb disorder (WRULD) are collective terms covering a number of potential serious injuries associated with extensive use of percussion and rotary tools, of which vibration white finger (VWF) is the most commonly recognized. It has been widely acknowledged that vibration generated from hand held power tools is the major contributory factor in such ailments and unless managed in line with current EU legislation and standards the loss of potential downtime from potential injury cannot be guaranteed.

All of our products and services have been designed and implemented recognizing the related vibration risk. ATA strives to deliver the customer maximum productivity while ensuring minimum impact to operators health.

Continuous improvements to assist vibration and noise management such as ergo sleeves, auto-balancers, anti-vibration handles and rear exhausts have been designed to optimize efficiency in order to reduce finger on trigger time (FOTT). We aim to ensure consumables are matched to grinders for optimum performance and both are manufactured to comply with all CE regulations. Our close relationship to our sister companies producing burs and other abrasive consumables provides competitive advantage in our unparalleled product knowledge in the best tool to consumable combination offering the lowest possible vibration and highest possible productivity.



Ordering Information

For more information and / or to place an order, please contact
ATA Customer Service at +330-928-7744 or by email sales@atatools.com



NOTES

Horizontal lines for writing notes.



International Offices

t: +353 (0) 49 432 6178
f: +353 (0) 49 432 6298

e: sales@atagroup.ie
w: www.atagroup.co

ATA Burs Ltd., IDA Business & Technology
Park, Killygarry, Cavan, Co. Cavan, Ireland

UK Offices

t: +44 (0) 1530 261 145
f: +44 (0) 1530 262 801

e: sales@atagroupuk.com
w: www.atagroup.co

ATA Garryson Ltd., Spring Road, Ibstock,
Leicestershire, LE67 6LR, United Kingdom

US Offices

t: +1 330-928-7744
f: +1 330-849-2977

e: sales@atatools.com
w: www.atagroup.co

ATA Tools Inc., 238 Marc Drive
Cuyahoga Falls, Ohio 44223