

Radiac
Abrasives

Engineered Grinding Solutions

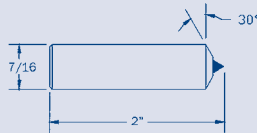


DIAMOND DRESSING TOOLS

www.radiac.com

Single Point Diamond Dressers Disposable Quality

Single points are used for straight dressing on OD, cylindrical and surface applications. Available in disposable and resettable grades.



3/8" x 2 or 7/16 x 2 Straight Shank

Product No.	Carat
RAD-0	1/8
RAD-1	1/4
RAD-2	1/3
RAD-3	1/2
RAD-4	5/8
RAD-5	3/4
RAD-6	1
RAD-7	1-1/4
RAD-8	1-1/2
RAD-10	2

5/8" Head x 3/8, 7/16 or 1/2 Shank

Product No.	Carat
RAD-0-H	1/8
RAD-1-H	1/4
RAD-2-H	1/3
RAD-3-H	1/2
RAD-4-H	5/8
RAD-5-H	3/4
RAD-6-H	1
RAD-7-H	1-1/4
RAD-8-H	1-1/2
RAD-10-H	2

5/8" Indexable Head x 3/8 or 7/16 Shank

Product No.	Carat
RAD-0-TH	1/8
RAD-1-TH	1/4
RAD-2-TH	1/3
RAD-3-TH	1/2
RAD-4-TH	5/8
RAD-5-TH	3/4
RAD-6-TH	1
RAD-7-TH	1-1/4
RAD-8-TH	1-1/2
RAD-10-TH	2

Single Point Diamond Dressers Resettable Quality

Resettable diamonds can be returned to Radiac Superabrasives for resetting. Call 800-223-0457 for more information.

3/8" x 2 or 7/16 x 2 Straight Shank

Product No.	Carat
RAD-OR	1/8
RAD-1R	1/4
RAD-2R	1/3
RAD-3R	1/2
RAD-4R	5/8
RAD-5R	3/4
RAD-6R	1
RAD-7R	1-1/4
RAD-8R	1-1/2
RAD-10R	2

5/8" Head x 3/8, 7/16 or 1/2 Shank

Product No.	Carat
RAD-0-HR	1/8
RAD-1-HR	1/4
RAD-2-HR	1/3
RAD-3-HR	1/2
RAD-4-HR	5/8
RAD-5-HR	3/4
RAD-6-HR	1
RAD-7-HR	1-1/4
RAD-8-HR	1-1/2
RAD-10-HR	2

5/8" Indexable Head x 3/8 or 7/16 Shank

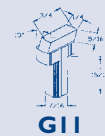
Product No.	Carat
RAD-0-THR	1/8
RAD-1-THR	1/4
RAD-2-THR	1/3
RAD-3-THR	1/2
RAD-4-THR	5/8
RAD-5-THR	3/4
RAD-6-THR	1
RAD-7-THR	1-1/4
RAD-8-THR	1-1/2
RAD-10-THR	2

Impregnated Diamond Dressers

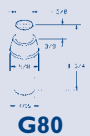
Impregnated dressers are recommended for straight dressing and step dressing on surface, cylindrical and truing operations.



G10



G11

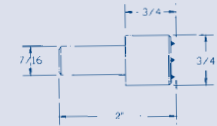


G80

Product No.	Grade
RAD-G10-C	Coarse
RAD-G11-C	Coarse
RAD-G80-C	Coarse
RAD-G10-M	Medium
RAD-G11-M	Medium
RAD-G80-M	Medium
RAD-G10-F	Fine
RAD-G11-F	Fine
RAD-G80-F	Fine

Diamond Cluster Dressers

Cluster Tools are designed for long life straight dressing on large surface areas or on very hard and coarse grinding wheels. Available in Light and Heavy Duty.



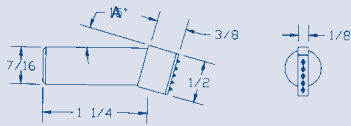
3/8" x 2 or 7/16 x 2 Shank

Product No.	Layers
RAD-CL5-M	1
RAD-CL7-M	1
RAD-CL15-M	3
RAD-CL21-M	3
RAD-CL5-H	1
RAD-CL7-H	1
RAD-CL15-H	3
RAD-CL21-H	3

DIAMOND DRESSING TOOLS

Diamond Cluster Blade Dressers

Diamond Cluster Blade Dressers are recommended for straight dressing on surface, cylindrical and centerless applications. Available in 15 and zero degree.



Product No.	Angle
RAD-BT3-15	15°
RAD-BT5-15	15°
RAD-BT3-0	0°
RAD-BT5-0	0°

PCD Chisels

(.005-.062 radius) also available.

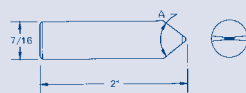
PCD/PCBN Tools



PCD and PCBN Tools for turning, boring, milling, grooving, cut-off and form dressing applications offer the extreme hardness and excellent wear life of diamond or CBN, as well as the toughness of tungsten carbide. These tools afford greatly improved tool life, lower tool cost per part produced, higher cutting speeds, and substantial improvements in productivity. Radiac PCD and PCBN tools are available upon request in a wide variety of standard and special sizes and styles.

Diamond Chisel Point Dressers

Chisel points are designed for precision forming of radii and contours on many toolroom and cylindrical applications.



3/8" x 2 or 7/16 x 2 Shank

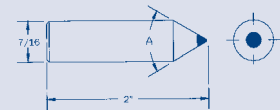
Product No.	Carat
RAD-CH1-90	1/4
RAD-CH2-90	1/3
RAD-CH3-90	1/2
RAD-CH5-90	3/4
RAD-CH6-90	1.0
RAD-CH1-75	1/4
RAD-CH2-75	1/3
RAD-CH3-75	1/2
RAD-CH5-75	3/4
RAD-CH6-75	1.0
RAD-CH1-60	1/4
RAD-CH2-60	1/3
RAD-CH3-60	1/2
RAD-CH5-60	3/4
RAD-CH6-60	1.0

Diamond Selection Table

Wheel Dia.	Max. Width	Carat
3	3/8	1/4
4	1/2	1/3
6	1/2	1/2
6	3/4	5/8
7	1	3/4
10	1-1/2	1
14	1-1/2	1-1/4
16	2	1-1/2
18	2	1-3/4
20	2	2
24	2	2
24	3	2-1/4
24	4	2-1/2
36	6	3

Diamond Cone Point Dressers

Cone points are used where very precise form and radii are required. easily rotated to maintain a sharp point.



3/8" x 2 or 7/16 x 2 Shank

Product No.	Carat
RAD-CP1-90	1/4
RAD-CP2-90	1/3
RAD-CP3-90	1/2
RAD-CP5-90	3/4
RAD-CP6-90	1.0
RAD-CP1-75	1/4
RAD-CP2-75	1/3
RAD-CP3-75	1/2
RAD-CP5-75	3/4
RAD-CP6-75	1.0
RAD-CP1-60	1/4
RAD-CP2-60	1/3
RAD-CP3-60	1/2
RAD-CP5-60	3/4
RAD-CP6-60	1.0



Radiac offers a full line of Diamond Dressers including Fliesen Tools, Radius Dressers, and Phonopoint Radius Dressers for every application.

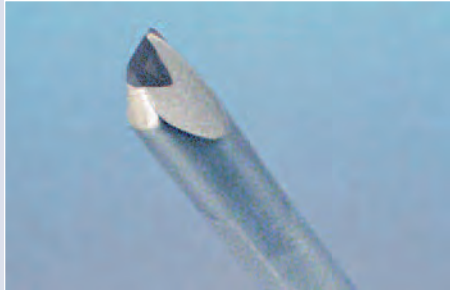
Please contact us at 800-223-0457 for full product line availability and engineering assistance.

Radiac
Abrasives

Illustrated below are four of the most popular radius and form dressing diamond tools used in precision grinding industries today. Following the manufacturer's blueprints, these tools are accurately made and rigorously inspected so that they will produce in grinding wheels intricate forms for which they are designed. Different angles are available upon request.

Pantocrush Dressers

This tool specifically designed as a Moore Company Pantocrush attachment.



Product No.	Included Angle	Radius
RAD-90M-005	90°	.005
RAD-90M-010	90°	.010
RAD-90M-015	90°	.015
RAD-60M-005	60°	.005
RAD-60M-010	60°	.010
RAD-60M-015	60°	.015
RAD-40M-005	40°	.005
RAD-40M-010	40°	.010

Diaform Dressers

Both roughing and finishing tools specifically designed to fit Diaform attachments.



For Roughing

Product No.	Included Angle	Radius
RAD-550	60°	.020
RAD-511	60°	.020

For Finishing

Product No.	Included Angle	Radius
RAD-441	60°	.010
RAD-442	40°	.005
RAD-506	60°	.010
RAD-508	40°	.005

Jones & Lamson

Use this Radiac diamond tool on any Jones & Lamson truing device.



Overall Length 1-1/4"

Product No.	Included Angle	Standard Radii		
RAD-967-1	50°	.004	.007	.011
		.017	.020	
RAD-967-2	40°	.004	.007	.011
		.011	.017	
RAD-967-3	30°	.004	.007	.011
		.011	.017	
RAD-510-90	90°	.004	.007	.011
		.011	.017	
RAD-510-50	60°	.004	.007	.011
		.011	.017	
RAD-510-1	50°	.004	.007	.011
		.011	.017	

Hoglund Engineering

Designed to fit any Hoglund Engineering dressing device.



Product No.	Included Angle	Radius
RAD-106075	60°	.010
RAD-254875	48°	.025
RAD-154262	42°	.015
RAD-254075	40°	.025
RAD-153575	35°	.015

Distributed By

An Authorized Radiac Distributor



www.radiac.com

Radiac Superabrasives Division

101 Kendall Point Drive
Oswego, IL 60543

Tel: 800-223-0457

Fax: 630-898-1796