

**NEW**

# AHB

**TOOLING & MACHINERY**

**COMPLETE METALWORKING SOLUTIONS**

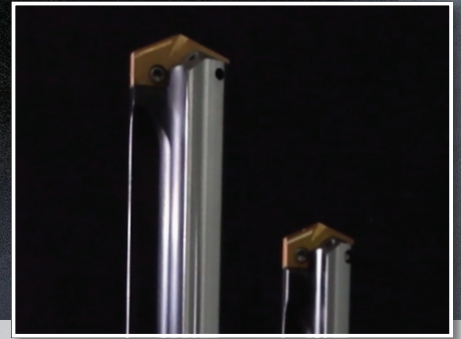
(800) 991-4225

ISO Certified

[www.ahbinc.com](http://www.ahbinc.com)

[customerservice@ahbinc.com](mailto:customerservice@ahbinc.com)

The **best** just got **better**.



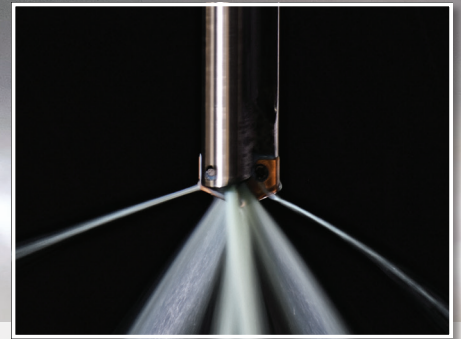
**NEW** HOLDER DESIGN

Optimized flute design for **increased** chip evacuation



**NEW** INSERT DESIGN

ISO specific geometries with a new point design to **simplify** your insert choices



**NEW** COOLANT DESIGN

Proprietary coolant outlet configuration provides **superior** performance even in **low-coolant** applications



**ALLIED MACHINE  
& ENGINEERING**

Holemaking Solutions for Today's Manufacturing

**T-A Pro**™

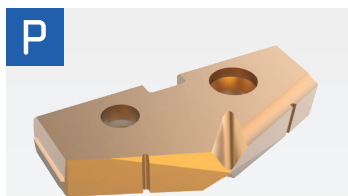
[www.alliedmachine.com](http://www.alliedmachine.com)





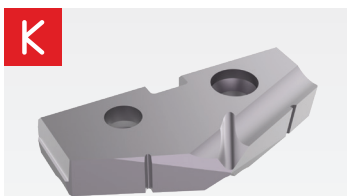
## REDESIGNED INSERTS

Ø 0.437" - 1.882" (11.1mm - 47.8mm)



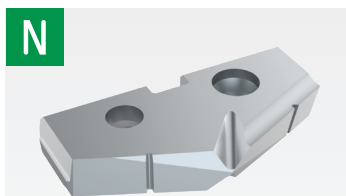
### STEELS

- Designed to provide increased penetration rates and tool life in steel applications
- Superior geometry and edge provides excellent chip control
- Allied's multi-layer AM300 coating increases heat resistance and improves tool life



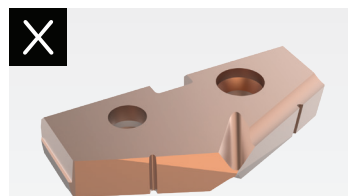
### CAST IRONS

- Uniquely designed for cast/nodular iron applications
- Geometry developed for maximum tool life, reduced exit burr, and improved hole finish
- Allied's multi-layer TiAlN coating provides increased abrasion resistance and tool life



### NON-FERROUS

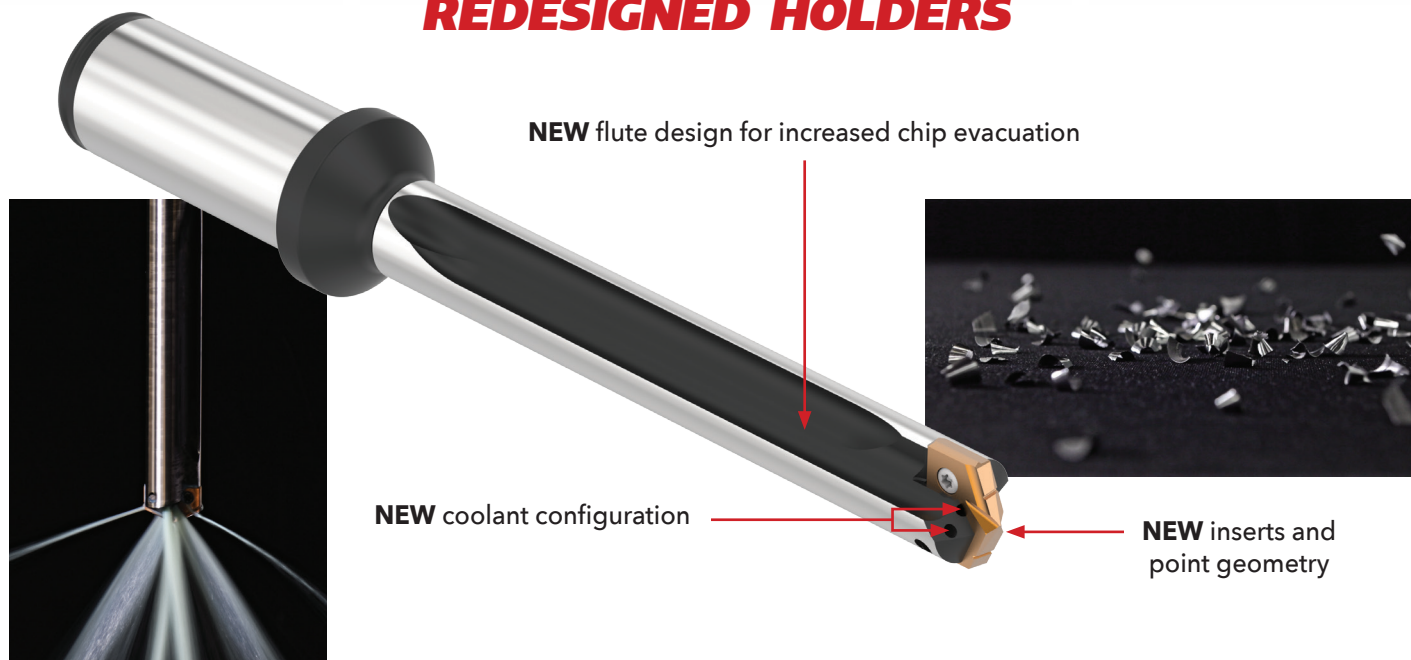
- Designed for application in aluminum, brass, and copper
- The geometry yields excellent chip control in these softer materials
- TiCN coating gives the versatility to run in a variety of materials while reducing buildup



### HIGH-SPEED STEEL

- Improved geometry for excellent chip control in all materials
- Long tool life and high-process security for the most challenging applications
- Allied's multi-layer AM200 coating combines excellent heat resistance and high lubricity for wide application use

## REDESIGNED HOLDERS



Lengths from **1xD** to **15xD**

Stocked in 1xD, 3xD, 5xD, 7xD, 10xD, 12xD & 15xD



**Note:** For optimal performance, T-A Pro inserts should be used with T-A Pro holders.

