

# KAISER<sup>®</sup>

EWD 2-54

## SERIES 112

.00005" /  $\varnothing$  Setting Accuracy



A PRODUCT OF:

# BIG KAISER<sup>®</sup>

PRECISION TOOLING INC.

Higher Performance. Guaranteed.

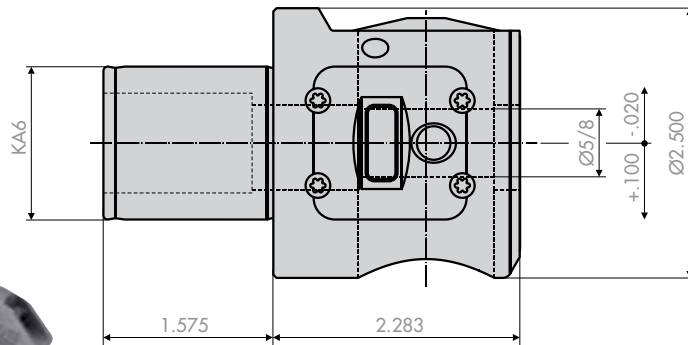
# EWD 2-54, DIGITAL PRECISION BORING HEAD

## HIGHEST PRECISION AND PERFORMANCE

- Setting accuracy  $.00005''/\varnothing$  (metric heads and components available upon request)
- Max. spindle speed 20,000 RPM

The precision boring head EWD 2-54 features absolute setting accuracy which is shown on a built-in digital display. The boring head with KA6 connection features an electronic measurement system on the tool carrier which provides ultra precise diameter adjustments for the boring range of  $\varnothing.078''-2.126''$ .

With one single button for the functions "on" and "reset", operating errors are practically eliminated.

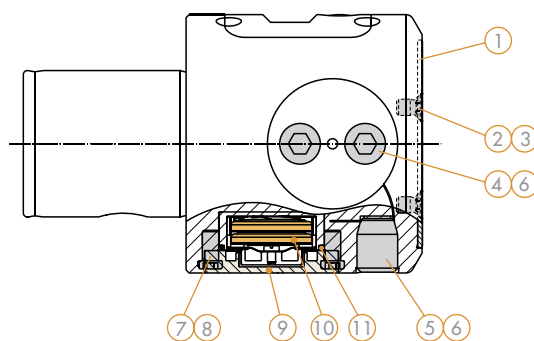


### DIGITAL BORING HEAD

CATALOG NUMBER
10.112.119

### FEATURES:

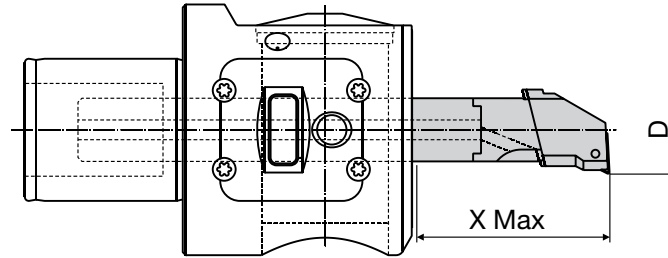
- Diameter corrections are shown on large and high contrast LCD display with a resolution of  $.00005''/\varnothing$
- The measuring system for the tool carrier shows the effective movement of the cutting edge and permits diameter corrections in both directions
- Power management for optimized battery life
- Automatic switch off function which automatically stores the last displayed value
- Same accessories as for the precision boring head EWN 2-50XL
- Variable length adjustment of the tool holders ensures optimized tool lengths in the diameter range from  $\varnothing.078''-2.126''$
- Coated tool body for a complete protection against corrosion
- Fine balancing with a screw-fit balancing ring
- Max speed: 20,000 RPM
- Radial adjustment range:  $-.020/+ .100$
- Through tool coolant supply up to 580 PSI



### SPARE PARTS

1	2	3	4	T (ft-lbs.)	5	T (ft-lbs.)
10.195.081	10.690.981	10.694.815	10.690.457	7	10.690.469	7
6	7	T (ft-lbs.)	8	9	10	11
10.690.816	10.690.320	3	10.690.843	10.195.090	10.718.201	10.692.296

ACCESSORIES Ø.078"-2.126"

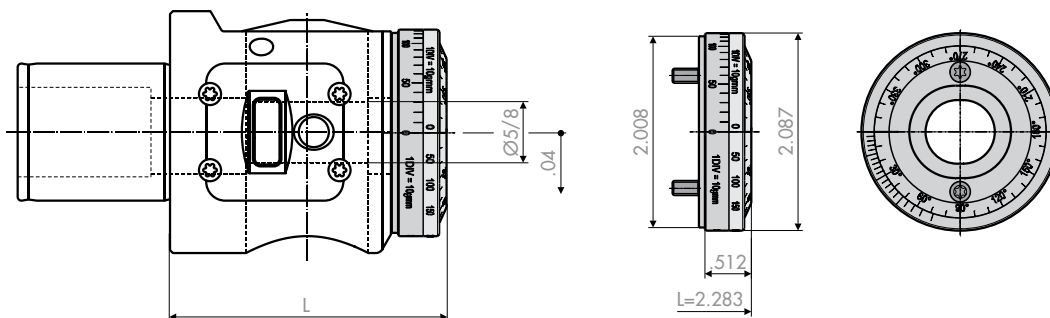


## INSERT HOLDERS

REDUCTION BUSHINGS		REDUCTION SLEEVES		TOOL HOLDERS			INSERT HOLDERS		BORING RANGE D	
CATALOG NUMBER	ØD - Ød	CATALOG NUMBER	ØD - Ød	CATALOG NUMBER	Ød	X max.	CATALOG NUMBER	INSERT	BALANCEABLE	MAX
10.613.524	5/8" - 4mm	10.613.504	5/8" - 4mm	10.611.155	4mm	0.354	-	-	.079 - .118	0.276
				10.611.156		0.551	-	-	.118 - .157	0.315
10.613.522	5/8" - 3.5mm	-	-	10.615.203	3.5mm	1.575	-	-	.154 - .193	0.354
10.613.523	5/8" - 4.5mm	-	-	10.615.204	4.5mm	1.969	-	-	.193 - .232	0.394
10.613.525	5/8" - 5mm	10.613.505	5/8" - 5mm	10.615.201	5mm	2.362	-	WC..02	.228 - .287	0.433
10.613.526	5/8" - 6mm	10.613.506	5/8" - 6mm	10.615.202	6mm	2.559	-	WC..02	.287 - .346	0.472
10.613.527	5/8" - 7mm	10.613.507	5/8" - 7mm	10.615.207	7mm	1.969	-	TP..07	.307 - .386	0.512
				10.615.205		3.346				
10.613.529	5/8" - 9mm	10.613.509	5/8" - 9mm	10.615.374	9mm	2.756	10.615.365	TP..07	.386 - .472	0.669
				10.615.369		3.937				
-	-	10.613.511	5/8" - 11mm	10.615.376	11mm	3.543	10.615.366	TP..07	.465 - .551	0.748
				10.615.371		4.724				
-	-	10.613.513	5/8" - 13mm	10.615.378	13mm	2.756	10.615.367	TP..07	.543 - .669	0.866
				10.615.373		3.937				
-	-	-	-	10.615.254	5/8"	3.937	10.615.301	TC..11	.661 - .866	1.063
				10.615.255		6.299	10.615.302		.858 - 1.063	1.26
							10.615.303		1.055 - 1.299	1.496
-	-	-	-	10.615.259	5/8"	4.331	10.615.304	TC..11	1.252 - 1.575	1.772
				10.615.250		6.299	10.615.305		1.567 - 2.126	2.323

## BALANCING RING

After removing the front cover plate, the balancing ring can be mounted on to the boring head. The imbalance has to be measured on a balancing machine. The correction of the imbalance is done by moving the scale rings.



CATALOG NUMBER  
10.112.806

Correction of imbalance max. = 200 [gmm], 1 DIV = 10 [gmm]

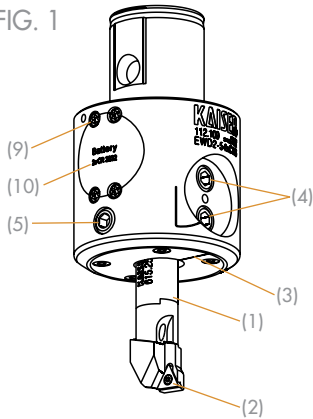
# EWD 2-54, DIGITAL PRECISION BORING HEAD

## OPERATING INSTRUCTIONS

### Important:

The digital display always shows the dimensional change to the previously set value or to "0". The absolute value can not be shown. Make dimensional corrections only with digital display switched on and with the tool holder assembled to the boring head.

FIG. 1

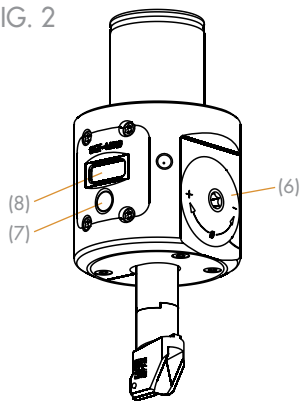


### Preparation and presetting of the boring tool

Put the appropriate tool holder (1) into the boring head and set it to the desired projection length. Align cutting edge (2) to the line marking (3) on the front cover of the boring head. Tighten clamp screws (4).

Unlock the tool carrier by loosening the clamp screw (5). Adjust the desired diameter on a presetter by the adjustment disk (6). Lock the tool carrier with clamp screw (5).

FIG. 2

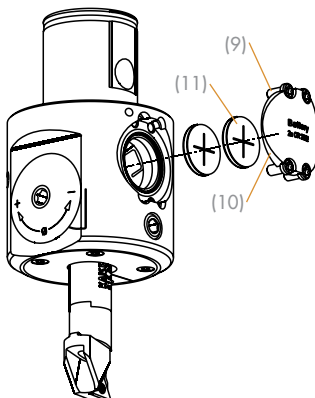


### Carry out dimensional corrections

Loosen clamp screw (5) to unlock tool carrier. Switch on digital display by pressing button (7). The display (8) shows the previously stored value. Press button (7) again to reset the value to "0".

Correct the dimension (difference between actual and nominal diameter) by turning the adjustment disk (6). Lock tool carrier with screw (5).

FIG. 3



### Battery change

In case of low battery "Accu" is flashing on the display. Press button (7) to acknowledge receipt of the message. Continue with your work, but make sure that the batteries will be changed promptly.

Open battery cover (10) by loosening screws (9). Remove old batteries and dispose them correctly. Put in new batteries (11) with the positive pole (+) up and close battery cover (10). Fasten screws (9).

**BIG KAISER**<sup>®</sup>  
**PRECISION TOOLING INC.**

2600 Huntington Blvd., Hoffman Estates, IL 60192  
Tel: 847.228.7660 • Fax: 847.228.0881  
web: [www.bigkaiser.com](http://www.bigkaiser.com) • e-mail: [bigkaiser@bigkaiser.com](mailto:bigkaiser@bigkaiser.com)