

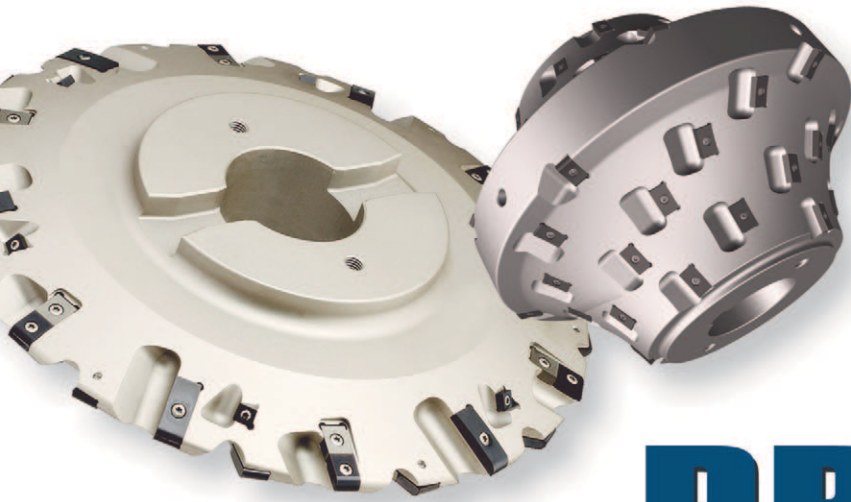
A large, stylized image of a wind turbine's nacelle and blades against a blue sky, serving as the background for the top section of the page.

Member IMC Group
Ingersoll
Cutting Tools

GEAR PRODUCT

A large, detailed close-up of several interlocking metal gears, rendered in a blue color scheme, filling the lower two-thirds of the page.

HIGHLIGHTS



Finish Gashing

- Extra long, close tolerance involute form inserts cover the entire flank, eliminating mismatch
- Full effective root/half effective flank insert takes advantage of chip thinning to reduce cost & increase productivity

PROCESS



HOBGING

GASHING

**Double Thread Hob
Cuts Cycle Time in Half!**

NEW!



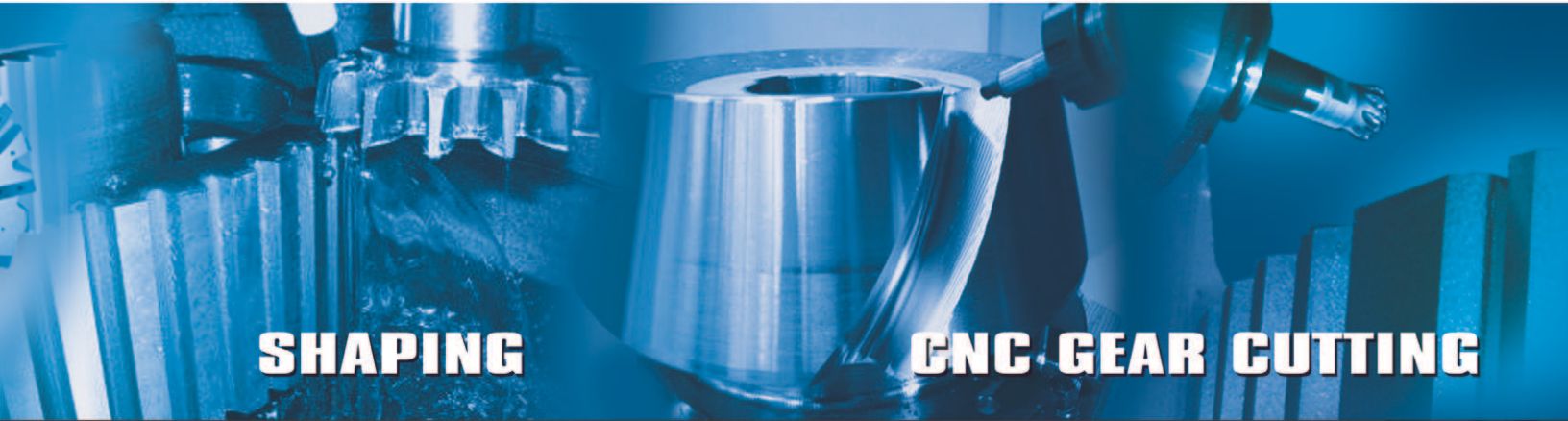
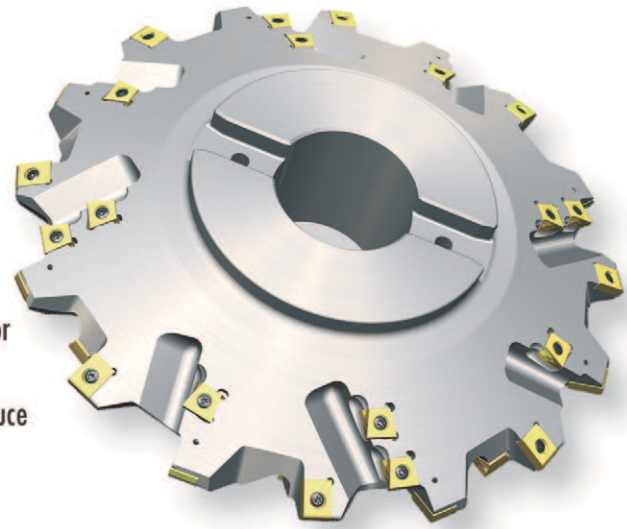
Rough & Finishing Hobs

- Higher cutting speed & axial feed means less machining time & more productivity
- Simple set-up & no regrinding necessary
- Inserts with up to four cutting edges



Rough Gashing

- Combined negative & double-positive geometry
- Negative root inserts provide stability for heavy chip removal at high feed rates
- Double-positive S-Max flank inserts reduce axial force



SHAPING

CNC GEAR CUTTING

CAPABILITIES

Shaper

- Roughing at 3-4 times faster than HSS
- Higher speeds & feeds increase productivity
- Insert technology providing 2 cutting edges per insert



CNC Tools

- Ingersoll standard indexable tooling
- Ideal for low volume gear production
- Special form ground tips available



Ingersoll Cutting Tools for the Americas

Marketing & Technology Center
845 South Lyford Road
Rockford, IL 61108-2749 U.S.A.

Tel: 815/387-6600
Fax: 815/387-6968
E-mail: info@ingersoll-imc.com
Internet: www.ingersoll-imc.com

Ingersoll Cutting Tools Canada
845 South Lyford Road
Rockford, IL 61108-2749 U.S.A.

Tel: 800/892-6859
Fax: 815/227-6010

Ingersoll Cutting Tools de México S.A. de C.V.
Blvd. Cuauhtemoc, Num 2411, Locales 6 y 7
Esquina Calle Manuel Perez Treviño
Fracc. Residencial los Pinos
Saltillo, Coahuila C.P. 25198, México
Tel: (844) 485-3208, (844) 485-3220

Ingersoll Cutting Tools for Europe

Marketing & Technology Center
Ingersoll Werkzeuge GmbH
Kalteiche-Ring 21-25
35708 Haiger, Germany

Tel: 02773-742 0
Fax: 02773-742 812/814
E-mail: info@ingersoll-imc.de
Internet: www.ingersoll-imc.de

Member IMC Group
Ingersoll
Cutting Tools