



As a Full Line Supplier of Round Cutting Tools,
Morse Cutting Tools is continually adding new tools
to serve the evolving needs of the Machining Industry.
Your One Stop for High Performance and Production Cutting Tools.

Miniature Carbide Drills • High Performance Carbide Drills
Tool Holders • High Speed Spindles
High Performance End Mills for Aluminum

AHB
TOOLING & MACHINERY, INC.

**COMPLETE
METALWORKING
SOLUTIONS**

(800) 991-4225
www.ahbinc.com
ISO Certified
customerservice@ahbinc.com





YOUR ONE STOP for CUTTING TOOLS

Morse HIGH PERFORMANCE TOOLS

Optimal Tool Performance and Long Tool Life in Production Applications

Morse PRODUCTION TOOLS

Consistent Performance in Machining & Production Applications

Marxman MAINTENANCE TOOLS

Maintenance & MRO Applications

See our COMPLETE SELECTION

at www.morsecuttingtools.com





Miniature Carbide Drills

General Purpose & High Performance



**Production Drilling
in a Wide Range
of Materials.**



General Purpose

Uncoated

Size s 0.10mm (.0039") thru 1/8"
1/8" Shank Diameter
1-1/2" Overall Length

**High Performance
Drilling in a
Wide Range
of Materials.**



High Performance

Uncoated & ALTiN Coated

Size s 0.10mm (.0039") thru 1/8"
1/8" & 3.0mm Shank Diameters
1-1/2" Overall Length



High Performance Carbide Drills



Aluminum & Non-Ferrous Materials

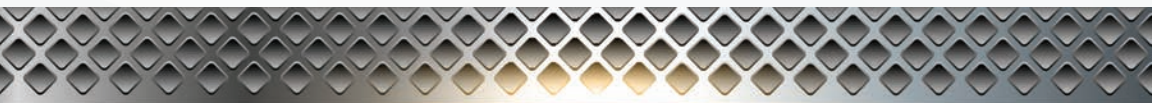
Non-Coolant Through • 3xD & 5xD • Zirconium Carbo-Nitride Coated
Size s 1/16" thru 16mm

Aluminum & Non-Ferrous Materials

Coolant Through • 3xD, 5xD & 12xD • Zirconium Carbo-Nitride Coated
Size s 3mm thru 20mm

Aluminum & Cast Materials

Non-Coolant Through • 3xD & 5xD • Zirconium Carbo-Nitride Coated
Size s 1/16" thru 16mm



SHEAR **MORSE** M DRILL



MADE IN THE
USA

Aluminum & Cast Materials

Coolant Through • 3xD & 5xD • Zirconium Carbo-Nitride Coated
Size s 3mm thru 20mm

Stainless Steels, Heat Resistant Alloys & Cast Materials

Coolant Through • 16xD & 20xD • Titanium Aluminum Carbo-Nitride Coated
Size s 3mm thru 20mm

Steels & Cast Materials

Coolant Through • 8xD & 12xD • Titanium Aluminum Carbo-Nitride Coated
Size s 3mm thru 20mm

Nickel-Based Alloys

Coolant Through • 3xD & 5xD • Aluminum Titanium Nitride Coated
Size s 3mm thru 20mm

Steels, Gray Cast Iron & Hardened Materials

Coolant Through • 3xD & 5xD • Aluminum Titanium Nitride Coated
Size s 3mm thru 20mm

Pilot Drill - Prepare Hole for Deep Hole Drilling

Coolant Through • 5xD • Titanium Aluminum Carbo-Nitride Coated
Size s 3mm thru 20mm



Spherical Ball End Mills

Micrograin Carbide – Center Cutting

nACo – Aluminum Titanium Nitride + Silicon Nitride Coated

220°, 270° & 300° Cutting Arc

2-Flute & 4-Flute



2-Flute Size s 1/32" thru 1/2"



4-Flute Size s 1/16" thru 1/2"

**Designed for Multi-Axis Machining,
Undercutting, Deburring and many other
operations in Pre-Hardened Steels up to
45Rc Hardness.**



High Performance Carbide End Mills



Engineered for High Speed High Performance Milling in Aluminum.



2-Flute - Extended Neck - 35° Helix

Uncoated & DLC Coated Square End & Ball Nose Size s 3/8" thru 1"

Spindle Speeds up to 30,000 RPM.

Maximum Productivity.



3-Flute - Extended Neck - 37° Helix

Uncoated & DLC Coated Square End & Ball Nose Size s 3/8" thru 1"

For use in High Speed Machining Centers with Shrink Fit Tooling only.

V-Flange Tool Holders

CAT40 and CAT50

ER Collet Chucks

ER11 - ER16 - ER20 - ER25 - ER32 - ER40
CAT40 and CAT50 Shanks
Full Range of Projections



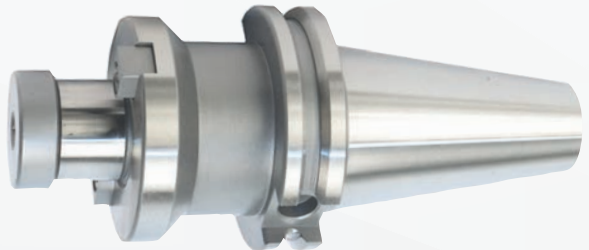
End Mill Holders

Sizes 1/8" thru 2"
CAT40 and CAT50 Shanks
Full Range of Projections



Shell Mill Holders

Sizes 1/2" thru 1-1/2" Pilot Dia.
CAT40 and CAT50 Shanks
Full Range of Projections





Coolant Driven High Speed Spindles

- Produce high RPM for small diameter tools on limited RPM machines.
 - Easy installation and removal.
 - Powered by the machine's existing coolant supply.
 - Increased productivity, surface finish & accuracy.

STREAM POWER - Type 1000

Machine Requirements:

Coolant Pressure at Main Spindle Outlet:
Min. 290 PSI / Max 580 PSI.

RPM Range: 35,000 - 55,000 RPM

Onboard Wireless RPM Transmitter.

Remote RPM Display Unit also available.

**Integral Shank Options: ST20, C5, C6,
BT30, BT40, ER32, CAT40, HSK-A63**



STREAM POWER - High Pressure - Type 2000

Machine Requirements:

Coolant Pressure at Main Spindle Outlet:
Min. 580 PSI / Max 1020 PSI.

RPM Range: 25,000 - 45,000 RPM

Onboard Wireless RPM Transmitter.

Remote RPM Display Unit also available.

**Integral Shank Options: ST20, C6,
BT40, ER32, CAT40, HSK-A63-R**





The "NEW" Morse



31695 Stephenson Hwy.
Madison Heights, Michigan 48071

Phone: 800.255.1701
Fax: 800.338.4857
morsecuttingtools.com

customerservices@morsecuttingtools.com

