

NPA 51

VARDEX

Since 1960
vargus60
NEUMO Ehrenberg Group

VARDEX NPA 51 INCH | 12/2020 | Page 1/3

INCH

AVAILABLE NOW

NEW

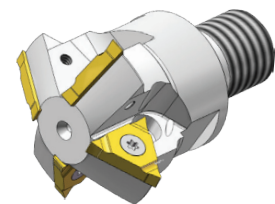
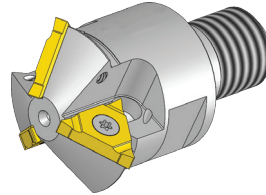
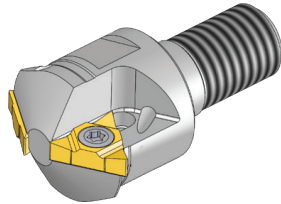
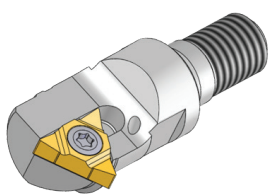
TMSD

Modular Toolholder Heads



Features and Benefits:

- One modular toolholder head fits an assortment of shank lengths
- Compatible with the most common steel and carbide shanks in the market
- Tools include high pressure coolant thru for extended tool life
- Multi-flute tools for fast machining
- Suitable for TMSD U Style inserts
- Specially suited for deep holes
- Reduced load on cutting edges due to single point insert design



The NEW **TMSD Modular Toolholder Heads** are included in the **VARGUS GENIUS™**, the most advanced Tool Selector and CNC Program Generator in the metal cutting tools industry.



Ami Yacar
Vardex Product Manager

AHB

TOOLING & MACHINERY

COMPLETE METALWORKING SOLUTIONS

(800) 991-4225

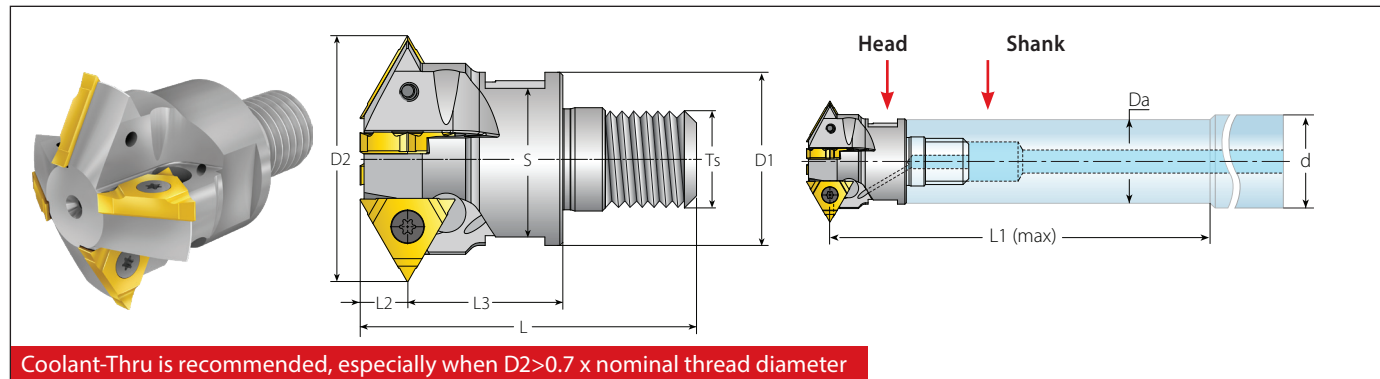
www.ahbinc.com

ISO Certified

customerservice@ahbinc.com



TMSD Modular Toolholder Heads



Coolant-Thru is recommended, especially when D2>0.7 x nominal thread diameter

TMSD Modular Toolholder Heads for U Style Inserts

Insert Size	Ordering Code	EDP	Dimensions inch							No. of Flutes	Spare Parts			
			D1 (mm)	D2	L	L1 (max) for Steel Shank	L1 (max) for Carbide Shank	L2	L3		Ts	S (mm)	Z	Insert Screw
1/4"U	TM1SC-D15-M06-2U	67139	10.6	.58	1.30	1.89	2.26	.21	.59	M06	9.0	1	SN2T	HK2T
	TM1SC-D17-M08-2U	67149	13.0	.66	1.46	2.36	2.84			M08	11.0	1		
	TM2SC-D21-M08-2U	67150	14.1	.81	1.34	2.84	3.39			M08	12.0	2		
	TM2SC-D23-M10-2U	67151	18.0	.89	1.50	3.39	4.06			M10	16.0	2		
	TM3SC-D26-M12-2U	67152	21.0	1.05	1.89	4.13	4.92			M12	18.0	3		
3/8"U	TM4SC-D31-M12-2U	67153	25.0	1.22	2.01	4.53	5.43	.32	.91	M12	22.0	4	SA3T	HK3T
	TM3SC-D36-M16-3U	67154	29.0	1.44	2.17	4.92	5.91			M16	25.0	3		
	TM4SC-D42-M16-3U	67155	29.0	1.65	2.17	5.67	6.77			M16	25.0	4		

TMSD Modular Head (U Style) Applications

Thread Applications for Partial Profile Inserts

Toolholder	Min. Thread Dia.								
	D2 (Inch)	Da/d (mm)	ISO Coarse	ISO Fine	UNC	UN/UNF/UNEF/UNS	BSP (G)	Partial 55°	Trapez
TM1SC-D15-M06-2U	.58	10.0/10.0	M18x2.5; M24x3.0	M16x0.5; M16x0.75; M16x1.0; M17x1.25; M17x1.5; M17x2.0	3/4-10; 7/8-9; 1-8	5/8-32UN; 5/8-28UN; 5/8-27UNS; 11/16-24UN; 11/16-20UN; 11/16-16UN; 3/4-14UNS; 3/4-12UN	3/8-19; 1/2-14; 1-11	11/16-14; 3/4-12; 7/8-11; 3/4-10; 7/8-9; 1-8; 1 1/8-7	TR22x3; TR24x3
TM1SC-D17-M08-2U	.66	15.5/16	-	M18x0.5; M18x0.75; M18x1.0	-	3/4-32UN; 3/4-28UN; 7/8-27UN;	-	-	-
TM2SC-D21-M08-2U	.81	15.5/16	M24x3.0; M30x3.5; M36x4.0	M22x0.5; M22x0.75; M22x1.0; M23x1.25; M23x1.5; M23x2.0	1-8; 1 1/8-7; 1 3/8-6	7/8-32UN; 7/8-28UN; 7/8-27UNS; 7/8-24UNS; 7/8-20UNEF; 1-18UNS; 1 1/8-16UN; 1-14UNS; 1 1/16-12UN; 1-10UNS	3/4-14; 1-11	1-26; 1-20; 1-16; 1-12; 1-10; 1 1/8-9; 1-8; 1 1/8-7	(TR26-TR60)x3; TR28x4; (TR60-TR110)x4;
TM2SC-D23-M10-2U	.89	19.5/20.0	-	M24x0.5; M24x0.75; M25x1.0; M25x1.25; M26x1.5; M26x2.0; M27x2.5	-	1-32UN; 1-28UN; 1-27UNS; 1-24UNS; 1-20UNEF; 1-18UNS; 1-16UN; 1-14UNS; 1-12UNF; 1 1/8-10UNS;	3/4-14; 1-11	1-26; 1-20; 1-16; 1 1/16-12	-
TM3SC-D26-M12-2U	1.05	24.0/25.0	-	M28x0.5; M28x0.75; M28x1.0; M28x1.25; M29x1.5; M29x2.0	-	1 1/8-28UN; 1 1/8-24UNS; 1 1/8-20UN; 1 1/8-18UNEF; 1 1/8-16UN; 1 1/4-14UNS; 1 3/16-12UN;	7/8-14	1 1/8-26; 1 1/8-20; 1 3/8-16	-
TM4SC-D31-M12-2U	1.22	24.0/25.0	M36x4.0	M32x0.5; M32x0.75; M33x1.0; M33x1.25; M34x2.0; M34x2.5; M35x3.0; M36x3.5	1 1/2-6	1 1/16-28UN; 1 3/8-24UNS; 1 1/16-20UN; 1 1/16-18UNEF; 1 1/16-16UN; 1 3/8-14UNS; 1 3/8-12UNF; 1 3/8-10UNS; 1 3/8-8UN	1 1/8-11	1 3/8-26; 1 3/8-20; 1 3/8-16; 1 3/8-12; 1 7/16-8	-
TM3SC-D36-M16-3U	1.44	29.0/32.0	M42x4.5; M48x5.0; M56x5.5	M39x1.5; M39x2.0; M40x2.5; M41x3.0; M42x3.5; M42x4.0	1 3/4-5; 2-4.5	1 9/16-16UN; 1 5/8-14UNS; 1 9/16-12UN; 1 5/8-10UNS; 1 5/8-8UN; 1 5/8-6UN	1 1/4-11	1 5/8-16; 1 5/8-12; 1 5/8-8; 1 5/8-6	-
TM4SC-D42-M16-3U	1.65	29.0/32.0	M48x5.0; M56x5.5; M64x6.0	M45x1.5; M45x2.0; M46x2.5; M48x3.0; M48x3.5; M48x4.0	2-4.5; 2 1/2-4	1 3/4-16UN; 1 3/4-14UNS; 1 3/4-12UN; 1 13/16-8UN; 1 13/16-6UN	1 1/2-11	1 7/8-16; 1 7/8-12; 1 7/8-8; 2 1/4-6; 2-4.5	-

TMSD Modular Head (U Style) Applications

Thread Application for Full Profile Inserts (ISO, UN, NPT & API Round)

Toolholder	Toolholder Cutting Diameter D2 (Inch)		Pitch		Min. Thread Dia.		Cylindrical or Conical Pre-Drilled hole	Cylindrical Pre-Drilled hole	API Round, Cylindrical or Conical Pre-Drilled Hole (for cylindrical 2 radial passes 50%/50%; for conical one radial pass)	API Round, Conical Pre-Drilled Hole only (one pass)
	* Adjusted D2	Da/d (mm)	mm	TPI	ISO Fine	UN/UNF/ UNEF/UNS	NPT Threading by 1 Radial Pass	** NPT Threading by 2 Radial Passes (50%/50%)	Thread Dia.	
TM1SC-D15-M06-2U	.54	10.0/10.0	1.5	-	M16x1.5	-	-	-	-	-
	.54		2.0	-	M16x2.0	-	-	-	-	-
	.54		-	14	-	5/8-14UNS	-	-	-	-
	.54		-	12	-	1 1/16-12UN	-	-	-	-
	.57		-	14	-	-	-	1/2-14NPT; 3/4-14NPT	-	-
TM2SC-D21-M08-2U	.78	15.5/16	1.5	-	M22x1.5	-	-	-	-	-
	.77		2.0	-	M22x2.0	-	-	-	-	-
	.77		-	14	-	7/8-14UNF	-	-	-	-
	.77		-	12	-	7/8-12UN	-	-	-	-
	.81		-	14	-	-	-	3/4-14NPT	-	-
TM2SC-D23-M10-2U	.85	19.5/20.0	1.5	-	M24x1.5	-	-	-	-	-
	1.18		1.5	-	M33x1.5	-	-	-	-	
TM4SC-D31-M12-2U	1.18	24.0/25.0	2.0	-	M34x2.0	-	-	-	-	-
	1.18		-	14	-	1 3/8-14UNS	-	-	-	-
	1.18		-	12	-	1 5/16-12UN	-	-	-	-
	1.21		-	11.5	-	-	-	1 1/4-11.5NPT; 1 1/2-11.5NPT; 2-11.5NPT	-	-
	1.16		-	10	-	-	-	-	1.66...3.5x10APIRD (for TBG; UP TBG; UP TBG Long; Integral-Joint TBG)	-
TM3SC-D36-M16-3U	1.40	29.0/32.0	-	11.5	-	-	1 1/4-11.5NPT; 1 1/2-11.5NPT; 2-11.5NPT	-	-	-
	1.40		-	8	-	-	-	2 1/2..10-8NPT	-	-
	1.37		-	8	-	-	-	-	2.375...13.375x8APIRD (for CSG; TBG; UP TBG; UP TBG Long); 4.5...5.5x8APIRD (for LCSG)	8.625...20x8APIRD (for LCSG)
TM4SC-D42-M16-3U	1.62	29.0/32.0	-	11.5	-	-	1 1/2-11.5NPT; 2-11.5NPT	-	-	-
	1.62		-	8	-	-	-	2 1/2..10-8NPT	-	-
	1.58		-	8	-	-	-	-	2.875...20x8APIRD (for CSG; TGB; UP TBG; UP TBG Long); 4.5...7.625x8APIRD (for LCSG)	8.625x8APIRD (for LCSG)

* Correct the toolholder cutting diameter D2 according to adjustment, as indicated in the above table.

** When the pre-drilled hole for 8NPT is conical, the thread can be machined in one pass.