



MODEL 558/559

OPERATING INSTRUCTIONS AND PARTS MANUAL

Read instructions carefully before attempting to assemble, install, operate or service this pressure washer. Failure to comply with instructions could result in personal injury and/or property damage!

**NOTE: THIS MANUAL IS INTENDED FOR USE WITH
THE FOLLOWING MODEL RELEASE ONLY: 558-A AND 559-A**

SPECIFICATIONS

- Pump Volume At Pump Head: 2.2 GPM/132 GPH
- Pump Pressure At Pump Head: 1300 PSI
- Burner Type: Model 558 - LP Gas Fired, 245,000 BTU
Model 559 - Natural Gas Fired, 240,000 BTU
- Machine Voltage: 115VAC/60Hz/1Ph
- Total Machine Amperage: 18 Amps
- Machine Weight: 275 Lbs.
- Shipping Weight: 310 Lbs.
- Exhaust Stack Size: 10"
- Machine Dimensions: Length = 28.5" , Width = 20" , Height = 31"

SERIAL NUMBER:

**THE HOTSY CORPORATION
21 INVERNESS WAY EAST
ENGLEWOOD, CO 80112
(303) 792-5200**

DATE PURCHASED:

FOR SALES AND SERVICE, PLEASE CONTACT:

IMPORTANT SAFETY INSTRUCTIONS

Read and observe to prevent severe personal injury or property damage.

WARNING - When using this product basic precautions should always be followed, including the following:

- Read all instructions before using this product.
- Know how to stop the product and bleed all pressures quickly. Be thoroughly familiar with the controls.
- To reduce the risk of injury, close supervision is necessary when this product is used near children.
- Do not operate this product when fatigued or under the influence of alcohol or drugs.
- **STAY ALERT** - watch what you are doing.
- Keep operating area clear of all persons.
- If equipped with a GFCI, test the GFCI using the reset and test procedures provided on the GFCI device. The GFCI must be tested with every use.
- Follow the maintenance instructions specified in the manual.

WARNING - RISK OF EXPLOSION

- Do not spray flammable liquids or operate machine in areas where flammable vapors are present. Operate only where open flame or torch is permitted.

WARNING - RISK OF ELECTROCUTION OR INJURY

- Disconnect power supply before performing any maintenance. Failure to do so could result in severe shock or unexpected machine operation causing bodily injury.
- Make sure all switches and controls are in the OFF position prior to connecting electrical supply.
- Do not stand in water while connecting and disconnecting electrical supply.
- Keep all electrical components and connections dry and off ground.

WARNING - RISK OF INJECTION OR SEVERE INJURY

- Keep clear of nozzle. Do not direct discharge stream at persons. This machine is to be used only by qualified operators.

AVERTISSEMENT: RISQUE D'INJECTION ET DE BLESSURES GRAVES. SE TENIR À L'ÉCART DU JET. NE PAS DIRIGER LE JET DE SORTIE VERS D'AUTRES PERSONNES. CONFIER L'UTILISATION DE CE MATÉRIEL À UN OPÉRATEUR QUALIFIÉ.

- Use with eye, ear, hand, foot and skin protection at all times.
- Before changing or adjusting nozzle, engage manual trigger gun lock.

CAUTION - RISK OF INJURY

- To reduce the **RISK OF INJURY**, read **Operating Instructions** carefully before using.
- Trigger gun kicks back, hold with both hands.
- Do not overreach or stand on unstable support. Keep good footing and balance at all times.
- To prevent personal injuries due to falls, the use of auxiliary safety equipment may be required.
- Hot discharge fluid. **DO NOT** touch or direct spray at persons.
- Hot surfaces - Use only designed gripping areas of lance (wand or trigger gun) and avoid contact with non-insulated areas of machine to prevent the possibility of severe burns.
- Check hoses, fittings, wand, trigger gun and fuel connections daily for signs of wear, cracks and looseness, and replace as required.
- Do not block or tie trigger gun in the open position.
- Cleaning area should be provided with adequate drainage.
- Do not allow machine to run unattended.

CAUTION - RISK OF ASPHYXIATION

- Do not run machine indoors or in an enclosed area without the required venting, as exhaust fumes may be hazardous to your health.

CAUTION

- The pilot on this machine lights automatically. Never attempt to light the pilot or burner manually.
- Before operating this machine, smell around the area for gas. Be sure to smell next to the floor because some gases are heavier than air and will settle to the floor. If you smell gas, follow the procedure below:

1. Do not try to operate this machine or any other appliance.
2. Do not operate any electrical switches, and do not use the phone in your building.
3. Immediately call your gas supplier from a phone off the premises. Follow the gas supplier's instructions.
4. If you cannot reach your gas supplier, call the fire department.

AVANT DE METTRE EN MARCHÉ CETTE MACHINE, VÉRIFIEZ QU'IL N'Y A PAS DE FUITE DE GAZ À PROXIMITÉ. SENTEZ AU NIVEAU DU SOL PARCE QUE CERTAINS GAZ SONT PLUS LOURDS ET STAGNENT AU SOL. SI VOUS SENTEZ LE GAZ, SUIVEZ LES INSTRUCTIONS SUIVANTES:

1. NE PAS METTRE EN MARCHÉ CETTE MACHINE OU AUCUNE AUTRE MACHINE.
2. NE PAS ALLUMER LA LUMIÈRE OU UTILISER LE TÉLÉPHONE DANS VOTRE BÂTIMENT.
3. APPELER IMMÉDIATEMENT LE SERVICE DE GAZ DEPUIS UN TÉLÉPHONE HORS DE VOTRE BÂTIMENT. SUIVRE LES INSTRUCTIONS DONNÉES PAR VOTRE SERVICE DE GAZ.
4. SI VOUS NE POUVEZ PAS JOINDRE VOTRE SERVICE DE GAZ, APPELEZ LES POMPIERS.

- When applying detergents follow the safety rules on the detergent label.
- Use only approved detergent from a covered, D.O.T. approved, container.
- Troubleshoot machine before pressing any reset buttons. See **Troubleshooting Guide**.
- Failure to operate in accordance with operating manual may be dangerous and will void warranty.

IMPORTANT

- This machine is not to be connected to type B gas vent.
NE PAS RACCORDER CET APPAREIL À UN TUYAU D'ÉVACUATION DE GAZ DU TYPE B.
- A draft diverter shall be installed.
INSTALLER UNE HOTTE DE TIRAGE.
- This machine must be electrically grounded.
LA MACHINE DOIT ÊTRE MISE À LA TERRE.
- Connect this machine to an individual branch circuit only.
- If this machine is connected to a circuit protected by fuses, use time delay fuses.
- Consult manual and local building codes for installation requirements. Licensed contractor may be required.
- Contact an authorized service technician for repairs. Unauthorized machine modification or use of non-approved replacement parts may cause personal injury and/or property damage and will void the manufacturer warranty.
- This machine has been provided with Warning and Instruction decals for the safety of the operator. If these decals are removed or become damaged they should be replaced.

SAVE THESE INSTRUCTIONS

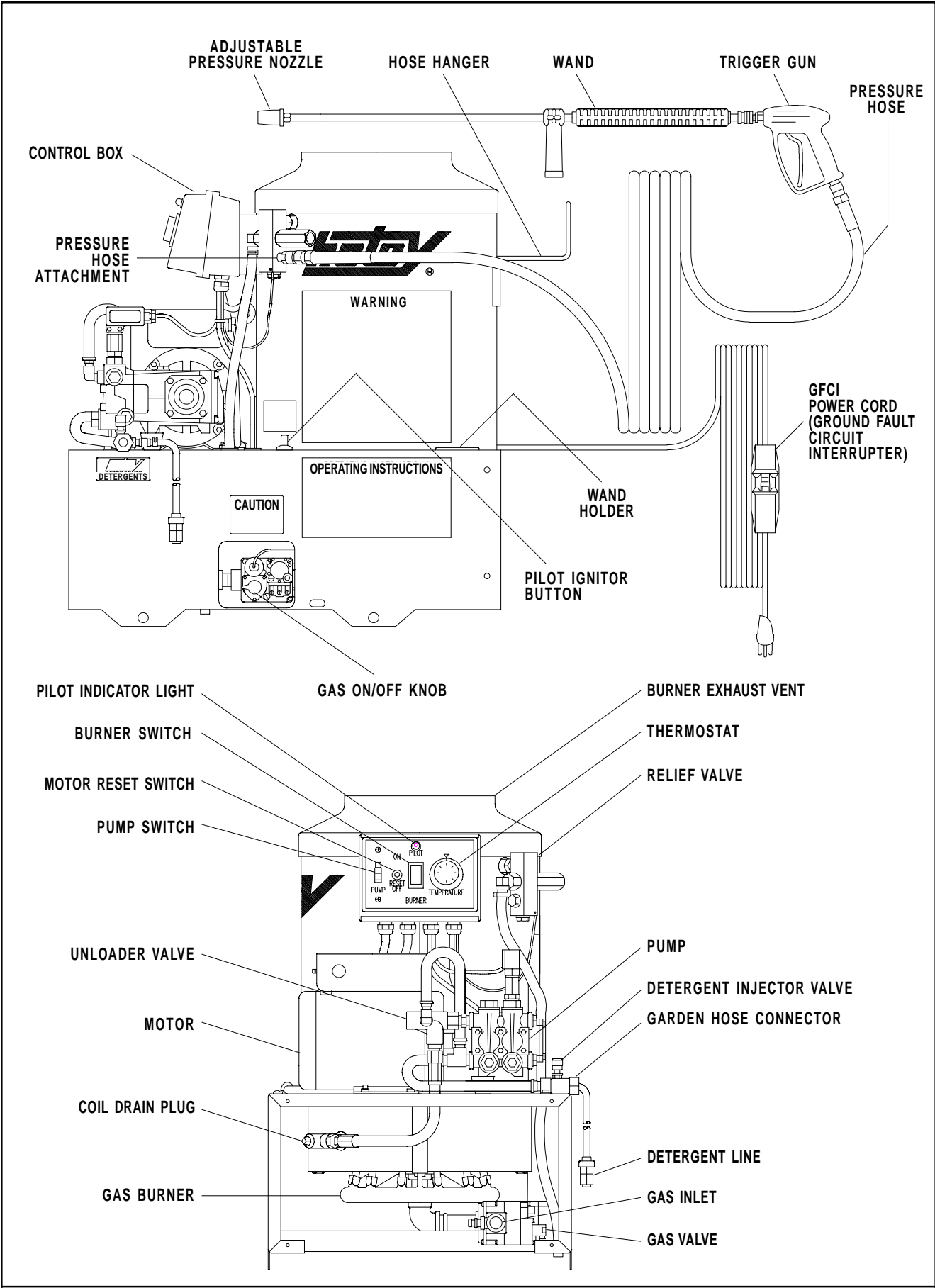


Figure 1 - Machine Component Layout

ASSEMBLY

Unpacking

Unpack carefully. Wear safety glasses or goggles while unpacking, assembling or operating pressure washer. If there are missing components or hidden damage immediately contact distributor or carrier concerning discrepancies.

1. Cut strapping band from pressure washer and pallet.
2. Remove pressure washer from pallet.

Parts Included

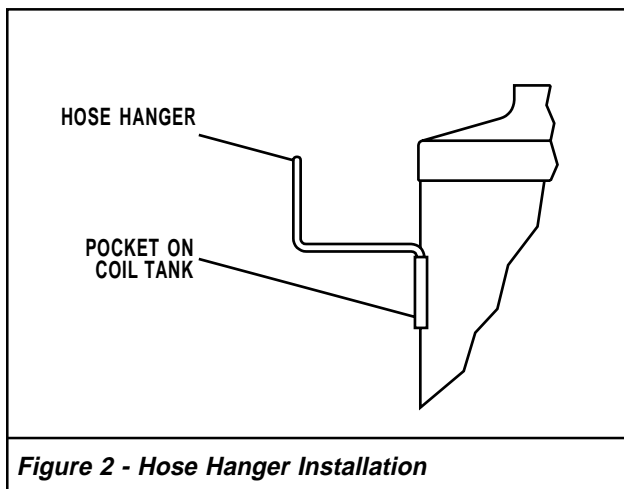
- Pressure Washer
- Pressure Hose
- Hose Hanger
- Wand
- Parts Bag Containing:
 - Adjustable Pressure Nozzle
 - Garden Hose Connector
 - Quick Disconnect
 - Trigger Gun
 - Garden Hose Connector Spring
 - Quick Disconnect Plug
- Operating Instructions and Parts Manual

Tools Required

- 10" Adjustable Crescent Wrench (2 ea.)
- 1/2" Allen Wrench
- Small Flat Head Screwdriver

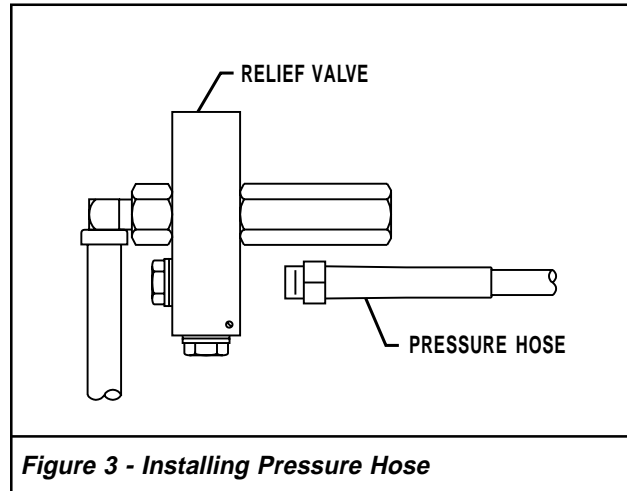
Hose Hanger

1. Install the hose hanger as shown in **Figure 2**.

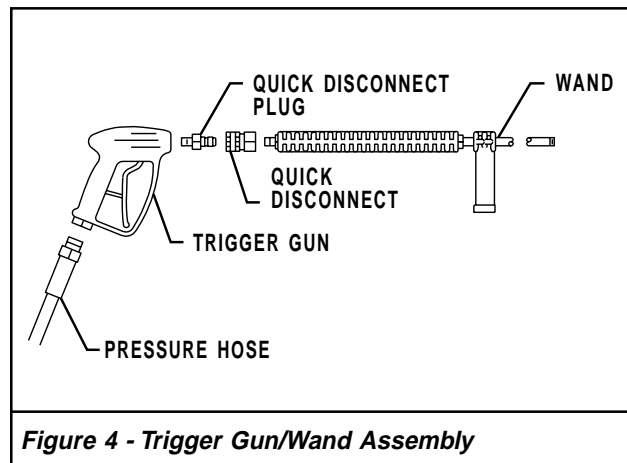


Pressure Hose, Trigger Gun and Wand

1. When assembling, use teflon tape on all plumbing connections to prevent leakage.
2. Install the pressure hose on the pressure washer as shown in **Figure 3**.



3. Assemble wand components as shown in **Figure 4**. Connect pressure hose to trigger gun.



NOTE: The pressure nozzle is not to be installed at this time.

4. Make sure that all plumbing connections are tight.

Garden Hose Connector

1. When assembling, use teflon tape on all plumbing connections to prevent leakage.
2. Locate the garden hose connector and garden hose connector spring from the parts bag.
3. Assemble the spring and connector to the detergent injector as shown in **Figure 11**.
4. Make sure that all plumbing connections are tight.

INSTALLATION

Getting Started

IMPORTANT: *Proper initial installation of equipment will assure more satisfactory performance, longer service life and lower maintenance cost.*

IMPORTANT: *The use of a backflow preventer on the water supply hose is recommended and may be required by local codes.*

The pressure washer should be run on a level surface where it is not readily influenced by outside sources such as strong winds, freezing temperatures, rain, etc. The pressure washer should be located to assure easy access for filling of fluids, adjustments and maintenance.

Normal precautions should be taken by the operator to prevent moisture from reaching the pressure washer. It is recommended that a partition be made between the wash area and the pressure washer to prevent direct spray from the wand coming in contact with the pressure washer. Moisture reaching the equipment will reduce the pressure washer's service life. All installations should comply with the local codes covering such installations.

Venting

WARNING - RISK OF EXPLOSION: *Do not spray flammable liquids or operate machine in areas where flammable vapors are present. Operate only where open flame or torch is permitted.*

CAUTION - RISK OF ASPHYXIATION: *Do not run machine indoors or in an enclosed area without the required venting, as exhaust fumes may be hazardous to your health.*

CAUTION: *Some gases are heavier than air and will spill out on the floor in the 2 to 3 minutes required for the safety pilot valve to close off gas supply. Therefore, always provide adequate space and ventilation around these units.*

CAUTION: *All venting must be in accordance with applicable federal and state laws, and local ordinances. Consult local heating contractors.*

IMPORTANT: *This machine is not to be connected to a type B gas vent. NE PAS RACCORDER CET APPAREIL À UN TUYAU D'ÉVACUATION DE GAZ DU TYPE B.*

IMPORTANT: *A draft diverter shall be installed. INSTALLER UNE HOTTE DE TIRAGE.*

If the pressure washer is to be used in an enclosed area, a flue must be installed to vent burner exhaust to the outside atmosphere. Exhaust gases should not be vented into a wall, a ceiling, or a concealed space of a building. Be sure the flue is the same size as the burner exhaust vent on the pressure washer. Poor draft will cause the pressure washer to soot and not operate properly. When selecting the location for installation, beware of poorly ventilated locations or areas where exhaust fans may cause an insufficient supply of oxygen. Proper combustion can only be obtained when there is a sufficient supply of oxygen available for the amount of fuel being burned. If it is necessary to install the machine in a poorly ventilated area, outside fresh air may have to be piped to the burner and a fan installed to bring sufficient air into the machine. Locate the pressure washer so that the flue will be as straight as possible and protrude through the roof at a proper height and location to provide adequate draft. This gas fired pressure washer must have a draft diverter installed in the flue (available from most heating contractors). A draft diverter will permit proper upward flow of exhaust flue gases.

Water Supply

Connect water supply hose to the garden hose connector. See **Figure 1** for location. The water faucet and supply hose must be capable of providing a minimum of 2.2 gallons per minute (GPM).

Fuel Supply

CAUTION: *Have a qualified gas serviceman install and service your equipment.*

WARNING: *Gas line supply pressure must not exceed 14" water column (.50 PSI).*

IMPORTANT: *Gas line must be provided with a shut off valve.*

IMPORTANT: *The gas supply must be able to supply a minimum of 245,000 BTU/HR at the machines rated manifold pressure.*

Consult building codes for installation requirements. For proper and safe machine operation, we recommend that a licensed contractor be consulted for machine installation.

LP Vapor Fuel

The model 558 has been factory built to use LP vapor fuel. **DO NOT USE LIQUID FUEL.**

Have a qualified gas serviceman install the LP vapor fuel supply line to the machine. See **Figure 5** for location of gas inlet.

Natural Gas Fuel

The model 559 has been factory built to use natural gas fuel.

Have a qualified gas serviceman install the natural gas fuel supply line to the machine. See **Figure 5** for location of gas inlet.

Gas Regulator

It is very important that the incoming gas pressure be between 12.0-14.0 Inches Water Column (.43-.50 PSI). If your fuel supply does not produce the correct pressure range contact your local Hotsy Service Representative.

The gas pressure coming out of the regulator and going to the burner ring has been factory set. You should not readjust the burner ring gas pressure. If you replace your gas valve, you will need to adjust the new valve. Refer to your machine's **specification plate** for the correct pressure setting. Follow the installation and adjustment instructions provided with your replacement valve.

Electrical

WARNING: Make sure all switches and controls are in the OFF position prior to connecting electrical supply.

WARNING: DO NOT stand in water while connecting and disconnecting electrical supply.

WARNING: Always disconnect power before servicing your pressure washer.

IMPORTANT: Consult local building codes for exact electrical requirements. Licensed contractors may be required.

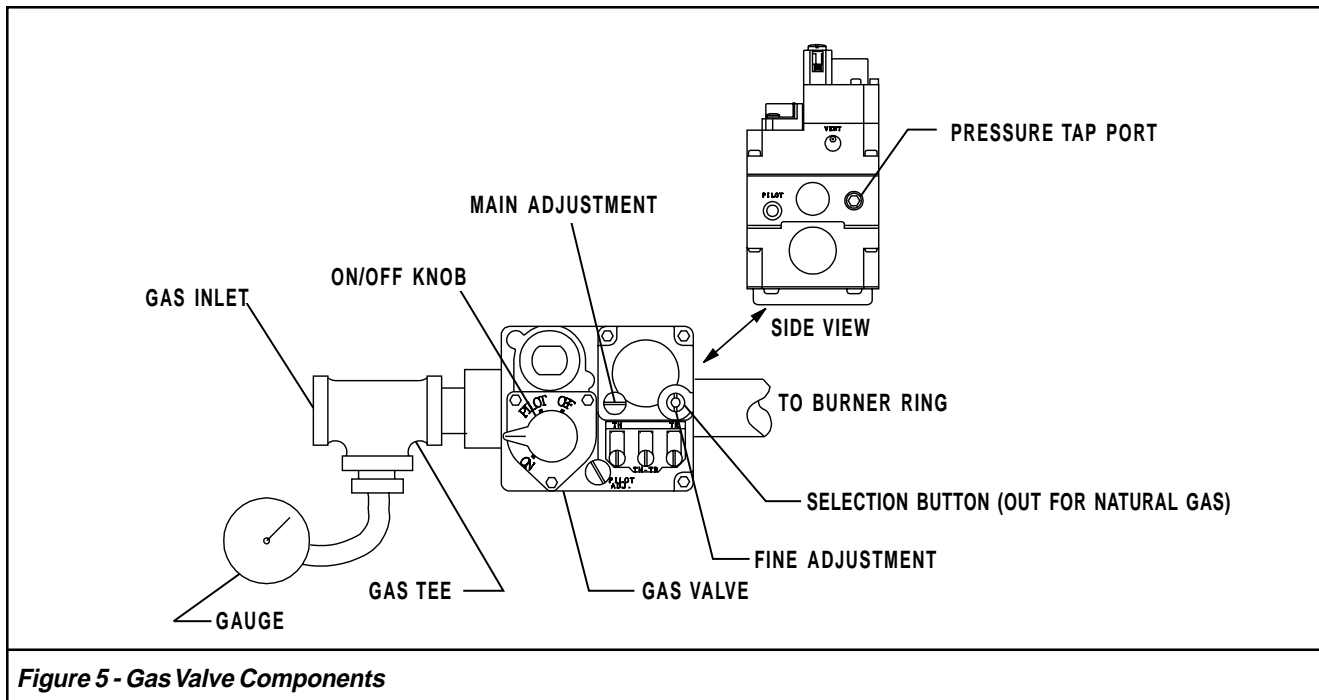
IMPORTANT: All wiring must be of proper voltage and amperage rating and conform to applicable codes.

IMPORTANT: This machine must be electrically grounded. LA MACHINE DOIT ÊTRE MISE À LA TERRE.

Grounding Instructions: Make sure all switches and controls are in the OFF position prior to connecting electrical supply. Do not stand in water while connecting and disconnecting electrical supply. If it should malfunction or break down, grounding provides a path of least resistance for electric current to reduce the risk of electric shock. The product must be connected to an appropriate power source that is properly installed and grounded in accordance with all local codes and ordinances.

DANGER: Improper connection of the equipment grounding conductor can result in a risk of electrocution. Check with a qualified electrician or service personnel if you are in doubt as to whether the outlet is properly grounded. DO NOT modify the plug provided with the product - if it will not fit the outlet, have a proper outlet installed by a qualified electrician. DO NOT use any type of adaptor with this product.

WARNING: To reduce the risk of electrocution, keep all connections dry and off the ground. DO NOT touch plug with wet hands.



OPERATION

Before Starting

1. Read all manuals provided with this pressure washer. Become familiar with location and function of all operating and safety controls.

Grounding Instructions: This product must be electrically grounded. If it would malfunction or break down, grounding provides a path of least resistance for electric current to reduce the risk of electric shock. This machine must be wired into an appropriate outlet that is properly installed and grounded in accordance with all local codes and ordinances.

DANGER: Improper wiring connections of the equipment can result in a risk of electrocution. Check with a qualified electrician or service personnel if you are in doubt as to whether the outlet is properly grounded.

WARNING: Make sure all switches and controls are in the OFF position prior to plugging in electrical cord.

WARNING: DO NOT stand in water while plugging or unplugging electrical cord.

CAUTION: This pressure washer is equipped with a UL approved ground fault circuit interrupter (GFCI) power cord. Use UL grounded type receptacles of proper voltage and amperage ratings. Where a properly grounded receptacle is not available, it is the personal responsibility of the owner to have one installed. Always disconnect power before servicing your pressure washer.

CAUTION: This machine is equipped with a 35 foot long power cord protected by a ground fault circuit interrupter (GFCI). DO NOT use extension cords due to possible severe electrical shock and/or damage to the machine.

2. Connect electrical cord to an overload protected 115VAC/60Hz/1Ph grounded circuit, minimum 18 ampere rated. Test the GFCI using the reset and test procedure located on the GFCI device. Do not use machine if GFCI fails test. The GFCI must be reset and tested with every use.

WARNING: Check hoses, fittings, wand, trigger gun and fuel connections daily for signs of wear, cracks and looseness, and replace as required.

3. Connect water supply hose to the garden hose connector, see **Figure 1** for location. The water faucet and supply hose must be capable of providing a minimum of 2.2 gallons per minute (GPM).
4. This machine was factory built for either LP vapor fuel or Natural Gas. See instructions under **Fuel Supply**.
5. Check pump oil level.
6. If detergents are to be used, only use detergents intended for pressure washers. Follow instructions on the detergent container.

IMPORTANT: Before installing pressure nozzle on initial start-up, turn on the water supply, start the pump

by pressing the pump ON switch, and hold the trigger gun trigger open until water appears at the end of the wand. Allow water to run from the end of the wand until clear to prevent the nozzle from clogging.

IMPORTANT: If the pressure washer has not been used for an extended period of time, remove the pressure nozzle from the end of the trigger gun and turn on water supply, and start the pump by pressing the pump ON switch. Hold the trigger gun trigger open and allow water to run from the end of the wand until clear.

7. Install the adjustable pressure nozzle on end of wand, refer to **Figure 6**.

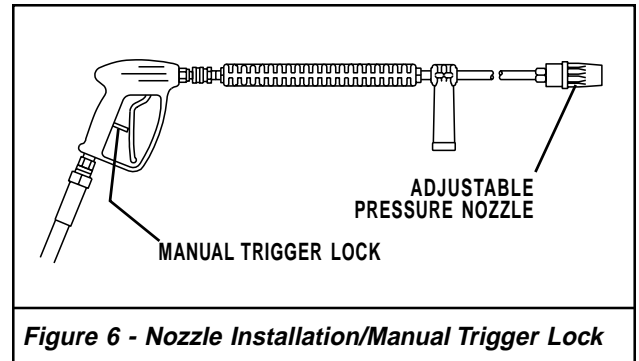


Figure 6 - Nozzle Installation/Manual Trigger Lock

NOTE: To prevent damage to the pressure nozzle, only place the wrench on hex area when tightening.

IMPORTANT: The trigger gun provided with this pressure washer is equipped with a manual trigger lock to prevent accidental operation of the trigger gun, refer to Figure 6. The trigger lock should be used whenever the trigger gun is not in use.

IMPORTANT: Pump may require priming the first time the pressure washer is run. See step 8.

8. If you are running the machine for the first time, or the machine has been sitting for a period of time, the pump may require priming. To prime the pump, run pressure washer with only the pump switch on.

IMPORTANT: On initial start-up or if maintenance has been performed on the burner assembly, it will be necessary to bleed the air from the gas line before the pilot will light.

9. If you are running the machine for the first time or have performed maintenance to the burner assembly, there will be air in the gas line. To bleed out the air from the gas line, run pressure washer with pump and burner switches ON and thermostat on highest setting. Squeeze the trigger of the trigger gun for 15 seconds. If the burner has not ignited, release the trigger for 5 seconds then squeeze for 15 seconds. If the burner has not ignited after 10 tries, see the **Troubleshooting Guide** in this manual.

CAUTION: Have a qualified gas serviceman install and service your equipment.

DANGER: Never expose a spark or flame where there may be unburned gas present.

DANGER: Some gases are heavier than air and will spill out on the floor in the 2 to 3 minutes required for the safety pilot valve to close off gas supply. Therefore, always provide adequate space and ventilation around these units.

To Start

WARNING: Risk of injection or severe injury - Keep clear of nozzle - DO NOT direct discharge stream at persons - This machine is to be used only by qualified operators.

AVERTISSEMENT: RISQUE D'INJECTION ET DE BLESSURES GRAVES. SE TENIR À L'ÉCART DU JET. NE PAS DIRIGER LE JET DE SORTIE VERS D'AUTRES PERSONNES. CONFIER L'UTILISATION DE CE MATÉRIEL À UN OPÉRATEUR QUALIFIÉ.

WARNING: Wear eye, ear, hand, foot, and skin protection at all times while operating pressure washer.

IMPORTANT: The water must be turned on before starting. Running the pump dry will cause damage and void warranty.

IMPORTANT: Do not allow the machine to run in bypass for more than 10 minutes at any one time or damage to pump may occur.

1. Connect electrical cord and test GFCI device.
2. Turn water on.

NOTE: The pilot indicator light on the control box will ONLY indicate the presence of the pilot while the machine is in operation. This light will be off when the machine is not running.

NOTE: The pilot may require repeated attempts to ignite following initial installation or replacement of the natural gas supply. The delay in ignition is due to trapped air in the gas supply/pilot line.

3. Open gas supply valve.
4. Turn the gas valve ON/OFF knob to pilot position.
5. Fully depress gas ON/OFF knob and hold in. Immediately push the ignitor button down and repeat until the pilot ignites. If the pilot fails to ignite within 30 seconds, release the gas control knob, depress slightly and turn to the OFF position. Wait 15 minutes and repeat steps 4 and 5.
6. Once pilot has ignited, continue to depress the gas control knob for an additional 60 seconds before releasing.
7. Turn gas control knob to the ON position.
8. Hold wand firmly, release trigger of trigger gun and turn pump switch ON. Squeeze trigger of trigger gun and allow air to purge from system.
9. If HOT water is desired, adjust the thermostat to the proper temperature and turn burner switch ON. Squeeze trigger of trigger gun. The pilot will automatically light, quickly followed by the firing of the burner

ring. When the trigger of the trigger gun is released or when the thermostat temperature setting is reached, the burner will automatically turn off.

IMPORTANT: If ignition or flame failure is experienced, discontinue use of pressure washer at once. Turn off burner and shut off fuel supply. Have cause of failure corrected by an authorized service technician before use of pressure washer is continued.

To Clean

WARNING: Risk of injection or severe injury - Keep clear of nozzle - DO NOT direct discharge stream at persons - This machine is to be used only by qualified operators.

AVERTISSEMENT: RISQUE D'INJECTION ET DE BLESSURES GRAVES. SE TENIR À L'ÉCART DU JET. NE PAS DIRIGER LE JET DE SORTIE VERS D'AUTRES PERSONNES. CONFIER L'UTILISATION DE CE MATÉRIEL À UN OPÉRATEUR QUALIFIÉ.

The detergent injector valve (**Figure 11**) operates by reducing the volume of water, thus a vacuum is achieved and detergent is drawn into the system. **DO NOT** reduce the water inlet flow so the pump cavitates due to water starvation. Operating a pump with insufficient water will damage the pump seals.

1. Insert detergent line and screen into container of detergent.
2. Completely open detergent control knob located on the side of the detergent injector valve.
3. Start the detergent suction by rotating the water adjustment knob of the detergent injector valve. Turning the knob counterclockwise will pull detergent into the system. The flow may be observed through the clear detergent line. Secure the knob position with the knurled nut.
4. The side control knob can now be adjusted to meter the desired amount of detergent.
5. Select the width of your nozzle spray pattern by turning the black knob on the nozzle. Pattern can be from 0° through 80° fan spray.
6. Wash from the bottom to the top, using side to side motions. This washes away heavy dirt and allows the detergent to soak as you work toward the top.
7. Do not wash at a 90° angle to the work (straight at it). This will allow water to splash back at you and reduces your cleaning power. Wash at a 30° to 60° angle to the work. This will allow the water to splash away from you and the water will wash the dirt away faster and easier.
8. Use the width of the spray pattern to wash in a wide path. Overlap spray paths for complete coverage. Wash from side to side, using slow, steady motions.
9. The nozzle should be 12" to 24" from work, closer for tough areas. Be careful on painted or delicate surfaces, the pressure may damage surface if nozzle is too close.

10. Small parts should be washed in a basket so the pressure does not push them away. Larger, light weight parts should be clamped down so the pressure does not push them away.
11. Turn the side detergent control knob clockwise (CW) for detergent decrease. Wait for detergent to clear. Always rinse with cold water after using detergent. Rinse from the top to the bottom to prevent detergent from dripping onto a rinsed area. For the best results, contact your Hotsy dealer to help you select the best detergent for your application.

To Stop

NOTE: If the machine is unplugged, the GFCI must be reset prior to use. Always test GFCI before each use.

1. If detergents were used, draw clean water through the detergent inlet line to purge detergent. Failure to do so may clog detergent injector valve.
2. If burner was used, turn OFF burner switch and allow pump to run cold water through coil for several minutes.
3. Turn OFF pump switch.
4. Turn OFF water supply.
5. Squeeze trigger gun open to relieve system pressure.
6. Depress gas control knob slightly and turn to OFF position.
7. Turn off main shut-off valve on gas supply.

STORAGE

DANGER: Do not store flammable liquids (gasoline, diesel fuel, petroleum, solvents, etc.) near pressure washer or in non-ventilated areas.

1. Protect from freezing by storing in a heated area, or by flushing the system with antifreeze (use an automotive engine antifreeze or windshield washer solvent to antifreeze). To flush the system with antifreeze, attach a short length of hose to the garden hose connector, see **Figure 1** for location. Place the other end of the hose into a container of antifreeze. Start machine and allow to run until antifreeze flows from the end of the wand. Squeeze and release the trigger gun several times to antifreeze the unloader system. Also draw antifreeze through the detergent inlet line to antifreeze the detergent system. For added protection after antifreezing, disconnect the pressure hose from machine and remove the coil drain plug (refer to **Figure 1** for location). After coil has drained, replace pressure hose and coil drain plug. If the pressure washer is not to be used for an extended length of time, it is recommended that the system be flushed with antifreeze for rust protection.

MAINTENANCE

WARNING: Unauthorized machine modification or use of non-approved replacement parts may cause personal injury and/or property damage and will void the manufacturer warranty.

Pump

Lubrication: To lubricate pump, use 30W non-detergent oil for pump crankcase. Crankcase must be filled to center of sight glass window found on the side of the pump, refer to **Figure 7**. During the break-in-period, make sure the oil is changed after the first 25 hours of operation. After that, replace oil every 3 months or 300 hours of operation, whichever comes first.

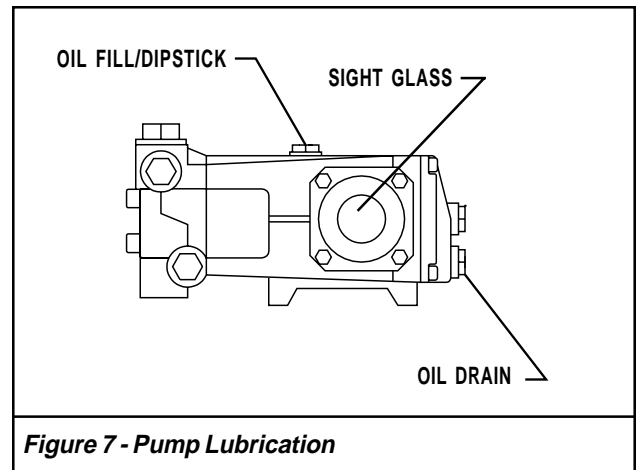


Figure 7 - Pump Lubrication

Proper Pump Care

- **DO NOT** pump acids.
- **DO NOT** allow pump to run dry.
- Winterize if storing in freezing temperatures, refer to **Storage** for details.
- Use a water softener on the water system if known to be high in mineral content.
- Use only high quality detergents and follow manufacturer's mix recommendations.
- Flush the system with clean water immediately after using detergent solutions.
- Clean filter screen on detergent inlet line periodically.
- Flush the pressure washer system with antifreeze if storing for an extended period of time, refer to **Storage** for details.

Pump Motor

On a yearly basis, oil pump motor per instructions on motor nameplate.

NOTE: *Some motors may be equipped with permanently lubricated bearings and will not require additional lubrication.*

Gas Burner

It is recommended that the gas burner be serviced yearly or as needed. Contact your local service center.

Relief Valve

WARNING: *The relief valve on this pressure washer has been factory set and sealed and is a field nonadjustable part. Tampering with the factory setting may cause personal injury and/or property damage, and will void the manufacturer warranty. For replacement parts refer to Figure 16.*

Unloader Valve

WARNING: *The unloader valve on this pressure washer has been factory set and sealed and is a field nonadjustable part. Tampering with the factory setting may cause personal injury and/or property damage, and will void the manufacturer warranty. For replacement parts refer to Figure 17.*

Heating Coil:

Coil Descaling: In hard water areas, scale buildup within the heating coil will occur. Scale deposits will decrease the water temperature rise and may eventually clog the heating coil. Contact your local service center when descaling is needed.

Coil Desooting: Poor grades of fuel or inadequate combustion air will cause heavy soot buildup on the outside surface of the heating coil. These deposits will insulate the coil. This will restrict the air flow through the coil, further aggravating the soot buildup. Contact your local service center when desooting is needed.

TROUBLESHOOTING GUIDE

SYMPTOM	POSSIBLE CAUSES	CORRECTIVE ACTION
Pump motor will not run.	GFCI tripped.	Reset and test GFCI with every use. See symptom " GFCI tripped " on page 12 Troubleshooting Guide .
	No voltage to machine.	Test power supply and correct.
	Pump motor reset button (thermal overload protector) tripped.	Push reset button on control box. If tripped check for proper voltage or clogged pressure nozzle.
	Excessive pressure due to clogged relief valve.	Clean relief valve seat.
No water sprays from pressure nozzle.	Pressure nozzle completely clogged.	Clean pressure nozzle.
	Inlet water screen clogged.	Check screen and clean if necessary.
	Pump sucking air.	Fill the detergent container and check for loose hose clamps or fittings.
Low pressure from pressure nozzle.	Inlet water screen clogged.	Check screen and clean if necessary.
	Pressure nozzle worn or incorrect size.	Replace nozzle with proper size.
	Water supply low.	Correct water supply.
	Pump sucking air.	Fill the detergent container and check for loose hose clamps or fittings.
Poor or no detergent flow.	Low detergent level.	Fill the detergent container.
	Detergent screen clogged.	Clean if necessary.
	Detergent injector valve not opening.	Check that handle or knob is not slipping on shaft.
	Pressure nozzle clogged.	Clean pressure nozzle.
	Excessive inlet pressure (more than 80 PSI).	Adjust detergent injector valve. See instructions under To Clean .
Pressure relief valve leaking.	Excessive pressure due to unloader valve over adjusted.	Call qualified serviceman to adjust or replace unloader valve.
	Defective relief valve.	Replace relief valve.
Burner will not ignite when trigger gun is open.	Defective pressure switch.	Replace pressure switch.
	No gas.	Check gas supply.
	No pilot.	Check that indicator light is on.
	Thermostat set too low or defective.	Raise thermostat setting. Replace if defective.
	Gas valve not open.	After pilot light is on, turn gas valve ON/OFF knob to ON position, then turn burner switch on.

TROUBLESHOOTING GUIDE

SYMPTOM	POSSIBLE CAUSES	CORRECTIVE ACTION
Burner will not ignite when trigger gun is open. <i>...continued</i>	Defective primary regulator.	Replace regulator.
	Defective gas valve.	Replace gas valve.
Burner smokes or has obnoxious odor.	Stack restriction.	See Venting under Installation .
Unloader cycles when gun is open or closed.	Air in system.	Open and close gun several times.
	Unloader out of adjustment or defective.	Call a qualified serviceman to adjust or replace unloader valve.
	Water leak between unloader valve and trigger gun.	Check fittings, hose and trigger gun for leaks. Repair or replace.
Pilot does not light.	Gas valve closed.	Set gas valve ON/OFF knob to pilot.
	Gas leak in pilot.	Call qualified serviceman.
Pilot ignites but will not stay on when ON/OFF knob is released.	Pilot too far away from thermocouple.	Adjust thermocouple closer to flame.
	Thermocouple loose at gas valve.	Tighten to firm fit.
Short thermocouple life.	Excessive heat from pilot flame.	Decrease pilot supply gas.
	Thermocouple too close to pilot.	Adjust thermocouple farther away.
GFCI tripped.	Device has not been reset.	Follow instructions on GFCI.
	Defective GFCI device.	Replace.
	Line to ground fault.	Contact qualified electrician to troubleshoot for ground fault.

IMPORTANT

If the pressure washer demonstrates other symptoms or the corrective actions listed do not correct the problem, contact the local authorized Hotsy Service Center. The Hotsy Service Center can be identified by contacting:

Customer Service Department
The Hotsy Corporation
21 Inverness Way East • Englewood, Colorado 80112
(303) 792-5200

When ordering from your dealer, please provide the following:

Model Number: _____ **Release:** _____

Machine Serial Number: _____

Component Part Number: _____

Description: _____

FOR HELP OR ADDITIONAL INFORMATION, CONTACT:

Customer Service Department

The Hotsy Corporation

21 Inverness Way East

Englewood, CO 80112

(303) 792-5200

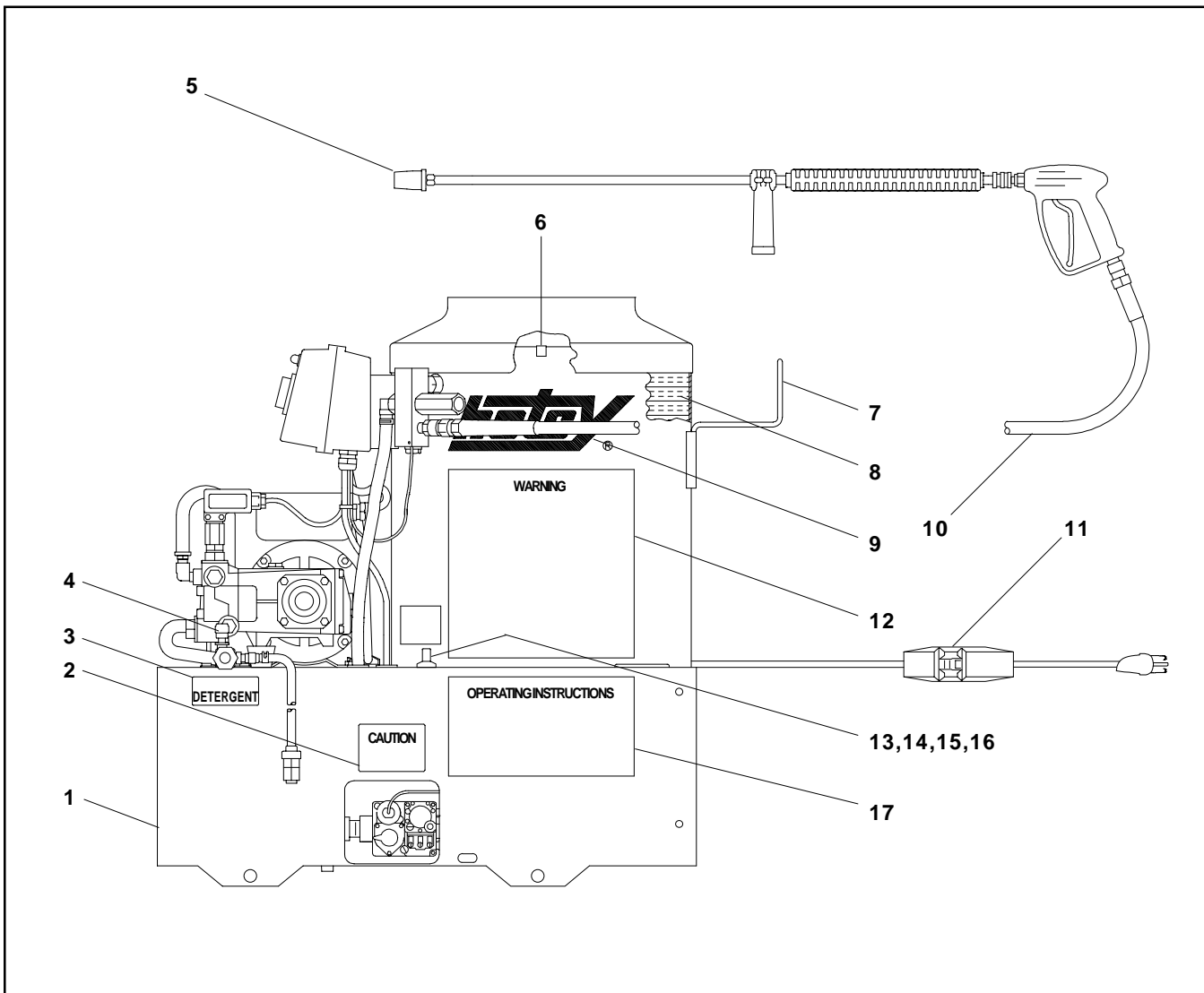


Figure 8 - Machine Assembly, Side View

Ref. No.	Part No.	Description	Qty.
1	375005	Chassis	1
2	232018	Decal Natural Gas Pressure (559)	1
	232019	Decal LP Gas Pressure (558)	1
3	834159	Decal Hotsy Detergent	1
4	Fig. 11	Water Inlet Assembly	1
5	Fig. 12	Trigger Gun/Wand Assembly	1
6	824115	Vent Clip	4
7	861644	Hose Hanger	1
8	873777	Coil Insulation	1

Ref. No.	Part No.	Description	Qty.
9	834385	Hotsy Logo	2
10	867207	Pressure Hose	1
11	825951	GFCI Power Cord	1
12	645922	Warnings Decal	1
13	691803	Pilot Ignitor Button	1
14	798914	Nut Ignitor Button	1
15	936603	End Ignitor Wire	1
16	936604	Side Ignitor Wire	1
17	645921	Instructions Decal	1

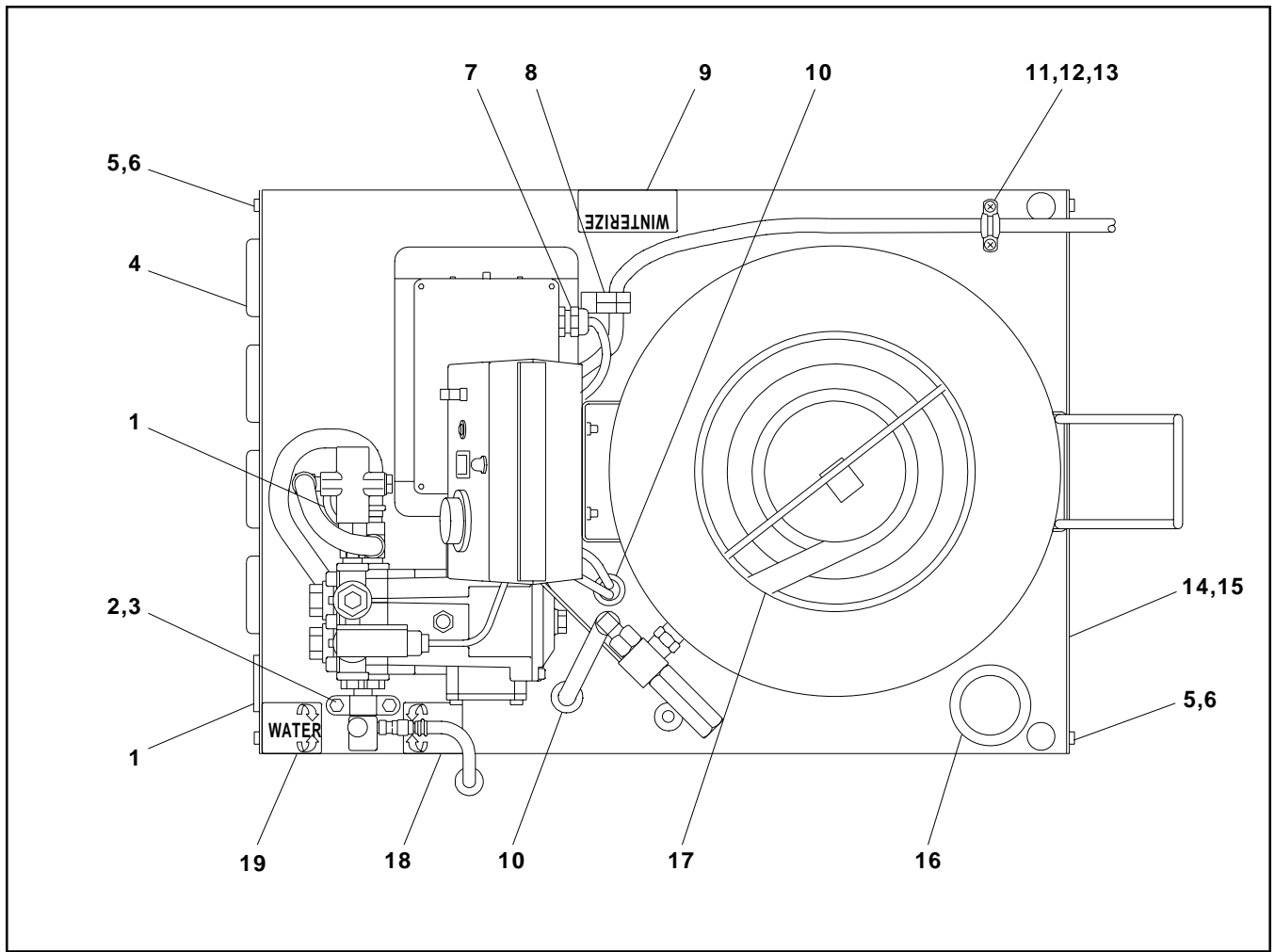


Figure 9 - Machine Assembly, Top View

Ref. No.	Part No.	Description	Qty.
1	815319	Snap Bushing	2
2	823932	Mounting Clip	1
3	■	Bolt 1/4" - 20 x 3/4"	2
4	333005	Front Chassis Panel	1
5	■	Screw 1/4" - 20 x 1"	8
6	■	Flat Washer 1/4"	8
7	826060	Strain Relief	1
8	824102	Retaining Clip	1
9	834154	Decal Winterize	1
10	815329	Snap Bushing	2

Ref. No.	Part No.	Description	Qty.
11	630609	Retaining Clip	1
12	■	Flange Nut #10 - 24	2
13	■	Screw #10 - 24 x 1/2"	2
14	375030	Rear Chassis Panel	1
15	722418	Insulation	1
16	859806	Grommet (Wand Holder)	1
17	241536	Coil	1
18	444438	Decal Detergent Metering	1
19	444437	Decal Water Metering	1

■ Standard hardware item available locally.

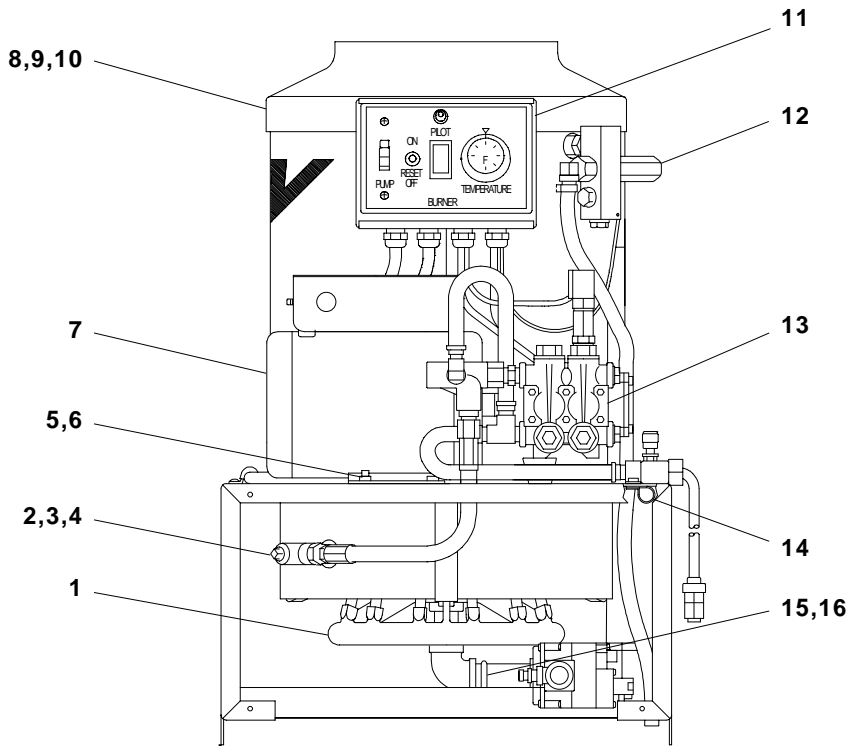


Figure 10 - Machine Assembly, Front View

Ref. No.	Part No.	Description	Qty.
1	Fig. 14	Burner Assembly	1
2	715744	Coil Drain Plug	1
3	754711	Tee 3/8"	1
4	801102	Hex Nipple 3/8" x 1-1/2"	1
5	■	Bolt 5/16" - 18 x 1"	4
6	■	Flange Nut 5/16" - 18	4
7	784304	Motor 2.0 HP	1
8	213045	Burner Exhaust Vent	1
9	722411	Vent Insulation	1

Ref. No.	Part No.	Description	Qty.
10	860107	Vent Insulation Retaining Ring	1
11	Fig. 15	Control Box Assembly	1
12	Fig. 16	Coil Outlet Assembly	1
13	Fig. 17	Pump Assembly	1
14	824106	Wire Clip	1
15	■	U-Bolt 1/4" - 20 x 1-1/4" x 2-1/4"	2
16	■	Locknut 1/4" - 20	4

■ Standard hardware item available locally.

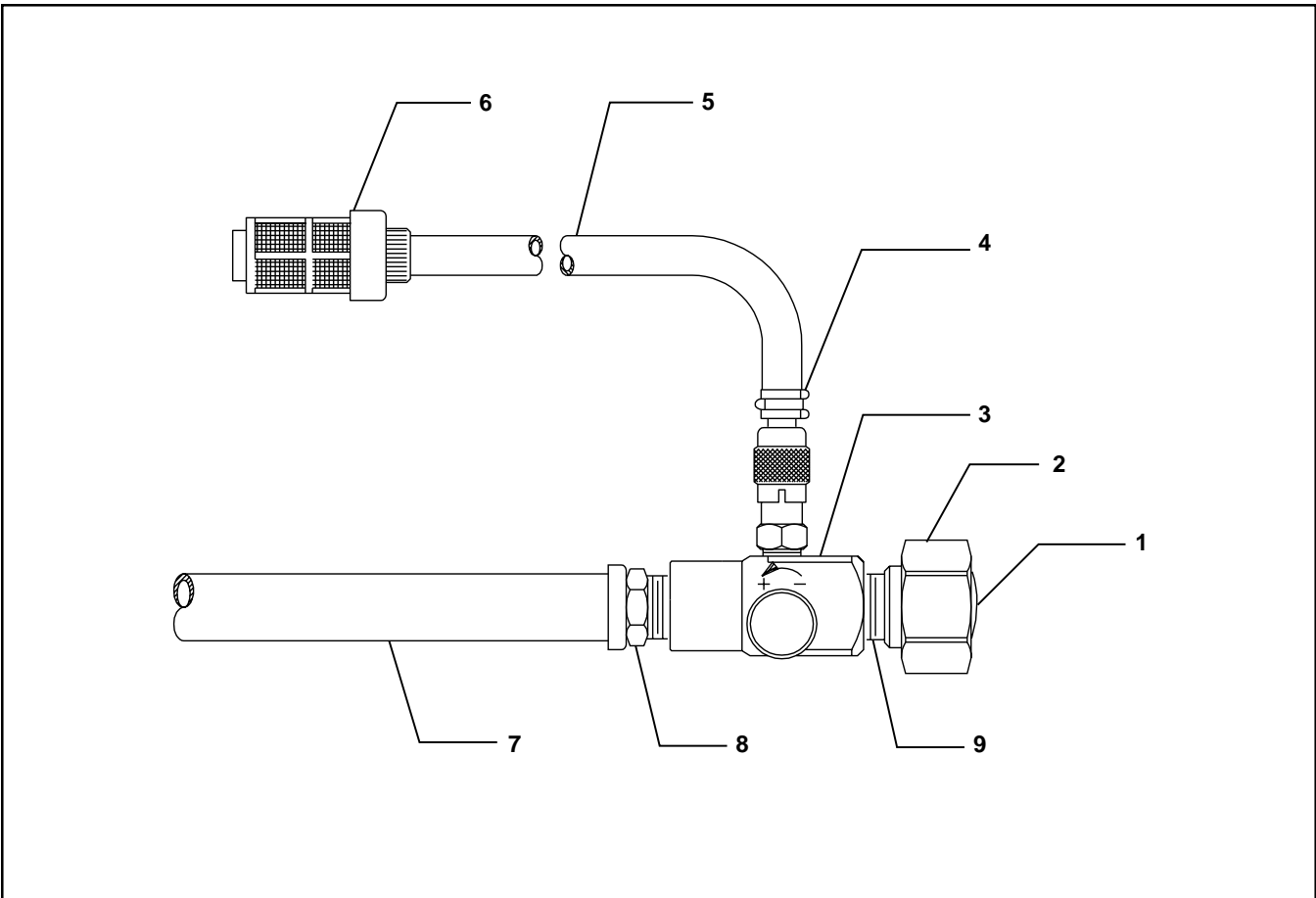


Figure 11 - Water Inlet Assembly

Ref. No.	Part No.	Description	Qty.
1	856035	Garden Hose Gasket/Screen	1
2	801126	Garden Hose Connector	1
3	⊕ 873596	Detergent Injector Valve	1
4	823989	Hose Clamp	1
5	961534	Tubing 1/4"	*
6	935159	Detergent Screen	1
7	867395	Hose 3/8"	*

Ref. No.	Part No.	Description	Qty.
8	898035	Nipple 3/8" x 3/8" Hose	1
9	875575	Garden Hose Connector Spring	1

* Order amount needed in feet.

Replacement Parts

⊕	753002	Detergent Injector Repair Kit
---	--------	-------------------------------

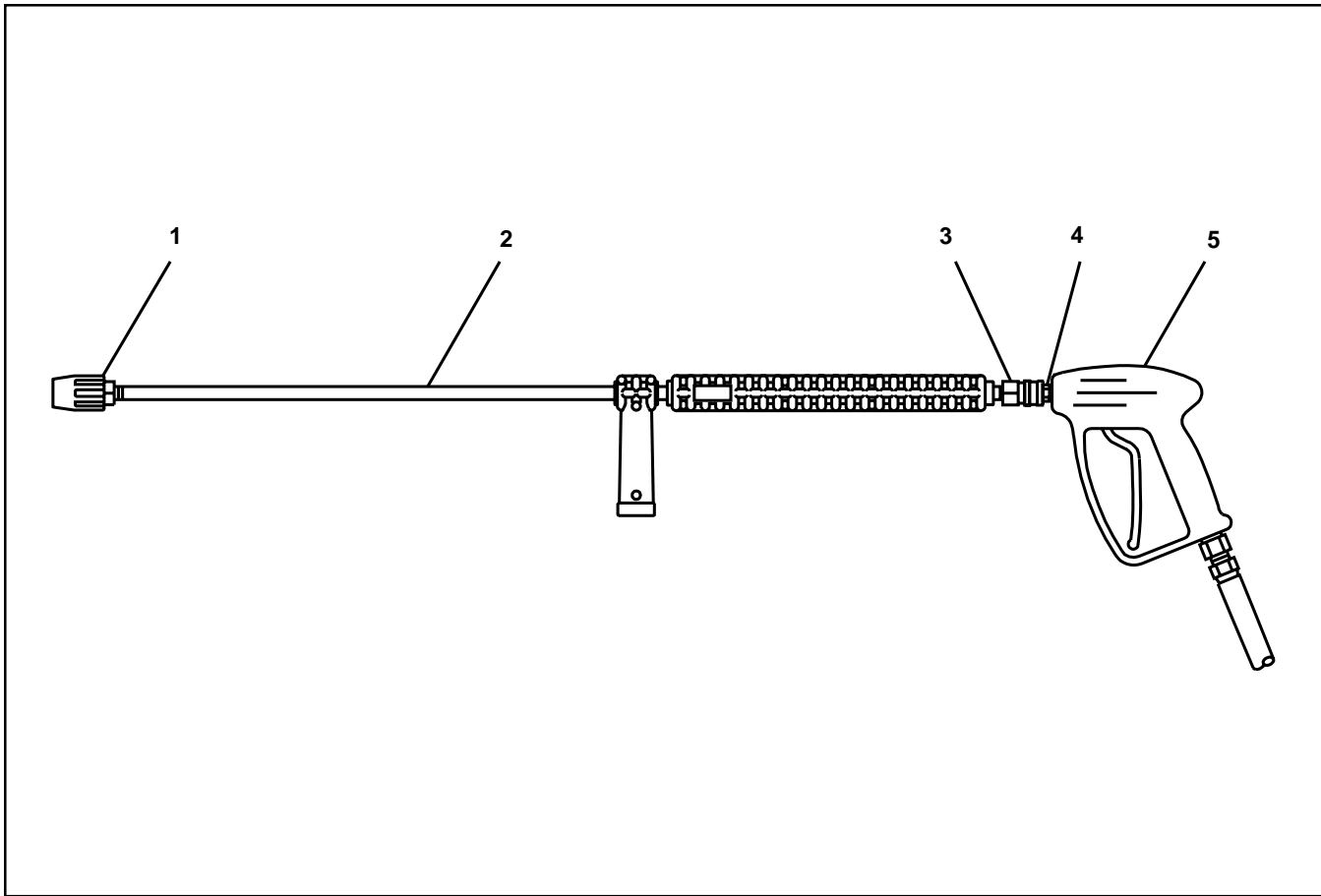


Figure 12 - Trigger Gun/Wand Assembly

Ref. No.	Part No.	Description	Qty.
1	799101	Adjustable Pressure Nozzle	1
2	⊕ 878917	Wand	1
3	826169	Quick Disconnect	1
4	915786	Quick Disconnect Plug	1

Ref. No.	Part No.	Description	Qty.
5	860447	Trigger Gun Fig. 13	1
Replacement Parts			
	⊕ 859762	Insulator Grip Assembly	1
	⊕ 859763	Side Handle Grip	1

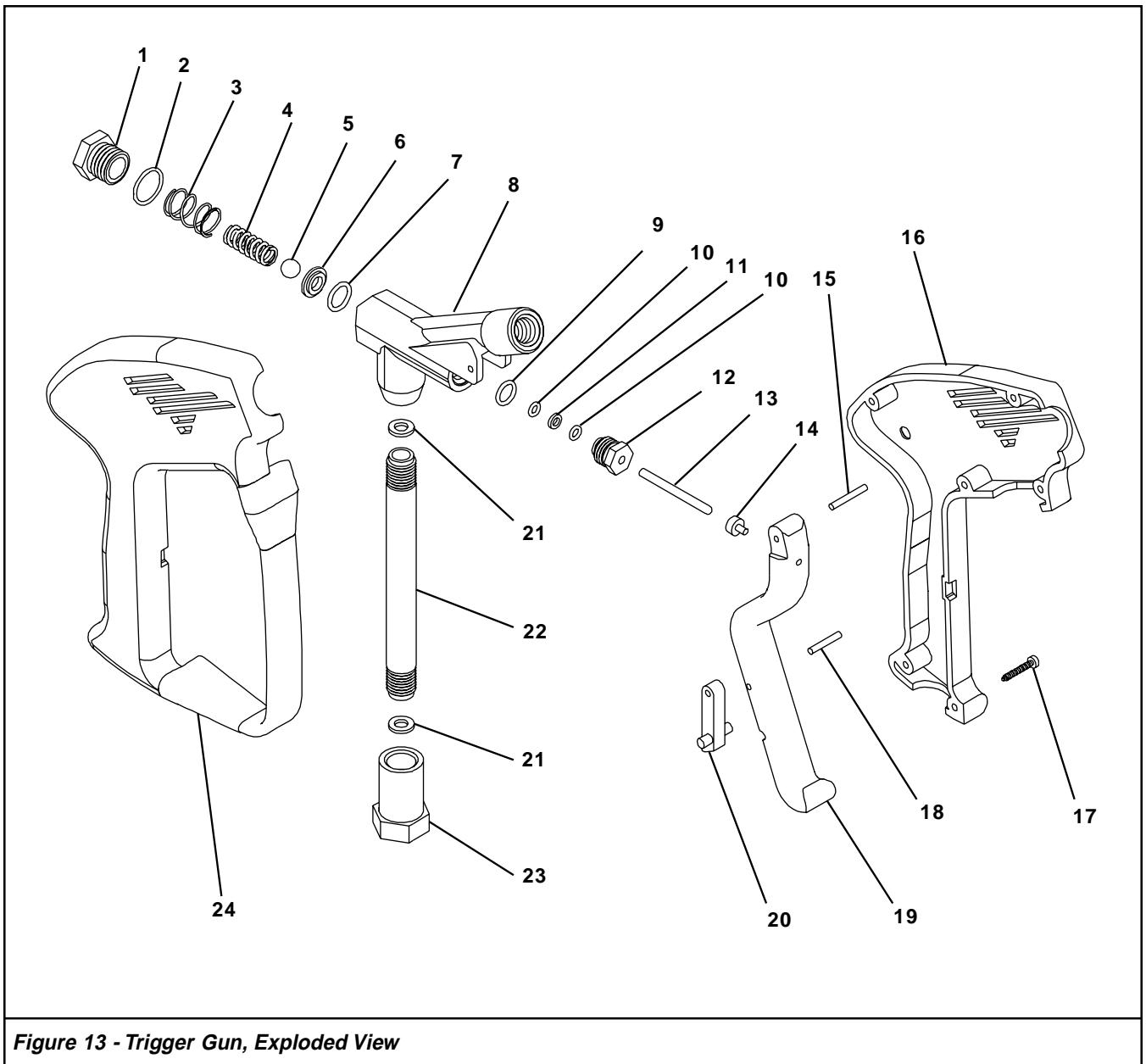


Figure 13 - Trigger Gun, Exploded View

Ref. No.	Part No.	Description	Qty.
1	817320	Valve Cap	1
2	★	Valve Cap O-Ring	1
3	★	Valve Seat Spring	1
4	★	Valve Spring	1
5	★	Ball	1
6	★	Valve Seat	1
7	★	Valve Seat O-Ring	1
8	812801	Valve Body	1
9	★	Plunger Guide Seat O-Ring	1
10	★	Plunger Guide Backring	2
11	★	Plunger Guide O-Ring	1
12	★	Plunger Guide	1
13	★	Plunger Rod	1

Ref. No.	Part No.	Description	Qty.
14	★	Plunger Seat	1
15	914141	Trigger Pin	1
16	860495	Left Gun Shell	1
17	735316	Phillips Screw	6
18	914142	Trigger Lock Pin	1
19	960271	Trigger	1
20	881941	Trigger Lock Lever	1
21	936460	Inlet Pipe Seat	2
22	914285	Inlet Pipe	1
23	851190	Inlet Fitting	1
24	860496	Right Gun Shell	1
Replacement Parts			
	★	877471	Trigger Gun Repair Kit

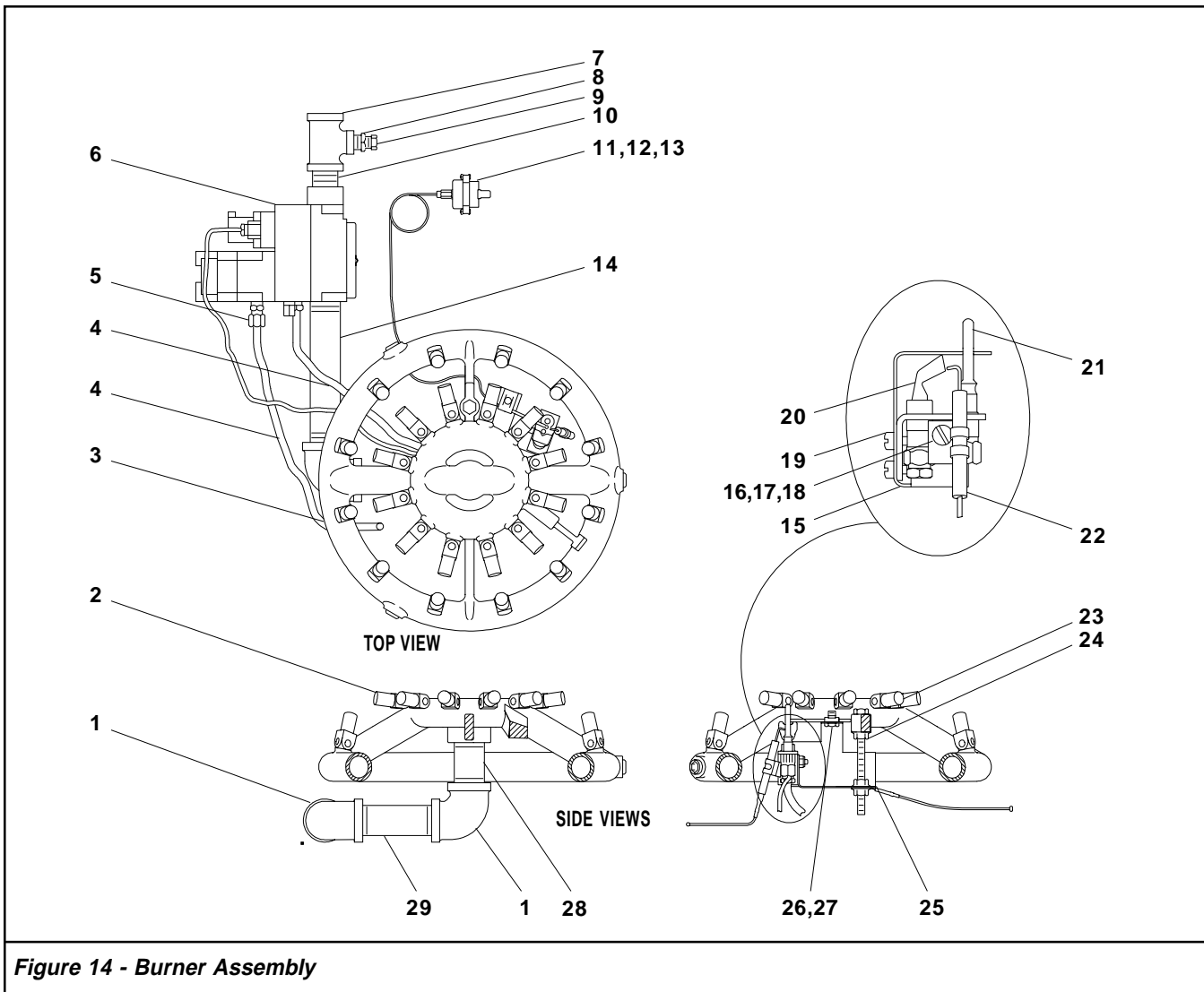


Figure 14 - Burner Assembly

Ref. No.	Part No.	Description	Qty.
1	844627	Elbow 3/4"	2
2	908267	Nozzle #53 Natural Gas (559)	24
	799051	Nozzle #64 LP Gas (558)	24
3	615645	Burner Ring w/Nozzles (559)	1
	615425	Burner Ring w/Nozzles (558)	1
4	961464	Tubing 1/4" Aluminum	*
5	826050	Compression Fitting	1
6	921320	Gas Valve	1
7	890724	Tee 1/2" x 1/2" x 1/4"	1
8	815277	Reducer Bushing 1/4" x 1/8"	1
9	915564	Pipe Plug 1/8"	1
10	897958	Nipple 1/2" x Close	1
11	875432	Pilot Indicator Light Switch	1
12	■	Flange Nut #10-24	2
13	■	Screw #10-24 x 1/2"	2
14	898361	Nipple 3/4" x 6"	1
15	220364	Pilot Mounting Bracket	1

Ref. No.	Part No.	Description	Qty.
16	■	Screw #10-24 x 1"	1
17	■	Locknut #10-24	1
18	■	Flat Washer #10	1
19	■	Screw #10-32 x 1/4"	2
20	829590	Gas Pilot	1
21	955901	Thermocouple	1
22	845001	Electrode With Bracket	1
23	■	Bolt 1/4"-20 x 3-1/2" Full Thread	1
24	■	Flange Nut 1/4"-20	3
25	954919	Ring Terminal	1
26	■	Bolt 1/4"-20 x 1/2"	1
27	676565	Fastener 1/4"-20	1
28	898351	Nipple 3/4" x 2-1/2"	1
29	898353	Nipple 3/4" x 3-1/2"	1

* Order amount needed in feet

■ Standard item available locally.

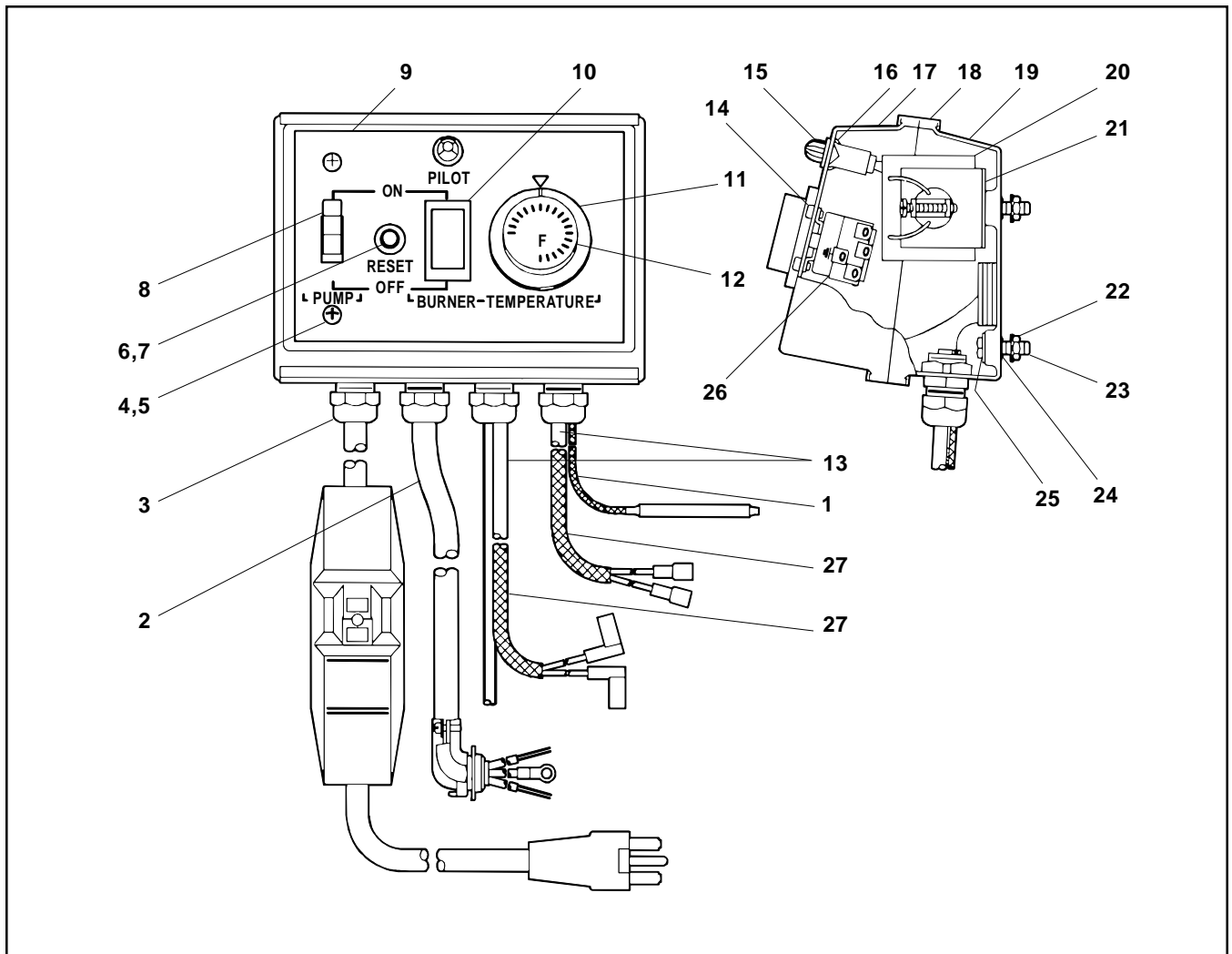


Figure 15 - Control Box Assembly

Ref. No.	Part No.	Description	Qty.
1	847750	Wire Cover	*
2	825989	Cord 12/3 SJO	*
3	826184	Strain Relief	4
4	■	Screw #10 - 32 x 1/2"	2
5	■	Nut #10 - 32	2
6	814044	Motor Reset Switch	1
7	936788	Nylon Washer 7/16"	1
8	950186	Pump Switch	1
9	646362	Control Box Decal	1
10	950187	Burner Switch	1
11	915390	Thermostat Mounting Plate	1
12	835150	Thermostat Dial	1
13	826011	Cord 16/2 SJO	*
14	■	Screw 4 mm x 6 mm	2
15	768342	Pilot Indicator Light	1

Ref. No.	Part No.	Description	Qty.
16	799250	Push Nut 1/2"	1
17	220307	Control Box Front	1
18	630649	Control Box Channel	2
19	615414	Control Box Back	1
20	960135	Transformer 120 x 24 Volt	1
21	351342	Bracket	1
22	■	Flange Nut 1/4" - 20	4
23	■	Bolt 1/4" - 20 x 1"	4
24	780570	Retaining Washer 1/4"	4
25	■	Flat Washer 1/4"	2
26	955930	Thermostat	1
27	722423	Insulation	*

* Order amount needed in feet

■ Standard hardware item available locally.

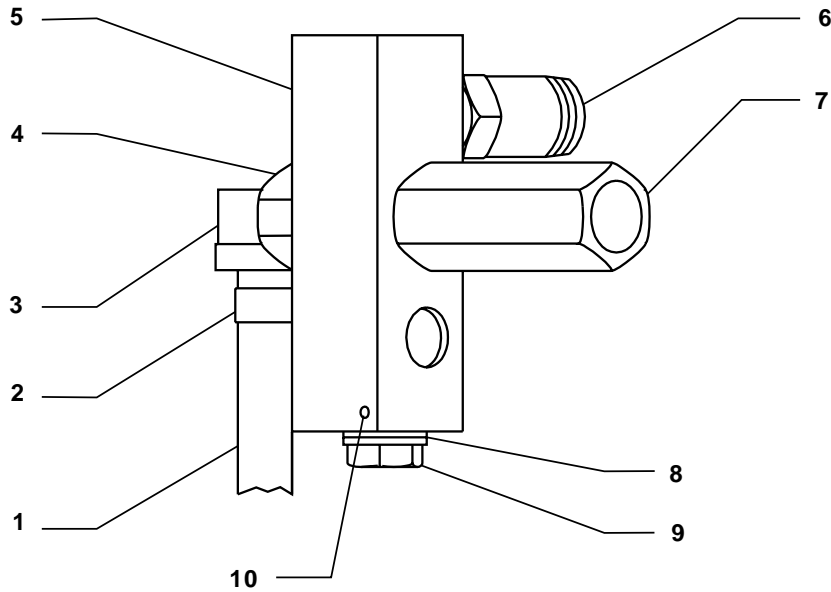


Figure 16 - Coil Outlet Assembly

Ref. No.	Part No.	Description	Qty.
1	961532	Vinyl Tubing 3/8"	*
2	823987	Hose Clamp	1
3	799501	Elbow 1/4" x 3/8" Hose	1
4	875555	Relief Valve Seat	1
5	783845	Manifold	1
6	698247	Hex Nipple 1/2" x 2"	1

Ref. No.	Part No.	Description	Qty.
7	640050	Relief Valve Cartridge	1
8	780565	Copper Washer	2
9	915630	Hex Plug	2
10	■	Screw 4 mm x 6 mm	1

■ Standard hardware item available locally.

* Order amount needed in feet.

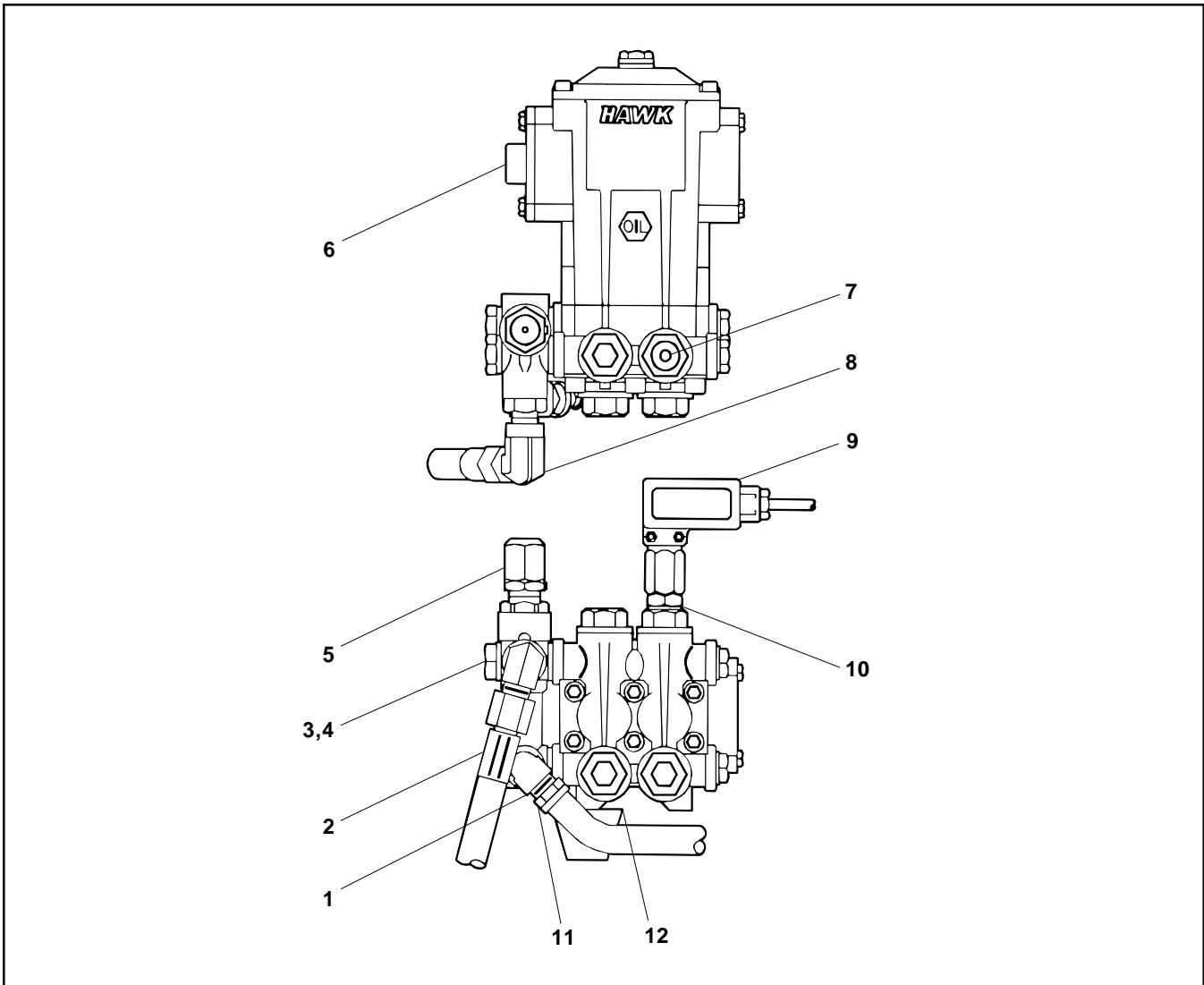


Figure 17 - Pump Assembly

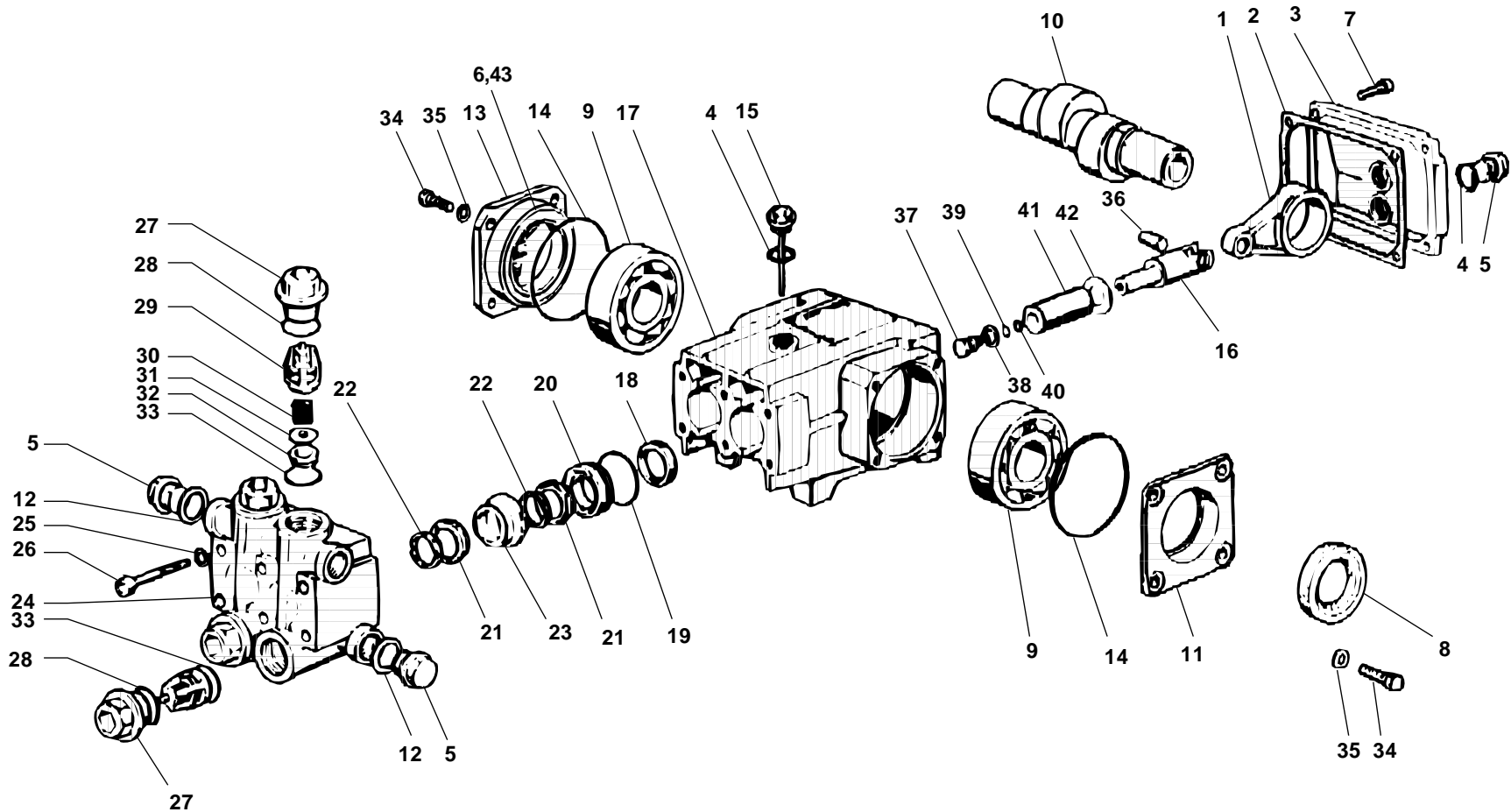
Ref. No.	Part No.	Description	Qty.
1	844753	Street Elbow 3/8"	1
2	707178	Hose 3/8" x 20"	1
3	651485	Banjo Bolt	2
4	936633	Flat Seal Washer	4
5	* 921368	Unloader Valve	1
6	HC165L	Pump Fig. 18	1
7	829596	Manifold Plug Tapped	1
8	644802	Street Elbow 3/8"	1
9	⊕ 875651	Pressure Switch	1
10	780565	Copper Washer	1

Ref. No.	Part No.	Description	Qty.
11	898035	Nipple 3/8" x 3/8" Hose	1
12	783654	Vibration Mount	1

Replacement Parts

⊕	753134	Pressure Switch O-Ring Kit
⊕	875653	Pressure Switch Micro Switch
*	753025	O-Ring Repair Kit
*	753026	Discharge Repair Kit
*	753027	Stem Repair Kit

Figure 18 - Pump, Exploded View



Ref. No.	Part No.	Description	Qty.
1	928706	Connecting Rod Assembly	2
2	855889	Crankcase Cover Gasket	1
3	827324	Crankcase Cover	1
4	855893	Gasket	2
5	915630	Plug 3/8"	3
6	878575	Sight Glass	1
7	735313	Crankcase Allen Screw	4
8	827319	Crankshaft Seal	1
9	808895	Bearing	2
10	630712	Crankshaft HC165	1
11	808896	Bearing Flange	1
12	780565	Copper Washer	2
13	867008	Bearing Housing	1
14	926648	Bearing Housing O-Ring	2
15	906532	Oil Dipstick	1
16	915835	Plunger Rod	2
17	827318	Crankcase	1
18	▼ ❖	Plunger Seal	2
19	▼ ◆	Pressure Ring O-Ring	2
20	▼	Pressure Ring 20 mm	2
21	▼ ◆	V-Sleeve 20 mm	4
22	▼ ◆	Support Ring 20 mm	4
23	▼	Intermediate Ring	2
24	884477	Manifold Housing	1
25	780560	Washer	6
26	612699	Manifold Stud Bolt	6
27	915631	Plug Manifold	4

Ref. No.	Part No.	Description	Qty.
28	926656	O-Ring Manifold Plug	4
29	★	Valve Cage	4
30	★	Valve Spring	4
31	★	Valve Plate	4
32	★	Valve Seat	4
33	★	Valve Seat O-Ring	4
34	735317	Hex Screw	8
35	780561	Washer Hex Screw	8
36	928463	Connecting Rod Pin	2
37	⌘	Plunger Assembly Bolt	2
38	⌘	Plunger Bolt O-Ring	2
39	⌘	Teflon Ring	2
40	⌘	Copper Spacer	2
41	⌘	Ceramic Plunger Sleeve	2
42	⌘	Copper Spacer	2
43	818575	Sight Glass O-Ring	1
NS	875526	Shaft Setscrew 6 mm x 6 mm	2

NS = Not Shown

Replacement Parts			Qty/Pump
◆	877686	Seal Packing Kit 20 mm 2 Cyl	1
▼	877685	Complete Seal Packing Kit	2
★	877648	Complete Valve Assembly Kit	4
❖	877687	Plunger Seal Kit 2 Cyl	1
⌘	877684	Ceramic Sleeve Kit	2
	918430	Hawk Tool Kit	1

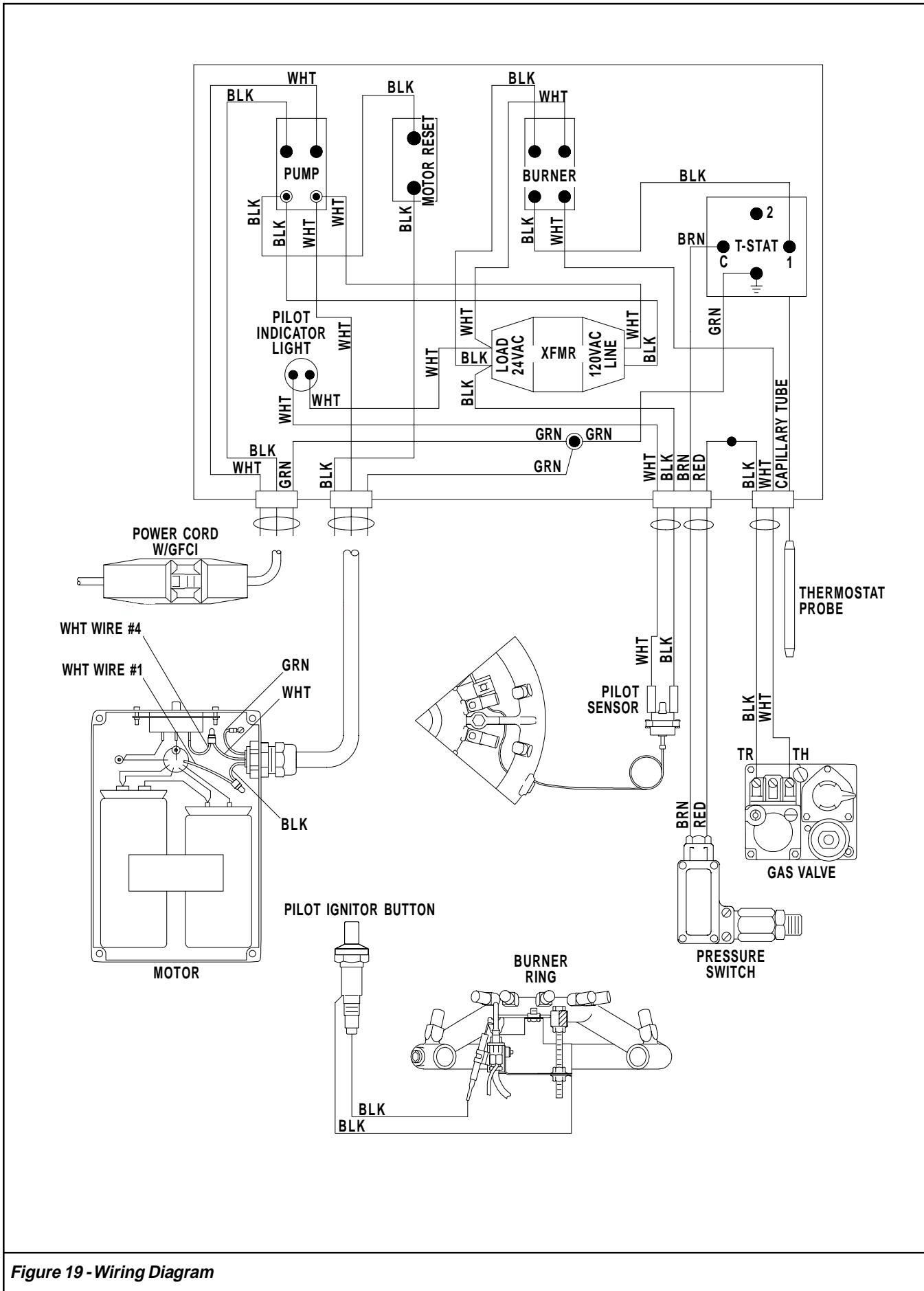


Figure 19 - Wiring Diagram

This Page Left Blank Intentionally.



WARRANTY

HOTSY LIMITED WARRANTY:

*Hotsy products are warranted by the Hotsy Corporation (Hotsy) to be free of defects in material and workmanship under normal use, for a period of **ONE YEAR** from the date of the original purchase. Items that fail due to normal wear such as o-rings hoses, seals, quick couplers, nozzles, gunjets, etc. or damage resulting from neglect, abuse, tampering, or modification are not covered under this warranty. Hotsy will at its option repair or replace any part covered by this warranty which is defective under normal use for one year at no charge for parts or labor. All defects must be verified by an authorized Hotsy service location.*

EXCEPTIONS TO THE ONE YEAR WARRANTY FOR PARTS ONLY ARE:

*Hawk Pumps: **SEVEN YEAR** Warranty (**LIFETIME** Brass Manifold Warranty-
Even Against Freezing)*

*Heating Coils: **FOUR YEAR** Warranty*

LIMITATION OF LIABILITY:

To the extent allowable under applicable law, Hotsy liability for consequential and incidental damages is expressly disclaimed. Hotsy liability in all events is limited to, and shall not exceed, the purchase price paid for the equipment. Hotsy liability is limited to repair or replacement of defective parts only, at the option of the Hotsy Corporation.

WARRANTY DISCLAIMER:

Hotsy has made a diligent effort to illustrate and describe the product in this literature accurately; however, such illustrations and descriptions are for the sole purpose of identification, and do not express or imply a warranty that the product is merchantable or fits a particular purpose, or that the product will necessarily conform to the illustrations or descriptions.

PRODUCT SUITABILITY:

Many states and localities have codes and regulations governing sales, construction, installation, and/or use of products for certain purposes, which may vary from those in neighboring areas. While attempts to assure that its products comply with such codes, it cannot guarantee compliance and cannot be responsible for how the product is installed or used. Before purchase and use of a product, please review the product application, and national and local codes and regulations, and be sure that the product, installation, and use will comply with them.

PROMPT DISPOSITION:

Hotsy will make a good faith effort for prompt correction or other adjustments with respect to any product which proves to be defective within limited warranty. For any product believed to be defective within limited warranty, contact dealer from whom product was purchased. Dealer will give additional directions. If unable to resolve satisfactorily, write to Hotsy at address below, giving dealer's name, address, date of purchase, model, serial number, and describing the nature of the defect. If product was damaged in transit to you, file claim with freight carrier.

The Hotsy Corporation
21 Inverness Way East
Englewood, Colorado 80112
(303) 792-5200