



*America's Premier  
Industrial Tool Storage*

Roller Cabinets and Carts

Mechanics Chests

Machinists Chests

Handcarry Toolboxes

Versatile Benches

Heavy Duty Workstations

Toolboard Storage System

Modular Cabinets

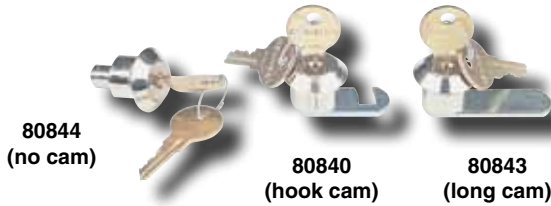
CNC Tool Storage Equipment

Service Shop Equipment

**Accessories**



## Security Systems



### Standard Cylinder Lock/Key Sets

- Key your chest and cabinet alike. Kennedy uses 350 lock and milled key changes for added tool protection.
- All locks can be keyed alike.

**Machinists' and Mechanics' Chests:** ..... **No. 80840**

**Chest Base Models MC22 and MC28 and Hang-on Models 182X, 202X, 302X and 382X:** ..... **No. 80843**

**Chest Base Models 2602, 2603, 2604, 2902, 5150; Mechanics' Chests 285(X), 2805(X); 27", 29" and 34" Roller Cabinets; Hang-on Models 185(X), 205(X), 306X, 386X and Versa-Cart® Models 415(X), and 435(X):** ..... **No. 80844**

**Additional Keys:** ..... **No. 80965**

### Tubular Lock and Key Sets

The type of lock found in many coin boxes, vending machines, pay phones, etc. Seven pin tumber cylinder construction. All locks can be keyed alike.

**Machinists' and Mechanics' Chests:**

**Replaces Standard Lock No. 80840:** ..... **No. 80401**

**Chest Base Models MC22 and MC28 and**

**Hang-on Models 182X, 202X, 302X and 382X**

**Replaces Standard Lock No. 80843:** ..... **No. 80402**

**Chest Base Models 2602, 2603, 2604, 2902, 5150; Mechanics' Chests 285(X), 2805(X); 27", 29" and 34" Roller Cabinets; Hang-on Models 185(X), 205(X), 306X, 386X; Versa-Cart® Models 415(X), 435(X) and 39", 44", 53" and 58" Maintenance Carts**

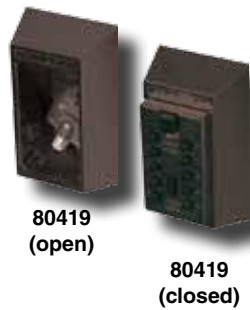
**Replaces Standard Lock No. 80844:** ..... **No. 80403**

**Additional Keys:** ..... **No. 80404**

**Note: For Standard Cylinder Lock Sets and Tubular Key High Security Lock Sets**—Each set includes one lock, two keys. When ordering, specify lock part number, quantity and if keyed alike (no extra charge). To ensure receipt of proper lock, please compare your present lock with photos above.

### Keysafe™ by Supra

- Keep your toolbox keys convenient and safe.
  - Also use to store house, garage or car keys.
  - Attaches securely and permanently to your chest/cabinet or any wall or flat surface with four screws (included).
  - Black powder coated finish.
  - 1½" W x 1" D x 2⅜" H.
  - Includes pushbutton combination lock.
- ..... **No. 80419**



### Security Lock Guard

- Provides added protection for your tools.
  - Fits over any Kennedy lock and secures with your own padlock.
- ..... **No. 80845**



### Multi-Lock Security Bar

- Folds over cabinet drawers and locks with padlock.
- Easily attaches to tool boxes.
- Comes with sheet metal screws and instructions.



### Drawer Security Compartment

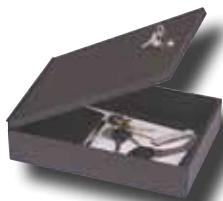
For chests & roller cabinets.

Steel compartments securely fasten to drawer through pre-drilled holes with included ¼" aluminum pop rivets.

Allows you to lock up personal valuables (wallet, jewelry, cash, keys, etc.) without having to lock up the entire chest or roller cabinet. Cylinder lock no. 80840 with two keys. Black finish.

5% W x 8" D x 1⅜" H. For drawers 2"H.  
..... **No. 80475**

7% W x 11" D x 2⅜" H. For drawers 4"H.  
..... **No. 80477**



Fits Model Nos.	Length	No.
263,266,360 2705X,285 (X),2805(X) 2812,2912X,3412X,TS261X	11"	<b>80788</b>
185(X),205(X),2005,273(X),275(X) 277(X),295(X),297(X),310X 415(X),435(X),TS265X All 54" Work Stations All 48" & 60" Versa-Benches	21½"	<b>80789</b>
2702MP, 2907X, 3402MP, 3407X 376(X), 378(X), 348X,315X	33½"	<b>80790</b>

## Drawer Organizers



### Drawer Dividers

- Keeps tools separated and organized.
- Fully adjustable. Spring clips hold in place.
- Machinists' Chests: Zinc coated steel.
- Mechanics' Chests and Cabinets: Aluminum.

Fits Model Nos.	Length	Height	Qty.	No.
520	7 <sup>5</sup> / <sub>16</sub> "	5 <sup>5</sup> / <sub>16</sub> "	4	<b>80850</b>
526,52611	7 <sup>5</sup> / <sub>16</sub> "	1 <sup>1</sup> / <sub>16</sub> "	1	5/pkg.
3611,263,266,360,2812				<b>82230</b>
2602,2603,2604,2902,5150	10 <sup>5</sup> / <sub>16</sub> "	1 <sup>3</sup> / <sub>8</sub> "	4	4/pkg.
	12"	3"	2	<b>82231</b>
2005	12"	1 <sup>3</sup> / <sub>8</sub> "	2	4/pkg.
2700MP,2705X,285(X) 2912X,3412X,310X,315X 2702MP,273(X),275(X),277(X) 376X,378X,185(X),386X,415(X) All Work Stations & All Tool Stands				
4804,4806 & all 60"Versa-Benches	16 <sup>3</sup> / <sub>8</sub> "	3"	2	<b>82232</b>
5300MP	16 <sup>3</sup> / <sub>8</sub> "	1 <sup>3</sup> / <sub>8</sub> "	2	4/pkg.
4800MP	23"	3"	2	<b>82233</b>
4810	23"	1 <sup>3</sup> / <sub>8</sub> "	2	4/pkg.
2805, 205(X), 295(X), 2905X, 297(X), 2907X, 3400MP, 3402MP 3407X, 348X, 306X,3900MP, 4400MP, 4410, 4405, 435(X) 5800MP	18 <sup>3</sup> / <sub>8</sub> " 18 <sup>3</sup> / <sub>8</sub> "	3" 1 <sup>3</sup> / <sub>8</sub> "	2 2	<b>82234</b> 4/pkg.



### Organizer Tray Set

- Neatly holds a multitude of small parts.
- High impact black polystyrene.
- Two trays per package, 10 comp. per tray.
- Tray size: 16 W x 11 D x 1<sup>1</sup>/<sub>4</sub>" H.

..... No. **82223**



### Sliding Steel Drawer Tray

- Slides freely in drawer.
  - Tan enamel finish.
  - For 4" deep or deeper drawers.
- (For drawers 23 in. wide) ..... No. **80870**  
 (For drawers 25 in. wide) ..... No. **80873**  
 (For drawers 30 in. wide) ..... No. **82160**



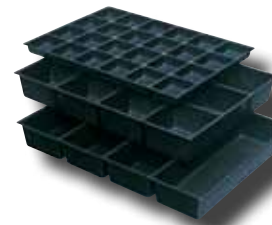
### Chest/Cabinet Foam

#### Tool Organizer

- Notice missing tools at a glance.
- 3/8" thick foam cut to fit drawer sizes listed at right, packaged three sheets per package.

- To install, simply lay tools on foam and trace around them with a hot pencil tip soldering iron. Remove unwanted material and place tool in pocket.

Fits Model Nos.	Width	Length	No.
2602,2603,2604			<b>80780</b>
263,266,360	10 <sup>3</sup> / <sub>4</sub> "	x 22 <sup>7</sup> / <sub>8</sub> "	
2812	10 <sup>3</sup> / <sub>4</sub> "	x 29 <sup>7</sup> / <sub>8</sub> "	<b>80781</b>
2702MP, 273(X), 275(X) 277(X), 376X, 378X, 285(X) 2705X, 2700MP	16 <sup>1</sup> / <sub>2</sub> "	x 23"	<b>80782</b>
2805(X), 2905X, 2912X 295(X), 297(X), 2907X	18 <sup>1</sup> / <sub>2</sub> "	x 25"	<b>80786</b>
3402MP, 3407X, 3412X 348X, 3400MP	18 <sup>1</sup> / <sub>2</sub> "	x 30"	<b>80787</b>



### ABS Plastic Drawer Organizer

- Organize, separate and arrange tools.
- Helps maximize drawer space.
- Made of durable ABS plastic.
- Round-cornered compartments for quick, easy retrieval of small parts.
- Fit either 2" or 4" or larger drawers.
- One-piece design for 27" & 29" cabinets.
- Two-piece design for 34" wide cabinets.

Divider Insert Description	For 27" Cab. No.	For 29" Cab. No.	For 34" Cab. No.	5 1/2" Adder Only. No.
2" Dr., 24 Comp.	81923	81929	81938	81939
2" Dr., 6 Comp.	81921	81927	81933	
2" Dr., 11 Comp.	81922	81928	81934	
4" Dr., 4 Comp.	81924	81930	81936	81940
4" Dr., 12 Comp.	81926	81932	81938	
4" Dr., 7 Comp.	81925	81931	81937	

## Drawer Slides

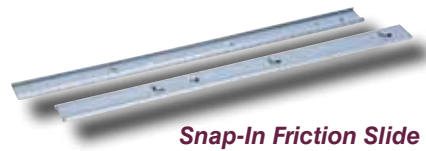


**Standard Friction Slide**

### Standard Friction Drawer Slides

- Two-piece, I-beam drawer slides permit smooth, easy full-drawer extension.
- Package includes 4 female and 2 male slides with spring clips.

..... Nos. **80887, 80888 and 80889**



**Snap-In Friction Slide**

### Snap-in Friction Drawer Slides

- Package includes 4 female and 2 male slides.
- For use in cabinets manufactured after April, 1996.

..... Nos. **82185, 82187 and 82189**



**Ball-Bearing Slide**

### Ball-Bearing Drawer Slides

- Three-member, full extension ball bearing slides permit effortless, feather-light movement.
- Package includes one left and one right hand slide.
- Replaces existing ball bearing slides. Or, interchangeable with I-beam slides in units manufactured after April, 1996.

..... No. **82183 and 82186**

Fits Model Numbers	No.
Two-piece, I-beam slides for 620, 520, 526, 52611, MC22, MC28, 220	<b>80887</b>
Two-piece, I-beam slides for 2005, 2812, 263, 266, 360, 2602, 2603, 2604, 2902, 5150	<b>80888</b>
Two-piece, I-beam slides for 185, 205, 285 All 27", 29" & 34" Roller Cabinets All 6 & 12-drawer Versa-Benches 54" Work Stations, All Tool Stands	<b>80889</b>
Standard Duty Ball-Bearing Slides 1 <sup>13</sup> / <sub>16</sub> " H x 16 <sup>3</sup> / <sub>16</sub> " L	<b>82183</b>
Standard Duty Ball-Bearing Slides 1 <sup>13</sup> / <sub>16</sub> " H x 22" L	<b>82186</b>
Snap-in Slides for 285, 273, 275, 277, 376, 378, 310, 315, 185, 386 Tool Stands and Work Stations	<b>82187</b>
Snap-in Slides for 2805, 2905, 3405, 293, 295, 297, 348, 205, 306	<b>82189</b>

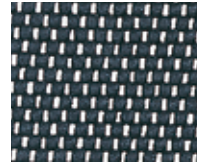


## Drawer Liners



### Heavy-Duty Chest/Cabinet Non-Slip Drawer Liner Doubles as a Top Mat

- Non-slip, open weave drawer liner keeps tools from shifting and sliding.
- Polyester fabric coated with PVC, 1/8" thick.
- Washable, mold and mildew resistant.



#### Drawer Liners for Chests and Cabinets

Fits Model Nos.	Rolls Required	Roll Size	No.
263,2602,2902,5150	2		<b>82080</b>
2005,266,360,2602,2603,2902	3		
2604	4	12 1/8 x 35 in.	
2812	5		
185(X), 273(X)	1		<b>82081</b>
2702MP, 275(X), 376X, 2700MP, 285(X)	2		
4804, 4806 & 60"Versa-Benches	2		
277(X), 378X, 2912X, 3412X	3	16 1/2 x 75 in.	
310X	3		
315X	4		
205(X)	1		<b>82082</b>
2805(X), 2905X, 295(X), 4405	2		
3400MP, 3412X, 3407X	3	18 1/2 x 77 in.	
2912X, 2907X, 297(X), 4410	3		
348X	3	18 1/2 x 91 in.	<b>82083</b>

#### Drawer Liner Kits

Fits Model Nos.	Pieces per Set	No.
3900MP	8	<b>82054</b>
4400MP, 4810	10	<b>82055</b>
4800MP, 4810	10	<b>82056</b>
5300MP	12	<b>82057</b>
5800MP	12	<b>82058</b>

#### Non-Slip Top Mat for Roller Cabinets & Hang-Ons

Fits Model Nos.	Width	Depth	No.
4405, 4410	43 3/8"	19 1/8"	<b>82073</b>
285, 273, 275, 277, 376X, 378X	26 3/4"	17 3/4"	<b>82070</b>
3402/3MP, 3407X, 348X	33 3/4"	19 3/4"	<b>82072</b>
2805, 295, 297, 2907X	28 3/4"	19 3/4"	<b>82071</b>
310X, 315X	39"	17 3/4"	<b>82074</b>
300MP, 301MP	13 3/8"	17 3/4"	<b>82089</b>
380MP, 381MP	13 3/8"	19 3/4"	<b>82088</b>



### Non-Slip Drawer Liner

- Non-slip, open weave drawer liner keeps tools in place.
- Polyester fabric coated with PVC.
- Washable, anti-fungus and mildew-proof.



### Chest/Cabinet Cork Drawer Liner

- Helps keep drawers clean and tools in place.
- Rubberoid cork 1/8 inches thick.

Fits Model Nos.	Rolls Required	Roll Size	No.
263,2602,2902,5150	2		<b>82095</b>
2005,266,360,2602,2603,2902	3	12 1/8 x 35 in.	
2604	4		
2812	5		
185(X), 273(X)	1		<b>82096</b>
275(X), 376X, 2705X, 285(X)	2	16 1/2 x 75 in.	
4804, 4806 & 60"Versa-Benches	2		
277(X), 378X, 2912X, 3412X	3		
310X	3		
315X	4		
205(X)	1		<b>82097</b>
2805(X), 2905X, 295(X), 4405	2	18 1/2 x 77 in.	
2912X, 3412X, 2907X, 3407X	3		
297(X), 4410	3		
348X	3	18 1/2 x 91 in.	<b>82098</b>

Fits Model Nos.	Rolls Required	Roll Size	No.
263,2602,2902,5150	2		<b>80821</b>
2005,266,360,2602,2603,2902	3	12 1/8 x 35 in.	
2604	4		
2812	5		
185(X), 273(X)	1		<b>80820</b>
275(X), 376X, 2705X, 285(X)	2	16 1/2 x 75 in.	
4804, 4806 & 60"Versa-Benches	2		
277(X), 378X, 2912X, 3412X	3		
310X	3		
315X	4		
205(X)	1		<b>80824</b>
295(X), 4405, 2805(X), 2905X	2	18 1/2 x 77 in.	
2912X, 297(X), 2907X	3		
3412X, 3407X, 4410	3		
348X	3	18 1/2 x 91 in.	<b>80825</b>



### Chest/Cabinet Foam Drawer Liner

- Helps protect tools from moisture and keeps them in place.
- Polyethylene foam 1/16 in. thick.

Fits Model Nos.	Rolls Required	Roll Size	No.
263,2602,2902,5150	2		<b>80822</b>
2005,266,360,2602,2603,2902	3	12 1/8 x 35 in.	
2604	4		
2812	5		
185(X), 273(X)	1		<b>80823</b>
275(X), 376X, 2705X, 285(X)	2	16 1/2 x 75 in.	
4804, 4806 & 60"Versa-Benches	2		
277(X), 378X, 2912X, 3412X, 310X	3		
315X	4		
205	1		<b>80826</b>
295(X), 4405, 2905X, 2805(X)	2	18 1/2 x 77 in.	
2912X, 297(X), 2907X	3		
3412X, 3407X, 4410, 348X	3	18 1/2 x 91 in.	<b>80827</b>

**Top Mats and Miscellaneous Accessories**

**Deluxe, Heavy-Duty**

**Cabinet Top Mat**

- Black vinyl mat is 50% thicker than our regular mat.
- Lays flat with more rigidity.
- Pyramid shape embossing increases friction, reduces slipping.
- Long wearing, resists oil.



Fits Model Nos.	Width	Depth	No.
185(X), 415(X), 386X	13 3/8"	17 3/4"	<b>80440</b>
205(X), 435(X), 306X	13 3/8"	19 3/4"	<b>80441</b>
285(X), 273(X), 275(X), 277(X), 376X, 378X	26 3/4"	17 3/4"	<b>80455</b>
2805(X), 295(X)	28 3/4"	19 3/4"	<b>80456</b>
297(X), 2907X			
3407X, 348X	33 3/4"	19 3/4"	<b>80458</b>
310X, 315X	39"	17 3/4"	<b>80457</b>
4405, 4410	43 3/8"	19 1/8"	<b>80459</b>



**Cabinet Top Mat**

- Protects against scuffs and abrasions.
- Reduces chest movement.
- Black vinyl pre-cut mat .075 in. thick.

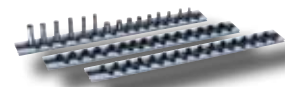
Fits Model Nos.	Width	Depth	No.
4405, 4410	43 3/8"	19 1/8"	<b>80808</b>
185(X), 415(X), 386X	13 3/8"	17 3/4"	<b>82089</b>
205(X), 435(X), 306X	13 3/8"	19 3/4"	<b>82088</b>
2005	20 1/4"	13 3/8"	<b>82090</b>
285(X), 273(X), 275(X), 277(X), 376X, 378X	26 3/4"	17 3/4"	<b>82091</b>
3407X, 348X	33 3/4"	19 3/4"	<b>82092</b>
2805(X), 295(X), 297(X), 2907X	28 3/4"	19 3/4"	<b>82093</b>
310X, 315X	39"	17 3/4"	<b>82099</b>



**Cabinet Plastic Work Surface**

- Seamless, ABS black plastic cover fits snugly over roller cabinet top.
- 3/4" raised lip helps prevent roll off.
- Easy to clean, adds finished look.

(For cabinets 27 in. wide x 18 in. deep).....**No. 82170**  
 (For cabinets 29 in. wide x 20 in. deep).....**No. 82171**  
 (For cabinets 34 in. wide x 20 in. deep).....**No. 82172**

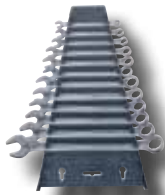


**Socket Rails**

- Plastic socket rails lock and unlock sockets with a simple twist.
- Tongue and groove design locks racks

together for storage in chests and cabinets.  
 • Erasable strip for labeling. Each holds 15 drives. 20" long.

**Socket Rail Size 1/4** .....**No. 80434**  
**Socket Rail Size 3/8** .....**No. 80435**  
**Socket Rail Size 1/2** .....**No. 80436**  
**Set of 3 Socket Rails**.....**No. 80437**



**Wrench Rack**

- Holds and organizes up to 15 wrenches.
- Can be stored in a drawer or hung on the wall.
- Rests on foam pads.
- Made of lightweight, durable 3/8" molded plastic.
- Available in black finish only.
- Tools not included.

..... **No. 80874**



**Magnetic Parts Tray**

- A product of Homak Mfg.
- Heavy-duty magnets hold nuts, bolts, etc. in place to make fix-it jobs easier.
- Magnetized tray back sits securely on metal surfaces.

**Tray dimensions, 9 1/2 x 5 1/2 x 1 1/4"**..... **No. 80481**



**Tubular Handle for Cabinets**

- Full-size, chrome plated tubular handle attaches to either side of any Kennedy 27", 29" 34" or 44" roller cabinet.

**Hole Center distance of 15 3/4"**.....**No. 82245**  
**Hole Center distance of 11 1/4"**.....**No. 82248**  
**Hole Center distance of 16 3/4"**.....**No. 82249**



**End Handle/Screwdriver Tray**

- Attaches to any Kennedy roller cabinet for easy access to screwdrivers.
- Also serves as a push handle.
- 6 1/4" W x 18" D x 2" H.
- Tools not included.
- **Brown Wrinkle Finish**.....**No. 80809**
- **Red Smooth Finish**.....**No. 80810**



**Screwdriver Tray**

- Attaches to any Kennedy roller cabinet for easy access to screwdrivers.
- Also holds standard aerosol spray cans.
- Tools not included.
- **Brown Wrinkle Finish**.....**No. 80876**
- **Red Smooth Finish**.....**No. 80878**



**Hang-on Storage Rack**

- Keeps tools handy and organized.
- Hangs on roller cabinets, service carts, parts washers, etc.
- Ideal for industrial, automotive, home use.
- Install or remove in seconds.
- Available in 16" or 20" widths.

**16" W x 6" D x 2" H**.....**No. 80996**  
**20" W x 6" D x 2" H**.....**No. 80997**

**Touch-up Paint**

- Touch up scratches and minor abrasions.
- Textured wrinkle or smooth finish.
- 12 ounce aerosol can or 0.6 ounce liquid bottle.
- Not for large area coverage.



**Spray Cans**

- Smooth Red.....**No. 80859**
- Brown Wrinkle.....**No. 80860**
- Gray Wrinkle.....**No. 80861**
- Black Wrinkle.....**No. 80862**
- Versa-Bench Brown.....**No. 80869**
- Gloss Yellow.....**No. 82176**
- Gloss Blue.....**No. 82211**
- Gloss Black.....**No. 82203**

**Touch-up Bottles**

- Smooth Red.....**No. 82173**
- Brown Wrinkle.....**No. 82174**
- Gloss Yellow.....**No. 82175**
- Gloss Blue.....**No. 82210**
- Gloss Black.....**No. 82201**



**Roller Cabinet Corner Bumpers**

- Protect roller cabinets, carts, mobile work stations.
- Hard rubber bumpers protect against dents and scrapes when changing work sites. Helps to avoid damage to auto, machinery, walls, etc.
- Four easy-to-install screw fasteners included.



**Aluminum Drawer Pulls**

- Made of extruded aluminum. Won't rust, crack or peel.

(Set of 6) 5" drawer pulls plus 12 screws/pkg. ....**No. 80885**  
 (Set of 5) 10" drawer pulls plus 10 screws/pkg. ....**No. 80886**  
 (Set of 3) 23" drawer pulls plus 12 screws/pkg. ....**No. 82118**  
 (Set of 3) 25" drawer pulls plus 12 screws/pkg. ....**No. 82119**  
 (Set of 3) 30" drawer pulls plus 12 screws/pkg. ....**No. 82120**

## Roller Cabinet and Mobile Tool Cart Work Surfaces



### Maple Work Surface

- 1 1/2" thick butcher block maple top.
- Full-length laminations specially selected for grain and color match.

- Kitchen counter quality for years of fine use.
- Comes with care instructions.



### Resistop Work Surface

- Solid phenolic, non-conductive black surface.

- Durable, high impact and shock resistant.
- Stain, chemical and corrosion resistant.



### Coated Work Surface

- Durable, coated MDF work surface protects cabinet top.

- Textured, nonporous coating is easy to clean and won't crack or warp.
- Non-skid texture keeps tools in place.

Width	Depth	Height	Fits	
			Model Nos.	No.
20 1/4"	13 3/8"	1 1/2"	2005	80881
13 3/8"	17 3/4"	1 1/2"	185(X), 415(X), 386X	80380
26 3/4"	17 3/4"	1 1/2"	285(X), 273(X), 275(X), 277(X), 376X, 378X	80882
13 3/8"	19 3/4"	1 1/2"	205(X), 435(X), 306X	80381
28 3/4"	19 3/4"	1 1/2"	2805(X), 295(X), 297(X), 2907X	80883
33 3/4"	19 3/4"	1 1/2"	3407X, 348X	80884
43 5/16"	19 11/16"	1 1/2"	4405, 4410	80382
39"	17 3/4"	1 1/2"	310X, 315X	80880

Width	Depth	Height	Fits	
			Model Nos.	No.
20 1/4"	13 3/8"	1 1/2"	2005	82100
13 3/8"	17 3/4"	1 1/2"	185(X), 415(X), 386X	82101
26 3/4"	17 3/4"	1 1/2"	285(X), 273(X), 275(X), 277(X), 376X, 378X	82104
13 3/8"	19 3/4"	1 1/2"	205(X), 435(X), 306X	82102
28 3/4"	19 3/4"	1 1/2"	2805(X), 295(X), 297(X), 2907X	82105
33 3/4"	19 3/4"	1 1/2"	3407X, 348X	82106
43 5/16"	19 11/16"	1 1/2"	4405, 4410	82103
39"	17 3/4"	1 1/2"	310X, 315X	82107

Width	Depth	Height	Fits	
			Model Nos.	No.
39 7/8"	19 3/4"	5/8"	3900MP	80391
43 5/16"	25 7/8"	5/8"	4400MP, 4410	80392
47 7/8"	25 7/8"	5/8"	4800MP, 4810	80393
52 5/8"	17 3/4"	5/8"	5300MP	80394
56 7/8"	19 3/4"	5/8"	5804MP	80395

## Roller Cabinet Casters

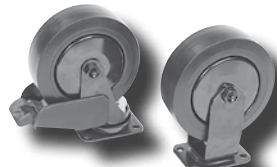


### Roller Cabinet Caster Sets

- Soft rubber tread, hard rubber core bonded to metal center.
- For cabinets 20, 27, 29 or 34 in. wide.



### 5 x 1 1/2" Dual-Lok Caster Set



### 6 x 2" Roller Cabinet Caster Set

- 6 x 2" roller bearing casters made of black polypropylene tread molded to polypropylene core.
- Swivel casters have lock brake that locks both wheel and swivel.



### Versa-Bench® Caster Sets

- 8 x 2" roller bearing casters with phenolic wheels.
- For all Versa-Bench® models.

Diameter x Width	Overall Height	Capacity Ea. Lbs.	Bearing Type	No.
3 x 1 1/4"	3 3/4"	125	Sintered	80830
				(4) swivel
				For Model No. 2005
5 x 2"	6"	350	Sintered	80832
				(2) fixed
				(2) swivel
				For Model Nos. 273(X), 275(X), 277(X), 295(X), 297(X), 376X, 378X, 310X, 315X
5 x 1 1/4"	6"	200	Sintered	80835
				(2) fixed
				(2) swivel
				For Model Nos. 273, 275, 277, 295, 297
5 x 2"	6"	350	Roller	80837
				(2) fixed
				(2) swivel
				For Model Nos. 273(X), 275(X), 277(X), 295(X), 297(X), 2907X, 3407X, 348X
5 x 2"	6"	350	Roller	80977
				(2) swivel
				For Model Nos. 435(X), 415(X)
5 x 1 1/2"	6 1/4"	450	Sintered	80985
				(2) fixed
				(2) swivel
				w/Dual-Lok
				(2) swivel
				w/DualLok
6 x 2"	7 1/2"	700	Roller	80980
				(2) fixed
				(2) swivel
				For Model Nos. 273(X), 275(X), 277(X), 376X, 378X, 295(X), 297(X), 2907X, 3407X, 348X, 310X, 315X
				Benchmark® Roller Cabinets Mfgd. before 1/11/03
6 x 2"	7 1/2"	700	Roller	80930
				(2) fixed
				(2) swivel
				310X, 315X Mfgd. after 12/31/02
				Benchmark® Roller Cabinets Mfgd. after 12/31/02
				2702MP, 3402MP, 3900MP
6 x 2"	7 1/2"	700	Roller	80931
				(4) swivel
				4400MP, 5300MP, 5804MP

No.	Diameter x Width	Overall Height	Capacity Ea. Lbs.	Bearing Type
80838	8 x 2"	9 1/2"	900	Roller
(2) swivel				
80839	8 x 2"	9 1/2"	900	Roller
(2) fixed, (2) swivel				