

# 2009 QUICKSHIP PROGRAM



[www.KENNEDYMFG.com](http://www.KENNEDYMFG.com)



*America's Premier Industrial Tool Storage*

Toll-Free: 1-800-413-8665  
Local: 419-238-2442  
Fax: 419-238-5644

[www.kennedymfg.com](http://www.kennedymfg.com)

Kennedy Manufacturing Co.  
1260 Industrial Drive  
Van Wert, OH 45891-2433

**KENNEDY**



[www.kennedymfg.com](http://www.kennedymfg.com)  
1-800-413-8665

**Since 1911...**



## **The tool storage products you need delivered fast**

Kennedy Manufacturing knows that sometimes you and/or your customers need tool storage products in a matter of days if not hours. That is why Kennedy Manufacturing developed the Kennedy Xpress program. With the Xpress program, your Kennedy product will ship within 3 business days. The new Xpress catalog includes a selection of our most popular products, ready to ship when needed. Place your order today with the Kennedy Xpress program through your local Kennedy distributor and you can now be working instead of waiting.



### Legal Limitations:

1. To ship within (3) three business days, all orders must be received by Kennedy customer service department by noon Eastern Time of the first business day. If not, the 3 day shipping clock will start on the next business day. Weekends/Holidays are not considered business days.
2. Limited to a quantity of 3 per part number of those items in the Xpress program.
3. Kennedy Xpress products are only available in the colors indicated. Product specifications and availability are subject to change without notice.
4. The Kennedy Xpress three day shipping program is a goal, not a guarantee on any/all orders/products placed under this program. All efforts will be made to contact you in the event that for some reason we cannot ship your order in 3 days.

---

**For Pricing and Ordering, please contact a customer service representative at 1-800-413-8665 to obtain the location of your nearest authorized distributor.**



**Kennedy is established.**

**1911**

*First products:*

*-Metal suitcase boxes*

*-First metal tackle boxes*

*-First metal mechanics kit*



**1912**

**The Titanic's Maiden Voyage.**



www.kennedymfg.com  
1-800-413-8665

# TABLE OF CONTENTS

INDUSTRIAL HAND-CARRY TOOLBOXES .....	1
MASTER SERIES .....	2
MECHANIC'S SERIES .....	3
MACHINIST'S SERIES .....	4-5
MAINTENANCE PRO™ SERIES .....	6-7
PRO-LINE™ SERIES .....	8-9
INDUSTRIAL SERIES .....	10-12
VERSA-BENCH® & VERSA-CART® .....	13
HANG-ON CABINETS.....	14
TOOL STORAGE ACCESSORIES.....	15-16
TOOLBOARD PRODUCTS.....	17-18
CUTTERKART™.....	19
HMS™ SERIES .....	20
MODULAR STORAGE .....	21-22



*If you are the original purchaser of a new Kennedy product, then you are entitled to a LIFETIME limited warranty on that product. The LIFETIME limited warranty extends only to the repair or replacement of parts found upon Kennedy's examination to be defective in the material or workmanship of the manufacturer. This warranty does not cover products that are damaged through any misuse, accidental mishandling, neglect, or modification. The condition of this LIFETIME limited warranty covers parts only, not labor and only applies to the original purchaser of that product. Kennedy is not responsible for any incidental or consequential damages which may arise out of the purchase or use of any Kennedy product; and Kennedy's liability for any breach of warranty shall be limited to replacement of the defective part or parts as described above.*



The Kennedy Factory moves to Van Wert, Ohio located on Jackson Street at the urging of local businessmen.

1914

(August 3) World War One begins.

### Industrial Hand-Carry Toolboxes

Our Industrial Hand-Carry Toolboxes are a great addition to any worksite, garage, or small business. Choose from a variety of designs that include drawers or a cantilever-style body. With a trusted and experienced brand name such as Kennedy, you're guaranteed the quality and performance you deserve.



#### Model - 5220 - 20" Industrial Tool Tote Steel Toolbox



- Solid Industrial Quality Construction
- Brown Wrinkle Powder Coat Paint Finish
- Steel Tool Tray Included
- Manufactured Using a High Grade of Steel for Maximum Durability

#### Overall Dimensional Details

Drawers	Width	Depth	Height	Cu. Inches	
5220	0	20	7 7/8	7 1/4	1,142

#### Metal Thickness

Body	Frame
22 ga.	22 ga.

#### Weight & Model Information

Model	Color	UPC	Net Wt.	Ship Wt.
5220	Brown	05220	9 lbs.	10 lbs.

#### Model K20, K24 - 20" & 24" Industrial Toolboxes



- Solid Industrial Quality Construction
- Brown Wrinkle Powder Coat Paint Finish
- Steel Tool Tray Included
- Manufactured Using a High Grade of Steel for Maximum Durability
- Lid Secured By a Triple-Clasp System

#### Overall Dimensional Details

	Width	Depth	Height	Cu. Inches
K20	20 1/8	8 5/8	9 3/4	1,692
K24	24 1/8	8 5/8	9 3/4	2,029

#### Metal Thickness

Body	Frame
22 ga.	22 ga.

#### Weight & Model Information

Model	Color	UPC	Net Wt.	Ship Wt.
K20	Brown	00031	13 lbs.	14 lbs.
K24	Brown	00032	14.5 lbs.	16 lbs.

#### 1022 - 22" Industrial Cantilever Toolboxes



- Solid Industrial Quality Construction
- Secured with a Triple Clasp System
- Powder Coat Paint Finish
- 4 Individual Shelves for More Organization
- Bottom Storage Space for Larger Tools and Accessories
- Additional Tray Divider Sets Available

• **Available Summer 2009**

#### Weight & Model Information

Model	Color	UPC	Net Wt.	Ship Wt.
1022	Brown	00027	21 lbs.	22 1/2 lbs.

#### Overall Dimensional Details

Drawers	Width	Depth	Height	Cu. Inches	
1022	0	22 1/8	10	12 5/8	2,793

#### Drawer Dimensional Details

Trays	Width	Depth	Height	Cu. Inches	
1022	4	20 1/4	4 3/4	1 1/2	577

#### Metal Thickness

Body	Drawers
22 ga.	22 ga.



Charles Kennedy moves from Chicago to Van Wert and takes over as president.

**1915**

First Transatlantic phone call is made between Arlington, Virginia, and Paris, France.



**1918**

(Nov. 11) World War One ends.

**Master Series**

Our Master Series units are an ideal solution to your organizational needs. Combining superior quality with innovative design, Master Series tool storage provides customer satisfaction along with reliable high quality construction.



[www.kennedymfg.com](http://www.kennedymfg.com)  
1-800-413-8665

**Model 3407XB - 7 Drawer Roller Cabinet**



- High Security Tubular Locks
- Ball-Bearing Drawer Slides
- Powder Coat Paint Finish
- 5"x2" Roller Bearing Casters
- Triple Wall Construction
- Heavy Gauge Bottom Reinforcements

**Weight & Model Information**

Model	Color	UPC	Net Wt.	Ship Wt.
3407XB	Brown	10162	203 lbs.	231 lbs.

**Overall Dimensional Details**

	Drawers	Width	Depth	Height	Cu. Inches
3407XB	7	34	20	40	27,200

**Drawer Dimensional Details**

	Drawers	Width	Depth	Height	Cu. Inches
	3	30	18 1/2	2	3,330
	3	30	18 1/2	4	6,660
	1	30	18 1/2	10	5,550

**Load Capacity**

	Type	Each	Total
Drawer	Ball-Bearing	120 lbs.	840 lbs.
Caster	5" x 2"	350 lbs.	1,400 lbs.

**Metal Thickness**

	Body	Frame	Drawers
	18 ga.	16 ga.	18 ga.

**Model 4410B / 4410R - 10 Drawer Heavy Duty Roller Cabinet**



- High Security Tubular Locks
- Ball-Bearing Drawer Slides
- Powder Coat Paint Finish
- Four 6"x2" roller bearing casters
- Two 10" wheels w/ solid rubber tires on center axle

**Weight & Model Information**

Model	Color	UPC	Net Wt.	Ship Wt.
4410B	Brown	10284	301 lbs.	316 lbs.
4410R	Red	10282	301 lbs.	316 lbs.

**Overall Dimensional Details**

	Drawers	Width	Depth	Height	Cu. Inches
4410B	10	43 3/4	20	37 1/2	32,813
4410R	10	43 3/4	20	37 1/2	32,813

**Drawer Dimensional Details**

	Drawers	Width	Depth	Height	Cu. Inches
	1	39 1/2	18 1/2	6	4,384
	3	12	18 1/2	2	1,332
	1	12	18 1/2	10	2,220
	2	25	18 1/2	2	1,850
	3	25	18 1/2	4	5,550

**Load Capacity**

	Type	Each	Total
Drawer	Ball-Bearing	120 lbs.	1,300 lbs.
Caster	6" x 2"	700 lbs.	2,800 lbs.
	10" x 2"	500 lbs.	1,000 lbs.

**Metal Thickness**

	Body	Frame	Drawers
	16 ga.	16 ga.	16 ga.



Kennedy moves into larger facility several blocks away as business grows.

1919



1920

18th Amendment prohibits alcohol.

### Mechanic's Series

These units are a mechanic's favorite chest for storage space and value. With the strong design and variety of sizes, these units are made to be utilized to safely store most types of hand tools and hardware.



#### Model 285B / 285R - 5 Drawer Mechanic's Chest



- Tubular Locking System
- Powder Coat Paint Finish
- Snap-In Friction Slides Hold a Load Capacity of 90 Lbs/Drawer
- Full-Width Drawers Store Extra-Long Tools
- Internal Drawer Locking System
- Fits On 27" Rolling Cabinets

#### Weight & Model Information

Model	Color	UPC	Net Wt.	Ship Wt.
285B	Brown	00050	75 lbs.	84 lbs.
285R	Red	10329	75 lbs.	84 lbs.

#### Overall Dimensional Details

Drawers	Width	Depth	Height	Cu. Inches	
285B	5	27	18	16 5/8	8,080
285R	5	27	18	16 5/8	8,080

#### Drawer Dimensional Details

Drawers	Width	Depth	Height	Cu. Inches
4	23	16 1/2	2	3,036
1	23	16 1/2	4	966

#### Load Capacity

Drawer	Type	Each	Total
Drawer	Friction	90 lbs.	450 lbs.

#### Metal Thickness

Frame	Drawers
18 ga.	20 ga.

#### Model 266B / 266R - 6 Drawer Mechanic's Chest



- Tubular Locking System
- Powder Coat Paint Finish
- Friction Slides Hold a Load Capacity of 90 Lbs/Drawer
- Locking Lid Hinges
- Full-Length staked Chest Hinges are Securely Welded
- Partitioned Top Till Holds Lift-Out Tray
- Internal Drawer Locking System
- Fits On 27" or 29" Rolling Cabinets

#### Weight & Model Information

Model	Color	UPC	Net Wt.	Ship Wt.
266B	Brown	00048	52 lbs.	58 lbs.
266R	Red	10141	52 lbs.	58 lbs.

#### Overall Dimensional Details

Drawers	Width	Depth	Height	Cu. Inches	
266B	6	26 1/8	12	14 3/4	4,624
266R	6	26 1/8	12	14 3/4	4,624

#### Drawer Dimensional Details

Drawers	Width	Depth	Height	Cu. Inches
Till	26	11 7/8	2 5/8	810
Tote Tray	19 1/2	7 3/4	3 3/8	510
3	6 7/8	10 3/4	2	443
2	22 7/8	10 3/4	2	983
1	22 7/8	10 3/4	3	737

#### Load Capacity

Drawer	Type	Each	Total
Drawer	Friction	90 lbs.	540 lbs.

#### Metal Thickness

Body	Drawers
20 ga.	22 ga.

#### Model 360B / 360R - 10 Drawer Mechanic's Chest



- Tubular Locking System
- Powder Coat Paint Finish
- Friction Slides Hold a Load Capacity of 90 Lbs/Drawer
- Locking Lid Hinges
- Two-piece Welded I-Beam Drawer Slides
- Steel Tote Tray
- Internal Drawer Locking System
- Fits On 27" or 29" Rolling Cabinets

#### Weight & Model Information

Model	Color	UPC	Net Wt.	Ship Wt.
360B	Brown	00078	68 lbs.	75 lbs.
360R	Red	10289	68 lbs.	75 lbs.

#### Overall Dimensional Details

Drawers	Width	Depth	Height	Cu. Inches	
360B	10	26 1/8	12	18 7/8	5,917
360R	10	26 1/8	12	18 7/8	5,917

#### Drawer Dimensional Details

Drawers	Width	Depth	Height	Cu. Inches
Till	26	11 7/8	2 5/8	810
Tote Tray	19 1/2	7 3/4	3 3/8	510
1	6 7/8	10 3/4	6 1/4	461
6	6 7/8	10 3/4	2	886
2	22 7/8	10 3/4	2	491
1	22 7/8	10 3/4	3	737

#### Load Capacity

Drawer	Type	Each	Total
Drawer	Friction	90 lbs.	900 lbs.

#### Metal Thickness

Body	Drawers
20 ga.	22 ga.



1929

Stock Market crashes.



1930

Bank tries to close company during depression causing Kennedy to borrow from the Reinvestment Financial Corporation and remain open.





### Machinist Series

For over 90 years, American journeymen and apprentices have made Kennedy the machinist's toolbox of choice. Handed down from father to son, four generations of American craftsmen know Kennedy quality and durability.

#### Model 520 - 20" 7 Drawer Apprentice Chest



- Brown Wrinkle Powder Finish
- High Security Tubular Key Locking Mechanisms
- Welded Friction Slides
- Drawers and Top Till Are Wool Felt-Lined
- Top Chests Include adjustable, zinc-coated steel drawer dividers
- Locking Lid Hinges

#### Weight & Model Information

Model	Color	UPC	Net Wt.	Ship Wt.
520	Brown	00001	28 lbs.	35 lbs.

#### Model 526 - 26" 8 Drawer Journeyman Chest



- Brown Wrinkle Powder Finish
- High Security Tubular Key Locking Mechanisms
- Welded Friction Slides
- Drawers and Top Till Are Wool Felt-Lined
- Top Chests Include adjustable, zinc-coated steel drawer dividers
- Locking Lid Hinges

#### Weight & Model Information

Model	Color	UPC	Net Wt.	Ship Wt.
526	Brown	00002	36 lbs.	44 lbs.

#### Model 52611 - 26" 11 Drawer Journeyman Machinist Chest



- Brown Wrinkle Powder Finish
- High Security Tubular Key Locking Mechanisms
- Welded Friction Slides
- Drawers and Top Till Are Wool Felt-Lined
- Include adjustable, zinc-coated steel drawer dividers
- Locking Lid Hinges
- Felt Covered Bottom Glides to Protect Drop Front Panel from Scratches

#### Weight & Model Information

Model	Color	UPC	Net Wt.	Ship Wt.
52611	Brown	00094	47 lbs.	56 lbs.

#### Overall Dimensional Details

Drawers	Width	Depth	Height	Cu. Inches	
520	7	20 1/8	8 1/2	13 5/8	2,330

#### Drawer Dimensional Details

Drawers	Width	Depth	Height	Cu. Inches
Till	20	8 3/8	3 1/4	544
4	8 5/8	8 3/8	1	288
1	8 5/8	7 1/2	2	129
1	18 1/4	7 1/2	1 1/2	205
1	18 1/4	7 1/2	2 1/4	307

#### Load Capacity

Type	Each	Total	
Drawer	Friction	60 lbs.	420 lbs.

#### Metal Thickness

Body	Frame	Drawers
20 ga.	20 ga.	22 ga.

#### Overall Dimensional Details

Drawers	Width	Depth	Height	Cu. Inches	
526	8	26 3/4	8 1/2	13 5/8	3,097

#### Drawer Dimensional Details

Drawers	Width	Depth	Height	Cu. Inches
Till	26 1/2	8 3/8	3 1/4	721
Handbook	5 1/2	7 1/2	3 1/4	134
4	8 5/8	7 1/2	1	258
1	8 5/8	7 1/2	2	129
1	24 3/4	7 1/2	1 1/2	278
1	24 3/4	7 1/2	2 1/4	417

#### Load Capacity

Type	Each	Total	
Drawer	Friction	60 lbs.	480 lbs.

#### Metal Thickness

Body	Frame	Drawers
20 ga.	20 ga.	22 ga.

#### Overall Dimensional Details

Drawers	Width	Depth	Height	Cu. Inches	
52611	11	26 3/4	8 1/2	18	4,093

#### Drawer Dimensional Details

Drawers	Width	Depth	Height	Cu. Inches
Till	26 1/2	8 3/8	3 1/4	721
Handbook	5 1/2	7 1/2	4 3/8	180
6	8 5/8	7 1/2	1	388
1	8 5/8	7 1/2	2	129
1	24 3/4	7 1/2	1 1/2	274
1	24 3/4	7 1/2	2 1/4	418
1	24 3/4	7 1/2	3 1/8	580

#### Load Capacity

Type	Each	Total	
Drawer	Friction	60 lbs.	660 lbs.

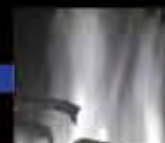
#### Metal Thickness

Body	Frame	Drawers
20 ga.	20 ga.	22 ga.



Sales start to improve as new products are introduced such as: Roller Cabinets, Roller Dolly, Parts Cabinets, and Small Parts Drawers.

1935



1937

Dow Chemical develops plastics.

Model MC22 - 22" 2 Drawer Add-On Base



- Brown Wrinkle Powder Finish
- High Security Tubular Key Locking Mechanisms
- Welded Friction Slides
- Wool Felt-Lined Top Drawer
- Fits under models 520

**Weight & Model Information**

Model	Color	UPC	Net Wt.	Ship Wt.
MC22	Brown	00004	17 lbs.	19 lbs.

**Overall Dimensional Details**

Drawers	Width	Depth	Height	Cu. Inches	
MC22	2	21 5/8	9 5/8	7 7/8	3,278

**Drawer Dimensional Details**

Drawers	Width	Depth	Height	Cu. Inches
1	18	9 3/8	1 1/2	253
1	18	9 3/8	3 1/2	591

**Load Capacity**

Drawer	Type	Each	Total
Friction		60 lbs.	120 lbs.

**Metal Thickness**

Body	Drawers
20 ga.	22 ga.

Model 5150 - 26" 2 Drawer Add-On Base



- Brown Wrinkle Powder Finish
- High Security Tubular Key Locking Mechanisms
- Welded Friction Slides
- Wool Felt-Lined Top Drawer
- Fits under models 526, 52611

**Weight & Model Information**

Model	Color	UPC	Net Wt.	Ship Wt.
5150	Brown	05150	28 lbs.	37 lbs.

**Overall Dimensional Details**

Drawers	Width	Depth	Height	Cu. Inches	
5150	2	26 3/4	12 1/2	9 1/2	3,176

**Drawer Dimensional Details**

Drawers	Width	Depth	Height	Cu. Inches
1	25	10 7/8	2	543
1	25	10 7/8	4 1/8	1,121

**Load Capacity**

Drawer	Type	Each	Total
Friction		60 lbs.	120 lbs.

**Metal Thickness**

Body	Drawers
20 ga.	22 ga.

Model MC28 - 28" 2 Drawer Add-On Base



- Brown Wrinkle Powder Finish
- High Security Tubular Key Locking Mechanisms
- Welded Friction Slides
- Wool Felt-Lined Top Drawer
- Fits under models 526, 52611

**Weight & Model Information**

Model	Color	UPC	Net Wt.	Ship Wt.
MC28	Brown	00005	21 lbs.	23 lbs.

**Overall Dimensional Details**

Drawers	Width	Depth	Height	Cu. Inches	
MC28	2	28 1/8	9 5/8	7 7/8	2,131

**Drawer Dimensional Details**

Drawers	Width	Depth	Height	Cu. Inches
1	24 1/2	9 3/8	1 1/2	344
1	24 1/2	9 3/8	3 1/2	804

**Load Capacity**

Drawer	Type	Each	Total
Friction		60 lbs.	120 lbs.

**Metal Thickness**

Body	Drawers
20 ga.	22 ga.



1939

(September 1) World War Two begins.



Kennedy sales reach \$742,000 with 136 employees and a payroll of \$205,000. Kennedy runs a three shift operation.

1940



## Maintenance Pro™

Specially designed from the wheels up for the maintenance professional, Maintenance Pro™ products feature a full line of chests, roller cabinets, maintenance carts and mobile benches.

### Model 2700MP / 2701MP - 5 Drawer Mechanic's Chest



- High Security Tubular Locks
- Ball-Bearing Drawer Slides
- Powder Coat Paint Finish
- Locking Lid Hinges
- Full-width drawer pulls

#### Weight & Model Information

Model	Color	UPC	Net Wt.	Ship Wt.
2700MP	Yellow	00868	90 lbs.	98 lbs.
2701MP	Blue	00869	90 lbs.	98 lbs.

#### Overall Dimensional Details

	Drawers	Width	Depth	Height	Cu. Inches
2700MP	5	27	18	18 3/8	8,930
2701MP	5	27	18	18 3/8	8,930

#### Drawer Dimensional Details

	Drawers	Width	Depth	Height	Cu. Inches
	4	23	16 1/2	2	3,036
	1	23	16 1/2	4	1,518

#### Load Capacity

	Type	Each	Total
Drawer	Ball-Bearing	120 lbs.	600 lbs.

#### Metal Thickness

	Body	Frame	Drawers
	18 ga.	18 ga.	18 ga.

### Model 3400MP / 3401MP - 5 Drawer Maintenance Chest



- High Security Tubular Locks
- Ball-Bearing Drawer Slides
- Powder Coat Paint Finish
- Locking Lid Hinges
- Full-width drawer pulls

#### Weight & Model Information

Model	Color	UPC	Net Wt.	Ship Wt.
3400MP	Yellow	00870	145 lbs.	156 lbs.
3401MP	Blue	00871	145 lbs.	156 lbs.

#### Overall Dimensional Details

	Drawers	Width	Depth	Height	Cu. Inches
3400MP	5	34	20	18 3/8	12,495
3401MP	5	34	20	18 3/8	12,495

#### Drawer Dimensional Details

	Drawers	Width	Depth	Height	Cu. Inches
	4	30	18 1/2	2	4,440
	1	30	18 1/2	4	2,220

#### Load Capacity

	Type	Each	Total
Drawer	Ball-Bearing	120 lbs.	600 lbs.

#### Metal Thickness

	Body	Frame	Drawers
	18 ga.	18 ga.	18 ga.

### Model 2702MP / 2703MP - 6 Drawer Roller Cabinet



- High Security Tubular Locks
- Ball-Bearing Drawer Slides
- Powder Coat Paint Finish
- Rugged 6"x2" Roller Bearing Casters
- Full-width drawer pulls
- Heavy Top Mat Included
- Compatible w/ models: 2700MP & 2701MP

#### Weight & Model Information

Model	Color	UPC	Net Wt.	Ship Wt.
2702MP	Yellow	00872	140 lbs.	150 lbs.
2703MP	Blue	00873	140 lbs.	150 lbs.

#### Overall Dimensional Details

	Drawers	Width	Depth	Height	Cu. Inches
2702MP	6	27	18	39	18,954
2703MP	6	27	18	39	18,954

#### Drawer Dimensional Details

	Drawers	Width	Depth	Height	Cu. Inches
	1	23	16 1/2	2	759
	4	23	16 1/2	4	6,072
	1	23	16 1/2	10	3,795

#### Load Capacity

	Type	Each	Total
Drawer	Ball-Bearing	120 lbs.	720 lbs.
Casters	6" x 2"	700 lbs.	2,800 lbs.

#### Metal Thickness

	Body	Frame	Drawers
	18 ga.	16 ga.	18 ga.



Plant expansion of 20,000 feet completed.  
Products geared towards war effort with 80% military.

1941

(December 7) Japan surprise attack on Pearl Harbor.

Model 3402MP / 3403MP - 6 Drawer Roller Cabinet



- High Security Tubular Locks
- Ball-Bearing Drawer Slides
- Powder Coat Paint Finish
- Rugged 6"x2" Roller Bearing Casters
- Full-width drawer pulls
- Heavy Top Mat Included
- Compatible w/ models: 3400MP & 3401MP

**Weight & Model Information**

Model	Color	UPC	Net Wt.	Ship Wt.
3402MP	Yellow	00874	221 lbs.	243 lbs.
3403MP	Blue	00875	221 lbs.	243 lbs.

**Overall Dimensional Details**

	Drawers	Width	Depth	Height	Cu. Inches
3402MP	6	34	20	40	27,200
3403MP	6	34	20	40	27,200

**Drawer Dimensional Details**

	Drawers	Width	Depth	Height	Cu. Inches
	1	30	18 1/2	2	1,110
	4	30	18 1/2	4	8,880
	1	30	18 1/2	10	5,550

**Load Capacity**

	Type	Each	Total
Drawer	Ball-Bearing	120 lbs.	900 lbs.
Caster	6" x 2"	700 lbs.	2,800 lbs.

**Metal Thickness**

	Body	Frame	Drawers
	18 ga.	16 ga.	18 ga.

Model 3900MP / 3901MP - 8 Drawer Maintenance Cart



- High Security Tubular Locks
- Ball-Bearing Drawer Slides
- Powder Coat Paint Finish
- Rugged 6"x2" Roller Bearing Casters
- Full-width drawer pulls
- Includes non-slip open weave drawer liners
- Durable, coated MDF work surface protects cabinet top

**Weight & Model Information**

Model	Color	UPC	Net Wt.	Ship Wt.
3900MP	Yellow	00880	225 lbs.	250 lbs.
3901MP	Blue	00881	225 lbs.	250 lbs.

**Overall Dimensional Details**

	Drawers	Width	Depth	Height	Cu. Inches
3900MP	8	39 3/8	20	39	30,713
3901MP	8	39 3/8	20	39	30,713

**Drawer Dimensional Details**

	Drawers	Width	Depth	Height	Cu. Inches
	3	35	18 1/2	2	3,885
	4	35	18 1/2	4	10,360
	1	35	18 1/2	6	3,885

**Load Capacity**

	Type	Each	Total
Drawer	Ball-Bearing	120 lbs.	1,200 lbs.
Caster	6" x 2"	700 lbs.	2,800 lbs.

**Metal Thickness**

	Body	Frame	Drawers
	18 ga.	16 ga.	18 ga.

Model 5300MP / 5301MP - 12 Drawer Maintenance Cart



- High Security Tubular Locks
- Ball-Bearing Drawer Slides
- Powder Coat Paint Finish
- Rugged 6"x2" Roller Bearing Casters
- Full-width drawer pulls
- Includes non-slip open weave drawer liners
- Durable, coated MDF work surface protects cabinet top
- Includes two 10" wheels w/ solid rubber tires on center axle

**Weight & Model Information**

Model	Color	UPC	Net Wt.	Ship Wt.
5300MP	Yellow	00884	283 lbs.	335 lbs.
5301MP	Blue	00885	283 lbs.	335 lbs.

**Overall Dimensional Details**

	Drawers	Width	Depth	Height	Cu. Inches
5300MP	12	53	18	40 1/2	36,637
5301MP	12	53	18	40 1/2	36,637

**Drawer Dimensional Details**

	Drawers	Width	Depth	Height	Cu. Inches
	1	49	16 1/2	4	3,234
	2	23	16 1/2	2	1,518
	3	23	16 1/2	4	4,554
	1	23	16 1/2	6	2,277
	2	23	16 1/2	2	1,518
	2	23	16 1/2	4	3,036
	1	23	16 1/2	10	3,795

**Load Capacity**

	Type	Each	Total
Drawer	Ball-Bearing	120 lbs.	1,800 lbs.
Caster	6" x 2"	700 lbs.	2,800 lbs.
Caster	10" x 2"	500 lbs.	1,000 lbs.

**Metal Thickness**

	Body	Frame	Drawers
	18 ga.	16 ga.	18 ga.



Sales reach \$1,263,000 with 114 employees and a payroll of \$418,000.

1950



Charles F. Kennedy dies and Roger K. Thompson takes over as president. Company continues positive growth.

1951

## Pro-line™ Kennedy



www.kennedymfg.com  
1-800-413-8665

Manufactured with the highest grade of raw materials available, Pro-Line™ Series tool storage are built to work hard for you and last a lifetime. These units are heavy-duty for the industrial environment with features such as the heavy-welded steel construction, ball-bearing drawer slides, heavy-duty roller-bearing casters and an MDF work surface.

### Model 10491 - 39" 7 Drawer Maintenance Cart



- High-Gloss Black Powder Finish
- Heavy-welded Steel Construction
- High-Security Tubular Locking Mechanisms
- Ball-Bearing Drawer Slides
- Heavy-Duty Tubular Side Handles
- Full-width Aluminum Drawer Pulls
- Heavy-Duty Roller-Bearing Casters
- MDF Work Surface
- 6" x 2" Heavy Duty Roller-Bearing Casters

#### Weight & Model Information

Model	Color	UPC	Net Wt.	Ship Wt.
10491	Black	10491	175 lbs.	205 lbs.

#### Overall Dimensional Details

	Drawers	Width	Depth	Height	Cu. Inches
10491	7	39 3/8	18	35	24,806

#### Drawer Dimensional Details

	Drawers	Width	Depth	Height	Cu. Inches
	3	23	16 1/2	2	2,277
	3	23	16 1/2	4	4,554
	1	23	16 1/2	6	2,277
Compartment		10 3/4	18	28	5,418

#### Load Capacity

	Type	Each	Total
Drawer Casters	Ball-Bearing 6" x 2"	120 lbs. 350 lbs.	840 lbs. 1,400 lbs.

#### Metal Thickness

Body	Frame	Drawers
18 ga.	18 ga.	20 ga.

### Model 10492 - 39" 13 Drawer Maintenance Cart



- High-Gloss Black Powder Finish
- Heavy-welded Steel Construction
- High-Security Tubular Locking Mechanisms
- Ball-Bearing Drawer Slides
- Full-width Aluminum Drawer Pulls
- Heavy-Duty Roller-Bearing Casters
- MDF Work Surface
- 6" x 2" Heavy Duty Roller-Bearing Casters

#### Weight & Model Information

Model	Color	UPC	Net Wt.	Ship Wt.
10492	Black	10492	220 lbs.	250 lbs.

#### Overall Dimensional Details

	Drawers	Width	Depth	Height	Cu. Inches
10492	13	39 3/8	18	39	27,641

#### Drawer Dimensional Details

	Drawers	Width	Depth	Height	Cu. Inches
	1	23	16 1/2	2	759
	5	23	16 1/2	4	7,590
	1	23	16 1/2	6	2,277
	1	9 3/4	16 1/2	2	321
	4	9 3/4	16 1/2	4	2,574
	1	9 3/4	16 1/2	10	1,608

#### Load Capacity

	Type	Each	Total
Drawer Casters	Ball-Bearing 6" x 2"	120 lbs. 350 lbs.	1,560 lbs. 1,400 lbs.

#### Metal Thickness

Body	Frame	Drawers
18 ga.	18 ga.	20 ga.

### Model 10493 - 39" 12 Drawer Maintenance Cart



- High-Gloss Black Powder Finish
- Heavy-welded Steel Construction
- High-Security Tubular Locking Mechanisms
- Ball-Bearing Drawer Slides
- Full-width Aluminum Drawer Pulls
- Heavy-Duty Roller-Bearing Casters
- MDF Work Surface
- 6" x 2" Heavy Duty Roller-Bearing Casters

#### Weight & Model Information

Model	Color	UPC	Net Wt.	Ship Wt.
10493	Black	10493	225 lbs.	255 lbs.

#### Overall Dimensional Details

	Drawers	Width	Depth	Height	Cu. Inches
10493	12	39 3/8	18	39	27,641

#### Drawer Dimensional Details

	Drawers	Width	Depth	Height	Cu. Inches
	1	35 1/4	16 1/2	6	3,384
	2	23	16 1/2	2	1,518
	3	23	16 1/2	4	4,554
	1	23	16 1/2	6	2,277
	2	9 3/4	16 1/2	2	643
	2	9 3/4	16 1/2	4	1,287
	1	9 3/4	16 1/2	10	1,608

#### Load Capacity

	Type	Each	Total
Drawer Casters	Ball-Bearing 6" x 2"	120 lbs. 350 lbs.	1,440 lbs. 1,400 lbs.

#### Metal Thickness

Body	Frame	Drawers
18 ga.	18 ga.	20 ga.

Sales reach \$2,037,000 with 120 employees and a payroll of \$645,000. Improvement continues.



1954

USS Nautilus is first nuclear submarine.



1960

Model 10494 - 41" 13 Drawer Maintenance Cart



- High-Gloss Black Powder Finish
- Heavy-welded Steel Construction
- High-Security Tubular Locking Mechanisms
- Ball-Bearing Drawer Slides
- Full-width Aluminum Drawer Pulls
- Heavy-Duty Roller-Bearing Casters
- MDF Work Surface
- 6" x 2" Heavy Duty Roller-Bearing Casters

**Weight & Model Information**

Model	Color	UPC	Net Wt.	Ship Wt.
10494	Black	10494	245 lbs.	275 lbs.

**Overall Dimensional Details**

Drawers	Width	Depth	Height	Cu. Inches	
10494	13	41 3/8	20	42	34,755

**Drawer Dimensional Details**

Drawers	Width	Depth	Height	Cu. Inches
1	25	18 1/2	2	925
5	25	18 1/2	4	9,250
1	25	18 1/2	6	2,775
1	9 3/4	18 1/2	2	360
4	9 3/4	18 1/2	4	2,886
1	9 3/4	18 1/2	10	1,803

**Load Capacity**

Type	Each	Total	
Drawer	Ball-Bearing	120 lbs.	1,560 lbs.
Casters	6" x 2"	900 lbs.	1,400 lbs.

**Metal Thickness**

Body	Frame	Drawers
18 ga.	16 ga.	20 ga.

Model 10495 - 41" 12 Drawer Maintenance Cart



- High-Gloss Black Powder Finish
- Heavy-welded Steel Construction
- High-Security Tubular Locking Mechanisms
- Ball-Bearing Drawer Slides
- Full-width Aluminum Drawer Pulls
- Heavy-Duty Roller-Bearing Casters
- MDF Work Surface
- 6" x 2" Heavy Duty Roller-Bearing Casters

**Weight & Model Information**

Model	Color	UPC	Net Wt.	Ship Wt.
10495	Black	10495	250 lbs.	280 lbs.

**Overall Dimensional Details**

Drawers	Width	Depth	Height	Cu. Inches	
10495	12	41 3/8	20	42	34,755

**Drawer Dimensional Details**

Drawers	Width	Depth	Height	Cu. Inches
1	37 3/4	18 1/2	6	4,190
2	25	18 1/2	2	1,850
3	25	18 1/2	4	5,550
1	25	18 1/2	6	2,775
2	9 3/4	18 1/2	2	721
2	9 3/4	18 1/2	4	1,443
1	9 3/4	18 1/2	10	1,803

**Load Capacity**

Type	Each	Total	
Drawer	Ball-Bearing	120 lbs.	1,440 lbs.
Casters	6" x 2"	900 lbs.	3,600 lbs.

**Metal Thickness**

Body	Frame	Drawers
18 ga.	16 ga.	20 ga.



Plant expansion of 18,000 feet.



1962

Start of the Cuban Missile Crisis.



1963

John F. Kennedy assassinated.



### Industrial Series

Designed for the shop that performs maintenance on heavy equipment, the Industrial Series tool storage line is manufactured to accommodate any heavy duty task.

#### Model 273B- 27" 3 Drawer Roller Cabinet



- Brown Wrinkle Powder Finish
- High Security Tubular Locking Mechanisms w/ Keys
- Snap-In Friction Glides
- Four 5" x 1 1/4" Casters: 2 Swivel, 2 w/ Wheel Brake
- Fold Down Compartment Panel

#### Weight & Model Information

Model	Color	UPC	Net Wt.	Ship Wt.
273B	Brown	00058	99 lbs.	110 lbs.

#### Overall Dimensional Details

	Drawers	Width	Depth	Height	Cu. Inches
273B	3	27	18	35	17,010

#### Drawer Dimensional Details

	Drawers	Width	Depth	Height	Cu. Inches
	2	23	16 1/2	4	3,036
	1	23	16 1/2	6	2,277

#### Load Capacity

	Type	Each	Total
Drawer	Friction	150 lbs.	450 lbs.
Caster	5" x 1 1/4"	200 lbs.	800 lbs.

#### Metal Thickness

	Body	Drawers
	18 ga.	20 ga.

#### Model 275B- 27" 5 Drawer Roller Cabinet



- Brown Wrinkle Powder Finish
- High Security Tubular Locking Mechanisms w/ Keys
- Snap-In Friction Glides
- Four 5" x 1 1/4" Casters: 2 Swivel, 2 w/ Wheel Brake
- Fold Down Compartment Panel

#### Weight & Model Information

Model	Color	UPC	Net Wt.	Ship Wt.
275B	Brown	00060	110 lbs.	121 lbs.

#### Overall Dimensional Details

	Drawers	Width	Depth	Height	Cu. Inches
275B	5	27	18	35	17,010

#### Drawer Dimensional Details

	Drawers	Width	Depth	Height	Cu. Inches
	3	23	16 1/2	2	2,277
	2	23	16 1/2	4	3,036

#### Load Capacity

	Type	Each	Total
Drawer	Friction	150 lbs.	750 lbs.
Caster	5" x 1 1/4"	200 lbs.	800 lbs.

#### Metal Thickness

	Body	Drawers
	18 ga.	20 ga.

#### Model 277B / 277XB - 27" 7 Drawer Roller Cabinet



- Brown Wrinkle Powder Finish
- High Security Tubular Locking Mechanisms w/ Keys
- 277B: Snap-In Friction Glides
- 277XB: Ball-Bearing Drawer Slides
- Four 5" x 1 1/4" Casters: 2 Swivel, 2 w/ Wheel Brake

#### Weight & Model Information

Model	Color	UPC	Net Wt.	Ship Wt.
277B	Brown	00063	127 lbs.	138 lbs.
277XB	Brown	00608	134 lbs.	145 lbs.

#### Overall Dimensional Details

	Drawers	Width	Depth	Height	Cu. Inches
277B	7	27	18	35	17,010
277XB	7	27	18	35	17,010

#### Drawer Dimensional Details

	Drawers	Width	Depth	Height	Cu. Inches
	3	23	16 1/2	2	2,277
	3	23	16 1/2	4	4,554
	1	23	16 1/2	6	2,277

#### Load Capacity

	Type	Each	Total
Drawer	Friction	125 lbs.	875 lbs.
Drawer	Ball-Bearing	120 lbs.	840 lbs.
Caster	5" x 1 1/4"	200 lbs.	800 lbs.

#### Metal Thickness

	Body	Drawers
	18 ga.	20 ga.



Plant expansion of 12,000 feet to enlarge the Press Department.

1966



1969

Apollo project successful; man lands on the moon.

Model 348XB - 34" 8 Drawer Roller Cabinet



- Brown Wrinkle Powder Finish
- High Security Tubular Locking Mechanisms w/ Keys
- Four 5" x 2" Casters: 2 Swivel, 2 w/ Wheel Brake
- Ball-Bearing Drawer Slides
- Compatible w/ 2805 and 2812 chests

**Weight & Model Information**

Model	Color	UPC	Net Wt.	Ship Wt.
348XB	Brown	10165	206 lbs.	228 lbs.

**Overall Dimensional Details**

	Drawers	Width	Depth	Height	Cu. Inches
348XB	8	34	20	40	27,200

**Drawer Dimensional Details**

	Drawers	Width	Depth	Height	Cu. Inches
	3	30	18 1/2	2	3,330
	4	30	18 1/2	4	8,880
	1	30	18 1/2	6	3,330

**Load Capacity**

	Type	Each	Total
Drawer	Ball-Bearing	120 lbs.	960 lbs.
Caster	5" x 2"	350 lbs.	1,400 lbs.

**Metal Thickness**

	Body	Frame	Drawers
	18 ga.	16 ga.	20 ga.

Model 315XB / 315XR - 39" 15 Drawer Maintenance Cart



- Brown Wrinkle Powder Coat or Smooth Red Paint Finish
- High Security Tubular Locking Mechanisms w/ Keys
- Four 5" x 2" Casters: 2 Swivel, 2 w/ Wheel Brake
- Ball-Bearing Drawer Slides
- 39" x 18" Work Surface
- Full-width Drawer Pulls

**Weight & Model Information**

Model	Color	UPC	Net Wt.	Ship Wt.
315XB	Brown	64314	230 lbs.	260 lbs.
315XR	Red	64315	230 lbs.	260 lbs.

**Overall Dimensional Details**

	Drawers	Width	Depth	Height	Cu. Inches
315XB	15	39 3/8	18	39	27,641
315XR	15	39 3/8	18	39	27,641

**Drawer Dimensional Details**

	Drawers	Width	Depth	Height	Cu. Inches
Left Bank	5	23	16 1/2	2	3,795
	3	23	16 1/2	4	4,554
	1	23	16 1/2	6	2,277
Right Bank	2	9 3/4	16 1/2	2	644
	3	9 3/4	16 1/2	4	1,931
	1	9 3/4	16 1/2	12	1,931

**Load Capacity**

	Type	Each	Total
Drawer	Ball-Bearing	120 lbs.	1,800 lbs.
Caster	5" x 2"	350 lbs.	1,400 lbs.

**Metal Thickness**

	Body	Frame	Drawers
	18 ga.	16 ga.	20 ga.

Model 378XB - 27" 8 Drawer Roller Cabinet



- Brown Wrinkle Powder Finish
- High Security Tubular Locking Mechanisms w/ Keys
- Four 5" x 2" Casters: 2 Swivel, 2 w/ Wheel Brake
- Ball-Bearing Drawer Slides

**Weight & Model Information**

Model	Color	UPC	Net Wt.	Ship Wt.
378XB	Brown	00618	154 lbs.	165 lbs.

**Overall Dimensional Details**

	Drawers	Width	Depth	Height	Cu. Inches
378XB	8	27	18	39	18,954

**Drawer Dimensional Details**

	Drawers	Width	Depth	Height	Cu. Inches
	3	23	16 1/2	2	2,277
	4	23	16 1/2	4	6,072
	1	23	16 1/2	6	2,277

**Load Capacity**

	Type	Each	Total
Drawer	Ball-Bearing	120 lbs.	960 lbs.
Caster	5" x 2"	350 lbs.	1,400 lbs.

**Metal Thickness**

	Body	Drawers
	18 ga.	20 ga.

Sales reach \$4,359,000 with 234 employees and a payroll of \$1,715,000. Company builds sales team.

1970

1972

DDT is banned.



Model 295B / 295XB - 29" 5 Drawer Roller Cabinet



- Brown Wrinkle Powder Finish
- 295B: Friction Drawer Slides
- 295XB: Ball-Bearing Drawer Slides
- High Security Tubular Locking Mechanisms w/ Keys
- Four 5" x 2" Casters: 2 Swivel, 2 w/ Wheel Brake
- Fold Down Compartment Panel
- Ball-Bearing Drawer Slides

**Weight & Model Information**

Model	Color	UPC	Net Wt.	Ship Wt.
295B	Brown	00067	128 lbs.	140 lbs.
295XB	Brown	00612	133 lbs.	145 lbs.

**Overall Dimensional Details**

	Drawers	Width	Depth	Height	Cu. Inches
295B	5	29	20	35	20,300
295XB	5	29	20	35	20,300

**Drawer Dimensional Details**

	Drawers	Width	Depth	Height	Cu. Inches
	3	25	18 1/2	2	2,775
	2	25	18 1/2	4	3,700
Compartment		26 1/8	19 3/4	11 1/4	5,805

**Load Capacity**

	Type	Each	Total
Drawer	Ball-Bearing	120 lbs.	600 lbs.
Drawer	Friction	125 lbs.	625 lbs.
Caster	5" x 2"	350 lbs.	1,400 lbs.

**Metal Thickness**

	Body	Drawers
	18 ga.	20 ga.

Model 297B / 297XB - 29" 7 Drawer Roller Cabinet



- Brown Wrinkle Powder Finish
- 297B: Friction Drawer Slides
- 297XB: Ball-Bearing Drawer Slides
- High Security Tubular Locking Mechanisms w/ Keys
- Four 5" x 2" Casters: 2 Swivel, 2 w/ Wheel Brake

**Weight & Model Information**

Model	Color	UPC	Net Wt.	Ship Wt.
297B	Brown	00071	146 lbs.	158 lbs.
297XB	Brown	00614	153 lbs.	165 lbs.

**Overall Dimensional Details**

	Drawers	Width	Depth	Height	Cu. Inches
297B	7	29	20	35	20,300
297XB	7	29	20	35	20,300

**Drawer Dimensional Details**

	Drawers	Width	Depth	Height	Cu. Inches
	3	25	18 1/2	2	2,775
	3	25	18 1/2	4	5,550
	1	25	18 1/2	6	2,775

**Load Capacity**

	Type	Each	Total
Drawer	Ball-Bearing	120 lbs.	840 lbs.
Drawer	Friction	125 lbs.	875 lbs.
Caster	5" x 2"	350 lbs.	1,400 lbs.

**Metal Thickness**

	Body	Drawers
	18 ga.	20 ga.



Plant expansion of 25,000 feet because of increase in roller cabinet sales.

1974



1975

Microsoft founded by Bill Gates.

### Industrial Mobile Versa-Bench® & Versa-Cart® Platform

The Industrial Mobile Versa-Bench® & Versa-Cart® Platform is an ideal organizational unit for any industrial worksite. These units feature many means of storage including drawers, cabinetry and also storage compartments to fit the needs of different equipment. Each unit comes with a standard floor lock for stationary use.



#### Model 4806B - 48" 6 Drawer Industrial Mobile Versa-Bench®



- Brown Wrinkle Powder Finish
- Ball-Bearing Slides on Each Drawer
- Pad Lockable Doors
- Rear doors cover two-shelf storage space and can be pad locked for extra security
- 8" x 2" Roller Bearing Phenolic Wheels
- Add two casters and increase weight capacity to 5,400 lbs. caster capacity
- Drawer units include lock and two keys
- 1/8" Steel Work Surface

#### Weight & Model Information

Model	Color	UPC	Net Wt.	Ship Wt.
4806B	Brown	10128	395 lbs.	425 lbs.

#### Overall Dimensional Details

	Drawers	Width	Depth	Height	Cu. Inches
4806B	6	48	26	35 7/8	44,772

#### Drawer Dimensional Details

	Drawers	Width	Depth	Height	Cu. Inches
	3	23	16 1/2	2	2,277
	2	23	16 1/2	4	3,036
	1	23	16 1/2	5	1,878
Top Front Comp.	17 1/2	19	12 1/8		4,032
Bottom Front Comp.	17 1/2	19	11		3,658
Back Open Shelves	48	5 1/2	13		3,432

#### Load Capacity

	Type	Each	Total
Drawer	Ball-Bearing	125 lbs.	750 lbs.
Caster	8" x 2"	900 lbs.	3,600 lbs.

#### Metal Thickness

	Body	Frame
	11 ga.	11 ga.

#### Model 6006 - 60" 6 Drawer Industrial Mobile Versa-Bench®



- Brown Wrinkle Powder Finish
- Ball-Bearing Slides on Each Drawer
- Pad Lockable Doors
- Rear doors cover two-shelf storage space and can be pad locked for extra security
- 8" x 2" Roller Bearing Phenolic Wheels
- Add two casters and increase weight capacity to 5,400 lbs. caster capacity
- Drawer units include lock and two keys
- 1/8" Steel Work Surface

#### Weight & Model Information

Model	Color	UPC	Net Wt.	Ship Wt.
6006B	Brown	10129	450 lbs.	475 lbs.

#### Overall Dimensional Details

	Drawers	Width	Depth	Height	Cu. Inches
6006B	6	60 7/8	32	35 7/8	69,885

#### Drawer Dimensional Details

	Drawers	Width	Depth	Height	Cu. Inches
	3	23	16 1/2	2	2,277
	2	23	16 1/2	4	3,036
	1	23	16 1/2	5	1,898
Top Front Comp.	27 1/4	28 1/2	12 1/8		9,417
Bottom Front Comp.	27 1/4	28 1/2	11		8,543
Back Open Comp.	28 1/2	9 1/4	26		6,854

#### Load Capacity

	Type	Each	Total
Drawer	Ball-Bearing	125 lbs.	750 lbs.
Caster	8" x 2"	900 lbs.	3,600 lbs.

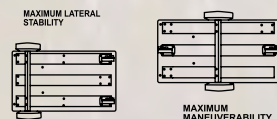
#### Metal Thickness

	Body	Frame
	11 ga.	11 ga.

#### Model 435XB - 5 Drawer Versa-Cart® Platform



- Brown Wrinkle Powder Finish
- 1 1/2" High Sides
- Two ten-inch, ball-bearing wheels with solid rubber tires and two 5 x 2 inch swivel casters with toe locks.
- Use with any 29" Cabinet
- Ball-Bearing Drawer Slides



#### Weight & Model Information

Model	Color	UPC	Net Wt.	Ship Wt.
435XB	Brown	00628	123 lbs.	136 lbs.

#### Overall Dimensional Details

	Drawers	Width	Depth	Height	Cu. Inches
435XB	5	43 1/8	20 1/4	36 1/4	31,656

#### Drawer Dimensional Details

	Drawers	Width	Depth	Height	Cu. Inches
	1	9 3/4	18 1/2	2	361
	3	9 3/4	18 1/2	4	2,165
	1	9 3/4	18 1/2	10	1,804

#### Load Capacity

	Type	Each	Total
Drawer	Ball-Bearing	120 lbs.	600 lbs.
Caster	5" x 2"	300 lbs.	1,200 lbs.
Wheel	10" x 2"	500 lbs.	1,000 lbs.

#### Metal Thickness

	Body	Frame
	16 ga.	16 ga.

Tackle boxes were eliminated since only 3% sales. Chests and Cabinets sold to JC Penney.

1977



1978

Birth of the personal computer.



### Hang-On Cabinets

Kennedy Hang-On Cabinets give added organization to your dynamic roller cabinet. These universal cabinets add even more storage to your rolling cabinet, making it easy to facilitate your worksite.

#### Model 185B - 5 Drawer Hang-On Cabinet



- Brown Wrinkle Powder Finish
- Bolts to Either Side of Your Roller Cabinet
- Fits Kennedy Model 273, 273X, 275, 275X, 277 and 277X
- High Security Tubular Locking Mechanisms w/ Keys
- Friction Drawer Slides

#### Weight & Model Information

Model	Color	UPC	Net Wt.	Ship Wt.
185B	Brown	10406	67 lbs.	71 lbs.

#### Overall Dimensional Details

Drawers	Width	Depth	Height	Cu. Inches	
185B	5	13 5/8	18	29	7,112

#### Drawer Dimensional Details

Drawers	Width	Depth	Height	Cu. Inches
1	9 3/4	16 1/2	2	322
3	9 3/4	16 1/2	4	1,931
1	9 3/4	16 1/2	10	1,609

#### Load Capacity

Type	Each	Total	
Drawer	Friction	125 lbs.	625 lbs.

#### Metal Thickness

Body	Drawers
20 ga.	20 ga.

#### Model 205B - 5 Drawer Hang-On Cabinet



- Brown Wrinkle Powder Finish
- Bolts to Either Side fo Your Roller Cabinet
- Fits Kennedy Model 295, 295X, 297 and 297X
- High Security Tubular Locking Mechanisms w/ Keys
- Friction Drawer Slides

#### Weight & Model Information

Model	Color	UPC	Net Wt.	Ship Wt.
205B	Brown	10408	72 lbs.	77 lbs.

#### Overall Dimensional Details

Drawers	Width	Depth	Height	Cu. Inches	
205B	5	13 5/8	20	29	7,903

#### Drawer Dimensional Details

Drawers	Width	Depth	Height	Cu. Inches
1	9 3/4	18 1/2	2	361
3	9 3/4	18 1/2	4	2,165
1	9 3/4	18 1/2	10	1,804

#### Load Capacity

Type	Each	Total	
Drawer	Friction	125 lbs.	625 lbs.

#### Metal Thickness

Body	Drawers
20 ga.	20 ga.



1979

Cellular phones, Cray supercomputer, walkman invented.



1980

Sales reach \$19,394,000 with a payroll of \$5,000,000.

### Tool Storage Accessories

Replacement and add-on items for your Kennedy tool boxes, chests, roller cabinets and work stations. Some of our most popular tool storage accessories are shown below. For your free copy of our Tool Storage Accessory Catalog, call us today at 1-800-413-8665 or e-mail us at [kmcinfo@kennedymfg.com](mailto:kmcinfo@kennedymfg.com). Visit our website at [www.kennedymfg.com](http://www.kennedymfg.com).



#### Standard Cylinder Lock/Key Sets

- Kennedy uses 350 lock and milled key changes for added tool protection.
- All locks can be keyed alike.



#### Tubular High Security Lock Sets

- Tubular High Security Locks can be found in many coin boxes, vending machines, pay phones, etc. utilized for their dependability.
- Seven pin tumbler cylinder construction.
- All locks can be keyed alike.

#### Multi-Lock Security Lock Bar

- Folds over cabinet drawers and locks with padlock.
- Easily attaches to tool boxes.
- Comes with sheet metal screws and instructions.
- Padlock Not Provided



#### Chest/Cabinet Non-Slip Drawer Liner

- Non-slip, open weave drawer liner keeps tools in place.
- Polyester fabric coated with PVC.
- Washable, anti-fungus and mildew-proof.



#### Chest/Cabinet Foam Drawer Liner

- Helps protect tools from moisture and keeps them in place.
- Polyethylene foam  $\frac{1}{16}$  inches thick.



#### Chest/Cabinet Foam Tool Organizer

- Notice missing tools at a glance.
- $\frac{3}{8}$  thick foam can be cut with a hot pencil-tip smoldering iron.



*\*Tool Storage Accessories are not subject to the Kennedy X Press 3-day shipping program  
Call Kennedy @ 1-800-413-8665 for delivery information.*



Building expansion of additional  
70,000 feet.

1984



1989

Fall of the Berlin Wall.

### Ball-Bearing Drawer Slides

- Three-member, full-extension ball-bearing slides permit effortless, feather-light movement.
- Package includes one left and one right hand slide.



### Cabinet Top Mat

- Protects against scuffs and abrasions.
- Reduces chest movement.
- Black vinyl pre-cut mat .075 inches thick.



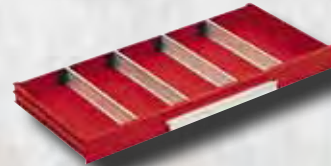
### Maple Work Surface

- 1 1/2" thick butcher block maple top.
- Full-length laminations specially selected for grain and color match.
- Kitchen counter quality for years of fine use.
- Comes with care instructions.



### Drawer Dividers

- Keeps tools separated and organized.
- Fully adjustable. Spring clips hold in place. Made of zinc coated steel.



### ABS Drawer / Divider Inserts for 27", 29" and 34" Roller Cabinets

- Organize, Separate and arrange tools and small parts.
- Maximizes the use of drawer space, giving you quick access to contents.
- No more cluttered, messy drawers.
- ABS Black Plastic
- All compartments have rounded corners for quick, easy retrieval of small parts and easy cleaning.
- One-piece design for 27" and 29" cabinets- easy to use, drop-in and lift out.
- Fits Kennedy 2" and 4" high drawers in both 27" and 29" wide roller cabinets, maintenance cart models 310X and 315X and chest models 2705X & 2905X.



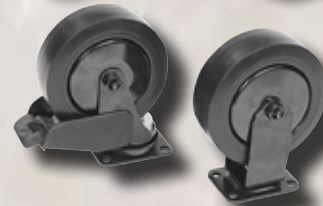
### Roller Cabinet Caster Sets

- Soft rubber tread, hard rubber core bonded to metal center.
- For cabinets that are 20", 27", 29" or 34" wide.



### 6" x 2" Roller Cabinet Caster Set - Molded

- 6" x 2" roller bearing casters made of black polypropylene tread molded to polypropylene core.
- Swivel caster equipped with brake that locks both wheel and swivel.



*\*Tool Storage Accessories are not subject to the Kennedy X Press 3-day shipping program  
Call Kennedy @ 1-800-413-8665 for delivery information.*



1991

Operation Desert Storm occurs to liberate Kuwait from Iraq.

**Toolboard Products - Ideal for Lean and Kaizen Manufacturing**

Professional tool storage that is versatile, convenient, and secure! With reinforced steel panels with square hole perforations and heavy steel lock-on hooks, clips, and accessories, the Kennedy steel toolboard system makes it easy to locate tools at the worksite.



**Model 50102 - Open Tool Trolley**



- Available in High-Gloss Powder Coat Tan Paint Finish
- Double sided w/ inclined panels
- Mounted end handle
- Four 5" x 1 1/4" casters: Two swivel, two w/ wheel brake
- Includes 4 18" x 36" panels and 60-piece toolholder set no. 99853
- Heavy-welded Steel Construction
- Reinforced Steel Panels w/ square hole perforations
- Heavy steel lock-on hooks, clips, and other accessories
- Locate tools at the worksite

**Overall Dimensional Details**

	Drawers	Width	Depth	Height	Cu. Inches
50102	0	36 3/4	27 7/8	51 7/8	53,141

**Load Capacity**

	Type	Each	Total
Casters	5" x 1 1/4"	200 lbs.	800 lbs.

**Metal Thickness**

Body	Frame
18 ga.	18 ga.

**Weight & Model Information**

Model	Color	UPC	Net Wt.	Ship Wt.
50102	Tan	50102	86 lbs.	90 lbs.

**Model 50067 - Two-Panel Toolboard w/ Frame**



- Available in High-Gloss Powder Coat Tan Paint Finish
- Comes with two 18" x 36" reinforced steel pegboard panels with square hole perforations.
- Heavy-welded Steel Construction
- Reinforced Steel Panels w/ square hole perforations
- Pegboard panels are adjustable to the heights you need.
- Heavy steel lock-on hooks, clips, and other accessories
- Locate tools at the worksite

**Overall Dimensional Details**

	Drawers	Width	Depth	Height	Cu. Inches
50067	0	39	24	75	70,200

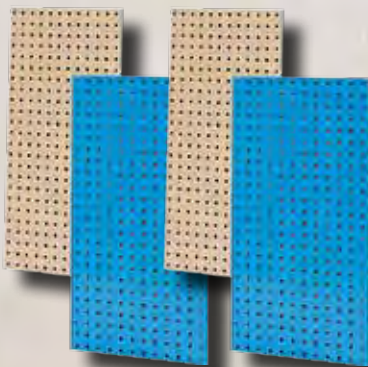
**Metal Thickness**

Body	Frame
18 ga.	18 ga.

**Weight & Model Information**

Model	Color	UPC	Net Wt.	Ship Wt.
50067	Tan	50067	40 lbs.	45 lbs.

**Model 50002 / 50012 - Standard Two-Panel Toolboard Set**



- Available in High-Gloss Powder Coat Blue or Tan Paint Finish
- Can be attached to a variety of surfaces, racks, etc. (Fasteners not included)
- Heavy-welded Steel Construction
- Reinforced Steel Panels w/ square hole perforations
- Heavy steel lock-on hooks, clips, and other accessories
- Locate tools at the worksite

**Overall Dimensional Details**

	Width	Height	Cu. Inches
50002	18	36	648 per panel
50012	18	36	648 per panel

**Metal Thickness**

Body	Frame
20 ga.	20 ga.

**Weight & Model Information**

Model	Color	UPC	Net Wt.	Ship Wt.
50002	Tan	50002	17 lbs.	20 lbs.
50012	Blue	50012	17 lbs.	20 lbs.

Roger Thompson Jr., President and chairman of the board retires as President and his son Dave Thompson takes over.



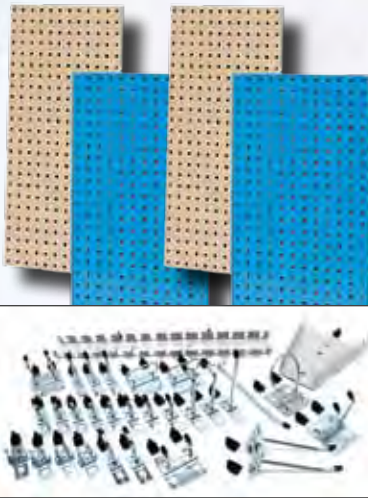
1993

Internet expands with World Wide Web.



1994

**Model 50004 / 50014 - Standard Four-Panel Toolboard Set**



- Available in High-Gloss Powder Coat Blue or Tan Paint Finish
- The standard set consists of four 18 x 36" panels (covers 18 sq. ft. of wall space).
- Can be attached to a variety of surfaces, racks, etc. (Fasteners not included)
- Heavy-welded Steel Construction
- Reinforced Steel Panels w/ square hole perforations
- Heavy steel lock-on hooks, clips, and other accessories
- Locate tools at the worksite
- 60-piece toolholder set included

**Overall Dimensional Details**

	Width	Height	Cu. Inches
50004	18	36	648 per panel
50014	18	36	648 per panel

**Metal Thickness**

Body	Frame
18 ga.	18 ga.

**Weight & Model Information**

Model	Color	UPC	Net Wt.	Ship Wt.
50004	Tan	50004	42 lbs.	45 lbs.
50014	Blue	50014	42 lbs.	45 lbs.

**Toolboard Accessories**

Hooks, clips, and toolholder accessories are industrial grade, zinc-plated heavy steel and lock on to panels to prevent the accidental removal of tools. Bright, zinc-plated heavy steel toolholders won't come off when tools are removed. Positive-lock system secures toolholders in place anywhere on panels.

**Model 99852: 30 Piece Toolholder Set**

- 17 Assorted Single Hooks
- 4 Assorted Double Hooks
- 2 Assorted Plier Hooks
- 4 Assorted Spring Clips
- 1 Ring Hook, Screwdriver Unit and Wrench Rack



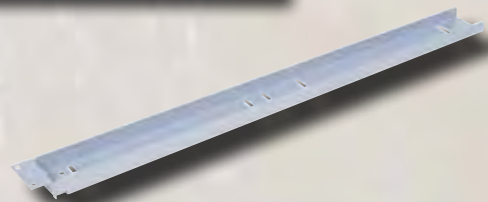
**Model 99853: 60 Piece Toolholder Set**

- 33 Assorted Single Hooks
- 9 Assorted Double Hooks
- 4 Assorted Plier Hooks
- 10 Assorted Spring Clips
- 1 Ring Hook, Screwdriver Unit, Wrench Rack & Allen Key Unit



**Model 50050: Panel Brace Supports**

- Braces attach to work station, louvered or toolboard panels.
- Two brace supports are required per two panel set.
- Model 50050 includes one brace and mounting hardware.



Sales of \$35,660,424 with the approval of several new products.

1995

### The CutterKart™

CutterKarts™ are an efficient means of transporting tools between machining centers and tool rooms. Tooling is contained within the side walls, protecting both the tooling and the operation. Pre-configured CutterKarts™ come with four metal and ABS plastic tool holder plates.



#### Model 73240 - The CutterKart™



- Available in High-Gloss Powder Coat Blue Paint Finish
- Model # 73240 holds up to 56 #40 taper tools
- Comes w/ two 5" x 2" roller bearing casters
- Heavy Welded Steel Construction

#### Weight & Model Information

Model	Color	UPC	Net Wt.	Ship Wt.
73240	Blue	73240	81 lbs.	86 lbs.

#### Overall Dimensional Details

	Trays	Width	Depth	Height	Cu. Inches
73240	4	29	24	38	26,448

#### Tray Dimensional Details

	Trays	Width	Depth	Height	Cu. Inches
	4	24	10 1/4	-	984

#### Load Capacity

	Type	Each	Total
Caster	5" x 2"	300 lbs.	1,200 lbs.

#### Metal Thickness

End Panels	Bottom	Frame
16 ga.	16 ga.	16 ga.

#### Model 73250 - The CutterKart™



- Available in High-Gloss Powder Coat Blue Paint Finish
- Model # 73250 holds up to 40 #50 taper tools
- Comes w/ two 5" x 2" roller bearing casters
- Heavy Welded Steel Construction

#### Weight & Model Information

Model	Color	UPC	Net Wt.	Ship Wt.
73250	Blue	73250	81 lbs.	86 lbs.

#### Overall Dimensional Details

	Trays	Width	Depth	Height	Cu. Inches
73240	4	29	24	38	26,448

#### Tray Dimensional Details

	Trays	Width	Depth	Height	Cu. Inches
	4	24	10 1/4	-	984

#### Load Capacity

	Type	Each	Total
Caster	5" x 2"	300 lbs.	1,200 lbs.

#### Metal Thickness

End Panels	Bottom	Frame
16 ga.	16 ga.	16 ga.



1998

Bill Clinton is impeached.



**HMS™ Series "Hybrid Modular Storage"**

The Kennedy Hybrid Modular Storage System combines the economy of roller cabinet constructions with modular cabinet features.



[www.kennedymfg.com](http://www.kennedymfg.com)  
1-800-413-8665

**Model 40095 - 5 Drawer HMS Mobile Modular Storage**



- Available in Textured Powder Coat Paint Finish
- Ball-Bearing Drawer Slides
- One Drawer Open-At-A-Time Safety System
- MDF Work Surface
- Flexible Drawer Divider System
- Stationary and Mobile Models
- Lockable Drawer Divider Sets Available
- Affordable / Perfect for Using at Your Machining Center

**Weight & Model Information**

Model	Color	UPC	Net Wt.	Ship Wt.
40095	Tan	40095	140 lbs.	164 lbs.

**Overall Dimensional Details**

Drawers	Width	Depth	Height	Cu. Inches	
40095	5	29	20	28	16,240

**Drawer Dimensional Details**

Drawers	Width	Depth	Height	Cu. Inches
2	25	18 1/2	4	3,700
2	25	18 1/2	6	5,550
1	25	18 1/2	8	3,700

**Load Capacity**

Type	Each	Total
4" Drawer	Ball-Bearing 130 lbs.	260 lbs.
6" Drawer	Ball-Bearing 220 lbs.	440 lbs.
8" Drawer	Ball-Bearing 220 lbs.	220 lbs.

**Metal Thickness**

Body	Frame	Drawers
18 ga.	12 ga.	18 ga.

**Model 40096 - 6 Drawer HMS Mobile Modular Storage**



- Available in Textured Powder Coat Paint Finish
- Ball-Bearing Drawer Slides
- One Drawer Open-At-A-Time Safety System
- MDF Work Surface
- Flexible Drawer Divider System
- Stationary and Mobile Models
- Lockable Drawer Divider Sets Available
- Affordable / Perfect for Using at Your Machining Center

**Weight & Model Information**

Model	Color	UPC	Net Wt.	Ship Wt.
40096	Blue	40096	140 lbs.	164 lbs.

**Overall Dimensional Details**

Drawers	Width	Depth	Height	Cu. Inches	
40096	6	29	20	28	16,240

**Drawer Dimensional Details**

Drawers	Width	Depth	Height	Cu. Inches
4	25	18 1/2	4	7,400
2	25	18 1/2	6	2,775

**Load Capacity**

Type	Each	Total
4" Drawer	Ball-Bearing 130 lbs.	520 lbs.
6" Drawer	Ball-Bearing 220 lbs.	440 lbs.

**Metal Thickness**

Body	Frame	Drawers
18 ga.	12 ga.	18 ga.

**Model 40097 - 7 Drawer HMS Mobile Modular Storage**



- Available in Textured Powder Coat Paint Finish
- Ball-Bearing Drawer Slides
- One Drawer Open-At-A-Time Safety System
- MDF Work Surface
- Flexible Drawer Divider System
- Stationary and Mobile Models
- Lockable Drawer Divider Sets Available
- Affordable / Perfect for Using at Your Machining Center

**Weight & Model Information**

Model	Color	UPC	Net Wt.	Ship Wt.
40097	Tan	40097	140 lbs.	164 lbs.

**Overall Dimensional Details**

Drawers	Width	Depth	Height	Cu. Inches	
40097	7	29	20	28	16,240

**Drawer Dimensional Details**

Drawers	Width	Depth	Height	Cu. Inches
7	25	18 1/2	4	12,950

**Load Capacity**

Type	Each	Total
4" Drawer	Ball-Bearing 130 lbs.	910 lbs.

**Metal Thickness**

Body	Frame	Drawers
18 ga.	12 ga.	18 ga.



Sales reach \$39,844,745.

2000



2001

September 11 terror attack against America.

### 30" x 30" Standard Cabinet

This quality, cost-efficient alternative in modular storage include features such as high volume/weight capacity, quality drawer construction, heavy-duty full extension drawers, changeable drawer fronts, drawer interlock system, corner strengthening bracket, security locking system, cabinet top mats and powder coat paint finish.



#### Model 63621 FX - 10 Drawer Standard Width Modular Cabinet



- Available in Tan Powder Coat Finish
- Drawer pans of all cabinets are formed from heavy gauge steel
- Drawer divider sets available
- Changeable Drawer Fronts
- Ball-Bearing rail construction ensures smooth, effortless operation, even when a drawer is fully loaded
- Drawer Interlock Safety System
- Corner Strengthening Bracket
- Includes ribbed black vinyl mat
- Full-Length Label Holders for Drawers
- Flat Key Locking System w/ 2 Keys

#### Overall Dimensional Details

	Drawers	Width	Depth	Height	Cu. Inches
63621	10	30	30	59 1/2	53,550

#### Drawer Dimensional Details

	Drawers	Width	Depth	Height	Cu. Inches
	2	26	26	3	4,056
	2	26	26	4	5,408
	1	26	26	5	3,380
	3	26	26	6	12,168
	1	26	26	8	5,408
	1	26	26	10	6,760

#### Load Capacity

	Type	Each	Total
Drawer	Full-Extension	550 lbs.	5,500 lbs.

#### Metal Thickness

Body	Drawers
18 ga.	18 ga.

#### Weight & Model Information

Model	Color	UPC	Net Wt.	Ship Wt.
63621	Tan	63621	446 lbs.	491 lbs.

### COUNTER HEIGHT CABINETS (40" HIGH)

#### Model 63406 - 8 Drawer 30" x 30" Modular Cabinet



- Available in Textured Powder Coat Paint Finish
- Ball-Bearing Drawer Slides
- One Drawer Open-At-A-Time Safety System
- Lock w/ Keys
- 100% Rail Extension
- Flexible Drawer Divider System

#### Overall Dimensional Details

	Drawers	Width	Depth	Height	Cu. Inches
63406	8	30	30	40	36,000

#### Drawer Dimensional Details

	Drawers	Width	Depth	Height	Cu. Inches
	4	26	26	3	8,112
	1	26	26	4	2,704
	2	26	26	6	8,112
	1	26	26	8	5,408

#### Load Capacity

	Type	Each	Total
Drawer	Ball-Bearing	550 lbs.	4,400 lbs.

#### Metal Thickness

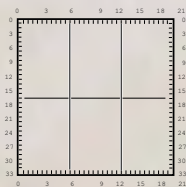
Body	Drawers
18 ga.	18 ga.

#### Weight & Model Information

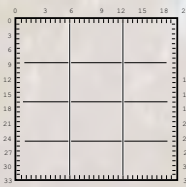
Model	Color	UPC	Net Wt.	Ship Wt.
63406	Tan	63406	355 lbs.	380 lbs.

### Drawer Divider Sets for 30" x 30" Cabinets

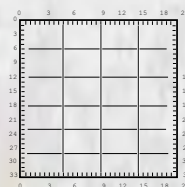
Choose any divider or box set below that meets your needs. To order, use the four digit number and add the number 2, 3 or 4 as a suffix. To order a divider set 9323 for a 2" drawer, order 93232, 93233 for a 3" drawer and 93234 for 4"-16" drawers, etc. Taller subdividers and partitions are available on request.



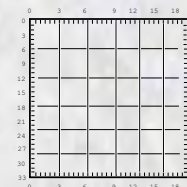
**9321**  
6 Comp.  
8.5" x 13"



**9323**  
12 Comp.  
8.5" x 6.25"



**9335**  
24 Comp.  
6" x 3.75"



**9355**  
36 Comp.  
3.75" x 3.75"



**2002**

U.N. Security Council passes resolution demanding Iraq to disarm.

### 24" x 24" Machine or Base Cabinet

At 24" wide x 24" deep, this cabinet offers you high density storage where weight load requirements are less and space is at a premium, and is designed to store machine tools at the job site while using a small amount of floor space.



www.kennedymfg.com  
1-800-413-8665

#### Model 61303 - 5 Standard Width Modular Cabinet



- Available in Textured Powder Coat Paint Finish
- Ball-Bearing Drawer Slides
- One Drawer Open-At-A-Time Safety System
- Lock w/ Keys
- Protective Top Mat
- Flexible Drawer Divider System

#### Overall Dimensional Details

	Drawers	Width	Depth	Height	Cu. Inches
61303	5	24	24	32	16,128

#### Drawer Dimensional Details

	Drawers	Width	Depth	Height	Cu. Inches
	2	20.5	20.5	4	3,362
	2	20.5	20.5	6	5,043
	1	20.5	20.5	8	3,362

#### Load Capacity

	Type	Each	Total
Drawer	Ball-Bearing	220 lbs.	1,100 lbs.

#### Weight & Model Information

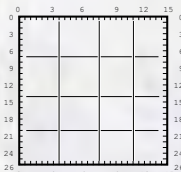
Model	Color	UPC	Net Wt.	Ship Wt.
61303	Tan	61303	146 lbs.	166 lbs.

#### Metal Thickness

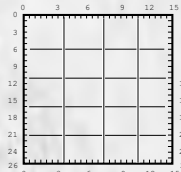
Body	Drawers
18 ga.	18 ga.

#### Drawer Divider Sets for 24" x 24" Cabinets

Choose any divider set below that meets your needs. For additional drawer sets, see you Kennedy full-line catalog.



**91334**  
16 Comp.  
4.75" x 4.75"



**91344**  
20 Comp.  
4.75" x 3.75"



Kennedy Manufacturing maintains its positive growth and quality products with a reliable work force.

**2007**



**2008**

Barack Obama is first African-American president elect.

Since 1911  
**Kennedy**<sup>®</sup>  
USA MADE CHESTS AND CABINETS

**KENNEDY**  
**X**PRESS

A1023 0309

**1-800-413-8665**