



America's Premier
Industrial Tool Storage

Roller Cabinets and Carts

Mechanics Chests

Machinists Chests

Hand-Carry Toolboxes

Versatile Benches

Heavy Duty Workstations

Toolboard Storage System

Modular Cabinets

CNC Tool Storage Equipment

Service Shop Equipment

Accessories



About Lean Manufacturing

What is 5S ?

5S is the process of creating a clutter-free workplace with visual controls through five steps. The English translation for the Japanese terms for 5S are:

- Sort (Organize Workplace)
- Simplify (Cleanup Clutter)
- Sweep (Housekeeping)
- Standardize Procedures
- Sustain Improvements

What does it do?

5S teaches employees to work in teams, establishes discipline, and motivates workers by quickly producing very visible benefits in the form of a cleaner and well-organized shop floor...an important first step toward identifying and eliminating waste in the workplace – the essence of Lean Manufacturing.

How does Kennedy help with 5S programs?

Kennedy provides unique products designed to store parts, bins, or tools for visual control in either a stationary or mobile application. Whether organizing the tools to perform the proper task or parts for quick identification, Kennedy products are designed to make the workplace organization more effective.

See page 8 for our Kennedy Quick Response Program: Your source for fast turnaround and expert advice!



The Kennedy Toolboard Storage System (TBS System) comprises toolboard storage products developed for visual organization and storage of tools and parts used at the worksite or the work cell. These products provide versatile, convenient, and secure storage of a multitude of tools and small parts routinely used in manufacturing assembly or repair stations. The Kennedy TBS product features and benefits support and enable Lean Manufacturing and 5S practices in the workplace.

Key System Features:

- **Flexibility.** Large variety of hooks, clips, and bracket components that allow the user to organize frequently used tools and parts.
- **Safety.** Components lock into the perforated panel thus providing a firm, secure, and safe means of hanging and supporting tools and parts.
- **Convenience and Reusability.** The locking mechanism (patent-pending) provides a simple and quick way of locking-on and removing the hooks, clips, and brackets for easy repositioning.
- **Modularity.** Panels provide a modular structure for expanding the toolboard area on various wall or cabinet surfaces.
- **Durability.** Made of heavy steel or aluminum extruded components for heavy industrial and commercial use.
- **Security.** Locking cabinets, wall units, and mobile cribs provide tool security and visual control.

Key Benefits:

- **Visual Control** - You know if a tool is missing.
- **Safety and Ease of Use** – Lock-On feature prevents accidental hook detachment and falling tools.
- **Flexible Organization Layout** – Change your layout as your needs change.
- **Productivity** - Tool and parts organization as well as operational proximity minimize unnecessary human movement and motion.
- **Mobility** – Bring your organized tools and parts to the work site.

Kennedy Method of Securing Hooks and Brackets onto the Toolboard

The patent-pending Kennedy locking clip method of retaining hooks onto the toolboard uses a specially- designed plastic clip that acts as a locking and retention device for hooks and other utility brackets. The plastic locking clip provides positive radial retention of a hook bracket onto the toolboard. The retention is achieved through the use of a tab feature on the plastic clip that mates with the detent feature of the hook bracket.

Benefits

The benefits of securing the hooks onto the toolboard using the Kennedy locking clip are:

Safety: Prevents one or more hooks and tools from falling off when a user removes a tool from the board, or when a tool or the board is accidentally bumped.

Convenience: The Kennedy locking clip is designed to be installed or uninstalled using either fingers or a straight-edge screwdriver. No special tool is required. A 45° rotation is all that is needed to lock or unlock the clip. This way, you can redesign the layout of your toolboard in minutes without any special effort.

Mobility: Security for mobile applications becomes even more important because of the typical travel bumping action.



Kennedy locking clip - front



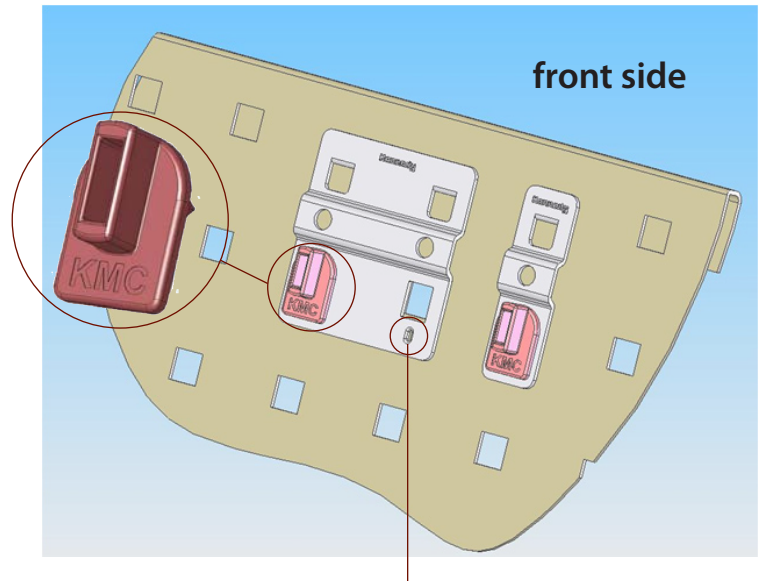
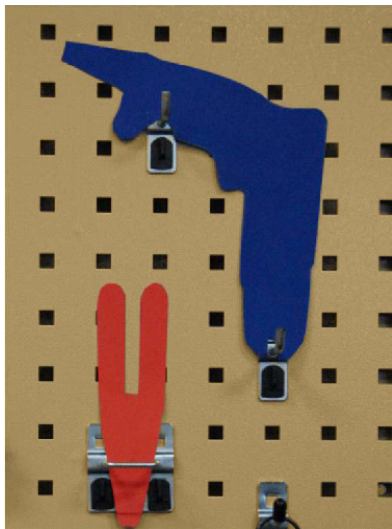
Kennedy locking clip - rear

Indentation on the surface of the back plate allows the plastic locking device's detent to "lock" into position.

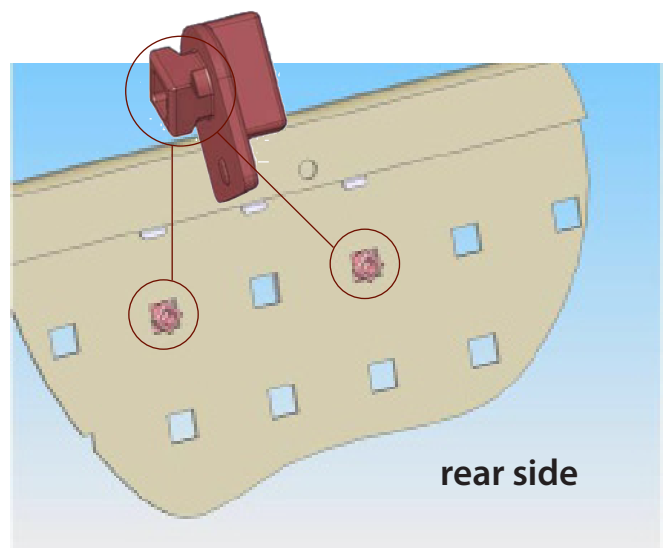
The toolboard system that works for you - at all times... as your needs change



The Kennedy locking clip mechanism provides a simple and quick way of securing or removing hooks, clips, and brackets for easy repositioning.



Bracket indent accepts the Kennedy locking clip's detent to "lock" clip into position.

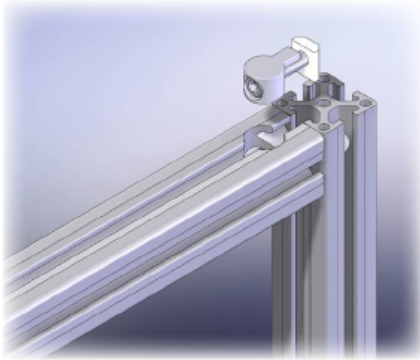
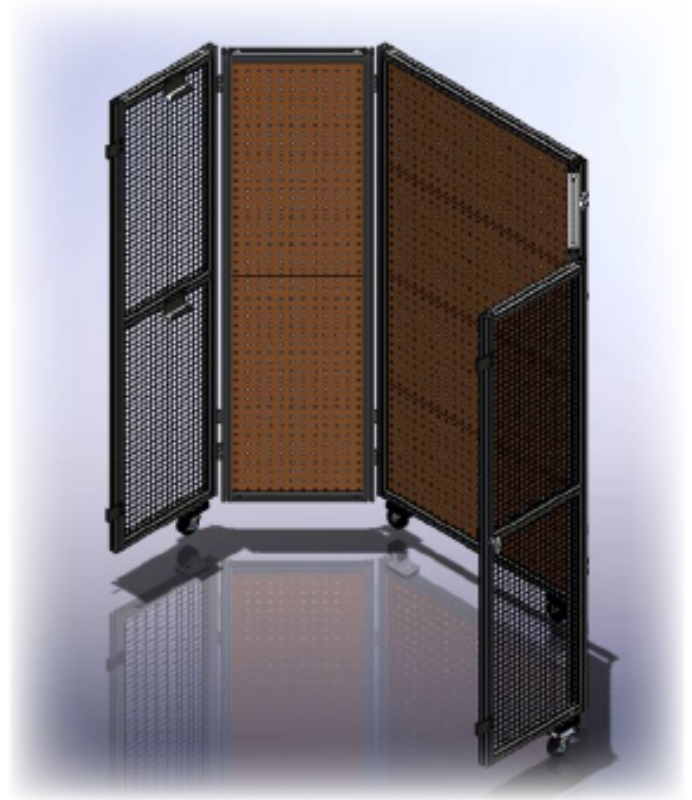


With its low-profile design, the Kennedy locking clip can be used on either side of the double-sided toolboard, without interference from opposing clips.

Stands and Cribs

Modular, Flexible, Easy to Assemble!

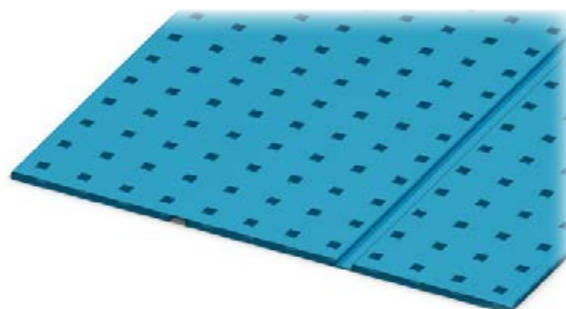
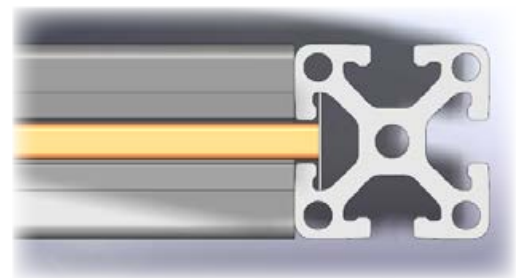
These new toolboard stands and cribs are engineered using a combination of Kennedy square hole toolboard panels with a 1 ½" x 1 ½" aluminum profile frame.



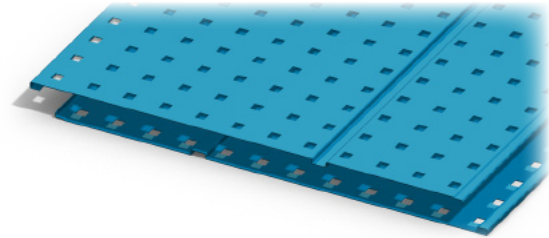
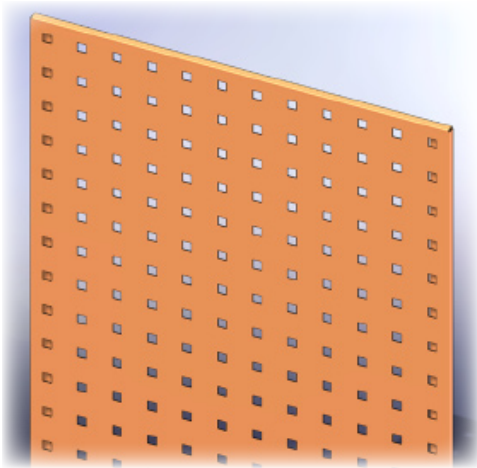
The aluminum profile sections

are user-assembled using industry-standard anchor fasteners. This method of assembly is very simple and gives the user significant flexibility to mix-and-match any components or adjust the panel height .

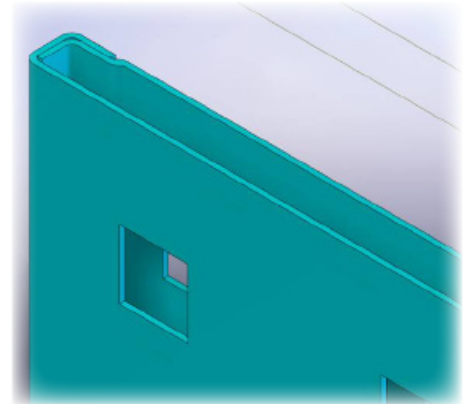
The toolboard panels are designed to fit in the standard aluminum profile slot which contains a fine steel strip that acts as a spring for a snug fit. All panels have the same dimension: 18" x 36" with a 0.30" profile depth that fits the aluminum profile slot width.



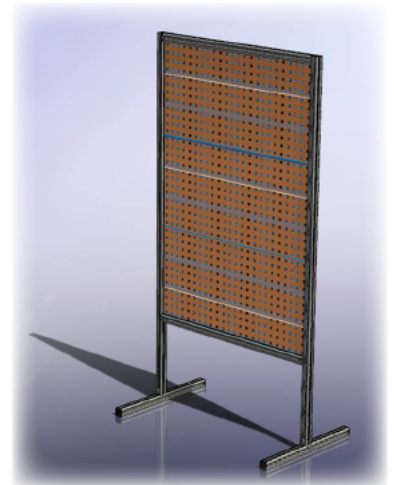
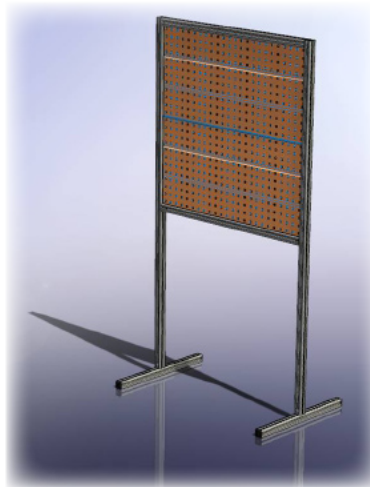
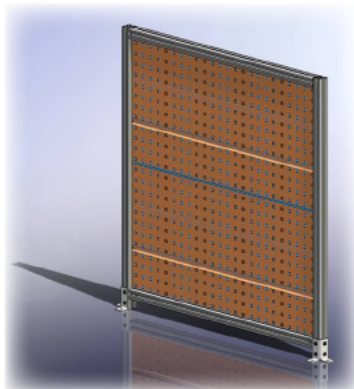
Single-sided panels are rib-reinforced for extra rigidity.

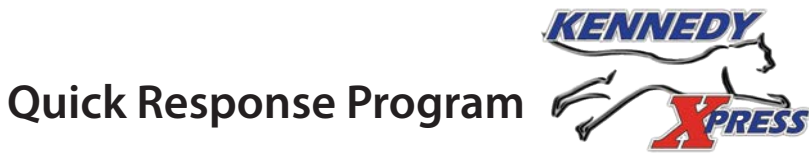


Double-sided panels are designed as two separate interlocking panels that slide into one another.



The aluminum frame comprises 1 ½" x 1 ½" standard aluminum profile sections which are pre-cut and come with the required industry-standard anchor fasteners. The 6160 aluminum frame provides exceptional strength, yet is light-weight and maneuverable.





Are you under the gun to implement a Lean Manufacturing program on your floor?

If so, take advantage of the Kennedy Quick Response Program designed for quick order turnaround and, if needed, expert advice. Under this program, the following items are typically stocked in tan color and ship within 3 business days:

- Wall Panel Sets (see pages 11,12)
- 30-Piece and 60-Piece Toolholder Sets (see page 23)
- Toolholder Accessories (see pages 25-27)
- Toolboard Trolley (see page 17)
- Single-Sided Toolboard Panels (see page 18)
- Double-Sided Toolboard Panels (see page 18)
- Toolboard Stands (see pages 19-21)
- Mobile Toolboard Crib (see page 22)

Kennedy technical experts are available to help you design and implement your 5S/Lean requirements in your manufacturing facility at no extra cost.

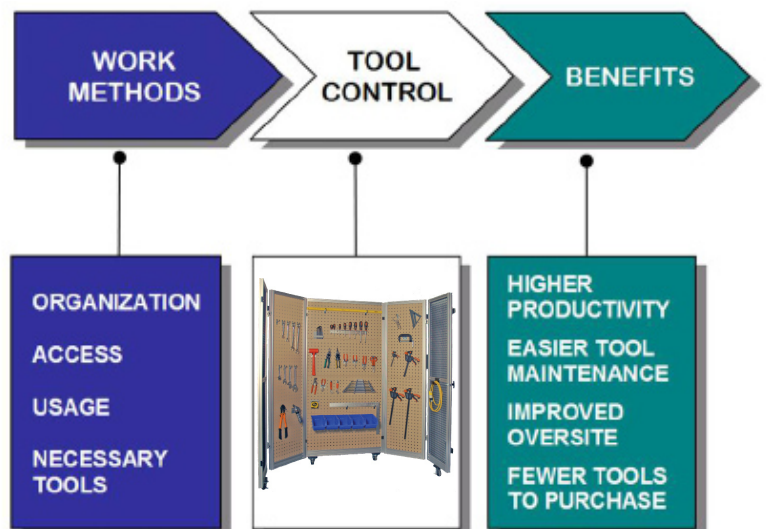
Lean Manufacturing . . . 5S . . . Tool Control

Tool Control promotes the logical organization, easy access, and usage of necessary tools. The key benefits are:

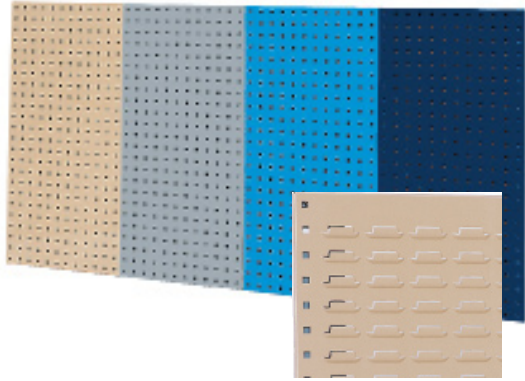
High Productivity due to work area proximity and easier tool maintenance.

Better oversight of tools - fewer tools are lost or misplaced . . .

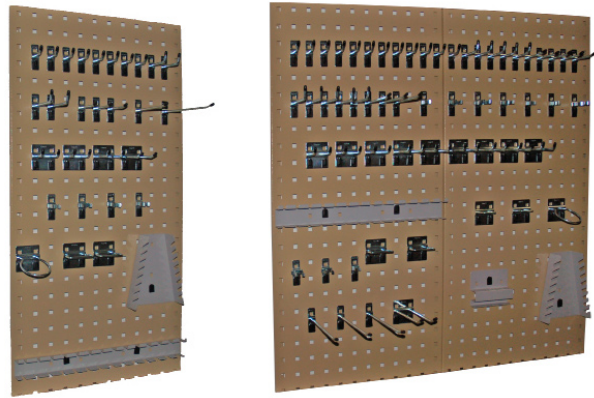
. . . fewer tools to purchase.



Quick Response Program



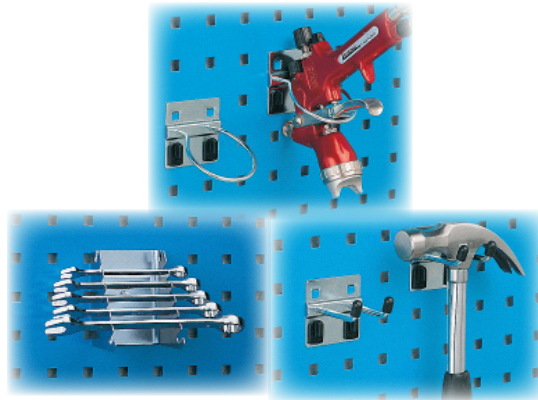
square peg or louvered panels, pgs 11-12



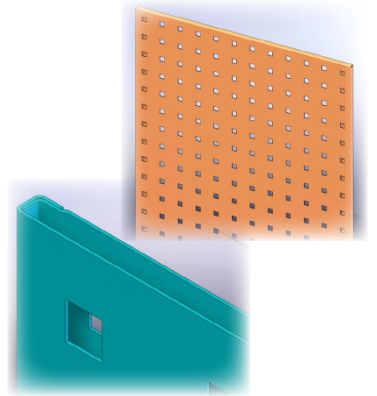
30-piece and 60-piece toolholder sets, pg 23



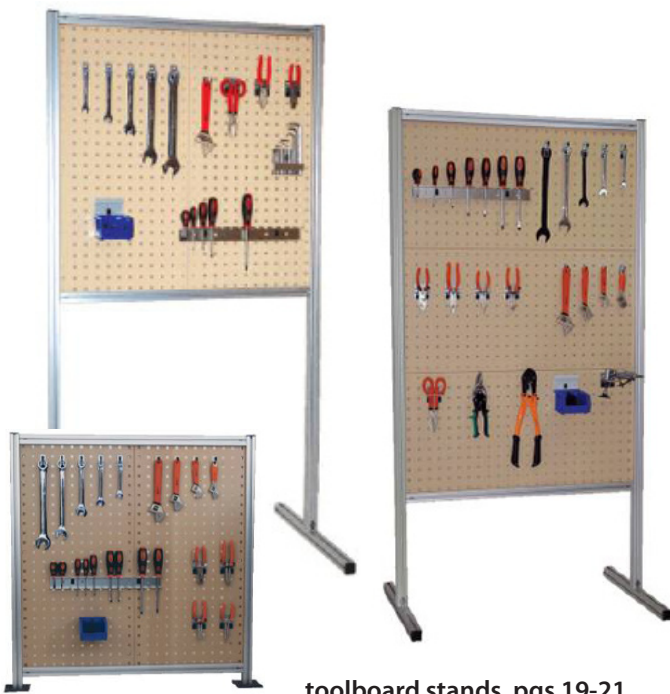
toolboard trolley, pg 17



toolholder accessories, pgs 25-27



single- or double-sided toolboard panels, pg 18



toolboard stands, pgs 19-21



mobile toolboard crib, pg 22

Tools not included

Contents

| | |
|--|-----------|
| 1. Perforated Steel Panels | 11 |
| Square Hole Panel Sets | 11 |
| Louvered Panel Sets..... | 12 |
| Bench-Mounting Panel Brace Supports | 13 |
| 2. Toolboard Cabinets | 14 |
| All Welded Storage Cabinet | 14 |
| Mini Workshop Cabinet..... | 15 |
| Wall-Mounted Cabinet | 16 |
| 3. Toolboard Trolley | 17 |
| 4. Toolboard Stands (Single-Sided and Double-Sided) | 18 |
| Two Panel Toolboard Stand: Single- and Double-Sided | 19 |
| Three Panel Toolboard Stand: Single- and Double-Sided | 20 |
| Benchmount Toolboard Stand: Single- and Double-Sided..... | 21 |
| 5. Mobile Toolboard Crib | 22 |
| 6. Toolholders, Hooks, and Accessories | 23 |
| 30-Piece Toolholder Set..... | 23 |
| 60-Piece Toolholder Set..... | 23 |
| Hooks and Clips..... | 25 |
| Mobility Kits..... | 28 |
| Crib Handle | 29 |
| Accessories..... | 29 |

Toolboard Panels

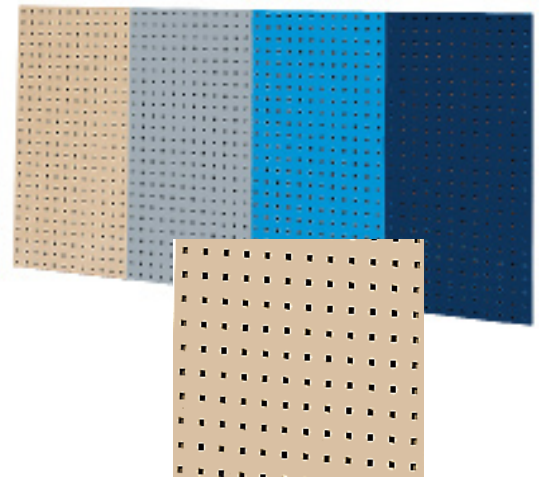
Quick visual and safe access to tools – lets you visually control tools, parts, accessories, supplies, or bins. Can be mounted quickly and easily on any wall and in any panel configuration. Can also be trolley- or bench-mounted.

Square Hole Panel Sets (Models 50002 and 50004)



- Panel dimensions: 18" x 36"
- Standard two-panel set consists of two 18" x 36" panels (9 sq. ft.)
- Standard four-panel set consists of four 18" x 36" panels (18 sq. ft.). 60-Piece toolholder set (see page 23) included with four-panel set. **Tools not included.**
- High quality reinforced steel panel with square hole perforations
- Panels have a durable, chip-resistant coating
- Panels can be mounted in any direction

| Panel Set | Color | UPC No. |
|-----------|--------------|---------|
| 2-Panel | Utility Tan | 50002 |
| 2-Panel | Utility Gray | 50022 |
| 2-Panel | Utility Blue | 50012 |
| 2-Panel | Classic Blue | 50042 |



| Panel Set and Accessories | Color | UPC No. |
|--------------------------------|--------------|---------|
| 4-Panel w/60 pc toolholder set | Utility Tan | 50004 |
| 4-Panel w/60 pc toolholder set | Utility Gray | 50024 |
| 4-Panel w/60 pc toolholder set | Utility Blue | 50014 |
| 4-Panel w/60 pc toolholder set | Classic Blue | 50044 |



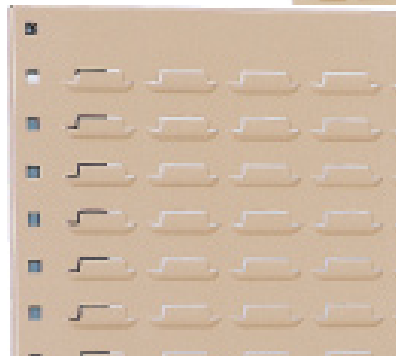
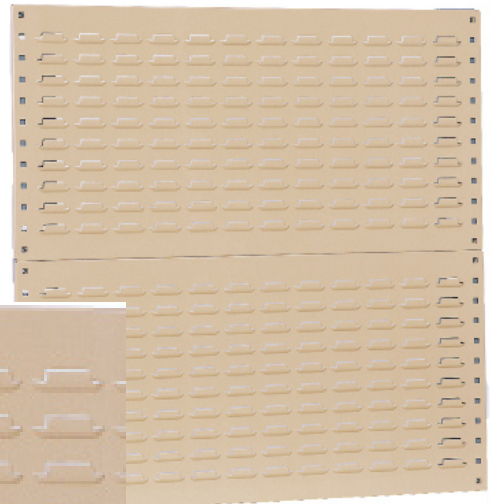
Toolboard Panels, continued

Louvered Panel Sets (Model 50061)



Louvered panels offer quick visual and safe access to a wide variety of industry-standard bins. Effortlessly organize and control parts, supplies, accessories, and small tools. Can be mounted quickly and easily on any wall and in any panel configuration. Can also be trolley-mounted or bench-mounted.

- Panel dimensions: 18" x 36"
- Standard set contains two 18" x 36" panels (9 sq.ft.)
- High quality reinforced steel panel with louvered perforations
- Panels have a durable, chip-resistant coating
- 160 lb. weight capacity per panel
- Accepts industry-standard plastic bins (see page 29)



| Louvered Set | Color | UPC No. |
|--------------|--------------|---------|
| 2-Panel | Utility Tan | 50061 |
| 2-Panel | Utility Gray | 50063 |
| 2-Panel | Utility Blue | 50062 |
| 2-Panel | Classic Blue | 50060 |



Toolboard Trolley sold separately, see page 17. Accommodates 4 louvered or square-peg panels.

Bench-Mounting Panel Brace Supports (Model 50050)

A convenient way to mount toolboard panels onto your workstation surface.



- Model 50050 includes one brace and mounting hardware
- Support Braces are used to mount toolboard and/or louvered panels to workstations
- Two Support Braces are required per two-panel set



Two brace supports with louvered panel set.



Two brace supports with toolboard panel set.



Workstation with panel set, two braces, and hooks *(sold separately)*.
Tools not included.

All Welded Storage Cabinet (Model 10350)

Rugged storage cabinet designed to hold heavy items and take the abuse of an industrial environment.

- Overall dimensions: 39 ¼" W x 13 ¼" D x 76" H
- Three 36" x 21" x 1 ¾" shelves hold 400 lbs. each
- Heavy 16-gauge steel
- Maximum security with three-point locking system
- Full-length toolboard panels on inner doors
- Net Wt. 405 lbs. Ship Wt. 430 lbs.



All Welded Storage Cabinet

| Model No. | Color |
|-----------|--------------|
| 10350 | Utility Tan |
| 10354 | Utility Gray |
| 10353 | Utility Blue |
| 10357 | Classic Blue |



Toolhooks sold separately, see pages 23-27.

Mini Workshop Cabinet (Model 50301)

Designed for use in industrial areas where a secure workstation is needed. Offers shelf, drawer, and toolboard storage, plus a large work surface area.

- Overall dimensions: 39 1/4"W x 23 1/4"D x 76"H
- Three full-width drawers: 34 5/8" x 17 3/8" x 4" with 165 lb. capacity glide on steel roller bearings. Drawers may be divided (See accessories)
- One adjustable full-width shelf: 35 7/8" x 19 5/8" with 220 lb. capacity
- Two 18" X 36" toolboard panels installed on cabinet back
- 36" x 20" x 1 1/2" thick butcher-block maple worksurface
- Full-length toolboard panels on inner doors
- Heavy-gauge welded steel
- Three-point locking doors
- Safety latches on drawers. Easy pull drawer handles with label holders
- 60-Piece toolholder set included (see page 23)
- Net weight 463 lbs.



Mini Workshop Cabinet

| Model No. | Color |
|-----------|--------------|
| 50301 | Utility Tan |
| 50303 | Utility Gray |
| 50302 | Utility Blue |
| 50305 | Classic Blue |



Tools not included

Wall-Mounted Cabinet (Models 50260 and 50230)

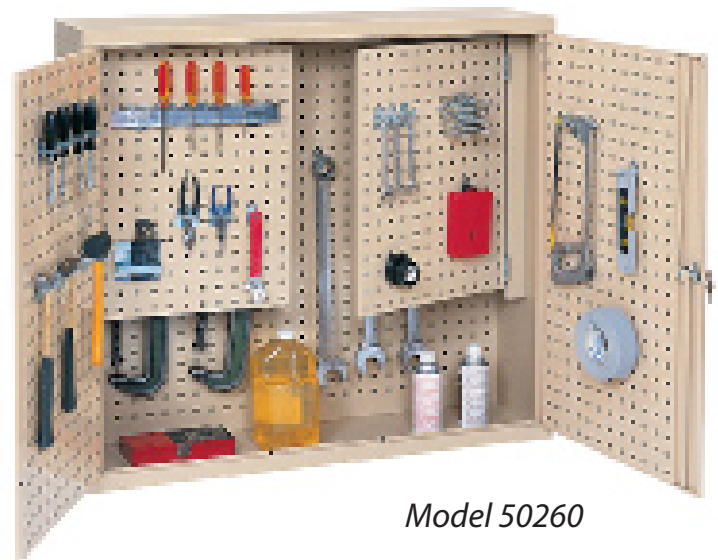
Ruggedly constructed steel cabinets with three-point locking doors combine easy access and convenient tool storage with security. Square hole perforated cabinet back and inner door panels give large tool hanging capacity.

- Overall dimensions: 44 9/16" W x 11 13/16" D x 39 3/8" H
- Comes with 24"x18" swing-out inner panels for additional storage of flat tools
- 60-Piece toolholder set included
- Ship weight 100 lbs. Net weight 83 lbs.

Model 50230 (not shown) comes without swing-out panels and includes a 30-piece toolholder set.

Wall-Mounted Cabinet Without Swing-out Panels

| Model No. | Color |
|-----------|--------------|
| 50230 | Utility Tan |
| 51230 | Utility Gray |
| 52230 | Utility Blue |
| 54230 | Classic Blue |



Model 50260

Tools not included

Wall-Mounted Cabinet With Swing-out Panels

| Model No. | Color |
|-----------|--------------|
| 50260 | Utility Tan |
| 51260 | Utility Gray |
| 52260 | Utility Blue |
| 54260 | Classic Blue |





Toolboard Trolley (Models 50100 and 50102)

Sturdy and easy to maneuver, this steel trolley is double-sided with inclined panels to ensure tools are safely stowed while the trolley is moving. The base has raised edges for easy storage of larger items.

- Overall dimensions: 36 3/4" W x 23 7/8" D x 51 7/8" H
- Mounted end handle and four 5" x 1 1/4" casters allow for easy maneuverability
- Includes four 18" x 36" square hole toolboard panels
- Can mix and match with louvered panels (purchased separately)
- Net weight 86 lbs.



Model 50100

Tools not included



Model 50102

Trolley Base Without Panels

| Model No. | Color |
|-----------|--------------|
| 50100 | Utility Tan |
| 50111 | Utility Gray |
| 50112 | Utility Blue |
| 50114 | Classic Blue |

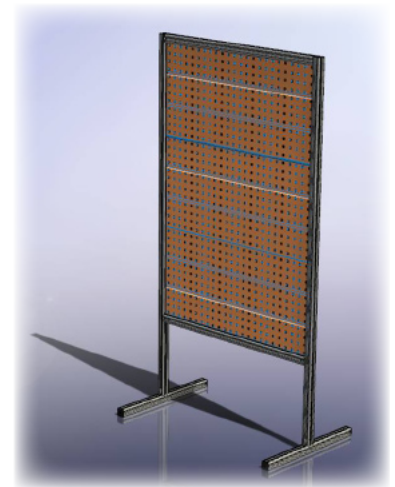
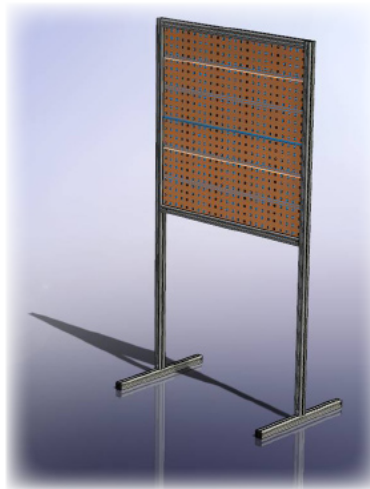
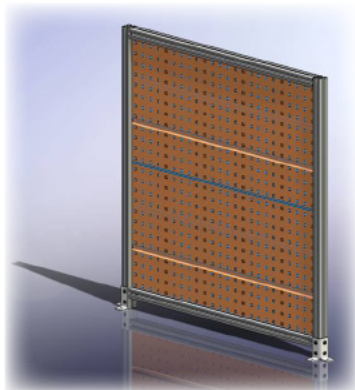
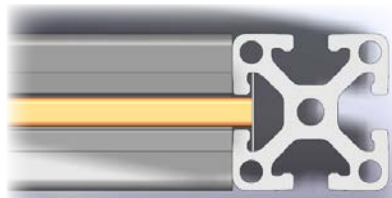
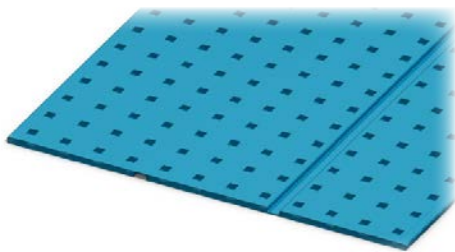
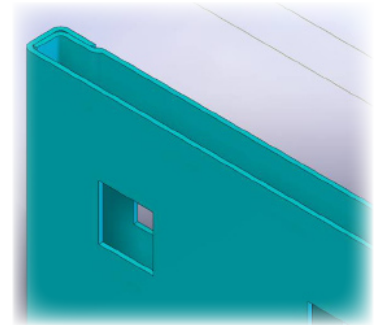
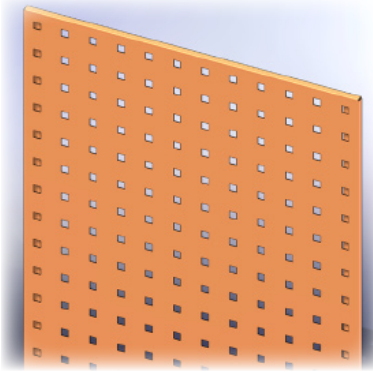
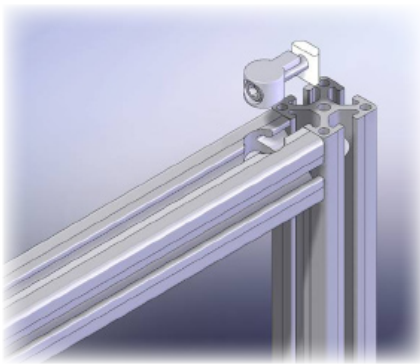
Trolley Base with 4 Square Hole Panels

| Model No. | Color |
|-----------|--------------|
| 50102 | Utility Tan |
| 51102 | Utility Gray |
| 52102 | Utility Blue |
| 54102 | Classic Blue |



Toolboard Stands

Toolboard stands and cribs accommodate either single-sided or double-sided square hole panels. The depth of either panel is designed to fit in the standard aluminum profile slot. Double-sided panels allow the user to hang tools on both the front and back of the stand or crib wall. Kennedy locking clips can be used concurrently on both sides of double-sided toolboards without interference from the opposing side.



Two Panel Single-Sided or Double-Sided Toolboard Frame

(Models 50067 and 50167)



- Dimensions: 39"W x 24"D x 75"H
- 3" x 1 1/4" or 5" x 1 1/4" mobility kit with mounting brackets and hardware optional
- Two 18" x 36" reinforced steel pegboard panels with square hole perforations
- Pegboard panels are adjustable to the height you need. Simply slide the panels and top rail to the height you need and fasten in place
- Secure tools with our heavy-duty steel toolholders (sold separately)
- Kennedy locking clips secure toolholders firmly in place
- Assembly required

Two Panel Single-Sided Toolboard Stand

| Model No. | Color |
|-----------|--------------|
| 50067 | Utility Tan |
| 51067 | Utility Gray |
| 52067 | Utility Blue |
| 54067 | Classic Blue |

Two Panel Double-Sided Toolboard Stand

| Model No. | Color |
|-----------|--------------|
| 50167 | Utility Tan |
| 51167 | Utility Gray |
| 52167 | Utility Blue |
| 54167 | Classic Blue |



Shown with optional mobility kit.

Tools not included.

Double-sided toolboards let you hang tools from both sides of the panel. The low-profile plastic Kennedy locking clip lets you position tools wherever you want.

Three Panel Single-Sided or Double-Sided Toolboard Frame

(Models 50068 and 50168)



- Dimensions: 39"W x 24"D x 75"H
- Three 18" x 36" reinforced steel pegboard panels with square hole perforations
- 50% more storage than two-panel model
- 3" x 1 1/4" or 5" x 1 1/4" optional mobility kit with mounting brackets and hardware
- Secure tools with our heavy-duty steel toolholders (sold separately)
- Kennedy locking clips secure toolholders in place
- Assembly required

Three Panel Single-Sided Toolboard Stand

| Model No. | Color |
|-----------|--------------|
| 50068 | Utility Tan |
| 51068 | Utility Gray |
| 52068 | Utility Blue |
| 54068 | Classic Blue |

Three Panel Double-Sided Toolboard Stand

| Model No. | Color |
|-----------|--------------|
| 50168 | Utility Tan |
| 51168 | Utility Gray |
| 52168 | Utility Blue |
| 54168 | Classic Blue |



Tools not included



Two Panel Single-Sided or Double-Sided Toolboard Benchmount

(Models 50070 and 50170)



- Dimensions: 39"W x 1 ½"D x 40"H
- Two 18" x 36" reinforced steel pegboard panels with square hole perforations
- Attaches to any work surface with mounting brackets and hardware (included)
- Secure tools with our heavy-duty steel toolholders (sold separately)
- Kennedy locking clips secure toolholders in place
- Assembly required

Two Panel Single-Sided Benchmount Stand

| Model No. | Color |
|-----------|--------------|
| 50070 | Utility Tan |
| 51070 | Utility Gray |
| 52070 | Utility Blue |
| 54070 | Classic Blue |

Two Panel Double-Sided Benchmount Stand

| Model No. | Color |
|-----------|--------------|
| 50170 | Utility Tan |
| 51170 | Utility Gray |
| 52170 | Utility Blue |
| 54170 | Classic Blue |



Tools not included

Double-sided toolboards let you hang tools from both sides of the panel. The low-profile plastic Kennedy locking clip lets you position tools wherever you want.



Mobile Toolboard Crib (Model 50084)

The ultimate combination of visual tool control, security, and mobility. This mobile crib unfolds for easy access and folds with locking front panels.

- Dimensions: 39"W x 20"D x 77"H
- Comes with eight 18" x 36" reinforced steel square-hole pegboard panels perforations on back and sides
- Heavy wire mesh front panels
- Secures with locking doors that swing-out for full view and access to tools
- Swing stops on inner panel for vertical stability
- Secure tools with our heavy-duty steel toolholders (sold separately)
- Kennedy locking clips secure toolholders in place
- Includes 3" x 1 1/4" mobility kit
- Assembly required



Tools not included. Assembly required.

Mobile Toolboard Crib

| Model No. | Color |
|-----------|--------------|
| 50084 | Utility Tan |
| 51084 | Utility Gray |
| 52084 | Utility Blue |
| 54084 | Classic Blue |



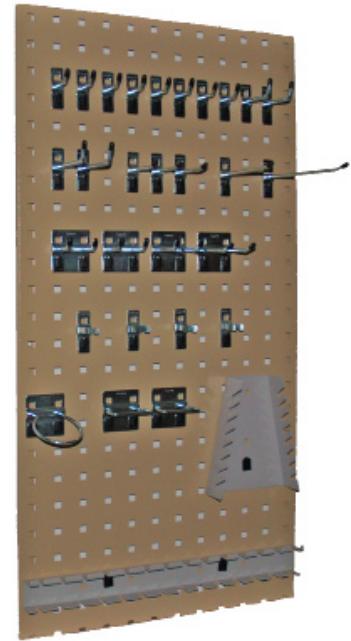
Toolholder Sets

Hooks, clips, and other accessories are industrial grade zinc-plated steel and lock solidly onto panels using locking clips.

30-Piece Toolholder Set (Model 99852)



- 17 assorted single hooks
- 4 assorted double hooks
- 4 assorted spring clips
- 2 assorted plier hooks
- 1 ring hook
- 1 screwdriver unit
- 1 wrench rack



60-Piece Toolholder Set (Model 99853)



- 33 assorted single hooks
- 10 assorted spring clips
- 9 assorted double hooks
- 4 assorted plier hooks
- 1 ring hook
- 1 screwdriver unit
- 1 wrench rack
- 1 allen key unit



Hanging Organizational Bags

Bags hang for additional tool storage. Great for transporting all tools to workstation or repair site in one easy trip.

16" x 24" Toolboard Storage Bag (Model 50052)

- Dimensions: 16"W x 24"H
- Has 5 net pockets for storage
- 12 hand-tool loops
- Mounts onto Kennedy toolholder hooks



16" x 12" Toolboard Storage Bag (Model 50051)

- Dimensions: 16"W x 12"H
- Has 8 pockets for storage
- Each pocket has an additional clear storage pocket on the front
- Mounts onto Kennedy toolholder hooks



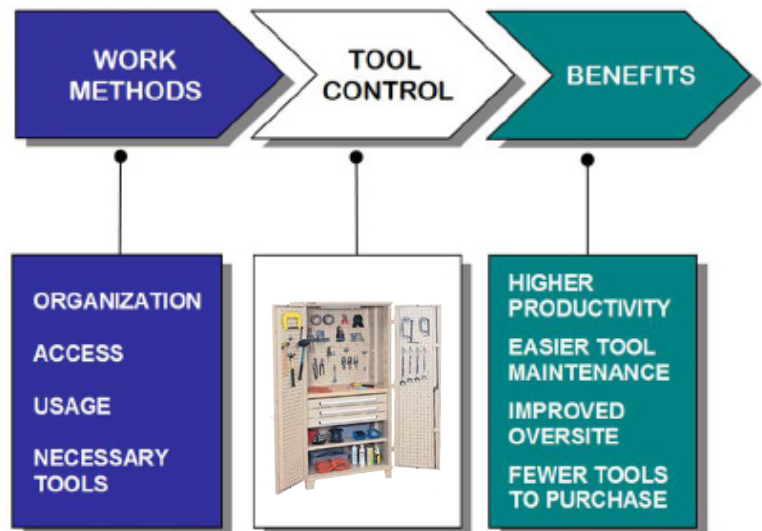
Lean Manufacturing . . . 5S . . . Tool Control

Tool Control promotes the logical organization, easy access, and usage of necessary tools. The key benefits are:

High Productivity due to work area proximity and easier tool maintenance.

Better oversight of tools - fewer tools are lost or misplaced . . .

. . . fewer tools to purchase.



Hooks and Clips

Large variety of hooks and brackets for hanging tools, supplies and accessories. All use the unique Kennedy locking system. See hook and clip specifications for available dimensions.

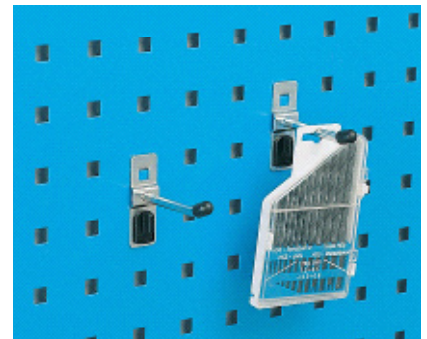
Single Hook – Vertical End

| UPC | Pkg Qty | Length | Dia | Wt Cap |
|-------|---------|--------|-----|---------|
| 99820 | 10 | 1" | ¼" | 40 lbs. |
| 99821 | 10 | 2" | ¼" | 40 lbs. |
| 99822 | 10 | 3" | ¼" | 40 lbs. |



Single Hook – Angled End

| UPC | Pkg Qty | Length | Dia | Wt Cap |
|-------|---------|--------|-----|---------|
| 99823 | 10 | 2 3/8" | ¼" | 40 lbs. |
| 99824 | 10 | 4" | ¼" | 40 lbs. |
| 99825 | 10 | 6" | ¼" | 40 lbs. |



Double Hook – Vertical End

| UPC | Pkg Qty. | Length | Width | Wt Cap |
|-------|----------|--------|--------|---------|
| 99827 | 10 | 1" | 1 1/2" | 40 lbs. |
| 99828 | 10 | 2" | 1 1/2" | 40 lbs. |



Double Hook – Angled End

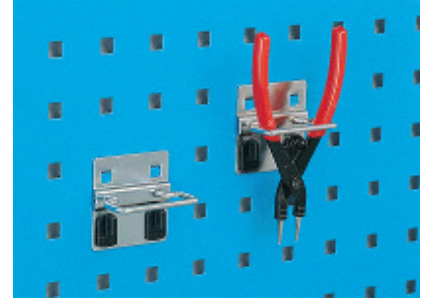
| UPC | Pkg Qty. | Length | Width | Wt Cap |
|-------|----------|--------|--------|---------|
| 99829 | 10 | 2" | 1 1/2" | 40 lbs. |
| 99830 | 10 | 4" | 1 1/2" | 40 lbs. |



Hooks and Clips

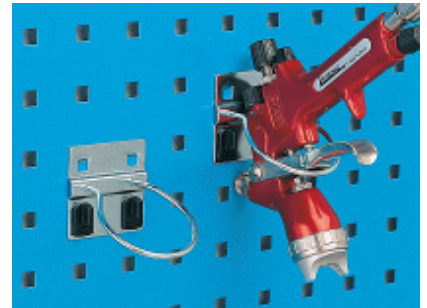
Plier Hook

| UPC | Pkg Qty. | Length | Depth | Wt Cap |
|-------|----------|--------|-------|---------|
| 99831 | 10 | 1 1/4" | 3/4" | 40 lbs. |
| 99832 | 10 | 2 1/8" | 3/4" | 40 lbs. |



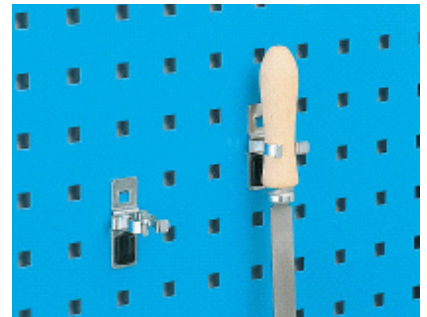
Ring Hook

| UPC | Pkg Qty. | Length | Diam | Wt Cap |
|-------|----------|--------|--------|---------|
| 99839 | 2 | --- | 2 3/8" | 40 lbs. |



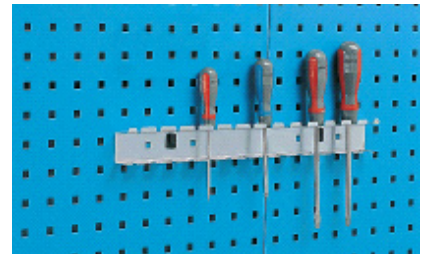
Single Spring Clips

| UPC | Pkg Qty. | Length | Diam | Wt Cap |
|-------|----------|--------|------|--------|
| 99833 | 10 | 2" | 1/2" | 3 lbs. |
| 99835 | 10 | 2" | 3/4" | 3 lbs. |
| 99836 | 10 | 2" | 1" | 3 lbs. |



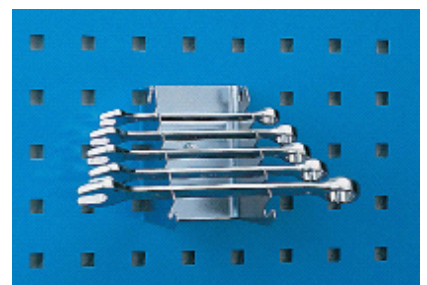
Screwdriver Unit

| UPC | Pkg Qty. | Length | Depth | Wt Cap |
|-------|----------|---------|----------|---------|
| 99840 | 1 | 17 3/4" | 1 15/16" | 40 lbs. |



Wrench Rack

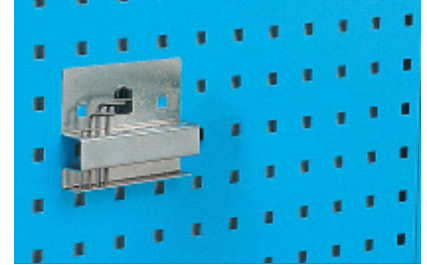
| UPC | Pkg Qty. | Length | Depth | Wt Cap |
|-------|----------|----------|---------|---------|
| 99841 | 1 | 6 15/16" | 5 9/16" | 40 lbs. |



Hooks and Clips

10-Piece Allen Key Unit

| UPC | Pkg Qty. | Length | Depth | Wt Cap |
|-------|----------|--------|-------|--------|
| 99842 | 1 | 4 1/2" | 1" | 3 lbs. |



Parts Shelf

| UPC | Pkg Qty. | Length | Depth | Wt Cap |
|-------|----------|---------|--------|---------|
| 99846 | 1 | 17 3/4" | 6 3/4" | 40 lbs. |



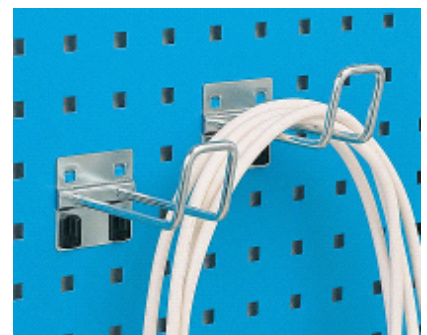
Plastic Bin Storage Strip

| UPC | Pkg Qty. | Length | Depth | Wt Cap |
|-------|----------|---------|-------|---------|
| 99847 | 1 | 4" | 3/4" | 40 lbs. |
| 99848 | 1 | 17 3/4" | 3/4" | 40 lbs. |



Cable Loop Hook Set

| UPC | Pkg Qty. | Length | Depth | Wt Cap |
|-------|----------|--------|--------|---------|
| 99876 | 5 | 6" | 5 3/4" | 20 lbs. |



Mobility Kits (Models 50083 and 50081)

3" x 1 1/4" or 5" x 1 1/4" caster mobility kit sets with mounting brackets for use with toolboard stands, mobile toolboard cribs, and toolboard trolleys. The 3" x 1 1/4" size should be sufficient for most applications. Select the 5" x 1 1/4" size for rough floors, greater clearance, or when heavy travel is anticipated.



Model 50083: 3" x 1 1/4" Mobile Package

For Models 50100, 50102, 50067, 50167, 50068, 50168, 50084

Includes 2 rigid, 2 swivel, mounting plates, hardware

Model 50081: 5" x 1 1/4" Mobile Package

For Models 50100, 50102, 50067, 50167, 50068, 50168, 50084

Includes 2 rigid, 2 swivel, mounting plates, hardware



Push/Pull Handle (Model 50053)

Plastic push handle and mounting accessories let you position the handle at any height across the aluminum profile channel or a steel surface using metal screws.



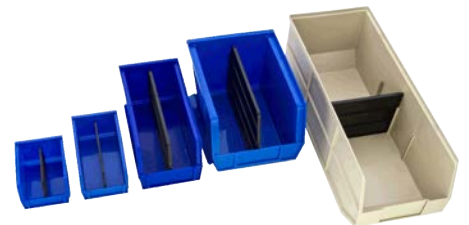
Accessories

Comprehensive accessories offered by Kennedy Manufacturing. See the Kennedy Tool Storage Accessory Catalog or the Kennedy website, www.kennedymfg.com, for the full product line.

Including . . .

Plastic Bins

For use with the louvered panels. Refer to the Kennedy Accessories Catalog for bin sizes and color options.



Chest/Cabinet Foam Tool Organizer

Maintain order and track your tools effortlessly with our foam tool organizer. Place tools on the 3/8" thick foam and trace around them with a hot pencil tip soldering iron. Remove cutout and place tool in drawer well.



Toolboard Storage System Index

| Model/ UPC # | Description | Page |
|-----------------|---|------|
| 50002 | 2-panel square hole panelset (utility tan) | 11 |
| 50022 | 2-panel square hole panelset (utility gray) | 11 |
| 50012 | 2-panel square hole panelset (utility blue) | 11 |
| 50042 | 2-panel square hole panelset (classic blue) | 11 |
| 50004 | 2-panel square hole panelset w/60-piece toolholder set (utility tan) | 11 |
| 50024 | 4-panel square hole panelset w/60-piece toolholder set (utility gray) | 11 |
| 50014 | 4-panel square hole panelset w/60-piece toolholder set (utility blue) | 11 |
| 50044 | 4-panel square hole panelset w/60-piece toolholder set (classic blue) | 11 |
| 50061 | 2-panel louvered panel set (utility tan) | 12 |
| 50063 | 2-panel louvered panel set (utility gray) | 12 |
| 50062 | 2-panel louvered panel set (utility blue) | 12 |
| 50060 | 2-panel louvered panel set (classic blue) | 12 |
| 50050 | Bench-mounting panel bracesupport | 13 |
| 10350 | All welded storage cabinet (utility tan) | 14 |
| 10354 | All welded storage cabinet (utility gray) | 14 |
| 10353 | All welded storage cabinet (utility blue) | 14 |
| 10357 | All welded storage cabinet (classic blue) | 14 |
| 50301 | Mini workshop cabinet (utility tan) | 15 |
| 50303 | Mini workshop cabinet (utility gray) | 15 |
| 50302 | Mini workshop cabinet (utility blue) | 15 |
| 50305 | Mini workshop cabinet (classic blue) | 15 |
| 50230 | Wall-mounted cabinet without swing-out panels (utility tan) | 16 |
| 51230 | Wall-mounted cabinet without swing-out panels (utility gray) | 16 |
| 52230 | Wall-mounted cabinet without swing-out panels (utility blue) | 16 |
| 54230 | Wall-mounted cabinet without swing-out panels (classic blue) | 16 |
| 50260 | Wall-mounted cabinet with swing-out panels (utility tan) | 16 |
| 51260 | Wall-mounted cabinet with swing-out panels (utility gray) | 16 |
| 52260 | Wall-mounted cabinet with swing-out panels (utility blue) | 16 |
| 54260 | Wall-mounted cabinet with swing-out panels (classic blue) | 16 |
| 50100 | Trolley base without panels (utility tan) | 17 |
| 50111 | Trolley base without panels (utility gray) | 17 |
| 50113 | Trolley base without panels (utility blue) | 17 |
| 50114 | Trolley base without panels (classic blue) | 17 |
| 50102 | Trolley base with 4 square-hole panels (utility tan) | 17 |
| 51102 | Trolley base with 4 square-hole panels (utility gray) | 17 |
| 52102 | Trolley base with 4 square-hole panels (utility blue) | 17 |
| 54102 | Trolley base with 4 square-hole panels (classic blue) | 17 |
| 50067 | 2-panel single-sided toolboard stand (utility tan) | 19 |
| 51067 | 2-panel single-sided toolboard stand (utility gray) | 19 |
| 52067 | 2-panel single-sided toolboard stand (utility blue) | 19 |
| 54067 | 2-panel single-sided toolboard stand (classic blue) | 19 |
| 50167 | 2-panel double-sided toolboard stand (utility tan) | 19 |
| 51167 | 2-panel double-sided toolboard stand (utility gray) | 19 |
| 52167 | 2-panel double-sided toolboard stand (utility blue) | 19 |
| 54167 | 2-panel double-sided toolboard stand (classic blue) | 19 |
| 50068 | 3-panel single-sided toolboard stand (utility tan) | 20 |
| 51068 | 3-panel single-sided toolboard stand (utility gray) | 20 |
| 52068 | 3-panel single-sided toolboard stand (utility blue) | 20 |

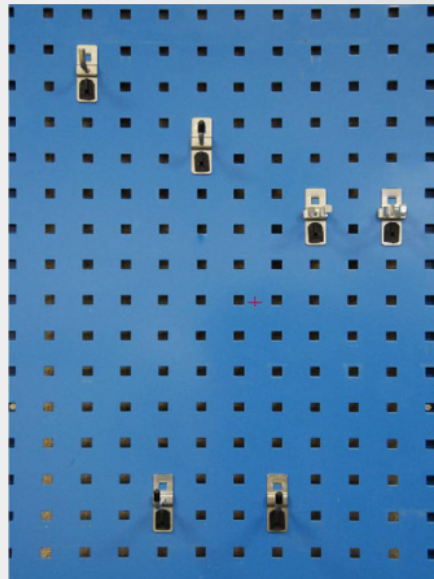
| Model/ UPC # | Description | Page |
|-----------------|--|------|
| 54068 | 3-panel single-sided toolboard stand (classic blue) | 20 |
| 50168 | 3-panel double-sided toolboard stand (utility tan) | 20 |
| 51168 | 3-panel double-sided toolboard stand (utility gray) | 20 |
| 52168 | 3-panel double-sided toolboard stand (utility blue) | 20 |
| 54168 | 3-panel double-sided toolboard stand (classic blue) | 20 |
| 50070 | 2-panel single-sided benchmount stand (utility tan) | 21 |
| 51070 | 2-panel single-sided benchmount stand (utility gray) | 21 |
| 52070 | 2-panel single-sided benchmount stand (utility blue) | 21 |
| 54070 | 2-panel single-sided benchmount stand (classic blue) | 21 |
| 50170 | 2-panel double-sided benchmount stand (utility tan) | 21 |
| 51170 | 2-panel double-sided benchmount stand (utility gray) | 21 |
| 52170 | 2-panel double-sided benchmount stand (utility blue) | 21 |
| 54170 | 2-panel double-sided benchmount stand (classic blue) | 21 |
| 50084 | Mobile toolboard crib (utility tan) | 22 |
| 51084 | Mobile toolboard crib (utility gray) | 22 |
| 52084 | Mobile toolboard crib (utility blue) | 22 |
| 54084 | Mobile toolboard crib (classic blue) | 22 |
| 99852 | 30-piece toolholder set | 23 |
| 99853 | 60-piece toolholder set | 23 |
| 50052 | 16"x24" toolboard storage bag | 24 |
| 50051 | 16"x12" toolboard storage bag | 24 |
| 99820 | Single hook - vertical end 1" | 25 |
| 99821 | Single hook - vertical end 2" | 25 |
| 99822 | Single hook - vertical end 3" | 25 |
| 99823 | Single hook - angled end 1" | 25 |
| 99824 | Single hook - angled end 2" | 25 |
| 99825 | Single hook - angled end 3" | 25 |
| 99827 | Double hook - vertical end 1" | 25 |
| 99828 | Double hook - vertical end 2" | 25 |
| 99829 | Double hook - angled end 1" | 25 |
| 99830 | Double hook - angled end 2" | 25 |
| 99831 | Plier hook - 1 3/8" | 26 |
| 99832 | Plier hook - 2 1/8" | 26 |
| 99839 | Ring hook - 2 3/8" | 26 |
| 99833 | Single spring clips - 1/2" | 26 |
| 99835 | Single spring clips - 3/4" | 26 |
| 99836 | Single spring clips - 1" | 26 |
| 99840 | Screwdriver unit | 26 |
| 99841 | Wrench rack | 26 |
| 99842 | Allen key unit | 27 |
| 99846 | Parts shelf | 27 |
| 99847 | Plastic bin storage strip 4" | 27 |
| 99848 | Plastic bin storage strip 17 3/4" | 27 |
| 99876 | Cable loop hook set | 27 |
| 50081 | Mobility kit 5" x 1 1/2" | 28 |
| 50083 | Mobility kit 3" x 1 1/4" | 28 |
| 50053 | Push/Pull handle | 29 |

The Ultimate Visual Control

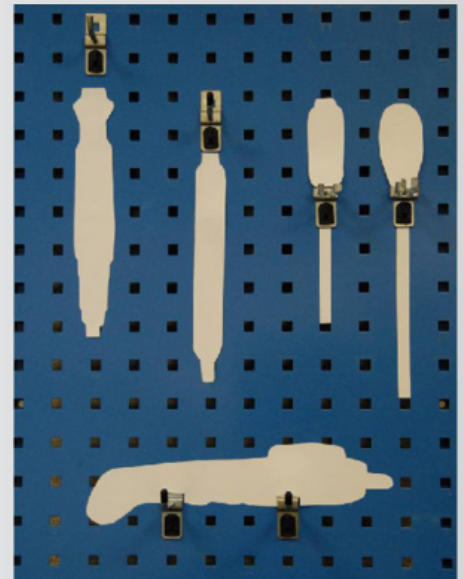
Enhance your visual tool control at a glance! Cutouts made from magnetic colored vinyl let you identify missing tools in an instant. Trace tools with an erasable marker, cut out shapes with any scissors or utility knife, and apply to your toolboard. Cutouts peel off easily for effortless repositioning. *Available at www.kennedymfg.com*



The Kennedy toolboard system makes it easy for you to arrange and secure your tools.



But will you remember what tool goes where when they are on the shop floor?



Take the guesswork out of tool management with easy to use magnetic vinyl cutouts.

Organize your toolboard in 3 easy steps!

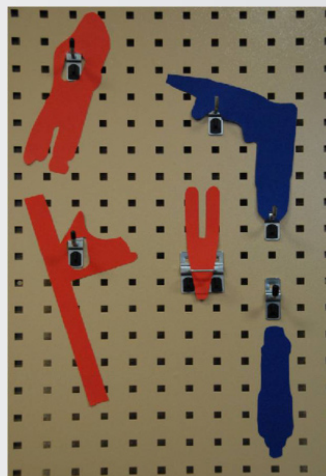
- Group tools by utility/function
- Position tools on the board
- Insert and secure hooks

Create tool cutouts for your toolboard!

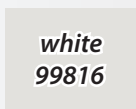
- Select tool group cutout color
- Trace tools with marker
- Cut out tool profiles

Maintain your toolboard!

- Position magnetic cutouts on toolboard
- Reposition cutouts as needed
- Magnetic strips peel cleanly and effortlessly



Magnetic sheets are available in 4 colors:



Toolboard Storage System Catalog

For more information, please
check with your local distributor.

Kennedy[®]
Since 1911

1260 Industrial Drive, Van Wert, OH 45891-2433
Phone: 800-413-8665 Fax: 419-238-5644

www.kennedymfg.com

© 2009 Kennedy Mfg. Co.