

AHB Tooling & Machinery

MACHINERY CAPABILITIES CATALOG



ERMAKSAN
METAL FABRICATING MACHINERY



 **Flow**



AHB
TOOLING & MACHINERY

COMPLETE METALWORKING SOLUTIONS

Phone: (800) 991-4225

www.AHBinc.com

customerservice@AHBinc.com

 **JUPITER**



Many Offerings For Display & Demo
In Our Roseville Showroom!



ERMAKSAN
METAL FABRICATING MACHINERY

Heavy Duty Brakes

Over 50 Years of World-Class
Fabricating Machinery

Power Bend 'Falcon'

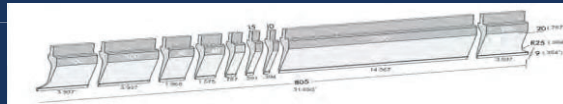


- 1,100 to 3,300 Tons
- Up to 46' SINGLE BEAM!
(World's largest single beam brake!)
- 2,200 Ton x 40' Tandem
- 13,200 Ton x 106' (4 x Tandem)



- 44 Ton x 50" to 1560 Ton x 20'
- Y1/Y2/X/R/ CNC Crowning
- Precision Roller (Italy) Hardened & Ground Tooling
- Quick Release Ram Clamps (American/Euro)
- Delem DA-58T Touch Screen Control
- Fiessler/Akas Laser Finger Guards
- Generous Open Height with Long Stroke

Premium Roller (Italy) precision hardened & ground segmented tool set with right & left hand horns included with every Ermak press brake!



Shears

Evolution III Hybrid



- Swing-beam & Guillotine Styles
- 1/4" to 1-1/2"
- 10' to 20' Lengths
- Powered Blade Clearance- Standard
- Powered Rake Angle- Standard on Guillotine
- Touch Screen Programmable Controls
- Powered Sheet Supports & Conveyors Offered



- Fast-Quiet-Energy Efficient-Accurate
- +/- .0003° Accuracy
- 65% Less Energy
- 95% Less Hydraulic Oil (Less than 5 Gallons!)
- Hydraulics Only Run When You Step on the Pedal
- Y1/Y2/X/R/Z1/Z2/X-Prime/CNC Crowning- STD

FEATURES OF THE ERMAKSAN SPEED BEND



Power Bend Seater



- 66 Ton x 50"
- 4-Axis CNC with Work Table
- Can Sit or Stand
- Adjustable Control Arm
- 2 Sets of Foot Pedals
- Delem DA-58T Control
- 17" O.H. & 11" Stroke
- Tooling Included

Green Press Fx Servo



- Electric Belt Drive
- X/Y/R/Z1/Z2 Axis
- 69% Energy Savings
- Full Length Bending
- 19" O.H. & 12" Stroke
- Even Pressure-- No Need for Crowning



Phone: (800) 991-4225

Email: customerservice@AHBinc.com

Website: www.AHBinc.com

AHB
TOOLING & MACHINERY
COMPLETE METALWORKING SOLUTIONS



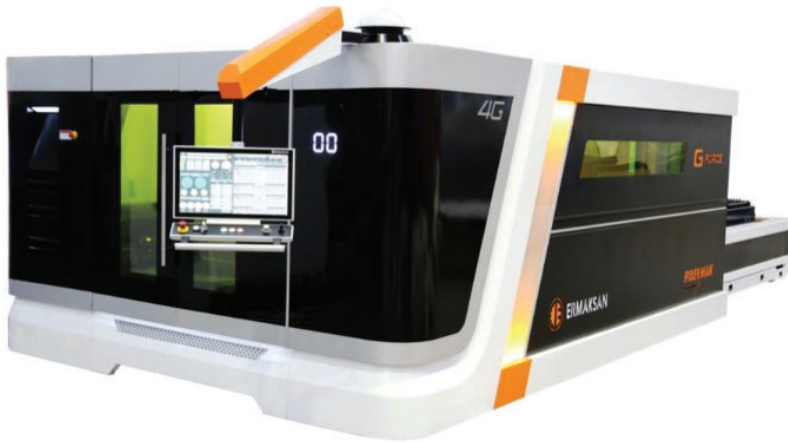
ERMAKSAN
METAL FABRICATING MACHINERY

Fibertube Laser



- Tube & Profile Processing
- Uninterrupted Continuous Cutting with Bundle Loader
- User-Friendly Interface
- Low Maintenance Fiber Technology

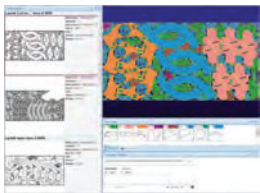
Fibermak G-Force Fiber Laser



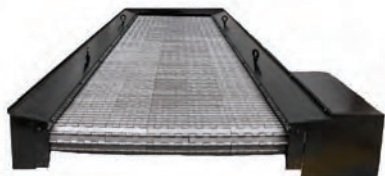
Models Available:

- Dual Shuttles
- Single Table
- End Load
- Side Load
- Bevel Heads
- Tube/Pipe Attachments

Standard Features Include:



Metalix or Lantek Expert
CAD/CAM Software



Scrap & Small Parts Conveyor



Precitec Head



Dust Collector Included



Windows 10 Beckhoff
Control with Live Hi-Def TV



Phone: (800) 991-4225
Email: customerservice@AHBinc.com
Website: www.AHBinc.com



Eco-Friendly

A real eco-friendly machine with low energy consumption and low powder waste.

Ease of Use

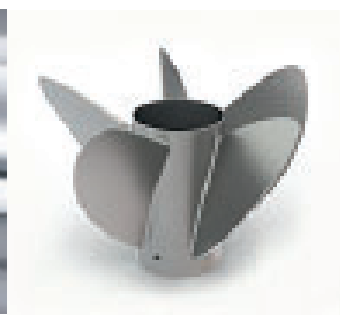
ENAVISION machines have an intuitive Human Machine Interface (HMI) that enables ease of use.

Saving With High ROI

ENAVISION will make you more competitive with high ROI and low operating cost. All ENAVISION models help investors to realize saving across all industries.

Model Features:

- Chiller Unit
- Filtration Unit
- Recoating System
- Power Recovery System
- Industrial Vacuum Cleaner System
- Anti-Static Equipments



CAN PRINT: Aluminum, Tool Steels, Inconel, Hastaloy, Stainless, Titanium, etc.



Life Tables



Tilting & Upending



Worker Platforms



Turntables



Worklite Positioners



Heavy Duty Lifts



Cold Saws

Model C370CNC' Fully Automatic

- Up to 5" Solids with 14.5" Blade
- Mitering
- Rigid Column-Style Design
- Incline Loading Table Available



Pivot Style



Automatic CNC Column Saw



Vertical Column Saw



"Nothing Happens 'Til You Saw It!"
-Al Szarek, Founder Westbrook Eng.

**Preventative
Maintenance
Contracts
Available**

**Each Saw is
Loaded with a
Premium Lenox
BI-METAL Blade**

**Best Cost
per Cut
in the
Industry!**

V25- The King of Vertical Saws!

- 25'W x 30"H
- 60° Mitering
- 6° Canted Head
- 1-1/2" Blade
- 10 HP
- Direct Drive- No Belts or Pulleys
- 5' Shuttle STD- 10' Optional



DM Series- 10" Capacity

- Waist High Table & Compact Design
- Miters 45° R & 60° L By Swing Head
- Cast Iron Heads & Vises for Rigidity



"S" Series

- Scissor-Type Swing Head Mitre Saws
- S20: 13" x 18" x 1" Blade
- S23: 16" x 20" x 1-1/4" Blade
- 30 Degree Mitering



"M" Series

- Scissor-Type Swing Head Mitre Saw
- M16A: 16" x 25" x 1-1/4" Blade
- M20A: 20" x 30" x 1-1/2" Blade
- All Hydraulic Movements
- Automatic Mitering to 30 degrees
- Powered Chip Auger
- The best bundling saw on the market!



CNC Carbide Saws

- 2.3", 3", 4", 5", 6", & 7" Diameters
- Bar Loader Standard
- Chip Remover Standard
- Fast & Accurate

"H" Series

- From 9" x 9" to 40" x 80"
- Positive Downfeed System
- PLC Controls w/ 99 Job Storage & Job Queue Function
- Hydraulic Chip Auger

**Many Models In Stock
In Our Roseville, MI
Showroom!**

Phone: (800) 991-4225

Email: customerservice@AHBinc.com

Website: www.AHBinc.com



COMPLETE METALWORKING SOLUTIONS

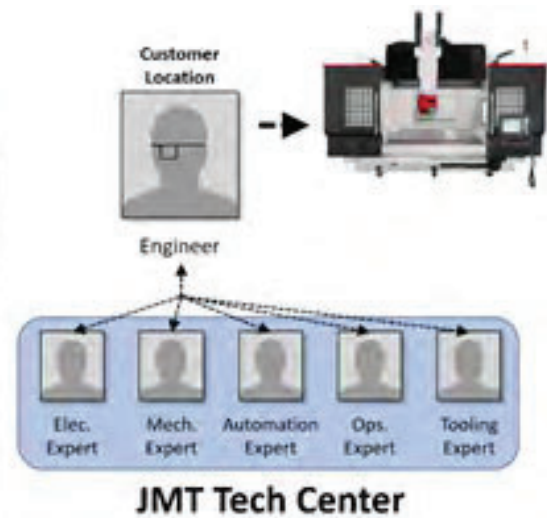
JHL-1180

- CNC Horizontal Lathe
- Fanuc Oi-Mate TD CNC System
- Chuck – 10” hydraulic through hole 3-jaw
- Fanuc Oi-TD 10.4”
- Fanuc Manual Guide i
- PCMCIA interfac
- RS-232 interface
- Tool holders – boring (4), facing (1), OD (4)
- Transformer – 480V to 220V
- Turret – hydraulic, 8 stations



Jupiter AR Thunderbolt Service

- State-of-the-Art Remote Assistance Kit
- Allows for Jupiter team to immediately diagnose electrical, mechanical or CNC control issues
- Includes set of smart-glasses and proprietary software
- Connect to local wireless LAN or mobile hotpot and Jupiter's experts will hear and see what you see in high-def video





VMC-4022

- Travels 40x22x21 (X,Y,Z)
- Linear Roller Guideways
- Rapid Traverse 1890 (X&Y), 1180 (Z)
- Fanuc Oi-MF Plus Control w/ 15" Touchpanel
- 12,000 RPM CAT-40 Dual Contact, 20 HP Belt-Driven Spindle
- Coolant thru Spindle @ 300 PSI with Dedicated Pump
- 4th & 5th Axis Pre-wired
- RS-232 & CAT-6 Interface
- Machine Weight 14,300lbs.
- Meehanite Casting
- 30 Slot Tool Changer
- Box way machines available

***Models available with 5-Axis, as well as Bridge and Gantry style machines*

VMC-4022



Heavy-Duty Bridge & Gantry Machines



5-Axis VMC

- 3 Axis Vertical Machining Center
- Linear Roller
- Enclosed splash guard
- Fanuc Oi-MF 10.4" LCD w/ AICC 2 control
- RS-232 & CAT-6 interface
- Spindle oil cooler
- Various Spindle Configurations Available

Phone: (800) 991-4225

Email: customerservice@AHBinc.com

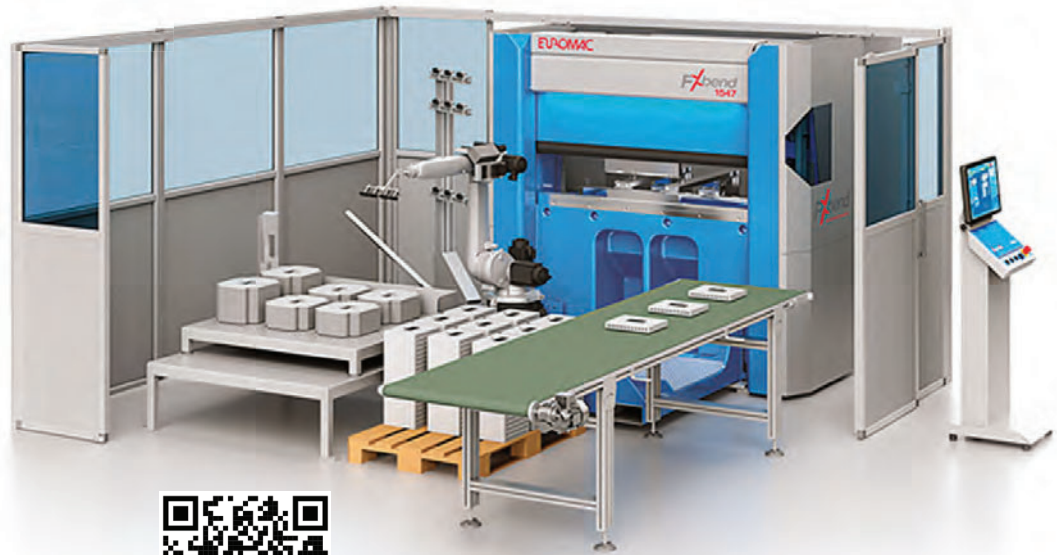
Website: www.AHBinc.com



Electric Press Brake

Robotic Cell

- Cell for Small & Medium Sized Pieces with High Production Capacity
- From 25 Ton x 40" to 110 Ton x 10'
- Unload to Box, Pallet, or Conveyor
- 3 Grippers with 3 Different Sizes
- Can Use Press Brake Manually Without Robot



Euromac MTX AutoIndex Punch

- Innovative 6 Station Center Up to 66 Tools
- Multitasking
- Brush Table is Standard
- Auto Index is Standard- Rotate up to 30 Tools!
- Automatic Clamp Positioning
- Threading Available
- PC Based (Hewlett-Packard)
- Tele-Service

Euromac All-Electric Press Brake

- Servo Ball Screw Driven
- Stable Mehanite Cast Frame
- 7-Axis Gauging Available
- Hydraulic Tool Clamping

Flexible CNC Punching Press



Forming & Tapping



Extrude



Bending & Forming with Auto Index



22, 33, or 55 Tons!
40", 50", or 60" throat
Up to 3-1/2" Hole Diameter in One Hit!

- Automatic Load/Unload System
- 5' x 10' x 1/4" Max Thickness
- Automatic Sheet Separation
- Compact and Robust Design



EUROMAC

Flexible CNC Punching Press



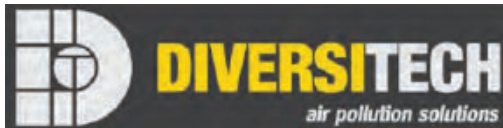
**4, 6, & 10- Station
Multi-Tool**



- Up to 66 Tools! 30 Auto Index!
- Up to 3.5" Diameter
- Up-Forming Available



Compact Model



Filtration Systems



Downdraft Tables

- Collects Dust, Smoke, & Fumes Through Perforated Table Top
- Variety of Custom Kits & Fittings
- Arrestance of 92% at 2 Microns
- Tables up to 10' long!



Fume Extractors

- Removes Weld Fumes, Dusts, & Airborne Contaminants
- Captures Fibers as Small as 0.5 Micron
- Easy-to-Clean Filter
- Cleans With Compressed Air (No Dust Cloud)

Dust Collector

- Steel Constructions for Continuous Operation
- Reverse Pulse Cleaning System
- Cost-Effective Filter System



Phone: (800) 991-4225

Email: customerservice@AHBinc.com

Website: www.AHBinc.com

AHB
TOOLING & MACHINERY
COMPLETE METALWORKING SOLUTIONS

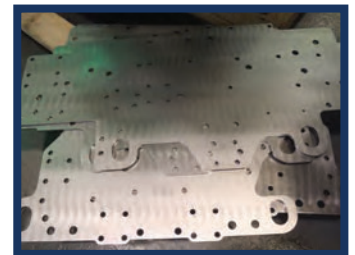


COSTA

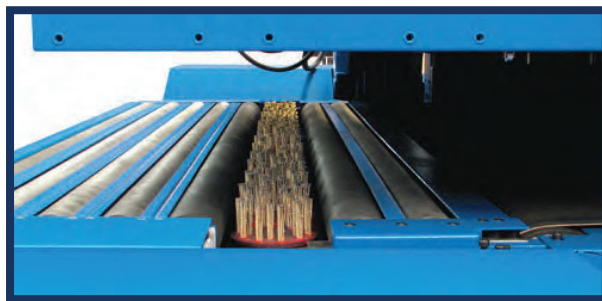
LEVIGATRICI

Finishing Machines

- Available in many widths
- Belt/brush combinations for de-burring, edge rounding, graining, random pattern, etc.
- Top & bottom models available



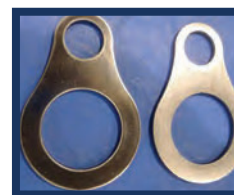
Wire & Flapper Brushes Available



Top & Bottom Machines Available



Edge Rounding



Edges:
Only If Desired



Oxide Removal



W Series

This wet process series combines the heavy duty structure of constant pass-line technology with heavy duty cylinders or brush units. These machines can be equipped with 2 through 5 internal working units!



Punches, Drills, & Cutters

**Developed & Manufactured
in Flint, Michigan for Over
60 Years!**

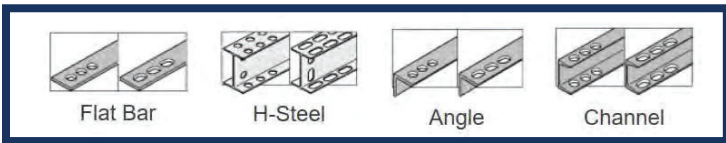
OGURA Punches

- Self-Contained Hydraulic
- Up to 15/16" Diameter
- Up to 1/2" Thick



**The Original
Rota-Broach Drills**

- Lightweight
- Easy to Feed
- Drill Up to 2" Diameter
in One Pass
- 3" Models Available
- Swivel Base Available
- Power Feed Available



Pipe & Tube Benders

**1, 2, & 3 Axis CNC
Available!**



Ercolina 050 Plus

- 2-1/2" Tube, 2" Pipe
- One-Touch Digital Control
- On Wheels & Portable

**Machines Available up
to 6" in Diameter!**



Tube & Pipe Kits Available

Kits include:

- Center Formers & Counterbend Dies
(1/2", 3/4", 1", 1-1/4", 1-1/2", & 2")



**Standard and Custom Ironworker
Punches & Dies!**



Phone: (800) 991-4225

Email: customerservice@AHBinc.com

Website: www.AHBinc.com



Cold Saws

- Scotchman Saw with Bundle Load Magazine



- Scotchman Pivot Saw (Hand & Semi- Auto) (Ferrous & Non- Ferrous)



- SUP- 600 Non-Ferrous Upcut Saw with Programmable Gauging
- 20" & 24" Dia Blades Available



Ironworkers

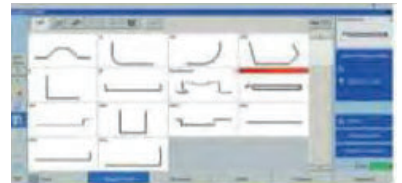
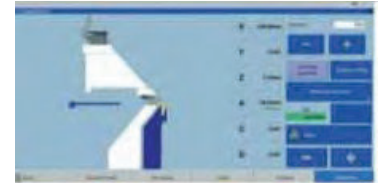
- Many models available
- 24" Plate Shears Available
- One or Two Man Operation
- Built-In Notcher & Press Brake Tooling Available
- Power Cavity with Quick Change Tools

SCHRÖDER GROUP

Up/Down Folding Machines

World's Most Advanced Folding Machines!

- Up/Down Folding Eliminates Part Flipping
- Tall Tools & Large Open Heights
- Segmented Upper & Lower Tools
- CNC Crowning
- Automatic Sheet Feeding with Suction Cup Option
- Part Stays Flat on Table



Suction Cups



HA 250 & 400 Scissor Style



HFA 700 & 1000 2-Post



**Pulse Cutting Saws
from 13" to 28"**



Vertical Plate Saws



**Circular Carbide Saws
for Bar Stock**

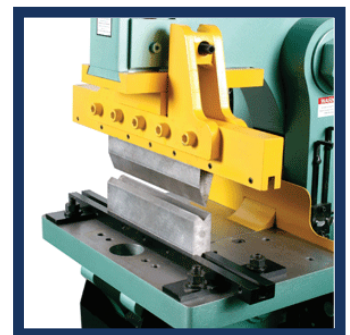
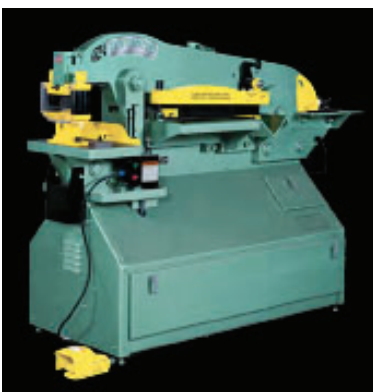


**Duplex Milling-
Automatic Block
Squaring**

Ironworkers



- 36 to 140 Ton- single or dual operator
- Quick Change Dove-Tail Tooling
- Press Brake Tool Available
- 60 SPM on 50 Ton Machine
- Automatic Hold-Downs
on Punch, Plate Shear, & Angle Shear



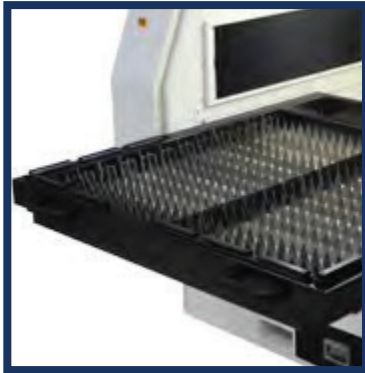
Phone: (800) 991-4225

Email: customerservice@AHBinc.com

Website: www.AHBinc.com

FC Series Laser

- 4 x 4, 4 x 8, & 5 x 10 Cutting Tables
- High-grade Ball Screws
- Brushless Servo Drives Allow Cutting to .0004"/ft. Accuracy
- Stable Granite Base



Roll Out Table

SIDEROS[®]

ENGINEERING

Rotolift

- 3-Axis
- Welding & Handling Positioner
- Elevate, Tilt, & Rotate
- From 2,750 lbs. to 100 Tons



Syncrolift

- Head & Tail Stock Welding Positioner
- From 4,400 to 55,000 lb. Capacity
- Up to 73" Vertical Travel
- Pallet Jack on Headstock
- Rotating Ground
- Handheld Pendant



DAIHEN INC.



- High Quality Mag/CO2 Welding
- High Quality Aluminum Mig Welding
- Ultra Precision Tig Welding
- High Quality Plasma Cutting



Increase Production & Quality!

Insertion Presses



Great Machines for Inserting Different Fasteners in a Single Part Handling!



Hardware Insertion Press

- Programmable Stop or Hard Stop
- Manual Feed & Automatic Bowl Available
- PC-Based Touch Controls
- Part & Tool Library Available



824 OneTouch

- Touch-Screen PC interface
- 4-Modular Autofeed System feeding units
- 4-Station Upper & Lower Tool Change System
- Fastener Library
- Automatic Tonnage & Settings for Each Fastener

Fastener Library

Size	Steel	Aluminum	Force
CF80313-10	STEEL		3600
CF80313-12	STEEL		3600
CF80313-14	STEEL		3600
CF80313-16	STEEL		3600
CF80313-18	STEEL		3600
CF80313-20	STEEL		3600
CF80313-22	STEEL		3600

Phone: (800) 991-4225

Email: customerservice@AHBinc.com

Website: www.AHBinc.com





"Versagraph Extreme" Cutting Machine

- Up to 4 Plasma Stations
- Up to 2 Full Plasma Bevel Stations
- Up to 16 Oxyfuel Stations
- Powerful 6HP A/C Servo Drives
- +/- .005" Positioning Accuracy
- Cut Widths to 24 Feet
- Auto-Cleaning Scrap Tables Available



Aronson Welding Positioners

- Higher Performance, Precision Gear Cases Minimize Backlash Under Heavy Loads
- 135° Powered Forward Tilt
- NEMA 12 Electricals
- 90,000 PSI Aluminum-Bronze Worn gear Drive
- Transportable Throughout a Facility
- Load Capacities of 16,000 to 70,000 lbs.



3D-LT Bevel Head

- 50° Positive & Negative Tilt
- Continuous 360° Rotation
- Compact, Fast, & Accurate
- True Focal Point Technology
- Bevel Types Include X, Y, V, & K Bevels



Tank Turning Rolls



Pipe Rotator Available



Shop Pro & Shop Pro XHD

- 4'x4' Shop Pro
- 4'x8', 5'x10', & 6'x12' Shop Pro XHD
- Dual Side Drive with Linear Bearings
- Water Table or Down Draft
- Plasma & Oxy Fuel Available to 2" Thick

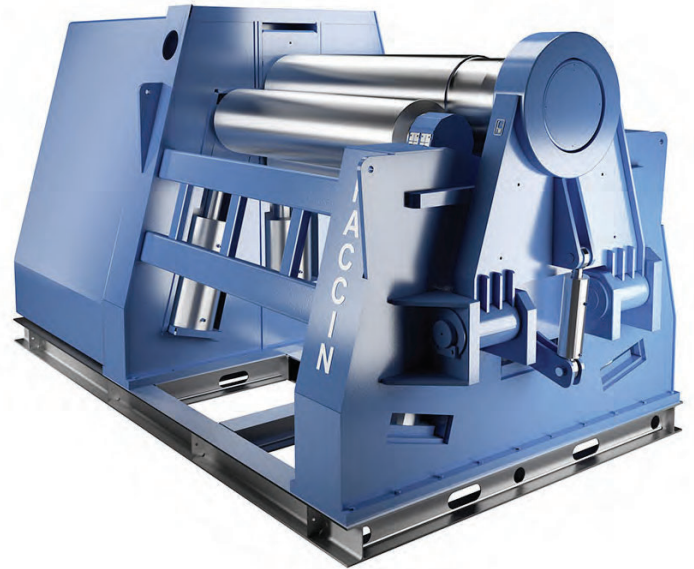


FACCIN

Plate & Angle Rolls, Head Lines

Hydraulic Plate Rolls

- Single Pinch Capacity up to 10' Long
- Double Pinch 3 Roll 1/4" to 3" x 16' Long
- 4 Roll 10ga to 6" Thick x 40' Long
- Variable Geometry 5/8" to 18' Thick x 40' Long
- Special Machines up to 70' Long
- Wind Tower Processing Lines

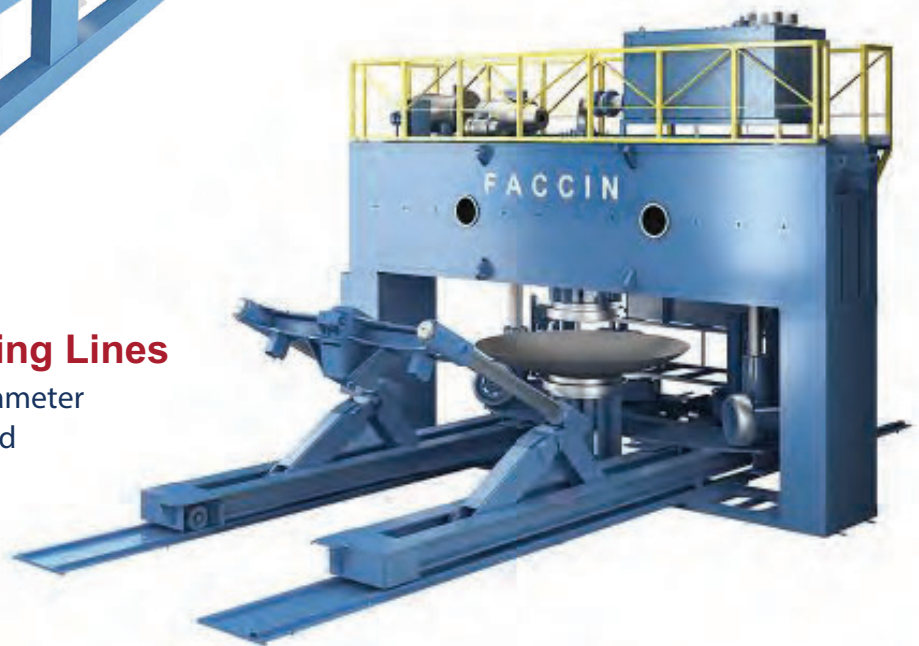


Angle & Section Bending Rolls

- Manual & NC/CNC Controlled
- Angle Capacity 4" x 4" x 1/2" & Up
- Sections & Beams Up to 12" x 79"

Dished Head & Flanging Lines

- 1/4" to 2" Thick & 8' to 30' Diameter
- Manual & NC/CNC Controlled



Phone: (800) 991-4225

Email: customerservice@AHBinc.com

Website: www.AHBinc.com

AHB
TOOLING & MACHINERY
COMPLETE METALWORKING SOLUTIONS



Sheet, Plate, & Angle Rolls

Made in the U.S.A.!

Robust Designs Built for Simplicity & Ease of Service!



B-Model Sheet Metal Roll

- 3- Roll Initial Pinch
- H&P Rolls
- Powerbend Roll Adjustment
- 3rd Roll Drive (Optional)



Model AR Section Roll

- Angle, Flat Bar, Channel- STD
- Pipe & Tube Optional
- LED Read-Outs

3 & 4-Roll 403 Series

- Double Pinch
- Eliminate Flats
- Able to Roll Cones



Tapered Cone Machine

- Tapered Cones in One Pass
- Interchangeable Rolls
- Small Ends Possible

Large Plate Machines

Pictured:
• 3' x 10' 4-Roll with 29" Top Roll





Coolant & Oil Filtration Solutions

Evolution Series Filtration System

- Clean/Dirty Self-Cleaning Carbon Steel Tank
- Four Prefilter Bags with Cartridge Drip Tray
- Filter Vessel Containing 3 Micron Rated Filter Cartridges
- 24,000 BTU Cabinet Mount Chiller
- Optional Machine Feed Pump
- Filter Service Beacon



Coolant DI Water Make-Up System

- Designed to Treat Incoming City Water into DI
- Includes Virgin Mixed Bed Resin Bag
- Connects Easily to Incoming City Water
- DI Conductivity Light Keep You Notified of Water Quality



Coolant Clarification Systems

- Extend Coolant Life by Preventing Contaminants from Accumulation
- Combines Circulation, Filtration, and Evacuation
- Virtually Maintenance-Free
- Decreased Cost & Cleaner Working Environment



Precision Machining Filtration

- Remove Solids from Solution to Specified Micron Clarity
- Filter Media Compatible with Oil & Water Soluble Fluids
- Gun Drilling
- Machining Center High Pressure Flush



- Media Free Solids Control
- Micron-Rated Superior Filtration
- Temperature Control
- Central Systems
- Point-of-Use Systems

Phone: (800) 991-4225

Email: customerservice@AHBinc.com

Website: www.AHBinc.com



Waterjet Replacement Parts & Pumps

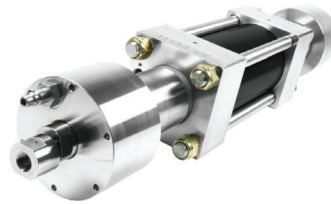


Waterjet Pump

- Range in HP from 15 to 150
- Increased performance
- Predictive maintenance
- Improved reliability and ease of service

Waterjet Cutting Parts & Service

- Parts for Pumps, Cutting Heads, Abrasive Delivery Products, & High Pressure Plumbing/Tubing
- All Major Brands (AccuStream, Flow, KMT, etc.)



Flow



KMT



Chillers

Chiller Systems

- Optimization of the Refrigerant
- Energy-Efficient Components at Both Full & Partial Load
- Controlled System Configurations for Efficiency
- Energy-Saving System (Free Cooling)

Reduce Operating Costs & CO2 Emissions!





Waterjet Cutting Machines & Parts



Mach 100

- Rapid Traverse Maximum Up to 400 in./min.
- Linear Straightness Accuracy of +/- .005 in./3 ft.
- Repeatability of .0025 in.
- Configurable with Multiple Cutting Head Options



Mach 200

- Rapid Traverse Maximum Up to 400 in./min.
- Linear Straightness Accuracy of +/- .003 in./3 ft.
- Repeatability of .0015 in.
- Pivot+ Waterjet for bevel cutting



Mach 500

- Rapid Traverse Maximum Up to 700 ipm
- Linear Straightness Accuracy of +/- .0015 in./ft.
- Repeatability of .001 in.
- Configurable with Multiple Cutting Head Options
- Built-In Software Suites programming



Phone: (800) 991-4225

Email: customerservice@AHBinc.com

Website: www.AHBinc.com



We Service! We Deliver!

We install, service, & repair all makes and models we sell!
PMP Programs also available!



We Stock ...

Cutting Fluids

Garnet Bulk Hopper

Bandsaw Blades



Waterjet
Replacement
Parts



Waterjet Garnet



AHB

TOOLING & MACHINERY

COMPLETE METALWORKING SOLUTIONS

Phone: 800.991.4225

www.AHBinc.com

customerservice@AHBinc.com

... and MORE!