

Serving the Mass Finishing Industry

VibeTech Horizontal Tub Finishers



Model VTHT-3070

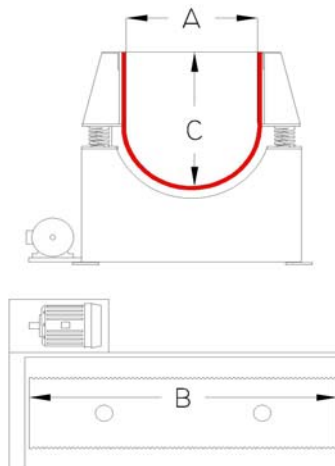
Features

- * Heavy-Duty double-row spherical roller bearings on main drive shaft
- * Heavy-Duty welded construction
- * Premium polyurethane lining (1" min)
- * Extra large springs for durability
- * Off-set drive delivers more amplitude
- * Industry's best designed lubricated drive system

Options

- Tub Dividers
- Part Carousels
- Double Curved Wall
- Media Unload Door
- Part Discharge Door
- Compound Systems
- Sound Covers
- Automation
- Variable Speed

MODEL	Channel Specs				Work Cap.	[D] HP
	[A] Width	[B] Length	[C] Depth			
VTHT-1717	17.5	17.5	19		2.2	2
VTHT-1736	17.5	36	19		4.5	3
VTHT-1748	17.5	48	19		6.0	5
VTHT-1760	17.5	60	19		7.5	5
VTHT-1772	17.5	72	19		9.0	5
VTHT-1796	17.5	96	19		12.0	7.5
VTHT-17120	17.5	120	19		15.0	10
VTHT-2450	24	50	26		11.8	7.5
VTHT-2460	24	60	26		14.1	10
VTHT-2472	24	72	26		17.0	10
VTHT-2496	24	96	26		22.6	15
VTHT-24120	24	120	26		28.3	20
VTHT-3232	32	32	34		13.4	7.5
VTHT-3050	30	50	32		18.4	10
VTHT-3070	30	70	32		25.8	15
VTHT-3096	30	96	32		35.3	20
VTHT-30120	30	120	32		44.2	20
VTHT-3660	36	60	38		31.8	15
VTHT-3684	36	84	38		44.5	20
VTHT-36120	36	120	38		63.6	20



Model VTHT-36120

Other sizes and options are available.
 Call with inquiries.