



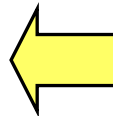
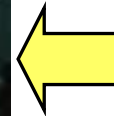
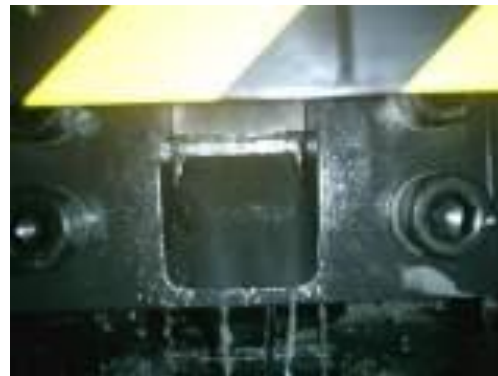
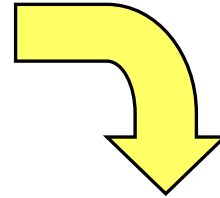
COMPLETE METALWORKING SOLUTIONS

(800) 991-4225

www.ahbinc.com

ISO Certified

customerservice@ahbinc.com



Merits and Features of Chip Compactor

Merits

Volume reduction ratio shows 1/5 to 1/50

- Realize space-saving of cutting chip yard in the factory
- Reduce the cutting chip transportation cost.
- Raise the take-over price by degreasing and briquetting.

Recapture rate of cutting oil shows over 95%

- Realize clean factory by expelling stench and sticky.
- Recycle fluid and reduce of new oil purchasing cost.

Facilitate automation of factories

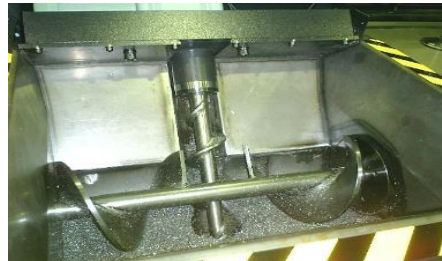
- Enable to degreasing and briquetting the cutting chip which is an obstacle to the factory automation and make line-automation easy by realizing on-spot processing.



Features



Compact Design
Briquetting by compressing Chips with 100 tons at collected Fluid device.



Original Hopper
Injecting cutting chips by continual Operation of longitudinal and sideway Screw and enable to adopt to The long-size cutting chips



Safety Design
Realize safety by impossible of opening and closing of the main Machine cover when operating and realize Electric power saving as automatic stop When cutting chip run out

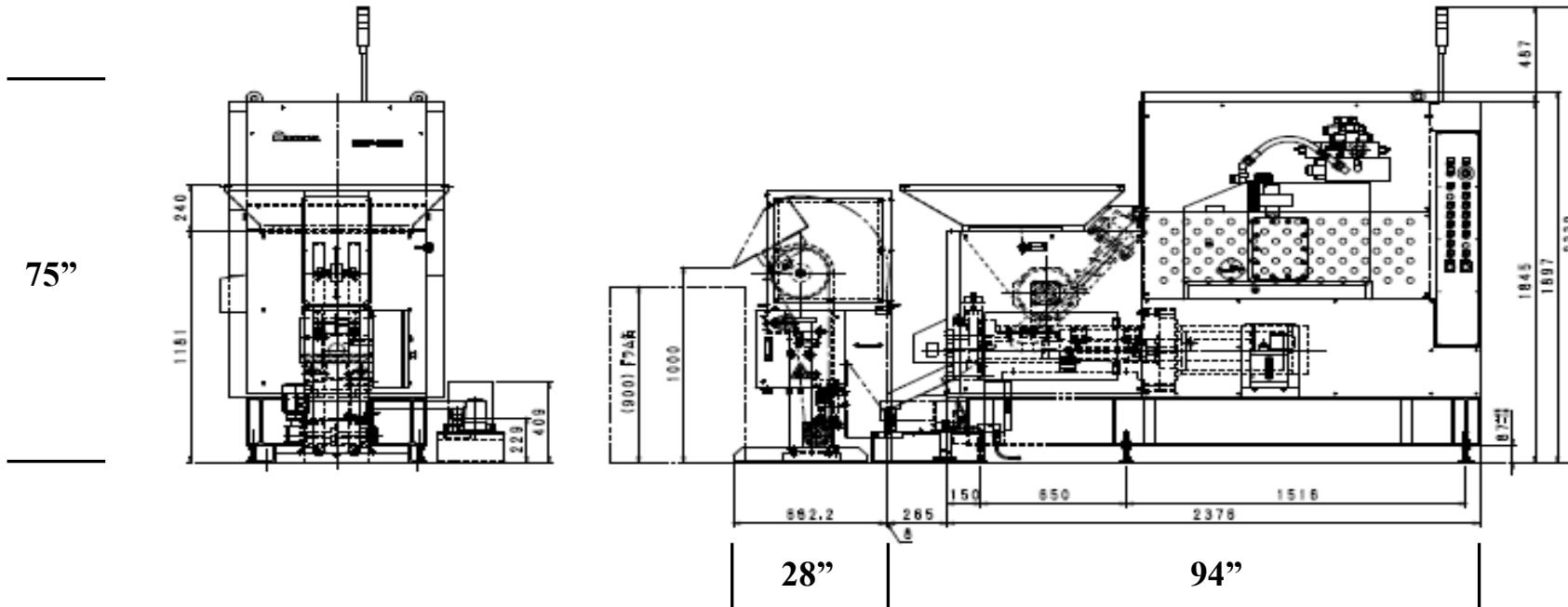
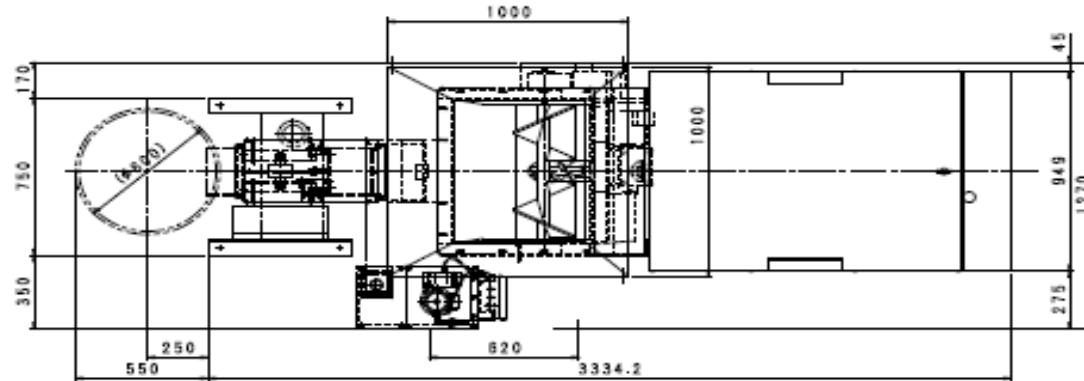


Variety of Options
Signal tower, chip injection Conveyor, etc...
The picture shows extended hopper.

■ Specification

Spec. / Type		SCP100H	SCP103H
Press Capacity (Tons)		110	
Briquette diameter (Inch)		Φ3.2"	
Compaction pressure (Tons)			
Hopper volume (Gallon)		26	
Oil pressure tank volume (Gallon)		40	42
Power requirement		3 phase AC200V/220V 50/60Hz	
Hydraulic (kW)		5.5	11
Screw motor (kW)		Vertical 0.75/Horizontal 0.4	
Lubricant (kW)		0.01	
Incoming power volume (kVA)		13	18
Machine size	W x L x H	36" x 85" x 64"	39" x 100" x 75"
Machine weight (lb)		3,970 lb	4,400 lb

SCP103H outline Drawing



Reference of user examples

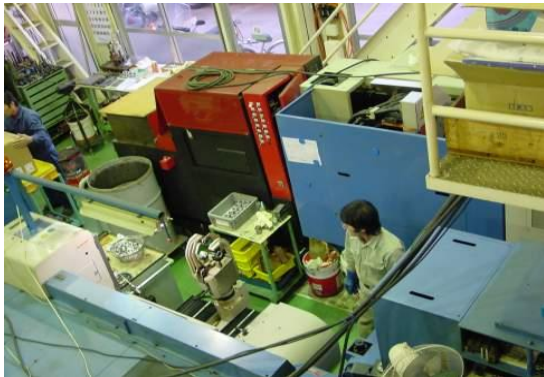
- Target for compression, volume reduction treatment per day (8 hours operation)

*Steels

Casting, small chips	3,900 lb/day
Stainless machining chip	1,770 lb/day
SS drill machining chips	1,400 lb/day
SUJ2 sludge	700 lb/day

*Aluminum

Machining Chips	750 lb/day
Casting, small chips	1,190 lb/day



User Example 3. Screw Manufacturer, S Screw Co.,Ltd. Machine Tool Lathe:20 units Machining cutting chips (SCP103H)



For making screws

- The cutting chips collected by special carriage from various parts of the factory is injected from the special feeder (high looper) chips conveyor (extended hopper spec.)
- In addition, briquettes are collected to the customer's pallet by briquette conveyor.
- It is definitely safe because workers are unable to intervene owing to the full automatic operation except for feeder operation.
- It realizes space-saving of chip yard, recycling collected fluid, and raising the taking-over cost for the chips.