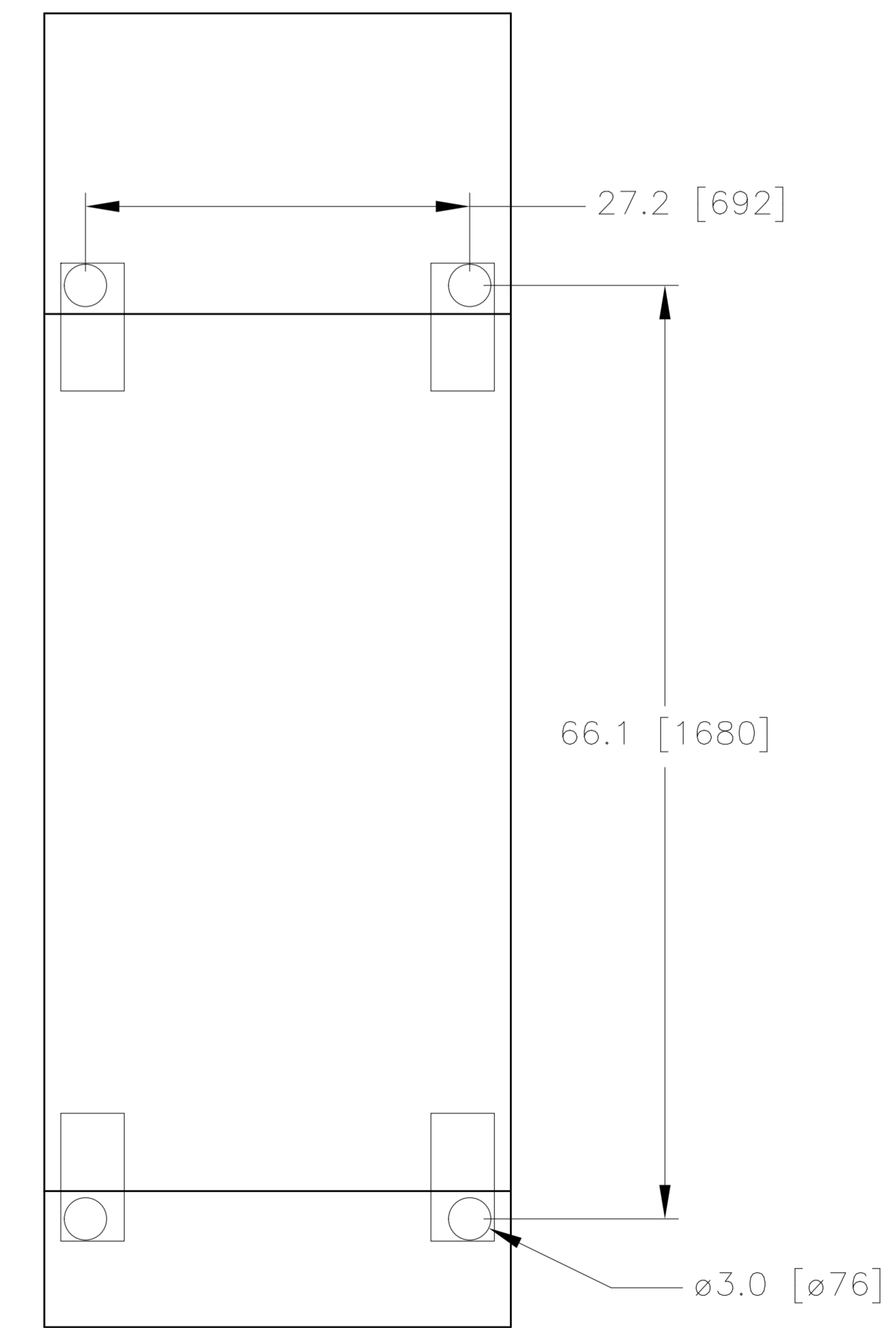
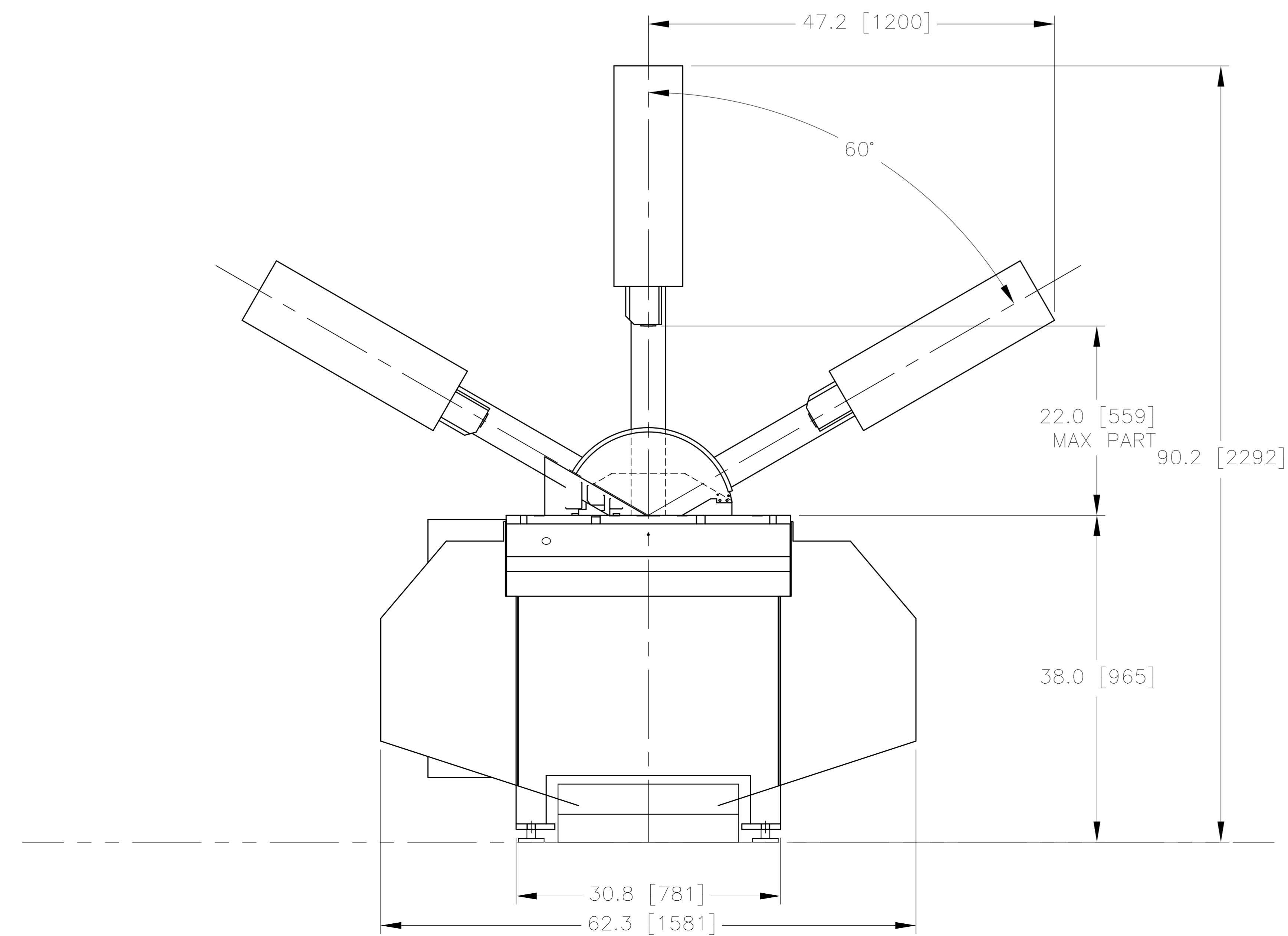


TABLE CROSS-SECTION
1:4 SCALE



FOOT PAD LOCATION



NOTES:

1. STRAIGHT COLUMN OPTION SHOWN.
2. MEASUREMENT SHOWS REARMOST POSITION OF BLADE.
3. MEASUREMENT SHOWS MAXIMUM VISE OPENING.

PLOTTED: PLOTDATE

| REV | DATE | REMARKS | BY |
|-----|---------|----------------------------------|-----|
| L | | | |
| K | | | |
| J | | | |
| I | | | |
| H | | | |
| G | | | |
| F | | | |
| E | 1/22/15 | MOVE ELEC PANEL ADD FOOTPRINT | MJB |
| D | 4/16/13 | ADDED 22" DIM MAX MATERIAL | MJB |
| C | 5/2/11 | TABLE HEIGHT DIM WAS 37" | SJB |
| B | 6/2/10 | REV'D SLIDING DOOR REF | SJB |
| A | 1/31/08 | ADDED CG AND ANCHOR LOC'S | SJB |

FENCING AND AREA GUARDS BY OTHERS
DIMENSIONS SUBJECT TO CHANGE

TITLE
8-MarkIII
Basic Floorplan

COMPANY

CITY, STATE

| DATE | SCALE | DRWN BY | CHECKED BY |
|---------|-------|---------|------------|
| 2/27/07 | 1:16 | RWS | |

ALL RIGHTS TO ENGINEERING, DESIGN,
INVENTIONS AND PATENTS RESERVED
TO AND PROPERTY OF:

MARVEL MFG. CO.
OSHKOSH, WI., U.S.A.

CAD NO.

Spec8MIII

PART NO.

Spec8MIII