

# Clausing Radial Drills

600 Group

*A Line of Precision Heavy-Duty,  
Large Capacity Radial Drills*



- Drilling Capacity up to 3.15" in Steel  
3.94" in Cast Iron
- Tapping Capacity up to 2.56" in Steel  
2.95" in Cast Iron
- Boring Capacity up to 6" in Steel  
10" in Cast Iron



**CL720A**

## Clausing Radial Drills Models: CL720A, CL820A, CL920A

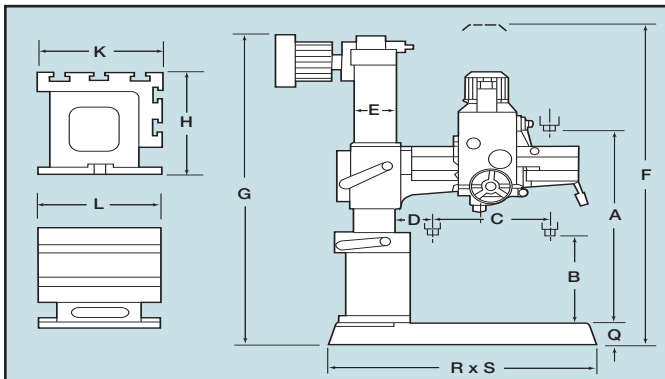
### Features and Standard Equipment:

- Limit switch
- High speed gears are made of Nickel-Chrome Steel and are heat-treated and ground for durability.
- Powerful 2 Hp spindle drive motor for heavy-duty cutting
- Extra auxiliary dial for spindle feed depth indication, allows review of spindle feed depth, .0394" to 7.874"
- Special spindle balance mechanism, superior to traditional balance mechanism and extends Balance Spring life
- Coolant system
- Low volt and overload protection
- CSA Electrics Standard ● Tool kit and manuals

### Specifications:

Model	CL720A	CL820A	CL920A
<b>Working Area:</b>			
Column Sleeve Dia. (E)	8.28" (210mm)	8.28" (210mm)	8.28" (210mm)
Column Face to Spindle Center			
Maximum (D+C)	29.5" (750mm)	33.5" (850mm)	37.4" (950mm)
Minimum (D)	8.7" (220mm)	8.7" (220mm)	8.7" (220mm)
Spindle Head Travel (C)	20.8" (530mm)	24.8" (630mm)	28.7" (730mm)
Base Surface to Spindle End			
Maximum (A)	41.7" (1060mm)	47.6" (1270mm)	47.6" (1210mm)
Minimum (B)	10.2" (260mm)	13.8" (350mm)	13.8" (350mm)
Arm Vertical Travel (A-B)	22.8" (580mm)	25.2" (640mm)	25.2" (640mm)
Arm Rotation (Right & Left)	180°	180°	180°
Baseplate Working Surface	35.5" x 25.3" (902x643mm)	35.5" x 25.3" (902x643mm)	35.5" x 25.3" (902x643mm)
Box Table Area			
Length (L)	23.6" (600mm)	23.6" (600mm)	23.6" (600mm)
Width (K)	17.5" (445mm)	17.5" (445mm)	17.5" (445mm)
Height (H)	15" (380mm)	15" (380mm)	15" (380mm)
Base Dimensions			
Floor Area (R x S)	49.6" x 25.2" (1260x640mm)	49.6" x 25.2" (1260x640mm)	49.6" x 25.2" (1260x640mm)
Height (Q)	6.5" (160mm)	6.5" (160mm)	6.5" (160mm)

### Dimensions:



### Capacities:

Model	CL720A	CL820A	CL920A
<b>Capacity:</b>			
Drilling			
In Steel	1.26" (32mm)	1.26" (32mm)	1.26" (32mm)
In Cast Iron	2" (50mm)	2" (50mm)	2" (50mm)
Tapping			
In Steel	1" (25mm)	1" (25mm)	1" (25mm)
In Cast Iron	1.26" (32mm)	1.26" (32mm)	1.26" (32mm)
Boring			
In Steel	2.75" (70mm)	2.75" (70mm)	2.75" (70mm)
In Cast Iron	4.06" (105mm)	4.06" (105mm)	4.06" (105mm)

<b>Drill Head:</b>			
Spindle Taper	4MT	4MT	4MT
Spindle Stroke	8.66" (220mm)	8.66" (220mm)	8.66" (220mm)
Quill Diameter	2.95" (75mm)	2.95" (75mm)	2.95" (75mm)
Number of Spindle Speeds	6	6	6
Spindle Speeds (rpm)	88, 154, 282, 455, 796, 1500	(all models)	
Number of Feeds	3	3	3
Spindle Feed Rate (in/mm/rev.)	0.002"/(.05mm), 0.0035"/(.09mm), 0.006"/(.15mm) (all models)		
Spindle Drive Motor	2 hp (1.5 Kw)	2 hp (1.5 Kw)	2 hp (1.5 Kw)
Elevating Motor	1 hp (.75 Kw)	1 hp (.75 Kw)	1 hp (.75 Kw)
Coolant Pump Motor	1/8 hp (.10 Kw)	1/8 hp (.10 Kw)	1/8 hp (.10 Kw)

<b>Dimensions and Weights:</b>			
Max. Machine Height (F)	85.4" (2170mm)	91.3" (2320mm)	91.3" (2320mm)
Base and Column Height (G)	72.8" (1850mm)	79.1" (2010mm)	79.1" (2010mm)
Shipping Dim.			
Length	66.1" (1680mm)	66.1" (1680mm)	71.1" (1806mm)
Width	32.5" (826mm)	32.5" (826mm)	32.5" (826mm)
Height	85" (2160mm)	86.2" (2190mm)	86.2" (2190mm)
Net Weight	2,469 lbs. (1120kg)	2,645 lbs. (1200kg)	2,756 lbs. (1250kg)
Shipping Weight	2,756 lbs. (1250kg)	2,954 lbs. (1340kg)	3,086 lbs. (1400kg)



## Clausing Radial Drills Model: CL1100

### Features and Standard Equipment:

- High-quality cast-iron arm with heat-treated and ground slides for smooth and accurate head positioning
- The bearing bracket of gear-box is fitted with standard bearings to fit arm slide for smooth gear-box operation
- High speed gears are made of Nickel-Chrome Steel and are heat-treated and ground for durability
- Powerful 3 Hp, 2-speed, heavy-duty spindle drive motor
- Overload protection device
- The main spindle is balanced by a specially shaped spring
- Coolant system
- Low volt and overload protection
- CSA Electrics Standard ● Tool kit and manuals

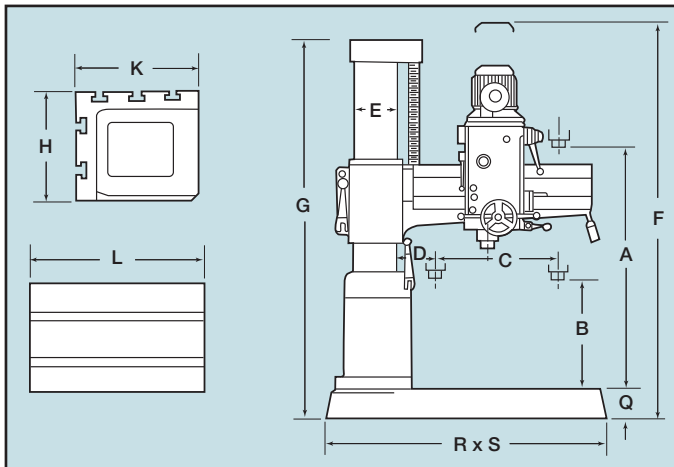
### Specifications:

Model	CL1100
<b>Working Area:</b>	
Column Sleeve Dia. (E)	10.24" (260mm)
Column Face to spindle Center	
Maximum (D+C)	43.3" (1100mm)
Minimum (D)	11.0" (280mm)
Spindle Head Travel (C)	32.3" (820mm)
Base Surface to Spindle End	
Maximum (A)	50.0" (1270mm)
Minimum (B)	18.5" (470mm)
Arm Vertical Travel (A-B)	22.4" (570mm)
Arm Rotation (Right & Left)	180°
Baseplate Working Surface	48" x 29.1" (1219 x 739mm)
Box Table Area	
Length (L)	25.0" (635mm)
Width (K)	24.5" (520mm)
Height (H)	16.3" (415mm)
Base Dimensions	
Floor Area (R x S)	67.9" x 28.1" (1725 x 715mm)
Height (Q)	7.1" (180mm)

<b>Drill Head:</b>	
Spindle Taper	4MT
Spindle Stroke	9.05" (230mm)
Quill Diameter	3.15" (80mm)
Number of Spindle Speeds	12
Spindle Speeds (rpm)	44-1500
Number of Feeds	3
Spindle Feed Rate (in/mm/rev.)	0.002"(.05mm), 0.0035"(.09mm), 0.006"(.15mm)
Spindle Drive Motor (2-speed)	3 hp (2.25 Kw)
Elevating Motor	1 hp (.75 Kw)
Coolant Pump Motor	1/8 hp (.10 Kw)

<b>Dimensions and Weights:</b>	
Max. Machine Height (F)	99.6" (2530mm)
Base and Column Height (G)	78.7" (2000mm)
Shipping Dim.	
Length	74.0" (1880mm)
Width	34.0" (864mm)
Height	87" (2210mm)
Net Weight	3,968 lbs. (1800kg)
Shipping Weight	4,299 lbs. (1950kg)

### Dimensions:



### Capacities:

Model	CL1100
<b>Capacity:</b>	
Drilling	
In Steel	1.65" (42mm)
In Cast Iron	2.16" (55mm)
Tapping	
In Steel	1" (25mm)
In Cast Iron	1.5" (38mm)
Boring	
In Steel	3.35" (85mm)
In Cast Iron	4.72" (120mm)



# Clausing Radial Drills

## Model: CL1230H

### Features and Standard Equipment:

- High-quality cast-iron arm with heat-treated and ground slides for smooth and accurate head positioning
- The bearing bracket of gear-box is fitted with standard bearings to fit arm slide for smooth gear-box operation
- High speed gears are made of Nickel-Chrome Steel and are heat-treated and ground for durability
- Powerful 3 Hp, 2-speed, heavy-duty spindle drive motor
- Overload protection device
- The main spindle is balanced by an adjustable block
- Coolant system
- Low volt and overload protection
- Equipped with hydraulic clamping. With a push of a button you can have arm unclamped then move vertically, or stop then clamp automatically
- CSA Electrics Standard ● Tool kit and manuals

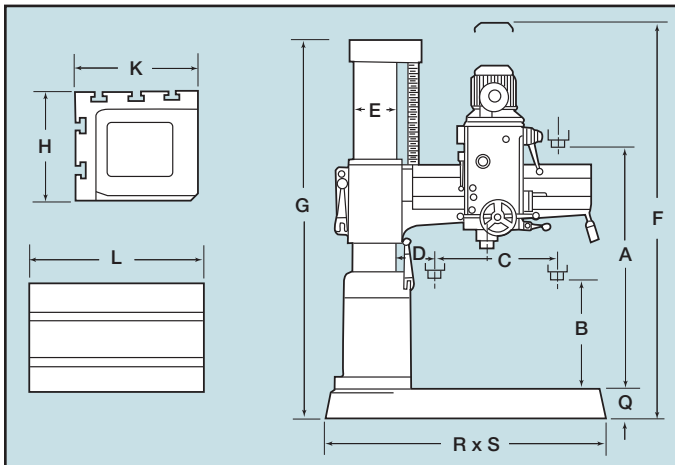
### Specifications:

Model	CL1230H
<b>Working Area:</b>	
Column Sleeve Dia. (E)	11.81" (300mm)
Column Face to Spindle Center Maximum (D+C)	46.1" (1170mm)
Minimum (D)	13.4" (340mm)
Spindle Head Travel (C)	35.0" (890mm)
Base Surface to Spindle End Maximum (A)	53.9" (1370mm)
Minimum (B)	19.3" (490mm)
Arm Vertical Travel (A-B)	24.8" (630mm)
Arm Rotation (Right & Left)	180°
Baseplate Working Surface	48" x 29.1" (1219 x 739mm)
Box Table Area	
Length (L)	25.0" (635mm)
Width (K)	24.5" (520mm)
Height (H)	16.3" (415mm)
Base Dimensions	
Floor Area (R x S)	67.9" x 28.1" (1725 x 715mm)
Height (Q)	7.1" (180mm)

<b>Drill Head:</b>	
Spindle Taper	4MT
Spindle Stroke	9.84" (250mm)
Quill Diameter	3.15" (80mm)
Number of Spindle Speeds	2
Spindle Speeds (rpm)	44-1500
Number of Feeds	3
Spindle Feed Rate (in(mm)/rev.)	0.002"/(.05mm), 0.0035"/(.09mm), 0.006"/(.15mm)
Spindle Drive Motor (2-speed)	3 hp (2.25 Kw)
Elevating Motor	1 hp (.75 Kw)
Clamping Motor	1 hp (.75 Kw)
Coolant Pump Motor	1/8 hp (.10 Kw)

<b>Dimensions and Weight:</b>	
Max. Machine Height (F)	109.5" (2780mm)
Base and Column Height (G)	81.1" (2060mm)
Shipping Dim.	
Length	80.1" (2035mm)
Width	32.5" (862mm)
Height	88.2" (2240mm)
Net Weight	4,630 lbs. (2100kg)
Shipping Weight	5,071 lbs. (2300kg)

### Dimensions:



### Capacities:

Model	CL1230H
<b>Capacity:</b>	
Drilling	
In Steel	1.65" (42mm)
In Cast Iron	2.16" (55mm)
Tapping	
In Steel	1" (25mm)
In Cast Iron	1.38" (38mm)
Boring	
In Steel	3.38" (86mm)
In Cast Iron	4.72" (120mm)



# Clausing Radial Drills

## Model: CL1250H

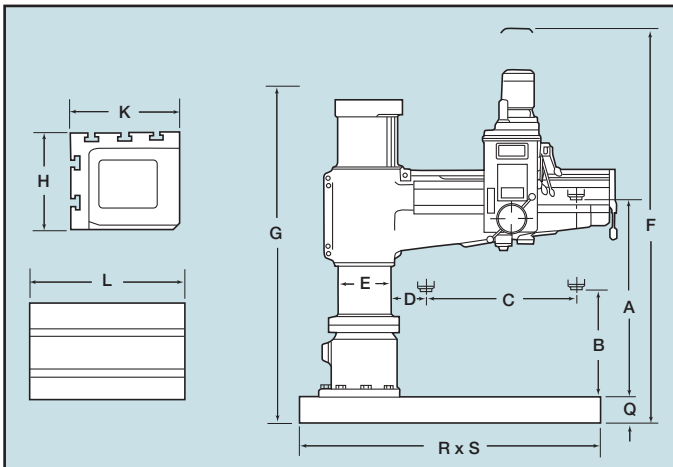
### Features and Standard Equipment:

- High-quality cast-iron arm with heat-treated and ground slides for smooth and accurate head positioning
- The bearing bracket of gear-box is fitted with standard bearings to fit arm slide for smooth gear-box operation
- High speed gears are made of Nickel-Chrome Steel and are heat-treated and ground for durability
- Powerful 5 Hp, 2-speed, heavy-duty spindle drive motor
- Overload protection device
- The main spindle is balanced by an adjustable block
- Coolant system
- Low volt and overload protection
- Equipped with hydraulic clamping. With a push of a button you can have arm unclamped then move vertically, or stop then clamp automatically
- CSA Electrics Standard ● Tool kit and manuals

### Specifications:

Model	CL1250H
<b>Working Area:</b>	
Column Sleeve Dia. (E)	11.81" (300mm)
Column Face to Spindle Center	
Maximum (D+C)	49.21" (1250mm)
Minimum (D)	14.17" (360mm)
Spindle Head Travel (C)	35.04" (890mm)
Base Surface to Spindle End	
Maximum (A)	59.95" (1345mm)
Minimum (B)	17.36" (441mm)
Arm Vertical Travel (A-B)	24.8" (630mm)
Arm Rotation (Right & Left)	180°
Baseplate Working Surface	48" x 29.1"(1219 x 739mm)
Box Table Area	
Length (L)	25.0" (635mm)
Width (K)	24.5" (520mm)
Height (H)	16.5" (420mm)
Base Dimensions	
Floor Area (R x S)	70.3" x 30.9"(1785 x 785mm)
Height (Q)	7.8" (190mm)

### Dimensions:



### Capacities:

Model	CL1250H
<b>Capacity:</b>	
Drilling	
In Steel	1.97" (50mm)
In Cast Iron	2.36" (60mm)
Tapping	
In Steel	1.57" (40mm)
In Cast Iron	1.97" (50mm)
Boring	
In Steel	4.33" (110mm)
In Cast Iron	6.55" (165mm)

<b>Drill Head:</b>	
Spindle Taper	5MT
Spindle Stroke	9.84" (250mm)
Quill Diameter	3.15" (80mm)
Number of Spindle Speeds	12
Spindle Speeds (rpm)	56-1450
Number of Feeds	3
Spindle Feed Rate (in(mm)/rev.)	0.0023"(06mm), 0.004"(10mm), 0.008"(20mm)
Spindle Drive Motor (2-speed)	5 hp (3.8 Kw)
Elevating Motor	1 hp (.75 Kw)
Clamping Motor	1 hp (.75 Kw)
Coolant Pump Motor	1/8 hp (.10 Kw)

<b>Dimensions and Weight:</b>	
Max. Machine Height (F)	104.1" (2645mm)
Base and Column Height (G)	81.9" (2080mm)
Shipping Dim.	
Length	81.1" (2060mm)
Width	39.2" (995mm)
Height	88.2" (2240mm)
Net Weight	5,071 lbs. (2300kg)
Shipping Weight	5,512 lbs. (2500kg)



# Clausing Radial Drills

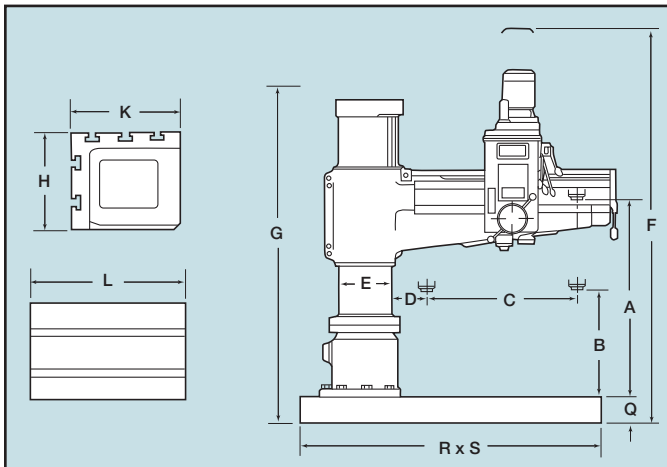
## Model: CL1600H

### Features and Standard Equipment:

- Equipped with hydraulic separate clamping unit. Vertical movement of arm is coordinated by an IC timer. With a single touch on push button switch, you can have the arm unclamped then move vertically, or stop then clamp automatically. Very easy to operate, and tools will always stay at the same point after tool shifting.
- Gears in gear box are cooled by oil cycled by an oil pump to minimize gear wear.
- Friction type disc clutch absorbs impact force caused by vertical movement of spindle, and protects all transmission units inside gear box. With quick spindle return, the clutch will help speed-up the tapping operation.
- Special automatic tool eject device is supplied to allow you to change tools quickly. (No drifter is required) Special arm elevating device is provided to prevent arm from falling down abruptly after years of usage.
- Coolant system
- CSA Electrics Standard ● Tool kit and manuals

### Specifications:

### Dimensions:



Model	CL1600H
<b>Working Area:</b>	
Column Sleeve Dia. (E)	17" (432mm)
Column Face to Spindle Center	
Maximum (D+C)	62.2" (1580mm)
Minimum (D)	17.3" (440mm)
Spindle Head Travel (C)	44.9" (1140mm)
Base Surface to Spindle End	
Maximum (A)	63" (1600mm)
Minimum (B)	15" (380mm)
Arm Vertical Travel (A-B)	33.5" (850mm)
Arm Rotation (Right & Left)	180°
Baseplate Working Surface	70.9" x 40.4" (1800 x 1026mm)
Box Table Area	
Length (L)	27.6" (700mm)
Width (K)	19.7" (500mm)
Height (H)	15.7" (400mm)
Base Dimensions	
Floor Area (R x S)	97.6" x 41.3" (2480 x 1050mm)
Height (Q)	8.26" (210mm)

### Capacities:

Model	CL1600H
<b>Capacity:</b>	
Drilling	
In Steel	2.6" (65mm)
In Cast Iron	2.75" (70mm)
Tapping	
In Steel	1.97" (50mm)
In Cast Iron	2.36" (60mm)
Boring	
In Steel	5" (126mm)
In Cast Iron	7.28" (185mm)

<b>Drill Head:</b>	
Spindle Taper	5MT
Spindle Stroke	14.6" (370mm)
Quill Diameter	3.94" (100mm)
Number of Spindle Speeds	12
Spindle Speeds (rpm)	40-1920
Number of Steps	6
Spindle Feed Rate (in(mm)/rev.)	0.003"(.07mm)-0.038"(.96mm)
Spindle Drive Motor (2-speed)	7.5 hp (5.6 Kw)
Elevating Motor	2 hp (1.5 Kw)
Clamping Motor	1 hp (.75 Kw)
Coolant Pump Motor	1/8 hp (.10 Kw)

<b>Dimensions and Weight</b>	
Max. Machine Height (F)	124.8" (3170mm)
Base and Column Height (G)	107.7" (2660mm)
Shipping Dim.	
Length	112.2" (2850mm)
Width	55.1" (1400mm)
Height	115.7" (2940mm)
Net Weight	6,614 lbs. (4900kg)
Shipping Weight	11,243 lbs. (5100kg)



# Clausing Radial Drills

## Model: CLC2500

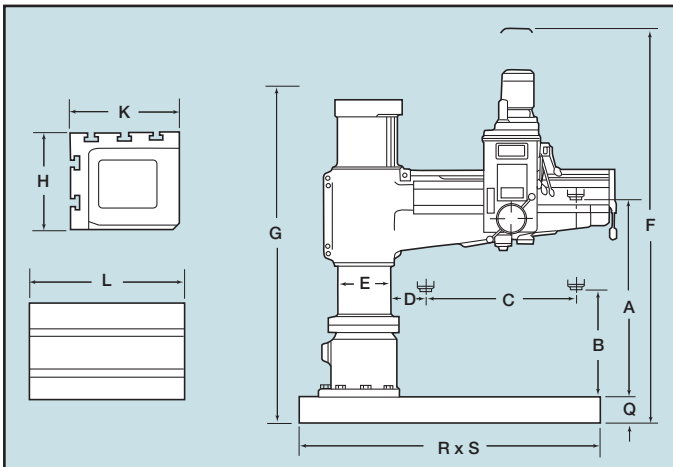
### Features and Standard Equipment:

- Equipped with hydraulic separate clamping unit. Vertical movement of arm is coordinated by an IC timer. With a single touch on push button switch, you can have the arm unclamped then move vertically, or stop then clamp automatically. Very easy to operate, and tools will always stay at the same point after tool shifting.
- Gears in gear box are cooled by oil cycled by an oil pump to minimize gear wear.
- Friction type disc clutch absorbs impact force caused by vertical movement of spindle, and protects all transmission units inside gear box. With quick spindle return, the clutch will help speed-up the tapping operation.
- Special automatic tool eject device is supplied to allow you to change tools quickly. (No drifter is required) Special arm elevating device is provided to prevent arm from falling down abruptly after years of usage.
- Coolant system
- CSA Electrics Standard ● Tool kit and manuals

### Specifications:

Model	CLC2500
<b>Working Area:</b>	
Column Sleeve Dia. (E)	21.65" (550mm)
Column Face to Spindle Center	
Maximum (D+C)	98.4" (2500mm)
Minimum (D)	19.7" (500mm)
Spindle Head Travel (C)	78.7" (2000mm)
Base Surface to Spindle End	
Maximum (A)	78.7" (2000mm)
Minimum (B)	21.6" (550mm)
Arm Vertical Travel (A-B)	39.4" (1000mm)
Arm Rotation (Right & Left)	180°
Baseplate Working Surface	86.8" x 43.4" (2205 x 1102mm)
Box Table Area	
Length (L)	39.4" (1000mm)
Width (K)	31.5" (800mm)
Height (H)	22" (560mm)
Base Dimensions	
Floor Area (R x S)	138.6" x 55.1" (3520 x 1400mm)
Height (Q)	12.6" (320mm)
<b>Drill Head:</b>	
Spindle Taper	6MT
Spindle Stroke	17.7" (450mm)
Quill Diameter	3.94" (100mm)
Number of Spindle Speeds	16
Spindle Speeds (rpm)	16-1250
Number of Steps	16
Spindle Feed Rate (in(mm)/rev.)	0.0015"(.04mm)-0.126"(3.20mm)
Spindle Drive Motor (2-speed)	10 hp (7.5 Kw)
Elevating Motor	5 hp (3.6 Kw)
Coolant Pump Motor	1/4 hp (.18 Kw)
<b>Dimensions and Weight:</b>	
Max. Machine Height (F)	157" (3990mm)
Base and Column Height (G)	151.6" (2660mm)
Shipping Dim.	
Length	158" (4000mm)
Width	63" (1600mm)
Height	151.6" (3850mm)
Net Weight	24,250 lbs. (11000kg)
Shipping Weight	27,557 lbs. (12500kg)

### Dimensions:



### Capacities:

Model	CLC2500
<b>Capacity:</b>	
Drilling	
In Steel	3.15" (80mm)
In Cast Iron	3.98" (100mm)
Tapping	
In Steel	2.56" (65mm)
In Cast Iron	2.95" (75mm)
Boring	
In Steel	6" (150mm)
In Cast Iron	10" (250mm)



Your Single Source for Machine Tools

### Clausing Precision Drills

- Clausing Belt-drive Drills
- Clausing Geared-head Drills
- Clausing Radial Drills

### Clausing Precision Mills

- Clausing Bed Mills
- Clausing CNC Bed Mills
- Clausing Knee Mills
- Clausing EVS Knee Mills

### Clausing Precision Lathes

- Clausing/Colchester Geared Head Lathes
- Clausing/Colchester Professional V.S. Lathes
- Clausing Large Swing Standard and CNC Lathes
- Clausing/Metosa Standard Lathes

### Clausing Precision Grinders

- Clausing Manual Grinders
- Clausing 2 Axes Hydraulic Grinders
- Clausing 3 Axes Hydraulic Grinders
- Clausing ASDII Automatic Grinders

### Clausing Precision Cutting Machines

- Clausing/Kalamazoo Horizontal Bandsaws
- Clausing/Kalamazoo Vertical Bandsaws
- Clausing/Kalamazoo Tilt Frame Miter Bandsaws
- Clausing/Kalamazoo Cold Saws

For detailed catalogs of the full line of Clausing Machine Tools visit our Web Site:

**[www.clausing-industrial.com](http://www.clausing-industrial.com)**

or e-mail us and request an electronic (pdf) catalog at:

**[info@clausing-industrial.com](mailto:info@clausing-industrial.com)**

*Your Authorized Clausing Precision Machine Tools Distributor*



Clausing Industrial, Inc.  
1819 North Pitcher Street  
Kalamazoo, Michigan 49007-1886  
Information: [info@clausing-industrial.com](mailto:info@clausing-industrial.com)

**Toll Free:** 800-323-0972  
**Phone:** 269-345-7155  
**Fax:** 269-345-5945  
**Web Site:** [www.clausing-industrial.com](http://www.clausing-industrial.com)