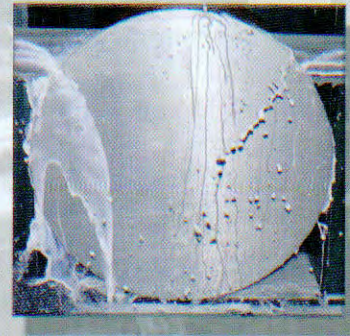
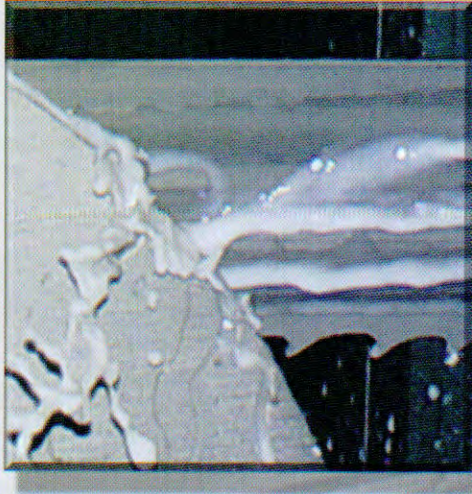


**EXCLUSIVE** **eOsen** **TECHNOLOGY**

**GE Fanuc Control with**

# **V\_Drive**



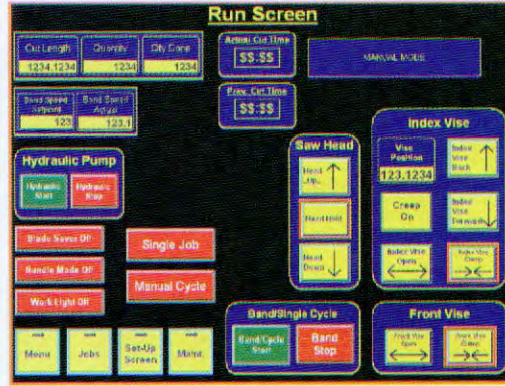
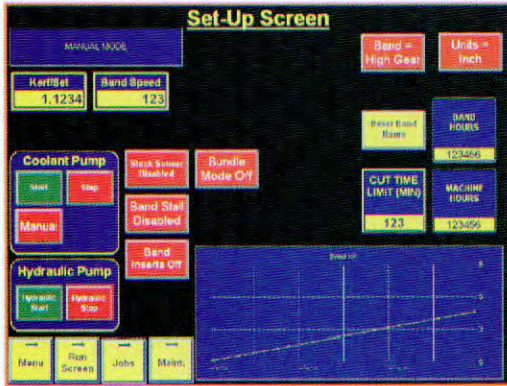


Cosen Saws, USA is proud to announce the newest in vector drive blade control.

Cosen's **V\_Drive** continuously monitors cutting conditions and adapts to allow for Optimum Cutting.

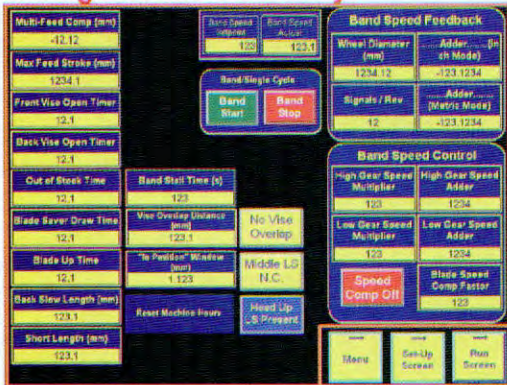
# V\_Drive

**Ease of use:**



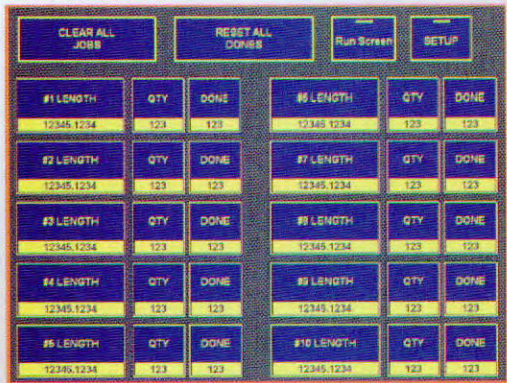
Simple intuitive touch screen controls all machine functions.

**Management Traceability:**

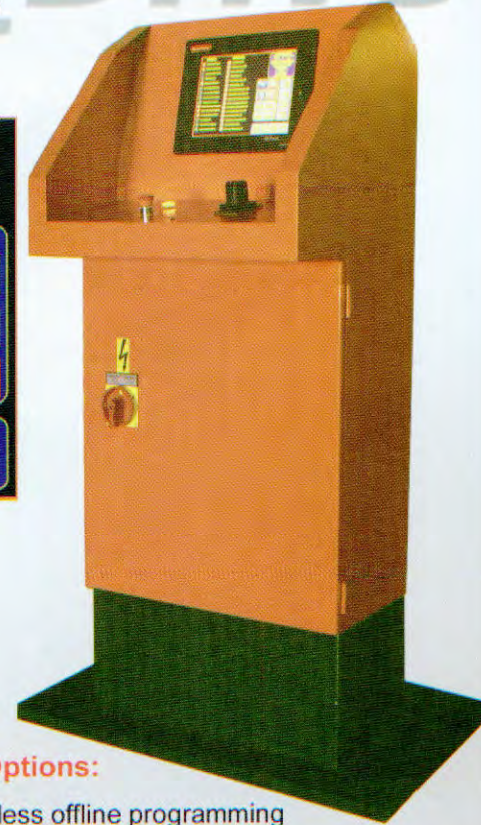


**V\_Drive** gives you the ability to monitor cut times, the ability to program offline, and run maintenance.

**Job Screen:**



Closely monitor and program each job.

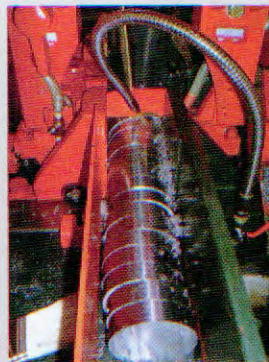


**Flexibility of Options:**

- Wired or Wireless offline programming
- Sonic measurement
- Laser measurement
- Material handling integration
- Secondary operation integration
- Cut data management

**Benefits:**

- Machine Cuts " low machinability " materials with ease
- Significant Time savings with the **V\_Drive** system:
  - Typically a 25% - 50% improvement
- Reduced Tooling costs per piece cut
  - Approximately 25% + savings
- Tight tolerances and square cuts
- Improved Finishes
- Quieter Cutting via vibration dampening
- Control is simple to use, shows cut times, provides fault finding features about the machine.



**V\_Drive** gives the ability to cut hard-to-cut materials like Titanium, Hastelloy and other nickel based metals at significantly increased rates.

**V\_Drive** also has shown significant improvements in blade life. That's contrary to all logic. Cut faster and get better blade life.

**Cosen's V\_Drive ensures that you will cut more for less!**



*"The Pinnacle of Cutting Performance"*