

## COMPLETE METALWORKING SOLUTIONS

(800) 991-4225

[www.ahbinc.com](http://www.ahbinc.com)

ISO Certified

[customerservice@ahbinc.com](mailto:customerservice@ahbinc.com)

AROSTOP systems can be used both to the left and right side of the machine they can be used with a sawing machine, drilling machine, horizontal press, punching machine or iron worker.

### Transport

The systems are modular in transport friendly lengths and are delivered in a solid wooden transport box.



RELIABLE SAWS. RELIABLE PEOPLE.  
877-276-SAWS [www.HYDMECH.com](http://www.HYDMECH.com)

# AROSTOP

**PREVENT MEASUREMENT AND PRODUCTION ERRORS**

**SAVE TIME AND COSTS**



MEASURING SYSTEMS DIGITAL

LENGTH STOP SYSTEMS

PUSH SYSTEMS





# MODELS

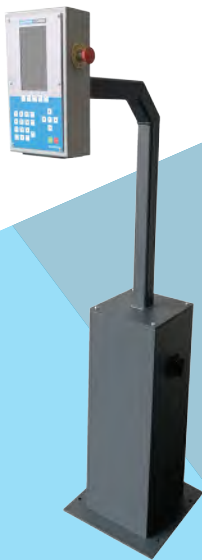
Type	Execution					
AS 30	M	Digital	S	Length measuring Automatic	A	Pusher Automatic
AS 65			S	Length measuring Automatic	A	Pusher Automatic

AROSTOP AS 30 is suitable for machines with a clamping capacity up to 350 mm.

AROSTOP AS 65 is suitable for machines with a clamping capacity from 350 mm.

# MODEL AS 65 A

- Automatic length push-in system.
- Foldable automatic moving push-up trailer.
- Control panel in upright column.
- 45 mm linear guide mounted on angular steel profile.
- Applicable on the right and left side of the machine.
- 7” colour screen.
- Reading in saw frames.
- Program storage in memory or externally.



**Basic component 2075 mm  
Extension 1925 mm**

**Various options:**

- **Roller tables**
- **Vice manual / pneumatic vice**
- **Safety protections**
- **Barcode reader**
- **Control box on high arm**
- **Connection kit for fully automatic**

**ROBUST AND PRECISE**

# MODEL AS 30 S

- Automatic length stop system.
- Automatic flip over stop.
- Control panel in upright column.
- Linear guide of 30 mm mounted on angular steel profile.
- Applicable on the right and left side of the machine.
- 7" colour screen.



**Basic component 2075 mm  
Extension 1925 mm**

## Various options:

- Roller tables
- Measuring tongue
- Automatic retraction
- Barcode reader
- Control box on high arm



# MODEL AS 30 A

- Automatic length push-in system.
- Automatic flip over stop.
- Control panel in upright column.
- Linear guide of 30 mm mounted on angular steel profile.
- Applicable on the right and left side of the machine.
- 7" colour screen.
- Reading in sawlists.
- Program storage in memory or externally.



**Basic component 2075 mm  
Extension 1925 mm**

## Various options:

- Roller tables
- Vice manual / pneumatic vice
- Safety protections
- Barcode reader
- Control box on high arm
- Connection kit for fully automatic





# MODEL AS 65 S

- Automatic length stop system.
- Automatic travel flip over stop.
- Control panel in upright column.
- 45 mm linear guide mounted on angular steel profile.
- Applicable on the right and left side of the machine.
- 7" colour screen.



**Basic component 2075 mm**  
**Extension 1925 mm**

## Various options:

- Roller tables
- Measuring tongue
- Automatic retraction
- Barcode reader
- Control box on high arm

# MODEL AS 30 M

- Digital manual length measurement system.
- Manual flip over stop
- Linear guide of 30 mm mounted on steel angular profile.
- Applicable on the right and left of the machine.



**Basic component 2075 mm**  
**Extension 1925 mm**

## Various options:

- Roller tables
- Measuring tongue