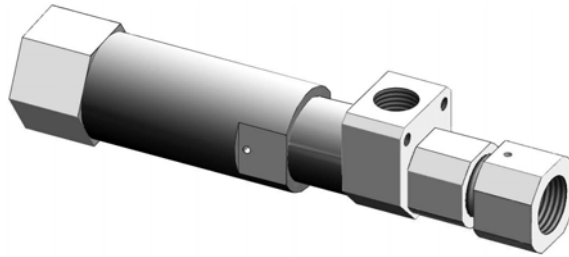




12941 Bleed down valve 2



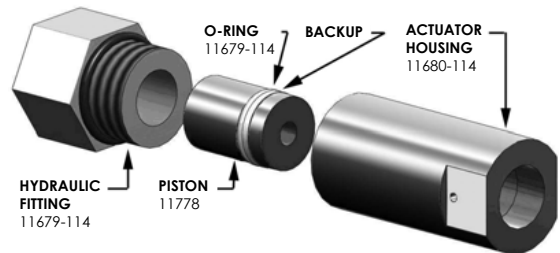
The pump bleed-down valve discharges high pressure water from the pump when the pump is turned off. It operates as a normally open safety valve and is controlled by a hydraulic solenoid valve. The bleed-down valve is located inside behind the utility panel at the rear of the pump.

Kit installation procedure:

Valve repair kit *12981* contains one each of the following:

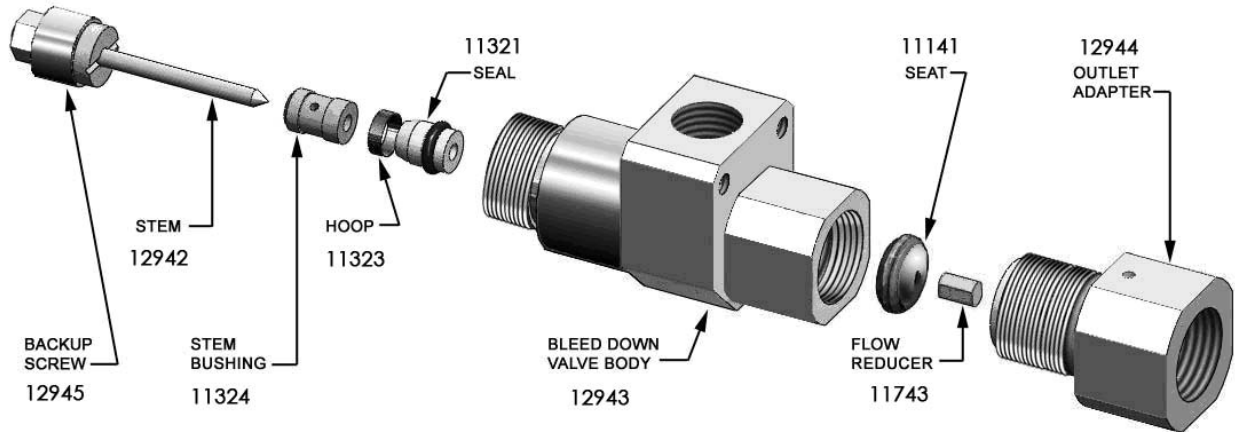
11323 Seal Hoop	11324 Bushing
12942 Needle(Stem)	11141 Poppet Seat
11321 Seal, FL	12880-908 O-ring (Sae fitting for Hydraulic hose if needed)
12880-912 O-ring	11679-114 O-ring
11680-114 O-ring	11447 Vacuum Grease Packet

1. **Shut down** the system.
2. **Remove** the hydraulic hose from the bleed-down valve and gland nut connection from the water drain tubing to the bleed-down valve.
3. **Remove** the gland nut from the collar at the high-pressure port of the bleed-down valve.
4. **Disconnect** the actuator from the high pressure valve assembly. Remove all the hydraulic fittings from the actuator housing.
5. **Remove** the adapter from the bleed-down valve body. Remove and discard the HP seat.
6. **Remove** all the internal components from the Bleed Down Valve body.
7. **Push** the piston out of the Actuator Housing body through the oil port. Discard the o-ring and backup ring from the piston.
8. **Clean** all parts before the new parts are inserted.
9. **Lubricate** the new o-ring and backup ring with grease from packet and install the rings in the same order as the old o-rings (right). Install the piston assembly carefully into the actuator body until it is seated securely and no damage is caused to the o-ring.
10. **Secure** the Hydraulic fitting to the end of the actuator housing.
11. Apply Blue Goop to both sides of the Seat and to the flow reducer and place them into the valve body as shown. Tighten the outlet adapter on the end to secure the parts.



12. Place the stem flat side out, into the backup screw. Place the stem bushing, hoop, and seal on the stem in the order shown below. The seal should fit into the hoops sharp side. Use HP lubricant to *lubricate* the OD of the seal and o-ring before they are inserted into the valve body.

13. Push the assembled into the valve body and use a 5/16 socket tool to screw the backup screw securely into the valve body.



14. Apply Blue Goop to the threads of the Bleed Down valve body and secure the valve to the Actuator housing.

15. Reinstall the bleed-down valve in the machine by attaching the gland nut to the high pressure collar at the high pressure port of the valve. Torque nut to **35 ft-lb.**

16. Install the gland nut connecting the water drain tubing to the bleed-down valve.

17. Reattach the hydraulic hose to the oil port of the bleed-down valve.

*The intensifier is now ready for use. Turn pump on and check for any leakage.