



JET®

WAREHOUSE AND DOCK

PRODUCTIVITY THROUGH INNOVATION

JETTOOLS.COM

J E T[®]

TABLE OF CONTENTS

PALLET TRUCKS 3-6

J SERIES
PTX SERIES
W SERIES
JTX SERIES

SCISSOR LIFT TABLES 7-8

SLT JUMBO
DSLT AND SLT

STACKERS 9

JHS HYDRAULIC

SERVICE AND PLATFORM CARTS 10

SC AND PUC SERVICE CARTS

PLATFORM CARTS AND DOLLIES 11

DRUM HANDLING 12

BARREL PUMPS
DRUM DOLLIES
PALLET PULLERS

MATERIAL HANDLING 13

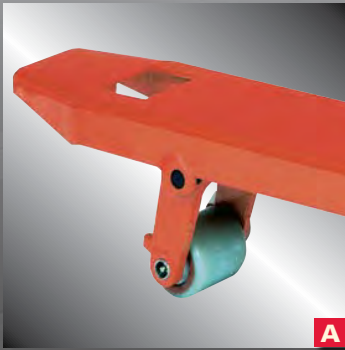
RATCHET STRAPS
LOAD BINDERS

WARRANTY INFORMATION 14

***OVER 50 YEARS OF
QUALITY, INNOVATION
AND SERVICE***



For over 50 years, no other company has provided the level of expertise and dependability like JET[®]. When you buy a JET product, you are buying the results of countless hours of research, design, engineering and manufacturing from around the world. Each JET product is built with the most innovative features and highest quality within its respective product class. Combine that with the industry's most competitive warranty plus award-winning customer service and you get a value that is impossible to pass up.

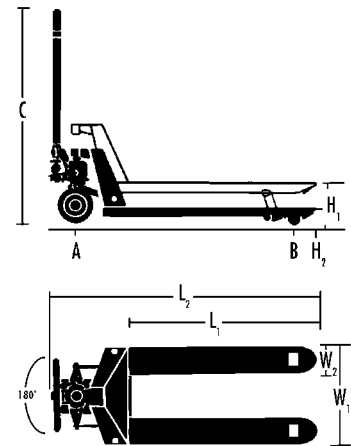


A. Rounded Fork Tips
B. Solid Steel Push Rod

C. Heavy-Duty Hydraulic Pump

FEATURES

- 5,000 pound capacity
- High-quality welded steel construction with a durable powder coat finish
- 2-1/2" low profile design for smaller size pallet openings
- Easy-to-use with single hand operation, fingertip controls and 180° turning radius
- Extra wide poly-over-steel steer wheels provide a smooth, quiet ride with added traction and stability
- Wheel bearings are double sealed and lifetime lubricated



DIMENSIONS (IN)

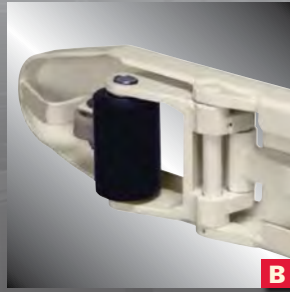
Stock Number	Model	W1 (in)	W2 (in)	L1 (in)	L2 (in)	H1 (in)	H2 (in)	A (in)	B (in)	C (in)	Weight (lbs)
140016	PT-1636J	16	6	36	51	6-1/4	2-1/2	6-1/4 X 2-3/4	2-1/2 X 3-3/4	45-1/8	150
140085	PT-2036J	20-1/2	6	36	51	6-1/4	2-1/2	6-1/4 X 2-3/4	2-1/2 X 3-3/4	45-1/8	154
140084	PT-2042J	20-1/2	6	42	57	6-1/4	2-1/2	6-1/4 X 2-3/4	2-1/2 X 3-3/4	45-1/8	161
140083	PT-2048J	20-1/2	6	48	63	6-1/4	2-1/2	6-1/4 X 2-3/4	2-1/2 X 3-3/4	45-1/8	172
140082	PT-2736J	27	6	36	51	6-1/4	2-1/2	6-1/4 X 2-3/4	2-1/2 X 3-3/4	45-1/8	174
140081	PT-2742J	27	6	42	57	6-1/4	2-1/2	6-1/4 X 2-3/4	2-1/2 X 3-3/4	45-1/8	185
140080	PT-2748J	27	6	48	63	6-1/4	2-1/2	6-1/4 X 2-3/4	2-1/2 X 3-3/4	45-1/8	196



PTX SERIES PALLET TRUCKS



PALLET TRUCKS

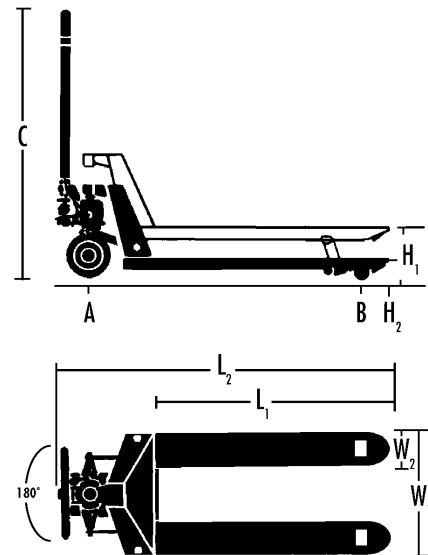


- A. Ergonomic Grip**
- B. Rounded Fork Tips With Nylon Guide Rollers**
- C. One-Piece Cast Iron Pump**



FEATURES

- 5,500 pound capacity
- 2-1/2" lowered height
- 210° turning radius
- One piece cast iron pump features high quality seals, hardened and chrome-plated ram and piston, top-of-stroke and overload bypass valves
- Rounded fork tips with nylon guide rollers for trouble-free pallet entry and exit
- Solid Steel push rod never needs adjusting
- Extra wide poly over aluminium steer wheels feature double sealed, lifetime lubricated bearings.



DIMENSIONS

Stock Number	Model	W1 (in)	W2 (in)	L1 (in)	L2 (in)	H1 (in)	H2 (in)	A (in)	B (in)	C (in)	Weight (lbs)
140091	PTX-2048	20	6	48	51	6-1/4	2-1/2	7 X 2	2-1/2 X 3-3/4	47-1/4	172
140092	PTX-2036	20	6	36	51	6-1/4	2-1/2	7 X 2	2-1/2 X 3-3/4	47-1/4	150
140093	PTX-2748	27	6	48	63	6-1/4	2-1/2	7 X 2	2-1/2 X 3-3/4	47-1/4	196

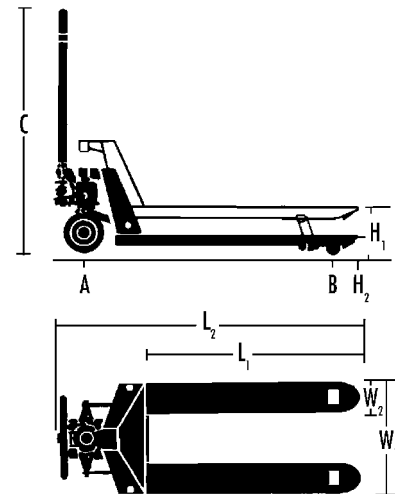


A. Ergonomic Grip

B. Nylon Entry Rollers

FEATURES

- 6,000 pound capacity
- 200° turning radius allows room to maneuver in tight quarters
- Articulating 7" poly-over-aluminum steer wheels ensure continual contact with uneven floors
- One-piece cast pump features high quality seals, hardened and chrome plated ram and piston, top-of-stroke and overload safety bypass valves
- Single point valve replacement for quick and easy rebuild
- Rounded fork tips with nylon guide rollers for trouble-free pallet entry and exit
- Solid steel push rods never need adjustment
- Wheel bearings are double sealed and lifetime lubricated



DIMENSIONS

Stock Number	Model	W1 (in)	W2 (in)	L1 (in)	L2 (in)	H1 (in)	H2 (in)	A (in)	B (in)	C (in)	Weight (lbs)
140170	PT-2036W	20-1/2	6-1/4	36	52-1/2	7-3/4	2-7/8	7 X 2	2-7/8 X 3-11/16	47	170
140171	PT-2042W	20-1/2	6-1/4	42	58-1/2	7-3/4	2-7/8	7 X 2	2-7/8 X 3-11/16	47	179
140172	PT-2048W	20-1/2	6-1/4	48	64-1/2	7-3/4	2-7/8	7 X 2	2-7/8 X 3-11/16	47	187
140174	PT-2742W	27	6-1/4	42	58-1/2	7-3/4	2-7/8	7 X 2	2-7/8 X 3-11/16	47	192
140175	PT-2748W	27	6-1/4	48	64-1/2	7-3/4	2-7/8	7 X 2	2-7/8 X 3-11/16	47	200



JTX SERIES PALLET TRUCKS



PALLET TRUCKS



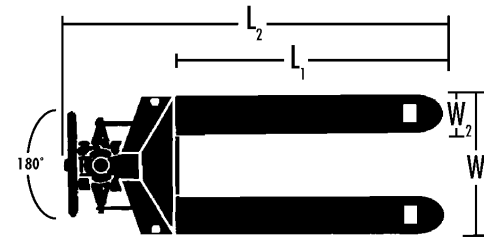
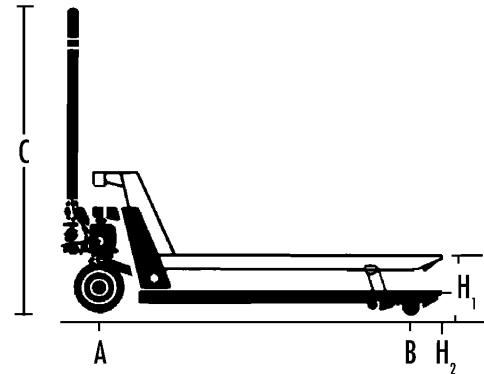
A. Ergonomic Grip
B. Nylon Entry Roller

C. One-Piece Cast Iron Grip



FEATURES

- 8,000 pound capacity
- One-piece cast pump features high quality seals, hardened and chrome plated ram and piston, top-of stroke and overload bypass valves
- Rounded fork tips with nylon guide rollers for trouble-free pallet entry and exit
- Solid steel push rods never need adjustment
- 210° turning radius
- Large 8" poly over aluminium steering wheels feature double sealed, lifetime lubricated bearings



DIMENSIONS

Stock Number	Model	W1 (in)	W2 (in)	L1 (in)	L2 (in)	H1 (in)	H2 (in)	A (in)	B (in)	C (in)	Weight (lbs)
140800	JTX-2748	27	6-1/4	48	63-1/2	6-1/4	3-1/4	8 x 2	3-1/4 x 3-1/2	49-1/4	240



SCISSOR LIFT
TABLES



SLT SERIES JUMBO SCISSOR LIFT TABLE FEATURES

- Lift, position and transport heavy loads with ease
- Heavy-duty steel frame and extra large table surface
- Easy-to-use hydraulic foot pump raises table to multiple heights
- Quick lifting action with no load
- Foot operated parking brake on swivel casters

SLT SERIES JUMBO SCISSOR LIFT TABLE DIMENSIONS

Stock Number	Model	Capacity (lbs)	Minimum Height (in)	Maximum Height (in)	Table Length (in)	Table Width (in)	Overall Length (in)	Handle Height (in)	Number of Strokes to Reach Maximum Height	Weight (lbs)
140780	SLT-1100	1100	11-1/8	36	63	31-1/2	73-1/2	37	33	292

DSL T AND SL T SCISSOR LIFT TABLES



SCISSOR LIFT TABLES



DSL T SERIES DOUBLE SCISSOR LIFT TABLE FEATURES

- Ergonomic answer to preventing back injuries
- Heavy-duty steel frame and table
- Smooth rolling poly over nylon casters, two swivel and two fixed with parking brake
- Easy-to-use hydraulic foot pump raises table to multiple heights
- Quick lifting action with no load
- Safety overload and top-of-stroke bypass system provides maximum pump protection

DSL T SERIES DOUBLE SCISSOR LIFT TABLE DIMENSIONS

Stock Number	Model	Capacity (lbs)	Minimum Height (in)	Maximum Height (in)	Table Length (in)	Table Width (in)	Overall Length (in)	Handle Height (in)	Number of Strokes to Reach Maximum Height	Weight (lbs)
140778	DSL T-770	770	13-9/16	51-1/8	35-5/8	20-1/8	45-3/4	37-1/4	21	235

SL T SERIES SCISSOR LIFT TABLE FEATURES

- Ideal for lifting, positioning and transporting heavy materials around the shop, factory, warehouse or office
- Ergonomic answer to preventing back injuries
- Heavy-duty steel frame and table
- Smooth rolling poly over nylon casters, two swivel and two fixed with parking brake
- SL T-1650 model features rugged poly over steel casters
- Easy-to-use hydraulic foot pump raises table to multiple heights
- Quick lifting action with no load
- Safety overload and top-of-stroke bypass system provides maximum pump protection
- SL T-330F and SL T-660F models feature fold-down handles

SL T SERIES SCISSOR LIFT TABLE DIMENSIONS

Stock Number	Model	Capacity (lbs)	Minimum Height (in)	Maximum Height (in)	Table Length (in)	Table Width (in)	Overall Length (in)	Handle Height (in)	Number of Strokes to Reach Maximum Height	Weight (lbs)
140771	SL T-330F	330	8-5/8	28-3/4	27-1/2	17-3/4	36	34-1/8	16	91
140777	SL T-660F	660	10-5/8	32-3/8	32-1/2	19-5/8	40-1/2	37-13/16	13	158
140779	SL T-1650	1650	16	38-5/8	39-3/8	20-1/8	52-1/2	38-1/2	15	243



STACKERS



JHS HYDRAULIC STACKER FEATURES

- Economical and ergonomic way to handle standard 40" x 48" pallets
- Works like a manual forklift to load or unload trucks or stock shelves
- Heavy-duty welded steel frame with a durable powder coat finish
- Powerful two-stage hydraulic pump features quick-lift with no load, top-of-stroke and safety overload bypass system
- Heavy-duty dual roller chain for exceptional strength
- Adjustable width forks and outrigger legs handle all pallet sizes
- Safety cage provides great visibility
- No tools required for optional steel platform

JHS HYDRAULIC STACKER DIMENSIONS

Stock Number	Model	Capacity (lbs)	Pallet Capacity (lxw/in)	Load Center (in)	Maximum Lift Height (in)	Minimum Fork Height (in)	Turning Radius (degrees/in)	Handle Force Required At Capacity (lbs)	Handle Strokes to Reach Maximum height	Fork Dimensions (in)
140521	JHS-2200	2200	48 x 40	20	59	2-3/4	360/50	85	44/70	41-3/4 x 5-1/4 x 2-1/4
		Outrigger Size (wxh/in)	Overall Fork Width Min./Max. (in)	Outrigger Inner Width Min./Max. (in)	Outrigger Outer Width Min./Max. (in)	Load Wheel Size (odxw/in)	Caster Size (odxw/in)	Overall Dimensions (lxwxh/in)	Weight (lbs)	
		4x3-1/2	11/27-1/2	34-1/4/50-1/2	42/58-384	5x3-1/4	7x2	62x42x78	548	

JWS SERIES WINCH STACKER FEATURES

- Simple, easy way to lift, lower and transport heavy loads with minimum effort
- Heavy-duty welded steel frame with a durable powder coat finish
- Low effort hand winch equipped with automatic brake system and adjustable length handle
- Easy to maneuver with large diameter swivel casters
- Swivel casters feature foot brake to prevent movement
- Adjustable width forks and legs provide versatility
- Safety cage provides great visibility

JWS SERIES WINCH STACKER DIMENSIONS

Stock Number	Model	Capacity (lbs)	Pallet Capacity (lxw/in)	Load Center (in)	Maximum Lift Height (in)	Minimum Fork Height (in)	Turning Radius (degrees/in)	Handle Force Required At Capacity (lbs)	Handle Strokes to Reach Maximum height	Fork Dimensions (in)
140501	JWS-770	770	48x40	18	59	3	360/31	16	33	36x3x1-3/4
		Outrigger Size (wxh/in)	Overall Fork Width Min./Max. (in)	Outrigger Inner Width Min./Max. (in)	Outrigger Outer Width Min./Max. (in)	Load Wheel Size (odxw/in)	Caster Size (odxw/in)	Overall Dimensions (lxwxh/in)	Weight (lbs)	
		2-3/8x2-3/8	6-3/8/30	33-1/2/49-1/2	39/59	3-1/4x2	6x1-1/4	59x39-1/2x73	248	

SC AND PUC SERVICE CARTS AND APT PLATFORM CARTS



SERVICE AND PLATFORM CARTS



SC SERIES SERVICE CART FEATURES

- 3-1/2" deep metal trays are reversible and hold up to 250 pounds each
- Rugged, metal trays have rolled edge for added strength
- 14 gauge support brackets; 20 gauge trays
- 5" hard rubber casters, two swivel, two fixed for ease in maneuvering
- Perfect for use in offices, shops, warehouses, etc.

SC SERIES SERVICE CART SPECIFICATIONS

Stock Number	Model	Capacity (lbs)	Tray Size (wxlxd/in)	Overall Height (in)	Weight (lbs)
140024	SC-2436	500	24 x 36 x 3-1/2	32	48

PUC SERIES HEAVY-DUTY RESIN SERVICE CARTS FEATURES

- Heavy-duty resin construction resists dents, chips and rust
- Round corners mean no sharp edges to nick walls or furniture
- Handle had built in storage bins
- Large, quiet non-marking 5" casters

PUC SERIES HEAVY-DUTY RESIN SERVICE CARTS SPECIFICATIONS

Stock Number	Model	Capacity (lbs)	Shelf Size (lxw/in)	Upper Shelf Height (in)	Height Between Shelves (in)	Lower Shelf Height (in)	Caster Size (in)	Overall Size (lxwxh/in)	Weight (lbs)
140018	PUC-3117	550	31-1/8 x 17-1/8	33-1/2	19-1/2	6	5 x 1	39-3/4 x 17-1/8 x 33-1/2	40
140019	PUC-3725	550	37-3/8 x 25-5/8	33-1/2	19-1/2	6	5 x 1	46 x 25-5/8 x 33-1/2	42



PLATFORM
CARTS & DOLLIES



FOLD DOWN PLATFORM CARTS FEATURES

- Heavy gauge steel construction with large nonskid platform
- Ideal for transporting loads up to 660 pounds around the shop or office
- Vinyl perimeter bumper protects walls, doorways, furniture, etc.
- Folding handle for compact storage
- Smooth rolling 5" hard rubber casters, two swivel and two fixed on FDPT-660
- Large 8" pneumatic casters, two swivel and two fixed, for handling delicate items or rolling over rough surfaces on FDPT-660P

FOLD DOWN PLATFORM CARTS SPECIFICATIONS

Stock Number	Model	Capacity (lbs)	Platform Size (wxl/in)	Handle Height (in)	Wheel Size (in)	Wheel Type	Weight (lbs)
140021	FDPT-660	660	24 x 36	34-1/4	5	Rubber	58
140022	FDPT-660P	660	24 x 36	37-3/4	8	Pneumatic	73

HARDWOOD DOLLIES FEATURES

- Use JET hardwood dollies for moving furniture, bulky crates and many other items
- Kiln dried oak used to prevent warping or shrinkage
- Countersunk bolt holes to provide a smooth working surface
- Oak is sealed with varnish for moisture protection
- Heavy-duty zinc plated casters feature double race bearings
- Non-marking 4" x 1-1/4" polyolefin tread that resists oil, water and impact
- 1000 pounds maximum capacity for evenly distributed load

HARDWOOD DOLLIES SPECIFICATIONS

Stock Number	Model	Bed Type	Size (lwx/in)	Weight (lbs)
140100	WDF-2416	Flush End	24 x 16	17
140101	WDF-3018	Flush End	30 x 18	22
140103	WDS-2416	Solid Top	24 x 16	20
140104	WDS-3018	Solid Top	30 x 18	25
140105	WDS-3624	Solid Top	36 x 24	30
140106	WDC-3018	Carpet End	30 x 18	16
140107	WDC-3624	Carpet End	36 x 24	17
140108	WDR-3018	Rubber End	30 x 18	16



140120



140001



BARREL PUMPS FEATURES

- For dispensing gasoline, diesel fuel, kerosene, machine oil, transmission fluid, hydraulic fluid, and similar light petroleum based products
- Strong die cast aluminum construction
- Fits 15 to 55 gallon drums with 2" bung openings
- Includes 39-1/4" inlet pipe, and bung adapter.
- Not for use with solvents, acids, alkalis, water or other corrosive liquids

BARREL PUMP SPECIFICATIONS

Stock Number	Model	Pump Type	Inlet Size (npt/in)	Delivery Volume	Overall Length (in)	Weight (lbs)
140035	RHP-80	Rotary Vane	1	7-10 GPM	51-1/2	10

DRUM DOLLIES FEATURES

- Strong and durable dollies easily transport up to 55 gallon drums
- Welded steel frame with 3-1/8" cross straps features powder coat finish
- Heavy-duty zinc plated casters feature double race bearings
- Non-marking 3"x1-1/4" polyolefin treads that resist oil, water and impact

DRUM DOLLIES SPECIFICATIONS

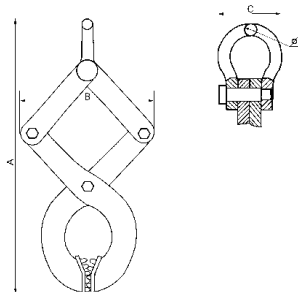
Stock Number	Model	Capacity (lbs)	Drum Size (gal)	Inside Diameter (in)	Weight (lbs)
140120	DD-30	700	30	1-3/4	19
140121	DD-55	900	55	23-3/4	28

PAPL SERIES PALLET PULLERS FEATURES

- Heavy-duty solid steel pallet pullers are designed to pull pallets across a smooth floor
- Heat treated, carbon steel teeth
- For unloading trucks at ground level
- Extends forklift reach
- Single scissor action provides superior grip
- Not designed to be used for lifting

PAPL SERIES PALLET PULLERS SPECIFICATIONS

Stock Number	Model	Capacity (lbs)	Weight (lbs)
140001	PAPL-1	2000	13
140002	PAPL-2	4000	21



A Max.	A Min.	B Max.	B Min.	C	D	E Max.	E Min.
16-1/4	10-1/4	12-3/16	10-13/16	2-13/16	5/8	4	1-1/8
21-3/4	13-3/8	15-3/8	12-3/16	3-3/8	13/16	7-7/8	1-1/8

RATCHET STRAPS, LOAD BINDERS AND TRANSPORT CHAINS

JetTools.com



MATERIAL HANDLING



RATCHET STRAPS FEATURES

- Designed to hold loads in place on trucks, rail cars, ships and other freight carriers
- Easy to attach and remove with 18" fixed length
- Heavy-duty quick action ratchet draws strap tight over the load
- Strap is weather resistant, low stretch 2-ply polyester
- Red color core provides warning that strap is damaged and must be replaced

- Zinc coated steel components to inhibit rust
- Flat hook or J-hook style available
- Complies with US Dot regulations

▲WARNING

- Do not exceed working load limit
- Read owners manual for additional warnings and precautions

RATCHET STRAPS SPECIFICATIONS

Stock Number	Model	Working Load Limit (lbs)	Break Strength (lbs)	Hook Type	Web Strap Width (in)	Web Strap Length (ft)	Fixed Strap Length (in)	Weight (lbs)
583230	RSA-6F	2000	6000	Flat	2	27	18	6
583231	RSA-10F	3300	10000	Flat	2	27	18	7
583232	RSA-6J	2000	6000	J	2	27	18	6
583233	RSA-10J	3300	10000	J	2	27	18	7

LOAD BINDERS FEATURES

- Drop forged heat treated alloy steel construction
- Take up slack and secure chain around cargo in one operation
- Easy-to-use with lever or ratchet type handle and 360° swivel hooks
- Durable rust resistant powder coat finish
- Complies with US DOT regulations

▲WARNING

- Do not exceed working load limit
- Read owners manual for additional warnings and precautions

LOAD BINDERS SPECIFICATIONS

Stock Number	Model	Min./Max. Chain Size (in)	Handle Length (in)	Take Up (in)	Working Load Limit (lbs)	Weight (lbs)
583246	LB-8	3/16 / 1/4	11-7/8	2-3/4	2600	4
583245	LB-19	5/16 / 3/8	15-3/4	4	5400	9
583247	LB-28	3/8 / 1/2	18-1/2	4	9200	12
583248	RLB-19	5/16 / 3/8	14	8	5400	11

WARRANTY AND SERVICE

Walter Meier (Manufacturing) Inc., warrants every product it sells. If one of our tools needs service or repair, one of our Authorized Service Centers located throughout the United States can give you quick service. In most cases, any of these Walter Meier Authorized Service Centers can authorize warranty repair, assist you in obtaining parts, or perform routine maintenance and major repair on your JET® tools. For the name of an Authorized Service Center in your area call 1-800-274-6848.

MORE INFORMATION

Walter Meier is consistently adding new products to the line. For complete, up-to-date product information, check with your local Walter Meier distributor, or visit jettools.com.

WARRANTY

JET products carry a limited warranty which varies in duration based upon the product. (MW = Metalworking, WW = Woodworking)



Pallet Trucks
Stackers
Pallet Pullers
Ratchet Straps
Load Binders

WHAT IS COVERED?

This warranty covers any defects in workmanship or materials subject to the exceptions stated below. Cutting tools, abrasives and other consumables are excluded from warranty coverage.

WHO IS COVERED?

This warranty covers only the initial purchaser of the product.

WHAT IS THE PERIOD OF COVERAGE?

The general JET warranty lasts for the time period specified in the product literature of each product.

WHAT IS NOT COVERED?

This warranty does not cover defects due directly or indirectly to misuse, abuse, negligence or accidents, normal wear-and-tear, improper repair or alterations, or lack of maintenance.

HOW TO GET SERVICE

The product or part must be returned for examination, postage prepaid, to a location designated by us. For the name of the location nearest you, please call 1-800-274-6848.

You must provide proof of initial purchase date and an explanation of the complaint must accompany the merchandise. If our inspection discloses a defect, we will repair or replace the product, or refund the purchase price, at our option.

We will return the repaired product or replacement at our expense unless it is determined by us that there is no defect, or that the defect resulted from causes not within the scope of our warranty in which case we will, at your direction, dispose of or return the product. In the event you choose to have the product returned, you will be responsible for the shipping and handling costs of the return.

HOW STATE LAW APPLIES

This warranty gives you specific legal rights; you may also have other rights which vary from state to state.

LIMITATIONS ON THIS WARRANTY

WALTER MEIER LIMITS ALL IMPLIED WARRANTIES TO THE PERIOD OF THE LIMITED WARRANTY FOR EACH PRODUCT. EXCEPT AS STATED HEREIN, ANY IMPLIED WARRANTIES OR MERCHANTABILITY AND FITNESS ARE EXCLUDED. SOME STATES DO NOT ALLOW LIMITATIONS ON HOW LONG THE IMPLIED WARRANTY LASTS, SO THE ABOVE LIMITATION MAY NOT APPLY TO YOU.

WALTER MEIER SHALL IN NO EVENT BE LIABLE FOR DEATH, INJURIES TO PERSONS OR PROPERTY, OR FOR INCIDENTAL, CONTINGENT, SPECIAL, OR CONSEQUENTIAL DAMAGES ARISING FROM THE USE OF OUR PRODUCTS. SOME STATES DO NOT ALLOW THE EXCLUSION OR LIMITATION OF INCIDENTAL OR CONSEQUENTIAL DAMAGES, SO THE ABOVE LIMITATION OR EXCLUSION MAY NOT APPLY TO YOU.

Walter Meier sells through distributors only. The specifications in WMH catalogs are given as general information and are not binding. Members of Walter Meier reserve the right to effect at any time, without prior notice, those alterations to parts, fittings, and accessory equipment which they may deem necessary for any reason whatsoever. **JET® branded products are not sold in Canada by Walter Meier.**



MIXED

20" x 24" x 2"

16" x 20" x 2"

4

JET
5,000 LB
CAPACITY

JET

JET

