

: radprofile

CNC programming for your laser, plasma, waterjet and flame cutting machines

Radprofile provides your operators with the tools they require to reduce lead times and optimize your laser, plasma, waterjet and flame cutting machines. Designed to seamlessly integrate with Radpunch, the Radan punch/profile solution delivers optimization for punch profile combination machine tools.

Seamless Programming

Radprofile seamlessly integrates the whole programming process of geometry creation, nesting, cut path profiling, sequencing, code generation and finally DNC connectivity to the machine controller. The seamless integration delivered by Radprofile provides an easier to use experience for your operators, while accuracy and consistency of programming is maintained with the collation of process critical data in the Manufacturing Database (MDB). Material, lead-ins, lead-outs, tagging, and machine tool specific cutting technology data are stored in the MDB in readiness for instantaneous distribution when required to assist an operator or automated process. Understanding the sophistication and the limits of each machine tool individually is the key to driving it efficiently; Radprofile will assist your operators to optimize your manufacturing capacity to within those limits for all of your machines.

Process Optimization

Optimizing the tool path, cutting technologies and cutting sequence for a profiling machine is paramount to the efficient programming of the machine and thus the reduction of the cost to manufacture a part. As profiling machines, (particularly laser profiling machines) become faster and more sophisticated, the integrity of the part in the nest sheet and the safety of the machine head become even more important.

Radprofile intelligently applies the profile tool paths automatically at the nesting stage to maintain the quality and integrity of your parts, while also optimizing the cutting sequence and ensuring cutting head safety, thus enabling the machine tool to perform to its optimum potential.

Radprofile supports automatic common line cutting. This enables the downstream nesting process to fully optimize material utilization while also benefiting from reduced cutting times and gas costs. Parts identified for common cutting can be controlled to cut in clusters to maintain sheet rigidity and remove tolerance problems associated with common cutting in large quantities.

Features include

Drag and drop data input

Batch processing of DXF/DWG

Smart Order lead-ins - maximize safety/reduce runtimes

Automatic Hazard avoidance maintaining head safety

Intelligent tagging of components and scrap

Bridge cutting – reduced costs/times

Automatic common line cutting

Automatic remnants, sheet scrapping and off-cuts

Project Nesting incorporating user definable reports

Graphical program verification

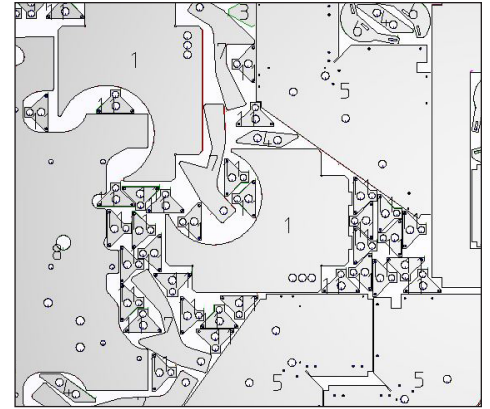
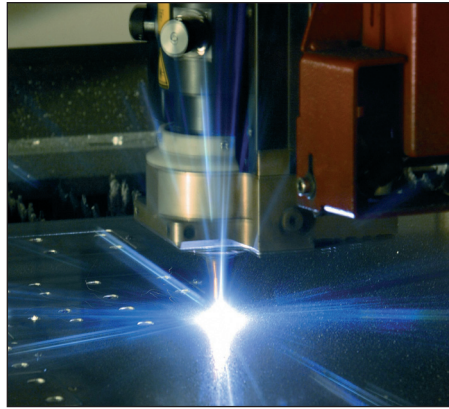
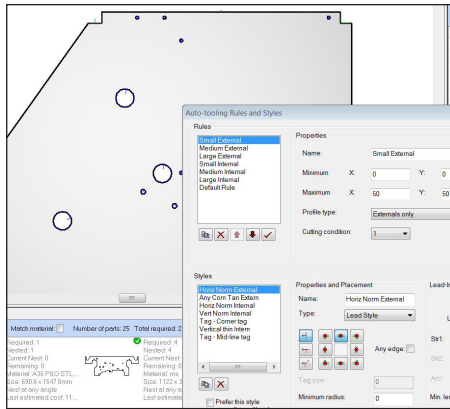
Quick estimates for parts or nests

Simple intuitive interface with clear simple icons

Reduced lead times and increased production flexibility



Radprofile intelligently applies the profile tool paths at the nesting stage to maintain the quality and integrity of your parts while also optimizing the cutting sequence and ensuring cutting head safety, to enable the machine tool to perform to its optimum potential.



Power and Control

The power of automation with the ability to control by your preferences. The Radprofile programming solution provides your operators with easy to use software that can be educated to adopt your preferred practices and processes. Lead-in and lead-out preferences, tagging, preferred profiling sequences - all these and more can be defined relative to material type, thickness and machine tool in the Manufacturing Database (MDB). The MDB expands with your business. The introduction of new customers, new products or new machines brings into your manufacturing environment the need to control new material, strategies and new practices. The MDB ensures consistency of programming for these new criteria for all of your machines which translates to less rejects, less rework and higher returns.

If manual control is your preference, this is in abundance with Radprofile. An operator can take full control of the programming process at any stage. The ability to interact manually and override any of the automated processes gives a Radprofile user the power to tackle the most difficult jobs with ease and confidence.

The fully integrated Project Nester provides your operator with an instantaneous overview of your profiling demand. Automatic rectangular nesting, single part true shape nesting and manual drag and drop nesting techniques enable your operator to quickly, easily and efficiently meet your ever-changing production and customer demands. If material utilization is critical to your business, upgrading the nester to Radnest (our true shape nester) will raise your material utilization while providing further advanced nesting tools for your operator.

Efficiency is Everything

Radprofile is a fast, modern programming application designed and written by Radan to assist a programmer in transferring data from CAD to NC code. The seamless interface and the automatic processes all assist the operator. Unfortunately in reality, production workflow is not always that consistent. Problems downstream, manufacturing change requests, and rework requests all require an operator to be fast and efficient.

Radprofile enables an operator to jump into the programming process at the point where the change is required; but it does not necessarily demand that the whole programming process is repeated.

A machine tool is only as efficient as the software driving it, so that is why we personally install every Radprofile post processor to ensure that it is commissioned to match your machine tool and controller. It is your production efficiency that it is going to be controlling, that's why your software is important to us.