



Tooling & Machinery, Inc.

Complete Metalworking Solutions

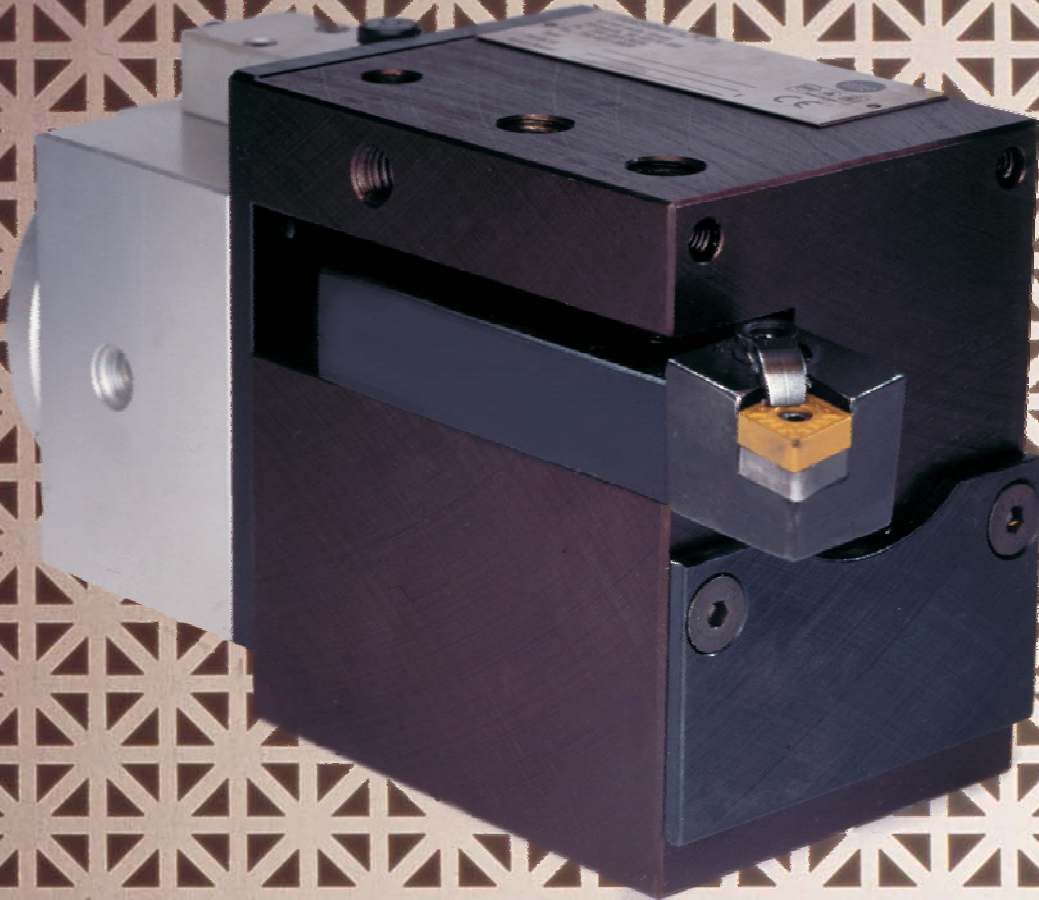
Roseville Saginaw & Jackson, MI

ISO Certified

(800) 991-4225

[www.ahbinc.com](http://www.ahbinc.com)

[customerservice@ahbinc.com](mailto:customerservice@ahbinc.com)



Doug Browne Samsomatic employee since 2000.  
As a Precision Manufacturing Specialist for Samsomatic,  
Doug knows that attention to the smallest of details is crucial  
to your success.

**Samsomatic**  
*People and Products*  
*Dedicated to Your Success*



# Fixed Tool Positioner Tool Positioners

S A M S O M A T I C

Today's competitive manufacturing environment doesn't give you time to iterate your process toward your quality goals: You've got to get each part right, the first time.

Samsomatic's family of Fixed Tool Positioners draws on our 35 years of innovation in tool positioner design, with lots of options to keep you in control of part and feature size.

These versatile positioners put repeatable quality in the forefront, with a selection of sizes and stiffnesses. They allow you to handle any machining job that involves facing, cutting outer diameters, or cutting grooves of any configuration. And, when you're done cutting, simply retract the tool to avoid marking your precision-machined workpiece. Flexible tool retention options include compatibility with most available quick-change systems.

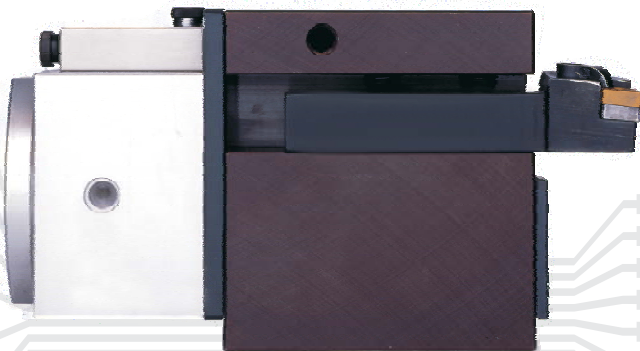
You put a lot of care into the design of your precision machined components. With our family of Fixed Tool Positioners, you can ensure that the care you put in is reflected in the quality of every component that your process puts out.

## Fixed Tool Positioner

- |                     |                     |                            |
|---------------------|---------------------|----------------------------|
| • Model ACTF100:    | Total Travel: 200m  | Stiffness: 55 lb/0.001 in  |
| • Model ACTF200:    | Total Travel: 200 m | Stiffness: 125 lb/0.001 in |
| • Model ACTF300:    | Total Travel: 300 m | Stiffness: 185 lb/0.001 in |
| • Model ACTF100-XY: | Total Travel: 400 m | Stiffness: 55 lb/0.001 in  |

*Other models are available, offering several size, stiffness, and total travel options. Call a Samsomatic sales representative to discuss your application*

## Specifications



SAMSO  
MATIC