



 **SlatPro**

**CUTTING PRODUCTIVITY SOLUTIONS**

**AHB**  
**TOOLING & MACHINERY**

**COMPLETE METALWORKING SOLUTIONS**

(800) 991-4225  
ISO Certified

[www.ahbinc.com](http://www.ahbinc.com)  
[customerservice@ahbinc.com](mailto:customerservice@ahbinc.com)



## **SlatPro**

Your laser cutters are the heart of your business. As long as your machinery is up and running, the orders will keep coming. At SlatPro™ we help you improve your bottom line with innovative ways to improve the way you run your operation. Our product offerings are designed to bring more safety, more efficiency and greater productivity.

SlatPro products include replacement copper slats for extended life, the revolutionary Slaghog™ slat cleaner for easier slat maintenance, and our innovative Rhino Hammer and Rhino Table are perfect for removing tabbed parts after cutting. We also offer an array of tools and products to make handling parts safer, simpler and more efficient.

**SLATPRO MANUFACTURES COPPER SLATS AND GRATES  
FOR USE ON ALL LASER CUTTING MACHINES.**



# COPPER SLATS

## COPPER SLATS

Copper slats are produced for all laser machine manufacturers. SlatPro copper slats are made to match your machine specification, making replacements easy to install, quick to order, and simple to maintain.

### REPLACE YOUR STEEL GRATING WITH COPPER GRATING.

We offer copper slats for users of all laser machine manufacturers. Thanks to our copper buying power, we are able to offer affordable copper slats to laser operators throughout North America.

AMADA • MAZAK • BYSTRONIC • MITSUBISHI • HK LASER • LVD • SALVAGNINI • TRUMPF

**CUSTOM SLATS** - Slat Pro can produce slats to any specification.

### WHY IS COPPER SUPERIOR TO STEEL?

Copper lasts six-to-eight times longer than steel. What's more, copper slats significantly reduce slag accumulation. With less slag buildup, there's less laser bounce-back for better part finishes. Resulting in a higher quality finished product. While your initial cost of copper slats is higher than steel, your investment pays off quickly.



### THE SCIENCE BEHIND WHY COPPER IS BETTER.

Slag builds up at a much slower rate on solid copper slats. Here's why: Copper has a high thermal conductivity and melt point. Thus, copper slats stay cooler than steel during cutting. When hot particles come in contact with the cooler copper, they're less likely to stick, resulting in less slag buildup.

SlatPro™ is not affiliated with any of the laser machine manufacturers on this page. Corporate names and trademarks stated are the property of the respective companies.





**NEW AND IMPROVED**

**THE SLAGHOG™ for Laser  
MOTORIZED SLAT CLEANER**

Time to put an end to the labor-intensive task of cleaning slats. The **SLAGHOG™** is designed to remove tough slag and dross buildup from your laser cutter support surface. This patented, motorized slat cleaning tool works on both copper and steel support slats. Designed to be used by a single operator, the **SLAGHOG™** brings a new level of efficiency to your operation. It can even be operated on the unused portion of the bed while the machine is running, further increasing productivity.

**SLAGHOG™ for Laser Standard: #67123**

- Choose Cutters for Slat Thickness:
  - 14ga: #66106
  - 11&12ga: #66031
  - 10ga: #66105
  - 7ga-3/16" Cutter: #66095
  - 1/4" Cutter: #66096
  - Long Cutter for 11ga: #67067

**SLAGHOG™ for Laser Narrow: #67182**

- Made for 11 gage slats

**THE SLAGHOG™ FEATURES**

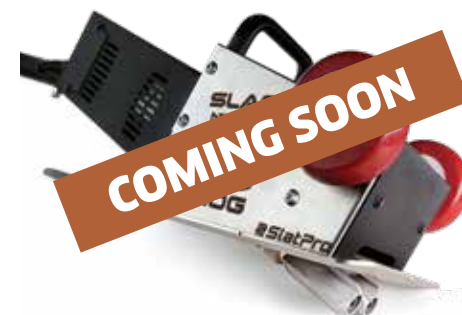
- **NEW** 10 AMP motor
- **NEW** Longer life drive shafts
- **NEW** Heavy duty industrial gearing
- Clean a standard size bed in about 15 minutes
- For use on most manufactures' laser machines
- Dual cutters lift slag from both sides of the slats
- Cutters are interchangeable to accommodate different slat thicknesses
- Integrated wheels allow for quick use when placing on machine



**BEFORE**



**AFTER**



**SLAGHOG™ for Plasma**

- 1/8" - 3/8" thick slats
- Min width between slats of 2.75"
- Min depth from top of slat down to top of support bar 3"
- 20 amps at 120 volts



# RHINO HAMMER



## TOOLS OF THE TRADE YOU WOULDN'T TRADE FOR ANYTHING.

The **RHINO HAMMER** makes removing tabbed parts much easier after they are cut. This innovative tool uses shop air to create impact vibration that breaks the tab loose, leaving the finished parts in perfect condition. The key is the unique polyurethane tip, available in two sizes: Standard, featuring a 1.43" diameter tip and small, featuring a .75" tip.

**RHINO HAMMER: #66130**

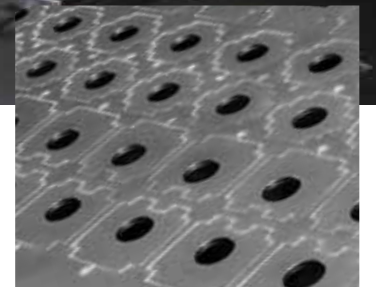
## RHINO HAMMER FEATURES

- Reduces time and effort necessary to remove parts from the nest
- Works on different types and thicknesses of material
- Replaceable polyurethane tip does not mar parts
- Compact and easy to grip
- Air pressure can be regulated to reduce vibration force



## RHINO HAMMER TIPS:

- 1.43 Dia Standard Tip: #66128
- .75 Dia Small Tip: #67048



**BEFORE**



**AFTER**



# PRODUCTS & ACCESSORIES



## SLAG REMOVAL TOOL: #66101

One end of this tool features a slot for prying slag from slats. The other end can adjust the material position in the laser machine and separate stacked sheet and plate.

- Long lasting fingers
- 5X stronger than conventional steel
- Available for slat thickness of 10, 11, 12, 13 and 14ga.
- Straightens tips and removes slag without damaging the slat
- 36" Overall Length



## HAND MAGNETIC LIFTER: #66108

Magnetic lifter easily lifts steel parts from the machine after cutting. Weighs Less Than 4 lbs., safely holds The OSHA Approved 70 lbs. with up to 10:1 Safety Factor. The Hand Lifter is the safest and only way to carry, drag, unstack and position all your steel pieces.

- Over 660 lbs. of holding force on ¼" steel for safe material handling
- Up to 220 lbs. of shear force
- Holds up to 450 lbs. on 1/8" and up to 165 lbs. on 1/16" steel



## SWIVEL MAGNETIC LIFTER: #66134

Magnetic lifter easily lifts steel parts from the machine after cutting. Weighs less than 4lbs. and lifts up to 660lbs.

- Over 660 lbs. of holding force on ¼" steel for safe material handling
- Up to 220 lbs. of shear force
- Holds up to 450 lbs. on 1/8" and up to 165lbs even on 1/16" steel



## SWIVEL MAGNETIC LIFTER 550: #67181

Magnetic lifter easily lifts steel parts from the machine after cutting. Weighs less than 8lbs. and lifts up to 660lbs.

- Over 660 lbs. of holding force on ¼" steel for safe material handling
- Up to 220 lbs. of shear force
- Holds up to 450 lbs. on 1/8" and up to 165lbs even on 1/16" steel



## MAGNETIC PARTS PICKER: #67174

Light weight and picks up small light weight parts easily.

- 16" reach
- 14 lb max lifting capacity
- Pull Knob to release parts from magnet



## PRODUCTS & ACCESSORIES



### SUCTION HAND LIFTERS #66109

Lift and remove finished parts from nest.

- Easy to lift all flat surface parts
- Available cup materials for moderate and high temperatures
- Cup sizes of 3 or 4-inch diameter



### SUCTION LIFTER EXTENDED REACH #67079

Extend your reach to lift and remove finished parts from nest.

- Easy to lift all flat surface parts
- Available cup materials for moderate and high temperatures
- 12" - 36" Reach



### REPLACEMENT CLEANING TOOL #66129

After-market cutting tools are a direct replacement for the OEM version. Made from heat treated tool steel for maintaining a better cutting edge and longer life.

SlatPro™ is in no way affiliated with the Original Equipment Manufacturer (OEM).

- Set of 2
- Replaces: For slat thickness .118 - .154 (3 - 3.9 mm)
- P/N 1644867



### SLAT SHIELD PLUS 5 Gallon #66107

Slat Shield Plus comes in a 5-gallon or 55 gallon container. It is a slag/dross preventative that can be applied to new or cleaned slats. Slat Shield Plus is applied to copper as well as steel laser cutting beds.

- Increased machine uptime
- Reduction in slag/dross buildup on slat
- Reduce spatter on backside of cut parts
- Clean slats with less effort
- Lower maintenance costs
- Non-flammable
- Non-Aerosol



### SLAT SHIELD PLUS 55 Gallon #66131



**SlatPro**  
CUTTING PRODUCTIVITY SOLUTIONS



SlatPro™ LLC  
4757 Mustang Circle  
Mounds View, MN 55112

