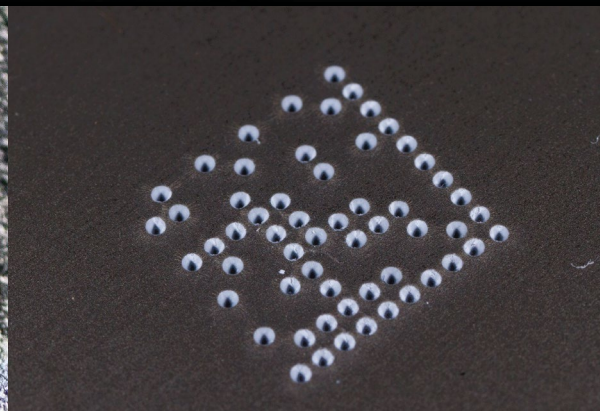




**IMPACT** MARKING STATIONS  
DOT PEEN SOLUTION



BENCHTOP RANGE

**AHB**

TOOLING & MACHINERY, INC.

COMPLETE METALWORKING SOLUTIONS



# IMPACT DOT PEEN MARKING STATION



## TOUCH & MARK

Plug-n-play design allows marking the moment your machine is out of the box! The IMPACT is a **totally standalone machine** with onboard traceability software. Its intuitive touch interface makes it easy to configure and master. So it facilitates the development of a unique identification system for your workpieces and reduces the risk of error. The IMPACT capitalizes on long experience in the field of industrial traceability.



## I-SENSE

With the motorised Z axis, it has never been so easy to adjust the Z axis. The I-Sense function detects the surface of the workpiece, **automatically adjusts the height** of the Z axis and starts marking with no intervention on the part of the operator.

Several adjustment modes are available: automatic mode (I-Sense), programmable mode and normal mode, which allows manual adjustment by means of buttons located on the side of the machine.



## DYNAMIC DOT CONTROL (DDC)

A perfect result every time!

The IMPACT features DDC™ (Dynamic Dot Control) technology.

This enables **automatic adjustment of point density** according to the required size and depth of marking. Your markings are visible and of high quality, irrespective of your application. Two adjustment modes available: automatic and manual.

# TECHNICAL CHARACTERISTICS

	IMPACT P	IMPACT ez P	IMPACT m	IMPACT ez m
Technology	Pneumatic	Pneumatic	Electromagnetic	Electromagnetic
Z axis	Manual	Motorized	Manual	Motorized
I-Sense technology	-	-	-	YES
Dynamic Dot Control (DDC)	-	-	YES	YES
Small characters: 0.02 inch (0.5 mm)	-	-	YES	YES
Marking field	3.9 x 4.7 inches (100 x 120 mm)			
Z travel	11.8 inches (300 mm)			
Character height	0.11 - 3.9 inches (3 - 100 mm)			
Marking applications	Texts, logos, 2D codes (DataMatrix, QR codes etc.)			
Communication	Ethernet TCP/IP, RS232, USB, FTP, dedicated Inputs/Outputs			
Power supply	Universal: 100-240 V AC			
Material hardness	≤ 62 HRC (marks most metals)			
Weight & dimensions (l x w x h)	57.3 lbs (26 kg)   16.9 x 10.6 x 27.7 inches (430.9 x 270 x 704 mm)			
Software	T08 - onboard software			

## Software capabilities

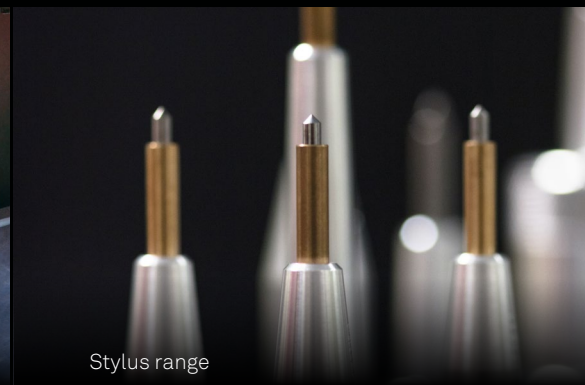
- » Serialization
- » Automatic time stamping
- » Counters
- » Duplication control
- » Marking result preview
- » Link to a database (CSV, Excel, Access)
- » Marking history



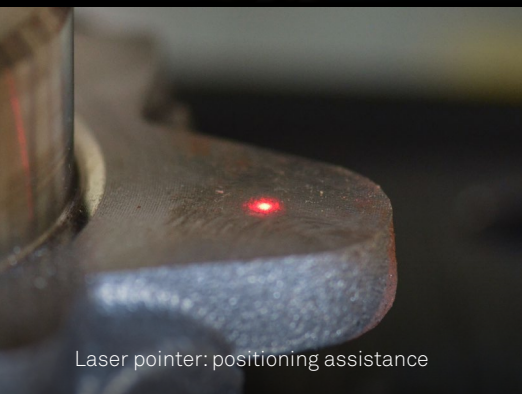
Rotary device: accessory for cylindrical workpieces



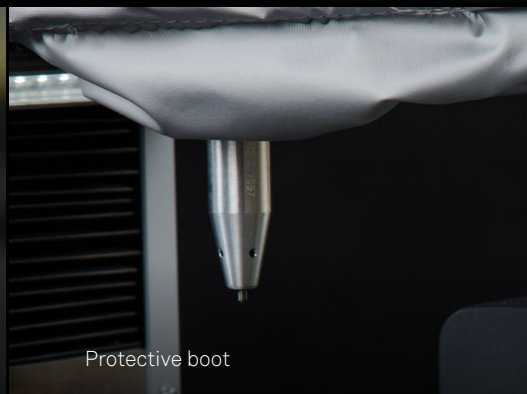
Hand-held scanner for instantaneous reading of markings



Stylus range



Laser pointer: positioning assistance



Protective boot



Positioning with magnetic clamping



# A MARK FOR A LIFETIME

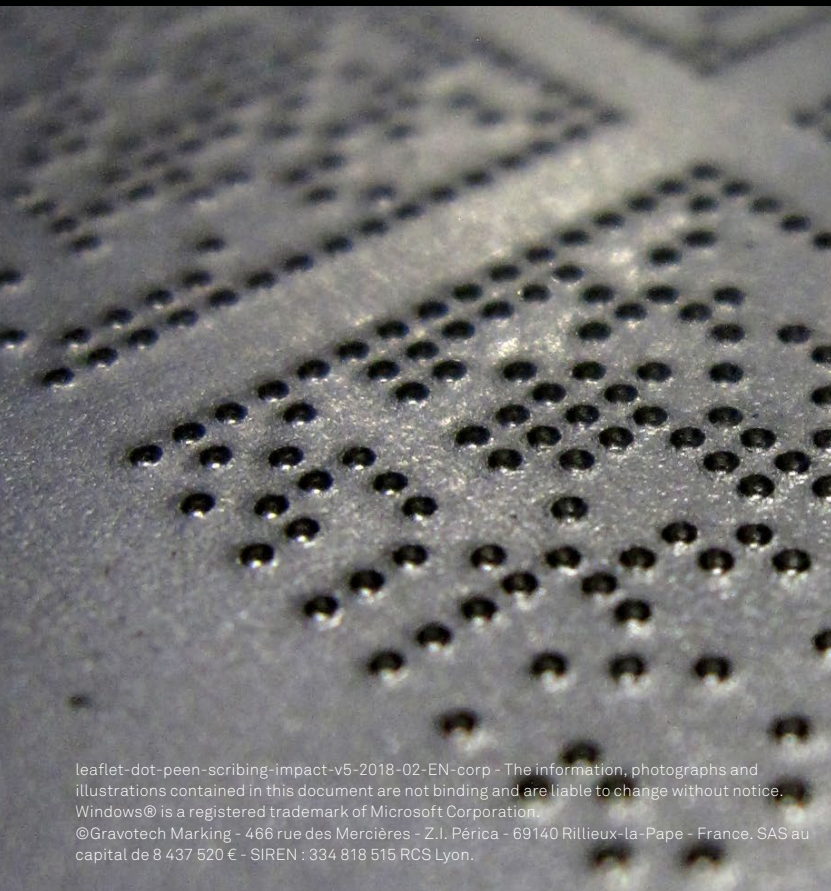
THE IMPACT MARKING STATION MEETS ALL YOUR IDENTIFICATION NEEDS, PRESENT AND FUTURE:

- » Direct and permanent marking : references, logos, serial numbers, dates, graphics and symbols, counters, graduations, DataMatrix codes etc.
- » Marking of plates in series : automatic plate feeders (as an option).
- » Unique identifier and traceability of every component and batch of workpieces.
- » Markings compliant with ISO, automotive, aeronautical, military and defence standards etc.

“ The user is at the center of our solutions: **maximum simplicity and efficiency** have been our goals in the design of **IMPACT**. Identification and traceability have never been so simple.

”

*Gérard Guyard - President*



Technifor   
GRAVOTECH GROUP

**AHB**

**TOOLING & MACHINERY, INC.**

**COMPLETE METALWORKING SOLUTIONS**