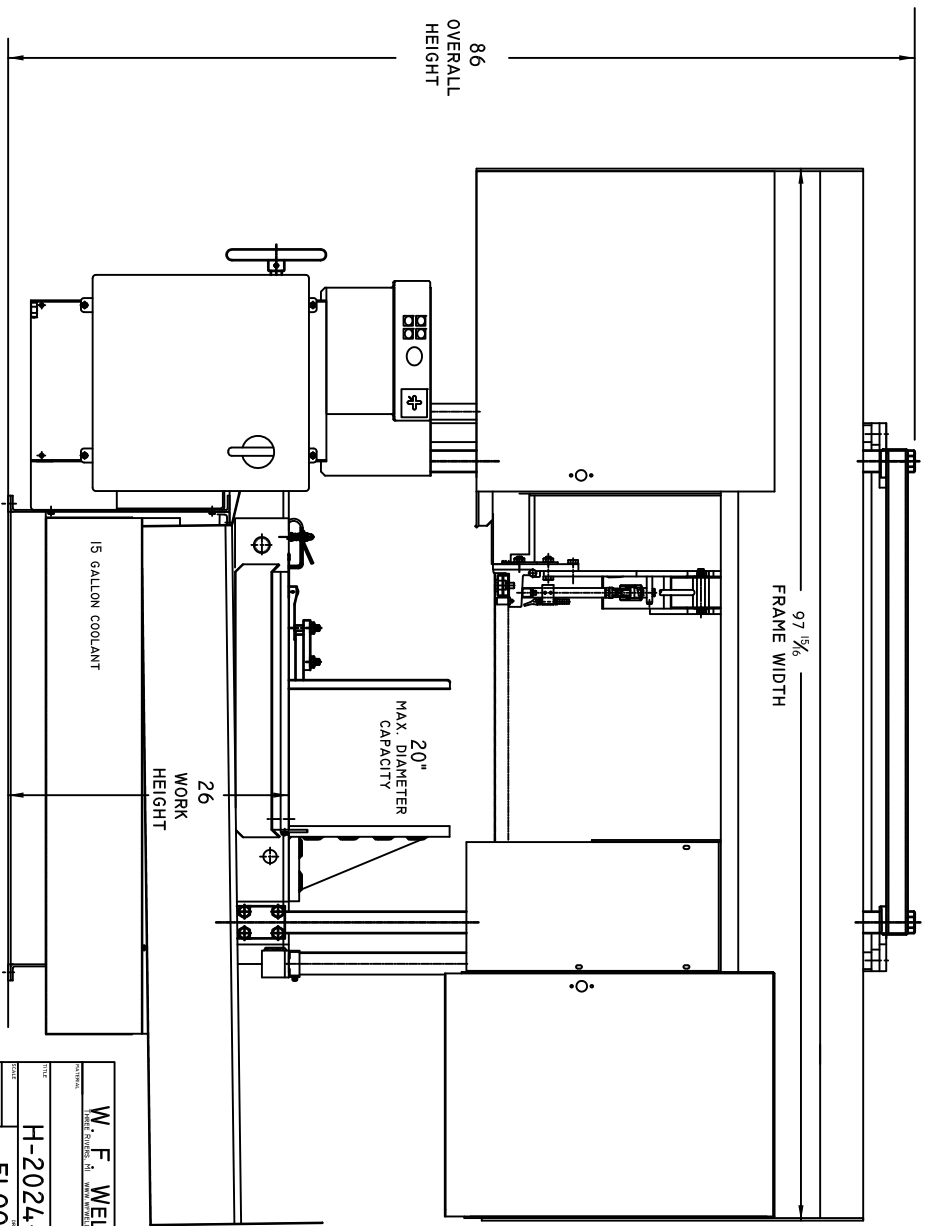
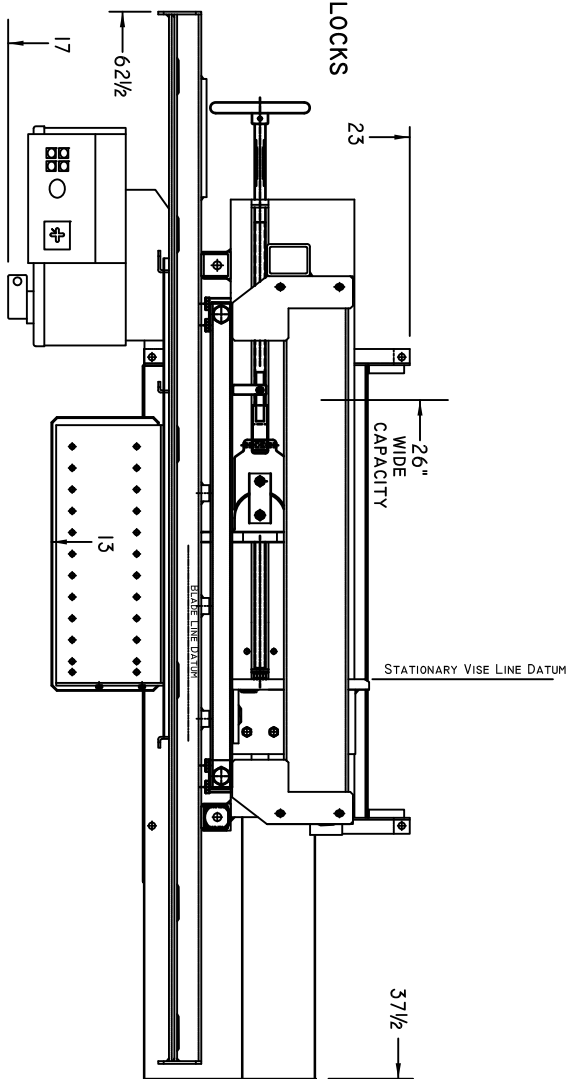


SAW SPECIFICATIONS H-2024-1

BLADE SIZE	1" X .042" X 17' -8"
CAPACITY @ 90°	20" HIGH X 24" WIDE
CAPACITY @ 90°	20" DIAMETER
WEIGHT CAPACITY	5,000 LB.
BLADE SPEED	60 - 500 SFPM
BLADE GUIDE	ROLLER WITH CARBIDE SIDE BLOCKS
BLADE TENSION	MANUAL WITH INDICATOR
BANDWHEEL SIZE	20" DIA.
BLADE DRIVE	7 1/2 HP, AC VECTOR DRIVE
WISE	MANUAL
SAWING FORCE	30 - 120 LB.
COOLANT CAPACITY	15 GALLONS
HYDRAULIC CAPACITY	3/4 GALLONS
HYDRAULIC DRIVE	1/3 HP MOTOR
WORK HEIGHT	26"
SHIPPING WEIGHT	2,800 LB.
ELECTRICS	WIRED TO NFPA 79 STANDARDS



W. F. WELLS
 ENGINEER

DATE: _____
 TITLE: H-2024-1
 PROJECT: FLOOR PLAN