

HFA-700CII

P A R T S L I S T



**COMPLETE
METALWORKING
SOLUTIONS**

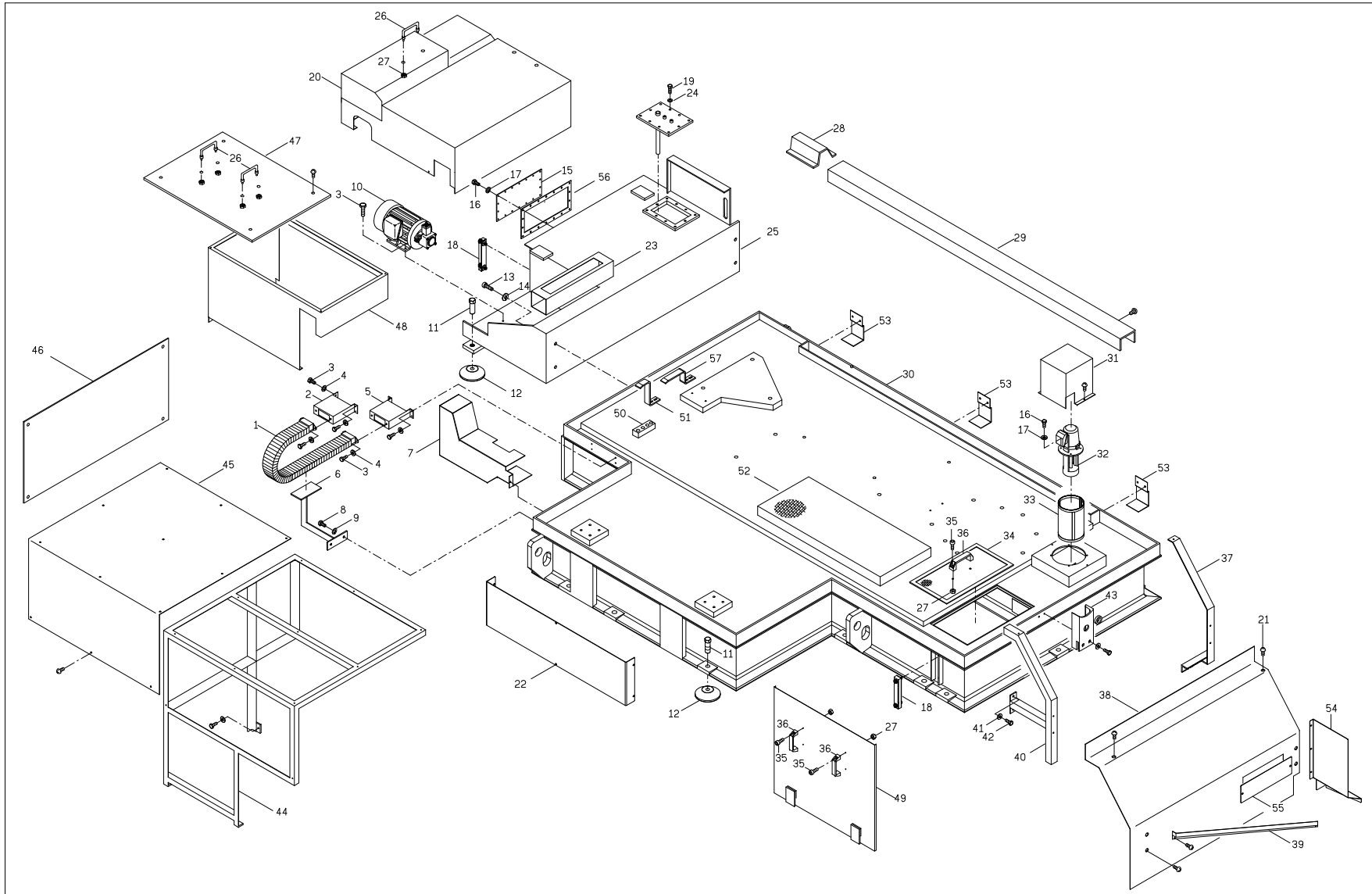
(800) 991-4225

www.ahbinc.com

ISO Certified

customerservice@ahbinc.com





REVISED DATE : 02.23.2009

DRAWING NAME :

MACHINE BODY ASS'Y

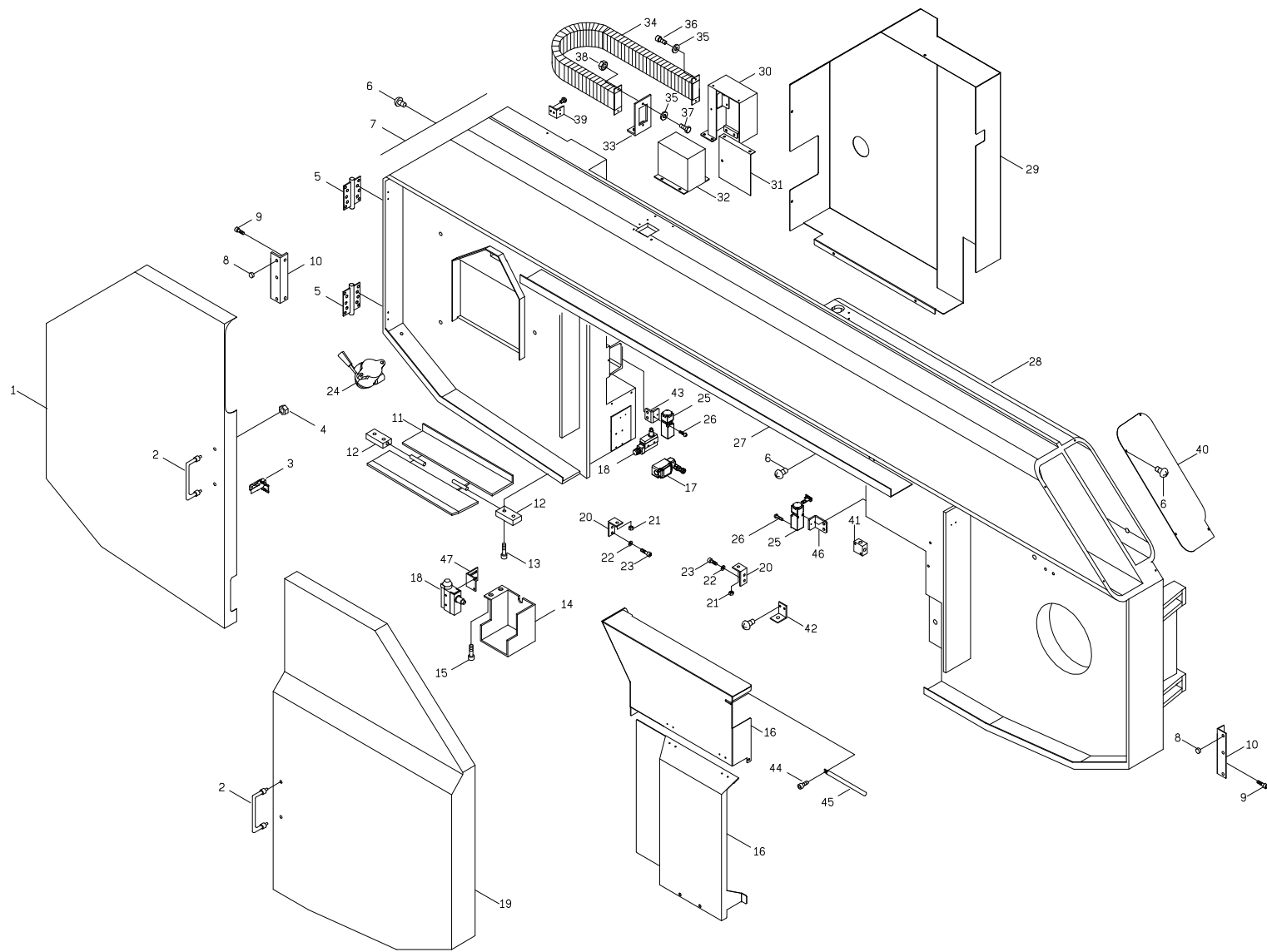
DRAWING NO : 08600100

AMADA COMPANY,LTD.

VERSION:05152009

Index	Parts Name	Drawing No.	Type	Maker	Q'ty	Note
1	FLEXIBLE PIPE		5TA-C5-1050		1	
2	FLEXIBLE PIPE BASE	08015800			1	
3	HEX.HD.SCREW		M8x20L		24	
4	WASHER		M8		24	
5	FLEXIBLE PIPE BASE	08015900			1	
6	BRACKET	08016100			1	
7	COVER	08610700			1	
8	HEX.HD.SCREW		M10x20L		2	
9	WASHER		M10		2	
10	HYDRAULIC PUMP & MOTOR		3PMBA4 (5HP)		1	
11	LEVEL SCREW	07061301			12	
12	FOOT PAD	07061400			12	
13	SOC.HD.SCREW		M16x35L		6	
14	WASHER		M16		6	
15	PLATE	06011600			1	
16	HEX.HD.SCREW		M6x20L		22	
17	SPRING WASHER		M6		22	
18	SIGHT GAUGE		3LO-140L		2	
19	HEX.HD.SCREW		M10x35L		10	
20	COVER	08610800			1	
21	DOME.HD.SCREW		M6x20L		9	
22	PLATE	08014402			1	
23	FLEXIBLE BASE	0801B100			1	
24	SPRING WASHER		M10		10	
25	OIL TANK	08412300			1	

Index	Parts Name	Drawing No.	Type	Maker	Q'ty	Note
26	BRACKET		5HD-03		3	
27	NUT		M8		12	
28	COVER	0801E100			1	
29	COVER	08019001			1	
30	BASE	08610100			1	
31	PUMP COVER	10611800			1	
32	COOLANT PUMP		3PWA29 (290L , 1/2HP)		1	
33	FILTER	08612100			1	
34	FILTER	09011200			1	
35	SOC.HD.SCREW		M8x25L		6	
36	HANDLE		7HD-01		3	
37	SUPPORT	08613700			1	
38	WISE COVER	08611001			1	
39	CHANNEL	08613000			1	
40	SUPPORT	08613800			1	
41	SPRING WASHER		M8		1	
42	SOC.HD.SCREW		M8x30L		1	
43	SUPPORT	0801E400			1	
44	SUPPORT	08613100			1	
45	WISE COVER	08613200			1	
46	PLATE	08613300			1	
47	PLATE	0801D700			1	
48	COVER	0801A900			1	
49	SPLASH GUARD	08015300			1	
50	CONNECT SEAT	08063400			1	



REVISED DATE : 02.23.2009

DRAWING NAME :

SAW FRAME ASS'Y

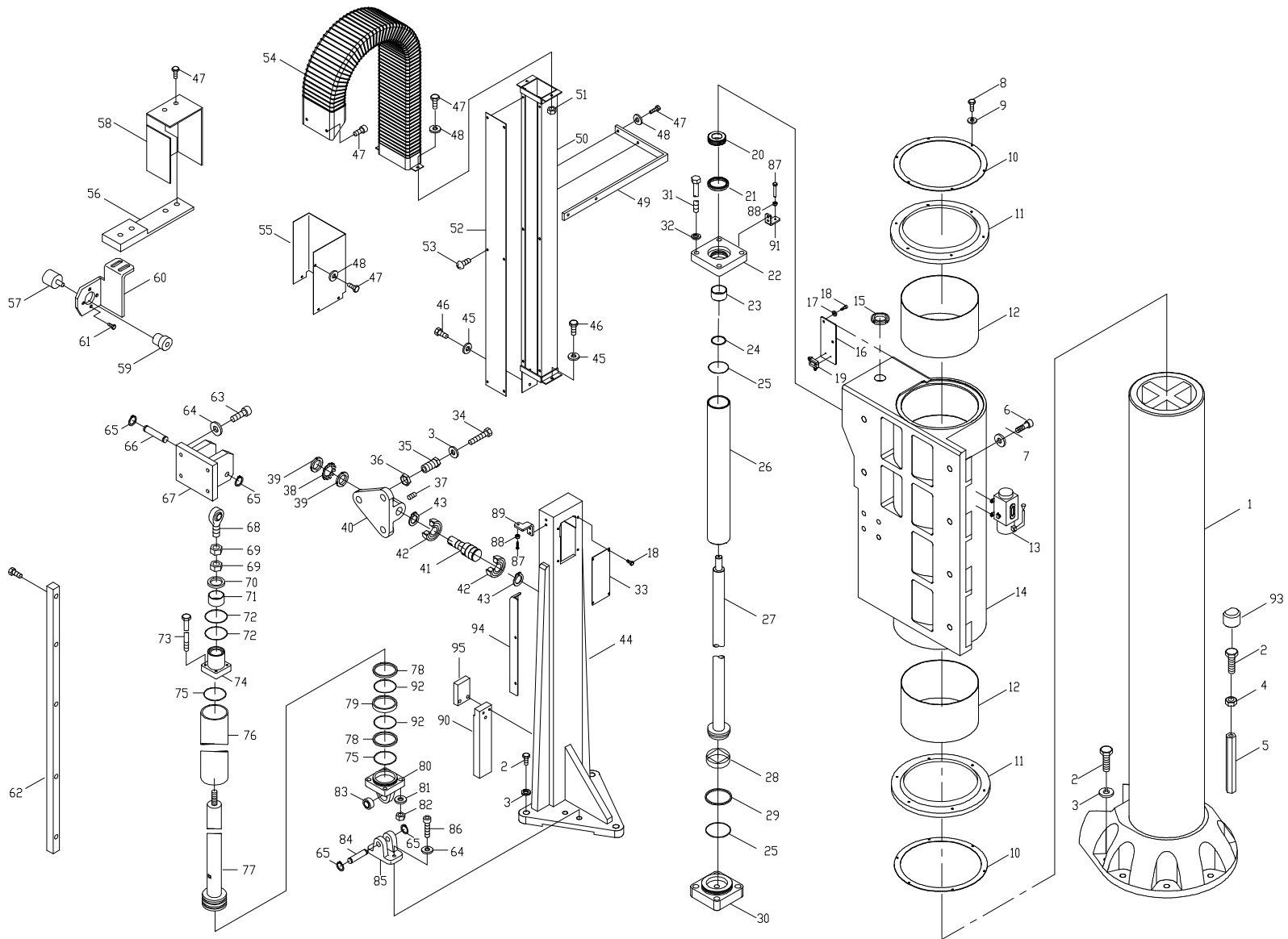
DRAWING NO : 08600200

AMADA COMPANY,LTD.

VERSION:05152009

Index	Parts Name	Drawing No.	Type	Maker	Q'ty	Note
1	COVER	08610400			1	
2	HANDLE		5HD-03		2	
3	HANDLE		5DL-03		2	
4	NUT		M10		4	
5	HINGE		5HG-AS2510		4	
6	DOME.HD.SCREW		M6x16L		33	
7	PLATE	08013101			1	
8	RUBBER				6	
9	SOC. HD. SCREW		M6x20L		4	
10	STOPPER	0801B500			2	
11	COVER	0801C301			1	
12	COVER BRACKET	0801C400			2	
13	SOC. HD. SCREW		M6x30L		2	
14	COVER	08413101			1	
15	SOC. HD. SCREW		M6x30L		2	
16	COVER	08610500			1	
17	LIMIT SWITCH		WL-CA2-Q		1	
18	LIMIT SWITCH		8SL-ZCD55		2	
19	COVER	08610300			1	
20	BARACKER	12212400			2	
21	NUT		M6		2	
22	SPRING WASHER		M6		4	
23	SOC. HD. SCREW		M6x16L		2	
24	TENSION HAND VALVE		3VH3D2-03		1	
25	SAFE LIMIT		8SI-E100-01-S51		2	

Index	Parts Name	Drawing No.	Type	Maker	Q'ty	Note
26	DOME. HD. SCREW		M3x30L		3	
27	BLADE COVER	08411200			12	
28	SAW FRAME	08610201			1	
29	COVER FOR BLADE TENSIN	08614800			1	
30	PLATE	08612900			1	
31	PLATE	0801B800			1	
32	COVER	08018900			1	
33	FLEXIBLE PLATE	08018801			1	
34	FLEXIBLE PIPE		5TIB15-038-823		1	
35	SOC. HD. SCREW		M8x25L		6	
36	SPRING WASHER		M8		3	
37	HEX. HD. SCREW		M8x30L		1	
38	NUT		M8		1	
39	PLATE	01013500			1	
40	PLATE	08615500			1	
41	CONNECT SEAT	03062801			1	
42	SEAT	08613900			1	
43	SAFE LIMIT SEAT	09613500			1	
44	SOC. HD. SCREW		M6x16L		1	
45	ROD	08021500			1	
46	SAFE LIMIT SEAT	08615400			1	
47	SEAT	08415000			1	
48					1	
49					1	
50					1	



REVISED DATE : 02.23.2009

DRAWING NAME :

LIFTING CYLINDER ASS'Y

DRAWING NO : 08600300

AMADA COMPANY, LTD.

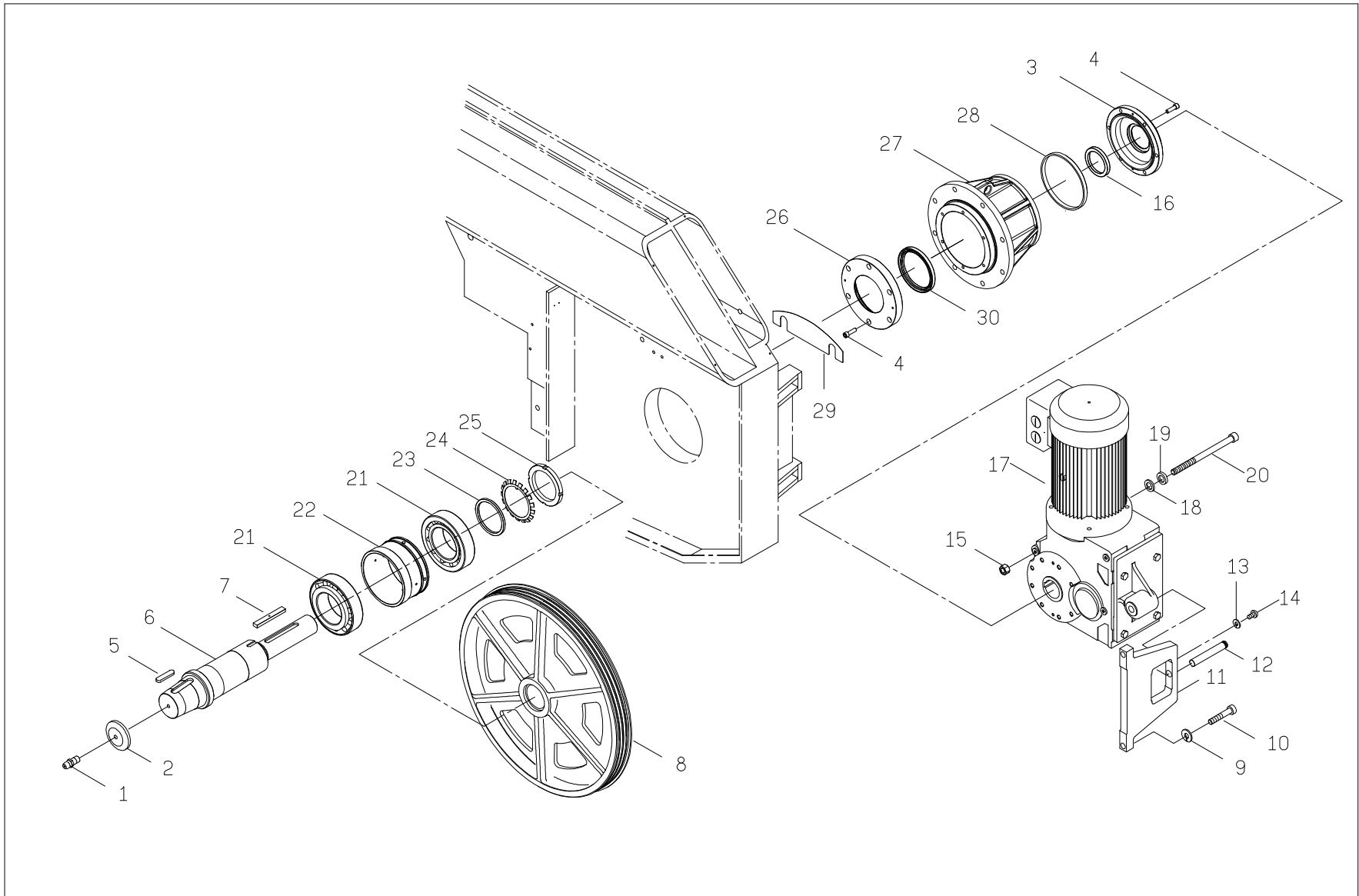
VERSION:05152009

Index	Parts Name	Drawing No.	Type	Maker	Q'ty	Note
1	MAIN COLUMN	08020500			1	
2	HEX.HD.SCREW		M16x80L		9	
3	SPRING WASHER		M16		9	
4	NUT		M16		9	
5	BAR	08021100			1	
6	HEX.HD.SCREW		M20		16	
7	WASHER		M20		16	
8	HEX.HD.SCREW		M5x20L		12	
9	WASHER		M5		12	
10	PLATE	08018700			2	
11	SEAL		4SR-270		2	
12	DU BUSHING		2DU268135		2	
13	HAND OILER		3HO-01		1	
14	YOKE BODY	08620200			1	
15	LOCKING NUT		2AN07		1	
16	PLATE	08011700			1	
17	HEX.HD.SCREW		M6x20L		6	
18	SPRING WASHER		M6		2	
19	LIMIT SWITCH		8SL-SHLQ2255		1	
20	COLLAR	07050700			1	
21	OIL SEAL		4DKB6074811		1	
22	CYLINDER CAP	07050502			1	
23	DU BUSHING		2DU6017		1	
24	O RING		4OR-P60		1	
25	O RING		4OR-G115		2	

Index	Parts Name	Drawing No.	Type	Maker	Q'ty	Note
26	CYLINDER	08063500			1	
27	PISTON ROD	08060201			1	
28	BACKING RING		4WPB-120		1	
29	U RING		4USH106		1	
30	CYLINDER CAP	09050300			1	
31	TIE ROD	08060301			4	
32	WASHER		W5/8"		4	
33	PLATE	08012901			1	
34	HEX.HD.SCREW		M16x90L		3	
35	ADJUST SCREW	10021100			3	
36	NUT	07024500			3	
37	SET SCREW		M8x20L		1	
38	LOCKING WASHER		2AW06		1	
39	LOCKING NUT		2AN06		2	
40	TRIANGLE BRACKET	08624000			1	
41	SHAFT	08624100			1	
42	BALL BEARING		2BR6009ZZ		2	
43	RETAINING RING		5CR-A45		2	
44	NARROW POST	07024000			1	
45	WASHER		M10		2	
46	HEX.HD.SCREW		M10x30L		2	
47	HEX.HD.SCREW		M8x30L		4	
48	WASHER		M8		4	
49	BRACKET	08413800			1	
50	FLEXIBLE BASE	08016201			1	

Index	Parts Name	Drawing No.	Type	Maker	Q'ty	Note
51	NUT		M8		2	
52	COVER	08016301			1	
53	DOVE.HD.SCREW		M6x15L		6	
54	FLEXIABLE PIPE		5TA-B2-1140		1	
55	FLEXIABLE CAP	08611400			1	
56	SUPPORT	08052500			1	
57	ENCODER		8EN-1000RZW		1	
58	COVER	0801B202			1	
59	GEAR	08052800			1	
60	ENCODER SEAT	08052900			1	
61	HEX.HD.SCREW		M3x20L		4	
62	RACK	08052600			1	
63	SOC. HD. SCREW		M12x40L		4	
64	WASHER		M12		4	
65	RETAINING RING		5CR-A18		4	
66	PIN	08661000			1	
67	BRACKET	08610600			1	
68	BEARING		2PHS20A		1	
69	NUT	03063000			1	
70	OIL SEAL		4DKB253769		1	
71	DU BEARING		2DU2530		1	
72	O RING		4OR-P25		2	
73	TIE ROD	08660200			1	
74	CYLINDER CAP	08660900			1	
75	O RING		4OR-G35		2	

Index	Parts Name	Drawing No.	Type	Maker	Q'ty	Note
76	CYLINDER	08660300			1	
77	PISTON ROD	08660100			1	
78	BACKING RING		4TP34		4	
79	WEARING RING	19064400			1	
80	CYLINDER CAP	19064600			1	
81	WASHER		W1/2"		4	
82	NUT		W1/2"		4	
83	BRARING		2PB18		1	
84	PIN	01060800			1	
85	BRACKET	01060200			1	
86	SOC. HD. SCREW		M10x40L		2	
87	HEX.HD.SCREW	02213000			1	
88	NUT		M8		1	
89	SEAT	08612500			1	
90	SHAFT	08414900			1	
91	SEAT	08011600			1	
92	O RING		4OR-P34		2	
93	BLOCK	09320500			1	
94	BAR	32140900			1	
95	PLATE	08612600			1	
96						
97						
98						
99						
100						



REVISED DATE : 02.23.2009

DRAWING NAME :

MOTOR & DRIVE WHEEL ASS'Y

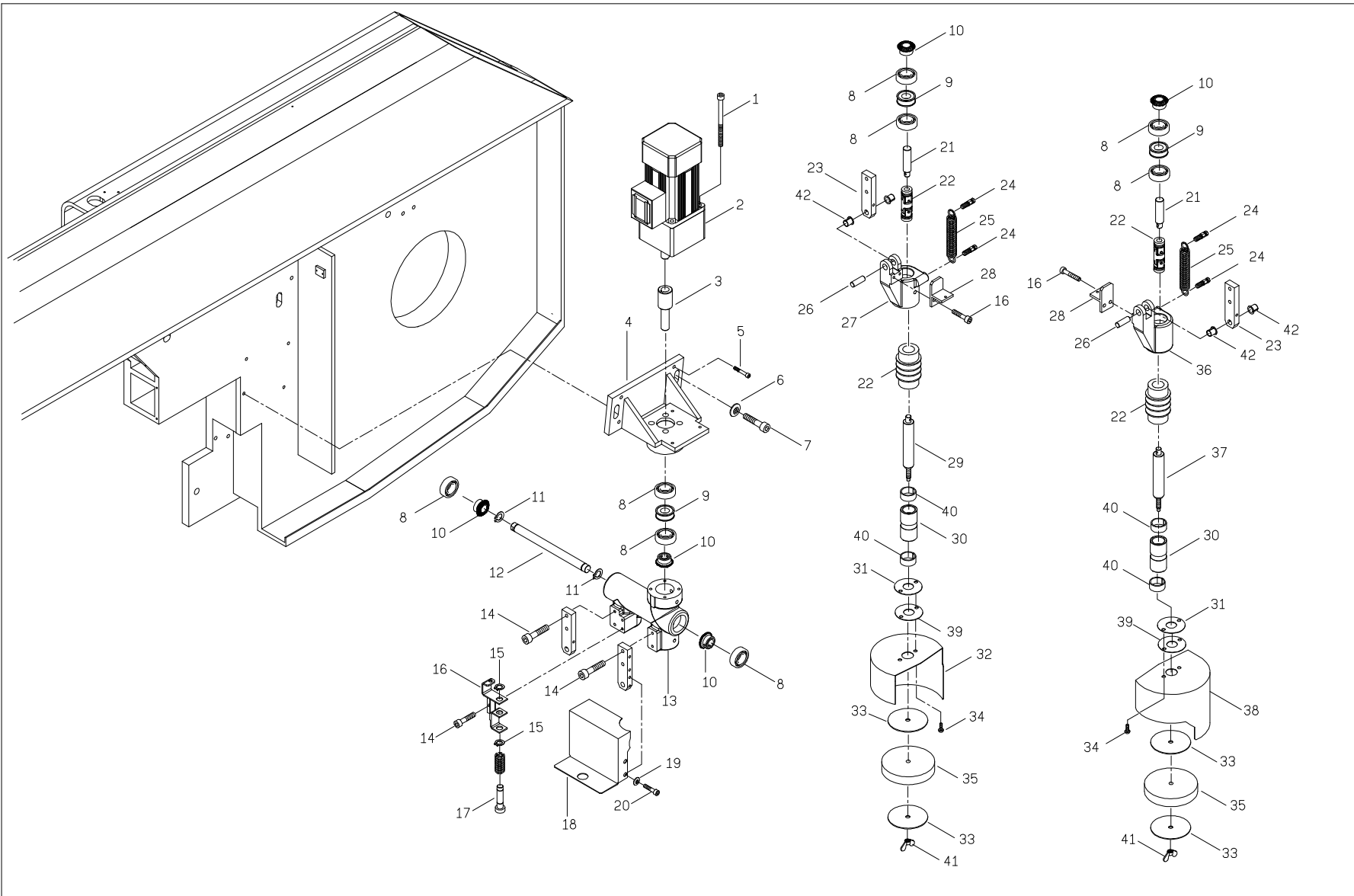
DRAWING NO : 08600400

AMADA COMPANY, LTD.

VERSION:05152009

Index	Parts Name	Drawing No.	Type	Maker	Q'ty	Note
1	NIPPLE		PT1/8"		1	
2	WASHER	07022000			1	
3	COVER	08624600			1	
4	HEX.HD.SCREW		M12x40L		12	
5	KEY		5KEA25-14-100		1	
6	SHAFT	08620101			1	
7	KEY		08625200		1	
8	DRIVE WHEEL	08620301			1	
9	SPRING WASHER		M16		2	
10	SOC. HD. SCREW		M16x70L		2	
11	BLACKET	08621200			1	
12	SHAFT	08621400			1	
13	SPRING WASHER		M6		1	
14	DOME HD. SCREW		M6x10L		1	
15	NUT		M20		1	
16	OIL SEAL		4VC85-110-7		1	
17	MOTOR		1MRJ15 (15HP)		1	
18	WASHER		5WH-WSJM502005		1	
19	WASHER		5WH-WSSB502010		1	
20	SOC. HD. SCREW		M20x290L		1	
21	BEARING		2BR32224		2	
22	COLLAR	08624900			1	
23	ROD SEAL	08625100			1	
24	LOCKNG WASHER		2AW24		1	
25	LOCKING NUT		2AN24		1	

Index	Parts Name	Drawing No.	Type	Maker	Q'ty	Note
26	COVER	08624500			1	
27	SHAFT SEAT	08624400			1	
28	ROD SEAL	08625000			1	
29	PAD	08625300			1	
30	OIL SEAL		4VC140-170-14		1	
31						
32						
33						
34						
35						
36						
37						
38						
39						
40						
41						
42						
43						
44						
45						
46						
47						
48						
49						
50						



REVISED DATE : 02.23.2009

DRAWING NAME :

CHIP BRUSH ASS'Y

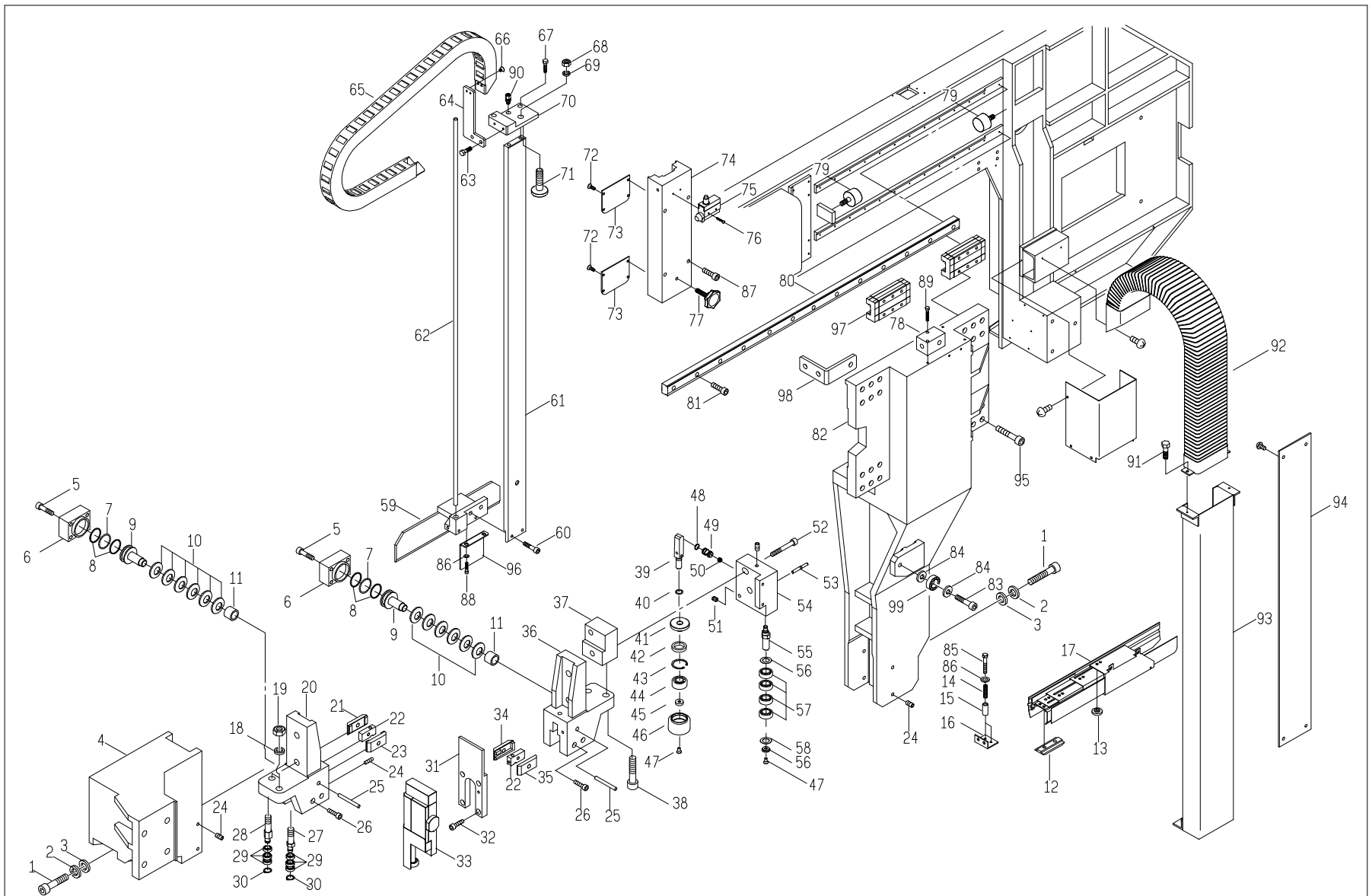
DRAWING NO : 08600600

AMADA COMPANY, LTD.

VERSION:05152009

Index	Parts Name	Drawing No.	Type	Maker	Q'ty	Note
1	SOC. HD. SCREW		M6x90L		4	
2	MOTOR		1MZTL90W		1	
3	MOTOR SHAFT	08622100			1	
4	MOTOR SEAT	08622000			1	
5	SOC. HD. SCREW		M6x20L		4	
6	SPRING WASHER		M10		2	
7	SOC. HD. SCREW		M10x20L		2	
8	BEARING		2BR6202LL-U		8	
9	WASHER	08622900			3	
10	GEAR	08623000			5	
11	RETAINING RING		5CR-A15		2	
12	SHAFT	08622200			1	
13	SEAT	08621900			1	
14	SOC. HD. SCREW		M6x25L		4	
15	RETAINING RING		5CR-C08		2	
16	PROXIMITY SWITCH	08623800			1	
17	INDUCTION SHAFT	08622700			1	
18	COVER	08611500			1	
19	WASHER		M6		4	
20	SOC. HD. SCREW		M6x10L		4	
21	CONNECTION SHAFT	08622800			2	
22	UNIVERSAL JOINT		5UJ-JCHD10H		2	
23	FIXED PLATE	08622400			2	
24	SPRING SCREW		5DL-04		4	
25	SPRING		5SPR12-18-90		2	

Index	Parts Name	Drawing No.	Type	Maker	Q'ty	Note
26	PIN	08623600			2	
27	R.CHIP BRUSH SEAT	08622300			1	
28	PLATE	08622500			2	
29	R.CHIP BRUSH SHAFT	08623200			1	
30	DU COLLAR	08622600			2	
31	WASHER	08623500			2	
32	COVER (R.)	08612400			1	
33	WASHER	08623300			4	
34	HEX. HD. SCREW		M6x6L		4	
35	CHIP		5ST-10008		2	
36	L.CHIP BRUSH SEAT	08623700			1	
37	L.CHIP BRUSH SHAFT	08623100			1	
38	COVER (L.)	08612300			1	
39	WASHER	08623400			2	
40	DU BUSHING		2DU2015		4	
41	SCREW		5BMAJ0825		2	
42	DU BUSHING		2DUF1006-18		4	
43	SPRING		5SPR14.3-16-45		1	
44						
45						
46						
47						
48						
49						
50						



REVISED DATE : 02.23.2009

DRAWING NAME :

GUIDE & GUIDE ARM ASS'Y

DRAWING NO : 08600700

AMADA COMPANY,LTD.

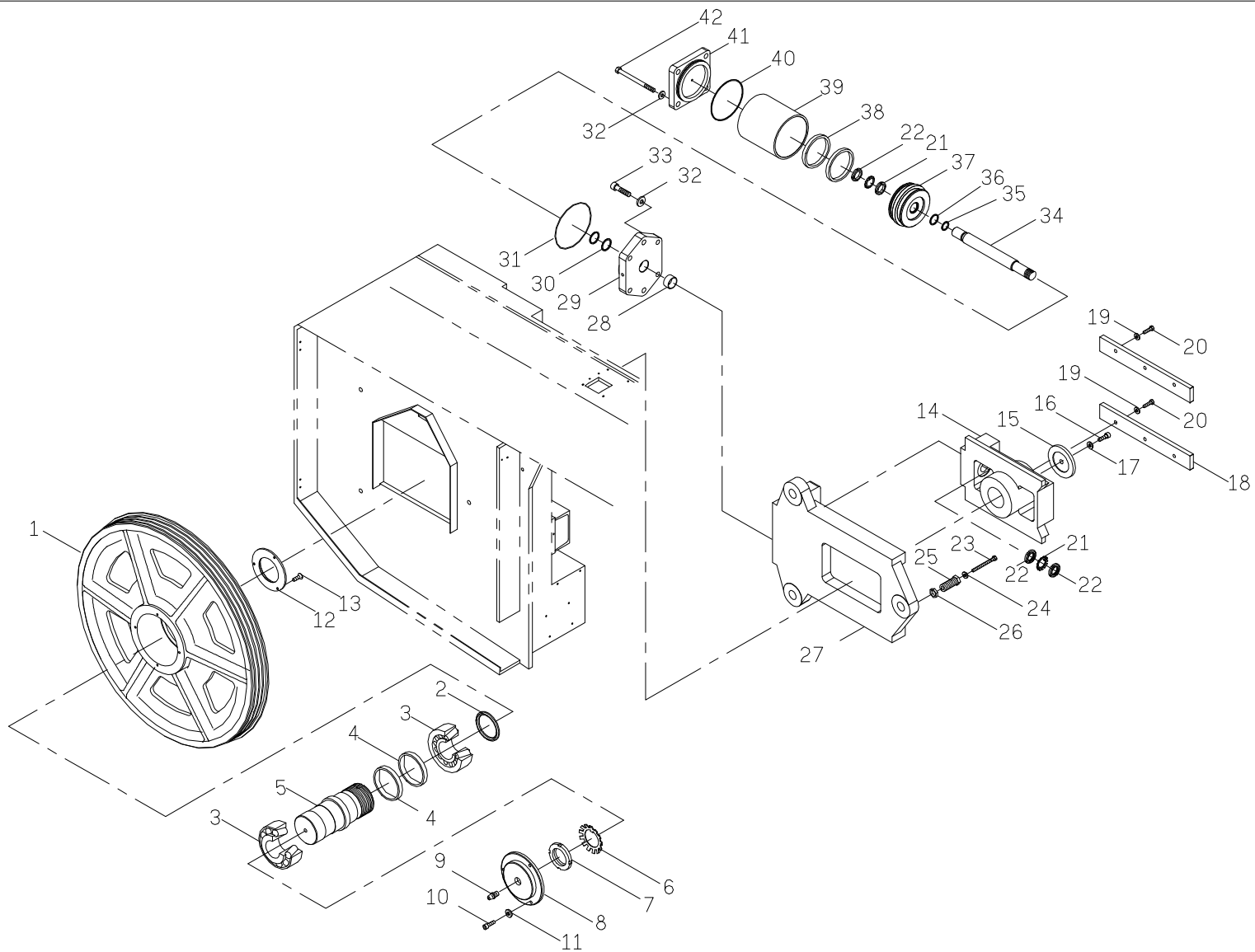
VERSION:05152009

Index	Parts Name	Drawing No.	Type	Maker	Q'ty	Note
1	SOC.HD.SCREW		M18x55L		4	
2	SPRING WASHER		M16		4	
3	WASHER	04035500			4	
4	R.H.GUIDE ARM	08640101			1	
5	SOC.HD.SCREW		M4x50L		8	
6	CYLINDER CAP	07042300			2	
7	O RING		4OR-P22A		2	
8	BACKING RING		4TP24		4	
9	PISTON ROD	09041600			2	
10	DISC SPRING		5SP281408		12	
11	DU BUSHING		2DU1415		2	
12	KEY	10614100			1	
13	KEY	07312100			6	
14	SPRING	07312600			1	
15	SLEEVE BARREL	07312700			1	
16	PLATE	07312000			1	
17	BLADE COVER	08414800			1	
18	WASHER		M16		2	
19	NUT		M16		2	
20	R.H.GUIDE HOLDER	08440100			1	
21	R.H.FRONT INSERT	09041300			1	
22	UPPER INSERT	09041000			2	
23	R.H.REAR INSERT	09041400			1	
24	SET SCREW		M6x10L		3	
25	PIN		5PN-H1080		2	

Index	Parts Name	Drawing No.	Type	Maker	Q'ty	Note
26	SOC. HD. SCREW		M5x20L		10	
27	FRONT ECCENTRIC SHAFT	09043100			1	
28	REAR ECCENRIC SHAFT	10043200			1	
29	BALL BEARING		2BR6203LL-U		6	
30	RETAINING RING		5CR-A17		2	
31	PLATE	10018300			1	
32	SOC. HD. SCREW		M10x30L		4	
33	OUT OF SQUARE CUT DETECTOR		DC/B-AMADA		1	
34	L.H.FRONT INSERT	08441400			1	
35	L.H.REAR INSERT	08441500			1	
36	L.H.GUIDE HOLDER	08440200			1	
37	CONNECTION SEAT	08441800			1	
38	SOC. HD. SCREW		M16x70L		2	
39	PRECAUTION SHAFT	10623001			1	
40	O RING		4OR-P14		1	
41	WEATERTIGHT PLATE	10622100			1	
42	OIL SEAL		4TC25-48-7		1	
43	REEARING RING		5CR-B47		1	
44	BALL BEARING		2BR2303		1	
45	BARRICADE PLATE	10622300			1	
46	PRECAUTION WHEEL	08423400			1	
47	PLAT.HD. SCREW		M8x16L		2	
48	O RING		4OR-P21		1	
49	PISTON	10622701			1	
50	SPRING		5SPR04-08-15		1	

Index	Parts Name	Drawing No.	Type	Maker	Q'ty	Note
51	ADJUST.HD. SCREW		M6x10L		1	
52	SOC.HD. SCREW		M14x110L		2	
53	FIXED TOP	07320501			1	
54	PRECAUTION PLACE	08423101			1	
55	BEARING SHAFT	08423500			1	
56	WASHER	10622500			2	
57	BALL BEARING		2BR6004ZZ		4	
58	BEARING COVER	10622600			1	
59	FEELER	08640301			1	
60	SOC.HD.SCREW		M10x35L		2	
61	RECT.BAR	08040802			1	
62	WATER PIPE	08641800			1	
63	HEX. HD. SCREW		M6x20L		2	
64	PLATE	09614400			1	
65	FLEXIABLE PIPE		5TIB17-100-1311		1	
66	FLAT HD. SCREW		M4x8L		4	
67	HEX. HD. SCREW		M10x40L		2	
68	NUT		M16		1	
69	WASHER		M16		1	
70	PLATE	08641900			1	
71	WASHER	10540400			1	
72	FLAT. HD. SCREW		M6x12L		8	
73	PLATE	11041900			2	
74	BAR HOLDER	08042501			1	
75	LIMIT SWITCH		8SL-AZ7110		1	

Index	Parts Name	Drawing No.	Type	Maker	Q'ty	Note
76	DOVE HD. SCREW		M4x30L		2	
77	SCREW		M12x30L		1	
78	CONNECTION SEAT	10054000			1	
79	SCREW		M10x30L		2	
80	LINEAR TRACK		2LGNRS30LR-1000		2	
81	SOC. HD.SCREW		M6x15L		26	
82	L.H.GUIDE ARM	08640200			1	
83	SOC. HD. SCREW		M12x35L		1	
84	WASHER		M12		2	
85	HEX. HD. SCREW		M6x30L		1	
86	WASHER		M6		4	
87	SOC. HD. SCREW		M8x40L		4	
88	SOC. HD. SCREW		M6x10L		2	
89	HEX. HD. SCREW		M6x50L		2	
90	CONNECTION		6FIS10		1	
91	HEX. HD. SCREW		M8x15L		4	
92	FLEXIBLE PIPE		5TA-B2-1140		1	
93	FLEXIBLE BASE	08016201			1	
94	COVER	08016301			1	
95	SOC. HD. SCREW		M8x35L		20	
96	PLATE	08614700			1	
97	LINEAR TRACK		2LGBNRS30LR		4	
98	SUPPORT	08612700			1	
99	BALL BEARING		2NAST12ZZ		1	
100						



REVISED DATE : 02.23.2009

DRAWING NAME : **DRIVEN WHEEL & BLADE TENSION ASS'Y**

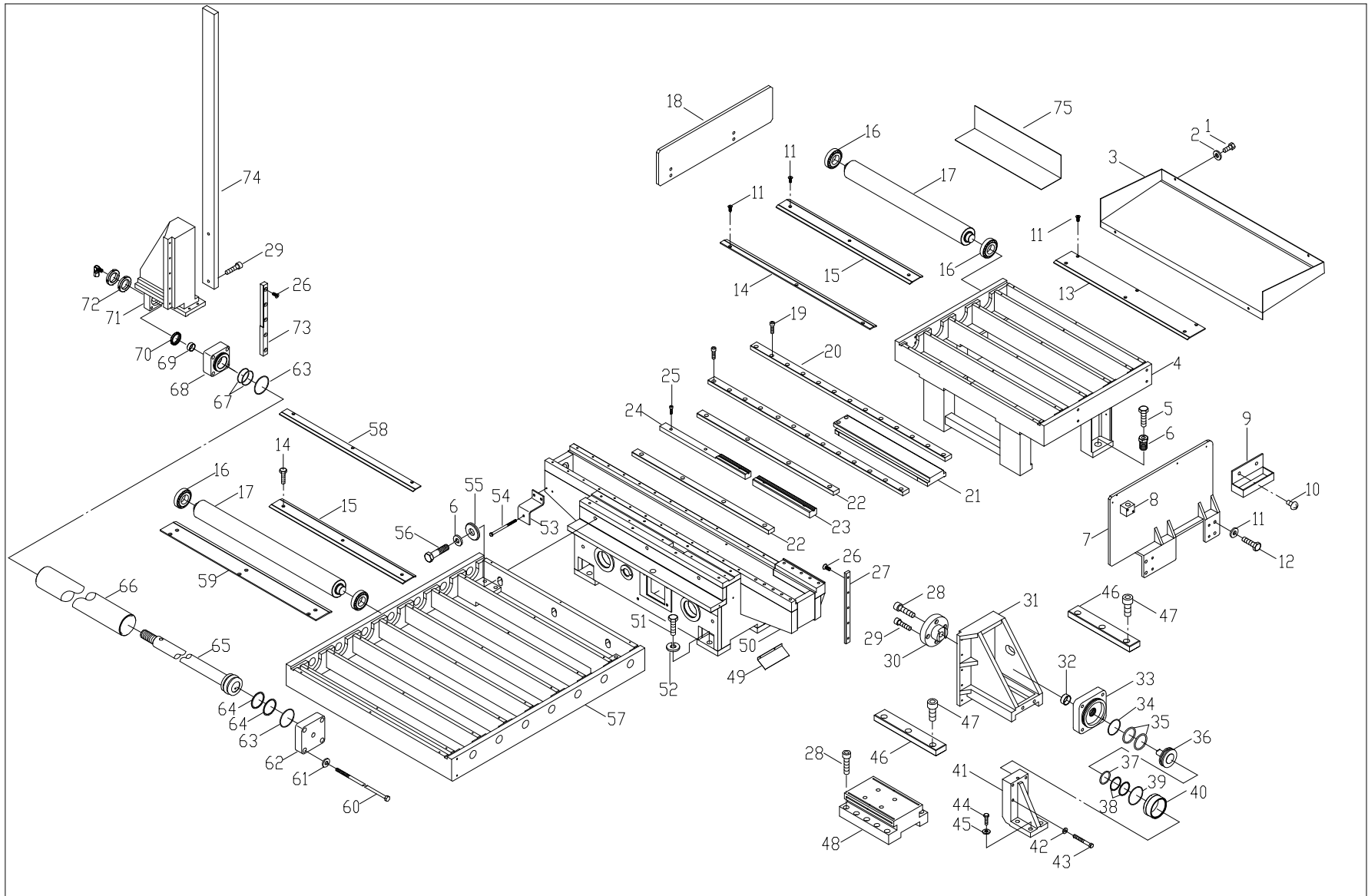
DRAWING NO : 08600800

AMADA COMPANY,LTD.

VERSION:05152009

Index	Parts Name	Drawing No.	Type	Maker	Q'ty	Note
1	IDLER WHEEL	08620400			1	
2	SLEEVE		4DH112		1	
3	ROLLER BEARING		2BR30220		2	
4	RING	08620800			2	
5	SHAFT	08620500			1	
6	LOCKNG WASHER		2AW20		1	
7	LOCKING NUT		2AN20		1	
8	CAP	08620600			1	
9	GREASE NIPPLE		1/4"PT		1	
10	SOC.HD.SCREW		M8x25L		3	
11	SPRING WASHER		M8		3	
12	CAP	08620700			1	
13	FLAT.HD.SCREW		M5x20L		3	
14	SLIDE BLOCK	08621100			1	
15	WASHER	07022000			1	
16	SOC.HD.SCREW		M16x80L		1	
17	SPRING WASHER		M16		1	
18	SLIDE PLATE	07022800			2	
19	SPRING WASHER		M12x30L		6	
20	EX.HD.SCREW		M12		6	
21	LOCKING WASHER		2AW06		2	
22	LOCKING NUT		2AN06		4	
23	HEX.HD.SCREW		M20x80L		3	
24	WASHER		M20		3	
25	ADJUST SCREW	10021100			3	

Index	Parts Name	Drawing No.	Type	Maker	Q'ty	Note
26	NUT	07024500			3	
27	SLIDE BASE	07024300			1	
28	DU BUSING		2DU3525		1	
29	CAP	09051900			1	
30	O RING		4OR-P35		2	
31	O RING		4OR-G135		2	
32	SPRING WASHER		M16		10	
33	SOC.HD.SCREW		M16x50L		6	
34	PISTON ROD	07051900			1	
35	O RING		4OR-P24		1	
36	O RING		4OR-P30		1	
37	PISTON ROD	09052100			1	
38	SEAL		4UPH120		2	
39	CYLINDER TUBE	09052000			1	
40	CAP	09052300			1	
41	WASHER		W5/8"		4	
42	TIE ROD	09052400			4	
43						
44						
45						
46						
47						
48						
49						
50						



REVISED DATE : 02.23.2009

DRAWING NAME :

BED & FRONT VICE ASS'Y

DRAWING NO : 08600900

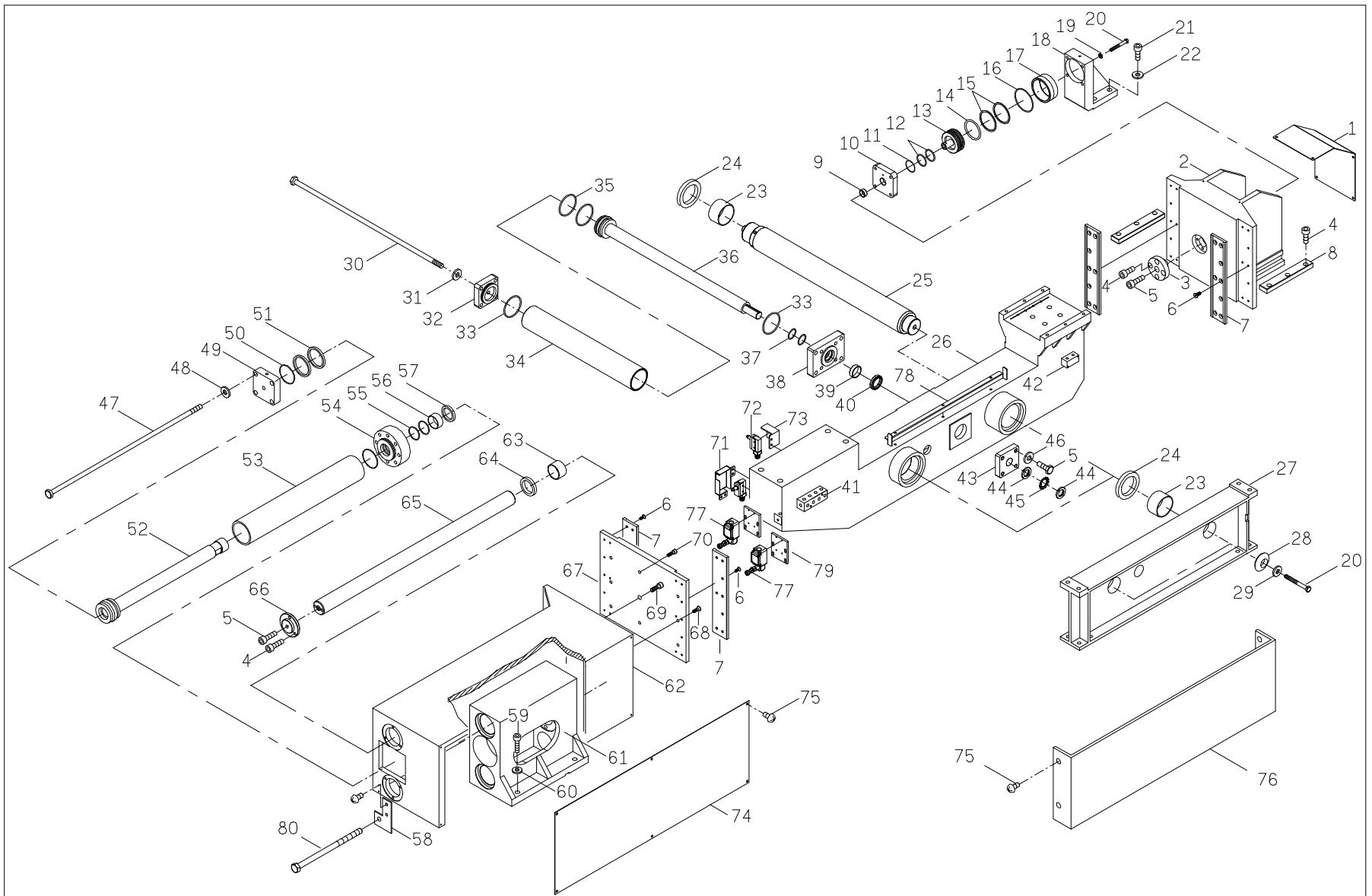
AMADA COMPANY,LTD.

VERSION:05152009

Index	Parts Name	Drawing No.	Type	Maker	Q'ty	Note
1	HEX.HD.SCREW		M6x15L		4	
2	WASHER		M6		6	
3	PLATE	08611800			1	
4	DISCHARGE TRAY	08631201			1	
5	HEX.HD.SCREW		M16x40L		4	
6	HEX.HD.SCREW	06061900			4	
7	WORK FENCE	08610900			1	
8	CONNECT SEAT	01063600			1	
9	CONTROL SEAT	08017700			1	
10	DOME HD. SCREW		M6x15L		2	
11	SPRING WASHER		M12		4	
12	HEX.HD.SCREW		M12x30L		4	
13	PLATE	08614300			1	
14	PLATE	08614400			1	
15	PLATE	08014300			9	
16	BEARING		2BR6207ZZ		22	
17	ROLLER	08032200			10	
18	PLATE	08613400			1	
19	SOC.HD.SCREW		M8x30L		30	
20	BED WEAR PLATE	08630401			2	
21	PLATE	08631300			1	
22	GATE PLATE	08631500			2	
23	BED WEAR PLATE (L)	08631700			1	
24	BED WEAR PLATE (S)	08631600			1	
25	SOC. HD. SCREW		M6x20L		5	

Index	Parts Name	Drawing No.	Type	Maker	Q'ty	Note
26	FLAT HD. SCREW		M8x20L		1	
27	PLATE	08630500			1	
28	SOC. HD. SCREW		M12x40L		11	
29	SOC. HD. SCREW		M10x30L		6	
30	WISE JAW COVER	12032300			1	
31	WISE JAW	08630200			1	
32	OIL SEAL		4DKB253769		1	
33	CYLINDER CAP	08063201			1	
34	O RING		4OR-G80		1	
35	O RING		4OR-P25		2	
36	PISTON ROD	08063300			1	
37	O RING		4OR-P71		1	
38	BACK UP RING		4TP75		2	
39	O RING		4OR-G85-90		1	
40	CYLINDER TUBE	08063100			1	
41	CYLINDER CAP WBASE	08660700			1	
42	WASHER		M10		4	
43	TIE ROD		M10x80L		4	
44	SOC. HD. SCREW		M16x60L		4	
45	WASHER		M16		4	
46	PLATE	08030301			2	
47	SOC, HD. SCREW		M10x30L		6	
48	FLOATING SEAT	08631100			1	
49	PLATE	08611200			1	
50	BED	08630101			1	

Index	Parts Name	Drawing No.	Type	Maker	Q'ty	Note
51	SOC HD. SCREW		M20x40L		4	
52	SPRING WASHER		M20		4	
53	PLATE	08612200			1	
54	HEX.HD.SCREW	02213000			1	
55	WASHER	09141700			3	
56	HEX.HD.SCREW		M16x65L		3	
57	DISCHARGE ROLLER BASE	08630901			1	
58	PLATE	08614500			1	
59	PLATE	08614600			1	
60	TIE ROD	08660600			4	
61	SPRING WASHER		M12		4	
62	CYLINDER CAP	08060700			1	
63	O RING		4OR-G65		2	
64	OIL SEAL		4USH60		2	
65	PISTON ROD	08660400			1	
66	CYLINDER	08060500			1	
67	O RING		4OR-P40		2	
68	CYLINDER CAP	08660500			1	
69	DU BUSHING		2DU4020		1	
70	OIL SEAL		4DKB4052710		1	
71	REAR VISE	08630300			1	
72	LOCKING NUT		2AN06		2	
73	PLATE	08631002			1	
74	STOPPER	08631400			1	
75	PLATE	08613600			1	



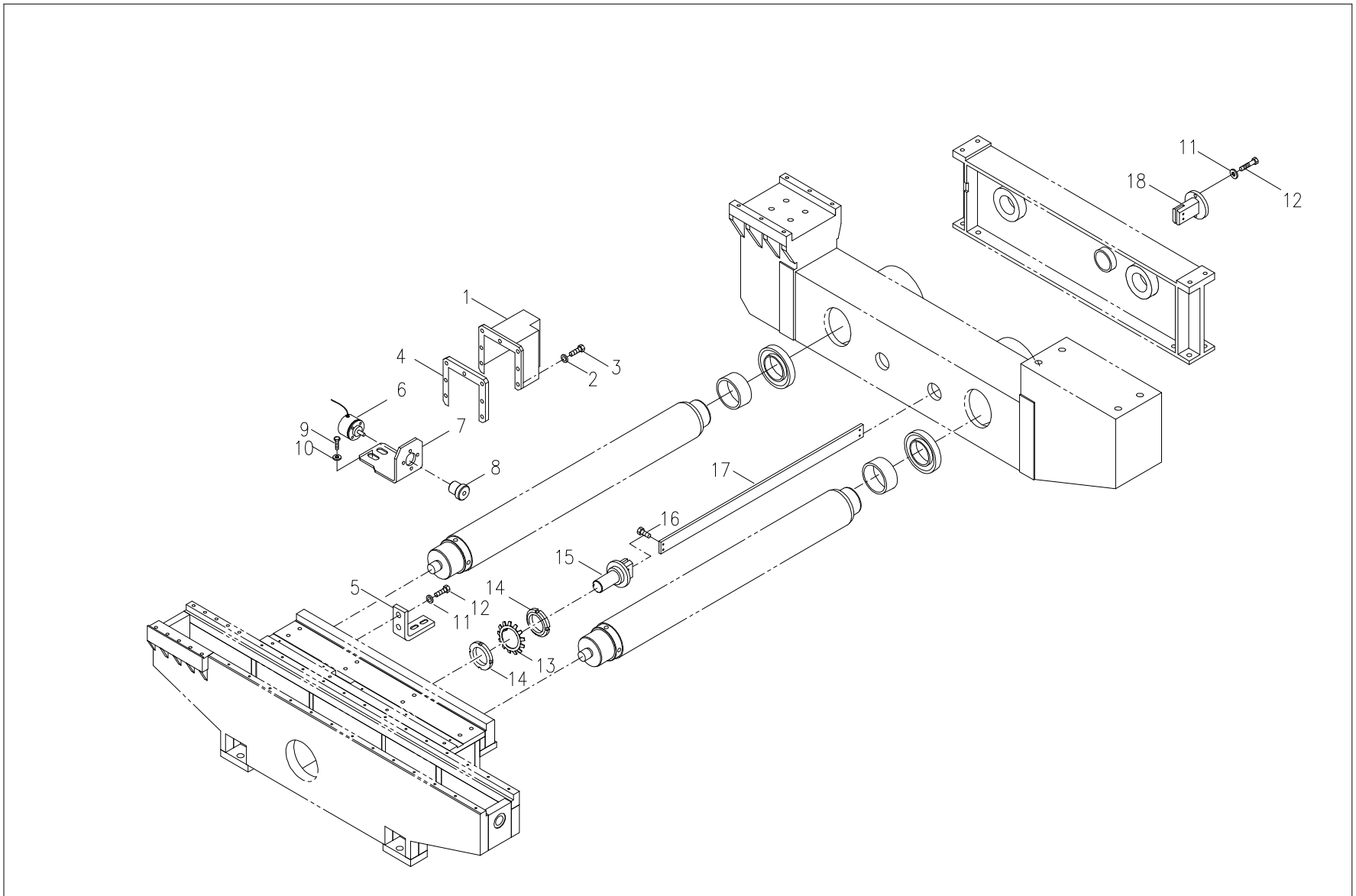
REVISED DATE : 02.23.2009 DRAWING NAME : **SHUTTLE TABLE & FRONT VICE ASS'Y** DRAWING NO : 08601000
 AMADA COMPANY,LTD. VERSION:05152009

Index	Parts Name	Drawing No.	Type	Maker	Q'ty	Note
1	COVER	08614100			1	
2	VIEW JAW	08630601			1	
3	WISE JAW COVER	12032300			1	
4	SOC.HD.SCREW		M10x30L		19	
5	SOC.HD.SCREW		M12x40L		6	
6	FLAT.HD.SCREW		M8x25L		20	
7	WISE WEAR PLATE	08031002			4	
8	PLATE	08030301			2	
9	OIL SEAL		4DKB253769		1	
10	CYLINDER CAP	08063201			1	
11	O RING		4OR-G80		1	
12	O RING		4OR-P25		2	
13	PISTON ROD	08063300			1	
14	O RING		4OR-P71		1	
15	BACK UP RING		4TP75		2	
16	O RING		4OR-G85-90		1	
17	CYLINDER	08063100			1	
18	CYLINDER CAP WBASE	08061402			1	
19	WASHER		M10		4	
20	TIE ROD		M10x80L		4	
21	SOC.HD.SCREW		M16x60L		7	
22	WASHER		M16		4	
23	DU BEARING		2DU9060		4	
24	OIL SEAL		4TC90-115-13		4	
25	GUIDE SHAFT	08631900			2	

Index	Parts Name	Drawing No.	Type	Maker	Q'ty	Note
26	FEED TABLE	08631800			1	
27	BRACKET	08031800			1	
28	WASHER	08021400			2	
29	SPRING WASHER		M16		2	
30	TIE ROD	08061200			4	
31	SPRING WASHER		W1/2"		4	
32	CYLINDER CAP	08661100			1	
33	O RING		4OR-G75		2	
34	CYLINDER TUBE	08061000			1	
35	OILD SEAL		4USH70		2	
36	PISTON ROD	08661200			1	
37	O RING		4OR-P35		2	
38	CYLINDER CAP	08061101			1	
39	DU BUSHING		2DU3512		1	
40	OIL SEAL		4DKB3547710		1	
41	CONNECT SAET	08062401			1	
42	CONNECT SAET	10053600			1	
43	CAP	08061300			1	
44	LOCKING WASHER		2AW06		1	
45	LOCKNG NUT		2AN06		2	
46	SPRING WASHER		M12		4	
47	TIE ROD	19061801			4	
48	SPRING WASHER		W1/2"		4	
49	CAP	08060700			1	
50	O RNG		4OR-G65		2	

Index	Parts Name	Drawing No.	Type	Maker	Q'ty	Note
51	OIL SEAL		4USH60		2	
52	PISTON ROD	08060400			1	
53	CYLINDER	08060500			1	
54	CYLINDER CAP	08060601			1	
55	O RING		4OR-P40		2	
56	DU BUSHING		2DU4020		1	
57	OIL SEAL		4DKB4052710		1	
58	PLATE	08014900			1	
59	SOC.HD.SCREW		M20x60L		4	
60	SPRING WASHER		M20		4	
61	WISE JAW BASE	08632000			1	
62	MOVABLE VISE JAW	08630701			1	
63	DU BUSHING		2DU7560		4	
64	OIL SEAL		4TC75-100-13		4	
65	BAR	08632100			1	
66	CAP	08632200			2	
67	WISE WEAR PLATE	08630801			1	
68	FLAT.HD.SCREW		M10x25L		6	
69	SOC.HD.SCREW		M16x40L		1	
70	SOC.HD.SCREW		M10x30L		2	
71	COVER	07313300			1	
72	LIMIT SWITCH		8SL-ZCD55		2	
73	COVER	13015100			1	
74	COVER	08014000			1	
75	DOME HD. SCREW		M6x10L		17	

Index	Parts Name	Drawing No.	Type	Maker	Q'ty	Note
76	COVER	08013600			1	
77	LIMIT SWITCH		8SL-CA2		1	
78	PLATE	08614000			1	
79	SEAT	09614600			1	
80	HEX.HD.SCREW	02213000			1	
81						
82						
83						
84						
85						
86						
87						
88						
89						
90						
91						
92						
93						
94						
95						
96						
97						
98						
99						
100						

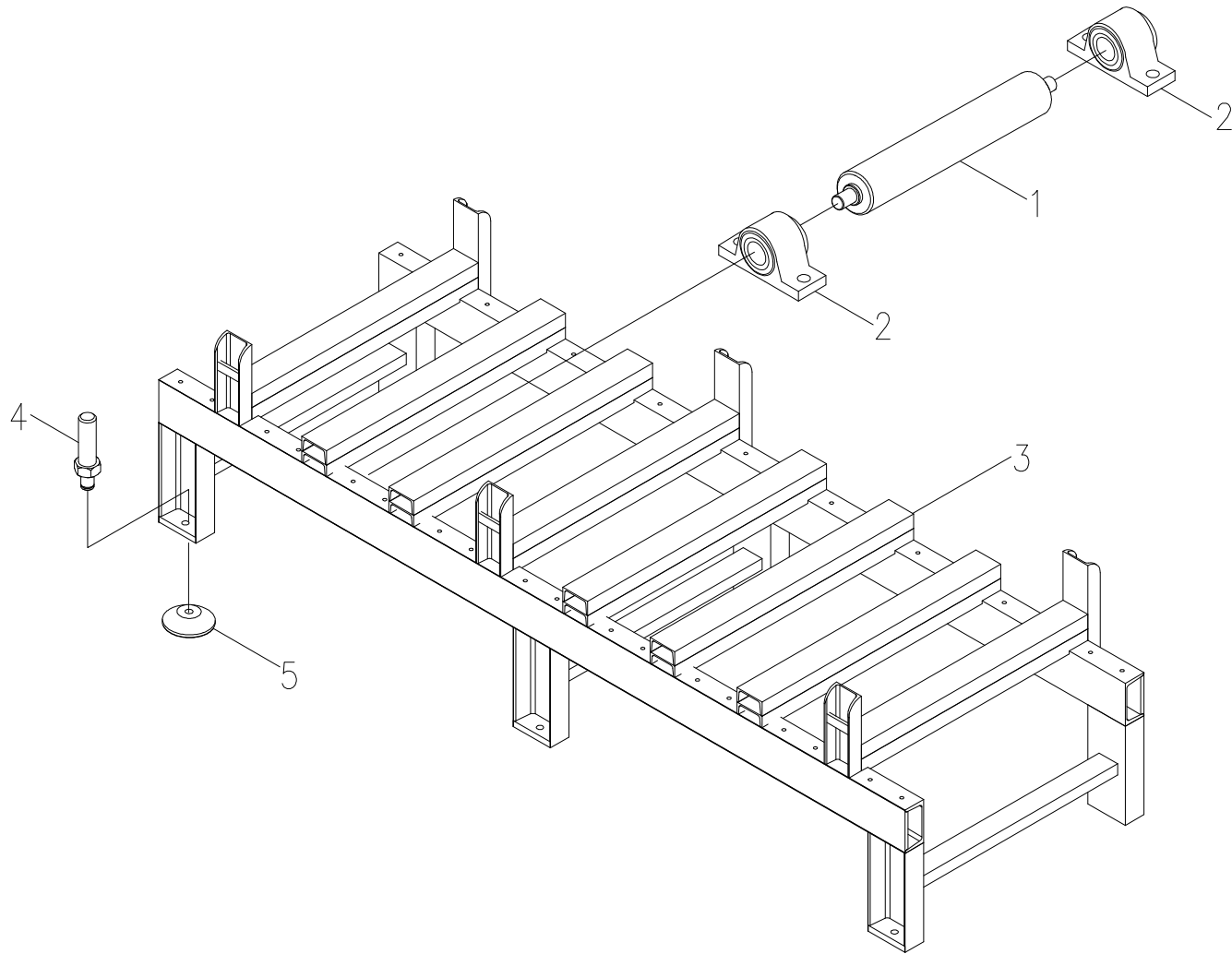


REVISED DATE : 02.23.2009 DRAWING NAME : *INDEX LENGTH & INDEX CYLINDER ASS'Y* DRAWING NO : 08601100

AMADA COMPANY,LTD.

VERSION:05152009

Index	Parts Name	Drawing No.	Type	Maker	Q'ty	Note
1	COVER	08018202			1	
2	SPRING WASHER		M6		7	
3	HEX. HD. SCREW		M6x10L		7	
4	PU PLATE	0801E600			1	
5	BASE	08052201			1	
6	ENCODER		8EN-1000RZW		1	
7	PLATE	08053000			1	
8	GEAR	08052800			1	
9	HEX. HD. SCREW		M10x30L		2	
10	SPRING WASHER		M10		2	
11	SPRING WASHER		M8		2	
12	HEX.HD.SCREW		M8x25L		2	
13	LOCKING WASHER		2AW06		1	
14	LOCKING NUT		2AN06		2	
15	RACK SEAT (REAR)	08650100			1	
16	HEX.HD.SCREW		M5x30L		2	
17	RACK	08051800			1	
18	RACK SEAT (FRONT)	08051900			1	
19	SPRING WASHER		M8		1	
20	HEX.HD.SCREW		M8x25L		2	
21	NUT		M12		1	
22	HEX.HD.SCREW		M12x60L		1	
23						
24						
25						



REVISED DATE : 02.23.2009

DRAWING NAME :

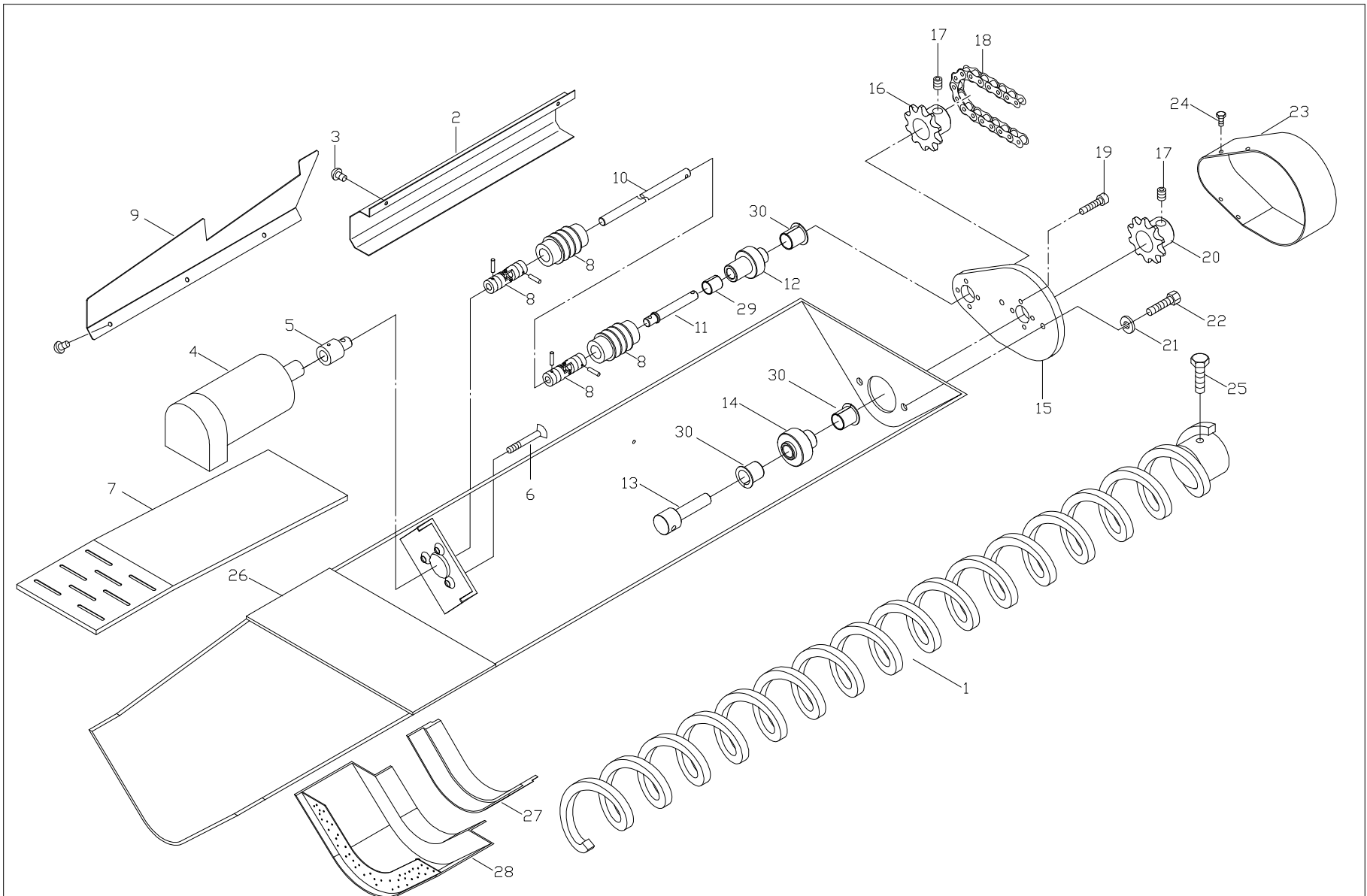
ROLLER TABLE ASS'Y

DRAWING NO : 08601500

AMADA COMPANY,LTD.

VERSION:05152009

Index	Parts Name	Drawing No.	Type	Maker	Q'ty	Note
1	ROLLER	07060601			9	
2	BEARING		2UCP207		18	
3	FRAME	08070702			1	
4	ADJUST SCREW	10060601			6	
5	FOOD PAD	07061500			6	
6						
7						
8						
9						
10						
11						
12						
13						
14						
15						
16						
17						
18						
19						
20						
21						
22						
23						
24						
25						



REVISED DATE : 02.23.2009

DRAWING NAME :

CHIP CONVEYOR ASS'Y

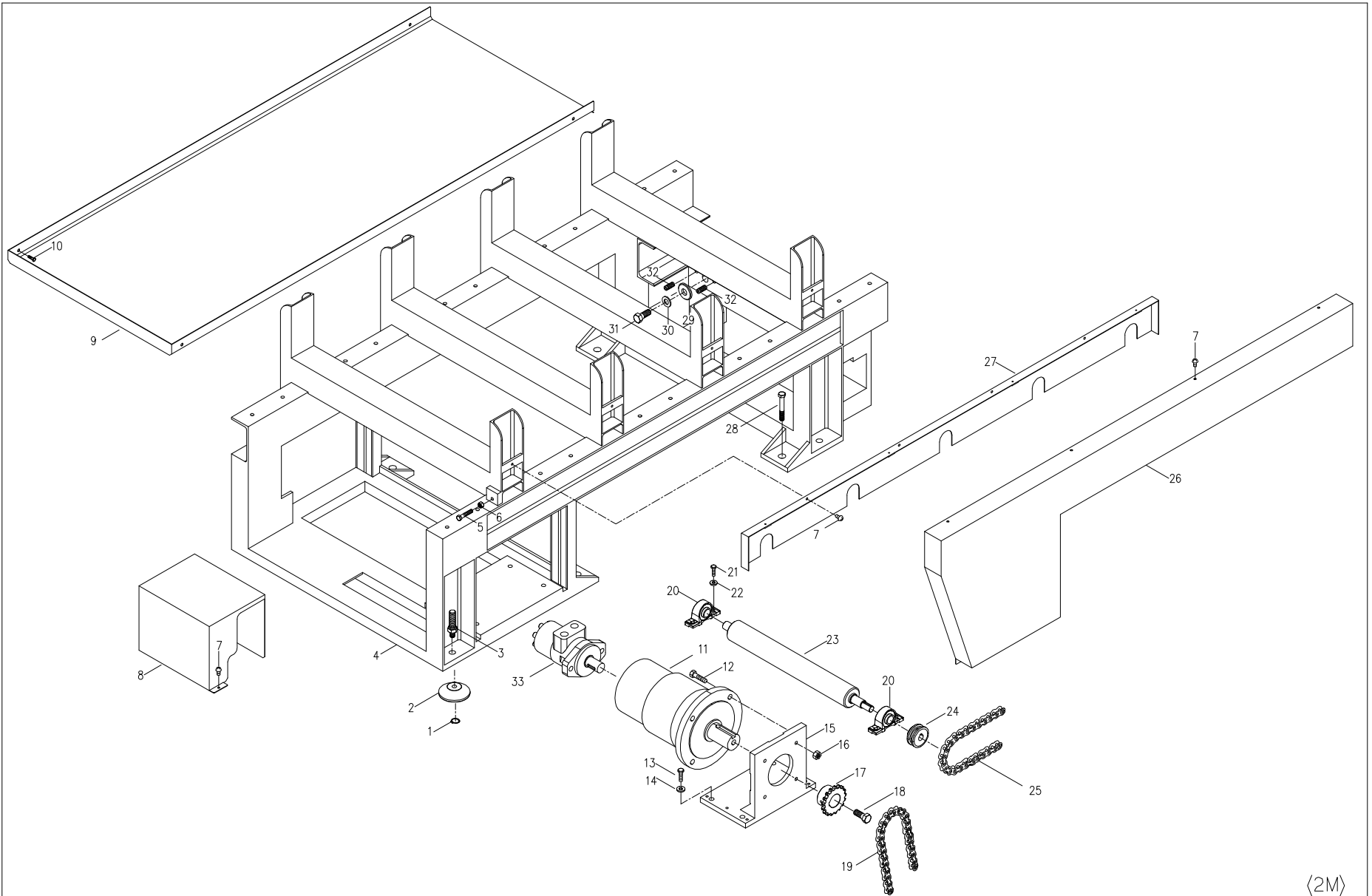
DRAWING NO : 08601800

AMADA COMPANY,LTD.

VERSION:05152009

Index	Parts Name	Drawing No.	Type	Maker	Q'ty	Note
1	SPIRAL	08421000			1	
2	COVER	08414100			1	
3	DOVE. HD. SCREW		M6x10L		2	
4	MOTOR & REDUCER		3HM-OMM32		1	
5	CONNECTION	08421300			1	
6	PLAT.HD.SCREW		M6x90L		4	
7	COVER	0801C601			1	
8	UNIVERSAL JOINT		5UJ-NJ16		2	
9	COVER	08613500			1	
10	SHAFT	08421400			1	
11	SHAFT	08421100			1	
12	CHAIN WHEET SEAT	08421600			1	
13	SHAFT	08421200			1	
14	SEAT	08421500			1	
15	BEARING	08411000			1	
16	SPROCKET	08420800			1	
17	SET SCREW		M8x10L		2	
18	CHINA		5CNRS35		1	
19	SOC. HD. SCREW		M8x25L		8	
20	SPROCKET	08420900			1	
21	HEX. HD. SCREW		M8x25L		2	
22	NUT		M8		2	
23	COVER	08410900			1	
24	HEX. HD. SCREW		M6x10L		4	
25	STAINLESS STEEL SCREW		M8x20L		1	

Index	Parts Name	Drawing No.	Type	Maker	Q'ty	Note
26	CONVEYOR BODY	08413200			1	
27	SUPPORT	08411300			1	
28	SUPPORT	08410800			1	
29	DU BUSHING		2DU1620		1	
30	DU BUSHING		2DUF1620-24		3	
31						
32						
33						
34						
35						
36						
37						
38						
39						
40						
41						
42						
43						
44						
45						
46						
47						
48						
49						
50						



(2M)

REVISED DATE : 02.23.2009

DRAWING NAME :

POWER ROLLER TABLE ASS'Y

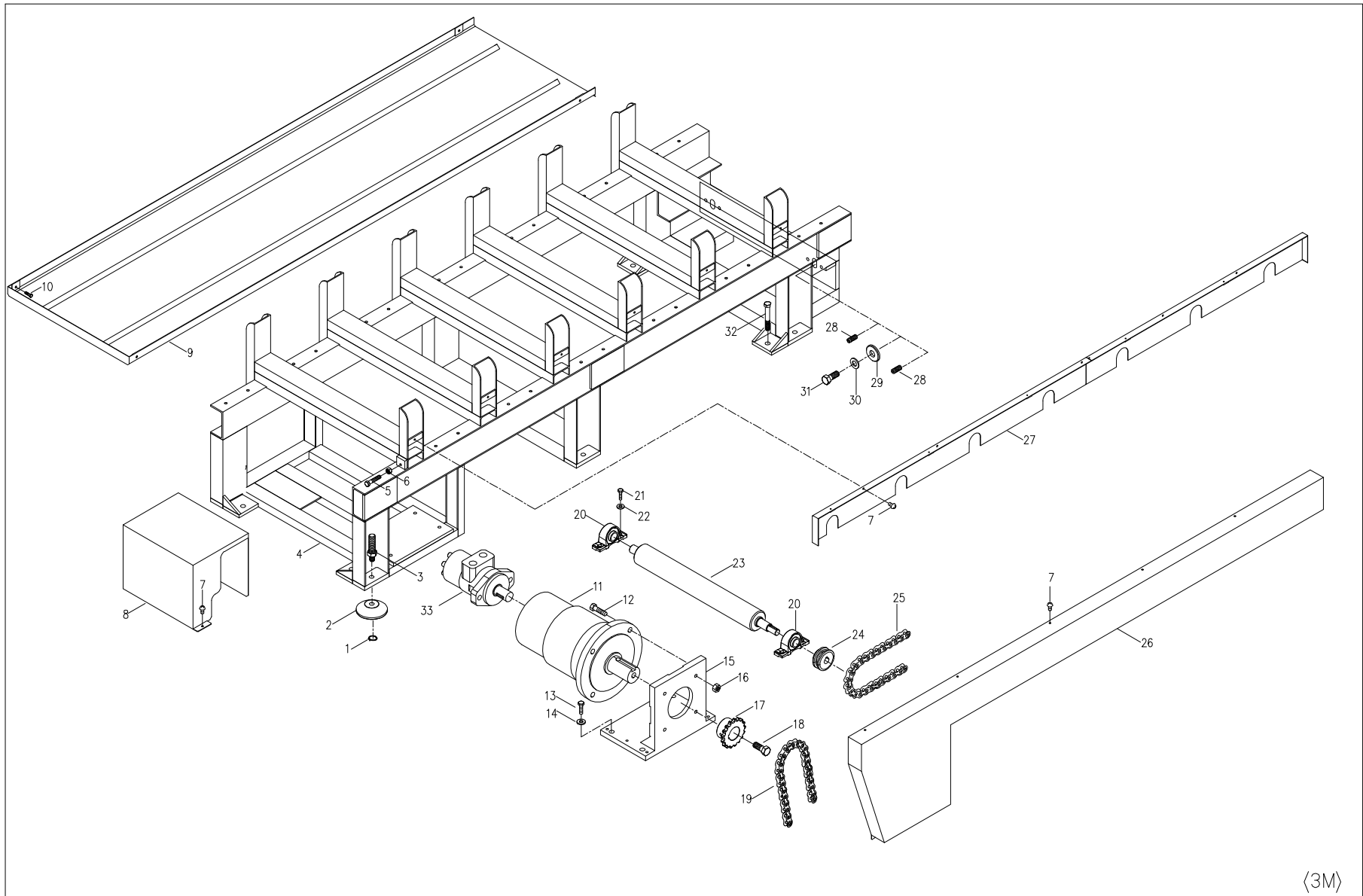
DRAWING NO : 08001900

AMADA COMPANY,LTD.

VERSION:05152009

Index	Parts Name	Drawing No.	Type	Maker	Q'ty	Note
1	RETAINING RING		5CR-A18		4	
2	PAD	07061500			4	
3	ADJUSTING SCREW	10060601			4	
4	FRAME	08071000			1	
5	HEX. HD. SCREW		M12x60L		1	
6	NUT		M12		1	
7	DOVE. HD. SCREW		M6x10L		13	
8	COVER	08615200			1	
9	PLATE	0801E900			1	
10	HEX. HD. SCREW		M8x15L		4	
11	MOTOR		1RD-MF301-18.1A		1	
12	HEX. HD. SCREW		M14x50L		4	
13	HEX. HD. SCREW		M16x50L		4	
14	SPRING WASHER		M16		4	
15	MOTOR BASE	08070900			1	
16	NUT		M14		4	
17	SPROCKET	08022000			1	
18	HEX. HD. SCREW		M16x40L		1	
19	CHAIN		5CNRS60		1	
20	BEARING SEAT		2UCP208		10	
21	HEX. HD. SCREW		M14x30L		20	
22	WASHER		M14		20	
23	ROLLER	07060401			5	
24	SPROCKET	07060300			5	
25	CHAIN		5CNRS63		4	

Index	Parts Name	Drawing No.	Type	Maker	Q'ty	Note
26	COVER	0801F200			1	
27	COVER	0801F100			1	
28	SCREW	M20x140L			4	
29	WASHER	06041500			2	
30	WASHER		M16		2	
31	HEX. HD. SCREW		M16x40L		2	
32	SET SCREW		M16x40L		4	
33	MOTOR		3HM-A100		1	
34						
35						
36						
37						
38						
39						
40						
41						
42						
43						
44						
45						
46						
47						
48						
49						
50						



<3M>

REVISED DATE : 02.23.2009

DRAWING NAME :

POWER ROLLER TABLE ASS'Y

DRAWING NO : 08601910

AMADA COMPANY,LTD.

VERSION:05152009

Index	Parts Name	Drawing No.	Type	Maker	Q'ty	Note
1	RETAINING RING		5CR-A18		6	
2	PAD	07061500			4	
3	ADJUSTING SCREW	10060601			4	
4	FRAME	08670100			1	
5	HEX. HD. SCREW		M12x60L		1	
6	NUT		M12		1	
7	DOME. HD. SCREW		M6x10L		13	
8	COVER	08615200			1	
9	PLATE	08615300			1	
10	HEX. HD. SCREW		M8x15L		4	
11	MOTOR		1RD-MF301-18.1A		1	
12	HEX. HD. SCREW		M14x50L		4	
13	HEX. HD. SCREW		M16x50L		4	
14	SPRING WASHER		M16		4	
15	MOTOR BASE	08070900			1	
16	NUT		M14		4	
17	SPROCKET	08022000			1	
18	HEX. HD. SCREW		M16x40L		1	
19	CHAIN		5CNRS60		1	
20	BEARING SEAT		2UCP208		14	
21	HEX. HD. SCREW		M14x30L		28	
22	WASHER		M14		28	
23	ROLLER	07060401			7	
24	SPROCKET	07060300			7	
25	CHAIN		5CNRS63		6	

Index	Parts Name	Drawing No.	Type	Maker	Q'ty	Note
26	COVER	08615000			1	
27	COVER	08615100			1	
28	SCREW	M20x140L			4	
29	WASHER	06041500			2	
30	WASHER		M16		2	
31	HEX. HD. SCREW		M16x40L		2	
32	SET SCREW		M16x40L		4	
33	MOTOR		3HM-A100		1	
34						
35						
36						
37						
38						
39						
40						
41						
42						
43						
44						
45						
46						
47						
48						
49						
50						