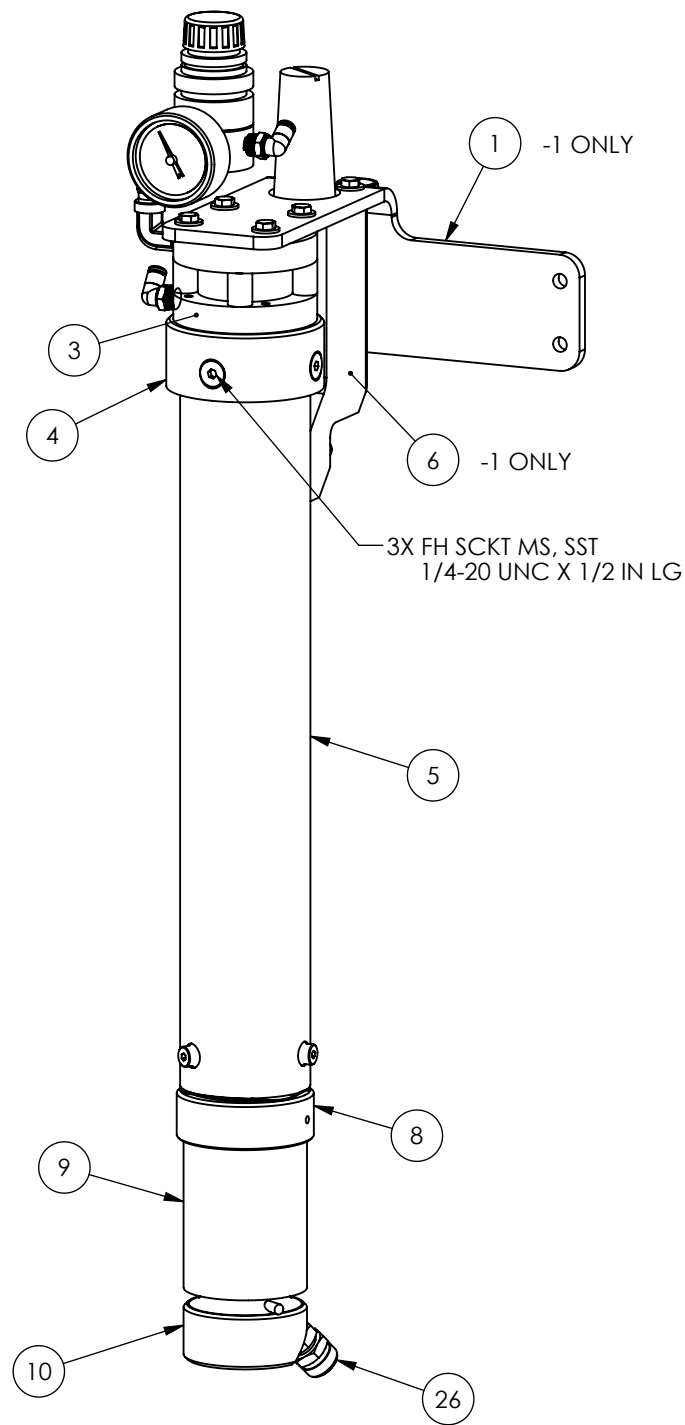
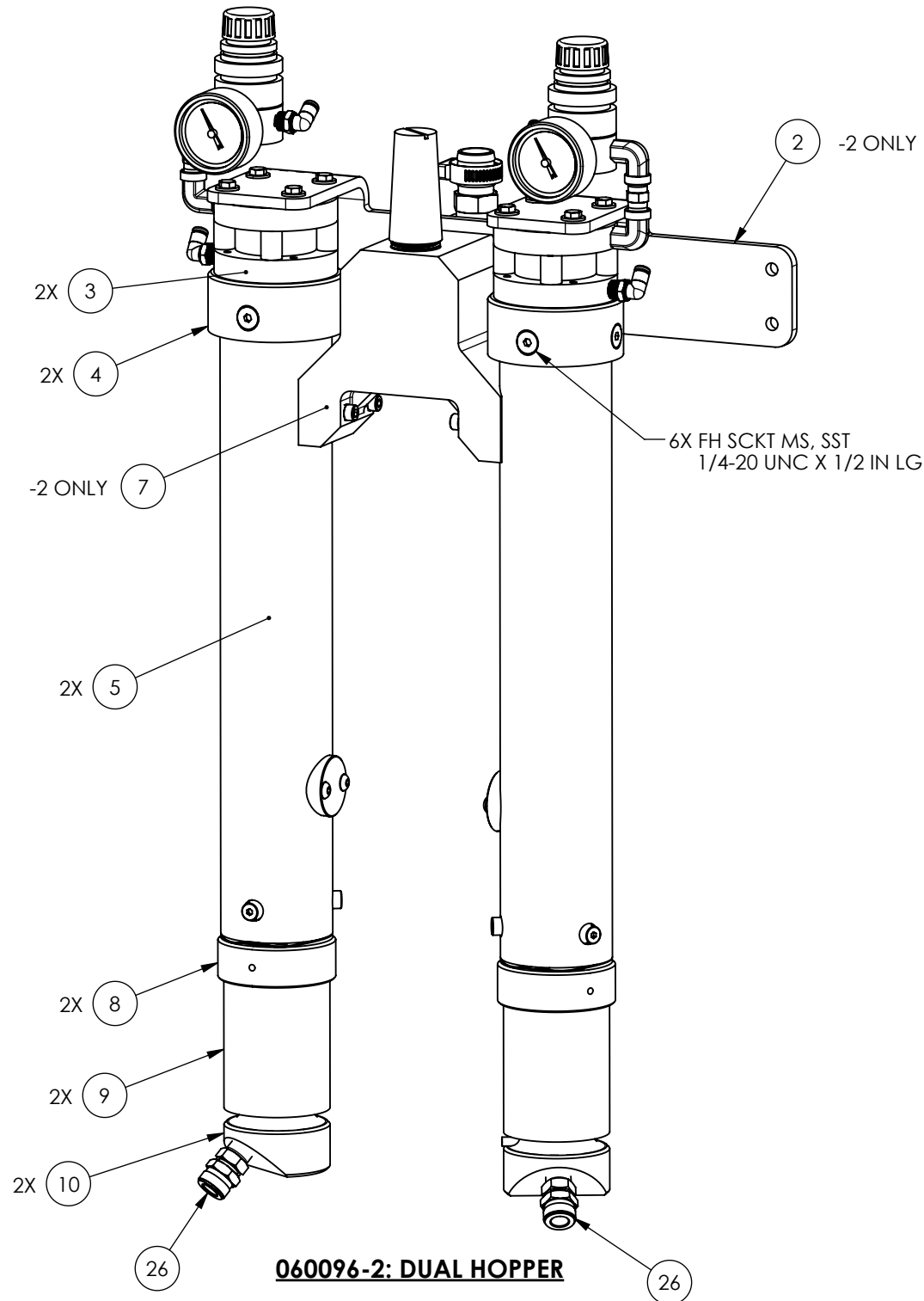


NOTES:

101 ITEM NOT SHOWN.



060096-1: SINGLE HOPPER



060096-2: DUAL HOPPER

ITEM	-2	-1	U/M	PART NUMBER	DESCRIPTION
1	-	1	EA	060699-1	BRACKET;SINGLE;ABR METERING VLV
2	1	-	EA	060080-1	BRACKET;DUAL;ABR METERING VLV
3	2	1	EA	A-11072	CYLINDER;AIR;SST;1 1/2 IN;.75 IN
4	2	1	EA	009922-3	CAP;METERING VLV;PASER 3
5	2	1	EA	060701-1	CYLINDER;MINI HOPPER
6	-	1	EA	060698-1	MANIFOLD;INLET;ABRASIVE
7	1	-	EA	060086-1	MANIFOLD;WYE;ABRASIVE
8	2	1	EA	009927-1	HOUSING ASSY;METERING VLV;PASER 3
9	2	1	EA	009928-1	SHROUD;METERING VLV;PASER 3
10	2	1	EA	009929-1	DIVERTER;LKG;METERING VLV;PASER 3
11	2	1	EA	A-11073	BUMPER;RBR;60 DUROMETER;3/4 X 7/16
12	2	1	EA	060082-1	PLUNGER;METERING VALVE
13	2	1	EA	A-0665-2	NIPPLE;HEX;BRS;1/8NPT;1.06 IN LG
14	4	2	EA	A-0652-1	ELBOW;BANDED;90D;BRS;SCH 40;1/8NPT
15	2	1	EA	A-11093	GAUGE;BACK MT;60 PSI
16	2	1	EA	A-11142	REGULATOR;AIR;RELIEVING;0-30PSI;1/8 NPT
17	4	2	EA	A-15083-18	ELBOW;COMPR;SWVL;90 DEG;NYL;4 MM;1/8NPT
18	1	1	EA	A-0520-4	ELBOW;BANDED;90D;CAST BRZ;1/2NPT;1/2NPT
19	1	1	EA	A-0825-11	ADAPTER;BARBED;HEX;BRS;3/4 IN;1/2NPT
20	1	1	EA	A-0807-5	CLAMP;HOSE;WORM DRIVE;SST;1 1/2 IN
21	1	1	EA	A-32082-6	MUFFLER;AIR EXHAUST;SGL CHAMBER;3/4 FPTM
22	6	3	EA	A-0275-133	O-RING;BUNA-N;70A;-133
23	2	1	EA	A-0275-126	O-RING;BUNA-N;70A;-126
24	2	1	EA	A-11077	SPRING;WAVE;SST;2.0 ID;2.37 OD;40 LBS
25	2	1	EA	010295-1	SPARES KIT;METERING DISK;ABR XFER
26	2	1	EA	A-00592-12	ADAPTER;COMPR;HEX;SST;3/8 IN;1/4NPT

101

ENGINEERING REFERENCE	
PART NUMBER	DESCRIPTION
060096-1	SINGLE MINI-HOPPER
060096-2	DUAL MINI-HOPPER



COMPLETE METALWORKING SOLUTIONS

(800) 991-4225

www.ahbinc.com
ISO Certified
customerservice@ahbinc.com

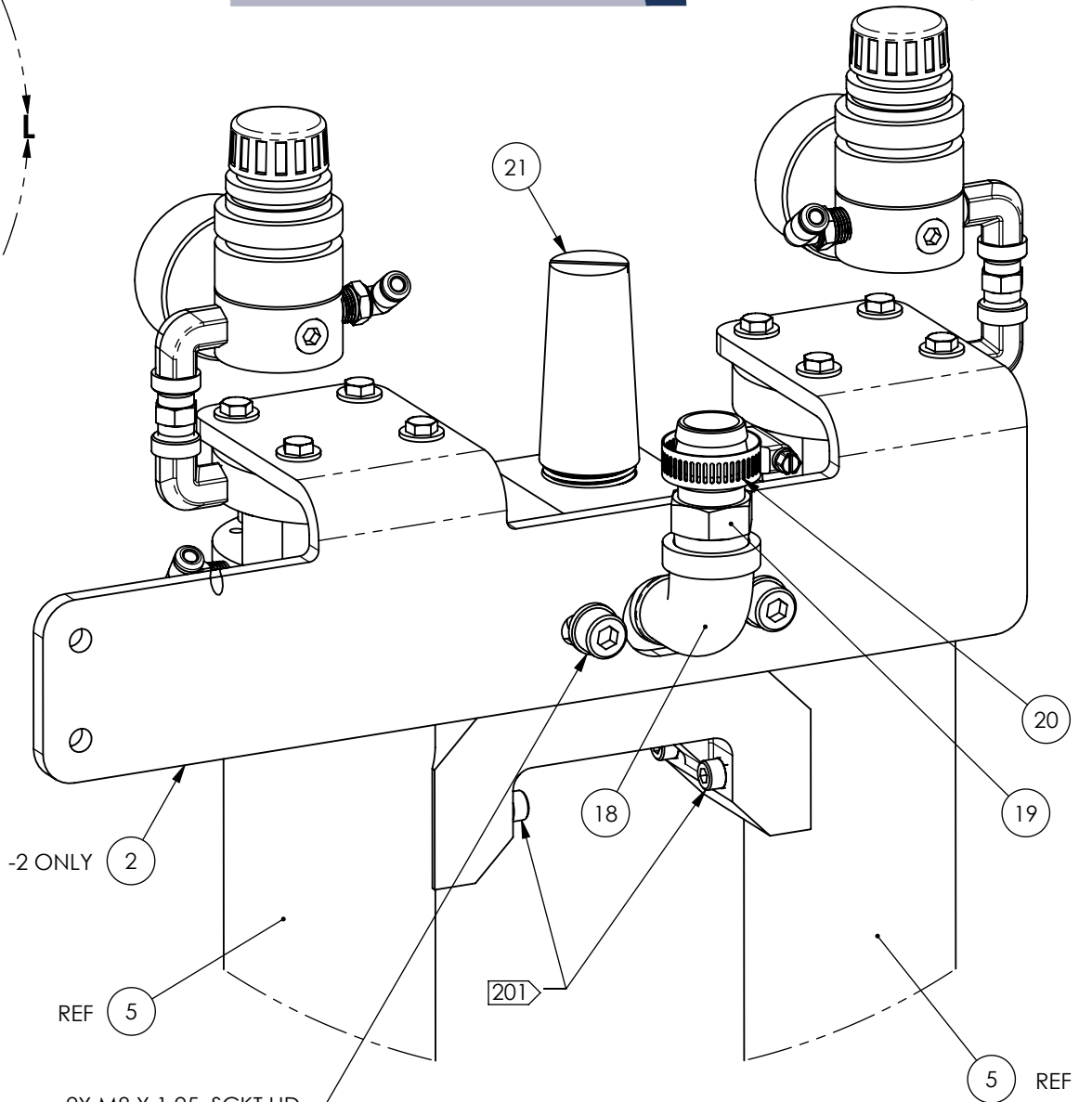
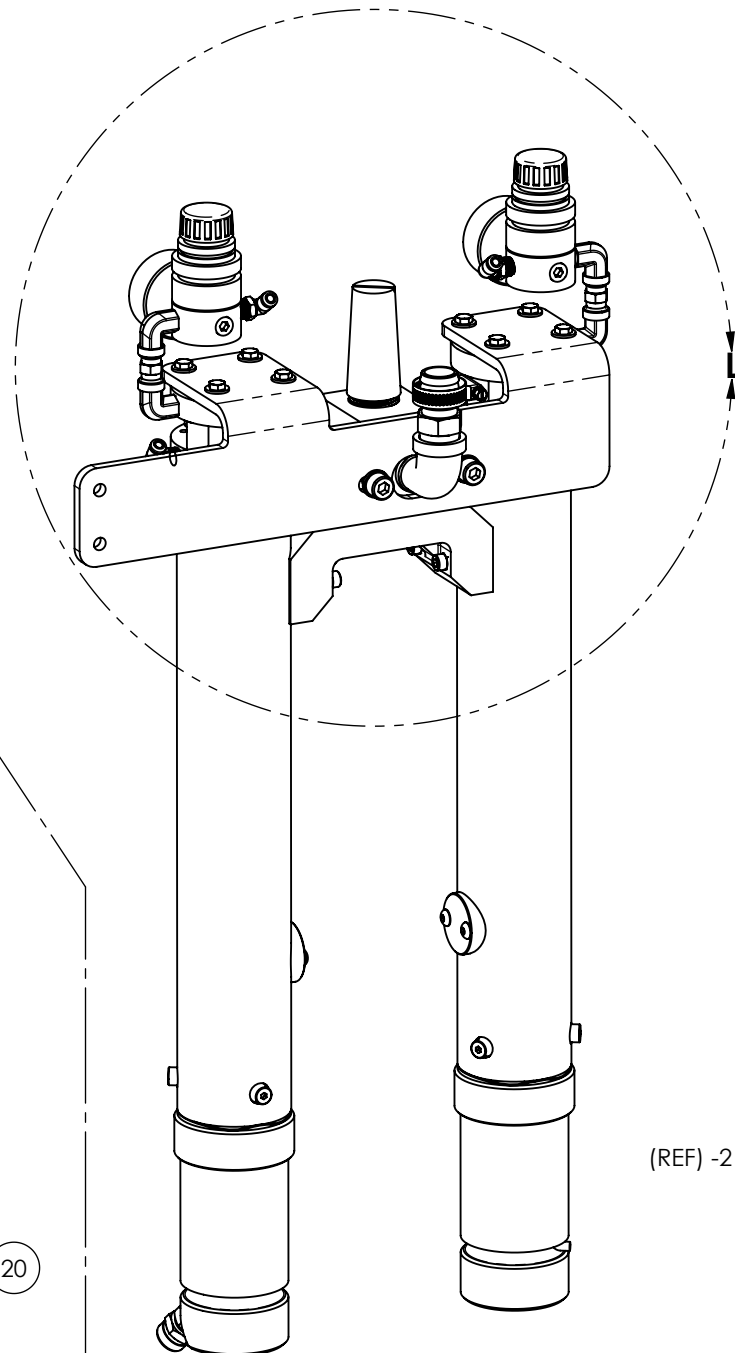
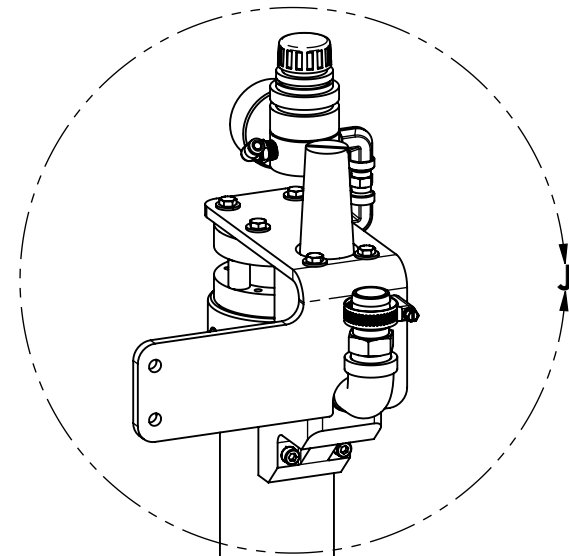
THIRD ANGLE PROJECTION		THIS DRAWING IS THE PROPERTY OF FLOW INTERNATIONAL CORPORATION AND IS NOT TO BE COPIED OR REPRODUCED WITHOUT THE WRITTEN CONSENT OF FLOW INTERNATIONAL CORPORATION.		
	MATERIAL	SEE BOM		
DRAWN BY K. CLAEYS	STARTED 05/13/2017	ENG M. CERAMI	EST WEIGHT NONE	MODELED IN SOLIDWORKS
TITLE METERING VALVE ASSY				
REVISION A	SCALE 1:3.5	BASE PART NUMBER	060096	1 OF 3

NOTES:
 [201] FASTENERS SUPPLIED WITH ITEM 5.



**COMPLETE
 METALWORKING
 SOLUTIONS**

(800) 991-4225
 www.ahbinc.com
 ISO Certified
 customerservice@ahbinc.com



2X HEX HD. CS, SST
 #10-24 UNC X .75 IN LG
 2X FLT WASHER, SST, #10

2X M8 X 1.25, SCKT HD
 CAP SCREW, 22MM LG., SST
 2X 1/4 LW, SST
 2X 1/4 FLW, SST

060096-1: SINGLE HOPPER

060096-21: DUAL HOPPER

**DETAIL L
 SCALE 1 : 2**

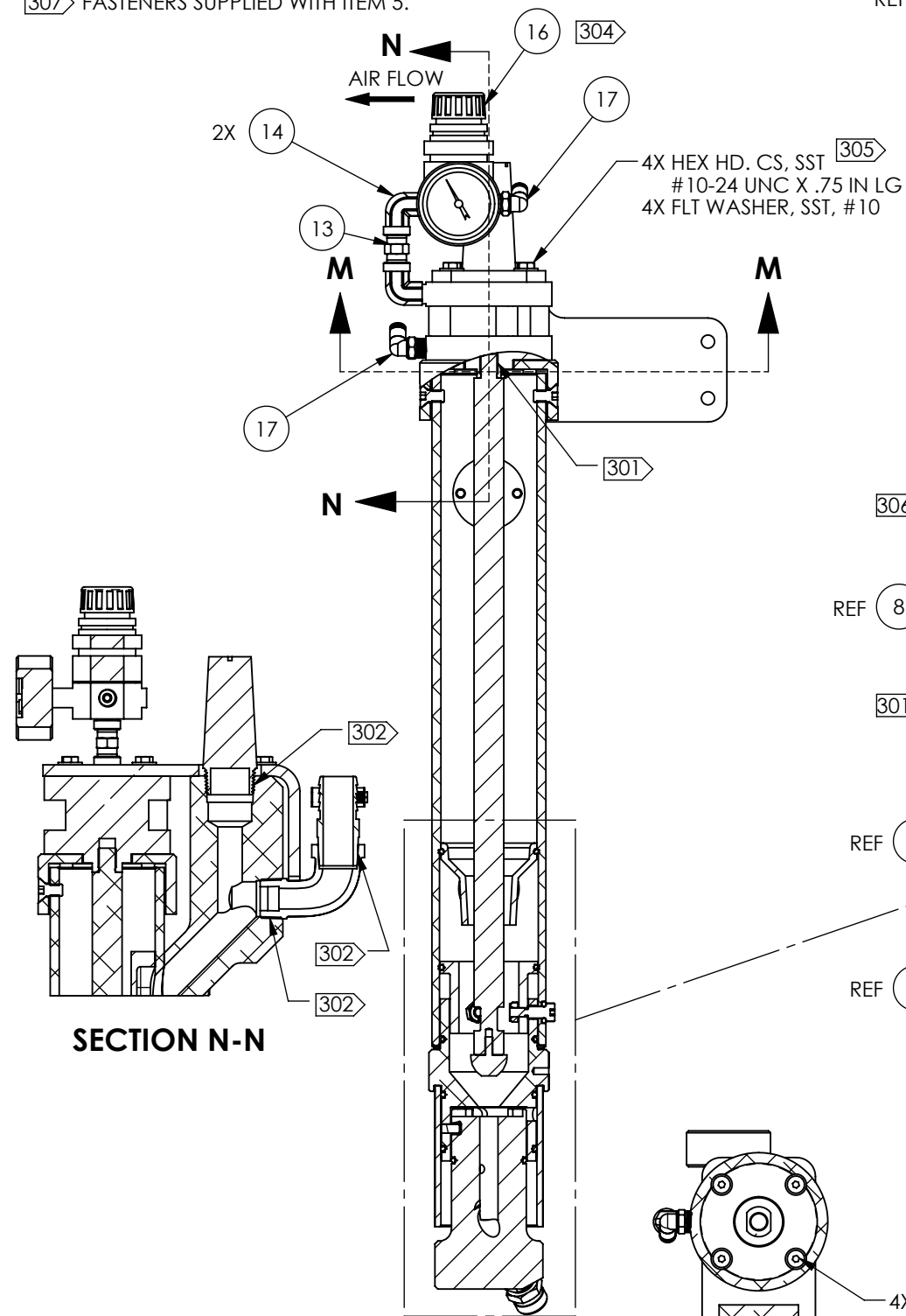
**DETAIL J
 SCALE 1 : 2**

UNCONTROLLED COPY. USER IS RESPONSIBLE FOR VERIFYING THE CURRENT REVISION LEVEL.

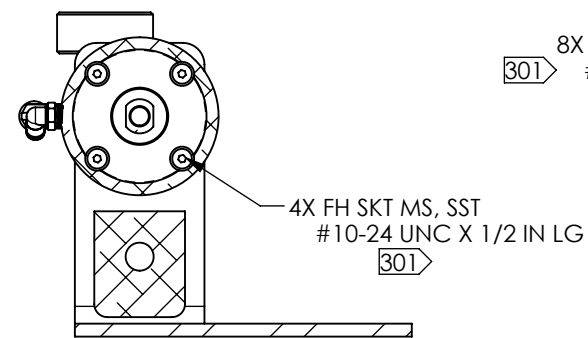
THIRD ANGLE PROJECTION 		THIS DRAWING IS THE PROPERTY OF FLOW INTERNATIONAL CORPORATION AND IS NOT TO BE COPIED OR REPRODUCED WITHOUT THE WRITTEN CONSENT OF FLOW INTERNATIONAL CORPORATION.		
	MATERIAL	SEE BOM		
DRAWN BY K. CLAEYS	STARTED 05/13/2017	ENG M. CERAMI	EST WEIGHT NONE	MODELED IN SOLIDWORKS
TITLE METERING VALVE ASSY				
REVISION A	SCALE 1:4	BASE PART NUMBER	060096	2 OF 3

NOTES:

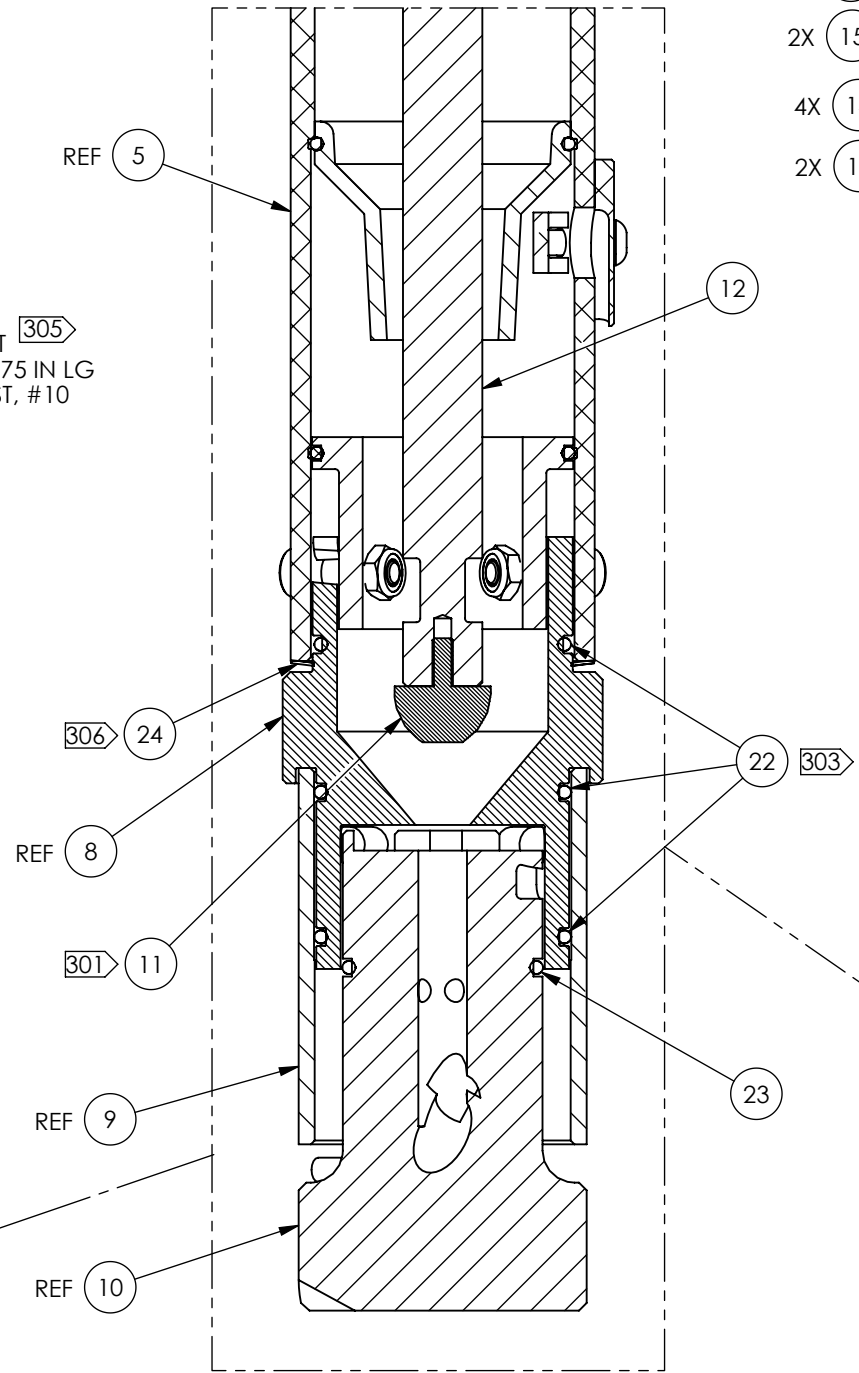
- 301 > APPLY LOCTITE 242 TO THREADS.
- 302 > APPLY TEFLON TAPE TO THREADS.
- 303 > APPLY SILICONE TO O-RINGS.
- 304 > SET ITEM XX TO 15-20 PSI PRIOR TO OPERATION.
- 305 > INSTALL FASTENERS INTO THREADED HOLE IN ITEM 3.
- 306 > SHARP EDGES OF WAVE SPRING DOWN.
- 307 > FASTENERS SUPPLIED WITH ITEM 5.



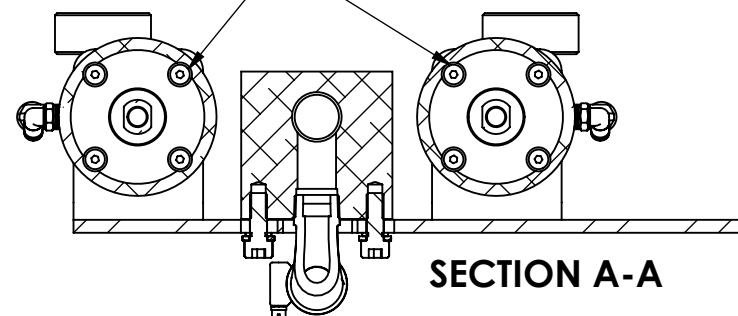
060096-1: SINGLE HOPPER



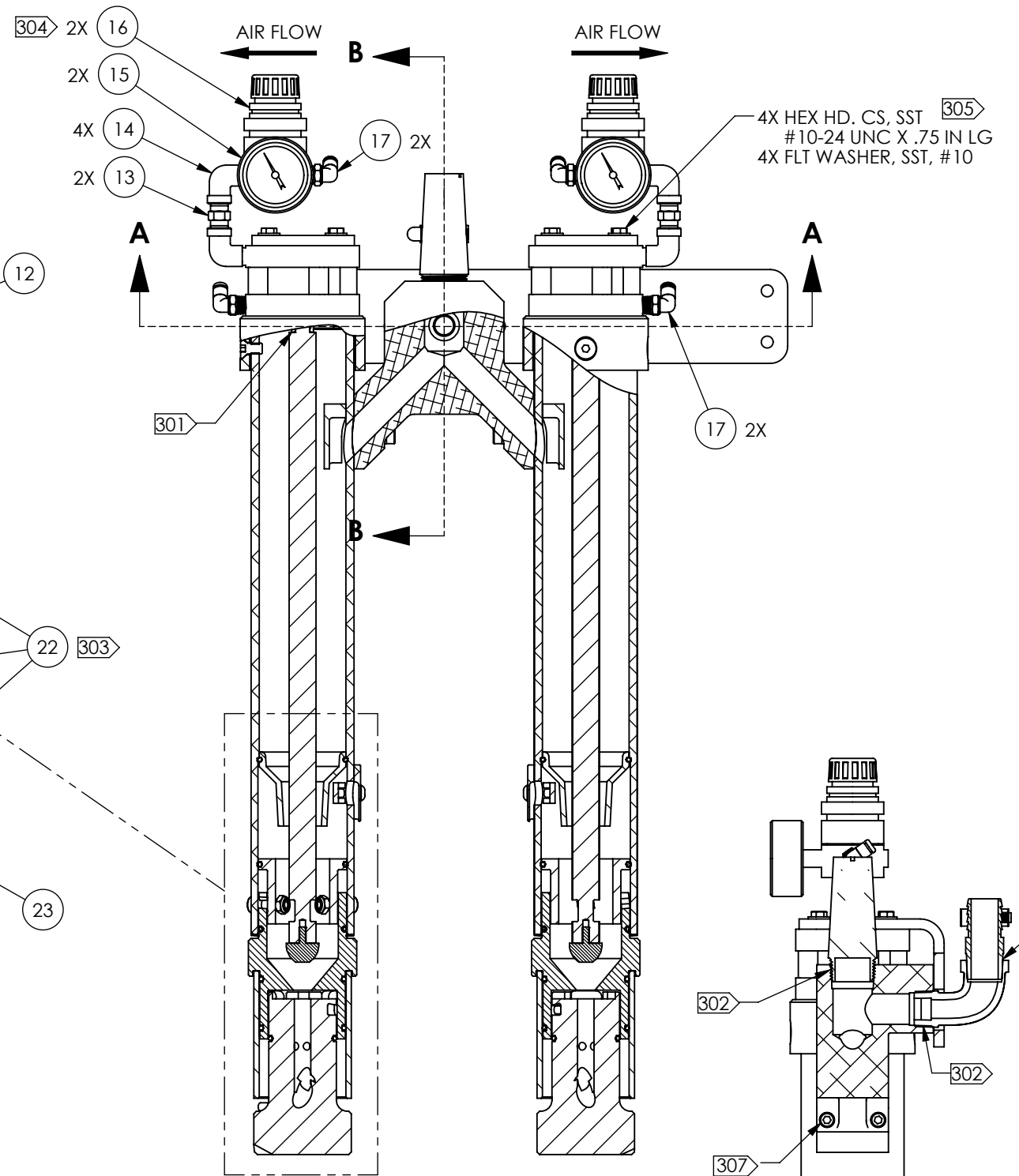
SECTION M-M



8X FH SKT MS, SST
301 #10-24 UNC X 1/2 IN LG



SECTION A-A



060096-2: DUAL HOPPER

SECTION B-B

UNCONTROLLED COPY. USER IS RESPONSIBLE FOR VERIFYING THE CURRENT REVISION LEVEL.

THIRD ANGLE PROJECTION				THIS DRAWING IS THE PROPERTY OF FLOW INTERNATIONAL CORPORATION AND IS NOT TO BE COPIED OR REPRODUCED WITHOUT THE WRITTEN CONSENT OF FLOW INTERNATIONAL CORPORATION.			
DRAWN BY K. CLAEYS				MATERIAL SEE BOM		EST WEIGHT NONE	
TITLE METERING VALVE ASSY		STARTED 05/13/2017		ENG M. CERAMI		MODELED IN SOLIDWORKS	
REVISION A		SCALE 1:3.5		BASE PART NUMBER 060096		3 OF 3	