

FACILITY REQUIREMENTS	
<b>MAIN SYSTEM</b>	
AIR	538L/MIN (19SCFM) @ 6.9-8.3 BAR (100-120 PSI) FOR Z-AXIS END EFFECTOR AND (OPTIONAL) WATER LEVEL CONTROL ADDITIONAL 538 L/MIN (19 SCFM) INTERMITTENT REQUIRED PER Z-AXIS END EFFECTOR FOR (OPTIONAL) ULTRAPIERCE VACCUM ASSIST
WATER	7.6 L/MIN (2 GPM) @ 4.1 BAR (60 PSI)
<b>CATCHER</b>	
DRAIN	1" NPT GRAVITY DRAIN
<b>ABRASIVE BULK TRANSFER (ABT)</b>	
AIR	SEE ABT PRE-INSTALL DRAWING FOR REQUIREMENTS
<b>PUMP</b>	
AIR	SEE PUMP PRE-INSTALL DRAWING FOR REQUIREMENTS
WATER	
POWER	
<b>ELECTRICAL REQUIREMENTS</b>	
<b>3-PHASE VOLTAGE/FREQUENCY</b>	<b>MAIN CIRCUIT BREAKER SIZE</b>
480 VAC - 60 HZ	20 AMP
400 VAC - 50 HZ	20 AMP

NOTES:

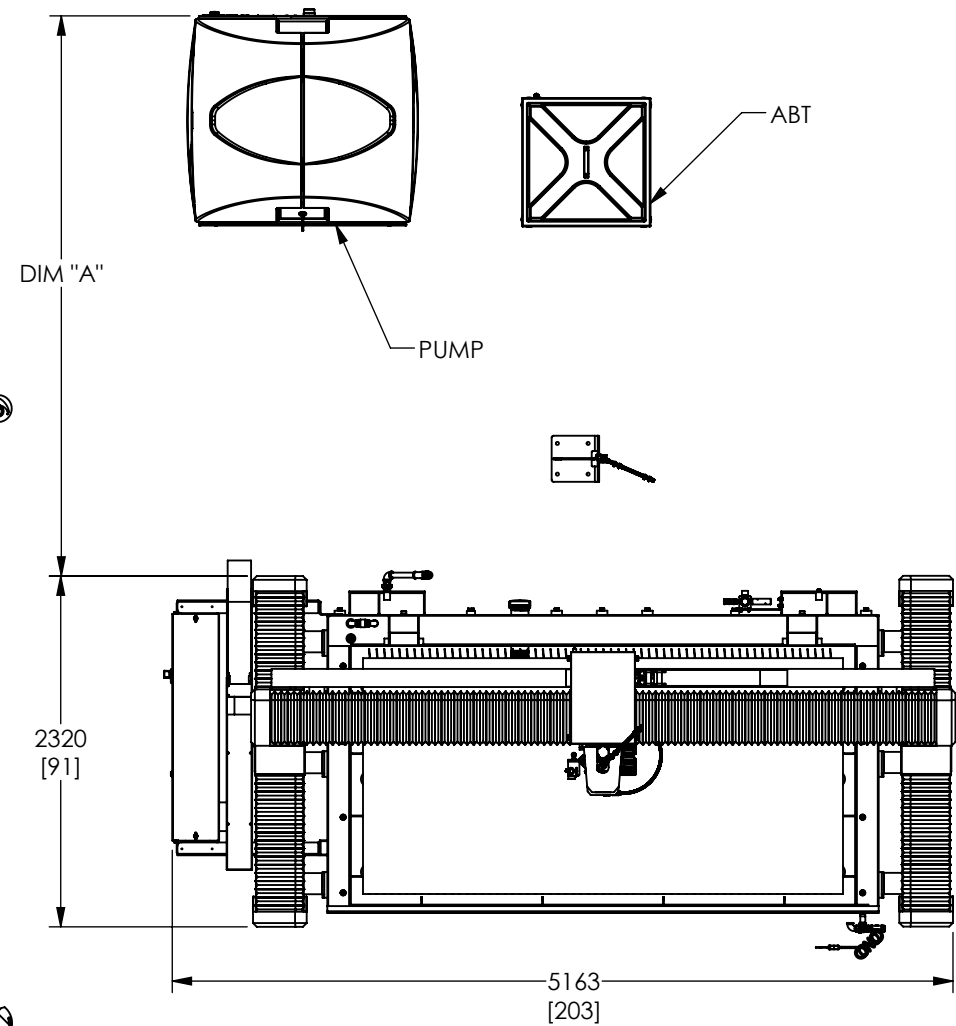
- [101] RECOMMENDED CLEARANCE FOR MACHINE ACCESS AND MAINTENANCE IS 1000 MM (39"). ACTUAL DISTANCE TO BE DETERMINED BY LOCAL CODES/REGULATIONS.
- [102] SEE PUMP PRE-INSTALL DRAWING FOR SIZE AND REQUIREMENTS
- [103] UTILITIES DROPS FOR AIR, WATER, AND POWER LOCATION ARE APPROXIMATED. DROPS MUST NOT INTERFERE WITH LIGHT CURTAIN SIGNAL (IF EQUIPPED).
- [104] LOCATION SHOWN FOR REFERENCE. ABT CAN BE LOCATED WITHIN CABLE AND HOSE LIMITS. EXTENSION KITS ARE AVAILABLE FOR ALTERNATE LOCATIONS IF REQUIRED. SEE ABT PRE-INSTALL DRAWING FOR SIZE AND REQUIREMENTS.
- [105] INSTALLATION TYPICAL OUTSIDE LIGHT CURTAIN BOUNDARY, FINAL LOCATION TO BE DETERMINED AT TIME OF INSTALL.
- [106] RECOMMENDED CLEARANCE FOR ACCESS AND SAFETY AROUND THE ABT (ABRASIVE BULK TRANSFER) UNIT IS 1000 MM (39").
- [107] UTILITY DROP FOR MACHINE POWER. REQUIRED ONLY WHEN USING A CUSTOMER-SUPPLIED HIGH-PRESSURE PUMP.

LEGEND

- MACHINE HOME
- ⊕ UTILITY DROP

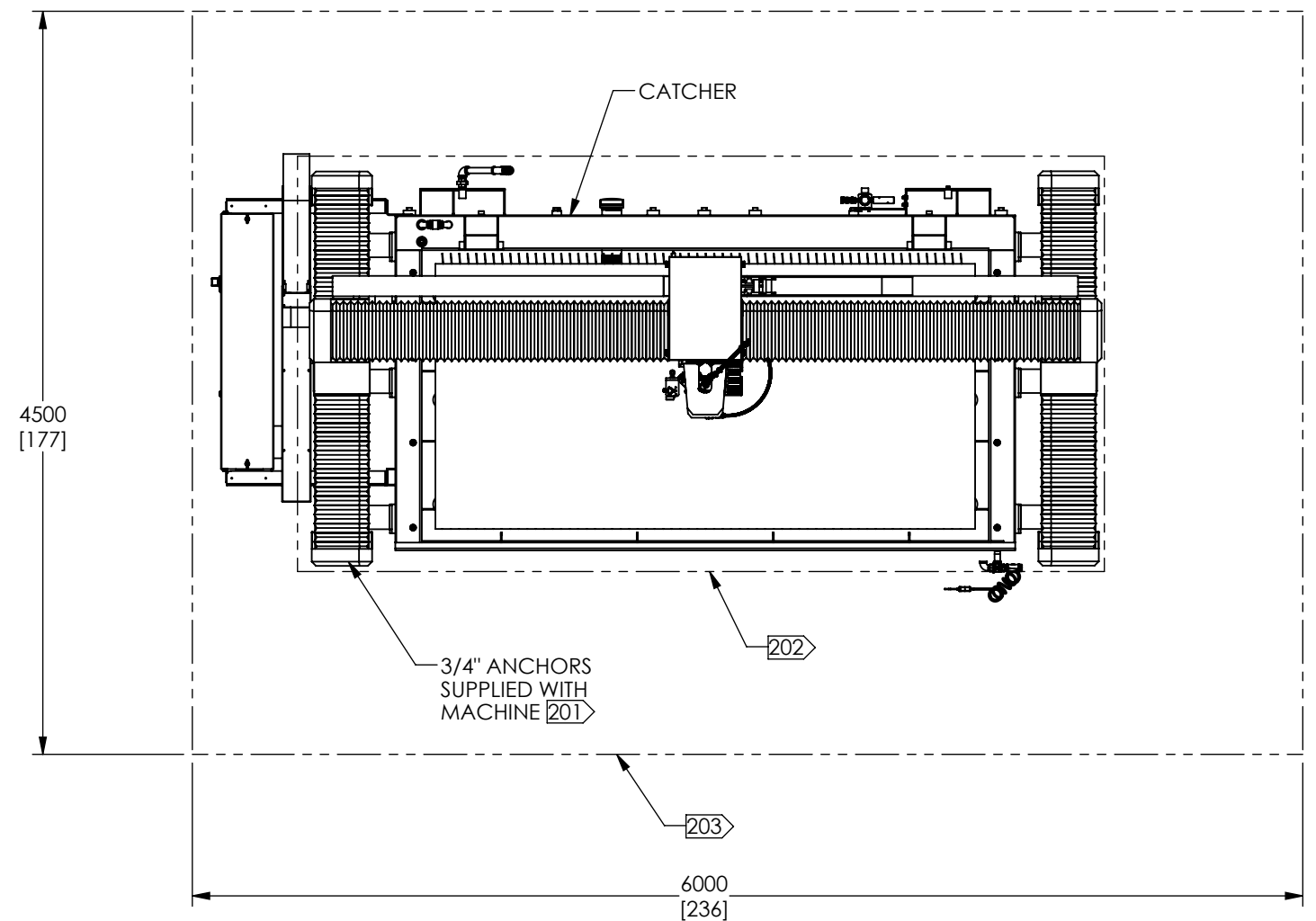
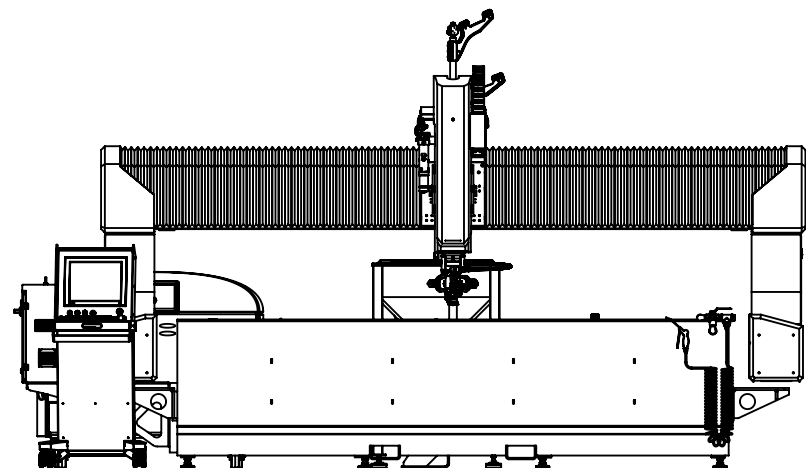
DIMENSIONS ARE IN MILLIMETERS,  
DIMENSIONS IN BRACKETS  
ARE IN INCHES.

THIRD ANGLE PROJECTION		THIS DRAWING IS THE PROPERTY OF FLOW INTERNATIONAL CORPORATION AND IS NOT TO BE COPIED OR REPRODUCED WITHOUT THE WRITTEN CONSENT OF FLOW INTERNATIONAL CORPORATION.		
MATERIAL				
DRAWN BY J.OROVA	STARTED 3/4/2017	ENG J.HOPKINS	EST WEIGHT N/A	MODELED IN SOLIDWORKS
TITLE <b>PRE-INSTALL;M300;3015</b>				
REVISION C	SCALE 1:50	BASE PART NUMBER	<b>059989</b>	1 OF 3



LIGHT CURTAIN RESET FOOT SWITCH

ROLL AROUND CONSOLE



NOTES:

- [201] LOCATION OF ANCHORS TO BE DETERMINED ONCE MACHINE HAS BEEN SET AND LEVELED
- [202] SEE PRE-INSTALLATION GUIDE FOR FOUNDATION REQUIREMENTS.
- [203] WHEN INCORPORATED, LIGHT CURTAIN BOUNDARY DIMENSIONS ARE TAKEN FROM CUTTING ENVELOPE. MINIMUM DISTANCE IS 1500 MM (59").

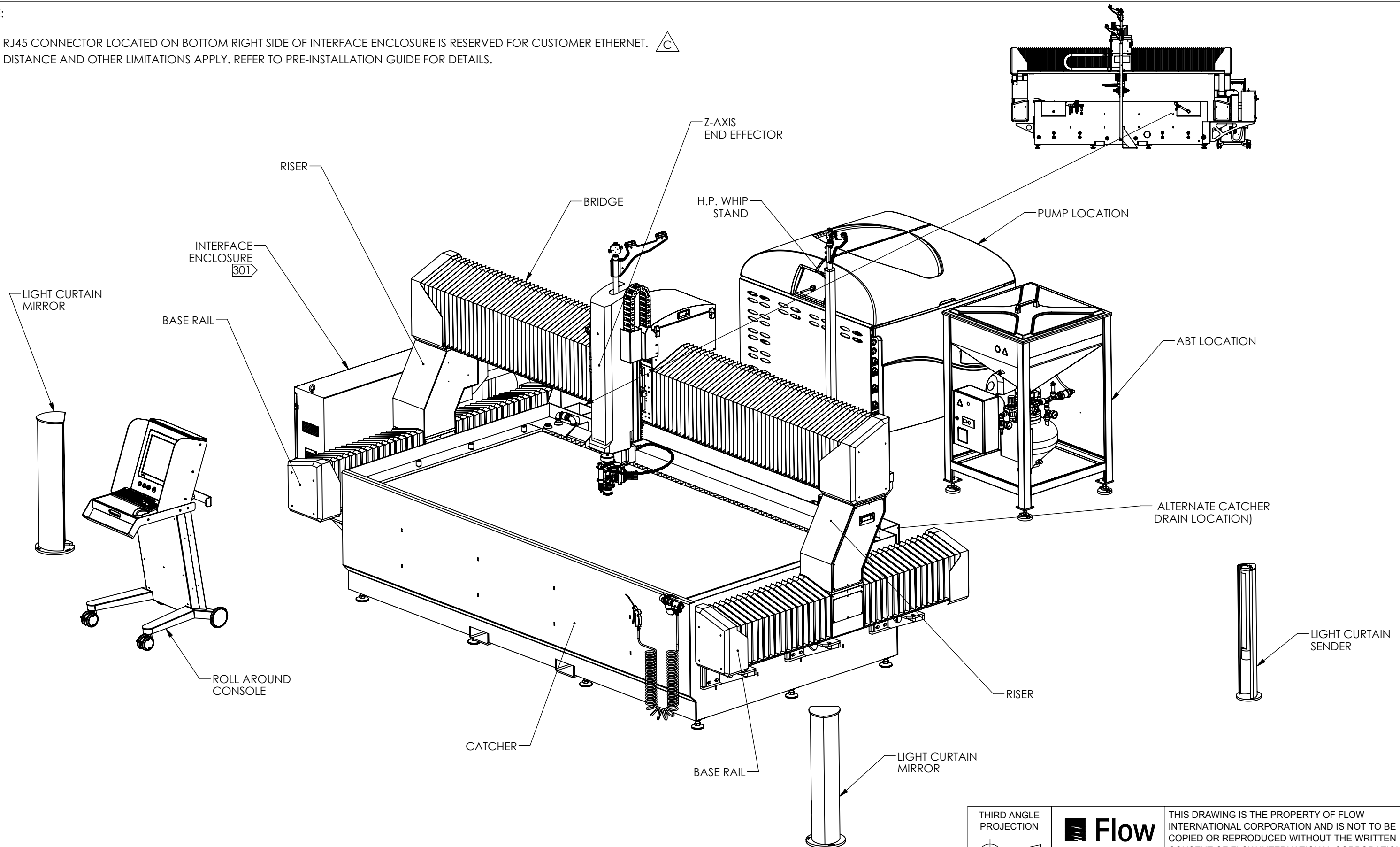
DIM "A"	
WITH LIGHT CURTAIN	3800 [150]
WITHOUT LIGHT CURTAIN	2600 [102]

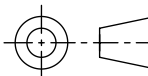

UNCONTROLLED COPY. USER IS RESPONSIBLE FOR VERIFYING THE CURRENT REVISION LEVEL.

THIRD ANGLE PROJECTION			THIS DRAWING IS THE PROPERTY OF FLOW INTERNATIONAL CORPORATION AND IS NOT TO BE COPIED OR REPRODUCED WITHOUT THE WRITTEN CONSENT OF FLOW INTERNATIONAL CORPORATION.		
	MATERIAL				
DRAWN BY J.OROVA	STARTED 3/4/2017	ENG J.HOPKINS	EST WEIGHT N/A	MODELED IN SOLIDWORKS	
TITLE <b>PRE-INSTALL;M300;3015</b>					
REVISION C	SCALE 1:50	BASE PART NUMBER	<b>059989</b>		2 OF 3

NOTE:

301 RJ45 CONNECTOR LOCATED ON BOTTOM RIGHT SIDE OF INTERFACE ENCLOSURE IS RESERVED FOR CUSTOMER ETHERNET.  DISTANCE AND OTHER LIMITATIONS APPLY. REFER TO PRE-INSTALLATION GUIDE FOR DETAILS.



THIRD ANGLE PROJECTION 				THIS DRAWING IS THE PROPERTY OF FLOW INTERNATIONAL CORPORATION AND IS NOT TO BE COPIED OR REPRODUCED WITHOUT THE WRITTEN CONSENT OF FLOW INTERNATIONAL CORPORATION.		
DRAWN BY J.OROVA		STARTED 3/4/2017	ENG J.HOPKINS	EST WEIGHT N/A	MODELED IN SOLIDWORKS	
TITLE PRE-INSTALL;M300;3015						
REVISION C	SCALE 1:25	BASE PART NUMBER	059989		3 OF 3	