



## H2O Jet Field Service, Training and Preventive Maintenance

H2O Jet highly trained service technicians provides training, technical service , intensifier rebuild and preventive maintenance services to maintain your Flow style equipment in top operating condition

### H2O Jet Training

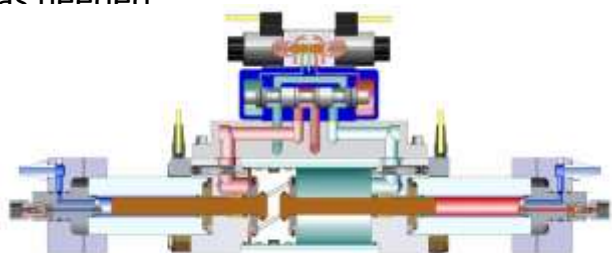
- 1-day on-site training course to help users of Flow style equipment reduce down time, become more self-reliant, lower operating and repair costs and improve reliability of repairs

### H2O Jet Technical Service

- On-site service from factory trained service technicians is available for trouble shooting, repairs or help with upgrades to keep your intensifier running and making parts

### H2O Jet Intensifier rebuild service

- H2O Jet can rebuild your intensifier on-site or at our service center with high quality parts with a factory trained service technician
- Service includes dis-assembly, clean-up, replace parts and assembly and testing before shipping
- Provide a written analysis of what is wrong and what we did
- Replace HP Seals, LP seals and check valve repair kit for a standard rebuild and replace other parts as needed



# H2O Jet Preventive Maintenance Program (PMP)

- H2O Jet offers a 36 point comprehensive inspection for your Flow style pump, parts and components
- Benefits of the PMP program ; improves operational efficiency and dependability, minimize maintenance costs, reduces unplanned downtime, improves part life and reduce downtime and enables end users to focus resources on core business

## Intensifier

1. HP cylinders
2. Seal heads
3. HP seals
4. Liners
5. Plungers
6. Hydraulic head/cylinder
7. Mechanical/electrical switch
8. Piston assembly
9. O-rings
10. Check valves

## Motor/Pump

11. Bearing grease
12. Vibration
13. Voltage check
14. Cable inspection

## Hydraulic

15. Piston pump
16. Recirculation pump
17. Compensators
18. Bleeddown valve
19. Pressure gauges
20. Hose and fittings



## High Pressure System

21. HP bent tubes
22. Attenuator
23. Valves
24. HP fittings

## Low Pressure System

25. Water filters
26. Booster pump
27. Pressure switches
28. Pressure gauges

## Cooling

29. Heat exchanger
30. Temperature gauges
31. Hoses

## Cutting Heads

33. Actuator
33. on/off valve
34. Cutting head/orifices
35. Abrasive nozzle
36. HP tubing/fittings

For quotation or scheduling service in Michigan for training, field technical service , preventive maintenance or rebuilds contact:

Joel Hays - AHB Tooling and Machinery at:

Phone-800-991-4225

[joel.hays@ahbinc.com](mailto:joel.hays@ahbinc.com)

**AHB** Tooling & Machinery, Inc.  
Complete Metalworking Solutions  
Roseville Saginaw & Jackson, MI

ISO Certified  
(800) 991-4225  
[www.ahbinc.com](http://www.ahbinc.com)  
[customerservice@ahbinc.com](mailto:customerservice@ahbinc.com)

**H2O JET**