

**PARTS MANUAL FOR  
PEMSERTER® SERIES 2000®  
MODEL 20010/20110  
FASTENER INSTALLATION  
PRESS**

**PennEngineering®**



North America: Danboro, PA 18916 USA • E-mail: [info@pemnet.com](mailto:info@pemnet.com) • Tel: +1-215-766-8853 • Fax: +1-215-766-0143 • 800-237-4736 (USA Only)

U.K. And Europe: Doncaster, England • E-mail: [uk@pemnet.com](mailto:uk@pemnet.com) Tel: +44 (0)1302 765700 • Fax: +44 (0)1302 367580

Asia/Pacific: Singapore • E-mail: [singapore@pemnet.com](mailto:singapore@pemnet.com) • Tel: +65-6-745-0660 • Fax: +65-6-745-2400

Shanghai, China • E-mail: [china@pemnet.com](mailto:china@pemnet.com) • Tel: +86-21-5868-3688 • Fax: +86-21-5868-3988

Visit our PEMNET™ Resource Center at [www.pemnet.com](http://www.pemnet.com)

**PARTS MANUAL FOR**  
**PEMSERTER<sup>®</sup> SERIES 2000<sup>®</sup> PRESS**  
**MODEL 20010 / 20110**  
**Serial No. 20010A-1765 & Up**  
**FASTENER INSTALLATION PRESS**

**PennEngineering<sup>®</sup>**  
5190 OLD EASTON ROAD  
DANBORO, PENNSYLVANIA 18916  
1-800-523-5321 • 1-215-766-3801

Document Part Number 8022413  
Revision C  
13-Sep-2018

# SERIES 20010 / 20110 PARTS MANUAL

## TABLE OF CONTENTS

	PAGE
<b>SECTION 1 - MAIN PRESS ASSEMBLY</b> .....	1
1.0 GENERAL IDENTIFICATION DRAWING	
<b>SECTION 2 - HYDRAULIC/PNEUMATIC ENCLOSURE</b> .....	3
2.0 HYDRAULIC/PNEUMATIC ENCLOSURE	
2.1 AIR/OIL TANK ASSEMBLY	
2.2 RAM VALVE REGULATOR ASSEMBLY	
<b>SECTION 3 - ELECTRICAL ENCLOSURE</b> .....	8
3.0 ELECTRICAL OMRON PANEL ASSEMBLY	
<b>SECTION 4 - MAIN CYLINDER ENCLOSURE</b> .....	11
4.0 MAIN CYLINDER ENCLOSURE	
4.1 DISTRIBUTION BOX ASSEMBLY	
4.2 SAFETY HOUSING ASSEMBLY	
4.3 LIGHTSTREAM COLLAR ASSEMBLY	
<b>SECTION 5 - PRESS THROAT AREA</b> .....	17
5.0 PRESS THROAT AREA	
5.1 SLIDE & GRIPPER ASSEMBLY	
5.2 ANVIL HOLDER ASSEMBLY	
<b>SECTION 6 - OPERATOR CONTROLS</b> .....	22
6.0 GENERAL IDENTIFICATION DRAWING	
<b>SECTION 7 - FEEDER BOWL AREA</b> .....	24
7.0 FEEDER BOWL AREA	
7.1 SHUTTLE SUPPORT ASSEMBLY	
<b>SECTION 8 - TOOLING VALVE/STORAGE ENCLOSURE</b> .....	28
8.1 8-STATION VALVE MANIFOLD	
8.2 PRESSURE RESERVOIR ASSEMBLY	
<b>SECTION 9 - FOOTSWITCH ASSEMBLY</b> .....	31
9.0 FOOTSWITCH ASSEMBLY	
<b>SECTION 10 - FILTER/REGULATOR ASSEMBLY</b> .....	33
10.0 FILTER/REGULATOR ASSEMBLY	
<b>SECTION 11 - GENERAL SPARE PARTS &amp; PRESS ACCESSORIES</b> .....	35

# **SECTION 1**

## **MAIN PRESS ASSEMBLY**

SERIES 2000 PARTS MANUAL - MAIN PRESS ASSEMBLY  
 PEMSERTER PART NO. 80020010 / 80020110

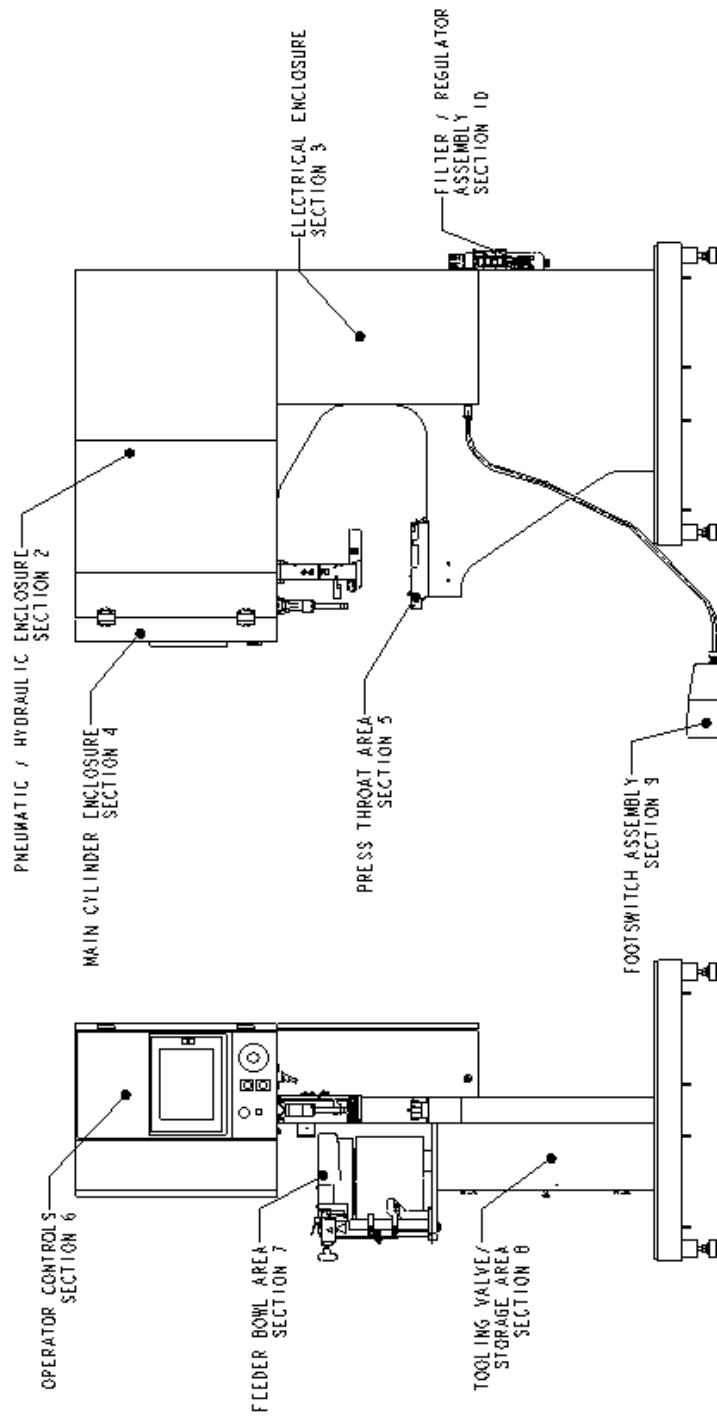
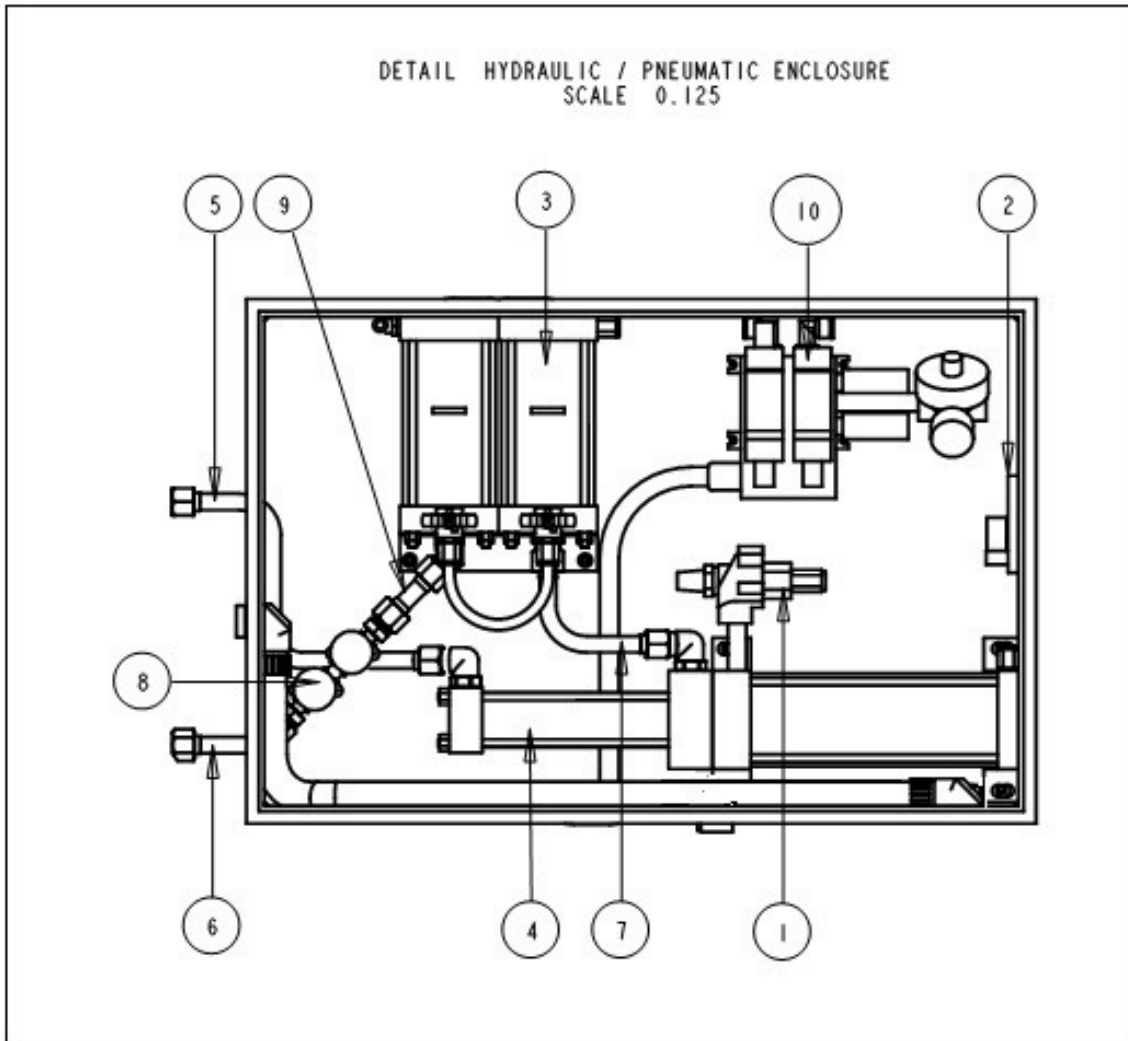


FIGURE 1.0

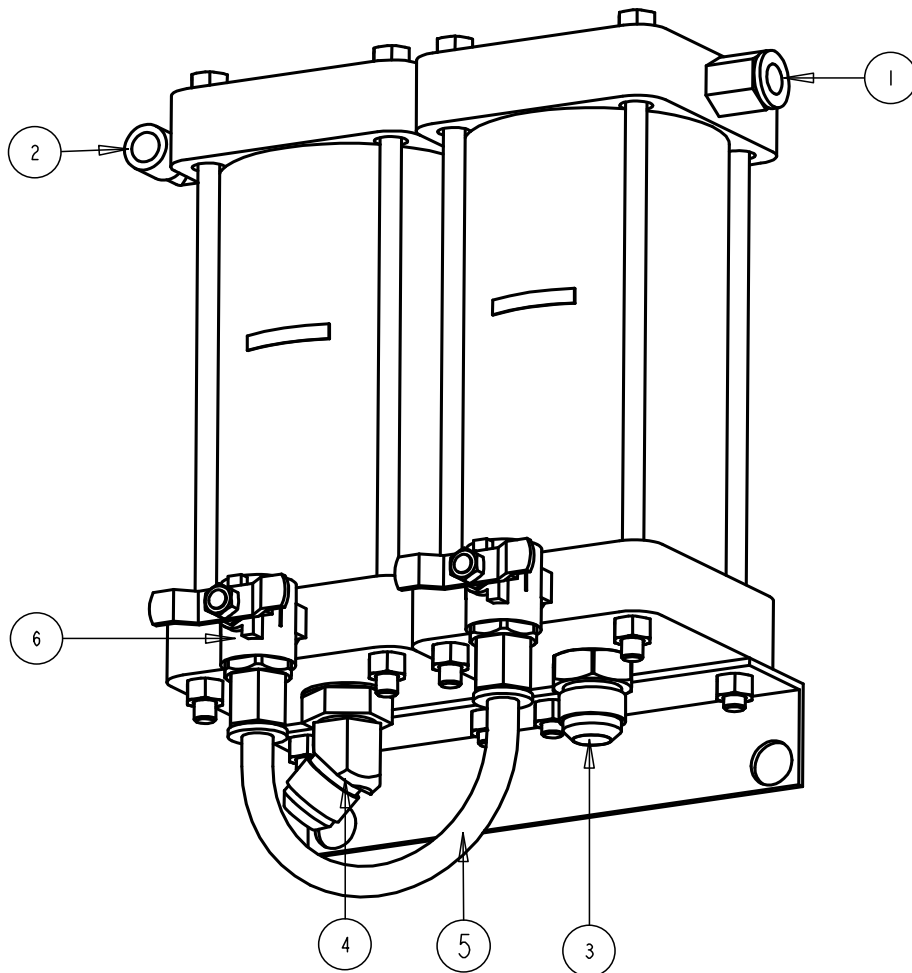
## **SECTION 2**

# **HYDRAULIC/PNEUMATIC ENCLOSURE**



10	8004668	RAM VALVE ASSEMBLY W/ PILOT REGULATOR	1
9	8004626	PIPE ASSEMBLY, SAFETY/TANKS	1
8	8004636T	SAFETY VALVE ASSEMBLY	1
7	8004507	PIPE ASSEMBLY, TANKS/BOOSTER	1
6	8004506	PIPE ASSEMBLY, SAFETY/CYLINDER	1
5	8004498	PIPE ASSEMBLY, BOOSTER/CYLINDER	1
4	8004470	BOOSTER (Miller)	1
3	8004369	AIR OIL TANKS, 4IN DIA X 7.5 IN TALL	1
2	8018522	ELECTRONIC AIR PRESSURE REGULATOR	1
1	8001573	EXHAUST VALVE KIT	1
ITEM	PART NUMBER	DESCRIPTION	QTY

**FIGURE 2.0**



6	8005478	BALL VALVE, 90 DEGREE FLOW, 1/2 NPT, MALE - FEMALE	2
5	8000766	TUBING, 1/2 IN. OD.	1
4	8000297	FITTING, 45 DEG, SAE-12 TO 3/4, 37 DEG FLARE TUBING	1
3	8000226	STRAIGHT SAE-12 TO 3/4 IN. 37 DEG. FLARE TUBING	1
2	8000225	FITTING, ELBOW, 1/2 NPT TO 1/2 TUBE	1
1	8000224	FITTING, STRAIGHT, 1/2 MALE NPT TO 1/2 TUBE	3
ITEM	PART NUMBER	DESCRIPTION	QTY

**FIGURE 2.1**



SERIES 2000 - RAM VALVE ASSEMBLY  
PEM PART NO. 8004668

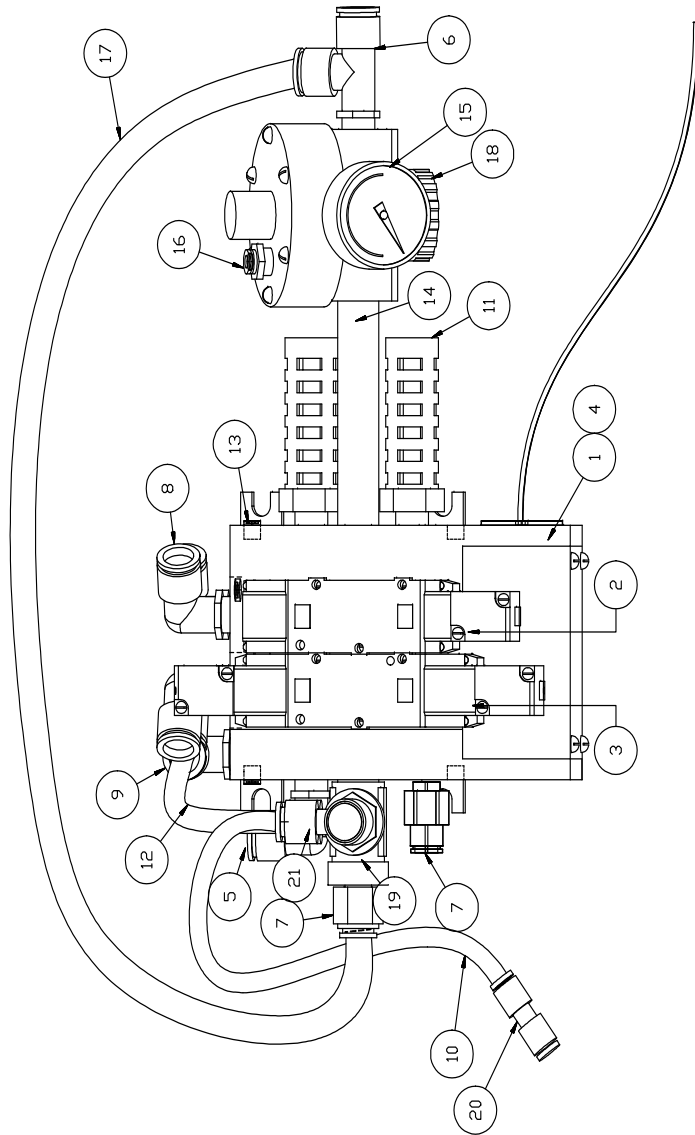


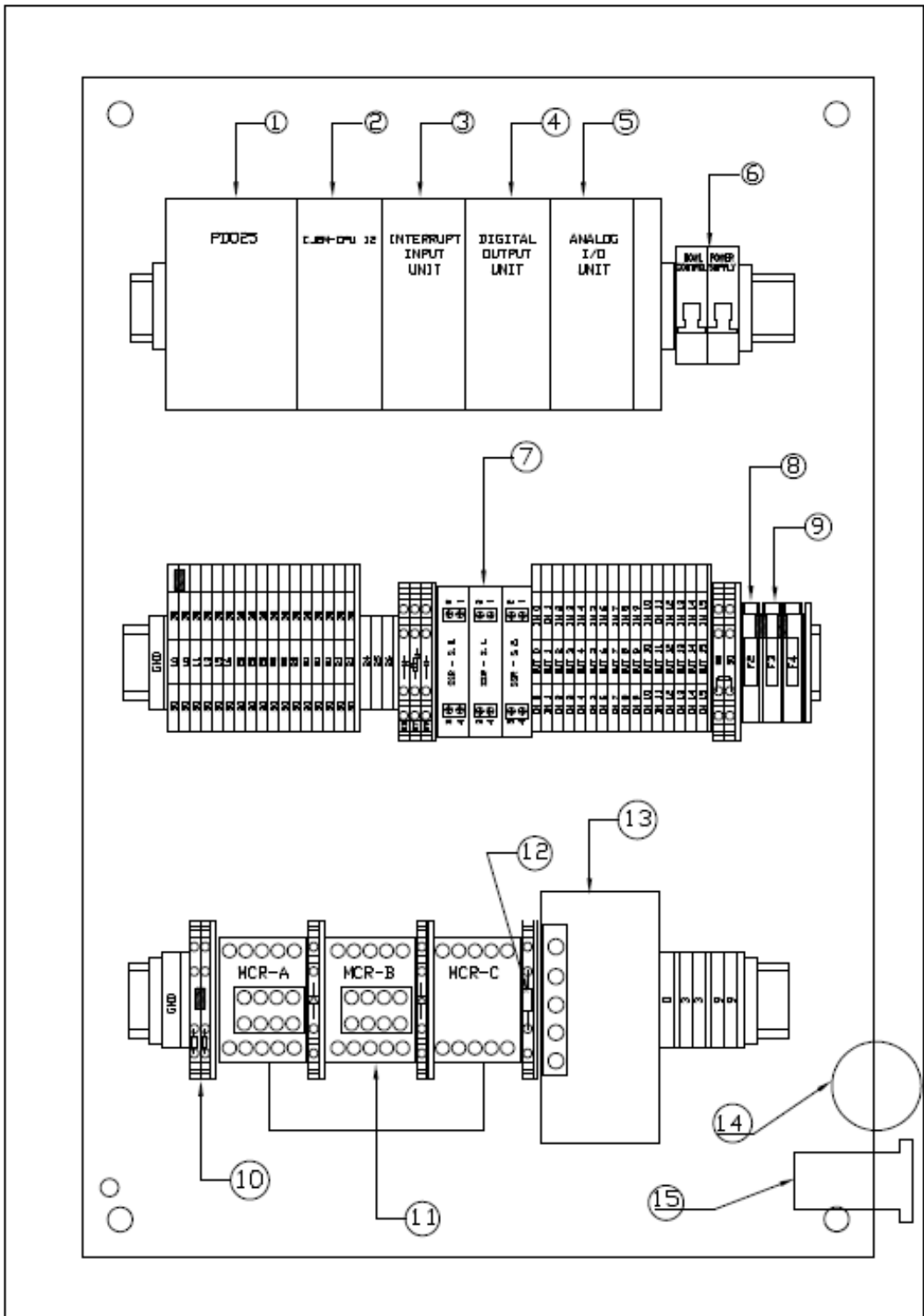
FIGURE 2.2

BILL OF MATERIAL			
ITEM	PART NO	DESCRIPTION	QTY
1	8001395	ASSY VALVE MANIFOLD 2 STATION	1
2	8002228	VALVE BOOSTER(AFTER SER # 071)	1
3	8002229	VALVE MAIN CYL(AFTER SER # 071	1
4	8004142	DISC BLOCKING – RAM VALVE ASSY	3
5	8004085	ELBOW 1/2 NPT X 1/2 DIA TUBE	1
6	8004086	TEE MALE RUN 1/2 TUBE X1/2 NPT	1
7	8019699	(FS)FITTING ½ TUBE ½ NPT(SMC)	2
8	8004088	ELBOW 3/8NPT X 1/2 DIA TUBE	4
9	8021200	ELBOW 5/16 X 1/8 R	1
10	8004090	TUBING POLY 5/16 DIA	28"
11	8001624	MUFFLER, SILENCER 1/2"NPT	2
12	8004090	TUBING POLY 5/16 DIA	8"
13	9800391692	PLUG PIPE 1/8 NPT	2
14	9800391987	NIPPLE 1/2 NPT x 4-1/2 LG	1
15	8004069	GAUGE 4M X 1/4 NPT	1
16	8019660	ST THD 4 TUBE × 1/4 R	1
17	8000253	TUBING POLY ½ IN OD, BLACK	24"
18	8003190	REGULATOR AIR PRESSURE 2005	1
19	8003232	TEE STREET 1/2 NPT	1
20	8005605	STRAIGHT TUBE 1/4 X 5/16	1
21	8005606	BANJO 5/16 TUBE X 1/2 NPT	1

**FIGURE 2.2 (Ram Valve Assembly-8004668 BOM)**

# **SECTION 3**

## **ELECTRICAL ENCLOSURE**



**FIGURE 3.0  
ELECTRICAL ENCLOSURE**

<b>BILL OF MATERIAL</b>			
ITEM	PART NO.	DESCRIPTION	QTY.
16	8001536	POWER FILTER ( <i>NOT SHOWN</i> )	1
15	8022049	POWER ENTRY MODULES METRIC	1
14	8021240	CAMS/SAFETY SWITCHES	1
13	8013935	DC POWER SUPPLY	1
12	8003052	CAPACITOR	1
11	8005201	MAIN CONTROL RELAY	3
10	8008716	RESISTOR, LASER	1
9	8004140	BUSS FUSE AGC 2	2
8	8004079	BUSS FUSE AGC ¾	1
7	8001159	SOLID STATE RELAY	3
6	8021239	DISCONNECT SWITCH	2
5	8011346	ANALOG INPUT CARD	1
4	8011345	OUTPUT CARD	1
3	8011344	PLC INTERRUPT INPUT UNIT	1
2	8011349 8017455	CPU – CJ1M CPU 12 (*See note below) CPU – CJ2M CPU 12 (*See note below)	1
1	8011319	POWER SUPPLY	1
ITEM	PART NO.	DESCRIPTION	QTY.

**FIGURE 3.0 (Electrical Enclosure BOM)**

**NOTE: Replacement battery for CPU (P/N 8006338)**

Sales/Service must verify which battery the customer has to order the replacement, per instructions A-8011017.

***For Models 2001/11 thru 2007/17 & some 2008/18***

P/N 8002343      Omron# 3G2A9-BAT08

***For Models 2008/18 & 2007/17 presses with QX™ Turret Tool Installed***

P/N 8011027      Omron# CPM2ABAT01

***For Models 2009/19 & 2010/110***

P/N 8011576      Omron# CJ1W-BAT01

**Optional Flash Memory Card (64MB) for CPU (P/N 8011349)**

P/N 8011348      Omron# HMC-EF7672

**PLC (CJ1M) Programming Cable**

P/N 8011574      Omron# CJ1W-CN226

**CPU CHANGE**

\*P/N 8011349 Omron CPU CJ1M is obsolete – installed on 2009/19 press serial numbers:  
1093-1498, 1500, 1502, 1504, 1505 & 1506

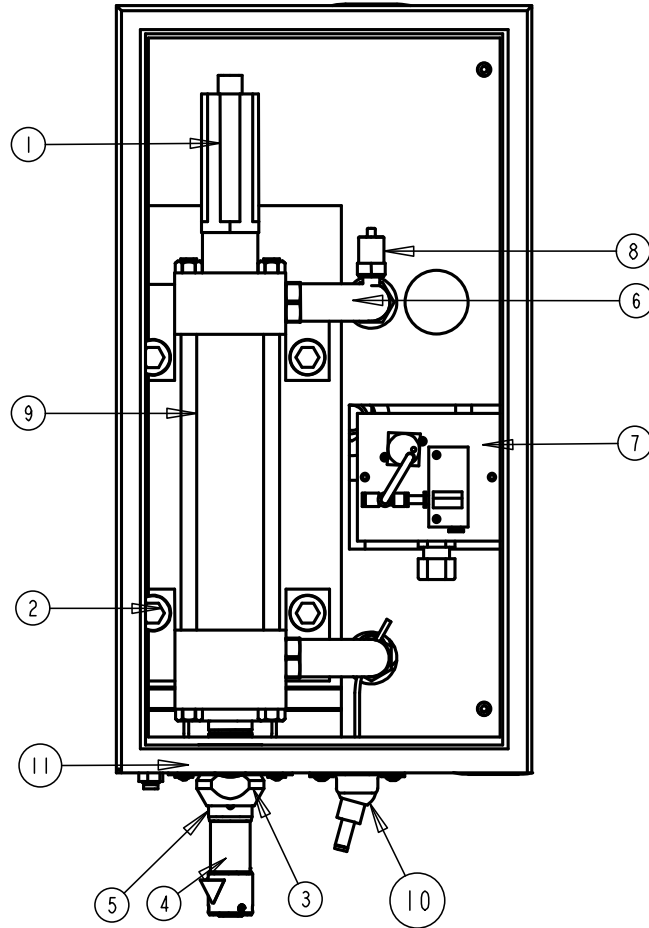
\*P/N 8017455 Omron CPU CJ2M replaces 8011349 – installed on 2009/19 press serial numbers:  
1499, 1501, 1503, 1507 & UP

If customer has CPU CJ1M and needs replacement, PLC & touchscreen programs must be updated for use with CPU CJ2M.

# **SECTION 4**

## **MAIN CYLINDER ENCLOSURE**

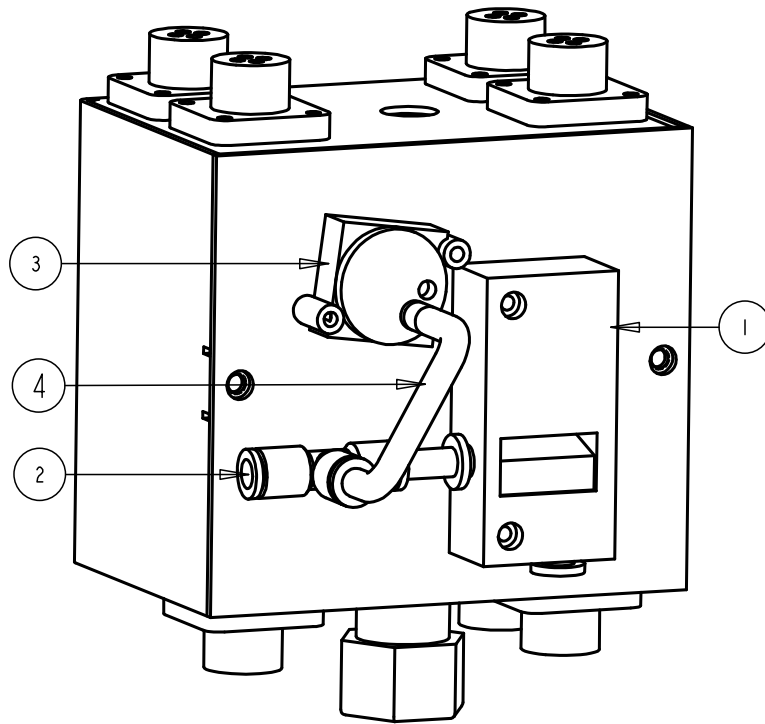
DETAIL MAIN CYLINDER ENCLOSURE  
SCALE 0.200



11	8009728 8009715	SAFETY SENSOR REPLACEMENT KIT SAFETY SENSOR ASSEMBLY	1 2
10	8005820	LASER SPOTTING LIGHT	1
9	8005946	CYLINDER, MAIN	1
8	8019627	PRESSURE SENSOR	1
7	8021279	DISTRIBUTION BOX ASSEMBLY	1
6	8004499	LONG ELBOW, 1-1/16 STRAIGHT THREAD	1
5	8004213	ROD END, DETACHABLE	1
4	8003510 8019729	SAFETY HOUSING ASSEMBLY SAFETY ASSY V4 BALL BUSHING	1
3	8003248	LIGHTSTREAM COLLAR ASSEMBLY	1
2	8002480	SHCS 3/4-10 UNC-2A X 2-1/4 LG	4
1	8024723	AMT Linear Position Sensor	1
<b>ITEM</b>	<b>PART NUMBER</b>	<b>DESCRIPTION</b>	<b>QTY</b>

**FIGURE 4.0**

SERIES 2000 PUNCH VACUUM SYSTEM

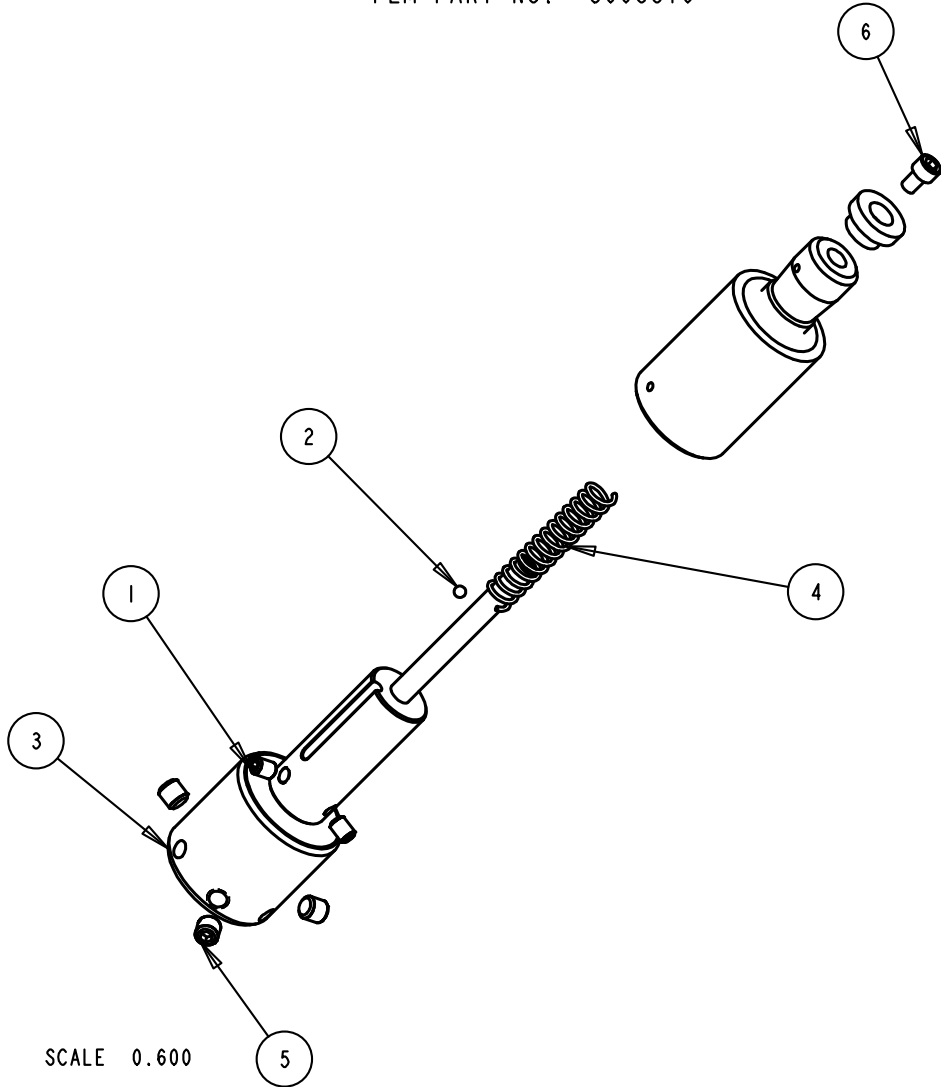


4	8000310	TUBING, 1/4" O.D. (QTY FT)	1.3
3	9800391619	VACUUM SWITCH 10 HG ADJUSTABLE	1
2	8002165	TEE, UNION, 1/4 TUBING	1
1	8001400	VACUUM ASPIRATOR, 1/4 TUBE X 1/4 TUBE	1
ITEM	PART NUMBER	DESCRIPTION	QTY

**FIGURE 4.1**



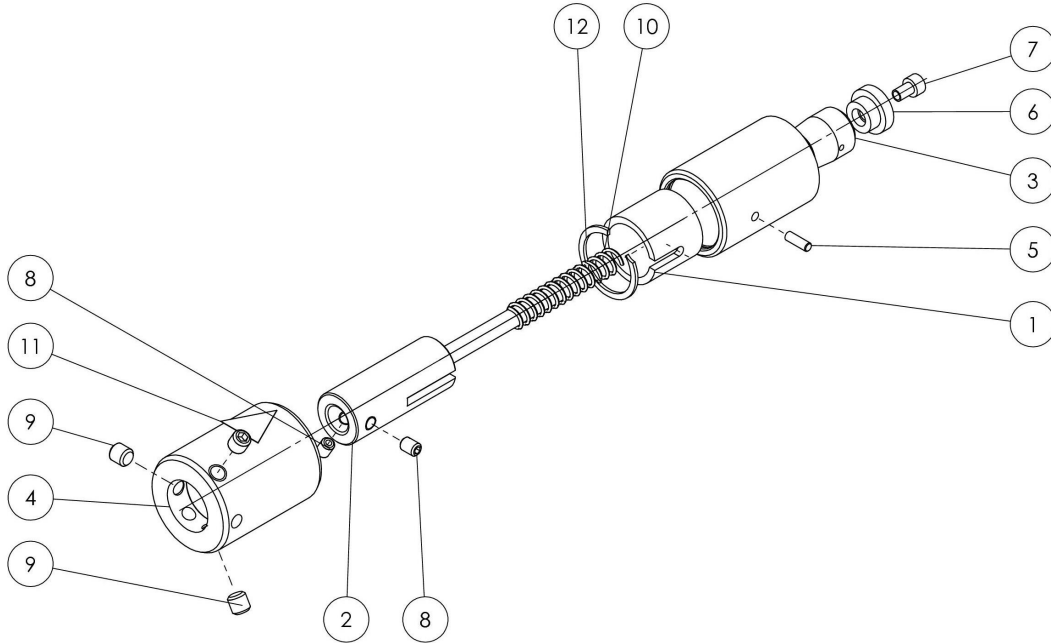
FIGURE 4.2  
 SERIES 2000 - SAFETY HOUSING ASSEMBLY VER. 3  
 PEM PART NO. 8003510



BILL OF MATERIAL			
ITEM	PART NUMBER	DESCRIPTION	QTY
1	8002083	SSS #10-32 X 1/4", KNURLED CUP POINT	2
2	8002100	BALL BEARING, 1/8" DIA.	1
3	8003509	SAFETY AREA EXPANDING COLLAR	1
4	8003552	SPRING, SAFETY HOUSING VER. 3	1
5	980039430	SSS 1/4-20 X 1/4	3
6	980039744	SHCS #8-32 X 1/4 LG	1

**Note: 8003510 was used up to S/N 1795 & Replaced by P/N 8019729**

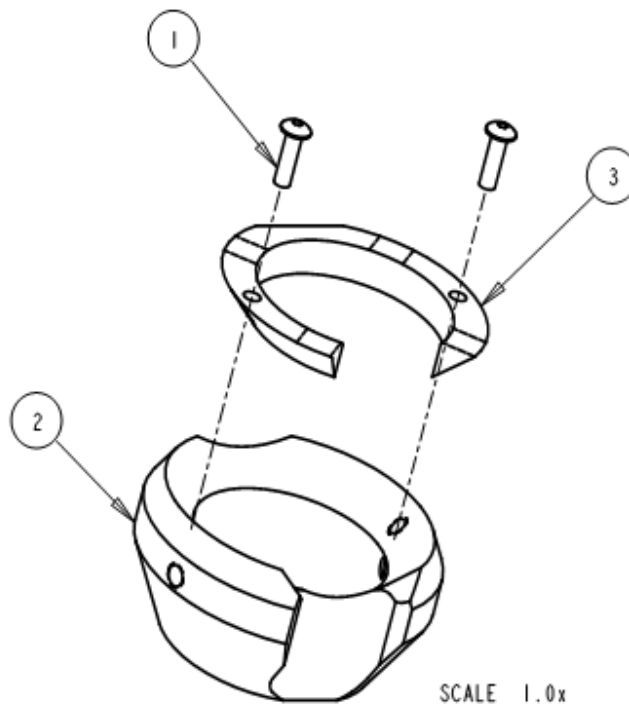
FIGURE 4.2B  
 SERIES 2000-SAFETY ASSY V4 BALL BUSHING  
 PEM PART NO. 8019729



12	8019596	RETAIN RING 1.058 OD X .045THK	1
11	8008512	LABEL PINCH POINT "D" SIZE(FS)	1
10	8003552	SPRING SAFETY HOUSING	1
9	980039430	SSS 1/4-20 x 1/4LG	3
8	980039077	SSS #10-32 x 1/4LG	2
7	980039744	SHCS #8-32 x 1/4 LG	1
6	8000372	BUTTON RAM SAFETY	1
5	8019594	DOWEL PIN 1/8 X 3/8	1
4	8019592	SAFETY COLLAR FOR BALL BUSHING	1
3	8019105	SAFETY HOUSING VER. 4	1
2	8019591	RAM SAFETY ADAPTER VER.4	1
1	8019590	BALL BUSHING SAFETY HOUSING V4	1
<b>ITEM</b>	<b>PART NUMBER</b>	<b>DESCRIPTION</b>	<b>QTY</b>

**SAFETY ASSEMBLY VER.4 BALL BUSHING P/N 8019729-PRESS S/N 1796&UP**

FIGURE 4.3  
 SERIES 2000 LIGHTSTREAM COLLAR ASSEMBLY  
 PEM PART NO. 8003248

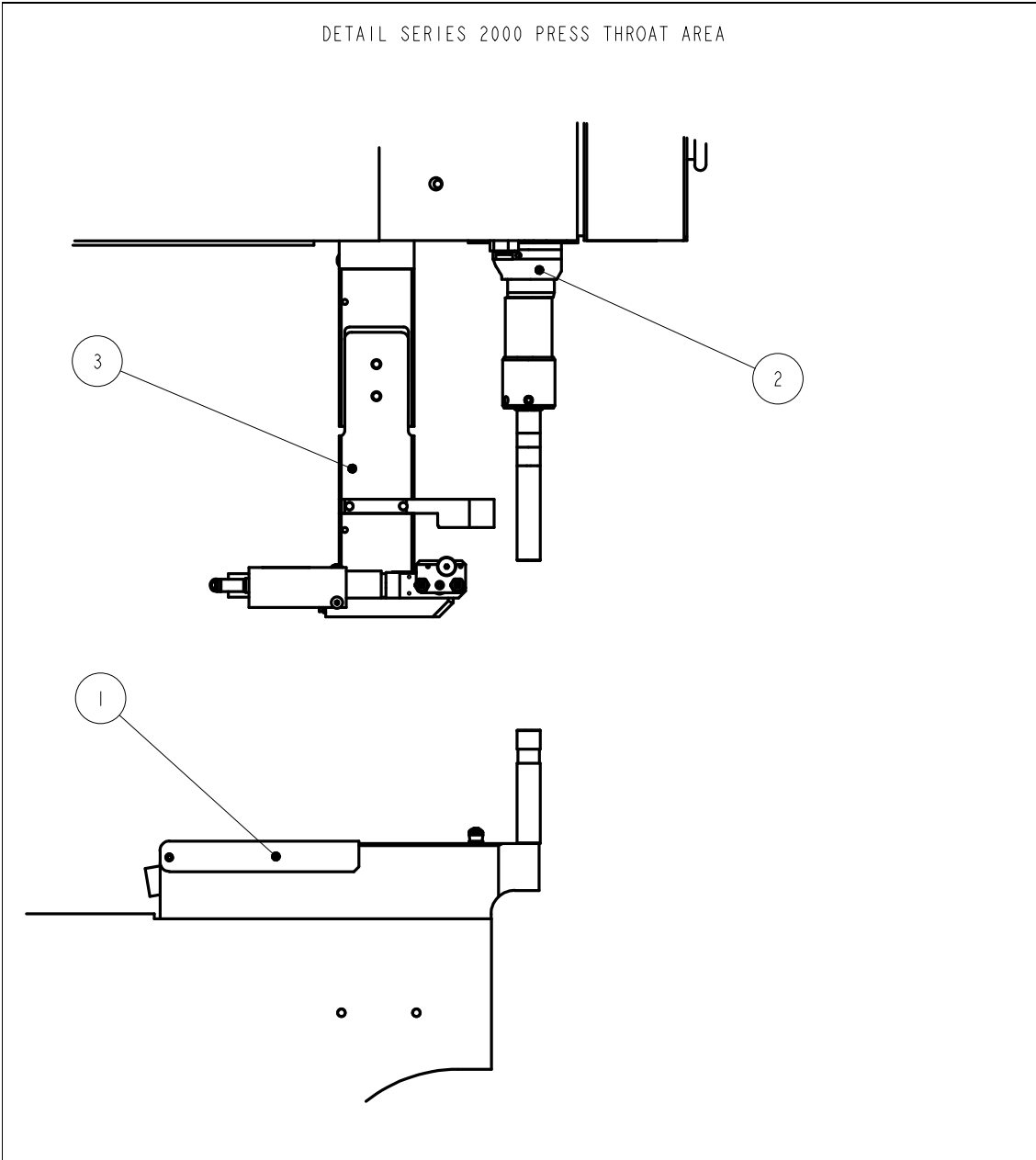


BILL OF MATERIAL			
ITEM	PART NUMBER	DESCRIPTION	QTY
1	8023514	BHCS #4-40 X 3/8 LG-NYLON	2
2	8003023	LIGHTSTREAM COLLAR	1
3	8003251	REFLECTIVE COLLAR COVER	1

# **SECTION 5**

## **PRESS THROAT AREA**

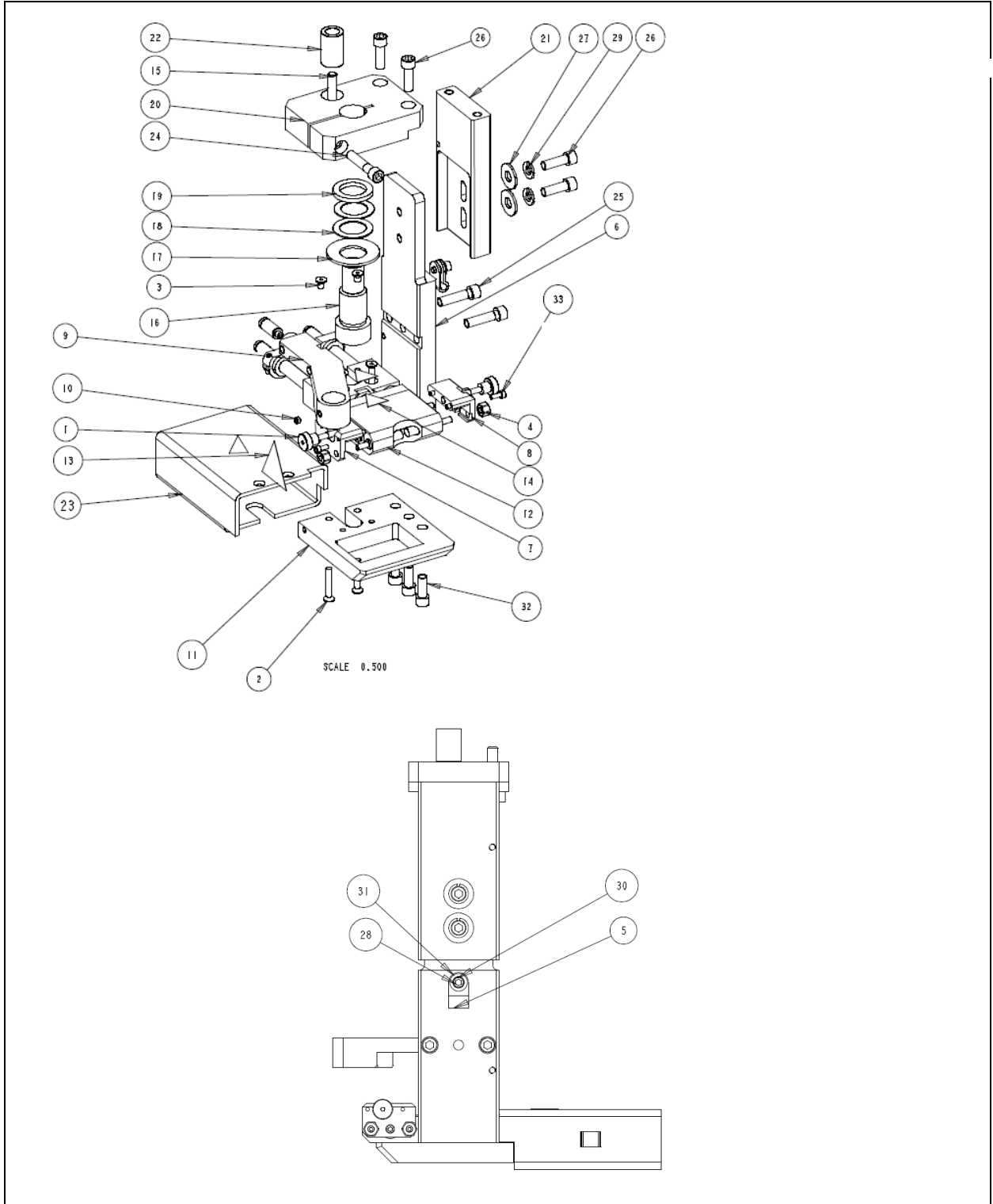
DETAIL SERIES 2000 PRESS THROAT AREA



3	8010944	TF HANGER ASSEMBLY	1
2	8003248	LIGHTSTREAM COLLAR ASSEMBLY	1
1	8000672	ANVIL HOLDER ASSEMBLY	1
<b>ITEM</b>	<b>PART NUMBER</b>	<b>DESCRIPTION</b>	<b>QTY</b>

**FIGURE 5.0**

**SERIES 2000® TF HANGER ASSEMBLY  
PART NUMBER 8010944**



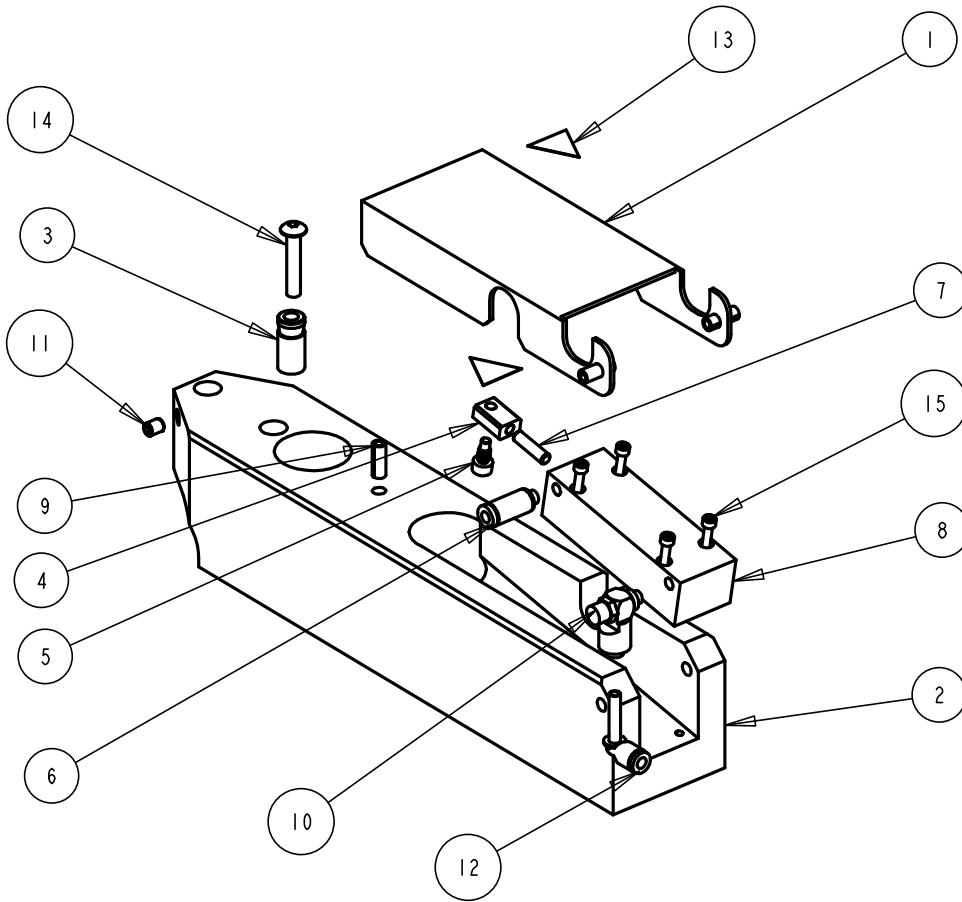
**FIGURE 5.1**

**SERIES 2000® TF HANGER ASSEMBLY BILL OF MATERIALS  
PART NUMBER 8010944**

33	9800392094	SHCS M3 X 8MM STN STL	2
32	9800391262	SHCS 1/4-20 X 5/8" LG	3
31	980039837	WASHER, FLAT PLATED, #8	1
30	980039804	WASHER, LOCK PLATED, #8	1
29	980039476	WASHER, LOCK PLATED, 1/4	2
28	980039380	SHCS #8-32 X 3/8 LG	1
27	980039245	WASHER, FLAT PLATED, 1/4	2
26	980039169	SHCS 1/4-20 X 3/4" LG	4
25	980039076	SHCS 1/4-20 X 1" LG	2
24	980039072	SHCS 1/4-20 X 1-1/4" LG	1
23	8021292	COVER EXTENDED SLIDE ASSY	1
22	8011340	DRILL BUSHING	1
21	8010964	DROP PLATE , HANGER TOP, MODEL 2009/PS3000	1
20	8010963	CLAMP, HANGER PIVOT	1
19	8010889	SHIM WASHER	1
18	8010888	SHIM WASHER	2
17	8010887	DISC SPRING, .755 ID x 1.50 OD x .072 THK	1
16	8010886	SHOULDER SCREW 1 X 1 X 3/4-10	1
15	8010759	SSS 1/4-20 X 1-3/4"	1
14	8008512	LABEL, PINCH POINT, "D" SIZE	3
13	8008439	LABEL, GENERAL WARNING, "C" SIZE	1
12	8006256	SLIDE/GRIPPER ASSEMBLY, 2008 & 2009	1
11	8006245	PLATE, SLIDE SUPPORT, 2008	1
10	8004460	SSS, #10-32 X 1/8" LG	1
9	8004458	STUD TUBE HANGER, POSITIONING SCREW	1
8	8003841	JAW BRACKET LH	1
7	8003840	JAW BRACKET RH	1
6	8002981	HANGER BOTTOM DROP PLATE	1
5	8001804	CLAMP, NYLON LOOP	1
4	8000690	NUT NYLOCK #8-32	4
3	8000683	FHCS #8-32 X 1/4 LG	2
2	8000461	FHCS #8-32 X 1 IN LG	4
1	8000374	CAPTIVATED THUMB SCREW	2
ITEM	PART NUMBER	DESCRIPTION	QTY

**FIGURE 5.1 BOM**

FIGURE 5.2  
 SERIES 2000 ANVIL HOLDER ASSEMBLY  
 PEM PART NO. 8000672

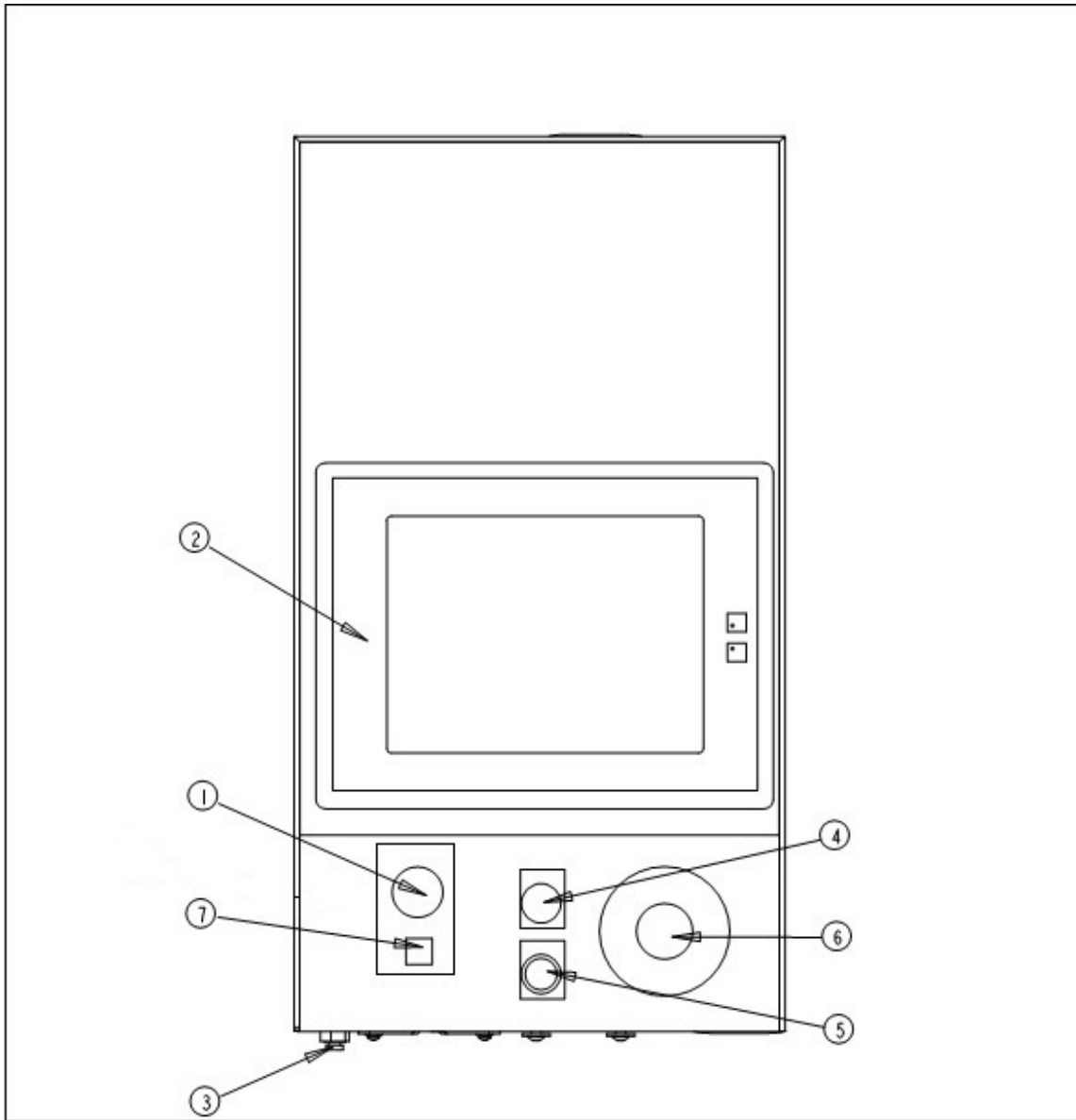


BILL OF MATERIAL			
ITEM	PART NUMBER	DESCRIPTION	QTY
1	800042	ANVIL HOLDER COVER	1
2	8000112	UNIVERSAL ANVIL HOLDER (MODIFIED)	1
3	8000117	ANVIL HOLDER LOCATING PIN	1
4	8000139	ANVIL HOLDER AIR CLY. CLEVIS	1
5	8000257	CLEVIS LOCATING PIN	1
6	8000313	STRAIGHT FITTING 5/32 TUBE TO #10-32	1
7	8000459	SSS #8-32 UNC-2A X 5/8 LG	1
8	8000467	BOTTOM FEED PUSH CYLINDER	1
9	8000828	ROLL PIN, 3/16 DIA. X 1/2 LONG	3
10	8001586	VALVE, SPEED CONTROL, 10-32 X 5-32 TUBING	1
11	8002083	SSS #10-32 X 1/4", KNURLED CUP POINT	1
12	8003753	FITTING, ELBOW, 5/32 TUBE	1
13	8008512	LABEL, PINCH POINT, "D" SIZE	2
14	9800391431	BHCS #10-32 UNF-2A X 1 LG	1
15	9800393014	SHCS #4-40 X 3/4 LG	4



# **SECTION 6**

## **OPERATOR CONTROLS**

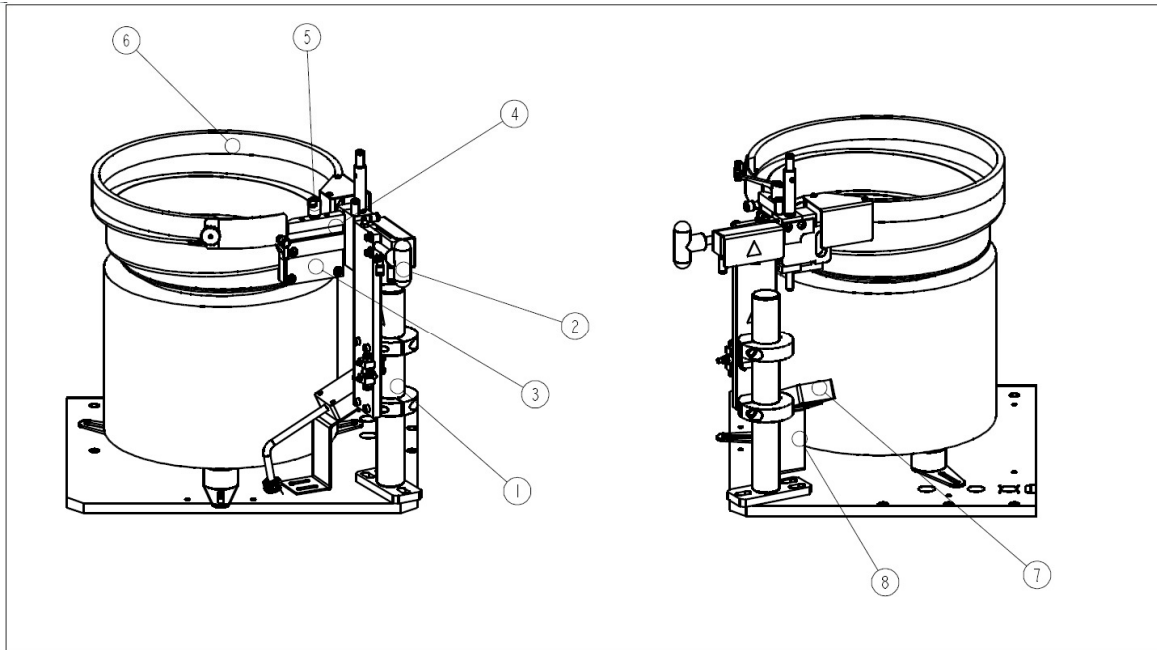


7	8021221	PUSHBUTTON LASER SPOTTING LIGHT	1
6	8021213	PUSHBUTTON EMERGENCY STOP (RED)	1
5	8021215	PUSHBUTTON ON (GREEN)	1
4	8021214	PUSHBUTTON OFF (AMBER)	1
3	8002178	BULKHEAD FITTING 1/4 TUBE	1
2	8016437	TOUCH SCREEN	1
1	8000174	AUDIO ALARM W/ VOLUME CONTROL	1
ITEM	PART NUMBER	DESCRIPTION	QTY

**FIGURE 6.0**

# **SECTION 7**

## **FEEDER BOWL AREA**



N/S	8004168	BOWL POTENTIOMETER 100 KOHM (NOT SHOWN)	1
N/S	8018523	BOWL CONTROL DRIVER, 230VAC (NOT SHOWN)	1
	8008596	BOWL CONTROL DRIVER, 120VAC (NOT SHOWN)	1
N/S	8011353	FEEDER BOWL COIL (MAGNET) 230VAC	1
	8011487	FEEDER BOWL COIL (MAGNET) 120VAC	1
8	8011162	MOUNTING BRACKET RING SENSOR	1
7	8000191	STUD-IN-TUBE SENSOR, 15MM	1
	8002494	STUD-IN-TUBE SENSOR, 25MM	1
6	8007628	BOWL ASSEMBLY, VIBRATORY FEEDER, 230VAC	1
	8007627	BOWL ASSEMBLY, VIBRATORY FEEDER, 120VAC	1
5	8017929	CLAMPING HANDLE, ADJUSTABLE, #10-32 X 1-1/4 LG	1
4	8004481	NUT GATE ADAPTER	1
3	8007630	ESCAPEMENT ADAPTER ASSEMBLY	1
2	8001126	ASSEMBY, SCREW HANDLE	1
1	8011120	SHUTTLE SUPPORT ASSEMBLY	1
ITEM	PART NUMBER	DESCRIPTION	QTY

**FIGURE 7.0**

SERIES 2009 SHUTTLE SUPPORT ASSEMBLY  
P/N 8011120

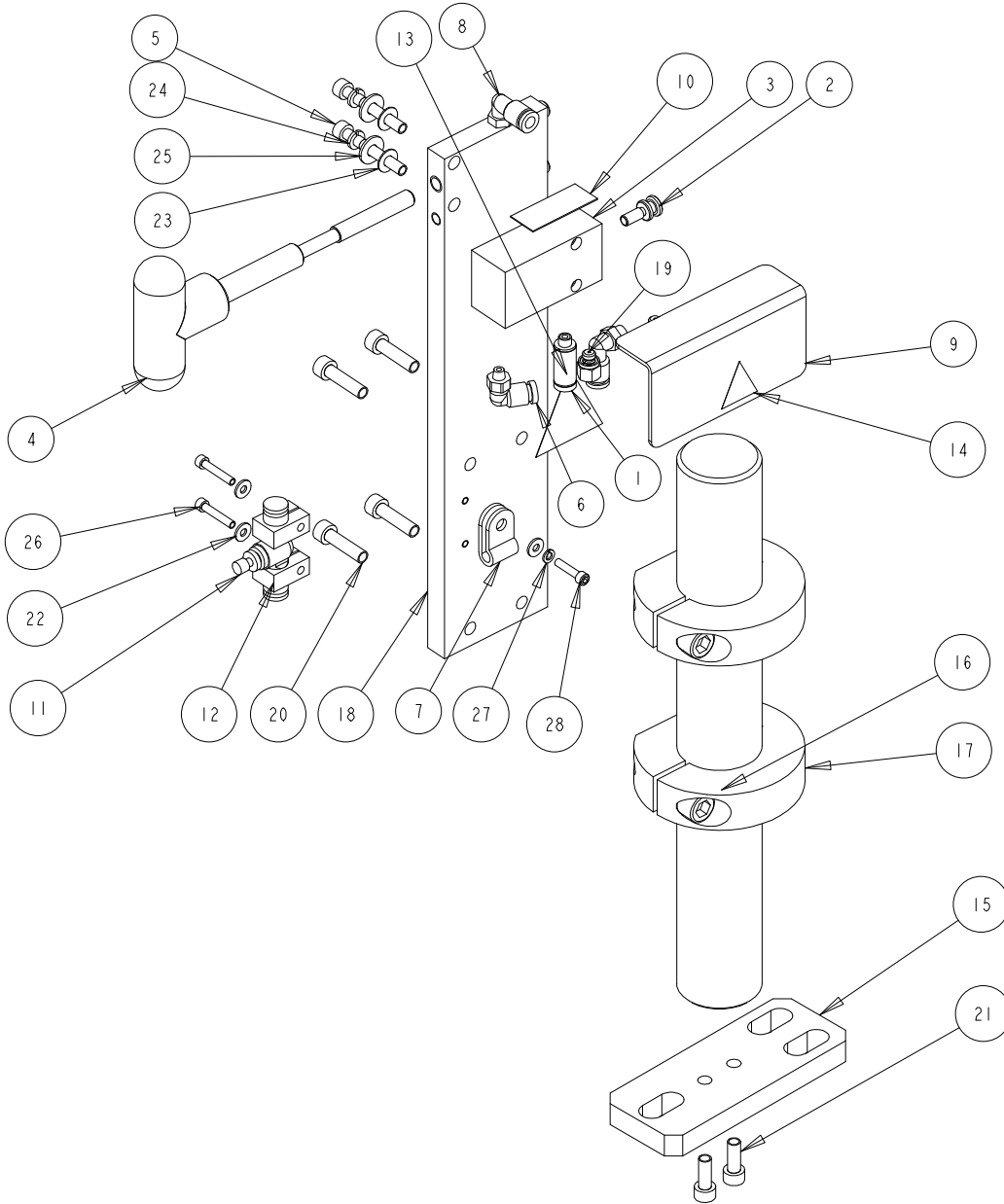


FIGURE 7.1

SERIES 2009 SHUTTLE SUPPORT ASSEMBLY  
P/N 8011120

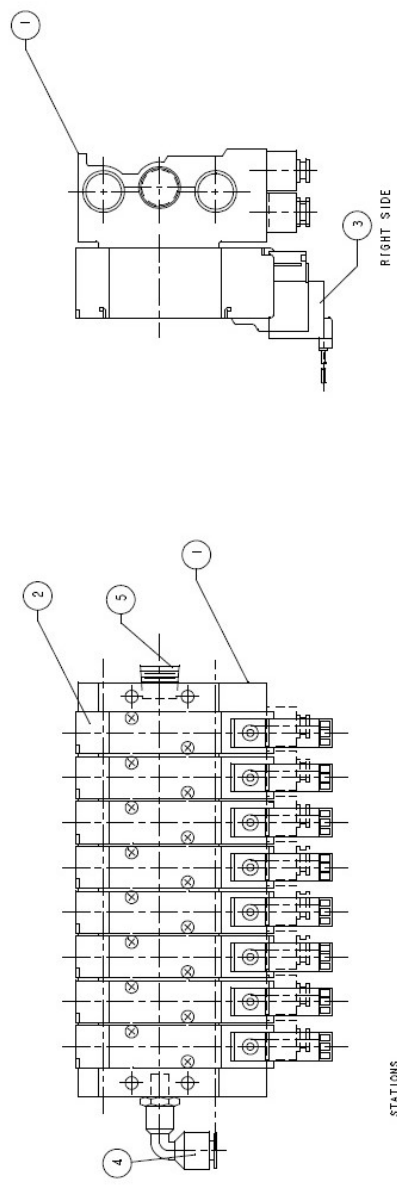
28	9800391026	SHCS #4-40 X 1/2 LG	1
27	9800391019	WASHER, LOCK PLATED, #4	1
26	980039905	SHCS #4-40 X 5/8 LG	2
25	980039837	WASHER, FLAT PLATED, #8	2
24	980039804	WASHER, LOCK PLATED, #8	2
23	980039749	SPUR WASHER	2
22	980039445	WASHER, FLAT PLATED, #4	3
21	980039240	SHCS #10-32 X 1/2 LG	2
20	980039145	SHCS #10-32 X 3/4 LG	4
19	8012384	RESTRICTOR AIR .020 ORAFICE	2
18	<b>8018457</b>	SHUTTLE SUPPORT BRACKET	1
17	8011121	CLAMP COLLAR MODIFIED	2
16	8011119	COLUMN, SHUTTLE SUPPORT	1
15	8011118	BASE PLATE, SHUTTLE SUPPORT	1
14	8008512	LABEL, PINCH POINT, "D" SIZE	1
13	8008439	LABEL, GENERAL WARNING, "C" SIZE	1
12	8006128	FLOW CONTROL BRACKET	2
11	8005969	VALVE FLOW CONTROL 5/32 FITTING	1
10	8002952	DOUBLE SIDED TAPE	1
9	8002951	SHUTTLE GUARD	1
8	8002910	FITTING, MALE ELBOW 1/4" O.D. 10-32	2
7	8001804	CLAMP, NYLON LOOP	1
6	8001681	MALE ELBOW 10-32 UNF X 5/32 TUBING	1
5	8001575	SHCS #8-32 X 1 1/4 LG	2
4	8001126	SCREW HANDLE ASSY, SHUTTLE SUPPORT	1
3	8000680	SHUTTLE AIR CYLINDER	1
2	8000498	SHUTTLE COUPLER	1
1	8000313	STRAIGHT FITTING 5/32 TUBE TO #10-32	1
ITEM	PART NUMBER	DESCRIPTION	QTY

**FIGURE 7.1-2**

## **SECTION 8**

# **TOOLING VALVE ENCLOSURE**

FIGURE 8.1  
 SERIES 2000 - 8 STATION MANIFOLD ASSEMBLY  
 PEM PART NO. 8003054



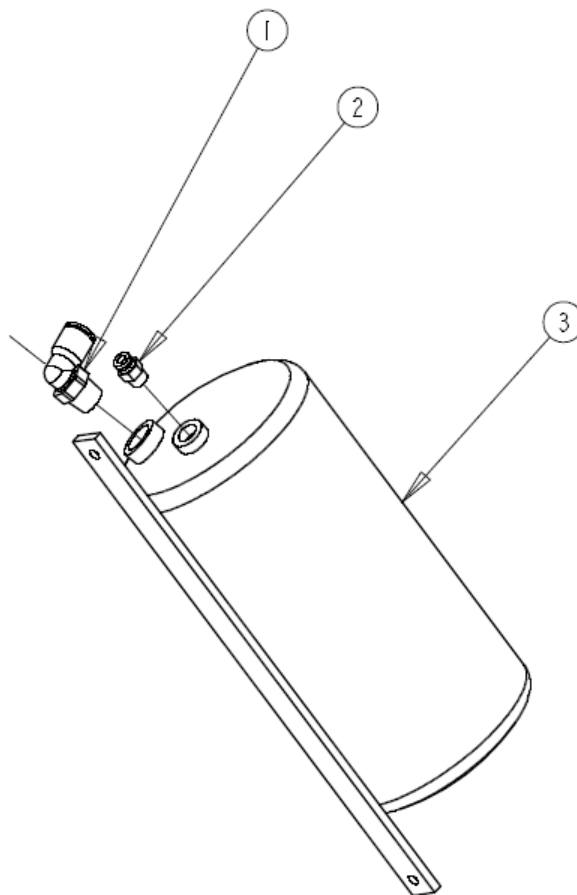
STATIONS

BILL OF MATERIAL			
ITEM	PART NUMBER	DESCRIPTION	QTY
1	8004095	8-STATION MANIFOLD	1
2	8021281	VALVE - 4-WAY, 2-POSITION	8
3	8004074	CONNECTOR WITH 48" LEADS	8
4	8004096	ELBOW 1/4 PT X 1/4 DIA TUBE	1
5	8004097	BRASS PLUG 1/4" NPT.	1

FIGURE 8.1



FIGURE 8.2  
 SERIES 2000 PRESSURE RESERVOIR TANK ASSEMBLY  
 PEM PART NO. 8022411



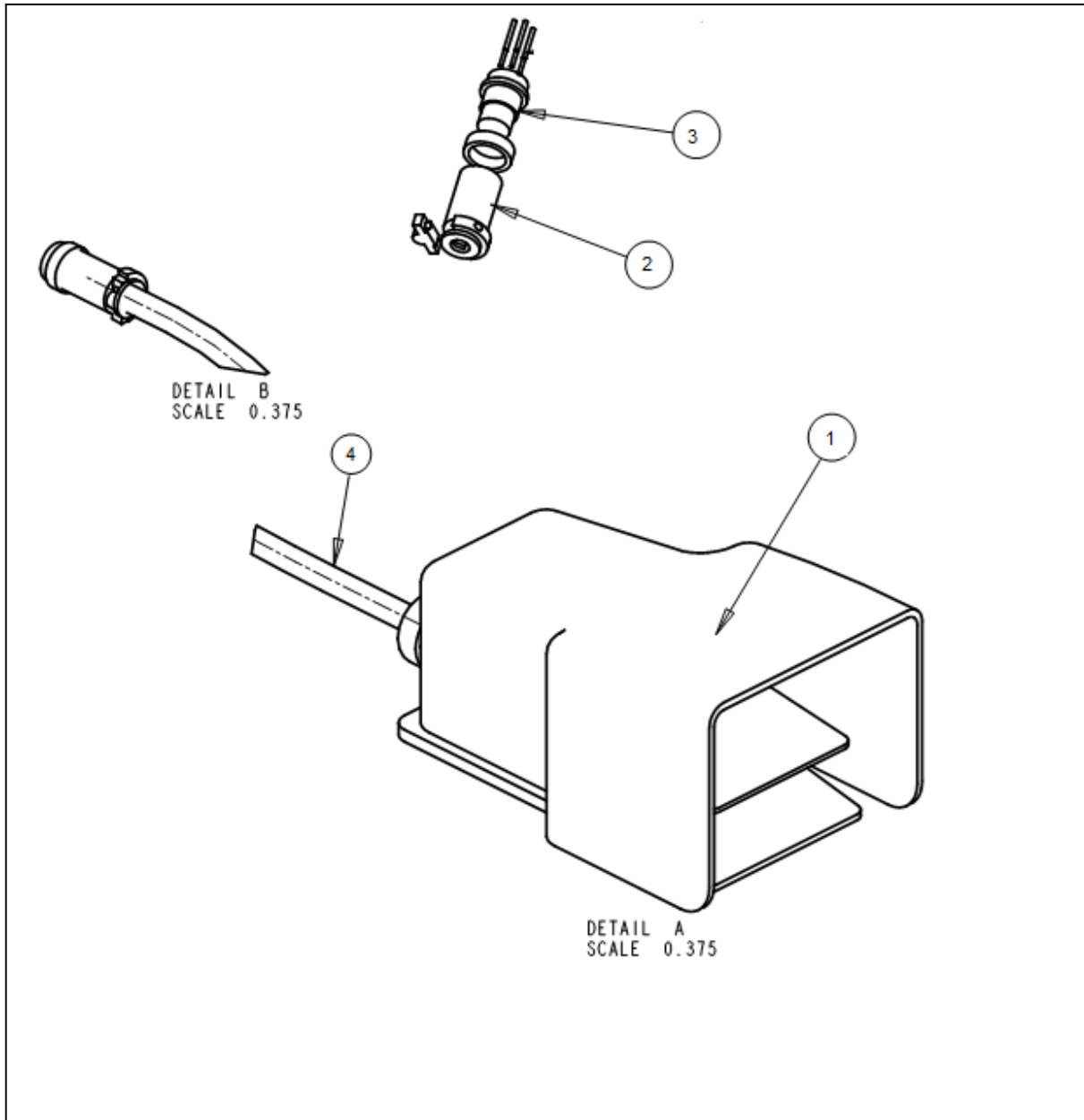
BILL OF MATERIAL

ITEM	PART NUMBER	DESCRIPTION	QTY
1	8000225	FITTING ELBOW, 1/2 NPT TO 1/2 TUBE	1
2	8003245	FITTING 1/4NPT TO 1/4 TUBE	1
3	8015067	AIR PRESSURE RESERVOIR TANK	1

**Reservoir Tank Sintered Filter Kit – 8008675**

# **SECTION 9**

## **FOOTSWITCH ASSEMBLY**

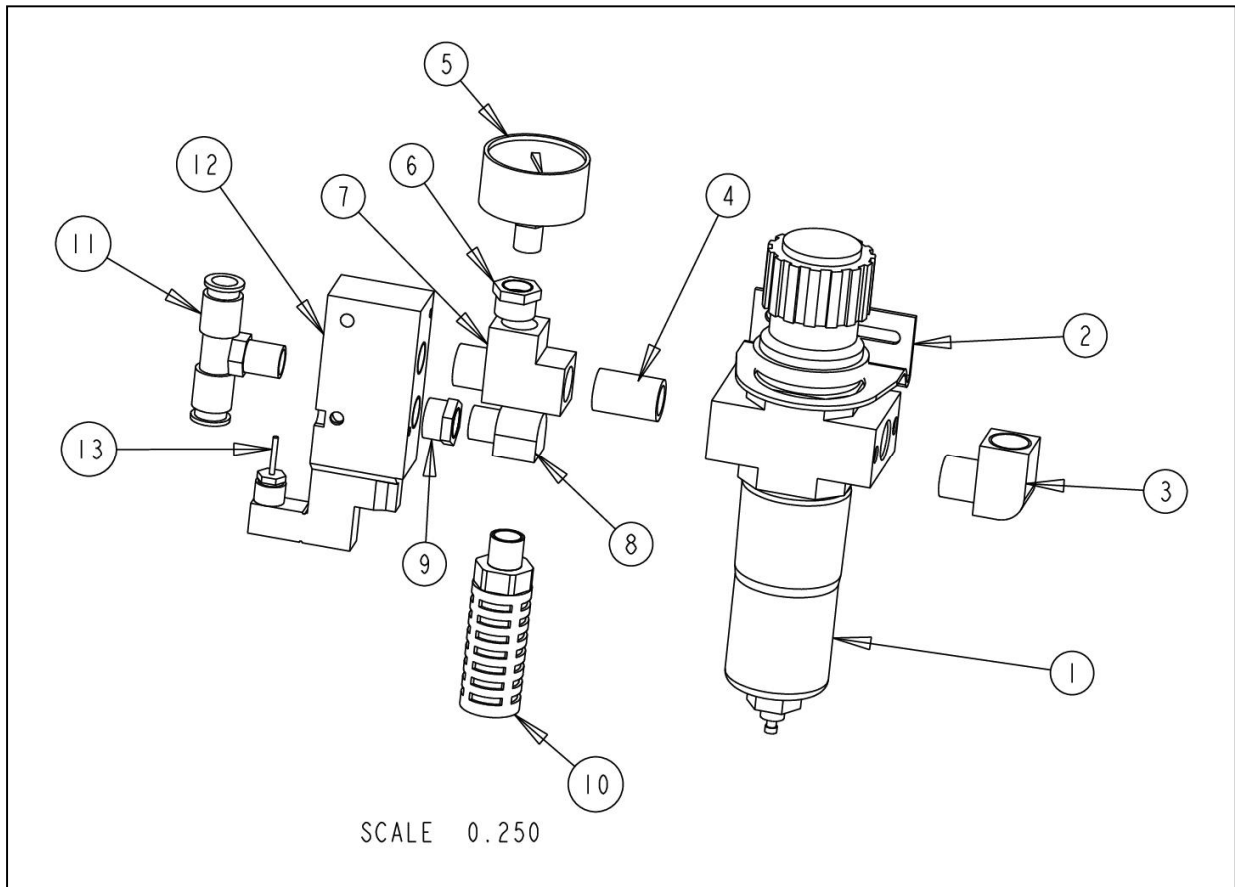


**BILL OF MATERIAL -  
FOOTSWITCH P/N 8015509 - PRESS S/N 1358 & UP**

ITEM	PART NUMBER	DESCRIPTION	QTY
1	8015429	FOOTSWITCH, CHELIC	1
2	8009587	CABLE CLAMP	1
3	980039192	MALE AMPHENOL	1
4	8011815	CORD, 18/3, 300V	1

# **SECTION 10**

## **FILTER/REGULATOR ASSEMBLY**



FILTER/REGULATOR ASSEMBLY – P/N 8022033					
ITEM	P/N	DESCRIPTION	MANUFACTURER	MFG P/N	QTY
1	8015529	FILTER / REGULATOR	FESTO	LFR-1/2-D-5M-0-MIDI	1
2	8015533	BRACKET MOUNTING FILTER/REG	FESTO	512228512	1
3	8011704	½" NIPPLE 1.5" LONG	PRESSURE CON.	3326-08-1.5	1
4	8011705	½" STREET ELBOW	PRESSURE CON.	3400-08-08	1
5	8011706	2", 0-160 PSI GAUGE	UCI	SAD1501-1610	1
6	8011702	½" X ¼" REDUCER BUSHING	PRESSURE CON.	3220-08-04	1
7	8011701	½" MALE RUN TEE	PRESSURE CON.	3750-08-08-08	1
8	8006327	3/8" STREET ELBOW	PARKER	2202P-6-6	1
9	8011703	½" X 3/8" REDUCER BUSHING	PRESSURE CON.	3220-08-06	1
10	806236	MUFFLER EXHAUST 3/8 NPT	ARROW	SQF-3	1
11	8011698	½" NPT X ½" TUBE TEE	PISCO	PB1/2-N4UT	1
12	8011699	½" 3 WAY NC, W/ LIGHTED DIN	MINDMAN	MVSC-460-3E1-NC-L- DC24V	1
13	8011709	60" LEAD 2 CONDUCTOR 18AWG	BELDEN	5300UE 008 (GRY)	1

FIGURE 10.0

# **SECTION 11**

## **GENERAL SPARE PARTS**

**SECTION 11  
SPARE PARTS**

<b>PART DESCRIPTION</b>	<b>PFT PART NUMBER</b>	<b>QTY</b>	<b>FIGURE NO. IN PARTS MANUAL</b>
Auto Transmission Fluid- Dextron III	9800391484	4 QTS	N/A
VALVE, BOOSTER	8002228	1	Figure 2.2
VALVE, RAM	8002229	1	Figure 2.2
SENSOR, SAFETY	8009715	1	Figure 4
VALVE, 4 WAY 2 POSITION KIT	8021283	1	Figure 8.1
AIR CYL. (SHUTTLE)	8000680	1	Figure 2.1
AIR CYL. (PUSHER)	8000467	1	Figure 5.2
GRIPPER	8006257	1	Figure 5.1
LINEAR SLIDE	8006258	1	Figure 5.1
FUSE KIT	8004145	1	Fuses in Figure 3
CPU	8017455	1	Figure 3
POWER SUPPLY RACK	8011319	1	Figure 3
ANALOG LVDT INPUT	8011346	1	Figure 3
SIXTEEN (16) POINT DC OUTPUT MODULE	8011345	1	Figure 3
POWER SUPPLY, 24V	8013935	1	Figure 3
ELECTRONIC PILOT REGULATOR	8018522	1	Figure 2
BOWL CONTROL DRIVER	8008596 (120VAC) 8018523 (230VAC)	1	Figure 7.0 (Not Shown)
BOWL POTENTIOMETER 100 KOHM	8004168	1	Figure 7.0 (Not Shown)
RESERVOIR TANK SINTERED FILTER KIT	8008675	1	Figure 8.2 (Not Shown)

**TUBING FOR THE PEMSERTER® SERIES 2000® PRESS:**

<b>PART NUMBER</b>	<b>DESCRIPTION</b>
8000253	TUBING 1/2" DIA POLYURETHANE, BLACK
8000310	TUBING 1/4" DIA POLYURETHANE, BLACK
8000311	TUBING 5/32" DIA POLYURETHANE, BLACK
8000454	TUBING 1/8" DIA POLYURETHANE, BLACK
8000766	TUBING.500 OD x.320ID POLYURETHANE, CLEAR
8004090	TUBING 5/16" DIA POLYURETHANE, BLACK
980039010	TUBING 1/4" DIA POLYURETHANE, CLEAR

**AVAILABLE OPTIONS FOR THE PEMSERTER® SERIES 2000® PRESS:**

<b>PART NUMBER</b>	<b>DESCRIPTION</b>
8000191	15mm DIA STUD-IN-TUBE SENSOR
8002937	SWEEPER ASSEMBLY FOR FEEDER BOWL
8012636	SWEEPER ASSEMBLY FOR FEEDER BOWL - 2009

**REPAIR KITS FOR THE PEMSERTER® SERIES 2000® PRESS MODEL 2007/2008 UP:**

<b>PART NUMBER</b>	<b>DESCRIPTION</b>
8003242	SHEFFER MAIN CYLINDER REPAIR KIT
8003243	SHEFFER BOOSTER REPAIR KIT
8005458	MILLER MAIN CYLINDER REPAIR KIT
8005459	MILLER BOOSTER REPAIR KIT
8022071	SUNNY BOOSTER REPAIR KIT

**FILTERS FOR THE PEMSERTER® SERIES 2000® PRESS MODEL 2008/18 UP**

<b>PART NUMBER</b>	<b>DESCRIPTION</b>
8006365	FILTER REGULATOR ELEMENT (FIGURE 10.0-B)
8003139	FILTER ELECTRONIC REGULATOR (FIGURE 2)

**PRESS ACCESSORIES**

<b>PART NUMBER</b>	<b>DESCRIPTION</b>	<b>FEATURES AND BENEFITS</b>
8005538 (120V) (US) 8005539 (220V) (EUROPE)	INDUSTRIAL WORK LIGHT	<ul style="list-style-type: none"> <li>• FLEXIBLE, EFFICIENT COVERAGE OF WORKING AREA</li> <li>• BRIGHT 20W HALOGEN BULB</li> <li>• MAGNETIC BASE MOUNTS TO FRAME</li> <li>• 120V/220V MODELS AVAILABLE</li> </ul>



**PRESS ACCESSORIES (Continued)**

<b>PART NUMBER</b>	<b>DESCRIPTION</b>	<b>FEATURES AND BENEFITS</b>
8005534	COALESCING FILTER	<ul style="list-style-type: none"> <li>• HIGHER LEVEL OF FILTRATION - REMOVES 93% OF 0.01 MICRON PARTICLES</li> <li>• AUTOMATIC DRAIN WITH SIGHT-GLASS FOR MONITORING FLUID LEVELS</li> <li>• BUILT-IN DIFFERENTIAL PRESSURE INDICATORS</li> <li>• 1/4 TURN QUICK RELEASE BOWL FOR EASY MAINTENANCE</li> </ul>
8005537	ANTI-FATIGUE WORK MAT	<ul style="list-style-type: none"> <li>• SOLID POLYURETHANE NODULE DESIGN INCREASES BLOOD CIRCULATION AND REDUCES CUMULATIVE TRAUMA DISORDERS ASSOCIATED WITH PROLONGED STANDING.</li> <li>• CHEMICAL RESISTANT</li> <li>• DURABLE AND EASY TO CLEAN</li> <li>• SHOCK ABSORBENT WITH TAPERED EDGES</li> <li>• 24" BY 36"</li> <li>• TWO YEAR WEAR WARRANTY</li> </ul>
8005531	INDUSTRIAL WORK SEAT	<ul style="list-style-type: none"> <li>• ERGONOMIC DESIGN IMPROVES COMFORT AND INCREASES WORKER PRODUCTIVITY</li> <li>• FOUR EASY TO USE HEIGHT (16" TO 32") AND TILT ADJUSTMENTS</li> <li>• DURABLE POLYURETHANE SEAT</li> <li>• FOOT REST STEP RAIL</li> <li>• BUILT TOUGH FOR INDUSTRIAL ENVIRONMENT</li> <li>• SWIVEL STOP FEATURE MAKES GETTING ON AND OFF THE CHAIR EASY AND SAFE</li> <li>• FIVE YEAR, THREE SHIFT WARRANTY</li> </ul>
8005540 (UK)	220V SURGE SUPPRESSOR	• ADDED OVER-VOLTAGE PROTECTION FOR ELECTRONICS
8005541 (GER)		• CONTINUOUSLY MONITORED BY BUILT-IN TEMPERATURE FUSE
8005542 (FR)		• LIGHT AND AUDIO DEFECT SIGNAL
		• CONVENIENT IN-LINE CONNECTION