

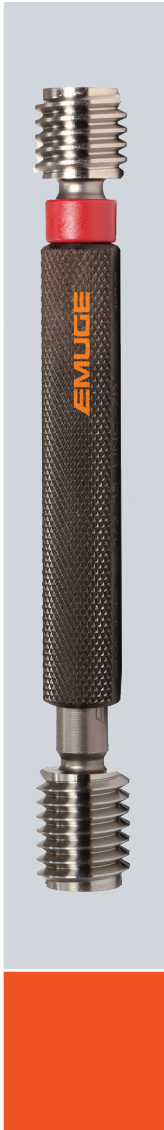


COMPLETE
METALWORKING
SOLUTIONS

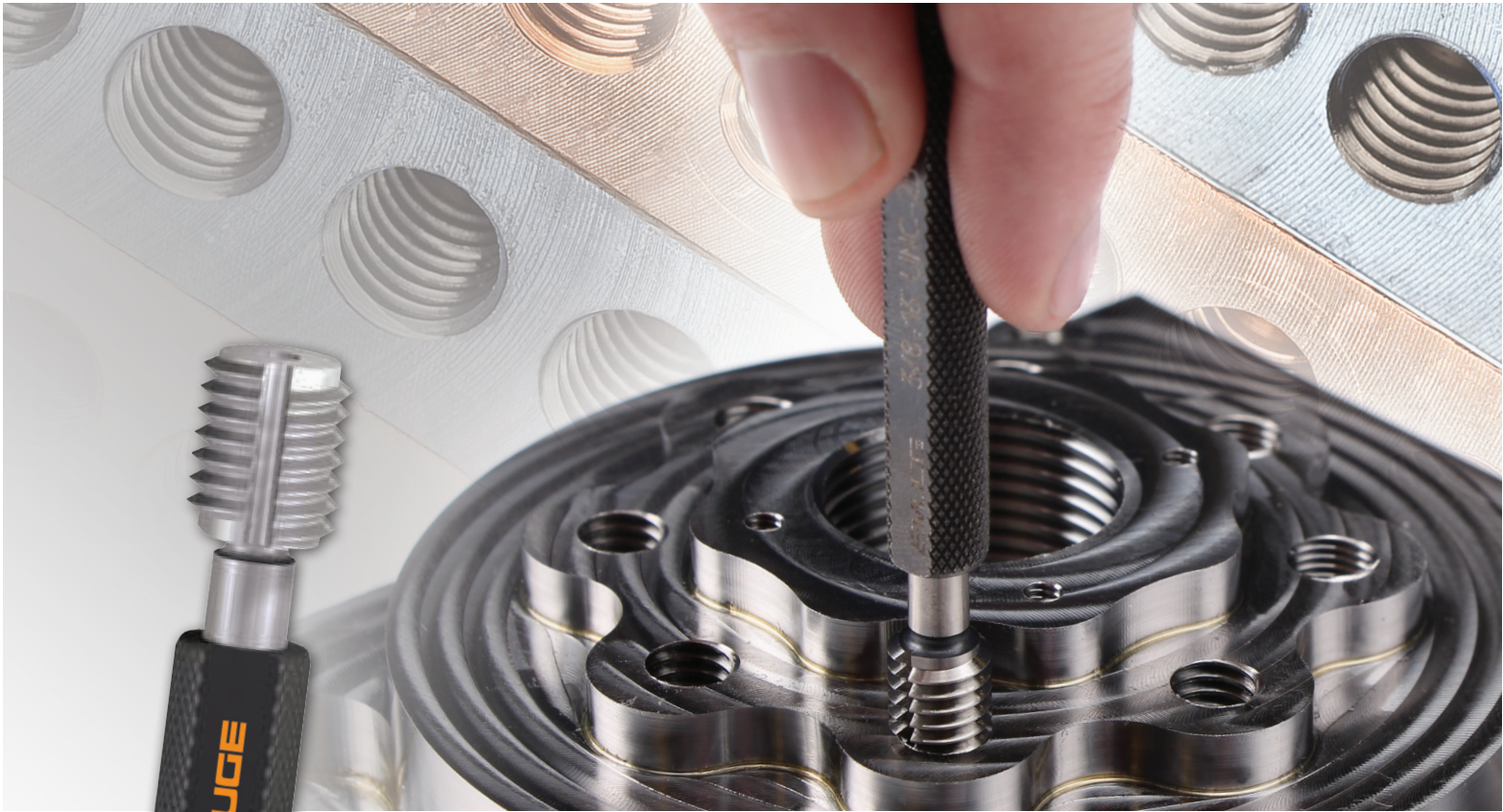
(800) 991-4225
www.ahbinc.com
ISO Certified
customerservice@ahbinc.com



NEW
Expanded Line



EMUGE
PRECISION THREAD
GAGING SOLUTIONS



Precision Fixed Limit Thread Gages

EMUGE-FRANKEN's comprehensive line of thread gages consist of GO/NO-GO plug gages, thread depth plug gages and ring gages. A Certificate of Accuracy is furnished with each gage.*

Gages inspect the pitch diameter and functional thread for internal-threaded components.

Features:

- Exceptionally hardened tool steel and highly accurate
- Full range of inch, metric sizes in coarse, fine, UNC, UNF, UNEF, STI, NPT, NPTF, along with EMUGE Self-Lock™ thread forms
- Accommodates 2B, 3B, 5H, and 6H classes of fit
- Stable thread start for easy insertion
- Eliminate thread damage in demanding environments
- * • Short form Certificate of Accuracy is furnished free with each gage. Long form Certificates are available upon request

Gage certification is performed by accredited calibration service "DECOM UGK GmbH" calibration laboratory



Accommodates **2B, 3B, 5H, 6H** classes of fit.

On sizes $\frac{1}{4}$ " or 5.5mm and above, a **dirt groove** is provided on the GO side to eliminate thread damage in demanding environments.

Exceptionally hardened tool steel and highly accurate.

A full range of stocked inch and metric gages are manufactured to **ANSI B1.2** (unified screw threads), **ANSI B1.16M** (metric M series screw threads) and **DIN ISO 1502** (metric series screw threads).

Incomplete threads are removed until the beginning of the full thread, in order to create a stable thread start.

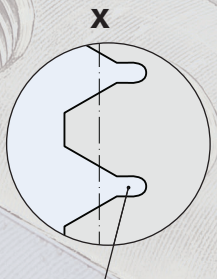
Gage handles with double surfaces for marking, leaving ample space for custom marking requirements. (An Emuge service that is available.)

Knurled handles for maximum gripping ability and safety.

Clearly identified with the size and Emuge identification number for traceability.

Short form **Certificate of Accuracy** is furnished free with each gage. Long form Certificates are available upon request.

The NO-GO side is clearly marked with a **red ring**.



Recessed minor thread diameter of the NO-GO gages for safe function.

Reduced thread start for easy insertion of the NO-GO gage body.



UNC

	Size - TPI	EDP No.
2B Class of Fit	#1 - 64	L0100100.5000
	#2 - 56	L0100100.5001
	#3 - 48	L0100100.5002
	#4 - 40	L0100100.5003
	#5 - 40	L0100100.5004
	#6 - 32	L0100100.5005
	#8 - 32	L0100100.5006
	#10 - 24	L0100100.5007
	#12 - 24	L0100100.5008
	1/4 - 20	L0100100.5009
	5/16 - 18	L0100100.5010
	3/8 - 16	L0100100.5011
	7/16 - 14	L0100100.5012
	1/2 - 13	L0100100.5013
	9/16 - 12	L0100100.5014
	5/8 - 11	L0100100.5015
	3/4 - 10	L0100100.5016
7/8 - 9	L0100100.5017	
1" - 8	L0100100.5018	
1 1/8 - 7	L0100100.5019	
1 1/4 - 7	L0100100.5020	
1 3/8 - 6	L0100100.5021	
1 1/2 - 6	L0100100.5022	
3B Class of Fit	#1 - 64	L0100110.5000
	#2 - 56	L0100110.5001
	#3 - 48	L0100110.5002
	#4 - 40	L0100110.5003
	#5 - 40	L0100110.5004
	#6 - 32	L0100110.5005
	#8 - 32	L0100110.5006
	#10 - 24	L0100110.5007
	#12 - 24	L0100110.5008
	1/4 - 20	L0100110.5009
	5/16 - 18	L0100110.5010
	3/8 - 16	L0100110.5011
	7/16 - 14	L0100110.5012
	1/2 - 13	L0100110.5013
	9/16 - 12	L0100110.5014
	5/8 - 11	L0100110.5015
	3/4 - 10	L0100110.5016

UNC (CONT.)

	Size - TPI	EDP No.
3B Class of Fit	7/8 - 9	L0100110.5017
	1" - 8	L0100110.5018
	1 1/8 - 7	L0100110.5019
	1 1/4 - 7	L0100110.5020
	1 3/8 - 6	L0100110.5021
	1 1/2 - 6	L0100110.5022

UNF

	Size - TPI	EDP No.
2B Class of Fit	#0 - 80	L0100100.5033
	#1 - 72	L0100100.5034
	#2 - 64	L0100100.5035
	#3 - 56	L0100100.5036
	#4 - 48	L0100100.5037
	#5 - 44	L0100100.5038
	#6 - 40	L0100100.5039
	#8 - 36	L0100100.5040
	#10 - 32	L0100100.5041
	#12 - 28	L0100100.5042
	1/4 - 28	L0100100.5043
	5/16 - 24	L0100100.5044
3/8 - 24	L0100100.5045	
7/16 - 20	L0100100.5046	
1/2 - 20	L0100100.5047	
9/16 - 18	L0100100.5048	
5/8 - 18	L0100100.5049	
3/4 - 16	L0100100.5050	
7/8 - 14	L0100100.5051	
1" - 12	L0100100.5052	
1 1/8 - 12	L0100100.5053	
1 1/4 - 12	L0100100.5054	
1 3/8 - 12	L0100100.5055	
1 1/2 - 12	L0100100.5056	
3B Class of Fit	#0 - 80	L0100110.5033
	#1 - 72	L0100110.5034
	#2 - 64	L0100110.5035
	#3 - 56	L0100110.5036
	#4 - 48	L0100110.5037
#5 - 44	L0100110.5038	

UNF (CONT.)

	Size - TPI	EDP No.
3B Class of Fit	#6 - 40	L0100110.5039
	#8 - 36	L0100110.5040
	#10 - 32	L0100110.5041
	#12 - 28	L0100110.5042
	1/4 - 28	L0100110.5043
	5/16 - 24	L0100110.5044
	3/8 - 24	L0100110.5045
	7/16 - 20	L0100110.5046
	1/2 - 20	L0100110.5047
	9/16 - 18	L0100110.5048
	5/8 - 18	L0100110.5049
	3/4 - 16	L0100110.5050
	7/8 - 14	L0100110.5051
	1" - 12	L0100110.5052
	1 1/8 - 12	L0100110.5053
	1 1/4 - 12	L0100110.5054
	1 3/8 - 12	L0100110.5055
1 1/2 - 12	L0100110.5056	

UNEF

	Size - TPI	EDP No.
2B Class of Fit	1/4 - 32	L0100100.5058
	5/16 - 32	L0100100.5059
	3/8 - 32	L0100100.5060
	7/16 - 28	L0100100.5061
	1/2 - 28	L0100100.5062
	9/16 - 24	L0100100.5063
	5/8 - 24	L0100100.5064
	3/4 - 20	L0100100.5066
	7/8 - 20	L0100100.5068
1" - 20	L0100100.5070	
3B Class of Fit	1/4 - 32	L0100110.5058
	5/16 - 32	L0100110.5059
	3/8 - 32	L0100110.5060
	7/16 - 28	L0100110.5061
	1/2 - 28	L0100110.5062
	9/16 - 24	L0100110.5063
5/8 - 24	L0100110.5064	
7/8 - 20	L0100110.5068	
1" - 20	L0100110.5070	



STI UNC

	Size - TPI	EDP No.
2B Class of Fit	#2 - 56	L0100100.5609
	#4 - 40	L0100100.5611
	#5 - 40	L0100100.5612
	#6 - 32	L0100100.5613
	#8 - 32	L0100100.5614
	#10 - 24	L0100100.5615
	#12 - 24	L0100100.5616
	1/4 - 20	L0100100.5617
	5/16 - 18	L0100100.5618
	3/8 - 16	L0100100.5619
	7/16 - 14	L0100100.5620
	1/2 - 13	L0100100.5621
	9/16 - 12	L0100100.5622
	5/8 - 11	L0100100.5623
	3/4 - 10	L0100100.5624
	7/8 - 9	L0100100.5625
1" - 8	L0100100.5626	
3B Class of Fit	#2 - 56	L0100110.5609
	#4 - 40	L0100110.5611
	#5 - 40	L0100110.5612
	#6 - 32	L0100110.5613
	#8 - 32	L0100110.5614
	#10 - 24	L0100110.5615
	#12 - 24	L0100110.5616
	1/4 - 20	L0100110.5617
	5/16 - 18	L0100110.5618
	3/8 - 16	L0100110.5619
	7/16 - 14	L0100110.5620
	1/2 - 13	L0100110.5621
	9/16 - 12	L0100110.5622
	5/8 - 11	L0100110.5623
	3/4 - 10	L0100110.5624
	7/8 - 9	L0100110.5625
1" - 8	L0100110.5626	

STI UNF

	Size - TPI	EDP No.	
2B Class of Fit	#4 - 48	L0100100.5633	
	#6 - 40	L0100100.5635	
	#8 - 36	L0100100.5636	
	#10 - 32	L0100100.5637	
	1/4 - 28	L0100100.5639	
	5/16 - 24	L0100100.5640	
	3/8 - 24	L0100100.5641	
	7/16 - 20	L0100100.5642	
	1/2 - 20	L0100100.5643	
	9/16 - 18	L0100100.5644	
	5/8 - 18	L0100100.5645	
	3/4 - 16	L0100100.5646	
	7/8 - 14	L0100100.5647	
	1" - 12	L0100100.5648	
	3B Class of Fit	#4 - 48	L0100110.5633
		#6 - 40	L0100110.5635
#8 - 36		L0100110.5636	
#10 - 32		L0100110.5637	
1/4 - 28		L0100110.5639	
5/16 - 24		L0100110.5640	
3/8 - 24		L0100110.5641	
7/16 - 20		L0100110.5642	
1/2 - 20		L0100110.5643	
9/16 - 18		L0100110.5644	
5/8 - 18	L0100110.5645		
3/4 - 16	L0100110.5646		
7/8 - 14	L0100110.5647		
1" - 12	L0100110.5648		



NPT

Size - TPI	EDP No.
1/16 - 27	L0500100.5763
1/8 - 27	L0500100.5764
1/4 - 18	L0500100.5765
3/8 - 18	L0500100.5766
1/2 - 14	L0500100.5767
3/4 - 14	L0500100.5768
1" - 11 - 1/2	L0500100.5769

NPTF

Size - TPI	EDP No.
1/16 - 27	L0520100.5782
1/8 - 27	L0520100.5783
1/4 - 18	L0520100.5784
3/8 - 18	L0520100.5785
1/2 - 14	L0520100.5786
3/4 - 14	L0520100.5787



METRIC / ANSI*

	Size x Pitch	EDP No.
6H Class of Fit	M 1.6 x 0.35	LU100100.0016
	M 2 x 0.4	LU100100.0020
	M 2.5 x 0.45	LU100100.0025
	M 3 x 0.5	LU100100.0030
	M 3.5 x 0.6	LU100100.0035
	M 4 x 0.7	LU100100.0040
	M 5 x 0.8	LU100100.0050
	M 6 x 1	LU100100.0060
	M 8 x 1.25	LU100100.0080
	M 10 x 1.5	LU100100.0100
	M 11 x 1.5	LU100100.0111
	M 12 x 1.75	LU100100.0112
	M 14 x 2	LU100100.0114
	M 16 x 2	LU100100.0116
	M 18 x 2.5	LU100100.0118
	M 20 x 2.5	LU100100.0120
	M 22 x 2.5	LU100100.0122
	M 24 x 3	LU100100.0124
M 30 x 3.5	LU100100.0130	
M 36 x 4	LU100100.0136	

METRIC FINE / ANSI*

	Size x Pitch	EDP No.
6H Class of Fit	M 5 x 0.5	LU100100.0218
	M 6 x 0.75	LU100100.0229
	M 8 x 0.75	LU100100.0250
	M 8 x 1	LU100100.0251
	M 10 x 1	LU100100.0276
	M 10 x 1.25	LU100100.0277
	M 12 x 1.25	LU100100.0302
	M 12 x 1.5	LU100100.0303
	M 14 x 1.5	LU100100.0331
	M 15 x 1.5	LU100100.0345
	M 16 x 1.5	LU100100.0359
	M 18 x 1.5	LU100100.0390
	M 20 x 1.5	LU100100.0422
	M 22 x 1.5	LU100100.0438

METRIC / DIN**

	Size x Pitch	EDP No.
5H Class of Fit	M 1 x 0.25	L0100100.0010
	M 1.1 x 0.25	L0100100.0011
	M 1.2 x 0.25	L0100100.0012
	M 1.4 x 0.3	L0100100.0014
6H Class of Fit	M 1.6 x 0.35	L0100100.0016
	M 1.7 x 0.35	L0100100.0017
	M 1.8 x 0.35	L0100100.0018
	M 2 x 0.4	L0100100.0020
	M 2.2 x 0.45	L0100100.0022
	M 2.3 x 0.4	L0100100.0023
	M 2.5 x 0.45	L0100100.0025
	M 2.6 x 0.45	L0100100.0026
	M 3 x 0.5	L0100100.0030
	M 3.5 x 0.6	L0100100.0035
	M 4 x 0.7	L0100100.0040
	M 4.5 x 0.75	L0100100.0045
	M 5 x 0.8	L0100100.0050
	M 6 x 1	L0100100.0060
	M 7 x 1	L0100100.0070
	M 8 x 1.25	L0100100.0080
	M 9 x 1.25	L0100100.0090
	M 10 x 1.5	L0100100.0100
	M 11 x 1.5	L0100100.0111
	M 12 x 1.75	L0100100.0112
	M 14 x 2	L0100100.0114
	M 16 x 2	L0100100.0116
	M 18 x 2.5	L0100100.0118
	M 20 x 2.5	L0100100.0120
	M 22 x 2.5	L0100100.0122
	M 24 x 3	L0100100.0124
	M 27 x 3	L0100100.0127
	M 30 x 3.5	L0100100.0130
	M 33 x 3.5	L0100100.0133
	M 36 x 4	L0100100.0136
M 39 x 4	L0100100.0139	

METRIC FINE / DIN**

	Size x Pitch	EDP No.
6H Class of Fit	M 2.5 x 0.35	L0100100.0196
	M 2.6 x 0.35	L0100100.0199
	M 3 x 0.35	L0100100.0202
	M 3.5 x 0.35	L0100100.0205
	M 4 x 0.35	L0100100.0209
	M 4 x 0.5	L0100100.0210
	M 4.5 x 0.5	L0100100.0214
	M 5 x 0.35	L0100100.0217
	M 5 x 0.5	L0100100.0218
	M 5 x 0.75	L0100100.0219
	M 6 x 0.35	L0100100.0227
	M 6 x 0.5	L0100100.0228
	M 6 x 0.75	L0100100.0229
	M 7 x 0.75	L0100100.0239
	M 8 x 0.5	L0100100.0249
	M 8 x 0.75	L0100100.0250
	M 8 x 1	L0100100.0251
	M 9 x 0.75	L0100100.0262
	M 9 x 1	L0100100.0263
	M 10 x 0.5	L0100100.0274
	M 10 x 0.75	L0100100.0275
	M 10 x 1	L0100100.0276
	M 10 x 1.25	L0100100.0277
	M 11 x 0.75	L0100100.0287
	M 11 x 1	L0100100.0288
	M 12 x 0.5	L0100100.0299
	M 12 x 0.75	L0100100.0300
	M 12 x 1	L0100100.0301
	M 12 x 1.25	L0100100.0302
	M 12 x 1.5	L0100100.0303
	M 13 x 1	L0100100.0315
	M 13 x 1.5	L0100100.0317
	M 14 x 1	L0100100.0329
	M 14 x 1.25	L0100100.0330
	M 14 x 1.5	L0100100.0331
M 15 x 1	L0100100.0343	
M 15 x 1.5	L0100100.0345	
M 16 x 0.5	L0100100.0355	
M 16 x 0.75	L0100100.0356	
M 16 x 1	L0100100.0357	

* Gage dimensions according to ANSI B1.16M

** Gage dimensions according to DIN ISO 1502



For safety/thread-critical applications

METRIC FINE / DIN** (CONT.)

Size x Pitch	EDP No.
M 16 x 1.5	L0100100.0359
M 17 x 1	L0100100.0372
M 17 x 1.5	L0100100.0374
M 18 x 1	L0100100.0388
M 18 x 1.5	L0100100.0390
M 18 x 2	L0100100.0391
M 19 x 1	L0100100.0404
M 19 x 1.5	L0100100.0406
M 20 x 0.5	L0100100.0418
M 20 x 0.75	L0100100.0419
M 20 x 1	L0100100.0420
M 20 x 1.5	L0100100.0422
M 20 x 2	L0100100.0423
M 21 x 1	L0100100.0428
M 21 x 1.5	L0100100.0430
M 22 x 1	L0100100.0436
M 22 x 1.5	L0100100.0438
M 22 x 2	L0100100.0439
M 23 x 1	L0100100.0443
M 24 x 1	L0100100.0450
M 24 x 1.5	L0100100.0452
M 24 x 2	L0100100.0453
M 25 x 1	L0100100.0456
M 25 x 1.5	L0100100.0458
M 25 x 2	L0100100.0459
M 26 x 1	L0100100.0462
M 26 x 1.5	L0100100.0464
M 26 x 2	L0100100.0465
M 27 x 1	L0100100.0468
M 27 x 1.5	L0100100.0470
M 27 x 2	L0100100.0471
M 28 x 1	L0100100.0474
M 28 x 1.5	L0100100.0476
M 28 x 2	L0100100.0477
M 30 x 0.75	L0100100.0487
M 30 x 1	L0100100.0488
M 30 x 1.5	L0100100.0490
M 30 x 2	L0100100.0491
M 30 x 3	L0100100.0492
M 32 x 1	L0100100.0502

METRIC FINE / DIN** (CONT.)

Size x Pitch	EDP No.
M 32 x 1.5	L0100100.0504
M 32 x 2	L0100100.0505
M 33 x 1	L0100100.0509
M 33 x 1.5	L0100100.0511
M 33 x 2	L0100100.0512
M 33 x 3	L0100100.0513
M 34 x 1	L0100100.0516
M 34 x 1.5	L0100100.0518
M 34 x 2	L0100100.0519
M 35 x 1	L0100100.0523
M 35 x 1.5	L0100100.0525
M 35 x 2	L0100100.0526
M 36 x 1	L0100100.0530
M 36 x 1.5	L0100100.0532
M 36 x 2	L0100100.0533
M 36 x 3	L0100100.0534
M 38 x 1	L0100100.0544
M 38 x 1.5	L0100100.0546
M 38 x 2	L0100100.0547
M 39 x 1	L0100100.0551
M 39 x 1.5	L0100100.0553
M 39 x 2	L0100100.0554
M 39 x 3	L0100100.0555
M 40 x 1	L0100100.0558
M 40 x 1.5	L0100100.0560
M 40 x 2	L0100100.0561
M 40 x 3	L0100100.0562

SELF-LOCK™ LK

Size - TPI or x Pitch	EDP No.
#2 - 56	L0100100.5654
#4 - 40	L0100100.5656
#6 - 32	L0100100.5658
#8 - 32	L0100100.5659
#10 - 24	L0100100.5660
#12 - 24	L0100100.5661
1/4 - 20	L0100100.5662
5/16 - 18	L0100100.5663
3/8 - 16	L0100100.5664
7/16 - 14	L0100100.5665
1/2 - 13	L0100100.5666
9/16 - 12	L0100100.5667
5/8 - 11	L0100100.5668
3/4 - 10	L0100100.5669
7/8 - 9	L0100100.5670
1" - 8	L0100100.5671
#4 - 48	L0100100.5707
#6 - 40	L0100100.5709
#8 - 36	L0100100.5710
#10 - 32	L0100100.5711
1/4 - 28	L0100100.5713
5/16 - 24	L0100100.5714
3/8 - 24	L0100100.5715
7/16 - 20	L0100100.5716
1/2 - 20	L0100100.5717
9/16 - 18	L0100100.5718
5/8 - 18	L0100100.5719
3/4 - 16	L0100100.5720
M 3 x 0.5	L0100100.1046
M 4 x 0.7	L0100100.1048
M 5 x 0.8	L0100100.1050
M 6 x 1	L0100100.1052
M 8 x 1.25	L0100100.1054
M 10 x 1.5	L0100100.1056
M 12 x 1.75	L0100100.1058
M 14 x 2	L0100100.1059
M 16 x 2	L0100100.1060
M 20 x 2.5	L0100100.1062
M 24 x 3	L0100100.1064

** Gage dimensions according to DIN ISO 1502

TIN Coated Gages

- High dimensionally stable HSS
- **Enhanced durability saves time, cost:** TIN coating increases hardness and wear resistance, extending lifespan and reducing frequency of calibrations and replacements
- **Improved accuracy:** coating reduces friction, for more consistent measurements and precise thread sizing



UNC – TIN COATED

	Size - TPI	EDP No.
3B Tolerance	#4 - 40	L0105110.5003
	#6 - 32	L0105110.5005
	#8 - 32	L0105110.5006
	#10 - 24	L0105110.5007
	#12 - 24	L0105110.5008
	1/4 - 20	L0105110.5009
	5/16 - 18	L0105110.5010
	3/8 - 16	L0105110.5011
	7/16 - 14	L0105110.5012
	1/2 - 13	L0105110.5013
	9/16 - 12	L0105110.5014
	5/8 - 11	L0105110.5015
	3/4 - 10	L0105110.5016
1" - 8	L0105110.5018	

UNF – TIN COATED

	Size - TPI	EDP No.
3B Tolerance	#4 - 48	L0105110.5037
	#6 - 40	L0105110.5039
	#8 - 36	L0105110.5040
	#10 - 32	L0105110.5041
	#12 - 28	L0105110.5042
	1/4 - 28	L0105110.5043
	5/16 - 24	L0105110.5044
	3/8 - 24	L0105110.5045
	7/16 - 20	L0105110.5046
	1/2 - 20	L0105110.5047
	9/16 - 18	L0105110.5048
	5/8 - 18	L0105110.5049
	3/4 - 16	L0105110.5050
1" - 12	L0105110.5052	

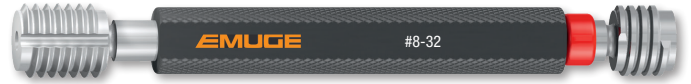
Left-Hand Taps and Go/No-Go Thread Plug Gages



Spiral Flute • GLT-1 Coating



Spiral Point • GLT-1 Coating



UNC – LEFT-HAND TAPS

	Size - TPI	Spiral Flute EDP No.	Spiral Point EDP No.
3B Tolerance	#4 - 40	BU50C460.5003	BU20K560.5003
	#6 - 32	BU50C460.5005	BU20K560.5005
	#8 - 32	BU50C460.5006	BU20K560.5006
	#10 - 24	BU50C460.5007	BU20K560.5007
	#12 - 24	BU50C460.5008	BU20K560.5008
	1/4 - 20	BU50C460.5009	BU20K560.5009
	5/16 - 18	BU50C460.5010	BU20K560.5010
	3/8 - 16	BU50C460.5011	BU20K560.5011
	7/16 - 14	CU50C460.5012	CU20K560.5012
	1/2 - 13	CU50C460.5013	CU20K560.5013
	9/16 - 12	CU50C460.5014	CU20K560.5014
	5/8 - 11	CU50C460.5015	CU20K560.5015
	3/4 - 10	CU50C460.5016	CU20K560.5016
	7/8 - 9	CU50C460.5017	CU20K560.5017
1" - 8	CU50C460.5018	CU20K560.5018	

UNC – LEFT-HAND – GO/NO-GO THREAD PLUG GAGES

	Size - TPI	EDP No.
3B Tolerance	#4 - 40	L0100160.5003
	#6 - 32	L0100160.5005
	#8 - 32	L0100160.5006
	#10 - 24	L0100160.5007
	#12 - 24	L0100160.5008
	1/4 - 20	L0100160.5009
	5/16 - 18	L0100160.5010
	3/8 - 16	L0100160.5011
	7/16 - 14	L0100160.5012
	1/2 - 13	L0100160.5013
	9/16 - 12	L0100160.5014
	5/8 - 11	L0100160.5015
	3/4 - 10	L0100160.5016
	7/8 - 9	L0100160.5017
1" - 8	L0100160.5018	

UNF – LEFT-HAND TAPS

	Size - TPI	Spiral Flute EDP No.	Spiral Point EDP No.
3B Tolerance	#4 - 48	BU50C460.5037	BU20K560.5037
	#6 - 40	BU50C460.5039	BU20K560.5039
	#8 - 36	BU50C460.5040	BU20K560.5040
	#10 - 32	BU50C460.5041	BU20K560.5041
	#12 - 28	BU50C460.5042	BU20K560.5042
	1/4 - 28	BU50C460.5043	BU20K560.5043
	5/16 - 24	BU50C460.5044	BU20K560.5044
	3/8 - 24	BU50C460.5045	BU20K560.5045
	7/16 - 20	CU50C460.5046	CU20K560.5046
	1/2 - 20	CU50C460.5047	CU20K560.5047
	9/16 - 18	CU50C460.5048	CU20K560.5048
	5/8 - 18	CU50C460.5049	CU20K560.5049
	3/4 - 16	CU50C460.5050	CU20K560.5050
	7/8 - 14	CU50C460.5051	CU20K560.5051
1" - 12	CU50C460.5052	CU20K560.5052	

UNF – LEFT-HAND – GO/NO-GO THREAD PLUG GAGES

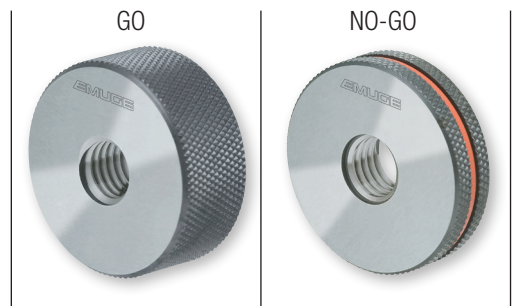
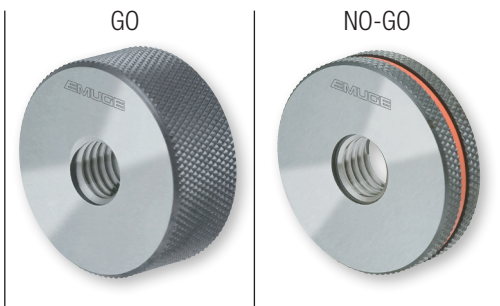
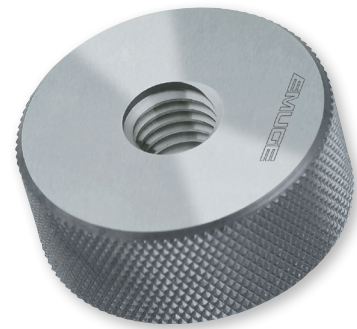
	Size - TPI	EDP No.
3B Tolerance	#4 - 48	L0100160.5037
	#6 - 40	L0100160.5039
	#8 - 36	L0100160.5040
	#10 - 32	L0100160.5041
	#12 - 28	L0100160.5042
	1/4 - 28	L0100160.5043
	5/16 - 24	L0100160.5044
	3/8 - 24	L0100160.5045
	7/16 - 20	L0100160.5046
	1/2 - 20	L0100160.5047
	9/16 - 18	L0100160.5048
	5/8 - 18	L0100160.5049
	3/4 - 16	L0100160.5050
	7/8 - 14	L0100160.5051
1" - 12	L0100160.5052	

UNC and UNF 2A Ring Gages

UNC / UNF ring gages are designed to inspect external pitch diameters. All ring gages have Certificate of Accuracy documentation.*

Features:

- Gage dimensions according to ANSI / ASME B1.2
- 2A tolerance
- GO and NO-GO ring gages
- NO-GO gage is clearly marked with a red ring
- Manufactured with hardened tool steel for durability
- Knurled circumference for maximum gripping ability and safety
- * • Short Form Certificate is furnished at no additional charge
- * • Long Form Certificate is available upon request



UNC

	Size - TPI**	GO RING GAGES EDP No.	NO-GO RING GAGES EDP No.
2A Tolerance	#2 - 56	L0200500.5001	L0300500.5001
	#4 - 40	L0200500.5003	L0300500.5003
	#6 - 32	L0200500.5005	L0300500.5005
	#8 - 32	L0200500.5006	L0300500.5006
	#10 - 24	L0200500.5007	L0300500.5007
	1/4 - 20	L0200500.5009	L0300500.5009
	5/16 - 18	L0200500.5010	L0300500.5010
	3/8 - 16	L0200500.5011	L0300500.5011
	7/16 - 14	L0200500.5012	L0300500.5012
	1/2 - 13	L0200500.5013	L0300500.5013
	9/16 - 12	L0200500.5014	L0300500.5014
	5/8 - 11	L0200500.5015	L0300500.5015
	3/4 - 10	L0200500.5016	L0300500.5016
	7/8 - 9	L0200500.5017	L0300500.5017
	1" - 8	L0200500.5018	L0300500.5018
	1 1/4 - 7	L0200500.5020	L0300500.5020
	1 3/8 - 6	L0200500.5021	L0300500.5021
	1 1/2 - 6	L0200500.5022	L0300500.5022
2" - 4 1/2	L0200500.5024	L0300500.5024	

UNF

	Size - TPI**	GO RING GAGES EDP No.	NO-GO RING GAGES EDP No.
2A Tolerance	#0 - 80	L0200500.5033	L0300500.5033
	#2 - 64	L0200500.5035	L0300500.5035
	#4 - 48	L0200500.5037	L0300500.5037
	#6 - 40	L0200500.5039	L0300500.5039
	#8 - 36	L0200500.5040	L0300500.5040
	#10 - 32	L0200500.5041	L0300500.5041
	1/4 - 28	L0200500.5043	L0300500.5043
	5/16 - 24	L0200500.5044	L0300500.5044
	3/8 - 24	L0200500.5045	L0300500.5045
	7/16 - 20	L0200500.5046	L0300500.5046
	1/2 - 20	L0200500.5047	L0300500.5047
	5/8 - 18	L0200500.5049	L0300500.5049
	3/4 - 16	L0200500.5050	L0200500.5050
	7/8 - 14	L0200500.5051	L0300500.5051
	1" - 12	L0200500.5052	L0300500.5052
	1 1/8 - 12	L0200500.5053	L0300500.5053
	1 1/4 - 12	L0200500.5054	L0300500.5054
	1 3/8 - 12	L0200500.5055	L0300500.5055
1 1/2 - 12	L0200500.5056	L0300500.5056	

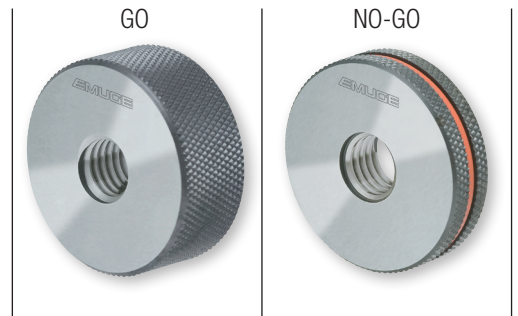
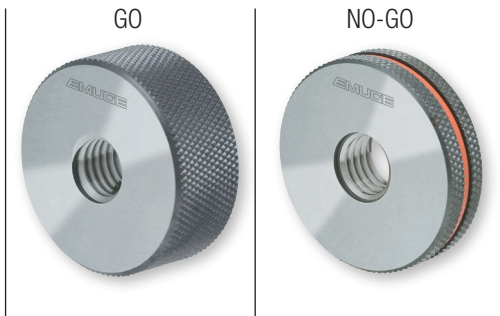
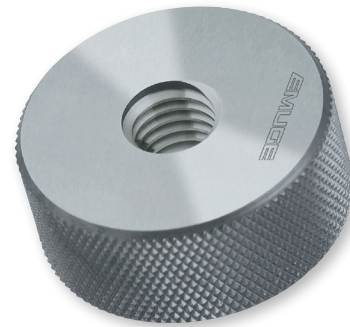
**Additional sizes available upon request. Contact EMUGE at 800-323-3013 or visit www.emuge.com

M and MF 6g Ring Gages

M / MF ring gages are designed to inspect external pitch diameters. All ring gages have Certificate of Accuracy documentation.*

Features:

- Gage dimensions according to DIN ISO 1502
- 6g tolerance
- GO and NO-GO ring gages
- NO-GO gage is clearly marked with a red ring
- Manufactured with hardened tool steel for durability
- Knurled circumference for maximum gripping ability and safety
- * Short Form Certificate is furnished at no additional charge
- * Long Form Certificate is available upon request



METRIC / DIN

	Size x Pitch**	GO RING GAGES EDP No.	NO-GO RING GAGES EDP No.
6g Tolerance	M2 x .4	L0200500.0020	L0300500.0020
	M2.5 x .45	L0200500.0025	L0300500.0025
	M3 x .5	L0200500.0030	L0300500.0030
	M4 x .7	L0200500.0040	L0300500.0040
	M5 x .8	L0200500.0050	L0300500.0050
	M6 x 1	L0200500.0060	L0300500.0060
	M8 x 1.25	L0200500.0080	L0300500.0080
	M10 x 1.5	L0200500.0100	L0300500.0100
	M12 x 1.75	L0200500.0112	L0300500.0112
	M14 x 2	L0200500.0114	L0300500.0114
	M16 x 2	L0200500.0116	L0300500.0116
	M18 x 2.5	L0200500.0118	L0300500.0118
	M20 x 2.5	L0200500.0120	L0300500.0120
	M24 x 3	L0200500.0124	L0300500.0124
	M30 x 3.5	L0200500.0130	L0300500.0130
	M36 X 4	L0200500.0136	L0300500.0136
	M42 X 4.5	L0200500.0142	L0300500.0142
	M56 X 5.5	L0200500.0156	L0300500.0156
M68 X 6	L0200500.0168	L0300500.0168	

METRIC FINE / DIN

	Size x Pitch**	GO RING GAGES EDP No.	NO-GO RING GAGES EDP No.
6g Tolerance	M8 x 1	L0200500.0251	L0300500.0251
	M10 x 1	L0200500.0276	L0300500.0276
	M10 x 1.25	L0200500.0277	L0300500.0277
	M12 x 1	L0200500.0301	L0300500.0301
	M12 x 1.25	L0200500.0302	L0300500.0302
	M12 x 1.5	L0200500.0303	L0300500.0303
	M14 x 1	L0200500.0329	L0300500.0329
	M14 x 1.25	L0200500.0330	L0300500.0330
	M14 x 1.5	L0200500.0331	L0300500.0331
	M16 x 1	L0200500.0357	L0300500.0357
	M16 x 1.5	L0200500.0359	L0300500.0359
	M20 x 1	L0200500.0420	L0300500.0420
	M20 x 1.5	L0200500.0422	L0300500.0422
	M24 x 1	L0200500.0450	L0300500.0450
	M24 x 1.5	L0200500.0452	L0300500.0452
	M30 X 1	L0200500.0488	L0300500.0488
	M36 X 2	L0200500.0533	L0300500.0533
	M42 X 1.5	L0200500.0574	L0300500.0574
M48 X 1	L0200500.0614	L0300500.0614	

**Additional sizes available upon request. Contact EMUGE at 800-323-3013 or visit www.emuge.com

Thread Depth Plug Gages

Analog thread depth gages permit gaging and measuring of threads in one single step. These gages are used in components with identical thread dimensions but different thread depths as well as for setting up a thread depth for any kind of internal thread production.

The GT-GR-LD is a manually operated gage for gaging threads and their depths in one single step.

- Reduction of gaging time by approximately 50%
- Offered in various thread styles and sizes
- Easily adjustable
- Gaged to a resolution of .05" (0.5 mm)



4 x D • Manual • GT-GR-LD Series

UNC – FRACTIONAL INCH MEASURING SCALE

	Thread Size	EDP No.
2B Tolerance	#1 - 64	L1080100.5000
	#2 - 56	L1080100.5001
	#3 - 48	L1080100.5002
	#4 - 40	L1080100.5003
	#5 - 40	L1080100.5004
	#6 - 32	L1080100.5005
	#8 - 32	L1080100.5006
	#10 - 24	L1080100.5007
	#12 - 24	L1080100.5008
	1/4 - 20	L1080100.5009
	5/16 - 18	L1080100.5010
	3/8 - 16	L1080100.5011
	7/16 - 14	L1080100.5012
	1/2 - 13	L1080100.5013
	9/16 - 12	L1080100.5014
5/8 - 11	L1080100.5015	
3/4 - 10	L1080100.5016	
7/8 - 9	L1080100.5017	

UNF – FRACTIONAL INCH MEASURING SCALE

	Thread Size	EDP No.
2B Tolerance	#1 - 72	L1080100.5034
	#2 - 64	L1080100.5035
	#3 - 56	L1080100.5036
	#4 - 48	L1080100.5037
	#5 - 44	L1080100.5038
	#6 - 40	L1080100.5039
	#8 - 36	L1080100.5040
	#10 - 32	L1080100.5041
	#12 - 28	L1080100.5042
	1/4 - 28	L1080100.5043
	5/16 - 24	L1080100.5044
	3/8 - 24	L1080100.5045
	7/16 - 20	L1080100.5046
	1/2 - 20	L1080100.5047
	9/16 - 18	L1080100.5048
5/8 - 18	L1080100.5049	
3/4 - 16	L1080100.5050	
7/8 - 14	L1080100.5051	

Thread Depth Plug Gages

UNC – METRIC MEASURING SCALE

	Thread Size	EDP No.
2B Tolerance	#1 - 64	L1010100.5000
	#2 - 56	L1010100.5001
	#3 - 48	L1010100.5002
	#4 - 40	L1010100.5003
	#5 - 40	L1010100.5004
	#6 - 32	L1010100.5005
	#8 - 32	L1010100.5006
	#10 - 24	L1010100.5007
	#12 - 24	L1010100.5008
	1/4 - 20	L1010100.5009
	5/16 - 18	L1010100.5010
	3/8 - 16	L1010100.5011
	7/16 - 14	L1010100.5012
	1/2 - 13	L1010100.5013
	9/16 - 12	L1010100.5014
	5/8 - 11	L1010100.5015
3/4 - 10	L1010100.5016	
7/8 - 9	L1010100.5017	

UNF – METRIC MEASURING SCALE

	Thread Size	EDP No.
2B Tolerance	#3 - 56	L1010100.5036
	#4 - 48	L1010100.5037
	#5 - 44	L1010100.5038
	#6 - 40	L1010100.5039
	#8 - 36	L1010100.5040
	#10 - 32	L1010100.5041
	#12 - 28	L1010100.5042
	1/4 - 28	L1010100.5043
	5/16 - 24	L1010100.5044
	3/8 - 24	L1010100.5045
	7/16 - 20	L1010100.5046
	1/2 - 20	L1010100.5047
	9/16 - 18	L1010100.5048
	5/8 - 18	L1010100.5049
3/4 - 16	L1010100.5050	
7/8 - 14	L1010100.5051	



METRIC – METRIC MEASURING SCALE

	Thread Size	EDP No.
6H Tolerance	M 2 x 0.4	L1010100.0020
	M 3 x 0.5	L1010100.0030
	M 4 x 0.7	L1010100.0040
	M 5 x 0.8	L1010100.0050
	M 6 x 1	L1010100.0060
	M 8 x 1.25	L1010100.0080
	M 10 x 1.5	L1010100.0100
	M 12 x 1.75	L1010100.0112
	M 14 x 2	L1010100.0114
	M 16 x 2	L1010100.0116
	M 18 x 2.5	L1010100.0118
	M 20 x 2.5	L1010100.0120
	M 22 x 2.5	L1010100.0122
	M 24 x 3	L1010100.0124



Gage Certification / Accuracy

EMUGE Gage certification is performed by the accredited calibration service “DECOM UGK GmbH” calibration laboratory which is located within EMUGE-FRANKEN’s manufacturing facility in Lauf, Germany.

Our legally independent laboratory carries out your measurement tasks competently and reliably.

Under the motto “**Quality is our standard, service is our strength**”, we offer complete testing and calibration services from a single source.

Our calibration certificates are internationally recognized documents with traceability. Short Form Certificates of Accuracy are furnished with each gage and Long Form Certificates are available upon request.



Scan to
learn
more.



EMUGE-FRANKEN USA
1800 Century Drive, West Boylston, MA 01583
800-991-4225

EMUGE-FRANKEN has been the product technology and performance leader in their field for over 100 years. EMUGE-FRANKEN manufactures an extensive line of taps, drills, thread mills, end mills, toolholders, clamping devices and other rotary cutting tools, over 40,000 items sold through distributors worldwide.