



MERLIN

Designed for simple measuring applications up to 16 sensors/measurements and basic statistic analysis, Merlin represents a new concept of gage computer using the same technologies created for PDA and portable electronics, for data collection from traditional or wireless measuring devices. Embedded technology allows: small dimensions (the whole system footprint is smaller than an A4 sheet of paper), fanless architecture and no moving parts (flash disk storage media), assuring the highest level of system reliability. Merlin gage software based on Microsoft® Windows® CE 5.0 guarantees a friendly and easy to use operator interface. Its touch-screen designed human interface allows to program and acquire measures without any additional input/command device.

ELECTRONIC DISPLAY UNITS

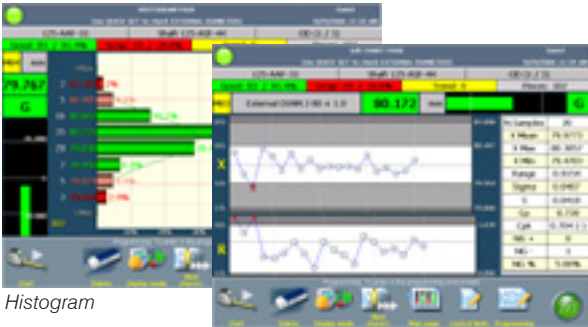
MAIN HARDWARE CHARACTERISTICS

CASE	Robust industrial-grade plastic case
PROTECTION	IP 65 (on front panel)
TOUCH SCREEN	4 wire analog-resistive
LCD DISPLAY TYPE	8.4" color TFT - supporting SVGA resolution (800x600)
STORAGE MEDIA	Internal removable compact flash
ETHERNET LAN	10/100Mbps RJ45 connector
USB PORTS	1 internal to support a <i>Bluetooth</i> ® adapter (OPTION) 4 Host + 1 Device
SERIAL PORT	1 x RS232C
BENCH-TOP SUPPORT	Reclinable (VESA compliant for pivoting-arm solutions)
DIMENSIONS	230 x 180 x 45 mm (9" x 7" x 1.8") L x H x D





Multiple bargraph display



Histogram

Quality Control Chart



Virtual keyboard

Programming interface

MEASUREMENTS

- Up to 16 sensors connectable via USB, RS232 or Bluetooth® wireless technology.
- Data collection from Marposs Easy Box™, Gage Box™, Digi Crown™, M1 Wave™ and third-party serial devices.
- Measurement capability up to 16 characteristics.
- Multiple measurement display with numeric and graphical layout.
- Acquisition command through external signal (footswitch, push buttons) or touch-screen.

STATISTICAL PROCESS CONTROL

- Statistical Analysis with graphic display (Histogram, Control Charts, Value Chart...) and numeric summary (Cp, Cpk, Spread, Average...).
- Data segregation (by machine, product batch, analysis purposes).
- Part counters.
- Local data storage on internal memory and/or removable USB memory devices.
- Remote data storage through Ethernet LAN.
- Data storage format: .DFQ (Q-DAS® qs-STAT®) and .CSV (Microsoft® Excel Comma Separated Values).

CONFIGURATION AND PROGRAMMING

- Multi-language support for European and Asian languages: English, Italian, German, French, Spanish, Brazilian Portuguese, Swedish, Japanese, Chinese. Other language versions available upon request.
- Programming interface designed to be used with touch-screen.
- Password protected multi-user management.

HOW TO ORDER

DESCRIPTION	ORDER CODE
MERLIN (Western-Europe operating system) / WITHOUT USB internal port	830MEBBXX
MERLIN (Western-Europe operating system) / WITH USB internal port	830MEABBXX
MERLIN (Japanese operating system) / WITHOUT USB internal port	830MEDBBXX
MERLIN (Japanese operating system) / WITH USB internal port	830MECBBXX

For a full list of address locations, please consult the Marposs official website: www.marposs.com - www.testar.com

D6D00500G0 - Edition 12/2006 - Specifications are subject to modifications
© Copyright 2006 MARPOSS S.p.A. (Italy) - All rights reserved.

MARPOSS, ® and Marposs product names/signs mentioned or shown herein are registered trademarks or trademarks of Marposs in the United States and other countries. The rights, if any, of third parties on trademarks or registered trademarks mentioned in the present publication are acknowledged to the respective owners.

Marposs has an integrated system to manage the Company quality, the environment and safety, attested by ISO 9001, ISO 14001, OHSAS 18001 and QS9000 T&E certifications. Marposs has further been qualified EAQF 94 and has obtained the Q1-Award.

