



UNIVERSAL MEASURING ARMSET

- Universal measuring armset with axial movement for inspection of internal and external diameters and distances on multigauging devices.
It is available in two versions:

- as complete single measuring unit [measuring range ± 1 mm (.04")] with built-in full-bridge (LVDT) or half-bridge (HBT) transducer also compatible with any electronics already present on the market.
- as simple mechanical transmission, to be used with other meas-

uring gauges with clamping diameter 8 mm or 3/8", such as TESTAR Red Crown™ pencil probes, Quick probe™, Quick Read™ and Quick Digit™.

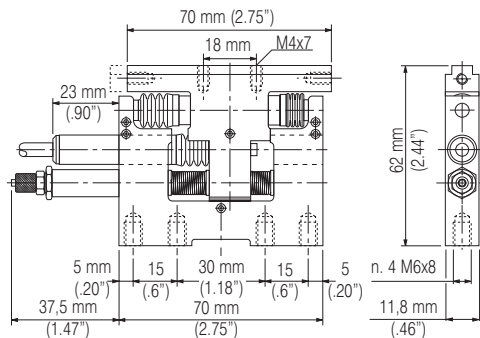
- Each version can be also equipped with pneumatic actuation to facilitate part loading/unloading in the measuring station.
- Contact support retooling range of 20 mm.
- Wide range of measuring arms and contacts, which allows up to 5 external diameter measurements on a length of only 8 mm.
- Easy to apply and to set-up, it is particularly suitable as a component of the Quick Set™ for Post-Process applications with robot part loading and unloading.

TECHNICAL SPECIFICATIONS	QBF100 - LVDT	QBH100 - HBT	QB600
MEASURING RANGE	± 1 mm (.04")	± 1 mm (.04")	According to measuring probe
TOTAL STROKE	6 mm (.24")	6 mm (.24")	6 mm (.24")
PRETRAVEL TO ELECTRICAL ZERO	1.1 - 1.2 mm (.04" - .05") retoolable	1.1 - 1.2 mm (.04" - .05") retoolable	According to measuring probe
LINEARITY ERROR	$< 5 \mu\text{m}$ (0.25%)	$< 5 \mu\text{m}$ (0.25%)	According to measuring probe
REPEATABILITY	$< 0.5 \mu\text{m}$	$< 0.5 \mu\text{m}$	$< 0.5 \mu\text{m}$
THERMAL DRIFT	$< 0.25 \mu\text{m}/^\circ\text{C}$	$< 0.25 \mu\text{m}/^\circ\text{C}$	$< 0.25 \mu\text{m}/^\circ\text{C}$
TEMPERATURE RANGE	-10/+65 °C	-10/+65 °C	-10/+65 °C
MEASURING FORCE	1 N \pm 20%	1 N \pm 20%	1.70 N \pm 20% (without measuring probe)
GUIDE	Ball bearing	Ball bearing	Ball bearing
CABLE LENGTH	2 m	2 m	According to measuring probe
STANDARD CONNECTOR	Lumberg SV50/6	Lumberg SV50/6	According to measuring probe
PROTECTION LEVEL (*)	IP65	IP65	IP65
END-STROKE ADJUSTMENT	Up to 3 mm (.12")	Up to 3 mm (.12")	Up to 3 mm (.12")
OPERATION PRESSURE	3 - 6 bar	3 - 6 bar	3 - 6 bar

(*) Relevant to ball bearing guide and built-in transducer

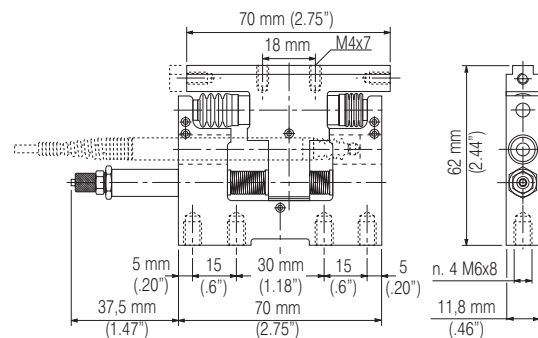
QBF 100 • QBH 100

MEASURING UNIT: BUILT-IN TRANSDUCER VERSION AVAILABLE WITH PRETRAVEL ADJUSTMENT OR PNEUMATIC CYLINDER

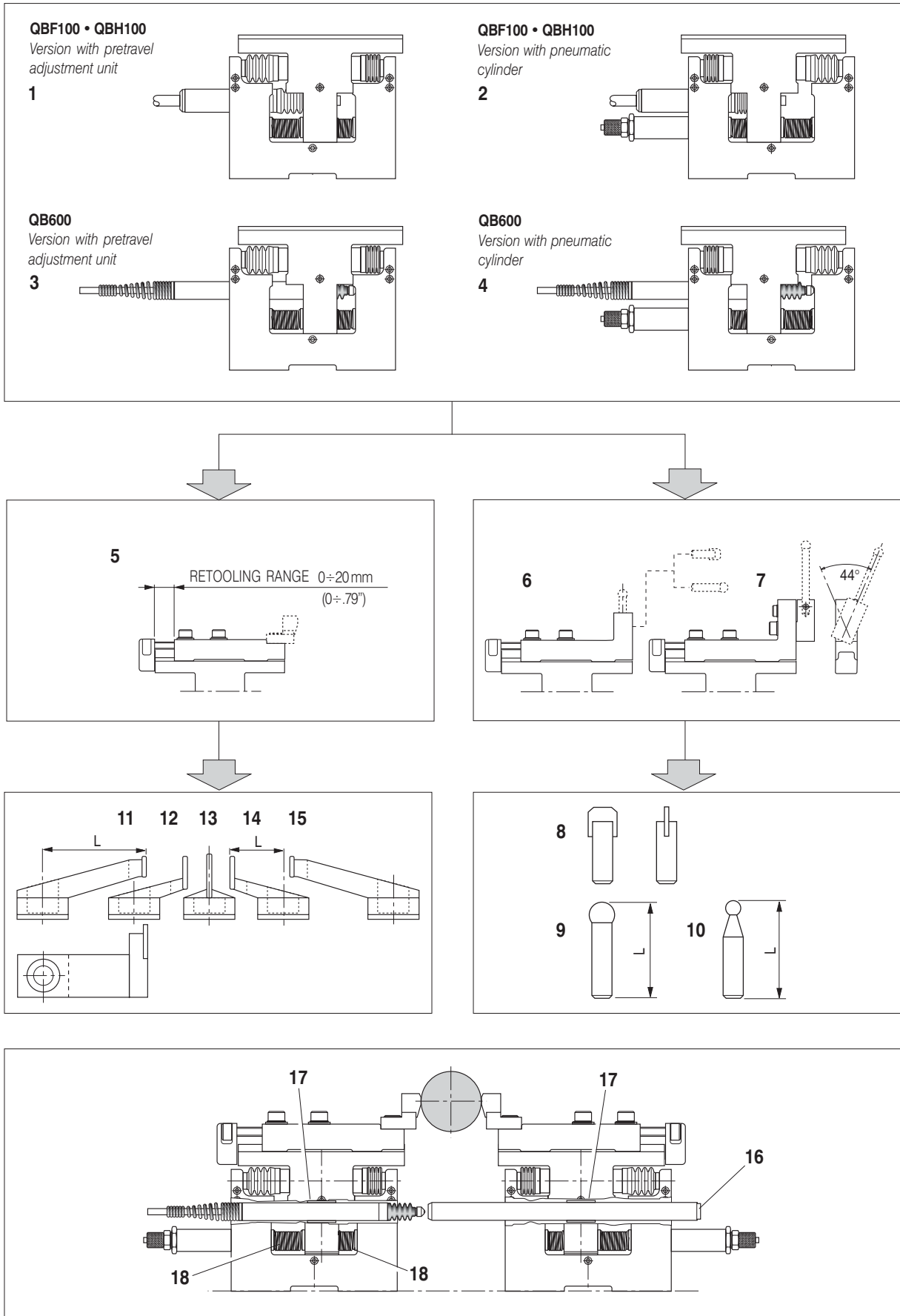


QB 600

MEASURING TRANSMISSION: PENCIL PROBE \varnothing 8 mm - 3/8" VERSION AVAILABLE WITH PRETRAVEL ADJUSTMENT OR PNEUMATIC CYLINDER



COMPONENTS AND ACCESSORIES



HOW TO ORDER

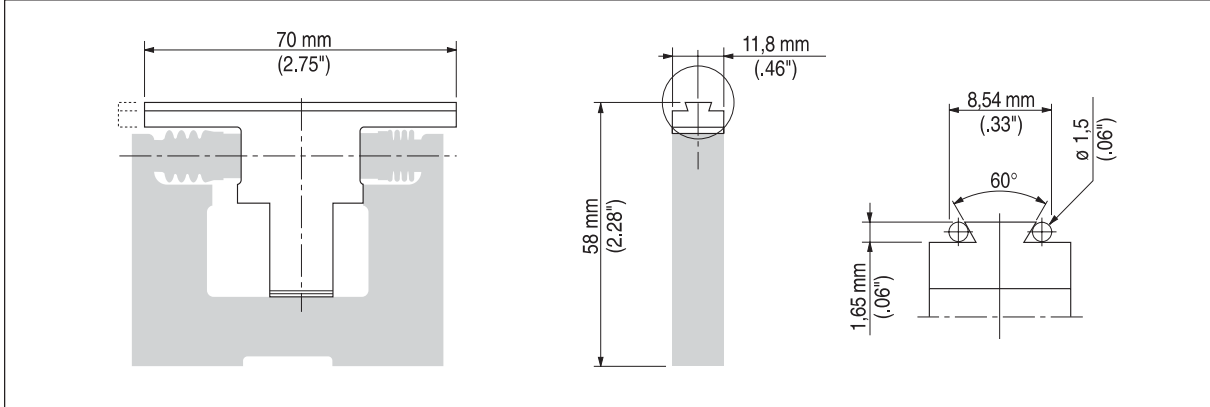
REF.	DESCRIPTION	ORDER CODE
1	QBF100 LVDT (FULL-BRIDGE) ± 1 mm WITH PRETRAVEL ADJUSTMENT UNIT	3419883300
	QBH100 HBT (HALF-BRIDGE) ± 1 mm WITH PRETRAVEL ADJUSTMENT UNIT	3419883350
	QBH100 HBT (HALF-BRIDGE) ± 1 mm WITH PRETRAVEL ADJUSTMENT UNIT - DOVETAIL COMPATIBLE WITH CONTACTS OF TESA	3419883360
2	QBF100 LVDT (FULL-BRIDGE) ± 1 mm WITH PNEUMATIC CYLINDER	3419883305
	QBH100 HBT (HALF-BRIDGE) ± 1 mm WITH PNEUMATIC CYLINDER	3419883355
	QBH100 HBT (HALF-BRIDGE) ± 1 mm WITH PNEUMATIC CYLINDER - DOVETAIL COMPATIBLE WITH CONTACTS OF TESA	3419883365
3	QB600 (TRANSMISSION ONLY) WITH PRETRAVEL ADJUSTMENT UNIT	A 3019883001
4	QB600 (TRANSMISSION ONLY) WITH PNEUMATIC CYLINDER	A 3019883002
5	SUPPORT FOR OFFSET CUT CONTACT 11, 12, 13, 14, 15 , M4 THREAD [RETOOLING RANGE 0-20 mm (0 -.79")]	2019883060
6	SUPPORT FOR SIMPLE CUT CONTACT 8 OR SPHERICAL CONTACT 9, 10 [RETOOLING RANGE 0-20 mm (0 -.79")]	2019883050
7	CONTACT SUPPORT WITH SIDE ROTATION [RETOOLING RANGE 0-20 mm (0.79")]	2019883550
8	SIMPLE CUT CONTACT	3391988325
9	SPHERICAL CONTACT L = 20 mm, DIAMETER 5 mm	3391988301
	SPHERICAL CONTACT L = 40 mm, DIAMETER 5 mm	3391988302
	SPHERICAL CONTACT L = 60 mm, DIAMETER 5 mm	3391988303
10	SPHERICAL CONTACT L = 20 mm, DIAMETER 3 mm	3391988310
	SPHERICAL CONTACT L = 40 mm, DIAMETER 3 mm	3391988311
	SPHERICAL CONTACT L = 60 mm, DIAMETER 3 mm	3391988312
11	LEFT OFF-SET CUT CONTACT L = 24 mm	3391988336
12	LEFT OFF-SET CUT CONTACT L = 12 mm	3391988335
13	OFF-SET CUT CONTACT	3391988330
14	RIGHT OFF-SET CUT CONTACT L = 12 mm	3391988337
15	RIGHT OFF-SET CUT CONTACT L = 24 mm	3391988338
16	MECHANICAL REFERENCE SHAFT (EXTERNAL DIA. 8 mm, L = 120 mm)	1119883071
17	ADAPTING BUSHING FOR PENCIL PROBES DIA. 8 mm	B 1019826001
	ADAPTING BUSHING FOR PENCIL PROBES DIA. 3/8"	B 1019883072
18	SPRING 0.63N (BLUE)	1019883035
	SPRING 1.7N (BLACK)	1019883034
	SPRING 2N (GREEN)	1019883031
	SPRING 2.6N (RED)	1019883032
	SPRING 4N (YELLOW)	1019883036
	EXTENSION CABLE LVDT/HBT L = 2 m	6735932015
	EXTENSION CABLE LVDT/HBT L = 5 m	6735932016
	EXTENSION CABLE LVDT/HBT L = 10 m	6735932017
	USER MANUAL QBF100 / QBH100	C D4340013X1
	USER MANUAL QB600	C D4340014X1

NOTES

- A** • The code is not comprehensive of the pencil probe, for which a separate order is necessary.
- B** • To be always used with QB600, to fix the pencil probe or the mechanical reference shaft (ref. 16)
- C** • X = I (Italian); U (English); D (German); F (French); E (Spanish)

SPECIAL VERSION WITH DOVETAIL COMPATIBLE WITH CONTACTS OF TESA

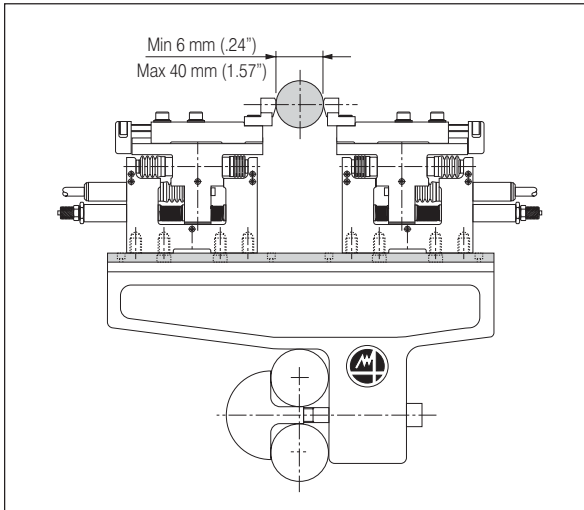
Available on request. Technical specifications same as above.



INTERFACE FOR QUICK SET BENCH GAUGE

To integrate the Quick Block with the Quick Set bench gauge, a support bracket L = 200 mm with interface is available for measuring diameters up to 40 mm (1.57").

For measuring bigger diameters [up to 90 mm (3.54")] a mounting interface is used with a bracket L = 250 mm. The measure height of the contact, with respect to the bracket, is the same of the Quick Set standard transmissions.



DESCRIPTION	ORDER CODE
SUPPORT BRACKET L = 200 mm FOR DIAMETERS UP TO 40 mm, WITH INTERFACE FOR TWO QUICK BLOCKS	3024017100
SUPPORT BRACKET L = 250 mm FOR DIAMETERS UP TO 90 mm (WITHOUT INTERFACE FOR QUICK BLOCK)	3024018100
MOUNTING INTERFACE FOR ONE QUICK BLOCK FOR SUPPORT BRACKET L = 250 mm	2924018110

For a full list of address locations, please consult the Marposs official website

D6Q00602G0 - Edition 10/2007 - Specifications are subject to modifications
© Copyright 2007 MARPOSS S.p.A. (Italy) - All rights reserved.

MARPOSS, ® and Marposs product names/signs mentioned or shown herein are registered trademarks or trademarks of Marposs in the United States and other countries. The rights, if any, of third parties on trademarks or registered trademarks mentioned in the present publication are acknowledged to the respective owners.

Marposs has an integrated system to manage the Company quality, the environment and safety, attested by ISO 9001, ISO 14001 and OHSAS 18001 certifications. Marposs has further been qualified EAQF 94 and has obtained the Q1-Award.