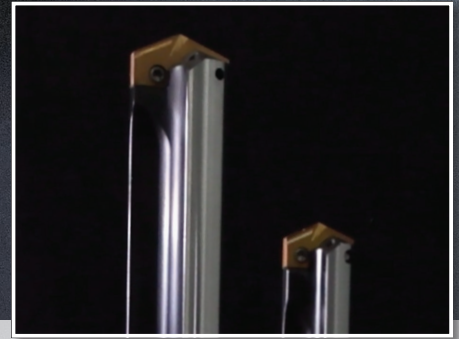


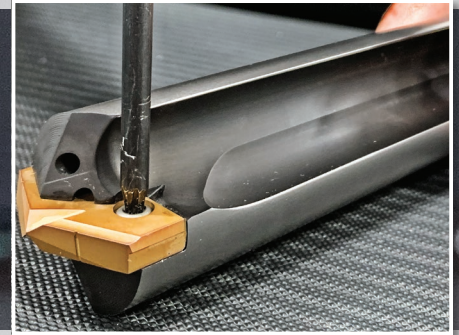
**NEW**

The **best** just got **better**.



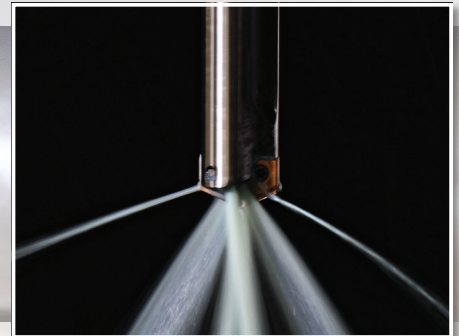
**NEW** HOLDER DESIGN

Optimized flute design for **increased** chip evacuation



**NEW** INSERT DESIGN

ISO specific geometries with a new point design to **simplify** your insert choices



**NEW** COOLANT DESIGN

Proprietary coolant outlet configuration provides **superior** performance even in **low-coolant** applications



**T-A Pro**®

TOOLING  
**NEW**  
SOLUTIONS

**BUY 6 CARBIDE INSERTS  
GET YOUR HOLDER  
FREE\***

Ends 6/30/2022

\* Inserts must be P,K, or N geometry and the same series as the holder

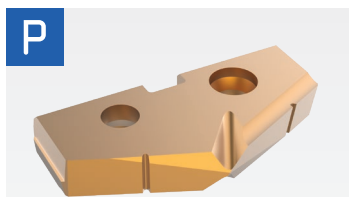
**AHB**  
TOOLING & MACHINERY

COMPLETE  
METALWORKING  
SOLUTIONS  
(800) 991-4225  
www.ahbinc.com  
ISO Certified  
customerservice@ahbinc.com



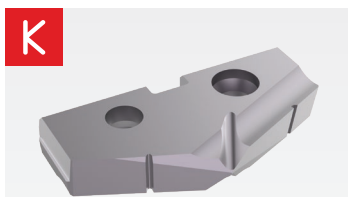


## REDESIGNED INSERTS Ø 0.437" - 1.882" (11.1mm - 47.8mm)



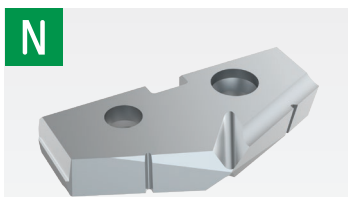
### STEELS

- Designed to provide increased penetration rates and tool life in steel applications
- Superior geometry and edge provides excellent chip control
- Allied's multi-layer AM300 coating increases heat resistance and improves tool life



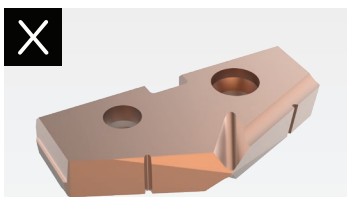
### CAST IRONS

- Uniquely designed for cast/nodular iron applications
- Geometry developed for maximum tool life, reduced exit burr, and improved hole finish
- Allied's multi-layer TiAlN coating provides increased abrasion resistance and tool life



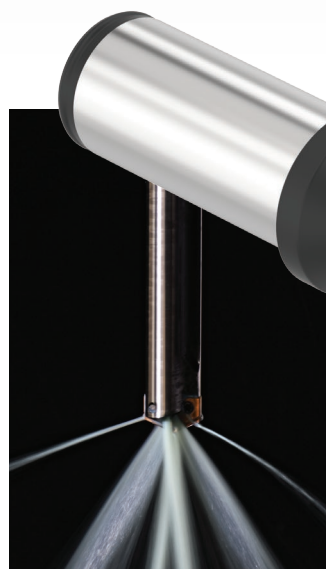
### NON-FERROUS

- Designed for application in aluminum, brass, and copper
- The geometry yields excellent chip control in these softer materials
- TiCN coating gives the versatility to run in a variety of materials while reducing buildup



### HIGH-SPEED STEEL

- Improved geometry for excellent chip control in all materials
- Long tool life and high-process security for the most challenging applications
- Allied's multi-layer AM200 coating combines excellent heat resistance and high lubricity for wide application use



## REDESIGNED HOLDERS

NEW flute design for increased chip evacuation



NEW coolant configuration

NEW inserts and point geometry



## Lengths from 1xD to 15xD

Stocked in 1xD, 3xD, 5xD, 7xD, 10xD, 12xD & 15xD



**Note:** For optimal performance, T-A Pro inserts should be used with T-A Pro holders.



**COMPLETE METALWORKING SOLUTIONS**  
 (800) 991-4225  
 www.ahbinc.com  
 ISO Certified  
 customerservice@ahbinc.com

Contact us about a **Guaranteed Test** for a no-risk way to increase production and improve your process!

Contact your local Field Sales Engineer for details on our Guaranteed Tests.

**DAVE FLEMING**

(330)602-3964  
dfleming@alliedmachine.com

**GORDON MASSON**

(248)249-5886  
gmasson@alliedmachine.com

1.330.343.4283

120 Deeds Drive  
Dover, OH 44622  
United States  
www.alliedmachine.com

Allied Machine offers expert engineering support. Whether you need a quote, a test, or an application solution, a highly skilled and trained engineer is standing by, ready to help.  
ext: 7611 | email: [appeng@alliedmachine.com](mailto:appeng@alliedmachine.com)



**ALLIED MACHINE & ENGINEERING**

Copyright © 2022 Allied Machine and Engineering Corp. – All rights reserved.