

SUMMER OF SAVINGS!



True 90° Shoulder Milling ISTN16

Shoulder face mill with double negative geometry

- ▶ DOUBLE-SIDED INSERTS
6 total edges
- ▶ 1.0" - 5.0" CUTTER BODIES
- ▶ 90° POCKET
with precise ground insert

APPLICATIONS

- Shallow square shoulders
- Milling keyways & slots
- Face milling
- Plunge milling

ISTN16

Purchase 30 inserts and a body up to 3"

Save up to **70%** on select indexable milling packages



AHB

TOOLING & MACHINERY

COMPLETE METALWORKING SOLUTIONS

(800) 991-4225

ISO Certified

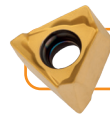
www.ahbinc.com

customerservice@ahbinc.com



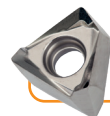
TNGX-F

- Low to medium carbon content steel
- High positive geometry
- Light to medium machining



TNGX-M

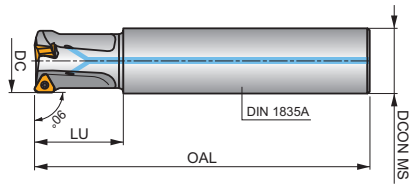
- Carbon steel, stainless steels and cast iron
- High positive geometry
- Light to medium machining



TNGX-FA

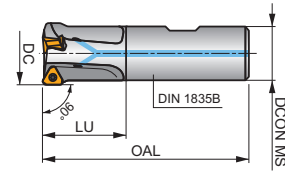
- Suited for non ferrous metals
- High positive geometry
- Polished insert face to reduce sticking of the machined material

ISTN16 MILLING PROMOTION



Cylindrical

ISO Code	MID#	DC	OAL	LU	DCON MS	# of Inserts
100A2R130C100-ISTN16-C	8052333	1.000	6.693	1.339	1.000	2
125A2R130C125-ISTN16-C	8021685	1.250	7.677	1.339	1.250	2
125A3R130C125-ISTN16-C	8021687	1.250	7.677	1.339	1.250	3
125A2R315C125-ISTN16-C	8021686	1.250	7.677	3.150	1.250	2

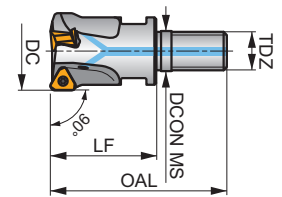


Weldon

ISO Code	MID#	DC	OAL	LU	DCON MS	# of Inserts
100A2R165W100-ISTN16-C	8052334	1.000	3.937	1.654	1.000	2
125A3R165W125-ISTN16-C	8021689	1.250	4.331	1.654	1.250	3
150A4R200W125-ISTN16-C	8021720	1.500	4.724	1.969	1.250	4

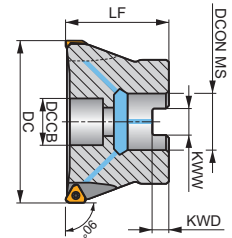
Modular

ISO Code	MID#	DC	OAL	LF	TDZ	DCON MS	# of Inserts
100A2R130M12-ISTN16-C	8052338	1.000	2.165	1.299	M12	.492	2
125A2R169M16-ISTN16-C	8021721	1.250	2.598	1.693	M16	.669	2
125A3R169M16-ISTN16-C	8021722	1.250	2.598	1.693	M16	.669	3
150A3R169M16-ISTN16-C	8021723	1.500	2.598	1.693	M16	.669	3
150A4R169M16-ISTN16-C	8021724	1.500	2.598	1.693	M16	.669	4



Shell

ISO Code	MID#	DC	DCON MS	DCCB	LF	KWW	KWD	# of Inserts
150A04R-IS90TN16-C	8021162	1.500	.500	.409	1.575	.260	.165	3
200A04R-IS90TN16-C	8021163	2.000	.750	.630	1.575	.323	.193	4
200A05R-IS90TN16-C	8021164	2.000	.750	.630	1.575	.323	.193	5
250A04R-IS90TN16-C	8021165	2.500	.750	.630	1.575	.323	.193	4
250A06R-IS90TN16-C	8021166	2.500	.750	.630	1.575	.323	.193	6
300A05R-IS90TN16-C	8021167	3.000	1.000	.827	1.969	.382	.224	5
300A07R-IS90TN16-C	8021168	3.000	1.000	.827	1.969	.382	.224	7
400A06R-IS90TN16-C	8021169	4.000	1.500	1.417	1.969	.634	.382	6
400A08R-IS90TN16-C	8021180	4.000	1.500	1.417	1.969	.634	.382	8
500A09R-IS90TN16-C	8021181	5.000	1.500	1.417	2.480	.634	.382	9



TNGX16

ANSI	P	M	K	N	S	MID#
TNGX 160604SR-F 	M8330	█	█	█		8020443
	M8340	█	█	█		8020444
	8215	█	█	█		8020446
	M6330	█	█	█		8020449
TNGX 160608SR-F 	M8310	█	█	█		8020445
	M8330	█	█	█		8020447
	M8340	█	█	█		8020448
	8215	█	█	█	█	8019943
TNGX 160604SR-M 	M6330	█	█	█		8019947
	M8310	█	█	█		8019944
	M8330	█	█	█	█	8019945
	M8340	█	█	█	█	8019946
TNGX 160608SR-M 	8215	█	█	█	█	8019794
	M6330	█	█	█	█	8019797
	M8310	█	█	█		8019793
	M8330	█	█	█	█	8019795
	M8340	█	█	█	█	8019796
	M8345	█	█	█	█	8019798
M9325	█	█	█		8019799	
M9340	█	█	█	█	8019820	

ANSI	P	M	K	N	S	MID#
TNGX 160612SR-M 	M8330	█	█	█	█	8020755
	M8340	█	█	█	█	8020756
	M8310	█	█	█		8020757
	M8330	█	█	█	█	8020758
TNGX 160616SR-M 	M8340	█	█	█	█	8020759
	HF7				█	8020826
TNGX 160604FR-FA 	M0315				█	8020825
	HF7				█	8020828
TNGX 160608FR-FA 	M0315				█	8020827

Contact your local sales person for application assistance.

Take advantage of this offer use **Promo Code SS** when ordering. Offer is not valid on purchases made by Eshop or EDI Promotion Runs From July 1 to August 31, 2023