

The logo for AHB, with 'A' in blue, 'H' in red, and 'B' in blue, all in a bold, sans-serif font.

**TOOLING & MACHINERY**

**COMPLETE METALWORKING SOLUTIONS**

(800) 991-4225

[www.ahbinc.com](http://www.ahbinc.com)

ISO Certified

[customerservice@ahbinc.com](mailto:customerservice@ahbinc.com)

A large, stylized '60' with a circular arrow around the '0', signifying a 60th anniversary.

*Since 1966*

The KORLOY logo, featuring a blue stylized 'K' icon followed by the word 'KORLOY' in a bold, sans-serif font.

# KORLOY AMERICA PROMOTIONS

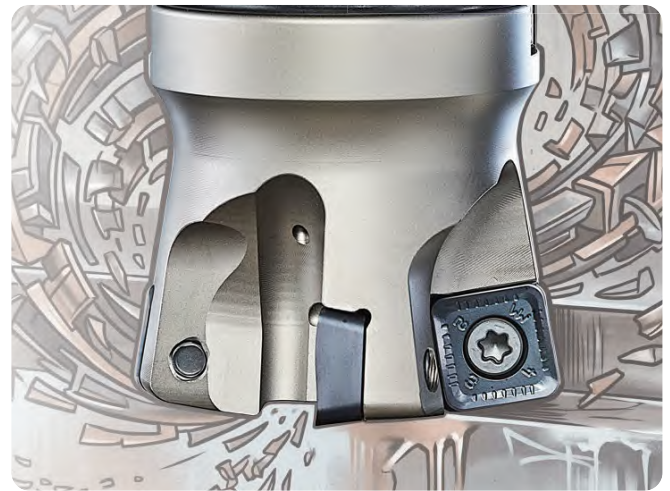
Valid Through September 30th, 2026

# HQM

High rigidity you need for highfeed milling with 4 corner square inserts

Buy 10 Inserts per Pocket  
**GET 1 FREE CUTTER**

Use Code [ PRM26001 ]



## HQMSA-SQ12

► 12 Type

: Ø1.25 - Ø1.50inch

Insert

SQMT120516-MF/ML/MM

SQMW120516



## HQMCA-SQ12

► 12 Type

: Ø2.00 - Ø4.00inch

Insert

SQMT120516-MF/ML/MM

SQMW120516



## HQMCA-SQ14

► 14 Type

: Ø2.00 - Ø4.00inch

Insert

SQMT140520-MF/ML/MM

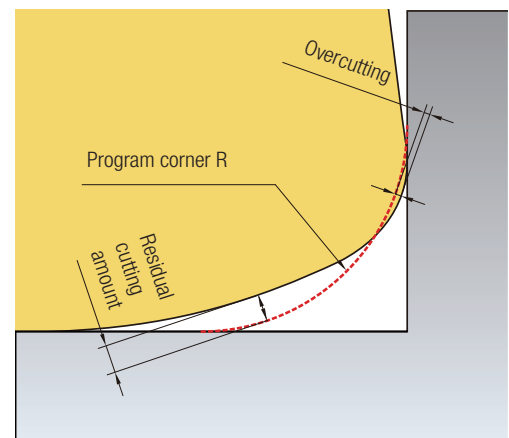
SQMW140520



### Precautions in corner R cutting

Insert	Program corner R	Nose R RE	APMX	Over cut	Uncut
SQMT120516R-MM	0.059	0.063	0.059	0.000	0.059
	0.079			0.000	0.056
	0.118			0.000	0.050
	0.138			0.002	0.046
	0.157			0.007	0.043
	0.177			0.013	0.040
	0.197			0.020	0.037
SQMT140520R-MM	0.059	0.063	0.063	0.000	0.068
	0.118			0.000	0.057
	0.138			0.000	0.054
	0.157			0.001	0.051
	0.177			0.006	0.048
	0.197			0.011	0.044
	0.217			0.018	0.041
	0.236			0.025	0.037

(inch)



----- Program corner R

- When writing CNC programs, entering the appropriate corner radius (R value) for each insert can lead to overcutting and residual cutting amounts in the corner machining areas, as described.
- To prevent overcutting, it is essential to create CNC programs that take the aforementioned overcutting amounts into account.

# HFMD

High feed milling with fine pitch design,  
double sided 4 corners insert for smaller diameter

**Buy 10 Inserts per Pocket**  
**GET 1 FREE CUTTER**

Use Code [ PRM26001 ]



## HFMDSA-LN04

### ► 04 Type

: Ø0.375 - Ø0.75inch

Insert

[LNMX040205R-ML/MM](#)



## HFMDSA-LN06

### ► 06 Type

: Ø0.625 - Ø1.50inch

Insert

[LNMX0603105R-MF/ML/MM](#)



## HFMDCA-LN06

### ► 06 Type

: Ø1.25 - Ø2.50inch

Insert

[LNMX060310R-MF/ML/MM](#)



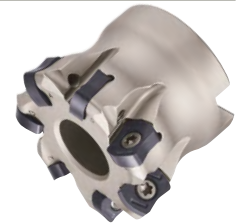
## HFMDCA-LN10

### ► 10 Type

: Ø1.50 - Ø4.00inch

Insert

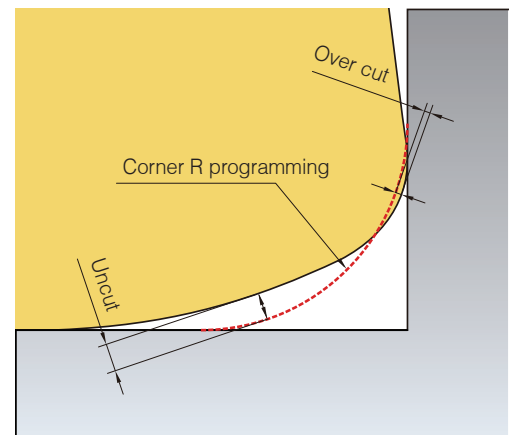
[LNMX100412R-MF/ML/MM](#)



## ► Corner R programming

Insert	Corner R programming	Cutting conditions		Over Cut	Uncut
		Nose R	Max. ap		
LNMX040205R-ML LNMX040205R-MM	R0.031	0.020	0.020	0.000	0.011
	R0.035 (Standard)			0.000	0.009
	R0.039			0.000	0.009
LNMX060310R-ML LNMX060310R-MF LNMX060310R-MM	R0.059	0.039	0.039	0.000	0.016
	R0.063 (Standard)			0.000	0.015
	R0.079			0.002	0.011
LNMX100412R-ML LNMX100412R-MF LNMX100412R-MM	R0.079	0.047	0.059	0.000	0.033
	R0.098 (Standard)			0.000	0.025
	R0.118			0.002	0.020

(inch)



----- Corner R programming

- During usage of CNC program, over cut & uncut would be occurred on the corner processing site if entering the correct program corner R value for each insert
- To prevent overcut, you will need to complete a CNC program considering the above overcut

# HRMD

Want more corners?  
Try 6 corners high feed milling

Buy 10 Inserts per Pocket  
**GET 1 FREE CUTTER**

Use Code [ PRM26001 ]



## HRMDSA06

### ► 06 Type

: Ø0.75 - Ø1.25inch

Insert

[WNMX060312ZNN-MF/ML/MM](#)



## HRMDSA09

### ► 09 Type

: Ø1.00 - Ø1.50inch

Insert

[WNMX09T316ZNN-MF/ML/MM](#)



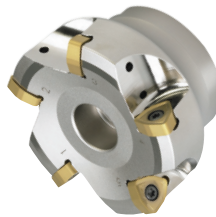
## HRMDCA09

### ► 09 Type

: Ø2.00 - Ø4.00inch

Insert

[WNMX09T316ZNN-MF/ML/MM](#)



## HRMDSA13

### ► 13 Type

: Ø1.25 - Ø1.50inch

Insert

[WNMX130520ZNN-MF/ML/MM](#)



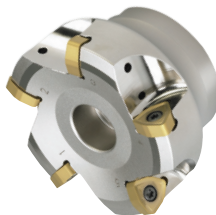
## HRMDCA13

### ► 13 Type

: Ø2.00 - Ø4.00inch

Insert

[WNMX130520ZNN-MF/ML/MM](#)



## HRMDCA16

### ► 16 Type

: Ø3.00 - Ø6.00inch

Insert

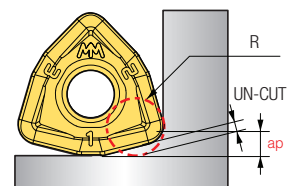
[WNMX160312ZNN-MF/ML/MM](#)



### ► Features of insert

Designation	Cutting conditions		Approx. R (inch)	
	Max.ap(inch)	Max.fz(ipf)	Input. R	Uncut
WNMX060312ZNN-□□	0.04	0.05	0.07	0.015
WNMX09T316ZNN-□□	0.06	0.08	0.10	0.024
WNMX130520ZNN-□□	0.08	0.12	0.12	0.032
WNMX160720ZNN-□□	0.10	0.14	0.14	0.047

\*Information for uncut part by using "Input.R" for CAM program



\* Uncut part can be changed by poor machine conditions or weak clamp of workpiece, etc.

# HFM

Great alternative to solid endmills for small diameter roughing

Buy 10 Inserts per Pocket  
**GET 1 FREE CUTTER**

Use Code [ PRM26001 ]



## HFMSA1000

► 1000 Type

: Ø0.3125 - Ø0.8125 inch

Insert

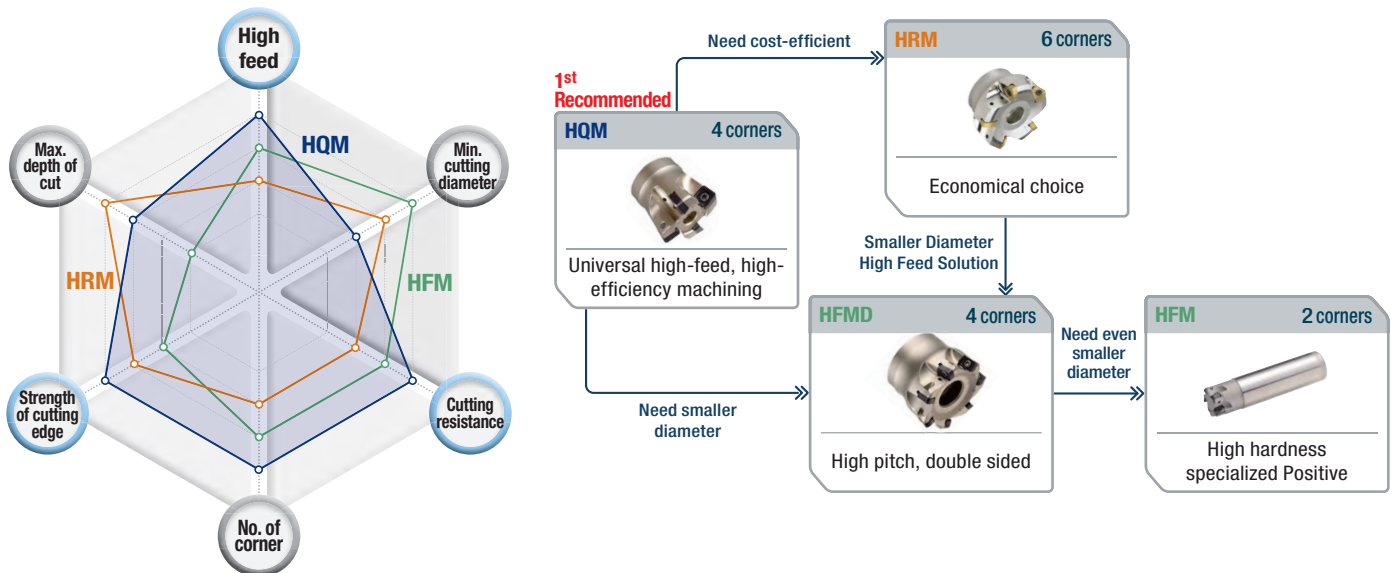
LPMT0402□OR-MF

LPMW0402□OR

LPEW0402□OR



## ※ High feed milling selection guide



Item	Cost-effectiveness	Cutting resistance	Max. Depth of cut	No. of corners	Min. Cutting dia
HQM	★★★★	★★★★★	★★★★	★★★★	★★
HFMD	★★★	★★★★	★★★	★★★★	★★★★★
HFM	★	★★	★★	★★	★★★★★
HRMD	★★★★★	★★★★	★★★★★	★★★★★	★★★★

# Alpha Mill-X

High helix design for high speed,  
high feed shoulder milling

Buy 10 Inserts per Pocket  
**GET 1 FREE CUTTER**

Use Code [ PRM26001 ]



## AMXSA-AD10

### ▶ AD10 Type

: Ø0.625 - Ø1.50inch

#### Insert

[ADHT10T304PEFR-MA](#)

[ADKT10T304PEER-ML](#)

[ADKT10T3□□PESR-MM](#)



## AMXCA-AD10

### ▶ AD10 Type

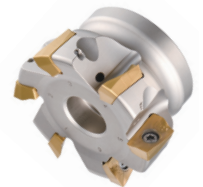
: Ø1.50 - Ø3.00inch

#### Insert

[ADHT10T304PEFR-MA](#)

[ADKT10T304PEER-ML](#)

[ADKT10T3□□PESR-MM](#)



## AMXSA-AD12

### ▶ AD12 Type

: Ø0.75 - Ø1.50inch

#### Insert

[ADHT12408PEFR-MA](#)

[ADKT12408PEER-ML](#)

[ADKT124□□PESR-MM](#)



## AMXCA-AD12

### ▶ AD12 Type

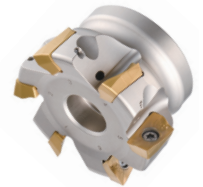
: Ø1.50 - Ø3.00inch

#### Insert

[ADHT12408PEFR-MA](#)

[ADKT12408PEER-ML](#)

[ADKT124□□PESR-MM](#)



## AMXSA-AD17

### ▶ AD17 Type

: Ø1.00 - Ø1.50inch

#### Insert

[ADHT170608PEFR-MA](#)

[ADKT170608PESR-ML](#)

[ADKT1706□□PESR-MM](#)



## AMXCA-AD17

### ▶ AD17 Type

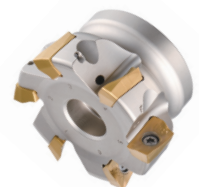
: Ø1.50 - Ø5.00inch

#### Insert

[ADHT170608PEFR-MA](#)

[ADKT170608PESR-ML](#)

[ADKT1706□□PESR-MM](#)

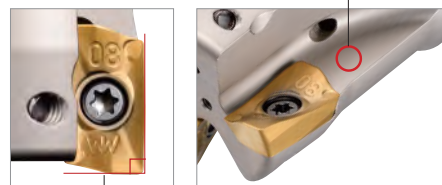


### ▶ Features of cutter



#### High rake angle cutting edge

- Improved surface finish
- Decreased cutting load



#### Wider chip pocket

- Maximized chip control
- Outstanding chip control in high speed and high feed machining

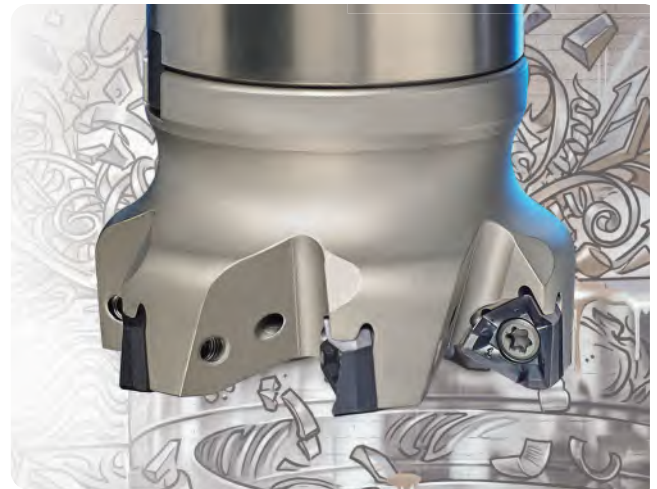
Perfect perpendicularity

# RM3

Cost effective, high efficiency 3 corner shoulder milling

Buy 10 Inserts per Pocket  
**GET 1 FREE CUTTER**

Use Code [ PRM26001 ]



## RM3PSA3000

▶ 3000 Type  
: Ø0.75 - Ø1.50inch  
Insert

XNKT06040 □ PNER-ML  
XNKT06040 □ PNSR-MM



## RM3PCA3000

▶ 3000 Type  
: Ø1.50 - Ø3.00inch  
Insert

XNKT06040 □ PNER-ML  
XNKT06040 □ PNSR-MM



## RM3PSA4000

▶ 4000 Type  
: Ø2.00 - Ø1.00inch  
Insert

XNCT0805 □ □ PNFR-MA  
XNKT0805 □ □ PNER-ML  
XNKT0805 □ □ PNSR-MM



## RM3PCA4000

▶ 4000 Type  
: Ø1.50 - Ø5.00inch  
Insert

XNCT0805 □ □ PNFR-MA  
XNKT0805 □ □ PNER-ML  
XNKT0805 □ □ PNSR-MM



## RM3PCA5000

▶ 5000 Type  
: Ø3.00 - Ø5.00inch  
Insert

XNCT120608PNFR-MA  
XNKT1206 □ □ PNER-ML  
XNKT1206 □ □ PNSR-MM



### Features of insert

#### Chip breaker

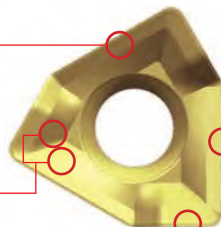
- High rake angle
- Smooth chip flow

#### Step design

- Good chip evacuation
- Low cutting force

#### Minor cutting-edge

- Wiper action for better surface finish



#### Major cutting-edge

- High rake
- Sharpened edge

#### APMX

XNKT12: 0.472 inch  
XNKT08: 0.315 inch  
XNKT06: 0.217 inch



#### 2-step clearance

- Strong clamping
- Rigidity improvement

# Pro-X Mill

Optimized aluminum milling with a mirrored finish

Buy 10 Inserts per Pocket  
**GET 1 FREE CUTTER**

Use Code [ PRM26001 ]



## PAXSA5000-A,B

### ► 5000 Type

: Ø0.75 - Ø1.50inch

Insert

XEKT19M5   FR-MA

XEKT19M5   ER-ML



## PAXCA5000-A,B

### ► 5000 Type

: Ø1.50 - Ø5.00inch

Insert

XEKT19M5   FR-MA

XEKT19M5   ER-ML



## PAXSA6000-A,B

### ► 6000 Type

: Ø1.00 - Ø1.50inch

Insert

XEKT2506   FR-MA

XEKT2506   ER-ML



## PAXCA6000-A,B

### ► 6000 Type

: Ø2.00 - Ø5.00inch

Insert

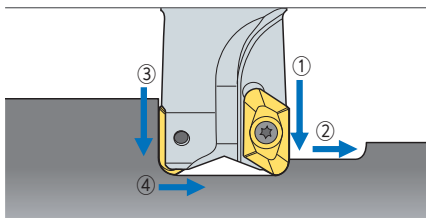
XEKT2506   FR-MA

XEKT2506   ER-ML



- A type: Insert NoseR 0.016 - 0.126 (XEKT  04FR-MA - XEKT  32FR-MA)
- B type: Insert NoseR 0.157 - 0.197 (XEKT  40FR-MA & XEKT  50FR-MA)

## ► Plunging, slotting, drilling technical data



1. When drilling, grooving machining sequence is ① → ② → ③ → ④
2. When drilling, grooving, decrease the feed and cutting speed 30% - 50% from the recommended data

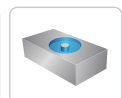
### • Cutting conditions for drilling

Holder	ap (inch)	
	5000 type	6000 type
Ø0.75	0.315	-
Ø1.00	0.157	0.433
Ø1.25	0.157	0.236
Ø1.50 - 5.00	0.157	0.236
Insert	ap (inch)	
XEKT19	0.157	
XEKT25	0.236	

### ► Use



Copying



Helical cutting



Slotting & Shouldering



Ramping

# TPDB Plus

Highly precise, efficient top solid indexable drill

Buy 6 Inserts per Pocket

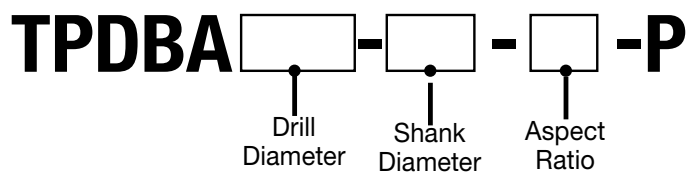
**GET 50% OFF DRILL BODY**

Use Code [ PRM26002 ]

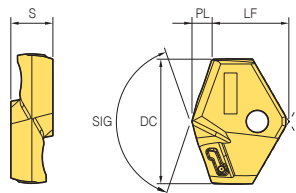
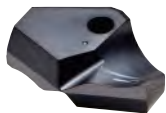


## TPDB Plus Drill (3D/5D/8D)

▶ Ø0.394 inch - Ø1.298 inch

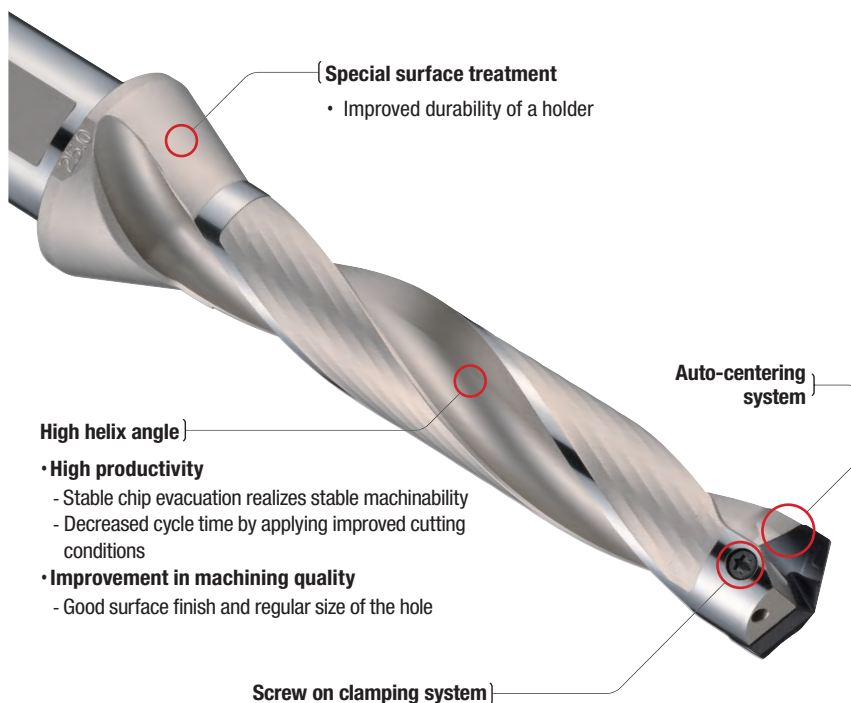


## TPDB Plus Insert



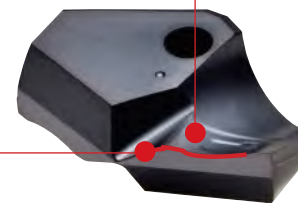
▶ DC : Ø0.394 inch - Ø1.298 inch

## Features



- **High productivity**
  - Stable chip evacuation realizes stable machinability
  - Decreased cycle time by applying improved cutting conditions
- **Improvement in machining quality**
  - Good surface finish and regular size of the hole

**Advanced chip control due to a chip breaker**



**Cutting edge with low cutting resistance**  
- Low cutting load and excellent chip control

# KING Drill

Superior chip control and stable tool life for efficient drilling

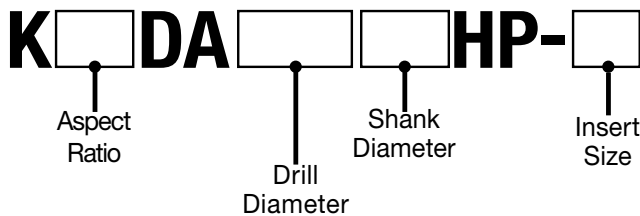
Buy 20 Inserts per Pocket

**GET 50% OFF DRILL BODY**

Use Code [ PRM26003 ]



## KING Drill (2D/3D/4D/5D)



▶ Ø1/64 inch - Ø2 3/8 inch

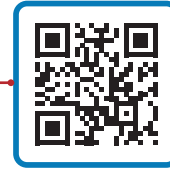


### Features of insert

Chip breaker	PD		LD		ND		RD
<b>Features</b>	- Universal - At medium speed and medium feed		- Superior chip control for machining mild steel and stainless steel - Light cutting (at low - medium speed and low feed)		- Sharp cutting edge for aluminum machining - Insert surface buffed for high quality result - E Class tolerance		- Improved chipping resistance - Excellent performance in case of frequent fracture and chipping on the cutting edge
<b>Insert</b>	Peripheral insert <b>SPMT-PD</b>	Central insert <b>XOMT-PD</b>	Peripheral insert <b>SPMT-LD</b>	Central insert <b>XOMT-LD</b>	Peripheral insert <b>SPET-ND</b>	Central insert <b>XOET-ND</b>	Central insert <b>XOMT-RD</b>
<b>Shape</b>							
<b>Applicable Insert</b>	SPMT04-PD SPMT15-PD SPMT05-PD SPMT18-PD SPMT06-PD SPMT07-PD SPMT09-PD SPMT11-PD SPMT13-PD	XOMT04-PD XOMT15-PD XOMT05-PD XOMT18-PD XOMT06-PD XOMT07-PD XOMT09-PD XOMT11-PD XOMT13-PD	SPMT06-LD SPMT07-LD SPMT09-LD SPMT11-LD SPMT13-LD SPMT15-LD SPMT18-LD	XOMT06-LD XOMT07-LD XOMT09-LD XOMT11-LD XOMT13-LD XOMT15-LD XOMT18-LD	SPET04-ND SPET15-ND SPET05-ND SPET18-ND SPET06-ND SPET07-ND SPET09-ND SPET11-ND SPET13-ND	XOET04-ND XOET15-ND XOET05-ND XOET18-ND XOET06-ND XOET07-ND XOET09-ND XOET11-ND XOET13-ND	XOMT07-RD XOMT09-RD XOMT11-RD XOMT13-RD XOMT15-RD XOMT18-RD
<b>Grades for workpiece</b>	NC5330 : P, M, K PC3700 : P PC5300 : P, M, K, S PC6100 : K PC9540 : P, M, S	PC5300 : P, M, K, S PC9540 : P, M, S	PC5335 : P, M		H01 : N		PC5300 : P, M, K, S

## INTRODUCTION OF DIGITAL CATALOG

- 1) Connect to the digital catalogue on PC or mobile  
 » <https://catalog.korloy.com>
- 2) Guideline for main screen



### For PC

**Grade guide**  
Explanation of standard grades on the catalogue

**My assembly**  
Vivid assembly

**Log in/ registration**  
E-mail/password

**Language**  
Switch to the selected language

**Measurement unit**  
Metric/inch

**Current(Unused)**  
KRW/USD/EUR

**Search items**  
Search necessary item with its grade or designation

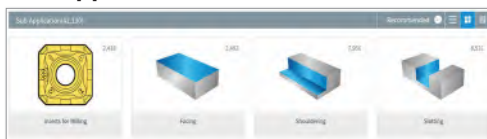
**Main application**  
Select the main application of necessary items.

### For Mobile



## Details

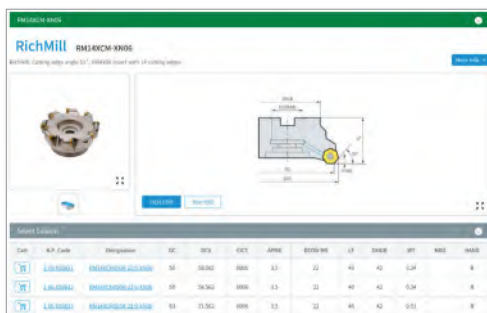
### » Sub application



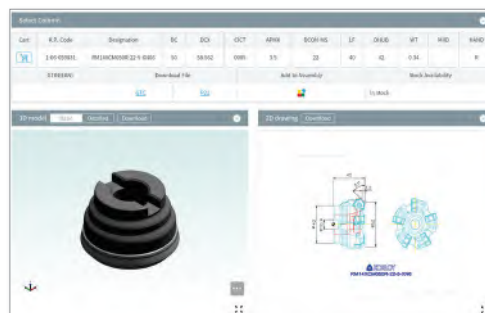
### » Item group



### » Item



### » Item data, 2/3D modeling and details



## ***KORLOY America Promotion:***

- Please use promo code [ PRM2600□ ]
- Valid only for US & Korea stock items.
- Promotion valid through September 30th, 2026.
- Enduser drop-shipment required.
- Cannot be combined with any other offers. No blanket order accepted.
- Promotion may end without prior notice.




*60<sup>th</sup> Anniversary of KORLOY*

**Need a customized promotion?  
We're ready to discuss a flexible deal for in-stock items.  
Contact us!**

 **KORLOY AMERICA Inc.**

620 Maple Ave., Torrance, CA 90503, USA

 <b>AHB</b> TOOLING & MACHINERY	<b>COMPLETE METALWORKING SOLUTIONS</b>
	(800) 991-4225
	www.ahbinc.com
	ISO Certified customerservice@ahbinc.com

KAIPROMO / 20260701