

PROMOTION

TURNING INSERT

★★★
= PROMO CODE =
PRM25006

Buy **10 CNMG432-RM NC9125** Inserts —
Get a **DCLNR16-4D** or **DCLNL16-4D** Holder **FREE!**

Features of RM chip breaker [For roughing]

Depth of cut land

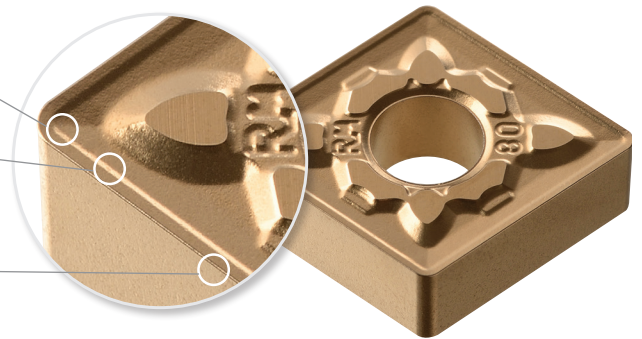
Excellent chip control, sharp cutting, and enhanced wear resistance at low depths of cut.

Wide land & front angle

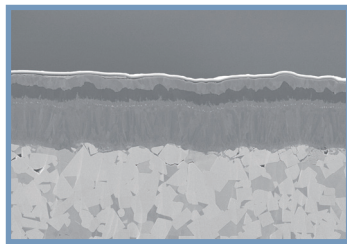
Reduces cutting force and burrs while improving toughness through dispersed cutting load.

Step

Stepped design ensures smooth chip evacuation and prevents plastic deformation.



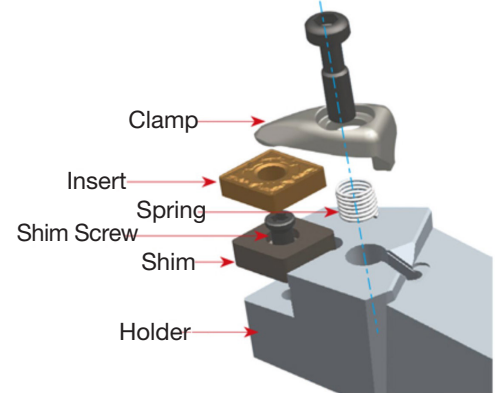
Features of NC9125 : ISO M20~M30, S15~25(MT-TiCN + Al₂O₃ + TiN)



[NC9100 Series]

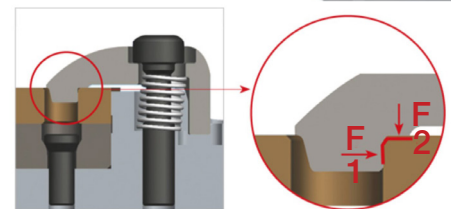
- New Alumina Layer Applied
- Thin Film with Improved Chipping Resistance
- Optimized Substrate Selection for Each Material Group

※ Double clamp system



Recommended grade and chip breaker per stainless steel type

Stainless steel type	Cutting speed (sfm) - NC9125				
	164	328	492	656	820
Austenitic stainless steel			492	656	
Duplex stainless steel		328	459		
Ferritic / Martensitic stainless steel			394	722	
Precipitation hardened (PH) stainless steel	131	361			



Compact Clamp Design

Terms and Conditions:

- Please use promo code [PRM25006]
- The EDP Number of CNMG432-RM NC9125 is '1-02-059543'.
- Promotion valid through November 30, 2025. Promotion may end without prior notice.
- Cannot be combined with any other offers. No blanket order accepted.

KORLOY AMERICA Inc.
620 Maple Avenue, Torrance, CA 90503, USA

AHB
TOOLING & MACHINERY

COMPLETE METALWORKING SOLUTIONS
(800) 991-4225 www.ahbinc.com
ISO Certified customerservice@ahbinc.com