

**ARNO®**  
**WERKZEUGE**

ARNO  
WERKZEUGE

PCLNR 2020 X12-IK-3  
PCLNR 124B-IK-3D-.7  
EDP 502830

**AHB**  
TOOLING & MACHINERY

COMPLETE METALWORKING SOLUTIONS  
(800) 991-4225 www.ahbinc.com  
ISO Certified customerservice@ahbinc.com

ARNO  
INNOVATIONS  
**3D 'HYBRID'  
TOOLS**  
volume 2023.04



SCAN ME

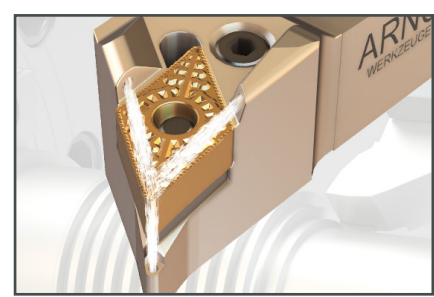
# THROUGH COOLANT INDEXABLE TURNING TOOLS

## innovation inside and out

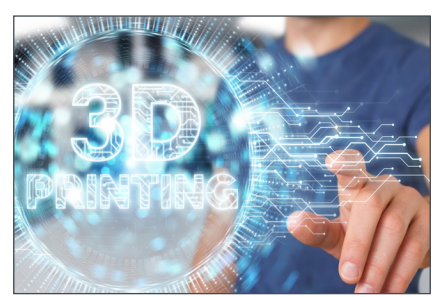
### *Additive manufacturing technology brings more coolant to the cutting edge*

How do you improve turning performance? Get coolant to the cut zones through 3 ports with one under the insert flank. Eliminate the top clamp that is prone to damage and just gets in the way. Then 3D print the tool for smooth high volume channels without restrictive cross drilling. More coolant and no special hardware, that's the 3D Hybrid indexable turning tool from ARNO. Simply a better solution for high performance turning operations.

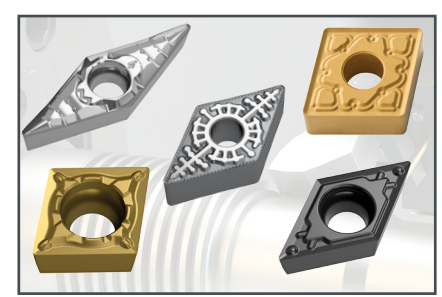
## FEATURES & BENEFITS



**Targeted 3 Zone Coolant**  
Higher volumes of coolant targeting critical wear zones will increase tool life and significantly improve chip control.



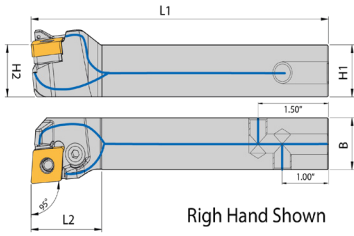
**3D Printed**  
Additive manufacturing technology enables the production high volume coolant channels without restrictive cross-drilling.



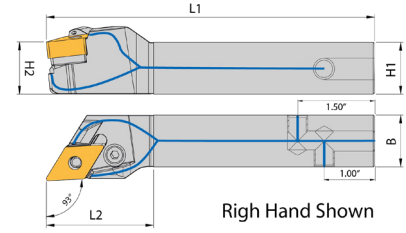
**High Performance Inserts**  
A game-changing combination: 3D through coolant and ARNO's high performance inserts. Are *you* ready for an upgrade?

# TECHNICAL DATA

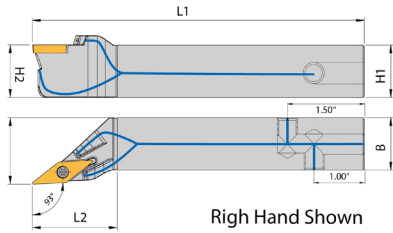
# -3D HYBRID TOOLS



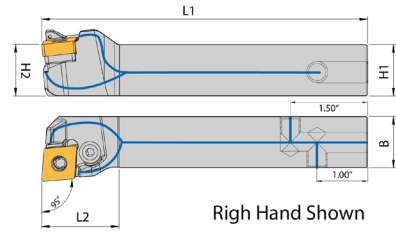
EDP	ANSI Description	Hand	Shank Size	Insert	H1 / H2	B (Inch)	L1 (Inch)	L2 (Inch)	Port Size
502850	SCLCL 103-IK-3D-.625	LH	5/8"	CC** 32.5*	0.625	0.625	3.937	0.866	1/8" NPT
502851	SCLCL 123B-IK-3D-.750	LH	3/4"	CC** 32.5*	0.750	0.750	4.921	0.866	1/8" NPT
502852	SCLCL 164D-IK-3D-1.000	LH	1.00"	CC** 43*	1.000	1.000	5.906	1.181	1/8" NPT
502853	SCLCR 103-IK-3D-.625	RH	5/8"	CC** 32.5*	0.625	0.625	3.937	0.866	1/8" NPT
502854	SCLCR 123B-IK-3D-.750	RH	3/4"	CC** 32.5*	0.750	0.750	4.921	0.866	1/8" NPT
502855	SCLCR 164D-IK-3D-1.000	RH	1.00"	CC** 43*	1.000	1.000	5.906	1.181	1/8" NPT



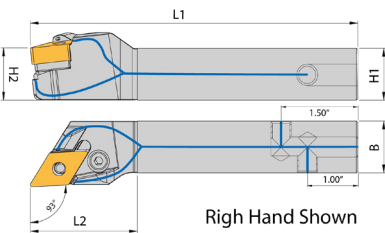
EDP	ANSI Description	Hand	Shank Size	Insert	H1 / H2	B (Inch)	L1 (Inch)	L2 (Inch)	Port Size
502856	SDJCL 103-IK-3D-.625	LH	5/8"	DC** 32.5*	0.625	0.625	3.980	1.102	1/8" NPT
502857	SDJCL 123B-IK-3D-.750	LH	3/4"	DC** 32.5*	0.750	0.750	4.970	1.102	1/8" NPT
502859	SDJCL 164D-IK-3D-1.000	LH	1.00"	DC** 32.5*	1.000	2.063	5.955	1.181	1/8" NPT
502858	SDJCR 101-IK-3D-.625	RH	5/8"	DC** 32.5*	0.625	0.625	3.980	1.102	1/8" NPT
502860	SDJCR 121B-IK-3D-.750	RH	3/4"	DC** 32.5*	0.750	0.750	4.970	1.102	1/8" NPT
502861	SDJCR 161D-IK-3D-1.000	RH	1.00"	DC** 32.5*	1.000	2.063	5.955	1.181	1/8" NPT



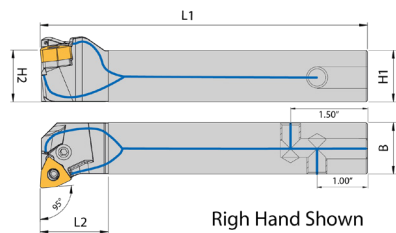
EDP	ANSI Description	Hand	Shank Size	Insert	H1 / H2	B (Inch)	L1 (Inch)	L2 (Inch)	Port Size
502862	SVJCL 101-IK-3D-.625	LH	5/8"	VC** 220*	0.625	0.625	3.937	1.102	1/8" NPT
502863	SVJCL 102-IK-3D-.625	LH	5/8"	VC** 22.5*	0.625	0.625	3.937	1.181	1/8" NPT
502864	SVJCL 121B-IK-3D-.750	LH	3/4"	VC** 220*	0.750	0.750	4.921	1.181	1/8" NPT
502865	SVJCL 122B-IK-3D-.750	LH	3/4"	VC** 22.5*	0.750	0.750	4.921	1.260	1/8" NPT
502866	SVJCL 123B-IK-3D-.750	LH	3/4"	VC** 33*	0.750	0.750	4.921	1.417	1/8" NPT
502867	SVJCL 163D-IK-3D-1.000	LH	1.00"	VC** 33*	1.000	1.000	5.906	1.614	1/8" NPT
502868	SVJCR 101-IK-3D-.625	RH	5/8"	VC** 220*	0.625	0.625	3.937	1.102	1/8" NPT
502869	SVJCR 102-IK-3D-.625	RH	5/8"	VC** 22.5*	0.625	0.625	3.937	1.181	1/8" NPT
502870	SVJCR 121B-IK-3D-.750	RH	3/4"	VC** 220*	0.750	0.750	4.921	1.181	1/8" NPT
502871	SVJCR 122B-IK-3D-.750	RH	3/4"	VC** 22.5*	0.750	0.750	4.921	1.260	1/8" NPT
502872	SVJCR 123B-IK-3D-.750	RH	3/4"	VC** 33*	0.750	0.750	4.921	1.417	1/8" NPT
502873	SVJCR 163D-IK-3D-1.000	RH	1.00"	VC** 33*	1.000	1.000	5.906	1.614	1/8" NPT



EDP	ANSI Description	Hand	Shank Size	Insert	H1 / H2	B (Inch)	L1 (Inch)	L2 (Inch)	Port Size
502826	PCLNL 104-IK-3D-.625	LH	5/8"	CN** 43*	0.625	0.625	3.937	1.181	1/8" NPT
502827	PCLNL 124B-IK-3D-.750	LH	3/4"	CN** 43*	0.750	0.750	4.970	1.181	1/8" NPT
502828	PCLNL 164D-IK-3D-1.000	LH	1.00"	CN** 43*	1.000	1.000	5.955	1.181	1/8" NPT
502829	PCLNR 104-IK-3D-.625	RH	5/8"	CN** 43*	0.625	0.625	3.937	1.181	1/8" NPT
502830	PCLNR 124B-IK-3D-.750	RH	3/4"	CN** 43*	0.750	0.750	4.970	1.181	1/8" NPT
502831	PCLNR 164D-IK-3D-1.000	RH	1.00"	CN** 43*	1.000	1.000	5.955	1.181	1/8" NPT



EDP	ANSI Description	Hand	Shank Size	Insert	H1 / H2	B (Inch)	L1 (Inch)	L2 (Inch)	Port Size
502832	PDJNL 103-IK-3D-.625	LH	5/8"	DN**33*	0.625	0.625	3.937	1.181	1/8" NPT
502833	PDJNL 123B-IK-3D-.750	LH	3/4"	DN**33*	0.750	0.750	4.921	1.181	1/8" NPT
502834	PDJNL 124B-IK-3D-.750	LH	3/4"	DN** 43*	0.750	0.750	4.921	1.575	1/8" NPT
502836	PDJNL 164D-IK-3D-1.000	LH	1.00"	DN** 43*	1.000	0.986	5.906	1.614	1/8" NPT
502837	PDJNR 103-IK-3D-.625	RH	5/8"	DN**33*	0.625	0.625	3.937	1.181	1/8" NPT
502838	PDJNR 123B-IK-3D-.750	RH	3/4"	DN**33*	0.750	0.750	4.921	1.181	1/8" NPT
502839	PDJNR 124B-IK-3D-.750	RH	3/4"	DN** 43*	0.750	0.750	4.921	1.575	1/8" NPT
502840	PDJNR 163D-IK-3D-1.000	RH	1.00"	DN** 43*	1.000	1.000	5.906	1.181	1/8" NPT
502841	PDJNR 164D-IK-3D-1.000	RH	1.00"	DN** 43*	1.000	0.986	5.906	1.614	1/8" NPT



EDP	ANSI Description	Hand	Shank Size	Insert	H1 / H2	B (Inch)	L1 (Inch)	L2 (Inch)	Port Size
502842	PWLNL 103-IK-3D-.625	LH	5/8"	WN** 33*	0.625	0.625	3.937	0.984	1/8" NPT
502843	PWLNL 123B-IK-3D-.750	LH	3/4"	WN** 33*	0.750	0.750	4.921	1.024	1/8" NPT
502844	PWLNL 124B-IK-3D-.750	LH	3/4"	WN** 43*	0.750	0.750	4.921	1.181	1/8" NPT
502845	PWLNL 164D-IK-3D-1.000	LH	1.00"	WN** 43*	1.000	1.000	5.906	1.181	1/8" NPT
502846	PWLNLR 103-IK-3D-.625	RH	5/8"	WN** 33*	0.625	0.625	3.937	0.984	1/8" NPT
502847	PWLNLR 123B-IK-3D-.750	RH	3/4"	WN** 33*	0.750	0.750	4.921	1.024	1/8" NPT
502848	PWLNLR 124B-IK-3D-.750	RH	3/4"	WN** 43*	0.750	0.750	4.921	1.181	1/8" NPT
502849	PWLNLR 164D-IK-3D-1.000	RH	1.00"	WN** 43*	1.000	1.000	5.906	1.181	1/8" NPT