



Standard
Tooling For
Haas Lathes



Performance
measured by you



► Visit Command Tooling Systems' on line catalog for Command standard product part file downloads, up-to-date stock levels and our list price instant quoting feature. Command's printed catalogs and fliers are also available for download from the Command Tooling Systems website.

WWW.COMMANDTOOL.COM

Command Tooling Systems is the technology leader in toolholder manufacturing.

Command's driven and bolt-on tool line for Haas machines was developed in cooperation with parent company EWS Tool Technologies, headquartered in Uhingen Germany.

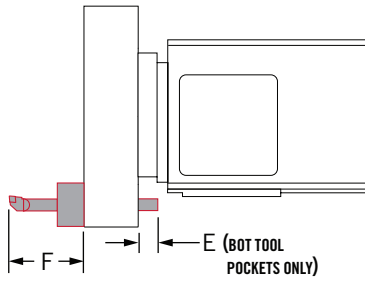
All Live Axial / Radial and Bolt-On tools are designed, manufactured and distributed from our Ramsey Minnesota facility.

Visit our website for more information on Command Tooling Systems products, information downloads and distributors in your area.

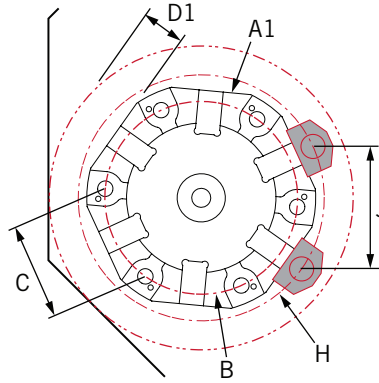
Haas Tooling Table Of Contents

| | |
|--|-------|
| HAAS LATHE TURRET INFO | 1-3 |
| VB24 BOLT-ON TOOLS | 4-11 |
| Boring Bar Holder | 4 |
| Face Grooving..... | 5 |
| Facing..... | 6 |
| Parting Tool Holder..... | 7 |
| Extended Parting Tool..... | 8 |
| Extended Twin Turn..... | 9 |
| Twin Bore..... | 10 |
| Extended Twin Bore..... | 11 |
| VB24 BOLT-ON ACCESSORIES | 12-13 |
| Tool Wedge Clamp..... | 12 |
| Reduction Sleeves..... | 13 |
| Coolant Nozzle/Pipe..... | 13 |
| VDI40 LIVE TOOL INFO | 14-15 |
| VDI40 LIVE TOOLS | 16-17 |
| Axial..... | 16 |
| Radial..... | 17 |
| VDI40 LIVE TOOL ACCESSORIES | 18 |
| ER32 Collets/Collet Nut/Wrench..... | 18 |
| Coolant Nozzle/Pipe..... | 18 |
| BOT/VB HYBRID BOLT-ON TOOLS | 19-27 |
| Boring Bar Holder..... | 19 |
| Face Grooving..... | 20 |
| Parting Tool..... | 21 |
| Extended Parting Tool..... | 22 |
| Twin Turn..... | 23 |
| Extended Twin Turn..... | 24 |
| Twin Bore..... | 25 |
| Extended Twin Bore..... | 26 |
| Turret Wedge Clamp..... | 27 |
| BOT/VB HYBRID/BMT 65 BOLT-ON TOOL ACCESSORIES | 28-29 |
| Reduction Sleeves..... | 28 |
| Tool Wedge Clamp..... | 29 |
| Coolant Nozzle/Pipe..... | 29 |
| BMT65 BOLT-ON TOOLS | 30-39 |
| Boring Bar Holder..... | 31 |
| Twin Boring Bar Holder..... | 32 |
| Turning Tool..... | 33 |
| Split Block Boring Bar Holder..... | 34 |
| Twin Turning Tool..... | 35 |
| Half-Index Turning Tool..... | 36 |
| Half-Index Boring Bar Holder..... | 37 |
| Extended Half-Index Twin Boring Bar Holder..... | 38 |
| Half-Index Twin Turning Tool..... | 39 |
| BMT65 LIVE TOOLS | 40-41 |
| Axial..... | 40 |
| Radial..... | 41 |
| BMT65 MODULAR TOOLS | 42-53 |
| Varia Axial..... | 43 |
| Varia Radial..... | 44 |
| Varia Adapters..... | 45 |
| KM50 Turning Tool..... | 46 |
| KM50 Twin Turning Tool..... | 47 |
| KM50 Boring Bar Holder..... | 48 |
| KM50 Twin Boring Bar Holder..... | 49 |
| PSC 40 Turning Tool..... | 50 |
| PSC 40 Twin Turning Tool..... | 51 |
| PSC 40 Boring Bar Holder..... | 52 |
| PSC 40 Twin Boring Bar Holder..... | 53 |
| RELATED PRODUCTS | 54-55 |
| Angle Heads..... | 54 |
| Gear Hobbers/ Swivel Heads/ KM Quick Change/Varia..... | 55 |

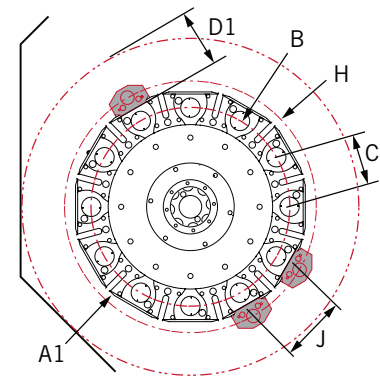
Haas Lathe Turret Specifications



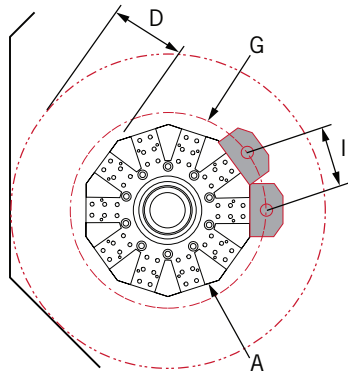
MAX TOOL STICK OUT



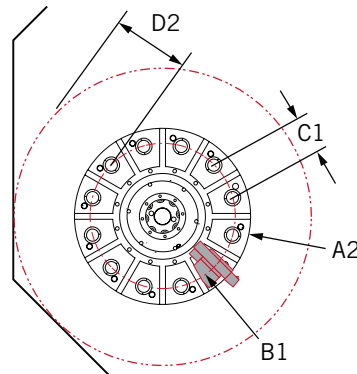
VB HYBRID 12 STATION



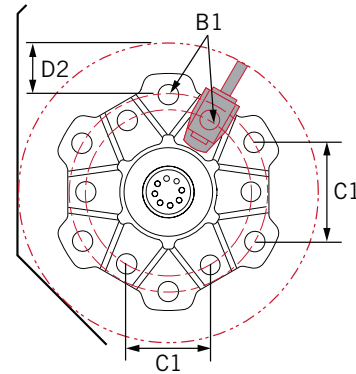
VB24 HYBRID 24 STATION
(ALL SS MODELS)



BOT TURRET



VDI TURRET



ST-10 VDI TURRET

| Description | ST-20 ST-20Y | ST-30 ST-30Y | ST-20SS ST-20SSY | DS-30 DS-30Y | ST-30SS, ST-30SSY DS-30SS, DS-30SSY | SL-40 ST-40 |
|---|-----------------|-----------------|---------------------|-----------------|--|-----------------|
| A BOT TURRET OD DIAMETER (FLATS) | 16.16" (410 mm) | 16.16" (410 mm) | — | — | — | 22.27" (566 mm) |
| A1 VB12/24 TURRET OD DIAMETER (FLATS) | 18.95" (481 mm) | 18.95" (481 mm) | 21.45" (545 mm) | 18.95" (481 mm) | 21.20" (538 mm) | 22.27" (566 mm) |
| A2 VDI TURRET OD TURRET DIAMETER | 19.00" (483 mm) | 19.00" (483 mm) | — | — | — | 23.75" (603 mm) |
| B VB12/24 TURRET VDI40 POCKET CIRCLE | 15.63" (397 mm) | 15.63" (397 mm) | 18.25" (464 mm) | 15.63" (397 mm) | 18.25" (464 mm) | 20.00" (508 mm) |
| B1 VDI TURRET VDI40 POCKET CIRCLE | 15.63" (397 mm) | 15.63" (397 mm) | — | 15.63" (397 mm) | — | 20.00" (508 mm) |
| C VB12/24 TURRET VDI40 POCKET SPACING | 7.81" (198 mm) | 7.81" (198 mm) | 4.69" (119 mm) | 7.81" (198 mm) | 4.69" (119 mm) | 10.00" (254 mm) |
| C1 VDI TURRET VDI40 POCKET SPACING | 4.04" (103 mm) | 4.04" (103 mm) | — | — | — | 5.17" (131 mm) |
| D BOT TURRET FROM FLATS TC CLEARANCE | 6.90" (175 mm) | 8.00" (203 mm) | — | — | — | 9.00" (229 mm) |
| D1 VB12/24 TURRET FROM FLATS TC CLEARANCE | 5.50" (140 mm) | 6.85" (174 mm) | 4.50" (114 mm) | 6.85" (174 mm) | 5.85" (149 mm) | 9.00" (229 mm) |
| D1 VB12/24 TURRET FROM VDI40 CENTER TC CLEARANCE | 7.00" (178 mm) | 8.35" (212 mm) | 6.00" (152 mm) | 8.35" (212 mm) | 7.35" (187 mm) | 10.00" (254 mm) |
| D2 VDI TURRET FROM VDI40 CENTER TC CLEARANCE | 7.00" (178 mm) | 8.35" (212 mm) | — | — | — | 10.00" (254 mm) |
| E BOT TURRET BOLT-ON TOOL MAX REAR STICK-OUT | 4.00" (102 mm) | 4.00" (102 mm) | — | — | — | 4.37" (111 mm) |
| E VB12/24 TURRET BOLT-ON TOOL MAX REAR STICK-OUT | 4.00" (102 mm) | 4.00" (102 mm) | 4.00" (102 mm) | 4.00" (102 mm) | 4.00" (102 mm) | 4.37" (111 mm) |
| E VDI TURRET VDI40 POCKET MAX TOOL REAR STICK-OUT | 0.40" (10.2 mm) | 0.40" (10.2 mm) | 0.40" (10.2 mm) | 0.40" (10.2 mm) | 0.40" (10.2 mm) | 0.40" (10.2 mm) |
| F ***REC. MAX TOOL STICK-OUT FROM FACE OF TURRET AT FULL Z TRAVEL | 5.00" (127 mm) | 5.00" (127 mm) | 5.00" (127 mm) | 5.00" (127 mm) | 6.00" (152 mm) | *** |
| G BOT TURRET ID TOOL POCKET DIAMETER | 18.66" (474 mm) | — | — | — | — | 25.42" (646 mm) |
| H VB12/24 TURRET ID TOOL POCKET DIAMETER | 21.45" (545 mm) | 21.45" (545 mm) | 23.20" (589 mm) | 21.45" (545 mm) | 23.20" (589 mm) | 25.42" (646 mm) |
| I BOT TURRET ID TOOL POCKET SPACING | 4.80" (122 mm) | — | — | — | — | 6.60" (168 mm) |
| J VB12/24 TURRET ID TOOL POCKET SPACING | 10.72" (272 mm) | 10.72" (272 mm) | 6.00" (152 mm) | 10.72" (272 mm) | 6.00" (152 mm) | 12.76" (324 mm) |

***EXCEEDING THIS STICK-OUT MAY RESULT IN COLLISION WITH THE FRONT BULKHEAD
***A 25" (635 mm) DEEP POCKET IN THE ST-40 PROVIDES CLEARANCE FOR BORING BARS AND LONG TOOLS.

TURRET OPTIONS FOR HAAS LATHE MACHINES

TURRET TYPE AND MACHINE

BOT

BOT TURRET

12 Station bolt-on tool turret for turning tools and boring bars. The BOT turret accepts tools around the perimeter, with radial slots for mounting turning tools in the left or right hand direction.



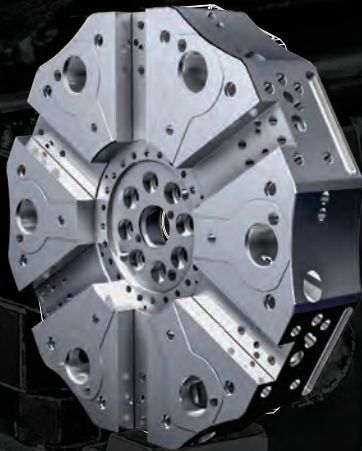
STANDARD
TURRET
ON

- + ST-20
- + ST-25
- + ST-30
- + ST-35

VB HYBRID

12 STATION HYBRID

12 Station hybrid turret for VDI40 tools, live tools and standard bolt-on tools. The VB Hybrid has 6 VDI stations and 6 bolt-on stations; radial slots for turning tools and perimeter stations for ID tools.



STANDARD
TURRET
ON

- + ST-20Y
- + ST-25Y
- + ST-30Y
- + ST-35Y
- + DS-30
- + DS-30Y

OPTIONAL
TURRET
ON

- + ST-20
- + ST-25
- + ST-30
- + ST-35

VB24

24 STATION HYBRID

Standard turret on all Super Speed (SS) models. The 24 station hybrid turret accepts VDI40 tools, live tools and standard bolt-on tools. The VB24 has 12 VDI stations and 12 bolt-on stations; radial slots for turning tools and perimeter stations for ID tools.



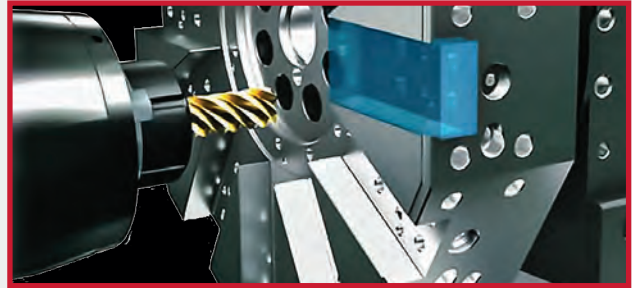
STANDARD
TURRET
ON

- + ST-20SS
- + ST-20SSY
- + ST-30SS
- + ST-30SSY
- + DS-30SS
- + DS-30SSY

THE VB24 TURRET
IS NOT AVAILABLE AS AN OPTIONAL TURRET

FULL RANGE OF TOOLS FOR BOT, VB HYBRID, VB24, AND BMT65

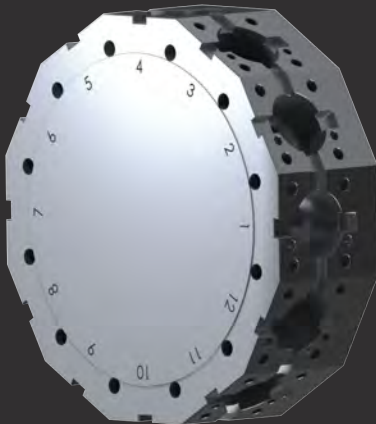
Haas ST/DS series turning center turrets are finish-machined as a complete unit. Keying off the turret's centerline, all critical features of each station are machined using single-axis moves, then the turret is indexed to the next station - ensuring the absolute concentricity of each station with the turret's true center. This reduces positioning variation from tool to tool by more than 90%. The results are easier job set up, higher accuracy, and better repeatability.



On-The-Fly Indexing - This standard feature allows tool changes on the fly as the axes retract from the part. Combined with high-speed rapid movements, this results in faster tool changes and shorter cycle times by reducing non-cutting time.



BMT65



12 STATION BMT65

The 12 Station base mount tooling turret accepts bolt-on tools and live tools.

Standard Turret On

- + ST-20Y
- + ST-25Y
- + ST-30Y
- + ST-35Y
- + DS-30Y

Optional Turret On

- + ST-20
- + ST-25
- + ST-30
- + ST-35

VDI



12 STATION VDI

12 Station VDI Turret accepts standard VDI40 tools, including axial and radial live tools.

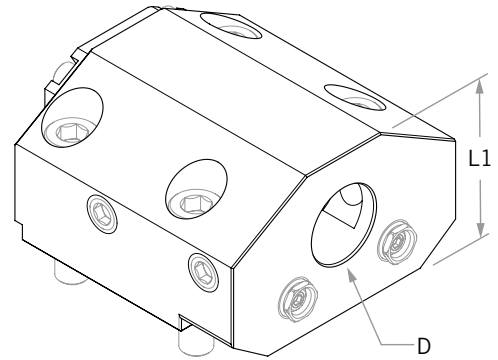
For more details on live tooling, see page 14.

The 12 Station VDI turret is an optional turret for:

- + ST-20
- + ST-25
- + ST-30
- + ST-35

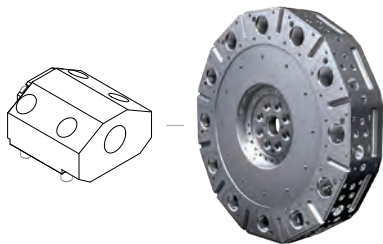
Boring Bar Holder

- ▶ Bolt-On Boring Bar Holder for VB24 24 Station Turret. Inch & metric available. See tool/turret diagram below for compatible machines. Contact support@commandtool.com for more information.



| Boring Bar - IN | Part No. | D | L1 | Mfr. Part No. Equivalent |
|-----------------|--------------------|-------|-------|--------------------------|
| | 19.BMT25.4HAASV24 | 1.00" | 1.97" | BOT24ID-1 |
| | 19.BMT31.75HAASV24 | 1.25" | 1.97" | BOT24ID-1_1/4 |

| Boring Bar - MM | Part No. | D | L1 | Mfr. Part No. Equivalent |
|-----------------|-----------------|------|------|--------------------------|
| | 19.BMT25HAASV24 | 25mm | 50mm | BOT24MID-25 |
| | 19.BMT32HAASV24 | 32mm | 50mm | BOT24MID-32 |



VB24 Turret
 Standard For Machines:
 + ST-20SS, ST-20SSY
 + ST-30SS, ST-30SSY
 + DS-30SS, DS-30SSY

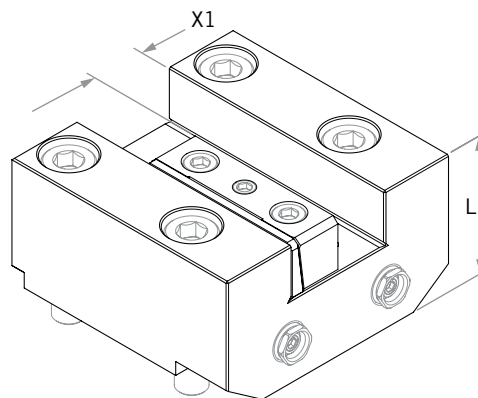
ACCESSORIES

| | | |
|-------------------|----------------|--------------|
| | | |
| REDUCTION SLEEVES | COOLANT NOZZLE | COOLANT PIPE |
| 13 | 13 | 13 |

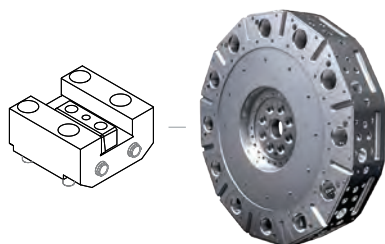
+ Coolant Option: Internal Coolant/External Coolant

Face Grooving

- ▶ Bolt-On Face Groove Holder for VB24 24 Station Turret. Inch & metric available. See tool/turret diagram below for compatible machines. Contact support@commandtool.com for more information.



| Face Grooving - IN | Part No. | X1 | L1 | Mfr. Part No. Equivalent |
|--------------------|-------------------|-------|-------|--------------------------|
| | 5.BMT19.05HAASV24 | 0.75" | 1.70" | BOT24FG-3/4 |
| | | | | |
| | | | | |
| Face Grooving - MM | Part No. | X1 | L1 | Mfr. Part No. Equivalent |
| | 5.BMT20HAASV24 | 20mm | 43mm | BOT24MFG-20 |
| | | | | |
| | | | | |



VB24 Turret
Standard For Machines:

- + ST-20SS, ST-20SSY
- + ST-30SS, ST-30SSY
- + DS-30SS, DS-30SSY

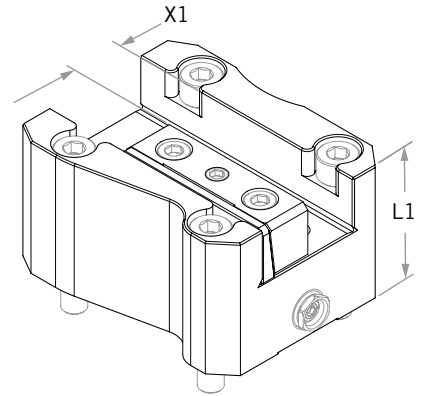
ACCESSORIES

| | | |
|--------------|----------------|--------------|
| | | |
| WEDGE CLAMPS | COOLANT NOZZLE | COOLANT PIPE |
| 12 | 13 | 13 |

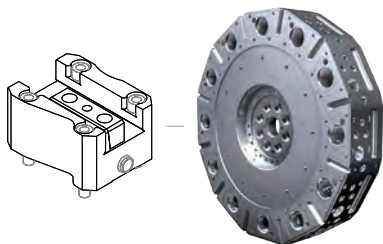
- + Coolant Option: External Coolant

Facing

- ▶ Bolt-On Facing Holder for VB24 24 Station Turret. Inch & metric available. See tool/turret diagram below for compatible machines. Contact support@commandtool.com for more information.



| Facing - IN | Part No. | X1 | L1 | Mfr. Part No. Equivalent |
|-------------|------------------------|-------|-------|--------------------------|
| | 5.BMT19.05HAASV24-TYP2 | 0.75" | 1.88" | BOT24ODF-3/4 |
| | | | | |
| | | | | |
| Facing - MM | Part No. | X1 | L1 | Mfr. Part No. Equivalent |
| | 5.BMT20HAASV24-TYP2 | 20mm | 48mm | BOT24MODF-20 |
| | | | | |
| | | | | |



VB24 Turret
 Standard For Machines:
 + ST-20SS, ST-20SSY
 + ST-30SS, ST-30SSY
 + DS-30SS, DS-30SSY

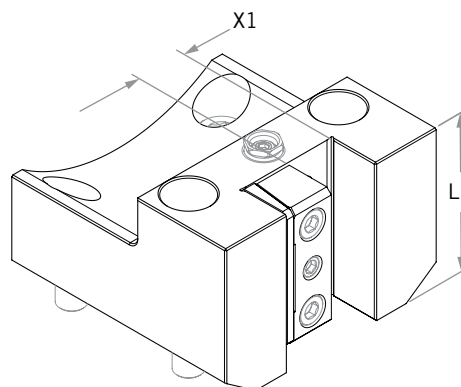
ACCESSORIES

| | | |
|--------------------|----------------------|--------------------|
| | | |
| WEDGE CLAMPS 12 | COOLANT NOZZLE 13 | COOLANT PIPE 13 |

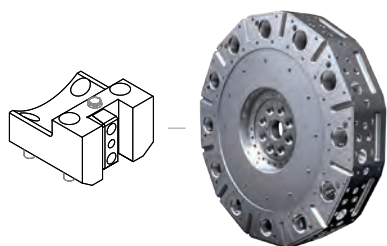
+ Coolant Option: External Coolant

Parting Tool Holder

- ▶ Bolt-On Parting Toolholder for VB24 24 Station Turret. Inch & metric available. See tool/turret diagram below for compatible machines. Contact support@commandtool.com for more information.



| Parting Tool - IN | Part No. | X1 | L1 | Mfr. Part No. Equivalent |
|-------------------|------------------------|-------|-------|--------------------------|
| | 4.BMT19.05HAASV24X58.4 | 0.75" | 2.09" | BOT240D-3/4 |
| | | | | |
| | | | | |
| Parting Tool - MM | Part No. | X1 | L1 | Mfr. Part No. Equivalent |
| | 4.BMT20HAASV24X58.4 | 20mm | 53mm | BOT24MOD-20 |
| | | | | |
| | | | | |



VB24 Turret
 Standard For Machines:
 + ST-20SS, ST-20SSY
 + ST-30SS, ST-30SSY
 + DS-30SS, DS-30SSY

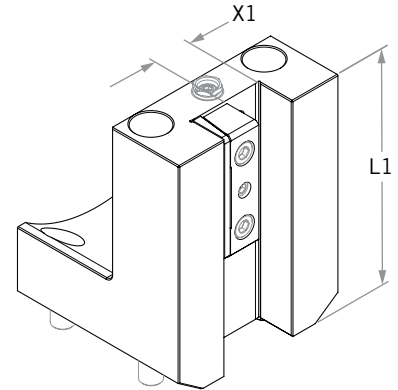
ACCESSORIES

| | | |
|--------------|----------------|--------------|
| | | |
| WEDGE CLAMPS | COOLANT NOZZLE | COOLANT PIPE |
| 12 | 13 | 13 |

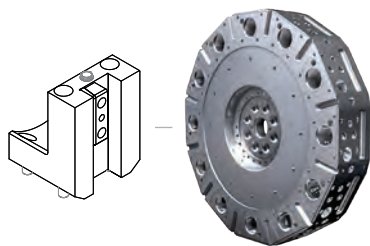
- + Coolant Option: External Coolant

Extended Parting Tool

- ▶ Bolt-On Extended Parting Toolholder for VB24 24 Station Turret. Inch & metric available. See tool/turret diagram below for compatible machines. Contact support@commandtool.com for more information.



| Extended Parting Tool - IN | Part No. | X1 | L1 | Mfr. Part No. Equivalent |
|----------------------------|-------------------------|-------|-------|--------------------------|
| | 4.BMT19.05HAASV24X115.6 | 0.75" | 4.34" | BOT24EXTOD-3/4 |
| | | | | |
| | | | | |
| Extended Parting Tool - MM | Part No. | X1 | L1 | Mfr. Part No. Equivalent |
| | 4.BMT20HAASV24X115.6 | 20mm | 110mm | BOT24EXTMOD-20 |
| | | | | |
| | | | | |



VB24 Turret
 Standard For Machines:
 + ST-30SS, ST-30SSY
 + DS-30SS, DS-30SSY

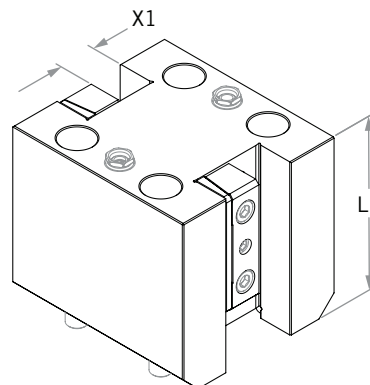
ACCESSORIES

| | | |
|--------------------|----------------------|--------------------|
| | | |
| WEDGE CLAMPS 12 | COOLANT NOZZLE 13 | COOLANT PIPE 13 |

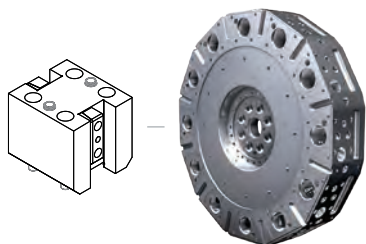
+ Coolant Option: External Coolant

Extended Twin Turn

- ▶ Bolt-On Extended Twin Turn Toolholder for VB24 24 Station Turret. Inch & metric available. See tool/turret diagram below for compatible machines. Contact support@commandtool.com for more information.



| Extended Twin Turn - IN | Part No. | X1 | L1 | Mfr. Part No. Equivalent |
|-------------------------|--------------------|-------|-------|--------------------------|
| | 15.BMT19.05HAASV24 | 0.75" | 3.31" | BOT24EXTOD-3/4T |
| | | | | |
| | | | | |
| Extended Twin Turn - MM | Part No. | X1 | L1 | Mfr. Part No. Equivalent |
| | 15.BMT20HAASV24 | 20mm | 84mm | BOT24EXTMOD-20T |
| | | | | |
| | | | | |



VB24 Turret
Standard For Machines:
+ ST-20SS, ST-20SSY
+ ST-30SS, ST-30SSY
+ DS-30SS, DS-30SSY

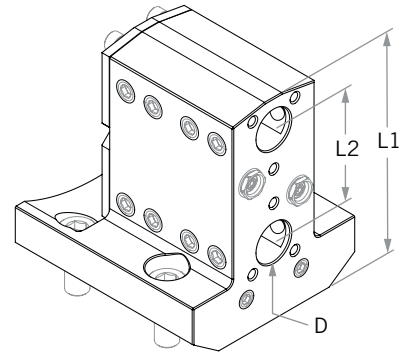
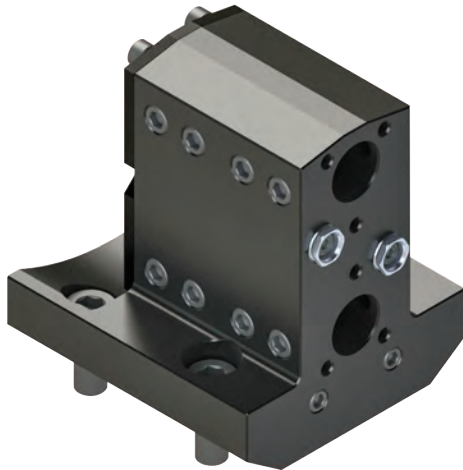
ACCESSORIES

| | | |
|---------------------|-----------------------|---------------------|
| | | |
| WEDGE CLAMPS | COOLANT NOZZLE | COOLANT PIPE |
| 12 | 13 | 13 |

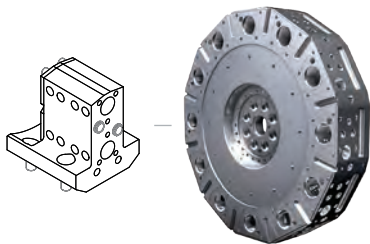
+ Coolant Option: External Coolant

Twin Bore

- ▶ Bolt-On Twin Boring Bar Holder for VB24 24 Station Turret. Inch & metric available. See tool/turret diagram below for compatible machines. Contact support@commandtool.com for more information.



| Twin Bore - IN | Part No. | D | L1 | L2 | Mfr. Part No. Equivalent |
|----------------|--------------------------------|-------|----------|---------|--------------------------|
| | 19.BMT19.05HAASV24X31.75X86.36 | 0.75" | 4.00" | 2.15" | BOT24ID-3/4T |
| | | | | | |
| Twin Bore - MM | Part No. | D | L1 | L2 | Mfr. Part No. Equivalent |
| | 19.BMT20HAASV24X31.75X86.36 | 20mm | 101.60mm | 54.60mm | BOT24MID-20T |
| | | | | | |



VB24 Turret
 Standard For Machines:
 + ST-20SS, ST-20SSY
 + ST-30SS, ST-30SSY
 + DS-30SS, DS-30SSY

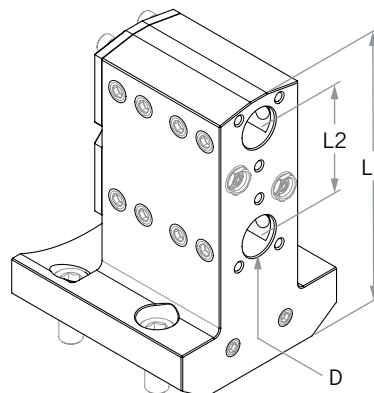
ACCESSORIES

| | | |
|--------------------------|-----------------------|---------------------|
| | | |
| REDUCTION SLEEVES | COOLANT NOZZLE | COOLANT PIPE |
| 13 | 13 | 13 |

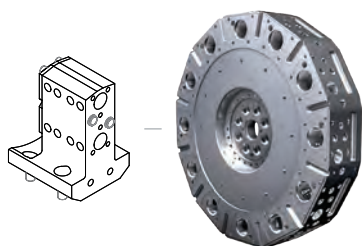
+ Coolant Option: Internal Coolant/External Coolant

Extended Twin Bore

- ▶ Bolt-On Extended Twin Boring Bar Holder for VB24 24 Station Turret. Inch & metric available. See tool/turret diagram below for compatible machines. Contact support@commandtool.com for more information.



| Extended Twin Bore - IN | Part No. | D | L1 | L2 | Mfr. Part No. Equivalent |
|-------------------------|---------------------------------|-------|----------|---------|--------------------------|
| | 19.BMT19.05HAASV24X60.40X115.01 | 0.75" | 5.13" | 2.15" | BOT24EXTID-3/4T |
| | | | | | |
| Extended Twin Bore - MM | Part No. | D | L1 | L2 | Mfr. Part No. Equivalent |
| | 19.BMT20HAASV24X60.40X115.01 | 20mm | 130.30mm | 54.60mm | BOT24EXTMID-20T |
| | | | | | |



VB24 Turret
 Standard For Machines:
 + ST-30SS, ST-30SSY
 + DS-30SS, DS-30SSY

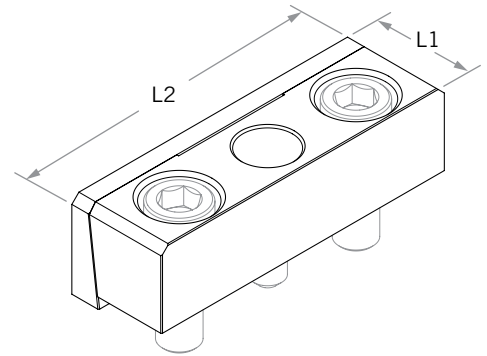
ACCESSORIES

| | | |
|-------------------|----------------|--------------|
| | | |
| REDUCTION SLEEVES | COOLANT NOZZLE | COOLANT PIPE |
| 13 | 13 | 13 |

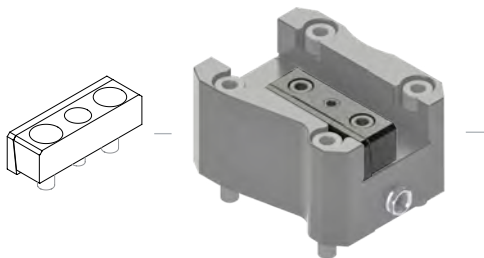
- + Coolant Option: Internal Coolant/External Coolant

Tool Wedge Clamp

- ▶ Wedge Clamp for VB24 24 Station Turret Tools (tools only). Inch & metric available. Included with all bolt-on tools requiring tool wedge clamp. Also available to order separately, please contact support@commandtool.com.



| Wedge Clamp - IN | Part No. | L1 (min) | L2 | Mfr. Part No. Equivalent |
|------------------|-----------|----------|-------|--------------------------|
| | EWS-10488 | 0.75" | 2.36" | |
| Wedge Clamp - MM | Part No. | L1 (min) | L2 | Mfr. Part No. Equivalent |
| | EWS-10489 | 20mm | 60mm | |



Wedge Clamp

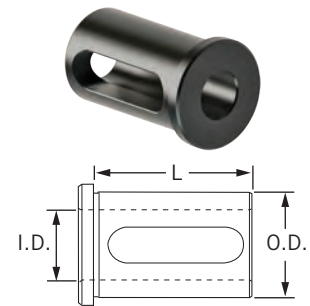
+ VB24 TOOLS ONLY

Reduction Sleeves

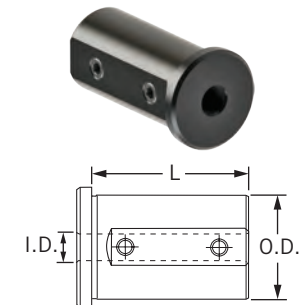
- ▶ Reduction Sleeves for VB24 Boring Bar Holders. Two styles are available: Set Screw for smaller bores and Slotted for larger bores. Please contact support@commandtool.com for more information.

| ITEM NUMBER | O.D. | I.D. | L | SLOTTED | SET SCREW |
|-----------------|------------------|------------------|------------------|---------|-----------|
| 28.19.0506.35S | 0.750 (19.05 mm) | 0.250 (06.35 mm) | 1.500 (31.75 mm) | | * |
| 28.19.0507.94S | 0.750 (19.05 mm) | 0.313 (07.94 mm) | 1.500 (31.75 mm) | | * |
| 28.19.0506.35SL | 0.750 (19.05 mm) | 0.250 (06.35 mm) | 2.000 (50.80 mm) | | * |
| 28.19.0507.94SL | 0.750 (19.05 mm) | 0.313 (07.94 mm) | 2.000 (50.80 mm) | | * |
| 28.25.4006.35S | 1.000 (25.40 mm) | 0.250 (06.35 mm) | 1.750 (44.45 mm) | | * |
| 28.25.4007.94S | 1.000 (25.40 mm) | 0.313 (07.94 mm) | 1.750 (44.45 mm) | | * |
| 28.25.4009.53S | 1.000 (25.40 mm) | 0.375 (09.53 mm) | 1.750 (44.45 mm) | | * |
| 28.25.4012.70S | 1.000 (25.40 mm) | 0.500 (12.70 mm) | 1.750 (44.45 mm) | | * |
| 28.25.4015.88S | 1.000 (25.40 mm) | 0.625 (15.88 mm) | 1.750 (44.45 mm) | * | |
| 28.25.4019.05S | 1.000 (25.40 mm) | 0.750 (19.05 mm) | 1.750 (44.45 mm) | * | |
| 28.25.4006.35SL | 1.000 (25.40 mm) | 0.250 (06.35 mm) | 2.750 (69.85 mm) | | * |
| 28.25.4007.94SL | 1.000 (25.40 mm) | 0.313 (07.94 mm) | 2.750 (69.85 mm) | | * |
| 28.25.4009.53SL | 1.000 (25.40 mm) | 0.375 (09.53 mm) | 2.750 (69.85 mm) | | * |
| 28.25.4012.70SL | 1.000 (25.40 mm) | 0.500 (12.70 mm) | 2.750 (69.85 mm) | | * |
| 28.25.4015.88SL | 1.000 (25.40 mm) | 0.625 (15.88 mm) | 2.750 (69.85 mm) | * | |
| 28.25.4019.05SL | 1.000 (25.40 mm) | 0.750 (19.05 mm) | 2.750 (69.85 mm) | * | |
| 28.31.7507.94S | 1.250 (31.75 mm) | 0.313 (07.94 mm) | 2.125 (53.98 mm) | | * |
| 28.31.7509.53S | 1.250 (31.75 mm) | 0.375 (09.53 mm) | 2.125 (53.98 mm) | | * |
| 28.31.7512.70S | 1.250 (31.75 mm) | 0.500 (12.70 mm) | 2.125 (53.98 mm) | | * |
| 28.31.7515.88S | 1.250 (31.75 mm) | 0.625 (15.88 mm) | 2.125 (53.98 mm) | * | |
| 28.31.7519.05S | 1.250 (31.75 mm) | 0.750 (19.05 mm) | 2.125 (53.98 mm) | * | |
| 28.31.7525.40S | 1.250 (31.75 mm) | 1.000 (25.40 mm) | 2.125 (53.98 mm) | * | |
| 28.31.7507.94SL | 1.250 (31.75 mm) | 0.313 (07.94 mm) | 3.250 (82.55 mm) | | * |
| 28.31.7509.53SL | 1.250 (31.75 mm) | 0.375 (09.53 mm) | 3.250 (82.55 mm) | | * |
| 28.31.7512.70SL | 1.250 (31.75 mm) | 0.500 (12.70 mm) | 3.250 (82.55 mm) | | * |
| 28.31.7515.88SL | 1.250 (31.75 mm) | 0.625 (15.88 mm) | 3.250 (82.55 mm) | * | |
| 28.31.7519.05SL | 1.250 (31.75 mm) | 0.750 (19.05 mm) | 3.250 (82.55 mm) | * | |
| 28.31.7525.40SL | 1.250 (31.75 mm) | 1.000 (25.40 mm) | 3.250 (82.55 mm) | * | |

SLOTTED REDUCTION SLEEVE



SET SCREW REDUCTION SLEEVE



View Reduction Sleeve Stock Levels And List Price On Our [WEBSITE](#)

- + Inside of flange face is ground to ensure full contact to tool block
- + Made from 8620 steel
- + All bushings are case hardened
- + I.D. and O.D. are precision ground to H6 tolerance
- + Laser marked for easy identification

▶ Coolant Nozzle

Part No. **EWS-10384**



Coolant Nozzle for Bolt-On Tools. Threaded coolant ball to accommodate copper coolant pipes. Available to order separately, please contact support@commandtool.com.

▶ Coolant Pipe

Part No. **KV6 50X1XM6**



Copper Coolant Pipe for Bolt-On Tool Coolant Nozzles. Available to order separately, please contact support@commandtool.com.

LIVE TOOL TURRET OPTIONS FOR HAAS LATHE MACHINES

TURRET TYPE LIVE TOOL COUPLING LENGTH AND MACHINE

LONG 130.25mm

VDI



SHORT COUPLING LENGTH
105mm

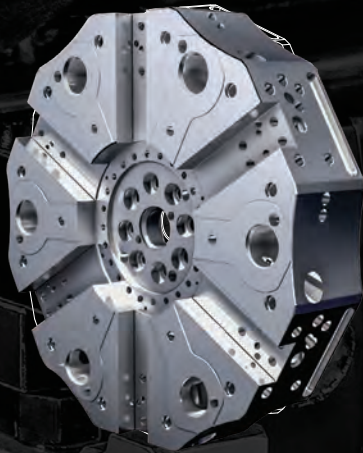
- + SL-20
- + SL-30

MEDIUM COUPLING LENGTH
118mm

- + ST-20
- + ST-20Y
- + ST-25
- + ST-25Y
- + ST-30
- + ST-30Y
- + ST-35
- + ST-35Y

MEDIUM 117.55mm

VB HYBRID



MEDIUM COUPLING LENGTH
118mm

- + ST-20
- + ST-20Y
- + ST-25
- + ST-25Y
- + ST-30
- + ST-30Y
- + ST-35
- + ST-35Y
- + DS-30
- + DS-30Y

SHORT 104.85mm

LONG COUPLING LENGTH
130mm

- + ST-40
- + ST-40L

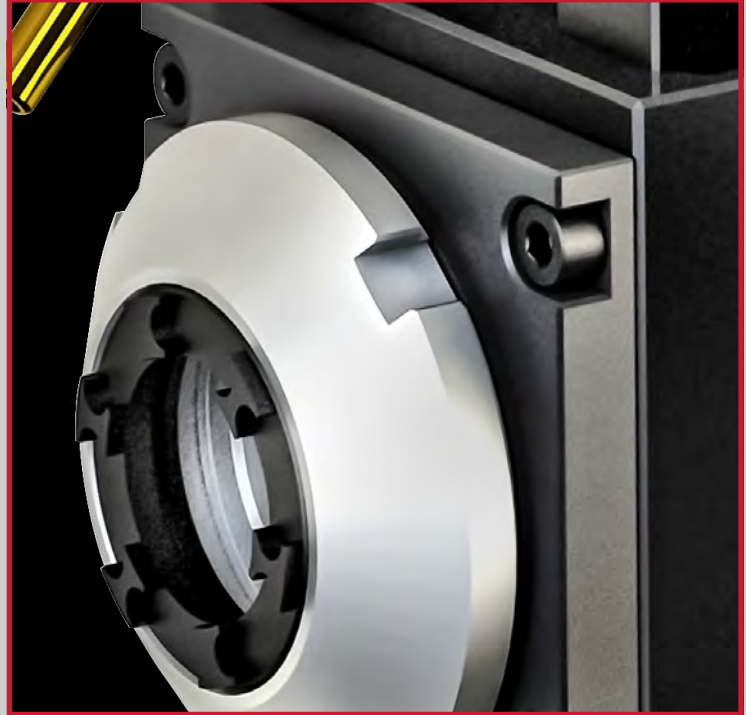
VB24



MEDIUM COUPLING LENGTH
118mm

- + ST-20SS
- + ST-20SSY
- + ST-30SS
- + ST-30SSY
- + DS-30SS
- + DS-30SSY

AXIAL AND RADIAL LIVE TOOL FEATURES



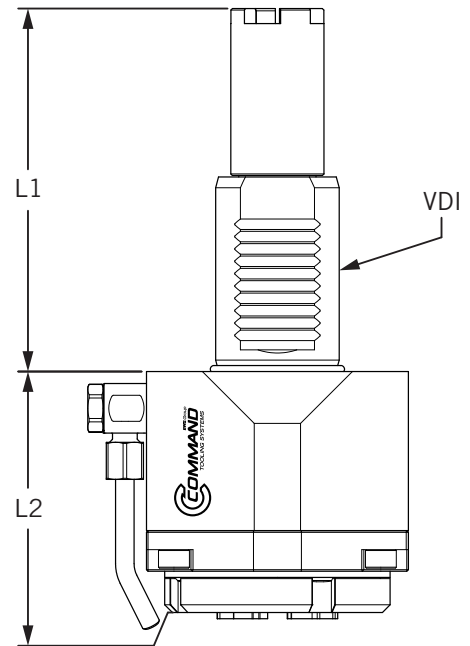
Oversized flange is integral to the spindle, providing debris protection for the front seal and bearings.



Collet pocket run-out is certified less than 0.005 mm—industry leading precision.

Axial

- ▶ Axial live tools for VDI, VB Hybrid & VB24 Turrets. Short, medium and long coupling lengths available. Contact support@commandtool.com for more information.



| ER32 Axial - MM | Part No. | Coupling Length | L1 | L2 | VDI | Collet Nut Type |
|-----------------|-------------------|-----------------|----------|-------|-----|-----------------|
| | 40.4032HASSL20IM | SHORT | 104.85mm | 78mm | 40 | Internal |
| | 40.4032HASSL20 | SHORT | 104.85mm | 112mm | 40 | External |
| | 40.4032HASSL40IM | MEDIUM | 117.55mm | 78mm | 40 | Internal |
| | 40.4032HASSL40 | MEDIUM | 117.55mm | 112mm | 40 | External |
| | 40.4032HASSL40HIM | LONG | 130.25mm | 78mm | 40 | Internal |
| | 40.4032HASSL40H | LONG | 130.25mm | 112mm | 40 | External |

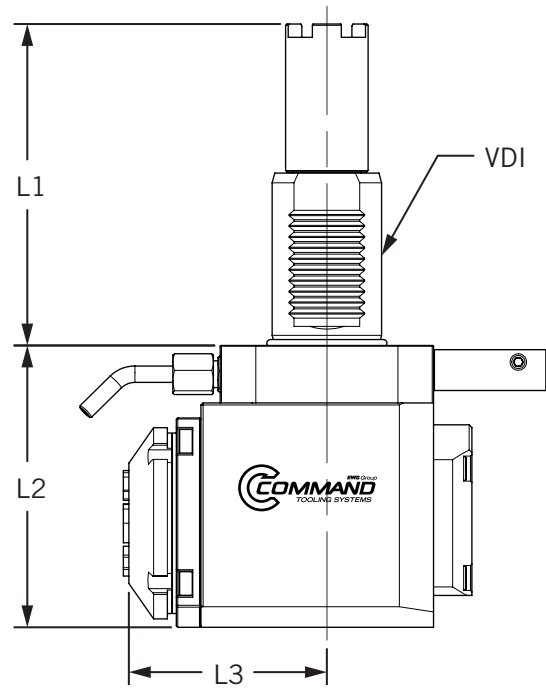
- + Coolant Option: External Coolant
- + Uses standard ER32 collets
- + 1:1 drive ratio
- + 8,000 max RPM
- + Run-out ≤ 0.005 mm

ACCESSORIES

| | | |
|-----------------------|-------------|--------------|
| | | |
| COLLETS & ACCESSORIES | COOLANT KIT | COOLANT PIPE |
| 18 | 18 | 18 |

Radial

- ▶ Radial live tools for VDI, VB Hybrid & VB24 Turrets. Short, medium and long coupling lengths available. Contact support@commandtool.com for more information.



| ER32 Radial - MM | Part No. | Coupling Length | L1 | L2 | L3 | VDI | Collet Nut Type |
|------------------|---------------------|-----------------|-----------|--------|-------|-----|-----------------|
| | 60.4032HAASSL20LIM | SHORT | 104.85 mm | 103 mm | 72 mm | 40 | Internal |
| | 60.4032HAASSL20L | SHORT | 104.85 mm | 103 mm | 84 mm | 40 | External |
| | 60.4032HAASSL40LIM | MEDIUM | 117.55 mm | 103 mm | 72 mm | 40 | Internal |
| | 60.4032HAASSL40L | MEDIUM | 117.55 mm | 103 mm | 84 mm | 40 | External |
| | 60.4032HAASSL40LGL | MEDIUM | 117.55 mm | 103 mm | 84 mm | 40 | External |
| | 60.4032HAASSL40HLIM | LONG | 130.25 mm | 103 mm | 72 mm | 40 | Internal |
| | 60.4032HAASSL40HL | LONG | 130.25 mm | 103 mm | 84 mm | 40 | External |

- + Coolant Option: External Coolant
- + Uses standard ER32 collets
- + 1:1 drive ratio
- + 8,000 max RPM
- + Run-out ≤ 0.005 mm

ACCESSORIES

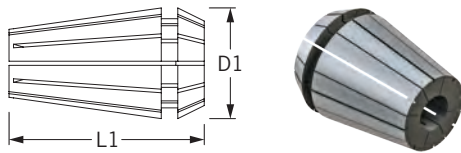
| | | |
|-----------------------|-------------|--------------|
| | | |
| COLLETS & ACCESSORIES | COOLANT KIT | COOLANT PIPE |
| 18 | 18 | 18 |

Accessories

- ER Standard collets have a 0.0002" T.I.R., with a clamping range of 0.039". Collet nut wrenches come with a drive square to adapt to torque wrench. Please contact support@commandtool.com for more information.

| ER32 Standard Collets Inch | | | | |
|----------------------------|---------------|----------------------|-------|-------|
| Part Number | Size Range | Ref. Size Range (mm) | L1 | D1 |
| ER32-F125 | 0.086 - 0.125 | 2.2 - 3.2 | 1.575 | 1.313 |
| ER32-F187 | 0.148 - 0.187 | 3.8 - 4.7 | 1.575 | 1.313 |
| ER32-F250 | 0.211 - 0.250 | 5.4 - 6.4 | 1.575 | 1.313 |
| ER32-F312 | 0.273 - 0.312 | 6.9 - 7.9 | 1.575 | 1.313 |
| ER32-F375 | 0.336 - 0.375 | 8.5 - 9.5 | 1.575 | 1.313 |
| ER32-F437 | 0.398 - 0.437 | 10.1 - 11.1 | 1.575 | 1.313 |
| ER32-F500 | 0.461 - 0.500 | 11.7 - 12.7 | 1.575 | 1.313 |
| ER32-F562 | 0.523 - 0.562 | 13.3 - 14.3 | 1.575 | 1.313 |
| ER32-F625 | 0.586 - 0.625 | 14.9 - 15.9 | 1.575 | 1.313 |
| ER32-F687 | 0.648 - 0.687 | 16.5 - 17.4 | 1.575 | 1.313 |
| ER32-F750 | 0.711 - 0.750 | 18.0 - 19.0 | 1.575 | 1.313 |

Inch Collet Set Part No. **ER32-11ST**



| ER32 Standard Collets Metric | | | | |
|------------------------------|-------------|----------------------|-------|-------|
| Part Number | Size Range | Ref. Size Range (in) | L1 | D1 |
| ER32-0300 | 2.0 - 3.0 | 0.079 - 0.118 | 1.575 | 1.313 |
| ER32-0400 | 3.0 - 4.0 | 0.118 - 0.157 | 1.575 | 1.313 |
| ER32-0500 | 4.0 - 5.0 | 0.157 - 0.197 | 1.575 | 1.313 |
| ER32-0600 | 5.0 - 6.0 | 0.197 - 0.236 | 1.575 | 1.313 |
| ER32-0700 | 6.0 - 7.0 | 0.236 - 0.276 | 1.575 | 1.313 |
| ER32-0800 | 7.0 - 8.0 | 0.276 - 0.315 | 1.575 | 1.313 |
| ER32-0900 | 8.0 - 9.0 | 0.315 - 0.354 | 1.575 | 1.313 |
| ER32-1000 | 9.0 - 10.0 | 0.354 - 0.394 | 1.575 | 1.313 |
| ER32-1100 | 10.0 - 11.0 | 0.394 - 0.433 | 1.575 | 1.313 |
| ER32-1200 | 11.0 - 12.0 | 0.433 - 0.472 | 1.575 | 1.313 |
| ER32-1300 | 12.0 - 13.0 | 0.472 - 0.512 | 1.575 | 1.313 |
| ER32-1400 | 13.0 - 14.0 | 0.512 - 0.551 | 1.575 | 1.313 |
| ER32-1500 | 14.0 - 15.0 | 0.551 - 0.591 | 1.575 | 1.313 |
| ER32-1600 | 15.0 - 16.0 | 0.591 - 0.630 | 1.575 | 1.313 |
| ER32-1700 | 16.0 - 17.0 | 0.630 - 0.669 | 1.575 | 1.313 |
| ER32-1800 | 17.0 - 18.0 | 0.669 - 0.709 | 1.575 | 1.313 |
| ER32-1900 | 18.0 - 19.0 | 0.709 - 0.748 | 1.575 | 1.313 |
| ER32-2000 | 19.0 - 20.0 | 0.748 - 0.787 | 1.575 | 1.313 |

Metric Collet Set Part No. **ER32-18ST**

View Standard Collet, Collet Nut/Wrench Stock Levels And List Price On Our [WEBSITE](#)

▶ Live Tool Wrench/Collet Nut

| WRENCH FOR INTERNAL NUT (AXIAL & RADIAL) | | INTERNAL COLLET NUT | WRENCH FOR EXTERNAL NUT (AXIAL & RADIAL) | | EXTERNAL COLLET NUT |
|---|----------------------------|-----------------------------|---|------------------------------|------------------------------|
| | | | | | |
| Part No: DIN1810 A-68X75 | Part No: EA 32 K | Part No: E 32 A K | Part No: DIN1810 B-58X62 | Part No: XCCW-D032 | Part No: XGSN-0032 |

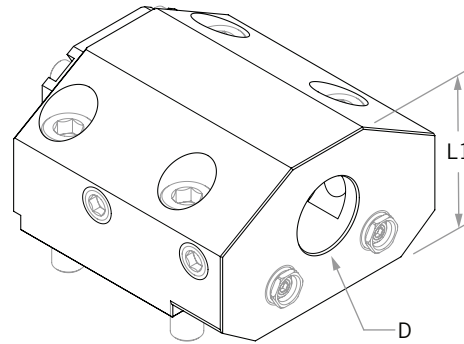
▶ Coolant Nozzle Kits

| | | | |
|--------------------------------|--------------------------------|--------------------------------|--------------------------------|
| | | | |
| Kit Part No. EWS-10315 | Kit Part No. EWS-10223 | Kit Part No. EWS-10316 | Kit Part No. EWS-10108 |
| Included Coolant Pipe: | Included Coolant Pipe: | Included Coolant Pipe: | Included Coolant Pipe: |
| | | | |
| Pipe Part No. EWS-10224 | Pipe Part No. EWS-10224 | Pipe Part No. EWS-10314 | Pipe Part No. EWS-10107 |

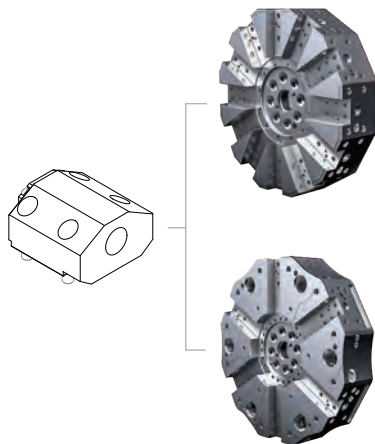
All Coolant Pipes are 6mm in diameter and may be ordered separately from the coolant kit

Boring Bar Holder

- ▶ Bolt-On Boring Bar Holder for **BOT** or **VB Hybrid** 12 Station Turrets. Inch & metric available. See tool/turret diagram below for compatible machines. Contact support@commandtool.com for more information.



| Boring Bar - IN | Part No. | D | L1 | Mfr. Part No. Equivalent |
|-----------------|--------------------|-------|-------|--------------------------|
| | 19.BMT25.4HAASV12 | 1.00" | 2.55" | BOT20ID-1 |
| | 19.BMT31.75HAASV12 | 1.25" | 2.55" | BOT20ID-1_1/4 |
| | 19.BMT38.1HAASV12 | 1.50" | 2.55" | BOT20ID-1_1/2 |
| | 19.BMT50.8HAASV12 | 2.00" | 2.55" | BOT20ID-2 |
| Boring Bar - MM | Part No. | D | L1 | Mfr. Part No. Equivalent |
| | 19.BMT25HAASV12 | 25 mm | 65 mm | BOT20MID-25 |
| | 19.BMT32HAASV12 | 32 mm | 65 mm | BOT20MID-32 |
| | 19.BMT40HAASV12 | 40 mm | 65 mm | BOT20MID-40 |
| | 19.BMT50HAASV12 | 50 mm | 65 mm | BOT20MID-50 |



BOT Turret
Standard For Machines:
+ ST-20, ST-25
+ ST-30, ST-35

VB Turret
Standard For Machines:
+ ST-20Y, ST-25Y
+ ST-30Y, ST-35Y
+ DS-30, DS-30Y

VB Turret Optional
For Machines:
+ ST-20, ST-25
+ ST-30, ST-35

ACCESSORIES

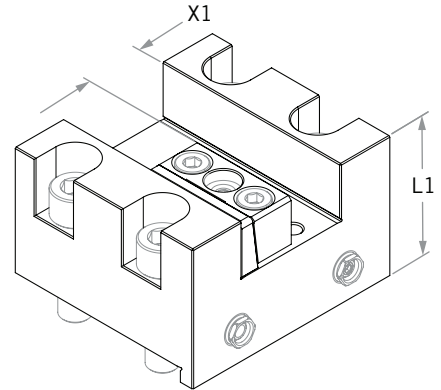
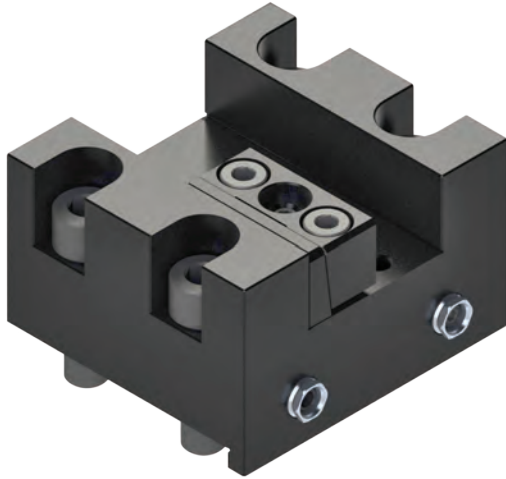
| | | |
|--------------------------|-----------------------|---------------------|
| | | |
| REDUCTION SLEEVES | COOLANT NOZZLE | COOLANT PIPE |
| 28 | <?> | <?> |

+ Coolant Option: Internal Coolant/External Coolant

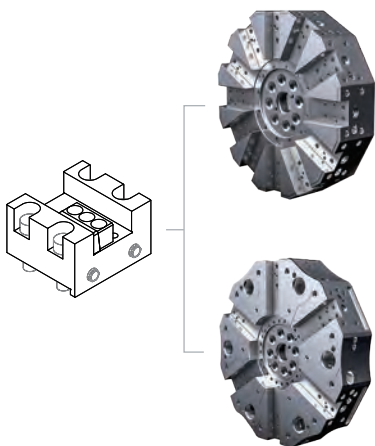
BOT or VB Hybrid // Boring Bar

Face Grooving

- ▶ Bolt-On Face Grooving Holder for **BOT** or **VB Hybrid** 12 Station Turrets. Inch & metric available. See tool/turret diagram below for compatible machines. Contact support@commandtool.com for more information.



| Face Grooving - IN | Part No. | X1 | L1 | Mfr. Part No. Equivalent |
|--------------------|------------------|-------|-------|--------------------------|
| | 5.BMT25.4HAASV12 | 1.00" | 2.20" | BOT20F/G |
| | | | | |
| | | | | |
| Face Grooving - MM | Part No. | X1 | L1 | Mfr. Part No. Equivalent |
| | 5.BMT25HAASV12 | 25mm | 56mm | BOT20MFG-25 |
| | | | | |
| | | | | |



BOT Turret
Standard For Machines:
+ ST-20, ST-25
+ ST-30, ST-35

VB Turret
Standard For Machines:
+ ST-20Y, ST-25Y
+ ST-30Y, ST-35Y
+ DS-30, DS-30Y

VB Turret **Optional**
For Machines:
+ ST-20, ST-25
+ ST-30, ST-35

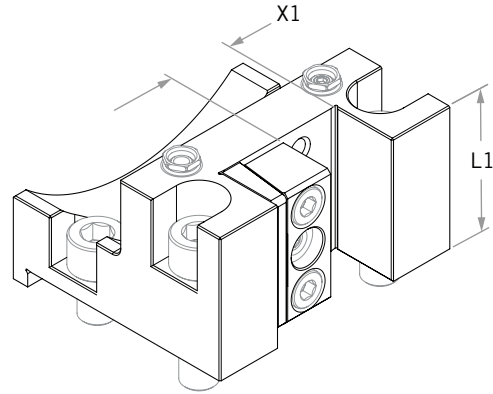
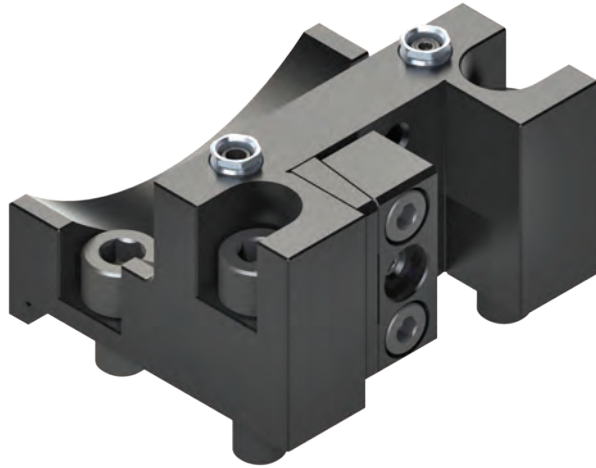
+ Coolant Option: External Coolant

ACCESSORIES

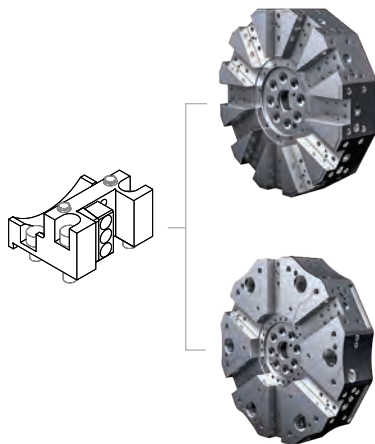
| | | |
|---------------------|-----------------------|---------------------|
| | | |
| WEDGE CLAMPS | COOLANT NOZZLE | COOLANT PIPE |
| 29 | 29 | 29 |

Parting Tool

- ▶ Bolt-On Parting Toolholder for **BOT** or **VB Hybrid** 12 Station Turrets. Inch & metric available. See tool/turret diagram below for compatible machines. Contact support@commandtool.com for more information.



| Parting Tool - IN | Part No. | X1 | L1 | Mfr. Part No. Equivalent |
|-------------------|-----------------------|-------|-------|--------------------------|
| | 4.BMT25.4HAASV12X54.6 | 1.00" | 2.15" | BOT200D-1 |
| | | | | |
| | | | | |
| Parting Tool - MM | Part No. | X1 | L1 | Mfr. Part No. Equivalent |
| | 4.BMT25HAASV12X54.6 | 25 mm | 55 mm | BOT20MOD-25 |
| | | | | |
| | | | | |



BOT Turret
Standard For Machines:
+ ST-20, ST-25
+ ST-30, ST-35

VB Turret
Standard For Machines:
+ ST-20Y, ST-25Y
+ ST-30Y, ST-35Y
+ DS-30, DS-30Y

VB Turret **Optional**
For Machines:
+ ST-20, ST-25
+ ST-30, ST-35

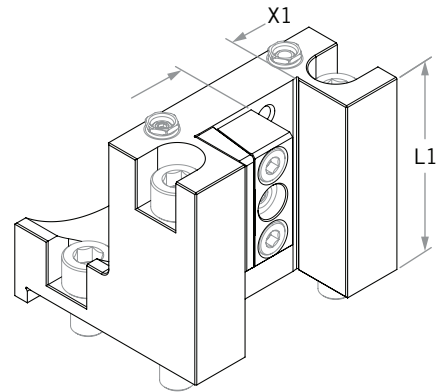
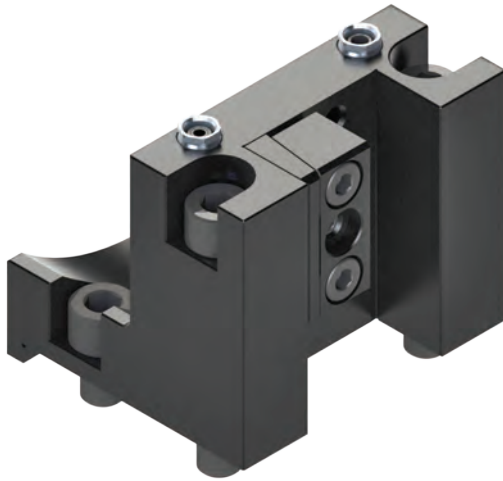
+ Coolant Option: External Coolant

ACCESSORIES

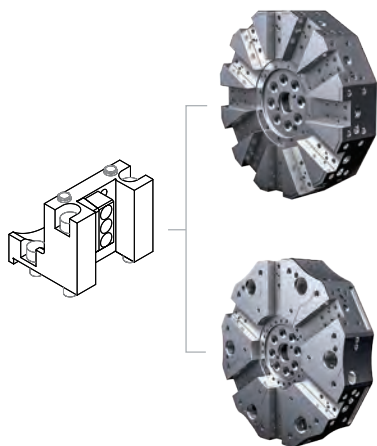
| | | |
|---------------------|-----------------------|---------------------|
| | | |
| WEDGE CLAMPS | COOLANT NOZZLE | COOLANT PIPE |
| 29 | 29 | 29 |

Extended Parting Tool

- ▶ Bolt-On Extended Parting Toolholder for **BOT** or **VB Hybrid** 12 Station Turrets. Inch & metric available. See tool/turret diagram below for compatible machines. Contact support@commandtool.com for more information.



| Extended Parting Tool - IN | Part No. | X1 | L1 | Mfr. Part No. Equivalent |
|----------------------------|-----------------------|-------|-------|--------------------------|
| | 4.BMT25.4HAASV12X83.2 | 1.00" | 3.30" | BOT20EXTOD-1 |
| | | | | |
| | | | | |
| Extended Parting Tool - MM | Part No. | X1 | L1 | Mfr. Part No. Equivalent |
| | 4.BMT25HAASV12X83.2 | 25mm | 84mm | BOT20EXTMOD-25 |
| | | | | |
| | | | | |



BOT Turret
Standard For Machines:
+ ST-20, ST-25
+ ST-30, ST-35

VB Turret
Standard For Machines:
+ ST-20Y, ST-25Y
+ ST-30Y, ST-35Y
+ DS-30, DS-30Y

VB Turret Optional
For Machines:
+ ST-20, ST-25
+ ST-30, ST-35

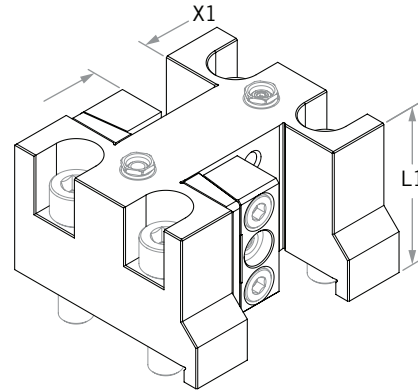
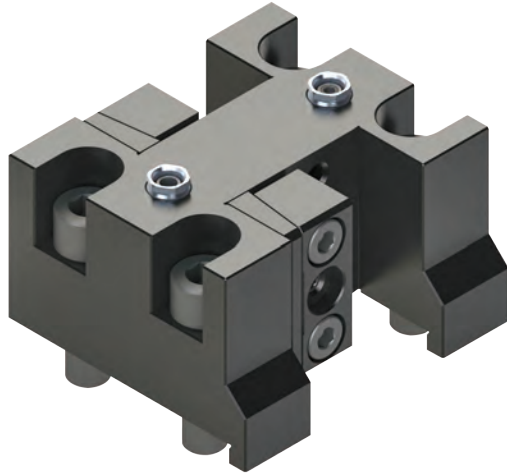
+ Coolant Option: External Coolant

ACCESSORIES

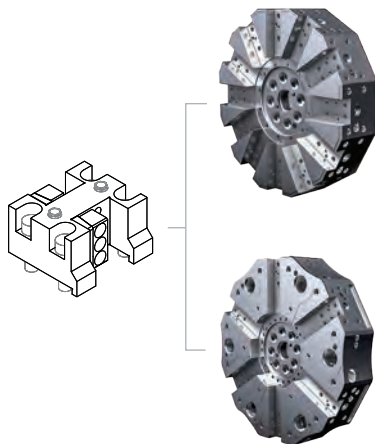
| | | |
|---------------------|-----------------------|---------------------|
| | | |
| WEDGE CLAMPS | COOLANT NOZZLE | COOLANT PIPE |
| 29 | 29 | 29 |

Twin Turn

- ▶ Bolt-On Twin Turn Holder for **BOT** or **VB Hybrid** 12 Station Turrets. Inch & metric available. See tool/turret diagram below for compatible machines. Contact support@commandtool.com for more information.



| Twin Turn - IN | Part No. | X1 | L1 | Mfr. Part No. Equivalent |
|----------------|------------------------|-------|-------|--------------------------|
| | 15.BMT25.4HAASV12X54.6 | 1.00" | 2.15" | BOT200D-1T |
| | | | | |
| Twin Turn - MM | Part No. | X1 | L1 | Mfr. Part No. Equivalent |
| | 15.BMT25HAASV12X54.6 | 25 mm | 55 mm | BOT20MOD-25T |
| | | | | |



BOT Turret
Standard For Machines:
+ ST-20, ST-25
+ ST-30, ST-35

VB Turret
Standard For Machines:
+ ST-20Y, ST-25Y
+ ST-30Y, ST-35Y
+ DS-30, DS-30Y

VB Turret **Optional**
For Machines:
+ ST-20, ST-25
+ ST-30, ST-35

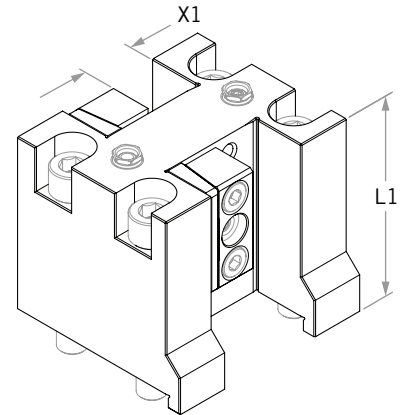
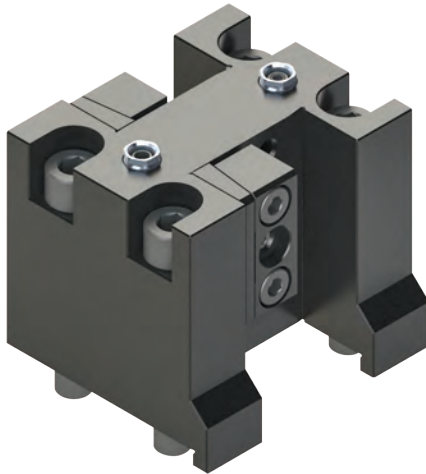
+ Coolant Option: External Coolant

ACCESSORIES

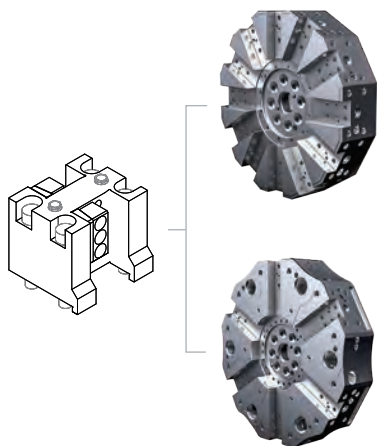
| | | |
|---------------------|-----------------------|---------------------|
| | | |
| WEDGE CLAMPS | COOLANT NOZZLE | COOLANT PIPE |
| 29 | 29 | 29 |

Extended Twin Turn

- ▶ Bolt-On Extended Twin Turn Holder for **BOT** or **VB Hybrid** 12 Station Turrets. Inch & metric available. See tool/turret diagram below for compatible machines. Contact support@commandtool.com for more information.



| Extended Twin Turn - IN | Part No. | X1 | L1 | Mfr. Part No. Equivalent |
|-------------------------|------------------------|-------|-------|--------------------------|
| | 15.BMT25.4HAASV12X83.2 | 1.00" | 3.30" | BOT20EXTOD-1T |
| | | | | |
| Extended Twin Turn - MM | Part No. | X1 | L1 | Mfr. Part No. Equivalent |
| | 15.BMT25HAASV12X83.2 | 25mm | 84mm | BOT20EXTMOD-25T |
| | | | | |
| | | | | |



BOT Turret
Standard For Machines:
+ ST-20, ST-25
+ ST-30, ST-35

VB Turret
Standard For Machines:
+ ST-20Y, ST-25Y
+ ST-30Y, ST-35Y
+ DS-30, DS-30Y

VB Turret Optional
For Machines:
+ ST-20, ST-25
+ ST-30, ST-35

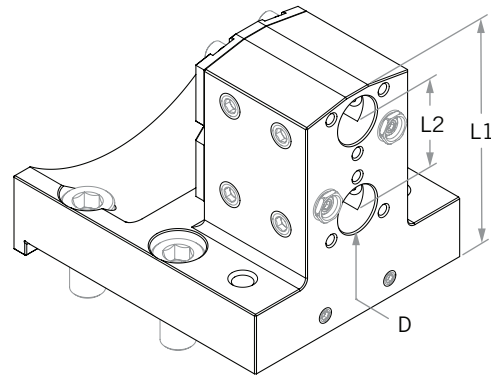
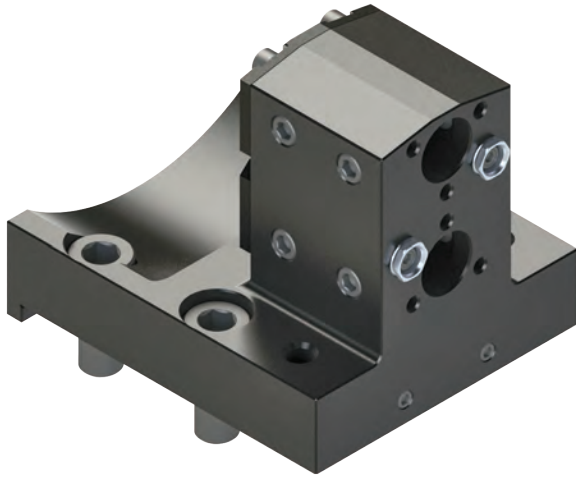
+ Coolant Option: External Coolant

ACCESSORIES

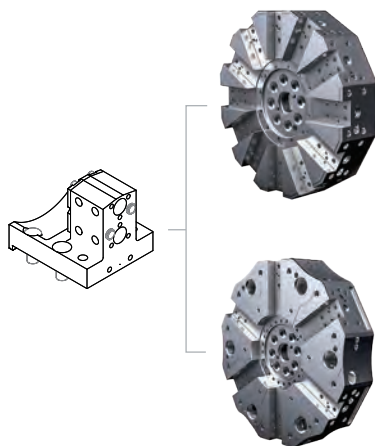
| | | |
|---------------------|-----------------------|---------------------|
| | | |
| WEDGE CLAMPS | COOLANT NOZZLE | COOLANT PIPE |
| 29 | 29 | 29 |

Twin Bore

- ▶ Bolt-On Twin Bore Holder for **BOT** or **VB Hybrid** 12 Station Turrets. Inch & metric available. See tool/turret diagram below for compatible machines. Contact support@commandtool.com for more information.



| Twin Bore - IN | Part No. | D | L1 | L2 | Mfr. Part No. Equivalent |
|----------------|--------------------------------|-------|---------|---------|--------------------------|
| | 19.BMT19.05HAASV12X45.72X83.82 | 0.75" | 3.80" | 1.50" | BOT20ID-3/4T |
| | | | | | |
| | | | | | |
| Twin Bore - MM | Part No. | D | L1 | L2 | Mfr. Part No. Equivalent |
| | 19.BMT20HAASV12X45.72X83.82 | 20mm | 96.50mm | 38.10mm | BOT20MID-20T |
| | | | | | |
| | | | | | |



BOT Turret
Standard For Machines:
+ ST-20, ST-25
+ ST-30, ST-35

VB Turret
Standard For Machines:
+ ST-20Y, ST-25Y
+ ST-30Y, ST-35Y
+ DS-30, DS-30Y

VB Turret **Optional**
For Machines:
+ ST-20, ST-25
+ ST-30, ST-35

ACCESSORIES

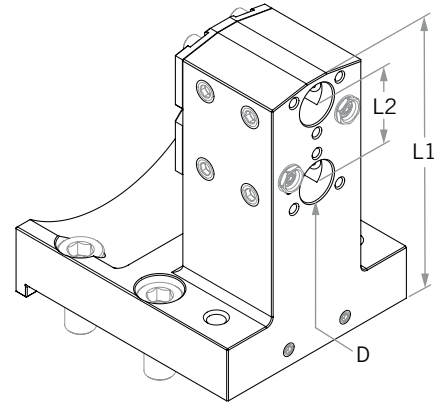
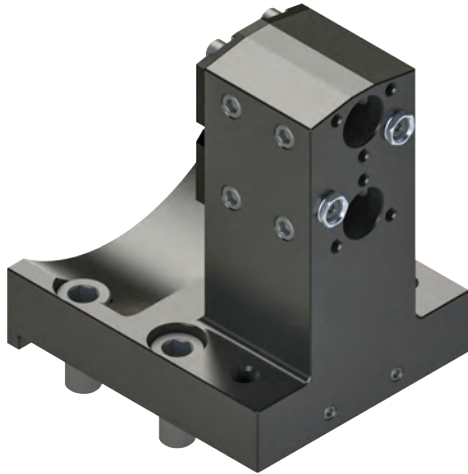
| | | |
|--------------------------|-----------------------|---------------------|
| | | |
| REDUCTION SLEEVES | COOLANT NOZZLE | COOLANT PIPE |
| 28 | 29 | 29 |

+ Coolant Option: Internal Coolant/External Coolant

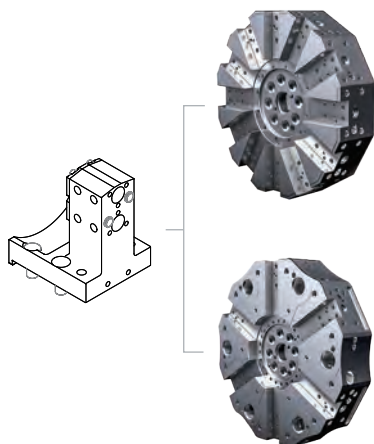
BOT or VB Hybrid // Twin Bore

Extended Twin Bore

- ▶ Bolt-On Extended Twin Bore Holder for **BOT** or **VB Hybrid** 12 Station Turrets. Inch & metric available. See tool/turret diagram below for compatible machines. Contact support@commandtool.com for more information.



| Extended Twin Bore - IN | Part No. | D | L1 | L2 | Mfr. Part No. Equivalent |
|-------------------------|---------------------------------|-------|----------|---------|--------------------------|
| | 19.BMT19.05HAASV12X82.55X120.65 | 0.75" | 5.25" | 1.50" | BOT20EXTID-3/4T |
| | | | | | |
| | | | | | |
| Extended Twin Bore - MM | Part No. | D | L1 | L2 | Mfr. Part No. Equivalent |
| | 19.BMT20HAASV12X82.55X120.65 | 20mm | 133.40mm | 38.10mm | BOT20EXTMID-20T |
| | | | | | |
| | | | | | |



BOT Turret
Standard For Machines:
+ ST-20, ST-25
+ ST-30, ST-35

VB Turret
Standard For Machines:
+ ST-20Y, ST-25Y
+ ST-30Y, ST-35Y
+ DS-30, DS-30Y

VB Turret **Optional**
For Machines:
+ ST-20, ST-25
+ ST-30, ST-35

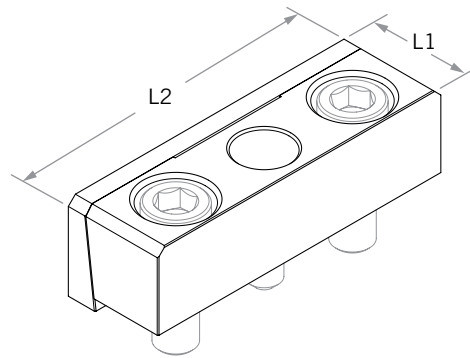
ACCESSORIES

| | | |
|--------------------------|-----------------------|---------------------|
| | | |
| REDUCTION SLEEVES | COOLANT NOZZLE | COOLANT PIPE |
| 28 | 29 | 29 |

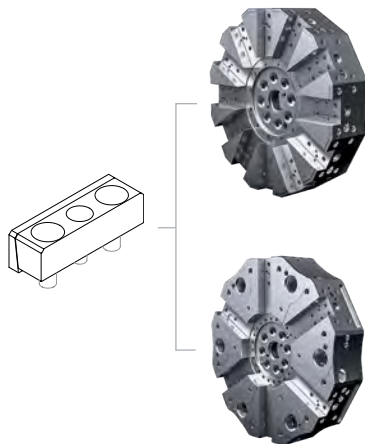
+ Coolant Option: Internal Coolant/External Coolant

Turret Wedge Clamp

- ▶ Wedge Clamp for **BOT** or **VB Hybrid** 12 Station Turret. See Page 29 for Bolt-On **Tool** Wedge Clamp. Also available to order separately, please contact support@commandtool.com for more information.



| Turret Wedge Clamp - IN | Part No. | L1 (min) | L2 | Mfr. Part No. Equivalent |
|-------------------------|-----------|----------|-------|--------------------------|
| | EWS-10441 | 1.00" | 3.15" | |
| | | | | |
| | | | | |
| Turret Wedge Clamp - MM | Part No. | L1 (min) | L2 | Mfr. Part No. Equivalent |
| | EWS-10492 | 25mm | 80mm | |
| | | | | |
| | | | | |



BOT Turret
Standard For Machines:
+ ST-20, ST-25
+ ST-30, ST-35

VB Turret
Standard For Machines:
+ ST-20Y, ST-25Y
+ ST-30Y, ST-35Y
+ DS-30, DS-30Y

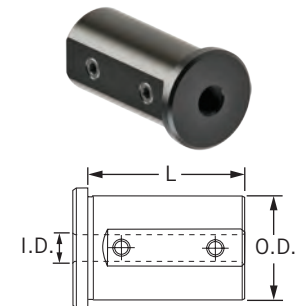
VB Turret **Optional**
For Machines:
+ ST-20, ST-25
+ ST-30, ST-35

Reduction Sleeves

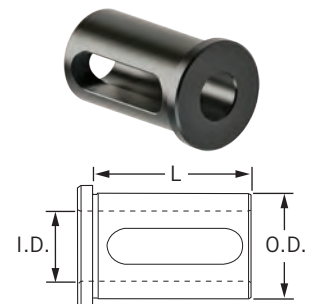
- Reduction Sleeves for **BOT, VB Hybrid** 12 Station, or **BMT65** Turret Tools. 2 styles are available: Set Screw for smaller bores and Slotted for larger bores. Please contact support@commandtool.com for more information.

| Part Number | O.D. | I.D. | L | Slotted | Set Screw |
|-----------------|------------------|------------------|------------------|---------|-----------|
| 28.19.0506.35S | 0.750 (19.05 mm) | 0.250 (06.35 mm) | 1.500 (31.75 mm) | | * |
| 28.19.0507.94S | 0.750 (19.05 mm) | 0.313 (07.94 mm) | 1.500 (31.75 mm) | | * |
| 28.19.0506.35SL | 0.750 (19.05 mm) | 0.250 (06.35 mm) | 2.000 (50.80 mm) | | * |
| 28.19.0507.94SL | 0.750 (19.05 mm) | 0.313 (07.94 mm) | 2.000 (50.80 mm) | | * |
| 28.25.4006.35S | 1.000 (25.40 mm) | 0.250 (06.35 mm) | 1.750 (44.45 mm) | | * |
| 28.25.4007.94S | 1.000 (25.40 mm) | 0.313 (07.94 mm) | 1.750 (44.45 mm) | | * |
| 28.25.4009.53S | 1.000 (25.40 mm) | 0.375 (09.53 mm) | 1.750 (44.45 mm) | | * |
| 28.25.4012.70S | 1.000 (25.40 mm) | 0.500 (12.70 mm) | 1.750 (44.45 mm) | | * |
| 28.25.4015.88S | 1.000 (25.40 mm) | 0.625 (15.88 mm) | 1.750 (44.45 mm) | * | |
| 28.25.4019.05S | 1.000 (25.40 mm) | 0.750 (19.05 mm) | 1.750 (44.45 mm) | * | |
| 28.25.4006.35SL | 1.000 (25.40 mm) | 0.250 (06.35 mm) | 2.750 (69.85 mm) | | * |
| 28.25.4007.94SL | 1.000 (25.40 mm) | 0.313 (07.94 mm) | 2.750 (69.85 mm) | | * |
| 28.25.4009.53SL | 1.000 (25.40 mm) | 0.375 (09.53 mm) | 2.750 (69.85 mm) | | * |
| 28.25.4012.70SL | 1.000 (25.40 mm) | 0.500 (12.70 mm) | 2.750 (69.85 mm) | | * |
| 28.25.4015.88SL | 1.000 (25.40 mm) | 0.625 (15.88 mm) | 2.750 (69.85 mm) | * | |
| 28.25.4019.05SL | 1.000 (25.40 mm) | 0.750 (19.05 mm) | 2.750 (69.85 mm) | * | |
| 28.31.7507.94S | 1.250 (31.75 mm) | 0.313 (07.94 mm) | 2.125 (53.98 mm) | | * |
| 28.31.7509.53S | 1.250 (31.75 mm) | 0.375 (09.53 mm) | 2.125 (53.98 mm) | | * |
| 28.31.7512.70S | 1.250 (31.75 mm) | 0.500 (12.70 mm) | 2.125 (53.98 mm) | | * |
| 28.31.7515.88S | 1.250 (31.75 mm) | 0.625 (15.88 mm) | 2.125 (53.98 mm) | * | |
| 28.31.7519.05S | 1.250 (31.75 mm) | 0.750 (19.05 mm) | 2.125 (53.98 mm) | * | |
| 28.31.7525.40S | 1.250 (31.75 mm) | 1.000 (25.40 mm) | 2.125 (53.98 mm) | * | |
| 28.31.7507.94SL | 1.250 (31.75 mm) | 0.313 (07.94 mm) | 3.250 (82.55 mm) | | * |
| 28.31.7509.53SL | 1.250 (31.75 mm) | 0.375 (09.53 mm) | 3.250 (82.55 mm) | | * |
| 28.31.7512.70SL | 1.250 (31.75 mm) | 0.500 (12.70 mm) | 3.250 (82.55 mm) | | * |
| 28.31.7515.88SL | 1.250 (31.75 mm) | 0.625 (15.88 mm) | 3.250 (82.55 mm) | * | |
| 28.31.7519.05SL | 1.250 (31.75 mm) | 0.750 (19.05 mm) | 3.250 (82.55 mm) | * | |
| 28.31.7525.40SL | 1.250 (31.75 mm) | 1.000 (25.40 mm) | 3.250 (82.55 mm) | * | |
| 28.38.1007.94S | 1.500 (38.10 mm) | 0.313 (07.94 mm) | 2.500 (63.50 mm) | | * |
| 28.38.1009.53S | 1.500 (38.10 mm) | 0.375 (09.53 mm) | 2.500 (63.50 mm) | | * |
| 28.38.1012.70S | 1.500 (38.10 mm) | 0.500 (12.70 mm) | 2.500 (63.50 mm) | | * |
| 28.38.1015.88S | 1.500 (38.10 mm) | 0.625 (15.88 mm) | 2.500 (63.50 mm) | * | |
| 28.38.1019.05S | 1.500 (38.10 mm) | 0.750 (19.05 mm) | 2.500 (63.50 mm) | * | |
| 28.38.1025.40S | 1.500 (38.10 mm) | 1.000 (25.40 mm) | 2.500 (63.50 mm) | * | |
| 28.38.1031.75S | 1.500 (38.10 mm) | 1.250 (31.75 mm) | 2.500 (63.50 mm) | * | |
| 28.50.8009.53S | 2.000 (50.80 mm) | 0.375 (09.53 mm) | 3.000 (76.20 mm) | | * |
| 28.50.8012.70S | 2.000 (50.80 mm) | 0.500 (12.70 mm) | 3.000 (76.20 mm) | | * |
| 28.50.8015.88S | 2.000 (50.80 mm) | 0.625 (15.88 mm) | 3.000 (76.20 mm) | * | |
| 28.50.8019.05S | 2.000 (50.80 mm) | 0.750 (19.05 mm) | 3.000 (76.20 mm) | * | |
| 28.50.8025.40S | 2.000 (50.80 mm) | 1.000 (25.40 mm) | 3.000 (76.20 mm) | * | |
| 28.50.8031.75S | 2.000 (50.80 mm) | 1.250 (31.75 mm) | 3.000 (76.20 mm) | * | |
| 28.50.8038.10S | 2.000 (50.80 mm) | 1.500 (38.10 mm) | 3.000 (76.20 mm) | * | |
| 28.50.8044.45S | 2.000 (50.80 mm) | 1.750 (44.45 mm) | 3.000 (76.20 mm) | * | |

SET SCREW REDUCTION SLEEVE



SLOTTED REDUCTION SLEEVE

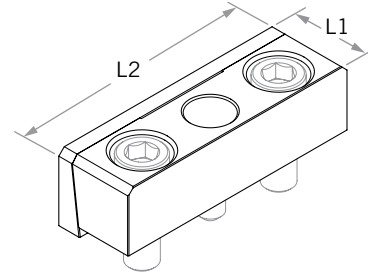


View Reduction Sleeve Stock Levels And List Price On Our [WEBSITE](http://www.commandtool.com)

- + Inside of flange face is ground to ensure full contact to tool block
- + Made from 8620 steel
- + All bushings are case hardened
- + I.D. and O.D. are precision ground to H6 tolerance
- + Laser marked for easy identification

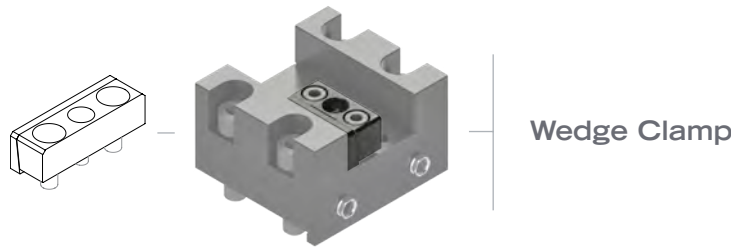
Bolt-On Tool Wedge Clamp

- ▶ Wedge Clamp for **BOT** or **VB Hybrid** 12 Station Turret Bolt-On Tools. Included with all bolt-on tools requiring tool wedge clamp. Also available to order separately, please contact support@commandtool.com for more information.



| Wedge Clamp - IN | Part No. | L1 (min) | L2 | Mfr. Part No. Equivalent |
|------------------|-----------|----------|-------|--------------------------|
| | EWS-10490 | 1.00" | 1.96" | |
| Wedge Clamp - MM | Part No. | L1 (min) | L2 | Mfr. Part No. Equivalent |
| | EWS-10491 | 25mm | 50mm | |

SEE PG 27 FOR TURRET WEDGE CLAMP



- ▶ Wedge Clamp for **BMT65** 12 Station Turret Bolt-On Tools. Included with all bolt-on tools requiring tool wedge clamp. Also available to order separately, please contact support@commandtool.com for more information.

| Wedge Clamp - IN | Part No. | L1 (min) | L2 | Mfr. Part No. Equivalent |
|------------------|-----------|----------|-------|--------------------------|
| | EWS-11287 | 1.00" | 2.36" | |
| Wedge Clamp - MM | Part No. | L1 (min) | L2 | Mfr. Part No. Equivalent |
| | EWS-11288 | 25mm | 60mm | |

▶ Coolant Nozzle

Part No. **EWS-10384**



Coolant Nozzle for Bolt-On Tools. Threaded coolant ball to accommodate copper coolant pipes. Available to order separately, please contact support@commandtool.com.

▶ Coolant Pipe

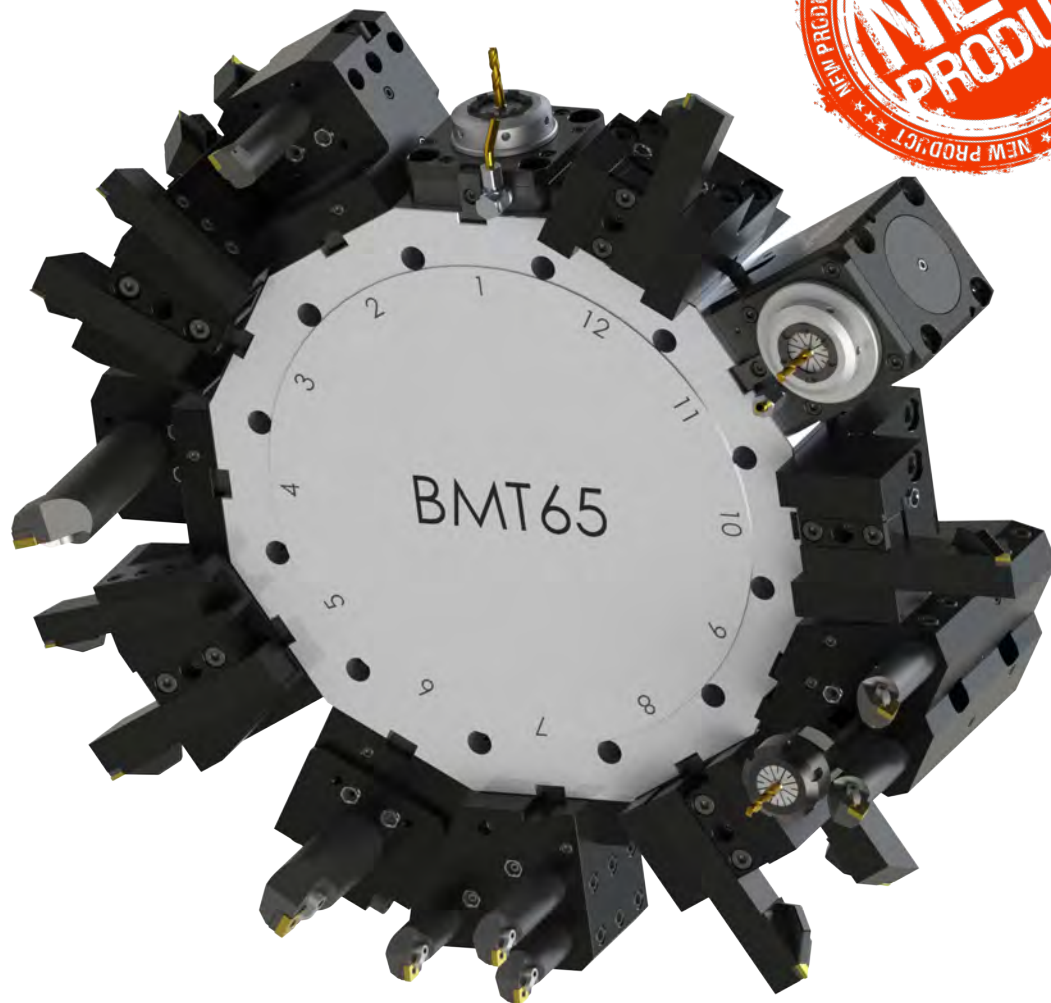
Part No. **KV6 50X1XM6**



Copper Coolant Pipe for Bolt-On Tool Coolant Nozzles. Available to order separately, please contact support@commandtool.com.

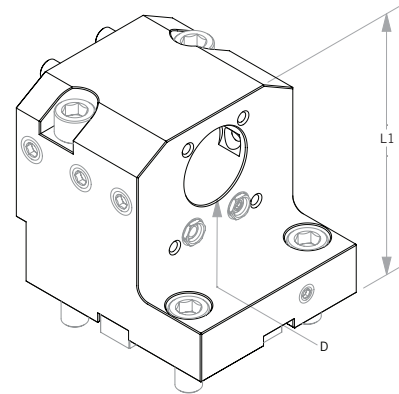
BMT65 Turret Tools

- ▶ Introducing Command's new line of BMT65 Static and Live Tools
- ▶ Our 15° half-index tools can increase your turret tooling capacity



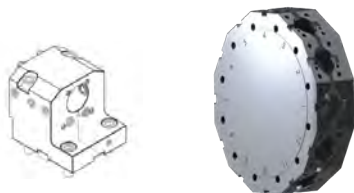
Boring Bar Holder

- ▶ Bolt-On Boring Bar Holder for **BMT65** 12 Station Turret. Inch & metric available. See tool/turret diagram below for compatible machines. Contact support@commandtool.com for more information.



| Boring Bar - IN | Part No. | D | L1 | Mfr. Part No. Equivalent |
|-----------------|---------------------|-------|-------|--------------------------|
| | 19.BMT25.4HAAS65Z15 | 1.00" | 3.94" | BMT65ID-1 |
| | 19.BMT38.1HAAS65Z15 | 1.50" | 3.94" | BMT65ID-1_1/2 |

| Boring Bar - MM | Part No. | D | L1 | Mfr. Part No. Equivalent |
|-----------------|-------------------|-------|--------|--------------------------|
| | 19.BMT25HAAS65Z15 | 25 mm | 100 mm | BMT65MID-25 |
| | 19.BMT40HAAS65Z15 | 40 mm | 100 mm | BMT65MID-40 |



BMT65 Turret

Standard For Machines:

- + ST-20Y, ST-25Y
- + ST-30Y, ST-35Y
- + DS-30Y

BMT65 Turret **Optional**
For Machines:

- + ST-20, ST-25
- + ST-30, ST-35

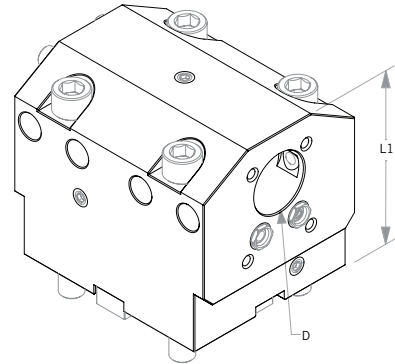
ACCESSORIES

| | | |
|-------------------|----------------|--------------|
| | | |
| REDUCTION SLEEVES | COOLANT NOZZLE | COOLANT PIPE |
| 28 | 29 | 29 |

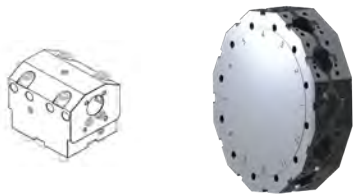
- + Coolant Option: Internal Coolant/External Coolant

Twin Boring Bar Holder

- ▶ Bolt-On Twin Boring Bar Holder for BMT65 12 Station Turret. Inch & metric available. See tool/turret diagram below for compatible machines. Contact support@commandtool.com for more information.



| Twin Boring Bar - IN | Part No. | D | L1 | Mfr. Part No. Equivalent |
|----------------------|--------------------|-------|-------|--------------------------|
| | 17.BMT31.75DHAAS65 | 1.25" | 3.94" | BMT65ID-1_1/4T |
| | | | | |
| | | | | |
| Twin Boring Bar - MM | Part No. | D | L1 | Mfr. Part No. Equivalent |
| | 17.BMT32DHAAS65 | 32mm | 100mm | BMT65MID-32T |
| | | | | |
| | | | | |



BMT65 Turret

Standard For Machines:

- + ST-20Y, ST-25Y
- + ST-30Y, ST-35Y
- + DS-30Y

BMT65 Turret **Optional**
For Machines:

- + ST-20, ST-25
- + ST-30, ST-35

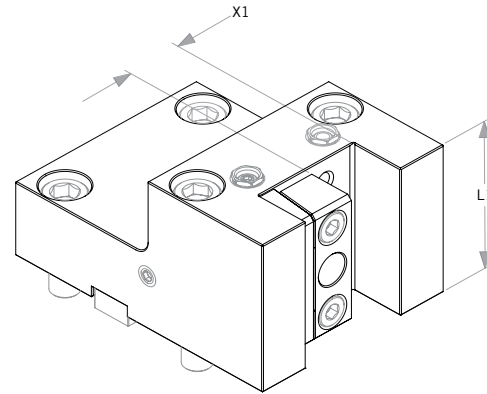
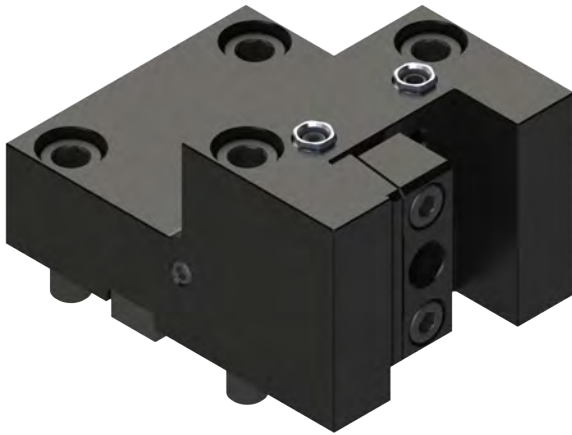
ACCESSORIES

| | | |
|---|---|---|
|  |  |  |
| REDUCTION SLEEVES | COOLANT NOZZLE | COOLANT PIPE |
| 28 | 29 | 29 |

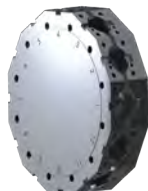
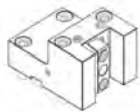
- + Coolant Option: Internal Coolant/External Coolant

Turning Tool

- ▶ Bolt-On Turning Tool for BMT65 12 Station Turret. Inch & metric available. See tool/turret diagram below for compatible machines. Contact support@commandtool.com for more information.



| Turning Tool - IN | Part No. | X1 | L1 | Mfr. Part No. Equivalent |
|-------------------|-----------------|-------|-------|--------------------------|
| | 4.BMT25.4HAAS65 | 1.00" | 2.76" | BMT65OD-1 |
| | | | | |
| | | | | |
| Turning Tool - MM | Part No. | X1 | L1 | Mfr. Part No. Equivalent |
| | 4.BMT25HAAS65 | 25 mm | 70 mm | BMT65MOD-25 |
| | | | | |
| | | | | |



BMT65 Turret

Standard For Machines:

- + ST-20Y, ST-25Y
- + ST-30Y, ST-35Y
- + DS-30Y

BMT65 Turret **Optional**
For Machines:

- + ST-20, ST-25
- + ST-30, ST-35

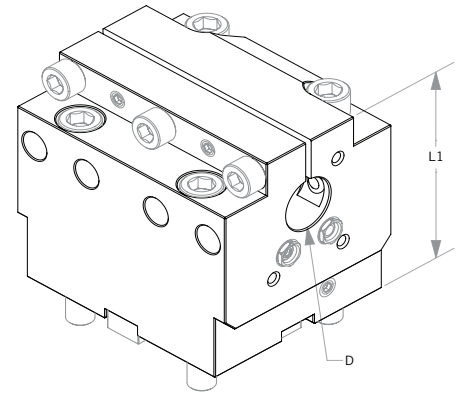
+ Coolant Option: External Coolant

ACCESSORIES

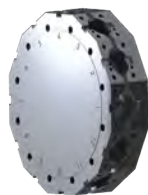
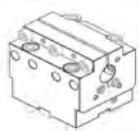
| | | |
|--------------|----------------|--------------|
| | | |
| WEDGE CLAMPS | COOLANT NOZZLE | COOLANT PIPE |
| 29 | 29 | 29 |

Split Block Boring Bar Holder

- ▶ Bolt-On Split Block Boring Bar Holder for **BMT65** 12 Station Turret. Inch & metric available. See tool/turret diagram below for compatible machines. Contact support@commandtool.com for more information.



| Split Block Boring Bar - IN | Part No. | X1 | L1 | Mfr. Part No. Equivalent |
|-----------------------------|------------------|-------|---------|--------------------------|
| | 20.BMT25.4HAAS65 | 1.00" | 4.15" | BMT65ID-1S |
| | 20.BMT38.1HAAS65 | 1.50" | 4.41" | BMT65ID-1_1/2S |
| | 20.BMT50.8HAAS65 | 2.00" | 4.67" | BMT65ID-2S |
| Split Block Boring Bar - MM | Part No. | X1 | L1 | Mfr. Part No. Equivalent |
| | 20.BMT25HAAS65 | 25 mm | 105.5mm | BMT65MID-25S |
| | 20.BMT40HAAS65 | 40 mm | 112mm | BMT65MID-40S |
| | 20.BMT50HAAS65 | 50 mm | 118.5mm | BMT65MID-50S |



BMT65 Turret

Standard For Machines:

- + ST-20Y, ST-25Y
- + ST-30Y, ST-35Y
- + DS-30Y

BMT65 Turret **Optional**
For Machines:

- + ST-20, ST-25
- + ST-30, ST-35

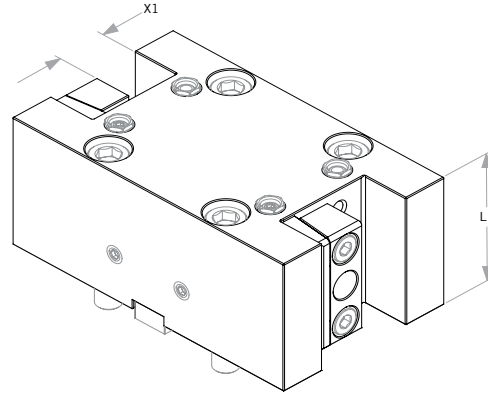
ACCESSORIES

| | | |
|--------------------------|-----------------------|---------------------|
| | | |
| REDUCTION SLEEVES | COOLANT NOZZLE | COOLANT PIPE |
| 28 | 29 | 29 |

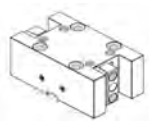
- + Coolant Option: Internal Coolant/External Coolant

Twin Turning Tool

- ▶ Bolt-On Twin Turning Tool for **BMT65** 12 Station Turret. Inch & metric available. See tool/turret diagram below for compatible machines. Contact support@commandtool.com for more information.



| Twin Turn - IN | Part No. | X1 | L1 | Mfr. Part No. Equivalent |
|----------------|------------------|-------|-------|--------------------------|
| | 15.BMT25.4HAAS65 | 1.00" | 2.76" | BMT65OD-1T |
| | | | | |
| Twin Turn - MM | Part No. | X1 | L1 | Mfr. Part No. Equivalent |
| | 15.BMT25HAAS65 | 25 mm | 70 mm | BMT65MOD-25T |
| | | | | |
| | | | | |



BMT65 Turret

Standard For Machines:

- + ST-20Y, ST-25Y
- + ST-30Y, ST-35Y
- + DS-30Y

BMT65 Turret **Optional**
For Machines:

- + ST-20, ST-25
- + ST-30, ST-35

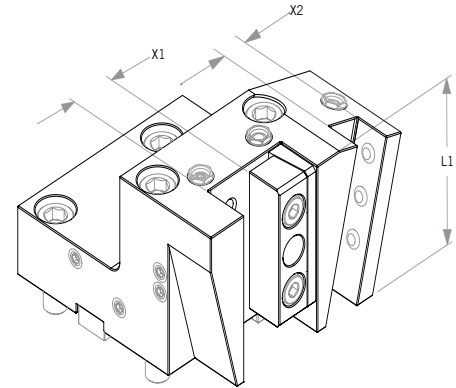
+ Coolant Option: External Coolant

ACCESSORIES

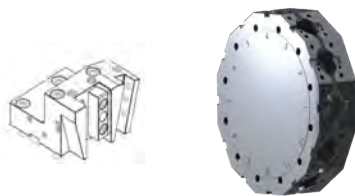
| | | |
|---------------------|-----------------------|---------------------|
| | | |
| WEDGE CLAMPS | COOLANT NOZZLE | COOLANT PIPE |
| 29 | 29 | 29 |

Half-Index Turning Tool

- ▶ Bolt-On Half-Index Turning Tool for BMT65 12 Station Turret. Inch & metric available. See tool/turret diagram below for compatible machines. Contact support@commandtool.com for more information.



| Half-Index Turning Tool - IN | Part No. | X1 | X2 | L1 | Mfr. Part No. Equivalent |
|------------------------------|---------------------------|-------|-------|-------|--------------------------|
| | 4.BMT25.4/19.05HAAS65-15° | 1.00" | 0.75" | 3.35" | BMT65OD24-1 |
| | | | | | |
| Half-Index Turning Tool - MM | Part No. | X1 | X2 | L1 | Mfr. Part No. Equivalent |
| | 4.BMT25/20HAAS65-15° | 25 mm | 20 mm | 85 mm | BMT65MOD24-25 |
| | | | | | |
| | | | | | |



BMT65 Turret

Standard For Machines:

- + ST-20Y, ST-25Y
- + ST-30Y, ST-35Y
- + DS-30Y

BMT65 Turret **Optional**
For Machines:

- + ST-20, ST-25
- + ST-30, ST-35

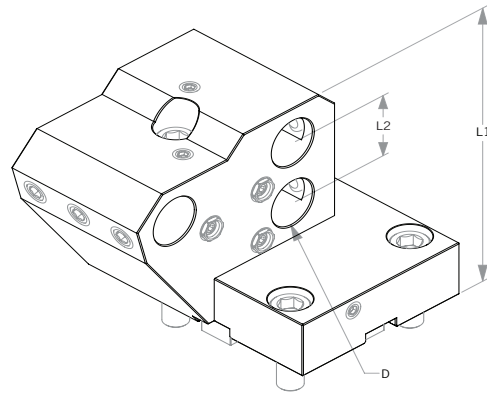
+ Coolant Option: External Coolant

ACCESSORIES

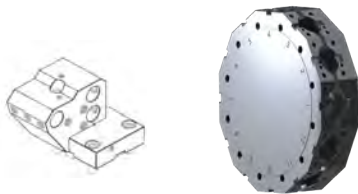
| | | |
|--------------|----------------|--------------|
| | | |
| WEDGE CLAMPS | COOLANT NOZZLE | COOLANT PIPE |
| 29 | 29 | 29 |

Half-Index Boring Bar Holder

- ▶ Bolt-On Half-Index Boring Bar Holder for **BMT65** 12 Station Turret. Inch & metric available. See tool/turret diagram below for compatible machines. Contact support@commandtool.com for more information.



| Half-Index Twin Boring Bar - IN | Part No. | D | L1 | L2 | Mfr. Part No. Equivalent |
|---------------------------------|----------------------------|-------|--------|-------|--------------------------|
| | 19.BMT25.4HAAS65X50X85-15° | 1.00" | 4.13" | 1.38" | BMT65ID24-1 |
| | | | | | |
| Half-Index Twin Boring Bar - MM | Part No. | D | L1 | L2 | Mfr. Part No. Equivalent |
| | 19.BMT25HAAS65X50X85-15° | 25 mm | 105 mm | 35 mm | BMT65MID24-25 |
| | | | | | |



BMT65 Turret

Standard For Machines:

- + ST-20Y, ST-25Y
- + ST-30Y, ST-35Y
- + DS-30Y

BMT65 Turret **Optional**
For Machines:

- + ST-20, ST-25
- + ST-30, ST-35

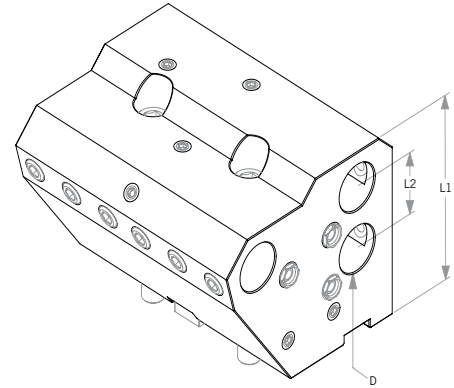
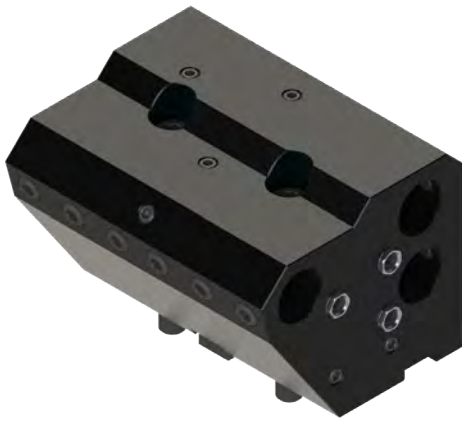
+ Coolant Option: External Coolant

ACCESSORIES

| | | |
|-------------------|----------------|--------------|
| | | |
| REDUCTION SLEEVES | COOLANT NOZZLE | COOLANT PIPE |
| 28 | 29 | 29 |

Extended Half-Index Twin Boring Bar Holder

- ▶ Bolt-On Extended Half-Index Twin Boring Bar Holder for BMT65 12 Station Turret. Inch & metric available. See tool/turret diagram below for compatible machines. Contact support@commandtool.com for more information.



| Extended Half-Index Twin BBH - IN | Part No. | D | L1 | L2 | Mfr. Part No. Equivalent |
|-----------------------------------|-----------------------------|-------|-------|-------|--------------------------|
| | 19.BMT25.4DHAAS65X50X85-15° | 1.00" | 2.20" | 1.38" | BMT65ID24-1T |
| | | | | | |
| | | | | | |

| Extended Half-Index Twin BBH - MM | Part No. | D | L1 | L2 | Mfr. Part No. Equivalent |
|-----------------------------------|--------------------------|------|------|------|--------------------------|
| | 19.BMT25HAAS65X50X85-15° | 25mm | 56mm | 35mm | BMT65MID24-25T |
| | | | | | |
| | | | | | |



BMT65 Turret

Standard For Machines:

- + ST-20Y, ST-25Y
- + ST-30Y, ST-35Y
- + DS-30Y

BMT65 Turret **Optional**
For Machines:

- + ST-20, ST-25
- + ST-30, ST-35

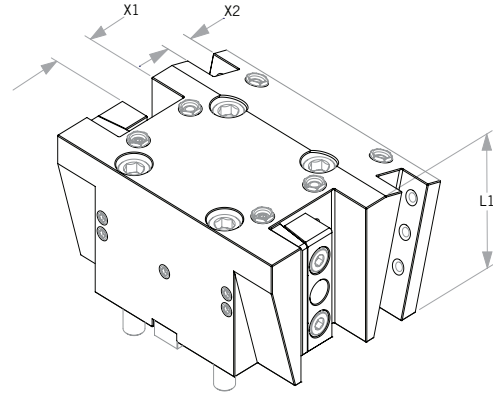
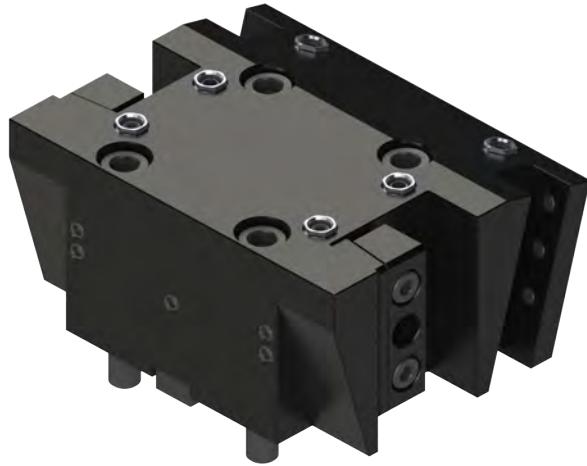
+ Coolant Option: External Coolant

ACCESSORIES

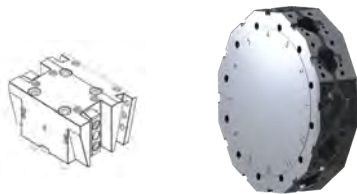
| | | |
|-------------------|----------------|--------------|
| | | |
| REDUCTION SLEEVES | COOLANT NOZZLE | COOLANT PIPE |
| 28 | 29 | 29 |

Half-Index Twin Turning Tool

- ▶ Bolt-On Half-Index Twin Turning Tool for **BMT65** 12 Station Turret. Inch & metric available. See tool/turret diagram below for compatible machines. Contact support@commandtool.com for more information.



| Half-Index Twin Turn - IN | Part No. | X1 | X2 | L1 | Mfr. Part No. Equivalent |
|---------------------------|----------------------------|-------|-------|-------|--------------------------|
| | 15.BMT25.4/19.05HAAS65-15° | 1.00" | 0.75" | 3.35" | BMT65OD24-1T |
| | | | | | |
| | | | | | |
| Half-Index Twin Turn - MM | Part No. | X1 | X2 | L1 | Mfr. Part No. Equivalent |
| | 15.BMT25/20HAAS65-15° | 25 mm | 20 mm | 85 mm | BMT65MOD24-25T |
| | | | | | |
| | | | | | |



BMT65 Turret

Standard For Machines:

- + ST-20Y, ST-25Y
- + ST-30Y, ST-35Y
- + DS-30Y

BMT65 Turret **Optional**
For Machines:

- + ST-20, ST-25
- + ST-30, ST-35

+ Coolant Option: External Coolant

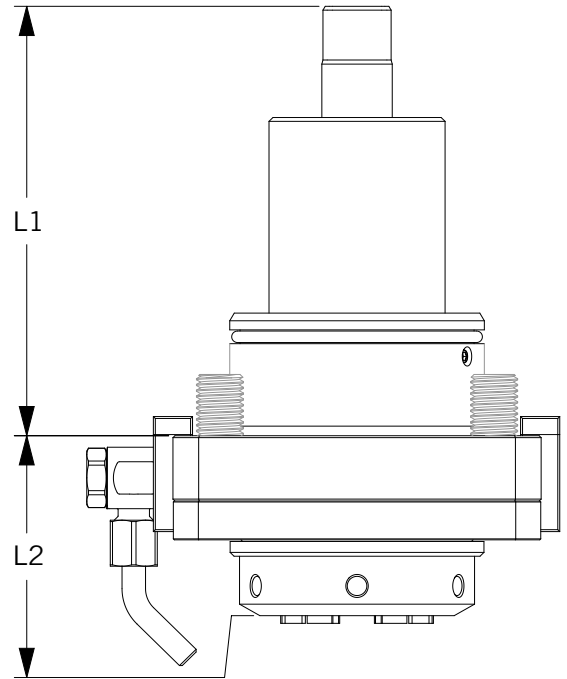
ACCESSORIES

| | | |
|--------------|----------------|--------------|
| | | |
| WEDGE CLAMPS | COOLANT NOZZLE | COOLANT PIPE |
| 29 | 29 | 29 |

BMT65 // Half-Index Twin Turning Tool

Axial

▶ Axial live tools for BMT65 12 Station Turret. Contact support@commandtool.com for more information.



| ER32 Axial | Part No. | L1 | L2 | BMT | Collet Nut Type |
|------------|-------------------|-------|------|-----|-----------------|
| | 40.65321809DW02IM | 112mm | 47mm | 65 | Internal |
| | | | | | |
| | | | | | |

- + Coolant Option: External Coolant
- + Uses standard ER32 collets
- + 1:1 drive ratio
- + 6,000 max RPM
- + Run-out ≤ 0.005 mm

ACCESSORIES

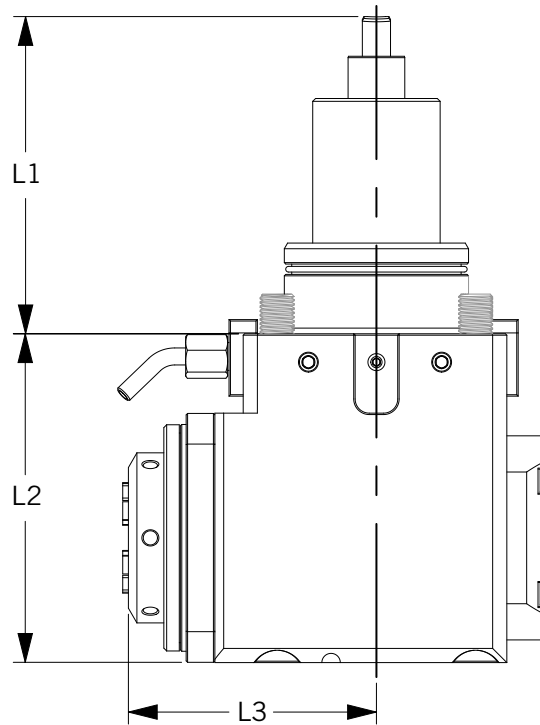
| | | |
|-----------------------|-------------|--------------|
| | | |
| COLLETS & ACCESSORIES | COOLANT KIT | COOLANT PIPE |
| 18 | 18 | 18 |

BMT65 Radial Live Tool



Radial

► Radial live tools for BMT65 12 Station Turret. Contact support@commandtool.com for more information.



| ER32 Radial | Part No. | L1 | L2 | L3 | BMT | Collet Nut Type |
|-------------|---------------------|-----------|--------|----------|-----|-----------------|
| | 60.65321809DW02GLIM | 111.90 mm | 116 mm | 87.50 mm | 65 | Internal |
| | | | | | | |
| | | | | | | |

- + Coolant Option: External Coolant
- + Uses standard ER32 collets
- + 1:1 drive ratio
- + 6,000 max RPM
- + Run-out ≤ 0.005 mm

ACCESSORIES

| | | |
|-----------------------|-------------|--------------|
| | | |
| COLLETS & ACCESSORIES | COOLANT KIT | COOLANT PIPE |
| 18 | 18 | 18 |

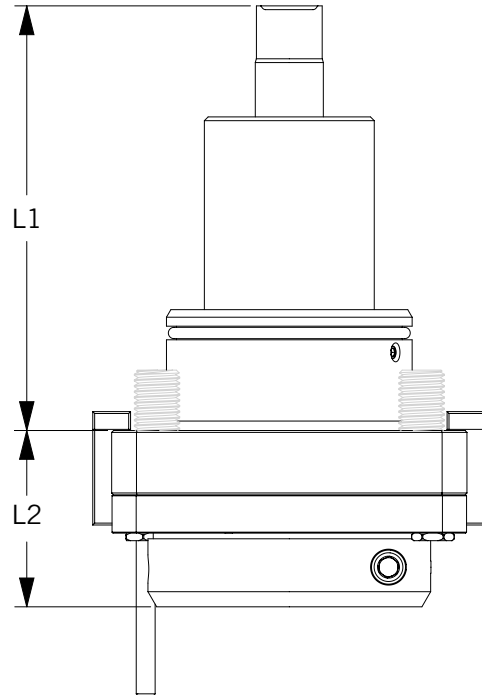
BMT65 Modular Turret Tools

- ▶ Command has once again taken a step forward to make tooling more flexible for your BMT65 turret with the new product offerings of the Varia, KM, and PSC static and live tools. Contact support@commandtool.com for more information about the modular tools.
- ▶ Reduce your tool set-up times by placing an order for these tools today!



Axial

► Varia axial live tool for BMT65 12 Station Turret. Contact support@commandtool.com for more information.



| Varia Axial | Part No. | L1 | L2 | BMT | Modular Type |
|-------------|------------------|-------|------|-----|--------------|
| | 40.65VX41809DW02 | 112mm | 47mm | 65 | Varia |
| | | | | | |
| | | | | | |

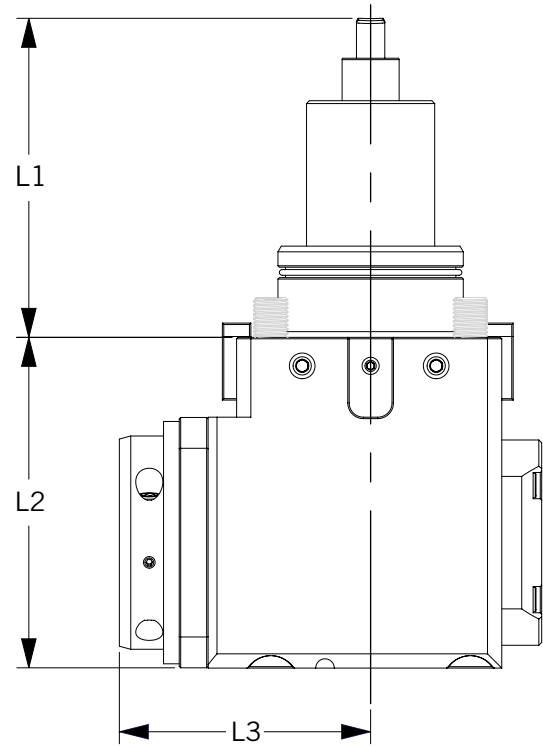
- + Coolant Option: External Coolant
- + Uses standard Varia inserts
- + 1:1 drive ratio
- + 6,000 max RPM
- + Run-out ≤ 0.005 mm

ACCESSORIES

| | | |
|----------|-------------|--------------|
| | | |
| ADAPTERS | COOLANT KIT | COOLANT PIPE |
| 45 | 18 | 18 |

Radial

► Varia radial live tool for BMT65 12 Station Turret. Contact support@commandtool.com for more information.



| Varia Radial | Part No. | L1 | L2 | L3 | BMT | Modular Type |
|--------------|--------------------|-----------|--------|----------|-----|--------------|
| | 60.65VX41809DW02GL | 111.90 mm | 116 mm | 88.13 mm | 65 | Varia |
| | | | | | | |
| | | | | | | |

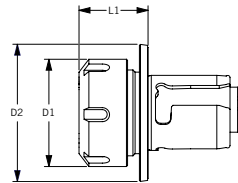
- + Coolant Option: External Coolant
- + Uses standard Varia inserts
- + 1:1 drive ratio
- + 6,000 max RPM
- + Run-out ≤ 0.005 mm

ACCESSORIES

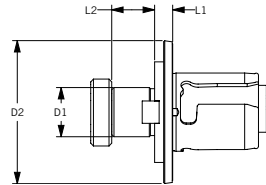
| | | |
|----------|-------------|--------------|
| | | |
| ADAPTERS | COOLANT KIT | COOLANT PIPE |
| 45 | 18 | 18 |

Varia Adapters

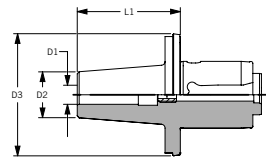
- ▶ Varia inserts for **BMT65** 12 Station Turret Modular Tools. For additional sizes, please contact support@commandtool.com.



| Collet Chuck Insert | | | | |
|---------------------|-------------|--------|------|------|
| Part Number | Collet Size | L1 | D1 | D2 |
| 31.VX416L23.5 | 16 | 23.5mm | 28mm | 64mm |
| 31.VX420L27 | 20 | 27mm | 34mm | 64mm |
| 31.VX425L28 | 25 | 28mm | 42mm | 64mm |
| 31.VX432L30 | 32 | 30mm | 50mm | 64mm |
| 31.VX440L57 | 40 | 57mm | 63mm | 64mm |



| Shell Mill Insert | | | | |
|-------------------|-----|--------|-------|------|
| Part Number | L1 | L2 | D1 | D2 |
| 42.VX412.7L08 | 8mm | 14.3mm | 1/2in | 64mm |
| 42.VX419.05L08 | 8mm | 17mm | 3/4in | 64mm |



| Shrink Fit Insert | | | | |
|---------------------|--------|-------|------|------|
| Part Number | L1 | D1 | D2 | D3 |
| 27.VX406.35L54SHR | 54mm | 1/4in | 21mm | 64mm |
| 27.VX409.53L54SHR | 54mm | 3/8in | 24mm | 64mm |
| 27.VX412.7L54SHR | 54mm | 1/2in | 24mm | 64mm |
| 27.VX415.88L54SHR | 54mm | 5/8in | 27mm | 64mm |
| 27.VX419.05L61.5SHR | 61.5mm | 3/4in | 33mm | 64mm |

Varia Starter Kit - VSK-VX4

- ▶ Starter kit comes with the following:

1 QTY - ER32 Collet Insert 1 QTY - VX4 Fit Up Aid 1 QTY - Torque Wrench 5 QTY - Varia Tool Tag



Part No:
31.VX432L30*

Part No:
MB-VX4*

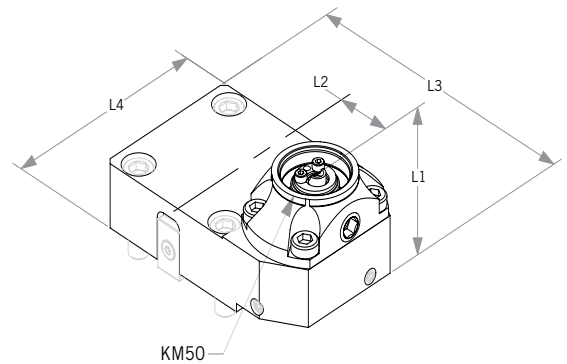
Part No:
DSV SW505.7NM*

Part No:
PT-VX4*

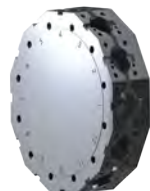
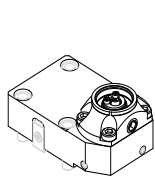
* Also available to order separately, please contact support@commandtool.com.

KM50 Turning Tool

- ▶ Bolt-On KM50 Turning Tool Holder for BMT65 12 Station Turret. See tool/turret diagram below for compatible machines. Contact support@commandtool.com for more information.



| KM50 Turning Tool | Part No. | L1 | L2 | L3 | L4 | Modular Type |
|-------------------|-----------------|------|-------|---------|-------|--------------|
| | 4.BMTKM50SKT250 | 70mm | 71 mm | 148.5mm | 95 mm | KM50 |
| | | | | | | |
| | | | | | | |



BMT65 Turret

Standard For Machines:

- + ST-20Y, ST-25Y
- + ST-30Y, ST-35Y
- + DS-30Y

BMT65 Turret **Optional**

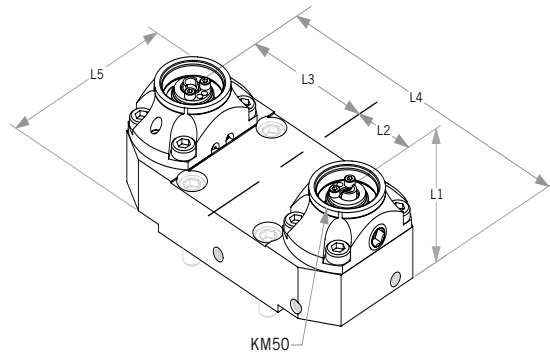
For Machines:

- + ST-20, ST-25
- + ST-30, ST-35

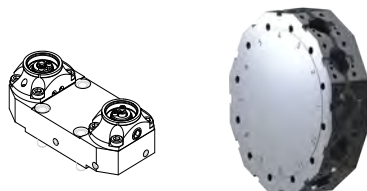
- + Coolant Option: Internal Coolant

KM50 Twin Turning Tool

- ▶ Bolt-On KM50 Twin Turning Tool Holder for BMT65 12 Station Turret. See tool/turret diagram below for compatible machines. Contact support@commandtool.com for more information.



| KM50 Twin Turning Tool | Part No. | L1 | L2 | L3 | L4 | L5 | Modular Type |
|------------------------|------------------|-------|-------|-------|--------|-------|--------------|
| | 15.BMTKM50SKT250 | 70 mm | 71 mm | 71 mm | 197 mm | 95 mm | KM50 |
| | | | | | | | |
| | | | | | | | |



BMT65 Turret

Standard For Machines:

- + ST-20Y, ST-25Y
- + ST-30Y, ST-35Y
- + DS-30Y

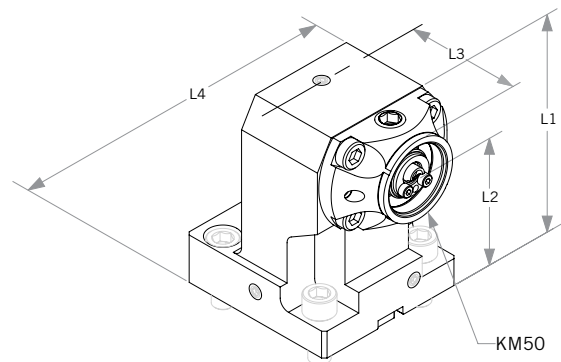
BMT65 Turret **Optional**
For Machines:

- + ST-20, ST-25
- + ST-30, ST-35

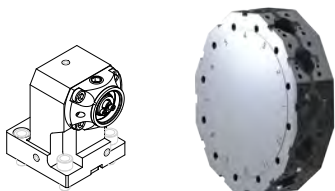
- + Coolant Option: Internal Coolant

KM50 Boring Bar Holder

- ▶ Bolt-On KM50 Boring Bar Holder for BMT65 12 Station Turret. See tool/turret diagram below for compatible machines. Contact support@commandtool.com for more information.



| KM50 Boring Bar Holder | Part No. | L1 | L2 | L3 | L4 | Modular Type |
|------------------------|----------------------|-------|-------|------|------|--------------|
| | 19.BMTKM50SKT250X100 | 128mm | 100mm | 70mm | 96mm | KM50 |
| | | | | | | |
| | | | | | | |



BMT65 Turret

Standard For Machines:

- + ST-20Y, ST-25Y
- + ST-30Y, ST-35Y
- + DS-30Y

BMT65 Turret **Optional**

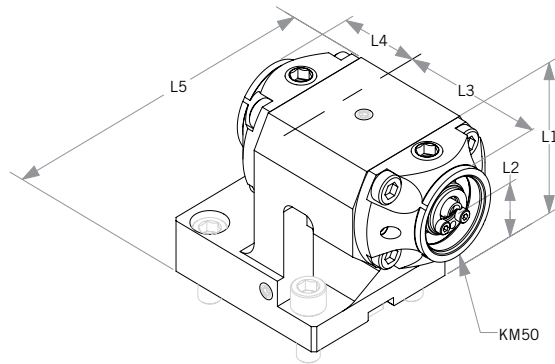
For Machines:

- + ST-20, ST-25
- + ST-30, ST-35

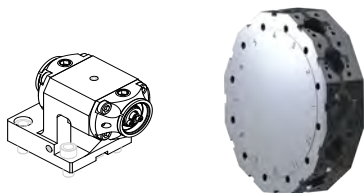
- + Coolant Option: Internal Coolant

KM50 Twin Boring Bar Holder

- ▶ Bolt-On KM50 Twin Boring Bar Holder for BMT65 12 Station Turret. See tool/turret diagram below for compatible machines. Contact support@commandtool.com for more information.



| KM50 Twin Boring Bar Holder | Part No. | L1 | L2 | L3 | L4 | L5 | Modular Type |
|-----------------------------|---------------------|---------|------|-------|------|------|--------------|
| | 17.BMTKM50SKT250X85 | 112.5mm | 85mm | 103mm | 27mm | 95mm | KM50 |
| | | | | | | | |
| | | | | | | | |



BMT65 Turret

Standard For Machines:

- + ST-20Y, ST-25Y
- + ST-30Y, ST-35Y
- + DS-30Y

BMT65 Turret Optional

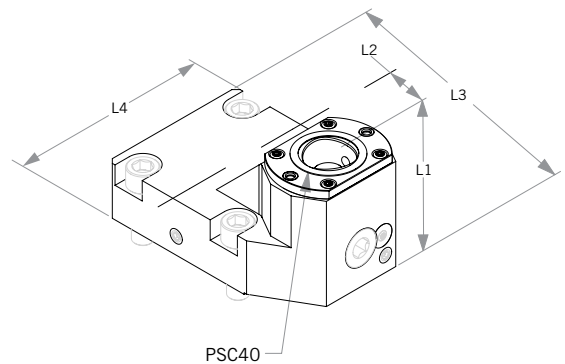
For Machines:

- + ST-20, ST-25
- + ST-30, ST-35

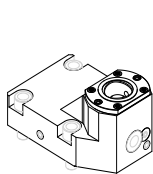
- + Coolant Option: Internal Coolant

PSC 40 Turning Tool

- ▶ Bolt-On PSC 40 Turning Tool Holder for BMT65 12 Station Turret. See tool/turret diagram below for compatible machines. Contact support@commandtool.com for more information.



| PSC 40 Turning Tool | Part No. | L1 | L2 | L3 | L4 | Modular Type |
|---------------------|---------------|-------|-------|--------|-------|--------------|
| | 4.BMTC4SKT250 | 74 mm | 65 mm | 139 mm | 94 mm | PSC 40 |
| | | | | | | |
| | | | | | | |



BMT65 Turret

Standard For Machines:

- + ST-20Y, ST-25Y
- + ST-30Y, ST-35Y
- + DS-30Y

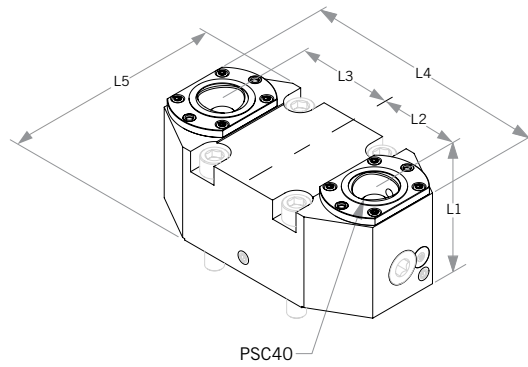
BMT65 Turret **Optional**
For Machines:

- + ST-20, ST-25
- + ST-30, ST-35

- + Coolant Option: Internal Coolant

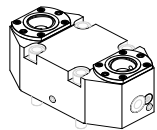
PSC 40 Twin Turning Tool

- ▶ Bolt-On PSC 40 Twin Turning Tool Holder for BMT65 12 Station Turret. See tool/turret diagram below for compatible machines. Contact support@commandtool.com for more information.



PSC40

| PSC 40 Twin Turning Tool | Part No. | L1 | L2 | L3 | L4 | L5 | Modular Type |
|--------------------------|----------------|------|------|------|-------|------|--------------|
| | 15.BMTC4SKT250 | 74mm | 65mm | 65mm | 178mm | 95mm | PSC 40 |
| | | | | | | | |
| | | | | | | | |



BMT65 Turret
Standard For Machines:

- + ST-20Y, ST-25Y
- + ST-30Y, ST-35Y
- + DS-30Y

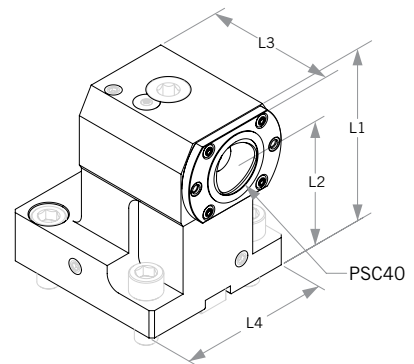
BMT65 Turret **Optional**
For Machines:

- + ST-20, ST-25
- + ST-30, ST-35

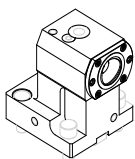
- + Coolant Option: Internal Coolant

PSC 40 Boring Bar Holder

- ▶ Bolt-On PSC 40 Boring Bar Holder for BMT65 12 Station Turret. See tool/turret diagram below for compatible machines. Contact support@commandtool.com for more information.



| PSC 40 Boring Bar Holder | Part No. | L1 | L2 | L3 | L4 | Modular Type |
|--------------------------|----------------|-------|------|-------|------|--------------|
| | 19.BMTC4SKT250 | 114mm | 90mm | 113mm | 95mm | PSC 40 |
| | | | | | | |
| | | | | | | |



BMT65 Turret

Standard For Machines:

- + ST-20Y, ST-25Y
- + ST-30Y, ST-35Y
- + DS-30Y

BMT65 Turret **Optional**

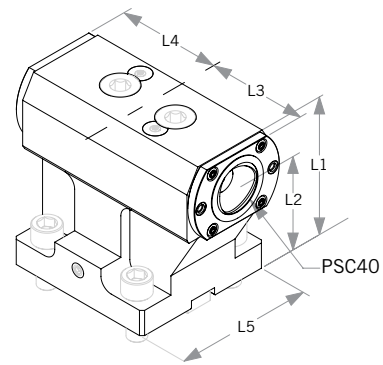
For Machines:

- + ST-20, ST-25
- + ST-30, ST-35

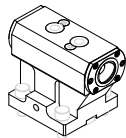
- + Coolant Option: Internal Coolant

PSC 40 Twin Boring Bar Holder

- ▶ Bolt-On PSC 40 Twin Boring Bar Holder for **BMT65** 12 Station Turret. See tool/turret diagram below for compatible machines. Contact support@commandtool.com for more information.



| PSC 40 Twin Boring Bar Holder | Part No. | L1 | L2 | L3 | L4 | L5 | Modular Type |
|-------------------------------|-----------------|-------|------|------|------|------|--------------|
| | 17.BMTC4DSKT250 | 114mm | 90mm | 77mm | 63mm | 95mm | PSC 40 |
| | | | | | | | |
| | | | | | | | |



BMT65 Turret

Standard For Machines:

- + ST-20Y, ST-25Y
- + ST-30Y, ST-35Y
- + DS-30Y

BMT65 Turret **Optional**
For Machines:

- + ST-20, ST-25
- + ST-30, ST-35

- + Coolant Option: Internal Coolant

Angle Heads

 **Made in the USA for your Haas Mill**



- ▶ Angle Heads have been developed for milling complex part geometries, complex milling inside parts and simple boring in a missing machine axis. Angle Heads must be used with a stop block and are designed to work with automatic tool changers.

Angle Head Features

- + Solution for lack of machining axis
- + Machine hard to reach parts
- + Center Boring
- + Steeplless angle adjustment around the horizontal axis with tangentially acting double cone clamp MR> 250 Nm

Variations

Basic



Duplex



Offset



Contact support@commandtool.com for more information

Additional Tooling for BMT65

▶ Gear Hobbers

Gear hobbing on CNC lathes without B-axis



▶ Swivel Heads

Compact and stable – Command's new swivel head



▶ KM™ Quick Change

As announced at IMTS 2016, EWS Group/Command Tooling Systems forged a strategic partnership with Kennametal to provide a wide assortment of live and static turret blocks equipped with KM® quick-change connections, ER-style rotary tool adapters, KM4X63™ and more



▶ Varia VX Quick Change

The new quick-change system for heavy cutting



Contact support@commandtool.com for more information



Command Tooling Systems

13931 Sunfish Lake Blvd.
Ramsey, MN 55303 USA

PH: 800.328.2197 • 763.576.6910

FX: 800.555.7694 • 763.576.6911

email: SUPPORT@COMMANDTOOL.COM

web: WWW.COMMANDTOOL.COM

10/17/2019