



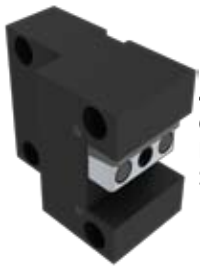
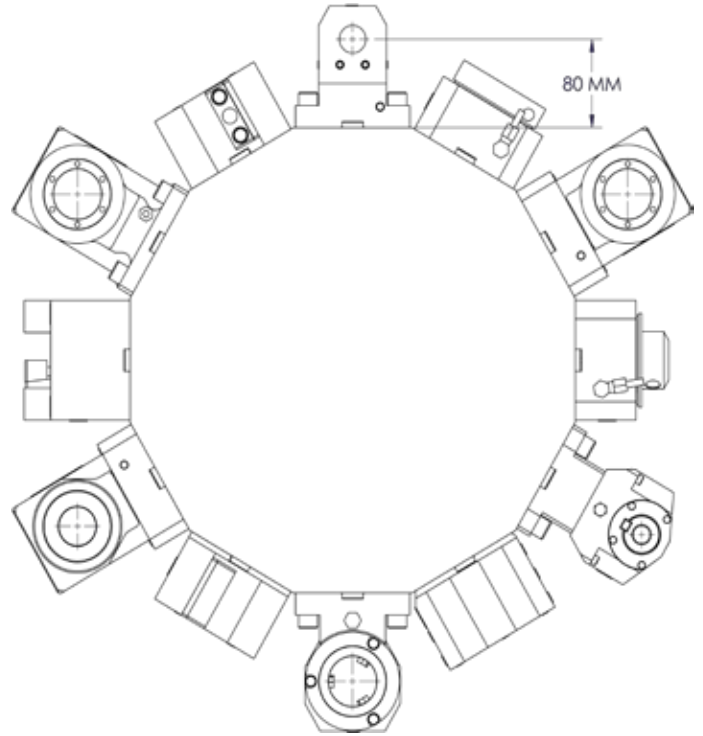
Mori Seiki

Static and Driven Tools

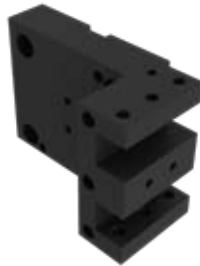
NL and NT Series



Static Tools



4.BMT25NLX70
O.D. Turning Tool
Holder for 25mm
Square Shank



4.BMT25DYNLX80
Dual Y-Axis O.D. Turning
Tool Holder for 25mm
Square Shank



8.BMT25NL
Facing Turning Tool
Holder for 25mm
Square Shank



15.BMT25NL
Dual O.D. Turning
Tool Holder for 25mm
Square Shank



15.BMT25QYNL
Quad Y-Axis O.D.
Turning Tool Holder
for 25mm Square
Shank

All Static Tools Are Also Available
In Inch Sizes.



Static Tools



17.BMT40DNL
Combi Dual Tool Holder With Int/Ext. Coolant
Additional Sizes Available
NT Series part number: 17.BMT40DNT42X120



17.BMT40NL
Combi Tool Holder With Int/Ext. Coolant
Additional Sizes Available
NT Series part number: 17.BMT40NT42X120



19.BMTD25NL X80X125
Dual Axis Combi Tool Holder With Int/Ext. Coolant



32.BMT32NLL
Cut-Off Tool Holder for 32mm Blade



4.BMTC4NL ■
CaptoC4 Multi-Purpose Tool Holder
Also available in CaptoC5



15.BMTC4NL ■
CaptoC4 Dual Multi-Purpose Tool Holder
Also available in CaptoC5



WABMT40NLZ35
VDI40 Tool Holder Adapter
Also available for VDI30



17.BMTC4DNLX90 ■
Dual CaptoC4 Combi Tool Holder
Also available in CaptoC5



19.BMTC4NLX90 ■
CaptoC4 Combi Tool Holder



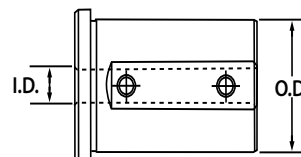
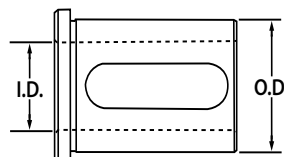
19.BMTV5NL ■
VariaV5 Combi Tool Holder With Int/Ext. Coolant

Special Tools Are Available by Request.
Contact Command Customer Service for Details.

See page 4 for available VariaV5 accessories

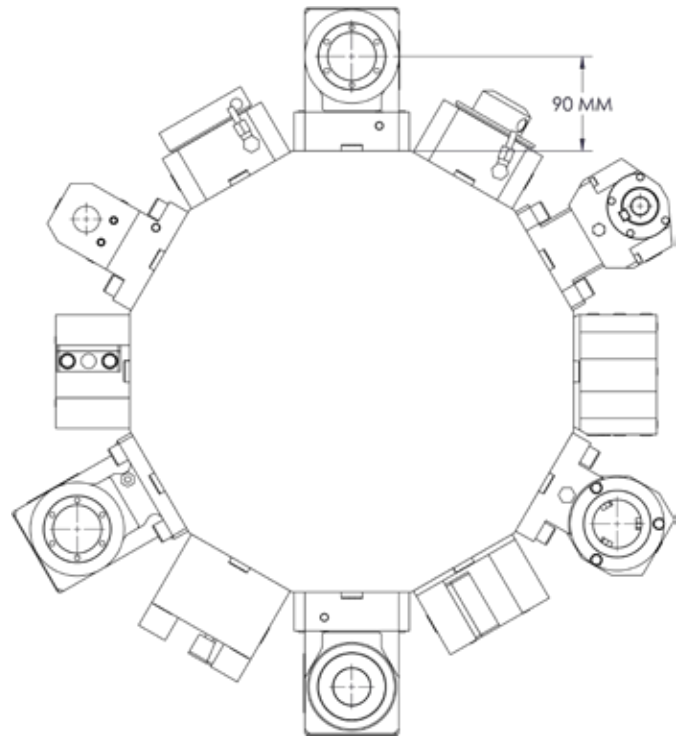
Accessories

Reduction Sleeve Size Ranges	
O.D. (mm)	O.D. (inches)
20 - 50	3/4" - 2"
Inch and Metric I.D. Available	





Driven Tools



40.6040NL
Axial Drilling and
Milling Head ER40
*Also available with
internal coolant and
as ER32*



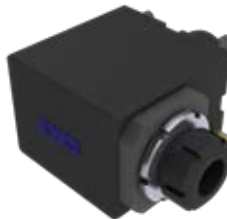
50.6025NLIK1
Offset Axial Drilling and
Milling Head ER25
*1 : 2 ratio, also available
with internal coolant*



40.6025WNNL
Weldon/Whistle
Notch Axial Drilling
and Milling Head Ø
25mm
*Also available with
internal coolant and in
additional sizes*



60.6040NL
Radial Drilling and
Milling Head ER40
*Also available with
internal coolant and as
ER32*



60.6032NL11
Radial Drilling and
Milling Head ER32
*1 : 2 ratio, Also
available with internal
coolant*



60.6040DNL
Dual Radial Drilling and
Milling Head ER40
*Also available with
internal coolant and as
ER32*



Driven Tools



40.60V5NL ■
VariaV5 Modular Axial
Drilling and Milling
Head
*Also available with
internal coolant*



60.60V5NL ■
VariaV5 Modular
Radial Drilling and
Milling Head
*Also available with
internal coolant*



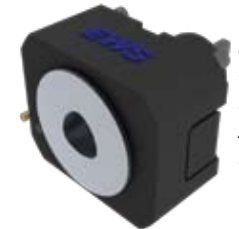
60.60V5DNL ■
VariaV5 Modular Dual
Radial Drilling and
Milling Head
*Also available with
internal coolant*



64.6022NLI3TKW
Saw Milling/Gear
Hobbing Head
*3 : 1 ratio, cutter ø up to
100mm for module 2.5*



63.6016NLI1
Adjustable Angle
Head
*1 : 2 ratio, also
available as ER32*



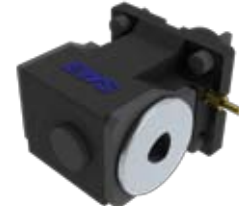
40.60C4NL ■
CaptoC4 Axial Drilling
and Milling Head
*Also available with
internal coolant and in
CaptoC5*



69.6016WNNLX105
Push Slotter
*The most cost effective
tool you can put on your
lathe. Call your local sales
rep. for details*

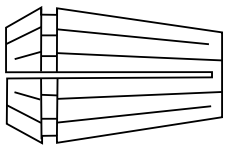


63.6032NL
Adjustable Angle
Head
*Also available with
internal coolant, as
ER20 and ER25*



60.60C4NL ■
CaptoC4 Radial Drilling
and Milling Head
*Also available with
internal coolant and in
CaptoC5*

Accessories



Collet Size Ranges
ER16 - ER40
Inch and Metric
Available

■ **EWS** VariaV5 Tools

*The award winning design for modular systems known
for ease of use and rigidity.*

■ **EWS** CAPTO™ Tools

EWS is a licensed partner of Coromant Capto



NEWS-Varia V5

Modular systems

**New, EWS Varia V5
160Nm Max Torque Range**

- Quick change through only one clamping point
- Clamping of the inserts without any radial force
- No risk of injury when changing tools

The VariaV5 System is the revolutionary “quick change” design from EWS that carries on our tradition of *Engineering Excellence*. You’ll know the first time that you set up a job with the VariaV5 that you’ve made the *Right* decision. Our system is in a class of its own for accuracy, ease of use, set up time reduction and repeatability. Call your local Command/EWS Group Distributor today to begin saving now with the EWS VariaV5 System.

VariaV5 Inserts



27.V516WNL36
Weldon/Whistle
Notch Adaptors
6mm - 32mm Ø
Inch Also Available

31.V540L38
ER Collet Chuck
Adaptors
Available As
ER40, ER32, ER25

27.V532WNL56
Weldon/Whistle
Notch Adaptors
6mm - 32mm Ø
Inch Also Available

42.V522L08
Shell Mill Adaptors
16mm - 32mm Ø
Inch Also Available

27.V516WNL06
Stub Length Weldon/
Whistle Notch Adaptors
6mm - 32mm Ø
Inch Also Available

25.V50L57
Morse Taper
Adaptors
MT1 - MT3



Product Offered Through Command

CIRCOTEC RX High Performance Reamers

By **URMA**



CircoTec RX Reamers are available in a diameter range from 0.468 to 4" (12-101.6mm); the ONLY solid carbide/cermet system available for reaming diameters up to 4" (101.6mm)

Features & Benefits of the CircoTec RX Reamers:

- Multiple cutting edges for faster speeds & feed rates
- Repeatability < 4 microns
- Rugged tool design increases tool life



MicroMax
0.040 to 1.575"
(1 to 40mm)



VersaMax
Roughing:
0.768 to 6.024"
(19.5 to 153mm)



VersaMax
Finishing:
0.787 to 6.024"
(20 to 153mm)



IntraMax
Boring:
1.9 to 14"
(48.3-355.6mm)
OD Turning:
0.35 to 9.8"
(9 to 248.9mm)



MegaMax
5.9 to 30.7"
(150 to 805mm)



See how easy it can be to maximize your tool's performance with the True Zero collet nut!

With the True Zero collet nut, you can reach true, concentric zero in less than 1 minute!

The True Zero Collet offers:

- Eliminates the need for floating toolholders when reaming
- Adjustments can be made on the spindle or the turret
- Spindle concentricity errors can be compensated
- 6 point fine tune adjustment
- Improves surface finishes
- Increased tool life



True Zero is offered in the following sizes:



- XGZN-0016
- XGZN-0020
- XGZN-0025
- XGZN-0032
- XZGN-0040



Command and EWS



EWS Weigele GmbH & Co. KG manufacturers both static and driven tools in its factory in Uhingen (Germany) located between Stuttgart and Ulm. For many years EWS has specifically focused on high precision manufacturing in their plant, in order to meet the highest standards of delivery, reliability and flexibility.

www.ews-tools.de



In 1999 EWS Korea was established. It consists of 52 staff members specializing in the areas of construction, production and sales who service the Asian market. Leading machine manufacturers rely on and make use of the competence and global network of the EWS Group for their own applications and service of their customers.

www.ewskorea.co.kr



In early 2008, Command Tooling Systems became the newest member of the EWS group. Command is a leading manufacturer of tools for CNC machining centers. This expansion of the EWS Group will better serve the growing markets for milling and turning machines.

www.commandtool.com



Your Business Card Here