



Command Tooling Systems

Thermolock[®]

Product Catalog



Table of Contents

ThermoLock® Product Information

| | |
|------------------------|-----|
| Shrink-Fit Information | 1-2 |
|------------------------|-----|

ThermoLock® Tool Holders

| | |
|---------|-------|
| CT40 | 3-5 |
| CT50 | 6-8 |
| BT40 | 9-11 |
| BT50 | 12-14 |
| HSK40A | 15-16 |
| HSK63A | 17-19 |
| HSK100A | 20-22 |
| HSK40E | 23-24 |
| HSK63F | 25-26 |

ThermoLock® HP Tool Holders

| | |
|---------|-------|
| CT40 | 27-30 |
| CT50 | 31-34 |
| BT30 | 35 |
| BT40 | 36-39 |
| BT50 | 40-43 |
| HSK40A | 44-45 |
| HSK50A | 46-48 |
| HSK63A | 49-52 |
| HSK100A | 53-56 |
| HSK25E | 57 |
| HSK32E | 58 |
| HSK40E | 59-60 |
| HSK50E | 61-63 |
| HSK63F | 64-65 |

ThermoLock® Extensions

| | |
|-------------|----|
| 4.5 DEGREES | 66 |
| 3.0 DEGREES | 67 |

THERMLOCK®

SHRINK-FIT TOOLHOLDERS

With Shrinker® Technology

- Maximum tool-gripping strength and machining accuracy
- 360° concentric clamping without set screws, collets, or nosepieces
- Engineered to produce the highest degree of balance available

Easy to use. Here is how it works –

- The Command ThermoLock® toolholder operates on the principle of thermal induced expansion and contraction
- ThermoLock® toolholders are heated to load and unload the cutting tool
- The holder nose I.D. is slightly undersized relative to the cutting tool to be used. The holder is placed in a heating unit where the holder nose I.D. size expands to accept the cutting tool. When cooled, the holder nose I.D. tries to shrink back to its original undersized dimension
- The result is incredible gripping power over the full length of the holder/cutting tool interface. To remove the tool, simply reverse the process
- For best results, use round shank (no flats) carbide tooling
- **Note: Return Policy**
A holder cannot be returned if its been modified or heated



Benefits:

- Improved toolholder rigidity
- Produces improved surface finish
- More accurate hole size and roundness
- Extended tool life – less scrap
- Minimized loss of accuracy across the holder/cutting tool interface
- Improved performance at both extremes of the machining continuum – High speeds and Tough cuts
- Once a holder is balanced, the only variable is the cutting tool
- AT3 or better Shank Taper – accurate, rigid toolholder-to-spindle mount
- Fully ground flange and V-groove – easy on tool changers for less spindle and changer maintenance
- All tapers and lengths ready to ship – get your tools fast

Features:

- Outstanding Balance Performance!
- ThermoLock® nose diameter design optimized for performance
- Excellent clamping and balance repeatability for higher speeds and superior cut duplication
- No moving parts, set screws, collets, or nosepieces
- Enclosed toolholder design resists dirt, chips, and coolant
- ThermoLock® toolholders come ready for through-the-spindle coolant. This sealed system yields optimal coolant-fed tooling performance
- Designed for single ended cutters only

Shrinker® is a registered trademark of Tooling Innovations, Dana Point, CA

Need to see results before investing in ThermoLock®?

- Tell us about your applications and we can help you choose the best toolholder
- See the results! Purchase a ThermoLock® holder, then send us a tool to be installed. We will set the tool in the holder for you to use
- See the performance of ThermoLock® toolholders(s) before you invest in tool change equipment

ThermoLock® Toolholders can provide significant benefit

Increased Tool Life

ThermoLock® typically generates dramatic improvements in tool life. For instance, an end mill may last two to seven times longer. Consider this example: Assume an end mill costs \$50; if a shop uses 100 end mills a month and could double end mill life, the savings in just one month would be 50 x \$50, for a total of \$2,500

Increased Spindle Up-Time

The machine is spending more time cutting when less time is spent on setup and tool changes. ThermoLock® is ideal for 24 hours x 7 day/week machining operations

Less Downtime for Setup

Evaluate how many minutes are spent per spindle on setup. Setup time is significantly reduced with increased tool life and quick tool changes

Faster Cycle Times & Improved Surface Finish

Fully utilize machine capabilities with maximum gripping power and the highest degree of toolholder balance possible

Reduced Scrap Rate

With superior toolholding accuracy and longer tool life

ThermoLock® Toolholder Notes

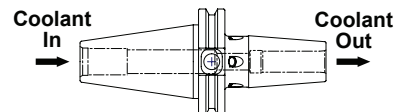
- Recommended for use with single end, round shank carbide tools (no flats), with h6 tolerance (see chart)
- Works best with carbide cutting tools. For high speed steel cutting tool applications, contact Customer Service
- ThermoLock® toolholders available only with shiny shank, no black oxide
- Once ThermoLock® toolholders are heated, modified with coolant options or balanced, they cannot be returned

| Shank Size Inch [MM] | Tolerance Inch [MM] |
|-------------------------|------------------------|
| .2362-.3937 [6-10] | -.00035 [-.009] |
| .3937-.7087 [10-18] | -.00043 [-.011] |
| .7087-1.1811 [18-30] | -.00051 [-.013] |
| 1.1811-1.9685 [30-50] | -.00063 [-.016] |

Coolant Options for ThermoLock® Toolholders

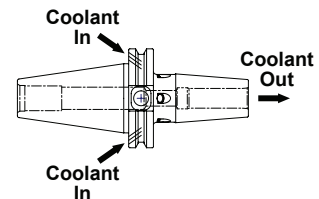
Through-Spindle Coolant

- Standard for all Command Toolholder bodies



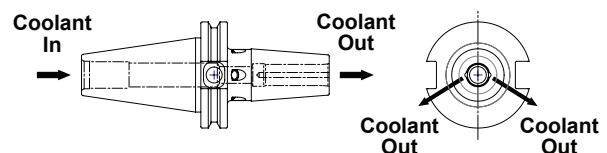
Through-Flange Coolant

- May also be referred to as DIN 69871 Form B Coolant
- Modification available for most Command Toolholders

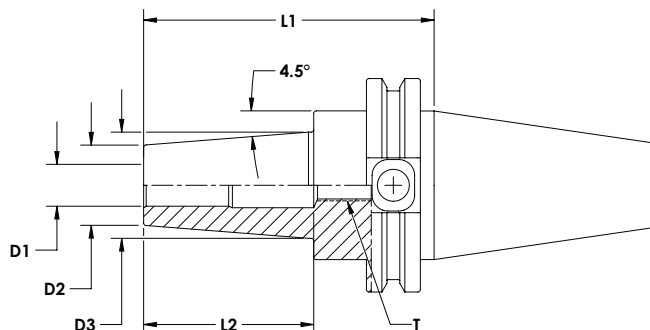


Surround Coolant

- Specify 2-Port or 4-Port
- Surround coolant is not available on extensions



- Max T.I.R. of .0002"
- Balanced at 25,000 RPM @ G2.5



Standard

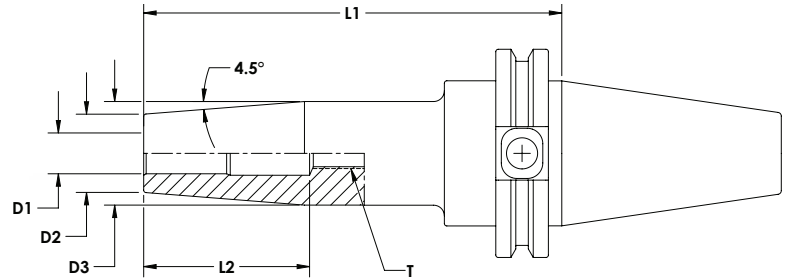
| Part Number | D1 | D2 | D3 | L1 | L2 | T |
|-------------|-------|------|------|------|-----|-------|
| C4Y3-0312 | 0.312 | 0.79 | 1.00 | 3.38 | 1.4 | M6X1 |
| C4Y3-0375 | 0.375 | 0.79 | 1.00 | 3.38 | 1.6 | M8X1 |
| C4Y3-0437 | 0.437 | 0.94 | 1.25 | 3.38 | 1.6 | M8X1 |
| C4Y3-0500 | 0.500 | 0.94 | 1.25 | 3.38 | 1.8 | M10X1 |
| C4Y3-0562 | 0.562 | 1.06 | 1.38 | 3.63 | 1.8 | M10X1 |
| C4Y3-0625 | 0.625 | 1.06 | 1.38 | 3.63 | 1.8 | M12X1 |
| C4Y3-0750 | 0.750 | 1.30 | 1.63 | 3.63 | 2.1 | M16X1 |
| C4Y3-1000 | 1.000 | 1.73 | 2.09 | 3.63 | 2.1 | M16X1 |
| C4Y3-1250 | 1.250 | 1.73 | 2.09 | 3.63 | 2.1 | M16X1 |

Metric

| Part Number | D1 | D2 | D3 | L1 | L2 | T |
|-------------|------|------|------|-------|-----|-------|
| C4Y3-8008 | 8MM | 21MM | 27MM | 80MM | 1.4 | M6X1 |
| C4Y3-8010 | 10MM | 24MM | 32MM | 80MM | 1.6 | M8X1 |
| C4Y3-8012 | 12MM | 24MM | 32MM | 80MM | 1.8 | M8X1 |
| C4Y3-8014 | 14MM | 24MM | 32MM | 80MM | 1.8 | M10X1 |
| C4Y3-8016 | 16MM | 27MM | 34MM | 80MM | 1.8 | M12X1 |
| C4Y3-8018 | 18MM | 33MM | 42MM | 80MM | 2.1 | M16X1 |
| C4Y3-8020 | 20MM | 33MM | 42MM | 80MM | 2.1 | M16X1 |
| C4Y3-8025 | 25MM | 44MM | 53MM | 100MM | 2.1 | M16X1 |
| C4Y3-8032 | 32MM | 44MM | 53MM | 100MM | 2.1 | M16X1 |

Standard Gage Length

- Max T.I.R. of .0002"
- Balanced at 25,000 RPM @ G2.5



Standard

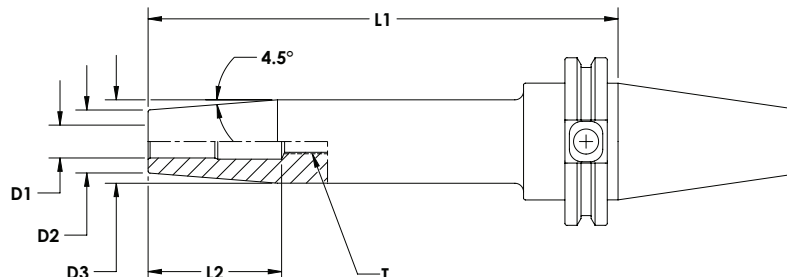
| Part Number | D1 | D2 | D3 | L1 | L2 | T |
|-------------|-------|------|------|------|-----|-------|
| C4Y4-0312 | 0.312 | 0.79 | 1.00 | 5.00 | 1.4 | M6X1 |
| C4Y4-0375 | 0.375 | 0.79 | 1.00 | 5.00 | 1.6 | M8X1 |
| C4Y4-0437 | 0.437 | 0.94 | 1.25 | 5.00 | 1.6 | M8X1 |
| C4Y4-0500 | 0.500 | 0.94 | 1.25 | 5.00 | 1.8 | M10X1 |
| C4Y4-0562 | 0.562 | 1.06 | 1.38 | 5.00 | 1.8 | M10X1 |
| C4Y4-0625 | 0.625 | 1.06 | 1.38 | 5.00 | 1.8 | M12X1 |
| C4Y4-0750 | 0.750 | 1.30 | 1.63 | 5.00 | 2.1 | M16X1 |
| C4Y4-1000 | 1.000 | 1.73 | 2.09 | 5.00 | 2.1 | M16X1 |
| C4Y4-1250 | 1.250 | 1.73 | 2.09 | 5.00 | 2.1 | M16X1 |

Metric

| Part Number | D1 | D2 | D3 | L1 | L2 | T |
|-------------|------|------|------|-------|-----|-------|
| C4Y4-8008 | 8MM | 21MM | 27MM | 130MM | 1.4 | M6X1 |
| C4Y4-8010 | 10MM | 24MM | 32MM | 130MM | 1.6 | M8X1 |
| C4Y4-8012 | 12MM | 24MM | 32MM | 130MM | 1.8 | M8X1 |
| C4Y4-8014 | 14MM | 24MM | 32MM | 130MM | 1.8 | M10X1 |
| C4Y4-8016 | 16MM | 27MM | 34MM | 130MM | 1.8 | M12X1 |
| C4Y4-8018 | 18MM | 33MM | 42MM | 130MM | 2.1 | M16X1 |
| C4Y4-8020 | 20MM | 33MM | 42MM | 130MM | 2.1 | M16X1 |
| C4Y4-8025 | 25MM | 44MM | 53MM | 130MM | 2.1 | M16X1 |
| C4Y4-8032 | 32MM | 44MM | 53MM | 130MM | 2.1 | M16X1 |



- Max T.I.R. of .0002"
- Balanced at 25,000 RPM @ G2.5



Standard

| Part Number | D1 | D2 | D3 | L1 | L2 | T |
|-------------|-------|------|------|------|-----|-------|
| C4Y5-0312 | 0.312 | 0.79 | 1.00 | 7.00 | 1.4 | M6X1 |
| C4Y5-0375 | 0.375 | 0.79 | 1.00 | 7.00 | 1.6 | M8X1 |
| C4Y5-0437 | 0.437 | 0.94 | 1.25 | 7.00 | 1.6 | M8X1 |
| C4Y5-0500 | 0.500 | 0.94 | 1.25 | 7.00 | 1.8 | M10X1 |
| C4Y5-0562 | 0.562 | 1.06 | 1.38 | 7.00 | 1.8 | M10X1 |
| C4Y5-0625 | 0.625 | 1.06 | 1.38 | 7.00 | 1.8 | M12X1 |
| C4Y5-0750 | 0.750 | 1.30 | 1.63 | 7.00 | 2.1 | M16X1 |
| C4Y5-1000 | 1.000 | 1.73 | 2.09 | 7.00 | 2.1 | M16X1 |
| C4Y5-1250 | 1.250 | 1.73 | 2.09 | 7.00 | 2.1 | M16X1 |

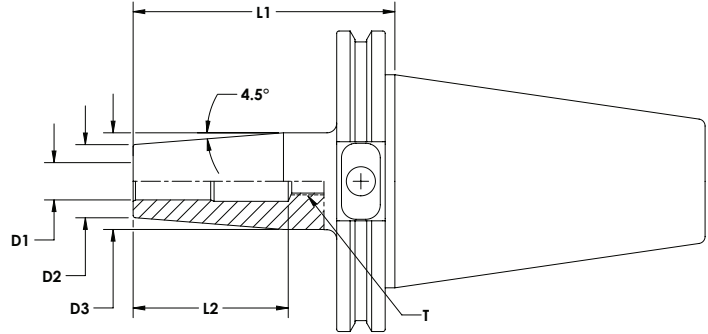
Metric

| Part Number | D1 | D2 | D3 | L1 | L2 | T |
|-------------|------|------|------|-------|-----|-------|
| C4Y5-8008 | 8MM | 21MM | 27MM | 160MM | 1.4 | M6X1 |
| C4Y5-8010 | 10MM | 24MM | 32MM | 160MM | 1.6 | M8X1 |
| C4Y5-8012 | 12MM | 24MM | 32MM | 160MM | 1.8 | M8X1 |
| C4Y5-8014 | 14MM | 24MM | 32MM | 160MM | 1.8 | M10X1 |
| C4Y5-8016 | 16MM | 27MM | 34MM | 160MM | 1.8 | M12X1 |
| C4Y5-8018 | 18MM | 33MM | 42MM | 160MM | 2.1 | M16X1 |
| C4Y5-8020 | 20MM | 33MM | 42MM | 160MM | 2.1 | M16X1 |
| C4Y5-8025 | 25MM | 44MM | 53MM | 160MM | 2.1 | M16X1 |
| C4Y5-8032 | 32MM | 44MM | 53MM | 160MM | 2.1 | M16X1 |

Stub Gage Length



- Max T.I.R. of .0002"
- Balanced at 25,000 RPM @ G2.5



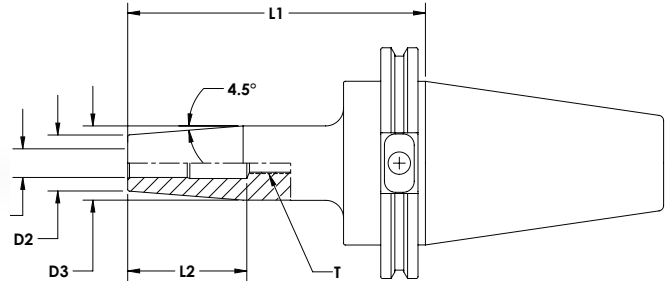
Standard

| Part Number | D1 | D2 | D3 | L1 | L2 | T |
|-------------|-------|------|------|------|-----|-------|
| C6Y3-0312 | 0.312 | 0.79 | 1.00 | 3.38 | 1.4 | M6X1 |
| C6Y3-0375 | 0.375 | 0.79 | 1.00 | 3.38 | 1.6 | M8X1 |
| C6Y3-0437 | 0.437 | 0.94 | 1.25 | 3.38 | 1.6 | M8X1 |
| C6Y3-0500 | 0.500 | 0.94 | 1.25 | 3.38 | 1.8 | M10X1 |
| C6Y3-0562 | 0.562 | 1.06 | 1.38 | 3.63 | 1.8 | M10X1 |
| C6Y3-0625 | 0.625 | 1.06 | 1.38 | 3.63 | 1.8 | M12X1 |
| C6Y3-0750 | 0.750 | 1.30 | 1.63 | 3.63 | 2.1 | M16X1 |
| C6Y3-1000 | 1.000 | 1.73 | 2.09 | 3.63 | 2.1 | M16X1 |
| C6Y3-1250 | 1.250 | 1.73 | 2.09 | 3.63 | 2.1 | M16X1 |

Metric

| Part Number | D1 | D2 | D3 | L1 | L2 | T |
|-------------|------|------|------|-------|-----|-------|
| C6Y3-8008 | 8MM | 21MM | 27MM | 80MM | 1.4 | M6X1 |
| C6Y3-8010 | 10MM | 24MM | 32MM | 80MM | 1.6 | M8X1 |
| C6Y3-8012 | 12MM | 24MM | 32MM | 80MM | 1.8 | M8X1 |
| C6Y3-8014 | 14MM | 24MM | 32MM | 80MM | 1.8 | M10X1 |
| C6Y3-8016 | 16MM | 27MM | 34MM | 80MM | 1.8 | M12X1 |
| C6Y3-8018 | 18MM | 33MM | 42MM | 80MM | 2.1 | M16X1 |
| C6Y3-8020 | 20MM | 33MM | 42MM | 80MM | 2.1 | M16X1 |
| C6Y3-8025 | 25MM | 44MM | 53MM | 100MM | 2.1 | M16X1 |
| C6Y3-8032 | 32MM | 44MM | 53MM | 100MM | 2.1 | M16X1 |

- Max T.I.R. of .0002"
- Balanced at 25,000 RPM @ G2.5



Standard

| Part Number | D1 | D2 | D3 | L1 | L2 | T |
|-------------|-------|------|------|------|-----|-------|
| C6Y4-0312 | 0.312 | 0.79 | 1.00 | 5.00 | 1.4 | M6X1 |
| C6Y4-0375 | 0.375 | 0.79 | 1.00 | 5.00 | 1.6 | M8X1 |
| C6Y4-0437 | 0.437 | 0.94 | 1.25 | 5.00 | 1.6 | M8X1 |
| C6Y4-0500 | 0.500 | 0.94 | 1.25 | 5.00 | 1.8 | M10X1 |
| C6Y4-0562 | 0.562 | 1.06 | 1.38 | 5.00 | 1.8 | M10X1 |
| C6Y4-0625 | 0.625 | 1.06 | 1.38 | 5.00 | 1.8 | M12X1 |
| C6Y4-0750 | 0.750 | 1.30 | 1.63 | 5.00 | 2.1 | M16X1 |
| C6Y4-1000 | 1.000 | 1.73 | 2.09 | 5.00 | 2.1 | M16X1 |
| C6Y4-1250 | 1.250 | 1.73 | 2.09 | 5.00 | 2.1 | M16X1 |

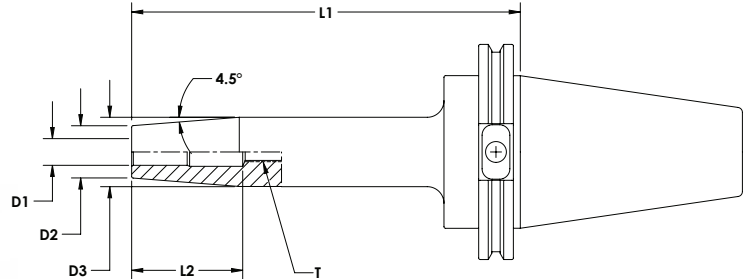
Metric

| Part Number | D1 | D2 | D3 | L1 | L2 | T |
|-------------|------|------|------|-------|-----|-------|
| C6Y4-8008 | 8MM | 21MM | 27MM | 130MM | 1.4 | M6X1 |
| C6Y4-8010 | 10MM | 24MM | 32MM | 130MM | 1.6 | M8X1 |
| C6Y4-8012 | 12MM | 24MM | 32MM | 130MM | 1.8 | M8X1 |
| C6Y4-8014 | 14MM | 24MM | 32MM | 130MM | 1.8 | M10X1 |
| C6Y4-8016 | 16MM | 27MM | 34MM | 130MM | 1.8 | M12X1 |
| C6Y4-8018 | 18MM | 33MM | 42MM | 130MM | 2.1 | M16X1 |
| C6Y4-8020 | 20MM | 33MM | 42MM | 130MM | 2.1 | M16X1 |
| C6Y4-8025 | 25MM | 44MM | 53MM | 130MM | 2.1 | M16X1 |
| C6Y4-8032 | 32MM | 44MM | 53MM | 130MM | 2.1 | M16X1 |

Extended Gage Length



- Max T.I.R. of .0002"
- Balanced at 25,000 RPM @ G2.5



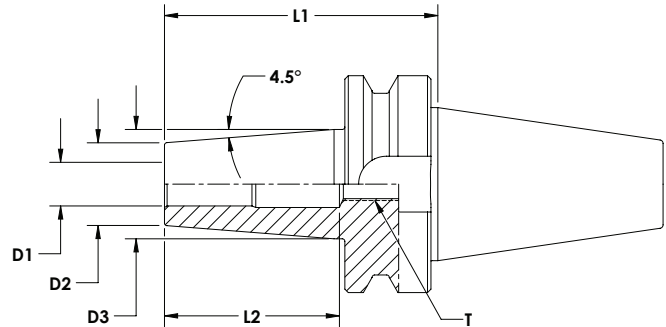
Standard

| Part Number | D1 | D2 | D3 | L1 | L2 | T |
|-------------|-------|------|------|------|-----|-------|
| C6Y5-0312 | 0.312 | 0.79 | 1.00 | 7.00 | 1.4 | M6X1 |
| C6Y5-0375 | 0.375 | 0.79 | 1.00 | 7.00 | 1.6 | M8X1 |
| C6Y5-0437 | 0.437 | 0.94 | 1.25 | 7.00 | 1.6 | M8X1 |
| C6Y5-0500 | 0.500 | 0.94 | 1.25 | 7.00 | 1.8 | M10X1 |
| C6Y5-0562 | 0.562 | 1.06 | 1.38 | 7.00 | 1.8 | M10X1 |
| C6Y5-0625 | 0.625 | 1.06 | 1.38 | 7.00 | 1.8 | M12X1 |
| C6Y5-0750 | 0.750 | 1.30 | 1.63 | 7.00 | 2.1 | M16X1 |
| C6Y5-1000 | 1.000 | 1.73 | 2.09 | 7.00 | 2.1 | M16X1 |
| C6Y5-1250 | 1.250 | 1.73 | 2.09 | 7.00 | 2.1 | M16X1 |

Metric

| Part Number | D1 | D2 | D3 | L1 | L2 | T |
|-------------|------|------|------|-------|-----|-------|
| C6Y5-8008 | 8MM | 21MM | 27MM | 160MM | 1.4 | M6X1 |
| C6Y5-8010 | 10MM | 24MM | 32MM | 160MM | 1.6 | M8X1 |
| C6Y5-8012 | 12MM | 24MM | 32MM | 160MM | 1.8 | M8X1 |
| C6Y5-8014 | 14MM | 24MM | 32MM | 160MM | 1.8 | M10X1 |
| C6Y5-8016 | 16MM | 27MM | 34MM | 160MM | 1.8 | M12X1 |
| C6Y5-8018 | 18MM | 33MM | 42MM | 160MM | 2.1 | M16X1 |
| C6Y5-8020 | 20MM | 33MM | 42MM | 160MM | 2.1 | M16X1 |
| C6Y5-8025 | 25MM | 44MM | 53MM | 160MM | 2.1 | M16X1 |
| C6Y5-8032 | 32MM | 44MM | 53MM | 160MM | 2.1 | M16X1 |

- Max T.I.R. of .0002"
- Balanced at 25,000 RPM @ G2.5



Standard

| Part Number | D1 | D2 | D3 | L1 | L2 | T |
|-------------|-------|------|------|------|-----|-------|
| B4Y3-0250 | 0.250 | 0.79 | 1.00 | 3.13 | 1.4 | M5X1 |
| B4Y3-0312 | 0.312 | 0.79 | 1.00 | 3.13 | 1.4 | M6X1 |
| B4Y3-0375 | 0.375 | 0.79 | 1.00 | 3.13 | 1.6 | M8X1 |
| B4Y3-0437 | 0.437 | 0.94 | 1.25 | 3.13 | 1.6 | M8X1 |
| B4Y3-0500 | 0.500 | 0.94 | 1.25 | 3.13 | 1.8 | M10X1 |
| B4Y3-0562 | 0.562 | 1.06 | 1.38 | 3.38 | 1.8 | M10X1 |
| B4Y3-0625 | 0.625 | 1.06 | 1.38 | 3.38 | 1.8 | M12X1 |
| B4Y3-0750 | 0.750 | 1.30 | 1.63 | 3.38 | 2.1 | M16X1 |
| B4Y3-1000 | 1.000 | 1.73 | 2.09 | 3.38 | 2.1 | M16X1 |
| B4Y3-1250 | 1.250 | 1.73 | 2.09 | 3.38 | 2.1 | M16X1 |

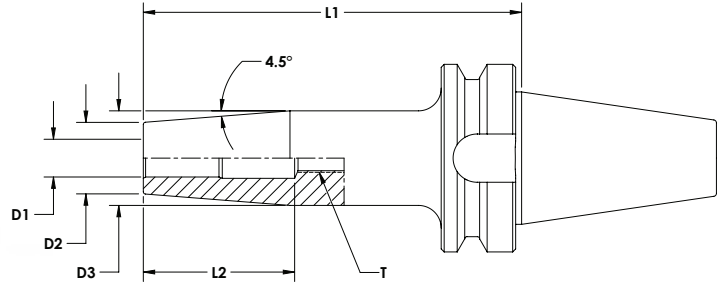
Metric

| Part Number | D1 | D2 | D3 | L1 | L2 | T |
|-------------|------|------|------|-------|-----|-------|
| B4Y3-8008 | 8MM | 21MM | 27MM | 90MM | 1.4 | M6X1 |
| B4Y3-8010 | 10MM | 24MM | 32MM | 90MM | 1.6 | M8X1 |
| B4Y3-8012 | 12MM | 24MM | 32MM | 90MM | 1.8 | M8X1 |
| B4Y3-8014 | 14MM | 24MM | 32MM | 90MM | 1.8 | M10X1 |
| B4Y3-8016 | 16MM | 27MM | 34MM | 90MM | 1.8 | M12X1 |
| B4Y3-8018 | 18MM | 33MM | 42MM | 90MM | 2.1 | M16X1 |
| B4Y3-8020 | 20MM | 33MM | 42MM | 90MM | 2.1 | M16X1 |
| B4Y3-8025 | 25MM | 44MM | 53MM | 100MM | 2.1 | M16X1 |
| B4Y3-8032 | 32MM | 44MM | 53MM | 100MM | 2.1 | M16X1 |

Standard Gage Length



- Max T.I.R. of .0002"
- Balanced at 25,000 RPM @ G2.5



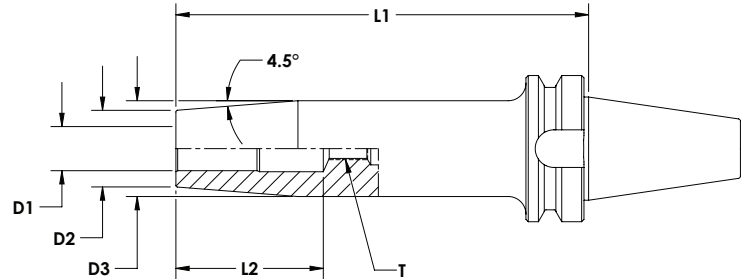
Standard

| Part Number | D1 | D2 | D3 | L1 | L2 | T |
|-------------|-------|------|------|------|-----|-------|
| B4Y4-0250 | 0.250 | 0.79 | 1.00 | 5.00 | 1.4 | M5X1 |
| B4Y4-0312 | 0.312 | 0.79 | 1.00 | 5.00 | 1.4 | M6X1 |
| B4Y4-0375 | 0.375 | 0.79 | 1.00 | 5.00 | 1.6 | M8X1 |
| B4Y4-0437 | 0.437 | 0.94 | 1.25 | 5.00 | 1.6 | M8X1 |
| B4Y4-0500 | 0.500 | 0.94 | 1.25 | 5.00 | 1.8 | M10X1 |
| B4Y4-0625 | 0.562 | 1.06 | 1.38 | 5.00 | 1.8 | M10X1 |
| B4Y4-0750 | 0.625 | 1.06 | 1.38 | 5.00 | 1.8 | M12X1 |
| B4Y4-0875 | 0.750 | 1.30 | 1.63 | 5.00 | 2.1 | M16X1 |
| B4Y4-1000 | 1.000 | 1.73 | 2.09 | 5.00 | 2.1 | M16X1 |
| B4Y4-1250 | 1.250 | 1.73 | 2.09 | 5.00 | 2.1 | M16X1 |

Metric

| Part Number | D1 | D2 | D3 | L1 | L2 | T |
|-------------|------|------|------|-------|-----|-------|
| B4Y4-8008 | 8MM | 21MM | 27MM | 130MM | 1.4 | M6X1 |
| B4Y4-8010 | 10MM | 24MM | 32MM | 130MM | 1.6 | M8X1 |
| B4Y4-8012 | 12MM | 24MM | 32MM | 130MM | 1.8 | M8X1 |
| B4Y4-8014 | 14MM | 24MM | 32MM | 130MM | 1.8 | M10X1 |
| B4Y4-8016 | 16MM | 27MM | 34MM | 130MM | 1.8 | M12X1 |
| B4Y4-8018 | 18MM | 33MM | 42MM | 130MM | 2.1 | M16X1 |
| B4Y4-8020 | 20MM | 33MM | 42MM | 130MM | 2.1 | M16X1 |
| B4Y4-8025 | 25MM | 44MM | 53MM | 130MM | 2.1 | M16X1 |
| B4Y4-8032 | 32MM | 44MM | 53MM | 130MM | 2.1 | M16X1 |

- Max T.I.R. of .0002"
- Balanced at 25,000 RPM @ G2.5



Standard

| Part Number | D1 | D2 | D3 | L1 | L2 | T |
|-------------|-------|------|------|------|-----|-------|
| B4Y5-0250 | 0.250 | 0.79 | 1.00 | 7.00 | 1.4 | M5X1 |
| B4Y5-0312 | 0.312 | 0.79 | 1.00 | 7.00 | 1.4 | M6X1 |
| B4Y5-0375 | 0.375 | 0.79 | 1.00 | 7.00 | 1.6 | M8X1 |
| B4Y5-0437 | 0.437 | 0.94 | 1.25 | 7.00 | 1.6 | M8X1 |
| B4Y5-0500 | 0.500 | 0.94 | 1.25 | 7.00 | 1.8 | M10X1 |
| B4Y5-0562 | 0.562 | 1.06 | 1.38 | 7.00 | 1.8 | M10X1 |
| B4Y5-0625 | 0.625 | 1.06 | 1.38 | 7.00 | 1.8 | M12X1 |
| B4Y5-0750 | 0.750 | 1.30 | 1.63 | 7.00 | 2.1 | M16X1 |
| B4Y5-1000 | 1.000 | 1.73 | 2.09 | 7.00 | 2.1 | M16X1 |
| B4Y5-1250 | 1.250 | 1.73 | 2.09 | 7.00 | 2.1 | M16X1 |

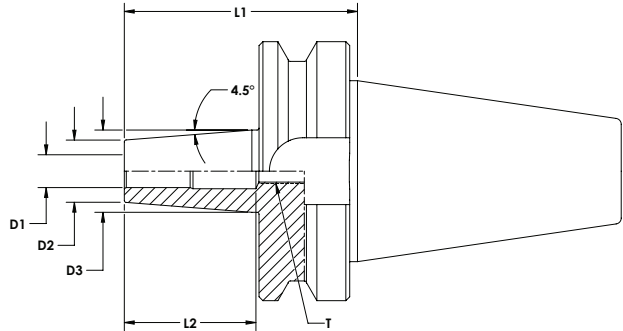
Metric

| Part Number | D1 | D2 | D3 | L1 | L2 | T |
|-------------|------|------|------|-------|-----|-------|
| B4Y5-8008 | 8MM | 21MM | 27MM | 160MM | 1.4 | M6X1 |
| B4Y5-8010 | 10MM | 24MM | 32MM | 160MM | 1.6 | M8X1 |
| B4Y5-8012 | 12MM | 24MM | 32MM | 160MM | 1.8 | M8X1 |
| B4Y5-8014 | 14MM | 24MM | 32MM | 160MM | 1.8 | M10X1 |
| B4Y5-8016 | 16MM | 27MM | 34MM | 160MM | 1.8 | M12X1 |
| B4Y5-8018 | 18MM | 33MM | 42MM | 160MM | 2.1 | M16X1 |
| B4Y5-8020 | 20MM | 33MM | 42MM | 160MM | 2.1 | M16X1 |
| B4Y5-8025 | 25MM | 44MM | 53MM | 160MM | 2.1 | M16X1 |
| B4Y5-8032 | 32MM | 44MM | 53MM | 160MM | 2.1 | M16X1 |

Stub Gage Length



- Max T.I.R. of .0002"
- Balanced at 25,000 RPM @ G2.5



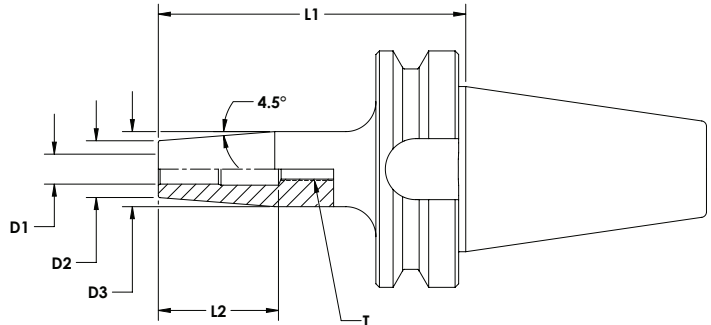
Standard

| Part Number | D1 | D2 | D3 | L1 | L2 | T |
|-------------|-------|------|------|------|-----|-------|
| B4Y3-0250 | 0.250 | 0.79 | 1.00 | 3.13 | 1.4 | M5X1 |
| B4Y3-0312 | 0.312 | 0.79 | 1.00 | 3.13 | 1.4 | M6X1 |
| B4Y3-0375 | 0.375 | 0.79 | 1.00 | 3.13 | 1.6 | M8X1 |
| B4Y3-0437 | 0.437 | 0.94 | 1.25 | 3.13 | 1.6 | M8X1 |
| B4Y3-0500 | 0.500 | 0.94 | 1.25 | 3.13 | 1.8 | M10X1 |
| B4Y3-0562 | 0.562 | 1.06 | 1.38 | 3.38 | 1.8 | M10X1 |
| B4Y3-0625 | 0.625 | 1.06 | 1.38 | 3.38 | 1.8 | M12X1 |
| B4Y3-0750 | 0.750 | 1.30 | 1.63 | 3.38 | 2.1 | M16X1 |
| B4Y3-1000 | 1.000 | 1.73 | 2.09 | 3.38 | 2.1 | M16X1 |
| B4Y3-1250 | 1.250 | 1.73 | 2.09 | 3.38 | 2.1 | M16X1 |

Metric

| Part Number | D1 | D2 | D3 | L1 | L2 | T |
|-------------|------|------|------|-------|-----|-------|
| B6Y3-8008 | 8MM | 21MM | 27MM | 90MM | 1.4 | M6X1 |
| B6Y3-8010 | 10MM | 24MM | 32MM | 90MM | 1.6 | M8X1 |
| B6Y3-8012 | 12MM | 24MM | 32MM | 90MM | 1.8 | M8X1 |
| B6Y3-8014 | 14MM | 24MM | 32MM | 90MM | 1.8 | M10X1 |
| B6Y3-8016 | 16MM | 27MM | 34MM | 90MM | 1.8 | M12X1 |
| B6Y3-8018 | 18MM | 33MM | 42MM | 90MM | 2.1 | M16X1 |
| B6Y3-8020 | 20MM | 33MM | 42MM | 90MM | 2.1 | M16X1 |
| B6Y3-8025 | 25MM | 44MM | 53MM | 100MM | 2.1 | M16X1 |
| B6Y3-8032 | 32MM | 44MM | 53MM | 100MM | 2.1 | M16X1 |

- Max T.I.R. of .0002"
- Balanced at 25,000 RPM @ G2.5



Standard

| Part Number | D1 | D2 | D3 | L1 | L2 | T |
|-------------|-------|------|------|------|-----|-------|
| B4Y4-0250 | 0.250 | 0.79 | 1.00 | 5.00 | 1.4 | M5X1 |
| B4Y4-0312 | 0.312 | 0.79 | 1.00 | 5.00 | 1.4 | M6X1 |
| B4Y4-0375 | 0.375 | 0.79 | 1.00 | 5.00 | 1.6 | M8X1 |
| B4Y4-0437 | 0.437 | 0.94 | 1.25 | 5.00 | 1.6 | M8X1 |
| B4Y4-0500 | 0.500 | 0.94 | 1.25 | 5.00 | 1.8 | M10X1 |
| B4Y4-0625 | 0.562 | 1.06 | 1.38 | 5.00 | 1.8 | M10X1 |
| B4Y4-0750 | 0.625 | 1.06 | 1.38 | 5.00 | 1.8 | M12X1 |
| B4Y4-0875 | 0.750 | 1.30 | 1.63 | 5.00 | 2.1 | M16X1 |
| B4Y4-1000 | 1.000 | 1.73 | 2.09 | 5.00 | 2.1 | M16X1 |
| B4Y4-1250 | 1.250 | 1.73 | 2.09 | 5.00 | 2.1 | M16X1 |

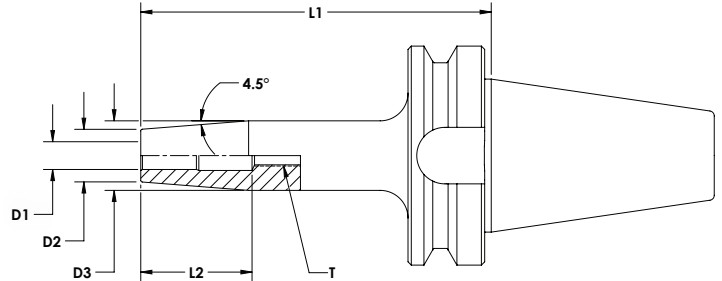
Metric

| Part Number | D1 | D2 | D3 | L1 | L2 | T |
|-------------|------|------|------|-------|-----|-------|
| B6Y4-8008 | 8MM | 21MM | 27MM | 130MM | 1.4 | M6X1 |
| B6Y4-8010 | 10MM | 24MM | 32MM | 130MM | 1.6 | M8X1 |
| B6Y4-8012 | 12MM | 24MM | 32MM | 130MM | 1.8 | M8X1 |
| B6Y4-8014 | 14MM | 24MM | 32MM | 130MM | 1.8 | M10X1 |
| B6Y4-8016 | 16MM | 27MM | 34MM | 130MM | 1.8 | M12X1 |
| B6Y4-8018 | 18MM | 33MM | 42MM | 130MM | 2.1 | M16X1 |
| B6Y4-8020 | 20MM | 33MM | 42MM | 130MM | 2.1 | M16X1 |
| B6Y4-8025 | 25MM | 44MM | 53MM | 130MM | 2.1 | M16X1 |
| B6Y4-8032 | 32MM | 44MM | 53MM | 130MM | 2.1 | M16X1 |

Extended Gage Length



- Max T.I.R. of .0002"
- Balanced at 25,000 RPM @ G2.5



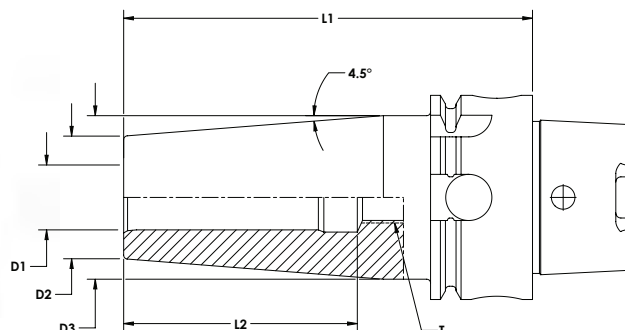
Standard

| Part Number | D1 | D2 | D3 | L1 | L2 | T |
|-------------|-------|------|------|------|-----|-------|
| B4Y5-0250 | 0.250 | 0.79 | 1.00 | 7.00 | 1.4 | M5X1 |
| B4Y5-0312 | 0.312 | 0.79 | 1.00 | 7.00 | 1.4 | M6X1 |
| B4Y5-0375 | 0.375 | 0.79 | 1.00 | 7.00 | 1.6 | M8X1 |
| B4Y5-0437 | 0.437 | 0.94 | 1.25 | 7.00 | 1.6 | M8X1 |
| B4Y5-0500 | 0.500 | 0.94 | 1.25 | 7.00 | 1.8 | M10X1 |
| B4Y5-0562 | 0.562 | 1.06 | 1.38 | 7.00 | 1.8 | M10X1 |
| B4Y5-0625 | 0.625 | 1.06 | 1.38 | 7.00 | 1.8 | M12X1 |
| B4Y5-0750 | 0.750 | 1.30 | 1.63 | 7.00 | 2.1 | M16X1 |
| B4Y5-1000 | 1.000 | 1.73 | 2.09 | 7.00 | 2.1 | M16X1 |
| B4Y5-1250 | 1.250 | 1.73 | 2.09 | 7.00 | 2.1 | M16X1 |

Metric

| Part Number | D1 | D2 | D3 | L1 | L2 | T |
|-------------|------|------|------|-------|-----|-------|
| B6Y5-8008 | 8MM | 21MM | 27MM | 160MM | 1.4 | M6X1 |
| B6Y5-8010 | 10MM | 24MM | 32MM | 160MM | 1.6 | M8X1 |
| B6Y5-8012 | 12MM | 24MM | 32MM | 160MM | 1.8 | M8X1 |
| B6Y5-8014 | 14MM | 24MM | 32MM | 160MM | 1.8 | M10X1 |
| B6Y5-8016 | 16MM | 27MM | 34MM | 160MM | 1.8 | M12X1 |
| B6Y5-8018 | 18MM | 33MM | 42MM | 160MM | 2.1 | M16X1 |
| B6Y5-8020 | 20MM | 33MM | 42MM | 160MM | 2.1 | M16X1 |
| B6Y5-8025 | 25MM | 44MM | 53MM | 160MM | 2.1 | M16X1 |
| B6Y5-8032 | 32MM | 44MM | 53MM | 160MM | 2.1 | M16X1 |

- Max T.I.R. of .0002"
- Balanced at 25,000 RPM @ G2.5



Standard

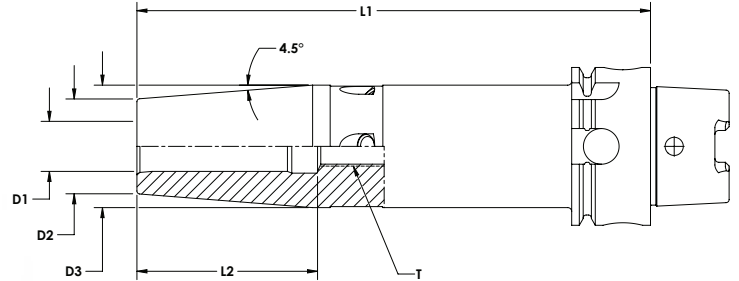
| Part Number | D1 | D2 | D3 | L1 | L2 | T |
|-------------|-------|------|------|------|-----|-------|
| H2Y3A0312 | 0.312 | 0.79 | 1.00 | 3.15 | 1.4 | M6X1 |
| H2Y3A0375 | 0.375 | 0.79 | 1.00 | 3.15 | 1.6 | M8X1 |
| H2Y3A0437 | 0.437 | 0.94 | 1.25 | 3.15 | 1.6 | M8X1 |
| H2Y3A0500 | 0.500 | 0.94 | 1.25 | 3.54 | 1.8 | M10X1 |
| H2Y3A0562 | 0.562 | 1.06 | 1.30 | 3.54 | 1.8 | M10X1 |
| H2Y3A0625 | 0.625 | 1.06 | 1.30 | 3.54 | 1.8 | M12X1 |

Metric

| Part Number | D1 | D2 | D3 | L1 | L2 | T |
|-------------|------|------|------|------|-----|-------|
| H2Y3A8006 | 6MM | 21MM | 27MM | 80MM | 1.4 | M5X1 |
| H2Y3A8008 | 8MM | 21MM | 27MM | 80MM | 1.4 | M6X1 |
| H2Y3A8010 | 10MM | 24MM | 32MM | 80MM | 1.6 | M8X1 |
| H2Y3A8012 | 12MM | 24MM | 32MM | 90MM | 1.8 | M8X1 |
| H2Y3A8014 | 14MM | 24MM | 32MM | 90MM | 1.8 | M10X1 |
| H2Y3A8016 | 16MM | 27MM | 34MM | 90MM | 1.8 | M12X1 |

Standard Gage Length

- Max T.I.R. of .0002"
- Balanced at 25,000 RPM @ G2.5



Standard

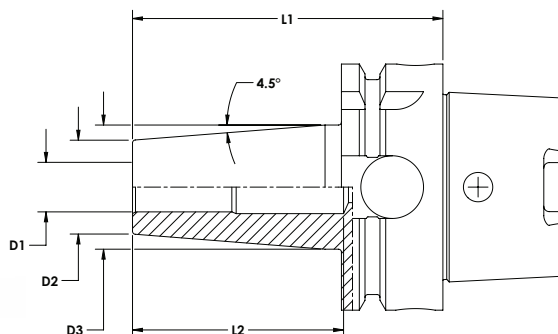
| Part Number | D1 | D2 | D3 | L1 | L2 | T |
|-------------|-------|------|------|------|-----|-------|
| H2Y4A0312 | 0.312 | 0.79 | 1.00 | 5.12 | 1.4 | M6X1 |
| H2Y4A0375 | 0.375 | 0.79 | 1.00 | 5.12 | 1.6 | M8X1 |
| H2Y4A0437 | 0.437 | 0.94 | 1.25 | 5.12 | 1.6 | M8X1 |
| H2Y4A0500 | 0.500 | 0.94 | 1.25 | 5.12 | 1.8 | M10X1 |
| H2Y4A0562 | 0.562 | 1.06 | 1.30 | 5.12 | 1.8 | M10X1 |
| H2Y4A0625 | 0.625 | 1.06 | 1.30 | 5.12 | 1.8 | M12X1 |

Metric

| Part Number | D1 | D2 | D3 | L1 | L2 | T |
|-------------|------|------|------|-------|-----|-------|
| H2Y4A8006 | 6MM | 21MM | 27MM | 130MM | 1.4 | M5X1 |
| H2Y4A8008 | 8MM | 21MM | 27MM | 130MM | 1.4 | M6X1 |
| H2Y4A8010 | 10MM | 24MM | 32MM | 130MM | 1.6 | M8X1 |
| H2Y4A8012 | 12MM | 24MM | 32MM | 130MM | 1.8 | M8X1 |
| H2Y4A8014 | 14MM | 24MM | 32MM | 130MM | 1.8 | M10X1 |
| H2Y4A8016 | 16MM | 27MM | 34MM | 130MM | 1.8 | M12X1 |



- Max T.I.R. of .0002"
- Balanced at 25,000 RPM @ G2.5



Standard

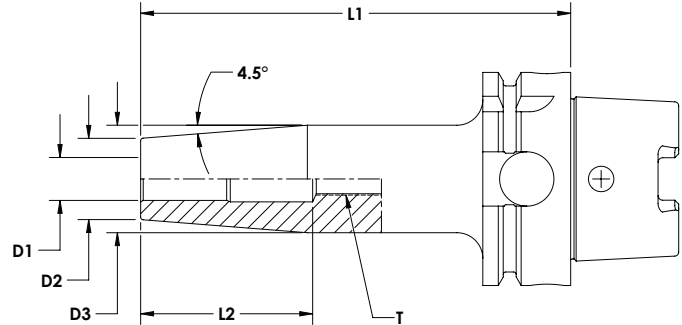
| Part Number | D1 | D2 | D3 | L1 | L2 | T |
|-------------|-------|------|------|------|-----|-------|
| H4Y3A0250 | 0.250 | 0.79 | 1.00 | 3.13 | 1.4 | M5X1 |
| H4Y3A0312 | 0.312 | 0.79 | 1.00 | 3.13 | 1.4 | M6X1 |
| H4Y3A0375 | 0.375 | 0.79 | 1.00 | 3.13 | 1.6 | M8X1 |
| H4Y3A0437 | 0.437 | 0.94 | 1.25 | 3.13 | 1.6 | M8X1 |
| H4Y3A0500 | 0.500 | 0.94 | 1.25 | 3.13 | 1.8 | M10X1 |
| H4Y3A0562 | 0.562 | 1.06 | 1.38 | 3.38 | 1.8 | M10X1 |
| H4Y3A0625 | 0.625 | 1.06 | 1.38 | 3.38 | 1.8 | M12X1 |
| H4Y3A0750 | 0.750 | 1.30 | 1.63 | 3.38 | 2.1 | M16X1 |
| H4Y3A1000 | 1.000 | 1.73 | 2.09 | 3.38 | 2.1 | M16X1 |
| H4Y3A1250 | 1.250 | 1.73 | 2.09 | 3.38 | 2.1 | M16X1 |

Metric

| Part Number | D1 | D2 | D3 | L1 | L2 | T |
|-------------|------|------|------|-------|-----|-------|
| H4Y3A8008 | 8MM | 21MM | 27MM | 80MM | 1.4 | M6X1 |
| H4Y3A8010 | 10MM | 24MM | 32MM | 85MM | 1.6 | M8X1 |
| H4Y3A8012 | 12MM | 24MM | 32MM | 90MM | 1.8 | M8X1 |
| H4Y3A8014 | 14MM | 24MM | 32MM | 90MM | 1.8 | M10X1 |
| H4Y3A8016 | 16MM | 27MM | 34MM | 95MM | 1.8 | M12X1 |
| H4Y3A8018 | 18MM | 33MM | 42MM | 95MM | 2.1 | M16X1 |
| H4Y3A8020 | 20MM | 33MM | 42MM | 100MM | 2.1 | M16X1 |
| H4Y3A8025 | 25MM | 44MM | 2.06 | 115MM | 2.1 | M16X1 |
| H4Y3A8032 | 32MM | 44MM | 2.06 | 120MM | 2.1 | M16X1 |

Standard Gage Length

- Max T.I.R. of .0002"
- Balanced at 25,000 RPM @ G2.5



Standard

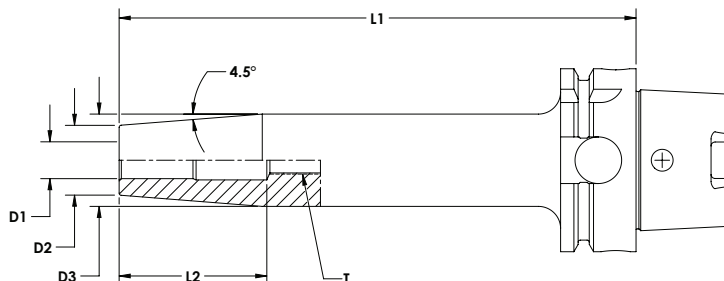
| Part Number | D1 | D2 | D3 | L1 | L2 | T |
|-------------|-------|------|------|------|-----|-------|
| H4Y4A0250 | 0.250 | 0.79 | 1.00 | 5.00 | 1.4 | M5X1 |
| H4Y4A0312 | 0.312 | 0.79 | 1.00 | 5.00 | 1.4 | M6X1 |
| H4Y4A0375 | 0.375 | 0.79 | 1.00 | 5.00 | 1.6 | M8X1 |
| H4Y4A0437 | 0.437 | 0.94 | 1.25 | 5.00 | 1.6 | M8X1 |
| H4Y4A0500 | 0.500 | 0.94 | 1.25 | 5.00 | 1.8 | M10X1 |
| H4Y4A0562 | 0.562 | 1.06 | 1.38 | 5.00 | 1.8 | M10X1 |
| H4Y4A0625 | 0.625 | 1.06 | 1.38 | 5.00 | 1.8 | M12X1 |
| H4Y4A0750 | 0.750 | 1.30 | 1.63 | 5.00 | 2.1 | M16X1 |
| H4Y4A1000 | 1.000 | 1.73 | 2.09 | 5.00 | 2.1 | M16X1 |
| H4Y4A1250 | 1.250 | 1.73 | 2.09 | 5.00 | 2.1 | M16X1 |

Metric

| Part Number | D1 | D2 | D3 | L1 | L2 | T |
|-------------|------|------|------|-------|-----|-------|
| H4Y4A8008 | 8MM | 21MM | 27MM | 130MM | 1.4 | M6X1 |
| H4Y4A8010 | 10MM | 24MM | 32MM | 130MM | 1.6 | M8X1 |
| H4Y4A8012 | 12MM | 24MM | 32MM | 130MM | 1.8 | M8X1 |
| H4Y4A8014 | 14MM | 24MM | 32MM | 130MM | 1.8 | M10X1 |
| H4Y4A8016 | 16MM | 27MM | 34MM | 130MM | 1.8 | M12X1 |
| H4Y4A8018 | 18MM | 33MM | 42MM | 130MM | 2.1 | M16X1 |
| H4Y4A8020 | 20MM | 33MM | 42MM | 130MM | 2.1 | M16X1 |
| H4Y4A8025 | 25MM | 44MM | 2.06 | 130MM | 2.1 | M16X1 |
| H4Y4A8032 | 32MM | 44MM | 2.06 | 130MM | 2.1 | M16X1 |



- Max T.I.R. of .0002"
- Balanced at 25,000 RPM @ G2.5



Standard

| Part Number | D1 | D2 | D3 | L1 | L2 | T |
|-------------|-------|------|------|------|-----|-------|
| H4Y5A0250 | 0.250 | 0.79 | 1.00 | 7.00 | 1.4 | M5X1 |
| H4Y5A0312 | 0.312 | 0.79 | 1.00 | 7.00 | 1.4 | M6X1 |
| H4Y5A0375 | 0.375 | 0.79 | 1.00 | 7.00 | 1.6 | M8X1 |
| H4Y5A0437 | 0.437 | 0.94 | 1.25 | 7.00 | 1.6 | M8X1 |
| H4Y5A0500 | 0.500 | 0.94 | 1.25 | 7.00 | 1.8 | M10X1 |
| H4Y5A0562 | 0.562 | 1.06 | 1.38 | 7.00 | 1.8 | M10X1 |
| H4Y5A0625 | 0.625 | 1.06 | 1.38 | 7.00 | 1.8 | M12X1 |
| H4Y5A0750 | 0.750 | 1.30 | 1.63 | 7.00 | 2.1 | M16X1 |
| H4Y5A1000 | 1.000 | 1.73 | 2.09 | 7.00 | 2.1 | M16X1 |
| H4Y5A1250 | 1.250 | 1.73 | 2.09 | 7.00 | 2.1 | M16X1 |

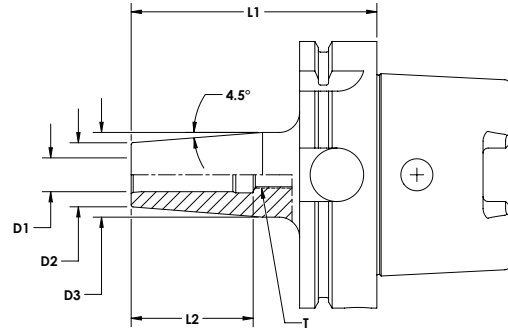
Metric

| Part Number | D1 | D2 | D3 | L1 | L2 | T |
|-------------|------|------|------|-------|-----|-------|
| H4Y5A8008 | 8MM | 21MM | 27MM | 160MM | 1.4 | M6X1 |
| H4Y5A8010 | 10MM | 24MM | 32MM | 160MM | 1.6 | M8X1 |
| H4Y5A8012 | 12MM | 24MM | 32MM | 160MM | 1.8 | M8X1 |
| H4Y5A8014 | 14MM | 24MM | 32MM | 160MM | 1.8 | M10X1 |
| H4Y5A8016 | 16MM | 27MM | 34MM | 160MM | 1.8 | M12X1 |
| H4Y5A8018 | 18MM | 33MM | 42MM | 160MM | 2.1 | M16X1 |
| H4Y5A8020 | 20MM | 33MM | 42MM | 160MM | 2.1 | M16X1 |
| H4Y5A8025 | 25MM | 44MM | 2.06 | 160MM | 2.1 | M16X1 |
| H4Y5A8032 | 32MM | 44MM | 2.06 | 160MM | 2.1 | M16X1 |

Stub Gage Length



- Max T.I.R. of .0002"
- Balanced at 25,000 RPM @ G2.5



Standard

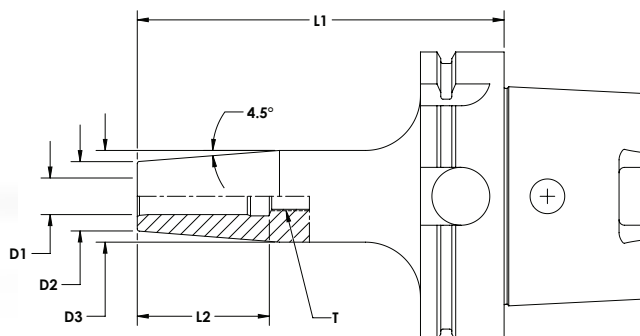
| Part Number | D1 | D2 | D3 | L1 | L2 | T |
|-------------|-------|------|------|------|-----|-------|
| H6Y3A0250 | 0.250 | 0.79 | 1.00 | 3.38 | 1.4 | M5X1 |
| H6Y3A0312 | 0.312 | 0.79 | 1.00 | 3.38 | 1.4 | M6X1 |
| H6Y3A0375 | 0.375 | 0.79 | 1.00 | 3.63 | 1.6 | M8X1 |
| H6Y3A0437 | 0.437 | 0.94 | 1.25 | 3.63 | 1.6 | M8X1 |
| H6Y3A0500 | 0.500 | 0.94 | 1.25 | 3.63 | 1.8 | M10X1 |
| H6Y3A0562 | 0.562 | 1.06 | 1.38 | 3.63 | 1.8 | M10X1 |
| H6Y3A0625 | 0.625 | 1.06 | 1.38 | 3.63 | 1.8 | M12X1 |
| H6Y3A0750 | 0.750 | 1.30 | 1.63 | 3.63 | 2.1 | M16X1 |
| H6Y3A1000 | 1.000 | 1.73 | 2.09 | 3.63 | 2.1 | M16X1 |
| H6Y3A1250 | 1.250 | 1.73 | 2.09 | 3.63 | 2.1 | M16X1 |

Metric

| Part Number | D1 | D2 | D3 | L1 | L2 | T |
|-------------|------|------|------|-------|-----|-------|
| H6Y3A8008 | 8MM | 21MM | 27MM | 85MM | 1.4 | M6X1 |
| H6Y3A8010 | 10MM | 24MM | 32MM | 90MM | 1.6 | M8X1 |
| H6Y3A8012 | 12MM | 24MM | 32MM | 95MM | 1.8 | M8X1 |
| H6Y3A8014 | 14MM | 24MM | 32MM | 95MM | 1.8 | M10X1 |
| H6Y3A8016 | 16MM | 27MM | 34MM | 100MM | 1.8 | M12X1 |
| H6Y3A8018 | 18MM | 33MM | 42MM | 105MM | 2.1 | M16X1 |
| H6Y3A8020 | 20MM | 33MM | 42MM | 105MM | 2.1 | M16X1 |
| H6Y3A8025 | 25MM | 44MM | 53MM | 115MM | 2.1 | M16X1 |
| H6Y3A8032 | 32MM | 44MM | 53MM | 120MM | 2.1 | M16X1 |



- Max T.I.R. of .0002"
- Balanced at 25,000 RPM @ G2.5



Standard

| Part Number | D1 | D2 | D3 | L1 | L2 | T |
|-------------|-------|------|------|------|-----|-------|
| H6Y4A0250 | 0.250 | 0.79 | 1.00 | 5.00 | 1.4 | M5X1 |
| H6Y4A0312 | 0.312 | 0.79 | 1.00 | 5.00 | 1.4 | M6X1 |
| H6Y4A0375 | 0.375 | 0.79 | 1.00 | 5.00 | 1.6 | M8X1 |
| H6Y4A0437 | 0.437 | 0.94 | 1.25 | 5.00 | 1.6 | M8X1 |
| H6Y4A0500 | 0.500 | 0.94 | 1.25 | 5.00 | 1.8 | M10X1 |
| H6Y4A0562 | 0.562 | 1.06 | 1.38 | 5.00 | 1.8 | M10X1 |
| H6Y4A0625 | 0.625 | 1.06 | 1.38 | 5.00 | 1.8 | M12X1 |
| H6Y4A0750 | 0.750 | 1.30 | 1.63 | 5.00 | 2.1 | M16X1 |
| H6Y4A1000 | 1.000 | 1.73 | 2.09 | 5.00 | 2.1 | M16X1 |
| H6Y4A1250 | 1.250 | 1.73 | 2.09 | 5.00 | 2.1 | M16X1 |

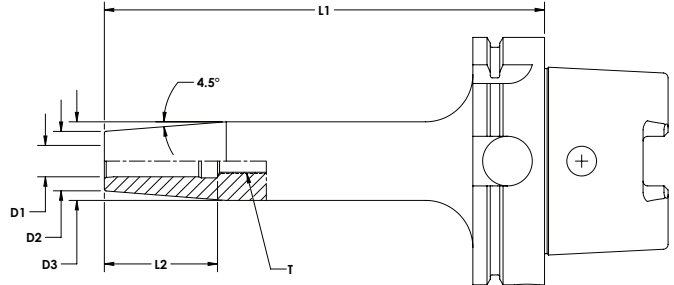
Metric

| Part Number | D1 | D2 | D3 | L1 | L2 | T |
|-------------|------|------|------|-------|-----|-------|
| H6Y4A8008 | 8MM | 21MM | 27MM | 130MM | 1.4 | M6X1 |
| H6Y4A8010 | 10MM | 24MM | 32MM | 130MM | 1.6 | M8X1 |
| H6Y4A8012 | 12MM | 24MM | 32MM | 130MM | 1.8 | M8X1 |
| H6Y4A8014 | 14MM | 24MM | 32MM | 130MM | 1.8 | M10X1 |
| H6Y4A8016 | 16MM | 27MM | 34MM | 130MM | 1.8 | M12X1 |
| H6Y4A8018 | 18MM | 33MM | 42MM | 130MM | 2.1 | M16X1 |
| H6Y4A8020 | 20MM | 33MM | 42MM | 130MM | 2.1 | M16X1 |
| H6Y4A8025 | 25MM | 44MM | 53MM | 160MM | 2.1 | M16X1 |
| H6Y4A8032 | 32MM | 44MM | 53MM | 160MM | 2.1 | M16X1 |

Extended Gage Length



- Max T.I.R. of .0002"
- Balanced at 25,000 RPM @ G2.5



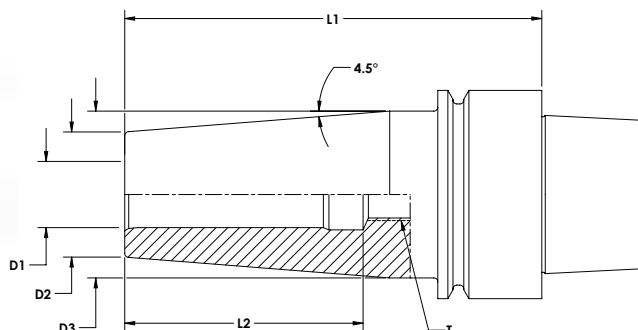
Standard

| Part Number | D1 | D2 | D3 | L1 | L2 | T |
|-------------|-------|------|------|------|-----|-------|
| H6Y5A0250 | 0.250 | 0.79 | 1.00 | 7.00 | 1.4 | M5X1 |
| H6Y5A0312 | 0.312 | 0.79 | 1.00 | 7.00 | 1.4 | M6X1 |
| H6Y5A0375 | 0.375 | 0.79 | 1.00 | 7.00 | 1.6 | M8X1 |
| H6Y5A0437 | 0.437 | 0.94 | 1.25 | 7.00 | 1.6 | M8X1 |
| H6Y5A0500 | 0.500 | 0.94 | 1.25 | 7.00 | 1.8 | M10X1 |
| H6Y5A0562 | 0.562 | 1.06 | 1.38 | 7.00 | 1.8 | M10X1 |
| H6Y5A0625 | 0.625 | 1.06 | 1.38 | 7.00 | 1.8 | M12X1 |
| H6Y5A0750 | 0.750 | 1.30 | 1.63 | 7.00 | 2.1 | M16X1 |
| H6Y5A1000 | 1.000 | 1.73 | 2.09 | 7.00 | 2.1 | M16X1 |
| H6Y5A1250 | 1.250 | 1.73 | 2.09 | 7.00 | 2.1 | M16X1 |

Metric

| Part Number | D1 | D2 | D3 | L1 | L2 | T |
|-------------|------|------|------|-------|-----|-------|
| H6Y5A8008 | 8MM | 21MM | 27MM | 160MM | 1.4 | M6X1 |
| H6Y5A8010 | 10MM | 24MM | 32MM | 160MM | 1.6 | M8X1 |
| H6Y5A8012 | 12MM | 24MM | 32MM | 160MM | 1.8 | M8X1 |
| H6Y5A8014 | 14MM | 24MM | 32MM | 160MM | 1.8 | M10X1 |
| H6Y5A8016 | 16MM | 27MM | 34MM | 160MM | 1.8 | M12X1 |
| H6Y5A8018 | 18MM | 33MM | 42MM | 160MM | 2.1 | M16X1 |
| H6Y5A8020 | 20MM | 33MM | 42MM | 160MM | 2.1 | M16X1 |
| H6Y5A8025 | 25MM | 44MM | 53MM | 200MM | 2.1 | M16X1 |
| H6Y5A8032 | 32MM | 44MM | 53MM | 200MM | 2.1 | M16X1 |

- Max T.I.R. of .0002"
- Balanced at 25,000 RPM @ G2.5



Standard

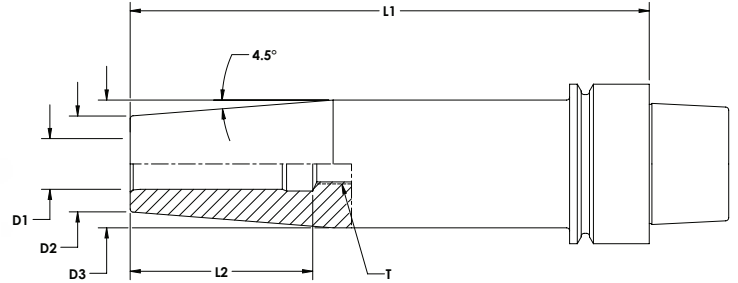
| Part Number | D1 | D2 | D3 | L1 | L2 | T |
|-------------|-------|------|------|------|-----|-------|
| H2Y3E0312 | 0.312 | 0.79 | 1.00 | 3.15 | 1.4 | M6X1 |
| H2Y3E0375 | 0.375 | 0.79 | 1.00 | 3.15 | 1.6 | M8X1 |
| H2Y3E0437 | 0.437 | 0.94 | 1.25 | 3.15 | 1.6 | M8X1 |
| H2Y3E0500 | 0.500 | 0.94 | 1.25 | 3.54 | 1.8 | M10X1 |
| H2Y3E0562 | 0.562 | 1.06 | 1.30 | 3.54 | 1.8 | M10X1 |
| H2Y3E0625 | 0.625 | 1.06 | 1.30 | 3.54 | 1.8 | M12X1 |

Metric

| Part Number | D1 | D2 | D3 | L1 | L2 | T |
|-------------|------|------|------|------|-----|-------|
| H2Y3E8006 | 6MM | 21MM | 27MM | 80MM | 1.4 | M5X1 |
| H2Y3E8008 | 8MM | 21MM | 27MM | 80MM | 1.4 | M6X1 |
| H2Y3E8010 | 10MM | 24MM | 32MM | 80MM | 1.6 | M8X1 |
| H2Y3E8012 | 12MM | 24MM | 32MM | 90MM | 1.8 | M8X1 |
| H2Y3E8014 | 14MM | 24MM | 32MM | 90MM | 1.8 | M10X1 |
| H2Y3E8016 | 16MM | 27MM | 34MM | 90MM | 1.8 | M12X1 |

Standard Gage Length

- Max T.I.R. of .0002"
- Balanced at 25,000 RPM @ G2.5



Standard

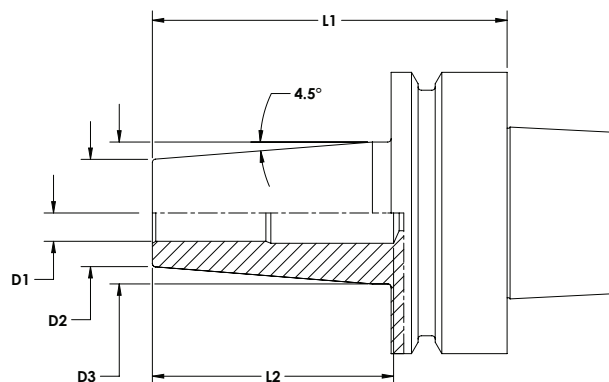
| Part Number | D1 | D2 | D3 | L1 | L2 | T |
|-------------|-------|------|------|------|-----|-------|
| H2Y4E0312 | 0.312 | 0.79 | 1.00 | 5.12 | 1.4 | M6X1 |
| H2Y4E0375 | 0.375 | 0.79 | 1.00 | 5.12 | 1.6 | M8X1 |
| H2Y4E0437 | 0.437 | 0.94 | 1.25 | 5.12 | 1.6 | M8X1 |
| H2Y4E0500 | 0.500 | 0.94 | 1.25 | 5.12 | 1.8 | M10X1 |
| H2Y4E0562 | 0.562 | 1.06 | 1.30 | 5.12 | 1.8 | M10X1 |
| H2Y4E0625 | 0.625 | 1.06 | 1.30 | 5.12 | 1.8 | M12X1 |

Metric

| Part Number | D1 | D2 | D3 | L1 | L2 | T |
|-------------|------|------|------|-------|-----|-------|
| H2Y4E8006 | 6MM | 21MM | 27MM | 130MM | 1.4 | M5X1 |
| H2Y4E8008 | 8MM | 21MM | 27MM | 130MM | 1.4 | M6X1 |
| H2Y4E8010 | 10MM | 24MM | 32MM | 130MM | 1.6 | M8X1 |
| H2Y4E8012 | 12MM | 24MM | 32MM | 130MM | 1.8 | M8X1 |
| H2Y4E8014 | 14MM | 24MM | 32MM | 130MM | 1.8 | M10X1 |
| H2Y4E8016 | 16MM | 27MM | 34MM | 130MM | 1.8 | M12X1 |



- Max T.I.R. of .0002"
- Balanced at 25,000 RPM @ G2.5



Standard

| Part Number | D1 | D2 | D3 | L1 | L2 | T |
|-------------|-------|------|------|------|-----|-------|
| H4Y3F0312 | 0.312 | 0.79 | 1.00 | 3.13 | 1.4 | M6X1 |
| H4Y3F0375 | 0.375 | 0.79 | 1.00 | 3.13 | 1.6 | M8X1 |
| H4Y3F0437 | 0.437 | 0.94 | 1.25 | 3.13 | 1.6 | M8X1 |
| H4Y3F0500 | 0.500 | 0.94 | 1.25 | 3.13 | 1.8 | M10X1 |
| H4Y3F0562 | 0.562 | 1.06 | 1.38 | 3.38 | 1.8 | M10X1 |
| H4Y3F0625 | 0.625 | 1.06 | 1.38 | 3.38 | 1.8 | M12X1 |
| H4Y3F0750 | 0.750 | 1.30 | 1.63 | 3.94 | 2.1 | M16X1 |

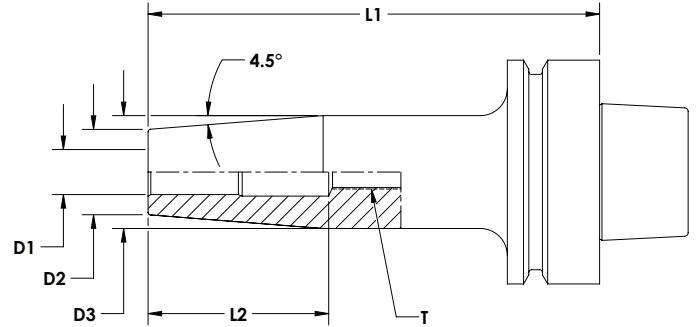
Metric

| Part Number | D1 | D2 | D3 | L1 | L2 | T |
|-------------|------|------|------|-------|-----|-------|
| H4Y3F8008 | 8MM | 21MM | 27MM | 80MM | 1.4 | M6X1 |
| H4Y3F8010 | 10MM | 24MM | 32MM | 85MM | 1.6 | M8X1 |
| H4Y3F8012 | 12MM | 24MM | 32MM | 90MM | 1.8 | M8X1 |
| H4Y3F8014 | 14MM | 24MM | 32MM | 90MM | 1.8 | M10X1 |
| H4Y3F8016 | 16MM | 27MM | 34MM | 95MM | 1.8 | M12X1 |
| H4Y3F8020 | 20MM | 33MM | 42MM | 100MM | 2.1 | M16X1 |

Standard Gage Length



- Max T.I.R. of .0002"
- Balanced at 25,000 RPM @ G2.5



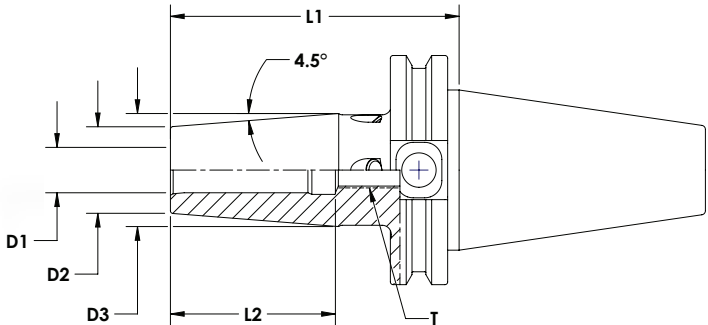
Standard

| Part Number | D1 | D2 | D3 | L1 | L2 | T |
|-------------|-------|------|------|------|-----|-------|
| H4Y4F0312 | 0.312 | 0.79 | 1.00 | 5.00 | 1.4 | M6X1 |
| H4Y4F0375 | 0.375 | 0.79 | 1.00 | 5.00 | 1.6 | M8X1 |
| H4Y4F0437 | 0.437 | 0.94 | 1.25 | 5.00 | 1.6 | M8X1 |
| H4Y4F0500 | 0.500 | 0.94 | 1.25 | 5.00 | 1.8 | M10X1 |
| H4Y4F0562 | 0.562 | 1.06 | 1.38 | 5.00 | 1.8 | M10X1 |
| H4Y4F0625 | 0.625 | 1.06 | 1.38 | 5.00 | 1.8 | M12X1 |
| H4Y4F0750 | 0.750 | 1.30 | 1.63 | 5.00 | 2.1 | M16X1 |

Metric

| Part Number | D1 | D2 | D3 | L1 | L2 | T |
|-------------|------|------|------|-------|-----|-------|
| H4Y4F8008 | 8MM | 21MM | 27MM | 120MM | 1.4 | M6X1 |
| H4Y4F8010 | 10MM | 24MM | 32MM | 120MM | 1.6 | M8X1 |
| H4Y4F8012 | 12MM | 24MM | 32MM | 120MM | 1.8 | M8X1 |
| H4Y4F8014 | 14MM | 24MM | 32MM | 120MM | 1.8 | M10X1 |
| H4Y4F8016 | 16MM | 27MM | 34MM | 120MM | 1.8 | M12X1 |
| H4Y4F8020 | 20MM | 33MM | 42MM | 120MM | 2.1 | M16X1 |

- Max T.I.R. of .0002"
- Balanced at 25,000 RPM @ G2.5
- Adjustable Balance Screws



Standard

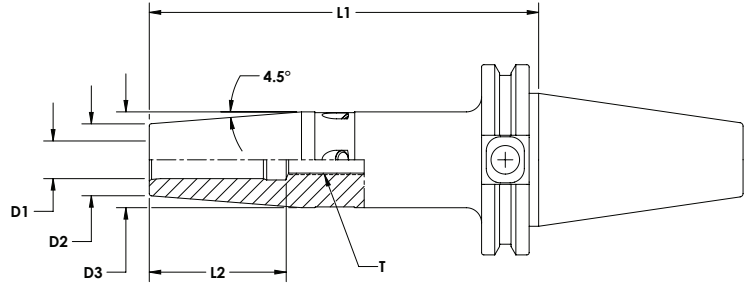
| Part Number | D1 | D2 | D3 | L1 | L2 | T |
|-------------|-------|------|------|------|-----|-------|
| C4L3-0125 | 0.125 | 0.39 | - | 3.15 | - | - |
| C4L3-0187 | 0.187 | 0.39 | - | 3.15 | - | - |
| C4L3-0250 | 0.250 | 0.83 | 1.06 | 3.15 | 1.4 | M5X1 |
| C4L3-0312 | 0.312 | 0.83 | 1.06 | 3.15 | 1.4 | M6X1 |
| C4L3-0375 | 0.375 | 0.94 | 1.26 | 3.15 | 1.6 | M8X1 |
| C4L3-0437 | 0.437 | 0.94 | 1.26 | 3.15 | 1.6 | M8X1 |
| C4L3-0500 | 0.500 | 0.94 | 1.26 | 3.15 | 1.8 | M10X1 |
| C4L3-0625 | 0.625 | 1.06 | 1.34 | 3.15 | 1.8 | M12X1 |
| C4L3-0750 | 0.750 | 1.30 | 1.65 | 3.15 | 2.1 | M16X1 |
| C4L3-0875 | 0.875 | 1.30 | 1.65 | 3.15 | 2.1 | M16X1 |
| C4L3-1000 | 1.000 | 1.73 | 2.09 | 3.93 | 2.1 | M16X1 |
| C4L3-1250 | 1.250 | 1.73 | 2.09 | 3.93 | 2.1 | M16X1 |

Metric

| Part Number | D1 | D2 | D3 | L1 | L2 | T |
|-------------|------|------|------|-------|-----|-------|
| C4L3-8003 | 3MM | 10MM | - | 80MM | - | - |
| C4L3-8004 | 4MM | 10MM | - | 80MM | - | - |
| C4L3-8005 | 5MM | 10MM | - | 80MM | - | - |
| C4L3-8006 | 6MM | 21MM | 27MM | 80MM | 1.4 | M5X1 |
| C4L3-8008 | 8MM | 21MM | 27MM | 80MM | 1.4 | M6X1 |
| C4L3-8010 | 10MM | 24MM | 32MM | 80MM | 1.6 | M8X1 |
| C4L3-8012 | 12MM | 24MM | 32MM | 80MM | 1.6 | M8X1 |
| C4L3-8014 | 14MM | 27MM | 34MM | 80MM | 1.8 | M10X1 |
| C4L3-8016 | 16MM | 27MM | 34MM | 80MM | 1.8 | M12X1 |
| C4L3-8020 | 20MM | 33MM | 42MM | 80MM | 2.1 | M16X1 |
| C4L3-8025 | 25MM | 44MM | 53MM | 100MM | 2.1 | M16X1 |
| C4L3-8032 | 32MM | 44MM | 53MM | 100MM | 2.1 | M16X1 |

Standard Gage Length

- Max T.I.R. of .0002"
- Balanced at 25,000 RPM @ G2.5
- Adjustable Balance Screws



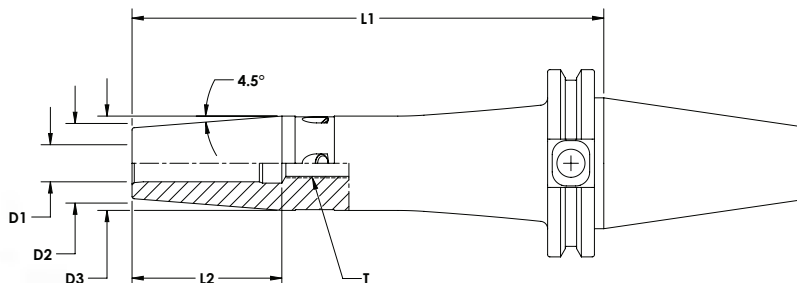
Standard

| Part Number | D1 | D2 | D3 | L1 | L2 | T |
|-------------|-------|------|------|------|-----|-------|
| C4L4-0250 | 0.250 | 0.83 | 1.06 | 5.12 | 1.4 | M5X1 |
| C4L4-0312 | 0.312 | 0.83 | 1.06 | 5.12 | 1.4 | M6X1 |
| C4L4-0375 | 0.375 | 0.94 | 1.26 | 5.12 | 1.6 | M8X1 |
| C4L4-0437 | 0.437 | 0.94 | 1.26 | 5.12 | 1.6 | M8X1 |
| C4L4-0500 | 0.500 | 0.94 | 1.26 | 5.12 | 1.8 | M10X1 |
| C4L4-0625 | 0.625 | 1.06 | 1.34 | 5.12 | 1.8 | M12X1 |
| C4L4-0750 | 0.750 | 1.30 | 1.65 | 5.12 | 2.1 | M16X1 |
| C4L4-0875 | 0.875 | 1.30 | 1.65 | 5.12 | 2.1 | M16X1 |
| C4L4-1000 | 1.000 | 1.73 | 2.09 | 5.12 | 2.1 | M16X1 |
| C4L4-1250 | 1.250 | 1.73 | 2.09 | 5.12 | 2.1 | M16X1 |

Metric

| Part Number | D1 | D2 | D3 | L1 | L2 | T |
|-------------|------|------|------|-------|-----|-------|
| C4L4-8006 | 6MM | 21MM | 27MM | 130MM | 1.4 | M5X1 |
| C4L4-8008 | 8MM | 21MM | 27MM | 130MM | 1.4 | M6X1 |
| C4L4-8010 | 10MM | 24MM | 32MM | 130MM | 1.6 | M8X1 |
| C4L4-8012 | 12MM | 24MM | 32MM | 130MM | 1.6 | M8X1 |
| C4L4-8014 | 14MM | 27MM | 34MM | 130MM | 1.8 | M10X1 |
| C4L4-8016 | 16MM | 27MM | 34MM | 130MM | 1.8 | M12X1 |
| C4L4-8020 | 20MM | 33MM | 42MM | 130MM | 2.1 | M16X1 |
| C4L4-8025 | 25MM | 44MM | 53MM | 130MM | 2.1 | M16X1 |
| C4L4-8032 | 32MM | 44MM | 53MM | 130MM | 2.1 | M16X1 |

- Parabolic Profile to Maximize Rigidity
- Max T.I.R. of .0002"
- Balanced at 25,000 RPM @ G2.5
- Adjustable Balance Screws



Standard

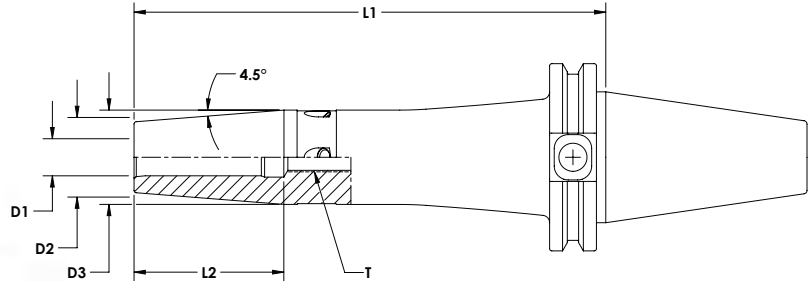
| Part Number | D1 | D2 | D3 | L1 | L2 | T |
|-------------|-------|------|------|------|-----|-------|
| C4L5-0250 | 0.250 | 0.83 | 1.06 | 6.30 | 1.4 | M5X1 |
| C4L5-0312 | 0.312 | 0.83 | 1.06 | 6.30 | 1.4 | M6X1 |
| C4L5-0375 | 0.375 | 0.94 | 1.26 | 6.30 | 1.6 | M8X1 |
| C4L5-0437 | 0.437 | 0.94 | 1.26 | 6.30 | 1.6 | M8X1 |
| C4L5-0500 | 0.500 | 0.94 | 1.26 | 6.30 | 1.8 | M10X1 |
| C4L5-0625 | 0.625 | 1.06 | 1.34 | 6.30 | 1.8 | M12X1 |
| C4L5-0750 | 0.750 | 1.30 | 1.65 | 6.30 | 2.1 | M16X1 |
| C4L5-0875 | 0.875 | 1.30 | 1.65 | 6.30 | 2.1 | M16X1 |
| C4L5-1000 | 1.000 | 1.73 | 2.09 | 6.30 | 2.1 | M16X1 |
| C4L5-1250 | 1.250 | 1.73 | 2.09 | 6.30 | 2.1 | M16X1 |

Metric

| Part Number | D1 | D2 | D3 | L1 | L2 | T |
|-------------|------|------|------|-------|-----|-------|
| C4L5-8006 | 6MM | 21MM | 27MM | 160MM | 1.4 | M5X1 |
| C4L5-8008 | 8MM | 21MM | 27MM | 160MM | 1.4 | M6X1 |
| C4L5-8010 | 10MM | 24MM | 32MM | 160MM | 1.6 | M8X1 |
| C4L5-8012 | 12MM | 24MM | 32MM | 160MM | 1.6 | M8X1 |
| C4L5-8014 | 14MM | 27MM | 34MM | 160MM | 1.8 | M10X1 |
| C4L5-8016 | 16MM | 27MM | 34MM | 160MM | 1.8 | M12X1 |
| C4L5-8020 | 20MM | 33MM | 42MM | 160MM | 2.1 | M16X1 |
| C4L5-8025 | 25MM | 44MM | 53MM | 160MM | 2.1 | M16X1 |
| C4L5-8032 | 32MM | 44MM | 53MM | 160MM | 2.1 | M16X1 |

Extra Extended Gage Length

- Parabolic Profile to Maximize Rigidity
- Max T.I.R. of .0002"
- Balanced at 25,000 RPM @ G2.5
- Adjustable Balance Screws



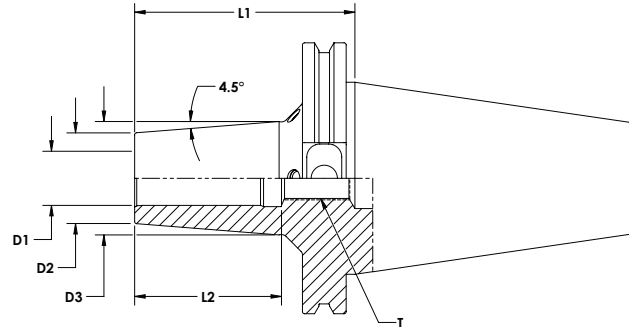
Standard

| Part Number | D1 | D2 | D3 | L1 | L2 | T |
|-------------|-------|------|------|------|-----|-------|
| C4L6-0250 | 0.250 | 0.83 | 1.06 | 7.48 | 1.4 | M5X1 |
| C4L6-0312 | 0.312 | 0.83 | 1.06 | 7.48 | 1.4 | M6X1 |
| C4L6-0375 | 0.375 | 0.94 | 1.26 | 7.48 | 1.6 | M8X1 |
| C4L6-0437 | 0.437 | 0.94 | 1.26 | 7.48 | 1.6 | M8X1 |
| C4L6-0500 | 0.500 | 0.94 | 1.26 | 7.48 | 1.8 | M10X1 |
| C4L6-0625 | 0.625 | 1.06 | 1.34 | 7.48 | 1.8 | M12X1 |
| C4L6-0750 | 0.750 | 1.30 | 1.65 | 7.48 | 2.1 | M16X1 |
| C4L6-0875 | 0.875 | 1.30 | 1.65 | 7.48 | 2.1 | M16X1 |
| C4L6-1000 | 1.000 | 1.73 | 2.09 | 7.48 | 2.1 | M16X1 |
| C4L6-1250 | 1.250 | 1.73 | 2.09 | 7.48 | 2.1 | M16X1 |

Metric

| Part Number | D1 | D2 | D3 | L1 | L2 | T |
|-------------|------|------|------|-------|-----|-------|
| C4L6-8006 | 6MM | 21MM | 27MM | 190MM | 1.4 | M5X1 |
| C4L6-8008 | 8MM | 21MM | 27MM | 190MM | 1.4 | M6X1 |
| C4L6-8010 | 10MM | 24MM | 32MM | 190MM | 1.6 | M8X1 |
| C4L6-8012 | 12MM | 24MM | 32MM | 190MM | 1.6 | M8X1 |
| C4L6-8014 | 14MM | 27MM | 34MM | 190MM | 1.8 | M10X1 |
| C4L6-8016 | 16MM | 27MM | 34MM | 190MM | 1.8 | M12X1 |
| C4L6-8020 | 20MM | 33MM | 42MM | 190MM | 2.1 | M16X1 |
| C4L6-8025 | 25MM | 44MM | 53MM | 190MM | 2.1 | M16X1 |
| C4L6-8032 | 32MM | 44MM | 53MM | 190MM | 2.1 | M16X1 |

- Max T.I.R. of .0002"
- Balanced at 25,000 RPM @ G2.5
- Adjustable Balance Screws



Standard

| Part Number | D1 | D2 | D3 | L1 | L2 | T |
|-------------|-------|------|------|------|-----|-------|
| C6L3-0250 | 0.250 | 0.83 | 1.06 | 3.15 | 1.4 | M5X1 |
| C6L3-0312 | 0.312 | 0.83 | 1.06 | 3.15 | 1.4 | M6X1 |
| C6L3-0375 | 0.375 | 0.94 | 1.26 | 3.15 | 1.6 | M8X1 |
| C6L3-0437 | 0.437 | 0.94 | 1.26 | 3.15 | 1.6 | M8X1 |
| C6L3-0500 | 0.500 | 0.94 | 1.26 | 3.15 | 1.8 | M10X1 |
| C6L3-0625 | 0.625 | 1.06 | 1.34 | 3.15 | 1.8 | M12X1 |
| C6L3-0750 | 0.750 | 1.30 | 1.65 | 3.15 | 2.1 | M16X1 |
| C6L3-0875 | 0.875 | 1.30 | 1.65 | 3.15 | 2.1 | M16X1 |
| C6L3-1000 | 1.000 | 1.73 | 2.09 | 3.93 | 2.1 | M16X1 |
| C6L3-1250 | 1.250 | 1.73 | 2.09 | 3.93 | 2.1 | M16X1 |

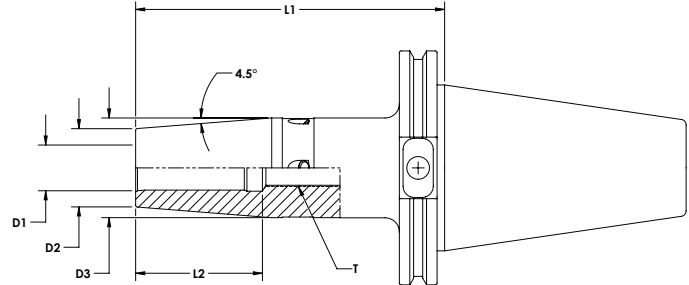
Metric

| Part Number | D1 | D2 | D3 | L1 | L2 | T |
|-------------|------|------|------|-------|-----|-------|
| C6L3-8006 | 6MM | 21MM | 27MM | 80MM | 1.4 | M5X1 |
| C6L3-8008 | 8MM | 21MM | 27MM | 80MM | 1.4 | M6X1 |
| C6L3-8010 | 10MM | 24MM | 32MM | 80MM | 1.6 | M8X1 |
| C6L3-8012 | 12MM | 24MM | 32MM | 80MM | 1.6 | M8X1 |
| C6L3-8014 | 14MM | 27MM | 34MM | 80MM | 1.8 | M10X1 |
| C6L3-8016 | 16MM | 27MM | 34MM | 80MM | 1.8 | M12X1 |
| C6L3-8020 | 20MM | 33MM | 42MM | 80MM | 2.1 | M16X1 |
| C6L3-8025 | 25MM | 44MM | 53MM | 100MM | 2.1 | M16X1 |
| C6L3-8032 | 32MM | 44MM | 53MM | 100MM | 2.1 | M16X1 |

Standard Gage Length



- Max T.I.R. of .0002"
- Balanced at 25,000 RPM @ G2.5
- Adjustable Balance Screws



Standard

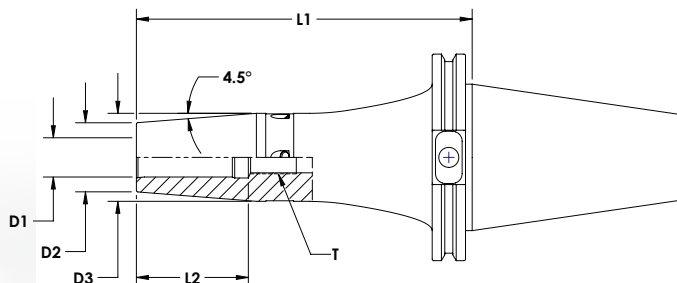
| Part Number | D1 | D2 | D3 | L1 | L2 | T |
|-------------|-------|------|------|------|-----|-------|
| C6L4-0250 | 0.250 | 0.83 | 1.06 | 5.12 | 1.4 | M5X1 |
| C6L4-0312 | 0.312 | 0.83 | 1.06 | 5.12 | 1.4 | M6X1 |
| C6L4-0375 | 0.375 | 0.94 | 1.26 | 5.12 | 1.6 | M8X1 |
| C6L4-0437 | 0.437 | 0.94 | 1.26 | 5.12 | 1.6 | M8X1 |
| C6L4-0500 | 0.500 | 0.94 | 1.26 | 5.12 | 1.8 | M10X1 |
| C6L4-0625 | 0.625 | 1.06 | 1.34 | 5.12 | 1.8 | M12X1 |
| C6L4-0750 | 0.750 | 1.30 | 1.65 | 5.12 | 2.1 | M16X1 |
| C6L4-0875 | 0.875 | 1.30 | 1.65 | 5.12 | 2.1 | M16X1 |
| C6L4-1000 | 1.000 | 1.73 | 2.09 | 5.12 | 2.1 | M16X1 |
| C6L4-1250 | 1.250 | 1.73 | 2.09 | 5.12 | 2.1 | M16X1 |

Metric

| Part Number | D1 | D2 | D3 | L1 | L2 | T |
|-------------|------|------|------|-------|-----|-------|
| C6L4-8006 | 6MM | 21MM | 27MM | 130MM | 1.4 | M5X1 |
| C6L4-8008 | 8MM | 21MM | 27MM | 130MM | 1.4 | M6X1 |
| C6L4-8010 | 10MM | 24MM | 32MM | 130MM | 1.6 | M8X1 |
| C6L4-8012 | 12MM | 24MM | 32MM | 130MM | 1.6 | M8X1 |
| C6L4-8014 | 14MM | 27MM | 34MM | 130MM | 1.8 | M10X1 |
| C6L4-8016 | 16MM | 27MM | 34MM | 130MM | 1.8 | M12X1 |
| C6L4-8020 | 20MM | 33MM | 42MM | 130MM | 2.1 | M16X1 |
| C6L4-8025 | 25MM | 44MM | 53MM | 130MM | 2.1 | M16X1 |
| C6L4-8032 | 32MM | 44MM | 53MM | 130MM | 2.1 | M16X1 |



- Parabolic Profile to Maximize Rigidity
- Max T.I.R. of .0002"
- Balanced at 25,000 RPM @ G2.5
- Adjustable Balance Screws



Standard

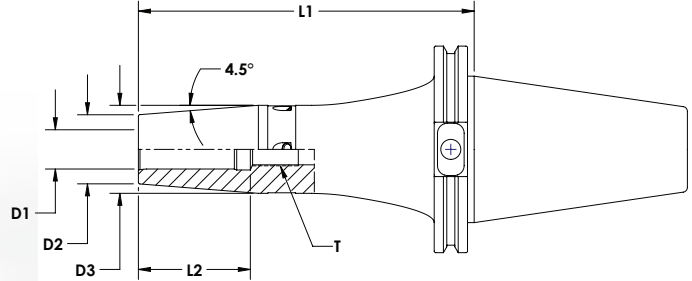
| Part Number | D1 | D2 | D3 | L1 | L2 | T |
|-------------|-------|------|------|------|-----|-------|
| C6L5-0250 | 0.250 | 0.83 | 1.06 | 6.30 | 1.4 | M5X1 |
| C6L5-0312 | 0.312 | 0.83 | 1.06 | 6.30 | 1.4 | M6X1 |
| C6L5-0375 | 0.375 | 0.94 | 1.26 | 6.30 | 1.6 | M8X1 |
| C6L5-0437 | 0.437 | 0.94 | 1.26 | 6.30 | 1.6 | M8X1 |
| C6L5-0500 | 0.500 | 0.94 | 1.26 | 6.30 | 1.8 | M10X1 |
| C6L5-0625 | 0.625 | 1.06 | 1.34 | 6.30 | 1.8 | M12X1 |
| C6L5-0750 | 0.750 | 1.30 | 1.65 | 6.30 | 2.1 | M16X1 |
| C6L5-0875 | 0.875 | 1.30 | 1.65 | 6.30 | 2.1 | M16X1 |
| C6L5-1000 | 1.000 | 1.73 | 2.09 | 6.30 | 2.1 | M16X1 |
| C6L5-1250 | 1.250 | 1.73 | 2.09 | 6.30 | 2.1 | M16X1 |

Metric

| Part Number | D1 | D2 | D3 | L1 | L2 | T |
|-------------|------|------|------|-------|-----|-------|
| C6L5-8006 | 6MM | 21MM | 27MM | 160MM | 1.4 | M5X1 |
| C6L5-8008 | 8MM | 21MM | 27MM | 160MM | 1.4 | M6X1 |
| C6L5-8010 | 10MM | 24MM | 32MM | 160MM | 1.6 | M8X1 |
| C6L5-8012 | 12MM | 24MM | 32MM | 160MM | 1.6 | M8X1 |
| C6L5-8014 | 14MM | 27MM | 34MM | 160MM | 1.8 | M10X1 |
| C6L5-8016 | 16MM | 27MM | 34MM | 160MM | 1.8 | M12X1 |
| C6L5-8020 | 20MM | 33MM | 42MM | 160MM | 2.1 | M16X1 |
| C6L5-8025 | 25MM | 44MM | 53MM | 160MM | 2.1 | M16X1 |
| C6L5-8032 | 32MM | 44MM | 53MM | 160MM | 2.1 | M16X1 |

Extra Extended Gage Length

- Parabolic Profile to Maximize Rigidity
- Max T.I.R. of .0002"
- Balanced at 25,000 RPM @ G2.5
- Adjustable Balance Screws



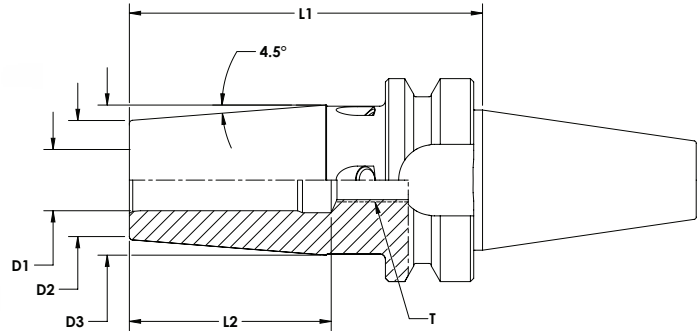
Standard

| Part Number | D1 | D2 | D3 | L1 | L2 | T |
|-------------|-------|------|------|------|-----|-------|
| C6L6-0250 | 0.250 | 0.83 | 1.06 | 7.48 | 1.4 | M5X1 |
| C6L6-0312 | 0.312 | 0.83 | 1.06 | 7.48 | 1.4 | M6X1 |
| C6L6-0375 | 0.375 | 0.94 | 1.26 | 7.48 | 1.6 | M8X1 |
| C6L6-0437 | 0.437 | 0.94 | 1.26 | 7.48 | 1.6 | M8X1 |
| C6L6-0500 | 0.500 | 0.94 | 1.26 | 7.48 | 1.8 | M10X1 |
| C6L6-0625 | 0.625 | 1.06 | 1.34 | 7.48 | 1.8 | M12X1 |
| C6L6-0750 | 0.750 | 1.30 | 1.65 | 7.48 | 2.1 | M16X1 |
| C6L6-0875 | 0.875 | 1.30 | 1.65 | 7.48 | 2.1 | M16X1 |
| C6L6-1000 | 1.000 | 1.73 | 2.09 | 7.48 | 2.1 | M16X1 |
| C6L6-1250 | 1.250 | 1.73 | 2.09 | 7.48 | 2.1 | M16X1 |

Metric

| Part Number | D1 | D2 | D3 | L1 | L2 | T |
|-------------|------|------|------|-------|-----|-------|
| C6L6-8006 | 6MM | 21MM | 27MM | 190MM | 1.4 | M5X1 |
| C6L6-8008 | 8MM | 21MM | 27MM | 190MM | 1.4 | M6X1 |
| C6L6-8010 | 10MM | 24MM | 32MM | 190MM | 1.6 | M8X1 |
| C6L6-8012 | 12MM | 24MM | 32MM | 190MM | 1.6 | M8X1 |
| C6L6-8014 | 14MM | 27MM | 34MM | 190MM | 1.8 | M10X1 |
| C6L6-8016 | 16MM | 27MM | 34MM | 190MM | 1.8 | M12X1 |
| C6L6-8020 | 20MM | 33MM | 42MM | 190MM | 2.1 | M16X1 |
| C6L6-8025 | 25MM | 44MM | 53MM | 190MM | 2.1 | M16X1 |
| C6L6-8032 | 32MM | 44MM | 53MM | 190MM | 2.1 | M16X1 |

- Max T.I.R. of .0002"
- Balanced at 25,000 RPM @ G2.5
- Adjustable Balance Screws



Standard

| Part Number | D1 | D2 | D3 | L1 | L2 | T |
|-------------|-------|------|------|------|-----|-------|
| B2L3-0125 | 0.125 | 0.39 | - | 3.15 | - | - |
| B2L3-0187 | 0.187 | 0.39 | - | 3.15 | - | - |
| B2L3-0250 | 0.250 | 0.83 | 1.06 | 3.15 | 1.4 | M5X1 |
| B2L3-0312 | 0.312 | 0.83 | 1.06 | 3.15 | 1.4 | M6X1 |
| B2L3-0375 | 0.375 | 0.94 | 1.26 | 3.15 | 1.6 | M8X1 |
| B2L3-0437 | 0.437 | 0.94 | 1.26 | 3.15 | 1.6 | M8X1 |
| B2L3-0500 | 0.500 | 0.94 | 1.26 | 3.15 | 1.8 | M10X1 |
| B2L3-0625 | 0.625 | 1.06 | 1.34 | 3.15 | 1.8 | M12X1 |
| B2L3-0750 | 0.750 | 1.30 | 1.65 | 3.93 | 2.1 | M16X1 |

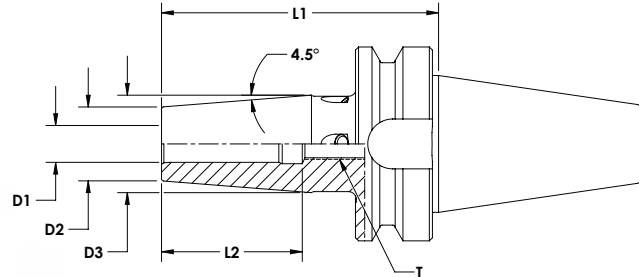
Metric

| Part Number | D1 | D2 | D3 | L1 | L2 | T |
|-------------|------|------|------|------|-----|-------|
| B2L3-8003 | 3MM | 10MM | - | 80MM | - | - |
| B2L3-8004 | 4MM | 10MM | - | 80MM | - | - |
| B2L3-8005 | 5MM | 10MM | - | 80MM | - | - |
| B2L3-8006 | 6MM | 21MM | 27MM | 80MM | 1.4 | M5X1 |
| B2L3-8008 | 8MM | 21MM | 27MM | 80MM | 1.4 | M6X1 |
| B2L3-8010 | 10MM | 24MM | 32MM | 80MM | 1.6 | M8X1 |
| B2L3-8012 | 12MM | 24MM | 32MM | 80MM | 1.6 | M8X1 |
| B2L3-8014 | 14MM | 27MM | 34MM | 80MM | 1.8 | M10X1 |
| B2L3-8016 | 16MM | 27MM | 34MM | 80MM | 1.8 | M12X1 |
| B2L3-8020 | 20MM | 33MM | 42MM | 90MM | 2.1 | M16X1 |

Stub Gage Length



- Max T.I.R. of .0002"
- Balanced at 25,000 RPM @ G2.5
- Adjustable Balance Screws



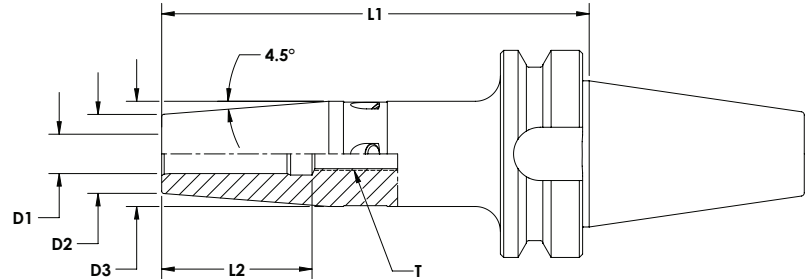
Standard

| Part Number | D1 | D2 | D3 | L1 | L2 | T |
|-------------|-------|------|------|------|-----|-------|
| B4L3-0125 | 0.125 | 0.39 | - | 3.54 | - | - |
| B4L3-0187 | 0.187 | 0.39 | - | 3.54 | - | - |
| B4L3-0250 | 0.250 | 0.83 | 1.06 | 3.54 | 1.4 | M5X1 |
| B4L3-0312 | 0.312 | 0.83 | 1.06 | 3.54 | 1.4 | M6X1 |
| B4L3-0375 | 0.375 | 0.94 | 1.26 | 3.54 | 1.6 | M8X1 |
| B4L3-0437 | 0.437 | 0.94 | 1.26 | 3.54 | 1.6 | M8X1 |
| B4L3-0500 | 0.500 | 0.94 | 1.26 | 3.54 | 1.8 | M10X1 |
| B4L3-0625 | 0.625 | 1.06 | 1.34 | 3.54 | 1.8 | M12X1 |
| B4L3-0750 | 0.750 | 1.30 | 1.65 | 3.54 | 2.1 | M16X1 |
| B4L3-0875 | 0.875 | 1.30 | 1.65 | 3.54 | 2.1 | M16X1 |
| B4L3-1000 | 1.000 | 1.73 | 2.09 | 3.93 | 2.1 | M16X1 |
| B4L3-1250 | 1.250 | 1.73 | 2.09 | 3.93 | 2.1 | M16X1 |

Metric

| Part Number | D1 | D2 | D3 | L1 | L2 | T |
|-------------|------|------|------|-------|-----|-------|
| B4L3-9003 | 3MM | 10MM | - | 90MM | - | - |
| B4L3-9004 | 4MM | 10MM | - | 90MM | - | - |
| B4L3-9005 | 5MM | 10MM | - | 90MM | - | - |
| B4L3-9006 | 6MM | 21MM | 27MM | 90MM | 1.4 | M5X1 |
| B4L3-9008 | 8MM | 21MM | 27MM | 90MM | 1.4 | M6X1 |
| B4L3-9010 | 10MM | 24MM | 32MM | 90MM | 1.6 | M8X1 |
| B4L3-9012 | 12MM | 24MM | 32MM | 90MM | 1.6 | M8X1 |
| B4L3-9014 | 14MM | 27MM | 34MM | 90MM | 1.8 | M10X1 |
| B4L3-9016 | 16MM | 27MM | 34MM | 90MM | 1.8 | M12X1 |
| B4L3-9020 | 20MM | 33MM | 42MM | 90MM | 2.1 | M16X1 |
| B4L3-9025 | 25MM | 44MM | 53MM | 100MM | 2.1 | M16X1 |
| B4L3-9032 | 32MM | 44MM | 53MM | 100MM | 2.1 | M16X1 |

- Max T.I.R. of .0002"
- Balanced at 25,000 RPM @ G2.5
- Adjustable Balance Screws



Standard

| Part Number | D1 | D2 | D3 | L1 | L2 | T |
|-------------|-------|------|------|------|-----|-------|
| B4L4-0250 | 0.250 | 0.83 | 1.06 | 5.12 | 1.4 | M5X1 |
| B4L4-0312 | 0.312 | 0.83 | 1.06 | 5.12 | 1.4 | M6X1 |
| B4L4-0375 | 0.375 | 0.94 | 1.26 | 5.12 | 1.6 | M8X1 |
| B4L4-0437 | 0.437 | 0.94 | 1.26 | 5.12 | 1.6 | M8X1 |
| B4L4-0500 | 0.500 | 0.94 | 1.26 | 5.12 | 1.8 | M10X1 |
| B4L4-0625 | 0.625 | 1.06 | 1.34 | 5.12 | 1.8 | M12X1 |
| B4L4-0750 | 0.750 | 1.30 | 1.65 | 5.12 | 2.1 | M16X1 |
| B4L4-0875 | 0.875 | 1.30 | 1.65 | 5.12 | 2.1 | M16X1 |
| B4L4-1000 | 1.000 | 1.73 | 2.09 | 5.12 | 2.1 | M16X1 |
| B4L4-1250 | 1.250 | 1.73 | 2.09 | 5.12 | 2.1 | M16X1 |

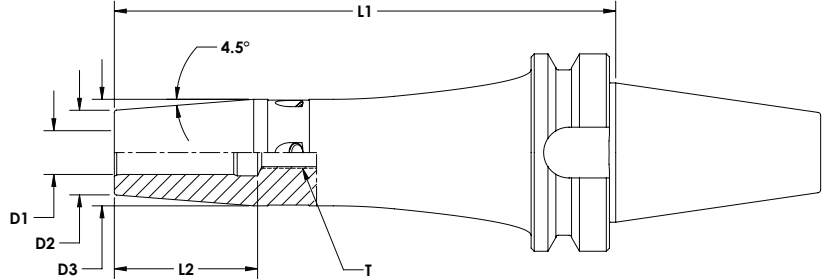
Metric

| Part Number | D1 | D2 | D3 | L1 | L2 | T |
|-------------|------|------|------|-------|-----|-------|
| B4L4-8006 | 6MM | 21MM | 27MM | 130MM | 1.4 | M5X1 |
| B4L4-8008 | 8MM | 21MM | 27MM | 130MM | 1.4 | M6X1 |
| B4L4-8010 | 10MM | 24MM | 32MM | 130MM | 1.6 | M8X1 |
| B4L4-8012 | 12MM | 24MM | 32MM | 130MM | 1.6 | M8X1 |
| B4L4-8014 | 14MM | 27MM | 34MM | 130MM | 1.8 | M10X1 |
| B4L4-8016 | 16MM | 27MM | 34MM | 130MM | 1.8 | M12X1 |
| B4L4-8020 | 20MM | 33MM | 42MM | 130MM | 2.1 | M16X1 |
| B4L4-8025 | 25MM | 44MM | 53MM | 130MM | 2.1 | M16X1 |
| B4L4-8032 | 32MM | 44MM | 53MM | 130MM | 2.1 | M16X1 |

Extended Gage Length



- Parabolic Profile to Maximize Rigidity
- Max T.I.R. of .0002"
- Balanced at 25,000 RPM @ G2.5
- Adjustable Balance Screws



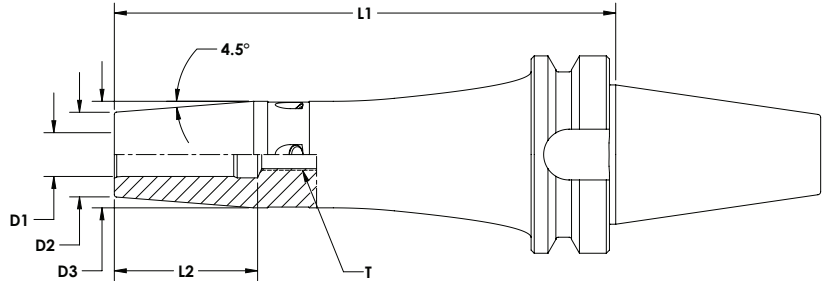
Standard

| Part Number | D1 | D2 | D3 | L1 | L2 | T |
|-------------|-------|------|------|------|-----|-------|
| B4L5-0250 | 0.250 | 0.83 | 1.06 | 6.30 | 1.4 | M5X1 |
| B4L5-0312 | 0.312 | 0.83 | 1.06 | 6.30 | 1.4 | M6X1 |
| B4L5-0375 | 0.375 | 0.94 | 1.26 | 6.30 | 1.6 | M8X1 |
| B4L5-0437 | 0.437 | 0.94 | 1.26 | 6.30 | 1.6 | M8X1 |
| B4L5-0500 | 0.500 | 0.94 | 1.26 | 6.30 | 1.8 | M10X1 |
| B4L5-0625 | 0.625 | 1.06 | 1.34 | 6.30 | 1.8 | M12X1 |
| B4L5-0750 | 0.750 | 1.30 | 1.65 | 6.30 | 2.1 | M16X1 |
| B4L5-0875 | 0.875 | 1.30 | 1.65 | 6.30 | 2.1 | M16X1 |
| B4L5-1000 | 1.000 | 1.73 | 2.09 | 6.30 | 2.1 | M16X1 |
| B4L5-1250 | 1.250 | 1.73 | 2.09 | 6.30 | 2.1 | M16X1 |

Metric

| Part Number | D1 | D2 | D3 | L1 | L2 | T |
|-------------|------|------|------|-------|-----|-------|
| B4L5-8006 | 6MM | 21MM | 27MM | 160MM | 1.4 | M5X1 |
| B4L5-8008 | 8MM | 21MM | 27MM | 160MM | 1.4 | M6X1 |
| B4L5-8010 | 10MM | 24MM | 32MM | 160MM | 1.6 | M8X1 |
| B4L5-8012 | 12MM | 24MM | 32MM | 160MM | 1.6 | M8X1 |
| B4L5-8014 | 14MM | 27MM | 34MM | 160MM | 1.8 | M10X1 |
| B4L5-8016 | 16MM | 27MM | 34MM | 160MM | 1.8 | M12X1 |
| B4L5-8020 | 20MM | 33MM | 42MM | 160MM | 2.1 | M16X1 |
| B4L5-8025 | 25MM | 44MM | 53MM | 160MM | 2.1 | M16X1 |
| B4L5-8032 | 32MM | 44MM | 53MM | 160MM | 2.1 | M16X1 |

- Parabolic Profile to Maximize Rigidity
- Max T.I.R. of .0002"
- Balanced at 25,000 RPM @ G2.5
- Adjustable Balance Screws



Standard

| Part Number | D1 | D2 | D3 | L1 | L2 | T |
|-------------|-------|------|------|------|-----|-------|
| B4L6-0250 | 0.250 | 0.83 | 1.06 | 7.48 | 1.4 | M5X1 |
| B4L6-0312 | 0.312 | 0.83 | 1.06 | 7.48 | 1.4 | M6X1 |
| B4L6-0375 | 0.375 | 0.94 | 1.26 | 7.48 | 1.6 | M8X1 |
| B4L6-0437 | 0.437 | 0.94 | 1.26 | 7.48 | 1.6 | M8X1 |
| B4L6-0500 | 0.500 | 0.94 | 1.26 | 7.48 | 1.8 | M10X1 |
| B4L6-0625 | 0.625 | 1.06 | 1.34 | 7.48 | 1.8 | M12X1 |
| B4L6-0750 | 0.750 | 1.30 | 1.65 | 7.48 | 2.1 | M16X1 |
| B4L6-0875 | 0.875 | 1.30 | 1.65 | 7.48 | 2.1 | M16X1 |
| B4L6-1000 | 1.000 | 1.73 | 2.09 | 7.48 | 2.1 | M16X1 |
| B4L6-1250 | 1.250 | 1.73 | 2.09 | 7.48 | 2.1 | M16X1 |

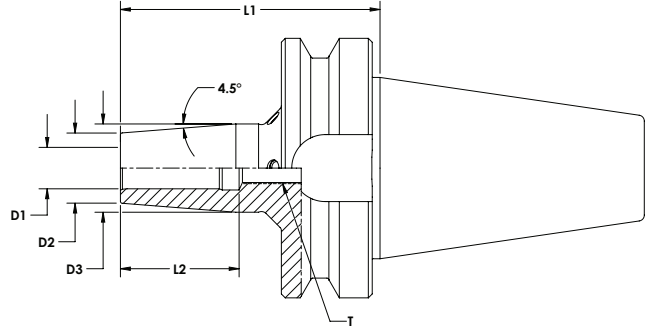
Metric

| Part Number | D1 | D2 | D3 | L1 | L2 | T |
|-------------|------|------|------|-------|-----|-------|
| B4L6-8006 | 6MM | 21MM | 27MM | 190MM | 1.4 | M5X1 |
| B4L6-8008 | 8MM | 21MM | 27MM | 190MM | 1.4 | M6X1 |
| B4L6-8010 | 10MM | 24MM | 32MM | 190MM | 1.6 | M8X1 |
| B4L6-8012 | 12MM | 24MM | 32MM | 190MM | 1.6 | M8X1 |
| B4L6-8014 | 14MM | 27MM | 34MM | 190MM | 1.8 | M10X1 |
| B4L6-8016 | 16MM | 27MM | 34MM | 190MM | 1.8 | M12X1 |
| B4L6-8020 | 20MM | 33MM | 42MM | 190MM | 2.1 | M16X1 |
| B4L6-8025 | 25MM | 44MM | 53MM | 190MM | 2.1 | M16X1 |
| B4L6-8032 | 32MM | 44MM | 53MM | 190MM | 2.1 | M16X1 |

Stub Gage Length



- Max T.I.R. of .0002"
- Balanced at 25,000 RPM @ G2.5
- Adjustable Balance Screws



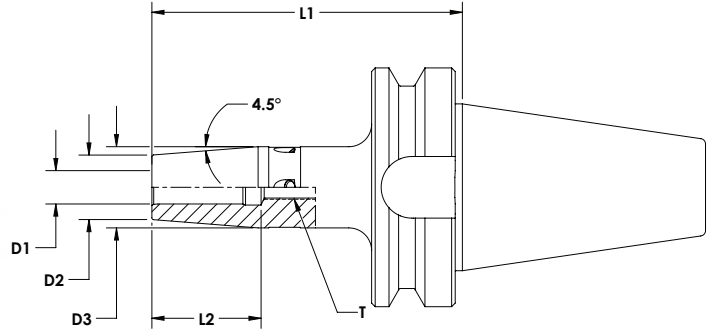
Standard

| Part Number | D1 | D2 | D3 | L1 | L2 | T |
|-------------|-------|------|------|------|-----|-------|
| B6L3-0250 | 0.250 | 0.83 | 1.06 | 3.93 | 1.4 | M5X1 |
| B6L3-0312 | 0.312 | 0.83 | 1.06 | 3.93 | 1.4 | M6X1 |
| B6L3-0375 | 0.375 | 0.94 | 1.26 | 3.93 | 1.6 | M8X1 |
| B6L3-0437 | 0.437 | 0.94 | 1.26 | 3.93 | 1.6 | M8X1 |
| B6L3-0500 | 0.500 | 0.94 | 1.26 | 3.93 | 1.8 | M10X1 |
| B6L3-0625 | 0.625 | 1.06 | 1.34 | 3.93 | 1.8 | M12X1 |
| B6L3-0750 | 0.750 | 1.30 | 1.65 | 3.93 | 2.1 | M16X1 |
| B6L3-0875 | 0.875 | 1.30 | 1.65 | 3.93 | 2.1 | M16X1 |
| B6L3-1000 | 1.000 | 1.73 | 2.09 | 3.93 | 2.1 | M16X1 |
| B6L3-1250 | 1.250 | 1.73 | 2.09 | 3.93 | 2.1 | M16X1 |

Metric

| Part Number | D1 | D2 | D3 | L1 | L2 | T |
|-------------|------|------|------|-------|-----|-------|
| B6L3-8006 | 6MM | 21MM | 27MM | 100MM | 1.4 | M5X1 |
| B6L3-8008 | 8MM | 21MM | 27MM | 100MM | 1.4 | M6X1 |
| B6L3-8010 | 10MM | 24MM | 32MM | 100MM | 1.6 | M8X1 |
| B6L3-8012 | 12MM | 24MM | 32MM | 100MM | 1.6 | M8X1 |
| B6L3-8014 | 14MM | 27MM | 34MM | 100MM | 1.8 | M10X1 |
| B6L3-8016 | 16MM | 27MM | 34MM | 100MM | 1.8 | M12X1 |
| B6L3-8020 | 20MM | 33MM | 42MM | 100MM | 2.1 | M16X1 |
| B6L3-8025 | 25MM | 44MM | 53MM | 100MM | 2.1 | M16X1 |
| B6L3-8032 | 32MM | 44MM | 53MM | 100MM | 2.1 | M16X1 |

- Max T.I.R. of .0002"
- Balanced at 25,000 RPM @ G2.5
- Adjustable Balance Screws



Standard

| Part Number | D1 | D2 | D3 | L1 | L2 | T |
|-------------|-------|------|------|------|-----|-------|
| B6L4-0250 | 0.250 | 0.83 | 1.06 | 5.12 | 1.4 | M5X1 |
| B6L4-0312 | 0.312 | 0.83 | 1.06 | 5.12 | 1.4 | M6X1 |
| B6L4-0375 | 0.375 | 0.94 | 1.26 | 5.12 | 1.6 | M8X1 |
| B6L4-0437 | 0.437 | 0.94 | 1.26 | 5.12 | 1.6 | M8X1 |
| B6L4-0500 | 0.500 | 0.94 | 1.26 | 5.12 | 1.8 | M10X1 |
| B6L4-0625 | 0.625 | 1.06 | 1.34 | 5.12 | 1.8 | M12X1 |
| B6L4-0750 | 0.750 | 1.30 | 1.65 | 5.12 | 2.1 | M16X1 |
| B6L4-0875 | 0.875 | 1.30 | 1.65 | 5.12 | 2.1 | M16X1 |
| B6L4-1000 | 1.000 | 1.73 | 2.09 | 5.12 | 2.1 | M16X1 |
| B6L4-1250 | 1.250 | 1.73 | 2.09 | 5.12 | 2.1 | M16X1 |

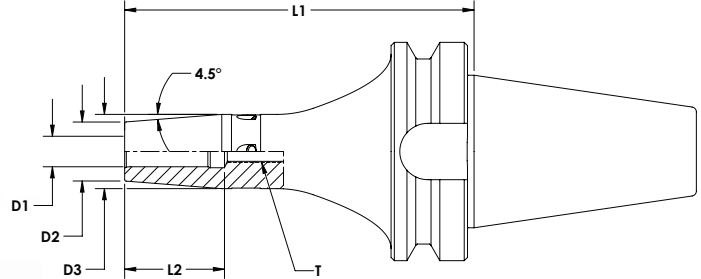
Metric

| Part Number | D1 | D2 | D3 | L1 | L2 | T |
|-------------|------|------|------|-------|-----|-------|
| B6L4-8006 | 6MM | 21MM | 27MM | 130MM | 1.4 | M5X1 |
| B6L4-8008 | 8MM | 21MM | 27MM | 130MM | 1.4 | M6X1 |
| B6L4-8010 | 10MM | 24MM | 32MM | 130MM | 1.6 | M8X1 |
| B6L4-8012 | 12MM | 24MM | 32MM | 130MM | 1.6 | M8X1 |
| B6L4-8014 | 14MM | 27MM | 34MM | 130MM | 1.8 | M10X1 |
| B6L4-8016 | 16MM | 27MM | 34MM | 130MM | 1.8 | M12X1 |
| B6L4-8020 | 20MM | 33MM | 42MM | 130MM | 2.1 | M16X1 |
| B6L4-8025 | 25MM | 44MM | 53MM | 130MM | 2.1 | M16X1 |
| B6L4-8032 | 32MM | 44MM | 53MM | 130MM | 2.1 | M16X1 |

Extended Gage Length



- Parabolic Profile to Maximize Rigidity
- Max T.I.R. of .0002"
- Balanced at 25,000 RPM @ G2.5
- Adjustable Balance Screws



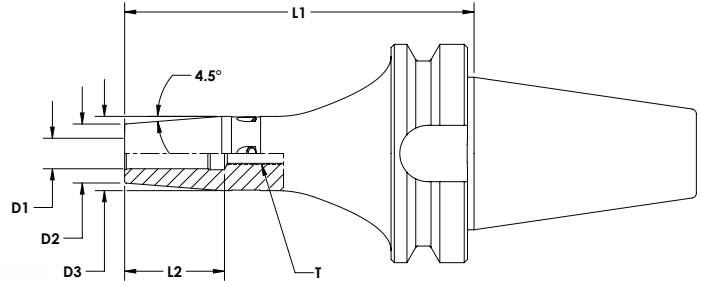
Standard

| Part Number | D1 | D2 | D3 | L1 | L2 | T |
|-------------|-------|------|------|------|-----|-------|
| B6L5-0250 | 0.250 | 0.83 | 1.06 | 6.30 | 1.4 | M5X1 |
| B6L5-0312 | 0.312 | 0.83 | 1.06 | 6.30 | 1.4 | M6X1 |
| B6L5-0375 | 0.375 | 0.94 | 1.26 | 6.30 | 1.6 | M8X1 |
| B6L5-0437 | 0.437 | 0.94 | 1.26 | 6.30 | 1.6 | M8X1 |
| B6L5-0500 | 0.500 | 0.94 | 1.26 | 6.30 | 1.8 | M10X1 |
| B6L5-0625 | 0.625 | 1.06 | 1.34 | 6.30 | 1.8 | M12X1 |
| B6L5-0750 | 0.750 | 1.30 | 1.65 | 6.30 | 2.1 | M16X1 |
| B6L5-0875 | 0.875 | 1.30 | 1.65 | 6.30 | 2.1 | M16X1 |
| B6L5-1000 | 1.000 | 1.73 | 2.09 | 6.30 | 2.1 | M16X1 |
| B6L5-1250 | 1.250 | 1.73 | 2.09 | 6.30 | 2.1 | M16X1 |

Metric

| Part Number | D1 | D2 | D3 | L1 | L2 | T |
|-------------|------|------|------|-------|-----|-------|
| B6L5-8006 | 6MM | 21MM | 27MM | 160MM | 1.4 | M5X1 |
| B6L5-8008 | 8MM | 21MM | 27MM | 160MM | 1.4 | M6X1 |
| B6L5-8010 | 10MM | 24MM | 32MM | 160MM | 1.6 | M8X1 |
| B6L5-8012 | 12MM | 24MM | 32MM | 160MM | 1.6 | M8X1 |
| B6L5-8014 | 14MM | 27MM | 34MM | 160MM | 1.8 | M10X1 |
| B6L5-8016 | 16MM | 27MM | 34MM | 160MM | 1.8 | M12X1 |
| B6L5-8020 | 20MM | 33MM | 42MM | 160MM | 2.1 | M16X1 |
| B6L5-8025 | 25MM | 44MM | 53MM | 160MM | 2.1 | M16X1 |
| B6L5-8032 | 32MM | 44MM | 53MM | 160MM | 2.1 | M16X1 |

- Parabolic Profile to Maximize Rigidity
- Max T.I.R. of .0002"
- Balanced at 25,000 RPM @ G2.5
- Adjustable Balance Screws



Standard

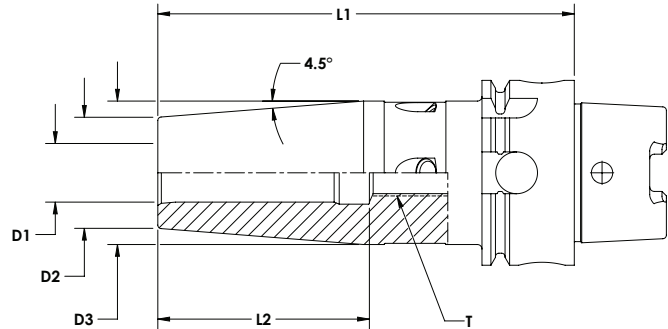
| Part Number | D1 | D2 | D3 | L1 | L2 | T |
|-------------|-------|------|------|------|-----|-------|
| B6L6-0250 | 0.250 | 0.83 | 1.06 | 7.48 | 1.4 | M5X1 |
| B6L6-0312 | 0.312 | 0.83 | 1.06 | 7.48 | 1.4 | M6X1 |
| B6L6-0375 | 0.375 | 0.94 | 1.26 | 7.48 | 1.6 | M8X1 |
| B6L6-0437 | 0.437 | 0.94 | 1.26 | 7.48 | 1.6 | M8X1 |
| B6L6-0500 | 0.500 | 0.94 | 1.26 | 7.48 | 1.8 | M10X1 |
| B6L6-0625 | 0.625 | 1.06 | 1.34 | 7.48 | 1.8 | M12X1 |
| B6L6-0750 | 0.750 | 1.30 | 1.65 | 7.48 | 2.1 | M16X1 |
| B6L6-0875 | 0.875 | 1.30 | 1.65 | 7.48 | 2.1 | M16X1 |
| B6L6-1000 | 1.000 | 1.73 | 2.09 | 7.48 | 2.1 | M16X1 |
| B6L6-1250 | 1.250 | 1.73 | 2.09 | 7.48 | 2.1 | M16X1 |

Metric

| Part Number | D1 | D2 | D3 | L1 | L2 | T |
|-------------|------|------|------|-------|-----|-------|
| B6L6-8006 | 6MM | 21MM | 27MM | 190MM | 1.4 | M5X1 |
| B6L6-8008 | 8MM | 21MM | 27MM | 190MM | 1.4 | M6X1 |
| B6L6-8010 | 10MM | 24MM | 32MM | 190MM | 1.6 | M8X1 |
| B6L6-8012 | 12MM | 24MM | 32MM | 190MM | 1.6 | M8X1 |
| B6L6-8014 | 14MM | 27MM | 34MM | 190MM | 1.8 | M10X1 |
| B6L6-8016 | 16MM | 27MM | 34MM | 190MM | 1.8 | M12X1 |
| B6L6-8020 | 20MM | 33MM | 42MM | 190MM | 2.1 | M16X1 |
| B6L6-8025 | 25MM | 44MM | 53MM | 190MM | 2.1 | M16X1 |
| B6L6-8032 | 32MM | 44MM | 53MM | 190MM | 2.1 | M16X1 |

Stub Gage Length

- Max T.I.R. of .0002"
- Balanced at 25,000 RPM @ G2.5
- Adjustable Balance Screws



Standard

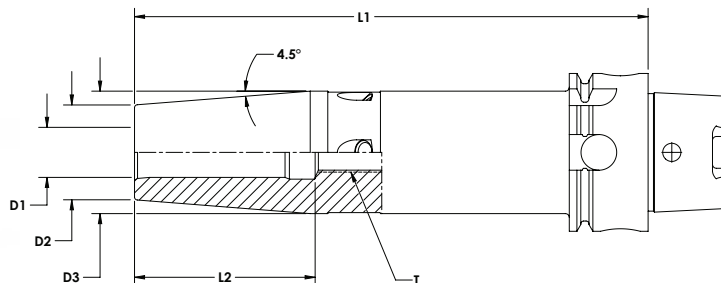
| Part Number | D1 | D2 | D3 | L1 | L2 | T |
|-------------|-------|------|------|------|-----|-------|
| H2L3A0125 | 0.125 | 0.39 | - | 2.36 | - | - |
| H2L3A0187 | 0.187 | 0.39 | - | 2.36 | - | - |
| H2L3A0250 | 0.250 | 0.83 | 1.06 | 3.15 | 1.4 | M5X1 |
| H2L3A0312 | 0.312 | 0.83 | 1.06 | 3.15 | 1.4 | M6X1 |
| H2L3A0375 | 0.375 | 0.94 | 1.26 | 3.15 | 1.6 | M8X1 |
| H2L3A0437 | 0.437 | 0.94 | 1.26 | 3.15 | 1.6 | M8X1 |
| H2L3A0500 | 0.500 | 0.94 | 1.26 | 3.54 | 1.8 | M10X1 |
| H2L3A0625 | 0.625 | 1.06 | 1.34 | 3.54 | 1.8 | M12X1 |

Metric

| Part Number | D1 | D2 | D3 | L1 | L2 | T |
|-------------|------|------|------|------|-----|-------|
| H2L3A8003 | 3MM | 10MM | - | 60MM | - | - |
| H2L3A8004 | 4MM | 10MM | - | 60MM | - | - |
| H2L3A8005 | 5MM | 10MM | - | 60MM | - | - |
| H2L3A8006 | 6MM | 21MM | 27MM | 80MM | 1.4 | M5X1 |
| H2L3A8008 | 8MM | 21MM | 27MM | 80MM | 1.4 | M6X1 |
| H2L3A8010 | 10MM | 24MM | 32MM | 80MM | 1.6 | M8X1 |
| H2L3A8012 | 12MM | 24MM | 32MM | 90MM | 1.6 | M8X1 |
| H2L3A8014 | 14MM | 27MM | 34MM | 90MM | 1.8 | M10X1 |
| H2L3A8016 | 16MM | 27MM | 34MM | 90MM | 1.8 | M12X1 |



- Max T.I.R. of .0002"
- Balanced at 25,000 RPM @ G2.5
- Adjustable Balance Screws



Standard

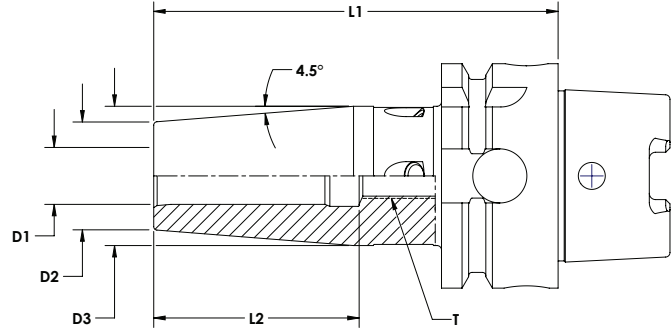
| Part Number | D1 | D2 | D3 | L1 | L2 | T |
|-------------|-------|------|------|------|-----|-------|
| H2L4A0250 | 0.250 | 0.83 | 1.06 | 5.12 | 1.4 | M5X1 |
| H2L4A0312 | 0.312 | 0.83 | 1.06 | 5.12 | 1.4 | M6X1 |
| H2L4A0375 | 0.375 | 0.94 | 1.26 | 5.12 | 1.6 | M8X1 |
| H2L4A0437 | 0.437 | 0.94 | 1.26 | 5.12 | 1.6 | M8X1 |
| H2L4A0500 | 0.500 | 0.94 | 1.26 | 5.12 | 1.8 | M10X1 |
| H2L4A0625 | 0.625 | 1.06 | 1.34 | 5.12 | 1.8 | M12X1 |

Metric

| Part Number | D1 | D2 | D3 | L1 | L2 | T |
|-------------|------|------|------|-------|-----|-------|
| H2L4A8006 | 6MM | 21MM | 27MM | 130MM | 1.4 | M5X1 |
| H2L4A8008 | 8MM | 21MM | 27MM | 130MM | 1.4 | M6X1 |
| H2L4A8010 | 10MM | 24MM | 32MM | 130MM | 1.6 | M8X1 |
| H2L4A8012 | 12MM | 24MM | 32MM | 130MM | 1.6 | M8X1 |
| H2L4A8014 | 14MM | 27MM | 34MM | 130MM | 1.8 | M10X1 |
| H2L4A8016 | 16MM | 27MM | 34MM | 130MM | 1.8 | M12X1 |

Stub Gage Length

- Max T.I.R. of .0002"
- Balanced at 25,000 RPM @ G2.5
- Adjustable Balance Screws



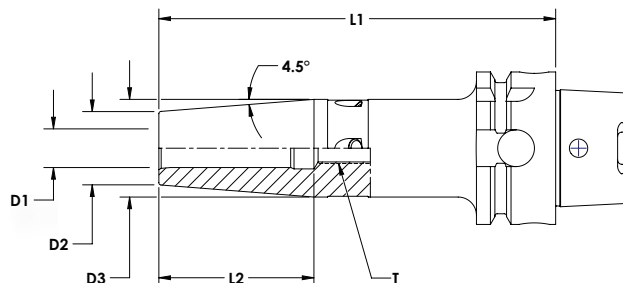
Standard

| Part Number | D1 | D2 | D3 | L1 | L2 | T |
|-------------|-------|------|------|------|-----|-------|
| H3L3A0125 | 0.125 | 0.39 | - | 2.36 | - | - |
| H3L3A0187 | 0.187 | 0.39 | - | 2.36 | - | - |
| H3L3A0250 | 0.250 | 0.83 | 1.06 | 3.15 | 1.4 | M5X1 |
| H3L3A0312 | 0.312 | 0.83 | 1.06 | 3.15 | 1.4 | M6X1 |
| H3L3A0375 | 0.375 | 0.94 | 1.26 | 3.15 | 1.6 | M8X1 |
| H3L3A0437 | 0.437 | 0.94 | 1.26 | 3.35 | 1.6 | M8X1 |
| H3L3A0500 | 0.500 | 0.94 | 1.26 | 3.54 | 1.8 | M10X1 |
| H3L3A0625 | 0.625 | 1.06 | 1.34 | 3.74 | 1.8 | M12X1 |

Metric

| Part Number | D1 | D2 | D3 | L1 | L2 | T |
|-------------|------|------|------|------|-----|-------|
| H3L3A8003 | 3MM | 10MM | - | 60MM | - | - |
| H3L3A8004 | 4MM | 10MM | - | 60MM | - | - |
| H3L3A8005 | 5MM | 10MM | - | 60MM | - | - |
| H3L3A8006 | 6MM | 21MM | 27MM | 80MM | 1.4 | M5X1 |
| H3L3A8008 | 8MM | 21MM | 27MM | 80MM | 1.4 | M6X1 |
| H3L3A8010 | 10MM | 24MM | 32MM | 85MM | 1.6 | M8X1 |
| H3L3A8012 | 12MM | 24MM | 32MM | 90MM | 1.6 | M8X1 |
| H3L3A8014 | 14MM | 27MM | 34MM | 90MM | 1.8 | M10X1 |
| H3L3A8016 | 16MM | 27MM | 34MM | 95MM | 1.8 | M12X1 |

- Max T.I.R. of .0002"
- Balanced at 25,000 RPM @ G2.5
- Adjustable Balance Screws



Standard

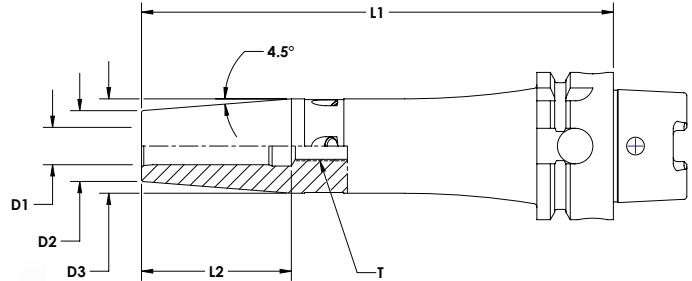
| Part Number | D1 | D2 | D3 | L1 | L2 | T |
|-------------|-------|------|------|------|-----|-------|
| H3L4A0250 | 0.250 | 0.83 | 1.06 | 5.12 | 1.4 | M5X1 |
| H3L4A0312 | 0.312 | 0.83 | 1.06 | 5.12 | 1.4 | M6X1 |
| H3L4A0375 | 0.375 | 0.94 | 1.26 | 5.12 | 1.6 | M8X1 |
| H3L4A0437 | 0.437 | 0.94 | 1.26 | 5.12 | 1.6 | M8X1 |
| H3L4A0500 | 0.500 | 0.94 | 1.26 | 5.12 | 1.8 | M10X1 |
| H3L4A0625 | 0.625 | 1.06 | 1.34 | 5.12 | 1.8 | M12X1 |

Metric

| Part Number | D1 | D2 | D3 | L1 | L2 | T |
|-------------|------|------|------|-------|-----|-------|
| H3L4A8006 | 6MM | 21MM | 27MM | 130MM | 1.4 | M5X1 |
| H3L4A8008 | 8MM | 21MM | 27MM | 130MM | 1.4 | M6X1 |
| H3L4A8010 | 10MM | 24MM | 32MM | 130MM | 1.6 | M8X1 |
| H3L4A8012 | 12MM | 24MM | 32MM | 130MM | 1.6 | M8X1 |
| H3L4A8014 | 14MM | 27MM | 34MM | 130MM | 1.8 | M10X1 |
| H3L4A8016 | 16MM | 27MM | 34MM | 130MM | 1.8 | M12X1 |

Extended Gage Length

- Parabolic Profile to Maximize Rigidity
- Max T.I.R. of .0002"
- Balanced at 25,000 RPM @ G2.5
- Adjustable Balance Screws



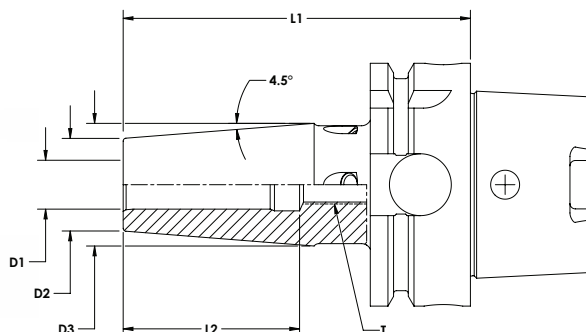
Standard

| Part Number | D1 | D2 | D3 | L1 | L2 | T |
|-------------|-------|------|------|------|-----|-------|
| H3L5A0250 | 0.250 | 0.83 | 1.06 | 6.30 | 1.4 | M5X1 |
| H3L5A0312 | 0.312 | 0.83 | 1.06 | 6.30 | 1.4 | M6X1 |
| H3L5A0375 | 0.375 | 0.94 | 1.26 | 6.30 | 1.6 | M8X1 |
| H3L5A0437 | 0.437 | 0.94 | 1.26 | 6.30 | 1.6 | M8X1 |
| H3L5A0500 | 0.500 | 0.94 | 1.26 | 6.30 | 1.8 | M10X1 |
| H3L5A0625 | 0.625 | 1.06 | 1.34 | 6.30 | 1.8 | M12X1 |

Metric

| Part Number | D1 | D2 | D3 | L1 | L2 | T |
|-------------|------|------|------|-------|-----|-------|
| H3L5A8006 | 6MM | 21MM | 27MM | 160MM | 1.4 | M5X1 |
| H3L5A8008 | 8MM | 21MM | 27MM | 160MM | 1.4 | M6X1 |
| H3L5A8010 | 10MM | 24MM | 32MM | 160MM | 1.6 | M8X1 |
| H3L5A8012 | 12MM | 24MM | 32MM | 160MM | 1.6 | M8X1 |
| H3L5A8014 | 14MM | 27MM | 34MM | 160MM | 1.8 | M10X1 |
| H3L5A8016 | 16MM | 27MM | 34MM | 160MM | 1.8 | M12X1 |

- Max T.I.R. of .0002"
- Balanced at 25,000 RPM @ G2.5
- Adjustable Balance Screws



Standard

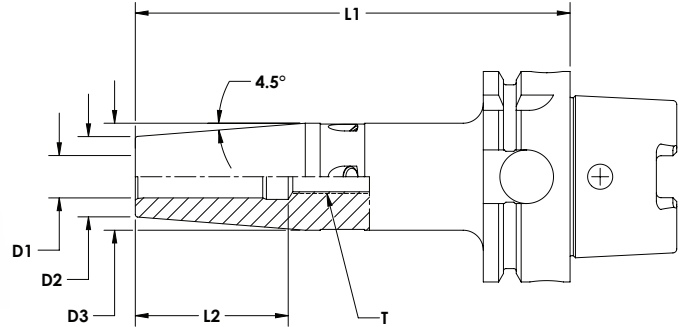
| Part Number | D1 | D2 | D3 | L1 | L2 | T |
|-------------|-------|------|------|------|-----|-------|
| H4L3A0125 | 0.125 | 0.39 | - | 3.15 | - | - |
| H4L3A0187 | 0.187 | 0.39 | - | 3.15 | - | - |
| H4L3A0250 | 0.250 | 0.83 | 1.06 | 3.15 | 1.4 | M5X1 |
| H4L3A0312 | 0.312 | 0.83 | 1.06 | 3.15 | 1.4 | M6X1 |
| H4L3A0375 | 0.375 | 0.94 | 1.26 | 3.35 | 1.6 | M8X1 |
| H4L3A0437 | 0.437 | 0.94 | 1.26 | 3.35 | 1.6 | M8X1 |
| H4L3A0500 | 0.500 | 0.94 | 1.26 | 3.54 | 1.8 | M10X1 |
| H4L3A0625 | 0.625 | 1.06 | 1.34 | 3.74 | 1.8 | M12X1 |
| H4L3A0750 | 0.750 | 1.30 | 1.65 | 3.93 | 2.1 | M16X1 |
| H4L3A1000 | 1.000 | 1.73 | 2.06 | 4.53 | 2.1 | M16X1 |
| H4L3A1250 | 1.250 | 1.73 | 2.06 | 4.72 | 2.1 | M16X1 |

Metric

| Part Number | D1 | D2 | D3 | L1 | L2 | T |
|-------------|------|------|------|-------|-----|-------|
| H4L3A8003 | 3MM | 10MM | - | 80MM | - | - |
| H4L3A8004 | 4MM | 10MM | - | 80MM | - | - |
| H4L3A8005 | 5MM | 10MM | - | 80MM | - | - |
| H4L3A8006 | 6MM | 21MM | 27MM | 80MM | 1.4 | M5X1 |
| H4L3A8008 | 8MM | 21MM | 27MM | 80MM | 1.4 | M6X1 |
| H4L3A8010 | 10MM | 24MM | 32MM | 85MM | 1.6 | M8X1 |
| H4L3A8012 | 12MM | 24MM | 32MM | 90MM | 1.6 | M8X1 |
| H4L3A8014 | 14MM | 27MM | 34MM | 90MM | 1.8 | M10X1 |
| H4L3A8016 | 16MM | 27MM | 34MM | 95MM | 1.8 | M12X1 |
| H4L3A8020 | 20MM | 33MM | 42MM | 100MM | 2.1 | M16X1 |
| H4L3A8025 | 25MM | 44MM | 2.06 | 115MM | 2.1 | M16X1 |
| H4L3A8032 | 32MM | 44MM | 2.06 | 120MM | 2.1 | M16X1 |

Standard Gage Length

- Max T.I.R. of .0002"
- Balanced at 25,000 RPM @ G2.5
- Adjustable Balance Screws



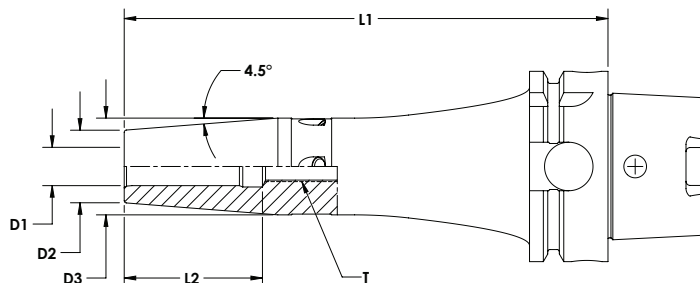
Standard

| Part Number | D1 | D2 | D3 | L1 | L2 | T |
|-------------|-------|------|------|------|-----|-------|
| H4L4A0250 | 0.250 | 0.83 | 1.06 | 5.12 | 1.4 | M5X1 |
| H4L4A0312 | 0.312 | 0.83 | 1.06 | 5.12 | 1.4 | M6X1 |
| H4L4A0375 | 0.375 | 0.94 | 1.26 | 5.12 | 1.6 | M8X1 |
| H4L4A0437 | 0.437 | 0.94 | 1.26 | 5.12 | 1.6 | M8X1 |
| H4L4A0500 | 0.500 | 0.94 | 1.26 | 5.12 | 1.8 | M10X1 |
| H4L4A0625 | 0.625 | 1.06 | 1.34 | 5.12 | 1.8 | M12X1 |
| H4L4A0750 | 0.750 | 1.30 | 1.65 | 5.12 | 2.1 | M16X1 |
| H4L4A0875 | 0.875 | 1.30 | 1.65 | 5.12 | 2.1 | M16X1 |

Metric

| Part Number | D1 | D2 | D3 | L1 | L2 | T |
|-------------|------|------|------|-------|-----|-------|
| H4L4A8006 | 6MM | 21MM | 27MM | 130MM | 1.4 | M5X1 |
| H4L4A8008 | 8MM | 21MM | 27MM | 130MM | 1.4 | M6X1 |
| H4L4A8010 | 10MM | 24MM | 32MM | 130MM | 1.6 | M8X1 |
| H4L4A8012 | 12MM | 24MM | 32MM | 130MM | 1.6 | M8X1 |
| H4L4A8014 | 14MM | 27MM | 34MM | 130MM | 1.8 | M10X1 |
| H4L4A8016 | 16MM | 27MM | 34MM | 130MM | 1.8 | M12X1 |
| H4L4A8020 | 20MM | 33MM | 42MM | 130MM | 2.1 | M16X1 |

- Parabolic Profile to Maximize Rigidity
- Max T.I.R. of .0002"
- Balanced at 25,000 RPM @ G2.5
- Adjustable Balance Screws



Standard

| Part Number | D1 | D2 | D3 | L1 | L2 | T |
|-------------|-------|------|------|------|-----|-------|
| H4L5A0250 | 0.250 | 0.83 | 1.06 | 6.30 | 1.4 | M5X1 |
| H4L5A0312 | 0.312 | 0.83 | 1.06 | 6.30 | 1.4 | M6X1 |
| H4L5A0375 | 0.375 | 0.94 | 1.26 | 6.30 | 1.6 | M8X1 |
| H4L5A0437 | 0.437 | 0.94 | 1.26 | 6.30 | 1.6 | M8X1 |
| H4L5A0500 | 0.500 | 0.94 | 1.26 | 6.30 | 1.8 | M10X1 |
| H4L5A0625 | 0.625 | 1.06 | 1.34 | 6.30 | 1.8 | M12X1 |
| H4L5A0750 | 0.750 | 1.30 | 1.65 | 6.30 | 2.1 | M16X1 |
| H4L5A0875 | 0.875 | 1.30 | 1.65 | 6.30 | 2.1 | M16X1 |
| H4L5A1000 | 1.000 | 1.73 | 2.09 | 6.30 | 2.1 | M16X1 |
| H4L5A1250 | 1.250 | 1.73 | 2.09 | 6.30 | 2.1 | M16X1 |

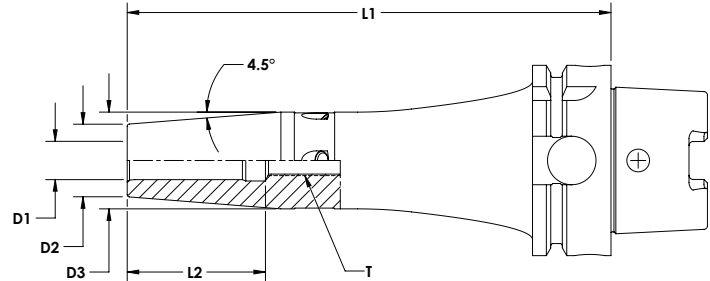
Metric

| Part Number | D1 | D2 | D3 | L1 | L2 | T |
|-------------|------|------|------|-------|-----|-------|
| H4L5A8006 | 6MM | 21MM | 27MM | 160MM | 1.4 | M5X1 |
| H4L5A8008 | 8MM | 21MM | 27MM | 160MM | 1.4 | M6X1 |
| H4L5A8010 | 10MM | 24MM | 32MM | 160MM | 1.6 | M8X1 |
| H4L5A8012 | 12MM | 24MM | 32MM | 160MM | 1.6 | M8X1 |
| H4L5A8014 | 14MM | 27MM | 34MM | 160MM | 1.8 | M10X1 |
| H4L5A8016 | 16MM | 27MM | 34MM | 160MM | 1.8 | M12X1 |
| H4L5A8020 | 20MM | 33MM | 42MM | 160MM | 2.1 | M16X1 |
| H4L5A8025 | 25MM | 44MM | 53MM | 160MM | 2.1 | M16X1 |
| H4L5A8032 | 32MM | 44MM | 53MM | 160MM | 2.1 | M16X1 |

Extra Extended Gage Length



- Parabolic Profile to Maximize Rigidity
- Max T.I.R. of .0002"
- Balanced at 25,000 RPM @ G2.5
- Adjustable Balance Screws



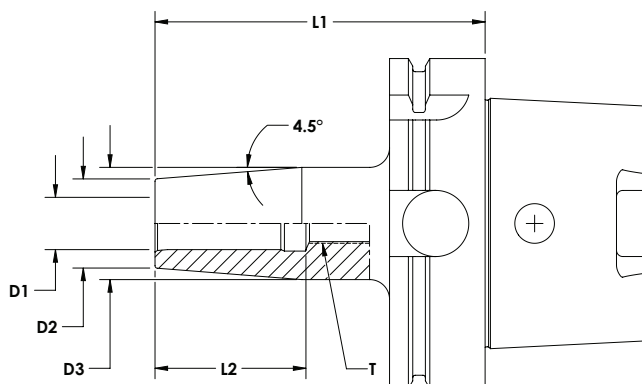
Standard

| Part Number | D1 | D2 | D3 | L1 | L2 | T |
|-------------|-------|------|------|------|-----|-------|
| H4L6A0250 | 0.250 | 0.83 | 1.06 | 7.48 | 1.4 | M5X1 |
| H4L6A0312 | 0.312 | 0.83 | 1.06 | 7.48 | 1.4 | M6X1 |
| H4L6A0375 | 0.375 | 0.94 | 1.26 | 7.48 | 1.6 | M8X1 |
| H4L6A0437 | 0.437 | 0.94 | 1.26 | 7.48 | 1.6 | M8X1 |
| H4L6A0500 | 0.500 | 0.94 | 1.26 | 7.48 | 1.8 | M10X1 |
| H4L6A0625 | 0.625 | 1.06 | 1.34 | 7.48 | 1.8 | M12X1 |
| H4L6A0750 | 0.750 | 1.30 | 1.65 | 7.48 | 2.1 | M16X1 |
| H4L6A0875 | 0.875 | 1.30 | 1.65 | 7.48 | 2.1 | M16X1 |
| H4L6A1000 | 1.000 | 1.73 | 2.09 | 7.48 | 2.1 | M16X1 |
| H4L6A1250 | 1.250 | 1.73 | 2.09 | 7.48 | 2.1 | M16X1 |

Metric

| Part Number | D1 | D2 | D3 | L1 | L2 | T |
|-------------|------|------|------|-------|-----|-------|
| H4L6A8006 | 6MM | 21MM | 27MM | 190MM | 1.4 | M5X1 |
| H4L6A8008 | 8MM | 21MM | 27MM | 190MM | 1.4 | M6X1 |
| H4L6A8010 | 10MM | 24MM | 32MM | 190MM | 1.6 | M8X1 |
| H4L6A8012 | 12MM | 24MM | 32MM | 190MM | 1.6 | M8X1 |
| H4L6A8014 | 14MM | 27MM | 34MM | 190MM | 1.8 | M10X1 |
| H4L6A8016 | 16MM | 27MM | 34MM | 190MM | 1.8 | M12X1 |
| H4L6A8020 | 20MM | 33MM | 42MM | 190MM | 2.1 | M16X1 |
| H4L6A8025 | 25MM | 44MM | 53MM | 190MM | 2.1 | M16X1 |
| H4L6A8032 | 32MM | 44MM | 53MM | 190MM | 2.1 | M16X1 |

- Max T.I.R. of .0002"
- Balanced at 25,000 RPM @ G2.5
- Adjustable Balance Screws



Standard

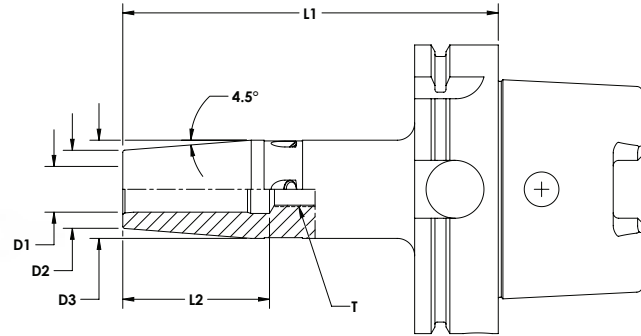
| Part Number | D1 | D2 | D3 | L1 | L2 | T |
|-------------|-------|------|------|------|-----|-------|
| H6L3A0250 | 0.250 | 0.83 | 1.06 | 3.35 | 1.4 | M5X1 |
| H6L3A0312 | 0.312 | 0.83 | 1.06 | 3.35 | 1.4 | M6X1 |
| H6L3A0375 | 0.375 | 0.94 | 1.26 | 3.54 | 1.6 | M8X1 |
| H6L3A0437 | 0.437 | 0.94 | 1.26 | 3.54 | 1.6 | M8X1 |
| H6L3A0500 | 0.500 | 0.94 | 1.26 | 3.74 | 1.8 | M10X1 |
| H6L3A0625 | 0.625 | 1.06 | 1.34 | 3.93 | 1.8 | M12X1 |
| H6L3A0750 | 0.750 | 1.30 | 1.65 | 4.13 | 2.1 | M16X1 |
| H6L3A0875 | 0.875 | 1.30 | 1.65 | 4.33 | 2.1 | M16X1 |
| H6L3A1000 | 1.000 | 1.73 | 2.09 | 4.52 | 2.1 | M16X1 |
| H6L3A1250 | 1.250 | 1.73 | 2.09 | 4.72 | 2.1 | M16X1 |

Metric

| Part Number | D1 | D2 | D3 | L1 | L2 | T |
|-------------|------|------|------|-------|-----|-------|
| H6L3A8006 | 6MM | 21MM | 27MM | 85MM | 1.4 | M5X1 |
| H6L3A8008 | 8MM | 21MM | 27MM | 85MM | 1.4 | M6X1 |
| H6L3A8010 | 10MM | 24MM | 32MM | 90MM | 1.6 | M8X1 |
| H6L3A8012 | 12MM | 24MM | 32MM | 95MM | 1.6 | M8X1 |
| H6L3A8014 | 14MM | 27MM | 34MM | 95MM | 1.8 | M10X1 |
| H6L3A8016 | 16MM | 27MM | 34MM | 100MM | 1.8 | M12X1 |
| H6L3A8020 | 20MM | 33MM | 42MM | 105MM | 2.1 | M16X1 |
| H6L3A8025 | 25MM | 44MM | 53MM | 115MM | 2.1 | M16X1 |
| H6L3A8032 | 32MM | 44MM | 53MM | 120MM | 2.1 | M16X1 |

Standard Gage Length

- Max T.I.R. of .0002"
- Balanced at 25,000 RPM @ G2.5
- Adjustable Balance Screws



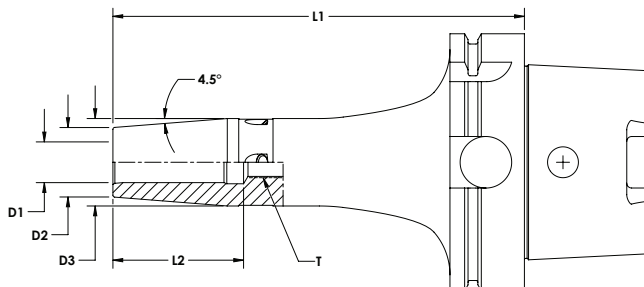
Standard

| Part Number | D1 | D2 | D3 | L1 | L2 | T |
|-------------|-------|------|------|------|-----|-------|
| H6L4A0250 | 0.250 | 0.83 | 1.06 | 5.12 | 1.4 | M5X1 |
| H6L4A0312 | 0.312 | 0.83 | 1.06 | 5.12 | 1.4 | M6X1 |
| H6L4A0375 | 0.375 | 0.94 | 1.26 | 5.12 | 1.6 | M8X1 |
| H6L4A0437 | 0.437 | 0.94 | 1.26 | 5.12 | 1.6 | M8X1 |
| H6L4A0500 | 0.500 | 0.94 | 1.26 | 5.12 | 1.8 | M10X1 |
| H6L4A0625 | 0.625 | 1.06 | 1.34 | 5.12 | 1.8 | M12X1 |
| H6L4A0750 | 0.750 | 1.30 | 1.65 | 5.12 | 2.1 | M16X1 |
| H6L4A0875 | 0.875 | 1.30 | 1.65 | 5.12 | 2.1 | M16X1 |

Metric

| Part Number | D1 | D2 | D3 | L1 | L2 | T |
|-------------|------|------|------|-------|-----|-------|
| H6L4A8006 | 6MM | 21MM | 27MM | 130MM | 1.4 | M5X1 |
| H6L4A8008 | 8MM | 21MM | 27MM | 130MM | 1.4 | M6X1 |
| H6L4A8010 | 10MM | 24MM | 32MM | 130MM | 1.6 | M8X1 |
| H6L4A8012 | 12MM | 24MM | 32MM | 130MM | 1.6 | M8X1 |
| H6L4A8014 | 14MM | 27MM | 34MM | 130MM | 1.8 | M10X1 |
| H6L4A8016 | 16MM | 27MM | 34MM | 130MM | 1.8 | M12X1 |
| H6L4A8020 | 20MM | 33MM | 42MM | 130MM | 2.1 | M16X1 |

- Parabolic Profile to Maximize Rigidity
- Max T.I.R. of .0002"
- Balanced at 25,000 RPM @ G2.5
- Adjustable Balance Screws



Standard

| Part Number | D1 | D2 | D3 | L1 | L2 | T |
|-------------|-------|------|------|------|-----|-------|
| H6L5A0250 | 0.250 | 0.83 | 1.06 | 6.30 | 1.4 | M5X1 |
| H6L5A0312 | 0.312 | 0.83 | 1.06 | 6.30 | 1.4 | M6X1 |
| H6L5A0375 | 0.375 | 0.94 | 1.26 | 6.30 | 1.6 | M8X1 |
| H6L5A0437 | 0.437 | 0.94 | 1.26 | 6.30 | 1.6 | M8X1 |
| H6L5A0500 | 0.500 | 0.94 | 1.26 | 6.30 | 1.8 | M10X1 |
| H6L5A0625 | 0.625 | 1.06 | 1.34 | 6.30 | 1.8 | M12X1 |
| H6L5A0750 | 0.750 | 1.30 | 1.65 | 6.30 | 2.1 | M16X1 |
| H6L5A0875 | 0.875 | 1.30 | 1.65 | 6.30 | 2.1 | M16X1 |
| H6L5A1000 | 1.000 | 1.73 | 2.09 | 6.30 | 2.1 | M16X1 |
| H6L5A1250 | 1.250 | 1.73 | 2.09 | 6.30 | 2.1 | M16X1 |

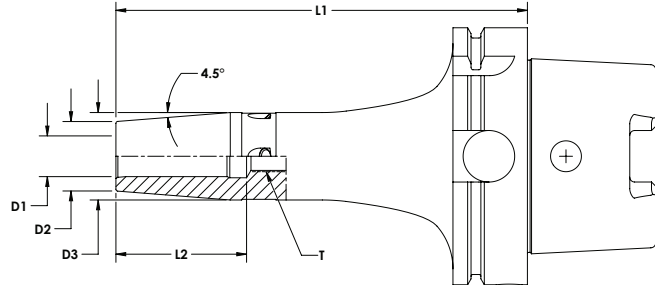
Metric

| Part Number | D1 | D2 | D3 | L1 | L2 | T |
|-------------|------|------|------|-------|-----|-------|
| H6L5A8006 | 6MM | 21MM | 27MM | 160MM | 1.4 | M5X1 |
| H6L5A8008 | 8MM | 21MM | 27MM | 160MM | 1.4 | M6X1 |
| H6L5A8010 | 10MM | 24MM | 32MM | 160MM | 1.6 | M8X1 |
| H6L5A8012 | 12MM | 24MM | 32MM | 160MM | 1.6 | M8X1 |
| H6L5A8014 | 14MM | 27MM | 34MM | 160MM | 1.8 | M10X1 |
| H6L5A8016 | 16MM | 27MM | 34MM | 160MM | 1.8 | M12X1 |
| H6L5A8020 | 20MM | 33MM | 42MM | 160MM | 2.1 | M16X1 |
| H6L5A8025 | 25MM | 44MM | 53MM | 160MM | 2.1 | M16X1 |
| H6L5A8032 | 32MM | 44MM | 53MM | 160MM | 2.1 | M16X1 |

Extra Extended Gage Length



- Parabolic Profile to Maximize Rigidity
- Max T.I.R. of .0002"
- Balanced at 25,000 RPM @ G2.5
- Adjustable Balance Screws



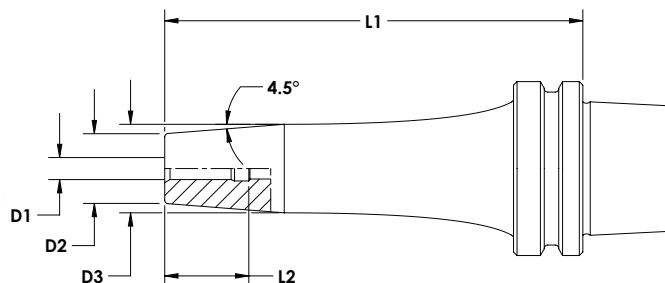
Standard

| Part Number | D1 | D2 | D3 | L1 | L2 | T |
|-------------|-------|------|------|------|-----|-------|
| H6L6A0250 | 0.250 | 0.83 | 1.06 | 7.48 | 1.4 | M5X1 |
| H6L6A0312 | 0.312 | 0.83 | 1.06 | 7.48 | 1.4 | M6X1 |
| H6L6A0375 | 0.375 | 0.94 | 1.26 | 7.48 | 1.6 | M8X1 |
| H6L6A0437 | 0.437 | 0.94 | 1.26 | 7.48 | 1.6 | M8X1 |
| H6L6A0500 | 0.500 | 0.94 | 1.26 | 7.48 | 1.8 | M10X1 |
| H6L6A0625 | 0.625 | 1.06 | 1.34 | 7.48 | 1.8 | M12X1 |
| H6L6A0750 | 0.750 | 1.30 | 1.65 | 7.48 | 2.1 | M16X1 |
| H6L6A0875 | 0.875 | 1.30 | 1.65 | 7.48 | 2.1 | M16X1 |
| H6L6A1000 | 1.000 | 1.73 | 2.09 | 7.48 | 2.1 | M16X1 |
| H6L6A1250 | 1.250 | 1.73 | 2.09 | 7.48 | 2.1 | M16X1 |

Metric

| Part Number | D1 | D2 | D3 | L1 | L2 | T |
|-------------|------|------|------|-------|-----|-------|
| H6L6A8006 | 6MM | 21MM | 27MM | 190MM | 1.4 | M5X1 |
| H6L6A8008 | 8MM | 21MM | 27MM | 190MM | 1.4 | M6X1 |
| H6L6A8010 | 10MM | 24MM | 32MM | 190MM | 1.6 | M8X1 |
| H6L6A8012 | 12MM | 24MM | 32MM | 190MM | 1.6 | M8X1 |
| H6L6A8014 | 14MM | 27MM | 34MM | 190MM | 1.8 | M10X1 |
| H6L6A8016 | 16MM | 27MM | 34MM | 190MM | 1.8 | M12X1 |
| H6L6A8020 | 20MM | 33MM | 42MM | 190MM | 2.1 | M16X1 |
| H6L6A8025 | 25MM | 44MM | 53MM | 190MM | 2.1 | M16X1 |
| H6L6A8032 | 32MM | 44MM | 53MM | 190MM | 2.1 | M16X1 |

- Parabolic Profile to Maximize Rigidity
- Max T.I.R. of .0002"
- Balanced at 25,000 RPM @ G2.5



Standard

| Part Number | D1 | D2 | D3 | L1 | L2 | T |
|-------------|-------|------|------|------|------|---|
| HOL3E0125 | 0.125 | 0.39 | 0.50 | 2.36 | 0.47 | - |
| HOL3E0187 | 0.187 | 0.39 | 0.50 | 2.36 | 1.0 | - |
| HOL3E0250 | 0.250 | 0.55 | 0.75 | 2.36 | 1.3 | - |

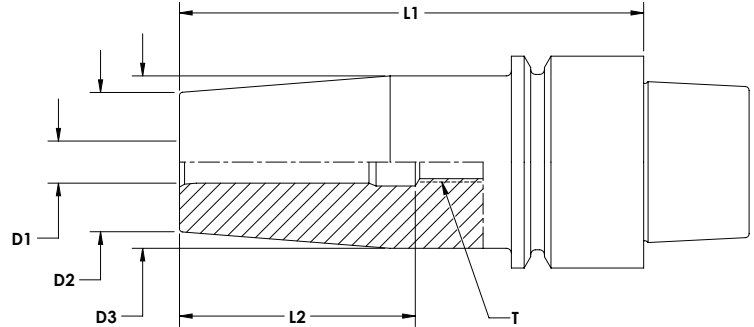
Metric

| Part Number | D1 | D2 | D3 | L1 | L2 | T |
|-------------|-----|------|-------|------|------|---|
| HOL3E8003 | 3MM | 10MM | 0.500 | 60MM | 0.47 | - |
| HOL3E8004 | 4MM | 10MM | 0.500 | 60MM | 0.75 | - |
| HOL3E8005 | 5MM | 10MM | 0.500 | 60MM | 1 | - |
| HOL3E8006 | 6MM | 14MM | 0.75 | 60MM | 1.3 | - |

Stub Gage Length



- Parabolic Profile to Maximize Rigidity
- Max T.I.R. of .0002"
- Balanced at 25,000 RPM @ G2.5



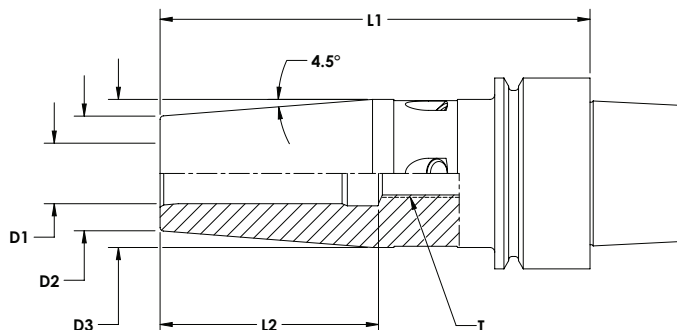
Standard

| Part Number | D1 | D2 | D3 | L1 | L2 | T |
|-------------|-------|------|------|------|------|-------|
| H1L3E0125 | 0.125 | 0.39 | 0.50 | 2.36 | 0.47 | - |
| H1L3E0187 | 0.187 | 0.39 | 0.50 | 2.36 | 1.0 | - |
| H1L3E0250 | 0.250 | 0.83 | 1.06 | 2.76 | 1.4 | M5X1 |
| H1L3E0312 | 0.312 | 0.83 | 1.06 | 2.76 | 1.4 | M6X1 |
| H1L3E0375 | 0.375 | 0.94 | 1.26 | 2.95 | 1.6 | M8X1 |
| H1L3E0500 | 0.500 | 0.94 | 1.26 | 3.15 | 1.8 | M10X1 |

Metric

| Part Number | D1 | D2 | D3 | L1 | L2 | T |
|-------------|------|------|-------|------|------|------|
| H1L3E8003 | 3MM | 10MM | 0.500 | 60MM | 0.47 | - |
| H1L3E8004 | 4MM | 10MM | 0.500 | 60MM | 0.75 | - |
| H1L3E8005 | 5MM | 10MM | 0.500 | 60MM | 1 | - |
| H1L3E8006 | 6MM | 21MM | 27MM | 70MM | 1.4 | M5X1 |
| H1L3E8008 | 8MM | 21MM | 27MM | 70MM | 1.4 | M6X1 |
| H1L3E8010 | 10MM | 24MM | 32MM | 75MM | 1.6 | M8X1 |
| H1L3E8012 | 12MM | 24MM | 32MM | 80MM | 1.6 | M8X1 |

- Max T.I.R. of .0002"
- Balanced at 25,000 RPM @ G2.5
- Adjustable Balance Screws



Standard

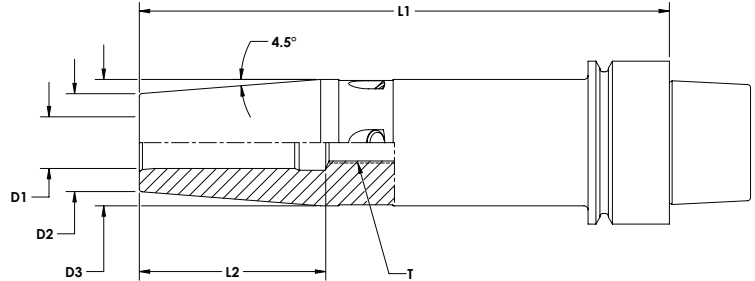
| Part Number | D1 | D2 | D3 | L1 | L2 | T |
|-------------|-------|------|------|------|-----|-------|
| H2L3E0125 | 0.125 | 0.39 | - | 2.36 | - | - |
| H2L3E0187 | 0.187 | 0.39 | - | 2.36 | - | - |
| H2L3E0250 | 0.250 | 0.83 | 1.06 | 3.15 | 1.4 | M5X1 |
| H2L3E0312 | 0.312 | 0.83 | 1.06 | 3.15 | 1.4 | M6X1 |
| H2L3E0375 | 0.375 | 0.94 | 1.26 | 3.15 | 1.6 | M8X1 |
| H2L3E0437 | 0.437 | 0.94 | 1.26 | 3.15 | 1.6 | M8X1 |
| H2L3E0500 | 0.500 | 0.94 | 1.26 | 3.54 | 1.8 | M10X1 |
| H2L3E0625 | 0.625 | 1.06 | 1.34 | 3.54 | 1.8 | M12X1 |

Metric

| Part Number | D1 | D2 | D3 | L1 | L2 | T |
|-------------|------|------|------|------|-----|-------|
| H2L3E8003 | 3MM | 10MM | - | 60MM | - | - |
| H2L3E8004 | 4MM | 10MM | - | 60MM | - | - |
| H2L3E8005 | 5MM | 10MM | - | 60MM | - | - |
| H2L3E8006 | 6MM | 21MM | 27MM | 80MM | 1.4 | M5X1 |
| H2L3E8008 | 8MM | 21MM | 27MM | 80MM | 1.4 | M6X1 |
| H2L3E8010 | 10MM | 24MM | 32MM | 80MM | 1.6 | M8X1 |
| H2L3E8012 | 12MM | 24MM | 32MM | 90MM | 1.6 | M8X1 |
| H2L3E8014 | 14MM | 27MM | 34MM | 90MM | 1.8 | M10X1 |
| H2L3E8016 | 16MM | 27MM | 34MM | 90MM | 1.8 | M12X1 |

Standard Gage Length

- Max T.I.R. of .0002"
- Balanced at 25,000 RPM @ G2.5
- Adjustable Balance Screws



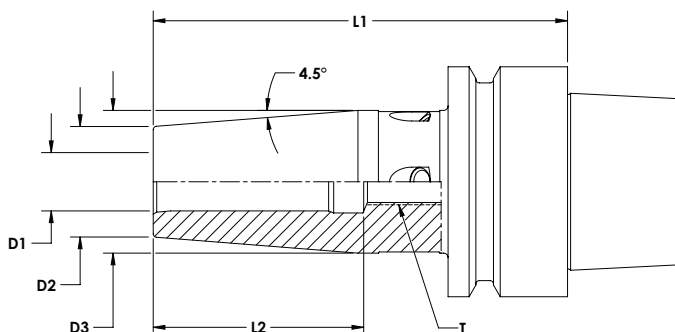
Standard

| Part Number | D1 | D2 | D3 | L1 | L2 | T |
|-------------|-------|------|------|------|-----|-------|
| H2L4E0250 | 0.250 | 0.83 | 1.06 | 5.12 | 1.4 | M5X1 |
| H2L4E0312 | 0.312 | 0.83 | 1.06 | 5.12 | 1.4 | M6X1 |
| H2L4E0375 | 0.375 | 0.94 | 1.26 | 5.12 | 1.6 | M8X1 |
| H2L4E0437 | 0.437 | 0.94 | 1.26 | 5.12 | 1.6 | M8X1 |
| H2L4E0500 | 0.500 | 0.94 | 1.26 | 5.12 | 1.8 | M10X1 |
| H2L4E0625 | 0.625 | 1.06 | 1.34 | 5.12 | 1.8 | M12X1 |

Metric

| Part Number | D1 | D2 | D3 | L1 | L2 | T |
|-------------|------|------|------|-------|-----|-------|
| H2L4E8006 | 6MM | 21MM | 27MM | 130MM | 1.4 | M5X1 |
| H2L4E8008 | 8MM | 21MM | 27MM | 130MM | 1.4 | M6X1 |
| H2L4E8010 | 10MM | 24MM | 32MM | 130MM | 1.6 | M8X1 |
| H2L4E8012 | 12MM | 24MM | 32MM | 130MM | 1.6 | M8X1 |
| H2L4E8014 | 14MM | 27MM | 34MM | 130MM | 1.8 | M10X1 |
| H2L4E8016 | 16MM | 27MM | 34MM | 130MM | 1.8 | M12X1 |

- Max T.I.R. of .0002"
- Balanced at 25,000 RPM @ G2.5
- Adjustable Balance Screws



Standard

| Part Number | D1 | D2 | D3 | L1 | L2 | T |
|-------------|-------|------|------|------|-----|-------|
| H3L3E0125 | 0.125 | 0.39 | - | 2.36 | - | - |
| H3L3E0187 | 0.187 | 0.39 | - | 2.36 | - | - |
| H3L3E0250 | 0.250 | 0.83 | 1.06 | 3.15 | 1.4 | M5X1 |
| H3L3E0312 | 0.312 | 0.83 | 1.06 | 3.15 | 1.4 | M6X1 |
| H3L3E0375 | 0.375 | 0.94 | 1.26 | 3.15 | 1.6 | M8X1 |
| H3L3E0437 | 0.437 | 0.94 | 1.26 | 3.35 | 1.6 | M8X1 |
| H3L3E0500 | 0.500 | 0.94 | 1.26 | 3.54 | 1.8 | M10X1 |
| H3L3E0625 | 0.625 | 1.06 | 1.34 | 3.74 | 1.8 | M12X1 |
| H3L3E0750 | 0.750 | 1.30 | 1.65 | 3.93 | 2.1 | M16X1 |

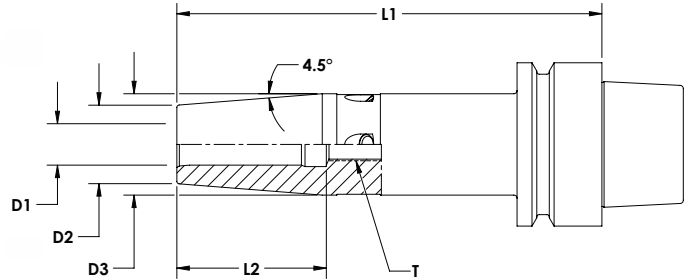
Metric

| Part Number | D1 | D2 | D3 | L1 | L2 | T |
|-------------|------|------|------|-------|-----|-------|
| H3L3E8003 | 3MM | 10MM | - | 60MM | - | - |
| H3L3E8004 | 4MM | 10MM | - | 60MM | - | - |
| H3L3E8005 | 5MM | 10MM | - | 60MM | - | - |
| H3L3E8006 | 6MM | 21MM | 27MM | 80MM | 1.4 | M5X1 |
| H3L3E8008 | 8MM | 21MM | 27MM | 80MM | 1.4 | M6X1 |
| H3L3E8010 | 10MM | 24MM | 32MM | 85MM | 1.6 | M8X1 |
| H3L3E8012 | 12MM | 24MM | 32MM | 90MM | 1.6 | M8X1 |
| H3L3E8014 | 14MM | 27MM | 34MM | 90MM | 1.8 | M10X1 |
| H3L3E8016 | 16MM | 27MM | 34MM | 95MM | 1.8 | M12X1 |
| H3L3E8020 | 20MM | 33MM | 42MM | 100MM | 2.1 | M16X1 |

Standard Gage Length



- Max T.I.R. of .0002"
- Balanced at 25,000 RPM @ G2.5
- Adjustable Balance Screws



Standard

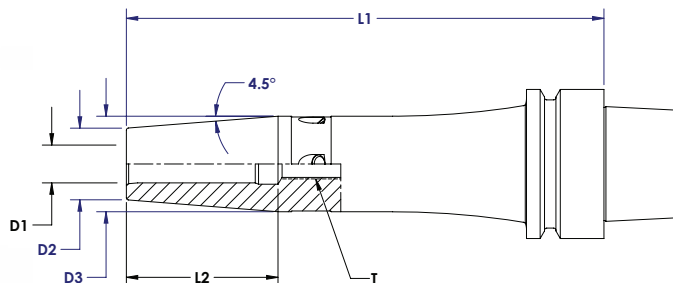
| Part Number | D1 | D2 | D3 | L1 | L2 | T |
|-------------|-------|------|------|------|-----|-------|
| H3L4E0250 | 0.250 | 0.83 | 1.06 | 5.12 | 1.4 | M5X1 |
| H3L4E0312 | 0.312 | 0.83 | 1.06 | 5.12 | 1.4 | M6X1 |
| H3L4E0375 | 0.375 | 0.94 | 1.26 | 5.12 | 1.6 | M8X1 |
| H3L4E0437 | 0.437 | 0.94 | 1.26 | 5.12 | 1.6 | M8X1 |
| H3L4E0500 | 0.500 | 0.94 | 1.26 | 5.12 | 1.8 | M10X1 |
| H3L4E0625 | 0.625 | 1.06 | 1.34 | 5.12 | 1.8 | M12X1 |
| H3L4E0750 | 0.750 | 1.30 | 1.65 | 5.12 | 2.1 | M16X1 |

Metric

| Part Number | D1 | D2 | D3 | L1 | L2 | T |
|-------------|------|------|------|-------|-----|-------|
| H3L4E8006 | 6MM | 21MM | 27MM | 130MM | 1.4 | M5X1 |
| H3L4E8008 | 8MM | 21MM | 27MM | 130MM | 1.4 | M6X1 |
| H3L4E8010 | 10MM | 24MM | 32MM | 130MM | 1.6 | M8X1 |
| H3L4E8012 | 12MM | 24MM | 32MM | 130MM | 1.6 | M8X1 |
| H3L4E8014 | 14MM | 27MM | 34MM | 130MM | 1.8 | M10X1 |
| H3L4E8016 | 16MM | 27MM | 34MM | 130MM | 1.8 | M12X1 |
| H3L4E8020 | 20MM | 33MM | 42MM | 130MM | 2.1 | M16X1 |



- Parabolic Profile to Maximize Rigidity
- Max T.I.R. of .0002"
- Balanced at 25,000 RPM @ G2.5
- Adjustable Balance Screws



Standard

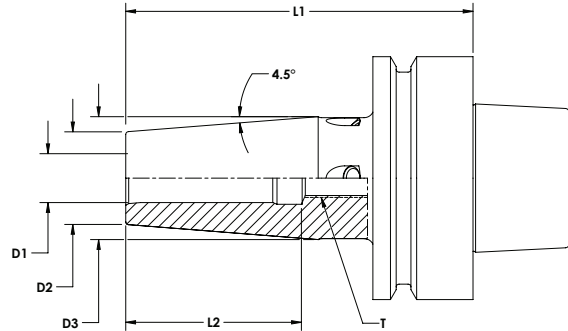
| Part Number | D1 | D2 | D3 | L1 | L2 | T |
|-------------|-------|------|------|------|-----|-------|
| H3L5E0250 | 0.250 | 0.83 | 1.06 | 6.30 | 1.4 | M5X1 |
| H3L5E0312 | 0.312 | 0.83 | 1.06 | 6.30 | 1.4 | M6X1 |
| H3L5E0375 | 0.375 | 0.94 | 1.26 | 6.30 | 1.6 | M8X1 |
| H3L5E0437 | 0.437 | 0.94 | 1.26 | 6.30 | 1.6 | M8X1 |
| H3L5E0500 | 0.500 | 0.94 | 1.26 | 6.30 | 1.8 | M10X1 |
| H3L5E0625 | 0.625 | 1.06 | 1.34 | 6.30 | 1.8 | M12X1 |
| H3L5E0750 | 0.750 | 1.30 | 1.65 | 6.30 | 2.1 | M16X1 |

Metric

| Part Number | D1 | D2 | D3 | L1 | L2 | T |
|-------------|------|------|------|-------|-----|-------|
| H3L5E8006 | 6MM | 21MM | 27MM | 160MM | 1.4 | M5X1 |
| H3L5E8008 | 8MM | 21MM | 27MM | 160MM | 1.4 | M6X1 |
| H3L5E8010 | 10MM | 24MM | 32MM | 160MM | 1.6 | M8X1 |
| H3L5E8012 | 12MM | 24MM | 32MM | 160MM | 1.6 | M8X1 |
| H3L5E8014 | 14MM | 27MM | 34MM | 160MM | 1.8 | M10X1 |
| H3L5E8016 | 16MM | 27MM | 34MM | 160MM | 1.8 | M12X1 |
| H3L5E8020 | 20MM | 33MM | 42MM | 160MM | 2.1 | M16X1 |

Stub Gage Length

- Max T.I.R. of .0002"
- Balanced at 25,000 RPM @ G2.5
- Adjustable Balance Screws



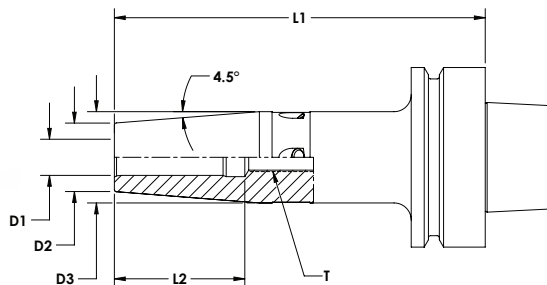
Standard

| Part Number | D1 | D2 | D3 | L1 | L2 | T |
|-------------|-------|------|------|------|-----|-------|
| H4L3F0125 | 0.125 | 0.39 | - | 3.15 | - | - |
| H4L3F0187 | 0.187 | 0.39 | - | 3.15 | - | - |
| H4L3F0250 | 0.250 | 0.83 | 1.06 | 3.15 | 1.4 | M5X1 |
| H4L3F0312 | 0.312 | 0.83 | 1.06 | 3.15 | 1.4 | M6X1 |
| H4L3F0375 | 0.375 | 0.94 | 1.26 | 3.35 | 1.6 | M8X1 |
| H4L3F0437 | 0.437 | 0.94 | 1.26 | 3.35 | 1.6 | M8X1 |
| H4L3F0500 | 0.500 | 0.94 | 1.26 | 3.54 | 1.8 | M10X1 |
| H4L3F0625 | 0.625 | 1.06 | 1.34 | 3.74 | 1.8 | M12X1 |
| H4L3F0750 | 0.750 | 1.30 | 1.65 | 3.93 | 2.1 | M16X1 |
| H4L3F1000 | 1.000 | 1.73 | 2.06 | 4.53 | 2.1 | M16X1 |

Metric

| Part Number | D1 | D2 | D3 | L1 | L2 | T |
|-------------|------|------|------|-------|-----|-------|
| H4L3F8003 | 3MM | 10MM | - | 80MM | - | - |
| H4L3F8004 | 4MM | 10MM | - | 80MM | - | - |
| H4L3F8005 | 5MM | 10MM | - | 80MM | - | - |
| H4L3F8006 | 6MM | 21MM | 27MM | 80MM | 1.4 | M5X1 |
| H4L3F8008 | 8MM | 21MM | 27MM | 80MM | 1.4 | M6X1 |
| H4L3F8010 | 10MM | 24MM | 32MM | 85MM | 1.6 | M8X1 |
| H4L3F8012 | 12MM | 24MM | 32MM | 90MM | 1.6 | M8X1 |
| H4L3F8014 | 14MM | 27MM | 34MM | 90MM | 1.8 | M10X1 |
| H4L3F8016 | 16MM | 27MM | 34MM | 95MM | 1.8 | M12X1 |
| H4L3F8020 | 20MM | 33MM | 42MM | 100MM | 2.1 | M16X1 |
| H4L3F8025 | 25MM | 44MM | 2.06 | 115MM | 2.1 | M16X1 |

- Max T.I.R. of .0002"
- Balanced at 25,000 RPM @ G2.5
- Adjustable Balance Screws



Standard

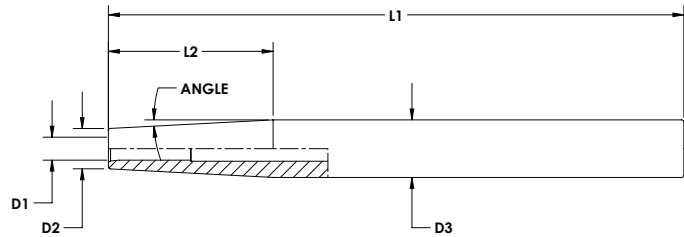
| Part Number | D1 | D2 | D3 | L1 | L2 | T |
|-------------|-------|------|------|------|-----|-------|
| H4L4F0250 | 0.250 | 0.83 | 1.06 | 5.12 | 1.4 | M5X1 |
| H4L4F0312 | 0.312 | 0.83 | 1.06 | 5.12 | 1.4 | M6X1 |
| H4L4F0375 | 0.375 | 0.94 | 1.26 | 5.12 | 1.6 | M8X1 |
| H4L4F0437 | 0.437 | 0.94 | 1.26 | 5.12 | 1.6 | M8X1 |
| H4L4F0500 | 0.500 | 0.94 | 1.26 | 5.12 | 1.8 | M10X1 |
| H4L4F0625 | 0.625 | 1.06 | 1.34 | 5.12 | 1.8 | M12X1 |
| H4L4F0750 | 0.750 | 1.30 | 1.65 | 5.12 | 2.1 | M16X1 |
| H4L4F1000 | 1.000 | 1.73 | 2.06 | 5.12 | 2.1 | M16X1 |

Metric

| Part Number | D1 | D2 | D3 | L1 | L2 | T |
|-------------|------|------|------|-------|-----|-------|
| H4L4F8006 | 6MM | 21MM | 27MM | 130MM | 1.4 | M5X1 |
| H4L4F8008 | 8MM | 21MM | 27MM | 130MM | 1.4 | M6X1 |
| H4L4F8010 | 10MM | 24MM | 32MM | 130MM | 1.6 | M8X1 |
| H4L4F8012 | 12MM | 24MM | 32MM | 130MM | 1.6 | M8X1 |
| H4L4F8014 | 14MM | 27MM | 34MM | 130MM | 1.8 | M10X1 |
| H4L4F8016 | 16MM | 27MM | 34MM | 130MM | 1.8 | M12X1 |
| H4L4F8020 | 20MM | 33MM | 42MM | 130MM | 2.1 | M16X1 |
| H4L4F8025 | 25MM | 44MM | 2.06 | 130MM | 2.1 | M16X1 |



- Extended tools for difficult reach
- Ideal for small diameter tools



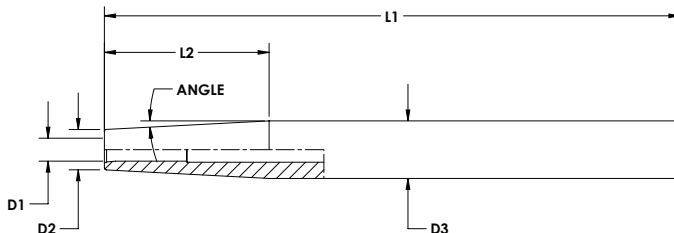
Standard

| Part Number | D1 | D2 | D3 | L1 | L2 | ANGLE |
|-------------|-------|------|-------|------|------|-------|
| SSL4-0802 | 0.125 | 0.31 | 0.500 | 6.30 | 1.18 | 4.5 |
| SSL4-0802 | 0.187 | 0.31 | 0.500 | 6.30 | 1.18 | 4.5 |
| SSL4-1002 | 0.125 | 0.39 | 0.625 | 6.30 | 1.47 | 4.5 |
| SSL4-1003 | 0.187 | 0.39 | 0.625 | 6.30 | 1.47 | 4.5 |
| SSL4-1004 | 0.250 | 0.39 | 0.625 | 6.30 | 1.47 | 4.5 |
| SSL4-1204 | 0.250 | 0.55 | 0.750 | 6.30 | 1.26 | 4.5 |
| SSL4-1206 | 0.375 | 0.55 | .0750 | 6.30 | 1.26 | 4.5 |
| SSL4-1606 | 0.375 | 0.79 | 1.000 | 6.30 | 1.35 | 4.5 |
| SSL4-1608 | 0.500 | 0.79 | 1.000 | 6.30 | 1.35 | 4.5 |
| SSL4-1610 | 0.625 | 0.87 | 1.000 | 6.30 | 0.85 | 4.5 |
| SSL4-2006 | 0.375 | 0.94 | 1.250 | 6.30 | 1.94 | 4.5 |
| SSL4-2008 | 0.500 | 0.94 | 1.250 | 6.30 | 1.94 | 4.5 |
| SSL4-2010 | 0.625 | 1.06 | 1.250 | 6.30 | 1.19 | 4.5 |

Metric

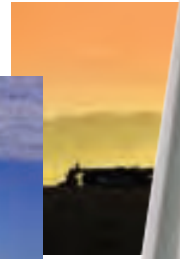
| Part Number | D1 | D2 | D3 | L1 | L2 | ANGLE |
|-------------|------|------|------|-------|--------|-------|
| SSL4-1203M | 3MM | 8MM | 12MM | 160MM | 25.4MM | 4.5 |
| SSL4-1204M | 4MM | 8MM | 12MM | 160MM | 25.4MM | 4.5 |
| SSL4-1603M | 3MM | 10MM | 16MM | 160MM | 38.1MM | 4.5 |
| SSL4-1604M | 4MM | 10MM | 16MM | 160MM | 38.1MM | 4.5 |
| SSL4-1605M | 5MM | 10MM | 16MM | 160MM | 38.1MM | 4.5 |
| SSL4-1606M | 6MM | 10MM | 16MM | 160MM | 38.1MM | 4.5 |
| SSL4-2005M | 5MM | 14MM | 20MM | 160MM | 38.1MM | 4.5 |
| SSL4-2006M | 6MM | 14MM | 20MM | 160MM | 38.1MM | 4.5 |
| SSL4-2008M | 8MM | 14MM | 20MM | 160MM | 38.1MM | 4.5 |
| SSL4-2508M | 8MM | 19MM | 25MM | 160MM | 38.1MM | 4.5 |
| SSL4-2510M | 10MM | 20MM | 25MM | 160MM | 31.8MM | 4.5 |
| SSL4-2512M | 12MM | 20MM | 25MM | 160MM | 31.8MM | 4.5 |
| SSL4-2514M | 14MM | 20MM | 25MM | 160MM | 31.8MM | 4.5 |
| SSL4-2516M | 16MM | 22MM | 25MM | 160MM | 19.1MM | 4.5 |
| SSL4-3210M | 10MM | 27MM | 32MM | 160MM | 31.8MM | 4.5 |
| SSL4-3212M | 12MM | 27MM | 32MM | 160MM | 31.8MM | 4.5 |
| SSL4-3214M | 14MM | 27MM | 32MM | 160MM | 31.8MM | 4.5 |
| SSL4-3216M | 16MM | 27MM | 32MM | 160MM | 31.8MM | 4.5 |
| SSL4-3220M | 20MM | 27MM | 32MM | 160MM | 31.8MM | 4.5 |

- Extended tools for difficult reach
- Ideal for small diameter tools



Metric

| Part Number | D1 | D2 | D3 | L1 | L2 | ANGLE |
|----------------|------|------|------|-------|---------|-------|
| SSL4-1603M-30 | 3MM | 9MM | 16MM | 160MM | 66.8MM | 3.0 |
| SSL4-1603M-30X | 3MM | 6MM | 16MM | 160MM | 95.4MM | 3.0 |
| SSL4-1604M-30 | 4MM | 10MM | 16MM | 160MM | 57.2MM | 3.0 |
| SSL4-1604M-30X | 4MM | 7MM | 16MM | 160MM | 85.9MM | 3.0 |
| SSL4-1605M-30 | 5MM | 11MM | 16MM | 160MM | 47.7MM | 3.0 |
| SSL4-1605M-30X | 5MM | 8MM | 16MM | 160MM | 76.3MM | 3.0 |
| SSL4-1606M-30 | 6MM | 12MM | 16MM | 160MM | 38.2MM | 3.0 |
| SSL4-1606M-30X | 6MM | 9MM | 16MM | 160MM | 66.8MM | 3.0 |
| SSL4-1608M-30 | 8MM | 14MM | 16MM | 160MM | 19.1MM | 3.0 |
| SSL4-1608M-30X | 8MM | 11MM | 16MM | 160MM | 47.7MM | 3.0 |
| SSL4-1610M-30 | 10MM | 16MM | 16MM | 160MM | - | 3.0 |
| SSL4-1610M-30X | 10MM | 13MM | 16MM | 160MM | 28.6MM | 3.0 |
| SSL5-2006M-30 | 6MM | 12MM | 20MM | 200MM | 76.3MM | 3.0 |
| SSL5-2006M-30X | 6MM | 9MM | 20MM | 200MM | 104.9MM | 3.0 |
| SSL5-2008M-30 | 8MM | 14MM | 20MM | 200MM | 57.2MM | 3.0 |
| SSL5-2008M-30X | 8MM | 11MM | 20MM | 200MM | 85.9MM | 3.0 |
| SSL5-2010M-30 | 10MM | 16MM | 20MM | 200MM | 38.2MM | 3.0 |
| SSL5-2010M-30X | 10MM | 13MM | 20MM | 200MM | 66.8MM | 3.0 |
| SSL5-2012M-30 | 12MM | 18MM | 20MM | 200MM | 19.1MM | 3.0 |
| SSL5-2012M-30X | 12MM | 15MM | 20MM | 200MM | 47.7MM | 3.0 |



Command Tooling Systems LLC.
13931 Sunfish lake Blvd
Ramsey MN 55303
Phone: 800-328.2197
Fax: 800.555.7694
www.commandtool.com
support@commandtool.com