

Global CNC Product Index



BUSHINGS

Toolholder Bushing Type "Z"	Page A1
Toolholder Bushing Type "C"	Page A2
Toolholder Bushing Type "CS" Short Series	Page A3
Toolholder Bushing Type "J"	Page A4
Toolholder Bushing Type "B"	Page A5
Toolholder Bushing Type "DD"	Page A6
Toolholder Bushing Type "L"	Page A7
Toolholder Bushing Type "LB"	Page A8
Toolholder Bushing Type "LBF"	Page A9
Boring Bar Sleeves	Page A10
Taper Drill Sockets	Page A11
5C Collet Holder Bushing.....	Page A12
Toolholder Bushing Type "K"	Page A13
Tool Collars	Page A13
Collet Chuck Straight Shank "ER" & TG ...	Page A14
Coolant Fed Bushing Type "XMZ"	Page A15
Small OD Boring Bar Sleeves.....	Page A15
Mazak Bushings Type "V" & "W"	Page A16
Mazak Bushings Type "P" & "Q"	Page A17
VDI Bushings Type "BV" & "CV"	Page A18
VDI Taper Drill Socket.....	Page A19

VDI: DIN 69880 Face Mounted

VDI Orientation Chart	Page B1-B2
Toolholder Blank.....	Page B3
Turning Toolholder	Page B4-B5
Turning Toolholder for Square Tool.....	Page B6
Turning Toolholder for Square Toolholder – Inverted	Page B7
Square Toolholder & Square Toolholder Inverted	Page B8-10
Axial & Radial Axial – Toolholder.....	Page B11
Boring Bar Holder – Internal Coolant Flow	Page B12
Boring Bar Holder – Dual External Coolant Flow	Page B13
Boring Bar Holder – External Single Coolant Flow.....	Page B14
Double Offset Boring Bar Holder.....	Page B15
Cut-Off Balde Holder Er Collet	Page B16
Collet Chuck – Form E3 ER & RDO Style	Page B17
Collet Chuck – Form E3 TG75 & TG100 Style.....	Page B18
Morse Taper VDI.....	Page B19
Interchangeable Head VDI Toolholders	Page B20
Bar Puller VDI	Page B21
Clamp Ring & Plug	Page B22

PERIPHERAL MOUNTED VDI

Facing Holder – Form C1 & C2.....	Page C1
Double Square – Form D1 OD Holder....	Page C2
Y-Axis Drill Holder	Page C2
ER Collet Chuck.....	Page C3
Double ID Boring Bar Holder	Page C4

Offset ID Boring Bar Holder.....	Page C5
Straight ID Boring Bar Holder Lathe Style OILY	Page C6

MAZAK Style VDI

Integrex & SQT Machines

Turning Toolholder MZK Left Hand.....	Page D1
Turning Toolholder MZK Left Hand Inverted	Page D1
Boring Bar Holder MZK Single External Coolant Flow	Page D2
Collet Chuck MZK ER32 or TG100	Page D2
SQT Forward Turning Toolholder.....	Page D3
SQT Reverse Turning Toolholder.....	Page D3
SQT Double Turning Toolholder	Page D4
SQT Cut-off Holder	Page D4
SQT Facing Holder	Page D5
SQT Single Boring Bar Holder	Page D5
SQT Double Boring Bar Holder	Page D6
SQT U-Drill Holder	Page D6

NAKAMURA Style VDI

Collet Chuck	Page E1
Morse Taper Adaptor	Page E1
Boring Bar Holder	Page E2

EMCO Style VDI

Single Square Toolholder	Page F1
Double Toolholder	Page F1
Radial Toolholder	Page F2
Boring Bar Holder	Page F2
Offset Boring Bar Holder	Page F3
Toolholder Bushing Type "F"	Page F3

DRIVEN VDI REPAIR

Guaranteed Driven VDI Repair	Page G1
Driven VDI Repair Form	Page G2
Driven VDI Toolholders	Page G3

TOOL BLOCKS

Okuma Style ID Tool Block	Page H1
Okuma Style Step OD Tool Block	Page H1
Okuma Style OD Square Tool Block.....	Page H2
Haas Style ID Tool Block.....	Page H2
Haas Style OD Tool Block	Page H3
Mori Seiki ID Tool Block.....	Page H3
Mori Seiki OD Tool Block.....	Page H4
Romi Style ID Tool Block	Page H4
Romi Style ID Tool Blocks.....	Page H5
Okuma Howa ID & OD Tool Blocks	Page H6
Mazak ID Tool Blocks	Page H7
*****Tool Blocks for All Machines Available*****	

NEW PRODUCTS

The "OILY"	Page I1
Bar Pullers.....	Page I1
Coolant Nozzles	Page I2

BUSHING

VDI: DIN 69880

PERIPHERAL VDI

MAZAK

NAKAMURA

EMCO VDI

DRIVEN VDI

TOOL BLOCKS

NEW PRODUCTS





POLICY AND PROCEDURES

1. **GUARANTEE / SERVICE:**

The products are guaranteed 100% to be free from defect in material and workmanship. Defective products will be replaced at no charge. We guarantee our Toolholders for two years from cracking or breaking. However, items that have been misused, abused, accidentally damaged or where alterations have been made will not be guaranteed.

2. **DELIVERY:**

All merchandise will be shipped FOB, Global CNC, Livonia, MI., 48150. We ship via UPS unless otherwise specified. All merchandise will be shipped same day as order placement for stock items. All orders will be shipped as complete as possible with non-stock items being backordered.

3. **MINIMUM ORDERS:**

Global CNC does not have a minimum order requirement.

4. **DROP SHIPMENTS:**

There will be no additional charge for any order requesting drop shipments.

5. **PRICES:**

Prices are guaranteed at time of order. Prices are subject to change without notice.

6. **SPECIALS:**

Specials are priced per quote. All special products are non-returnable and non-cancelable once the order is placed.

7. **TERMS:**

All first orders ship C.O.D. or Prepayment. Approved accounts are Net 30 days. Past due accounts, over 45 days, will be placed on Credit Hold and the order will not ship until the account is up to date. Delinquent accounts will be subject to C.O.D. terms.

8. **CLAIMS / SHORTAGES / SHORT SHIPMENTS:**

Claims, shortages or short shipments must be reported within 3 days after receipt of merchandise. Packaging must be retained for damaged goods inspection.

9. **RETURNS / RESTOCKING CHARGES:**

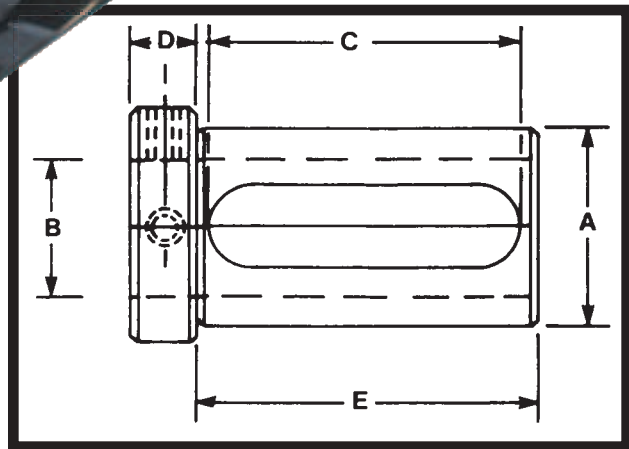
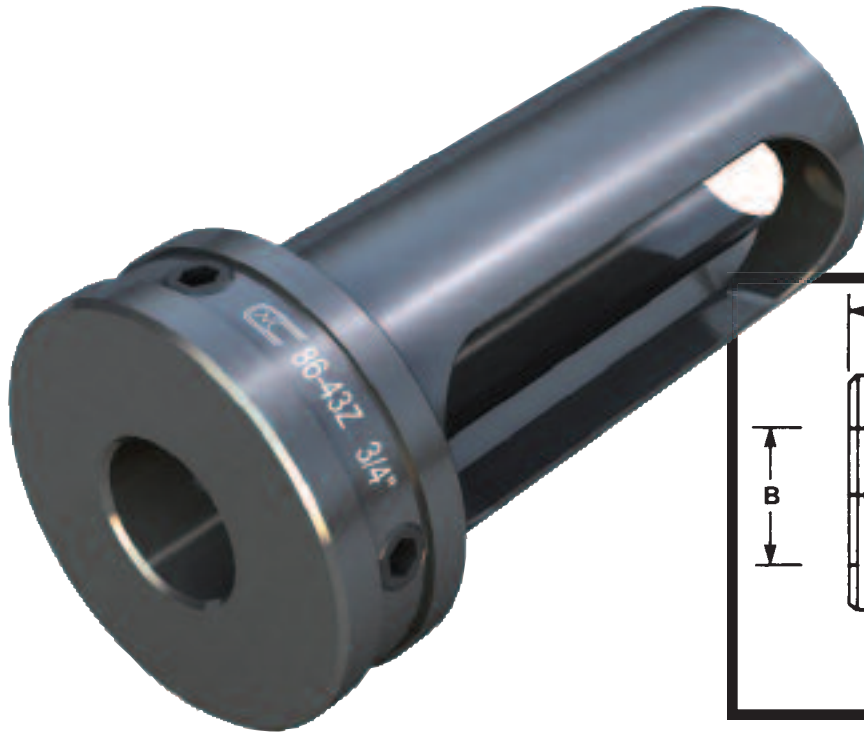
All returns must be authorized and accompanied by an RGA number issued by Global CNC and shipped prepaid. We will accept standard item returns within 30 days of order shipment as long as the items have not been used. If the error was our responsibility, there will be no restocking charge. All other returns will be subject to a restocking charge. All authorized returns must be packed properly in the original packing material. Any damages will be charged to the customer. Credit cannot be issued for returned material if it has been marked, altered or used.





Toolholder Bushing Type “Z”

The most flexible Toolholder Bushing for all types of CNC Turning Centers, Turret Lathes and Chuckers. The Elongated Slot gives the user a complete interchangeability with all brands of equipment. The added Set Screws in the Head allow for increased rigidity. The bushings are hardened and precision ground concentric. Can also be used for Preset Tooling. Select the O.D. size that fits your machine and order from the chart below.



CNC PART NUMBER	BUSH DIA.		STANDARD BORE SIZES STOCKED		LENGTH OF SLOT			HEAD THICKNESS	LENGTH UNDER HEAD		
	A		B		ZS	Z	ZL	D	E		
	INCH	MM	INCH	MM	C						
CNC 86-40Z	3/4	20	1/4, 5/16, 3/8, 1/2	6, 8, 10, 12		2 3/8		1/2		2 1/2	
CNC 86-41Z	1	25	1/4, 5/16, 3/8, 1/2, 5/8, 3/4	8, 10, 12, 16, 20		2 3/8		1/2		2 3/4	
CNC 86-42Z	1 1/4	32	3/8, 1/2, 5/8, 3/4, 7/8, 1	10, 12, 16, 20, 25	1 7/8	2 5/8	3 1/8	5/8	2 1/4	3	3 3/4
CNC 86-43Z	1 1/2	40	3/8, 1/2, 5/8, 3/4, 7/8, 1, 1 1/4	10, 12, 16, 20, 25, 32	2 1/8	2 7/8	3 5/8	3/4	2 1/2	3 1/4	4
CNC 86-44Z	1 3/4	45	1/2, 5/8, 3/4, 7/8, 1, 1 1/4, 1 1/2	12, 16, 20, 25, 32, 40	2 3/8	3 1/8	3 7/8	3/4	2 3/4	3 1/2	4 1/4
CNC 86-45Z	2	50	1/2, 5/8, 3/4, 7/8, 1, 1 1/4, 1 1/2, 1 3/4	12, 16, 20, 25, 32, 40, 45	2 5/8	3 1/2	4 1/8	3/4	3	3 3/4	4 1/2
CNC 86-46Z	2 1/2	65	5/8, 3/4, 7/8, 1, 1 1/4, 1 1/2, 1 3/4, 2, 2 1/4	16, 20, 25, 32, 40, 45, 50	3 1/8	3 7/8	4 5/8	3/4	3 1/2	4 1/4	5
CNC 86-47Z	3	80	1, 1 1/4, 1 1/2, 1 3/4, 2, 2 1/4, 2 1/2	25, 32, 40, 50, 60, 65	3 3/8	4 3/8	5 3/8	3/4	3 3/4	4 3/4	5 3/4
CNC 86-48Z	3 1/2	90	1 1/4, 1 1/2, 1 3/4, 2, 2 1/4, 2 1/2, 3	32, 40, 50, 60, 65	3 7/8	4 7/8	5 7/8	1	4 1/2	5 1/2	6 1/2
CNC 86-49Z	4	100	1 1/2, 1 3/4, 2, 2 1/4, 2 1/2, 3	40, 50, 60, 65, 80	4 3/8	5 5/8	7 1/8	1	5	6 1/4	7 1/2

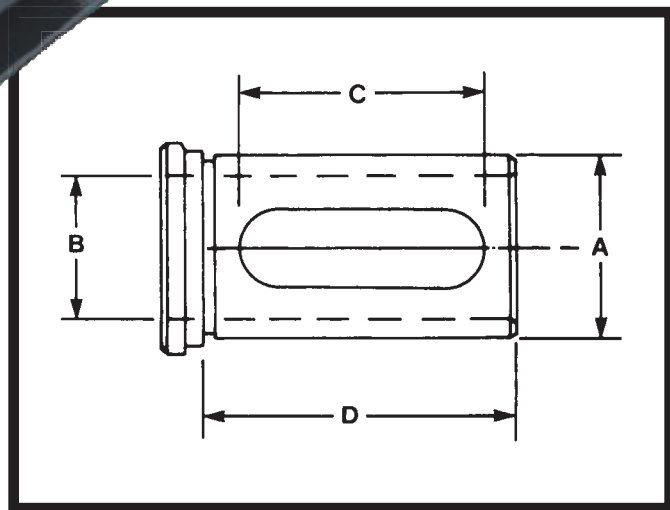
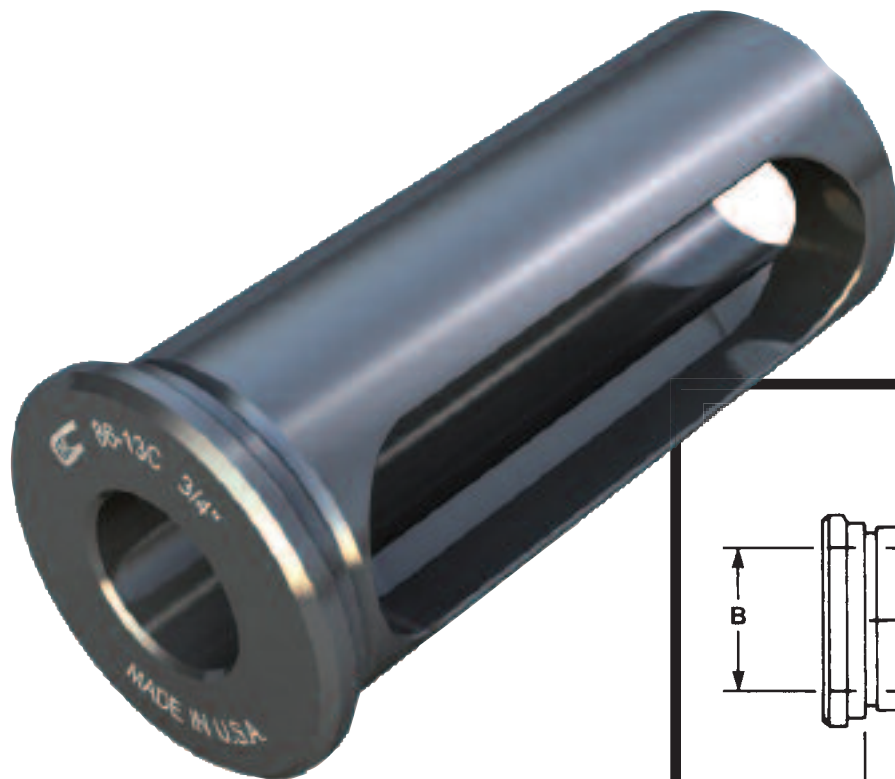
*Special sizes available to fit your machine specifications: inch-metric, metric-inch, or metric-metric.

*All Orders ship standard in inch sizes. If required; please specify metric O.D. or I.D., when ordering.



Toolholder Bushing Type “C”

This CNC Type C Bushing is designed for universal use on all C/N/C turning machines. To adapt a wide variety of Boring Bars, Drills, Reamers and Shank type tools. Precision machine hardened and ground concentric; made in the U.S.A. – BUILT TO LAST! Select the O.D. size that fits your machine and order from the chart below.



CNC PART NUMBER	BUSH DIA.		STANDARD BORE SIZES STOCKED		LENGTH OF SLOT C	LENGTH UNDER HEAD D	NUMBER OF SLOTS
	A		B				
	INCH	MM	INCH	MM			
CNC 86-10C	3/4	20	1/4, 5/16, 3/8, 1/2	6, 8, 10, 12	1 1/2	2	1
CNC 86-11C	1	25	1/4, 5/16, 3/8, 1/2, 5/8, 3/4	8, 10, 12, 16, 20	2 3/8	2 3/4	1
CNC 86-12C	1 1/4	32	3/8, 1/2, 5/8, 3/4, 7/8, 1	10, 12, 16, 20, 25	2 3/4	3 1/4	1
CNC 86-13C	1 1/2	40	3/8, 1/2, 5/8, 3/4, 7/8, 1, 1 1/4	10, 12, 16, 20, 25, 32	3	3 3/8	1
CNC 86-14C	1 3/4	45	1/2, 5/8, 3/4, 7/8, 1, 1 1/4, 1 1/2	12, 16, 20, 25, 32, 40	3 1/8	3 1/2	1
CNC 86-15C	2	50	1/2, 5/8, 3/4, 1, 1 1/4, 1 1/2, 1 3/4	12, 16, 20, 25, 32, 40, 45	3 5/8	4	1
CNC 86-16C	2 1/2	65	3/4, 1, 1 1/4, 1 1/2, 1 3/4, 2, 2 1/4	20, 25, 32, 40, 45, 50	4 1/8	4 1/2	1 or 2*
CNC 86-17C	3	80	1, 1 1/4, 1 1/2, 1 3/4, 2, 2 1/4, 2 1/2	25, 32, 40, 45, 50, 60, 65	4 5/8	5	1 or 2*
CNC 86-18C	3 1/2	90	1, 1 1/4, 1 1/2, 1 3/4, 2, 2 1/4, 2 1/2, 3	25, 32, 40, 45, 50, 60, 65	5	5 3/4	1 or 2*

*Special sizes available to fit your machine specifications: inch-metric, metric-inch, or metric-metric.

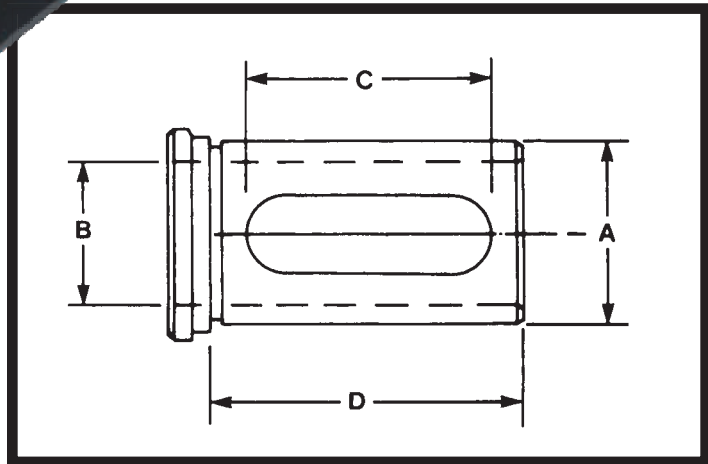
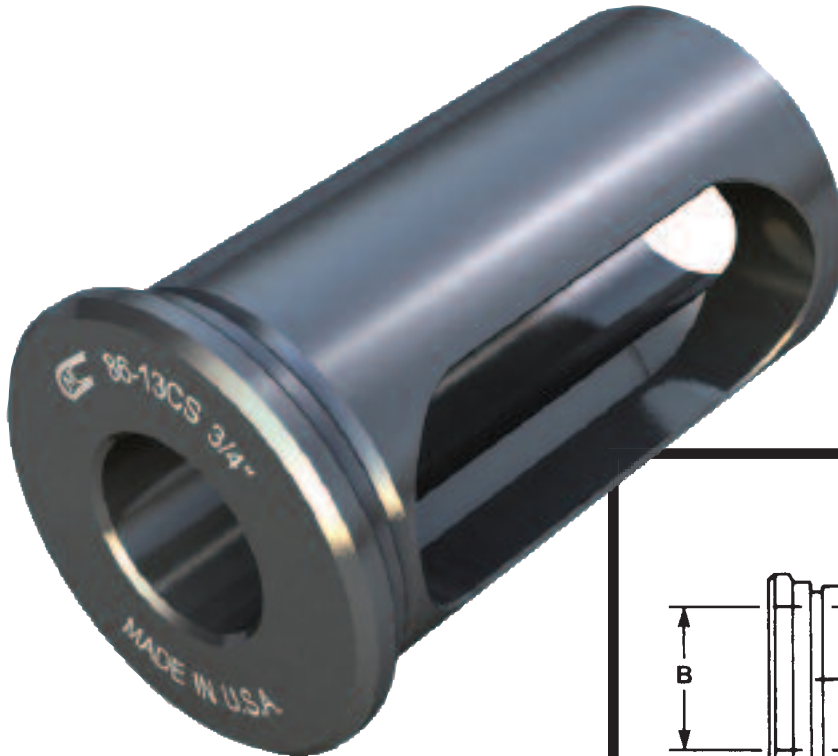
*Bushings 2 1/2 OD and larger: ID's larger than 1 1/2" have 2 slots.

*All Orders ship standard in inch sizes. If required; please specify metric O.D. or I.D. when ordering.



Toolholder Bushing Type “CS” Short Series

Introducing the “all new” CNC Type CS Bushing designed for universal use on all CNC Turning machines. The Bushings are hardened & precision ground concentric. Select the O.D. size that fits your machine and order from the chart below.



CNC PART NUMBER	BUSH DIA.		STANDARD BORE SIZES STOCKED		LENGTH OF SLOT C	LENGTH UNDER HEAD D
	A		B			
	INCH	MM	INCH	MM		
CNC 86-10CS	3/4	20	1/4, 5/16, 3/8, 1/2	6, 8, 10, 12	1 1/8	1 1/2
CNC 86-11CS	1	25	1/4, 5/16, 3/8, 1/2, 5/8, 3/4	8, 10, 12, 16, 20	1 3/8	1 3/4
CNC 86-12CS	1 1/4	32	3/8, 1/2, 5/8, 3/4, 7/8, 1	10, 12, 16, 20, 25	1 3/4	2 1/8
CNC 86-13CS	1 1/2	40	3/8, 1/2, 5/8, 3/4, 7/8, 1, 1 1/4	10, 12, 16, 20, 25, 32	2 1/8	2 1/2
CNC 86-14CS	1 3/4	45	1/2, 5/8, 3/4, 7/8, 1, 1 1/4, 1 1/2	12, 16, 20, 25, 32, 40	2 5/8	3
CNC 86-15CS	2	50	1/2, 5/8, 3/4, 1, 1 1/4, 1 1/2, 1 3/4	12, 16, 20, 25, 32, 40, 45	3	3 1/2
CNC 86-16CS	2 1/2	65	3/4, 1, 1 1/4, 1 1/2, 1 3/4, 2, 2 1/4	20, 25, 32, 40, 45, 50	3 1/2	4
CNC 86-17CS	3	80	1, 1 1/4, 1 1/2, 1 3/4, 2, 2 1/4, 2 1/2	25, 32, 40, 45, 50, 60, 65	4 1/8	4 1/2
CNC 86-18CS	3 1/2	90	1, 1 1/4, 1 1/2, 1 3/4, 2, 2 1/4, 2 1/2, 3	25, 32, 40, 45, 50, 60, 65	4 3/4	5 1/4

*Special sizes available to fit your machine specifications: inch-metric, metric-inch, or metric-metric.

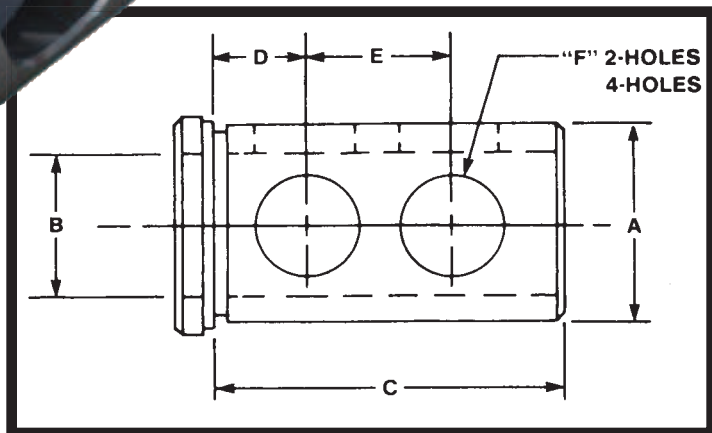
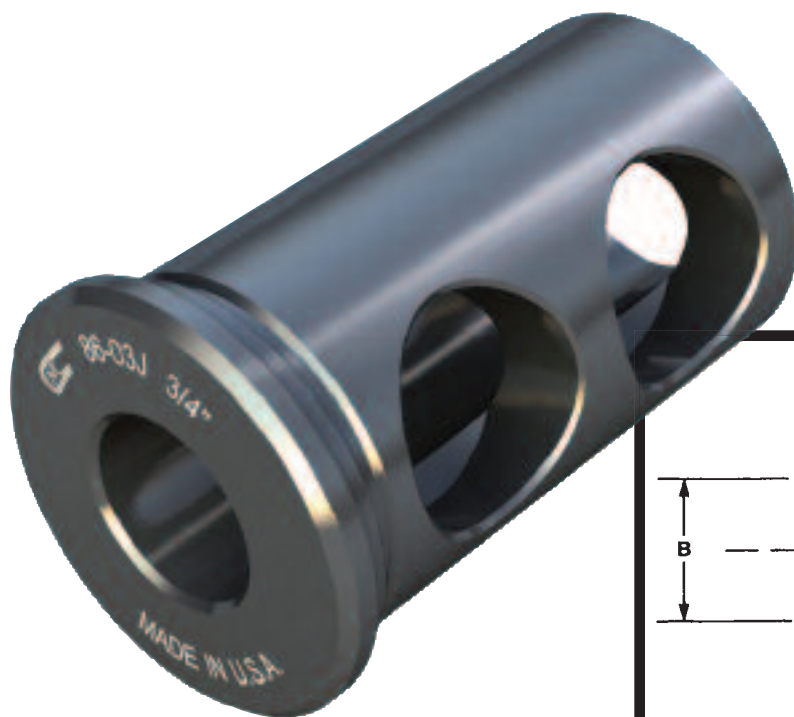
*All Orders ship standard in inch sizes. If required; please specify metric O.D. or I.D., when ordering.





Toolholder Bushing Type “J”

This Type J Toolholder Bushing, with long solid body, has clearance holes so that you can clamp directly on the tool with set screws for positive alignment of the cutting edge of the tool. They are hardened and precision ground concentric. Select the O.D. size that fits your machine and order from the chart below.



CNC PART NUMBER	BUSH DIA.		STANDARD BORE SIZES STOCKED		SPECIAL BORE SIZES AVAILABLE		LENGTH UNDER HEAD	LENGTH DIMENSIONS		HOLE SIZE	NO. HOLES
	A		B		MIN.	MAX.	C	D	E		
	IN.	MM	IN.	MM							
CNC 86-01J	3/4	20	1/4, 5/16, 3/8, 1/2,	6, 8, 10, 12,	3/16	5/8	1 1/2	3/9	13/16	3/8	2
CNC 86-02J	1	25	3/8, 1/2, 5/8, 3/4	10, 12, 16, 20	1/4	7/8	1 3/4	7/16	7/8	5/8	2
CNC 86-12J	1 1/4	32	3/8, 1/2, 5/8, 3/4, 7/8, 1	10, 12, 16, 20, 25	1/4	1 1/8	2 1/8	5/8	1	3/4	2
CNC 86-03J	1 1/2	40	3/8, 1/2, 5/8, 3/4, 7/8, 1, 1 1/4	10, 12, 16, 20, 25, 32	1/4	1 1/4	2 1/2	1 1/16	1 1/8	7/8	2
CNC 86-04J	1 3/4	45	1/2, 5/8, 3/4, 7/8, 1, 1 1/4, 1 1/2	12, 16, 20, 25, 32, 40	1/4	1 1/2	3	3/4	1 1/4	7/8	2
CNC 86-05J	2	50	1/2, 5/8, 3/4, 7/8, 1, 1 1/4, 1 1/2, 1 3/4	12, 16, 20, 25, 32, 40, 45	3/8	1 3/4	3 1/2	3/4	1 1/2	1	2
CNC 86-06J	2 1/2	65	3/4, 7/8, 1, 1 1/4, 1 1/2, 1 3/4, 2, 2 1/4	20, 25, 32, 40, 45, 50	1/2	2 1/4	4	7/8	1 3/4	1 1/4	2
CNC 86-07J	3	80	1, 1 1/4, 1 1/2, 1 3/4, 2, 2 1/4, 2 1/2	25, 32, 40, 45, 50, 60, 65	1/2	2 1/2	4 1/2	1	2	1 1/4	4
CNC 86-08J	3 1/2	90	1, 1 1/4, 1 1/2, 1 3/4, 2, 2 1/4, 2 1/2, 3	25, 32, 40, 45, 50, 60, 65	3/4	3	5 1/4	1 1/4	2 1/2	1 1/4	4

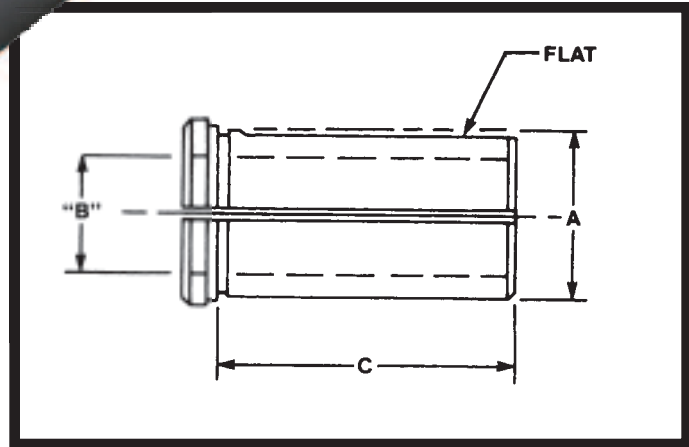
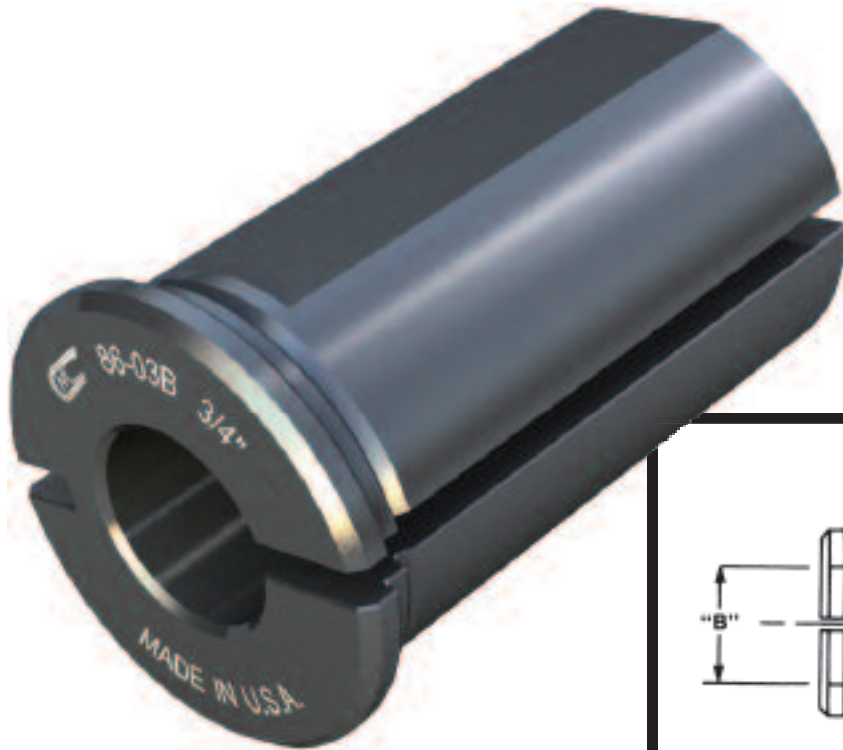
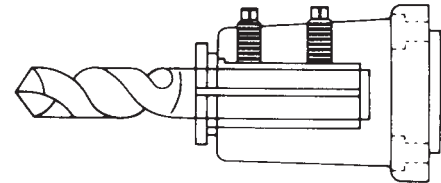
*Special sizes available to fit your machine specifications: inch-metric, metric-inch, or metric-metric.

*All Orders ship standard in inch sizes. If required; please specify metric O.D. or I.D., when ordering.



Toolholder Bushing Type “B”

These split Type B Bushings are manufactured with flexible manufacturing systems, for all Types and sizes of CNC Lathes and Chuckers; are Heat Treated and precision ground concentric. It is used to adapt Drills, Boring Bars, and other Shank Tools. Select the O.D. size that fits your machine and order from the chart below.



CNC PART NUMBER	BUSH DIA.		STANDARD BORE SIZES STOCKED		SPECIAL BORE SIZES AVAILABLE		LENGTH UNDER HEAD
	A		B		MIN.	MAX.	C
	IN.	MM	IN.	MM			
CNC 86-01B	3/4	20	1/4, 5/16, 3/8, 1/2	6, 8, 10, 12	3/16	5/8	1 1/2
CNC 86-02B	1	25	3/8, 1/2, 5/8, 3/4	10, 12, 16, 20	3/16	7/8	1 3/4
CNC 86-12B	1 1/4	32	3/8, 1/2, 5/8, 3/4, 7/8, 1	10, 12, 16, 20, 25	3/16	1	2 1/8
CNC 86-03B	1 1/2	40	3/8, 1/2, 5/8, 3/4, 7/8, 1, 1 1/4	10, 12, 16, 20, 25, 32	3/16	1 1/4	2 1/2
CNC 86-04B	1 3/4	45	1/2, 5/8, 3/4, 7/8, 1, 1 1/4, 1 1/2	10, 12, 16, 20, 25, 32, 40	1/4	1 1/2	3
CNC 86-05B	2	50	1/2, 5/8, 3/4, 7/8, 1, 1 1/4, 1 1/2, 1 3/4,	12, 16, 20, 25, 32, 40	1/2	1 3/4	3 1/2
CNC 86-06B	2 1/2	65	1/2, 5/8, 3/4, 7/8, 1, 1 1/4, 1 1/2, 1 3/4, 2, 2 1/4	20, 25, 32, 40, 45, 50	1/2	2 1/4	4
CNC 86-07B	3	80	1, 1 1/4, 1 1/2, 1 3/4, 2, 2 1/4, 2 1/2	25, 32, 40, 45, 50, 60, 65	5/8	2 1/2	4 1/2
CNC 86-08B	3 1/2	90	1, 1 1/4, 1 1/2, 1 3/4, 2, 2 1/4, 2 1/2, 3	25, 32, 40, 45, 50, 60, 65	5/8	3	5 1/4

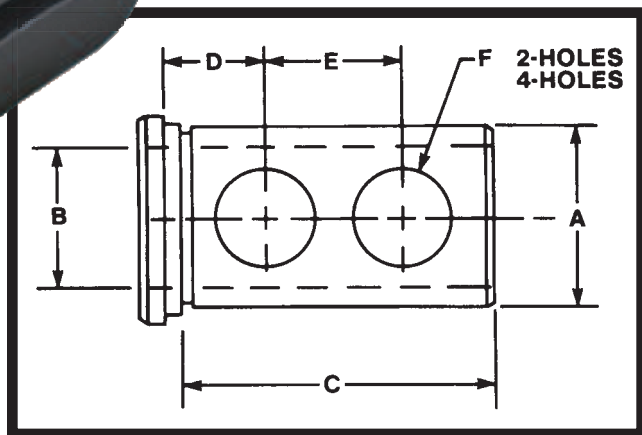
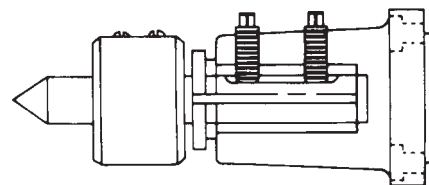
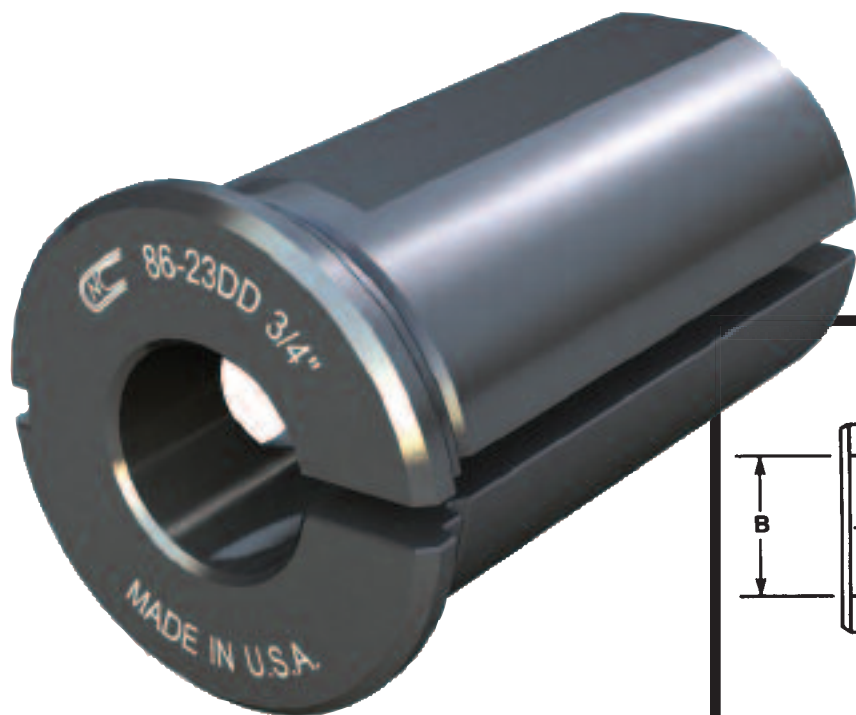
*Special sizes available to fit your machine specifications: inch-metric, metric-inch, or metric-metric.

*All Orders ship standard in inch sizes. If required; please specify metric O.D. or I.D., when ordering.



Toolholder Bushing Type “DD”

With the combination of the industry standard “B” style split bushing and “J” set screw clearance bushing design, CNC has a set a precedent with its new innovative “DD” Double Duty bushing. This new improved “DD” bushing with clearance holes and split milled flat can be used as a conventional “B” style or “J” style bushing. “Double Duty” one of CNC’s latest innovations. Select the O.D. size that fits your machine and order from the chart below.



CNC PART NUMBER	BUSH DIA.		STANDARD BORE SIZES STOCKED		SPECIAL BORE SIZES AVAILABLE		LENGTH UNDER HEAD	LENGTH DIMENSIONS		HOLE SIZE	NO. HOLES
	A		B		MIN.	MAX.	C	D	E		
	IN.	MM	IN.	MM							
CNC 86-23DD	1½	40	⅜, ½, ⅝, ¾, ⅞, 1, 1¼	10, 12, 16, 20, 25, 32	¼	1¼	2½	1/16	1⅛	⅞	2
CNC 86-24DD	1¾	45	½, ⅝, ¾, ⅞, 1, 1¼, 1½	12, 16, 20, 25, 32, 40	⅜	1½	3	¾	1¼	⅞	2
CNC 86-25DD	2	50	½, ⅝, ¾, ⅞, 1, 1¼, 1½, 1¾	12, 16, 20, 25, 32, 45, 50	⅜	1¾	3½	¾	1½	1	2
CNC 86-26DD	2½	65	½, ⅝, ¾, ⅞, 1, 1¼, 1½, 1¾, 2, 2¼	20, 25, 32, 40, 45, 50	½	2¼	4	⅞	1¾	1¼	2
CNC 86-27DD	3	80	1, 1¼, 1½, 1¾, 2, 2¼, 2½	25, 32, 40, 45, 50, 60, 65	¾	2½	4½	1	2	1¼	4
CNC 86-28DD	3½	90	1½, 1¾, 2, 2¼, 2½, 3	25, 32, 40, 45, 50, 60, 65	¾	3	5¼	1¼	2½	1¼	4

*Special sizes available to fit your machine specifications: inch-metric, metric-inch, or metric-metric.

*All Orders ship standard in inch sizes. If required; please specify metric O.D. or I.D., when ordering.

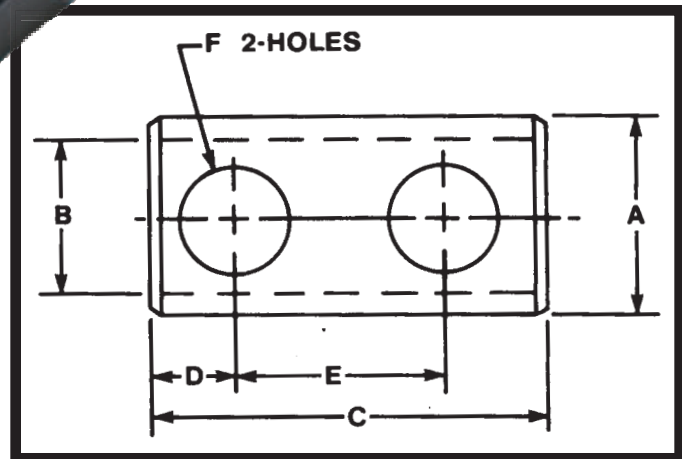




Toolholder Bushing Type “L”

All “L” style bushings are shoulder-less, have set screw clearance holes opposite the slot and have a split with a flat on the O.D.

“L” Style Bushings are used to adapt drills, boring bars and shank tools to any size in a standard turret or toolholder. CNC has full selection and assortment of these bushings. We can supply these to you, minimizing production downtime – allowing you to increase production. Select the O.D. size that fits your machine and order from the chart below.



CNC PART NUMBER	BUSH DIA.		STANDARD BORE SIZES STOCKED		SPECIAL BORE SIZES AVAILABLE		OVERALL LENGTH	LENGTH DIMENSIONS			HOLE SIZE	NO. HOLES
	A		B		MIN.	MAX.	C	D	E	F		
	IN.	MM	IN.	MM								
CNC 86-53L	1½	40	⅜, ½, ⅝, ¾, 1, 1¼	10, 12, 16, 20, 25, 32	¼	1¼	3	¾	1⅝	⅞	2	
CNC 86-54L	1¾	45	½, ⅝, ¾, 1, 1¼, 1½	12, 16, 20, 25, 32, 40	⅜	1½	3	¾	1⅝	⅞	2	
CNC 86-56L	2¼	60	⅝, ¾, 1, 1¼, 1½, 1¾, 2	16, 20, 25, 32, 40, 50	½	2	4½	⅞	2	1	2	
CNC 86-57L	2¾	70	¾, 1, 1¼, 1½, 1¾, 2, 2¼	20, 25, 32, 40, 50	½	2¼	4½	⅞	2	1	2	

*Special sizes available to fit your machine specifications: inch-metric, metric-inch, or metric-metric.

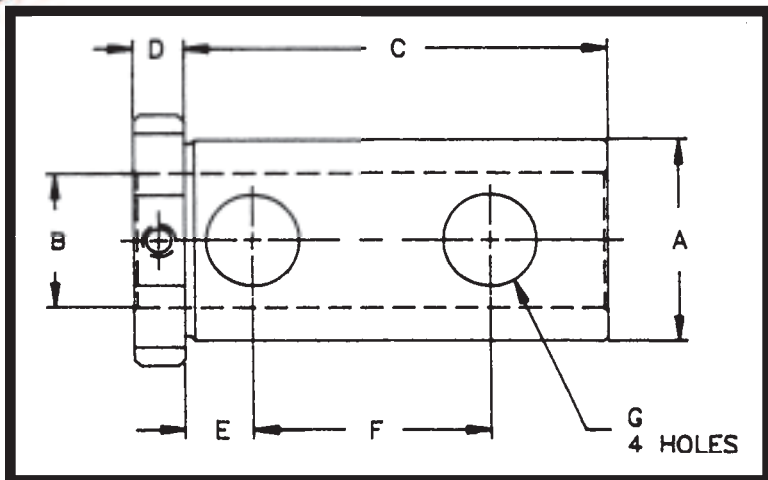
*All Orders ship standard in inch sizes. If required; please specify metric O.D. or I.D., when ordering.





Toolholder Bushing Type “LB”

This Type LB Toolholder Bushing with long solid body, has four clearance holes so that you can clamp directly on the tool with Set Screws for positive alignment of the cutting edge of the tool. Manufactured to include clearance notches for coolant. They are hardened and precision ground concentric. For use on all Okuma CNC Machines.



CNC PART NUMBER	BUSHING DIA.		STANDARD BORE SIZES STOCKED		LENGTH UNDER HEAD	HEAD THICKNESS	LENGTH DIM.		HOLE SIZE
	A		B		C	D	E	F	G
	INCH	M M	INCH	M M					
CNC 86-12LB	1¼	32	⅜, ½, ⅝, ¾, ⅞, 1	10, 12, 16, 20, 25	3⅜	⅜	½	1¾	⅝
CNC 86-13LB	1½	40	⅜, ½, ⅝, ¾, ⅞, 1, 1¼	10, 12, 16, 20, 25, 32	3⅜	⅜	½	1¾	⅝
CNC 86-15LB	2	50	½, ⅝, ¾, ⅞, 1, 1¼, 1½, 1¾	12, 16, 20, 25, 32, 40, 45	4½	½	½	2¾	11/16

*Special sizes available to fit your machine specifications: inch-metric, metric-inch, or metric-metric.

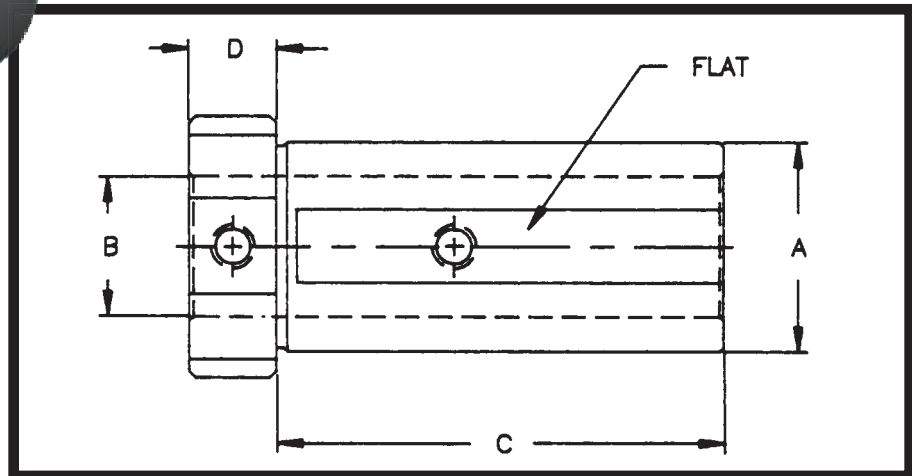
*All Orders ship standard in inch sizes. If required; please specify metric O.D. or I.D., when ordering.





Toolholder Bushing Type “LBF”

These LBF Type Bushings are manufactured with a flat for clamping the Toolholder and two set screws for clamping a variety of Drills, Boring Bars and other Shank Tools. Equipped with two clearance notches for coolant. Are Heat Treated and precision ground concentric. This Universal Style is good for Coolant Through the Tool applications due to its solid configuration. For use on all Okuma CNC Machines.



CNC PART NUMBER	BUSHING DIA.		STANDARD BORE SIZES STOCKED		LENGTH UNDER HEAD	HEAD THICKNESS
	A	INCH	B		C	D
			INCH	MM		
CNC 86-12LBF	1 1/4	32	3/8, 1/2, 5/8, 3/4, 7/8, 1	10, 12, 16, 20, 25	2 13/16	5/8
CNC 86-03LBF	1 1/2	40	3/8, 1/2, 5/8, 3/4, 7/8, 1, 1 1/4	10, 12, 16, 20, 25, 32	3 5/32	5/8
CNC 86-05LBF	2	50	1/2, 5/8, 3/4, 7/8, 1, 1 1/4, 1 1/2, 1 3/4	12, 16, 20, 25, 32, 40, 45	3 3/4	3/4

*Special sizes available to fit your machine specifications: inch-metric, metric-inch, or metric-metric.

*All Orders ship standard in inch sizes. If required; please specify metric O.D. or I.D., when ordering.

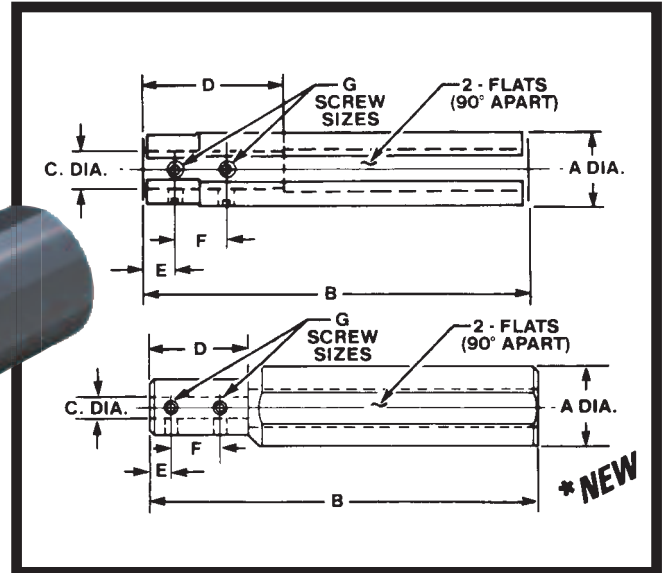




Boring Bar Sleeves

CNC Boring Bar Sleeves are universally used to adapt all Boring Bar or shank type tools to any CNC Turning Machines and Machining Centers for extensions or hard to reach areas. They are hardened, precision ground, concentric, and black oxidized for long lasting protection. Select the O.D. size, length, and ID size from the chart below.

*This NEW innovative design on the 1½ O.D. boring bar sleeves helps the tools stay cool longer by projecting the coolant directly on the cutting edge.



CNC PART NUMBER	DIMENSIONS							SCREW SIZE	
	A		B	C		D	E		F
	IN.	MM		IN	MM				
CNC 8815	¾	20	5	¼	6	1½	⅝	⅝	10-32
CNC 8816	¾	20	5	⅝	8	1½	⅝	⅝	10-32
CNC 8817	¾	20	5	¾	10	1½	⅝	⅝	10-32
CNC 8818	¾	20	5	½	12	3	⅝	⅝	10-32
CNC 8819	1	25	6	⅝	8	1¼	⅞	⅝	¼-28
CNC 8820	1	25	6	¾	10	1¼	⅞	⅝	¼-28
CNC 8821	1	25	6	½	12	2	⅞	⅝	¼-28
CNC 88125	1¼	32	6½	¾	10	1½	⅝	⅝	¼-28
CNC 88126	1¼	32	6½	½	12	2¼	⅞	⅝	¼-28
CNC 88127	1¼	32	6½	⅝	16	2½	⅞	¾	¼-28
CNC 88128	1¼	32	6½	¾	20	3	⅞	¾	¼-28
CNC 88129	1¼	32	6½	⅞	22	4	⅞	¾	10-32
CNC 88130	1¼	32	6½	1	25	4	⅞	¾	10-32
CNC 8822	1½	40	7	¾	10	2	⅝	⅝	¼-28
CNC 8823	1½	40	7	½	12	2¼	⅞	1⅛	⅝-24
CNC 8824	1½	40	7	⅝	16	2¼	⅞	¾	⅝-24
CNC 8825	1½	40	7	¾	20	2½	⅞	¾	⅝-24
CNC 8826	1½	40	8	⅞	22	3	⅞	¾	¼-28
CNC 8827	1½	40	8	1	25	4	⅞	⅞	¼-28
CNC 8828	1¾	45	8	½	12	2½	⅝	⅝	⅝-24
CNC 8829	1¾	45	8	⅝	16	2½	⅞	1	⅝-24
CNC 8830	1¾	45	8	¾	20	2½	⅞	1	¾-24
CNC 8831	1¾	45	8	⅞	22	2½	⅞	1	¾-24
CNC 8832	1¾	45	8	1	25	2½	⅞	1	¾-24

*New Style!

CNC PART NUMBER	DIMENSIONS							SCREW SIZE	
	A		B	C		D	E		F
	IN.	MM		IN	MM				
CNC 8834	2	50	9	⅝	16	2	⅞	1	⅞-20
CNC 8835	2	50	9	¾	20	2¾	⅞	1	⅞-20
CNC 8833	2	50	9	⅞	22	2	⅞	1	⅞-20
CNC 8836	2	50	9	1	25	3½	⅞	1	½-20
CNC 8837	2	50	9	1¼	32	3	⅝	1	½-20
CNC 8838	2½	65	10	⅝	16	3½	⅞	1	½-20
CNC 8839	2½	65	10	¾	20	3½	⅞	1	½-20
CNC 8840	2½	65	10	1	25	4	⅞	1	½-20
CNC 8841	2½	65	10	1¼	32	4	⅝	1	½-20
CNC 8842	2½	65	10	1½	40	3½	½	1	½-20
CNC 8845	3	80	11½	1	25	4	½	1	½-20
CNC 8843	3	80	11½	1¼	32	3½	½	1	½-20
CNC 8844	3	80	11½	1½	40	4½	½	1	½-20
CNC 8847	3	80	11½	1¾	45	3¾	⅝	1¼	½-20
CNC 8846	3	80	11½	2	50	4½	½	1	½-20
CNC 8850	4	100	14	1½	40	3¾	19/32	1⅞	⅝-18
CNC 8851	4	100	14	1¾	45	3¾	⅝	1⅞	⅝-18
CNC 8852	4	100	14	2	50	3¾	19/32	1¾	⅝-18
CNC 8853	4	100	14	2½	65	4	⅝	2	⅝-18
CNC 8854	4	100	14	3	80	4	¾	1¼	⅝-18

*Special sizes available to fit your machine specifications: inch-metric, metric-inch, or metric-metric.

*All Orders ship standard in inch sizes. If required; please specify metric O.D. or I.D., when ordering.





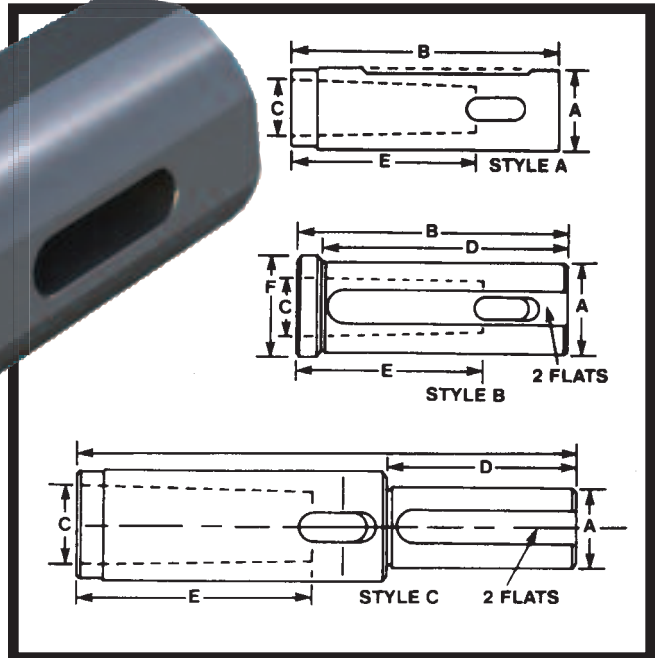
Taper Drill Sockets: Morse Taper

The New Headed Series:

All of our Taper Drill Sockets have been redesigned with a shoulder, as a “B” style, to further insure correct depth of the drilling operation. This new style also provides safety for secondary operations such as boring and reaming. It is held with set screws on two flats so that it will never push back or turn.

Our taper drill sockets are hardened, precision ground, and concentric within .0002 of an inch. They fit directly into tool holders and turrets to positively drive all morse taper shank tools, drills, reamers and counterbores.

The Headless Style “A” Series: straight shank style “A” taper drill sockets are manufactured in limited quantities and sizes. Please contact our courteous sales staff for availability and pricing information. Select the O.D. size that fits your machine and order from the chart below.



CNC PART NUMBER	STYLE	SHANK DIA.		B	MORSED TAPER C	D	E	F
		A						
		INCH	MM					
CNC 86-01#1	A	3/4	20	3 1/4	#1	2 5/16	2 3/16	1
CNC 86-02#1	B	1	25	3 3/4	#1	3 1/8	2 3/16	1 1/4
CNC 86-02#2	B	1	25	3 3/4	#2	3 1/8	2 5/8	1 1/4
CNC 86-03#1	B	1 1/4	32	4	#1	3 3/8	2 3/16	1 1/2
CNC 86-03#2	B	1 1/4	32	4	#2	3 3/8	2 5/8	1 1/2
CNC 86-03#3	B	1 1/4	32	4	#3	4	3 1/4	1 1/2
CNC 86-04#1	B	1 1/2	40	5	#1	4 3/8	2 3/16	1 3/4
CNC 86-04#2	B	1 1/2	40	5	#2	4 3/8	2 5/8	1 3/4
CNC 86-04#3	B	1 1/2	40	5	#3	4 3/8	3 1/4	1 3/4
CNC 86-04#4	B	1 1/2	40	5 3/4	#4	4 3/8	4 1/8	1 3/4
CNC 86-05#1	B	1 3/4	45	5 3/4	#1	5 1/8	2 3/16	2
CNC 86-05#2	B	1 3/4	45	5 3/4	#2	5 1/8	2 5/8	2
CNC 86-05#3	B	1 3/4	45	5 3/4	#3	5 1/8	3 1/4	2
CNC 86-05#4	B	1 3/4	45	5 3/4	#4	4 3/8	4 1/8	2
CNC 86-06#5	C	1 3/4	45	11 1/8	#5	4 1/4	5 1/4	1 3/8

CNC PART NUMBER	STYLE	SHANK DIA.		B	MORSED TAPER C	D	E	F
		A						
		INCH	MM					
CNC 86-07#2	B	2	50	6 1/8	#2	5 1/2	2 5/8	2 1/4
CNC 86-07#3	B	2	50	6 1/8	#3	5 1/2	3 1/4	2 1/4
CNC 86-07#4	B	2	50	6 1/8	#4	5 1/2	4 1/8	2 1/4
CNC 86-08#5	C	2	50	11 1/8	#5	4 1/4	5 1/4	2 3/8
CNC 86-09#2	B	2 1/2	65	5 3/4	#2	5 1/8	2 5/8	2 3/4
CNC 86-09#3	B	2 1/2	65	6 5/8	#3	6	3 1/4	2 3/4
CNC 86-09#4	B	2 1/2	65	6 5/8	#4	6	4 1/8	2 3/4
CNC 86-09#5	B	2 1/2	65	7 5/8	#5	7	5 1/4	2 3/4
CNC 86-11#4	B	3	80	6 5/8	#4	6	4 1/8	3 3/8
CNC 86-12#5	B	3	80	7 5/8	#5	7	5 1/4	3 3/8
CNC 86-13#4	B	2 1/4	60	6 5/8	#4	6	4 1/8	2 1/2
CNC 86-14#5	B	2 1/4	60	7 5/8	#5	7	5 1/4	2 1/2
CNC 86-15#4	B	2 3/4	70	6 5/8	#4	6	4 1/8	3
CNC 86-16#5	B	2 3/4	70	7 5/8	#5	7	5 1/4	3

*Special sizes available to fit your machine specifications: inch-metric, metric-inch, or metric-metric.

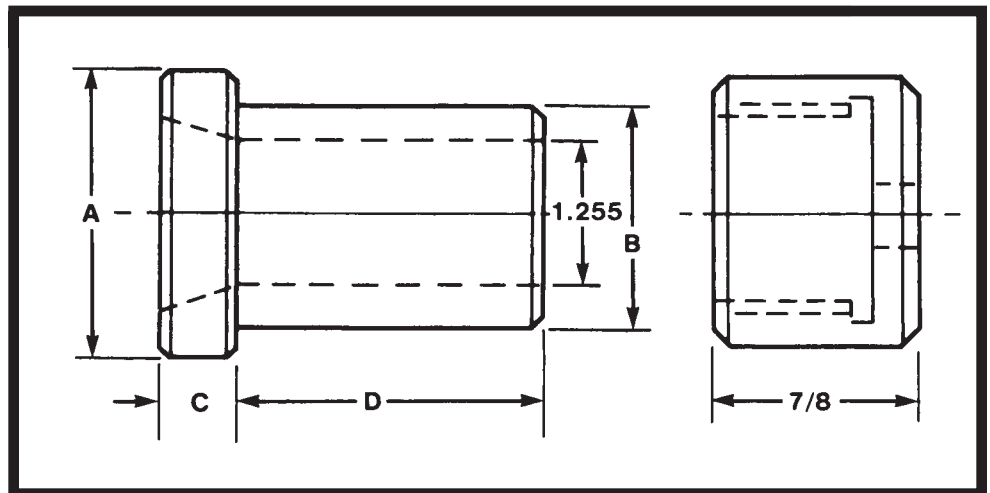
*All Orders ship standard in inch sizes. If required; please specify metric O.D. or I.D., when ordering.





“5C” Collet Holder Bushing

This brand new 5C Collet Holder Bushing is used to adapt all kinds of Drills, Reamers, Counter Bores and End Mills to your CNC machines. Adds flexibility, versatility and reduces set-up time. Includes back locking nut and screw to hold your 5C Collet in place.



CNC PART NUMBER	A	B		C	D	OD NUT SIZE
		INCH	MM			
CNC 885C 1½	2	1½	40	½	2¼	1¾/₆₄
CNC 885C 1¾	2¼	1¾	45	½	2¼	1¹¹/₁₆
CNC 885C 2	2½	2	50	½	2¼	1¹⁹/₁₆
CNC 885C 2½	3	2½	65	½	2¼	2 ⁷/₁₆

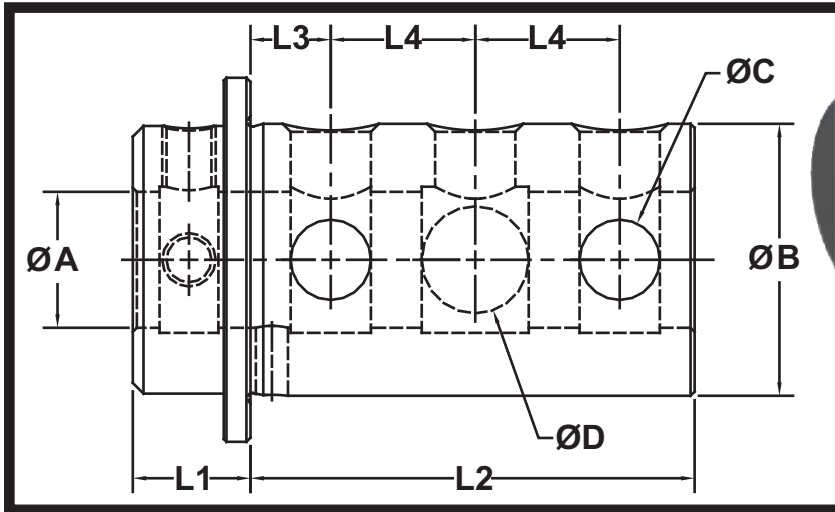
Special sizes available to fit your machine specifications: inch-metric, metric-inch, or metric-metric.
All Orders ship standard in inch sizes. If required; please specify metric O.D. or I.D., when ordering.





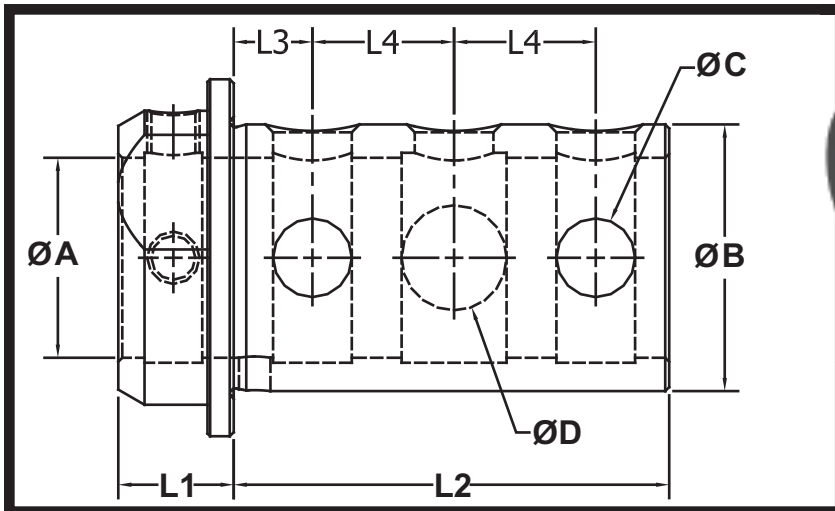
New Bushing

BUSHING



PART NUMBER	D ₁	Ø _A	Ø _B	L ₁	L ₂	L ₃	L ₄	Ø _C	Ø _D
86-15MZ8H	1/2	.500	2.000	22	83	15	27	15	20
86-15MZ8H	5/8	.625	2.000	22	83	15	27	15	20
86-15MZ8H	3/4	.750	2.000	22	83	15	27	15	20
86-15MZ8H	7/8	.875	2.000	22	83	15	27	15	20
86-15MZ8H	1	1.000	2.000	22	83	15	27	15	20
86-15MZ8H	1 1/4	1.250	2.000	22	83	15	27	15	20

New Bushings



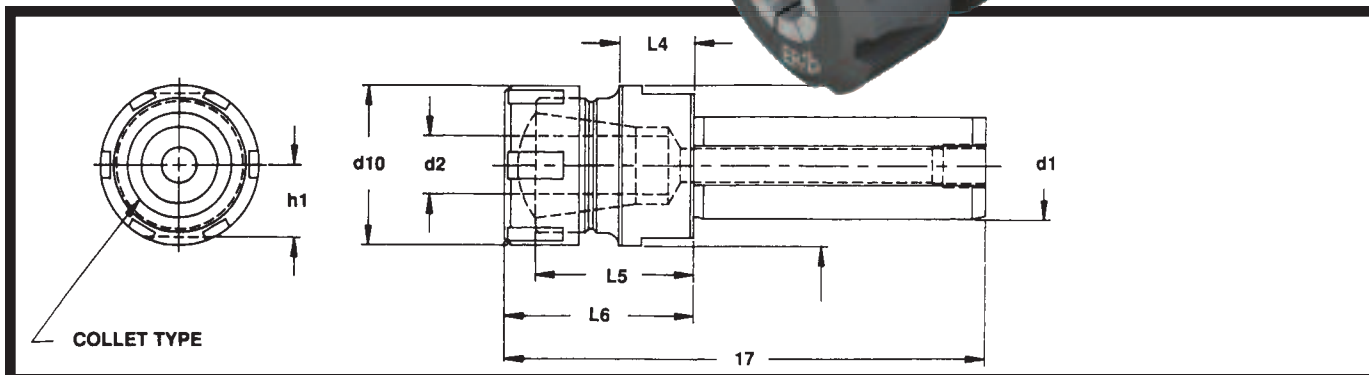
PART NUMBER	D ₁	Ø _A	Ø _B	L ₁	L ₂	L ₃	L ₄	Ø _C	Ø _D
86-15MZ8H	1 1/2	1.500	2.000	22	83	15	27	15	20
86-15MZ8H	1 3/4	1.750	2.000	22	83	15	27	15	20





Collet Chuck; Straight Shank ER & TG Style

Extremely versatile Universal Toolholder
Designed to hold your ER Collets. One
Toolholder can hold a variety of sized
tools!



CNC PART	d ₁	d ₂ inch	d ₂ metric	d ₆	d ₁₀	L ₄	L ₅	L ₆	L ₇	h ₁	COLLET TYPE
CNC 56.2025	3/4	1/16-5/8	1-16	40	42	18	38	50	108	17	ER25
CNC 56.2032	3/4	3/32-3/4	2-20	50	50	18	48	60	118	23.4	ER32
CNC 56.2040	3/4	1/8-1	3-25	50	63	34	52	66	121.5	23.4	ER40
CNC 56.2525	1	1/16-5/8	1-16	40	42	18	38	50	108	17	ER25
CNC 56.2532	1	3/32-3/4	2-20	50	50	18	48	60	118	23.4	ER32
CNC 56.2540	1	1/8-1	3-25	50	63	34	52	66	121.5	23.4	ER40
CNC 56.3225	1 1/4	1/16-5/8	1-16	40	42	18	38	50	120.5	17	ER25
CNC 56.3232	1 1/4	3/32-3/4	2-20	50	50	18	48	60	131	23.4	ER32
CNC 56.3240	1 1/4	1/8-1	3-25	50	63	34	52	66	134	23.4	ER40
CNC 56.4025	1 1/2	1/16-5/8	1-16	50	42	22	63	75	149	22.2	ER25
CNC 56.4032	1 1/2	3/32-3/4	2-20	50	50	18	48	60	134	23.4	ER32
CNC 56.4040	1 1/2	1/8-1	3-25	50	63	34	52	66	137.5	23.4	ER40
CNC 56.4525	1 3/4	1/16-5/8	1-16	60	42	22	63	75	152	25.4	ER25
CNC 56.4532	1 3/4	3/32-3/4	2-20	60	50	18	48	60	137	25.4	ER32
CNC 56.4540	1 3/4	1/8-1	3-25	60	63	34	52	66	140.5	25.4	ER40
CNC 56.5025	2	1/16-5/8	1-16	65	42	22	52	75	164.5	28.6	ER25
CNC 56.5032	2	3/32-3/4	2-20	65	50	22	52	66	153.5	28.6	ER32
CNC 56.5040	2	1/8-1	3-25	65	63	22	52	62	151	28.6	ER40

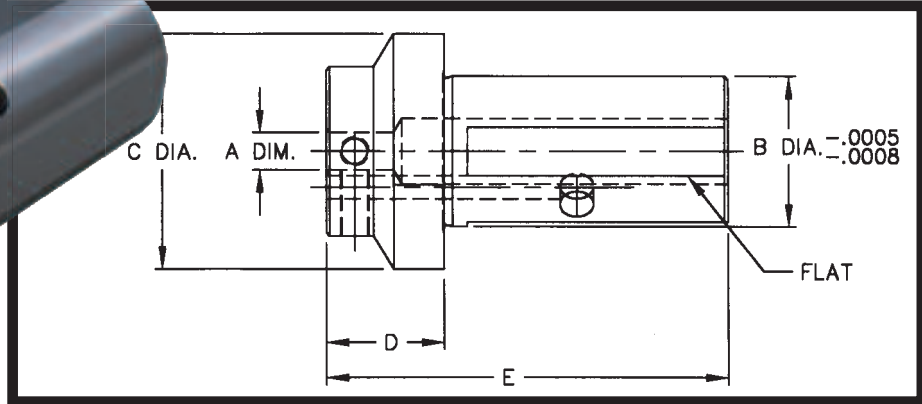
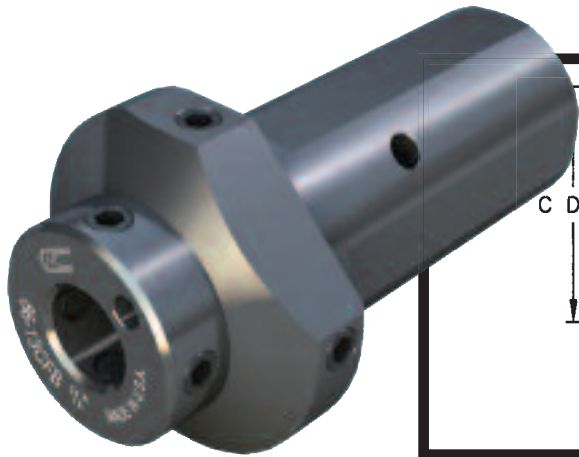
CNC PART	d ₁	d ₂ inch	d ₆	d ₁₀	L ₄	L ₅	L ₆	L ₇	h ₁	COLLET TYPE
CNC 56.2075TG	3/4	3/64-3/4	40	50	40.7	63	77.4	147	17	75TG
CNC 56.20100TG	3/4	3/32-1	50	60	40	64.2	82.1	152	23.4	100TG
CNC 56.2575TG	1	3/64-3/4	40	50	40.7	63	77.4	147	17	75TG
CNC 56.25100TG	1	3/32-1	50	60	40	64.2	82.1	152	23.4	100TG
CNC 56.3275TG	1 1/4	3/64-3/4	40	50	40.7	63	77.4	160	17	75TG
CNC 56.32100TG	1 1/4	3/32-1	50	60	40	64.2	82.1	165	23.4	100TG
CNC 56.4075TG	1 1/2	3/64-3/4	50	50	40.7	63	77.4	163	23.4	75TG
CNC 56.40100TG	1 1/2	3/32-1	50	60	40	64.2	82.1	168	23.4	100TG
CNC 56.4575TG	1 3/4	3/64-3/4	60	50	42	63	77.4	166	25.4	75TG
CNC 56.45100TG	1 3/4	3/32-1	60	60	40	64.2	82.1	171	25.4	100TG
CNC 56.5075TG	2	3/64-3/4	65	50	42	63	77.4	179	28.6	75TG
CNC 56.50100TG	2	3/32-1	65	60	40	39.2	82.1	184	28.6	100TG





Coolant Fed Toolholder Bushing

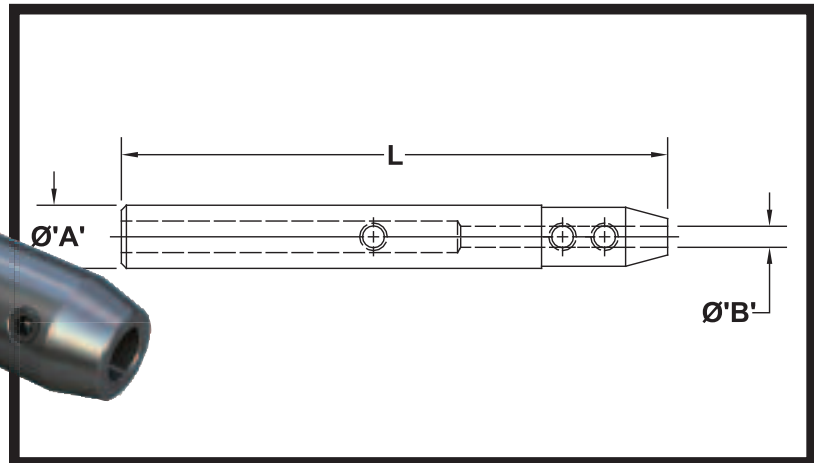
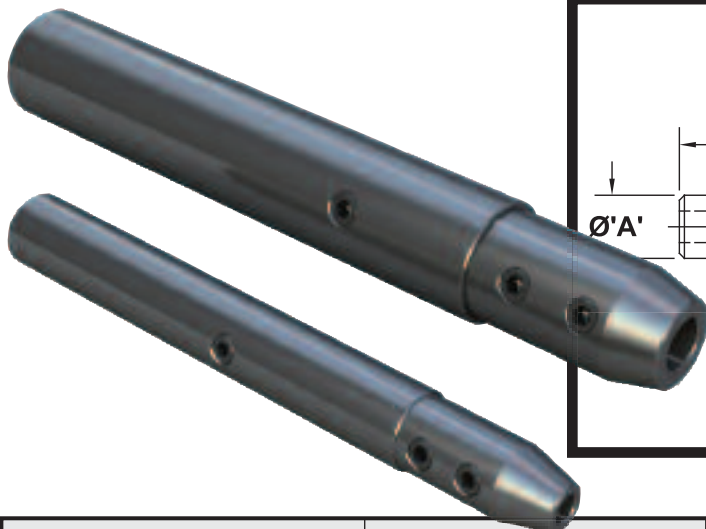
The CNC Type Coolant Fed Bushing is designed for use on applications requiring an External Side Coolant Entry Port. Clamp the Screws from the CNC Machine on the flat and use the Set-screws in the head to clamp directly on the tool allowing for positive alignment of the cutting edge of the tool.



CNC PART NUMBER	STANDARD BORE SIZES STOCKED	BUSHING DIA.	HEAD DIA.	HEAD THICKNESS	OVER ALL LENGTH
	A	B	C	D	E
CNC 86-12CFB	5/16, 3/8, 1/2, 5/8, 3/4, 1	1 1/4	50	25	85
CNC 86-13CFB	5/16, 3/8, 1/2, 5/8, 3/4, 1, 1 1/4	1 1/2	58	30	105

NEW! Small OD Boring Bar Sleeve

You can Now Hold Small ID Tools



CNC Part Number	BUSHING DIA.	STANDARD BORE	OVERALL LENGTH
	A	B	L
CNC S88-01	3/8	3/32	2.250
CNC S88-03	3/8	1/8	3.250
CNC S88-05	1/2	5/32	3.500
CNC S88-07	1/2	3/16	3.500
CNC S88-09	5/8	1/4	4.250

Special sizes available to your machine specifications: inch-metric, metric-inch, or metric-metric.
Please specify inch or metric O.D. or I.D., when ordering.

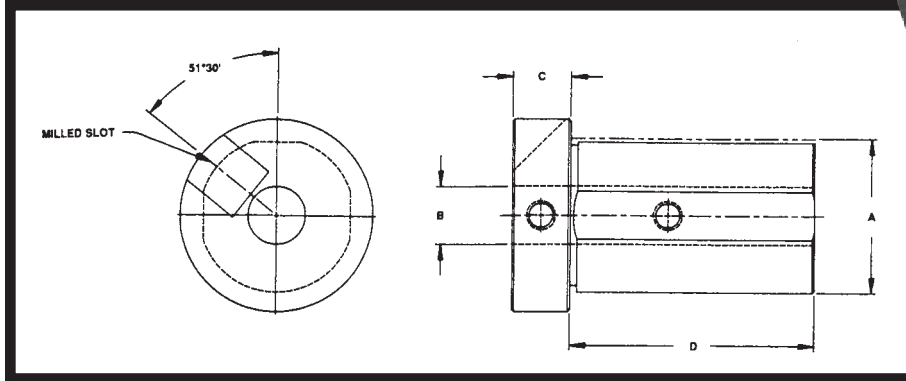
Superior Design/Premium Quality





Mazak Style Toolholder Bushing Style “V”

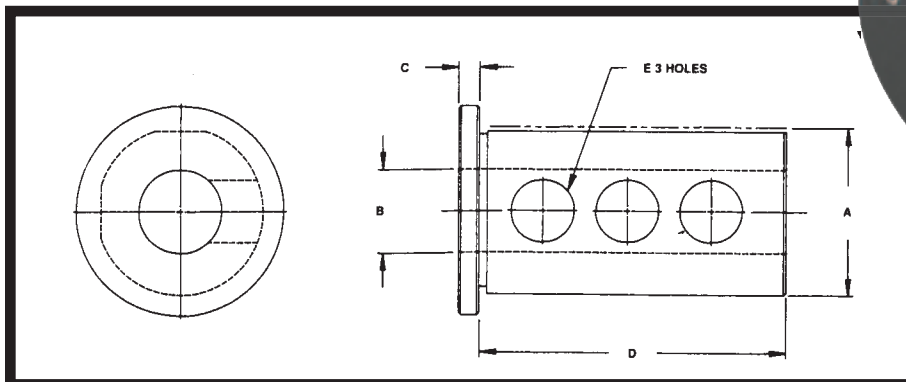
New Mazak Bushings like the ones that came with the machine.
For Mazak Integrex 70Y Machines



CNC PART NUMBER	BUSHING DIA.		STANDARD BORE SIZES STOCKED		SLOT THICKNESS C	LENGTH UNDER HEAD D
	A	50	B			
			INCH	MM		
CNC 86-70V	2	50	1/4, 5/16, 3/8, 1/2, 5/8, 3/4, 1, 1 1/4, 1 1/2	8, 10, 12, 16, 20, 25, 32, 40	3/4	3 5/32

Mazak Style Toolholder Bushing Style “W”

New Mazak Bushings like the ones that came with the machine.
For Mazak Integrex 70Y Machines



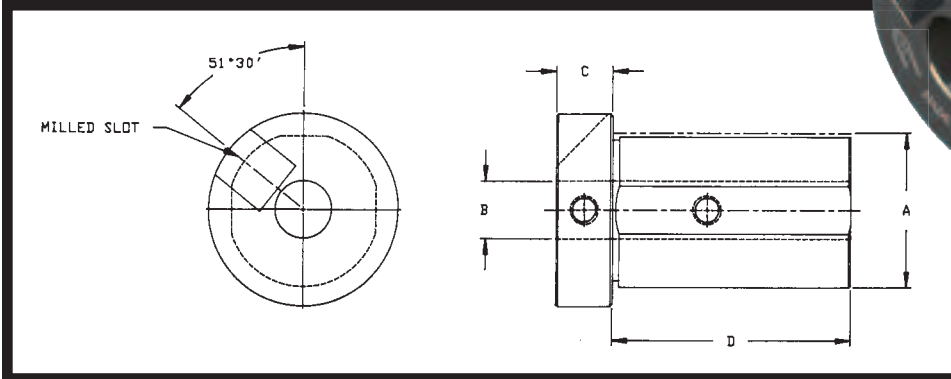
CNC PART NUMBER	BUSHING DIA.		STANDARD BORE SIZES STOCKED		SLOT THICKNESS C	LENGTH UNDERHEAD D	HOLES E
	A	50	B				
			INCH	MM			
CNC 86-70W	2	50	1/2, 5/8, 3/4, 1, 1 1/4, 1 1/2	12, 16, 20, 25, 32, 40	1/4	4	3/4





Mazak Style Toolholder Bushing Style "P"

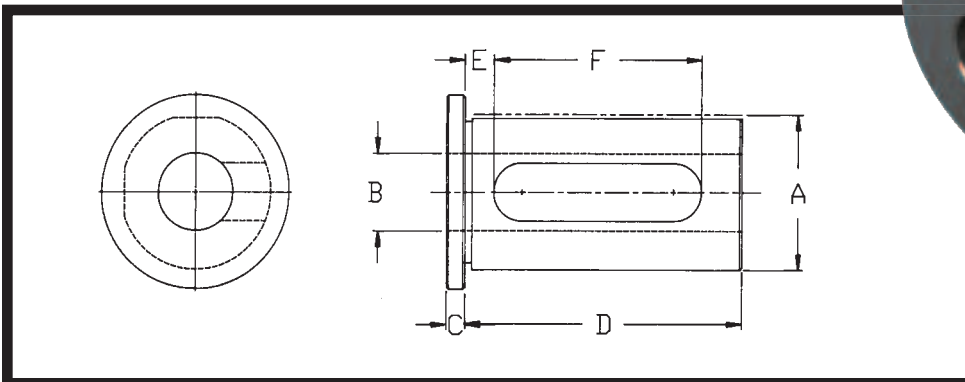
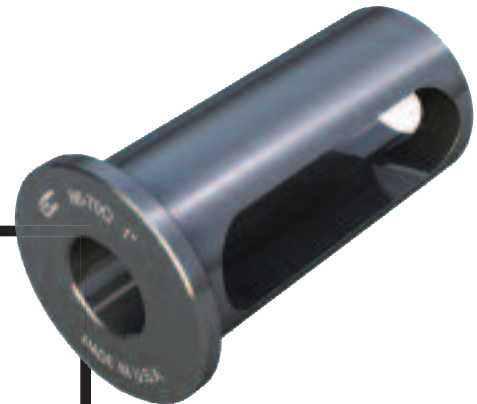
New Mazak Bushings like the ones that came with the machine.
For Mazak Integrex 50Y Machines



CNC PART NUMBER	BUSHING DIA.		STANDARD BORE SIZES STOCKED		SLOT THICKNESS C	LENGTH UNDER HEAD D
	A	50	B			
			INCH	MM		
CNC 86-70P	2	50	1/4, 5/16, 3/8, 1/2, 5/8, 3/4, 1, 1 1/4, 1 1/2	8, 10, 12, 16, 20, 25, 32, 40	3/4	4 1/64

Mazak Style Toolholder Bushing Style "Q"

New Mazak Bushings like the ones that came with the machine.
For Mazak Integrex 50Y Machines



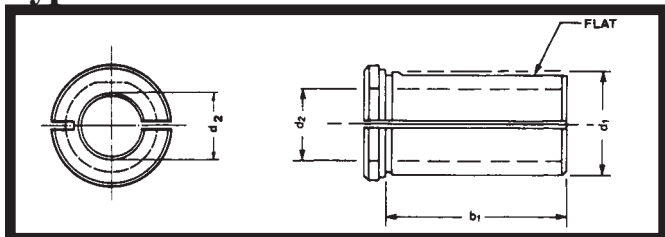
CNC PART NUMBER	BUSHING DIA.		STANDARD BORE SIZES STOCKED		SLOT THICKNESS C	LENGTH UNDER HEAD D	DIM E	LENGTH OF SLOT F
	A	50	B					
			INCH	MM				
CNC 86-70Q	2	50	1/2, 5/8, 3/4, 1, 1 1/4, 1 1/2	12, 16, 20, 25, 32, 40	1/4	4 1/64	5/16	3 3/8





VDI Style Toolholder Bushing

Type "BV"



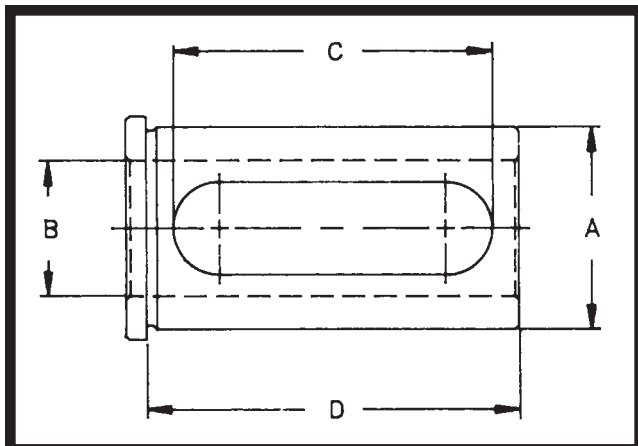
PART NUMBER	d ₁	d ₂ inch	d ₂ metric	b ₁
CNC86 61.2508	25	5/16	8	36
CNC86 61.2510	25	3/8	10	36
CNC86 61.2512	25	1/2	12	36
CNC86 61.2516	25	5/8	16	36
CNC86 61.2520	25	3/4	20	36
CNC86 61.3208	32	5/16	8	46
CNC86 61.3210	32	3/8	10	46
CNC86 61.3212	32	1/2	12	46
CNC86 61.3216	32	5/8	16	46
CNC86 61.3220	32	3/4	20	46
CNC86 61.3225	32	1	25	46

PART NUMBER	d ₁	d ₂ inch	d ₂ metric	b ₁
CNC86 61.4010	40	3/8	10	81
CNC86 61.4012	40	1/2	12	81
CNC86 61.4016	40	5/8	16	81
CNC86 61.4020	40	3/4	20	81
CNC86 61.4025	40	1	25	81
CNC86 61.4032	40	1 1/4	32	81
CNC86 61.5020	50	3/4	20	102
CNC86 61.5025	50	1	25	102
CNC86 61.5032	50	1 1/4	32	102
CNC86 61.5040	50	1 1/2	40	102
CNC86 61.6025	60	1	25	118
CNC86 61.6032	60	1 1/4	32	118
CNC86 61.6040	60	1 1/2	40	118
CNC86 61.6050	60	2	50	118

VDI Style Toolholder Bushing

Type "CV":

Special length to fit your Form E2 Boring Bar Holder



CNC PART NUMBER	BUSHING DIA.		STANDARD BORE SIZES STOCKED		SLOT	LENGTH UNDER HEAD
			B			
	A				C	D
CNC 86-12CV	1.25	32	1/4, 3/8, 1/2, 5/8, 3/4, 7/8, 1	10, 12, 16, 20, 25	50MM	60MM
CNC 86-13CV	1.5	40	1/4, 3/8, 1/2, 5/8, 3/4, 7/8, 1, 1 1/4	10, 12, 16, 20, 25, 32	60MM	70MM





VDI Style Taper Drill Sockets

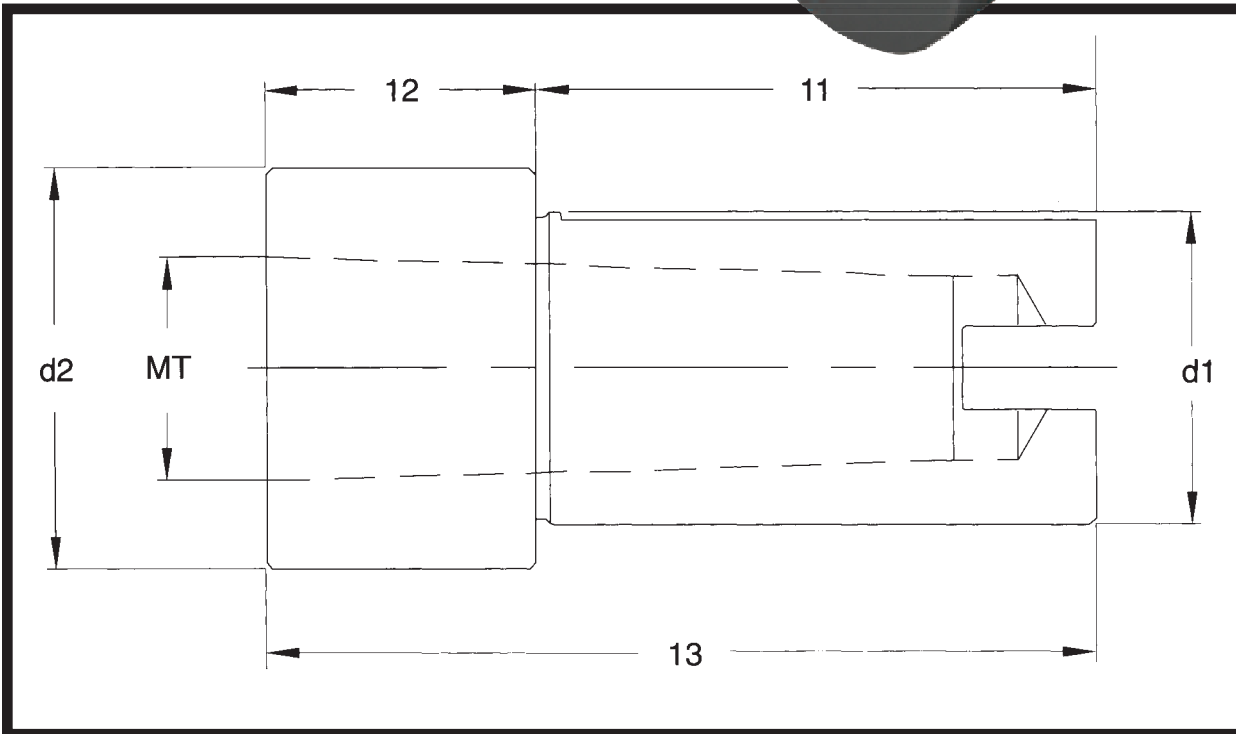
VDI Style

Adapt your VDI Boring Bar Holder into a Morse Taper Holder by adding this inexpensive Bushing.

Save money by using your existing Boring Bar Holder and purchasing this inexpensive Bushing.



BUSHING



PART NUMBER	d, in	d, mm	MT	d ₂	L ₁	L ₂	L ₃
CNC86 64.4073#1	1½	40	1	52	60	16	76
CNC86 64.4073#2	1½	40	2	52	60	16	76
CNC86 64.4073#3	1½	40	3	52	71	43	114
CNC86 64.4073#4	1½	40	4	52	71	43	114
CNC86 64.4083#1	1¾	45	1	57	60	16	76
CNC86 64.4083#2	1¾	45	2	57	60	16	76
CNC86 64.4083#3	1¾	45	3	57	81	33	114
CNC86 64.4083#4	1¾	45	4	57	81	33	114
CNC86 64.4083#5	1¾	45	5	57	81	69	150

PART NUMBER	d, in	d, mm	MT	d ₂	L ₁	L ₂	L ₃
CNC86 64.4583#1	2	50	1	64	60	16	76
CNC86 64.4583#2	2	50	2	64	60	16	76
CNC86 64.4583#3	2	50	3	64	81	33	114
CNC86 64.4583#4	2	50	4	64	81	33	114
CNC86 64.4583#5	2	50	5	64	81	69	150

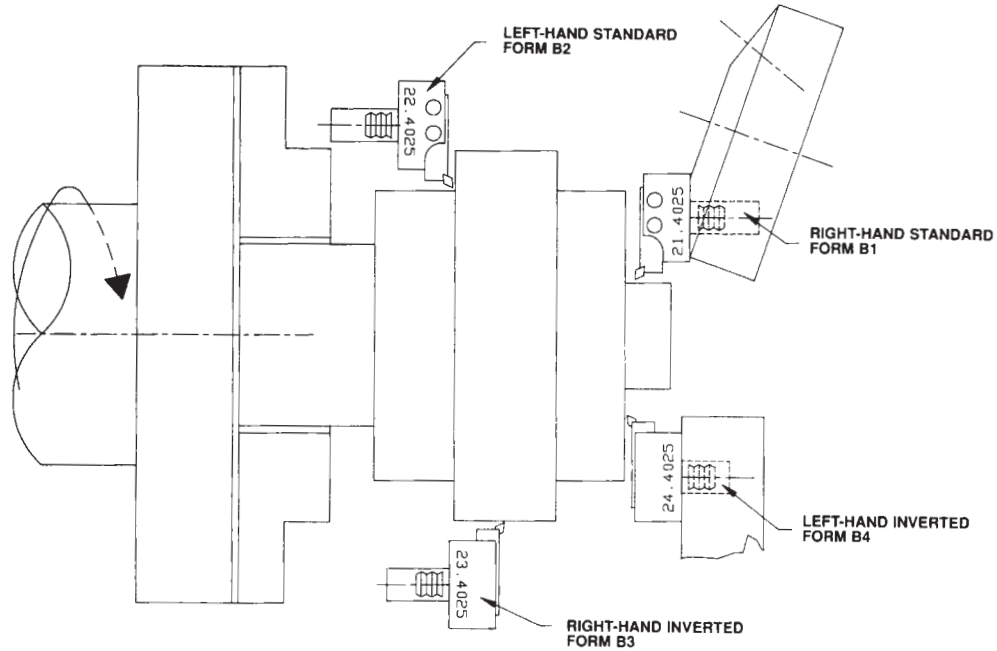




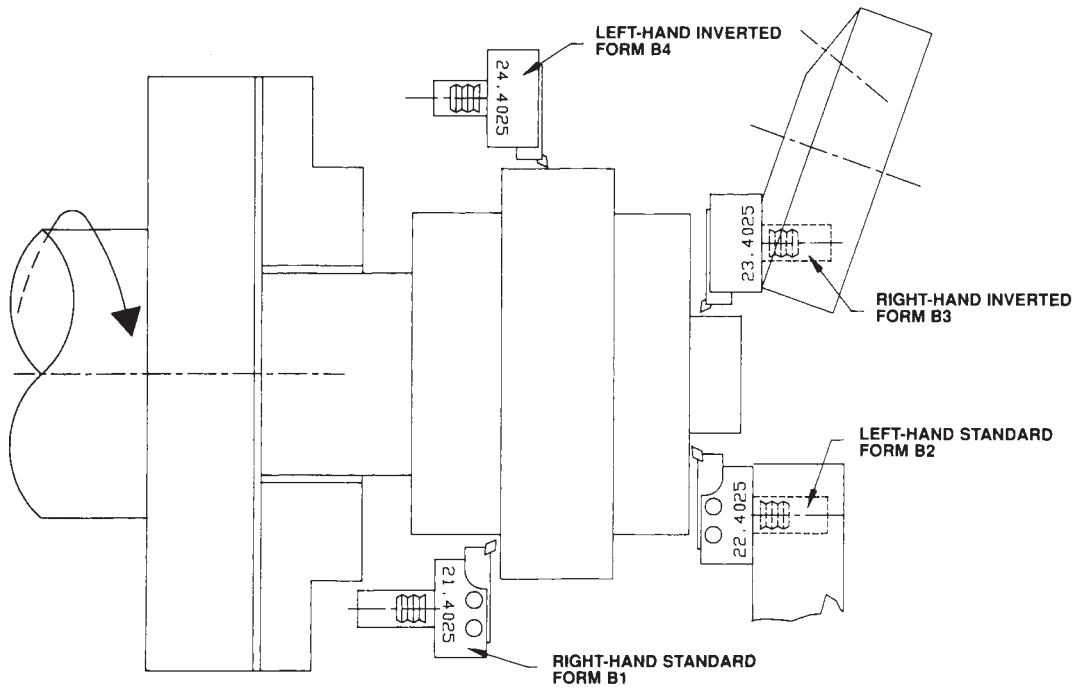
VDI Orientation Chart:

Find the Toolholder you need by referencing this chart.

Left-Hand (Clockwise) Spindle Rotation



Right-Hand (Counter-Clockwise) Spindle Rotation



We Now Repair Driven VDI Tooling Guaranteed!

