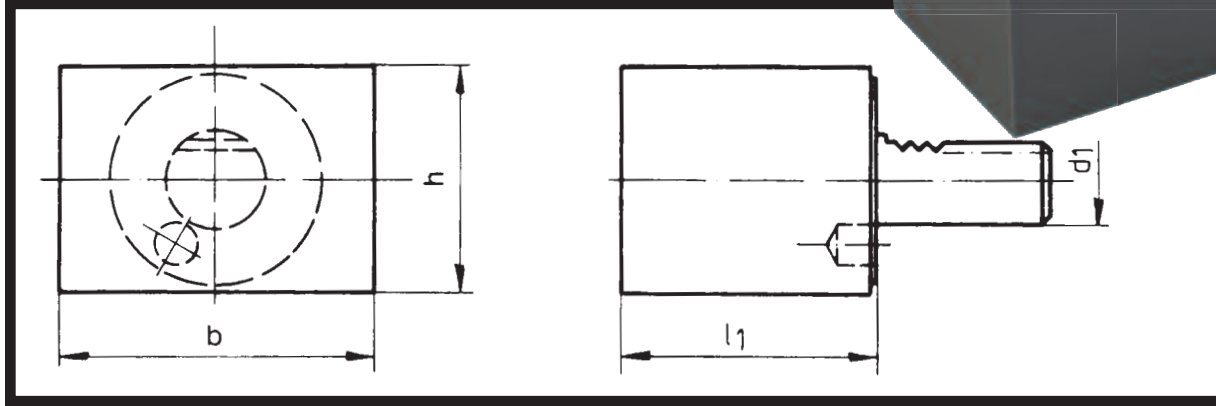
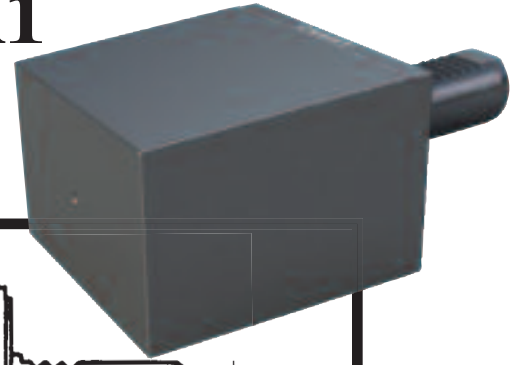




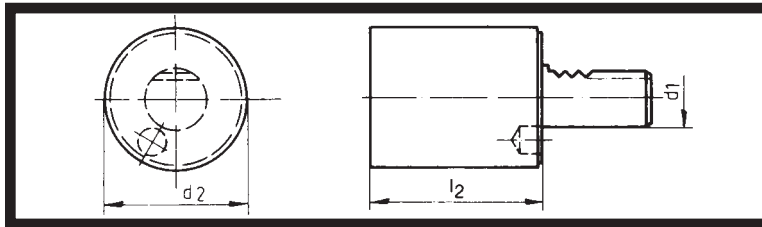
Toolholder Blank – Form A1 Rectangular



PART NUMBER	d ₁	L ₁	b	h
CNC86 B16.44.78.44	16	44	78	44
CNC86 B20.50.60.60	20	50	60	60
CNC86 B20.65.100.60	20	65	100	60
CNC86 B25.75.100.60	25	75	100	60
CNC86 B30.85.130.76	30	85	130	76

PART NUMBER	d ₁	L ₁	b	h
CNC86 B40.100.151.96	40	100	151	96
CNC86 B50.125.160.120	50	125	160	120
CNC86 B60.160.165.125	60	160	165	125
CNC86 B80.200.220.160	80	200	220	160

Toolholder Blank – Form A2 Round



PART NUMBER	d ₁	d ₂	L ₂
CNC86 B16.40.60	16	40	60
CNC86 B20.50.70	20	50	70
CNC86 B20.52.160	20	52	160
CNC86 B25.58.80	25	58	80
CNC86 B25.58.200	25	58	200
CNC86 B30.68.100	30	68	100
CNC86 B30.68.150	30	68	150
CNC86 B30.70.200	30	70	200
CNC86 B30.68.240	30	68	240
CNC86 B40.83.120	40	83	120
CNC86 B40.83.150	40	83	150
CNC86 B40.83.200	40	83	200
CNC86 B40.83.320	40	83	320

PART NUMBER	d ₁	d ₂	L ₂
CNC86 B50.98.135	50	98	135
CNC86 B50.98.220	50	98	220
CNC86 B50.98.400	50	98	400
CNC86 B60.123.150	60	123	150
CNC86 B60.123.250	60	123	250
CNC86 B60.123.480	60	123	480
CNC86 B80.158.XXX	80	158	XXX
CNC86 B80.158.500	80	158	500

Special sizes available to your machine specifications:

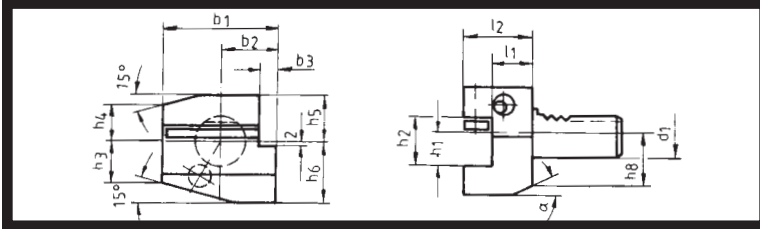
We Now Repair Driven VDI Tooling Guaranteed!





Turning Toolholder – Form B1

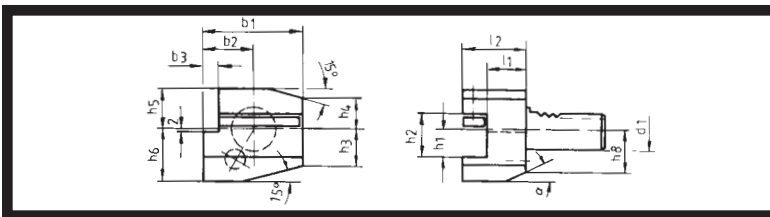
Right-Hand Short



PART NUMBER	d ₁	b ₁	b ₂	b ₃	h ₁ in	h ₁ mm	h ₂	h ₃	h ₄	h ₅	h ₆	h ₈	L ₁	L ₂	α
CNC86 21.1612	16	42	23	5	1/2	12	17	15	15	20	22	18	13	25	30
CNC86 21.1612.1	16	42	23	5	1/2	12	17	15	15	20	22	18	23	35	30
CNC86 21.2016	20	55	30	7	5/8	16	22	19	19	25	30	23	16	31	30
CNC86 21.2016.1	20	55	30	7	5/8	16	22	19	19	25	30	23	26	41	30
CNC86 21.2516	25	55	30	7	5/8	16	22	22.5	22.5	25	30	25	16	31	30
CNC86 21.2516.1	25	55	30	7	5/8	16	22	22.5	22.5	25	30	25	26	41	30
CNC86 21.3020	30	70	35	10	3/4	20	29	26	22	28	38	30	42	40	25
CNC86 21.3020.1	30	70	35	10	3/4	20	29	26	22	28	38	30	42	60	25
CNC86 21.3025	30	70	35	10	1	25	34	28	26	32	48	43	22	47	25
CNC86 21.4025	40	85	42.5	12.5	1	25	34	35	30	32.5	48	42	22	47	30
CNC86 21.5025	50	100	50	16	1	25	34	42	35	35	60		30	55	
CNC86 21.5032	50	100	50	16	1/4	32	41	42	35	35	60		30	61	
CNC86 21.6032	60	125	62.5	16	1/4	32	41	46	42.5	42.5	62.5		30	60	
CNC86 21.8040	80	160	80	20	1 1/2	40	53	60	55	55	80		40	78	

Turning Toolholder – Form B2

Left-Hand Short



PART NUMBER	d ₁	b ₁	b ₂	b ₃	h ₁ in	h ₁ mm	h ₂	h ₃	h ₄	h ₅	h ₆	h ₈	L ₁	L ₂	α
CNC86 22.1612	16	42	23	5	1/2	12	17	15	15	20	22	18	13	25	30
CNC86 22.1612.1	16	42	23	5	1/2	12	17	15	15	20	22	18	23	35	30
CNC86 22.2016	20	55	30	7	5/8	16	22	19	19	25	30	23	16	31	30
CNC86 22.2016.1	20	55	30	7	5/8	16	22	19	19	25	30	23	26	41	30
CNC86 22.2516	25	55	30	7	5/8	16	22	22.5	22.5	25	30	25	16	31	30
CNC86 22.2516.1	25	55	30	7	5/8	16	22	22.5	22.5	25	30	25	26	41	30
CNC86 22.3020	30	70	35	10	3/4	20	29	26	22	28	38	30	42	40	25
CNC86 22.3020.1	30	70	35	10	3/4	20	29	26	22	28	38	30	42	60	25
CNC86 22.3025	30	70	35	10	1	25	34	28	26	32	48	43	22	47	25
CNC86 22.4025	40	85	42.5	12.5	1	25	34	35	30	32.5	48	42	22	47	30
CNC86 22.5025	50	100	50	16	1	25	34	42	35	35	60		30	55	
CNC86 22.5032	50	100	50	16	1/4	32	41	42	35	35	60		30	61	
CNC86 22.6032	60	125	62.5	16	1/4	32	41	46	42.5	42.5	62.5		30	60	
CNC86 22.8040	80	160	80	20	1 1/2	40	53	60	55	55	80		40	78	

Special sizes available to your machine specifications:

We Now Repair Driven VDI Tooling Guaranteed!

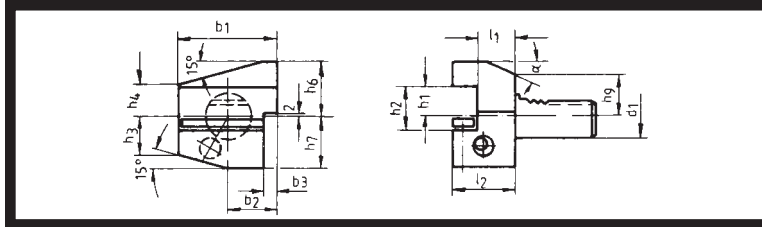
Superior Design/Premium Quality





Turning Toolholder – Form B3

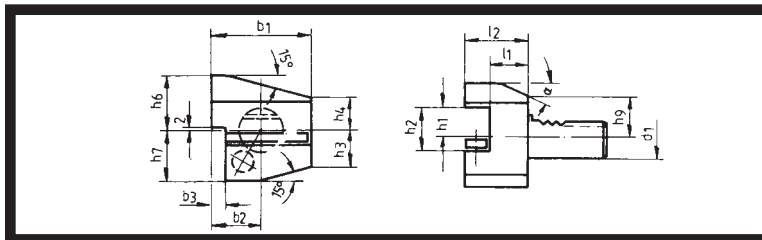
Right-Hand Short-Inverted



PART NUMBER	d ₁	b ₁	b ₂	b ₃	h ₁ in	h ₁ mm	h ₂	h ₃	h ₄	h ₆	h ₇	h ₈	L ₁	L ₂	α
CNC86 23.1612	16	42	23	5	1/2	12	17	15	15	22	20	18	13	25	30
CNC86 23.1612.1	16	42	23	5	1/2	12	17	15	15	22	20	18	23	35	30
CNC86 23.2016	20	55	30	7	5/8	16	22	19	19	30	25	23	16	31	30
CNC86 23.2016.1	20	55	30	7	5/8	16	22	19	19	30	25	23	26	41	30
CNC86 23.2516	25	55	30	7	5/8	16	22	22.5	22.5	30	25	25	16	31	30
CNC86 23.2516.1	25	55	30	7	5/8	16	22	22.5	22.5	30	25	25	26	41	30
CNC86 23.3020	30	70	35	10	3/4	20	29	26	22	38	35	28	22	40	25
CNC86 23.3020.1	30	70	35	10	3/4	20	29	26	22	38	38	30	42	60	25
CNC86 23.3025	30	70	35	10	1	25	34	26	28	48	31	38	22	47	25
CNC86 23.4025	40	85	42.5	12.5	1	25	34	35	30	48	42.5	32.5	22	47	30
CNC86 23.5025	50	100	50	16	1	25	34	42	35	60	50		30	55	
CNC86 23.5032	50	100	50	16	1/4	32	41	42	35	60	50		30	55	
CNC86 23.6032	60	125	62.5	16	1/4	32	41	46	42.5	62.5	62.5		30	61	
CNC86 23.8040	80	160	80	20	1/2	40	53	60	55	80	80		40	78	

Turning Toolholder – Form B4

Left-Hand Short-Inverted



PART NUMBER	d ₁	b ₁	b ₂	b ₃	h ₁ in	h ₁ mm	h ₂	h ₃	h ₄	h ₆	h ₇	h ₈	L ₁	L ₂	α
CNC86 24.1612	16	42	23	5	1/2	12	17	15	15	22	20	18	13	25	30
CNC86 24.1612.1	16	42	23	5	1/2	12	17	15	15	22	20	18	23	35	30
CNC86 24.2016	20	55	30	7	5/8	16	22	19	19	30	25	23	16	31	30
CNC86 24.2016.1	20	55	30	7	5/8	16	22	19	19	30	25	23	26	41	30
CNC86 24.2516	25	55	30	7	5/8	16	22	22.5	22.5	30	25	25	16	31	30
CNC86 24.2516.1	25	55	30	7	5/8	16	22	22.5	22.5	30	25	25	26	41	30
CNC86 24.3020	30	70	35	10	3/4	20	29	26	22	38	35	28	22	40	25
CNC86 24.3020.1	30	70	35	10	3/4	20	29	26	22	38	38	30	42	60	25
CNC86 24.3025	30	70	35	10	1	25	34	26	28	48	31	38	22	47	25
CNC86 24.4025	40	85	42.5	12.5	1	25	34	35	30	48	42.5	32.5	22	47	30
CNC86 24.5025	50	100	50	16	1	25	34	42	35	60	50		30	55	
CNC86 24.5032	50	100	50	16	1/4	32	41	42	35	60	50		30	55	
CNC86 24.6032	60	125	62.5	16	1/4	32	41	46	42.5	62.5	62.5		30	61	
CNC86 24.8040	80	160	80	20	1/2	40	53	60	55	80	80		40	78	

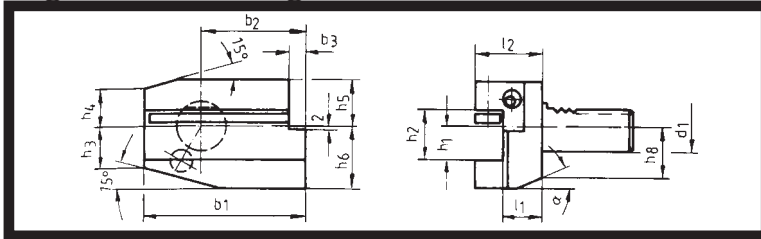
We Now Repair Driven VDI Tooling Guaranteed!





Turning Toolholder – Form B5

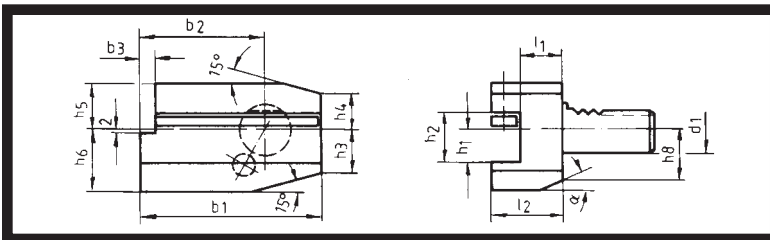
Right-Hand Long



PART NUMBER	d ₁	b ₁	b ₂	b ₃	h ₁ in	h ₁ mm	h ₂	h ₃	h ₄	h ₅	h ₆	h ₈	L ₁	L ₂	α
CNC86 25.1612	16	58	39	5	1/2	12	17	15	15	20	22	18	13	25	30
CNC86 25.1612.1	16	58	39	5	1/2	12	17	15	15	20	22	18	23	35	30
CNC86 25.2016	20	75	50	7	5/8	16	22	19	19	25	30	23	16	31	30
CNC86 25.2016.1	20	75	50	7	5/8	16	22	19	19	25	30	23	26	41	30
CNC86 25.2516	25	75	50	7	5/8	16	22	22.5	22.5	25	30	25	16	31	30
CNC86 25.2516.1	25	75	50	7	5/8	16	22	22.5	22.5	25	30	25	26	41	30
CNC86 25.3020	30	100	65	10	3/4	20	29	26	22	28	38	30	22	40	25
CNC86 25.3020.1	30	100	65	10	3/4	20	29	26	22	28	38	30	42	60	25
CNC86 25.3025	30	100	65	10	1	25	35	33	22	28	45	40	22	47	25
CNC86 25.4025	40	118	75.5	12.5	1	25	34	35	30	32.5	48	42	22	47	30
CNC86 25.5025	50	130	80	16	1	25	34	42	35	35	60		30	55	
CNC86 25.5032	50	130	80	16	1/4	32	41	42	35	35	60		30	61	
CNC86 25.6032	60	145	82.5	16	1/4	32	41	46	42.5	42.5	62.5		30	61	
CNC86 25.8040	80	190	110	20	1 1/2	40	53	60	55	55	80		40	78	

Turning Toolholder – Form B6

Left-Hand Long



PART NUMBER	d ₁	b ₁	b ₂	b ₃	h ₁ in	h ₁ mm	h ₂	h ₃	h ₄	h ₅	h ₆	h ₈	L ₁	L ₂	α
CNC86 26.1612	16	58	39	5	1/2	12	17	15	15	20	22	18	13	25	30
CNC86 26.1612.1	16	58	39	5	1/2	12	17	15	15	20	22	18	23	35	30
CNC86 26.2016	20	75	50	7	5/8	16	22	19	19	25	30	23	16	31	30
CNC86 26.2016.1	20	75	50	7	5/8	16	22	19	19	25	30	23	26	41	30
CNC86 26.2516	25	75	50	7	5/8	16	22	22.5	22.5	25	30	25	16	31	30
CNC86 26.2516.1	25	75	50	7	5/8	16	22	22.5	22.5	25	30	25	26	41	30
CNC86 26.3020	30	100	65	10	3/4	20	29	26	22	28	38	30	22	40	25
CNC86 26.3020.1	30	100	65	10	3/4	20	29	26	22	28	38	30	42	60	25
CNC86 26.3025	30	100	65	10	1	25	35	33	22	28	44	40	22	47	25
CNC86 26.4025	40	118	75.5	12.5	1	25	34	35	30	32.5	48	42	22	47	30
CNC86 26.5025	50	130	80	16	1	25	34	42	35	35	60		30	55	
CNC86 26.5032	50	130	80	16	1/4	32	41	42	35	35	60		30	61	
CNC86 26.6032	60	145	82.5	16	1/4	32	41	46	42.5	42.5	62.5		30	61	
CNC86 26.8040	80	190	110	20	1 1/2	40	53	60	55	55	80		40	78	

We Now Repair Driven VDI Tooling Guaranteed!

Superior Design/Premium Quality



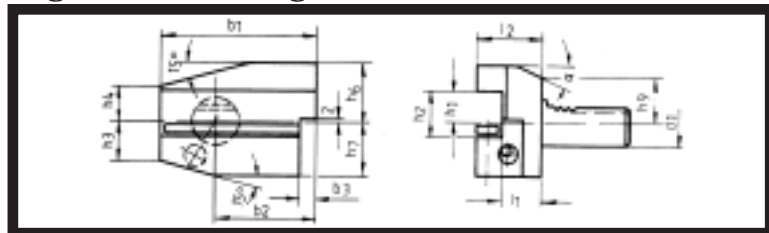
B6

VDI: DIN 69880



Turning Toolholder – Form B7

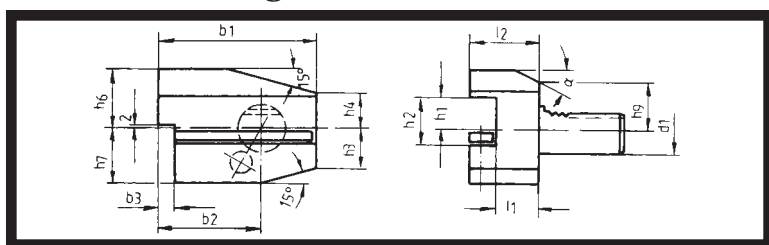
Right-Hand Long-Inverted



PART NUMBER	d ₁	b ₁	b ₂	b ₃	h ₁ in	h ₁ mm	h ₂	h ₃	h ₄	h ₆	h ₇	h ₉	L ₁	L ₂	α
CNC86 27.1612	16	58	39	5	1/2	12	17	15	15	22	20	18	13	24	30
CNC86 27.1612.1	16	58	39	5	1/2	12	17	15	15	22	20	18	23	34	30
CNC86 27.2016	20	75	50	7	5/8	16	22	19	19	30	25	23	16	30	30
CNC86 27.2016.1	20	75	50	7	5/8	16	22	19	19	30	25	23	26	40	30
CNC86 27.2516	25	75	50	7	5/8	16	22	22.5	22.5	30	25	25	16	30	30
CNC86 27.2516.1	25	75	50	7	5/8	16	22	22.5	22.5	30	25	25	26	40	30
CNC86 27.3020	30	100	65	10	3/4	20	29	26	22	38	35	28	22	40	25
CNC86 27.3020.1	30	100	65	10	3/4	20	29	26	22	38	35	28	42	60	25
CNC86 27.3025	30	100	65	10	1	25	34	26	28	44	35	40	22	47	25
CNC86 27.4025	40	118	75.5	12.5	1	25	34	35	30	48	42.5	32.5	30	44	30
CNC86 27.5025	50	130	80	16	1	25	34	42	35	60	50		30	55	
CNC86 27.5032	50	130	80	16	1/4	32	41	42	35	60	50		22	55	
CNC86 27.6032	60	145	82.5	16	1/4	32	41	46	42.5	62.5	62.5	42.5	30	60	
CNC86 27.8040	80	190	110	20	1 1/2	40	53	60	55	80	80		40	75	

Turning Toolholder – Form B8

Left-Hand Long-Inverted



PART NUMBER	d ₁	b ₁	b ₂	b ₃	h ₁ in	h ₁ mm	h ₂	h ₃	h ₄	h ₆	h ₇	h ₉	L ₁	L ₂	α
CNC86 28.1612	16	58	39	5	1/2	12	17	15	15	22	20	18	13	24	30
CNC86 28.1612.1	16	58	39	5	1/2	12	17	15	15	22	20	18	23	34	30
CNC86 28.2016	20	75	50	7	5/8	16	22	19	19	30	25	23	16	30	30
CNC86 28.2016.1	20	75	50	7	5/8	16	22	19	19	30	25	23	26	40	30
CNC86 28.2516	25	75	50	7	5/8	16	22	22.5	22.5	30	25	25	16	30	30
CNC86 28.2516.1	25	75	50	7	5/8	16	22	22.5	22.5	30	25	25	26	40	30
CNC86 28.3020	30	100	65	10	3/4	20	29	26	22	38	35	28	22	40	25
CNC86 28.3020.1	30	100	65	10	3/4	20	29	26	22	38	35	28	42	60	25
CNC86 28.3025	30	100	65	10	1	25	34	35	30	48	42	40	22	47	25
CNC86 28.4025	40	118	75.5	12.5	1	25	34	42	35	60	50	32.5	22	44	
CNC86 28.5025	50	130	80	16	1	25	34	42	35	60	50		30	55	
CNC86 28.5032	50	130	80	16	1/4	32	41	42	35	60	50		30	55	30
CNC86 28.6032	60	145	82.5	16	1/4	32	41	46	42.5	62.5	62.5		30	60	
CNC86 28.8040	80	190	110	20	1 1/2	40	53	60	55	80	80		40	75	

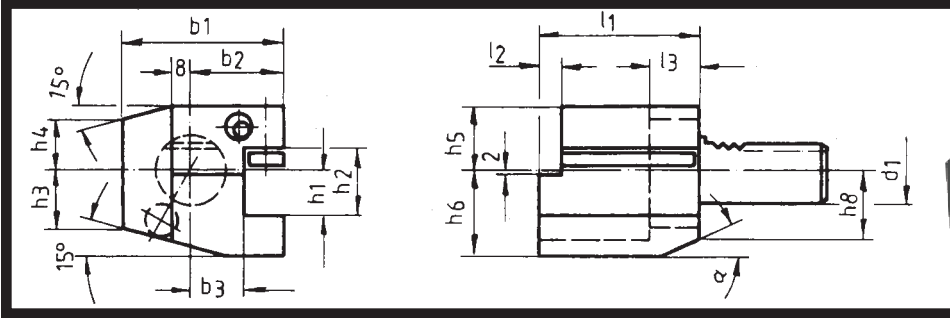
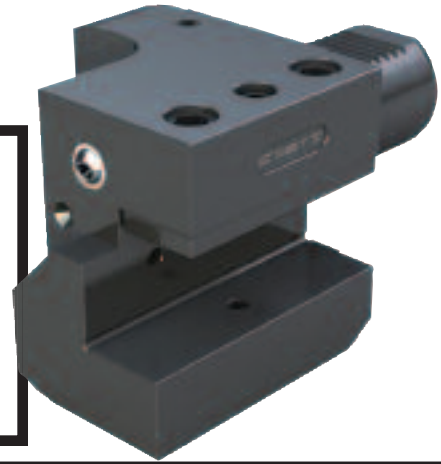
We Now Repair Driven VDI Tooling Guaranteed!





Turning Toolholder – Form C1

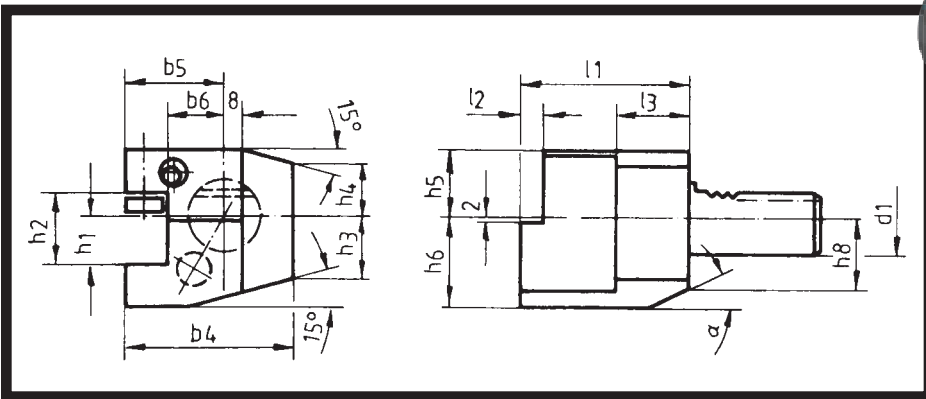
Square Tool Right-Hand



PART NUMBER	d ₁	b ₁	b ₂	b ₃	h ₁ in	h ₁ mm	h ₂	h ₃	h ₄	h ₅	h ₆	h ₈	L ₁	L ₂	L ₃	α
CNC86 31.1612	16	43	24	13	1/2	12	17	15	15	20	22	18	44	5	20	30
CNC86 31.2016	20	52	27	13	5/8	16	22	19	19	25	30	23	55	7	30	30
CNC86 31.2016.1	20	65	40	26	5/8	16	22	19	19	25	30	23	55	7	30	30
CNC86 31.2516	25	58	33	19	5/8	16	22	22.5	22.5	25	30	25	55	7	30	30
CNC86 31.3020	30	70	35	17	3/4	20	29	26	22	28	38	30	70	10	30	25
CNC86 31.3025	30	77	42	17	1	25	34	32	22	25	48	40	70	10	30	25
CNC86 31.4025	40	85	42.5	20.5	1	25	34	35	30	32.5	48	42	85	12.5	30	30
CNC86 31.5025	50	100	50	26	1	25	34	42	35	35	60		100	16	40	
CNC86 31.5032	50	100	50	25.5	1.25	32	41	42	35	35	60		100	16	40	
CNC86 31.6032	60	125	62.5	32.5	1.25	32	41	46	42.5	42.5	62.5		125	16	40	
CNC86 31.8040	80	160	80	41	1.5	40	53	60	55	55	80		160	20	40	

Turning Toolholder – Form C2

Square Tool Left-Hand



PART NUMBER	d ₁	b ₄	b ₅	b ₆	h ₁ in	h ₁ mm	h ₂	h ₃	h ₄	h ₅	h ₆	h ₈	L ₁	L ₂	L ₃	α
CNC86 32.1612	16	43	24	13	1/2	12	17	15	15	20	22	18	44	5	20	30
CNC86 32.2016	20	65	40	26	5/8	16	22	19	19	25	30	23	55	7	30	30
CNC86 32.2516	25	58	33	19	5/8	16	22	22.5	22.5	25	30	25	55	7	30	30
CNC86 32.3020	30	76	41	23	3/4	20	29	26	22	28	38	30	70	10	30	30
CNC86 32.4025	40	93	50.5	25.5	1	25	34	35	30	32.5	48	42	85	12.5	30	25
CNC86 32.5032	50	105	55	30.5	1.25	32	41	42	35	35	60		100	16	40	30
CNC86 32.6032	60	125	62.5	32.5	1.25	32	41	46	42.5	42.5	62.5		125	16	40	
CNC86 32.8040	80	160	80	41	1.5	40	53	60	55	55	80		160	20	40	

We Now Repair Driven VDI Tooling Guaranteed!

Superior Design/Premium Quality

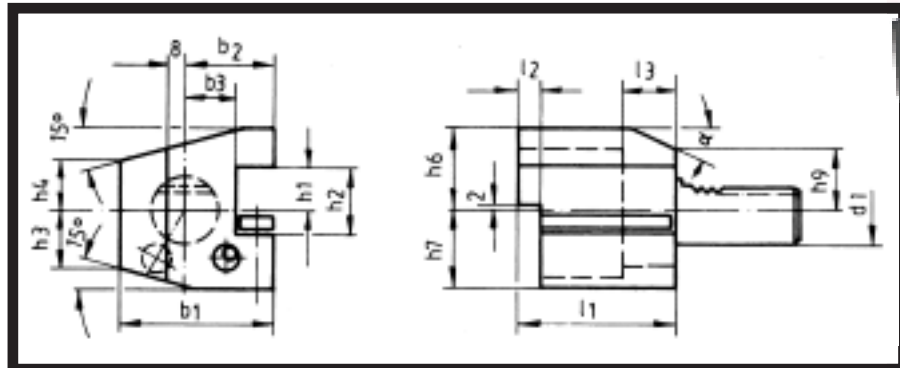


VDI: DIN 69880



Turning Toolholder – Form C3

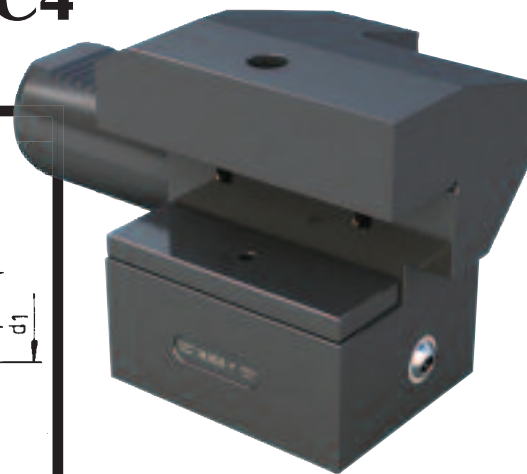
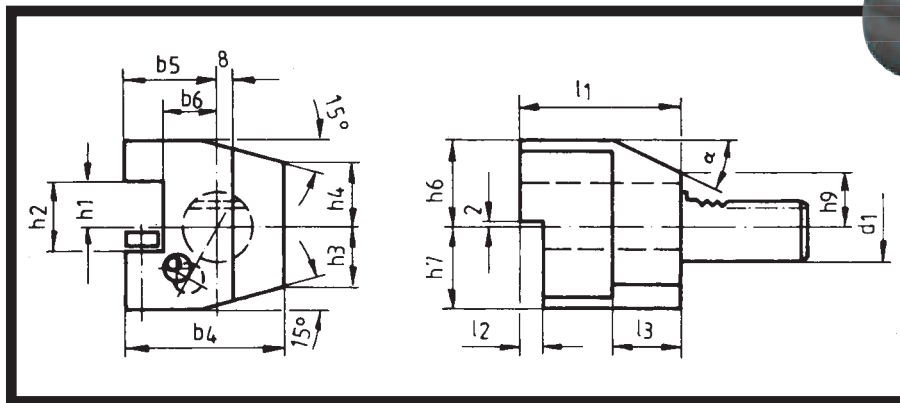
Square Tool Right-Hand Inverted



PART NUMBER	d ₁	b ₁	b ₂	b ₃	h ₁ , in	h ₁ , mm	h ₂	h ₃	h ₄	h ₆	h ₇	h ₉	L ₁	L ₂	L ₃	α
CNC86 33.1612	16	43	24	13	1/2	12	17	15	15	22	20	18	44	5	20	30
CNC86 33.2016	20	52	27	13	5/8	16	22	19	19	30	25	23	55	7	30	30
CNC86 33.2016.1	20	65	40	26	5/8	16	22	19	19	30	25	23	55	7	30	30
CNC86 33.2516	25	58	33	19	5/8	16	22	22.5	22.5	30	25	25	55	7	30	30
CNC86 33.3020	30	70	35	17	3/4	20	29	26	22	38	35	28	70	10	30	25
CNC86 33.4025	40	85	42.5	20.5	1	25	34	35	30	48	42.5	42	85	12.5	30	30
CNC86 33.5032	50	100	50	25.5	1.25	32	41	42	35	60	50		100	16	40	
CNC86 33.6032	60	125	62.5	32.5	1.25	32	41	46	42.5	62.5	62.5		125	16	40	
CNC86 33.8040	80	160	80	41	1.5	40	53	60	55	80	80		160	20	40	

Turning Toolholder – Form C4

Square Tool Left-Hand Inverted



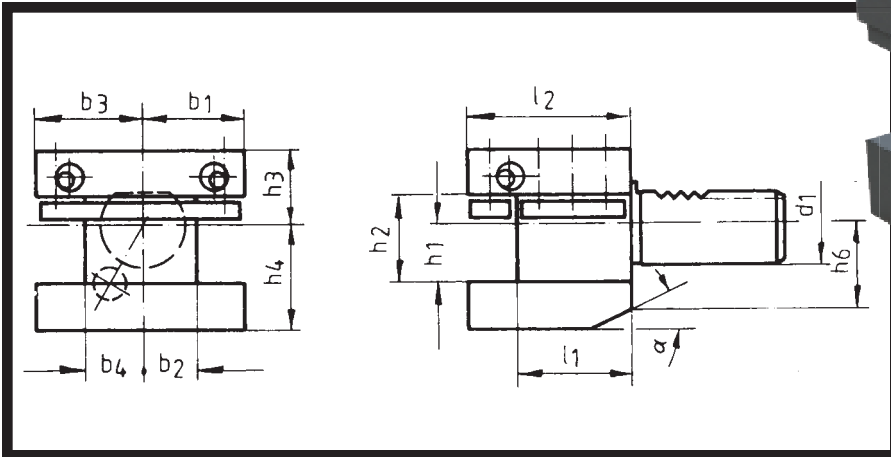
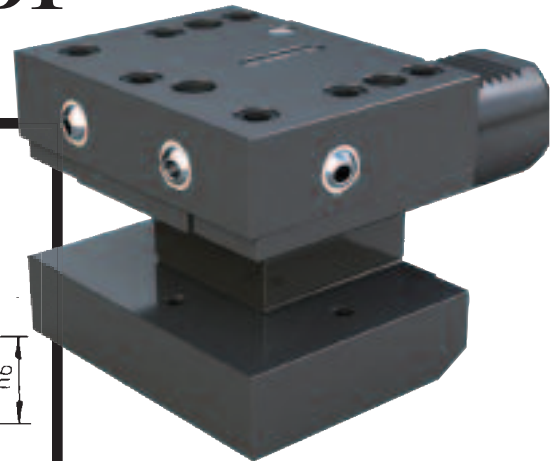
PART NUMBER	d ₁	b ₁	b ₂	b ₃	h ₁ , in	h ₁ , mm	h ₂	h ₃	h ₄	h ₆	h ₇	h ₉	L ₁	L ₂	L ₃	α
CNC86 34.1612	16	43	24	13	1/2	12	17	15	15	22	20	18	44	5	20	30
CNC86 34.2016	20	65	40	26	5/8	16	22	19	19	30	25	23	55	7	30	30
CNC86 34.2516	25	58	33	19	5/8	16	22	22.5	22.5	30	25	25	55	7	30	30
CNC86 34.3020	30	76	41	23	3/4	20	29	26	22	38	35	28	70	10	30	25
CNC86 34.4025	40	90	47.5	25.5	1	25	34	35	30	48	42.5	42	85	12.5	30	30
CNC86 34.5032	50	105	55	30.5	1.25	32	41	42	35	60	50		100	16	40	
CNC86 34.6032	60	125	62.5	32.5	1.25	32	41	46	42.5	62.5	62.5		125	16	40	
CNC86 34.8040	80	160	80	41	1.5	40	53	60	55	80	80		160	20	40	

We Now Repair Driven VDI Tooling Guaranteed!



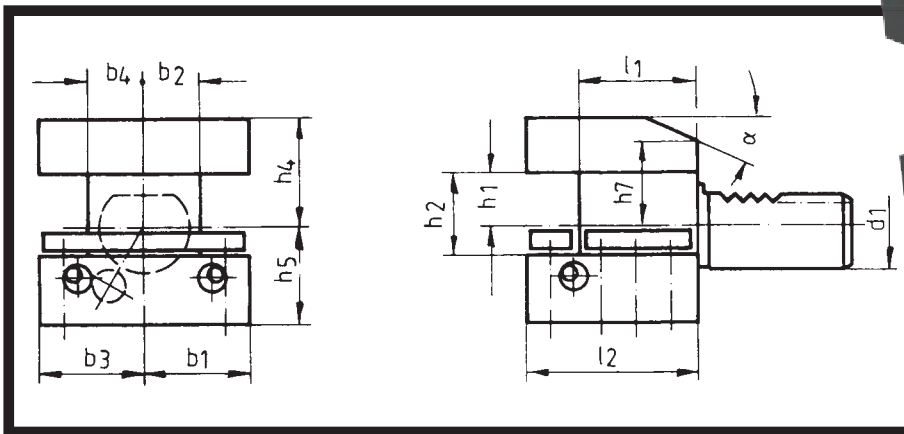


Square Toolholder – Form D1



PART NUMBER	d ₁	h ₁ in	h ₁ mm	b ₁	b ₂	b ₃	b ₄	h ₂	h ₃	h ₄	h ₆	L ₁	L ₂	α
CNC86 41.2516	25	5/8	16	33	19	33	19	22	25	30	25	34	48	30°
CNC86 41.3020	30	3/4	20	35	17	41	23	29	28	38	30	42	60	25°
CNC86 41.4025	40	1	25	42.5	20.5	47.5	25.5	34	32.5	48	42	50	72	30°
CNC86 41.5032	50	1 1/4	32	50	25.5	55	30.5	41	35	60		60	85	
CNC86 41.6032	60	1 1/4	32	57.5	32.5	57.5	32.5	41	42.5	62.5		85	110	
CNC86 41.8040	80	1 1/2	40	76	41	76	41	53	55	80		105	140	

Square Toolholder Inverted – Form D2



PART NUMBER	d ₁	h ₁ in	h ₁ mm	b ₁	b ₂	b ₃	b ₄	h ₂	h ₄	h ₅	h ₇	L ₁	L ₂	α
CNC86 42.2516	25	5/8	16	33	19	33	19	22	30	25	25	34	48	30°
CNC86 42.3020	30	3/4	20	35	17	41	23	29	38	35	28	42	60	25°
CNC86 42.4025	40	1	25	42.5	20.5	47.5	25.5	34	48	42.5	32.5	50	72	30°
CNC86 42.5032	50	1 1/4	32	50	25.5	55	30.5	41	60	50		60	85	
CNC86 42.6032	60	1 1/4	32	57.5	32.5	57.5	32.5	41	62.5	62.5		85	110	
CNC86 42.8040	80	1 1/2	40	76	41	76	41	53	80	80		105	140	

We Now Repair Driven VDI Tooling Guaranteed!

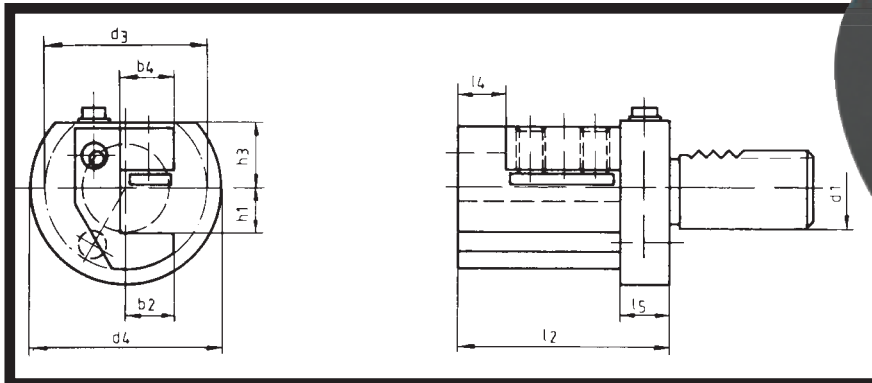
Superior Design/Premium Quality





Axial Toolholder

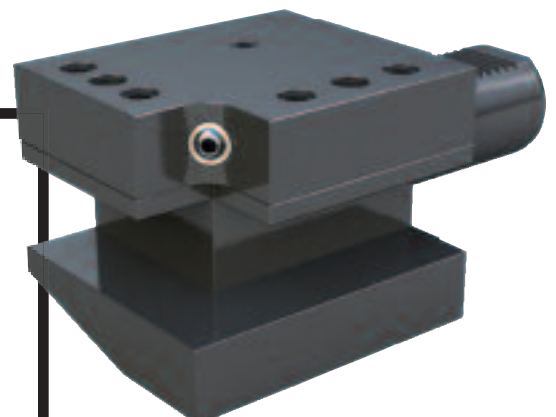
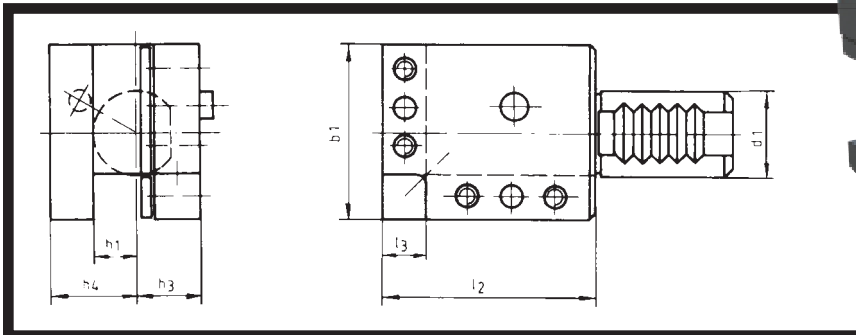
Right-Hand or Left-Hand



PART NUMBER	d ₁	h ₁ , in	h ₁ , mm	h ₃	b ₂	b ₄	L ₂	L ₄	L ₅
CNC86 35.3016R	30	5/8	16	28	16	16	70	16	14
CNC86 35.3016L	30	5/8	16	28	16	16	70	16	14
CNC86 35.4020R	40	3/4	20	32.5	20	20	100	20	16
CNC86 35.4020L	40	3/4	20	32.5	20	20	100	20	16
CNC86 35.5025R	50	1	25	35	25	25	120	25	28
CNC86 35.5025L	50	1	25	35	25	25	120	25	28
CNC86 35.6032R	60	1 1/4	32	42.5	20	32	120	15	28
CNC86 35.6032L	60	1 1/4	32	42.5	20	32	120	15	28

Radial-Axial Toolholder

Right-Hand or Left-Hand



PART NUMBER	d ₁	h ₁ , in	h ₁ , mm	L ₂	L ₃	b ₁	h ₃	h ₄
CNC86 36.3020R	30	3/4	20	70	18	70	28	38
CNC86 36.3020L	30	3/4	20	70	18	76	28	38
CNC86 36.4025R	40	1	25	103	25	85	32.5	48
CNC86 36.4025L	40	1	25	103	25	88	32.5	48
CNC86 36.5032R	50	1 1/4	32	126	31	105	35	60
CNC86 36.5032L	50	1 1/4	32	126	31	111	35	60
CNC86 36.6032R	60	1 1/4	32	138	31	125	42.5	62.5
CNC86 36.6032L	60	1 1/4	32	138	31	125	42.5	62.5
CNC86 36.8040R	80	1 1/2	40	140	35	160	55	80
CNC86 36.8040L	80	1 1/2	40	140	35	160	55	80

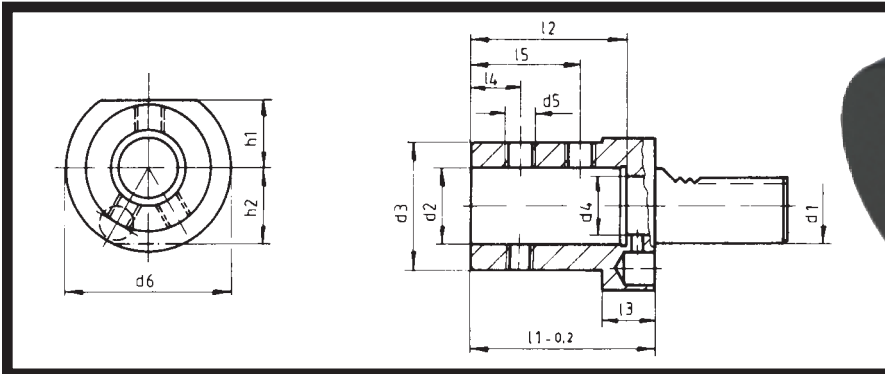
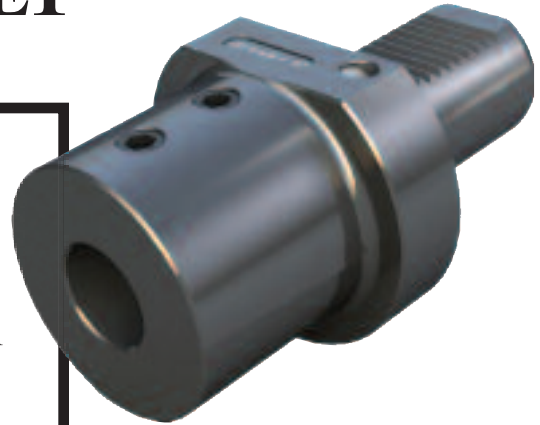
We Now Repair Driven VDI Tooling Guaranteed!





Boring Bar Holder – Form E1

Internal Coolant Flow



PART NUMBER	d ₁	d ₂ in	d ₂ mm	d ₃	d ₄	d ₅	d ₆	h ₁	h ₂	L ₁	L ₂	L ₃	L ₄	L ₅
CNC86 51.2016	20	5/8	16	48	12	3/8-16	50	23	23	67	54	18	15	35°
CNC86 51.2020	20	3/4	20	48	12	3/8-16	50	23	23	67	54	18	15	35°
CNC86 51.2025	20	1	25	48	17	3/8-16	50	23	23	71	59	18	17	40°
CNC86 51.2516	25	5/8	16	41	12	3/8-16	58	25	25	67	54	18	15	35°
CNC86 51.2520	25	3/4	20	44	12	3/8-16	58	25	25	67	54	18	15	35°
CNC86 51.2525	25	1	25	45	17	3/8-16	58	25	25	71	59	18	17	40°
CNC86 51.2532	25	1 1/4	32	50	24	1/2-13	60	25	25	80	63	22	15	38°
CNC86 51.3008	30	5/16	8	46	6	1/4-20	68	28	30	67	54	22	15	34°
CNC86 51.3012	30	1/2	12	46	10	1/4-20	68	28	30	67	54	22	15	34°
CNC86 51.3016	30	5/8	16	46	12	3/8-16	68	28	30	67	54	22	15	35°
CNC86 51.3020	30	3/4	20	50	12	3/8-16	68	28	30	67	54	22	15	35°
CNC86 51.3025	30	1	25	55	17	3/8-16	68	28	30	71	59	22	17	40°
CNC86 51.3032	30	1 1/4	32	62	24	3/8-16	68	28	30	75	63	22	20	44°
CNC86 51.3040	30	1 1/2	40	66	32	5/8-11	68	28	30	90	73	22	22	50°
CNC86 51.4016	40	5/8	16	54	12	3/8-16	83	32.5		67	54	22	15	35°
CNC86 51.4020	40	3/4	20	54	12	3/8-16	83	32.5		67	54	22	15	35°
CNC86 51.4025	40	1	25	63	17	3/8-16	83	32.5		75	59	22	17	40°
CNC86 51.4032	40	1 1/4	32	69	24	3/8-16	83	32.5		75	63	22	20	44°
CNC86 51.4040	40	1 1/2	40	76	32	5/8-11	83	32.5		90	73	22	22	54°
CNC86 51.4045	40	1 3/4	45	83	40	5/8-11	83	32		100	83		24	60°
CNC86 51.4050	40	2	50	81	32	5/8-11	83	32.5		100	83	22	24	60°
CNC86 51.5020	50	3/4	20	57	12	3/8-16	98	35		67	54	30	15	35°
CNC86 51.5025	50	1	25	63	17	3/8-16	98	35		80	59	30	17	40°
CNC86 51.5032	50	1 1/4	32	69	24	3/8-16	98	35		80	63	30	20	44°
CNC86 51.5040	50	1 1/2	40	76	32	5/8-11	98	35		100	73	30	22	54°
CNC86 51.5050	50	2	50	88	42	5/8-11	98	35		100	83	30	24	60°
CNC86 51.6020	60	3/4	20	57	12	3/8-16	123	42.5		80	54	30	15	35°
CNC86 51.6025	60	1	25	63	17	3/8-16	123	42.5		80	59	30	17	40°
CNC86 51.6032	60	1 1/4	32	69	24	3/8-16	123	42.5		80	63	30	20	44°
CNC86 51.6040	60	1 1/2	40	76	32	5/8-11	123	42.5		100	73	30	22	54°
CNC86 51.6045	60	1 3/4	45	83	40	5/8-11	123	42		100	83	30	22	54°
CNC86 51.6050	60	2	50	89	40	5/8-11	123	42.5		100	83	30	24	60°
CNC86 51.6065	60	2 1/2	65	89	40	5/8-18	123	42		100	83	30	22	54°
CNC86 51.8020	80	3/4	20	57	12	3/8-16	158	55		80	54	40	15	35°
CNC86 51.8025	80	1	25	63	17	3/8-16	158	55		80	59	40	17	40°
CNC86 51.8032	80	1 1/4	32	69	24	3/8-16	158	55		80	63	40	20	44°
CNC86 51.8040	80	1 1/2	40	76	32	1/2-13	158	55		100	73	40	22	54°
CNC86 51.8050	80	2	50	88	42	1/2-13	158	55		100	83	40	24	60°

We Now Repair Driven VDI Tooling Guaranteed!

Superior Design/Premium Quality

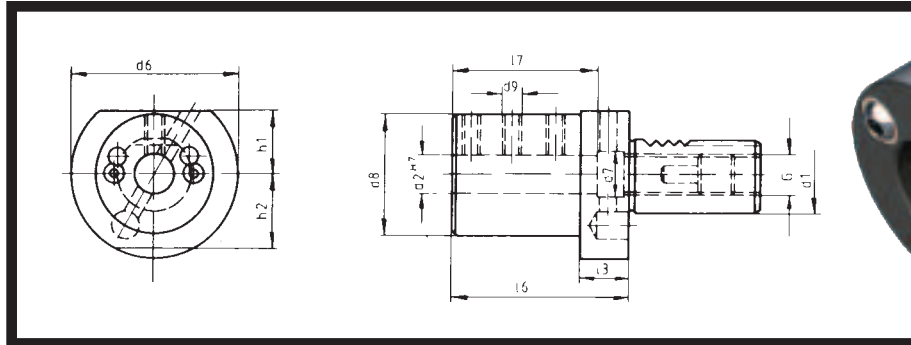


VDI: DIN 69880



Boring Bar Holder – Form E2

Dual External Coolant Flow



VDI: DIN 69880

PART NUMBER	d ₁	d ₂ in	d ₂ mm	d ₆	d ₇	d ₈	d ₆	h ₁	h ₂	L ₃	L ₆	L ₇	G
CNC86 52.1606	16	1/4	6	40	7	40	10-32	18	18	13	44	34	5/16-24
CNC86 52.1608	16	5/16	8	45	7	40	10-32	18	18	13	44	34	5/16-24
CNC86 52.1610	16	3/8	10	45	7	40	10-32	18	18	13	44	34	5/16-24
CNC86 52.1612	16	1/2	12	45	7	40	1/4-28	18	18	13	44	34	5/16-24
CNC86 52.1616	16	5/8	16	45	7	40	1/4-28	18	18	13	44	34	5/16-24
CNC86 52.2008	20	9/16	8	50	9	40	10-24	23	23	18	50	41	3/8-16
CNC86 52.2010	20	3/8	10	50	9	40	10-24	23	23	18	50	41	3/8-16
CNC86 52.2012	20	1/2	12	50	9	40	1/4-20	23	23	18	50	41	3/8-16
CNC86 52.2016	20	5/8	16	50	9	40	1/4-20	23	23	18	50	41	3/8-16
CNC86 52.2020	20	3/4	20	50	9	50	1/4-20	23	23	18	50	41	3/8-16
CNC86 52.2025	20	1	25	50	9	50	1/4-20	23	23	18	60	51	3/8-16
CNC86 52.2508	25	9/16	8	58	12.5	40	1/4-20	25	25	18	50	41	3/8-16
CNC86 52.2510	25	3/8	10	58	12.5	40	1/4-20	25	25	18	50	41	3/8-16
CNC86 52.2512	25	1/2	12	58	12.5	40	1/4-20	25	25	18	50	41	3/8-16
CNC86 52.2516	25	5/8	16	58	12.5	40	1/4-20	25	25	18	50	41	3/8-16
CNC86 52.2520	25	3/4	20	58	12.5	58	1/4-20	25	25	18	50	41	3/8-16
CNC86 52.2525	25	1	25	58	12.5	58	1/4-20	25	25	18	60	51	3/8-16
CNC86 52.3006	30	1/4	6	68	14	55	10-32	28	30	22	60	51	5/8-18
CNC86 52.3008	30	5/16	8	68	16.5	55	1/4-20	28	30	22	60	51	5/8-11
CNC86 52.3010	30	3/8	10	68	16.5	55	1/4-20	28	30	22	60	51	5/8-11
CNC86 52.3012	30	1/2	12	68	16.5	55	1/4-20	28	30	22	60	51	5/8-11
CNC86 52.3016	30	5/8	16	68	16.5	55	1/4-20	28	30	22	60	51	5/8-11
CNC86 52.3020	30	3/4	20	68	16.5	55	1/4-20	28	30	22	60	51	5/8-11
CNC86 52.3025	30	1	25	68	16.5	55	1/4-20	28	30	22	60	51	5/8-11
CNC86 52.3032	30	1 1/4	32	68	16.5	68	3/8-16	28	30	22	75	61	5/8-11
CNC86 52.3040	30	1 1/2	40	83	41	74	1/2-13	32	30	22	90	74	5/8-18
CNC86 52.4008	40	9/16	8	83	20.5	55	1/4-20	32.5		22	75	61	5/8-11
CNC86 52.4010	40	3/8	10	83	20.5	55	1/4-20	32.5		22	75	61	5/8-11
CNC86 52.4012	40	1/2	12	83	20.5	55	3/8-16	32.5		22	75	61	5/8-11
CNC86 52.4016	40	5/8	16	83	20.5	55	3/8-16	32.5		22	75	61	5/8-11
CNC86 52.4020	40	3/4	20	83	20.5	55	3/8-16	32.5		22	75	61	5/8-11
CNC86 52.4025	40	1	25	83	20.5	55	1/2-13	32.5		22	75	61	5/8-11
CNC86 52.4032	40	1 1/4	32	83	20.5	83	1/2-13	32.5		22	75	61	5/8-11
CNC86 52.4040	40	1 1/2	40	83	20.5	83	1/2-13	32.5		22	90	76	5/8-11
CNC86 52.4045	40	1 3/4	45	83	46	74	1/2-13	32		22	90	74	5/8-18
CNC86 52.4050	40	2	50	83	51	83	1/2-13	32			100	86	5/8-18
CNC86 52.5012	50	1/2	12	98	26.5	68	3/8-16	35		30	90	76	5/8-11
CNC86 52.5016	50	5/8	16	98	26.5	68	3/8-16	35		30	90	76	5/8-11
CNC86 52.5020	50	3/4	20	98	26.5	68	1/2-13	35		30	90	76	5/8-11
CNC86 52.5025	50	1	25	98	26.5	68	1/2-13	35		30	90	76	5/8-11
CNC86 52.5032	50	1 1/4	32	98	26.5	68	1/2-13	35		30	90	76	5/8-11
CNC86 52.5040	50	1 1/2	40	98	26.5	98	1/2-13	35		30	90	76	5/8-11
CNC86 52.5045	50	1 3/4	45	98	46	95	1/2-13	35		30	90	76	5/8-18
CNC86 52.5050	50	2	50	98	26.5	98	1/2-13	35		30	100	86	5/8-18
CNC86 52.5065	50	2 1/2	65	102	66	102	1/2-13	42			108	86	5/8-18
CNC86 52.6016	60	5/8	16	123	40.5	68	3/8-16	42.5		30	90	76	3/4-16
CNC86 52.6020	60	3/4	20	123	40.5	68	1/2-13	42.5		30	90	76	5/16-16
CNC86 52.6025	60	1	25	123	40.5	68	1/2-13	42.5		30	90	76	3/4-16
CNC86 52.6032	60	1 1/4	32	123	40.5	68	1/2-13	42.5		30	90	76	3/4-16
CNC86 52.6040	60	1 1/2	40	123	40.5	98	1/2-13	42.5		30	90	76	3/4-16
CNC86 52.6050	60	2	50	123	40.5	98	1/2-13	42.5		30	100	86	3/4-16
CNC86 52.6065	60	2 1/2	65	123	66	108	1/2-13	42		30	100	86	5/8-18
CNC86 52.8020	80	3/4	20	158	40.5	68	1/2-13	55		30	100	86	5/8-18
CNC86 52.8025	80	1	25	158	40.5	68	1/2-13	55		30	100	86	3/4-16
CNC86 52.8032	80	1 1/4	32	158	40.5	68	1/2-13	55		30	100	86	3/4-16
CNC86 52.8040	80	1 1/2	40	158	40.5	98	1/2-13	55		30	100	86	3/4-16
CNC86 52.8050	80	2	50	158	40.5	98	1/2-13	55		30	100	86	3/4-16
CNC86 52.8065	80	2 1/2	65	158	66	98	1/2-13	55		40	100	80	3/4-16

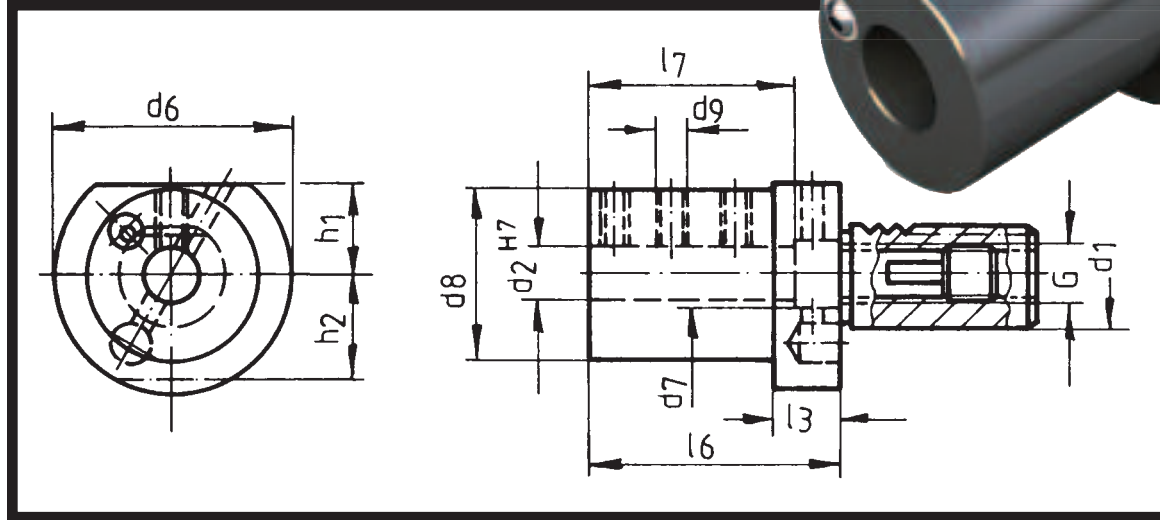
We Now Repair Driven VDI Tooling Guaranteed!





Boring Bar Holder – Form E4

External Single Coolant Flow



PART NUMBER	d ₁	d ₂ in	d ₂ mm	d ₆	d ₇	d ₈	d ₉	h ₁	h ₂	L ₃	L ₆	L ₇	G
CNC86 54.3008	30	5/16	8	68	16.5	55	1/4-20	28	30	22	85	70	5/8-11
CNC86 54.3010	30	3/8	10	68	16.5	55	5/16-18	28	30	22	85	70	5/8-11
CNC86 54.3012	30	1/2	12	68	16.5	55	5/16-18	28	30	22	85	70	5/8-11
CNC86 54.3016	30	5/8	16	68	16.5	55	3/8-16	28	30	22	85	70	5/8-11
CNC86 54.3020	30	3/4	20	68	16.5	55	3/8-16	28	30	22	85	70	5/8-11
CNC86 54.3025	30	1	25	68	16.5	55	1/2-13	28	30	22	85	70	5/8-11
CNC86 54.3032	30	1 1/4	32	68	16.5	55	1/2-13	28	30	30	85	70	5/8-11
CNC86 54.3040	30	1 1/2	40	68	41	73	1/2-13	28	30	22	85	70	5/8-18
CNC86 54.4008	40	5/16	8	83	20.5	55	1/4-20	32.5		22	95	80	5/8-11
CNC86 54.4010	40	3/8	10	83	20.5	55	5/16-18	32.5		22	95	80	5/8-11
CNC86 54.4012	40	1/2	12	83	20.5	55	3/8-16	32.5		22	95	80	5/8-11
CNC86 54.4016	40	5/8	16	83	20.5	55	3/8-16	32.5		22	95	80	5/8-11
CNC86 54.4020	40	3/4	20	83	20.5	55	3/8-16	32.5		22	95	80	5/8-11
CNC86 54.4025	40	1	25	83	20.5	55	1/2-13	32.5		22	95	80	5/8-11
CNC86 54.4032	40	1 1/4	32	83	20.5	55	1/2-13	32.5		30	95	80	5/8-11
CNC86 54.4040	40	1 1/2	40	83	20.5	70	1/2-13	32.5		30	95	80	5/8-11
CNC86 54.5012	50	1/2	12	98	26.5	68	3/8-16	35		30	95	78	5/8-11
CNC86 54.5016	50	5/8	16	98	26.5	68	3/8-16	35		30	95	78	5/8-11
CNC86 54.5020	50	3/4	20	98	26.5	68	1/2-13	35		30	95	78	5/8-11
CNC86 54.5025	50	1	25	98	26.5	68	1/2-13	35		30	95	78	5/8-11
CNC86 54.5032	50	1 1/4	32	98	26.5	68	1/2-13	35		30	95	78	5/8-11
CNC86 54.5040	50	1 1/2	40	98	26.5	68	1/2-13	35		30	95	78	5/8-11
CNC86 54.5045	50	1 3/4	45	98	46	89	1/2-13	35		30	95	78	5/8-18
CNC86 54.5050	50	2	50	98	51	89	1/2-13	35		30	95	78	5/8-18
CNC86 54.6016	60	5/8	16	123	40.5	68	1/2-13	42.5		30	100	83	3/4-16
CNC86 54.6020	60	3/4	20	123	40.5	68	1/2-13	42.5		30	100	83	3/4-16
CNC86 54.6025	60	1	25	123	40.5	68	1/2-13	42.5		30	100	83	3/4-16
CNC86 54.6032	60	1 1/4	32	123	40.5	68	1/2-13	42.5		30	100	83	3/4-16
CNC86 54.6040	60	1 1/2	40	123	40.5	80	1/2-13	42.5		30	100	83	3/4-16
CNC86 54.6050	60	2	50	123	51	95	1/2-13	42		30	100	83	5/8-18

We Now Repair Driven VDI Tooling Guaranteed!

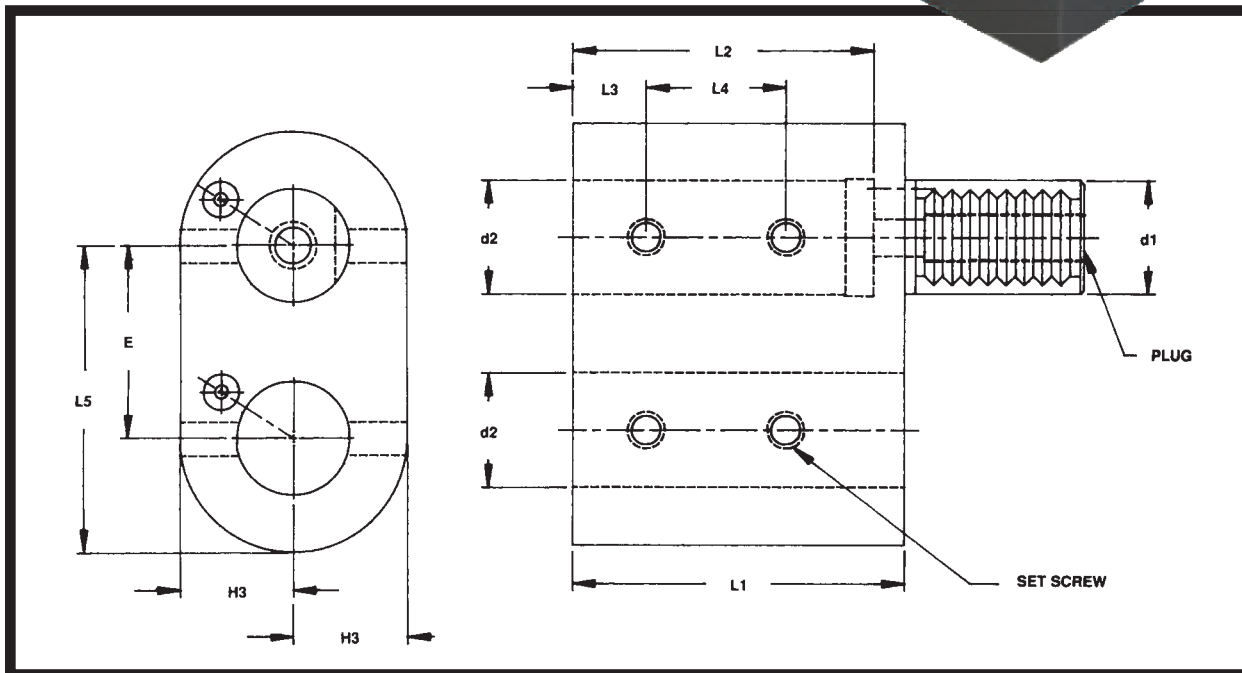
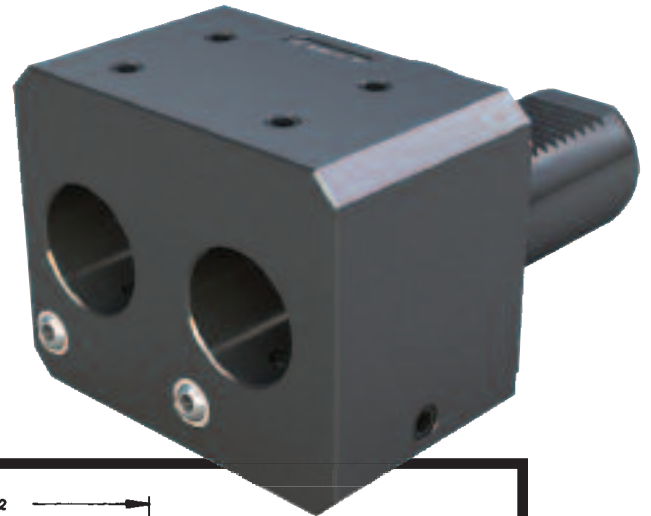
Superior Design/Premium Quality





Double Offset Boring Bar Holder

Right-Hand or Left-Hand



RIGHT-HAND (ABOVE)

PART NUMBER	d ₁	d ₂ in	d ₂ mm	E	H ₃	L ₁	L ₂	L ₃	L ₄	L ₅	SET SCREW	PLUG
CNC86 91.2020	20	¾	20	32	25	45	43	10	20	50	¼-20	¾-24
CNC86 91.3025	30	1	25	45	34	56	50	14	24	65	¼-20	⅝-18
CNC86 91.4032	40	1¼	32	50	42	66	63	15	30	75	⅜-16	⅝-18
CNC86 91.5040	50	1½	40	65	49	80	75	18	38	95	½-13	⅝-18
CNC86 91.6050	60	2	50	80	62	90	85	20	46	120	½-13	⅝-18

LEFT-HAND (OPPOSITE TOOLING)

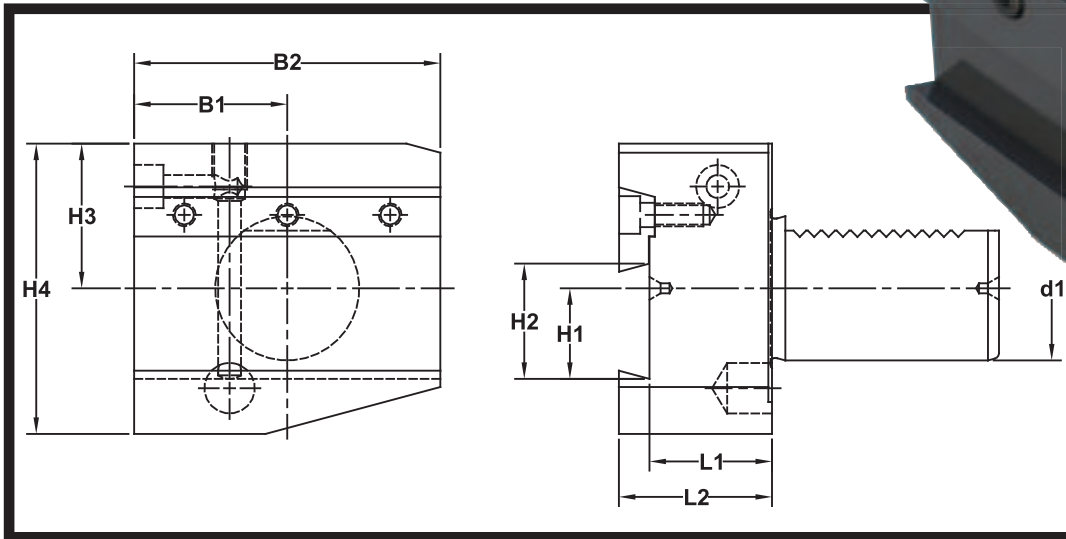
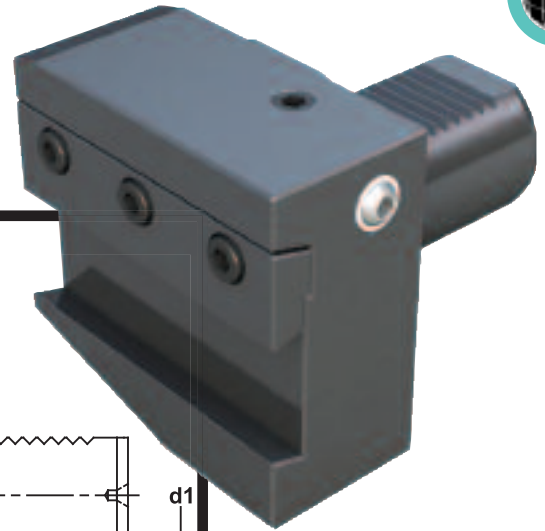
PART NUMBER	d ₁	d ₂ in	d ₂ mm	E	H ₃	L ₁	L ₂	L ₃	L ₄	L ₅	SET SCREW	PLUG
CNC86 92.2020	20	¾	20	32	25	45	43	10	20	50	¼-20	¾-24
CNC86 92.3025	30	1	25	45	34	56	50	14	24	65	¼-20	⅝-18
CNC86 92.4032	40	1¼	32	50	42	66	63	15	30	75	⅜-16	⅝-18
CNC86 92.5040	50	1½	40	65	49	80	75	18	38	95	½-13	⅝-18
CNC86 92.6050	60	2	50	80	62	90	85	20	46	120	½-13	⅝-18

We Now Repair Driven VDI Tooling Guaranteed!



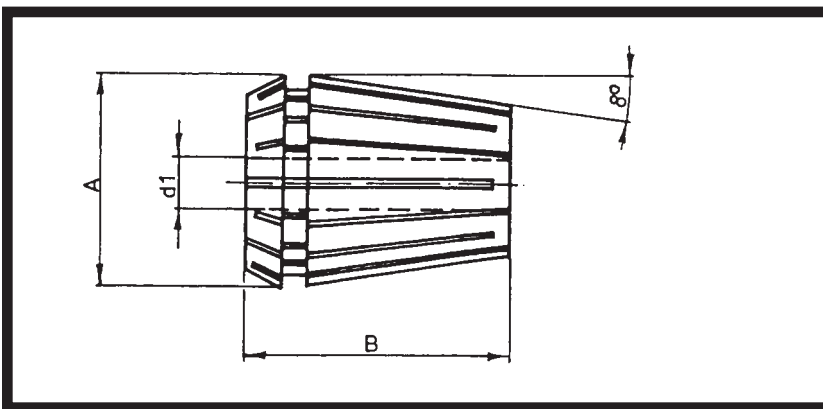


Cut-Off Blade Holder— Form D5



PART NUMBER	D1	H1	H2	H3	H4	L1	L2
CNC86 45.3025	30	21	25	40	80	34	42.5
CNC86 45.3032	40	25	32	40	80	34	42.5

Collet – Form ER



PART NUMBER	d, in	d, mm	A	B	Increments mm
ER16	1/32-3/8	.5-10	17	27	1
ER20	1/16-1/2	1-12	21	31	1
ER25	1/16-5/8	1-16	26	35	1
ER32	3/32-3/4	2-20	33	40	1
ER40	1/8-1	3-25	41	46	1
ER50	7/16-1 5/16	10-34	52	60	2

We Now Repair Driven VDI Tooling Guaranteed!

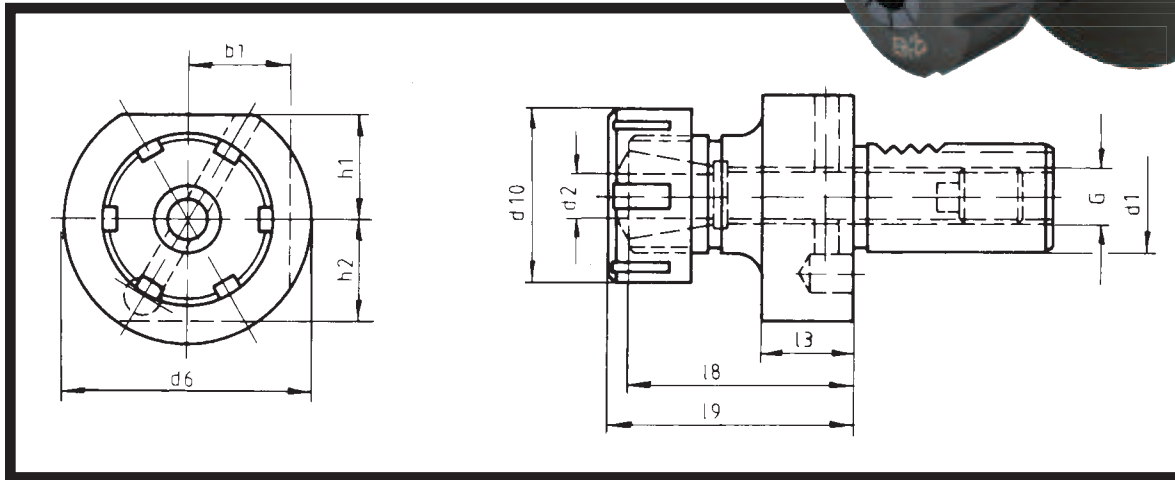
Superior Design/Premium Quality





Collet Chuck – Form E3

ER & RDO Style



VDI: DIN 69880

PART NUMBER	d ₁	d ₂ in	d ₂ mm	d ₆	d ₁₀	b ₁	L ₃	L ₈	L ₉	h ₁	h ₂	G	COLLET TYPE
CNC86 53.1616	16	1/32-3/8	1/2-10	40	28		13	30	40	18	18	9/16-24	ER16
CNC86 53.1620	16	1/32-9/16	1-12	40	34		13	33	45	18	18	9/16-24	ER20
CNC86 53.2016	20	1/32-3/8	1/2-10	50	28		18	30	40	23	23	5/8-24	ER16
CNC86 53.2025	20	1/32-5/8	1-16	50	42		18	38	50	23	23	5/8-24	ER25
CNC86 53.2032	20	1/16-3/4	2-20	50	50		18	48	60	23	23	5/8-24	ER32
CNC86 53.2040	20	3/32-1 1/32	3-25	50	63		18	52	66	23	23	5/8-24	ER40
CNC86 53.2525	25	1/32-5/8	1-16	58	42		18	38	50	25	25	5/8-24	ER25
CNC86 53.2532	25	1/16-3/4	2-20	58	50		18	48	60	25	25	5/8-24	ER32
CNC86 53.3025	30	1/32-5/8	1-16	68	42	30	22	63	75	28	30	5/8-18	ER25
CNC86 53.3032	30	1/16-3/4	2-20	68	50	30	22	63	75	28	30	5/8-18	ER32
CNC86 53.3040	30	3/32-1 1/32	3-25	68	63	30	22	61	75	28	30	5/8-18	ER40
CNC86 53.4025	40	1/32-5/8	1-16	83	42		22	63	75	32.5		5/8-18	ER25
CNC86 53.4032	40	1/16-3/4	2-20	83	50		22	63	75	32.5		5/8-18	ER32
CNC86 53.4040	40	3/32-1 1/32	3-25	83	63		22	61	75	32.5		5/8-18	ER40
CNC86 53.5040	50	3/32-1 1/32	3-25	98	63		30	61	75	35		5/8-18	ER40
CNC86 53.6040	60	3/32-1 1/32	3-25	123	63		30	61	75	42.5		5/8-18	ER40
CNC86 53.20415	20	1/16-5/8	1 1/2-16	50	43		18	43	57	23	23	5/8-18	EX25
CNC86 53.25415	25	1/16-5/8	1 1/2-16	58	43		18	48	62	25	25	5/8-18	EX25
CNC86 53.30415	30	1/16-5/8	1 1/2-16	68	43	30	22	47	57	28	30	5/8-18	EX25
CNC86 53.30462	30	1/16-1	1 1/2-25	68	60		22	59	75	28	30	5/8-18	EX32
CNC86 53.40415	40	1/16-5/8	1 1/2-16	83	43	30	22	43	57	32.5		5/8-18	EX25
CNC86 53.40462	40	1/16-1	1 1/2-25	83	60	30	22	59	75	32.5		5/8-18	EX32
CNC86 53.40467	40	1/8-1 1/4	3 1/2-32	83	72		30	78	90	32.5		5/8-18	EX40
CNC86 53.50462	50	1/16-1	1 1/2-25	98	60		30	59	75	35		5/8-18	EX32
CNC86 53.50467	50	1/8-1 1/4	3 1/2-32	98	72		30	78	90	35		5/8-18	EX40
CNC86 53.60467	60	1/8-1 1/4	3 1/2-32	123	72		30	78	90	42.5		5/8-18	EX40

We Now Repair Driven VDI Tooling Guaranteed!



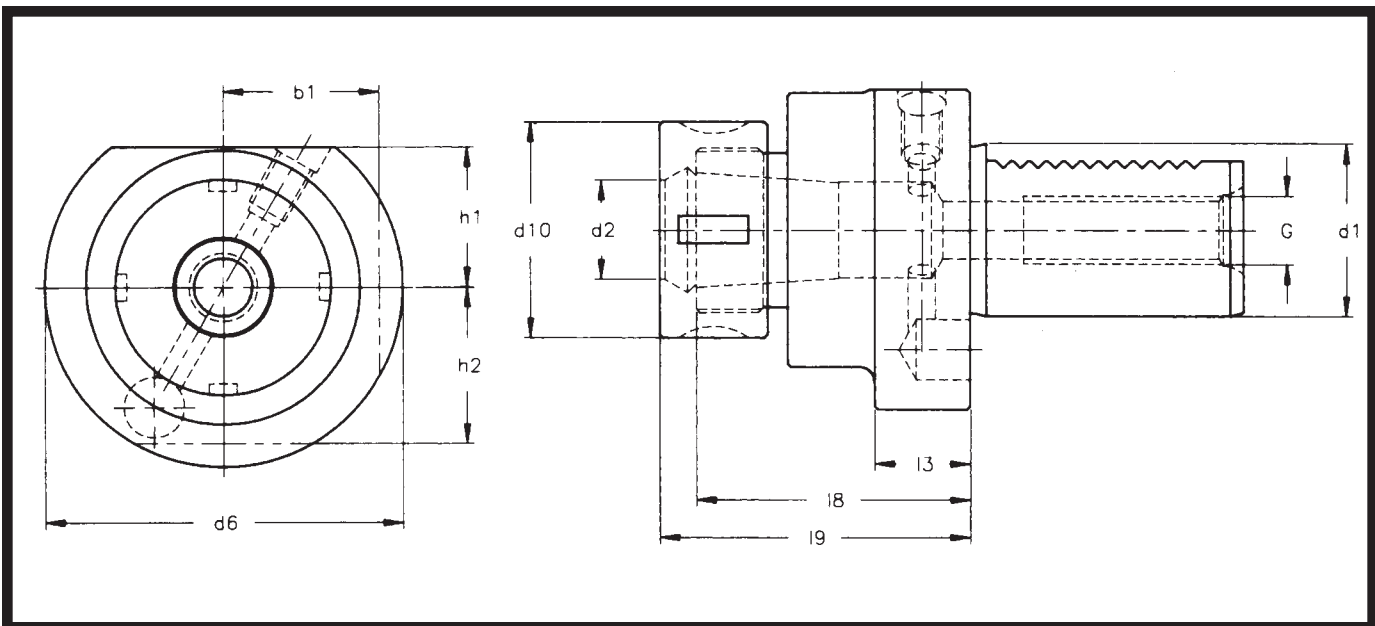


Collet Chuck – Form E3

TG75 and TG100 Style



VDI- DIN 69880



PART NUMBER	d ₁	d ₂ inch	d ₆	d ₁₀	b ₁	L ₃	L ₈	L ₉	h ₁	h ₂	g	COLLET TYPE
CNC86 53.3075TG	30	3/64-3/4	68	50	30	22	63	77.4	28	30	5/8-18	75TG
CNC86 53.30100TG	30	3/32-1	68	60	30	22	63	82.1	28	30	5/8-18	100TG
CNC86 53.4075TG	40	3/64-3/4	83	50		22	63	77.4	32.5		5/8-18	75TG
CNC86 53.40100TG	40	3/32-1	83	60		22	63	82.1	32.5		5/8-18	100TG
CNC86 53.5075TG	50	3/64-3/4	98	50		30	71	77.4	35		5/8-18	75TG
CNC86 53.50100TG	50	3/32-1	98	60		30	71	82.1	35		5/8-18	100TG
CNC86 53.6075TG	60	3/64-3/4	123	50		30	71	77.4	42.5		5/8-18	75TG
CNC86 53.60100TG	60	3/32-1	123	60		30	71	82.1	42.5		5/8-18	100TG
CNC86 53.8075TG	80	3/64-3/4	158	50		40	63	77.4	55		5/8-18	75TG
CNC86 53.80100TG	80	3/32-1	158	60		40	63	82.1	55		5/8-18	100TG

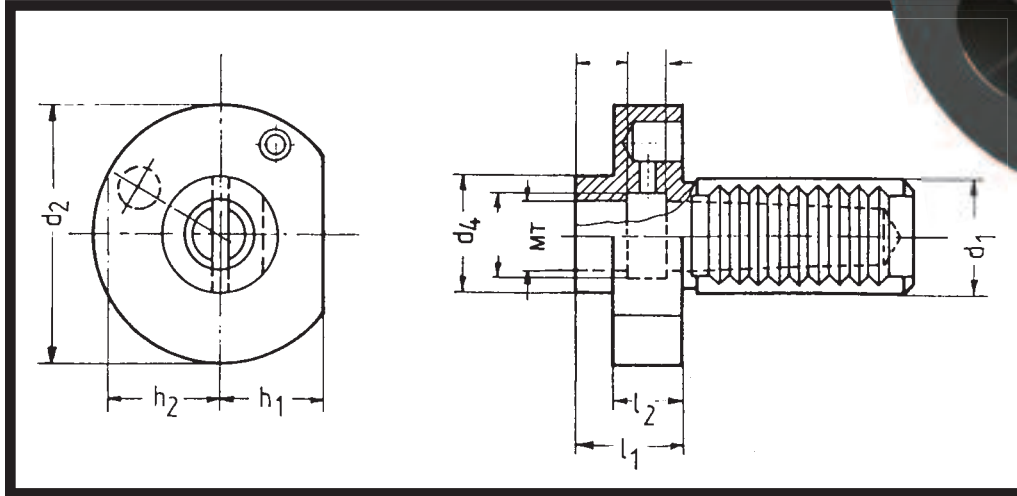
We Now Repair Driven VDI Tooling Guaranteed!

Superior Design/Premium Quality





Morse Taper VDI



PART NUMBER	d ₁	MT	d ₂	d ₄	h ₁	h ₂	L ₁	L ₂
CNC86 71.2010	20	1	50		23	23	23	
CNC86 71.2510	25	1	58		25	25	23	
CNC86 71.2520	25	2	58		25	25	27	
CNC86 71.3010	30	1	68		28	30	27	
CNC86 71.3020	30	2	68		28	30	27	
CNC86 71.3030	30	3	68		28	30	70	
CNC86 71.4010	40	1	83	55	32.5		36	22
CNC86 71.4020	40	2	83	55	32.5		36	22
CNC86 71.4030	40	3	83	62	32.5		36	22
CNC86 71.4040	40	4	83	68	32.5		80	22
CNC86 71.5020	50	2	98	59	35		36	30
CNC86 71.5030	50	3	98	62	35		36	30
CNC86 71.5040	50	4	98	69	35		50	30
CNC86 71.6020	60	2	123	58	42.5		36	30
CNC86 71.6030	60	3	123	58	42.5		36	30
CNC86 71.6040	60	4	123	68	42.5		50	30
CNC86 71.6050	60	5	123	98	42.5		63	30
CNC86 71.8040	80	4	158	68	55		50	40
CNC86 71.8050	80	5	158	98	55		50	40
CNC86 71.3020T	30	2	68		28	30	37	
CNC86 71.3030T	30	3	68		28	30	70	
CNC86 71.4020T	40	2	83	55	32.5		46	22
CNC86 71.4030T	40	3	83	62	32.5		56	22
CNC86 71.4040T	40	4	83	68	32.5		92	22
CNC86 71.5020T	50	2	98	59	35		46	30
CNC86 71.5030T	50	3	98	62	35		46	30
CNC86 71.5040T	50	4	98	69	35		62	30
CNC86 71.6020T	60	2	98	58	42.5		46	30
CNC86 71.6030T	60	3	98	58	42.5		46	30
CNC86 71.6040T	60	4	123	68	42.5		62	30

Form "T" has Tang enclosed

We Now Repair Driven VDI Tooling Guaranteed!





Interchangeable Head VDI

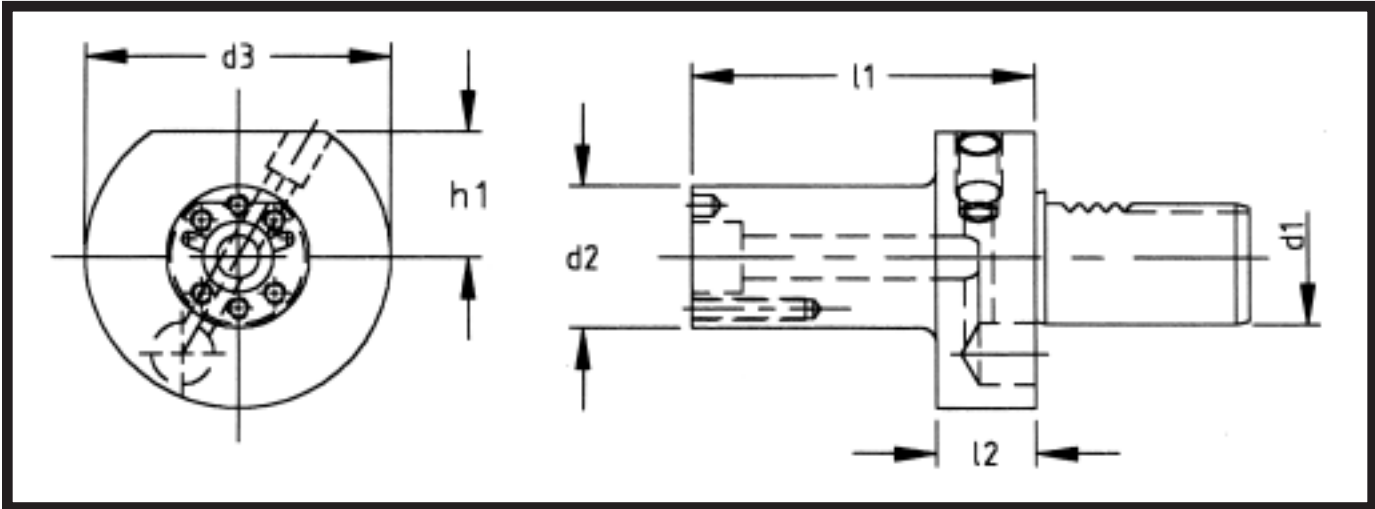
Our new line of Interchangeable Head Boring System VDI Toolholders are designed to fit your Kennametal Bolt-on Boring Heads. The DIN 69 880 VDI Toolholder will accept a Kennametal style LP-series Boring Head with internal coolant capabilities.

These toolholders are designed to increase your productivity in boring applications and maintain higher quality surface finishes as a result of a more statically stable tool.

Eliminates a joint in tool set-ups which have been known to show performance increases up to 20% to 30%.



VDI- DIN 69880



PART NUMBER	d ₁	d ₂ inch	d ₃	L ₁	L ₂	h ₁
CNC86 58.3032-3	30	1¼	68	75	22	28
CNC86 58.3032-4	30	1¼	68	100	22	28
CNC86 58.3032-5	30	1¼	68	125	22	28
CNC86 58.3040-3	30	1½	68	75	22	28
CNC86 58.3040-4	30	1½	68	100	22	28
CNC86 58.3040-5	30	1½	68	125	22	28
CNC86 58.4032-3	40	1¼	83	75	22	31
CNC86 58.4032-4	40	1¼	83	100	22	31
CNC86 58.4032-5	40	1¼	83	125	22	31

PART NUMBER	d ₁	d ₂ inch	d ₃	L ₁	L ₂	h ₁
CNC86 58.4040-3	40	1½	83	75	22	31
CNC86 58.4040-4	40	1½	83	100	22	31
CNC86 58.4040-5	40	1½	83	125	22	31
CNC86 58.5032-3	50	1¼	98	75	30	35
CNC86 58.5032-4	50	1¼	98	100	30	35
CNC86 58.5032-5	50	1¼	98	125	30	35
CNC86 58.5040-3	50	1½	98	75	30	35
CNC86 58.5040-4	50	1½	98	100	30	35
CNC86 58.5040-5	50	1½	98	125	30	35

We Now Repair Driven VDI Tooling Guaranteed!

Superior Design/Premium Quality





VDI BAR PULLER

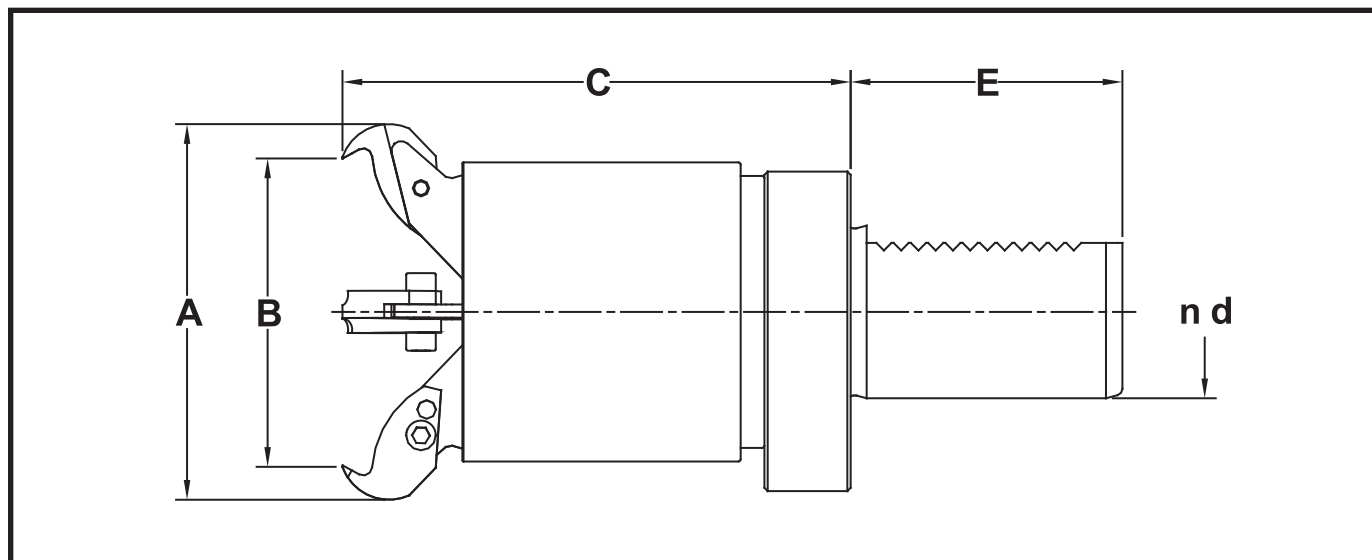
Bar Pullers to fit your DIN 69880 VDI 30MM and 40MM Turret and allow you the flexibility to hold a Variety of Shapes and Diameters of Material: Flat, Hex, Square and Round.



Why use a Bar Puller?

- They provide a simple and inexpensive method for automating any CNC Lathe.
- Costs far less than a bar feed.
- Bar Pullers don't take up valuable Floor Space.
- They are Easy to Set up and use-no electrical interface required.
- Maintenance-Free Operation.
- They can be easily moved from one machine to another.
- A wide gripping range is obtained from a very compact design.
- **Gripping Range:** 1/8" to 3 1/8" Diameter.

Included for Free: a Set of Hard Steel Fingers for your Bar Puller



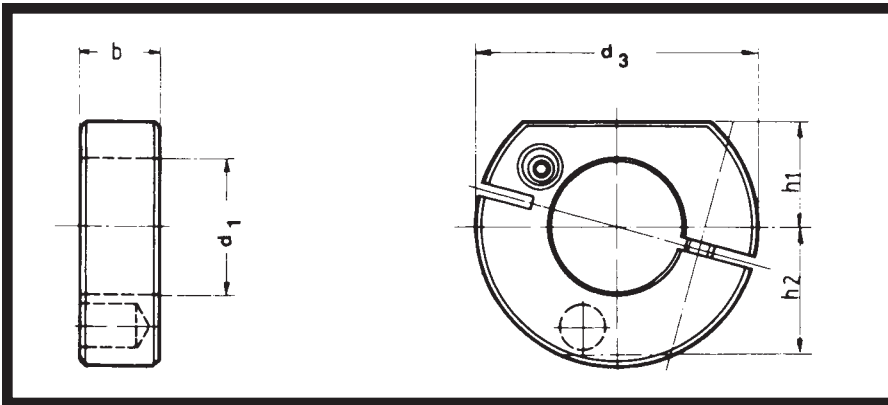
PART NUMBER	D	A	B	C	E
BP85.30	30mm	100	1/8 - 3-1/8	114	55
BP85.40	40mm	100	1/8 - 3-1/8	118	63





Clamping Ring – Form Z1

Internal Coolant

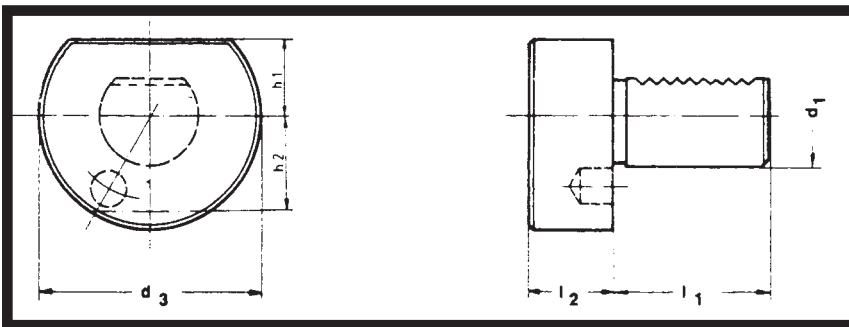


PART NUMBER	d ₂ inch	d ₂ metric	d ₃	b	h ₁	h ₂
CNC86 63.5020	¾	20	50	15	23	23
CNC86 63.5825	1	25	58	16	25	25
CNC86 63.6830	1¼	32	68	20	28	30
CNC86 63.8340	1½	40	83	22	32.5	
CNC86 63.9850	2	50	98	30	35	
CNC86 63.12360	2¼	60	123	30	42.5	
CNC86 63.15880	3	80	158	40	55	

Plug – Form Z2

Steel or Plastic:

Protect your Turret from Chips!



PART NUMBER	d ₁	d ₃	h ₁	h ₂	L ₁	L ₂
CNC86 82.1640S	16	40	18	18	32	13
CNC86 82.1640P	16	40	18	18	32	13
CNC86 82.2050S	20	50	23	23	40	16
CNC86 82.2050P	20	50	23	23	40	16
CNC86 82.2558S	25	58	25	25	48	16
CNC86 82.2558P	25	58	25	25	48	16
CNC86 82.3068S	30	68	28	30	55	16
CNC86 82.3068P	30	68	28	30	55	16

PART NUMBER	d ₁	d ₃	h ₁	h ₂	L ₁	L ₂
CNC86 82.4083S	40	83	32.5		63	20
CNC86 82.4083P	40	83	32.5		63	20
CNC86 82.5098S	50	98	35		78	20
CNC86 82.5098P	50	98	35		78	20
CNC86 82.60123S	60	123	42.5		94	20
CNC86 82.60123P	60	123	42.5		94	20
CNC86 82.80158S	80	158	55		124	20
CNC86 82.80158P	80	158	55		124	20

VDI-DIN 69880

