

Mazak



Super Quick Turn Series

**GET
THE
MOST
FROM
YOUR
TURNING
CENTER**



*High Precision Tool Holders And Spindle Units
For Most CNC Turning Machines*

ANDRUS OLVER • HITACHI SEIKI
 ORNSTEIN • BARUFFALDI •
 TURCO • PROBO • BENZINGER
 KWACHON • PUBLICACION
 AOFBINGER • HYUNDAI KIA
 SOMI • SIGMA • MEGA •
 KAI TRITEC • ENCINNATI •
 YAMAHA • CITIZEN • IRIN
 FA • YAMAWA • CLAUSING
 WATSON • TONGIL •
 JIEMO • JONES & LAWSON •
 CORRO • HUSAN • KIA
 LORANA • CHANGHIN KORE
 BANGBURY • INSU •
 LINDSAY • TSUGAMI
 PMG HAIN • ALDRE &
 SHIPLEY • VICTOR • ESCO •
 KINGSTON • METRA • SOUTH
 END • WASINO • EUROTEC
 MAZAK • WELLES • FAVAR
 MIGHTY SPINNER • FAMI
 MILITRONICS • FORTUNE •
 MIYAN • GREGS & LEWIS
 MC • SEEMER • GRAB
 DALLAN • HANSON • NEW
 BRITAIN • HARDING • ORMA
 BARON'S OLVER • HITACHI
 SKILL • HURCO • PROBO
 TR • BENZINGER • BENZING
 JOHN FORD • TONGIL •



ITI TOOLING COMPANY INC. is a unique and experienced supply company, offering an extensive range of top-quality "Driven" and "Static" tool holding solutions for most CNC Lathes from around the world.

We supply the world's finest CNC Lathe Tool Holders, manufactured by companies who have been recognized as industry leaders for decades. Our clients have gained confidence in the quality and "know-how" that comes from our many years experience addressing a broad spectrum of applications in all industries. Applications that utilize not only our standard Tool Holders but also "Multi-Head" and "Multi-Spindle" Units, along with other custom designs, which have economically solved problems for today's more demanding, multi-tasking and highly competitive manufacturing environments.

We offer precision, top quality toolholders and spindle units designed as Bolt-on, VDI and other styles of mounting systems that are available and manufactured to meet the highest standards of quality using only the finest materials available.



ITI TOOLING COMPANY INC.

37 Orchard St., Ramsey, N.J. 07446 1-888-88-INDEX



What we are made of...

Our focus is on the highest quality standards and utmost commitment to ensure the optimal design of our products in form and function. For this purpose, we systematically invest in state-of-the-art production lines and develop methods for quality assurance in cooperation with external institutions.

Competence and reliability in our advisory services, our daily communication and project management – these are the core elements convincing our customers of our performance and services over and over again.

www.ITITooling.com

*Even the finest "state of the art" cutting tools used on the best lathes
are only as good as the **tool holders** that support them.*

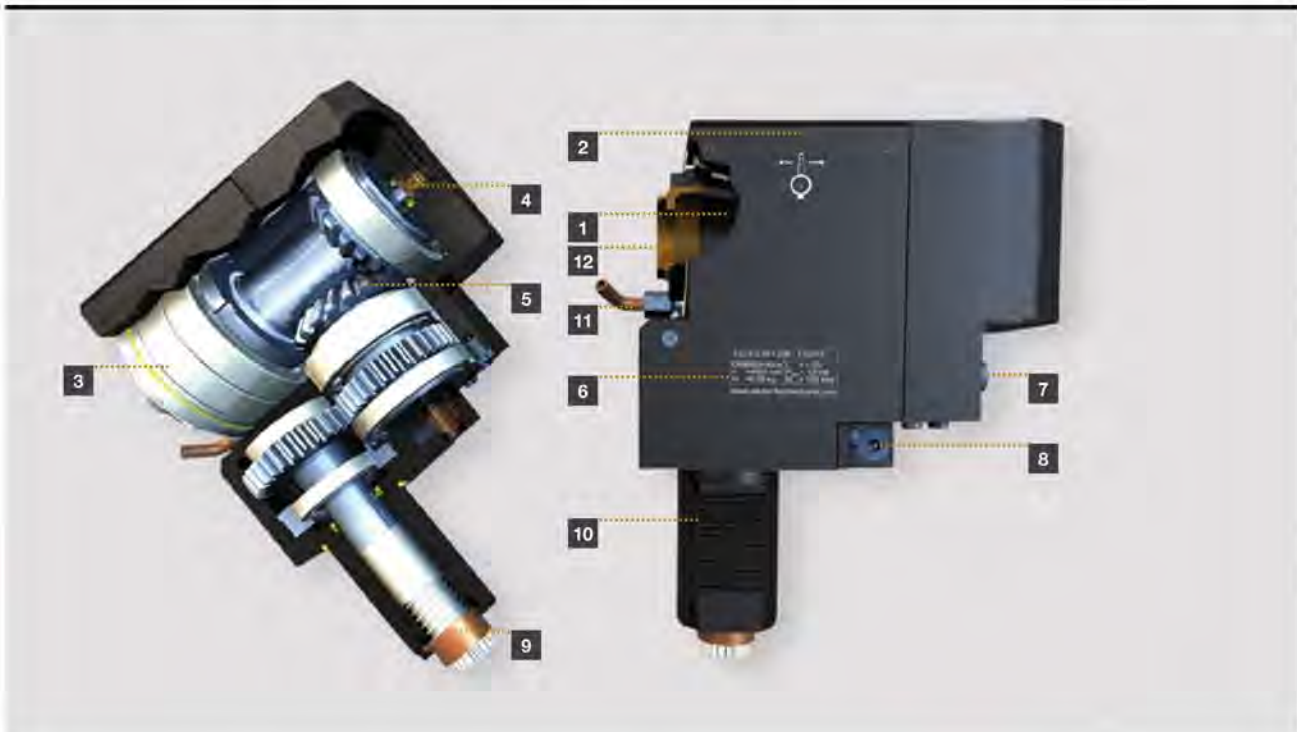


ITI TOOLING COMPANY

A Division of **INDEXING TECHNOLOGIES INC.**

37 Orchard Street., Ramsey, NJ. 07446 - Phone (201) 934-6333 - Fax (201) 934-6333 www.indexingtechnologies.com
www.ititooling.com

Good reasons to specify ITI Tooling Co.



1. Highest possible rotational accuracy
2. Qualified datum surface for rapid alignment
3. Optimum pre-loaded bearing configurations for maximum rigidity
4. Sauter patented high-pressure internal coolant delivery system that can also be used dry
5. High-precision gear train of optimum power and performance
6. Laser etched identification plate with all relevant information
7. Independent external coolant connection
8. Patented "rapid-set" spindle alignment device to minimize tool change and set-up time
9. Patented spindle orientation detent for rapid tool drive engagement – DIN5480
10. Universal mounting shank with double tooth rack for right-hand or left-hand operation
11. External coolant supply – can be individually fitted
12. Recessed collet clamping nut ensures maximum rigidity and an optimum interference free zone

All spindle units undergo stringent testing, including thermal testing and monitoring during a running-in procedure prior to delivery, to ensure guaranteed performance immediately upon being placed into service.



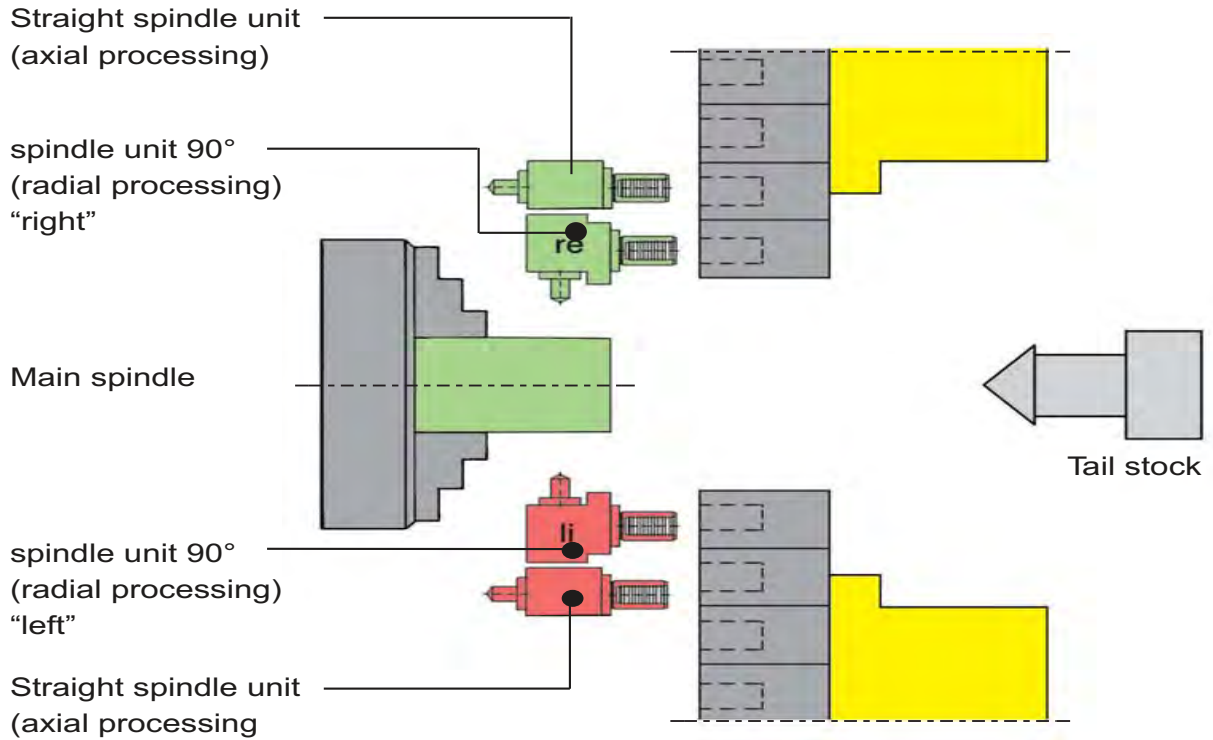
ITI TOOLING COMPANY

A Division of **INDEXING** TECHNOLOGIES INC.

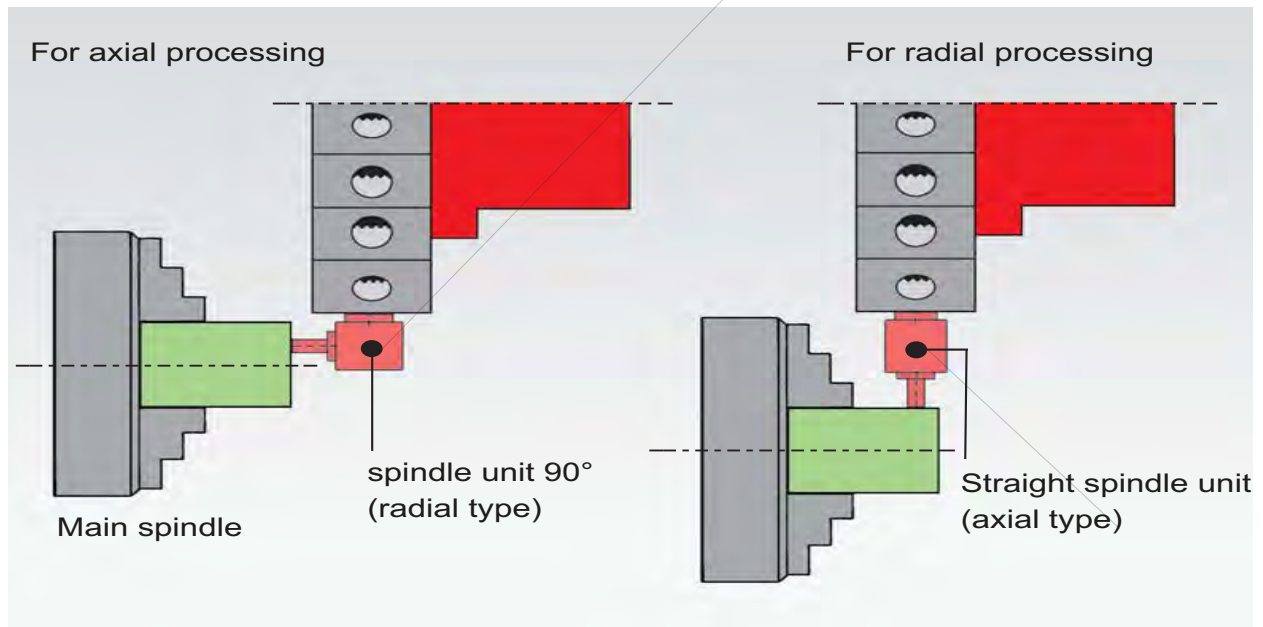
37 Orchard Street., Ramsey, NJ. 07446 - Phone (201) 934-6333 - Fax (201) 934-6333 www.indexingtechnologies.com
www.ititooling.com

1. Axial mounting on disc turrets

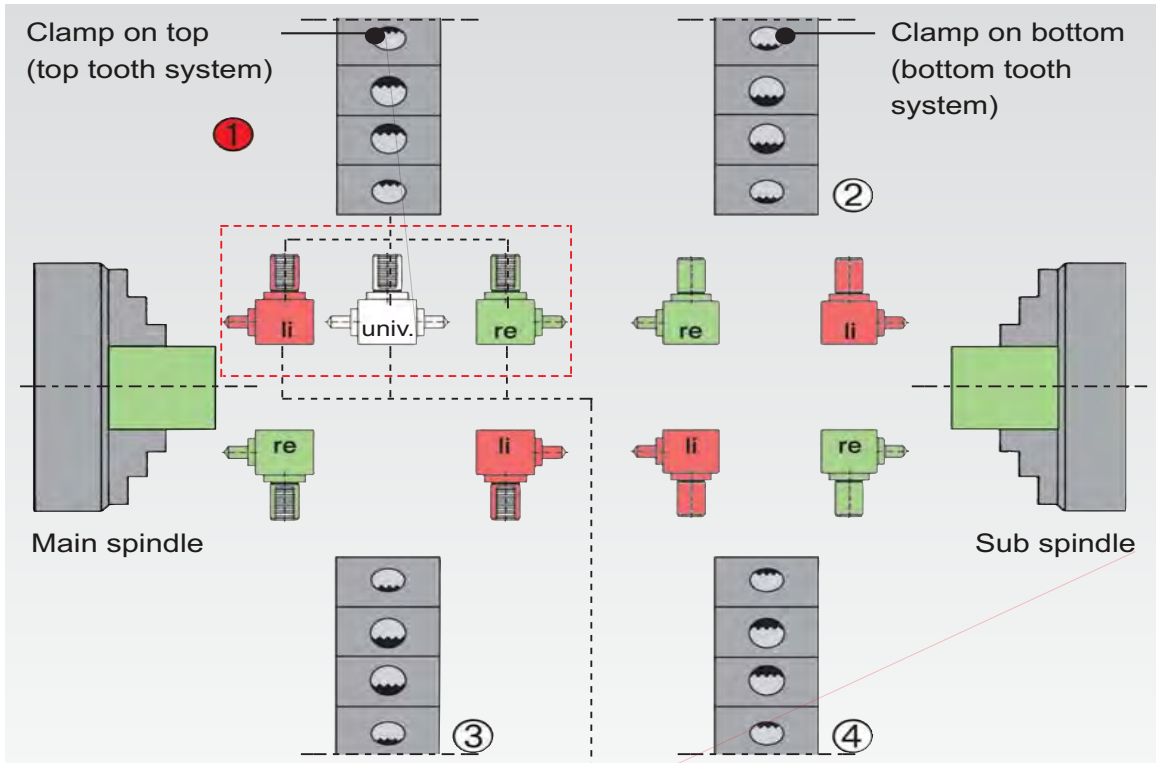
Orientation and designation of spindle units



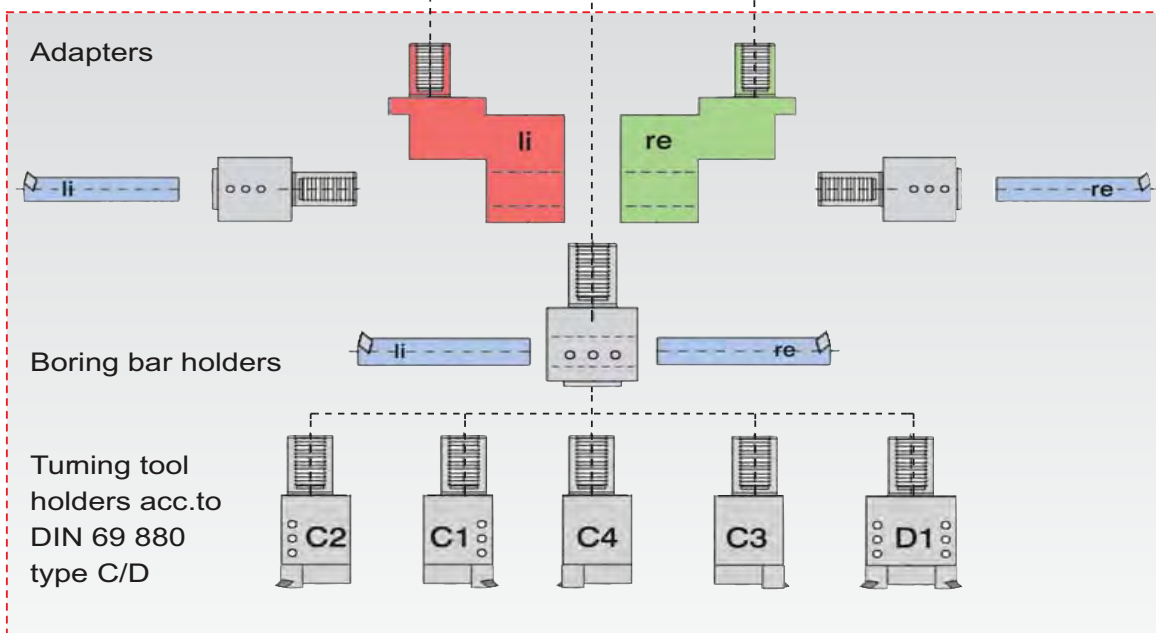
2. Radial mounting on disc turrets



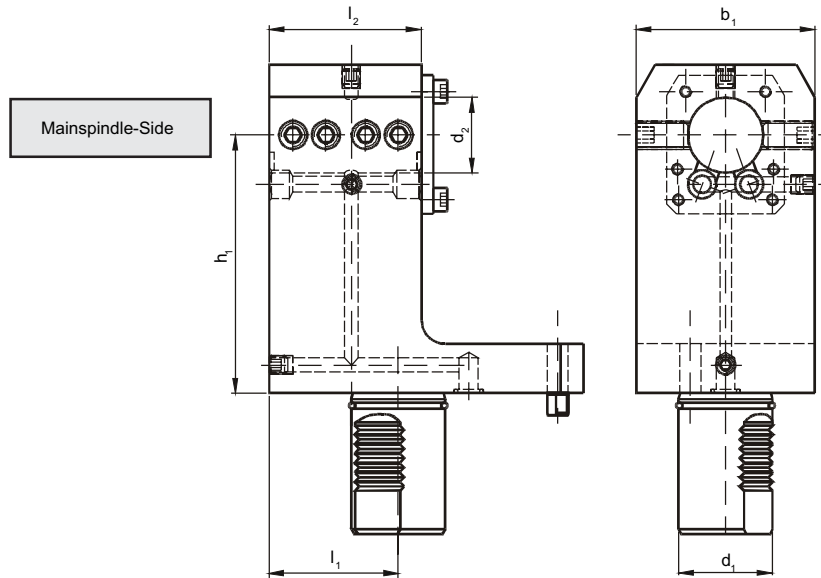
Right / left / universal designation for spindle units



① Tool holder designation



Combi holder

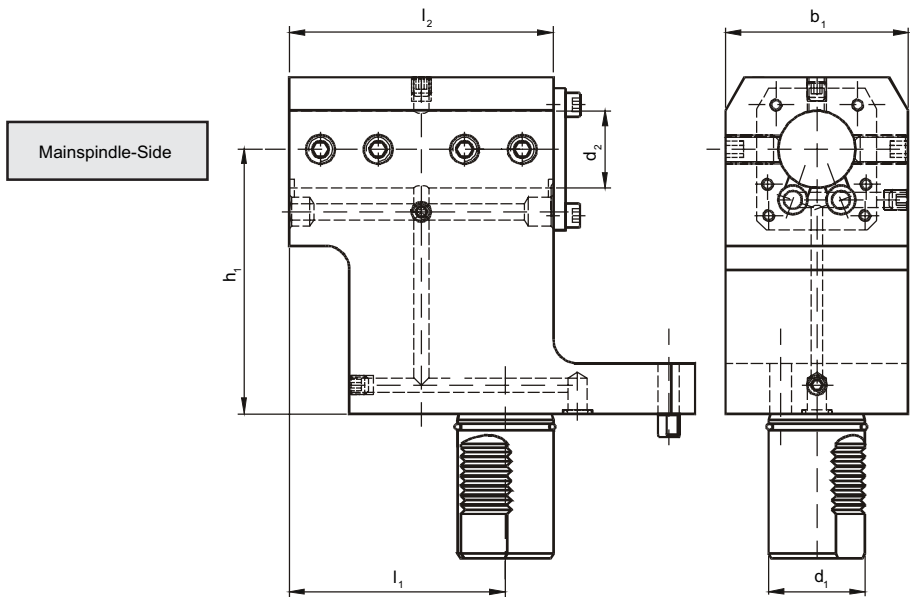


Machine Type	No.	d ₁	d ₂	h ₁	l ₁	l ₂	b ₁
SQT 10M-12D / SQT 15M-16D	17.4025 SQT10	40	25	110	55	65	76
SQT 15MS-16D / SQT 200M-16D	17.4032 SQT10	40	32	110	55	65	76
SQT 15M-12D	17.4025 SQT15	40	25	140	55	70	80
SQT 18M-12D	17.4032 SQT15	40	32	140	55	70	80
SQT 200M-12D	17.4040 SQT15	40	40	140	55	70	80
SQT 28M-12D	SQT2832 1751	50	32	175	63	90	92
SQT 30M-12D	SQT2850 1751	50	50	175	63	90	92

Reducing sleeve see page 6.5

For internal and external cooling

With ϕ on request



Machine Type	No.	d ₁	d ₂	h ₁	l ₁	l ₂	b ₁
SQT 250M-16D	17.4032 DSQT10	40	32	110	90	110	76
SQT 250M-12D	17.4040 DSQT15	40	40	140	90	110	84

Reducing sleeve see page 6.5

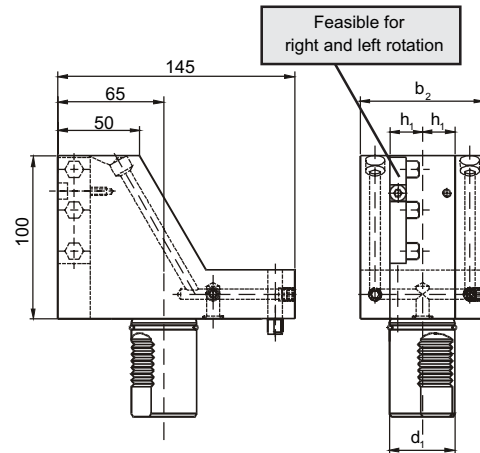
For internal and external cooling

With ϕ on request

Combi-outside holder R/L

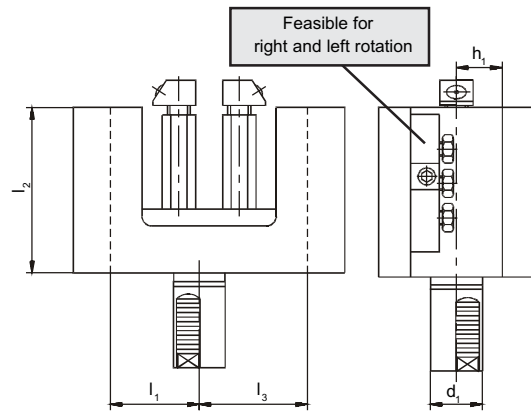
SQT 2825 1503R as shown
 SQT 2825 1504L reversed

Machine Type	No.	d_1	h_1	h_2	b_1	l_1
SQT 10M-12D	1.4020 SQT10	40	20	76	100	--
SQT 15M-16D						
SQT 200M-16D						
SQT 150M-16D						
SQT 15M-12D	1.4025 SQT15	40	25	86	120	78
SQT 18M-12D						
SQT 200M-12D						
SQT 250M-12-D						
SQT 28M-12D	SQT 2825 1507R	50	25	100	150	86
SQT 30M-12D	SQT 2825 1507L	50	25	100	150	86
SQT 300M-12D						



Combi-duo-outside holder R/L

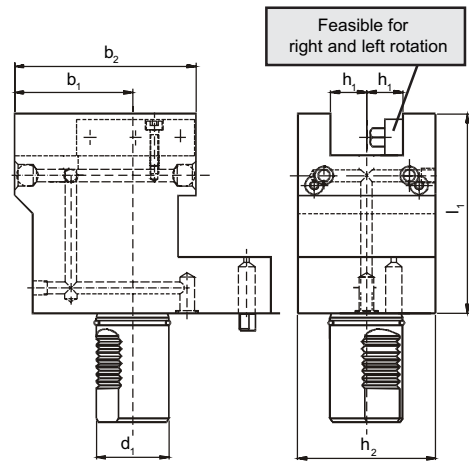
Machine Type	No.	d_1	h_1	l_1	l_2	l_3
SQT 10MS-12D	SQT 1020 1259	40	20	45	100	73
SQT 15MS-16D						
SQT 200MS-16D						
SQT 250MS-16D						
SQT 15MS-12D	SQT 1825 1259	40	25	40	125	70
SQT 18MS-12D						
SQT 200MS-12D						
SQT 250MS-12D						
SQT 28MS-12D	SQT 2825 1509	50	25	46	146	75
SQT 30MS-12D						
SQT 300M-12D						



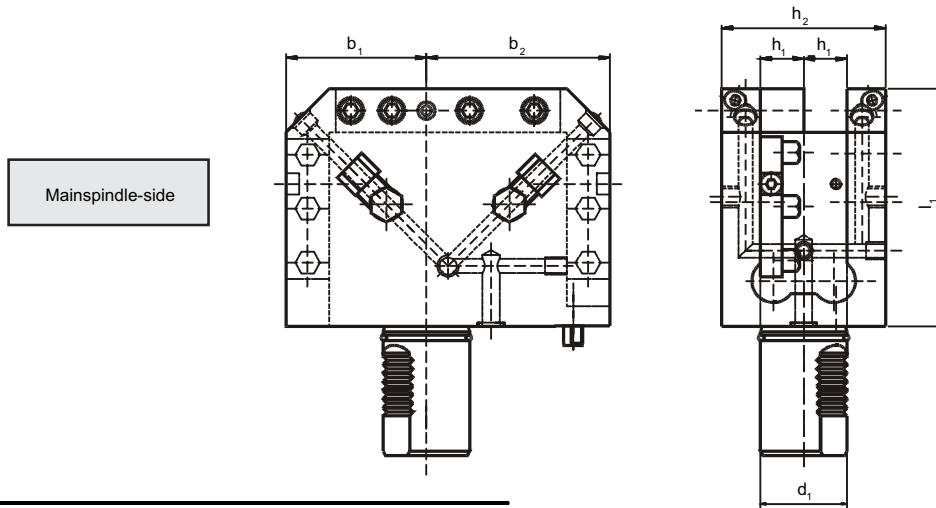
Combi-facing holder R/L

Machine Type	No.	d_1	h_1	h_2	l_1	b_1	b_2
SQT 10M-12D	SQT 1020 1106	40	20	76	110	60	110
SQT 15M-16D							
SQT 200M-16D							
SQT 250M-16D							
SQT 15M-12D	SQT 1825 1406	40	25	86	143	65	115
SQT 18M-12D							
SQT 200M-12D							
SQT 250M-12D							
SQT 28M-12D	SQT 2825 1706	50	25	98	163	57	120
SQT 30M-12D							
SQT 300M-12D							

Mainspindle-Side



Multiple tool holder



Machine Type	No.	d ₁	h ₁	h ₂	l ₁	b ₁	b ₂
SQT 10MS-12D	15.4020 SQT10	40	20	76	110	65	85
SQT 15MS-16D							
SQT 200MS-16D							
SQT 250MS-16D	15.4025 SQT15	40	25	100	136	78	88
SQT 15MS-12D							
SQT 18MS-12D							
SQT 200MS-12D							
SQT 250MS-12D							

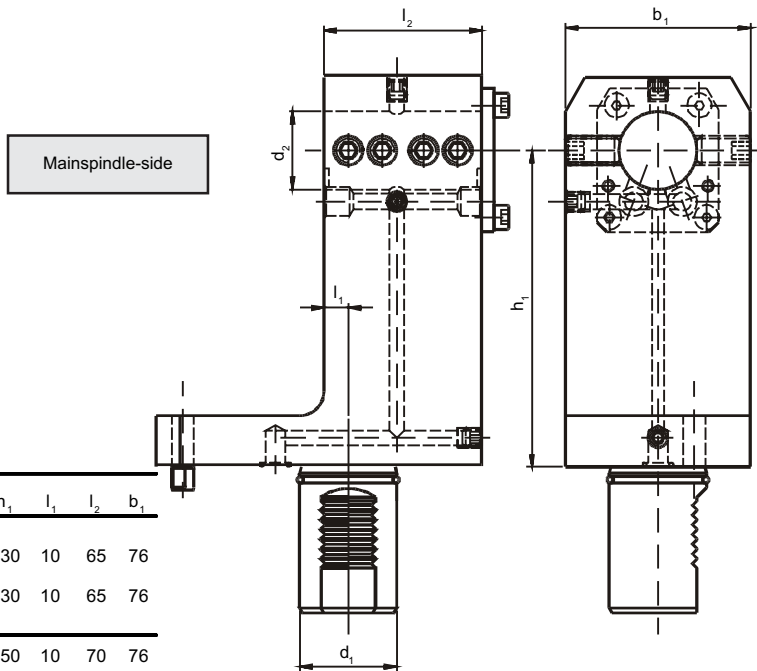
Combi holder

Reducing sleeve, see page 6.5

Collert inserts, page 6.7

ø on request

For internal and external cooling



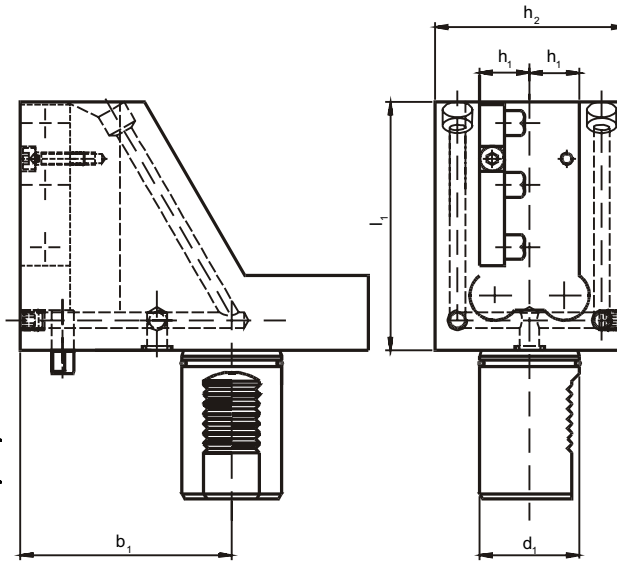
Machine Type	No.	d ₁	d ₂	h ₁	l ₁	l ₂	b ₁
MP 410N-12D	17.4025 MP 610	40	25	130	10	65	76
MP 415N-12D							
MP 610-12D							
MP 610N-12D	17.4032 MP 610	40	32	130	10	65	76
MP 615N-12D							
MP 6200N-16D							
MP 420N-12D	17.4025 MP 620	40	25	150	10	70	76
MP 620-12D							
MP 620N-12D	17.4032 MP 620	40	32	150	10	70	76
MP 6200-12D							
MP 6200-12D	17.4040 MP 620	40	40	150	10	70	76

Tools for MAZAK MP 630 / MP 6300 on request

Combi-outside holder

Tools for MAZAK MP 630 / MP 6300 on request

Mainspindle-side

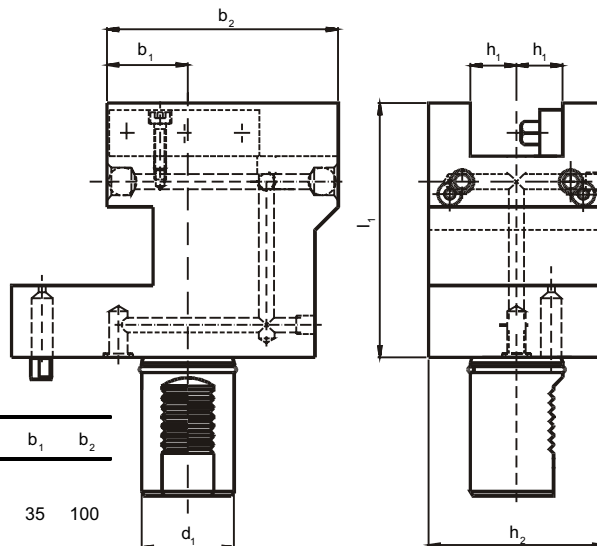


Machine Type	No.	d_1	h_1	h_2	l_1	b_1
MP 410N-12D	1.4020 MP 610	40	20	76	100	85
MP 415N-12D						
MP 610-12D						
MP 610N-12D						
MP 615N-12D						
MP 6200-16D	1.4025 MP 620	40	25	50	120	83
MP 420N-12D						
MP 620-12D						
MP 620N-12D						
MP 6200-12D						

Combi-facing holder

Tools for MAZAK MP 630 / MP 6300 on request

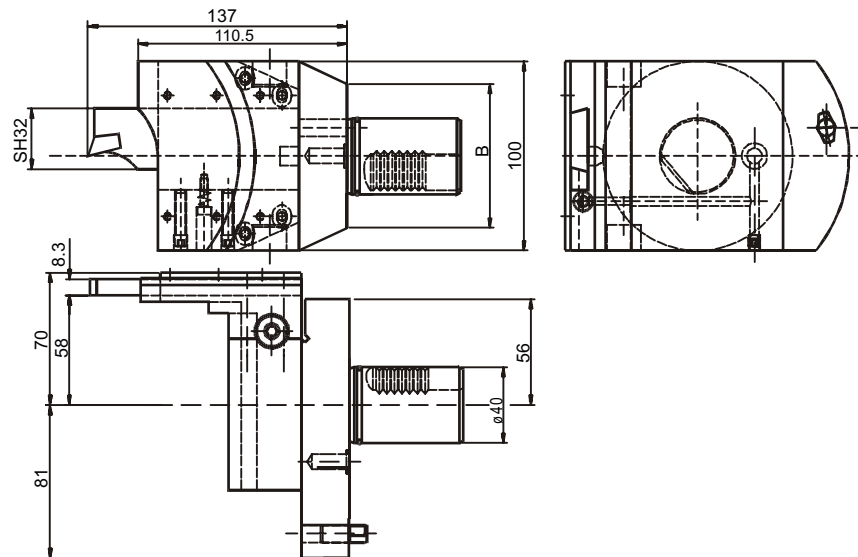
Mainspindle-side



Machine Type	No.	d_1	h_1	h_2	l_1	b_1	b_2
MP 410N-12D	MP 6120 1016	40	20	76	110	35	100
MP 415N-12D							
MP 610-12D							
MP 610N-12D							
MP 615N-12D							
MP 6200-16D	MP 6225 1406	40	25	80	143	55	115
MP 420N-12D							
MP 620-12D							
MP 620N-12D							
MP 6200-12D							

**Infeed toolholder
SH32**

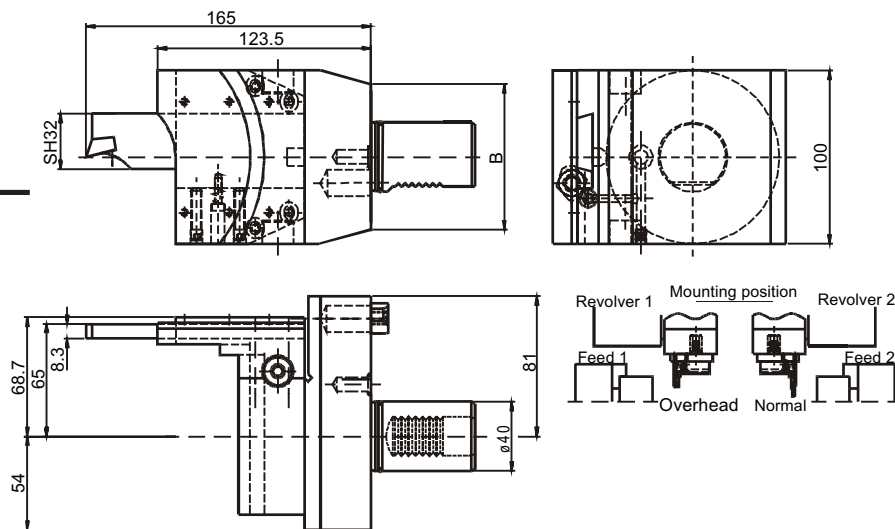
For SQT-Series



Machine Type	No.	SH	B	
SQT 10M-12D / SQT 15M-16D	32.4032 SQT10 UK	32	76	as shown
SQT 15M-16D / SQT 200M-16D	32.4032 SQT10	32	76	reversed
SQT 250M-16D				
SQT 15M-12D / SQT 18M-12D	32.4032 SQT15 UK	32	84	as shown
SQT 200M-12D / SQT 250M-12D	32.4032 SQT15	32	84	reversed
SQT 10M-12D / SQT15M-16D	32.4032 SQT10 LUK	32	76	
SQT 15M-16D / SQT 200M-16D	32.4032 SQT10 L	32	76	Also in L-version available
SQT 250M-16D				(Cutting tool in direction to 2nd spindle)
SQT 15M-12D / SQT 18M-12D	32.4032 SQT15 LUK	32	84	
SQT 200M-12D / SQT 250M-12D	32.4032 SQT15 L	32	84	

**Infeed toolholder
SH32**

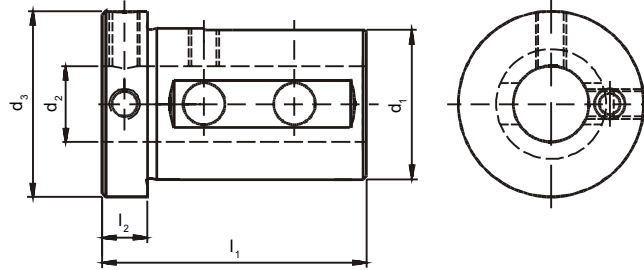
For MP-Series



Machine Type	No.	SH	B	
MP 410N-12D / MP 415N-12D	32.4032 MP10 UK	32	76	as shown
MP 610-12D / MP 6200-16D	32.4032 MP10	32	76	reversed
MP 420N-12D / MP 620-12D	32.4032 MP620 UK	32	84	as shown
MP 620N-12D / MP 6200-12D	32.4032 MP620	32	84	reversed
MP 410N-12D / MP 415N-12D	32.4032 MP610 UK	32	76	
MP 610-12D / MP 6200-16D	32.4032 MP610 L	32	76	Also in L-version available
MP 420N-12D / MP 620-12D	32.4032 MP620 LUK	32	84	(Cutting tool in direction to 2nd spindle)
MP 620N-12D / MP 6200-12D	32.4032 MP620 L	32	84	

Reducing sleeve with internal cooling supply

For original MAZAK-tool holder

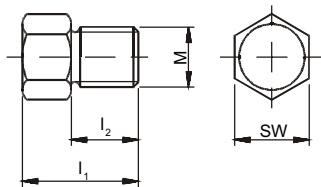


Convertible for internal / external coolant supply

No.	d ₁	d ₂	d ₃	l ₁	l ₂
QT 828	25	6	34	65	10
QT 827	25	8	34	65	10
QT 826	25	10	34	65	10
QT 825	25	12	34	65	10
QT 824	25	16	34	65	10
QT 823	25	20	34	65	10
QT 808	30	6	44	72	10
QT 807	30	8	44	72	10
QT 806	30	10	44	72	10
QT 805	30	12	44	72	10
QT 804	30	16	44	72	10
QT 803	30	20	44	72	10
QT 802	30	25	44	72	10
QT 1509	40	6	49	78	10
QT 1508	40	8	49	78	10
QT 1507	40	10	49	78	10
QT 1506	40	12	49	78	10
QT 1505	40	16	49	78	10
QT 1504	40	20	49	78	10
QT 1503	40	25	49	78	10
QT 1502	40	32	49	78	10
QT 2009	50	8	63	97	12
QT 2008	50	10	63	97	12
QT 2007	50	12	63	97	12
QT 2006	50	16	63	97	12
QT 2005	50	20	63	97	12
QT 2004	50	25	63	97	12
QT 2003	50	32	63	97	12
QT 2002	50	40	63	97	12

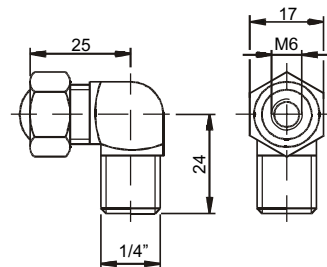
No.	d ₁	d ₂	d ₃	l ₁	l ₂
SQT 10 2006	20	6	34	45	10
SQT 10 2008	20	8	34	45	10
SQT 10 2010	20	10	34	45	10
SQT 10 2012	20	12	34	45	10
SQT 10 2016	20	16	34	45	10
SQT 10 3206	32	6	48	63	12
SQT 10 3208	32	8	48	63	12
SQT 10 3210	32	10	48	63	12
SQT 10 3212	32	12	48	63	12
SQT 10 3216	32	16	48	63	12
SQT 10 3220	32	20	48	63	12
SQT 10 3225	32	25	48	63	12
SQT 18 4006	40	6	49	70	12
SQT 18 4008	40	8	49	70	12
SQT 18 4010	40	10	49	70	12
SQT 18 4012	40	12	49	70	12
SQT 18 4016	40	16	49	70	12
SQT 18 4020	40	20	49	70	12
SQT 18 4025	40	25	49	70	12
SQT 18 4032	40	32	49	70	12
SQT 20 4006	40	6	49	82	12
SQT 20 4008	40	8	49	82	12
SQT 20 4010	40	10	49	82	12
SQT 20 4012	40	12	49	82	12
SQT 20 4016	40	16	49	82	12
SQT 20 4020	40	20	49	82	12
SQT 20 4025	40	25	49	82	12
SQT 20 4032	40	32	49	82	12

Clamping screw



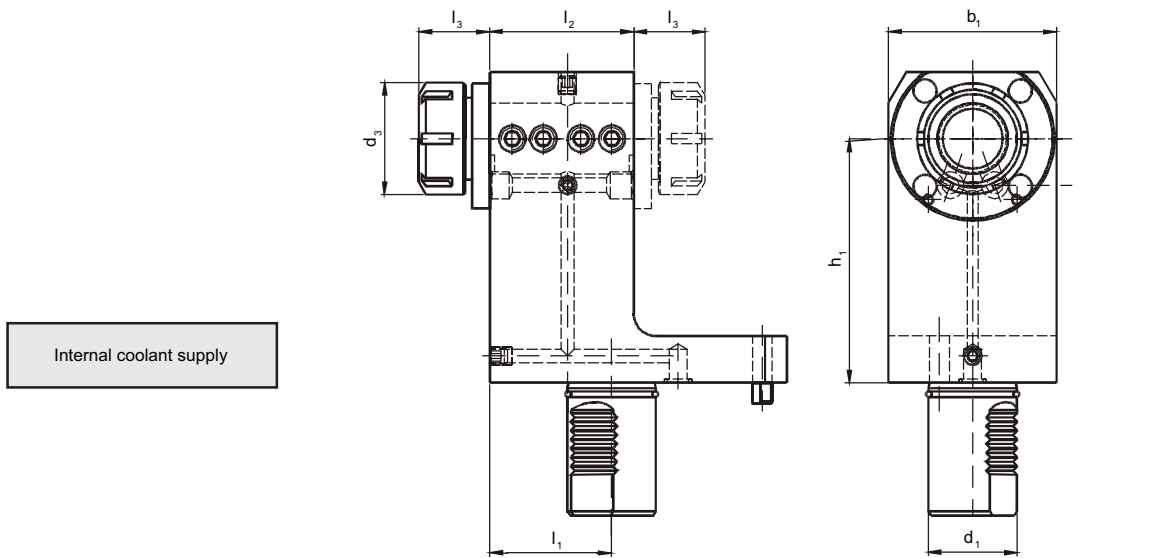
No.	M	l ₁	l ₂	SW
G 111	M8	19	11	10
G 104	M12	23	14	14

Coolant nozzle



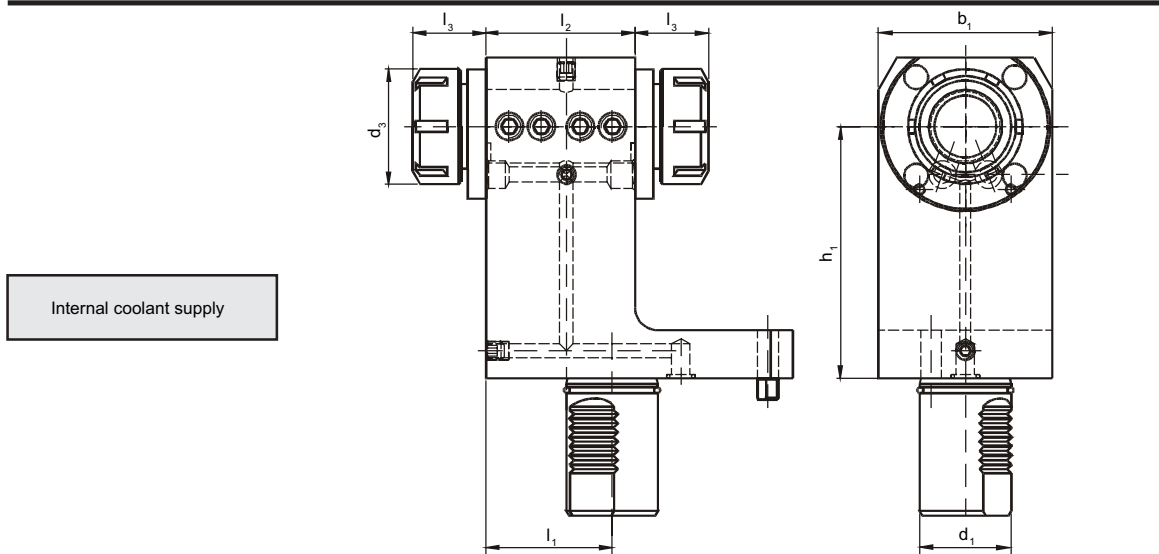
No.	QT 301

Collet chuck holder



Machine Type	No.	d ₁	d ₃	h ₁	l ₁	l ₂	l ₃	b ₁	Collet type
SQT 10M-12D / SQT 15M-16D	31.4025 SQT 10	40	42	110	55	65	37	76	250 430 E ø 2-16
SQT 15MS-16D / SQT 200M-16D	31.4032 SQT 10	40	50	110	55	65	41	76	320 470 E ø 3-20
SQT 15M-12D	31.4025 SQT 15	40	42	140	55	70	37	80	250 430 E ø 2-16
SQT 18M-12D	31.4032 SQT 15	40	50	140	55	70	41	80	320 470 E ø 3-20

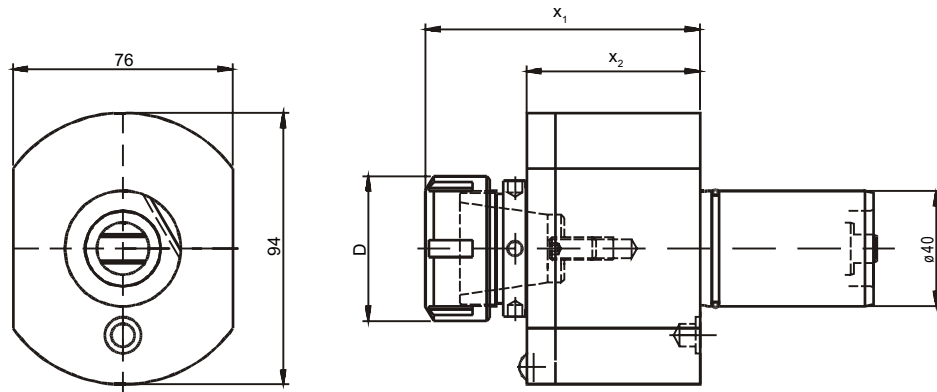
Collet chuck holder double version



Machine Type	No.	d ₁	d ₃	h ₁	l ₁	l ₂	l ₃	b ₁	Collet type
SQT 10MS-12D / SQT 100MS-12D	31.4025 DSQT 10	40	42	110	55	65	37	76	250 430 E ø 2-16
SQT 10MS-12D / SQT 100MS-12D	31.4032 DSQT 10	40	50	110	55	65	41	76	320 470 E ø 3-20
SQT 15MS-12D / SQT 18MS-12D	31.4025 DSQT 15	40	42	140	55	70	37	80	250 430 E ø 2-16
SQT 200MS-12D / SQT 250MS-12D	31.4032 DSQT 15	40	50	140	55	70	41	80	320 470 E ø 3-20



Axial drilling and milling head

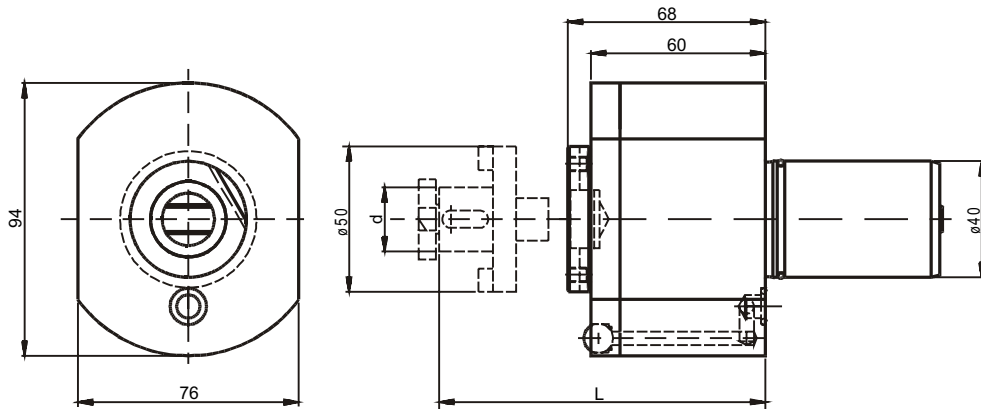


Internal cooling supply: Please add IK behind order no.

Also then y-axis adjustable available

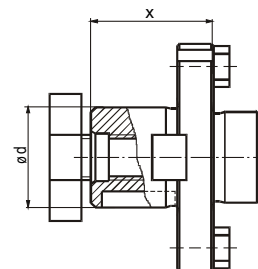
Machine type	No.	i	n _{max}	T _{max}	x ₁	x ₂	D	Collet type
SQT 10M-12D / SQT 15M-16D	40.4025 SQT 10	1:1	6000	50	92	60	42	RD/ER 25 430E (2-16)
SQT 15M-16D / SQT 200M-16D								
SQT 250M-16D								
SQT 15M-12D / SQT 18M-12D	40.4032 SQT 15	1:1	6000	50	95	60	50	RD/ER 32 470E (3-20)
SQT 200M-12D / SQT 250M-12D	40.5040 SQT 28	1:1	4000	80	136	91	63	RD/ER 40 472E (4-26)

Axial milling head modular

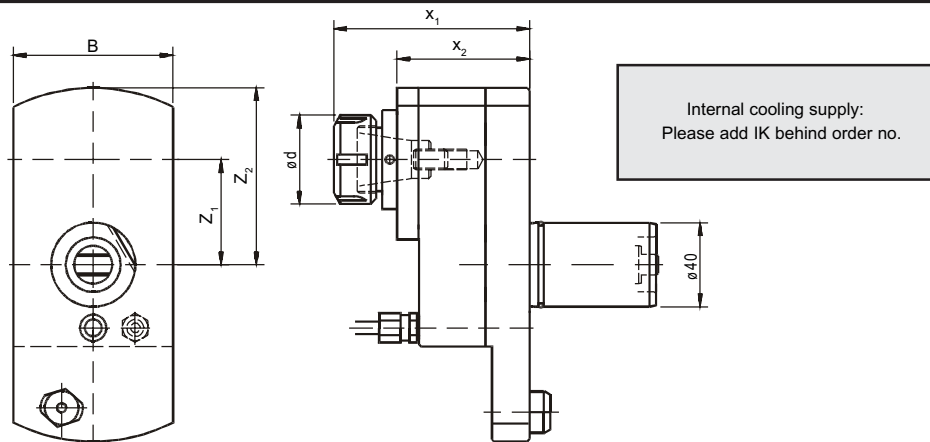


Machine type	No.	i	n _{max}	T _{max}	L	d
SQT 10M-12D / SQT 15M-16D	42.4000 SQT 10	1:1	6000	50	68 + x	see table
SQT 15M-16D / SQT 200M-16D						
SQT 250M-16D						
SQT 15M-12D / SQT 18M-12D	42.4000 SQT 15	1:1	6000	50	68 + x	
SQT 200M-12D / SQT 250M-12D						

No.	d	x
501.507	13	24
501.510	16	29
501.520	22	31
501.530	27	33

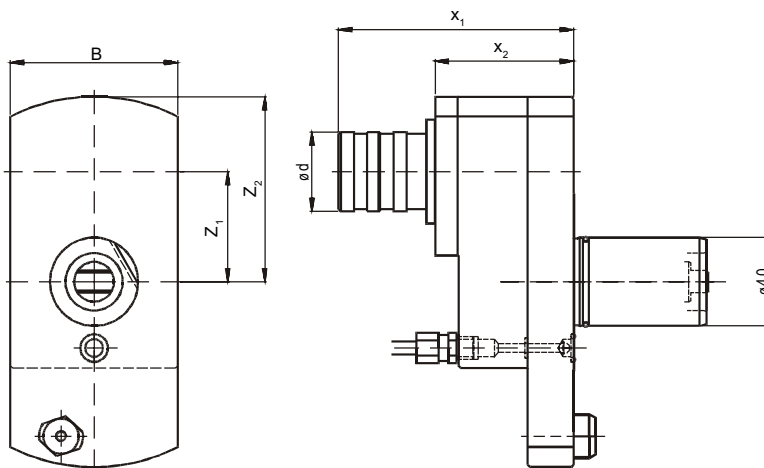


Axial drilling and milling head offset



Machine type	No.	i	n _{max}	T _{max}	x ₁	x ₂	Z ₁	Z ₂	B	d	Collet type
SQT 10M-12D	50.4025 SQT 10	1:1	6000	50	93	63	50	84	76	42	RD/ER 25 430E (2-16)
SQT 15M-16D	50.4032 SQT 10	1:1	6000	50	95	63	50	84	76	50	RD/ER 32 470E (3-20)
SQT 15M-16D	50.4025 SQT 10 IK	1:1	6000	50	120	80	50	84	76	42	RD/ER 25 430E (2-16)
SQT 200M-16D	50.4032 SQT 10 IK	1:1	6000	50	122	80	50	84	76	50	RD/ER 32 470E (3-20)
SQT 250M-16D	50.4025 SQT 10 I1	1:2	12000	25	120	80	50	84	76	42	RD/ER 25 430E (2-16)
	50.4025 SQT 15	1:1	6000	50	93	63	50	84	76	42	RD/ER 25 430E (2-16)
	50.4032 SQT 15	1:1	6000	50	95	63	50	84	76	50	RD/ER 32 470E (3-20)
SQT 15M-12D	50.4025 SQT 15 IK	1:1	6000	50	120	80	50	84	76	42	RD/ER 25 430E (2-16)
SQT 18M-12D	50.4032 SQT 15 IK	1:1	6000	50	122	80	50	84	76	50	RD/ER 32 470E (3-20)
SQT 200M-12D	50.4025 SQT 15 I1	1:2	12000	25	120	80	50	84	76	42	RD/ER 25 430E (2-16)
SQT 250M-12D	50.4025 SQT 15 I1 1751	1.75:1	6000	60	120	80	50	84	76	42	RD/ER 25 430E (2-16)
	50.4032 SQT 15 I1 1751	1.75:1	3430	60	122	80	50	84	76	50	RD/ER 32 470E (3-20)
	50.4040 SQT 28	1:1	4000	80	119	79	62.5	105	95	63	RD/ER 40 472E (4-26)

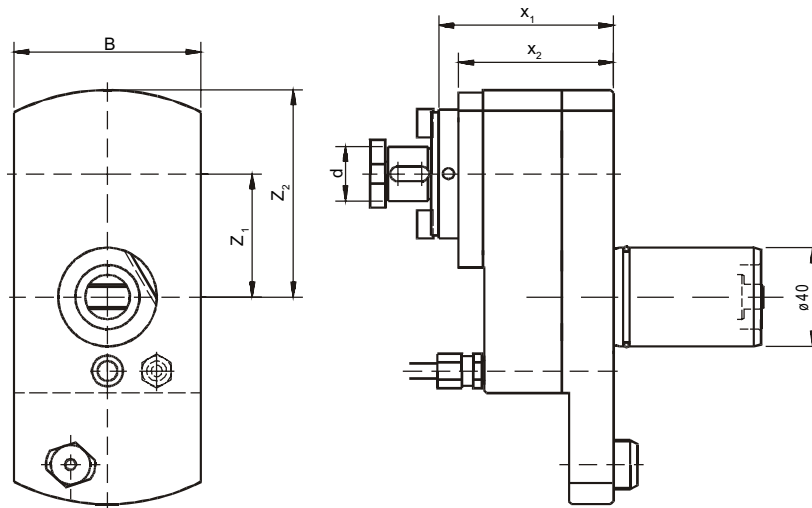
Axial tapping head



Machine type	No.	i	n _{max}	T _{max}	x ₁	x ₂	Z ₁	Z ₂	B	d	Gross size
SQT 10M-12D / SQT 15M-16D	51.4010 SQT 10	1:1	6000	50	98	63	50	84	76	M1-M10	Gr. 0, WFLK 0
SQT 15M-16D / SQT 200M-16D	51.4012 SQT 10	1:1	6000	50	107	63	50	84	76	M3-M12	Gr. 1, WFLK 1
SQT 250M-16D	51.4010 SQT 15	1:1	6000	50	98	63	50	84	76	M1-M10	Gr. 0, WFLK 0
SQT 15M-12D / SQT 18M-12D	51.4012 SQT 15	1:1	6000	50	107	63	50	84	76	M3-M12	Gr. 1, WFLK 1
SQT 200M-12D / SQT 250M-12D	51.4012 SQT 15	1:1	6000	50	107	63	50	84	76	M3-M12	Gr. 1, WFLK 1

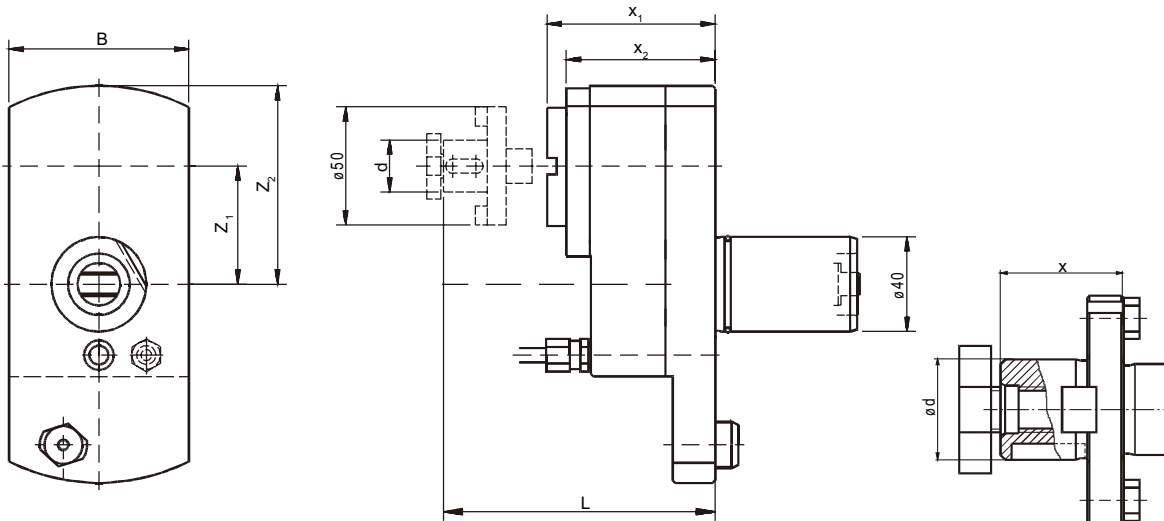


Axial milling head
offset



Machine type	No.	i	n_{max}	T_{max}	x_1	x_2	Z_1	Z_2	B	d
SQT 10M-12D	52.4016 SQT 10	1:1	6000	50	93	63	50	84	76	16
SQT 15M-16D										
SQT 15M-16D										
SQT 200M-16D										
SQT 250M-16D	52.4022 SQT 10	1:1	6000	50	95	63	50	84	76	22
SQT 15M-12D										
SQT 18M-12D										
SQT 200M-12D										
SQT 250M-12D	52.4022 SQT 15	1:1	6000	50	95	63	50	84	76	22
SQT 15M-12D										
SQT 18M-12D										
SQT 200M-12D										

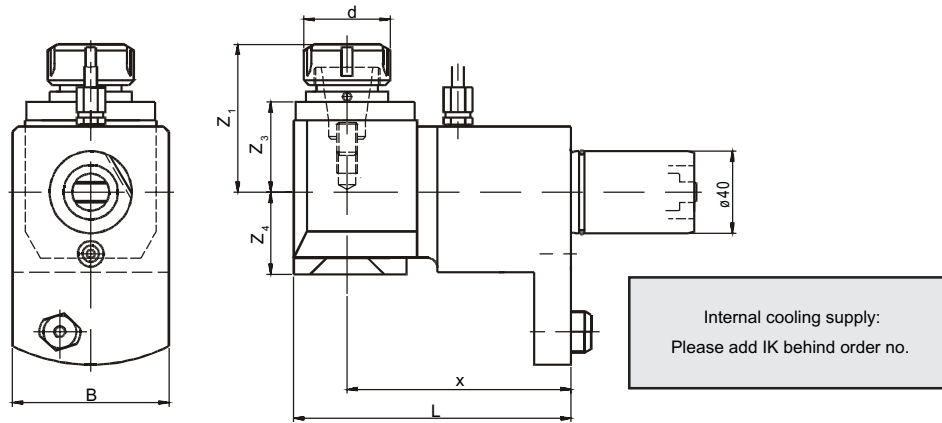
Axial milling head
offset, modular



Machine type	No.	i	n_{max}	T_{max}	x_1	x_2	Z_1	Z_2	L	d
SQT 10M-12D	52.4000 SQT 10	1:1	6000	50	71	63	50	84	X1 + x	See table
SQT 15M-16D										
SQT 15M-16D										
SQT 200M-16D										
SQT 250M-16D	52.4000 L SQT 10	1:1	6000	50	103	63	50	84	X1 + x	See table
SQT 15M-12D										
SQT 18M-12D										
SQT 200M-12D										
SQT 250M-12D	52.4000 L SQT 15	1:1	6000	50	103	63	50	84	X1 + x	See table
SQT 15M-12D										
SQT 18M-12D										
SQT 200M-12D										

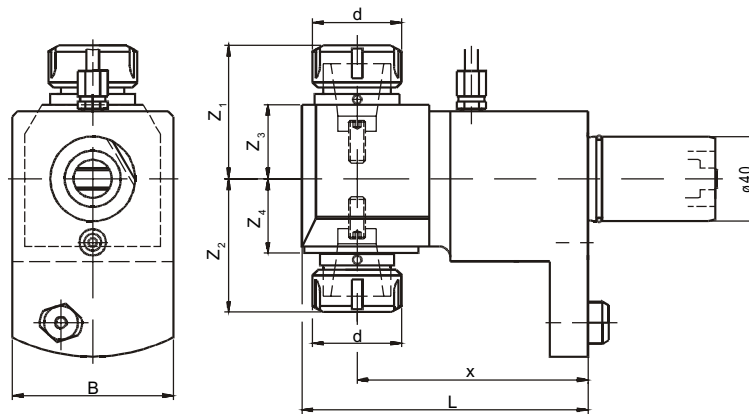
No.	d	x
501.507	13	24
501.510	16	29
501.520	22	31
501.530	27	33

Radial drilling and milling head



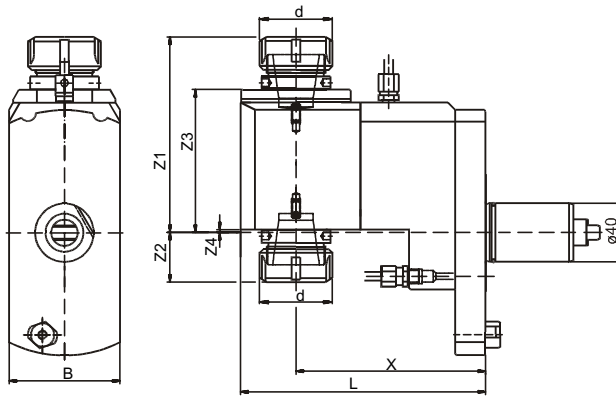
Machine type	No.	i	n_{max}	T_{max}	x	L	Z_1	Z_3	Z_4	B	d	Collet
	60.4025 SQT 10	1:1	6000	50	109	135	72	44	40	76	42	RD/ER 25 430E (2-16)
SQT 10M-12D	60.4032 SQT 10	1:1	6000	50	109	135	80	48	53	76	50	RD/ER 32 470E (3-20)
SQT 15M-16D	60.4025 SQT 10 IK	1:1	6000	50	109	135	72	44	--	76	42	RD/ER 25 430E (2-16)
SQT 15M-16D	60.4032 SQT 10 IK	1:1	6000	50	109	135	80	48	72	76	50	RD/ER 32 470E (3-20)
SQT 200M-16D	60.4020 SQT 10 I1	1:2	12000	25	109	135	65	35	40	76	35	RD/ER 20 428E (2-13)
SQT 250M-16D	60.4025 SQT 10 I2	2:1	3000	60	109	135	65	35	40	76	42	RD/ER 25 430E (2-16)
	60.4025 SQT 15	1:1	6000	50	130	168	72	44	40	76	42	RD/ER 25 430E (2-16)
	60.4032 SQT 15	1:1	6000	50	130	168	80	48	53	76	50	RD/ER 32 470E (3-20)
SQT 15M-12D	60.4025 SQT 15 IK	1:1	6000	50	130	168	72	44	--	76	42	RD/ER 25 430E (2-16)
SQT 18M-12D	60.4032 SQT 15 IK	1:1	6000	50	130	168	80	48	72	76	50	RD/ER 32 470E (3-20)
SQT 200M-12D	60.4032 SQT 15 I1	1:2	12000	25	130	168	--	--	--	76	50	RD/ER 32 470E (3-20)
SQT 250M-12D	60.4016 SQT 15 I133	1:1.33	12000	38	130	168	--	--	--	76	32	RD/ER 16 426E (1-10)
	60.5040 SQT 28	1:1	4000	80	--	--	--	--	--	--	63	RD/ER 40 472E (4-26)

Radial drilling and milling head for 1st and 2nd spindle



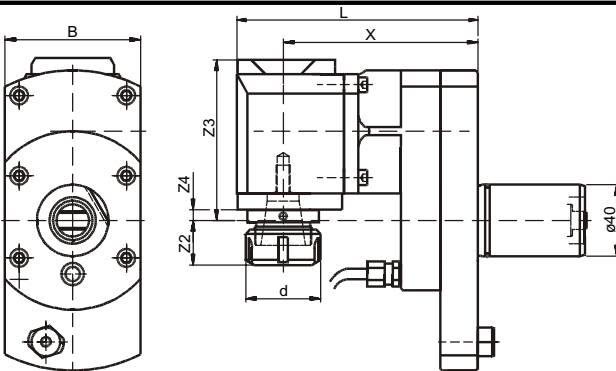
Machine type	No.	i	n_{max}	T_{max}	x	L	Z_1	Z_2	Z_3	Z_4	B	d	Collet
SQT 10MS-12D	60.4025 DSQT 10	1:1	6000	50	109	135	63	63	32	32	76	42	RD/ER 25 430E (2-16)
SQT 15MS-16D													
SQT 200MS-16D													
SQT 250MS-16D													
SQT 15MS-12D	60.4032 DSQT 15	1:1	6000	50	130	168	81	81	48	48	76	50	RD/ER 32 437E (3-20)
SQT 18MS-12D													
SQT 200MS-12D													
SQT 250MS-12D													

Radial drilling and milling head, offset
for 1st and 2nd spindle



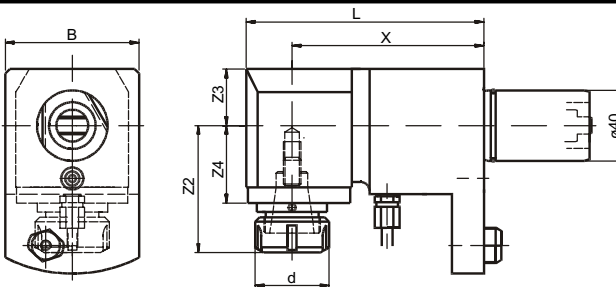
Machine type	No.	i	n _{max}	T _{max}	x	L	Z ₁	Z ₂	Z ₃	Z ₄	B	d	Collet
SQT 10MS-12D SQT 15MS-16D SQT 200MS-16D SQT 250MS-16D	80.4025 DSQT 10	1:1	6000	50	109	135	117	84	67	-15	76	42	RD/ER 25 430E (2-16)
SQT 15MS-12D SQT 18MS-12D SQT 200MS-12D SQT 250MS-12D	80.4032 DSQT 15	1:1	6000	50	130	168	131	31	98	-2	76	50	RD/ER 32 470E (3-20)

Radial drilling and milling head, offset
for 2nd spindle



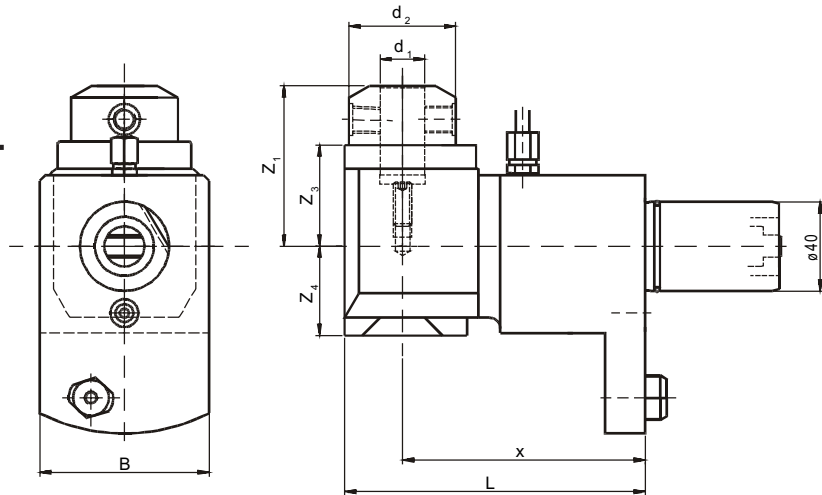
Machine type	No.	i	n _{max}	T _{max}	x	L	Z ₁	Z ₄	B	d	Collet
SQT 10MS-12D SQT 15MS-16D SQT 200MS-16D SQT 250MS-16D	80.4025 SQT 10 L	1:1	6000	50	109	135	25	-15	76	42	RD/ER 25 430E (2-16)
SQT 15MS-12D SQT 18MS-12D SQT 200MS-12D SQT 250MS-12D	80.4032 SQT 15 L	1:1	6000	50	130	168	34	-2	76	50	RD/ER 32 470E (3-20)

Radial drilling and milling head
for 2nd spindle



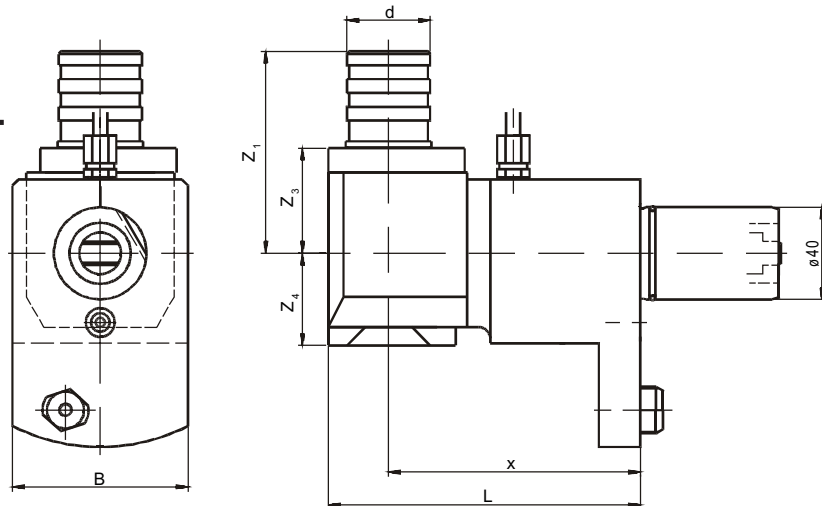
Machine type	No.	i	n _{max}	T _{max}	x	L	Z ₂	Z ₃	Z ₄	B	d	Collet
SQT 10MS-12D SQT 15MS-16D	60.4025 SQT 10 L	1:1	6000	50	109	135	72	40	44	76	42	RD/ER 25 430E (2-16)
SQT 200MS-16D SQT 250MS-16D	60.4032 SQT 10L	1:1	6000	50	109	135	80	53	48	76	50	RD/ER 32 470E (3-20)
SQT 15MS-12D SQT 18MS-12D	60.4025 SQT 15 L	1:1	6000	50	130	168	72	40	44	76	42	RD/ER 25 430E (2-16)
SQT 200MS-12D SQT 250MS-12D	60.4032 SQT 15 L	1:1	6000	50	130	168	80	53	48	76	50	RD/ER 32 470E (3-20)

Radial drilling and milling head



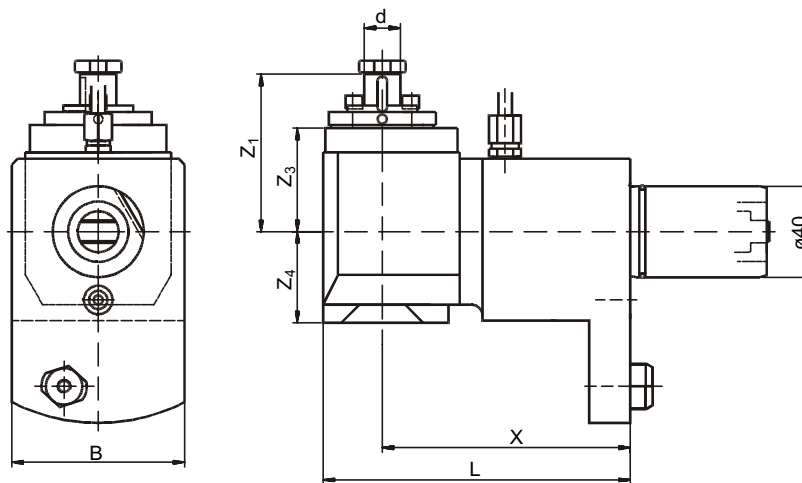
Machine type	No.	i	n_{max}	T_{max}	x	L	Z ₁	Z ₃	Z ₄	B	d ₁	d ₂
SQT 10M-12D SQT 15M-16D SQT 15M-16D	60.4020 WN SQT 10	1:1	6000	50	109	135	72	46	40	76	20	48
SQT 200M-16D SQT 250M-16D	60.4020 WN SQT 10 IK	1:1	6000	50	109	135	72	46	59	76	20	48
SQT 15M-12D SQT 18M-12D	60.4020 WN SQT 15	1:1	6000	50	130	168	87	62	54	76	20	52
SQT 200M-12D SQT 250M-12D	60.4020 WN SQT 15 IK	1:1	6000	50	130	168	87	62	72	76	20	52

Radial tapping head



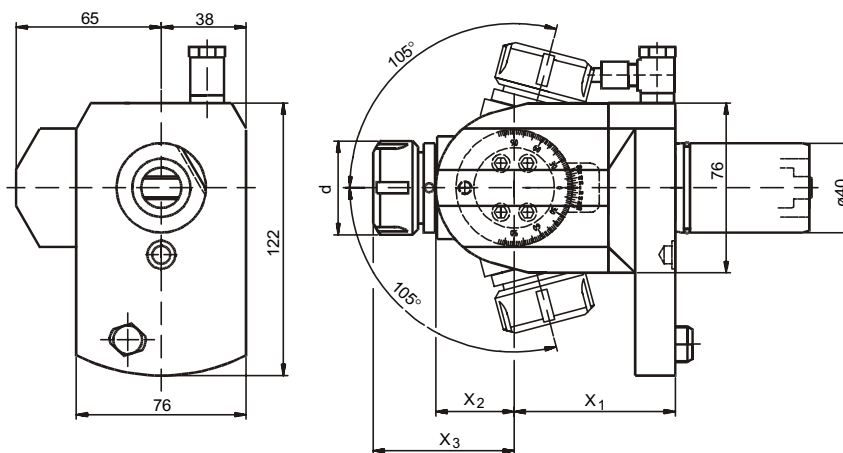
Machine type	No.	i	n_{max}	T_{max}	x	L	Z ₁	Z ₃	Z ₄	B	d	Gross size
SQT 10M-12D SQT 15M-16D SQT 15M-16D	61.4010 SQT 10	1:1	6000	50	109	135	79	46	41	76	M1-M10	Gr. 0, WFLK 0
SQT 200M-16D SQT 250M-16D	61.4012 SQT 10	1:1	6000	50	109	135	88	46	41	76	M3-M12	Gr. 1, WFLK 1
SQT 15M-12D SQT 18M-12D	61.4010 SQT 15	1:1	6000	50	130	135	81	48	53	76	M1-M10	Gr. 0, WFLK 0
SQT 200M-12D SQT 250M-12D	61.4012 SQT 15	1:1	6000	50	130	135	90	48	53	76	M3-M12	Gr. 1, WFLK 1

Radial milling head



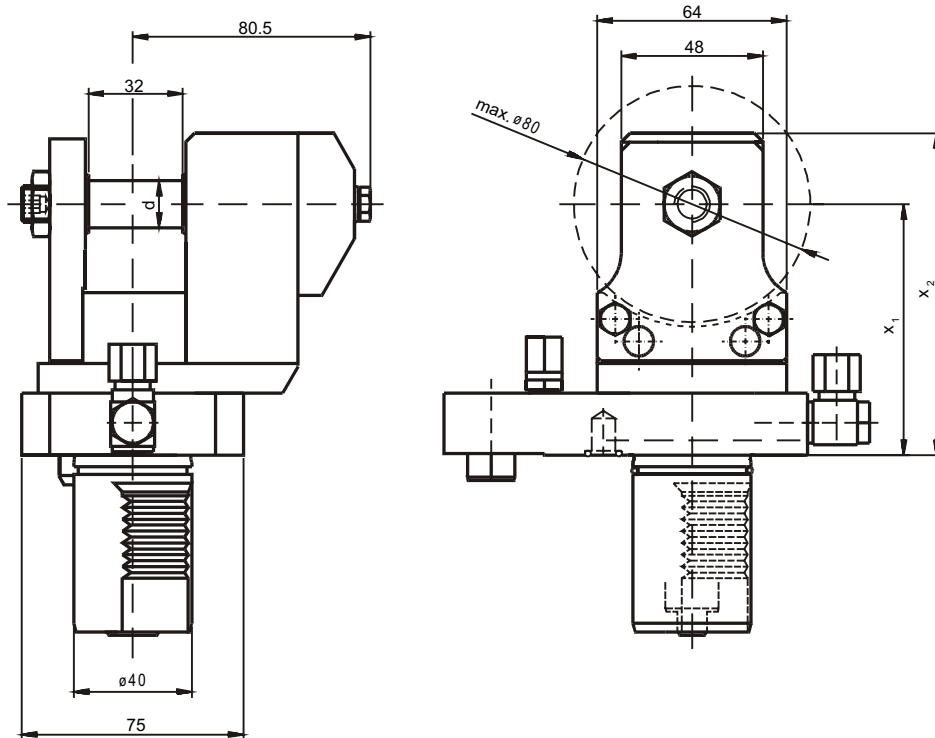
Machine type	No.	i	n _{max}	T _{max}	x	L	Z ₁	Z ₃	Z ₄	B	d
SQT 10M-12D	62.4013 SQT 10	1:1	6000	50	109	135	74	44	40	76	13
SQT 15M-16D	62.4016 SQT 10	1:1	6000	50	109	135	74	44	40	76	16
SQT 200M-16D	62.4022 SQT 10	1:1	6000	50	109	135	76	46	40	76	22
SQT 250M-16D											
SQT 15M-12D	62.4016 SQT 15	1:1	6000	50	130	168	77	48	53	76	16
SQT 18M-12D											
SQT 200M-12D	62.4022 SQT 15	1:1	6000	50	130	168	79	48	53	76	22
SQT 250M-12D											

Swivel head ± 105°



Maschine type	No.	i	n _{max}	T _{max}	x ₁	x ₂	x ₃	d	Collet
SQT 10M-12D	63.4025 K SQT 10	1:1	6000	32	72	35	63	42	RD/ER 25 430E (2-16)
SQT 15M-16D									
SQT 15M-16D									
SQT 200M-16D	63.4025 L SQT 10	1:1	6000	32	95	35	63	42	RD/ER 25 430E (2-16)
SQT 250M-16D									
SQT 15M-12D	63.4025 K SQT 15	1:1	6000	32	72	35	63	42	RD/ER 25 430E (2-16)
SQT 18M-12D									
SQT 200M-12D	63.4025 L SQT 15	1:1	6000	32	122	35	63	42	RD/ER 25 430E (2-16)
SQT 250M-12D	63.4025 SQT 15 X 95	1:1	6000	32	95	35	63	42	RD/ER 25 430E (2-16)

Radial drilling head
for side milling cutters



SQT-Series							
Machine type	No.	i	n_{max}	T_{max}	x_1	x_2	d
SQT 10M-12D	64.4010 SQT 10	3:1	6000	50	85	109	10
SQT 15M-16D	64.4013 SQT 10	3:1	6000	50	85	109	13
SQT 15M-16D	64.4016 SQT 10	3:1	6000	50	85	109	16
SQT 200M-16D	64.4022 SQT 10	3:1	6000	50	85	109	22
SQT 15M-12D	64.4010 SQT 15	3:1	6000	50	135	109	10
SQT 18M-12D	64.4013 SQT 15	3:1	6000	50	135	109	13
SQT 200M-12D	64.4016 SQT 15	3:1	6000	50	135	109	16
SQT 250M-12D	64.4022 SQT 15	3:1	6000	50	135	109	22

MP-Series							
Machine type	No.	i	n_{max}	T_{max}	x_1	x_2	d
MP 410N-12D	64.4010 MP 610	3:1	6000	50	85	109	10
MP 415N-12D	64.4013 MP 610	3:1	6000	50	85	109	13
MP 610N-12D	64.4016 MP 610	3:1	6000	50	85	109	16
MP 620N-16D	64.4016 MP 610	3:1	6000	50	85	109	16
MP 420N-12D	64.4010 MP 620	3:1	6000	50	135	109	10
MP 620-12D	64.4013 MP 620	3:1	6000	50	135	109	13
MP 620N-12D	64.4013 MP 620	3:1	6000	50	135	109	13
MP 6200-12D	64.4016 MP 620	3:1	6000	50	135	109	16

ITI QC VARIA® *Universal Modular Tool Holding System*



GIVE US YOUR CNC LATHE AND JUST 7 SECONDS TO PROVE A POINT ...

Because with just one single-point clamp in the patented ITI QC-Varia tool holding system, all it takes is about 7 seconds to exchange tools on most CNC lathes.

A simple half turn to the left releases used tools, a half turn to the right secures new ones.

And on many lathes, when the tool spindle stops, a spring-loaded detent automatically orients the clamp towards the operator. There's no wasted time searching for the clamp and, more importantly, no need to grab sharp or broken tools to rotate the spindle manually.



There's more. Varia's compact design provides a greater working envelope than other modular systems. And with dedication to engineering excellence, you're assured years of trouble-free performance.



ITI TOOLING COMPANY INC.

*Your Single Source for High-Quality
CNC Lathe Tool Holders and Spindle Units*

www.ititooling.com

- DAVID BROWN • OLIVER • HIYACHISEIKI
• SANYO • BARUFFALDI •
HURCO • PROBE • BENZINGER
• WILCREON • TERRIBILLAGUN
• SCHENKER • HYUNDAI-KIA
• GAMA • BIGLIA • REGAT
• SANI • DICER • ENCINNATI •
• HRYK • CAE • GUYEN • JINN
• • TOSUWA • CLAUSING
• JOHNFORD • TONGIL •
• TASCOT • JHIL • LAMSON •
• ICHIOKI • IMBOMI • KIA
• FANUC • DOOSAN • HUNGORE
• • YOSHIMIZU • TIRATI
• FARGO • CADWELL • SUGAMI
• TAYLOR STONE • LONGE &
• SHIPLEY • VITON • ESCO •
• KINGSTON • MAIRA • SOUTH
• ZERD • WASHNO • EUROTECH
• MAZAK • WELER • FANAR
• MIGHTY SPINNER • FAMOT
• MILITRONICS • FORTUNE •
• MIYAMA • G.S. •
• • • FEMEL
• • • •
• • • • •
• • • • •
• • • • •
• • • • •
• • • • •



ITI TOOLING COMPANY INC.

Your Single Source For Top Quality Tool Holders
And Spindle Units For Most CNC Lathes.