

MORI SEIKI



SL200
SL200S
SL25
SL250
SL250S

GET
THE
MOST
FROM
YOUR
TURNING
CENTER



High Precision Tool Holders And Spindle Units
For Most CNC Turning Machines

BARON'S OLIVER • HITACHI SEIKI
 • OMNIFURN • BARUFFALDI •
 HURCO • PROEBA • BENZINGER
 • THWACKERON • REPUBLIC LAGUN
 • BOEHRINGER • HYUNDAI KIA
 • TOMI • BIGLIA • IKEGAI •
 SMT TRICEPT • CINCINNATI •
 INDEX • STAR • CITIZEN • IRN
 FA • DUGSAWA • CLAUSING
 • JOHN FORD • TONGIL •
 DREWOOD • JONES & LAMSON •
 TORNOS • DOOSAN • KIA •
 TOSHIBA • DOOSAN INFRACORE
 • KINGSBURY • TRAUB •
 EMKO • LEADWELL • TSUGAMI
 • PICO MILLER • LODGE &
 SHIPLEY • VICTOR • ESCO •
 KINGSTON • MITRA • SOUTH
 BEND • WASING • EUROTECH
 • MAZAK • WEILER • FAMAR
 • MIGHTY SPINNER • FAMEI
 • MILLTRONICS • FORTUNE •
 MIYANO • GUNGS & LEWIS
 MC • BOLDEN •
 • GRA...
 NEW
 BRITAIN • HARDINGE • DRUMA
 • BARON'S OLIVER • HITACHI
 SEIKI • HURCO • PROEBA
 • BENZINGER • CLAUSING
 • JOHN FORD • TONGIL •

www.ititooling.com



ITI TOOLING COMPANY INC. is a unique and experienced supply company, offering an extensive range of top-quality "Driven" and "Static" tool holding solutions for most CNC Lathes from around the world.

We supply the world's finest CNC Lathe Tool Holders, manufactured by companies who have been recognized as industry leaders for decades. Our clients have gained confidence in the quality and "know-how" that comes from our many years experience addressing a broad spectrum of applications in all industries. Applications that utilize not only our standard Tool Holders but also "Multi-Head" and "Multi-Spindle" Units, along with other custom designs, which have economically solved problems for today's more demanding, multi-tasking and highly competitive manufacturing environments.

We offer precision, top quality toolholders and spindle units designed as Bolt-on, VDI and other styles of mounting systems that are available and manufactured to meet the highest standards of quality using only the finest materials available.



ITI TOOLING COMPANY INC.

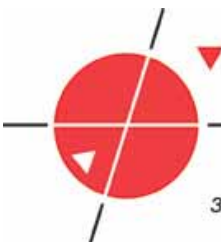
37 Orchard St., Ramsey, N.J. 07446 1-888-88-INDEX



What we are made of...

Our focus is on the highest quality standards and utmost commitment to ensure the optimal design of our products in form and function. For this purpose, we systematically invest in state-of-the-art production lines and develop methods for quality assurance in cooperation with external institutions.

Competence and reliability in our advisory services, our daily communication and project management – these are the core elements convincing our customers of our performance and services over and over again.

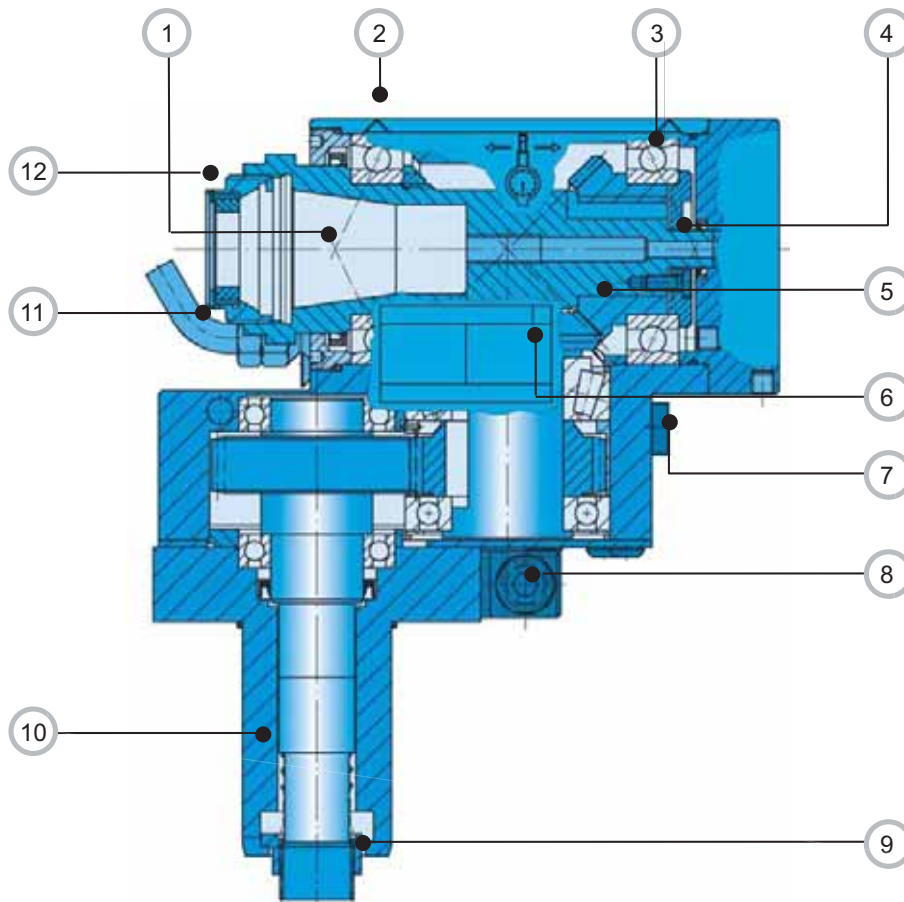


ITI TOOLING COMPANY

A Division of **INDEXING TECHNOLOGIES INC.**

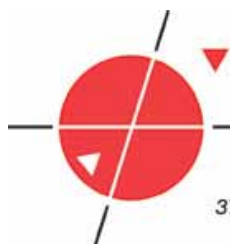
37 Orchard Street., Ramsey, NJ. 07446 - Phone (201) 934-6333 - Fax (201) 934-6333 www.indexingtechnologies.com
www.ititooling.com

Twelve reasons to specify ITI Tooling Co.



- | | |
|---|--|
| <p>① Highest possible rotational accuracy.</p> <p>② Qualified datum surface for rapid alignment.</p> <p>③ Optimum pre-loaded bearing configurations for maximum stiffness ■</p> <p>④ Patented high-pressure internal coolant delivery system.</p> <p>⑤ High-precision gear train of optimum power and performance.</p> <p>⑥ Laser etched identification plate.</p> <p>⑦ Independent external coolant connection ■</p> <p>⑧ Unique “rapid-set” spindle alignment device to minimize tool change and set-up time.</p> | <p>⑨ Patented spindle orientation detent for rapid tool drive engagement</p> <p>⑩ Many units offered with a Universal mounting shank with double tooth rack for right-hand or left-hand operation</p> <p>⑪ External coolant supply – can be individually fitted</p> <p>⑫ Many units have a recessed collet clamping nit ensuring maximum stiffness and an optimum interference free zone</p> |
|---|--|

All spindle units undergo stringent monitoring during a running-in procedure testing, including thermal testing and prior to delivery, to ensure guaranteed performance immediately upon being placed into service.



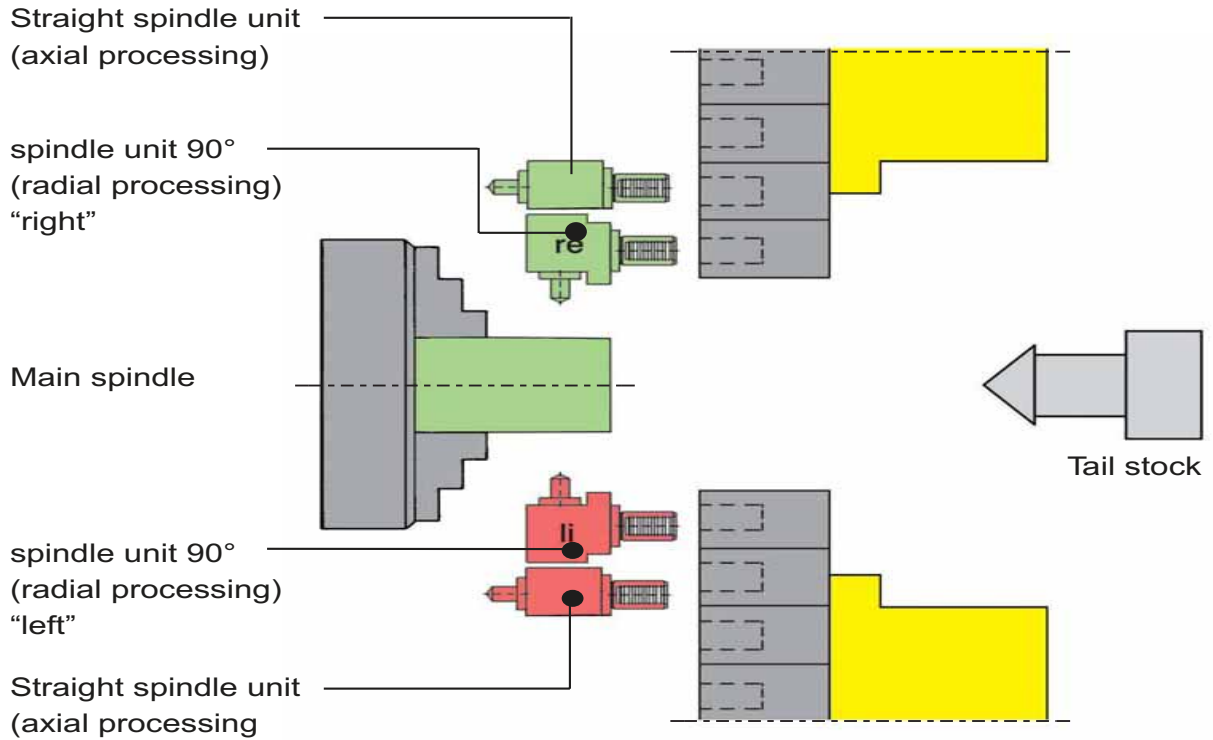
ITI TOOLING COMPANY

A Division of **INDEXING TECHNOLOGIES INC.**

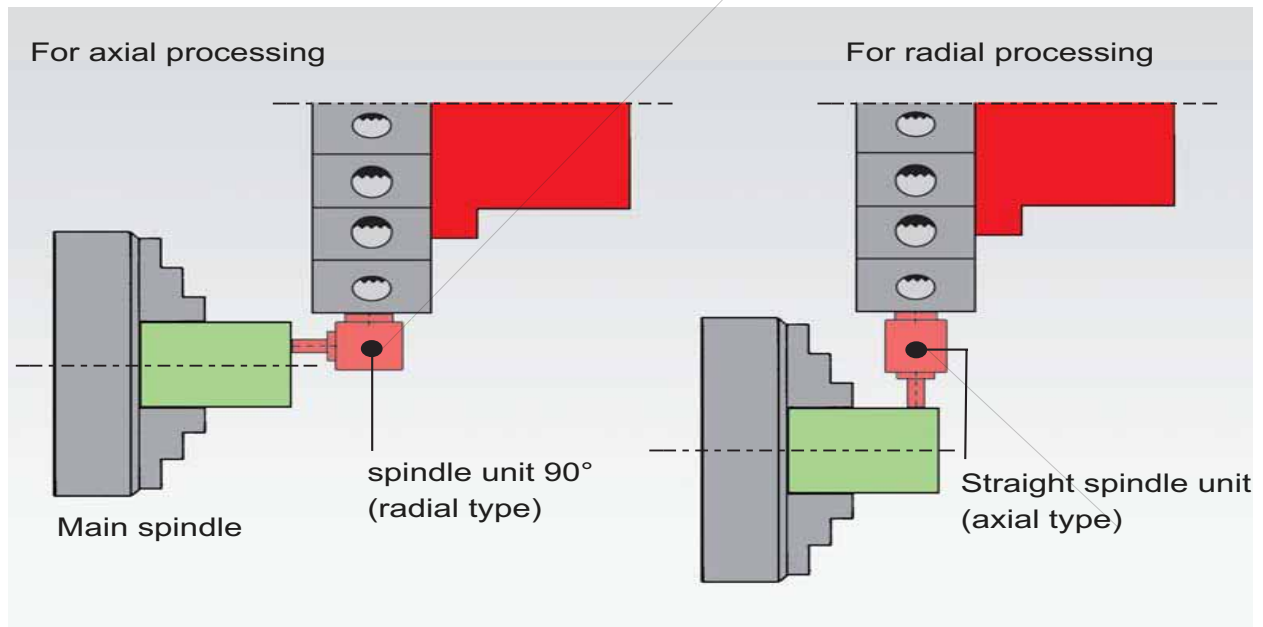
37 Orchard Street., Ramsey, NJ. 07446 - Phone (201) 934-6333 - Fax (201) 934-6333 www.indexingtechnologies.com
www.ititooling.com

1. Axial mounting on disc turrets

Orientation and designation of spindle units



2. Radial mounting on disc turrets

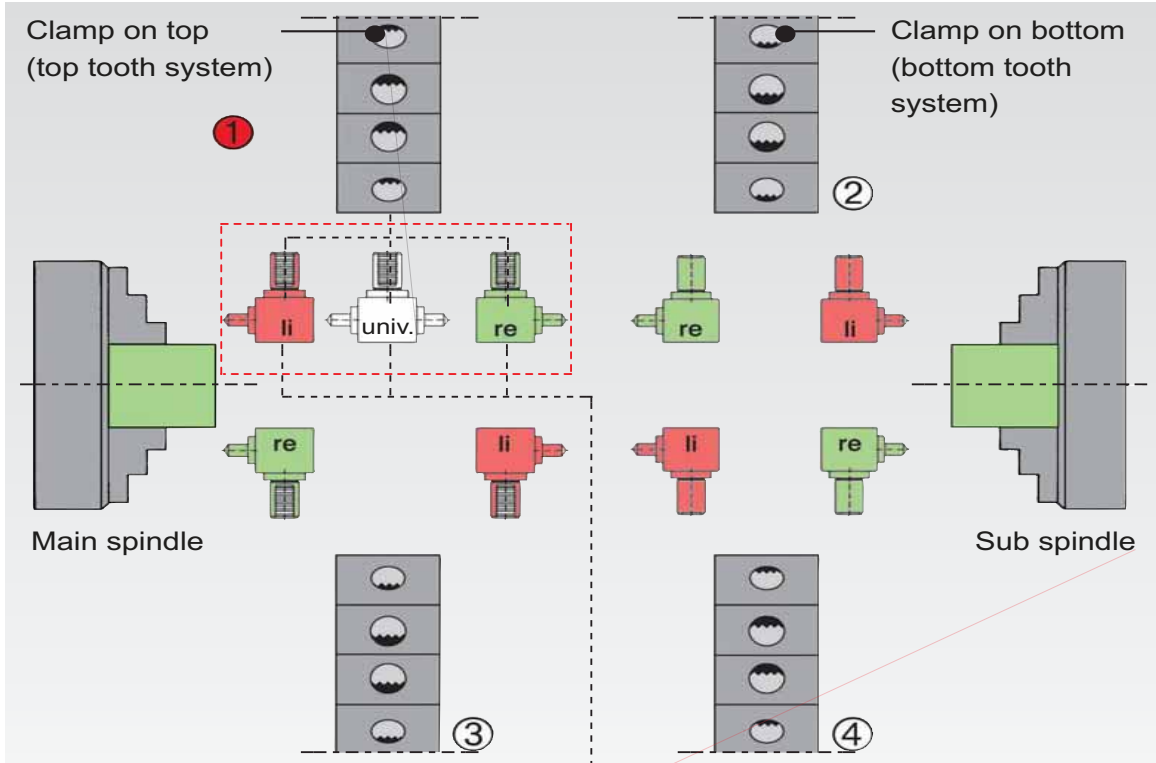


ITI TOOLING COMPANY

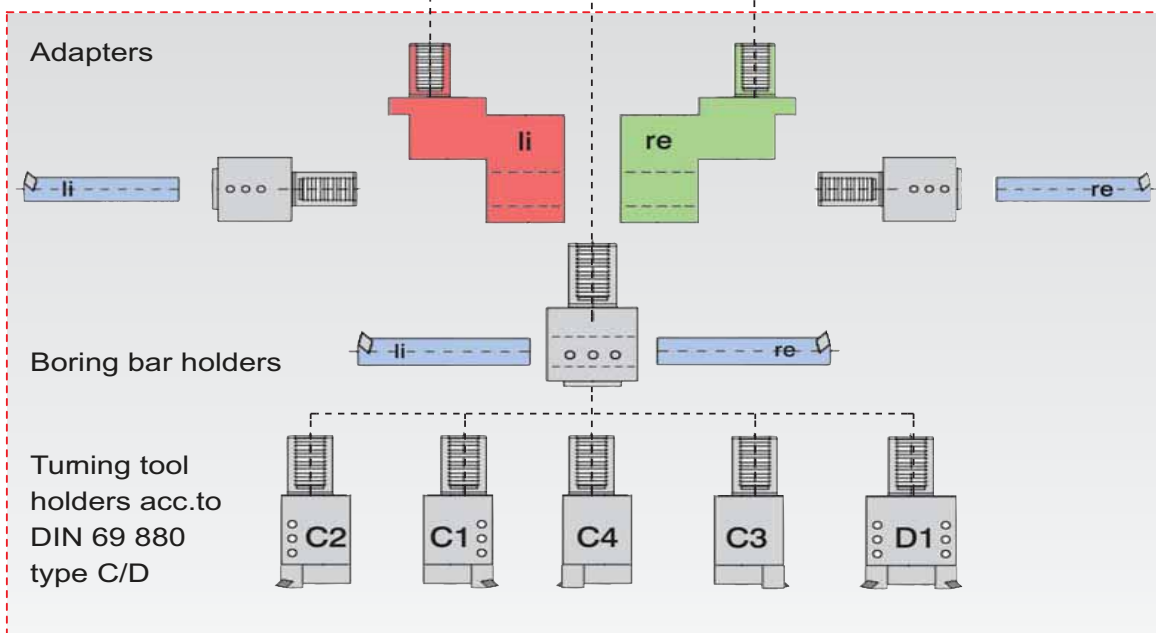
A Division of **INDEXING TECHNOLOGIES INC.**

37 Orchard Street., Ramsey, NJ. 07446 - Phone (201) 934-6333 - Fax (201) 934-6333 www.indexingtechnologies.com
www.ititooling.com

Right / left / universal designation for spindle units



① Tool holder designation



ITI TOOLING COMPANY

A Division of **INDEXING TECHNOLOGIES INC.**

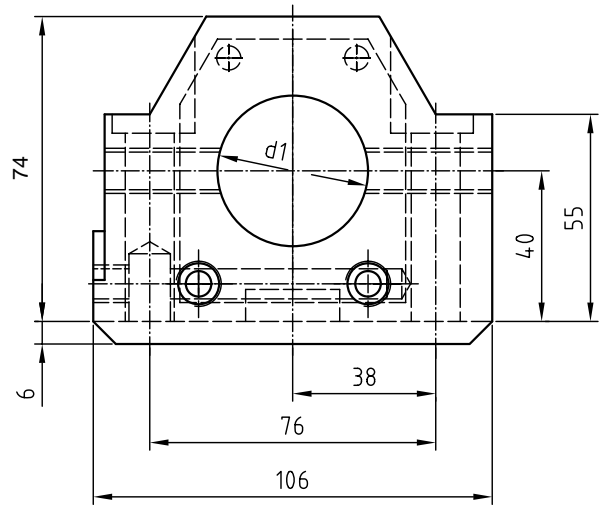
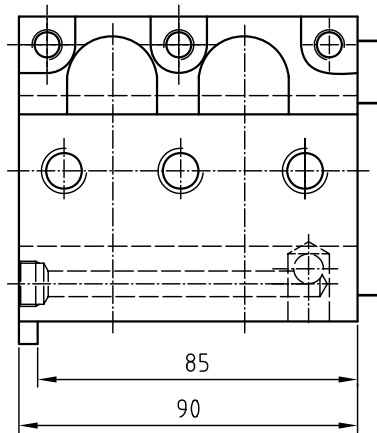
37 Orchard Street., Ramsey, NJ. 07446 - Phone (201) 934-6333 - Fax (201) 934-6333 www.indexingtechnologies.com
www.ititooling.com

Bohrstangenhalter Boring bar holder Porte barre d'alesage

Mori Seiki SL200MC - 200SMC - 250MC - 250SMC (12 Stationen)

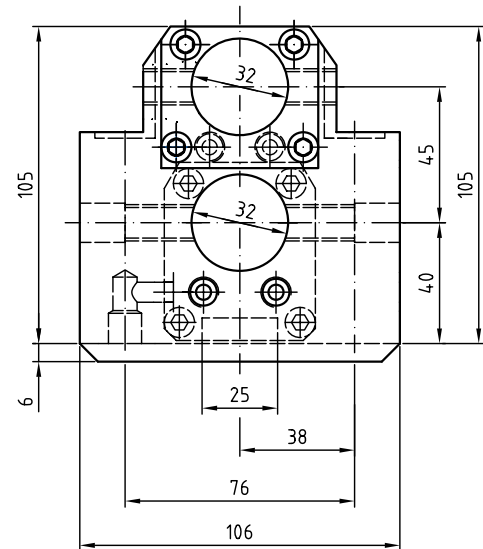
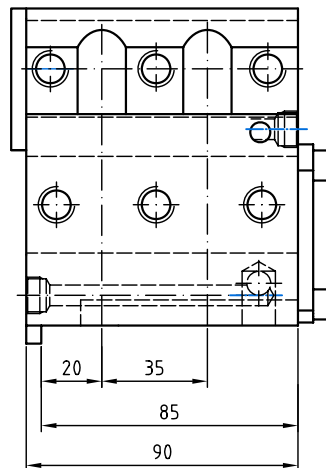
Standard

Bestell Nr. Order No.	d1
19.BMT20SL200	20
19.BMT25SL200	25
19.BMT32SL200	32
19.BMT40SL200	40
19.BMT45SL200	45
19.BMT50SL200	50



Doppelt / double

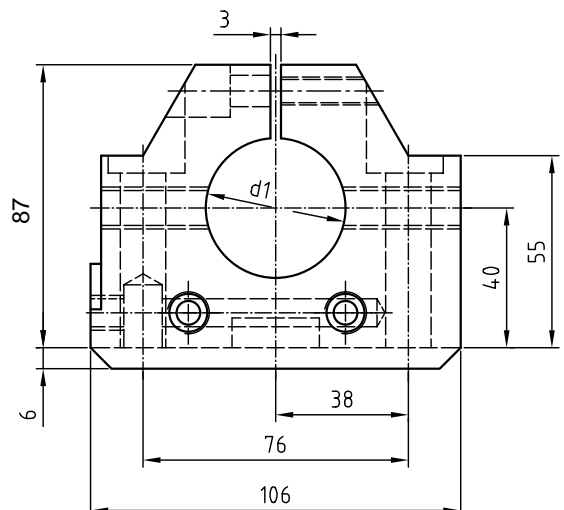
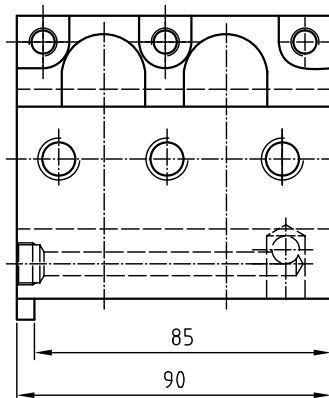
Bestell Nr. Order No.	d
19.BMT32DSL200	32
19.BMT32DASL200 zurückgesetzt - offset (nicht gezeichnet - undrawn)	32



für Innen- und Außenkühlung
for internal- and external cooling

Geschlitzt / slitted

Bestell Nr. Order No.	d1
19.BMT25SL200S01	25
19.BMT32SL200S01	32



für Innen- und Außenkühlung
for internal- and external cooling

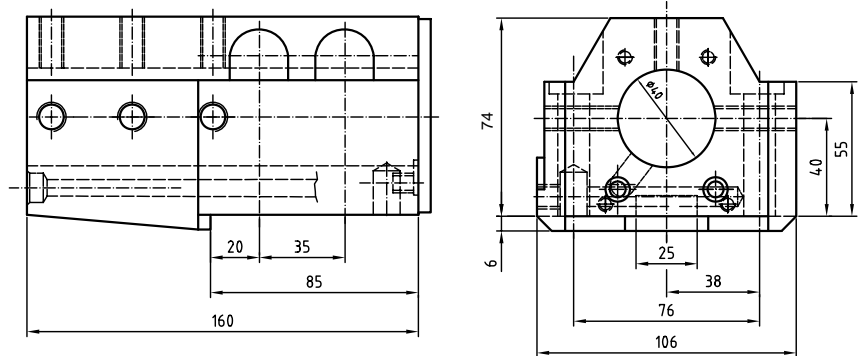
Bohrstangenhalter Boring bar holder Porte barre d'alesage

Mori Seiki SL200MC - 200SMC - 250MC - 250SMC (12 Stationen)

lange Ausführung /
long version

Bestell Nr.	
Order No.	d1
19.BMT40LSL200	40
19.BMT50LSL200	40

für Innen- und Außenkühlung
for internal- and external cooling



Drehhalter

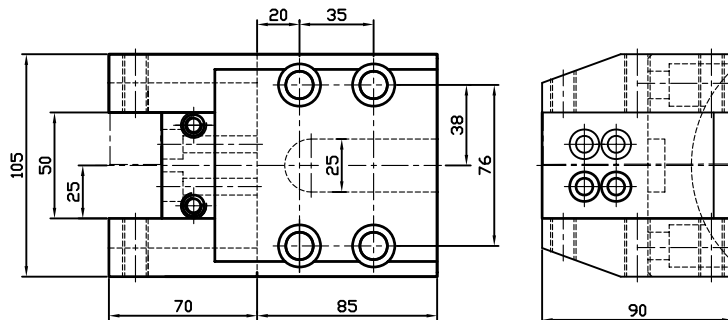
Turning toolholder

Porte outil

Standard

Bestell Nr.	
Order No.	
1.BMT25SL200	

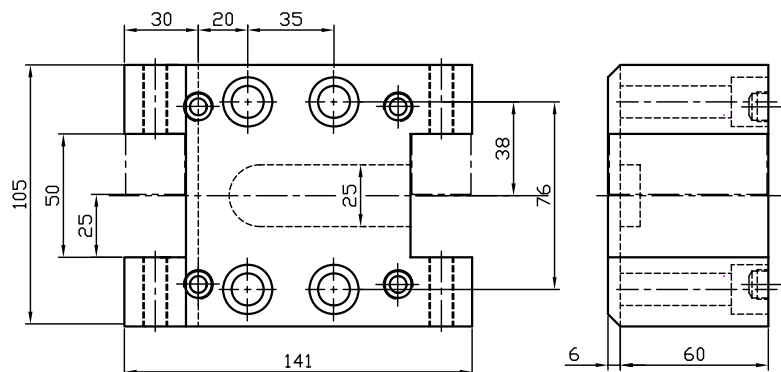
für Recht- und Linkslauf
for right- and left rotating direction



Doppelt / double

Bestell Nr.	
Order No.	
15.BMT25SL200	

für Recht- und Linkslauf
for right- and left rotating direction



Drehhalter

Turning toolholder

Porte outil

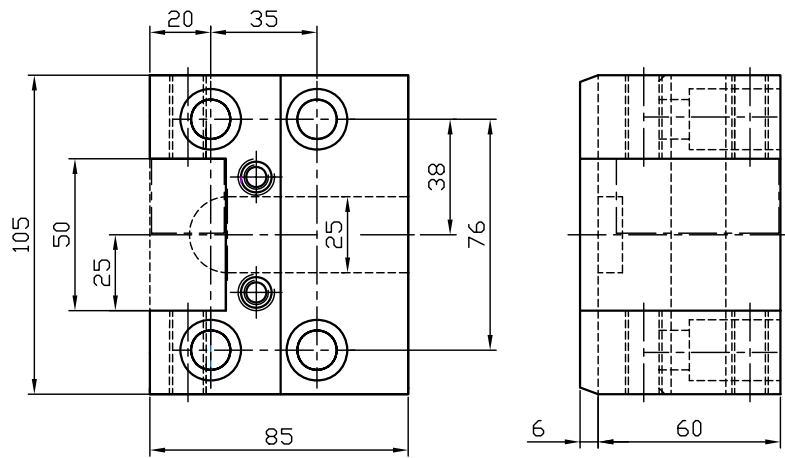
Mori Seiki SL200MC - 200SMC - 250MC - 250SMC (12 Stationen)

Kurze Ausführung
Short version

Bestell Nr.
Order No.

1.BMT25KSL200

für Recht- und Linkslauf
for right- and left rotating direction

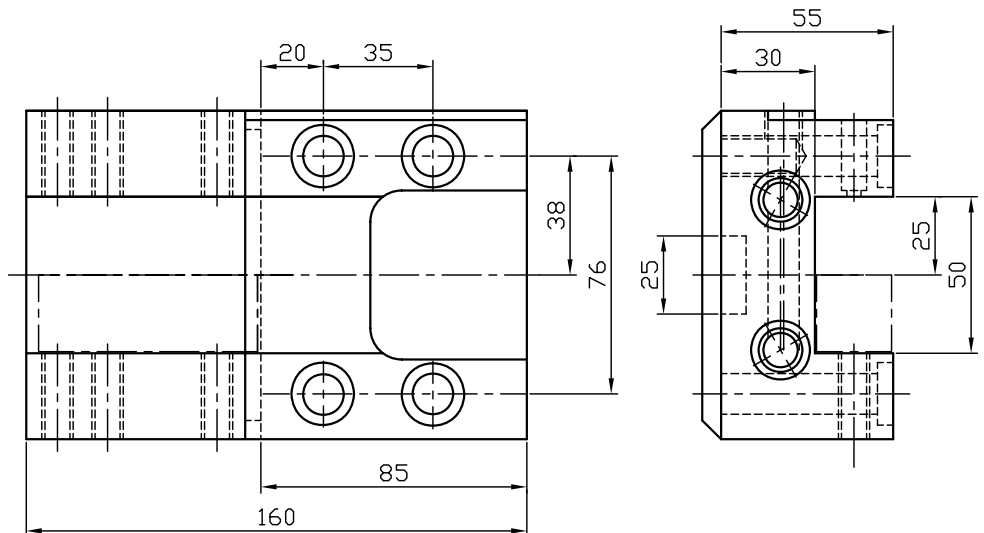


Lange Ausführung
long version

Bestell Nr.
Order No.

5.BMT25LSL200

für Recht- und Linkslauf
for right- and left rotating direction



Abstechhalter

Infeed toolholder

Porte outil de plongée

höhenverstellbar

height adjustable

hauteur réglable

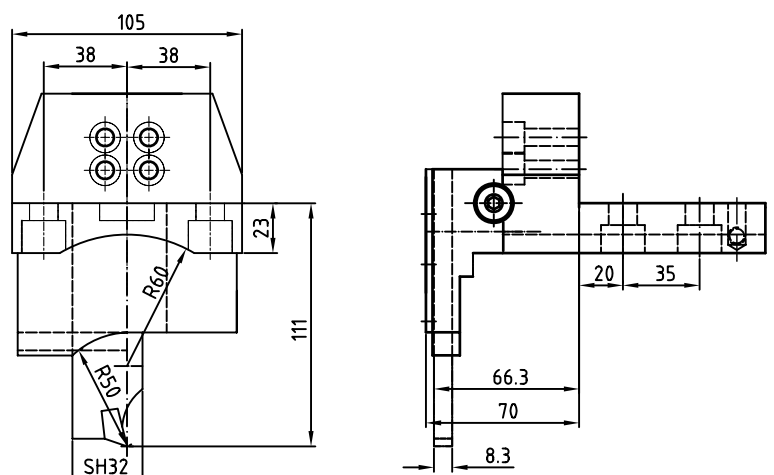
für Rechts u. Linkslauf
for right and left rotating direction

für Recht- und Linkslauf
for right- and left rotating direction

Order No.

32.BMT32SL200ÜK SH32 Rechtslauf (wie abgebildet)

32.BMT32SL200 SH32 Linkslauf



Axial Bohr-
und Fräskopf

Axial drilling and
milling head

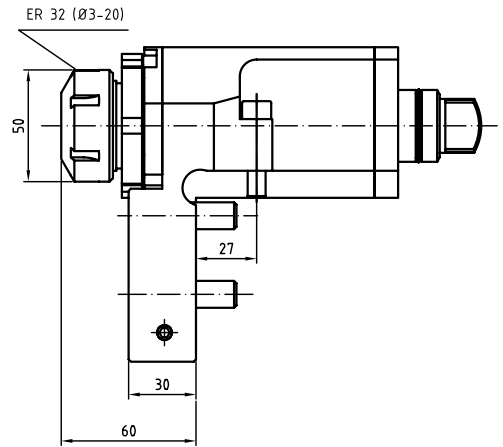
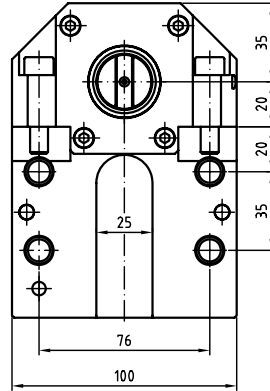
Tête de perçage et
fraisage

Mori Seiki SL200MC - 200SMC - 250MC - 250SMC (12 Stationen)

Bestell Nr.
Order No.

40.3232SL200BMT mit ext. Kühlung /
with ext. coolant

40.3232SL200BMTIK mit ext. u. int. Kühlung /
with ext. and int. coolant



Radial Bohr-
und Fräskopf

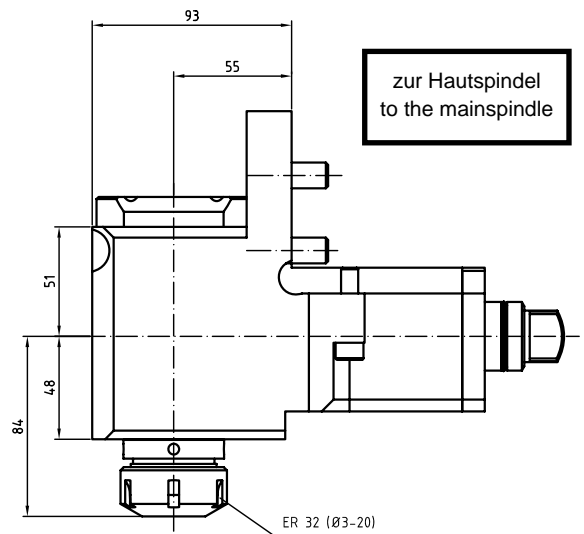
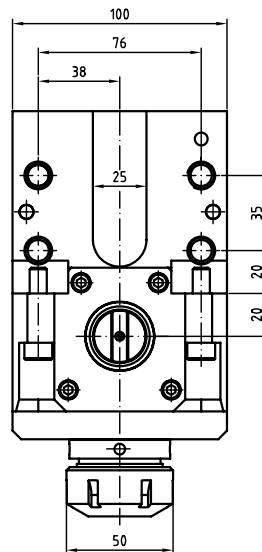
Radial drilling and
milling head

Tête de perçage et
fraisage radial

Bestell Nr.
Order No.

60.3232SL200BMT mit ext. Kühlung /
with ext. coolant

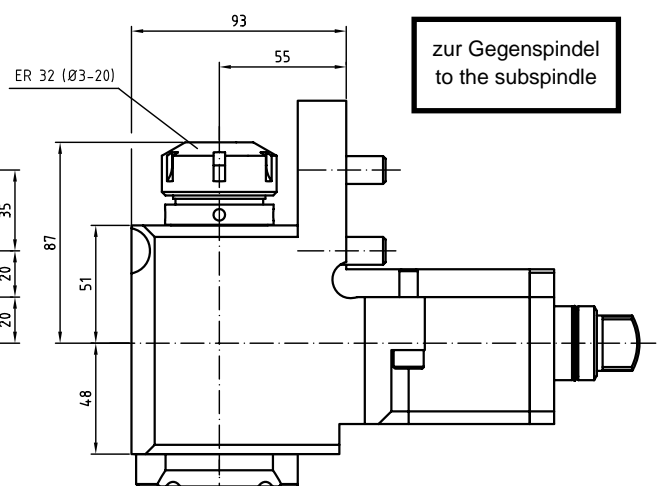
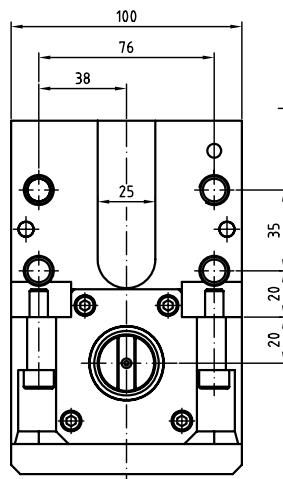
60.3232SL200BMTIK mit ext. u. int. Kühlung /
with ext. and int. coolant



Bestell Nr.
Order No.

60.3232SL200BMTL mit ext. Kühlung /
with ext. coolant

60.3232SL200BMTLIK mit ext. u. int. Kühlung /
with ext. and int. coolant



Radial Bohr-
und Fräskopf

Radial drilling and
milling head

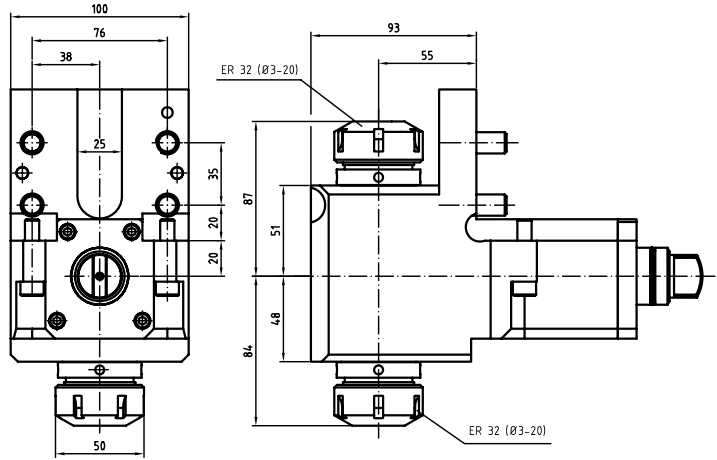
Tête de perçage et
fraisage radial

Mori Seiki SL200MC - 200SMC - 250MC - 250SMC (12 Stationen)

Doppelt / double

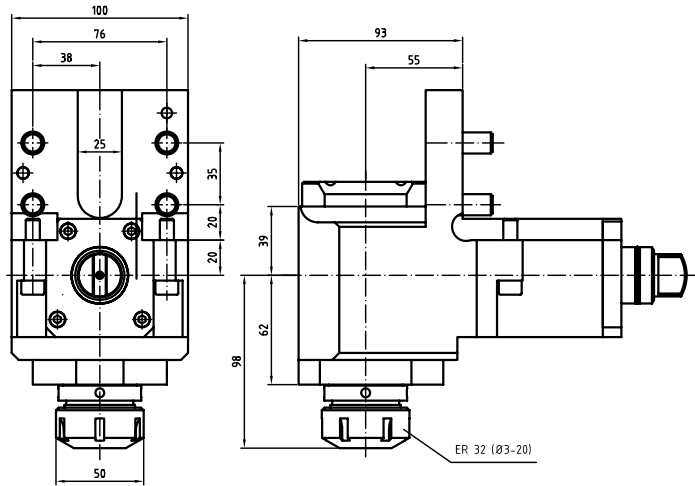
Bestell Nr.
Order No.

60.3232DSL200BMT



Bestell Nr.
Order No.

60.3232KRSL200BMT



Schwenkkopf
±105°

Swivel level
±105°

Tête pivotante
±105°

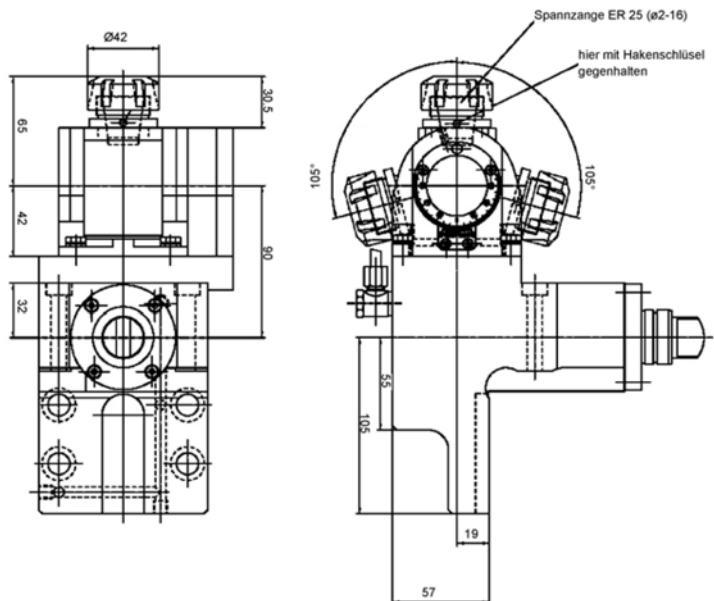
Bestell Nr.
Order No.

Spzg Winkel
i collet angle

63.3225SL200BMT 1:1 ER25 ±105°
wie gezeichnet

63.3225SL200BMTS01 1:1 ER25 +135°/-60°
ohne Abbildung

63.3225SL200BMT 1:1 ER25 ±105°
ohne Abbildung



ITI QC VARIA[®] *Universal Modular Tool Holding System*



GIVE US YOUR CNC LATHE AND JUST 7 SECONDS TO PROVE A POINT ...

Because with just one single-point clamp in the patented ITI QC-Varia tool holding system, all it takes is about 7 seconds to exchange tools on most CNC lathes.

A simple half turn to the left releases used tools, a half turn to the right secures new ones.

And on many lathes, when the tool spindle stops, a spring-loaded detent automatically orients the clamp screw towards the operator. There's no wasted time searching for the clamp and, more importantly, no need to grab sharp or broken tools to rotate the spindle manually.



There's more. Varia's compact design provides a greater working envelope than other modular systems. And with dedication to engineering excellence, you're assured years of trouble-free performance.



ITI TOOLING COMPANY INC.

***Your Single Source for High-Quality
CNC Lathe Tool Holders and Spindle Units***

www.ititooling.com

HARDINGE • OLIVER • HITACHI SEIKI
 • OMTURN • BARUFFALDI •
 MURCO • PROBE • BENZINGER
 • INVACHRON • FERRILLI CLAGN
 • BOERRINGER • HYUNDAI KIA
 • TOMI • BUBA • REGAT •
 SAI TRICEPT • CINCINNATI •
 INDEX • STAB • CITIZEN • JINN
 FA • TRUSAWA • CLAUSING
 • JOHN FORD • TONGIL •
 DAEMOO • JONES & LAMSON •
 TORNO • DOOSAN • KIA •
 TOSHIBA • DOOSAN INFRACORE
 • KINGSMURY • TRAMB •
 ENDAG • LEADWELL • TSUGAMI
 • EMCO STAYER • LODGE &
 SHIPLEY • VICTOR • ESCO •
 KINGSTON • MATRA • SOUTH
 BEND • WASHINO • EBROTECH
 • MAZAK • WEILER • FAMAR
 • MIGHTY SPINNER • FAMOT
 • MILITRONICS • FORTUNE •
 MIYAN • GS &
 • DEMEL
 • ORATEC
 • MOORE • BRAUN
 • NUSAMURA • HASS • NIEM
 • URTAIN • HARDINGE • ORIMA
 • BARONS • OLIVER • HITACHI
 SEIKI • MURCO • PROBE
 • BENZINGER • CLAUSING
 • JOHN FORD • TONGIL •



ITI TOOLING COMPANY INC.

*Your Single Source For Top Quality Tool Holders
 And Spindle Units For Most CNC Lathes.*

1-888-88-INDEX