

Driven Tool Holders for  
**MORI SEIKI**  
ZT2500

**GET  
THE  
MOST  
FROM  
YOUR  
TURNING  
CENTER**



*High Precision Tool Holders And Spindle Units  
For Most CNC Turning Machines*

- BARDONS & OLIVER • HITACHI SEIKI
- OMNIFURN • BARUFFALDI •
- HURCO • PROEBA • BENZINGER
- THWACKERON • REPUBLIC LAGUN
- BOEHRINGER • HYUNDAI KIA
- TOMI • BIGLIA • IKEGAI •
- SMT TRICEPT • CINCINNATI •
- INDEX • STAR • CITIZEN • IRN
- PA • TRIGSAWA • CLAUSING
- JOHN FORD • TONGIL •
- DAEWOO • JONES & LAMSON •
- TORNOS • DOOSAN • KIA •
- TOSHIBA • DOOSAN INFRACORE
- KINGSBURY • TRAUB •
- EMKO • LEADWELL • TSUGAMI
- PICO MILLER • LODGE &
- SHIPLEY • VICTOR • ESCO •
- BINGSTON • MITRA • SOUTH
- LEND • WASING • EUROTECH
- MAZAK • WEILER • FAMAR
- MIGHTY SPINNER • FAMEI
- MILTRONICS • FORTUNE •
- MIYAN • GUNGS & LEWIS
- MC • ELDEME •
- ORAI •
- NEW
- BRITAIN • HARDINGE • DRUMA
- BARDONS & OLIVER • HITACHI
- SEIKI • HURCO • PROEBA
- BENZINGER • CLAUSING
- JOHN FORD • TONGIL •



**ITI TOOLING COMPANY INC.** is a unique and experienced supply company, offering an extensive range of top-quality "Driven" and "Static" tool holding solutions for most CNC Lathes from around the world.

We supply the world's finest CNC Lathe Tool Holders, manufactured by companies who have been recognized as industry leaders for decades. Our clients have gained confidence in the quality and "know-how" that comes from our many years experience addressing a broad spectrum of applications in all industries. Applications that utilize not only our standard Tool Holders but also "Multi-Head" and "Multi-Spindle" Units, along with other custom designs, which have economically solved problems for today's more demanding, multi-tasking and highly competitive manufacturing environments.

We offer precision, top quality toolholders and spindle units designed as Bolt-on, VDI and other styles of mounting systems that are available and manufactured to meet the highest standards of quality using only the finest materials available.



**ITI TOOLING COMPANY INC.**

37 Orchard St., Ramsey, N.J. 07446 1-888-88-INDEX



## What we are made of...

Our focus is on the highest quality standards and utmost commitment to ensure the optimal design of our products in form and function. For this purpose, we systematically invest in state-of-the-art production lines and develop methods for quality assurance in cooperation with external institutions.

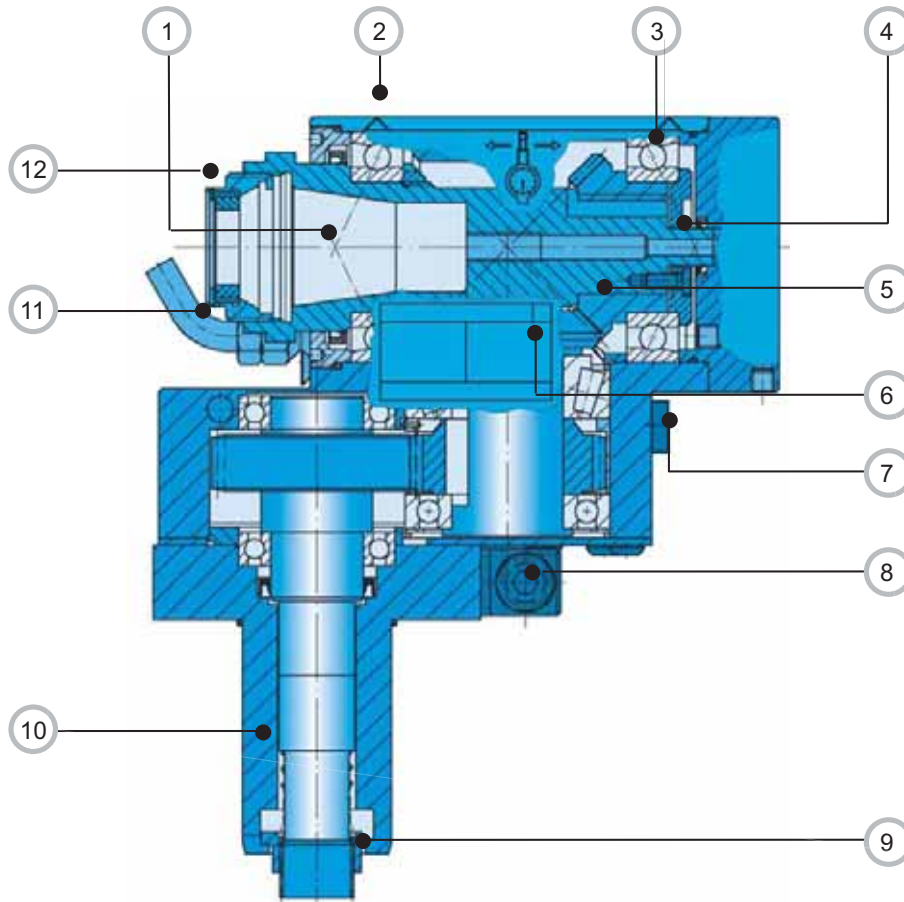
Competence and reliability in our advisory services, our daily communication and project management – these are the core elements convincing our customers of our performance and services over and over again.



www.ITITooling.com

*Even the finest "state of the art" cutting tools used on the best lathes are only as good as the **tool holders** that support them.*

## Twelve reasons to specify ITI Tooling Co.



- |  |   |
|--|---|
| <ul style="list-style-type: none"> <li>① Highest possible rotational accuracy.</li> <li>② Qualified datum surface for rapid alignment.</li> <li>③ Optimum pre-loaded bearing configurations for maximum stiffness ■</li> <li>④ Patented high-pressure internal coolant delivery system.</li> <li>⑤ High-precision gear train of optimum power and performance.</li> <li>⑥ Laser etched identification plate.</li> <li>⑦ Independent external coolant connection ■</li> <li>⑧ Unique “rapid-set” spindle alignment device to minimize tool change and set-up time.</li> </ul> | <ul style="list-style-type: none"> <li>⑨ Patented spindle orientation detent for rapid tool drive engagement</li> <li>⑩ Many units offered with a Universal mounting shank with double tooth rack for right-hand or left-hand operation</li> <li>⑪ External coolant supply – can be individually fitted</li> <li>⑫ Many units have a recessed collet clamping nit ensuring maximum stiffness and an optimum interference free zone</li> </ul> |
|--|---|

All spindle units undergo stringent monitoring during a running-in procedure testing, including thermal testing and prior to delivery, to ensure guaranteed performance immediately upon being placed into service.



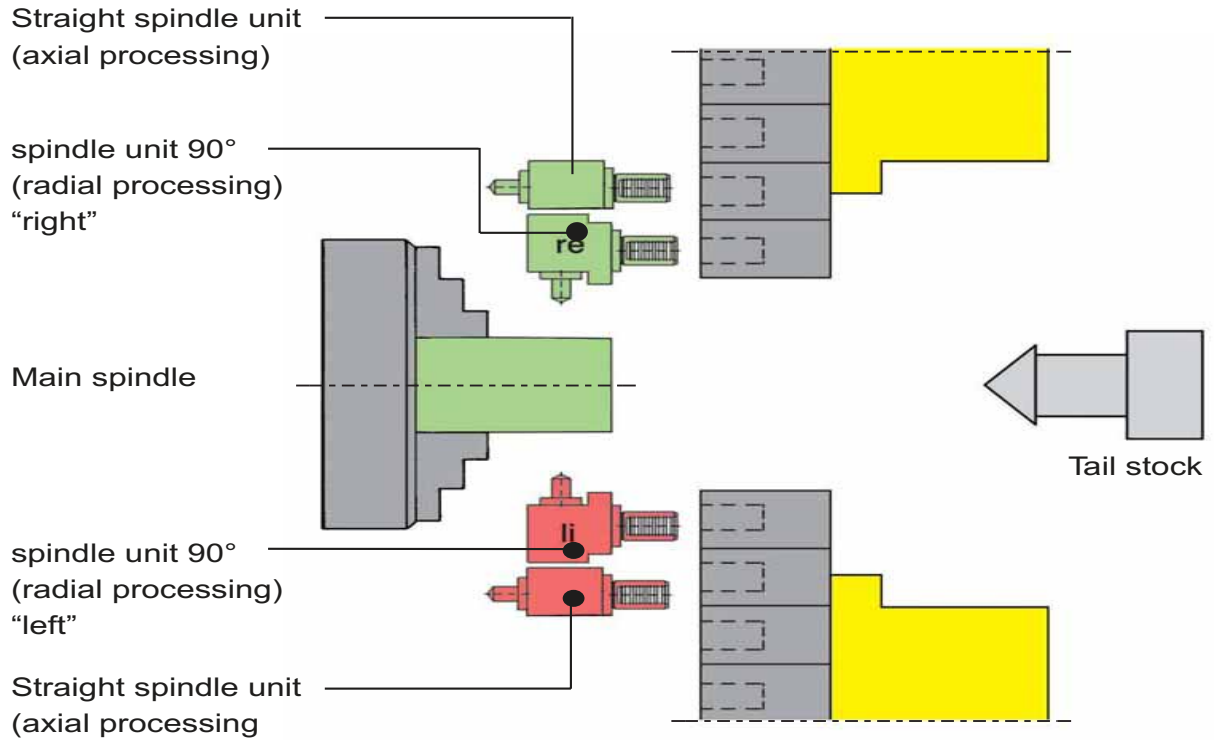
**ITI** TOOLING COMPANY

A Division of **INDEXING** TECHNOLOGIES INC.

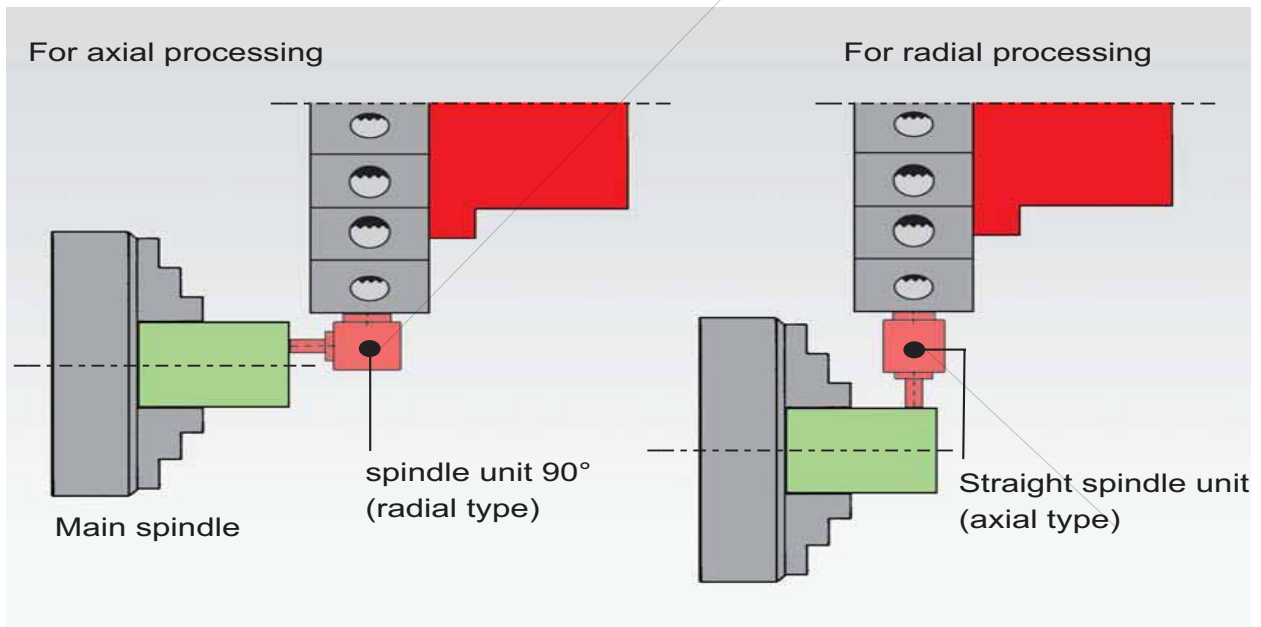
37 Orchard Street., Ramsey, NJ. 07446 - Phone (201) 934-6333 - Fax (201) 934-6333 [www.indexingtechnologies.com](http://www.indexingtechnologies.com)  
[www.ititooling.com](http://www.ititooling.com)

## 1. Axial mounting on disc turrets

### Orientation and designation of spindle units



## 2. Radial mounting on disc turrets

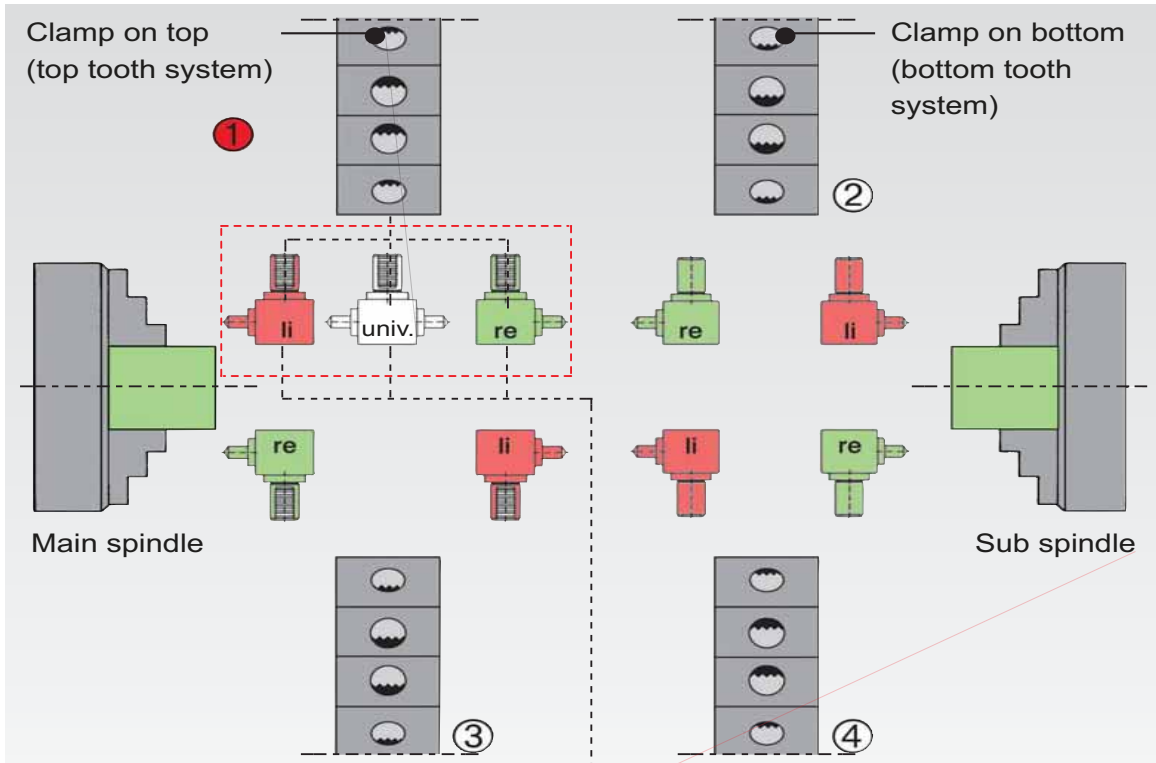


**ITI TOOLING COMPANY**

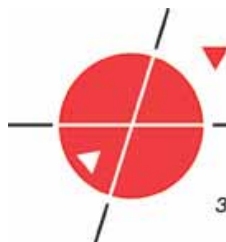
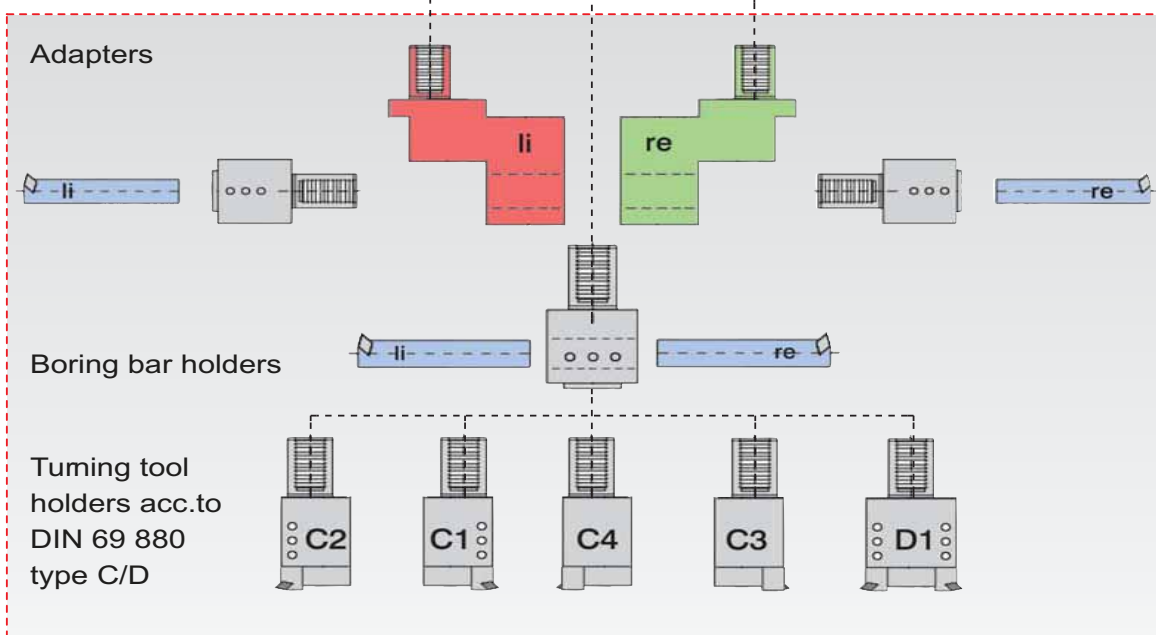
A Division of **INDEXING TECHNOLOGIES INC.**

37 Orchard Street., Ramsey, NJ. 07446 - Phone (201) 934-6333 - Fax (201) 934-6333 [www.indexingtechnologies.com](http://www.indexingtechnologies.com)  
[www.ititooling.com](http://www.ititooling.com)

### Right / left / universal designation for spindle units



### ① Tool holder designation



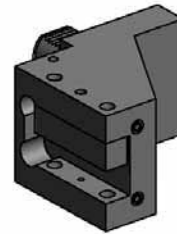
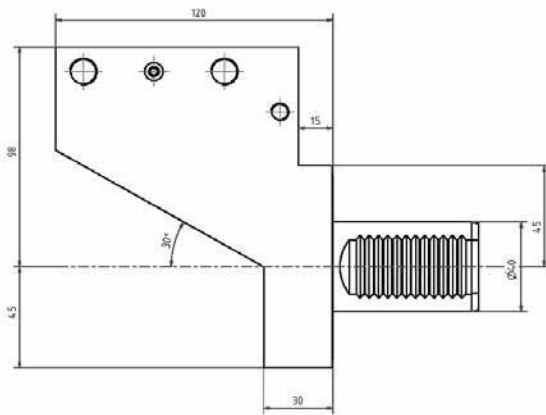
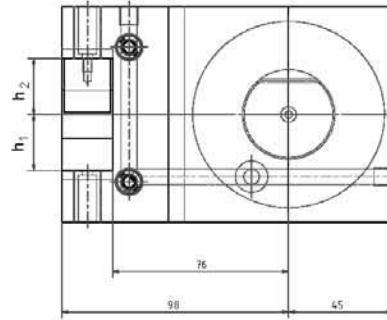
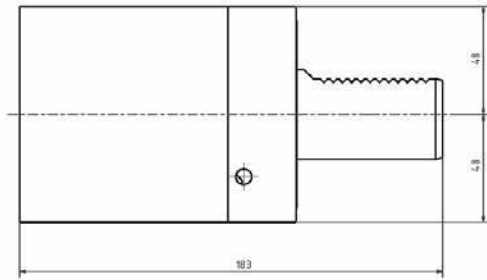
**ITI TOOLING COMPANY**

A Division of **INDEXING TECHNOLOGIES INC.**

37 Orchard Street., Ramsey, NJ. 07446 - Phone (201) 934-6333 - Fax (201) 934-6333 www.indexingtechnologies.com  
www.ititooling.com

Außendrehalter  
links

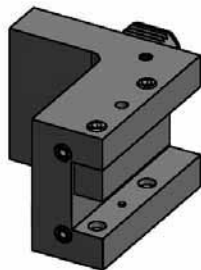
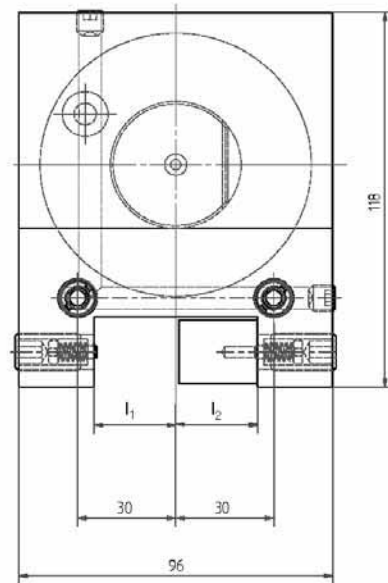
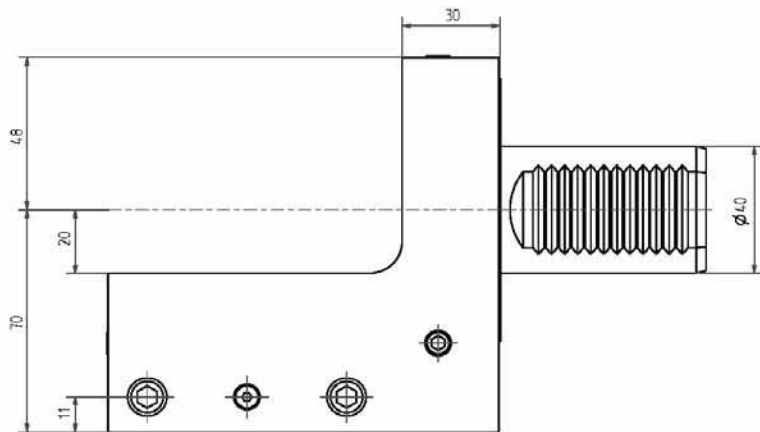
OD holder  
left hand



Nr./No.	h1	h2
4.4025ZT2500	25	25
4.4025,4ZT2500	25,4	25,4

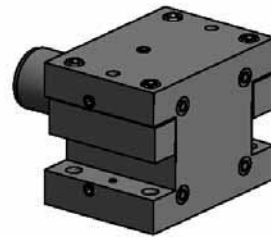
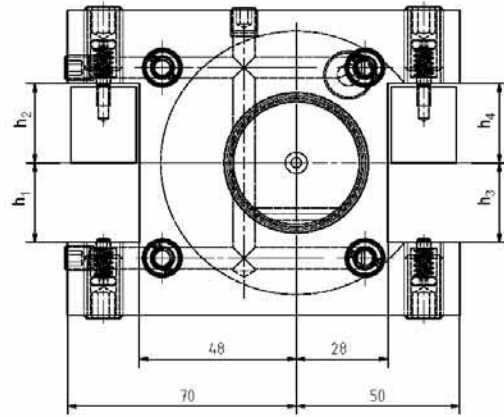
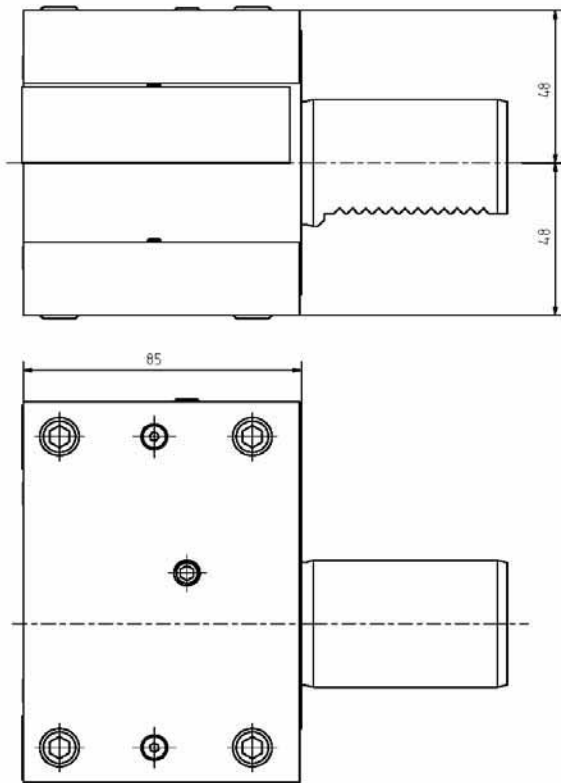
Außendrehalter  
rechts

OD holder  
righthand

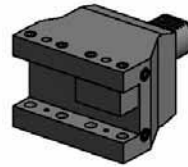
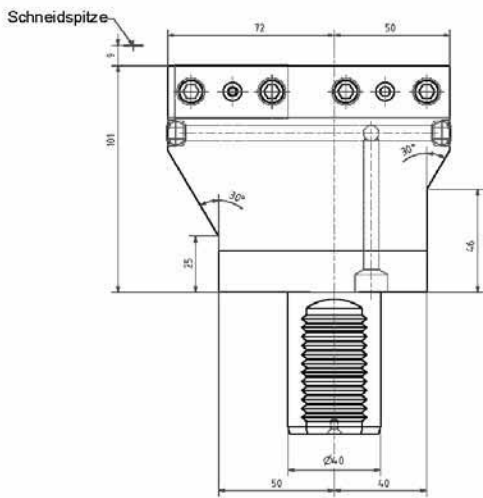
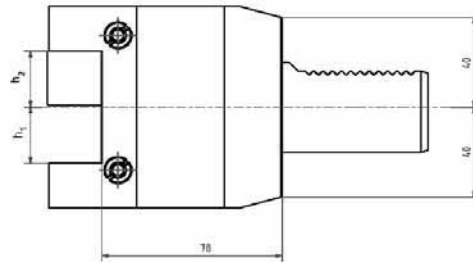
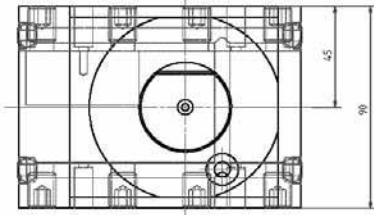


Nr./No.	l1	l2
1.4025ZT2500	25	25
1.4025,4ZT2500	25,4	25,4

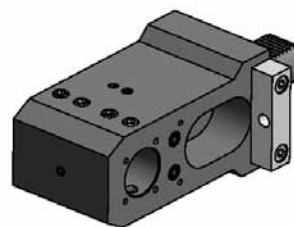
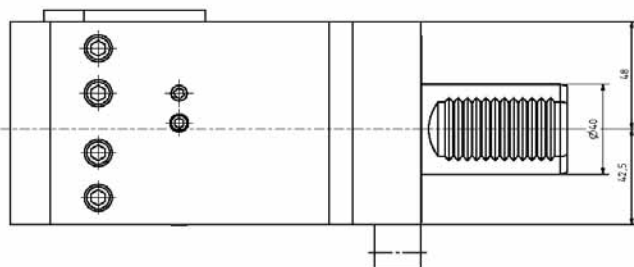
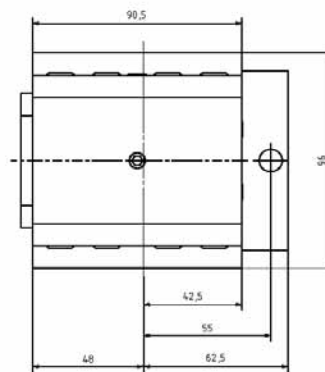
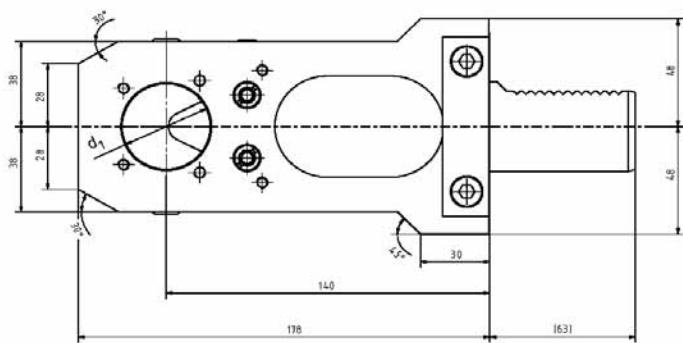




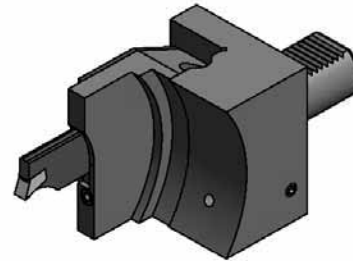
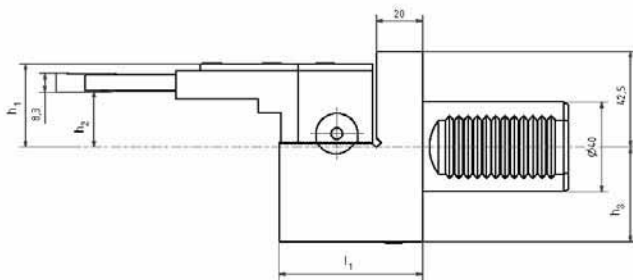
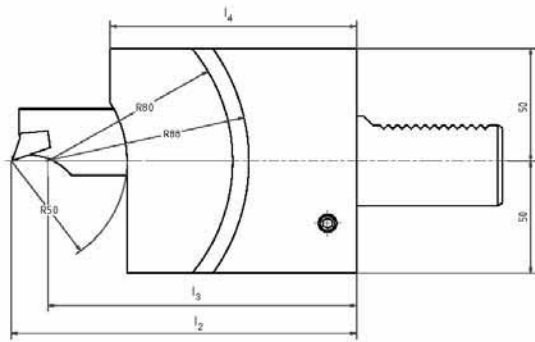
Nr./No.	h1	h2	h3	h4
15.4025ZT2500	25	25	25	25
15.4025AZT2500	25,4	25,4	25,4	25,4



Nr./No.	h1	h2
5.4025ZT2500	25	25
5.4025,4ZT2500	25,4	25,4



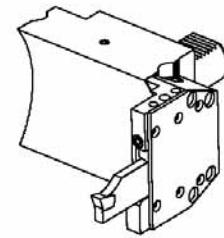
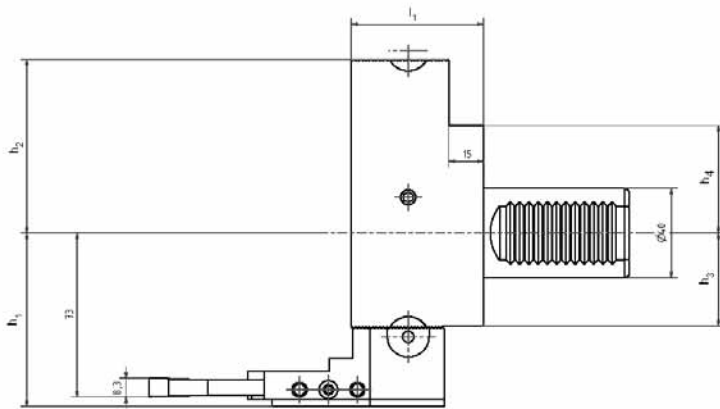
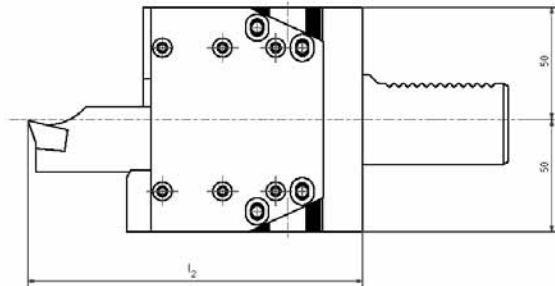
Nr./No.	d1
17.4032ZT2500	32
17.4038,1ZT2500	38,1



Nr./No.	l1	l2	B	l4	h1	h2	h3
32.4032ZT2500LÜKZ37	62,08	149	134	106,55	37	25	42,5
32.4032ZT2500LÜK	57,08	145	129	102	56,98	44,44	41,25
32.4032ZT2500LÜKZ112	57,08	144,72	129	102	112,23	99,68	41,25

Abstechhalter  
rechts

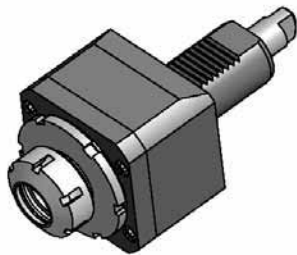
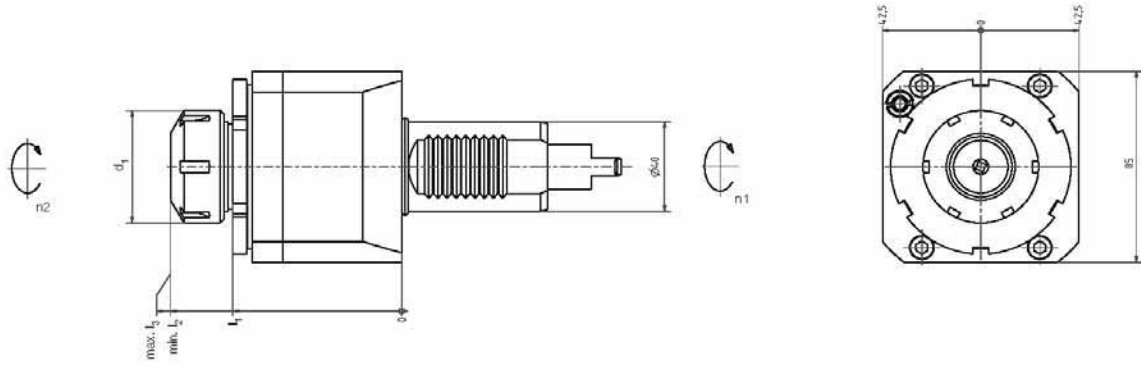
Infeed holder  
righthand



Nr./No.	l	l2	h1	h2	h3	h4
32.4032ZT2500R	57,09	144,72	77,25	77,25	41,25	48

Axial  
Bohr-und Fräskopf

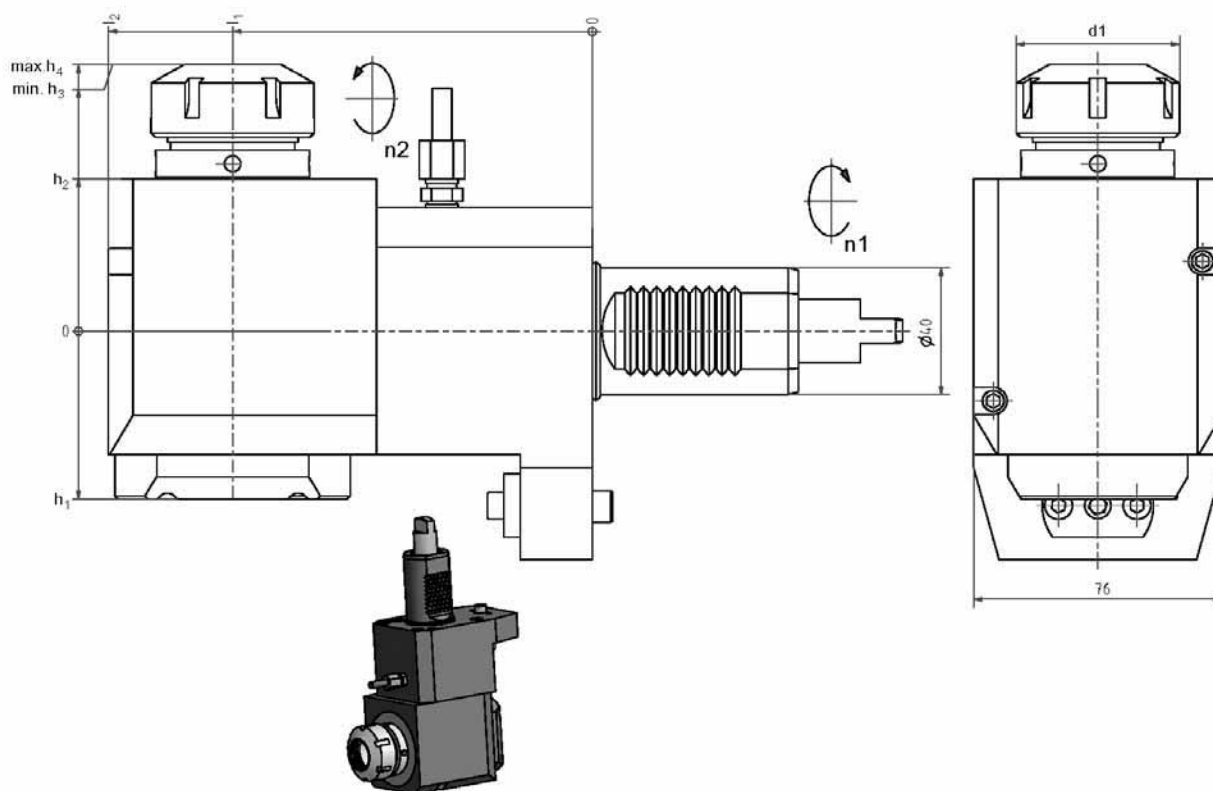
Axial  
drilling and milling head



Nr./No.	l1	l2	B	d1	n1	n2
40.4032ZT2500	73	97,5	101	50	5000 1/m in	5000 1/m in

Radial  
Bohr- und Fräskopf

Radial  
drilling and milling head



Nr./No.	l1	l2	h1	h2	h3	h4	d1
60.4032ZT2500L	110	148	53	48	81,5	85	50
60.4040ZT2500L	110	148	53	48	92,5	96	63
60.4040ZT2500LK	111	155	82	56	94,5	98	63

Linke Ausführung wie gezeichnet, rechts Spiegebildlich  
Left version as shown, righthand reversed

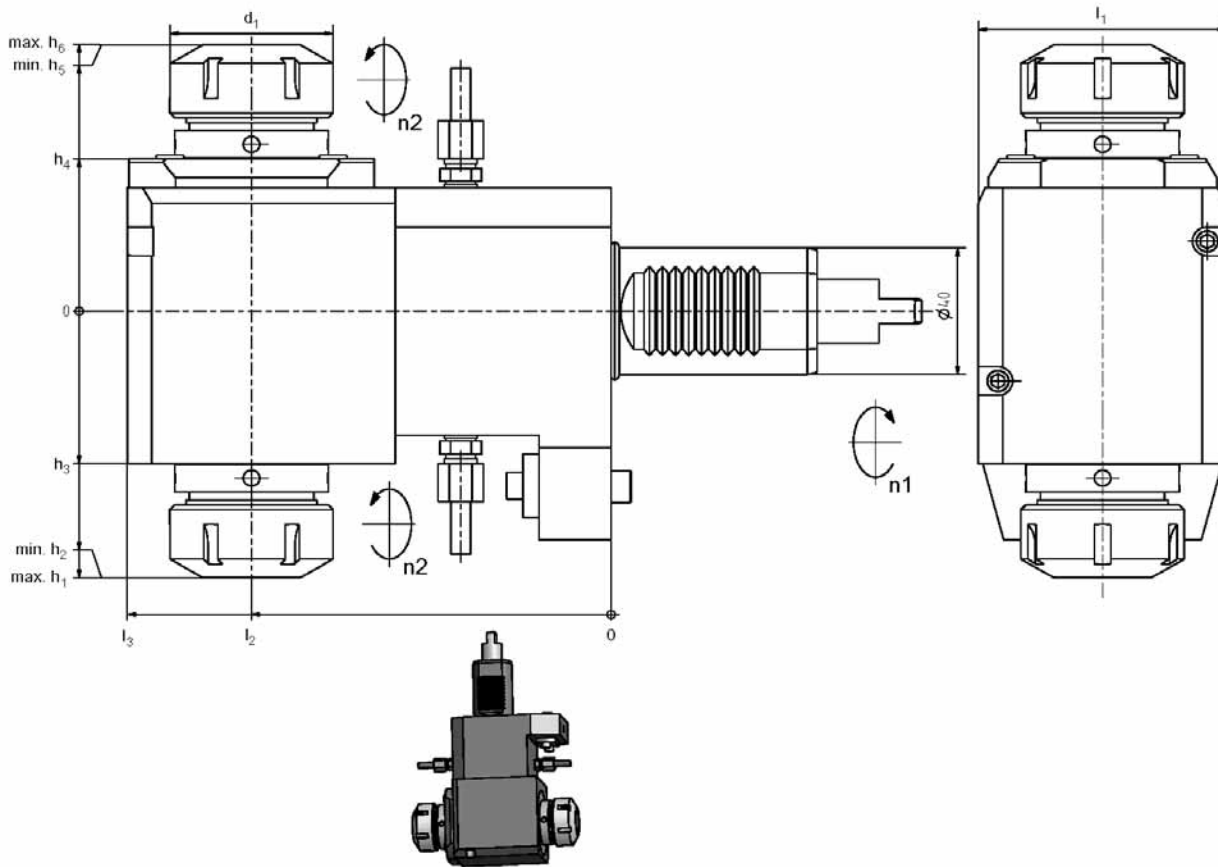
IK = Inteme Kühlung  
IK = InternalCooling

Radial

Bohr- und Fräskopf  
 doppelseitig

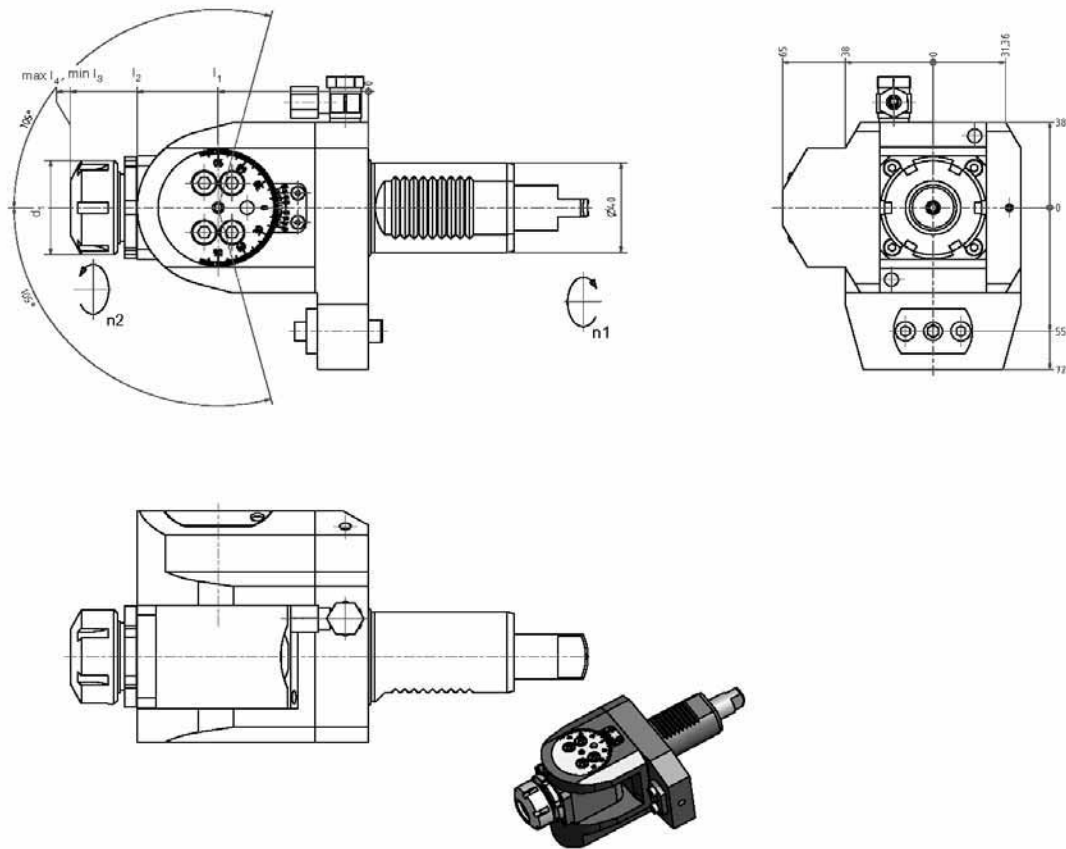
Radial

drilling and milling head



Nr./No.	l	∅	h1	h2	h3	h4	h5	h6	d1	n1	n2
60.4032DZT2500	110	148	85	81,5	48	48	81,5	85	50	6000 1/m in	6000 1/m in
60.4040DZT2500	110	160	107	103,5	75,5	77,5	105,5	109	63	6000 1/m in	6000 1/m in

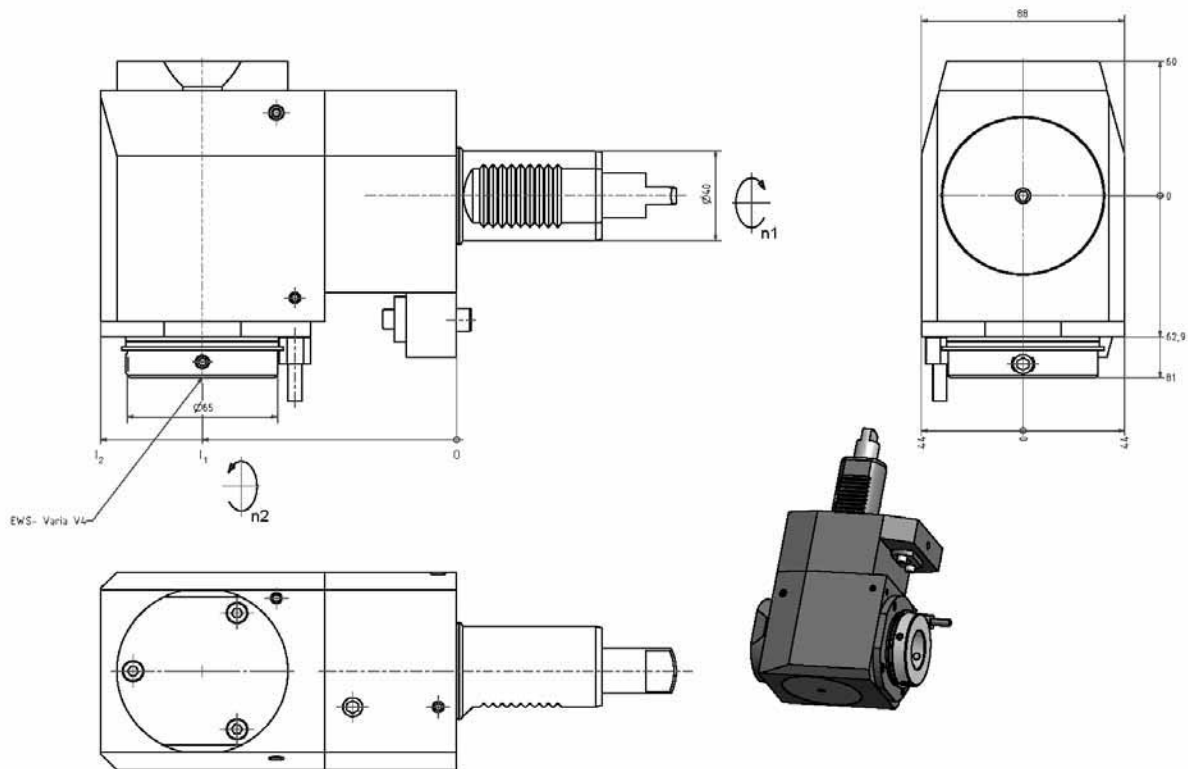




Nr./No.	l1	l2	B	l4	d1	n1	n2
63.4025ZT2500	65	100	127,5	131	42	6000 1/m h	6000 1/m h
63.4025LZT2500	100	135	162,5	166	42	6000 1/m h	6000 1/m h

Radial  
Bohr-und Fräskopf

Radial  
drilling and milling head



Nr./No.	l1	l2	h1	h2	h3	h4	d1	n1	n2
60.40V4ZT2500R	110	148	53	48	81,5	85	50	5000 1/m in	5000 1/m in

Rechte Ausführung wie gezeichnet, links Spiegelbildlich  
Right version as shown, left hand reversed

Radial

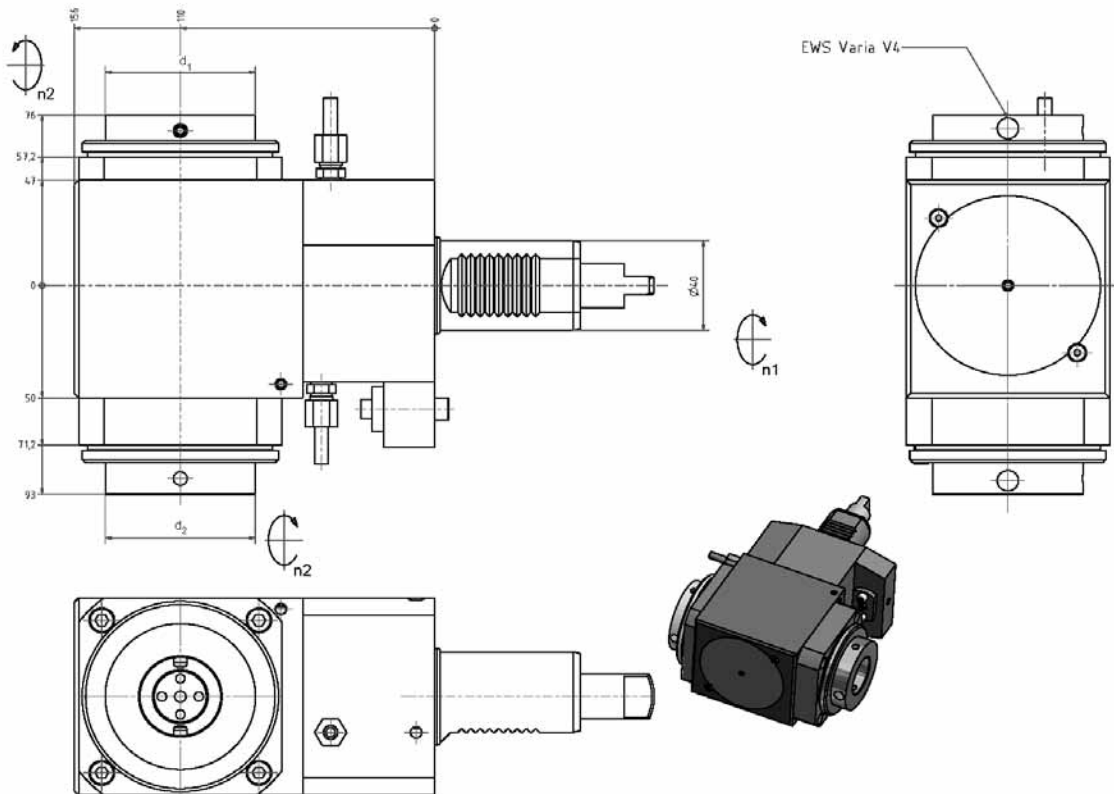
Bohr- und Fräskopf

doppelseitig

Radial

drilling and milling head

double side



Nr./No.	n1	n2
60.40V4DZT2500L	6000 1/m in	6000 1/m in

Linke Ausführung wie gezeichnet, rechts Spiegebildlich  
Left version as shown, righthand reversed

**ITI QC VARIA®** *Universal Modular Tool Holding System*



## **GIVE US YOUR CNC LATHE AND JUST 7 SECONDS TO PROVE A POINT ...**

Because with just one single-point clamp in the patented ITI QC-Varia tool holding system, all it takes is about 7 seconds to exchange tools on most CNC lathes.

A simple half turn to the left releases used tools, a half turn to the right secures new ones.

And on many lathes, when the tool spindle stops, a spring-loaded detent automatically orients the clamp screw towards the operator. There's no wasted time searching for the clamp and, more importantly, no need to grab sharp or broken tools to rotate the spindle manually.



There's more. Varia's compact design provides a greater working envelope than other modular systems. And with dedication to engineering excellence, you're assured years of trouble-free performance.



**ITI TOOLING COMPANY INC.**

*Your Single Source for High-Quality  
CNC Lathe Tool Holders and Spindle Units*

[www.ititooling.com](http://www.ititooling.com)

HARDINGE • OLIVER • HITACHI SEIKI  
 OMTURN • BARUFFALDI •  
 MURCO • PROBE • BENZINGER  
 INVACHRON • FERRILLI CLAGN  
 BOERRINGER • HYUNDAI KIA  
 TOMMI • BIEGA • REGAI •  
 SAI TRICEPT • CINCINNATI •  
 INDEX • STAB • CITIZEN • JINN  
 FA • TRUSAWA • CLAUSING  
 JOHNFORD • TONGIL •  
 DAEMOO • JONES & LAMSON •  
 TORNO5 • DOOSAN • KIA •  
 TOSHIBA • DOOSAN INFRACORE  
 KINGSIMRY • TRAMB •  
 ENDAG • LEADWELL • TSUGAMI  
 EMCO STAYER • LODGE &  
 SHIPLEY • VICTOR • ESCO •  
 KINGSTON • MATRA • SOUTH  
 BEND • WASHINO • EBROTECH  
 MAZAK • WEILER • FAMAR  
 MIGHTY SPINNER • FAMOT  
 MILITRONICS • FORTUNE •  
 MIYAN • GS &  
 DEMEL  
 ORATE  
 MO • BRA  
 NUSAMURA • HASS •  
 URTAIN • HARDINGE • ORIMA  
 HARDONS • OLIVER • HITACHI  
 SEIKI • MURCO • PROBE  
 BENZINGER • CLAUSING  
 JOHNFORD • TONGIL •



**ITI TOOLING COMPANY INC.**

*Your Single Source For Top Quality Tool Holders  
And Spindle Units For Most CNC Lathes.*

**1-888-88-INDEX**