



LB2000 - LB3000

GET THE MOST FROM YOUR TURNING CENTER



High Precision Tool Holders And Spindle Units For Most CNC Turning Machines

- BARDONS • OLIVER • HITACHI SEKI
- OMNITURN • BARUFFALDI
- HURCO • PROBER • BENZINGER
- ETWACHEON • REPUBLIC CLAYTON
- BOEHRINGER • HYUNDAI KIA
- ROMI • BIGLIA • IREGAI
- SMT TRICEPT • CINCINNATI
- INDEX • KAR • GIZZEN • JINN
- ER • TAKISAWA • CLAUSING
- JOHNFORD • TONGIL
- DAEWOO • JONES & LAMSON
- FORMAS • DOOSAN • KIA
- TOSHIBA • OGDAN INFRACORE
- KINGSBURY • TRAUB
- SWAG • LEADWELL • TSUGAMI
- EMCO MATEL • LODGE &
- SHIPLEY • VICTOR • ESCO
- KINGSTON • MATRA • SOUTH
- LEND • WASINO • EUROTECH
- MAZAK • WEILER • FAMAR
- EMIGHTY SPINNER • FAMOT
- MINI TRONICS • FORTUNE
- MIYANO • GUNGS & LEWIS
- MIDWESTERN • ORA
- NEW
- BRITAIN • HARDINGE • OKUMA
- BARDONS & OLIVER • HITACHI
- SEKI • HURCO • PROBER
- BENZINGER • CLAUSING
- JOHNFORD • TONGIL



**ITI TOOLING COMPANY INC.** is a unique and experienced supply company, offering an extensive range of top-quality "Driven" and "Static" tool holding solutions for most CNC Lathes from around the world.

We supply the world's finest CNC Lathe Tool Holders, manufactured by companies who have been recognized as industry leaders for decades. Our clients have gained confidence in the quality and "know-how" that comes from our many years experience addressing a broad spectrum of applications in all industries. Applications that utilize not only our standard Tool Holders but also "Multi-Head" and "Multi-Spindle" Units, along with other custom designs, which have economically solved problems for today's more demanding, multi-tasking and highly competitive manufacturing environments.

We offer precision, top quality toolholders and spindle units designed as Bolt-on, VDI and other styles of mounting systems that are available and manufactured to meet the highest standards of quality using only the finest materials available.



**ITI TOOLING COMPANY INC.**

37 Orchard St., Ramsey, N.J. 07446 1-888-88-INDEX



## What we are made of...

Our focus is on the highest quality standards and utmost commitment to ensure the optimal design of our products in form and function. For this purpose, we systematically invest in state-of-the-art production lines and develop methods for quality assurance in cooperation with external institutions.

Competence and reliability in our advisory services, our daily communication and project management – these are the core elements convincing our customers of our performance and services over and over again.

www.ITITooling.com

*Even the finest "state of the art" cutting tools used on the best lathes  
are only as good as the **tool holders** that support them.*

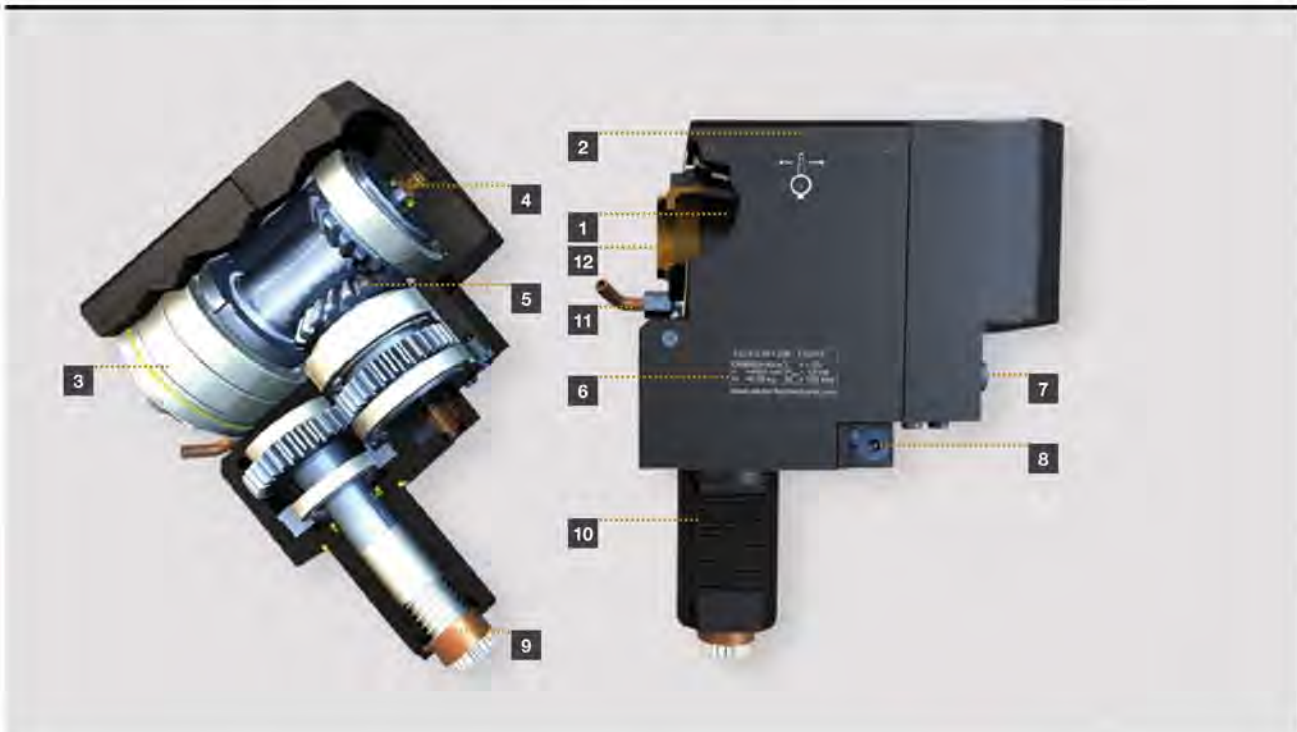


**ITI** TOOLING COMPANY

A Division of **INDEXING** TECHNOLOGIES INC.

37 Orchard Street., Ramsey, NJ. 07446 - Phone (201) 934-6333 - Fax (201) 934-6333 [www.indexingtechnologies.com](http://www.indexingtechnologies.com)  
[www.ititooling.com](http://www.ititooling.com)

## Good reasons to specify ITI Tooling Co.



1. Highest possible rotational accuracy
2. Qualified datum surface for rapid alignment
3. Optimum pre-loaded bearing configurations for maximum rigidity
4. Sauter patented high-pressure internal coolant delivery system that can also be used dry
5. High-precision gear train of optimum power and performance
6. Laser etched identification plate with all relevant information
7. Independent external coolant connection
8. Patented "rapid-set" spindle alignment device to minimize tool change and set-up time
9. Patented spindle orientation detent for rapid tool drive engagement – DIN5480
10. Universal mounting shank with double tooth rack for right-hand or left-hand operation
11. External coolant supply – can be individually fitted
12. Recessed collet clamping nut ensures maximum rigidity and an optimum interference free zone

All spindle units undergo stringent testing, including thermal testing and monitoring during a running-in procedure prior to delivery, to ensure guaranteed performance immediately upon being placed into service.



**ITI** TOOLING COMPANY

A Division of **INDEXING** TECHNOLOGIES INC.

37 Orchard Street., Ramsey, NJ. 07446 - Phone (201) 934-6333 - Fax (201) 934-6333 [www.indexingtechnologies.com](http://www.indexingtechnologies.com)  
[www.ititooling.com](http://www.ititooling.com)

**Tooling for axial mount**

right/left designation for spindle units

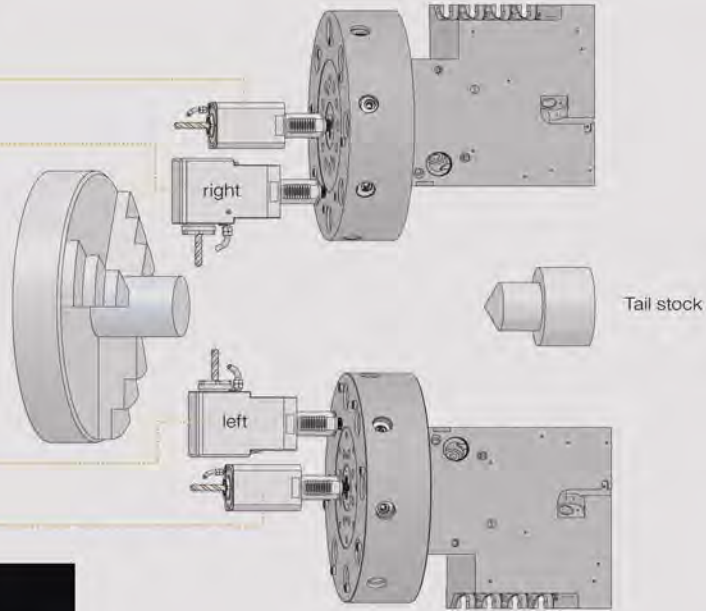
Straight spindle unit  
(axial processing)

Spindle unit 90°  
(radial processing)  
-right-

Main Spindle

Spindle unit 90°  
(radial processing)  
-left-

Straight spindle unit  
(axial processing)



**Tool designation**

**Tooling for radial mount**

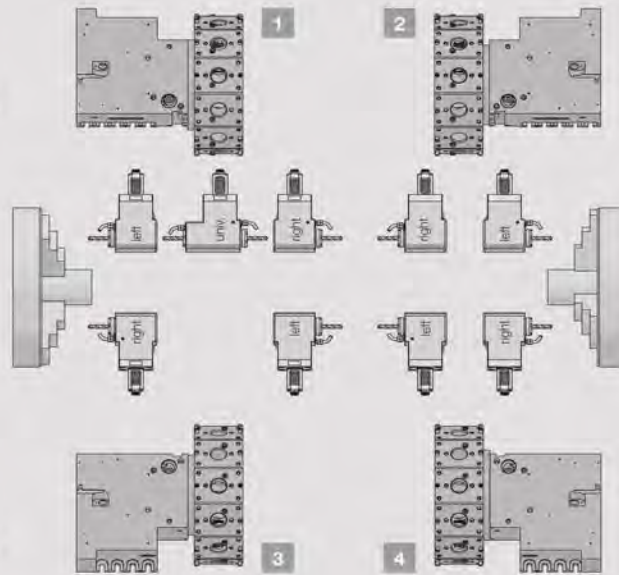
right/left/universal designation for spindle units

Clamp on top  
(top tooth system)

Main spindle

Sub spindle

Clamp on bottom  
(bottom tooth system)



04



**ITI TOOLING COMPANY**

A Division of **INDEXING TECHNOLOGIES INC.**

37 Orchard Street., Ramsey, NJ. 07446 - Phone (201) 934-6333 - Fax (201) 934-6333 [www.indexingtechnologies.com](http://www.indexingtechnologies.com)  
[www.ititooling.com](http://www.ititooling.com)

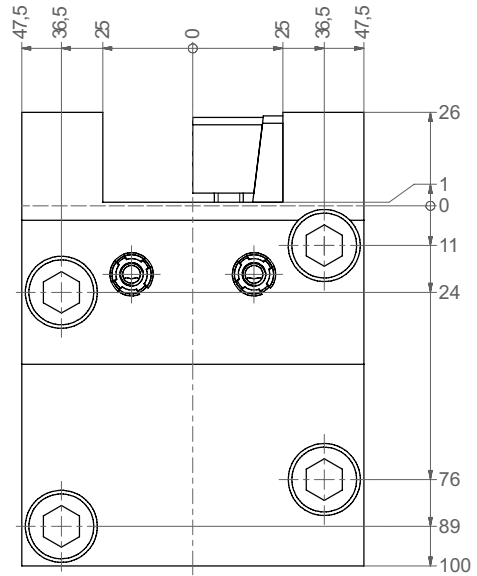
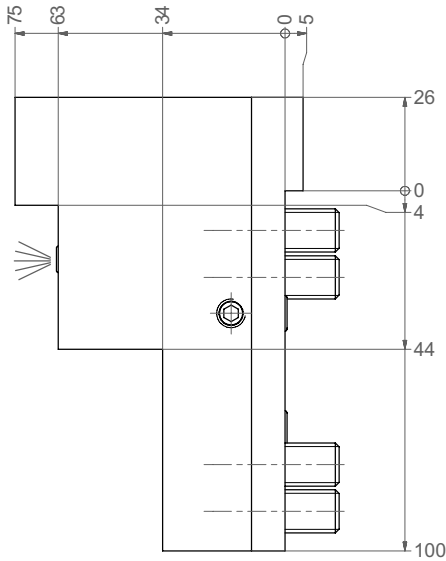


**ITI** TOOLING COMPANY

A Division of **INDEXING** TECHNOLOGIES INC.

37 Orchard Street., Ramsey, NJ. 07446 - Phone (201) 934-6333 - Fax (201) 934-6333 [www.indexingtechnologies.com](http://www.indexingtechnologies.com)  
[www.ititooling.com](http://www.ititooling.com)

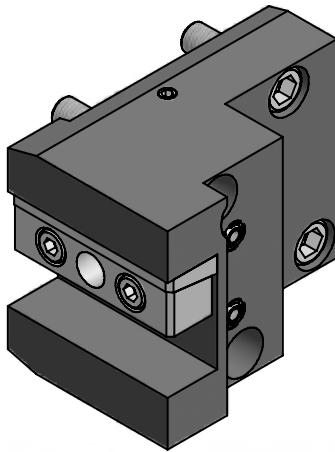
## ITI - OD Turning Tool Holder



**Part No.**  
**# 4.BMT25LB2000**

Subject to technical modifications

Coolant	For Square Tool	X
Ext.	25mm	X=(75mm)

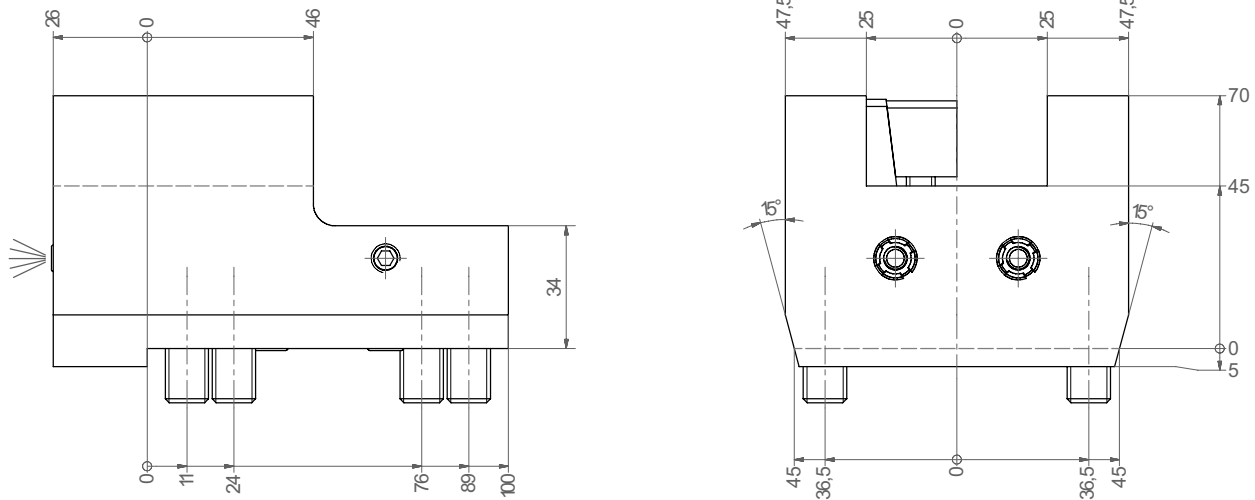


**ITI TOOLING COMPANY**

A Division of **INDEXING TECHNOLOGIES INC.**

37 Orchard Street., Ramsey, NJ. 07446 - Phone (201) 934-6333 - Fax (201) 934-6333 [www.indexingtechnologies.com](http://www.indexingtechnologies.com)  
[www.ititooling.com](http://www.ititooling.com)

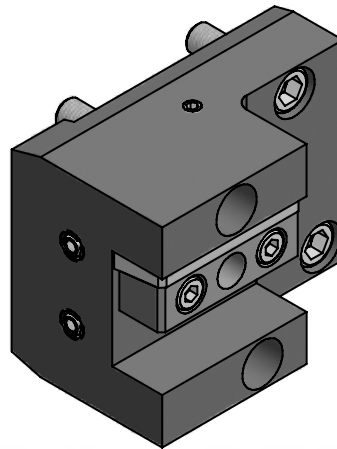
## ITI - Face Turning Tool Holder



**Part No.**  
**# 5.BMT25LB2000**

Subject to technical modifications

Coolant	For Square Tool	X
Ext.	25mm	X=(26mm)



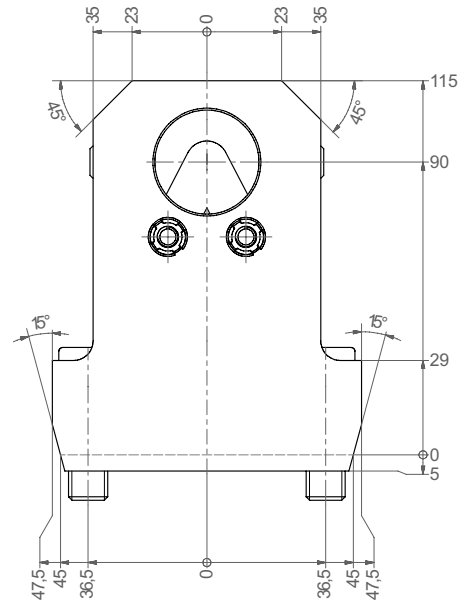
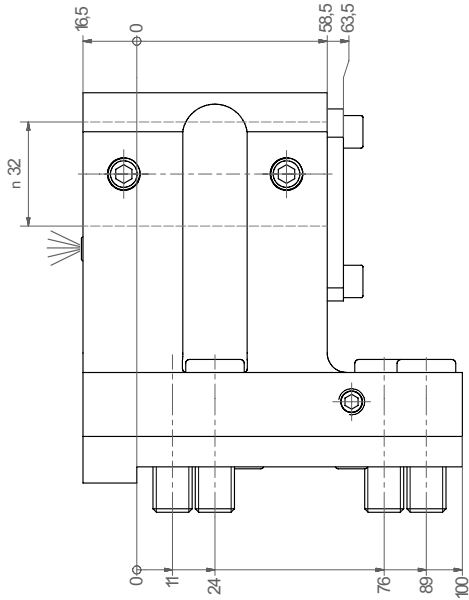
**ITI TOOLING COMPANY**

A Division of **INDEXING TECHNOLOGIES INC.**

37 Orchard Street., Ramsey, NJ. 07446 - Phone (201) 934-6333 - Fax (201) 934-6333 [www.indexingtechnologies.com](http://www.indexingtechnologies.com)  
[www.ititooling.com](http://www.ititooling.com)



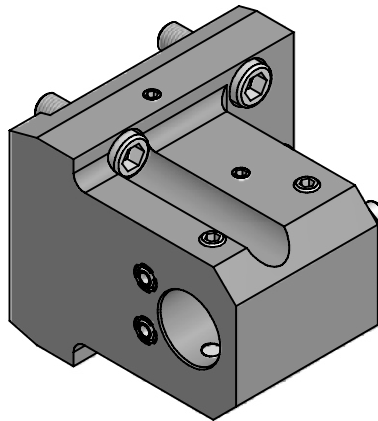
## ITI - ID Turning Tool Holder



**Part No.**  
**# 17.BMT32LB2000**

Subject to technical modifications

Coolant	For Round Tool	X
Ext.	32mm	X=(90mm)

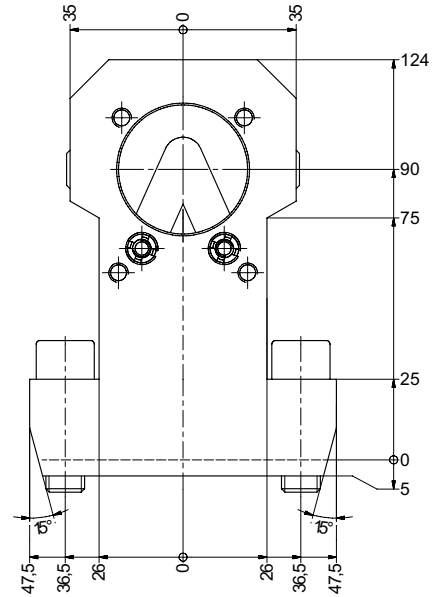
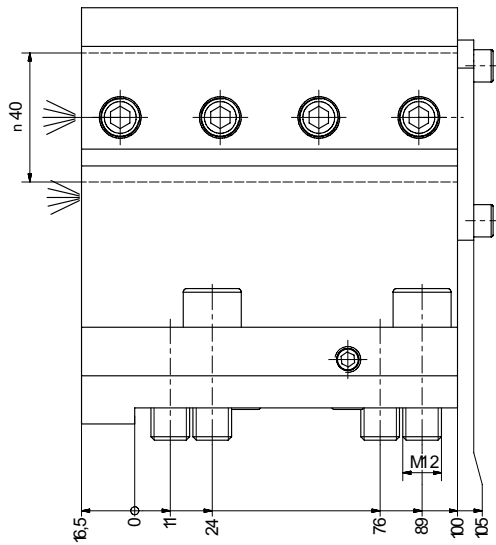


**ITI TOOLING COMPANY**

A Division of **INDEXING TECHNOLOGIES INC.**

37 Orchard Street., Ramsey, NJ. 07446 - Phone (201) 934-6333 - Fax (201) 934-6333 [www.indexingtechnologies.com](http://www.indexingtechnologies.com)  
[www.ititooling.com](http://www.ititooling.com)

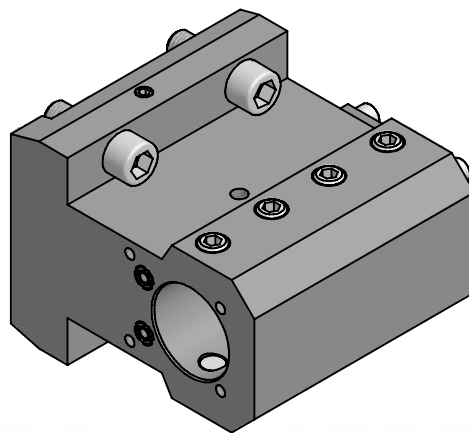
## ITI - Combi Holder for Int. / Ext. Cooling



**Part No.**  
**# 17.BMT40LB2000**

Subject to technical modifications

Coolant	For Round Tool	X
Int. / Ext.	40mm	X=(90mm)

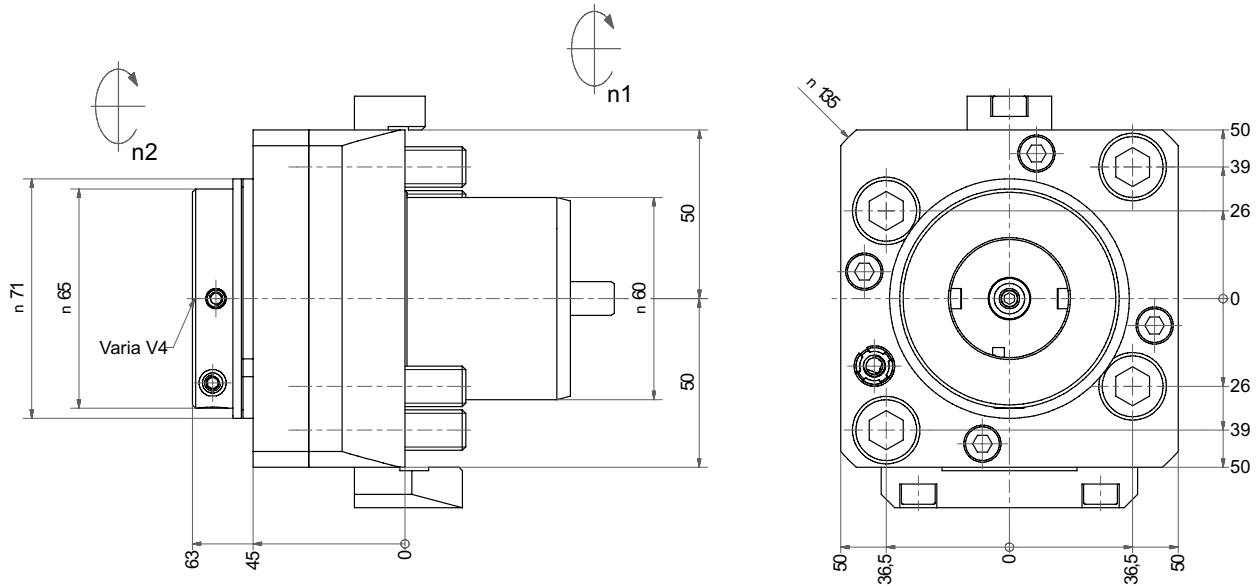


**ITI TOOLING COMPANY**

A Division of **INDEXING TECHNOLOGIES INC.**

37 Orchard Street., Ramsey, NJ. 07446 - Phone (201) 934-6333 - Fax (201) 934-6333 www.indexingtechnologies.com  
www.ititooling.com

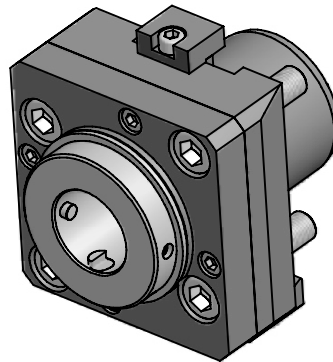
## ITI - Axial (straight) Drilling and Milling Head



**Part No.**  
**# 40.60V4LB2000BMT**

Subject to technical modifications

Coolant	i	M1	M2	n1	n2	Tooling System	X
Ext.	1:1	50 Nm	50 Nm	6000 1/min	6000 1/min	Varia V4	X=(63mm)

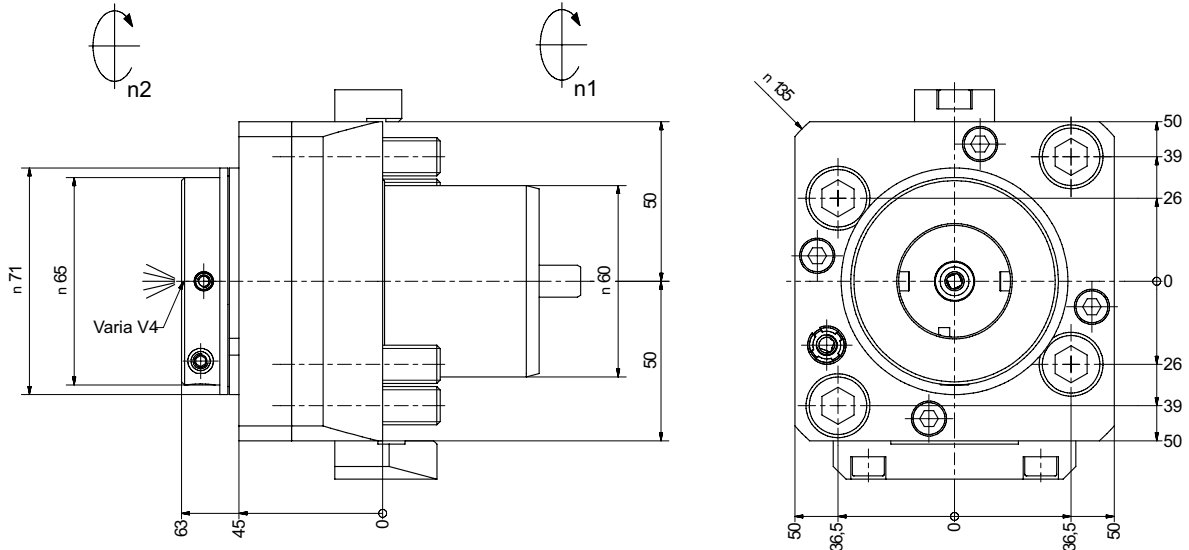


**ITI TOOLING COMPANY**

A Division of **INDEXING TECHNOLOGIES INC.**

37 Orchard Street., Ramsey, NJ. 07446 - Phone (201) 934-6333 - Fax (201) 934-6333 www.indexingtechnologies.com  
 www.ititooling.com

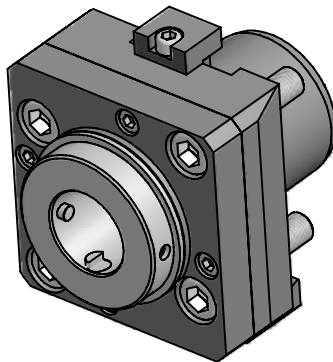
## ITI - Axial (straight) Drilling and Milling Head



**Part No.**  
**# 40.60V4LB2000BMTIK**

Subject to technical modifications

Coolant	i	M1	M2	n1	n2	Tooling System	X
Int. / Ext.	1:1	50 Nm	50 Nm	6000 1/min	6000 1/min	Varia V4	X=(63mm)

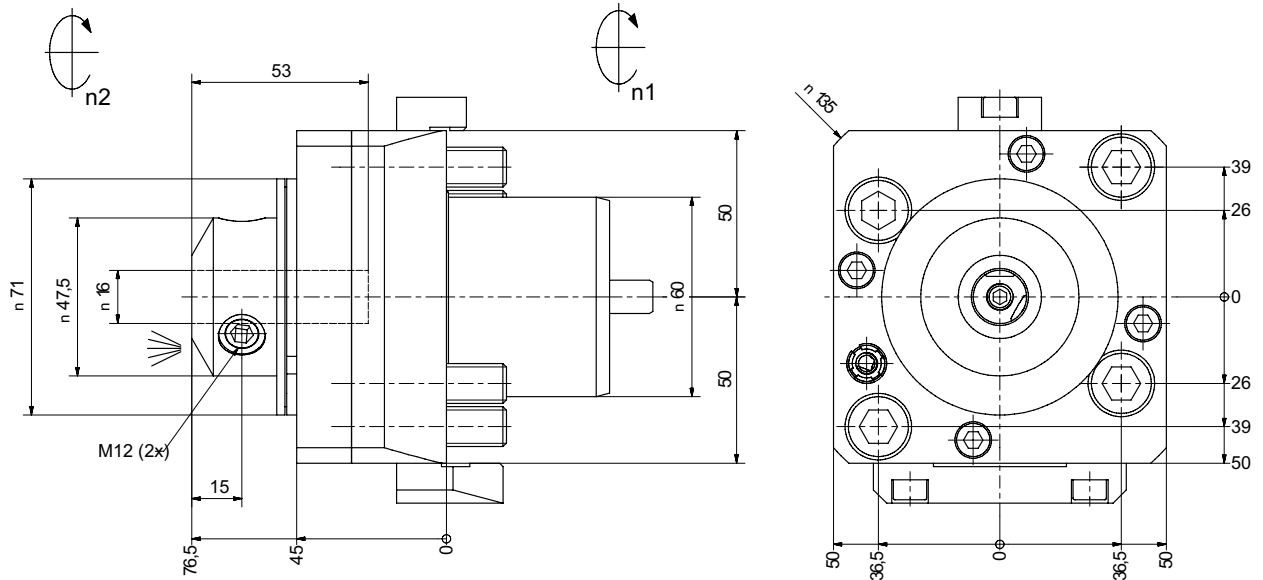


**ITI TOOLING COMPANY**

A Division of **INDEXING TECHNOLOGIES INC.**

37 Orchard Street., Ramsey, NJ. 07446 - Phone (201) 934-6333 - Fax (201) 934-6333 [www.indexingtechnologies.com](http://www.indexingtechnologies.com)  
[www.ititooling.com](http://www.ititooling.com)

## ITI - Axial (straight) Drilling and Milling Head

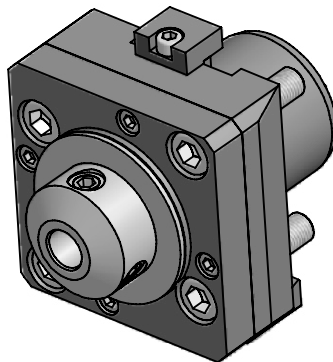


**Part No.**  
**# 40.6016WnkRLB2000BMT**

**With Taper Roller Bearings**

Subject to technical modifications

Coolant	i	M1	M2	n1	n2	Tooling System	X
Ext.	1:1	50 Nm	50 Nm	4000 1/min	4000 1/min	Whistle Notch	X=(76.5mm)

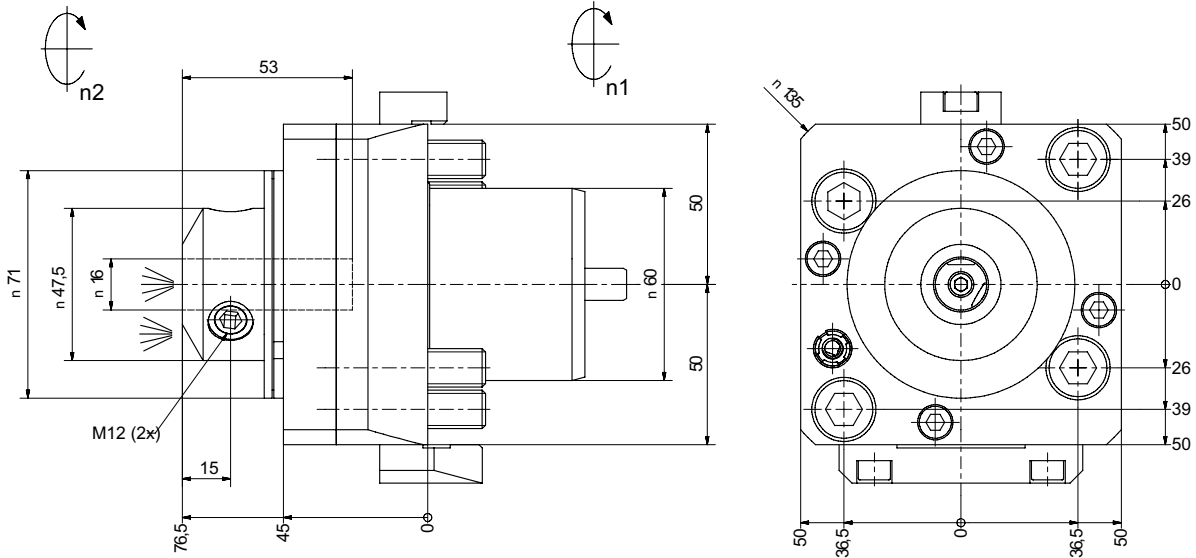


**ITI TOOLING COMPANY**

A Division of **INDEXING TECHNOLOGIES INC.**

37 Orchard Street., Ramsey, NJ. 07446 - Phone (201) 934-6333 - Fax (201) 934-6333 www.indexingtechnologies.com  
 www.ititooling.com

## ITI - Axial (straight) Drilling and Milling Head

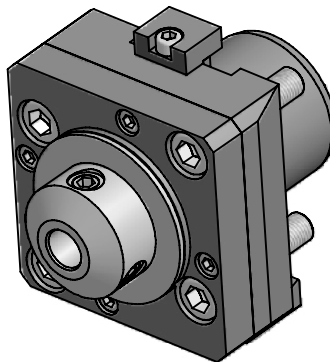


**Part No.**  
**# 40.6016WKNRLB2000BMTIK**

**With Taper Roller Bearings**

Subject to technical modifications

Coolant	i	M1	M2	n1	n2	Tooling System	X
Int. / Ext.	1:1	50 Nm	50 Nm	4000 1/min	4000 1/min	Whistle Notch	X=(76.5mm)

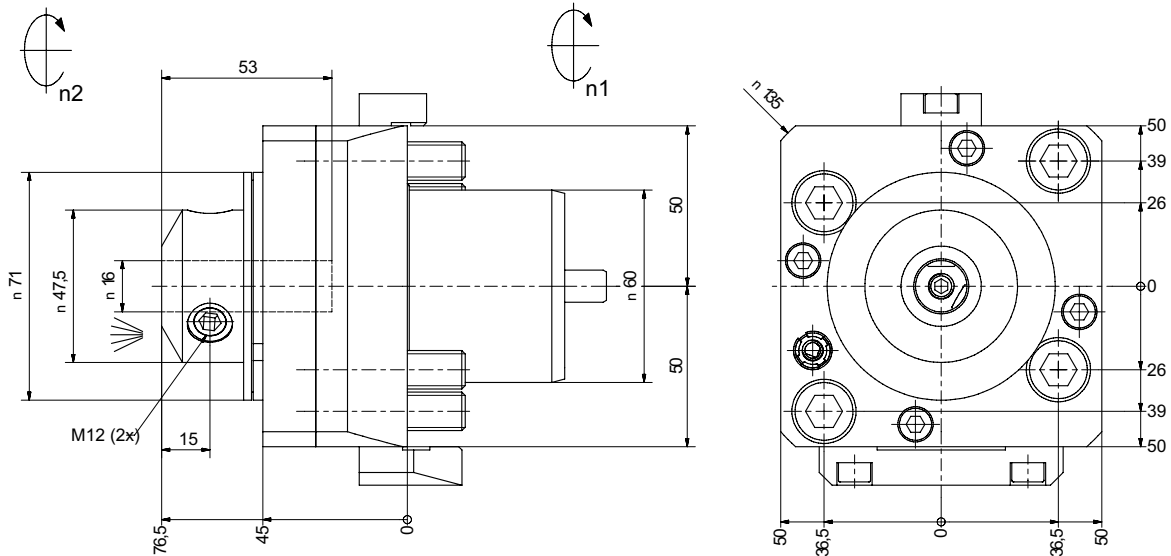


**ITI TOOLING COMPANY**

A Division of **INDEXING TECHNOLOGIES INC.**

37 Orchard Street., Ramsey, NJ. 07446 - Phone (201) 934-6333 - Fax (201) 934-6333 www.indexingtechnologies.com  
 www.ititooling.com

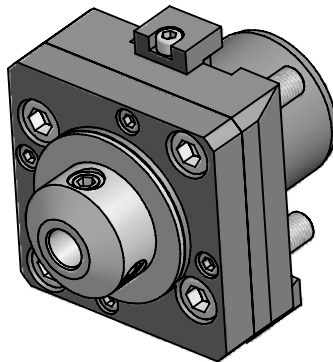
## ITI - Axial (straight) Drilling and Milling Head



**Part No.**  
# 40.6016WNLB2000BMT

Subject to technical modifications

Coolant	i	M1	M2	n1	n2	Tooling System	X
Ext.	1:1	50 Nm	50 Nm	6000 1/min	6000 1/min	Whistle Notch	X=(76.5mm)

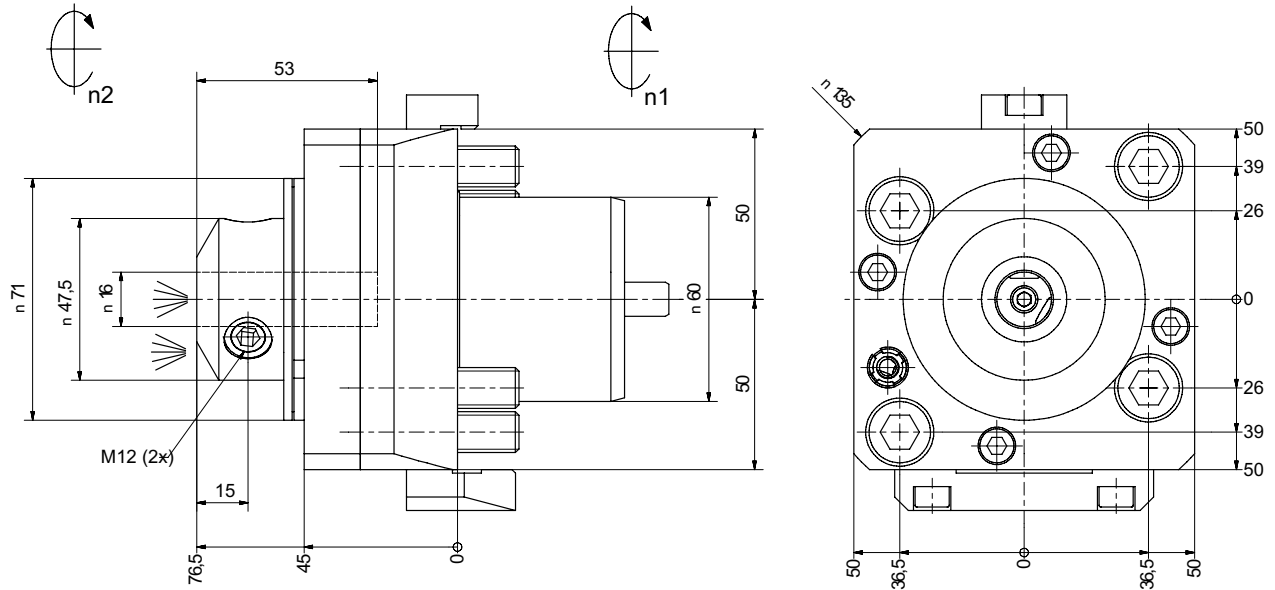


**ITI TOOLING COMPANY**

A Division of **INDEXING TECHNOLOGIES INC.**

37 Orchard Street., Ramsey, NJ. 07446 - Phone (201) 934-6333 - Fax (201) 934-6333 [www.indexingtechnologies.com](http://www.indexingtechnologies.com)  
[www.ititooling.com](http://www.ititooling.com)

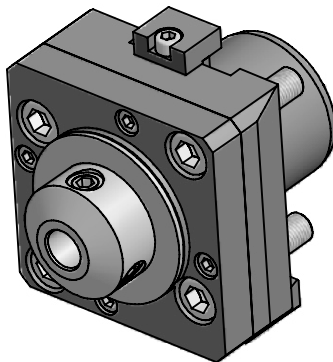
## ITI - Axial (straight) Drilling and Milling Head



**Part No.**  
**# 40.6016WNLB2000BMTIK**

Subject to technical modifications

Coolant	i	M1	M2	n1	n2	Tooling System	X
Int. / Ext.	1:1	50 Nm	50 Nm	6000 1/min	6000 1/min	Whistle Notch	X=(76.5mm)



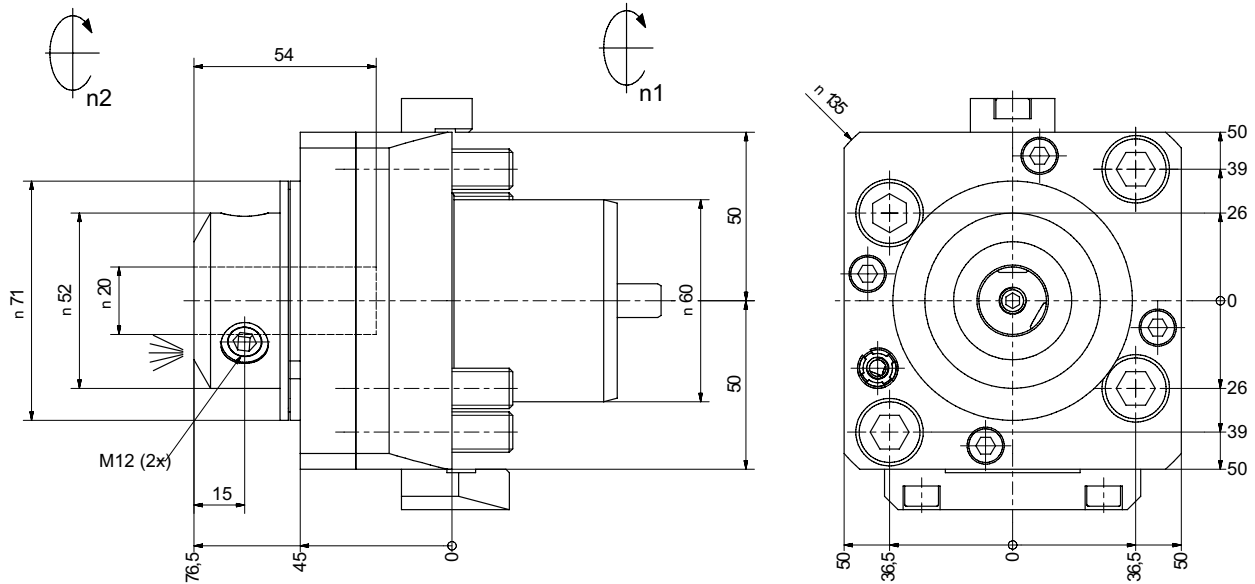
**ITI TOOLING COMPANY**

A Division of **INDEXING TECHNOLOGIES INC.**

37 Orchard Street., Ramsey, NJ. 07446 - Phone (201) 934-6333 - Fax (201) 934-6333 www.indexingtechnologies.com  
 www.ititooling.com



## ITI - Axial (straight) Drilling and Milling Head

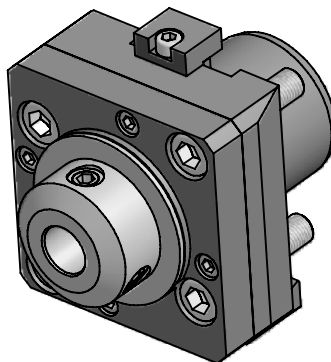


**Part No.**  
**# 40.6020WNKRLB2000BMT**

**With Taper Roller Bearings**

Subject to technical modifications

Coolant	i	M1	M2	n1	n2	Tooling System	X
Ext.	1:1	50 Nm	50 Nm	4000 1/min	4000 1/min	Whistle Notch	X=(76.5mm)

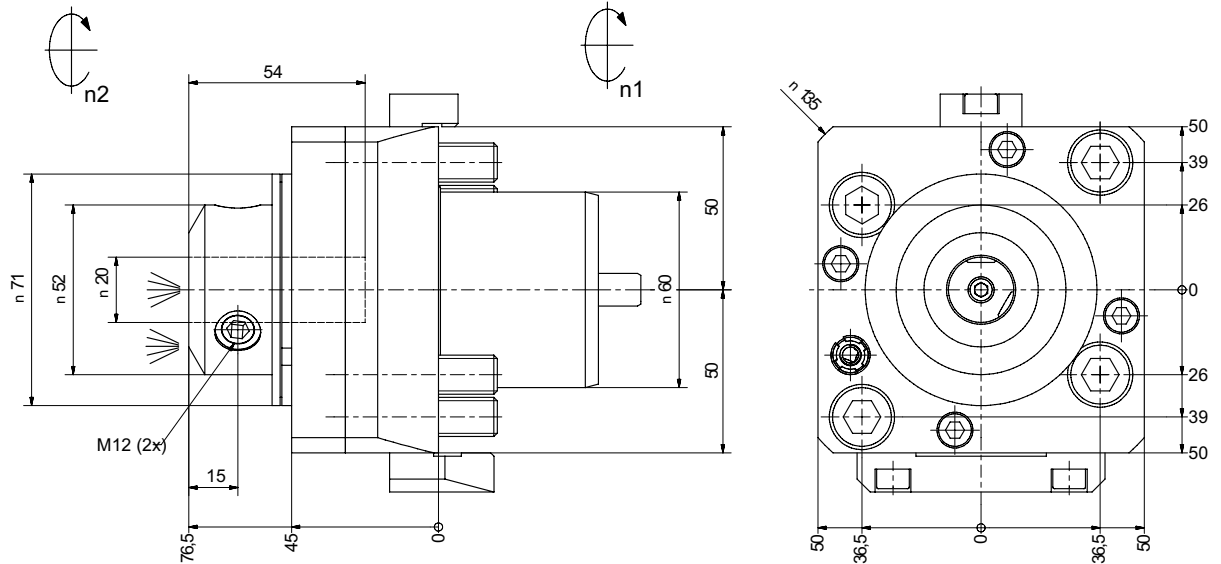


**ITI TOOLING COMPANY**

A Division of **INDEXING TECHNOLOGIES INC.**

37 Orchard Street., Ramsey, NJ. 07446 - Phone (201) 934-6333 - Fax (201) 934-6333 www.indexingtechnologies.com  
 www.ititooling.com

## ITI - Axial (straight) Drilling and Milling Head

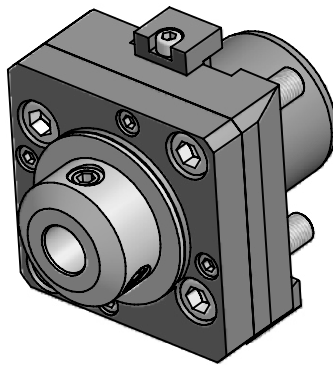


**Part No.**  
**# 40.6020WNKRLB2000BMTIK**

**With Taper Roller Bearings**

Subject to technical modifications

Coolant	i	M1	M2	n1	n2	Tooling System	X
Int. / Ext.	1:1	50 Nm	50 Nm	4000 1/min	4000 1/min	Whistle Notch	X=(76.5mm)

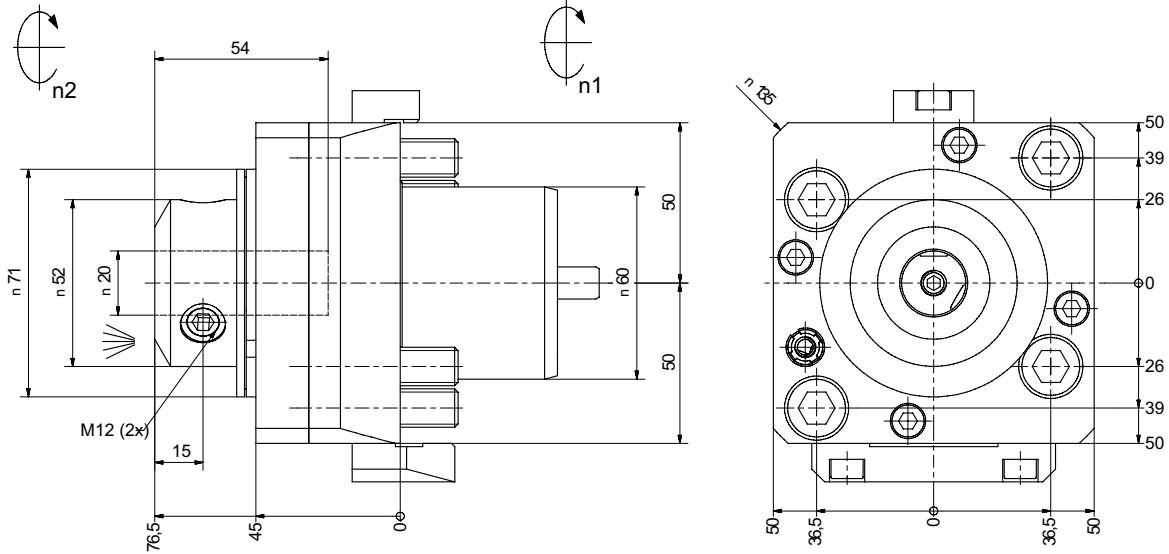


**ITI TOOLING COMPANY**

A Division of **INDEXING TECHNOLOGIES INC.**

37 Orchard Street., Ramsey, NJ. 07446 - Phone (201) 934-6333 - Fax (201) 934-6333 www.indexingtechnologies.com  
 www.ititooling.com

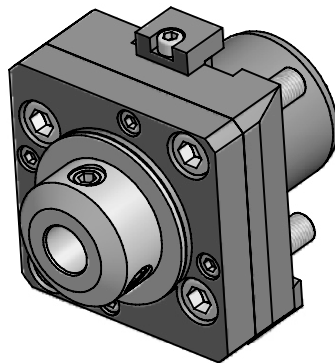
## ITI - Axial (straight) Drilling and Milling Head



**Part No.**  
**# 40.6020WNLB2000BMT**

Subject to technical modifications

Coolant	i	M1	M2	n1	n2	Tooling System	X
Ext.	1:1	50 Nm	50 Nm	6000 1/min	6000 1/min	Whistle Notch	X=(76.5mm)

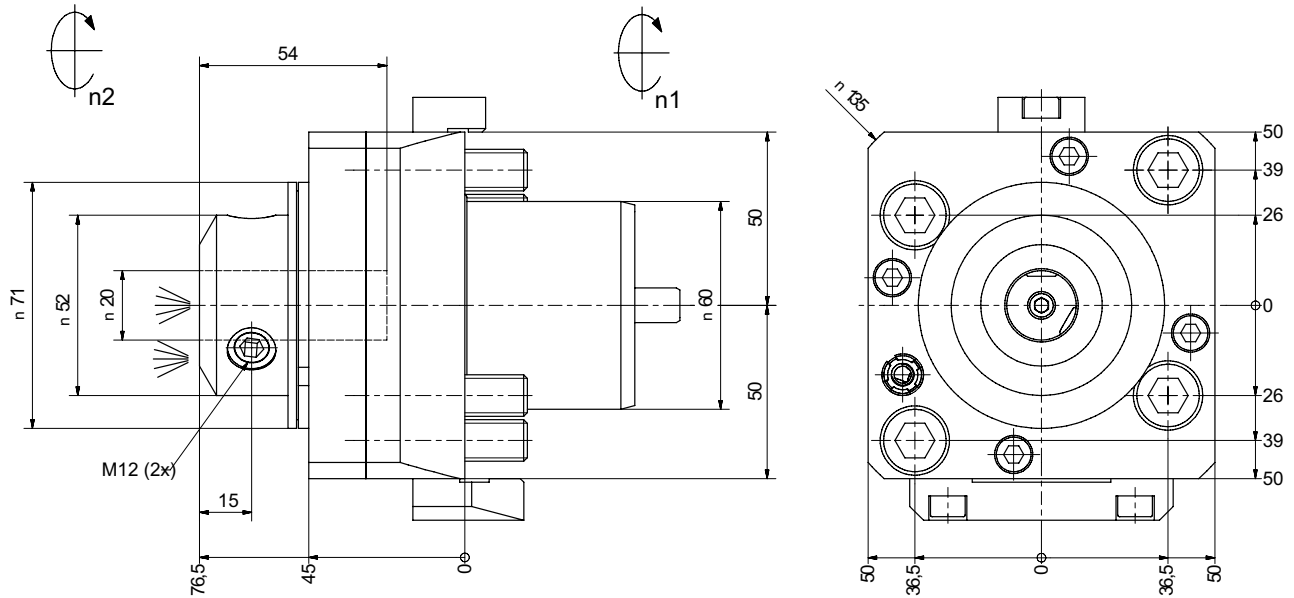


**ITI TOOLING COMPANY**

A Division of **INDEXING TECHNOLOGIES INC.**

37 Orchard Street., Ramsey, NJ. 07446 - Phone (201) 934-6333 - Fax (201) 934-6333 [www.indexingtechnologies.com](http://www.indexingtechnologies.com)  
[www.ititooling.com](http://www.ititooling.com)

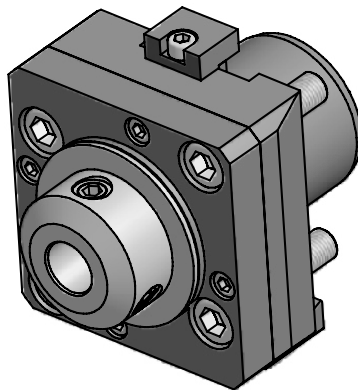
## ITI - Axial (straight) Drilling and Milling Head



**Part No.**  
**# 40.6020WNLB2000BMTIK**

Subject to technical modifications

Coolant	i	M1	M2	n1	n2	Tooling System	X
Int. / Ext.	1:1	50 Nm	50 Nm	6000 1/min	6000 1/min	Whistle Notch	X=(76.5mm)

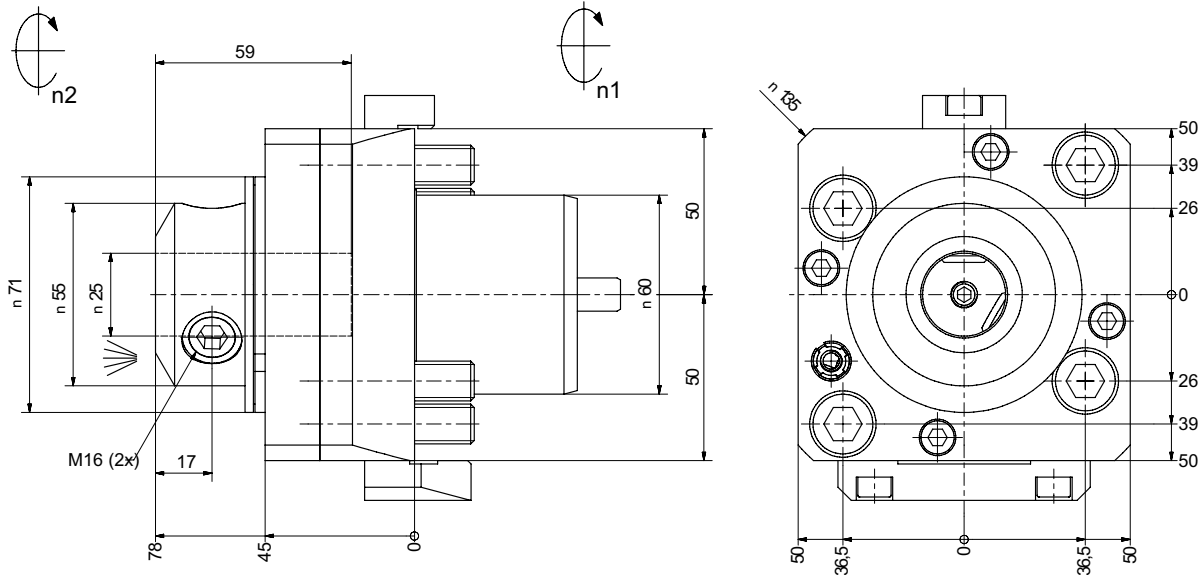


**ITI TOOLING COMPANY**

A Division of **INDEXING TECHNOLOGIES INC.**

37 Orchard Street., Ramsey, NJ. 07446 - Phone (201) 934-6333 - Fax (201) 934-6333 [www.indexingtechnologies.com](http://www.indexingtechnologies.com)  
[www.ititooling.com](http://www.ititooling.com)

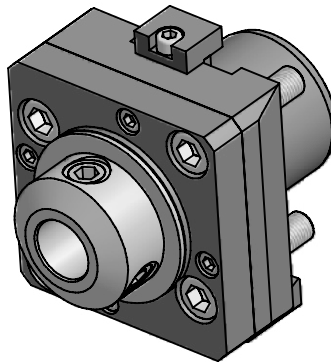
## ITI - Axial (straight) Drilling and Milling Head



**Part No.**  
**# 40.6025WNKRLB2000BMT**

**With Taper Roller Bearings**  
 Subject to technical modifications

Coolant	i	M1	M2	n1	n2	Tooling System	X
Ext.	1:1	50 Nm	50 Nm	4000 1/min	4000 1/min	Whistle Notch	X=(78mm)

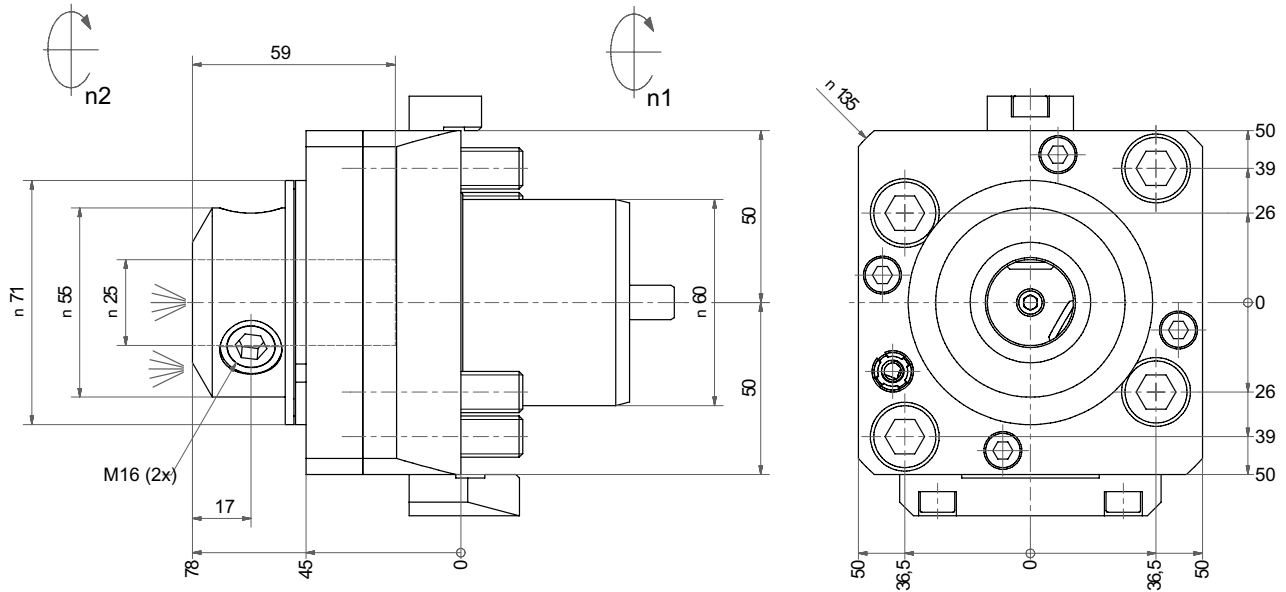


**ITI TOOLING COMPANY**

A Division of **INDEXING TECHNOLOGIES INC.**

37 Orchard Street., Ramsey, NJ. 07446 - Phone (201) 934-6333 - Fax (201) 934-6333 www.indexingtechnologies.com  
 www.ititooling.com

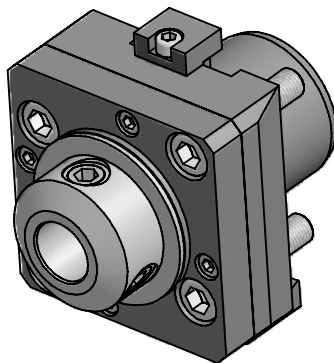
## ITI - Axial (straight) Drilling and Milling Head



**Part No.**  
**# 40.6025WNKRLB2000BMTIK**

**With Taper Roller Bearings**  
 Subject to technical modifications

Coolant	i	M1	M2	n1	n2	Tooling System	X
Int. / Ext.	1:1	50 Nm	50 Nm	4000 1/min	4000 1/min	Whistle Notch	X=(78mm)

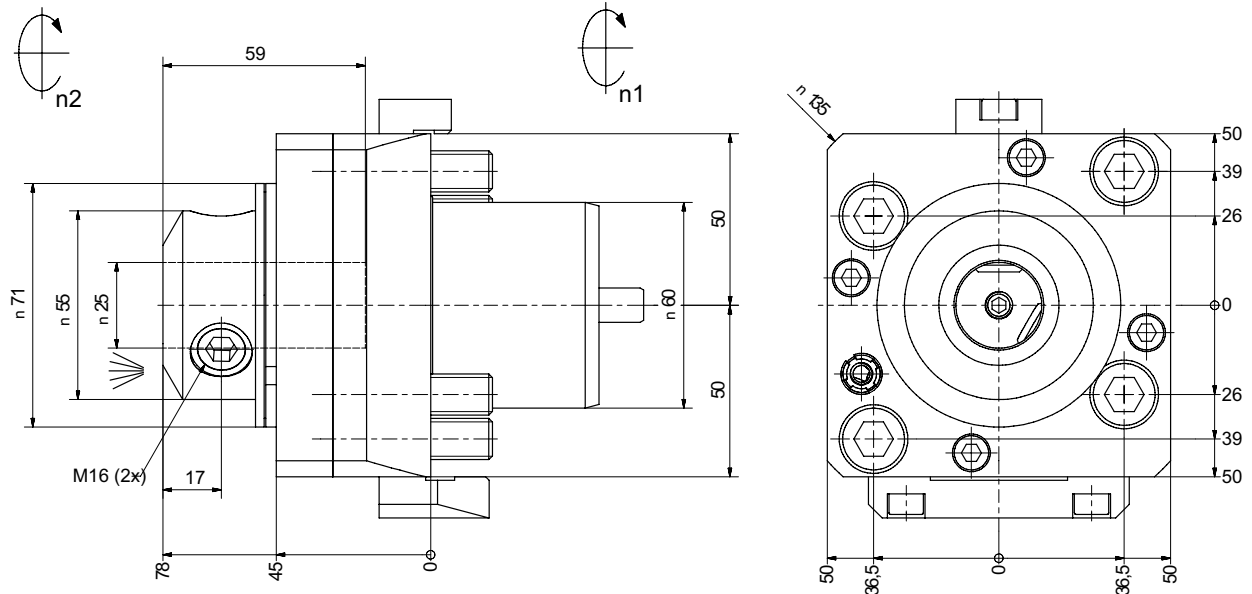


**ITI TOOLING COMPANY**

A Division of **INDEXING TECHNOLOGIES INC.**

37 Orchard Street., Ramsey, NJ. 07446 - Phone (201) 934-6333 - Fax (201) 934-6333 www.indexingtechnologies.com  
 www.ititooling.com

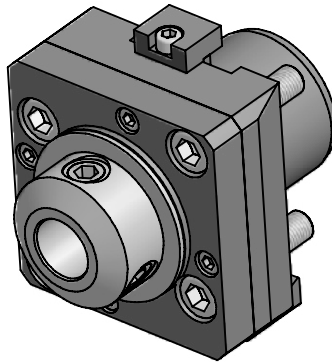
## ITI - Axial (straight) Drilling and Milling Head



**Part No.**  
**# 40.6025WNLB2000BMT**

Subject to technical modifications

Coolant	i	M1	M2	n1	n2	Tooling System	X
Ext.	1:1	50 Nm	50 Nm	6000 1/min	6000 1/min	Whistle Notch	X=(78mm)

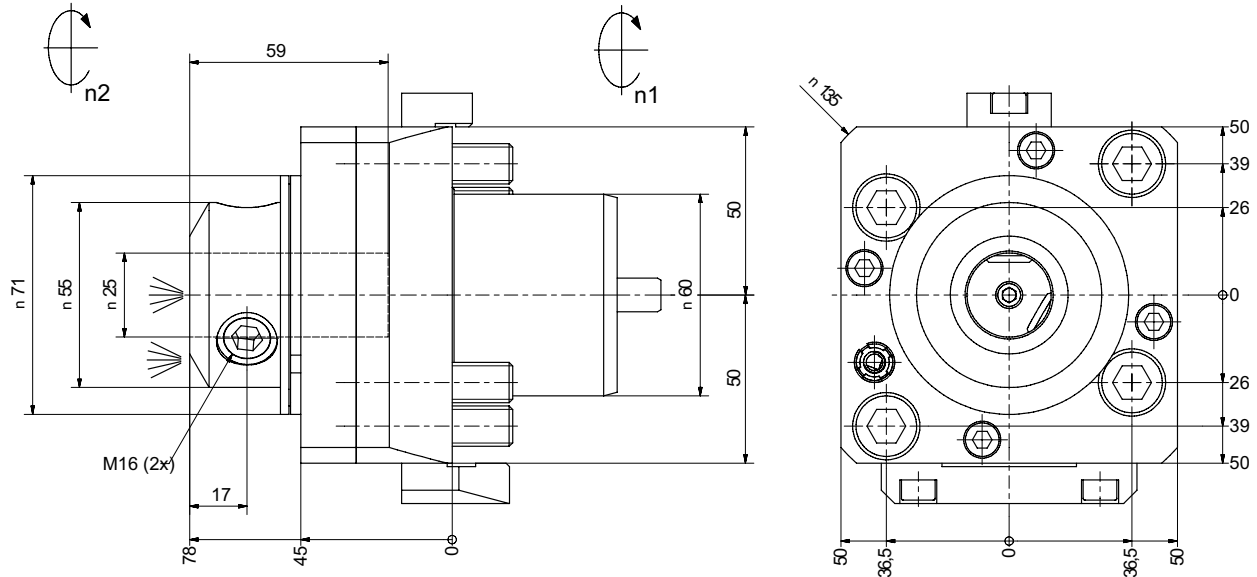


**ITI TOOLING COMPANY**

A Division of **INDEXING TECHNOLOGIES INC.**

37 Orchard Street., Ramsey, NJ. 07446 - Phone (201) 934-6333 - Fax (201) 934-6333 [www.indexingtechnologies.com](http://www.indexingtechnologies.com)  
[www.ititooling.com](http://www.ititooling.com)

## ITI - Axial (straight) Drilling and Milling Head

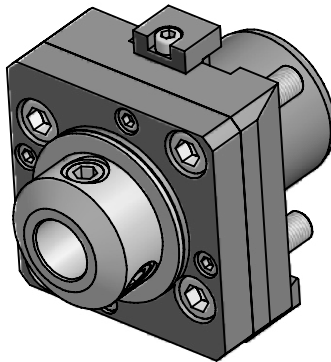


**Part No.**

**# 40.6025WNLB2000BMTIK**

Subject to technical modifications

Coolant	i	M1	M2	n1	n2	Tooling System	X
Int. / Ext.	1:1	50 Nm	50 Nm	6000 1/min	6000 1/min	Whistle Notch	X=(78mm)



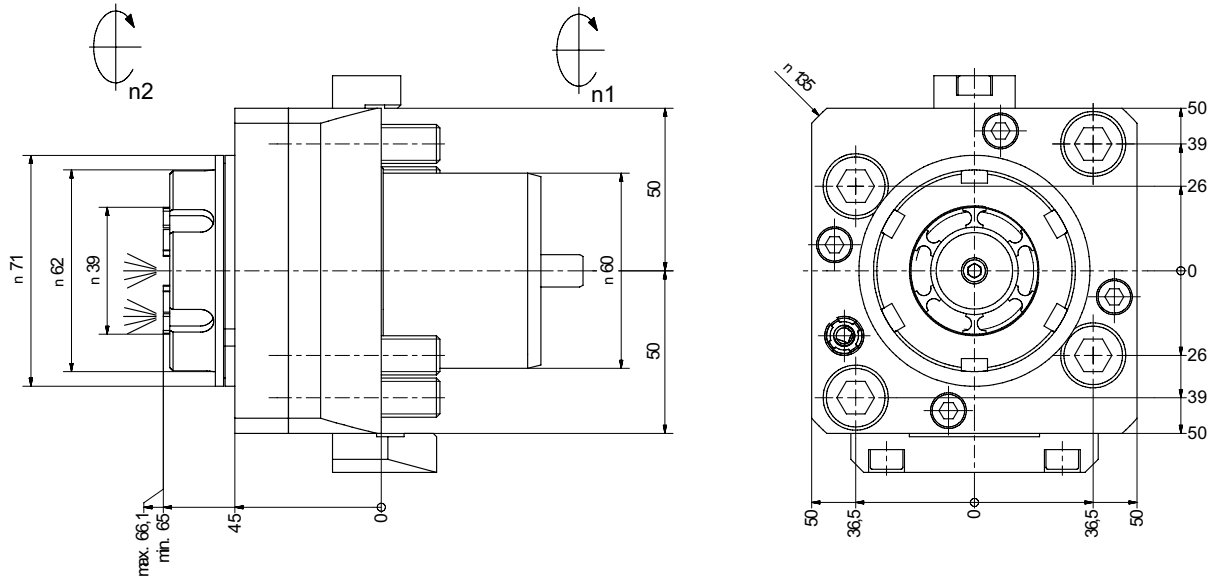
**ITI TOOLING COMPANY**

A Division of **INDEXING TECHNOLOGIES INC.**

37 Orchard Street., Ramsey, NJ. 07446 - Phone (201) 934-6333 - Fax (201) 934-6333 www.indexingtechnologies.com  
www.ititooling.com



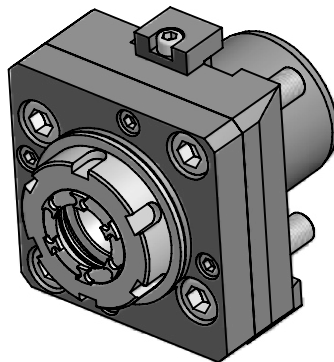
## ITI - Axial (straight) Drilling and Milling Head



**Part No.**  
**# 40.6032LB2000BMTIKIM**

Subject to technical modifications

Coolant	i	M1	M2	n1	n2	Collet	Clamping range
Int. / Ext.	1:1	50 Nm	50 Nm	6000 1/min	6000 1/min	ER32	2.0 - 20.0

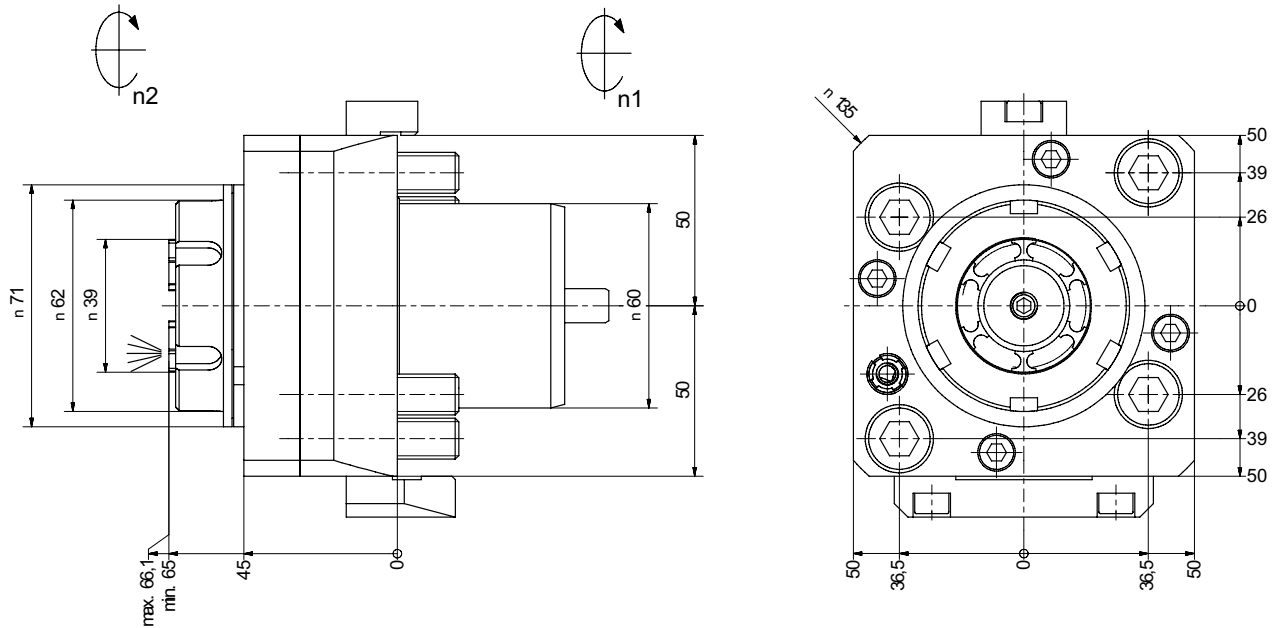


**ITI TOOLING COMPANY**

A Division of **INDEXING TECHNOLOGIES INC.**

37 Orchard Street., Ramsey, NJ. 07446 - Phone (201) 934-6333 - Fax (201) 934-6333 www.indexingtechnologies.com  
 www.ititooling.com

## ITI - Axial (straight) Drilling and Milling Head

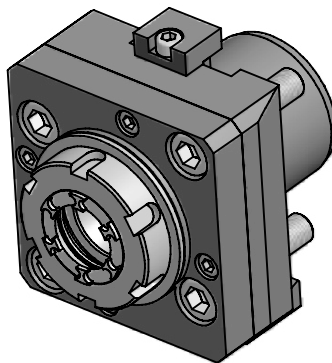


Part No.

# 40.6032LB2000BMTIM

Subject to technical modifications

Coolant	i	M1	M2	n1	n2	Collet	Clamping range	Tapping Collet
Ext.	1:1	50 Nm	50 Nm	6000 1/min	6000 1/min	ER32	2.0 - 20.0	ET-1-32 M5-M12

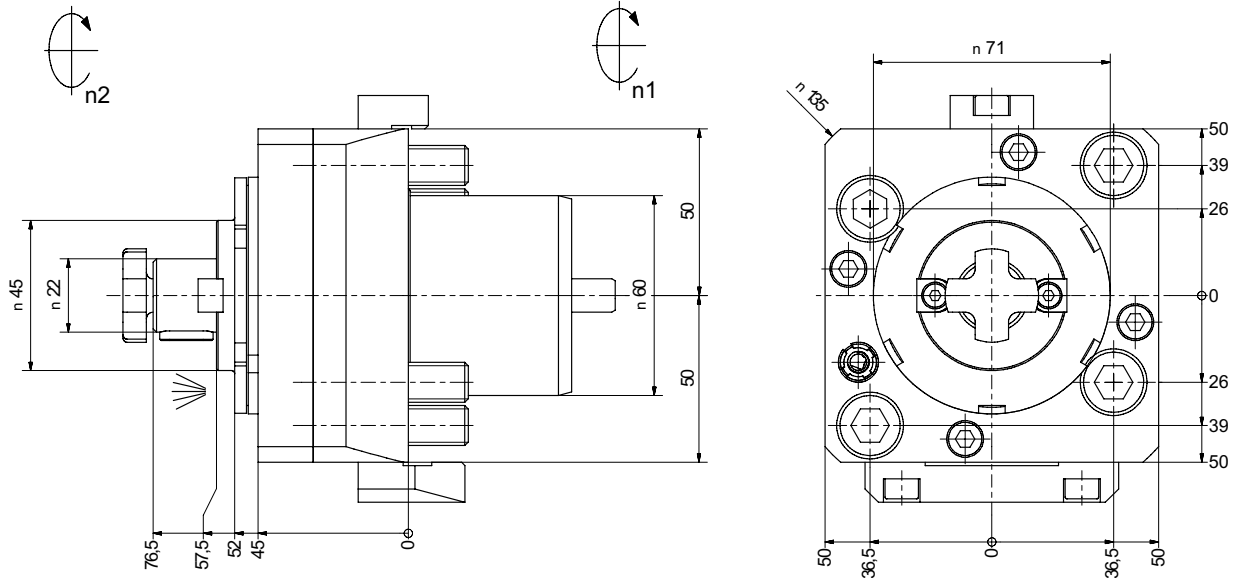


**ITI** TOOLING COMPANY

A Division of **INDEXING** TECHNOLOGIES INC.

37 Orchard Street., Ramsey, NJ. 07446 - Phone (201) 934-6333 - Fax (201) 934-6333 www.indexingtechnologies.com  
www.ititooling.com

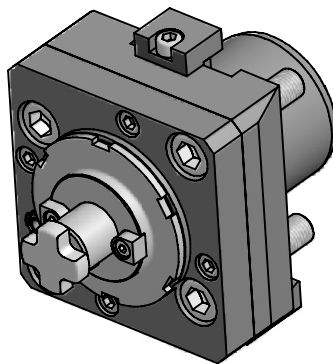
## ITI - Axial (straight) Milling Head



**Part No.**  
**# 42.6022LB2000BMT**

**With Taper Roller Bearings**  
 Subject to technical modifications

Coolant	i	M1	M2	n1	n2	Arbor
Ext.	1:1	50 Nm	50 Nm	4000 1/min	4000 1/min	22mm

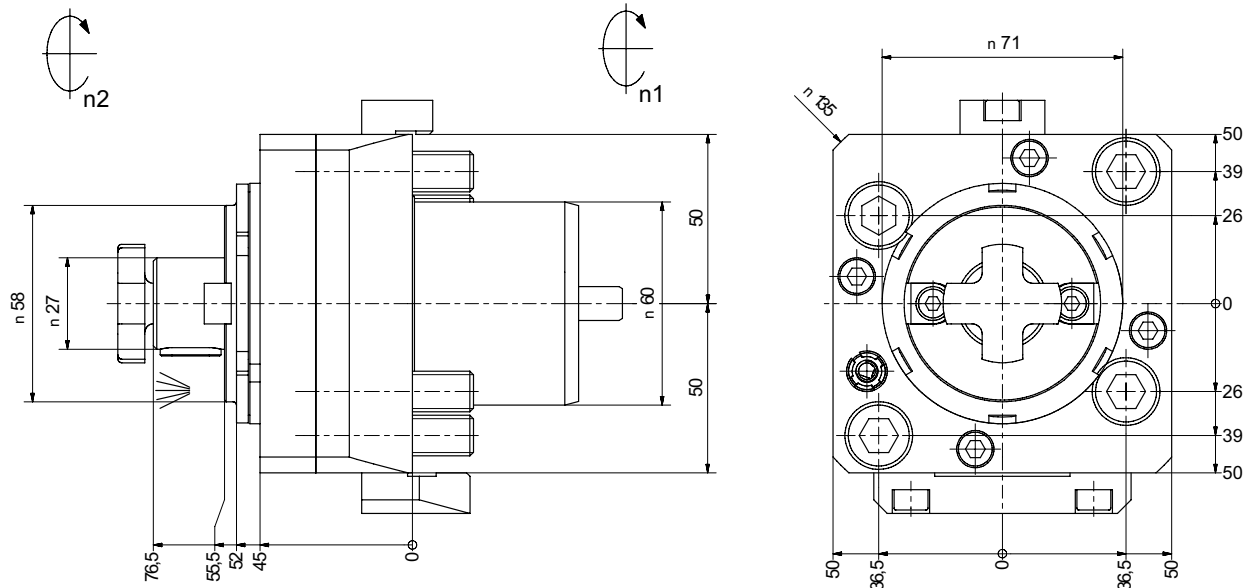


**ITI TOOLING COMPANY**

A Division of **INDEXING TECHNOLOGIES INC.**

37 Orchard Street., Ramsey, NJ. 07446 - Phone (201) 934-6333 - Fax (201) 934-6333 [www.indexingtechnologies.com](http://www.indexingtechnologies.com)  
[www.ititooling.com](http://www.ititooling.com)

## ITI - Axial (straight) Milling Head

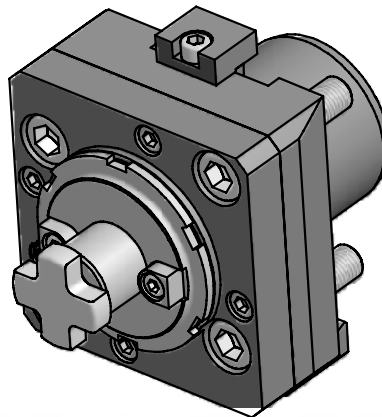


**Part No.**  
**# 42.6027LB2000BMT**

**With Taper Roller Bearings**

Subject to technical modifications

Coolant	i	M1	M2	n1	n2	Arbor
Ext.	1:1	50 Nm	50 Nm	4000 1/min	4000 1/min	27mm

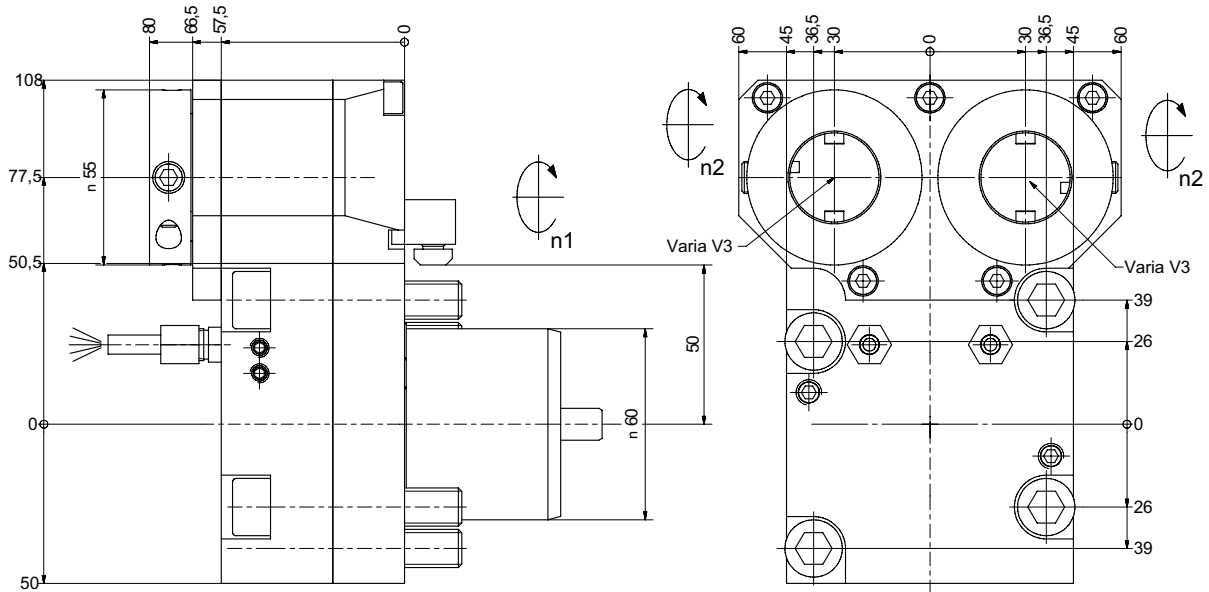


**ITI TOOLING COMPANY**

A Division of **INDEXING TECHNOLOGIES INC.**

37 Orchard Street., Ramsey, NJ. 07446 - Phone (201) 934-6333 - Fax (201) 934-6333 www.indexingtechnologies.com  
 www.ititooling.com

## ITI - Axial (straight) Drilling and Milling Head Offset

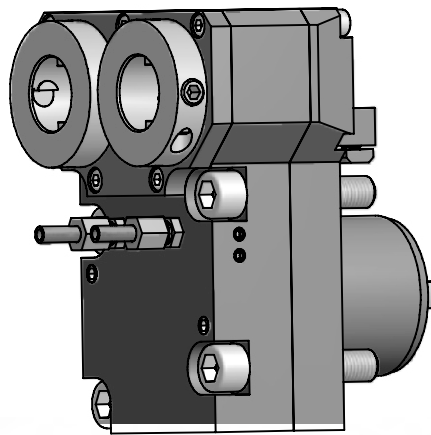


**Part No.**

**# 50.60V3DLB2000BMTY30**

Subject to technical modifications

Coolant	i	M1	M2	n1	n2	Tooling System	X
Ext.	1:1	50 Nm	50 Nm	6000 1/min	6000 1/min	Varia V3	X=(80mm)

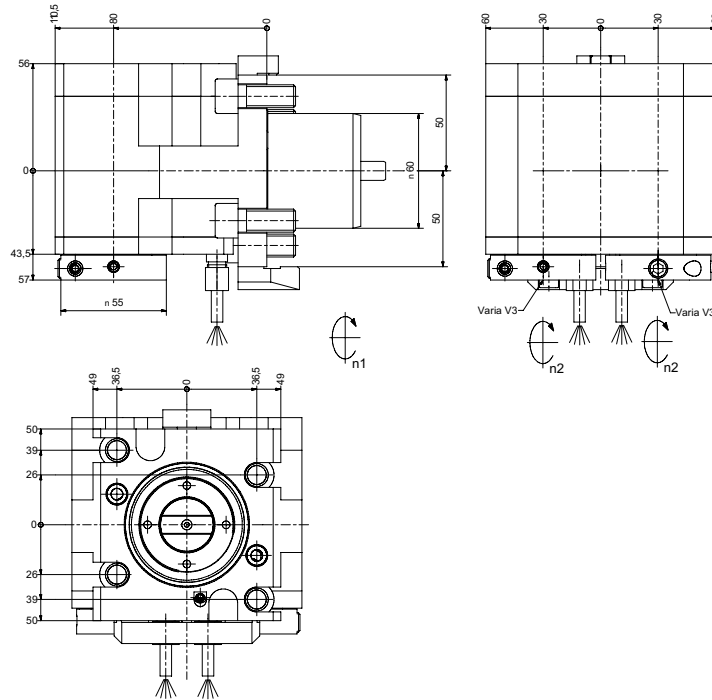


**ITI TOOLING COMPANY**

A Division of **INDEXING TECHNOLOGIES INC.**

37 Orchard Street., Ramsey, NJ. 07446 - Phone (201) 934-6333 - Fax (201) 934-6333 www.indexingtechnologies.com  
www.ititooling.com

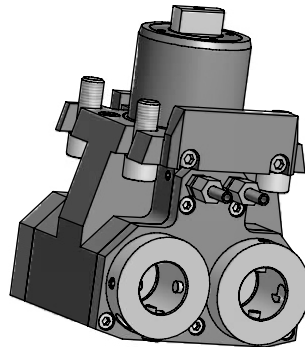
## ITI - Radial (90°) Drilling and Milling Head



**Part No.**  
**# 60.60V3DLB2000BMTY30**

Subject to technical modifications

Coolant	i	M1	M2	n1	n2	Tooling System	X
Ext.	1:1	50 Nm	50 Nm	6000 1/min	6000 1/min	Varia V3	X=(80mm)

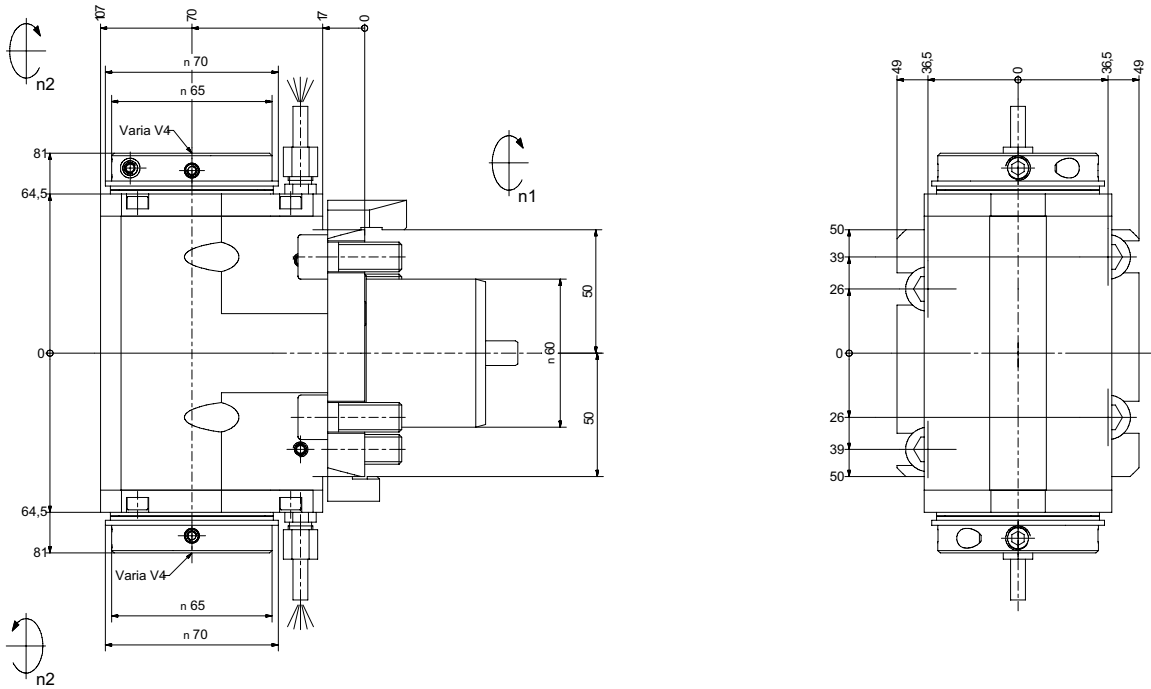


**ITI TOOLING COMPANY**

A Division of **INDEXING TECHNOLOGIES INC.**

37 Orchard Street., Ramsey, NJ. 07446 - Phone (201) 934-6333 - Fax (201) 934-6333 www.indexingtechnologies.com  
 www.ititooling.com

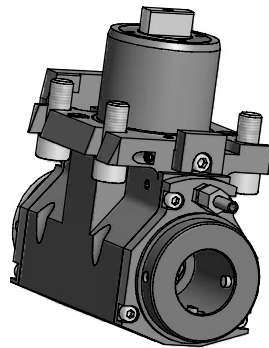
## ITI - Radial (90°) Drilling and Milling Head



**Part No.**  
**# 60.60V4DLB2000BMT**

Subject to technical modifications

Coolant	i	M1	M2	n1	n2	Tooling System	X
Ext.	1:1	50 Nm	50 Nm	6000 1/min	6000 1/min	Varia V4	X=(70mm)

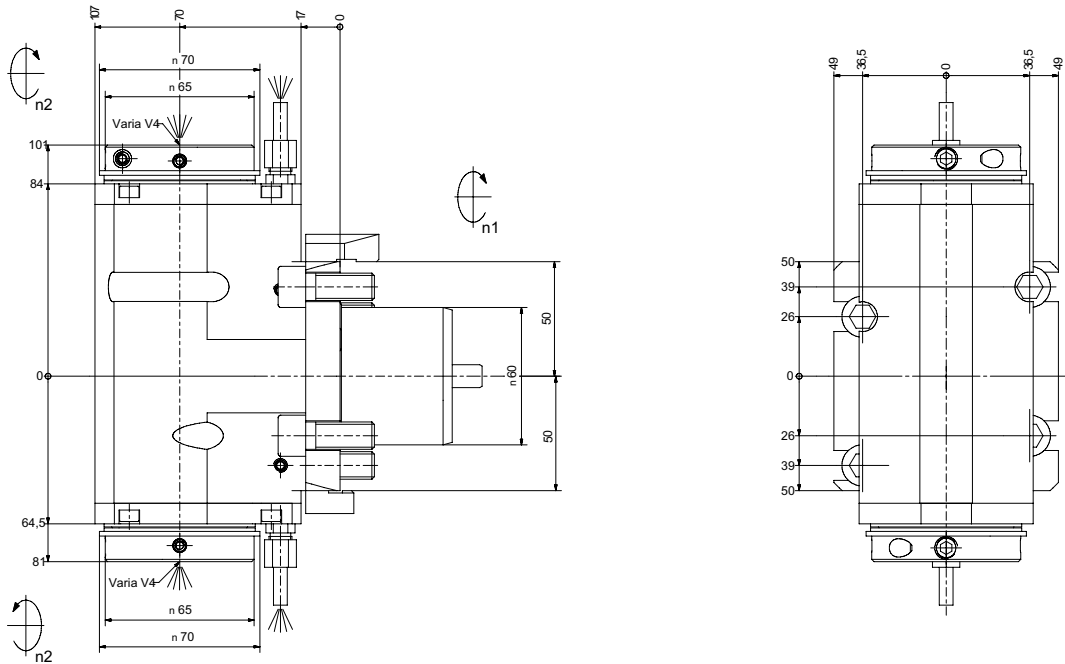


**ITI TOOLING COMPANY**

A Division of **INDEXING TECHNOLOGIES INC.**

37 Orchard Street., Ramsey, NJ. 07446 - Phone (201) 934-6333 - Fax (201) 934-6333 www.indexingtechnologies.com  
 www.ititooling.com

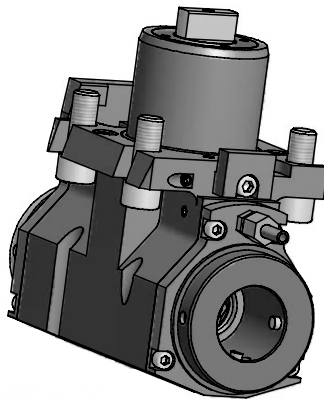
## ITI - Radial (90°) Drilling and Milling Head



**Part No.**  
**# 60.60V4DLB2000BMTIK**

Subject to technical modifications

Coolant	i	M1	M2	n1	n2	Tooling System	X
Int. / Ext.	1:1	50 Nm	50 Nm	6000 1/min	6000 1/min	Varia V4	X=(70mm)



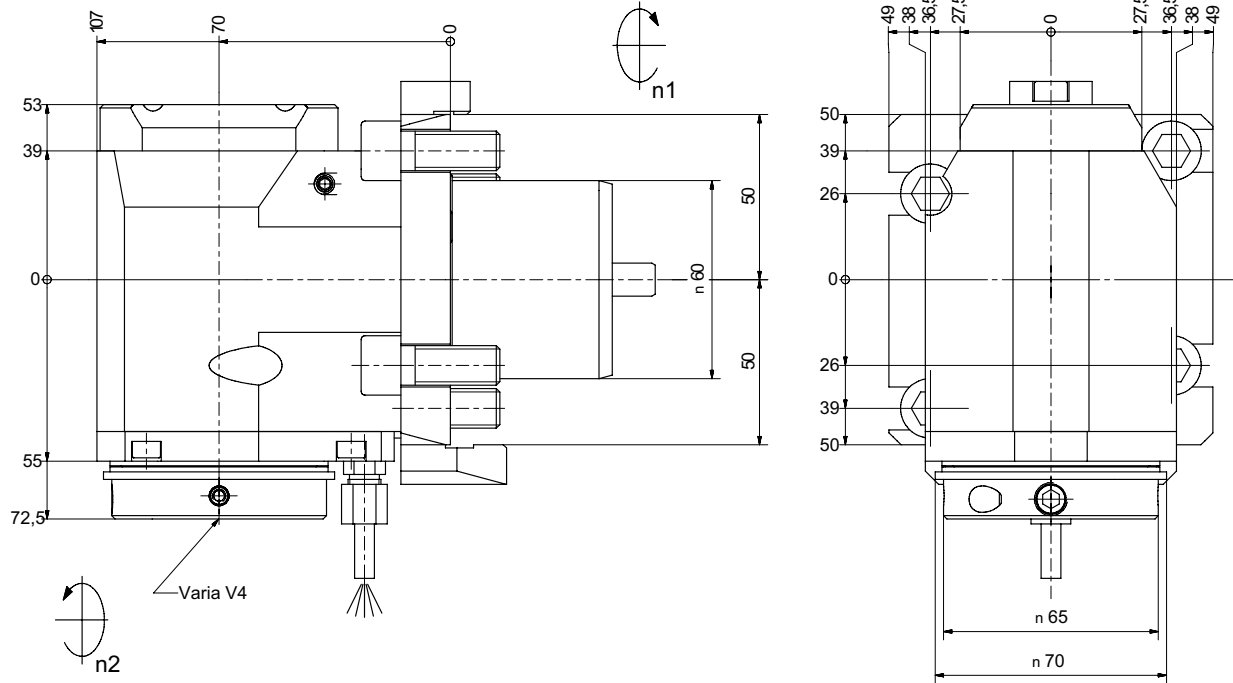
**ITI TOOLING COMPANY**

A Division of **INDEXING TECHNOLOGIES INC.**

37 Orchard Street., Ramsey, NJ. 07446 - Phone (201) 934-6333 - Fax (201) 934-6333 [www.indexingtechnologies.com](http://www.indexingtechnologies.com)  
[www.ititooling.com](http://www.ititooling.com)



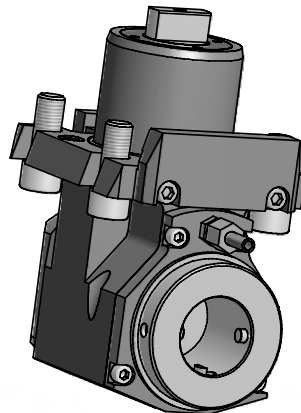
## ITI - Radial (90°) Drilling and Milling Head



**Part No.**  
**# 60.60V4LB2000BMT**

Subject to technical modifications

Coolant	i	M1	M2	n1	n2	Tooling System	X
Ext.	1:1	50 Nm	50 Nm	6000 1/min	6000 1/min	Varia V4	X=(70mm)

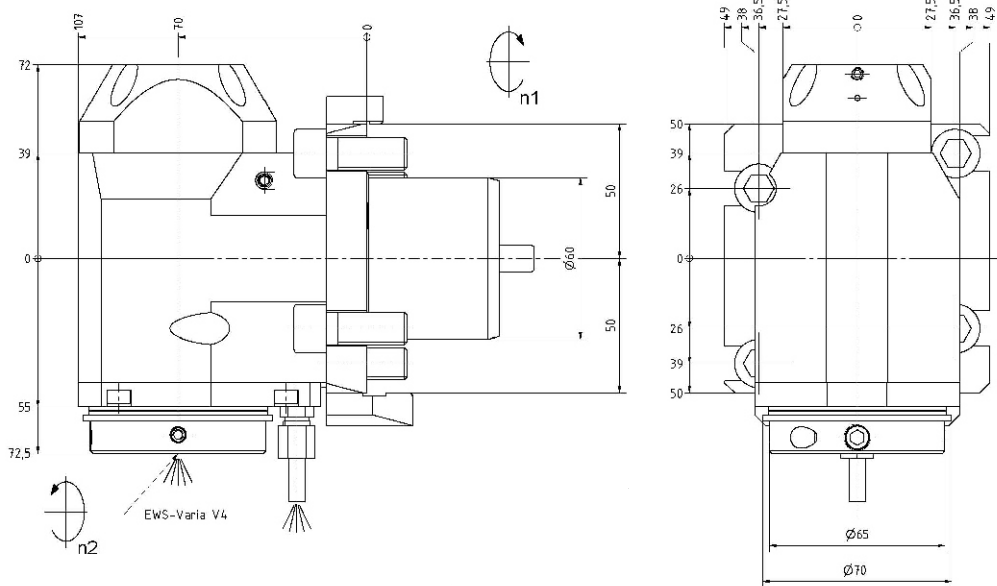


**ITI TOOLING COMPANY**

A Division of **INDEXING TECHNOLOGIES INC.**

37 Orchard Street., Ramsey, NJ. 07446 - Phone (201) 934-6333 - Fax (201) 934-6333 [www.indexingtechnologies.com](http://www.indexingtechnologies.com)  
[www.ititooling.com](http://www.ititooling.com)

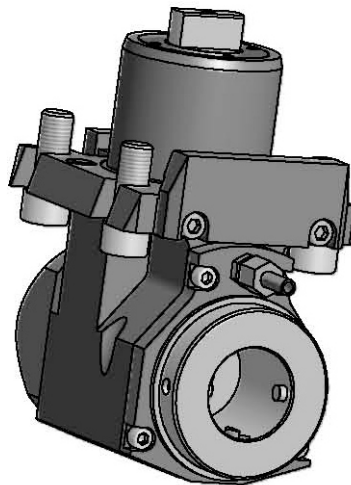
## ITI - Radial (90°) Drilling and Milling Head



**Part No.**  
**# 60.60V4LB2000BMTIK**

Subject to technical modifications

Coolant	i	M1	M2	n1	n2	Tooling System	X
Int. / Ext.	1:1	50 Nm	50 Nm	6000 1/min	6000 1/min	Varia V4	X=(70mm)

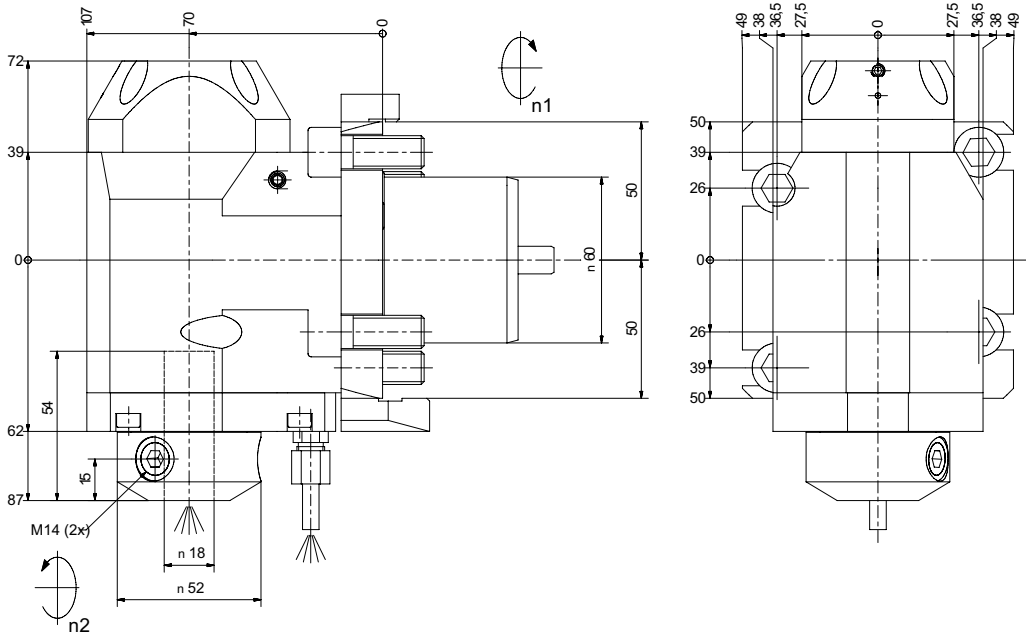


**ITI TOOLING COMPANY**

A Division of **INDEXING TECHNOLOGIES INC.**

37 Orchard Street., Ramsey, NJ. 07446 - Phone (201) 934-6333 - Fax (201) 934-6333 [www.indexingtechnologies.com](http://www.indexingtechnologies.com)  
[www.ititooling.com](http://www.ititooling.com)

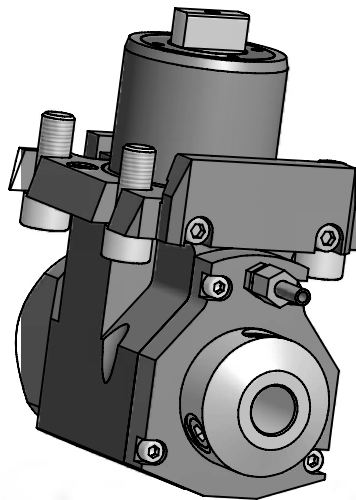
## ITI - Radial (90°) Drilling and Milling Head



**Part No.**  
**# 60.6018WKNRLB2000BMTIK**

**With Taper Roller Bearings**  
 Subject to technical modifications

Coolant	i	M1	M2	n1	n2	Tooling System	X
Int. / Ext.	1:1	50 Nm	50 Nm	6000 1/min	6000 1/min	Whistle Notch	X=(70mm)

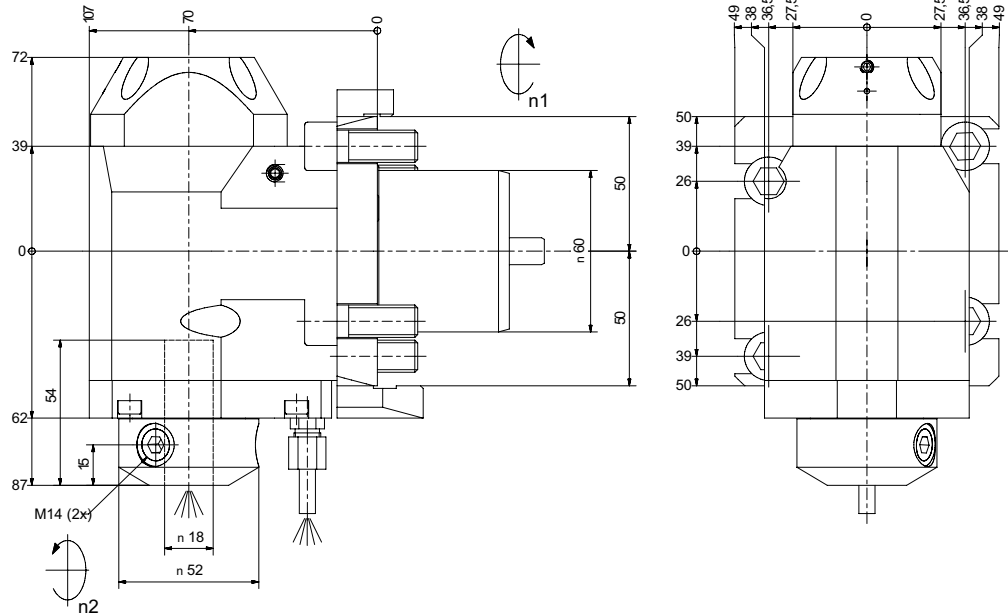


**ITI TOOLING COMPANY**

A Division of **INDEXING TECHNOLOGIES INC.**

37 Orchard Street., Ramsey, NJ. 07446 - Phone (201) 934-6333 - Fax (201) 934-6333 www.indexingtechnologies.com  
 www.ititooling.com

## ITI - Radial (90°) Drilling and Milling Head

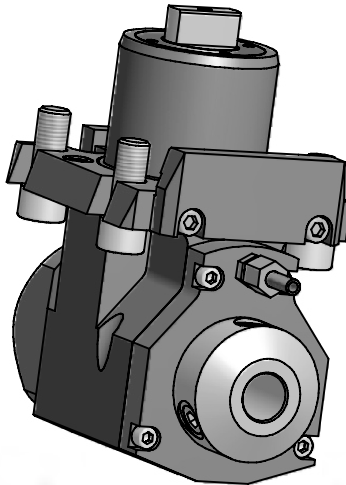


**Part No.**

**# 60.6018WNLB2000BMTIK**

Subject to technical modifications

Coolant	i	M1	M2	n1	n2	Tooling System	X
Int. / Ext.	1:1	50 Nm	50 Nm	6000 1/min	6000 1/min	Whistle Notch	X=(70mm)

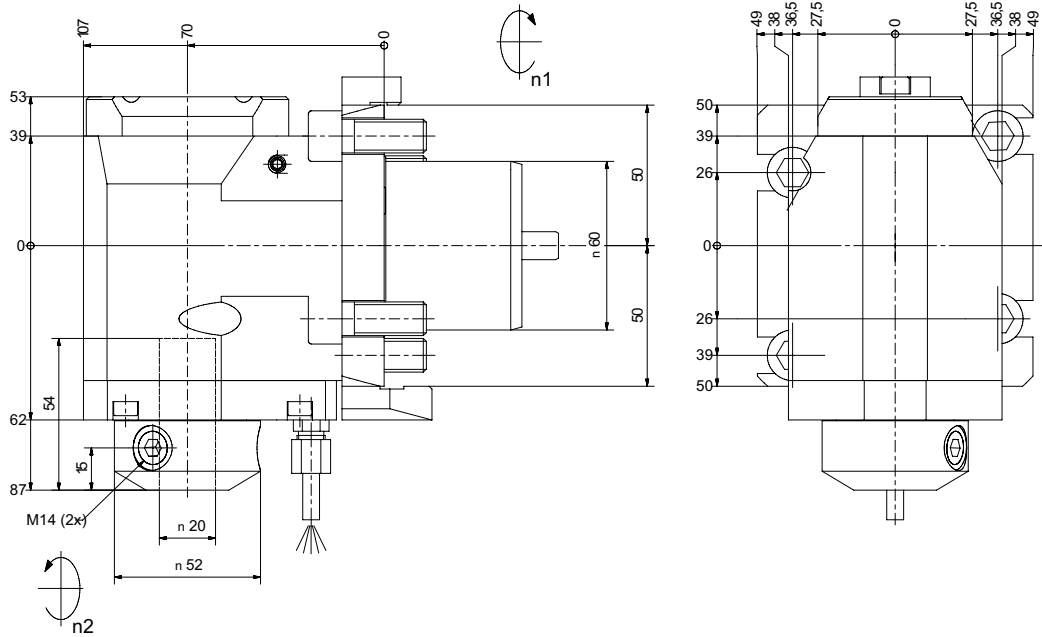


**ITI TOOLING COMPANY**

A Division of **INDEXING TECHNOLOGIES INC.**

37 Orchard Street., Ramsey, NJ. 07446 - Phone (201) 934-6333 - Fax (201) 934-6333 www.indexingtechnologies.com  
www.ititooling.com

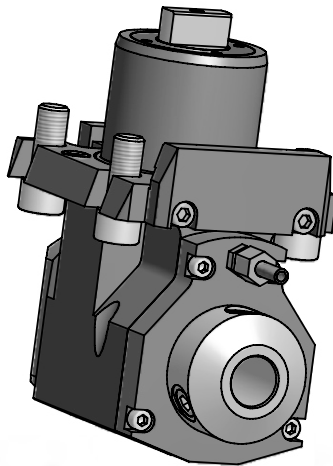
## ITI - Radial (90°) Drilling and Milling Head



**Part No.**  
**# 60.6020WNKRLB2000BMT**

**With Taper Roller Bearings**  
 Subject to technical modifications

Coolant	i	M1	M2	n1	n2	Tooling System	X
Ext.	1:1	50 Nm	50 Nm	6000 1/min	6000 1/min	Whistle Notch	X=(70mm)

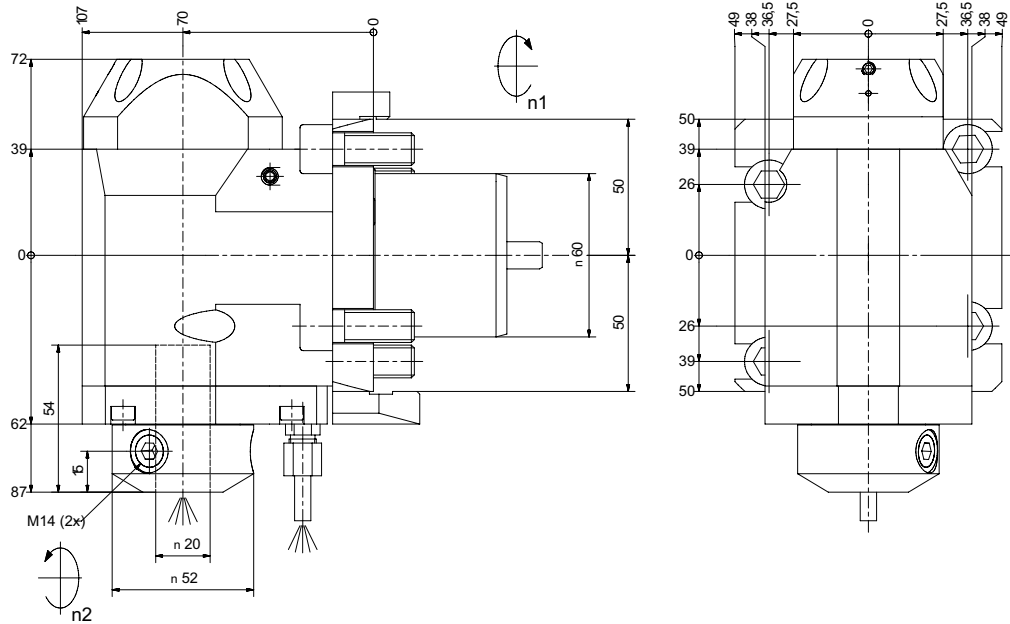


**ITI TOOLING COMPANY**

A Division of **INDEXING TECHNOLOGIES INC.**

37 Orchard Street., Ramsey, NJ. 07446 - Phone (201) 934-6333 - Fax (201) 934-6333 www.indexingtechnologies.com  
 www.ititooling.com

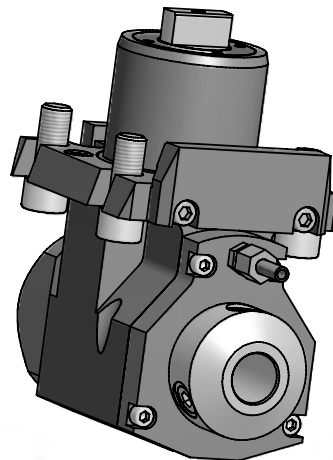
## ITI - Radial (90°) Drilling and Milling Head



**Part No.**  
**# 60.6020WNKRLB2000BMTIK**

**With Taper Roller Bearings**  
 Subject to technical modifications

Coolant	i	M1	M2	n1	n2	Tooling System	X
Int. / Ext.	1:1	50 Nm	50 Nm	6000 1/min	6000 1/min	Whistle Notch	X=(70mm)

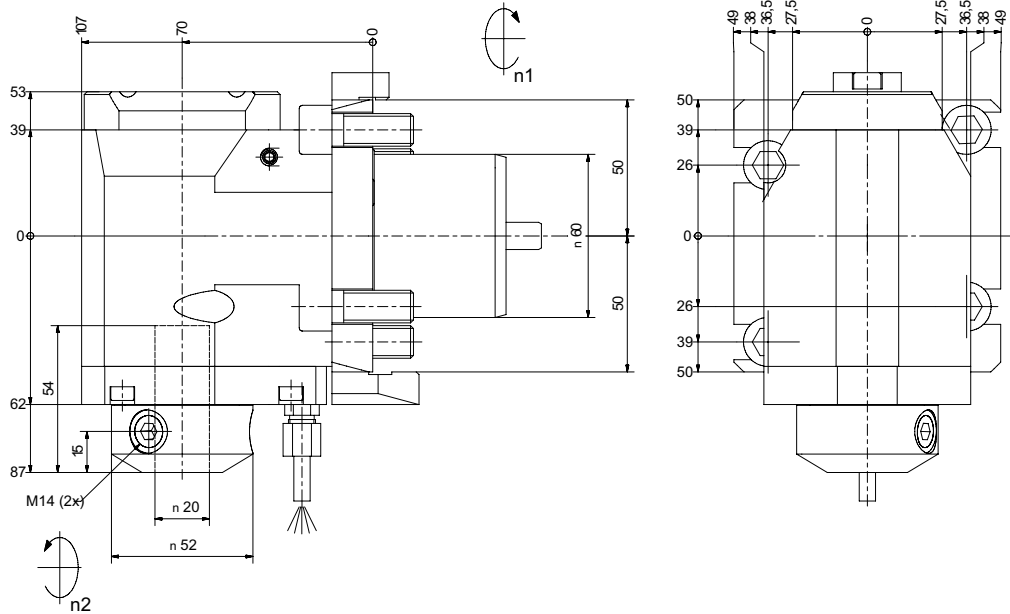


**ITI TOOLING COMPANY**

A Division of **INDEXING TECHNOLOGIES INC.**

37 Orchard Street., Ramsey, NJ. 07446 - Phone (201) 934-6333 - Fax (201) 934-6333 www.indexingtechnologies.com  
 www.ititooling.com

## ITI - Radial (90°) Drilling and Milling Head

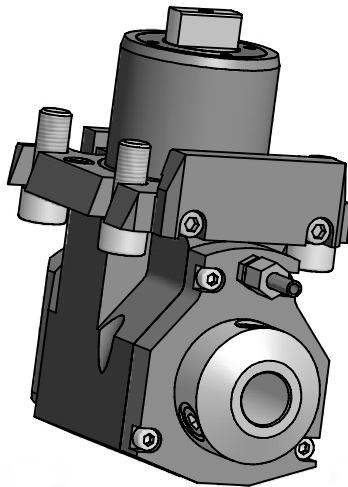


**Part No.**

**# 60.6020WNLB2000BMT**

Subject to technical modifications

Coolant	i	M1	M2	n1	n2	Tooling System	X
Ext.	1:1	50 Nm	50 Nm	6000 1/min	6000 1/min	Whistle Notch	X=(70mm)

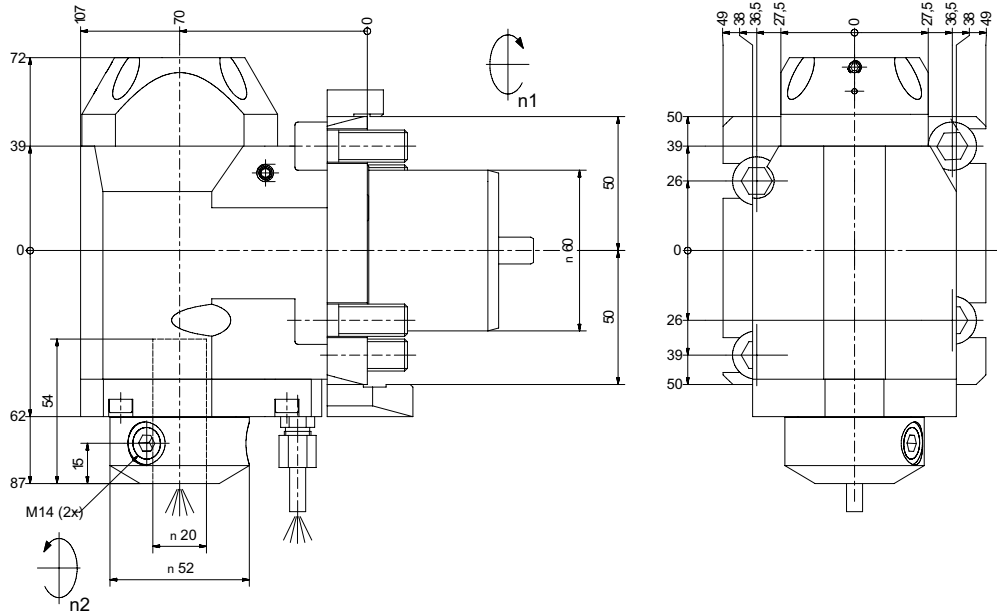


**ITI TOOLING COMPANY**

A Division of **INDEXING TECHNOLOGIES INC.**

37 Orchard Street., Ramsey, NJ. 07446 - Phone (201) 934-6333 - Fax (201) 934-6333 [www.indexingtechnologies.com](http://www.indexingtechnologies.com)  
[www.ititooling.com](http://www.ititooling.com)

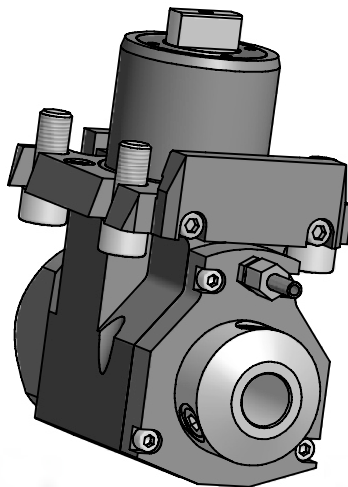
## ITI - Radial (90°) Drilling and Milling Head



**Part No.**  
**# 60.602WNLB2000BMTIK**

Subject to technical modifications

Coolant	i	M1	M2	n1	n2	Tooling System	X
Int. / Ext.	1:1	50 Nm	50 Nm	6000 1/min	6000 1/min	Whistle Notch	X=(70mm)



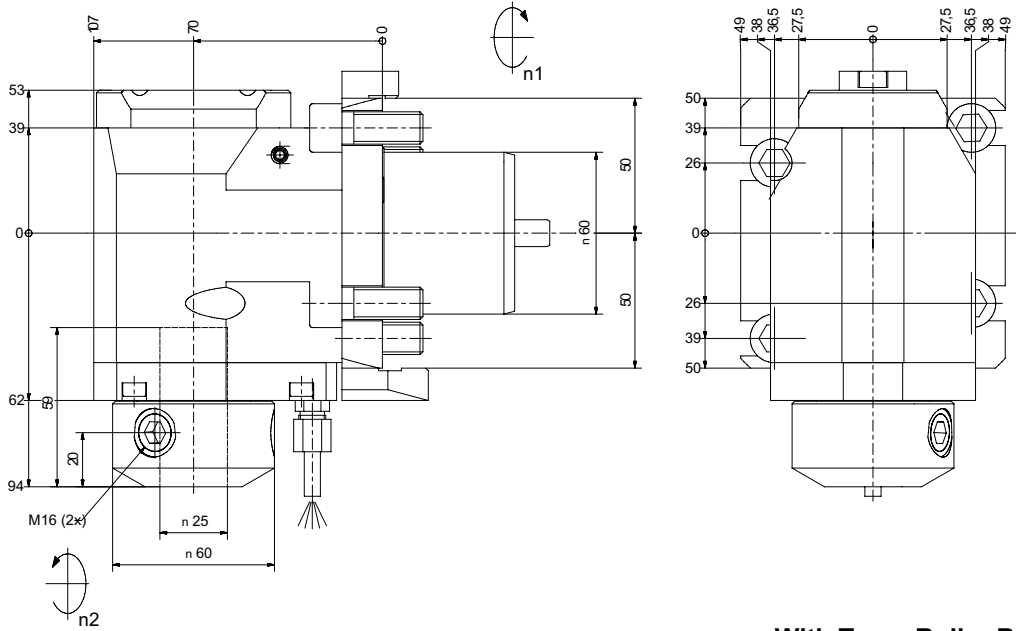
**ITI TOOLING COMPANY**

A Division of **INDEXING TECHNOLOGIES INC.**

37 Orchard Street., Ramsey, NJ. 07446 - Phone (201) 934-6333 - Fax (201) 934-6333 www.indexingtechnologies.com  
 www.ititooling.com



## ITI - Radial (90°) Drilling and Milling Head

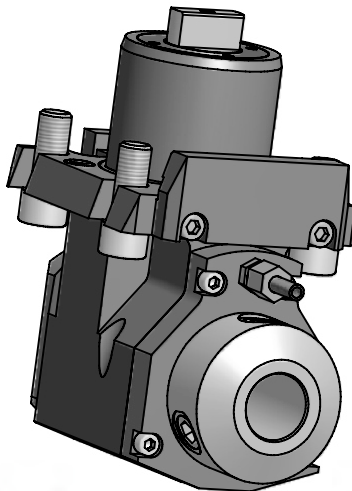


**Part No.**  
**# 60.6025WNKRLB2000BMT**

**With Taper Roller Bearings**

Subject to technical modifications

Coolant	i	M1	M2	n1	n2	Tooling System	X
Ext.	1:1	50 Nm	50 Nm	6000 1/min	6000 1/min	Whistle Notch	X=(70mm)

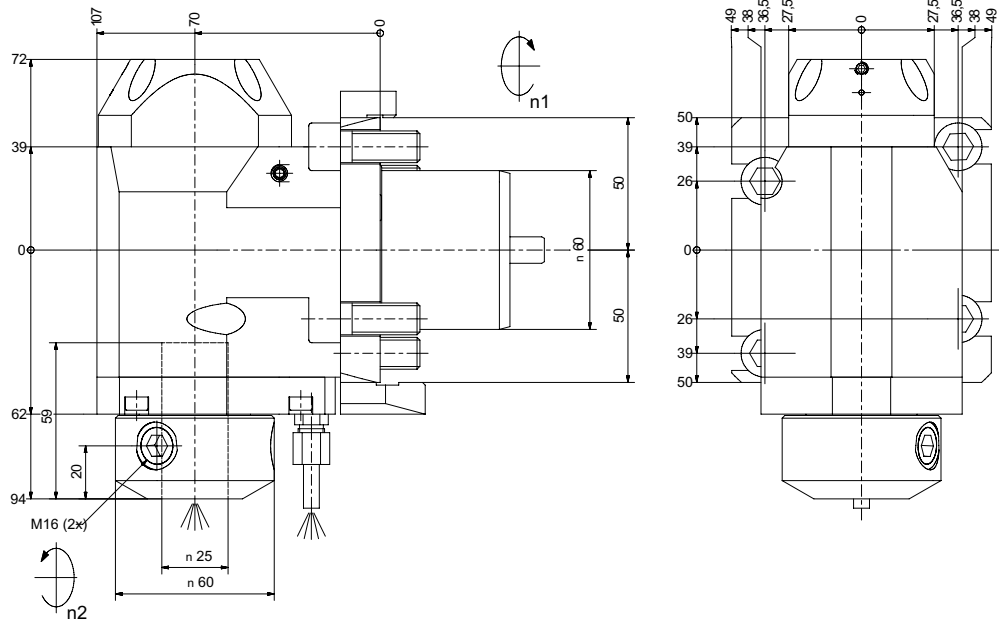


**ITI TOOLING COMPANY**

A Division of **INDEXING TECHNOLOGIES INC.**

37 Orchard Street., Ramsey, NJ. 07446 - Phone (201) 934-6333 - Fax (201) 934-6333 www.indexingtechnologies.com  
 www.ititooling.com

## ITI - Radial (90°) Drilling and Milling Head



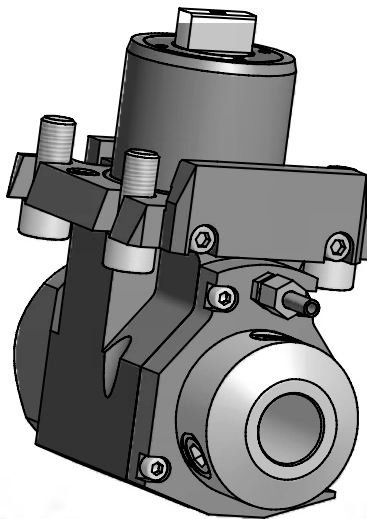
**Part No.**

**# 60.6025WNKRLB2000BMTIK**

**With Taper Roller Bearings**

Subject to technical modifications

Coolant	i	M1	M2	n1	n2	Tooling System	X
Int. / Ext.	1:1	50 Nm	50 Nm	6000 1/min	6000 1/min	Whistle Notch	X=(70mm)

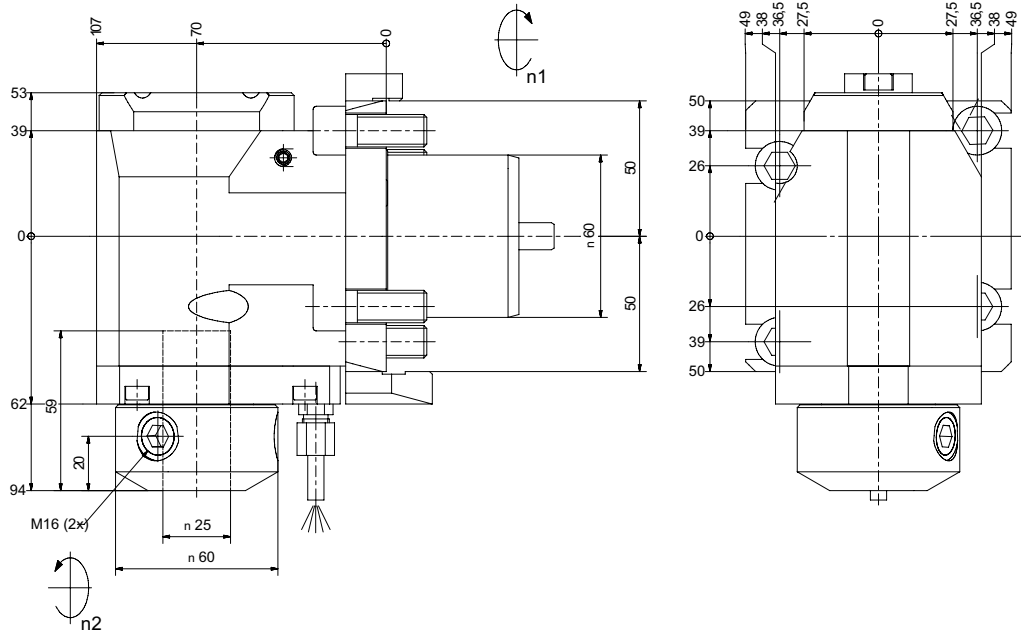


**ITI TOOLING COMPANY**

A Division of **INDEXING TECHNOLOGIES INC.**

37 Orchard Street., Ramsey, NJ. 07446 - Phone (201) 934-6333 - Fax (201) 934-6333 [www.indexingtechnologies.com](http://www.indexingtechnologies.com)  
[www.ititooling.com](http://www.ititooling.com)

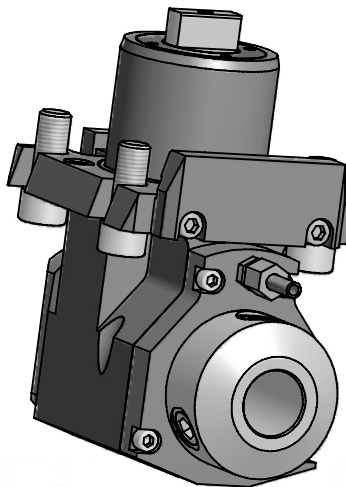
## ITI - Radial (90°) Drilling and Milling Head



**Part No.**  
**# 60.6025WNLB2000BMT**

Subject to technical modifications

Coolant	i	M1	M2	n1	n2	Tooling System	X
Ext.	1:1	50 Nm	50 Nm	6000 1/min	6000 1/min	Whistle Notch	X=(70mm)

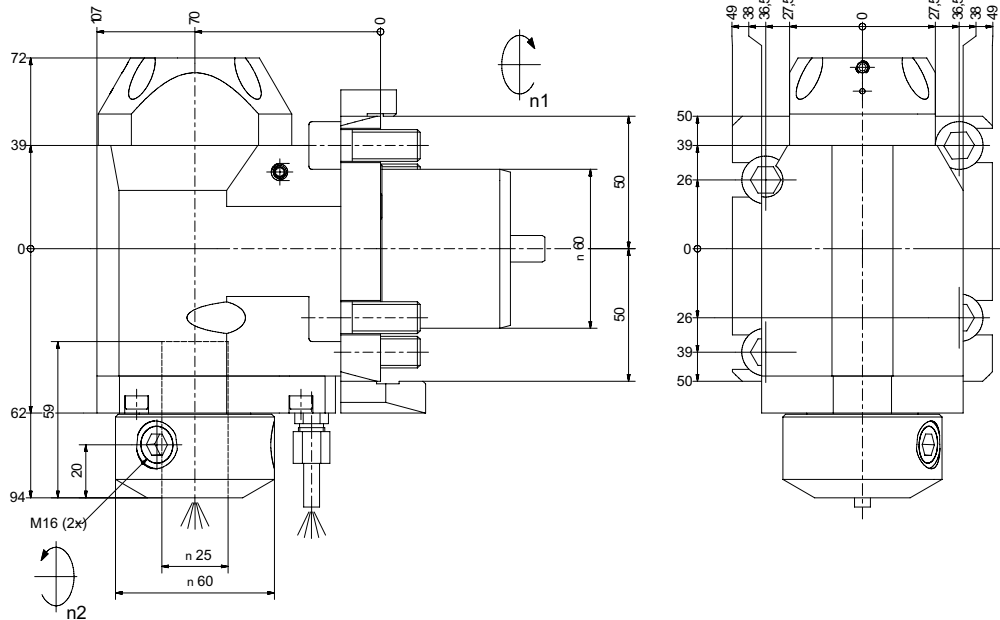


**ITI TOOLING COMPANY**

A Division of **INDEXING TECHNOLOGIES INC.**

37 Orchard Street., Ramsey, NJ. 07446 - Phone (201) 934-6333 - Fax (201) 934-6333 [www.indexingtechnologies.com](http://www.indexingtechnologies.com)  
[www.ititooling.com](http://www.ititooling.com)

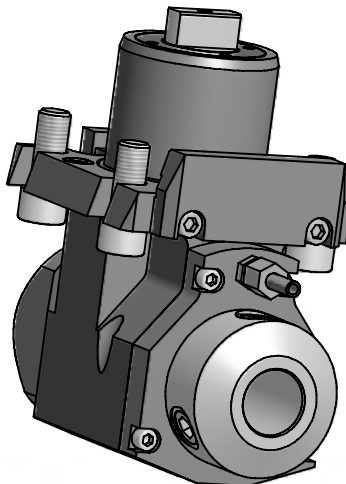
## ITI - Radial (90°) Drilling and Milling Head



**Part No.**  
**# 60.6025WNLB2000BMTIK**

Subject to technical modifications

Coolant	i	M1	M2	n1	n2	Tooling System	X
Int. / Ext.	1:1	50 Nm	50 Nm	6000 1/min	6000 1/min	Whistle Notch	X=(70mm)

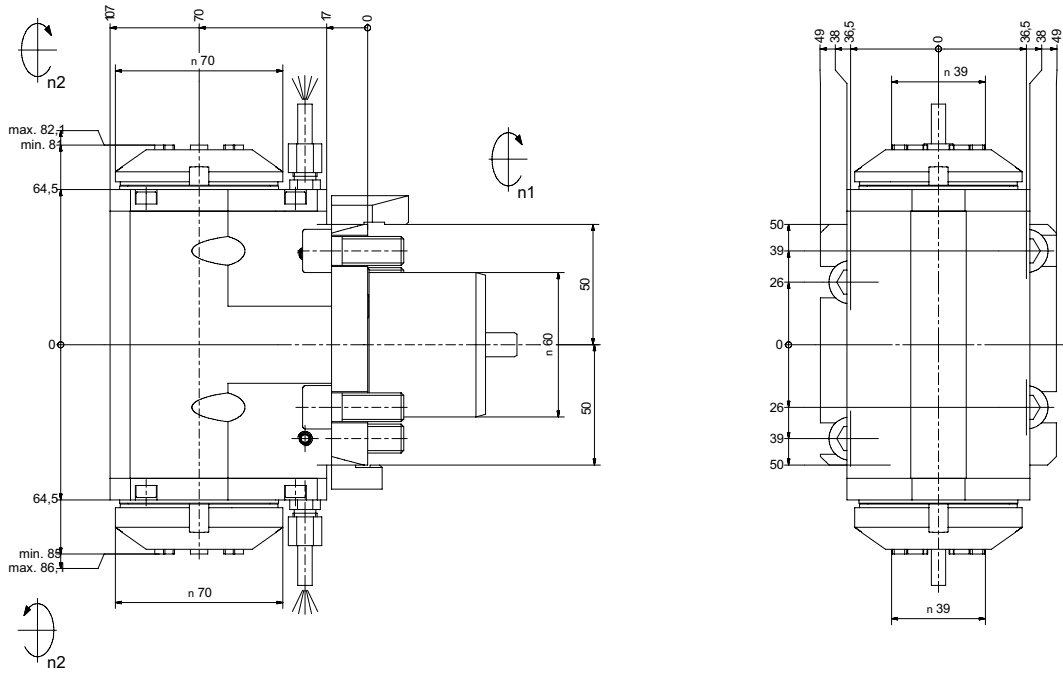


**ITI TOOLING COMPANY**

A Division of **INDEXING TECHNOLOGIES INC.**

37 Orchard Street., Ramsey, NJ. 07446 - Phone (201) 934-6333 - Fax (201) 934-6333 www.indexingtechnologies.com  
 www.ititooling.com

## ITI - Radial (90°) Drilling and Milling Head

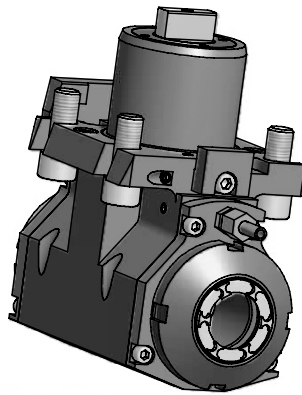


Part No.

# 60.6032DLB2000BMTIM

Subject to technical modifications

Coolant	i	M1	M2	n1	n2	Collet	Clamping Range	Tapping Collet
Ext.	1:1	50 Nm	50 Nm	6000 1/min	6000 1/min	ER32	2.0-20.0	ET 1-32 M5-M12

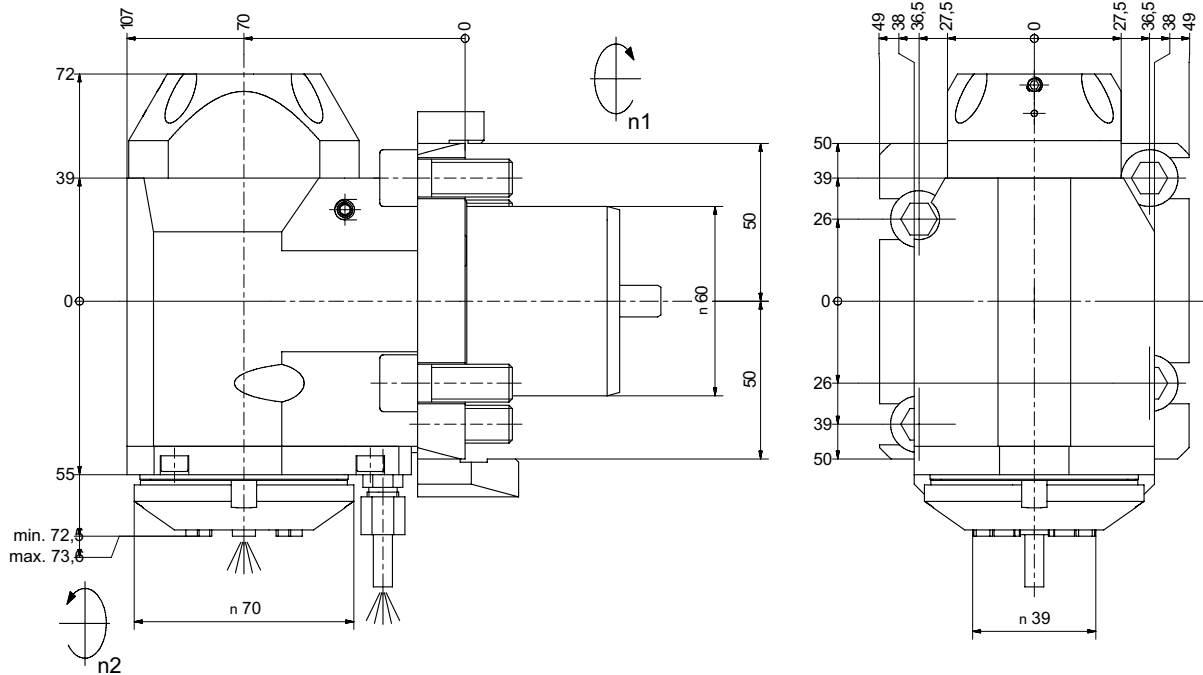


**ITI** TOOLING COMPANY

A Division of **INDEXING** TECHNOLOGIES INC.

37 Orchard Street., Ramsey, NJ. 07446 - Phone (201) 934-6333 - Fax (201) 934-6333 www.indexingtechnologies.com  
www.ititooling.com

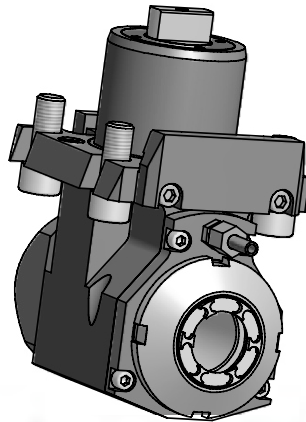
## ITI - Radial (90°) Drilling and Milling Head



**Part No.**  
**# 60.6032LB2000BMTIKIM**

Subject to technical modifications

Coolant	i	M1	M2	n1	n2	Collet	Clamping Range
Int. / Ext.	1:1	50 Nm	50 Nm	6000 1/min	6000 1/min	ER32	2.0-20.0

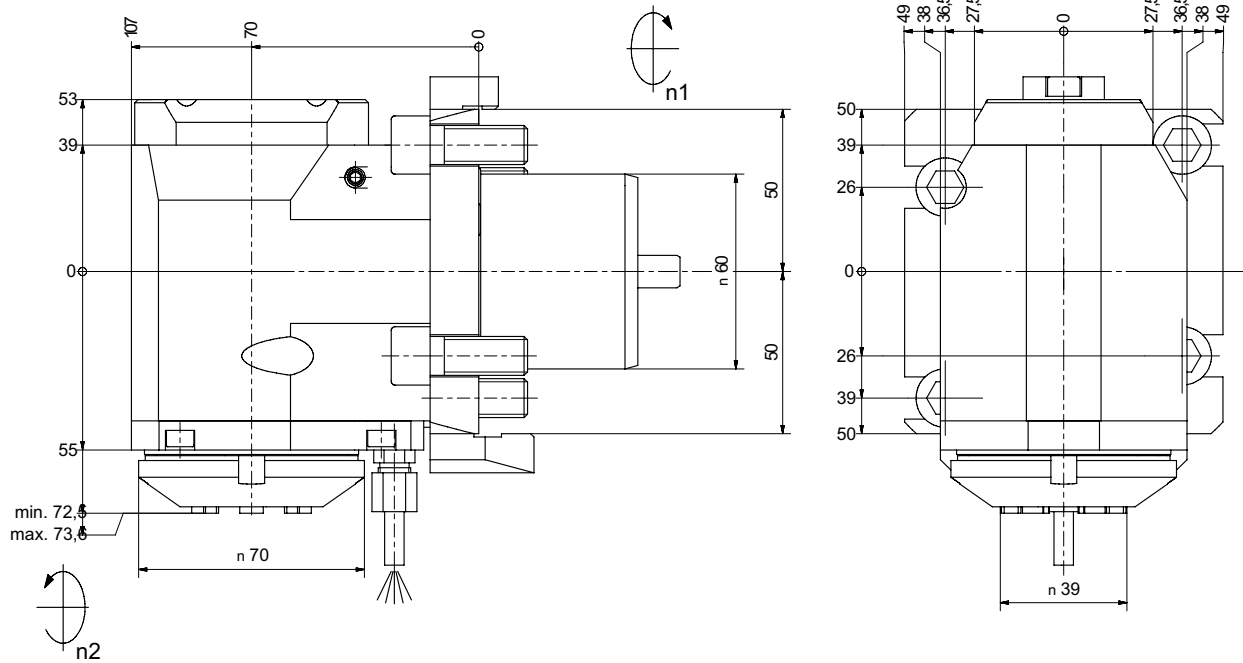


**ITI TOOLING COMPANY**

A Division of **INDEXING TECHNOLOGIES INC.**

37 Orchard Street., Ramsey, NJ. 07446 - Phone (201) 934-6333 - Fax (201) 934-6333 [www.indexingtechnologies.com](http://www.indexingtechnologies.com)  
[www.ititooling.com](http://www.ititooling.com)

## ITI - Radial (90°) Drilling and Milling Head

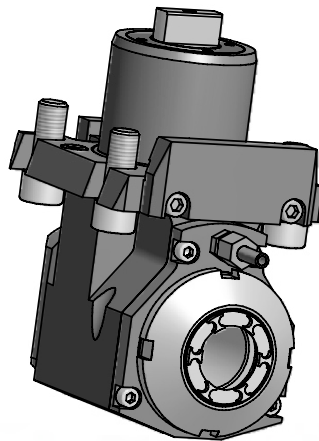


Part No.

# 60.6032LB2000BMTIM

Subject to technical modifications

Coolant	i	M1	M2	n1	n2	Collet	Clamping Range	Tapping Collet
Ext.	1:1	50 Nm	50 Nm	6000 1/min	6000 1/min	ER32	2.0-20.0	ET 1-32 M5-M12

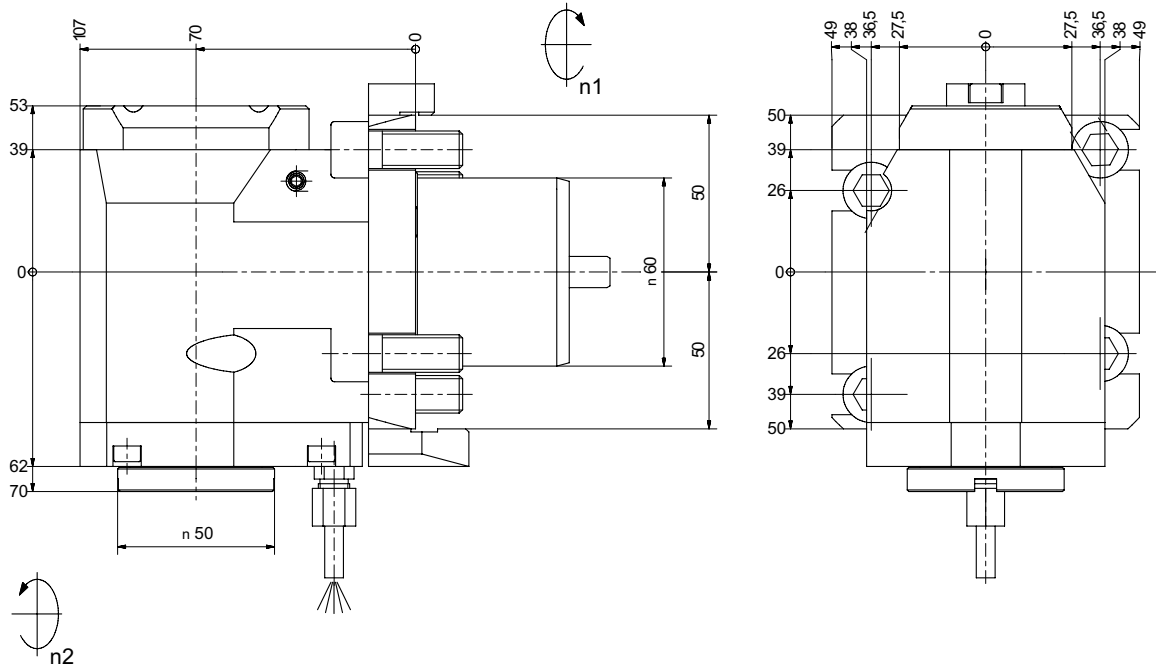


**ITI** TOOLING COMPANY

A Division of **INDEXING** TECHNOLOGIES INC.

37 Orchard Street., Ramsey, NJ. 07446 - Phone (201) 934-6333 - Fax (201) 934-6333 www.indexingtechnologies.com  
www.ititooling.com

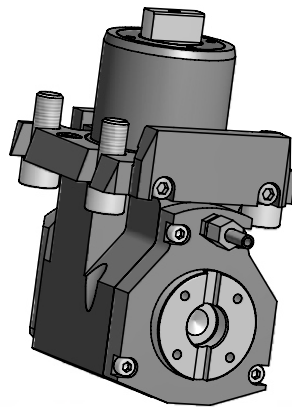
## ITI - Radial (90°) Milling Head



**Part No.**  
**# 62.6000KRLB2000BMT**

**With taper roller bearings**  
 Subject to technical modifications

Coolant	i	M1	M2	n1	n2
Ext.	1:1	50 Nm	50 Nm	6000 1/min	6000 1/min



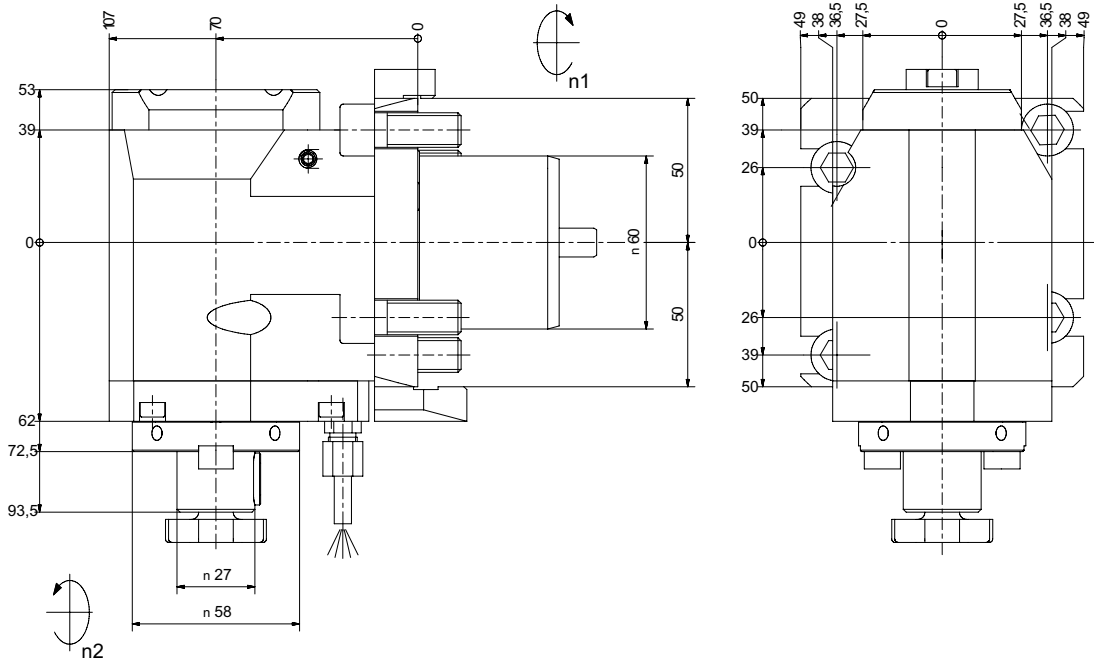
**ITI TOOLING COMPANY**

A Division of **INDEXING TECHNOLOGIES INC.**

37 Orchard Street., Ramsey, NJ. 07446 - Phone (201) 934-6333 - Fax (201) 934-6333 [www.indexingtechnologies.com](http://www.indexingtechnologies.com)  
[www.ititooling.com](http://www.ititooling.com)



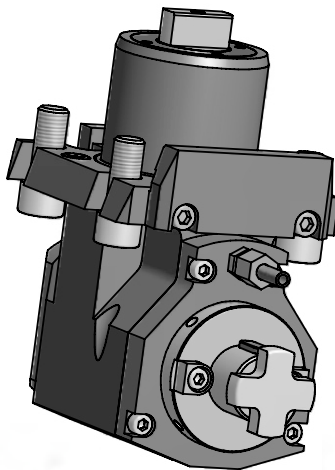
## ITI - Radial (90°) Milling Head



**Part No.**  
**# 62.6027KRLB2000BMT**

**With taper roller bearings**  
 Subject to technical modifications

Coolant	i	M1	M2	n1	n2	Arbor
Ext.	1:1	50 Nm	50 Nm	6000 1/min	6000 1/min	27mm

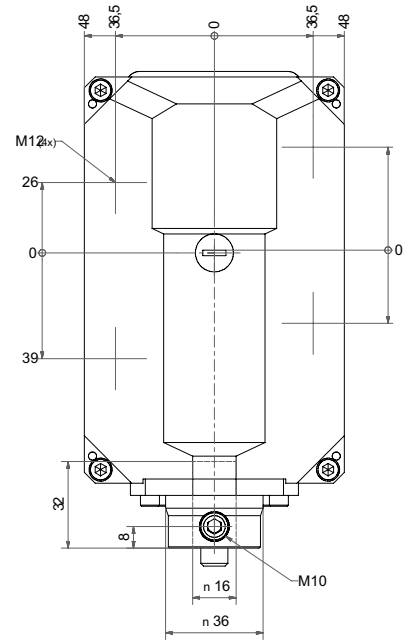
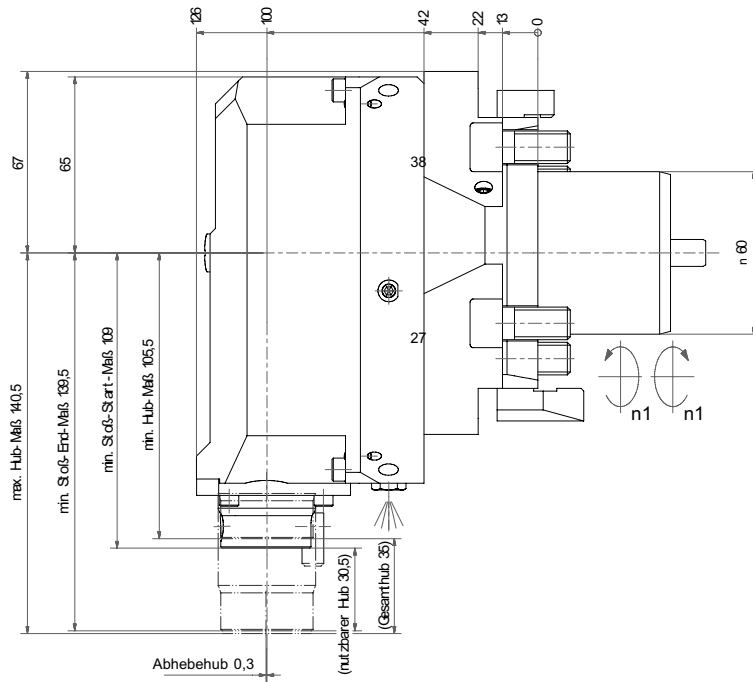


**ITI TOOLING COMPANY**

A Division of **INDEXING TECHNOLOGIES INC.**

37 Orchard Street., Ramsey, NJ. 07446 - Phone (201) 934-6333 - Fax (201) 934-6333 [www.indexingtechnologies.com](http://www.indexingtechnologies.com)  
[www.ititooling.com](http://www.ititooling.com)

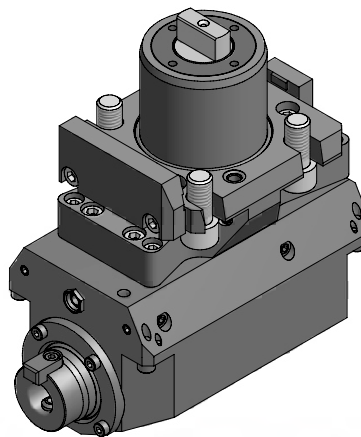
## ITI - Push Type Slotter



**Part No.**  
**# 69.6016WNLB2000BMTX100**

**With taper roller bearings**  
 Subject to technical modifications

Coolant	i	M1	M2	n1	n2	Tooling System	X
Ext.	1:1	20 Nm		1000 1/min		Whistle Notch	X=(100mm)



**ITI TOOLING COMPANY**

A Division of **INDEXING TECHNOLOGIES INC.**

37 Orchard Street., Ramsey, NJ. 07446 - Phone (201) 934-6333 - Fax (201) 934-6333 www.indexingtechnologies.com  
 www.ititooling.com

**ITI QC VARIA®** *Universal Modular Tool Holding System*



## **GIVE US YOUR CNC LATHE AND JUST 7 SECONDS TO PROVE A POINT ...**

Because with just one single-point clamp in the patented ITI QC-Varia tool holding system, all it takes is about 7 seconds to exchange tools on most CNC lathes.

A simple half turn to the left releases used tools, a half turn to the right secures new ones.

And on many lathes, when the tool spindle stops, a spring-loaded detent automatically orients the clamp screw towards the operator. There's no wasted time searching for the clamp and, more importantly, no need to grab sharp or broken tools to rotate the spindle manually.



There's more. Varia's compact design provides a greater working envelope than other modular systems. And with dedication to engineering excellence, you're assured years of trouble-free performance.



**ITI TOOLING COMPANY INC.**

*Your Single Source for High-Quality  
CNC Lathe Tool Holders and Spindle Units*

[www.ititooling.com](http://www.ititooling.com)

