



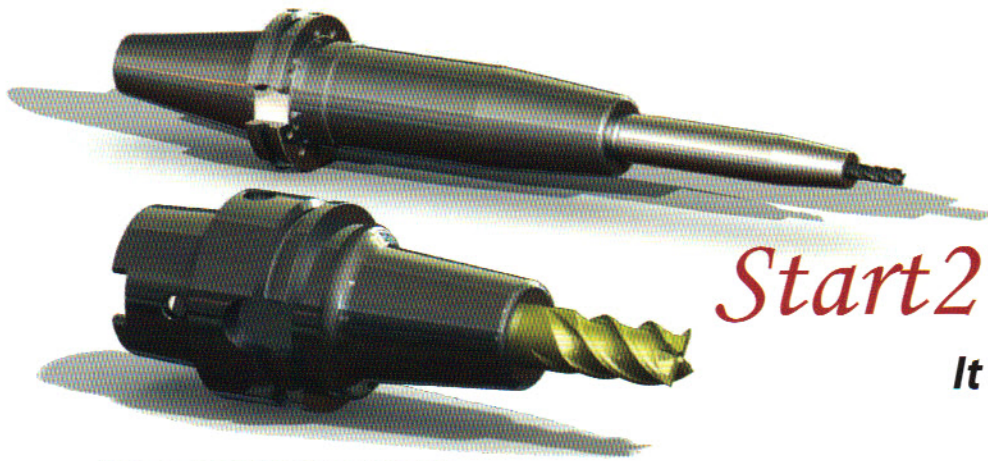
# Shrink Fit

The Industry's Highest  
Quality Shrink Fit Line



Scan this QR code  
to watch the video

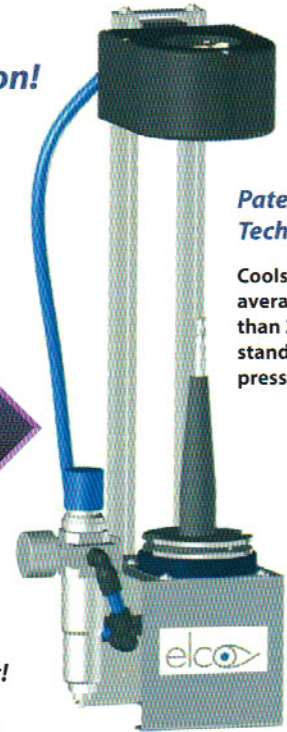
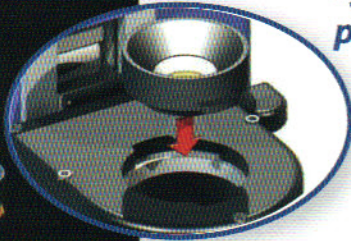




# Start2 Shrink Fit System

*It does so much for so little!*

Lyndex Nikkens Start 2 system provides easy set up and operation!



*Patented Technology!*

Cools tools on average less than 2 min with standard shop air pressure!

Cooler and Shrinker linked and controlled by 1 pendant!

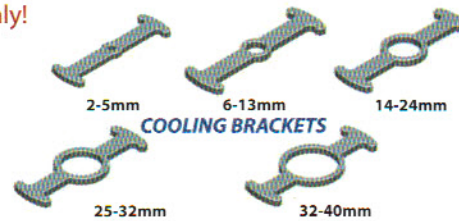
**\$9,950**

For a limited time only!

**SHRINKER UNIT**

**INCLUDING ACCESSORIES!**

\*ACCESSORIES LISTED UNDER "PACKAGE" ON NEXT PAGE



Induction Coil Can be rotated 180 degrees for removal of broken tool shanks or small tools



-Shrink and unshrink any type of tools and cutters (HSS, Carbide, Heavy Metal, Powdered Metal etc.)

-Shrink 2- 40mm (.079-1.575 inch) shank sizes with same unit

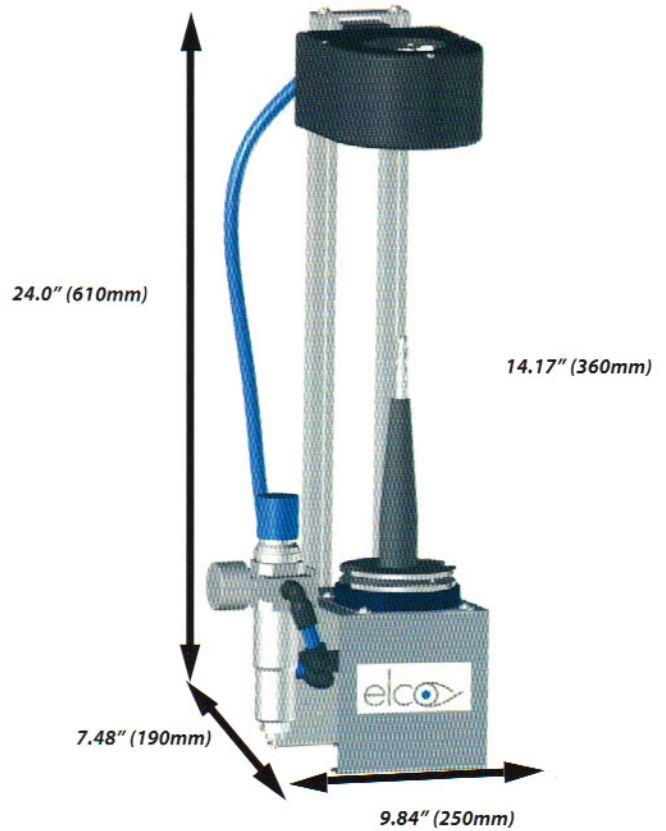
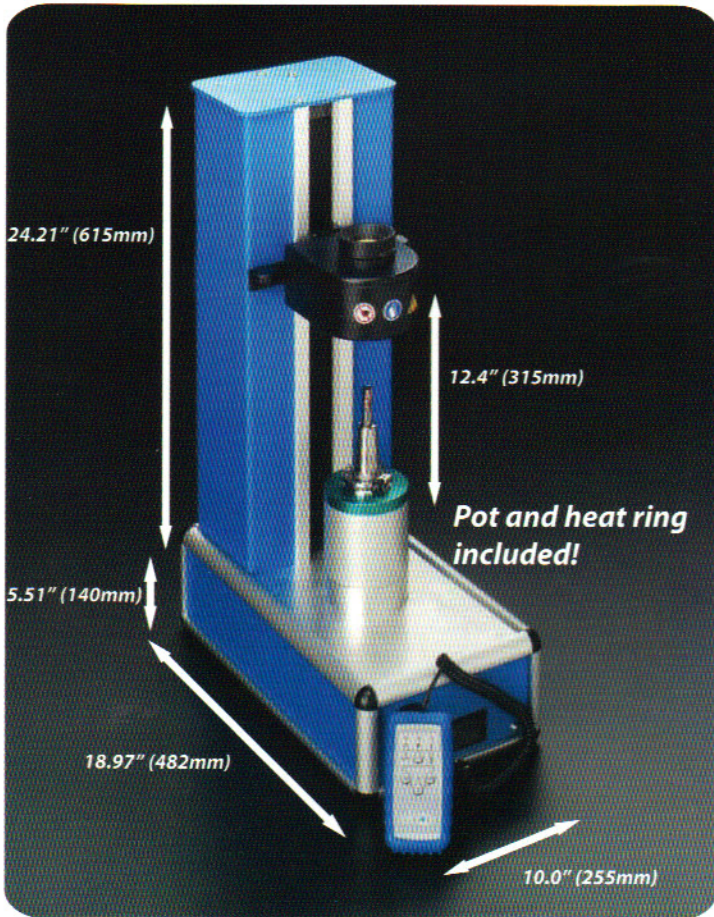
-Inductor coil auto size detection eliminates manual parameter setting

-Easy set up to shrink sizes by quickly changing induction rings

-220V/3 Phase/14 amp power required-no transformer needed

-Unique slide-out Control Module allows One-Day Service

# Start2 Specifications



Power/Amp/Phase	200-240V/14kw/3 Phase
Available Tool Pots	CT/BT 40/50, HSK 63/40
Shrinker Net Weight (lbs)	48.5 lbs
Cooler Net Weight (lbs)	5.5 lbs
Package Net Weight (lbs) <small>Packaging, Shrink Unit, Cooling Unit, Accessories</small>	69 lbs
Air Pressure	70 PSI
Shrinkable Material	HSS/Carbide/Steel
Shrink Time	2-7 sec.

Offer available until supplies last and cannot be combined with other incentives or promotions.

## Package Includes:

- Shrinker Unit
- 1 Tool Pot (CT/BT 40 or 50, HSK63A)
- High Capacity Inductor
- 5 pcs Induction Ring Set
- Flexible Control Pendant
- High Performance Cooler Unit
- Cooler Unit Tool Pot (CT/BT 40 or 50, HSK63A)
- 5 pcs Cooling Bracket Set
- Operation Manual



**Dont hesitate to give us a call!**

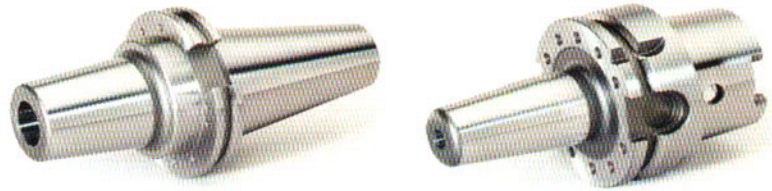
**Questions for the unit or applications?**  
**Let our trained sales engineers help you!**

Contact us!

 (800)-543-6237

 [inquiries@lyndexnikken.com](mailto:inquiries@lyndexnikken.com)



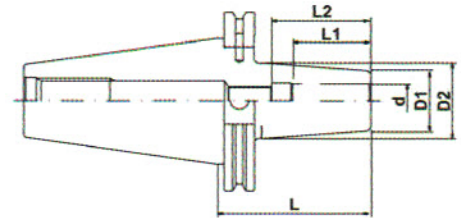


## SHRINK FIT PACKAGE

### Shrink Fit Unit + 10 Shrink Fit Holders

Choose from the tool packages below:

Free upgrade to balanceable toolholders while supplies last!



#### + 10x #40 Taper SF Holders \$ 11,500.00

##### CAT40 - INCH

Part Number	L	d	D1	D2	B/U screw
C40SF-0250-3.15	3.15"	1/4"	0.83"	1.06"	M5
C40SF-0375-3.15	3.15"	3/8"	0.94"	1.26"	M8
C40SF-0500-3.15	3.15"	1/2"	0.94"	1.26"	M10
C40SF-0625-3.15	3.15"	5/8"	1.06"	1.34"	M12
C40SF-0750-3.15	3.15"	3/4"	1.30"	1.65"	M16
C40SF-1000-3.94	3.94"	1"	1.73"	2.05"	M16
C40SF-1250-3.94	3.94"	1.1/4"	1.73"	2.05"	M16

##### CAT40 - METRIC

C40SF-6-80	80mm	6mm	21mm	27mm	M5
C40SF-8-80	80mm	8mm	21mm	27mm	M6
C40SF-10-80	80mm	10mm	24mm	32mm	M8
C40SF-12-80	80mm	12mm	24mm	32mm	M10
C40SF-16-80	80mm	16mm	27mm	34mm	M12
C40SF-20-80	80mm	20mm	33mm	42mm	M16
C40SF-25-100	100mm	25mm	44mm	52mm	M16
C40SF-32-100	100mm	32mm	44mm	52mm	M16

##### BT40 - INCH

B40SF-0250-3.54	3.54"	1/4"	0.83"	1.06"	M5
B40SF-0375-3.54	3.54"	3/8"	0.94"	1.26"	M8
B40SF-0500-3.54	3.54"	1/2"	0.94"	1.26"	M10
B40SF-0625-3.54	3.54"	5/8"	1.06"	1.34"	M12
B40SF-0750-3.54	3.54"	3/4"	1.30"	1.61"	M16
B40SF-1000-3.94	3.94"	1"	1.73"	2.05"	M16
B40SF-1250-3.94	3.94"	1.1/4"	1.73"	2.05"	M16

##### BT40 - METRIC

B40SF-6-90	90mm	6mm	21mm	27mm	M5
B40SF-8-90	90mm	8mm	21mm	27mm	M6
B40SF-10-90	90mm	10mm	24mm	32mm	M8
B40SF-12-90	90mm	12mm	24mm	32mm	M10
B40SF-16-90	90mm	16mm	27mm	34mm	M12
B40SF-20-90	90mm	20mm	33mm	41mm	M16
B40SF-25-100	100mm	25mm	44mm	52mm	M16
B40SF-32-100	100mm	32mm	44mm	52mm	M16

#### + 10x HSK63A SF Holders \$ 11,750.00

##### HSK63A - INCH

Part Number	L	d	D1	D2	B/U screw
HSK63A-SF0250-3.15	3.15"	1/4"	0.83"	1.06"	M5
HSK63A-SF0375-3.35	3.35"	3/8"	0.94"	1.26"	M8
HSK63A-SF0500-3.54	3.54"	1/2"	0.94"	1.26"	M10
HSK63A-SF0625-3.74	3.74"	5/8"	1.06"	1.34"	M12
HSK63A-SF0750-3.94	3.94"	3/4"	1.30"	1.65"	M16
HSK63A-SF1000-4.53	4.53"	1"	1.73"	2.09"	M16

##### HSK63A - METRIC

HSK63A-SF6-80	80mm	6mm	21mm	27mm	M5
HSK63A-SF8-80	80mm	8mm	21mm	27mm	M6
HSK63A-SF10-85	85mm	10mm	24mm	32mm	M8
HSK63A-SF12-90	90mm	12mm	24mm	32mm	M10
HSK63A-SF16-95	95mm	16mm	27mm	34mm	M12
HSK63A-SF20-100	100mm	20mm	33mm	42mm	M16
HSK63A-SF25-115	115mm	25mm	44mm	53mm	M16

Offer available until supplies last and cannot be combined with other promotion or incentive. Freight not included.

#### + 10x #50 Taper SF Holders \$ 12,000.00

##### CAT50 - INCH

Part Number	L	d	D1	D2	B/U screw
C50SF-0250-3.15	3.15"	1/4"	0.83"	1.06"	M5
C50SF-0375-3.15	3.15"	3/8"	0.94"	1.26"	M8
C50SF-0500-3.15	3.15"	1/2"	0.94"	1.26"	M10
C50SF-0625-3.15	3.15"	5/8"	1.06"	1.34"	M12
C50SF-0750-3.15	3.15"	3/4"	1.30"	1.65"	M16
C50SF-1000-3.94	3.94"	1"	1.73"	2.09"	M16
C50SF-1250-3.94	3.94"	1.1/4"	1.73"	2.09"	M16

##### CAT50 - METRIC

C50SF-6-80	80mm	6mm	21mm	27mm	M5
C50SF-8-80	80mm	8mm	21mm	27mm	M6
C50SF-10-80	80mm	10mm	24mm	32mm	M8
C50SF-12-80	80mm	12mm	24mm	32mm	M10
C50SF-16-80	80mm	16mm	27mm	34mm	M12
C50SF-20-80	80mm	20mm	33mm	42mm	M16
C50SF-25-100	100mm	25mm	44mm	53mm	M16
C50SF-32-100	100mm	32mm	44mm	53mm	M16

##### BT50 - INCH

B50SF-0250-3.94	3.94"	1/4"	0.83"	1.06"	M5
B50SF-0375-3.94	3.94"	3/8"	0.94"	1.26"	M8
B50SF-0500-3.94	3.94"	1/2"	0.94"	1.26"	M10
B50SF-0625-3.94	3.94"	5/8"	1.06"	1.34"	M12
B50SF-0750-3.94	3.94"	3/4"	1.30"	1.61"	M16
B50SF-1000-3.94	3.94"	1"	1.73"	2.05"	M16
B50SF-1250-3.94	3.94"	1.1/4"	1.73"	2.05"	M16

##### BT50 - METRIC

B50SF-6-100	100mm	6mm	21mm	27mm	M5
B50SF-8-100	100mm	8mm	21mm	27mm	M6
B50SF-10-100	100mm	10mm	24mm	32mm	M8
B50SF-12-100	100mm	12mm	24mm	32mm	M10
B50SF-16-100	100mm	16mm	27mm	34mm	M12
B50SF-20-100	100mm	20mm	33mm	41mm	M16
B50SF-25-100	100mm	25mm	44mm	52mm	M16
B50SF-32-100	100mm	32mm	44mm	52mm	M16

#### + 10x HSK100A SF Holders \$ 12,750.00

##### HSK100A - INCH

Part Number	L	d	D1	D2	B/U screw
HSK100A-SF0375-3.54	3.54"	3/8"	0.94"	1.26"	M8
HSK100A-SF0500-3.74	3.74"	1/2"	0.94"	1.26"	M10
HSK100A-SF0625-3.94	3.94"	5/8"	1.06"	1.34"	M12
HSK100A-SF0750-4.13	4.13"	3/4"	1.30"	1.65"	M16
HSK100A-SF1000-4.53	4.53"	1"	1.73"	2.09"	M16
HSK100A-SF1250-4.72	4.72"	1.1/4"	1.73"	2.09"	M16

##### HSK100A - METRIC

HSK100A-SF6-85	85mm	6mm	21mm	27mm	M5
HSK100A-SF8-85	85mm	8mm	21mm	27mm	M6
HSK100A-SF10-90	90mm	10mm	24mm	32mm	M8
HSK100A-SF12-95	95mm	12mm	24mm	32mm	M10
HSK100A-SF16-100	100mm	16mm	27mm	34mm	M12
HSK100A-SF20-105	105mm	20mm	33mm	42mm	M16
HSK100A-SF25-115	115mm	25mm	44mm	53mm	M16